

AUTUMN 2022

# playbook

Autumn registration  
begins Saturday,  
August 27 *at* 9 am

## IN THIS ISSUE:

Lake Ellyn  
1-Mile Classic *p12*

Platform Tennis *p78*

Capital Projects  
Update *p04*

And much more!



**GLEN ELLYN**  
PARK DISTRICT

   [gepark.org](https://www.gepark.org)

# we're here to help!

Staff initials follow the program description for which they are responsible.

BT	Brad Thomas	<a href="mailto:bthomas@gepark.org">bthomas@gepark.org</a>
CG	Chris Gutmann	<a href="mailto:cgutmann@gepark.org">cgutmann@gepark.org</a>
CB	Clint Babicz	<a href="mailto:cbabicz@gepark.org">cbabicz@gepark.org</a>
DM	David MacDonald	<a href="mailto:dmacdonald@gepark.org">dmacdonald@gepark.org</a>
GM	Graham McQueen	<a href="mailto:gmcqueen@gepark.org">gmcqueen@gepark.org</a>
JR	Jeannie Robinson	<a href="mailto:jrobinson@gepark.org">jrobinson@gepark.org</a>
KS	Katy Speck	<a href="mailto:kspeck@gepark.org">kspeck@gepark.org</a>
LB	Laurie Bellmar	<a href="mailto:lbellmar@gepark.org">lbellmar@gepark.org</a>
MN	Mike Nishimura	<a href="mailto:mnishimura@gepark.org">mnishimura@gepark.org</a>
SL	Stacey Lim	<a href="mailto:slim@gepark.org">slim@gepark.org</a>

Website .....	<a href="http://gepark.org">gepark.org</a>
Registration/General Questions .....	(630) 858-2462
Refund Requests .....	<a href="http://gepark.org/refund">gepark.org/refund</a>
Ackerman SFC Questions .....	(630) 317-0130
Closure/Cancellation Hotline .....	<a href="http://gepark.org/hotline">gepark.org/hotline</a>

# our mission

To foster diverse, community-based leisure opportunities, through a harmonious blend of quality recreation programs, facilities, and open space which will enhance the quality of life into the future.



# how to register

## Autumn Registration Start Dates

**Residents:** 9am Saturday, August 27

**Nonresidents:** 9am Saturday, September 3

### Online

Click the code number in the digital guide or visit [gepark.org/register](http://gepark.org/register). New users must create an account prior to registering online by clicking "Create an Account."

### Drop Off Form or Register in Person

Spring Avenue Recreation Center • 185 Spring Avenue  
Main Street Recreation Center • 501 Hill Avenue

**Monday-Thursday:** 8:30am-8pm

**Friday:** 8:30am-5pm

**Saturday:** 9am-12pm

**Sunday:** Closed

*Closed Sept. 5 and Nov. 24-25. Check our website for irregular hours and closures from Dec. 19-Jan. 2.*

### Mail/Fax

**Mail:** Glen Ellyn Park District, Registration, 185 Spring Avenue, Glen Ellyn, 60137

**Fax:** (630) 389-8527

## Upcoming Playbook Release Dates

**WINTER 2023:** Nov. 23, 2022

**SPRING 2023 & CAMP GUIDE:** Jan. 25, 2023

*The District reserves the right to change the release dates above.*

# BOARD of COMMISSIONERS

For the Board meeting schedule, visit: [gepark.org/board-meetings](http://gepark.org/board-meetings)



Alex Durham  
President



Julia Nephew  
Vice President



Kathy Cornell  
Treasurer



Ben Stortz



Michael Ward



Rob Weber



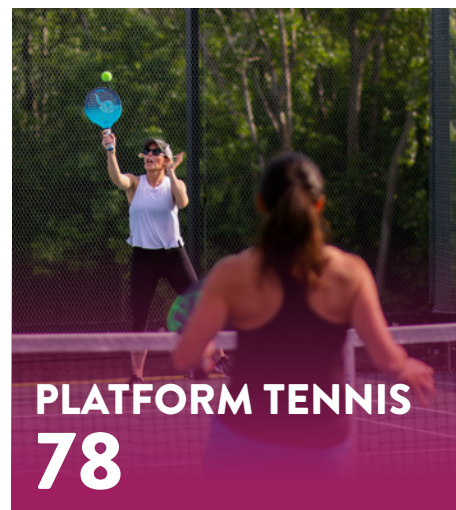
# what's inside



**EVENTS**  
**07**



**WINTER YOUTH BASKETBALL**  
**57**



**PLATFORM TENNIS**  
**78**

**Adult Interest .....36**

Self defense, dance, tai chi, meditation, dog training, and more

**Active Older Adults & Seniors ...40**

Luncheons, bingo, clubs, and more

**Adventure Time .....21**

**Capital Projects Update .....04**

**Dance .....67**

**Day Trips .....42**

**Directory .....02**

**Early Childhood Interest.....22**

**Events .....07**

Community events, registered events, blood and food drives

**Fitness .....73**

Ackerman SFC, Spring Avenue Fitness Center, personal training, sports training

**Gymnastics .....70**

**Holes & Knolls Mini Golf.....17**

**Maryknoll Splash Park .....17**

**Nature .....44**

Native Tree & Shrub Sale, Ghost Hunt, birding, and more

**Park Information ..... 84**

**Platform Tennis..... 78**

**Policies..... 87**

**Preschool..... 18**

**Referendum Update..... 06**

**Registration..... 02**

**Rentals..... 81**

**Scholarship Program ..... 83**

**Sports ..... 50**

Early childhood, youth/teen, and adult classes and leagues

**Spring Avenue Dog Park..... 49**

**Youth & Teen Interest ..... 26**

**WDSRA..... 86**

## new for autumn

- Oaktoberfest
- Lake Ellyn 1-Mile Classic
- Autumn Gone Fishin' Derby
- Grandparents and Me Day
- Flashlight Candy Cane Hunt
- Little Medical School classes
- Women's Self Defense
- Double the Fun Drawing
- Superhero Training
- And so much more!

### MINIMUMS & MAXIMUMS

Each program and program session has a set minimum and maximum number of participants based on providing quality instruction, space availability, supplies, number of instructors, and other factors. For some programs, we may be able to accommodate the wait list or add an extra session, while we may not be able to do so for others. Programs not meeting the minimum registration may be canceled, and patrons will be notified.

# Capital 2022 Projects



## Shoreline Improvements at Lake Ellyn Park

### IN PROGRESS

The Glen Ellyn Park District has embarked on the next phase of Lake Ellyn Park improvements. A new shoreline path extending from the Lake Ellyn Boathouse to the fishing pier is under construction thanks to an anonymous donation. The 12-foot-wide path will feature permeable pavers as well as sections of masonry seat wall. Also included within the project scope is the addition of a concrete ramp to the existing boat ramp north of the Boathouse, bioswale buffer planting, and path lighting. The project is expected to be completed in September 2022, weather permitting.



## Newton Park Improvements

### IN PROGRESS

This 25-acre park is being renovated with both passive and active recreation opportunities, funded in part by a \$400,000 matching State of Illinois OSLAD grant. Enhancements including a new playground with an ADA-inclusive focus, sensory garden, shade-covered tables, bike rack, and new surfacing were completed in May. In August, the fencing surrounding the skate park was removed. A professional skateboard design consultant has been engaged for the skate park redesign, which will begin in fall.





## Ackerman Sports & Fitness Center Upgrades

### IN PROGRESS

Multiple renovations took place in the former Hard Gainers Athletics space at Ackerman SFC. A batting cage system that can be configured in a multitude of ways was installed in January. Utilizing a grant through ComEd, new LED lights were installed which have the benefit of being significantly brighter while also reducing energy costs. The incentives for this project saved almost \$3,000. New flooring was installed in July. This includes a large rubber flooring area for group exercise and new heavy-duty turf that will accommodate various training activities. Final painting and signage are the last detail items to finish this renovation.

## Sunset Pool Deck & Shade Canopy

### COMPLETE

A shade canopy was installed adjacent to the concession building for the 2022 season. Underneath, an area previously turf grass was converted to a hardscape plaza with tables. New tables were installed in early August.

## Sunset Pool Heater Replacement

### COMPLETE

The pool heaters at Sunset Pool have been kept running as long as possible but have exceeded their useful life. Over the winter, staff used an aquatic engineer to specify new heaters and bid the project. This project was completed prior to the opening of the pool for the 2022 season.

## Sunset Park Playground Replacement

### UPCOMING

Exciting updates are coming to Sunset Park, including replacement of the 29-year-old playground. Construction is anticipated to begin in late October and finish in spring 2023. This equipment, constructed from 50-100% ocean waste, will be an environmentally friendly play space where kids can play for decades to come. In addition to the playground replacement, a 20ft-by-20ft shelter will be installed to provide shade.

## George Ball Tennis Court Resurfacing

### UPCOMING

Improvements to the George Ball Park tennis courts include asphalt court renovation, fencing, color coating, and new nets. The eastern three courts will be lined for tennis and pickleball. Upgraded LED lights with minimal overspill will also be installed. A ComEd grant will cover \$24,000 of the light costs.

## Ackerman Park Fields 5 & 6

### UPCOMING

Field improvements are coming late this fall to Ackerman Park fields 5 and 6. Through Illinois Department of Commerce and Economic Opportunity grant funds, these fields will be improved to the same level as the softball hub fields 1-4. This includes domed backstops, dugouts, and a premium infield mix.

## COMMUNITY PASSES

# Glen Ellyn Park District Referendum



The Glen Ellyn Park District referendum request for \$15.9 million to repair, improve and expand facilities, upgrade four park properties throughout the district, and purchase additional land for parks has been approved, according to preliminary results as reported by DuPage County Clerk – Election Division.

We are so grateful, and would like to thank every member of the Glen Ellyn Park District community for your continued support. From the survey responses to the ballots cast in yesterday's vote, your voices have been heard and we are honored to deliver what matters most to you here in our community.

We look forward to the completion of these projects so that Sunset Pool will continue to serve generations of families; Ackerman Sports & Fitness Center will welcome more gymnasts and provide enhanced fitness programs; and individuals and families will have new places to fish, learn about our environment, have picnics, and play.

As responsible stewards of your tax dollars, we will begin the designing, permitting and bidding process in July, and improvements on the Village Green ballfields will start in January 2023. Improvements throughout the parks are expected to start in April 2023 with construction on Sunset Pool and Ackerman Sports & Fitness Center following in September 2023 and January 2024, respectively.

All construction is expected to be completed within the next 3.5 years. We will attempt to keep disruptions to a minimum, however there may be times your favorite class or activity may be temporarily moved to an alternate location. We appreciate your patience, and we urge all residents to [visit our website](#) and regularly follow us on social media ([Facebook](#), [Twitter](#), and [Instagram](#)) to stay up to date on our progress. Again, we are grateful for your continued support.





# community events

## Free Week at Ackerman SFC

**September 11-September 17**

We're waiving the drop-in fee for the fitness center and group fitness classes at Ackerman SFC during our "Free Week," which runs September 11-September 17. This is your chance to experience the many benefits of a great workout at Ackerman and achieve your fitness goals. To take advantage of this special opportunity, just register at the Ackerman SFC front desk during Free Week. Please note, use of the fitness center located in the Spring Avenue Recreation Center is not included as part of Free Week. (bt)

## Glow in the Park Lantern Walk

All ages

Get ready to light up the night at Glow in the Park! The Glen Ellyn Park District and Charlie's Corner Foundation are partnering to offer this exciting evening of family activities benefiting Lurie Children's. Start the evening enjoying face painting, a balloon artist, live music, and more. Food will also be available for purchase. At 7:15pm, watch or march in the illuminated paper lantern walk around the lake.

Decorate a lantern for the walk on site, or bring your own ready to go. Prizes will be awarded to the most creative lanterns. Lantern kits can be purchased at Spring Avenue Recreation Center through September 9 during registration office hours. There is a \$10 fee to decorate a lantern on-site (while supplies last; cash only). Glow in the Park is free to attend, but cash donations to Lurie Children's are encouraged. Location: Lake Ellyn Park. (dm)

**Date:** Sunday, September 11

**Time:** 5pm-8pm

**Location:** Lake Ellyn Park

AUTUMN 2022 • 7

● Registration open now ● Registration opens at 9am August 27





## Oaktoberfest

All ages

Celebrate Illinois oaks! Learn about these stately trees while enjoying family-friendly activities such as writing a love letter to a tree, taking a guided nature walk, attempting an acorn obstacle course, playing leaf bingo, and working on a tree art project. Two Hound Red will have an “Oaktoberfest” beer available for purchase. Attendees will also be able to try out platform tennis (first come, first serve; equipment and brief instruction included). Children must be accompanied by an adult. Co-hosted by Go Green Glen Ellyn. (lb)

**Date:** Saturday, October 8

**Time:** 1-4pm

**Location:** Maryknoll Park

**R/NR:** Free



## Family Bingo Night

All ages

Spend an evening at Ackerman SFC packed with bingo, pizza, and prizes. We'll play several rounds starting at 5:30pm. Prizes, like gift cards and candy, will be awarded at the end of each round. Pre-registration is not required. Kids ages 15 and under must be accompanied by an adult. Drop in any time with the whole family and have some fun. (bt)

**Date:** Friday, October 14

**Time:** 5-7pm

**Location:** Ackerman SFC

**R/NR:** \$1 per card



## Kiwanis Fish Release

All ages

Help release fish into Lake Foxcroft or Lake Ellyn. Participants are given a bucket of fish which they carry to the water's edge and release. This continues until all fish reach their new water home. Bring a canned good item to donate to the Glen Ellyn Food Pantry and be sure to dress appropriately. No registration required. Sponsored by Kiwanis Club of Central DuPage, Glen Ellyn Kiwanis Club, and Glen Ellyn Park District.

**Date:** Saturday, October 15

**Location:** Lake Ellyn Park

**Time:** ~12:15pm

**R/NR:** Free

**Date:** Saturday, October 15

**Location:** Lake Foxcroft Park

**Time:** ~12:45pm

**R/NR:** Free





## Pumpkins on Main

All ages

Call for jack-o-lanterns! Submit a pumpkin to be part of our community jack-o-lantern display over Halloween weekend...and for a chance to win prizes. Carve a pumpkin at home and drop it off at Main Street Recreation Center between 10am-3pm Friday, October 28, or join us for our Pumpkin Carving Night on October 27.

Pumpkins will be exhibited as part of our spooktacular display for everyone to enjoy outside Main Street Recreation Center from October 28-31.

If you would like to take your pumpkin home after Halloween, pumpkins can be picked up beginning at 10am Tuesday, November 1. (jr)

### SUBMIT A PUMPKIN:

Carving pumpkins at home to submit for the display? Each family member submitting a pumpkin must register by October 26.

**R/NR:** Free

**#/Link:** [127036](#)

### PUMPKIN CARVING NIGHT:

Come carve a pumpkin! We will supply the pumpkins and necessary tools. All pumpkins will be included as part of our Pumpkins on Main display.

**Date:** Thursday, October 27

**Location:** Main Street Rec. Center

**Time:** 6-8pm

**R/NR:** Free

**#/Link:** [127037](#)

## Pumpkin Smash

All ages

Do not trash your pumpkins, smash them! Bring your jack-o-lanterns for composting at Village Green Park. Drop and go or take the opportunity to smash and chop your pumpkin. It will add nutrients to our community garden soil while keeping pumpkins out of the landfill. Please no painted pumpkins. All decorations and candles must be removed. If you stay to smash and wish to use tools, please bring a baseball bat or shovel. No registration required. (lb)

**Date:** Saturday, November 5

**Time:** 9-11am

**Location:** Village Green Park

**R/NR:** Free





## Turkey Burn

Ages 14 and up

Earn that extra helping of mashed potatoes and help feed the less fortunate. Join us for a morning of calorie-burning fun featuring a selection of some of your favorite group fitness classes. The “fee” to participate is a non-perishable food item (or toiletry) donation. Donations will benefit the Glen Ellyn Food Pantry. No registration required. (sl)

**Date:** Thursday, November 24

**Time:** 7-10am

**Location:** Ackerman SFC



## Turkey Trot 5-Mile Run

All ages

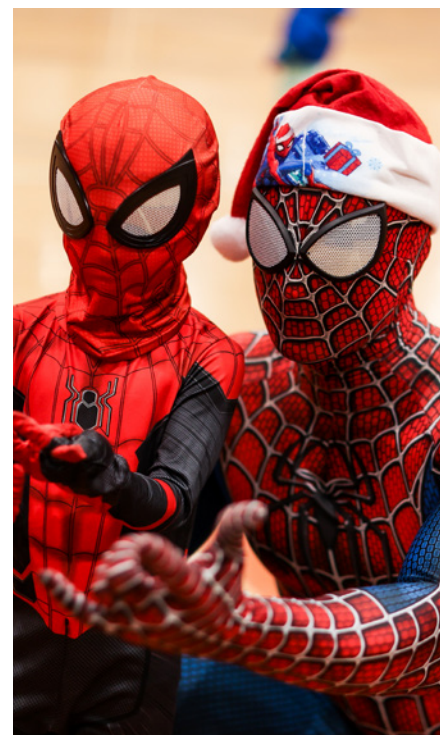
Start your Thanksgiving at the Turkey Trot Predicto Race. You don't have to cross the finish line first to win. The top two runners who most accurately predict their finish time will win a Thanksgiving treat. Prizes will also be awarded for Best Costume. Registration is not required, but a waiver must be signed prior to the event to qualify. No timing devices allowed on the course. For all ages. Help support the Glen Ellyn Food Pantry by bringing non-perishable food items to the race. The Park District will collect donations and deliver them to the food pantry. (gm)

**Date:** Thursday, November 24

**Time:** 8am start

**Location:** Lake Ellyn Park

**R/NR:** Free



## Toys for Tots Toy Drive with Characters

All ages

Your favorite characters will be collecting new, unwrapped toys for children in need at Ackerman SFC. Bring a toy to donate for a change to meet, interact, and take photos with superheroes, princesses, and more. Offered in partnership with League of Enchantment. (bt)

**Date:** Sunday, December 4

**Time:** 1-3pm

**Location:** Ackerman SFC



# GLEN ELLYN Gives



## Blood Drives & Food Drives

We're hosting blood drives and drive-thru drop-off food drives at Ackerman SFC! Appointments are recommended for the blood drives but walkups are welcome. To donate nonperishable food items and toiletries to Glen Ellyn Food Pantry, just pull up to the main entrance and we'll do the rest.

Type	Date	Donation Window	Blood Donation Appointment Link
Blood & Food Drive	Tuesday, September 20	9am to 3pm	<a href="#">Schedule »</a>
Blood & Food Drive	Thursday, October 20	9am to 3pm	<a href="#">Schedule »</a>
Blood & Food Drive	Tuesday, November 22	9am to 3pm	<a href="#">Schedule »</a>
Blood Drive	Wednesday, December 21	9am to 3pm	<a href="#">Schedule »</a>

*The blood drives are offered in partnership with State Representative Terra Costa Howard and Kiwanis Club of Glen Ellyn.*

# Glen Ellyn Native Tree & Shrub Sale

Preorder now through 12pm September 16.

[TheConservationFoundation.org](https://TheConservationFoundation.org)



# registered events

Most events have a set minimum and maximum number of participants based on providing a quality experience, space availability, number of instructors/staff/volunteers, supplies, and other factors. Events may reach the maximum prior to the registration deadline, if indicated. For some programs, the District may be able to accommodate the wait list or add an extra session, while we may not be able to do so for others.

## Disc Golf Ace Race

All ages

Each participant will play two rounds of disc golf on our 9-hole course, but instead of keeping score the only object is to throw aces (also known as a hole-in-one). Holes are shortened to have both adult and youth tees. Participants will play in the group with which they come; single players will be grouped with other single players. Players that score an ace will receive a \$25 Dick's Sporting Goods gift card which will be mailed to their home and will be entered to win the \$100 Visa gift card grand prize. The more aces you score, the more chances you have of winning. There will be one winner selected for the grand prize.

If you are new to disc golf or it has been a while since you last played, there will be a basket set up so you can practice throwing prior to the race. Bring your own disc to throw, or spares will be available to use. Each participant will receive a swag bag of disc golf items. Location: Maryknoll Park. Min/Max: 5/50. (sl)

#/Link	Day	Date	Time	R/NR
<a href="#">126502</a>	Sa	9/10	9-11am	\$15/\$25 ●

## Lake Ellyn 1-Mile Classic and Kids Dash

Ages 3 and up

The mile is making its comeback and we want you to be a part of it. With 5,280 feet of perfect running surface, the inaugural Lake Ellyn 1-Mile Classic is a must for your fall calendar. Run or walk a one-mile loop around Lake Ellyn Park taking in the majestic views of Lake Ellyn and the quintessential community of Glen Ellyn during this beautiful time of year.

Online registration will be available until September 17; in-person registration will be available on September 18 at Lake Ellyn Park beginning at 7:30am. Packet pick up will take place from 8am to 5pm Saturday, September 17 at Ackerman SFC and at Lake Ellyn Park on race morning.

Early bird registrants are guaranteed a race shirt. Awards will be presented for each age group/category. Grownups may accompany children for the Kids Dash but do not need to register. (bt)

**Early Bird Fee (ends 9/9): \$20**

**Regular Fee (9/10-9/18): \$25**

#/Link	Ages	Day	Date	Time	
<a href="#">126632</a>	6-13	Su	9/18	8am	●
<a href="#">127159</a>	14-19	Su	9/18	8:30am	●
<a href="#">127160</a>	20-29	Su	9/18	8:45am	●
<a href="#">127161</a>	30-39	Su	9/18	9am	●
<a href="#">127162</a>	40-49	Su	9/18	9:15am	●
<a href="#">127163</a>	50-59	Su	9/18	9:30am	●
<a href="#">127164</a>	60 and up	Su	9/18	9:45am	●
<a href="#">127165</a>	Kids Dash (3-6)	Su	9/18	10am	●

AUTUMN 2022 • 12

● Registration open now ● Registration opens at 9am August 27





## Autumn Gone Fishin' Derby

Ages 3-12 with adult

Come down to the watering hole and bring your favorite poles and pals for our autumn edition of a catch-and-release fishing derby at Lake Ellyn Park. You'll have an hour to catch as many fish as you can, but don't forget to try and get the big one. Prizes will be awarded for largest, smallest, and most fish caught in two age groups, 3-6 years and 7-12 years, as well as overall "Best Dressed Fisherman." All children must be registered and accompanied by an adult. Fee is per child and includes bait, snacks, and activity. Participants must supply their own fishing poles. Location: Lake Ellyn Boathouse. Min/Max: 25/80. (dm)

#/Link	Day	Date	Time	R/NR
<a href="#">126744</a>	Sa	10/1	9:30-11am	\$10/\$15 •

## WERQ-A-Thon: UNITING AGAINST BREAST CANCER

All ages

WERQ for a good cause! Join Ackerman SFC's WERQ instructors for two hours of cardio dance fun in support of The Breast Cancer Research Foundation. There will be snacks, water, and giveaways at the event. Registered participants will receive a WERQ-A-Thon t-shirt. Additional donations will be accepted at the event. (sl)

**Date:** Sunday, October 9

**Time:** 11am-1pm

**Location:** Ackerman SFC

**R/NR:** \$20

**#/Link:** [126631](#) •



## Grandparents and Me Day at the Lake

Ages 4 and up with grandparent(s)

Grandparents and their grandkids will explore Lake Ellyn Park in this intergenerational outdoor experience. Meet at Lake Ellyn Boathouse to participate in art and craft activities, explore the outdoors with a hike or nature scavenger hunt, as well as the opportunity to boat or fish at Lake Ellyn. If you plan to fish, please provide your own fishing pole. Bait will be provided. This will be a memory your grandchildren will cherish forever. Snacks and refreshments included. Grandparent and grandchild must both register. Location: Lake Ellyn Boathouse. Min/Max: 25/100. (dm)

#/Link	Day	Date	Time	R/NR
<a href="#">126745</a>	M	10/10	9am-12pm	\$20/\$30 •
<a href="#">126746</a>	Tu	10/11	9am-12pm	\$20/\$30 •



## Boo Bash

Ages 2-10 with adult

Dress in your favorite costume and join us for a spooky good time. Enjoy the trick-or-treat trail along with your favorite characters, listen to stories read by the Glen Ellyn Public Library, and enjoy Halloween snacks and refreshments. Don't forget to stop by the pumpkin patch to take a pumpkin home. Adults must accompany children; only children need to be registered. Location: Maryknoll Park. Min/Max: 50/250. (dm)

#/Link	Day	Date	Time	R/NR
<a href="#">126743</a>	Sa	10/22	10-11:30am	\$15/\$25 •

## Ackerman Haunted Trail

Best for ages 5 and up (caregiver discretion)

Take a walk along a haunted trail full of creepy creatures, scary sounds, and bone-chilling scenes. Come any time between 4-9pm; the walk will take about 10 minutes. The trail will be less scary from 4-6pm and geared toward older children from 6-9pm. Before or after your adventure, enjoy Halloween-themed games or purchase refreshments. All adults and children over the age of 3 walking the trail must register and pay the \$5 fee. Location: Ackerman Park. Min/Max: 20/400. (bt)

#/Link	Day	Date	Time	R/NR
<a href="#">126630</a>	Th	10/27	4-9pm	\$5 •
<a href="#">126629</a>	F	10/28	4-9pm	\$5 •

## Prom with Mom

Ages 3-10 with adult

Come have a special night with your favorite little guy. Dress to impress and dance the night away to music played by the DJ. A complimentary photo booth and an ice cream sundae bar are also included. Though the dance is primarily attended by moms and sons, dads, daughters, and other special adults are welcome to get in on the fun.

Fee is per person. Every adult and child attending must register. All children must be accompanied by an adult. Min/Max: 200/400. (ks)

**Date:** Friday, November 4

**Time:** 6:30-8:30pm

**Location:** Abbington Banquets

**R/NR:** \$30/\$45

**#/Link:** [126964](#) •

## Donuts with Santa

Ages 2 and up with adult

Don't miss this chance to visit with Santa while enjoying some delicious donut treats, hot cocoa, and coffee. Each table will also have activities and crafts, and each child will receive a gift from Santa as a remembrance of this special day. All adults and any child 2 years of age and older must register. Location: Lake Ellyn Boathouse. Min/Max: 25/75. (dm)

#/Link	Day	Date	Time	R/NR
<a href="#">126747</a>	Sa	12/3	8-9am	\$25/\$40 •
<a href="#">126748</a>	Sa	12/3	9:30-10:30am	\$25/\$40 •
<a href="#">126749</a>	Sa	12/3	11am-12pm	\$25/\$40 •





Photo courtesy of Christmas Sweater Shuffle



**FROM OUR FRIENDS AT**  
**Christmas Sweater Shuffle 5K**

**Canceled**

Due to extenuating circumstances, race organizers are unable to stage the 2022 Christmas Sweater Shuffle. The District thanks them for their past partnership and support of the Friends of Glen Ellyn Parks' Scholarship Fund.

**Candy Cane Hunt**

Ages 2-8 with adult

Search for hundreds of hidden candy canes, create a candy-cane-inspired craft project, and enjoy a story before we head outdoors for the hunt. In case of inclement weather, the hunt will be inside at the recreation center. In addition to the regular candy canes, there will be special candy canes that will lead to an extra special treat. Make sure to dress appropriately for the weather. Adults must accompany children; only children need to be registered. Location: Main Street Recreation Center. Min/Max: 20/40. (dm)

#/Link	Day	Date	Time	R/NR
<a href="#">126751</a>	F	12/16	1-2pm	\$10/\$15 ●
<a href="#">126752</a>	F	12/16	2:30-3:30pm	\$10/\$15 ●

**Polar Express PJ Party with Santa**

All ages

Enjoy the holiday season's favorite movie, The Polar Express, on the big screen. Wear your jammies for a fantastical time of wonder and magic as we use our imaginations and journey to the North Pole. We'll have hot cocoa and cookies, kids get to take home a holiday-themed craft project, and we'll have a surprise visit from the BIG GUY! Families should bring a blanket or lawn chair for the movie. Time will be allotted for photos with Santa after the movie and The Conductor will be available before the movie. Showing of Polar Express will begin promptly at 6:20pm. Adults must accompany children; only children need to be registered. Location: Ackerman SFC. Min/Max: 50/150. (ks)

#/Link	Day	Date	Time	R/NR
<a href="#">126750</a>	F	12/9	6-8:30pm	\$25/\$40 ●

**Flashlight Candy Cane Hunt**

Ages 8-12 with adult

Participate in the Flashlight Candy Cane Hunt for a night full of indoor crafts, cookies, and hot cocoa. The event will conclude with an outdoor hunt for candy canes under the moonlight. Don't forget to bring your own flashlight or headlamp to help in the search for hidden candy canes. Prizes awarded for those who locate the special candy canes. Event will take place snow or shine. Adults must accompany children; only children need to be registered. Location: Main Street Recreation Center. Min/Max: 20/40. (dm)

#/Link	Day	Date	Time	R/NR
<a href="#">126753</a>	Th	12/15	5-6pm	\$10/\$15 ●
<a href="#">126754</a>	Th	12/15	6:30-7:30pm	\$10/\$15 ●



## Santa on the Stoop

Ages 2-12 (Glen Ellyn Park District residents only)  
Tell Santa what you want for Christmas from your front porch when he visits you in person. He's coming to say, "Hello!" and drop off a special gift. Due to his busy schedule, he can only stay for about 10 minutes at each house - long enough to hear your request and wave from the walkway. Santa will knock on your door or ring the bell when he arrives, so be ready. Please make sure you are available between the hours listed for the event, as we are not able to accommodate special requests. Be sure to shovel your walk, Santa's not used to coming to the front door. Max: 80 homes. (jr)

**Date:** Saturday, December 17

**Time:** Santa will arrive between 1-4:30pm

**Fee:** \$25 first child; \$12 each additional child

**#/Link:** [127038](#) •

**Date:** Sunday, December 18

**Time:** Santa will arrive between 1-4:30pm

**Fee:** \$25 first child; \$12 each additional child

**#/Link:** [127039](#) •

## Sports and Fun with Santa

Ages 3-12

Santa Claus and his elves are taking a sleigh ride break! Team up with Santa's crew for some festive games, activities, and sports. Later, enjoy some pizza and water. It'll be a jolly good time. Min/Max: 20/100. (bt)

#/Link	Day	Date	Time	R/NR
<a href="#">127167</a>	Sa	12/17	10am-12pm	\$20/\$30 •

## You've Been Grinched

All ages

Grinch your family, friends, and neighbors with a surprise at-home candy cane display. The Grinch himself will scatter two dozen candy canes in the front yard and leave a fun "You've Been Grinched" sign on the door. Grinching will happen December 19-December 21 between the hours of 4pm-6pm. Additional candy canes can be purchased. Every member in your household account can sign up to Grinch someone. Open to Glen Ellyn Park District resident houses only. Max: 75. (ks)

**Fee per Grinching:** \$15

**Additional dozen candy canes:** \$5

**Registration deadline:** December 13 (or until full)

**#/Link:** [126989](#) •





# holes & knolls

MINI GOLF

845 PERSHING AVENUE, GLEN ELLYN  
 Must be a minimum of 50 degrees to open the courses. Check [gepark.org/hotline](http://gepark.org/hotline) for up-to-date information including weather-related closings.

## Mini Golf Fees

Child admission (ages 3-13)..... \$6  
 Regular admission (ages 14 and up)..... \$7  
 Seniors (ages 60 and up) and military..... \$6



MINI GOLF & SPLASH PARK

Extended Hours!

## Mini Golf Hours

### AUGUST 8 - SEPTEMBER 25

Monday-Saturday..... 10am-9pm  
 Sunday..... 11am-7pm

### SEPTEMBER 26 - OCTOBER 30

Monday-Friday..... 4pm-9pm  
 Saturday..... 11am-9pm  
 Sunday..... 11am-7pm

### HOLIDAY/SPECIAL HOURS

September 5 (Labor Day)..... 10am-3pm

## Mini Golf Party

Your party includes a two-hour rental of the Maryknoll Clubhouse party room and miniature golf admission. Food packages are also available. For more information and to book, please email [slim@gepark.org](mailto:slim@gepark.org).



# splash park

Extended Hours!

845 PERSHING AVENUE, GLEN ELLYN  
 Maryknoll Splash Park features 12 spray pieces including a water tower, team spray, water tunnel, and zero-depth pad. Must be a minimum of 65 degrees to open the splash park. Check [gepark.org/hotline](http://gepark.org/hotline) for up-to-date information including weather-related closings. See rules and regulations online at [gepark.org/splash-park](http://gepark.org/splash-park).



## Splash Park Fees

Infant admission (under age 1)..... Free  
 Child admission (ages 1-14 w/adult)..... \$3  
 Adult admission (ages 18 and up)..... \$1

## Splash Park Hours

### NOW - SEPTEMBER 25

Monday-Saturday..... 10am-6:30pm  
 Sunday..... 11am-7pm

### HOLIDAY/SPECIAL HOURS

September 5 (Labor Day)..... 10am-3pm

## Maryknoll Splash Park Private Rental

Rental includes private use of the splash park outside of normal business hours. For more information, email [slim@gepark.org](mailto:slim@gepark.org).

## Splash Park Party

Host your child's party at the Maryknoll Splash Park. Reserve any of our Maryknoll Park rental spaces and receive a discount on the daily admission fee for your party. For details and to book, email [slim@gepark.org](mailto:slim@gepark.org).

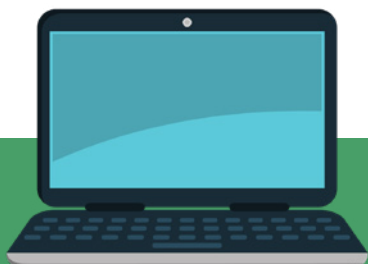


# preschool 2022-2023 School Year



At our Preschool, children learn through an academic and play-based curriculum to facilitate learning concepts including writing, science, vocabulary, numbers, shapes, math, and other cognitive abilities. Program activities serve many developmental purposes; participants learn problem-solving skills and how to sort out and organize new ideas. They develop an understanding of social awareness, and investigate and experiment with new possibilities. The academics incorporated into the program will ensure students are prepared to move to the next level and eventually be Kindergarten-ready.

Our program is a mixture of teacher-guided activities and playtime, with small and large group activities based around a weekly theme. Children engage in fine and large motor skill activities, art projects, music, books, dramatic play, cooking, writing and more. Children also have monthly visits from B#Sharp Music for Children and the Park District Naturalist. Please contact Jeannie Robinson at (630) 942-7267 or [jrobinson@gepark.org](mailto:jrobinson@gepark.org) with questions.



## preschool registration NOW ONLINE!

Registration for the Glen Ellyn Park District Preschool Program is now available online! Visit [gepark.org/register](http://gepark.org/register) to view available classes and register for open spots and waitlists.

### Questions or want to schedule a tour?

Email Jeannie Robinson at [jrobinson@gepark.org](mailto:jrobinson@gepark.org).

## preschool programs & requirements

### 2-YEAR-OLDS:

**Children must be 2 as of Mar. 15, 2022 for the Monday-Thursday classes or as of June 15, 2022 for the Friday class**

Geared toward having a successful first school-away-from-caregiver experience while preparing for the three-year-old program. Emphasis is placed on socialization skills and introduction to a structured class. In case of potty accidents, caregivers will be notified.

### 3-YEAR-OLDS:

**Children must be 3 as of Sept. 1, 2022**

Geared toward having a successful first school experience. Emphasis is placed on social skills, fine motor skills, shapes, colors, name recognition, following direction, sharing and play. Must be able to use the restroom independently.

### 4-YEAR-OLDS:

**Children must be 4 as of Sept. 1, 2022**

Designed for developing kindergarten readiness. Emphasis is placed on the development of academics through structured activities, introducing math, lower/upper case letters, letter sound recognition, writing/sight words, and developing independence. Must be able to use the restroom independently.

### 5-YEAR-OLDS:

**Children must turn 5 between Sept. 1, 2022 - Jan. 1, 2023**

Designed for developing kindergarten readiness. Emphasis is placed on the development of academics through structured activities, simple math, lower/upper case letters, letter sound recognition, writing/sight words, punctuation, capitalization, problem solving, and developing independence.



# registration

Registration will be for the complete school year, September 2022-May 2023.

## Open Registration

Registration is now open for both new and returning families. New this year, families registering for the Preschool Program may do so online at [gepark.org/register](http://gepark.org/register), or in person at the Spring Avenue or Main Street Recreation Centers. Caregivers must submit a copy of their child's birth certificate when registering in person. If registering online, birth certificates can be submitted to the office or by email to [jrobinson@gepark.org](mailto:jrobinson@gepark.org) by August 1, 2022. If a copy of your child's birth certificate is not received by August 1, your spot in the selected class may be forfeited.

## Schedule

The 2022-2023 preschool year begins the week of September 6, 2022 and concludes the week of May 8, 2023. Classes will not meet on legal public holidays as determined by the District 41 school calendar. There may be additional dates, which will be stated in your Glen Ellyn Park District Preschool Calendar.

## Payment

Preschool uses automatic billing/payments. A separate nonrefundable deposit of \$75 will be required upon registration. The yearly class fee is divided into six equal amounts charged to your credit card or e-check each month July-December. You may also pay for the entire year at registration.

Class	Location	Room	Days/Dates	Time	R/NR Annual or Installment Fees	#/ Link
<b>2-Year-Old</b> as of 6/15/22	Spring Avenue	Multi B	Fridays, Sept. 9-May 12	9-11am	\$611/916.50 annually or \$101.83/\$152.75 six installments	<a href="#">124539</a> Waitlist ●
<b>2-Year-Old</b> as of 3/15/22	Spring Avenue	Multi B	M/W, Sept. 7-May 10	9-11am	\$1,221/\$1,831.50 annually or \$203.50/\$305.25 six installments	<a href="#">124540</a> Waitlist ●
<b>2-Year-Old</b> as of 3/15/22	Spring Avenue	Multi B	Tu/Th, Sept. 8-May 11	9-11am	\$1,221/\$1,831.50 annually or \$203.50/\$305.25 six installments	<a href="#">124541</a> Waitlist ●
<b>3-Year-Old</b>	Main Street	Room 106	Tu/Th, Sept. 6-May 11	8:45-11:15am	\$1,353/\$2,029.50 annually or \$225.50/\$338.25 six installments	<a href="#">124544</a> Waitlist ●
<b>3-Year-Old</b>	Main Street	Room 106	M/W/F, Sept. 7-May 12	8:45-11:15am	\$2,030/\$3,045 annually or \$338.33/\$507.50 six installments	<a href="#">124543</a> Waitlist ●
<b>3-Year-Old</b>	Main Street	Room 204	Tu/Th, Sept. 6-May 11	8:45-11:15am	\$1,353/\$2,029.50 annually or \$225.50/\$338.25 six installments	<a href="#">124546</a> ●
<b>3-Year-Old</b>	Main Street	Room 204	M/W/F, Sept. 7-May 12	8:45-11:15am	\$2,030/\$3,045 annually or \$338.33/\$507.50 six installments	<a href="#">124545</a> ●
<b>3-Year-Old</b>	Spring Avenue	Preschool Room	Tu/Th, Sept. 6-May 11	8:45-11:15am	\$1,353/\$2,029.50 annually or \$225.50/\$338.25 six installments	<a href="#">124547</a> ●
<b>4-Year-Old</b>	Main Street	Room 114	M-Th, Sept. 6-May 11	8:45-11:15am	\$2,838/\$4,257 annually or \$473/\$709.50 six installments	<a href="#">124548</a> Waitlist ●
<b>4-Year-Old</b>	Main Street	Room 204	M-Th, Sept. 6-May 11	12:15-2:45pm	\$2,838/\$4,257 annually or \$473/\$709.50 six installments	<a href="#">124549</a> ●
<b>4-Year-Old</b>	Spring Avenue	Preschool Room	M/W/F, Sept. 7-May 12	8:45-11:15am	\$2,129/\$3,193.50 annually or \$354.83/\$532.25 six installments	<a href="#">124551</a> ●
<b>4-Year-Old</b>	Spring Avenue	Preschool Room	M-Th, Sept. 6-May 11	12:15-2:45pm	\$2,838/\$4,257 annually or \$473/\$709.50 six installments	<a href="#">124550</a> ●



## Preschool Playtime

### AFTER SCHOOL PROGRAM

Ages 3-4

This structured after school playtime program at Main Street Recreation Center (Room 114) includes free play, crafts, games, and gym time for your little one to further explore school. Register from one to four days per week for the full school year. Billing is on a monthly basis, beginning September 1. Space is limited per day. Please choose your day(s) upon registration. Min/Max: 8/12. (jr)

### Full School Year (32 Weeks)

R/NR-\$560/\$840

#/Link	Day	Date	Time
<a href="#">124558</a>	M	Sept. 12-May 8	11:45am-2:15pm ●
<a href="#">124559</a>	Tu	Sept. 13-May 9	11:45am-2:15pm ●
<a href="#">124560</a>	W	Sept. 14-May 10	11:45am-2:15pm ●
<a href="#">124561</a>	Th	Sept. 15-May 11	11:45am-2:15pm ●

## Kindergarten Enrichment

Ages 5-6 (must be born by September 1, 2017, and enrolled in Kindergarten)

The Glen Ellyn Park District offers a quality enrichment experience for kindergarten-age children attending half-day Kindergarten. This popular program, held at Main Street Recreation Center (Room 304), is designed to enrich and enhance the regular district Kindergarten program in the areas of motor skills, language arts, music, and creative arts. The goal is to allow each child to mature academically and socially in a creative, encouraging, and challenging learning environment.

Classes offer a balance of both structured and unstructured activities. Activity areas to choose from include blocks, quiet time, dramatic play, small and large motor activities as well as areas for music, art, literacy, and science/discovery. We will provide a space for kids to eat lunch after (AM) or prior (PM) to KE. Please send a sack lunch if you plan to have your child eat lunch at KE. Min/Max: 8/12. (jr)

R/NR-\$1,782/\$2,673 annually or \$297/\$445.50 six installments  
Plus a separate \$75 nonrefundable deposit.

#/Link	Day	Date	Time
<a href="#">124555</a>	Tu & Th	Sept. 6-May 11	8:45-11:30am ●
<a href="#">124556</a>	Tu & Th	Sept. 6-May 11	12:30-3:15pm ●
<a href="#">124553</a>	M & W	Sept. 7-May 10	8:45-11:30am ●
<a href="#">124554</a>	M & W	Sept. 7-May 10	12:30-3:15pm ●

AUTUMN 2022 • 20

● Registration open now ● Registration opens at 9am August 27



# adventure time

## BEFORE & AFTER SCHOOL CARE

The Adventure Time program is located at Forest Glen and Churchill Elementary Schools. Adventure Time staff provide supervised recreational activities, allowing time outside and indoors for students to unwind or gear up with sports, arts & crafts, and games. Quiet time is available for homework and relaxing with friends new and old.

### Registration

Registration will be for the complete school year (August-June). Children may be signed up for 3, 4 or 5 days a week: mornings, afternoons, or both. You may choose which days of the week you wish to use. A non-refundable \$50 deposit is required to register. Please note, children in kindergarten are welcome to enroll, but only for the AM session if they attend AM kindergarten or the PM session if they attend PM kindergarten.

#### FOREST GLEN ELEMENTARY SCHOOL

Address: 501 Elm St., Glen Ellyn • Min/Max per Day: 15/25

Days Per Week	7am-8:30am	3:30pm-6pm	7am-8:30am & 3:30pm-6pm	Deposit #/Link
3 Days	\$122	\$204	\$302	
4 Days	\$163	\$272	\$403	<a href="#">126561</a> ●
5 Days	\$204	\$340	\$504	

#### CHURCHILL ELEMENTARY SCHOOL

Address: 240 Geneva Rd., Glen Ellyn • Min/Max per Day: 15/25

Days Per Week	7am-8:30am	3:30pm-6pm	7am-8:30am & 3:30pm-6pm	Deposit #/Link
3 Days	\$122	\$204	\$302	
4 Days	\$163	\$272	\$403	<a href="#">126560</a> ●
5 Days	\$204	\$340	\$504	

### Information Packet

A program information packet will be emailed by the first week of August. For more information, contact Jeannie Robinson at [jrobinson@gepark.org](mailto:jrobinson@gepark.org) or (630) 942-7267.

### Payments

This program is billed monthly via an Electronic Fund Transfer (Visa, MasterCard, AMEX or Discover Card) for nine months during the school year. Payments will be made on the 1st of each month, with the first month due September 1 and concluding with the last payment on May 1.

### Important Dates

**START DATE:** First regular day of school (D41 calendar)

**END DATE:** Final day classes are in session (D41 calendar)

#### ADVENTURE TIME WILL NOT MEET:

Adventure Time will not meet on legal public holidays as determined by the District 41 school calendar or over Thanksgiving, Winter, and Spring breaks.

#### EARLY DISMISSAL & TEACHER INSTITUTE DAYS:

On early dismissal days, children will be dismissed to the Adventure Time room. On teachers' institute days Adventure Time will be operating at Forest Glen only (Churchill children should be dropped off at Forest Glen on these days) and will be available from 7am-6pm. Please provide a lunch. Special events and activities are planned on SIP and Teacher Institute days; more information will be provided in each month's newsletter.

#### WHAT TO BRING:

Provide a snack for both AM and PM participants, time will be allotted for children to eat before and after school. (jr)



# early childhood interest

**who to contact:**

(bt) Brad Thomas, [bthomas@gepark.org](mailto:bthomas@gepark.org)

(dm) David MacDonald, [dmacdonald@gepark.org](mailto:dmacdonald@gepark.org)

(ks) Katy Speck, [kspeck@gepark.org](mailto:kspeck@gepark.org)





**MUSICREATORS****Sing with Me**

Ages 1-4 with adult

Each music class is filled with fun and developmentally appropriate activities that will stimulate your child's imagination and improve their increasing vocabulary. Singing songs your child will gain independence, confidence, and learn self-expression. Using percussion instruments, scarves, hoops, and stick ponies, you will move with your child enjoying music time together while improving their gross and fine motor coordination. Every session is filled with new songs and new activities and many wonderful instruments. Location: Main Street Recreation Center. Min/Max: 5/12. No class 11/22. (ks)

#/Link	Day	Date	Time	R/NR
<a href="#">126980</a>	Tu	9/6-10/11	9:45-10:15am	\$81/\$101 ●
<a href="#">126981</a>	Tu	9/6-10/11	10:30-11am	\$81/\$101 ●
<a href="#">126982</a>	Tu	10/18-11/29	9:45-10:15am	\$81/\$101 ●
<a href="#">126983</a>	Tu	10/18-11/29	10:30-11am	\$81/\$101 ●

**MUSICREATORS****Songs of The Season**

Ages 3-5 with adult

Nurture growing independence through singing, instrument playing, chants and rhymes, listening activities, group dancing, literature, and stories that are creatively brought to life on xylophones and percussion instruments. Musical concepts (tempo, dynamics, and steady beat) are taught through songs, stories, movement and instrumentation activities that are hands-on and centered on the current season, outdoor fun and nature. Location: Main Street Recreation Center. Min/Max: 5/10. No class 11/22. (ks)

#/Link	Day	Date	Time	R/NR
<a href="#">126984</a>	Tu	9/6-10/11	11:15-11:50am	\$92/\$115 ●
<a href="#">126985</a>	Tu	10/18-11/29	11:15-11:50am	\$92/\$115 ●

**MUSICREATORS****Holiday Sing-Along**

Ages 1-5 with adult

Our festive sing-along will focus on Winter Wonderland and all the songs that capture the wonder of winter, the sounds of Christmas, and the excitement of Santa. This fun-for-all 40-minute music session is geared for the entire family, and is filled with singing, instruments such as shakers, tone bells, sticks, drums, and movement with hoops, scarfs, and reindeer to ride guaranteed to add to the spirit of the holidays. Location: Main Street Recreation Center. Min/Max: 4/12. (ks)

#/Link	Day	Date	Time	R/NR
<a href="#">126990</a>	Tu	12/6-12/13	9:45-10:25am	\$30/\$40 ●
<a href="#">126991</a>	Tu	12/6-12/13	10:35-11:20am	\$30/\$40 ●

**WEE HEART MUSIC****Music Together Family Classes**

Ages 5 and under with adult

Enjoy nine weeks of music, movement, learning, and growth as you sing, dance, and play musically together. Each semester introduces a new song collection. Tuition includes materials for at home listening and play. There is a \$50 discount for the second child. Location: Main Street Recreation Center. Min/Max: 5/12. (ks)

#/Link	Day	Date	Time	R/NR
<a href="#">126974</a>	M	9/12-11/7	9:15-10am	\$200/\$250 ●
<a href="#">126975</a>	M	9/12-11/7	10:15-11am	\$200/\$250 ●
<a href="#">126976</a>	M	9/12-11/7	11:15am-12pm	\$200/\$300 ●
<a href="#">126977</a>	Th	9/15-11/10	9:15-10am	\$200/\$250 ●
<a href="#">126978</a>	Th	9/15-11/10	10:15-11am	\$200/\$250 ●
<a href="#">126979</a>	Sa	9/17-11/12	9:15-10am	\$200/\$250 ●
<a href="#">126988</a>	Sa	9/17-11/12	10:15-11am	\$200/\$250 ●

## WEE HEART MUSIC

## December Sing-Alongs

Ages 5 and under with adult

Sing, dance, drum, and jingle your way into the holiday spirit with a three-week sing-along that's fun for the whole family. Jingle Bells, Frosty the Snowman, and Rudolph the Red-Nosed Reindeer are sure to enliven your December as you celebrate the holiday with your children. There is a \$12 discount for the second child. Location: Main Street Recreation Center. Min/Max: 5/12. (ks)

#/Link	Day	Date	Time	R/NR
<a href="#">126992</a>	Th	12/1-12/15	9:15-10am	\$51/\$64 ●
<a href="#">126993</a>	Th	12/1-12/15	10:15-11am	\$51/\$64 ●
<a href="#">126994</a>	Sa	12/3-12/17	9:15-10am	\$51/\$64 ●
<a href="#">126995</a>	Sa	12/3-12/17	10:15-11am	\$51/\$64 ●
<a href="#">126996</a>	M	12/5-12/19	9:15-10am	\$51/\$64 ●
<a href="#">126997</a>	M	12/5-12/19	10:15-11am	\$51/\$64 ●
<a href="#">126998</a>	M	12/5-12/19	11:15am-12pm	\$51/\$64 ●

## ROCK N' KIDS

## Tot &amp; Kid Rock

Ages 1-6

This interactive class has everyone on their feet. We all learn together while engaging in fun, creative, music-based activities, while using rhythm instruments and movement props. All class procedures are designed to keep staff and students safe. Activities are age appropriate by class and include songs and rhymes, rhythm and coordination, fine and gross motor, imagination and sensory, listening and following directions skills. Except for Kid Rock II classes, all children must be accompanied by an adult. Location: Main Street Recreation Center. Min/Max: 4/20. No class 11/25. (ks)

#/Link	Day	Date	Time	R/NR
<b>Tot Rock: Ages 12-23 months with adult</b>				
<a href="#">126987</a>	F	9/16-10/21	9:30-10:10am	\$75/\$94 ●
<a href="#">126986</a>	F	11/4-12/16	9:30-10:10am	\$75/\$94 ●
<b>Kid Rock I: Ages 2-3 with adult</b>				
<a href="#">126970</a>	F	9/16-10/21	10:15-10:55am	\$75/\$94 ●
<a href="#">126971</a>	F	11/4-12/16	10:15-10:55am	\$75/\$94 ●
<b>Kid Rock II: Ages 3-5 with adult</b>				
<a href="#">126999</a>	F	9/16-10/21	11:45am-12:25pm	\$75/\$94 ●
<a href="#">127000</a>	F	11/4-12/16	11:45am-12:25pm	\$75/\$94 ●
<b>Kid Rock III: Ages 1-6 with adult</b>				
<a href="#">126972</a>	F	9/16-10/21	11-11:40am	\$75/\$94 ●
<a href="#">126973</a>	F	11/4-12/16	11-11:40am	\$75/\$94 ●

## SHINING STAR PRODUCTIONS

## Little Actors Club

Ages 3-6

Children love this innovative drama class that develops their imagination and introduces little actors to the performing arts in a fun and creative atmosphere. Each week is an exciting adventure into the imagination with changing themes, music, and games. Club members learn theatre terms and gain enhanced spontaneity, creativity, and self-esteem. Themes for upcoming classes will be announced on a weekly basis. Most themes are not repeated for two years. Location: Main Street Recreation Center. Min/Max: 6/10. No class 11/9 and 11/23. (ks)

#/Link	Day	Date	Time	R/NR
<a href="#">127003</a>	W	9/14-10/19	5:30-6:15pm	\$60/\$75 ●
<a href="#">127004</a>	W	10/26-12/14	5:30-6:15pm	\$60/\$75 ●

## Safe Kids

Ages 3-6

This interactive class focuses on thinking safely and making safe choices in and around the home. Kids learn what to do in an emergency, when to call 911, and how to deal with strangers. Each child receives a safety packet to take home. Location: Spring Avenue Recreation Center. Min/Max: 6/10. (dm)

#/Link	Day	Date	Time	R/NR
<a href="#">126390</a>	Tu	9/13	4-5pm	\$25/\$40 ●
<a href="#">126756</a>	Tu	11/15	4-5pm	\$25/\$40 ●

## Safe Kids with First Aid

Ages 3-6

Safety and first aid go hand in hand. Children learn simple rules to think safely and make safe choices at home and away. We also present basic first aid information, including treatment of small cuts, bumps and bruises, nosebleeds, minor burns, and more. Each child receives a safety packet and creates a small first aid kit to take home. Location: Spring Avenue Recreation Center. Min/Max: 6/10. (dm)

#/Link	Day	Date	Time	R/NR
<a href="#">126391</a>	W	9/14	4-5pm	\$25/\$40 ●
<a href="#">126757</a>	W	11/16	4-5pm	\$25/\$40 ●





## Ackerman Adult/Tot Arts & Crafts

Ages 3-5 with adult

Adults play an integral part in helping their tots develop and explore their creative side through art. Instructors will facilitate the class and adults will guide the child through projects which may include coloring, building, sculpting clay, painting, and other crafts. Location: Ackerman SFC. Min/Max 5/25. (bt)

#/Link	Day	Date	Time	R/NR
<a href="#">126633</a>	Sa	9/10-9/24	11-11:45am	\$30/\$45 ●
<a href="#">126634</a>	F	9/9-9/23	9-9:45am	\$30/\$45 ●
<a href="#">126635</a>	Sa	10/1-10/15	11-11:45am	\$30/\$35 ●

## DISCOVERY LANGUAGE

### Introduction to Spanish

Ages 3-6

Discovery Language will introduce the Spanish language in a recreational and simple format. Students will be given an “ear” for pronunciation and build confidence in speaking and learning about another language. Students will learn “everyday” language via repetition, games, songs, and hands-on activities. Each class is progressive and adaptable according to the ability of the student. Students receive materials for them to keep. Location: Main Street Recreation Center. Min/Max: 5/12. No class 10/10. (dm)

#/Link	Day	Date	Time	R/NR
<a href="#">126382</a>	M	9/12-10/24	4:30-5:15pm	\$95/\$115 ●
<a href="#">126755</a>	M	11/7-12/12	4:30-5:15pm	\$102/\$122 ●

## T-REXPLORERS

### Dino Hour in the Park

Ages 3-5 with adult

Dinosaur fans will have a dino-mite experience with Dino Hour in the Park. Our popular Dino Hour class is brought outdoors where your little one will get to examine real dinosaur fossils, enjoy a dino-themed story and craft, and then dig in the sand for dinosaur puzzle pieces to assemble. Location: Lake Ellyn Park. Min/Max: 6/12. (dm)

#/Link	Day	Date	Time	R/NR
<a href="#">126759</a>	W	9/21	4:30-5:30pm	\$37/\$54 ●
<a href="#">126760</a>	Sa	10/8	10-11am	\$37/\$54 ●
<a href="#">126761</a>	Sa	10/8	11:30am-12:30pm	\$37/\$54 ●

## T-REXPLORERS

### Dino Hour

Ages 3-5 with adult

Bring your little one for an hour of dinosaur discovery fun. They will see real dinosaur fossils, listen to a story, make a craft to take home, and dig in the sand to assemble dinosaur puzzle pieces. Location: Main Street Recreation Center. Min/Max: 6/12. (dm)

#/Link	Day	Date	Time	R/NR
<a href="#">126762</a>	W	12/7	4:30-5:30pm	\$37/\$54 ●

## GLEN ELLYN PUBLIC LIBRARY

### Storytime in the Park *Free!*

All ages

Come out to your favorite neighborhood parks for songs, rhymes, and stories. This program is designed for children and their grownups. Please plan to attend and be engaged with your child for this program. Drop offs are not allowed. In case of inclement weather, please check the Glen Ellyn Public Library’s social media pages for updates. Contact the Glen Ellyn Public Library at (630) 790-6731 for more details.

Day	Date	Time	Location	R/NR
Tu	9/6-10/25	10:30-11am	Danby Park	Free
W	9/7-10/26	10:30-11am	Village Green Park	Free

## GLEN ELLYN PUBLIC LIBRARY

### PJ Storytime in the Park *Free!*

All ages

Enjoy songs, rhymes, and stories in the park before bedtime. Don’t forget to bring a blanket and bug spray. Drop offs are not allowed. In case of inclement weather, updates will be posted on the Glen Ellyn Public Library’s social media pages. Call the Glen Ellyn Public Library at (630) 790-6731 for more details.

Day	Date	Time	Location	R/NR
W	9/21	7-7:30pm	Lake Ellyn Park	Free
W	10/19	7-7:30pm	Lake Ellyn Park	Free



# youth and teen interest

## who to contact:

- (bt) Brad Thomas, [bthomas@gepark.org](mailto:bthomas@gepark.org)
- (dm) David MacDonald, [dmacdonald@gepark.org](mailto:dmacdonald@gepark.org)
- (ks) Katy Speck, [kspeck@gepark.org](mailto:kspeck@gepark.org)
- (lb) Laurie Bellmar, [lbellmar@gepark.org](mailto:lbellmar@gepark.org)







## Tween Night

Ages 8-12

Get out and have fun! Tweens will take over the gym and turf at Ackerman SFC for a night of sports, games, and other fun activities. We will have pizza for all participants. Adults must accompany their child for check-in and check-out. Location: Ackerman SFC. Min/Max: 20/100. (bt)

#/Link	Day	Date	Time	R/NR	
<a href="#">126492</a>	F	9/9	6-9pm	\$25/\$40	●
<a href="#">127166</a>	F	12/23	6-9pm	\$25/\$40	●

## Kids' Night Out

Ages 5-12

Children will enjoy a night out with friends participating in games, sports drills, and arts & crafts all while supervised by the Ackerman SFC team. Participants will receive a treat and water. Adults must accompany their children for check-in and check-out. If weather permits, this will be held outdoors. Location: Ackerman SFC. Min/Max: 10/25. (bt)

#/Link	Day	Date	Time	R/NR	
<a href="#">126636</a>	F	9/30	6-8pm	\$25/\$35	●

## Ackerman Sports & Fun Day-Off School Camp

Ages 5-12

This athletic camp emphasizes instruction, participation, and general fitness. Participants will learn more about sports and partake in individual activities while still being part of a group setting including skill drills, arts and crafts, relay races, exercising, and socializing. Location: Ackerman SFC. Min/Max: 5/25. (bt)

#/Link	Day	Date	Time	R/NR	
<a href="#">126681</a>	M-W	11/21-11/23	9am-12pm	\$50/\$65	●
<a href="#">126682</a>	M-W	11/21-11/23	12:30-3:30pm	\$50/\$65	●
<a href="#">126683</a>	M-W	12/19-12/22	9am-12pm	\$65/\$80	●
<a href="#">126684</a>	M-W	12/19-12/22	12:30-3:30pm	\$65/\$80	●
<a href="#">126685</a>	M-W	12/26-12/29	9am-12pm	\$65/\$80	●
<a href="#">126686</a>	M-W	12/26-12/29	12:30-3:30pm	\$65/\$80	●



**CHESS WIZARDS**

**Checkmate**

Ages 6-12

Chess Wizards offers fun, intellectual, and challenging chess education and tournament experiences to children of all abilities and ages. In addition to weekly chess lessons and traditional gameplay, we incorporate variations of chess games that build teamwork and foster a genuine enjoyment of a game over a thousand years old. All experience levels are welcome. Location: Main Street Recreation Center. Min/Max: 10/20. No class 11/22. (dm)

#/Link	Day	Date	Time	R/NR
<a href="#">126411</a>	Tu	9/6-10/18	4-5pm	\$170/\$220 ●
<a href="#">126773</a>	Tu	10/25-12/13	4-5pm	\$170/\$220 ●

**DISCOVERY LANGUAGE**

**Beginners Spanish**

Ages 6-12

This program aims to enhance each student’s motor skills as well as linguistic skills. Movement and physical activity will be incorporated into each Spanish lesson. With our variety of immersion activities, from workbooks to relay races, art projects, and science experiments, your student will develop a love for learning and never lose interest in the Spanish language. Each class is progressive and adaptable according to the ability of the student. Location: Main Street Recreation Center. Min/Max: 5/12. No class 10/10. (dm)

#/Link	Day	Date	Time	R/NR
<a href="#">126383</a>	M	9/12-10/24	5:30-6:15pm	\$95/\$115 ●
<a href="#">126778</a>	M	11/7-12/12	5:30-6:15pm	\$102/\$122 ●

**MAGIC OF GARY KANTOR**

**Abracadabra: Magic Class**

Ages 5-12

Children are guaranteed a great time as they learn new, age-appropriate tricks each class: cards, ropes, coins, mind-reading, and more. The tricks appear difficult but are easy to learn and perform. All materials are provided; each child receives a magic kit to take home. Location: Spring Avenue Recreation Center. Min/Max: 5/40. (dm)

#/Link	Day	Date	Time	R/NR
<a href="#">126413</a>	M	9/12	4-4:55pm	\$22/\$33 ●
<a href="#">126774</a>	Th	10/20	6:45-7:40pm	\$22/\$33 ●
<a href="#">126775</a>	W	12/14	6:45-7:40pm	\$22/\$33 ●

**DUNHAM WOODS FARM**

**Horsemanship for Kids**

Ages 10-17

Join in the fun with beginning riding lessons. Participants will explore the proper ways to groom, tack, and handle horses. In the saddle, you will learn the basics of riding at the walk and trot. Lessons will be held in our indoor arena during inclement weather. Make up class held at the end of the six weeks. First day of class is orientation and groundwork. Riders should wear jeans or Jodhpur pants and hard soled riding or hiking boots with a small, low heel. Must have an approved riding helmet or bicycle helmet to ride. Location: Dunham Woods Farm, Elgin. Min/Max: 1/4. (dm)

#/Link	Day	Date	Time	R/NR
<a href="#">126780</a>	Sa	10/29-12/3	1:30-2:30pm	\$175/\$250 ●

**Babysitting for Success**

Ages 10-15

Be the best babysitter you can be. In this class, students engage in discussion, role playing, and practical experiences to learn diapering, feeding, playing with children, child development, handling emergencies, and first aid. Students should bring a snack and a doll to class. Students are awarded certificates upon completion. Resource materials are included. Location: Spring Avenue Recreation Center. Min/Max: 8/12. (dm)

#/Link	Day	Date	Time	R/NR
<a href="#">126776</a>	Tu/Th/Tu	10/11-10/18	10/11 & 13: 4:30-7:30pm 10/18: 4:30-7:30pm	\$80/\$120 ●
<a href="#">126777</a>	Tu/Th/Tu	12/6-12/13	12/6 & 12/8: 5-8pm 12/13: 5-7pm	\$80/\$120 ●



**MAD SCIENCE**

## NASA Academy of Future Space Explorers

Ages 5-11

In NASA Academy of Future Space Explorers, students will take a voyage of discovery into the atmosphere and beyond as we explore planets, moons, and other space phenomena in our solar system. Things will heat up as we examine the sun and other stars and discover the difficulties of space travel, and how astronauts meet the challenges of living in space. Kids will love to participate in a real 'NASA' style rocket launch. Students will create NASA take homes, including a space telescope, a cosmic disk, and so much more. Location: Main Street Recreation Center. Min/Max: 12/25. (dm)

#/Link	Day	Date	Time	R/NR
<a href="#">126765</a>	Th	9/8-10/13	4:30-5:30pm	\$170/\$220 ●

**MAD SCIENCE**

## Crazy Chemworks

Ages 5-11

Students will learn the ins and outs of a chemistry laboratory and what defines the three states of matter. Come with us as we explore chemical reactions, do chemistry in a flash, get stuck to sticky stuff, and make time for slime. Kids will have lots of experiments to do and get cool Crazy Chemworks to take home, including a set of laboratory equipment and molecule models. Location: Main Street Recreation Center. Min/Max: 12/25. No class 11/24. (dm)

#/Link	Day	Date	Time	R/NR
<a href="#">126766</a>	Th	10/20-12/1	4:30-5:30pm	\$170/\$220 ●

**LITTLE MEDICAL SCHOOL**

## Little Veterinarian School – Dog

Ages 6-12

After “adopting” their very own plush puppy, students will roleplay the key responsibilities of a veterinarian, including how to properly perform a nose-to-tail exam as well as learning how to sew stitches, remove ticks, make healthy treats, and vaccinate their dog. Location: Main Street Recreation Center. Min/Max: 10/20. (dm)

#/Link	Day	Date	Time	R/NR
<a href="#">126764</a>	Th	9/22-10/27	5:30-6:30pm	\$190/\$240 ●

**LITTLE MEDICAL SCHOOL**

## Little Doctor School

Ages 6-12

Basic anatomy, medical instruments, and prepping for surgery. Through role-play and activities, students will learn the key responsibilities of a doctor and explore the heart, lungs, and digestion. Students will use real medical instruments such as stethoscope, reflex hammer, and blood pressure cuff and practice scrubbing, suturing, and tying knots like a real surgeon. Location: Main Street Recreation Center. Min/Max: 10/20. (dm)

#/Link	Day	Date	Time	R/NR
<a href="#">126763</a>	Th	9/22-10/27	4:15-5:15pm	\$170/\$220 ●

## Ackerman Arts and Crafts

Ages 6-12

Young makers will dabble in all kinds of activities to spark their creativity such as paper art, jewelry making, clay sculpting, and more. Every session we pick new kid-friendly projects themed around the season or holiday. All materials are provided. The best part? Kids take home their projects, but the mess stays at Ackerman. Location: Ackerman SFC. Min/Max: 5/25. (bt)

#/Link	Day	Date	Time	R/NR
<a href="#">126641</a>	Sa	10/8-10/22	10-11am	\$30/\$45 ●
<a href="#">126642</a>	Sa	11/5-11/19	10-11am	\$30/\$45 ●

**YOUNG REMBRANDTS**

## Double the Fun Drawing

Ages 5-12

This class will awaken the inner Artist! We explore all the basics of visual arts, in a fun and confident setting that ensures success for every child. Basic drawing, portraits, action, and cartooning. Students complete several different projects and learn to draw whimsical characters, animals, everyday objects, and action scenes. Location: Main Street Recreation Center. Min/Max: 7/12. (ks)

#/Link	Day	Date	Time	R/NR
<a href="#">127180</a>	Sa	9/10-9/24	10am-12pm	\$98/\$122 ●
<a href="#">127181</a>	Sa	10/1-10/15	10am-12pm	\$98/\$122 ●
<a href="#">127182</a>	Sa	11/5-11/19	10am-12pm	\$98/\$122 ●
<a href="#">127183</a>	Sa	12/3-12/17	10am-12pm	\$98/\$122 ●

**BRICKS 4 KIDZ**

**LEGO® Engineering: Amusement Park Adventures**

Ages 5-9

Delve into the history and mechanics of your favorite amusement park rides in this imaginative unit. Students will use LEGO® technic kits to construct a Ferris Wheel, Carousel Swing, Swing Boat Ride, and a Merry Go Round. Kits incorporate beams, axles, gears, motors, and battery packs to make creations come to life. Lessons incorporate math concepts and principles of physics, described in a way children can understand, such as “G-force” inertia and momentum. Location: Main Street Recreation Center. Min/Max: 10/16. (dm)

#/Link	Day	Date	Time	R/NR
<a href="#">126966</a>	M	9/12-10/3	5-6pm	\$80/\$120 •

**BRICKS 4 KIDZ**

**STEM Workshop: Jurassic Brick Land**

Ages 5-9

Put on your hiking boots and camouflage...you’re about to enter Jurassic Brick Land. Students will build a world that comes to life with gentle Brontosaurus, ferocious Velociraptor, terrifying T. Rex, and more. Each week students will learn fascinating facts about amazing dinosaurs and other extinct animals that roamed the earth and swam the seas during the age of dinosaurs. Kits and model plans incorporate gears, axles, motors, battery packs, remote controls, and other technic Lego® components. Location: Main Street Recreation Center. Min/Max: 10/16. (dm)

#/Link	Day	Date	Time	R/NR
<a href="#">126967</a>	M	10/17-11/7	5-6pm	\$80/\$120 •

**BRICKS 4 KIDZ**

**LEGO® Engineering: Gadgets and Gizmos**

Ages 5-9

Students love our interactive Bricks 4 Kidz models. This unit is all about the fun of exploring and experimenting with what you’ve built. From a motorized optical illusion machine to a spin art model, kids will love playing with their creations. But don’t worry, we sneak in lots of learning, too – the students will also have a blast constructing a mini-figure launcher and learning about gear ratios with the paper crinkler model. Location: Main Street Recreation Center. Min/Max: 10/16. (dm)

#/Link	Day	Date	Time	R/NR
<a href="#">126968</a>	M	11/21-12/12	5-6pm	\$80/\$120 •

**BRICKS 4 KIDZ**

**LEGO® City: Engineering and Architects Camp**

Ages 6-9

Campers will work to design and build the city of their dreams, using LEGO® bricks. The architects may plan a road, propose a monument, design a park or school, or imagine a skyscraper. Builders will put on their “safety hats” and assemble motorized models of construction equipment, vehicles, amusement parks, and many other city related builds. Using kits and model plans, campers will construct one-of-a-kind LEGO® City models using LEGO® bricks. Daily take home crafts and more. Location: Main Street Recreation Center. Min/Max: 10/16. (dm)

#/Link	Day	Date	Time	R/NR
<a href="#">126969</a>	M-F	12/19-12/23	1-4pm	\$215/\$300 •





## LISA LOMBARDI

**Autumn Extravaganza Slime**

Ages 6-12

Kids will have the slime of their life coloring slime the palette of autumn leaves. Each participant will create slime that is either gold, red, or orange, the colors which make autumn spectacular. Then we will scent it like pumpkin pie, marshmallow fireside, maple bacon donuts, or caramel apples. Kids keep the slime they create. Location: Main Street Recreation Center. Min/Max: 8/15. (dm)

#/Link	Day	Date	Time	R/NR
<a href="#">126416</a>	M	9/12	6-7pm	\$29/\$44 ●

## LISA LOMBARDI

**Spooky Thrills and Chills of Fall Ice Cream**

Ages 5-12

Making and eating ice cream is a tasty way to introduce early chemistry teachings to children and helps build self-esteem. Kids can become experts on this billion-dollar industry as they make a batch of homemade fall-themed ice cream in a bag (think pumpkin, cider donut, and creepy gummy worm flavors). We will also explore the science and history of beloved amusement park treats – Dippin' Dots, waffle cones, and the first novelty ice cream bar, the Eskimo Pie. Location: Spring Avenue Recreation Center. Min/Max: 8/22. (dm)

#/Link	Day	Date	Time	R/NR
<a href="#">126785</a>	Tu	9/27	4:30-5:30pm	\$30/\$45 ●

## LISA LOMBARDI

**Halloween Gore-Tastic**

Ages 6-12

Investigate what makes Halloween so chilling in this electrifying S.T.E.M. workshop. Kids have fun with weird and horrifying Halloween concepts like puking pumpkins, fizzing ghosts, creepy candy experiments, eek estimation jar, and more ghoulish Halloween exploration. Kids will have such a blast they won't even realize they are building self-esteem, boosting their socialization, and acquiring new science concepts. Themed souvenirs included. Location: Spring Avenue Recreation Center. Min/Max: 8/22. (dm)

#/Link	Day	Date	Time	R/NR
<a href="#">126786</a>	W	10/12	4-5:30pm	\$30/\$45 ●

## LISA LOMBARDI

**Teen Transformation Lab**

Ages 13-17

Today's teenager has many dreams but many distractions. This lab will help them manage those distractions and get on track to their finish line. Lessons in communication hacks, self-esteem, reputation repair, college prep secrets, warding off worries, friend drama, motivation, bully management, and goal setting will all be revealed. Little pivots can lead to huge changes. The first 60-minutes is for teens only and the final 30 minutes is open for grownups to join in and ask questions. Treats will be served. Location: Spring Avenue Recreation Center. Min/Max: 8/25. (dm)

#/Link	Day	Date	Time	R/NR
<a href="#">126787</a>	M	10/17	6-7:30pm	\$49/\$65 ●

## LISA LOMBARDI

**Halloween Glow Slime**

Ages 6-12

Light up the path for trick or treating with the ultimate glow slime lab. Make it creepy or keep it glowing. Kids take home their glowing creations. Life coaching lessons will be addressed on how we can stay glowing and feeling happy throughout the school year. Location: Main Street Recreation Center. Min/Max: 8/15. (dm)

#/Link	Day	Date	Time	R/NR
<a href="#">126788</a>	Tu	10/18	6:45-7:40pm	\$30/\$45 ●

## LISA LOMBARDI

**All Spun Up**

Ages 7-13

National Cotton Candy Day is taking place on December 7. Much like this sugary, sticky, webbed treat, kids often get a bit spun up at times too. Feeling anxious is on the rise and is considered one of America's top health problems. Sometimes just taking a deep breath isn't enough. Through funny and elaborate dramatizations like Cotton Candy Chaos, Poppin' Pete, Ants at the Picnic, 1-2-3 Whack, and more, kids will garner 15 unique strategies to use after they depart this workshop. Just for fun, we will also enjoy the favorite theme park treat of cotton candy. Location: Spring Avenue Recreation Center. Min/Max: 8/22. (dm)

#/Link	Day	Date	Time	R/NR
<a href="#">127213</a>	M	11/14	6-7pm	\$29/\$40 ●



**LISA LOMBARDI**

**Santa's Snowstorm Lab**

Ages 5-12

No snow on the ground? No problem. We will make our own fluffy, faux, scented science snow in Santa's Snow Lab. Color it, scent it, add in snowballs, and more. Class will culminate with making an edible snowman with marshmallows. Kids keep the faux snow they make. Location: Spring Avenue Recreation Center. Min/Max: 8/22. (dm)

#/Link	Day	Date	Time	R/NR
<a href="#">126790</a>	Tu	12/6	4:30-5:30pm	\$29/\$40 •

**MYPLATE2YOURS**

**Kids Can Cook**

Ages 6-12

When kids cook, they learn life skills, and practice math and science. Nutrition and kitchen skills will be covered in this class. At the end of the session, your child will sample two delicious recipes, understand the benefits of good nutrition, and have the confidence that kids can cook. Location: Spring Avenue Recreation Center. Min/Max: 5/15. (dm)

#/Link	Day	Date	Time	R/NR
<i>Festive Papas Tapas and Tomato and Goat Cheese Dip</i>				
<a href="#">126781</a>	W	9/7	4-5:30pm	\$35/\$50 •
<i>Turkey Chili with Homemade Cornbread</i>				
<a href="#">126782</a>	W	10/19	4-5:30pm	\$35/\$50 •
<i>Zuppa Italiana and Wedge Salad</i>				
<a href="#">126783</a>	W	11/16	4-5:30pm	\$35/\$50 •

**MYPLATE2YOURS**

**Kids Can Cook: Holiday Gift Making**

Ages 6-12

Young chefs can give the gift of food to loved ones this holiday season. Participants will be making sweet breads in a jar. Recipients will savor this special edible gift and the effort your little foodie put into it. Preview samples will be available. Location: Spring Avenue Recreation Center. Min/Max: 5/15. (dm)

#/Link	Day	Date	Time	R/NR
<a href="#">126784</a>	W	12/7	4-5:30pm	\$35/\$50 •

**GLITZY GIRLZ**

**Adult/Child Holiday Memories Gift Boutique**

Ages 3-10

Make three adorable holiday gifts perfect for any recipient. With help from Glitzy Girlz staff and their grownups, each child will make a ceramic piece, wooden item, and jewelry item. Paints, glitter glues, stickers, and other embellishments will be provided. A unique DIY wrapping station adds creative ways to conceal your surprises. Only children need to register. Location: Spring Avenue Recreation Center. Min/Max: 5/25. (ks)

#/Link	Day	Date	Time	R/NR
<a href="#">127002</a>	Th	12/8	6-7:15pm	\$38/\$57 •

**GLITZY GIRLZ**

**Get Pampered Spa Divas**

Ages 5-11

Join us for a night out with your pals. Staff will be pampering everyone with hairdo fun, braids and sparkles. We'll teach manicures and pedicures along with polishing nails using glitter, neon, and pastels polishes. The night ends with music, dancing, disco lights, and props for pictures. Participants will receive a foot/nail brush, cuticle stick, mini buffer, and jewelry glam bag to use and keep. Children are welcome to come in their PJs. Location: Spring Avenue Recreation Center. Min/Max: 5/20. (ks)

#/Link	Day	Date	Time	R/NR
<a href="#">127001</a>	Th	10/13	6-7:15pm	\$38/\$55 •



## Sew Simple: Hand Sewing

Ages 5-7

The art of sewing helps children develop their fine motor skills, practice patience, and build confidence. Learn hand sewing as you make fun projects with step-by-step instructions. Participants will learn various hand stitches, how to thread a needle, and how to sew on a button in this beginner level class. Location: Spring Avenue Recreation Center. Min/Max: 3/10. (dm)

#/Link	Project	Day	Date	Time	R/NR
<a href="#">126457</a>	Stuffed Pig	Tu	9/13	4-5:30pm	\$25/\$35 ●
<a href="#">126767</a>	Pumpkin	Tu	10/18	4-5:30pm	\$25/\$35 ●
<a href="#">126768</a>	Teddy Bear	Tu	11/15	4-5:30pm	\$25/\$35 ●
<a href="#">126769</a>	Stocking	Tu	12/13	4-5:30pm	\$25/\$35 ●

## Sew Simple: Machine Sewing

Ages 8-12

Sewing beginners will expand their creativity by learning how to operate a sewing machine, while participants with more experience will strengthen their sewing ability. Everyone in this sewing class will create a pencil case with a Velcro closure. The basic skills taught in this class will provide a great foundation for other sewing classes and projects. Bring your own sewing machine or use ours. All supplies included. Location: Spring Avenue Recreation Center. Min/Max: 2/8. (dm)

#/Link	Day	Date	Time	R/NR
<a href="#">126772</a>	Th	10/6	4-6pm	\$45/\$60 ●

## Fabric Book Bag Creations

Ages 7-11

Each participant will learn the step-by-step process of creating their own personalized stamp and fabric book bag. Once the stamp is created, we will use it and colored fabric paints to create designs on the book bag. All experience levels are welcome. Location: Spring Avenue Recreation Center. Min/Max: 2/10. (dm)

#/Link	Day	Date	Time	R/NR
<a href="#">126770</a>	Th	9/8	4-6pm	\$45/\$60 ●
<a href="#">126771</a>	Th	10/13	4-6pm	\$45/\$60 ●

## Piano for Kids: Private Lessons

Ages 5-15

Start or continue your piano journey. In-person 1:1 private and 2:1 semi-private lessons are available with Ms. Monica at Main Street Recreation Center. All students are invited to participate in a holiday piano party December 13th from 5-6:15pm, where everyone can enjoy treats, play music games and win prizes. Each student is invited to perform a song at the party. See the online description for more information and materials list. (ks)

#/Link	Day	Date	Time	R/NR
<b>Semi-Private Lessons: Ages 5-14</b>				
<a href="#">127025</a>	Tu	9/6-12/6	4:30-5pm	\$300/\$375 ●
<a href="#">126905</a>	Tu	9/6-12/6	5:30-6pm	\$300/\$375 ●
<b>Private Lessons: Ages 6-15</b>				
<a href="#">126898</a>	M	9/12-11/28	7-7:30pm	\$380/\$475 ●
<a href="#">126899</a>	M	9/12-11/28	7:30-8pm	\$380/\$475 ●
<a href="#">126900</a>	Tu	9/6-12/6	4-4:30pm	\$380/\$475 ●
<a href="#">126901</a>	Tu	9/6-12/6	5-5:30pm	\$380/\$475 ●
<a href="#">126902</a>	Tu	9/6-12/6	5:30-6pm	\$380/\$475 ●
<a href="#">126903</a>	Tu	9/6-12/6	6-6:30pm	\$380/\$475 ●
<a href="#">126904</a>	Tu	9/6-12/6	6:30-7pm	\$380/\$475 ●
<a href="#">127026</a>	Tu	9/6-12/6	7-7:30pm	\$380/\$475 ●
<a href="#">127027</a>	Th	9/1-12/8	4-4:30pm	\$380/\$475 ●
<a href="#">127028</a>	Th	9/1-12/8	4:30-5pm	\$380/\$475 ●
<a href="#">127029</a>	Th	9/1-12/8	5-5:30pm	\$380/\$475 ●
<a href="#">127030</a>	Th	9/1-12/8	5:30-6pm	\$380/\$475 ●

## Piano for Kids: Beginner Group Lessons

Ages 5-13

This is a great opportunity for young children that are new to the piano or older beginners to learn piano in a fun setting with others. Students will engage in age-appropriate instruction as they learn basic keyboard skills, note reading, musical concepts, simple songs, and even some improvisation. Students should have a piano or keyboard at home. An iPad is helpful but not necessary for additional at-home practice. \$15 materials fee is due the first day of class. Location: Main Street Recreation Center. Min/Max: 1/1. (ks)

#/Link	Ages	Day	Date	Time	R/NR
<a href="#">126895</a>	5-8	M	9/12-12/5	4:15-5pm	\$160/\$200 ●
<a href="#">126896</a>	5-8	M	9/12-12/5	5:15-6pm	\$160/\$200 ●
<a href="#">126897</a>	9-13	M	9/12-12/5	6:15-7pm	\$160/\$200 ●

**SHINING STAR PRODUCTIONS****Young Actors Club**

Ages 6-8

This fast-paced drama class is a new and exciting adventure into the imagination with changing themes, music, and games. You'll even learn a short song and a new joke every week. Learn theatre terms, enhance spontaneity, build self-esteem, and have a blast. Themes for upcoming classes will be announced on a weekly basis. Every session is different, and most themes are not repeated for two years. Location: Main Street Recreation Center. Min/Max: 6/10. No class 11/9 and 11/23. (ks)

#/Link	Day	Date	Time	R/NR
<a href="#">127005</a>	W	9/14-10/19	6:30-7:15pm	\$60/\$75 ●
<a href="#">127006</a>	W	10/26-12/14	6:30-7:15pm	\$60/\$75 ●

**Mini Actors**

Ages 6-8

Does your child love to perform? This class will teach them the fundamentals of acting, movement, and many other theatre techniques. Each class will be filled with games and exercises to encourage creativity and engagement. A short performance on the last day of class will give the kids their time to shine. Location: Main Street Recreation Center. Min/Max: 4/20. (ks)

#/Link	Day	Date	Time	R/NR
<a href="#">127007</a>	Tu	9/13-10/18	4:45-5:30pm	\$60/\$75 ●
<a href="#">127008</a>	Tu	10/25-11/29	4:45-5:30pm	\$60/\$75 ●

**Theatre Prep**

Ages 9-15

Working with scripts and other production materials, students will learn short acting scenes from a variety of theatrical numbers. This class will work with games and exercises, all geared towards getting your actor ready for the stage. The session will end with a performance for family and friends. Location: Main Street Recreation Center. Min/Max: 4/20. (ks)

#/Link	Day	Date	Time	R/NR
<a href="#">127009</a>	Tu	9/13-10/18	5:45-6:30pm	\$60/\$75 ●
<a href="#">127010</a>	Tu	10/25-11/29	5:45-6:30pm	\$60/\$75 ●

**Theatre Improv & Games**

Ages 8-13

Improvisational theatre is a form of acting in which most or all of what is performed is unplanned or unscripted. Participants will learn fundamentals of improvisation and work together to create fun and spontaneity. This class will be full of acting games, high energy movement, and creative techniques to expand your imagination and comfort level. Location: Main Street Recreation Center. Min/Max: 4/20. (ks)

#/Link	Day	Date	Time	R/NR
<a href="#">127011</a>	Tu	9/13-10/18	6:45-7:30pm	\$60/\$75 ●
<a href="#">127012</a>	Tu	10/25-11/29	6:45-7:30pm	\$60/\$75 ●

**Audition Workshop**

Ages 7-18

Amateur actors will learn all about the audition process as well as techniques to use when you try out for a theatre production. This workshop is designed to help our actors feel more confident and prepared. Actors will sing, dance, and act from parts of our upcoming musical, Into the Woods Jr! Location: Main Street Recreation Center. Min/Max: 6/20. (ks)

#/Link	Day	Date	Time	R/NR
<a href="#">127013</a>	W	12/7	5:30-7:30pm	\$15/\$20 ●
<a href="#">127014</a>	Th	12/15	5:30-7:30pm	\$15/\$20 ●

**Halloween Spooktacular Makeup Workshop**

Ages 5-10

Get into the Halloween spirit. Learn how to use face paints to bring characters to life with guided directions and examples. Each week features a different character – perfect for a costume or just for fun. Location: Main Street Recreation Center. Min/Max: 3/10. (ks)

#/Link	Day	Date	Time	R/NR
<b>Scarecrows</b>				
<a href="#">127031</a>	M	10/10	6-7pm	\$40/\$50 ●
<b>Jack-O-Lanterns</b>				
<a href="#">127034</a>	M	10/17	6-7pm	\$40/\$50 ●
<b>Skeletons</b>				
<a href="#">127032</a>	M	10/24	6-7pm	\$40/\$50 ●



## Halloween Glam Makeup Workshop

Ages 8-15

Halloween is the perfect excuse to play around with paint and glitter. Explore your creativity and transform yourself into a character based on the week's theme. Students will get to experience using face paint with guided directions and examples. Location: Main Street Recreation Center. Min/Max: 3/10. (ks)

#/Link	Day	Date	Time	R/NR
<b>Mermaids</b>				
<a href="#">127035</a>	Tu	10/18	6-7:30pm	\$50/\$63 ●
<b>Sugar Skulls</b>				
<a href="#">127033</a>	Tu	10/25	6-7:30pm	\$50/\$63 ●

## The Art of Nature Journaling with Liita Forsyth

Ages 7-14

Spend Mondays after school with Liita Forsyth – artist, naturalist, teacher, and proprietor of The Little Bits Workshop. Students will learn how to make a hand bound journal. Time will be spent observing nature firsthand at Lake Ellyn. Students will come inside the Boathouse for art class, drawing and painting what they saw. Each week they will learn a different technique. Location: Lake Ellyn Boathouse. Min/Max: 8/15. No class 10/10. (lb)

#/Link	Day	Date	Time	R/NR
<a href="#">126894</a>	M	9/19-10/17	3:45-5pm	\$60/\$70 ●

## Creatures of the Night

### Kids Day Off Program

Ages 5-12

Discover what makes coyotes, owls, bats, and spiders night creatures. We'll do hands-on explorations and a fun craft. Location: Churchill Park. Min/Max: 4/12. (lb)

#/Link	Day	Date	Time	R/NR
<a href="#">126617</a>	Tu	10/11	1:30-3pm	\$10/\$15 ●

## Monarchs, Milkweed, and Migration

### Kids Day Off Program

Ages 5-12

Spend the afternoon with us searching for monarch caterpillars and butterflies, playing games, and learning about this butterfly's life cycle. Location: Maryknoll Park. Min/Max: 4/20. (lb)

#/Link	Day	Date	Time	R/NR
<a href="#">126538</a>	F	9/9	1:30-3pm	\$10/\$15 ●

## Predator Patrol

### Kids Day Off Program

Ages 5-12

Cast a vote for your favorite predator in this program about food webs. Many mammals, reptiles, amphibians, birds, and insects are hunters. Predators are at the top of the food chain and play an important role in sustaining nature's balance. Explore the trails throughout the park in search of wild stalkers. Location: Churchill Park. Min/Max: 4/12. (lb)

#/Link	Day	Date	Time	R/NR
<a href="#">126620</a>	Tu	11/8	10-11:30am	\$10/\$15 ●

## Fabulous Fall

### Kids Day Off Program

Ages 5-12

Spend the afternoon with us discovering the science behind fall leaf color, playing leaf bingo, hiking, and more. Location: Churchill Park. Min/Max: 4/12. (lb)

#/Link	Day	Date	Time	R/NR
<a href="#">126621</a>	F	11/18	1:30-3pm	\$10/\$15 ●

## Winter Warm Up

### Kids Day Off Program

Ages 5-12

Start winter break off by getting outside for a walk through the woods. We will warm up by learning to build a fire, followed by s'mores to celebrate our success. Location: Churchill Park. Min/Max: 4/12. (lb)

#/Link	Day	Date	Time	R/NR
<a href="#">126626</a>	F	12/16	1:30-3pm	\$20/\$30 ●



# adult, aoa and senior interest

**who to contact:**

(bt) Brad Thomas, [bthomas@gepark.org](mailto:bthomas@gepark.org)

(dm) David MacDonald, [dmacdonald@gepark.org](mailto:dmacdonald@gepark.org)

(ks) Katy Speck, [kspeck@gepark.org](mailto:kspeck@gepark.org)





# adult interest

## Women's Self Defense

Ages 18 and up

This educational class will teach participants the basics of self-defense and how to protect yourself in a threatening situation. Our instructor, Master Raul, will go over how to assess a potentially dangerous environment and what to do to stay safe. Location: Ackerman SFC. Min/Max: 4/12. (bt)

#/Link	Day	Date	Time	R/NR
<a href="#">126741</a>	Sa	9/10-10/8	10-11am	\$75/\$95 •

## DUNHAM WOODS FARM

### Adult Horsemanship

Ages 18 and up

Join in the fun at Dunham Woods Farm with beginning riding lessons. You'll learn all about the proper ways to groom, tack, and handle horses. In the saddle you will learn the basics of riding at the walk and trot. Lessons will be held in our indoor arena during inclement weather. Riders should wear jeans or Jodhpur pants and hard soled riding or hiking boots with a small, low heel. Bring an approved riding helmet or bicycle helmet. Make up class held at the end of the six weeks. Location: Dunham Woods Farm. Min/Max: 1/4. No class 11/23. (dm)

#/Link	Day	Date	Time	R/NR
<a href="#">126877</a>	W	10/26-12/7	7-8pm	\$175/\$250 •

## Adult Beginner Tap

Ages 18 and up

Tap dance is an American art form that is not only entertaining to watch (and hear) but it's fun (and easy) to learn. Tap teaches rhythm, improves balance and provides a great workout. This class includes warm-ups, basic steps, and traveling combinations. Tap shoes are required and available for purchase through the Park District. For questions regarding shoe purchase, please email Katy Speck at [kspeck@gepark.org](mailto:kspeck@gepark.org). Location: Spring Avenue Recreation Center. Min/Max: 4/20. (ks)

#/Link	Day	Date	Time	R/NR
<a href="#">127017</a>	Tu	9/13-10/18	8-9pm	\$60/\$75 •
<a href="#">127018</a>	Tu	10/25-11/29	8-9pm	\$60/\$75 •

## Adult Beginner Ballet

Ages 18 and up

A perfect class for those getting started or revisiting ballet again as an adult. This class will focus on alignment, foundation of technique, and movement quality. Location: Spring Avenue Recreation Center. Min/Max: 4/20. No class 11/24. (ks)

#/Link	Day	Date	Time	R/NR
<a href="#">127015</a>	Th	9/15-10/20	7-7:45pm	\$60/\$75 •
<a href="#">127016</a>	Th	10/27-12/1	7-7:45pm	\$60/\$75 •

**DANCIN' FEET****West Coast Swing**

Ages 18 and up

West Coast Swing (WCS) is a very popular form of swing dancing that has spread across the world. Although its history and roots come from Lindy Hop, part of the appeal of WCS is that it is an adaptable dance; it can be danced to a variety of musical styles and genres. In addition, the dance itself creates room for improvisation and interaction between the partners like a conversation.

Location: Spring Avenue Recreation Center. Min/Max: 4/10. (ks)

#/Link	Day	Date	Time	R/NR
<a href="#">127019</a>	W	9/7-10/12	7-8pm	\$60/\$75 •
<a href="#">127020</a>	W	10/19-11/23	7-8pm	\$60/\$75 •

**DANCIN' FEET****Swing Dance**

Ages 18 and up

Swing dance, known also as Jitterbug and East Coast Swing, is a very popular and versatile dance. This class will teach you how to dance swing with ease and confidence. Basic lead and follow techniques will be covered in addition to many popular patterns. The class is open to couples, as well as singles. Location: Spring Avenue Recreation Center. Min/Max: 4/10. (ks)

#/Link	Day	Date	Time	R/NR
<a href="#">127021</a>	Th	9/8-10/13	6:30-7:30pm	\$60/\$75 •
<a href="#">127022</a>	Th	10/20-12/1	6:30-7:30pm	\$60/\$75 •

**DANCIN' FEET****Ballroom Dance**

Ages 18 and up

Learn the basics of Waltz and Foxtrot. Register with your favorite partner, or individually, for this enjoyable, fun, and energy packed dance session. You'll be ready to hit the dance floor in no time. Location: Spring Avenue Recreation Center. Min/Max: 4/10. (ks)

#/Link	Day	Date	Time	R/NR
<a href="#">127023</a>	Th	9/8-10/13	7:30-8:30pm	\$60/\$75 •
<a href="#">127024</a>	Th	10/20-12/1	7:30-8:30pm	\$60/\$75 •

**Seated Tai Chi**

Ages 18 and up

Clear-mindedness and better health come from the practice of Tai Chi. All ages can benefit from breath work, balancing both sides of the body, and improved upper body strength and flexibility. Taught by Yvonne Czarniak, a certified instructor in Tai Chi Chuan. Location: Wheaton Park District Mary Lubko Center. Min/Max: 1/3. No class 11/24. (dm)

#/Link	Day	Date	Time	R/NR
<a href="#">126880</a>	Th	9/15-10/20	10-11am	\$48/\$70 •
<a href="#">126881</a>	Th	11/3-12/15	10-11am	\$48/\$70 •

**Mindfulness Meditation**

Ages 18 and up

Train your mind the way you train your body for the perfect way to stay centered. Learn centuries-old meditation techniques and breathing exercises from Chopra Center certified instructor Stephanie Frantz to reduce anxiety and stress and increase your overall health and sense of well-being. Location: Main Street Recreation Center. Min/Max: 2/14. (dm)

#/Link	Day	Date	Time	R/NR
<a href="#">126879</a>	Th	10/20	7-7:50pm	\$35/\$45 •

**BFF DOG ACADEMY****General Obedience Class**

For dogs ages 6 months and up

Learn to read your dog and communicate positively by using the core obedience skills: focus/watch me, come when called, walk with a loose leash, sit, down, stay, and go to bed/lay down. The class will also address problem behaviors. Handler must be 18 years of age or older. Location: Main Street Recreation Center. Min/Max: 2/5. (dm)

#/Link	Day	Date	Time	R/NR
<b>Canceled</b>				



**BFF DOG ACADEMY**

**Puppy Class**

For puppies ages 8 weeks-6 months  
 Bond and learn how to communicate with your puppy. This is also an opportunity for your pup to socialize with other pups. You receive information about housetraining, grooming, chewing, jumping, and basic obedience. Core skills covered include come when called, walk with a loose leash, sit, down, and stay. AKC S.T.A.R. certification evaluation given during class. Fifteen minutes of puppy socialization time included. Handler must be 18 years of age or older. Location: Main Street Recreation Center. Min/Max: 2/6. (dm)

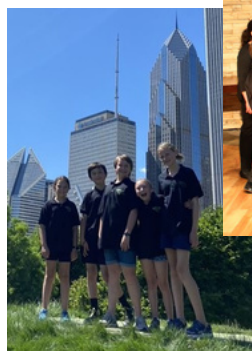
#/Link	Day	Date	Time	R/NR
<b>Canceled</b>				

**BFF DOG ACADEMY**

**Reactive Class**

For dogs ages 6 months and up  
 We will train your dog within a defined “safe space,” and help you determine if your dog is reactive or afraid by teaching you how to read your dog and communicate positively using the core obedience skills. The class will also address individual problem behaviors such as nipping or jumping. Note, this class is for dogs that are considered “reactive” not aggressive. Handler must be 18 years of age or older. Location: Main Street Recreation Center. Min/Max: 2/5. (dm)

#/Link	Day	Date	Time	R/NR
<b>Canceled</b>				



*Transforming young lives through excellence in music education and choral singing*

**Get in Touch**

Phone: 630-858-2471  
 Email: Sing@AnimaSingers.org



Rehearsals take place at the  
 Glen Ellyn Park District  
 Main Street Recreation Center.

**Sing with Us**

Sing with some of the finest professional musicians in Chicagoland!

Opportunities to perform locally, nationally, and internationally!

**Join**

Visit [animasingers.org](http://animasingers.org) to arrange a placement hearing\* & register. All are welcome!

- Touring Chorus \*
- Concert Chorus \*
- Treble & Treble Plus Chorus \*
- KidSingers (K - 1st Grade)

# active older adult & senior interest

## Holiday Luncheons

Ages 55 and up

Join us for a delicious meal, fun activities, and great company. Food will be provided by local restaurants. The meal will include snacks, main dish, drink, and desserts. Lunch will be served by noon followed by fun activities or entertainment for you to enjoy. Register in person or online. All luncheons are held at the Main Street Recreation Center. Min/Max: 10/40. (dm)

#/Link	Day	Date	Time	R/NR
<b>Trick-or-Treat</b>				
<a href="#">126862</a>	Tu	10/25	11:30am-1:30pm	\$10/\$12 ●
<b>Give Thanks</b>				
<a href="#">126863</a>	Tu	11/22	11:30am-1:30pm	\$10/\$12 ●
<b>Holiday Spirit</b>				
<a href="#">126864</a>	Tu	12/20	11:30am-1:30pm	\$10/\$12 ●

## Friday Night Senior Bingo

Ages 55 and up

Let's get together for bingo! Join us every Friday from 6-8pm at Ackerman Sports & Fitness Center for Senior Bingo. Enjoy several rounds of bingo while socializing with the community. Prizes will be awarded each night, including a grand prize at the end of the last game. No registration required. \$1 per card. (bt)

## Donuts and Bingo *Free!*

Ages 55 and up

Play bingo at Main Street Recreation Center on the 2nd Thursday of each month. Visit with friends over coffee and donuts while playing everyone's favorite game. Bingo will be free to play, and games will start at 10:30am. One bingo card per participant. Coffee, donuts, and bingo cards will be provided, and prizes will be awarded to winners. Offered in partnership with Glen Ellyn Public Library. Min/Max: 5/40. (dm)

## AARP Driver Safety

Ages 55 and up

Become a safer driver by sharpening your defensive driving skills. Our class combines discussion and text. Completion of this program entitles you to a reduction on your automobile insurance premium. Payment of \$20 for current AARP members and \$25 for non-members is payable to AARP at the first meeting (cash or check only). No refund after attending the first meeting. Location: Main Street Recreation Center. Min/Max: 5/25. (dm)

#/Link	Day	Date	Time	R/NR
<a href="#">126882</a>	W-Th	11/2-11/3	9am-1pm	See description ●

## ILLINOIS SECRETARY OF STATE

### Rules of the Road *Free!*

Ages 65 and up

The Rules of the Road Review Course is designed to give drivers – especially senior citizens and persons with disabilities – the knowledge and confidence needed to renew or obtain a driver's license. The review course combines an explanation of the driving exam with a practice written exam. Location: Main Street Recreation Center. Min/Max: 5/20. (dm)

#/Link	Day	Date	Time	R/NR
<a href="#">126878</a>	F	11/18	10am-12pm	Free w/registration ●

## The Gazette

Subscribe to receive The Gazette, a newsletter for seniors and active older adults, to your home! This FREE printed newsletter is mailed out quarterly to subscribers ages 60 and older. Please be sure to include your email address if you would also like to receive each edition via email.

Questions? Please contact David MacDonald at [dmacdonald@gepark.org](mailto:dmacdonald@gepark.org) or (630) 942-7266.



# MSRC Senior Clubs

Senior Clubs are moving to the Main Street Recreation Center (MSRC), 501 Hill Avenue, starting in September. The Senior Club offerings are programs for all those over the age of 60. Registration is required online or in-person to attend club meetings. (dm)

## Art Club

Art club will allow you to find out where unique talents lie and explore new avenues of enrichment and expression. The club will be led by an experienced local artist.

#/Link	Day	Date	Time	R/NR	
<a href="#">126865</a>	Tu	10/4	10:30am-12pm	\$7/\$10	●
<a href="#">126866</a>	Tu	12/13	10:30am-12pm	\$7/\$10	●

## Card Club *Free!*

Gather with other card game enthusiasts to play your favorite games or learn new ones. All levels of card players are welcome. New games played each week with all card decks being provided.

#/Link	Card Game	Day	Date	Time	
<a href="#">126444</a>	Bridge	W	9/14	9:30-11:30am	●
<a href="#">126445</a>	Pinochle	W	9/28	9:30-11:30am	●
<a href="#">126869</a>	Canasta	W	10/12	9:30-11:30am	●
<a href="#">126870</a>	Bridge	W	10/26	9:30-11:30am	●
<a href="#">126871</a>	Pinochle	W	11/9	9:30-11:30am	●
<a href="#">126872</a>	Canasta	W	11/23	9:30-11:30am	●

## Poker Club *Free!*

Put on your poker face and join us Wednesday afternoons for poker. Registration is ongoing.

#/Link	Day	Date	Time	
<a href="#">126875</a>	W	9/7-12/21	1-3pm	●

## Book Club *Free!*

Are you an avid reader and enjoy discussing the books you read? Join our monthly book club. Refreshments and snacks will be provided. Books can be checked out from the Glen Ellyn Public Library.

### *The Maid: A Novel by Nita Prose*

**Date:** Monday, September 19

**Time:** 10-11am

**#/Link:** [126437](#) ●

### *When We Were Vikings by Andrew David MacDonald*

**Date:** Monday, October 17

**Time:** 10-11am

**#/Link:** [126867](#) ●

### *The Revisioners by Margaret Wilkerson Sexton*

**Date:** Monday, November 21

**Time:** 10-11am

**#/Link:** [126868](#) ●

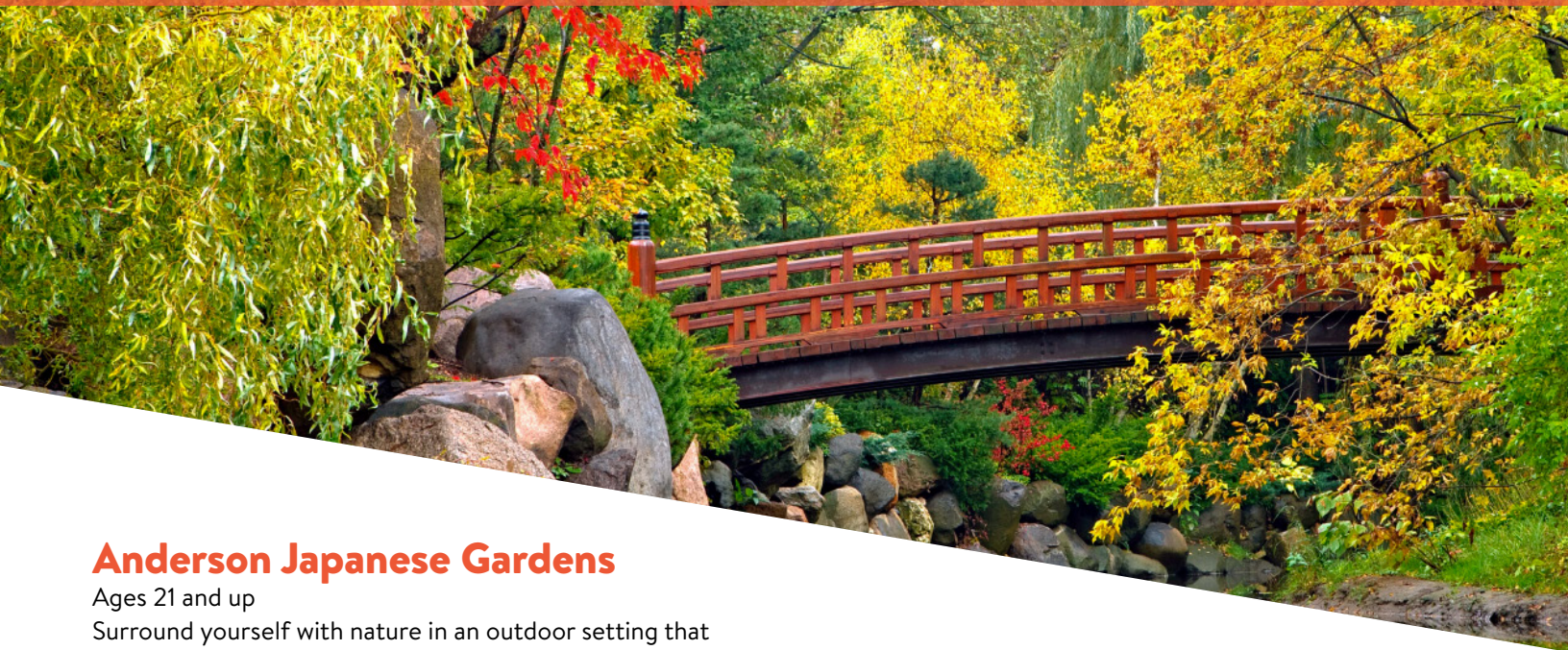
## Trivia and Social Club *Free!*

Each senior social club offers the opportunity to play games, learn something new, or even test your knowledge at themed trivia. Snacks and treats are served.

#/Link	Theme	Day	Date	Time	
<a href="#">126452</a>	Bear Down	Th	9/8	9:30-11:30am	●
<a href="#">126453</a>	Oktoberfest	Th	9/22	9:30-11:30am	●
<a href="#">126873</a>	Monster Mash	Th	10/20	9:30-11:30am	●
<a href="#">126874</a>	Give Thanks	Th	11/17	9:30-11:30am	●

# day trips

Photo credit: AndersonJapaneseGardens.org



## Anderson Japanese Gardens

Ages 21 and up

Surround yourself with nature in an outdoor setting that inspires the mind and energizes the soul. Upon arrival you'll enjoy an artisan boxed lunch prepared by Fresco at the Gardens. After lunch participants will enjoy a docent-guided tour along the beautifully manicured trails of the gardens. There will be time for a quick stop at the gift shop before heading home. Fee includes motor coach transportation, guided tour, and lunch buffet. Departs from the Elmhurst Park District. Min: 10/20. (dm)

### Register by 9/1

#/Link	Day	Date	Time	R/NR
<a href="#">126467</a>	F	9/16	10:30am-5pm	\$84/\$89 ●

## Police Tour & Talk *Free!*

Ages 50 and up

Attend an informative talk with Officer Joe Nemchock about current "scams" that are being seen throughout the area. This presentation will include different types of frauds including, but not limited to, IRS or electrical company phone scams, banking emails, and fictitious family emergency calls. Following the talk all participants will be taken on a tour of the Glen Ellyn Police Department. Location: Glen Ellyn Police Department. Min/Max: 4/14. (dm)

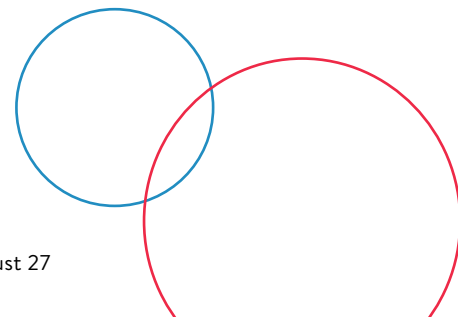
#/Link	Day	Date	Time	R/NR
<a href="#">126889</a>	Tu	10/18	9:45-11:30am	Free w/registration ●

## Glen Ellyn Cruisin' Crew

Ages 55 and up

Join us as we venture out to different restaurants and new locations each month to enjoy time together. This is a great chance to socialize and meet new people in the area. Take a ride on the bus for just \$5. Participants are responsible for all costs at the different locations. Registration is required for all attendees. Bus will depart from Main Street Recreation Center. Min/Max: 4/14. (dm)

#/Link	Location	Day	Date	Time
<a href="#">126427</a>	Raymes (Lisle)	W	9/21	11:30am-3pm ●
<a href="#">126887</a>	Olde Salem Café (Hanover Park)	W	10/19	11:30am-3pm ●
<a href="#">126888</a>	Q-BBQ (La Grange)	W	11/16	11:30am-3pm ●





## Chicago Pizza Tour

Ages 21 and up

We'll be stopping at three pizza places around Chicago on this educational and tasty tour. Our first stop will be Pizano's in the Loop. Next is Labriola on the Magnificent Mile for deep dish pan style pizza. Our last stop is Flo & Santo's in the South Loop for thin crust tavern style pizza and dessert. Flo's will serve up s'mores pizzas for dessert. Fee includes transportation, guide, pizza and a soft drink at each stop, and dessert. Departs from Maryknoll Park. Min/Max: 8/15. (dm)

### Register by 9/12

#/Link	Day	Date	Time	R/NR
<a href="#">126466</a>	W	9/28	9:15am-4:15pm	\$84/\$89 ●

## Dreamgirls at Paramount Theatre

Ages 21 and up

It's the 1960s where the sound of Motown is on the rise. Meet the Dreamettes – Effie, Deena and Lorrell – three women trying to break their way onto the music scene. When car salesman Curtis Taylor Jr. signs the three singers to a record label, he sets in motion a series of events that will forever change their lives, for better and for worse. Join the Dreamgirls as they navigate the highs and lows of life, love, and fame. Fee includes transportation and main floor seating at The Paramount Theatre in Aurora. Departs from Maryknoll Park. Min/Max: 5/7. (dm)

### Register by 9/9

#/Link	Day	Date	Time	R/NR
<a href="#">126463</a>	W	10/5	12:30-4:30pm	\$49/\$54 ●

## Four Winds Casino

Ages 21 and up

Join us as we head to the Four Winds Casino in New Buffalo, Michigan. It has 3,000 of the most sought-after slots ranging in denominations from 1 cent to \$100. Fee includes motor coach transportation, \$10 food credit which can be used toward food purchases, and \$15 instant slot credit. Be sure to bring a valid (non-expired) driver's license or state ID card with you on the day of the trip. If you have a player's card, please call to include the number with your registration. Departs from Elmhurst Park District. Min/Max: 10/20. (dm)

### Register by 9/27

#/Link	Day	Date	Time	R/NR
<a href="#">126465</a>	Tu	10/25	8:15am-5pm	\$49/\$54 ●

## The Sound of Music at Paramount Theatre

Ages 21 and up

When carefree nun-in-training Maria is sent by her convent to be the governess of seven children, she finds herself unexpectedly questioning her choices in life and falling in love with the children's stern father, all the while the events of World War II play out in the background. One of the most beloved musicals of all time and a holiday favorite, The Sound of Music has enchanted audiences for more than 50 years. Experience it for the first time or all over again at Paramount Theatre, where the lobby will be decked out in holiday decorations, including a two-story Christmas tree. Fee includes transportation and main floor seating. Departs from Maryknoll Park. Min/Max: 5/7. (dm)

### Register by 11/4

#/Link	Day	Date	Time	R/NR
<a href="#">126464</a>	W	11/30	12:30-4:30pm	\$49/\$54 ●

## Christmas Bakery Bus

Ages 21 and up

We're heading to Milwaukee to visit various bakeries and shops. En route to each location, our guide will share the history of Christmas holiday traditions of the Polish, Germans, Italians, Irish, Danish, and more. At each bakery stop you'll receive one bakery item, samples, and time to shop. Bring along a bag to collect your holiday goodies. Lunch will be enjoyed at Mader's consisting of your choice from a special lunch menu. The trip will involve getting on and off the bus multiple times and there will be steps at some of the locations. Fee includes transportation, samples, and lunch. Departs from Maryknoll Park. Min/Max: 10/15. (dm)

### Register by 11/21

#/Link	Day	Date	Time	R/NR
<a href="#">126890</a>	W	12/7	8:30am-6pm	\$134/\$154 ●





## Oaktoberfest *Free!*

All ages

Celebrate Illinois oaks! Learn about these stately trees while enjoying family-friendly activities such as writing a love letter to a tree, taking a guided nature walk, attempting an acorn obstacle course, playing leaf bingo, and working on a tree art project. Two Hound Red will have an “Oaktoberfest” beer available for purchase. Attendees will also be able to try out platform tennis (first come, first serve; equipment and brief instruction included). Children must be accompanied by an adult. Co-hosted by Go Green Glen Ellyn. (1b)

**Date:** Saturday, October 8

**Time:** 1-4pm

**Location:** Maryknoll Park

**R/NR:** Free

## Pumpkin Smash *Free!*

All ages

Do not trash your pumpkins, smash them! Bring your jack-o-lanterns for composting at Village Green Park. Drop and go or take the opportunity to smash and chop your pumpkin. It will add nutrients to our community garden soil while keeping pumpkins out of the landfill. Please no painted pumpkins. All decorations and candles must be removed. If you stay to smash and wish to use tools, please bring a baseball bat or shovel. No registration required. (1b)

**Date:** Saturday, November 5

**Time:** 9-11am

**Location:** Village Green Park

**R/NR:** Free



## Preschool Nature Outings

Ages 2-5 with adult

Explore nature this fall. Each class will feature a different topic supported by a story, craft/project, and an easy exploratory hike. Min/Max: 4/12. (1b)

#/Link	Day	Date	Time	R/NR
<b>Seeds and Fruit at Ackerman Park</b>				
<a href="#">126324</a>	F	9/16	10-11am	\$10/\$15 ●
<b>Owls at Lake Ellyn</b>				
<a href="#">126321</a>	F	9/30	10-11am	\$10/\$15 ●
<b>Fall Leaves at Churchill Park</b>				
<a href="#">126606</a>	F	10/14	10-11am	\$10/\$15 ●
<b>Preparing for Winter at Churchill Park</b>				
<a href="#">126607</a>	F	11/4	10-11am	\$10/\$15 ●
<b>Nature Thank You at Ackerman Park</b>				
<a href="#">126608</a>	F	11/18	10-11am	\$10/\$15 ●
<b>Gingerbread Animals at Ackerman Park</b>				
<a href="#">126609</a>	F	12/16	10-11am	\$10/\$15 ●

## Kindergarten Nature Play

Ages 5-6

Enhance your kindergartener's learning experience with Waldkindergarten, also known as Forest Kindergarten. Originating in Germany, this practice of supervised child-directed nature play allows young students to spend their days outside, free from the classroom and technology. Participants should bring a water bottle and lunch, and dress appropriately for the weather. Play time will take place rain or shine but may be canceled for heavy rain or snow. Transportation is not provided. Location: Churchill Park. Min/Max: 4/8. (1b)

#/Link	Day	Date	Time	R/NR
<b>For A.M. Kindergarten Students</b>				
<i>Lunch at Churchill Park first, then play</i>				
<a href="#">126611</a>	W	9/14-9/28	11:45am-1:15pm	\$45/\$60 ●
<a href="#">126613</a>	W	10/12-10/26	11:45am-1:15pm	\$45/\$60 ●
<b>For P.M. Kindergarten Students</b>				
<i>Play first, then eat lunch before school</i>				
<a href="#">126610</a>	W	9/14-9/28	10:45am-12:15pm	\$45/\$60 ●
<a href="#">126612</a>	W	10/12-10/26	10:45am-12:15pm	\$45/\$60 ●



## Monarchs, Milkweed, and Migration

### Kids Day Off Program

Ages 5-12

Spend the afternoon with us searching for monarch caterpillars and butterflies, playing games, and learning about this butterfly's life cycle. Location: Maryknoll Park. Min/Max: 4/20. (1b)

#/Link	Day	Date	Time	R/NR
<a href="#">126538</a>	F	9/9	1:30-3pm	\$10/\$15 ●

## Parks for Pollinators BioBlitz

### Citizen Science Opportunity

Ages 8 and up

Challenge your friends or siblings! Who can document the most pollinators? During a BioBlitz, community members, students, teachers, and scientists try to find as many organisms as they can at a particular place during a short period of time. These records give a picture of that area's biodiversity. Join the National Recreation and Parks Association's national campaign to advance pollinator health and native habitat. Learn what's happening to pollinators. Learn how native habitats support insect life. Participate in the BioBlitz in our park, using iNaturalist on your phone. Please register only one person per family/group. Location: Churchill Park. Min/Max: 4/20. (1b)

#/Link	Day	Date	Time	R/NR
<a href="#">126339</a>	Sa	9/17	1:30-2:30pm	\$10/\$20 ●



## The Art of Nature Journaling with Liita Forsyth

Ages 7-14

Spend Mondays after school with Liita Forsyth – artist, naturalist, teacher, and proprietor of The Little Bits Workshop. Students will learn how to make a hand bound journal. Time will be spent observing nature firsthand at Lake Ellyn. Students will come inside the Boathouse for art class, drawing and painting what they saw. Each week they will learn a different technique. Location: Lake Ellyn Boathouse. Min/Max: 8/15. No class 10/10. (lb)

#/Link	Day	Date	Time	R/NR
<a href="#">126894</a>	M	9/19-10/17	3:45-5pm	\$60/\$70 •

## Creatures of the Night

### Kids Day Off Program

Ages 5-12

Discover what makes coyotes, owls, bats, and spiders night creatures. We'll do hands-on explorations and a fun craft. Location: Churchill Park. Min/Max: 4/12. (lb)

#/Link	Day	Date	Time	R/NR
<a href="#">126617</a>	Tu	10/11	1:30-3pm	\$10/\$15 •

## Ghost Hunt

All ages

Join us at sunset to search for hidden ghosts throughout Churchill Park. Successfully find them and answer a few nature trivia questions to win a Halloween goody bag. Please park at Churchill School (250 Geneva Road) and meet at the picnic tables near the gymnasium. Bring a flashlight. This is a non-scary event. Fee is per child. Adult accompaniment is required, as this is self-guided. Location: Churchill Park. Min/Max: 10/70. (lb)

#/Link	Day	Date	Time	R/NR
<a href="#">126618</a>	Sa	10/22	6-7pm	\$10/\$15 •

## Forest Fitness Hike

Ages 8 and up

Walk four miles at a brisk pace on trails and through natural areas. Children must be accompanied by an adult. Location: Ackerman Park. Min/Max: 4/20. (lb)

#/Link	Day	Date	Time	R/NR
<a href="#">126619</a>	Sa	11/5	1-2:30pm	Free w/registration •

## Predator Patrol

### Kids Day Off Program

Ages 5-12

Cast a vote for your favorite predator in this program about food webs. Many mammals, reptiles, amphibians, birds, and insects are hunters. Predators are at the top of the food chain and play an important role in sustaining nature's balance. Explore the trails throughout the park in search of wild stalkers. Location: Churchill Park. Min/Max: 4/12. (lb)

#/Link	Day	Date	Time	R/NR
<a href="#">126620</a>	Tu	11/8	10-11:30am	\$10/\$15 •

## Fabulous Fall

### Kids Day Off Program

Ages 5-12

Spend the afternoon with us discovering the science behind fall leaf color, playing leaf bingo, hiking, and more. Location: Churchill Park. Min/Max: 4/12. (lb)

#/Link	Day	Date	Time	R/NR
<a href="#">126621</a>	F	11/18	1:30-3pm	\$10/\$15 •

## Hibernation Hideaways

Ages 5-12

Learn how wildlife survives the cold weather. Explore the woods and create a model of an animal's winter home. Location: Ackerman Sports and Fitness Center. Min/Max: 4/12. (lb)

#/Link	Day	Date	Time	R/NR
<a href="#">126622</a>	Sa	11/19	1:30-3pm	\$10/\$15 •



## Thanksgiving Centerpiece

Ages 8 and up

Collect natural materials with us and use them to create a centerpiece for a holiday meal. Location: Spring Avenue Recreation Center. Min/Max: 4/12. (1b)

#/Link	Day	Date	Time	R/NR
<a href="#">126623</a>	Tu	11/22	10-11:30am	\$20/\$25 •

## Green Gift Wrap

Ages 12 and up

Bring your ideas about how to reduce, reuse, and recycle during the holiday season. Each registrant will receive a reusable traditional Japanese wrapping and learn to use it. Location: Spring Avenue Recreation Center. Min/Max: 4/12. (1b)

#/Link	Day	Date	Time	R/NR
<a href="#">126624</a>	W	11/30	6:30-7:30pm	\$20/\$25 •

## Felt Owl Ornament

Ages 5 and up

Learn about local owls, and hand sew a stuffed felt ornament. Beginners welcome. Location: Spring Avenue Recreation Center. Min/Max: 4/12. (1b)

#/Link	Day	Date	Time	R/NR
<a href="#">126625</a>	Sa	12/3	10-11:30am	\$20/\$25 •

## Winter Warm Up

### Kids Day Off Program

Ages 5-12

Start winter break off by getting outside for a walk through the woods. We will warm up by learning to build a fire, followed by s'mores to celebrate our success. Location: Churchill Park. Min/Max: 4/12. (1b)

#/Link	Day	Date	Time	R/NR
<a href="#">126626</a>	F	12/16	1:30-3pm	\$20/\$30 •

# Glen Ellyn Native Tree & Shrub Sale

Looking to add a tree or shrub to your yard?

Native trees and shrubs are available to preorder through the Glen Ellyn Native Tree and Shrub Sale.

By using native plants at home, we turn our neighborhoods into extensions of local wild spaces.

These plants add beauty and shade to yards and make them havens for wildlife. Fall is a great time to plant so roots can get established before winter's cold weather. Open to residents and nonresidents, the sale is presented by Glen Ellyn Park District, The Conservation Foundation, and the Glen Ellyn Environmental Commission. (cg)

**This is a preorder sale.**  
**The deadline to order is:**  
Friday, September 16 at 12pm

Order pickup:  
Saturday, October 1, 9-11am, Sunset Park

Order now: [TheConservationFoundation.org](https://TheConservationFoundation.org)



## Migration Mornings *Free!*

Ages 18 and up

During fall migration, thousands of birds pass through our area on their journey south. With many of these birds traveling to South and Central America from Canada, they rely on patches of natural areas – big and small – to rest and refuel. Take a casual walk with us to catch a glimpse of these often-beautiful birds and learn why they are so amazing. A limited quantity of binoculars will be available for loan.

Min/Max: 4/12. (cg)

### September 8

**Location:** Manor Park

**Time:** 8:30-10am

**R/NR:** Free w/registration

**#/Link:** [126331](#) ●

### September 15

**Location:** Ackerman Park

**Time:** 8:30-10am

**R/NR:** Free w/registration

**#/Link:** [126332](#) ●

### September 22

**Location:** Lake Ellyn Park

**Time:** 8:30-10am

**R/NR:** Free w/registration

**#/Link:** [126333](#) ●

### September 29

**Location:** Manor Park

**Time:** 8:30-10am

**R/NR:** Free w/registration

**#/Link:** [126334](#) ●

### October 6

**Location:** Ackerman Park

**Time:** 8:30-10am

**R/NR:** Free w/registration

**#/Link:** [126336](#) ●

### October 13

**Location:** Churchill Park

**Time:** 8:30-10am

**R/NR:** Free w/registration

**#/Link:** [126375](#) ●



## Nature Walking Club *Free!*

Ages 18 and up

Bring your sense of adventure and wonder as we explore our natural heritage on local trails. These casual walks will highlight seasonal happenings and are held rain or shine.

Min/Max: 4/12. (lb)

### Ponds and Wetlands at Panfish Park

**Date:** Friday, September 9

**Time:** 9-10:30am

**R/NR:** Free w/registration

**#/Link:** [126330](#) ●

### Fall Color at Churchill Park

**Date:** Friday, October 7

**Time:** 9-10am

**R/NR:** Free w/registration

**#/Link:** [126614](#) ●

### Guided Exhibit Hike at Willowbrook Wildlife Center

**Date:** Friday, November 11

**Time:** 9-10:30am

**R/NR:** \$5

**#/Link:** [126615](#) ●

### Winter Walk at Lambert Lake

**Date:** Friday, December 9

**Time:** 9-10am

**R/NR:** Free w/registration

**#/Link:** [126616](#) ●

## Restoration Workdays *Free!*

### Volunteer Opportunity

Ages 8 and up

Help clear invasive plants, cut and stack brush, plant native flowers, trees, and seeds, maintain trails, and more. Please bring your own work gloves and water bottle. Contact Laurie at [lbellmar@gepark.org](mailto:lbellmar@gepark.org) if you have questions. (lb)

### September 17

**Location:** Manor Park

**Time:** 9-11am

**R/NR:** Free w/registration

**#/Link:** [126381](#) ●

### October 15

**Location:** Churchill Park

**Time:** 9-11am

**R/NR:** Free w/registration

**#/Link:** [126891](#) ●

### November 19

**Location:** Ackerman Woods

**Time:** 9-11am

**R/NR:** Free w/registration

**#/Link:** [126892](#) ●

### December 17

**Location:** Churchill Park

**Time:** 9-11am

**R/NR:** Free w/registration

**#/Link:** [126893](#) ●



# Spring Avenue Dog Park

WHERE PETS COME TO PLAY.

Unleash some fun at this popular outdoor park where dogs can exercise, play, and socialize off-leash. Your four-legged friend will pawsitively love it.

Starting at  
**\$35**  
for residents

MEMBERSHIP OPTIONS & MORE »

## GLEN ELLYN POLAR PLAZA Downtown Pop-Up Skating Rink



Look for details about the 2022-2023 Polar Plaza season in the Winter 2023 Playbook which will be released November 29.







# sports

## who to contact:

(bt) Brad Thomas, [bthomas@gepark.org](mailto:bthomas@gepark.org)

(cb) Clint Babicz, [cbabicz@gepark.org](mailto:cbabicz@gepark.org)

(dm) David MacDonald, [dmacdonald@gepark.org](mailto:dmacdonald@gepark.org)

(gm) Graham McQueen, [gmcqueen@gepark.org](mailto:gmcqueen@gepark.org)





# early childhood sports

## ALL STAR SPORTS

### Adult/Tot Super Sports Jr.

Ages 2-3 with adult

Enjoy this opportunity to bond and have fun together while learning a variety of sports. Adult/Tot Sports offers a great opportunity to improve the simple motor skills of catching, throwing, batting, shooting, passing, and running, and also improves hand-eye coordination. Adults participate with their child playing soccer, basketball, hockey, T-Ball, and other sports. Equipment is provided. Location: Main Street Recreation Center. Min/Max: 5/16. No class 11/22-11/26. (dm)

#/Link	Day	Date	Time	R/NR
<a href="#">126809</a>	W	10/26-12/21	9:15-10am	\$112/\$168 ●
<a href="#">126810</a>	Sa	10/29-12/17	9:15-10am	\$112/\$168 ●

### Ackerman Adult and Tot Sports

Ages 3-5 with adult

Adults play an integral part in helping their tots develop basic sports movement and motor skills. Motor skills activities focus on hand-eye and hand-foot coordination. Sports equipment and instruction are provided to help guide your child through an introduction to organized sports. Adult participation is required. Location: Ackerman SFC. Min/Max: 5/25. (bt)

#/Link	Day	Date	Time	R/NR
<a href="#">126653</a>	Th	10/6-10/27	9-9:45am	\$40/\$55 ●
<a href="#">126654</a>	Sa	10/8-10/29	9-9:45am	\$40/\$55 ●
<a href="#">126655</a>	Th	11/3-11/17	9-9:45am	\$30/\$45 ●
<a href="#">126656</a>	Sa	11/5-11/19	9-9:45am	\$30/\$45 ●
<a href="#">126657</a>	Th	12/1-12/22	9-9:45am	\$40/\$55 ●

## Ackerman Sports and More

Ages 3-6

Children are introduced to the fundamentals of different sports such as basketball, soccer, flag football, kickball, and other group games and activities. This is the first step in learning the core skills, rules, and team tactics for each sport. Classes focus on both skill work and game play each week. Location: Ackerman SFC. Min/Max: 5/25. (bt)

#/Link	Day	Date	Time	R/NR
<a href="#">126665</a>	Th	9/8-9/29	11-11:45am	\$40/\$55 ●
<a href="#">126666</a>	Th	10/6-10/27	11-11:45am	\$40/\$55 ●
<a href="#">126667</a>	Th	11/3-11/17	11-11:45am	\$30/\$45 ●
<a href="#">126668</a>	Th	12/1-12/22	11-11:45am	\$40/\$55 ●

## ALL STAR SPORTS

### Super Sports

Ages 3-7

Designed for the child who wants to “take a shot” at different sports. Kids stay active and work on balance, motor skills and hand-eye coordination while learning the rules of baseball, football, floor hockey, soccer, basketball and more. Each class focuses on a new sport, basic rules, and mechanics while games are played that keep everyone moving. There’s no reason to pick a sport when they can play them all. Equipment is provided. Location: Main Street Recreation Center. Min/Max: 5/16. No class 11/22-11/26. (dm)

#/Link	Day	Date	Time	R/NR
<b>Ages 3-4</b>				
<a href="#">126116</a>	Th	8/25-10/13	10-10:45am	\$112/\$168 ●
<a href="#">126119</a>	F	8/26-10/14	2-2:45pm	\$112/\$168 ●
<a href="#">126811</a>	Tu	10/25-12/20	3:45-4:30pm	\$112/\$168 ●
<a href="#">126813</a>	Th	10/27-12/15	10-10:45am	\$102/\$158 ●
<a href="#">126816</a>	F	10/28-12/16	2:15-3pm	\$102/\$158 ●
<b>Ages 4-6</b>				
<a href="#">126117</a>	Th	8/25-10/13	10:45-11:45am	\$112/\$168 ●
<a href="#">126118</a>	F	8/26-10/14	1-2pm	\$112/\$168 ●
<a href="#">126812</a>	Tu	10/25-12/20	4:30-5:30pm	\$112/\$168 ●
<a href="#">126814</a>	Th	10/27-12/15	10:45-11:45am	\$102/\$158 ●
<a href="#">126815</a>	F	10/28-12/16	1:15-2:15pm	\$102/\$158 ●





## ALL STAR SPORTS

**Basketball Jr. & Basketball Skills**

Ages 3-10

Designed to teach the game of basketball at a basic level while making sure the players stay active and engaged. Fun, basketball-like games will be played to teach the importance of each skill. Trainers focus on basic mechanics to build confidence then add larger challenges as players progress. We will work on dribbling with each hand, passing and shooting technique, and understanding basic offense and defense. All three levels of Basketball Skills are the next level of Junior program. Prior attendance in Basketball Jr. and Basketball Skills encouraged prior to attending Basketball Skills 2 and 3. Location: Main Street Recreation Center. Min/Max: 5/16. No class 11/22-11/26. (dm)

#/Link	Age	Day	Date	Time	R/NR
<b>Basketball Jr.</b>					
<a href="#">126124</a>	3-4	Tu	8/30-10/18	9:15-10am	\$112/\$168 ●
<a href="#">126125</a>	4-6	Tu	8/30-10/18	10-11am	\$112/\$168 ●
<a href="#">126126</a>	3-5	F	8/26-10/14	9:15-10am	\$112/\$168 ●
<a href="#">126817</a>	3-4	Tu	10/25-12/20	9:15-10am	\$112/\$168 ●
<a href="#">126818</a>	4-6	Tu	10/25-12/20	10-11am	\$112/\$168 ●
<a href="#">126819</a>	4-5	W	10/26-12/21	4-4:45pm	\$112/\$168 ●
<a href="#">126820</a>	3-5	F	10/28-12/16	9:15-10am	\$102/\$158 ●
<a href="#">126821</a>	4-6	F	10/28-12/16	10-11am	\$102/\$158 ●
<b>Basketball Skills</b>					
<a href="#">126130</a>	7-10	W	8/31-10/19	6-7pm	\$112/\$168 ●
<a href="#">126129</a>	5-7	F	8/26-10/14	10-11am	\$112/\$168 ●
<a href="#">126822</a>	5-7	Th	10/27-12/15	5-6pm	\$102/\$158 ●
<b>Basketball 2 Skills</b>					
<a href="#">126823</a>	6-7	W	10/26-12/21	4:45-5:45pm	\$112/\$168 ●
<a href="#">126824</a>	7-10	Th	10/27-12/15	6-7pm	\$102/\$158 ●
<b>Basketball 3 Skills</b>					
<a href="#">126825</a>	8-10	W	10/26-12/21	5:45-6:45pm	\$112/\$168 ●

## ALL STAR SPORTS

**Floor Hockey Jr.**

Ages 4-7

Learn the game before the skates go on. Players will learn the proper mechanics of stick handling, puck control, passing, and shooting. Offensive and defensive strategies will also be covered. Participants must bring a bike helmet and gloves. Shin, knee, and elbow pads are optional. Location: Main Street Recreation Center. Min/Max: 5/16. No class 11/22-11/26. (dm)

#/Link	Age	Day	Date	Time	R/NR
<a href="#">126142</a>	4-5	W	8/31-10/19	4-4:45pm	\$112/\$168 ●
<a href="#">126143</a>	6-7	W	8/31-10/19	4:45-5:45pm	\$112/\$168 ●
<a href="#">126826</a>	5-7	Tu	10/25-12/20	5:30-6:30pm	\$112/\$168 ●
<a href="#">126827</a>	4-5	Th	10/27-12/15	3:15-4pm	\$102/\$158 ●
<a href="#">126828</a>	5-7	Th	10/27-12/15	4-5pm	\$102/\$158 ●

## ALL STAR SPORTS

**Golf**

Ages 4-7

We introduce children to golf through fun drills and games that help them learn the complicated golf swing, rules, and proper etiquette. Clubs provided (or you may bring your own). Location: Main Street Recreation Center. Min/Max: 5/16. (dm)

#/Link	Age	Day	Date	Time	R/NR
<a href="#">126153</a>	4-5	Th	8/25-10/13	3-3:45pm	\$112/\$168 ●
<a href="#">126154</a>	5-7	Th	8/25-10/13	3:45-4:30pm	\$112/\$168 ●



## ALL STAR SPORTS

## Soccer Jr.

Ages 3-7

There's no sitting and waiting in the action-packed game of soccer! The game is taught by hiding drills in fun games and using association techniques on the players' levels. Simple foot skills, dribbling, passing, shooting, basic rules and even work on spreading the field are covered. Kids also learn teamwork and sportsmanship. Equipment is provided. Location: Main Street Recreation Center. Min/Max: 5/16. No class 11/22-11/26. (dm)

#/Link	Day	Date	Time	R/NR
<b>Ages 3-4</b>				
<a href="#">126144</a>	Tu	8/30-10/18	4:45-5:30pm	\$112/\$168 ●
<a href="#">126146</a>	Th	8/25-10/13	11:45am-12:30pm	\$112/\$168 ●
<a href="#">126157</a>	Sa	8/27-10/15	10-10:45am	\$112/\$168 ●
<a href="#">126829</a>	Tu	10/25-12/20	11-11:45am	\$112/\$168 ●
<a href="#">126831</a>	Th	10/27-12/15	11:45am-12:30pm	\$102/\$158 ●
<a href="#">126832</a>	Sa	10/29-12/17	10:45-11:30am	\$102/\$158 ●
<b>Ages 3-5</b>				
<a href="#">126147</a>	Th	8/25-10/13	4:30-5:15pm	\$112/\$168 ●
<b>Ages 4-6</b>				
<a href="#">126830</a>	Tu	10/25-12/20	11:45am-12:45pm	\$112/\$168 ●
<a href="#">126833</a>	Sa	10/29-12/17	11:30am-12:30pm	\$102/\$158 ●
<b>Ages 5-7</b>				
<a href="#">126145</a>	Tu	8/30-10/18	5:30-6:30pm	\$112/\$168 ●
<a href="#">126148</a>	Th	8/25-10/13	5:15-6:15pm	\$112/\$168 ●

## FUTURE PROS

## Adult/Tot Lakers Soccer

Ages 2-3 with adult

This program provides the opportunity for you and your child to play soccer together. This class will work on simple motor skills such as dribbling, passing, and shooting. Adults participate with their child. Each participant receives a soccer ball. Location: Ackerman SFC. Min/Max: 8/20. (bt)

#/Link	Day	Date	Time	R/NR
<a href="#">126669</a>	F	9/9-10/28	9:30-10:15am	\$110/\$160 ●

## FUTURE PROS

## Little Lakers Soccer

Ages 4-6

Introduce your little one to the world's most popular sport. Your child will learn not only basic skills, but also a lifetime love for soccer. Each participant receives a soccer ball. Location: Ackerman SFC. Min/Max: 8/20. (bt)

#/Link	Day	Date	Time	R/NR
<a href="#">126670</a>	F	9/9-10/28	10:30-11:15am	\$110/\$160 ●

## Adult/Tot Hockey

Ages 3-4 with adult

Adults and tots, ages 3-4, are on the ice together. Both must wear skates. This class teaches ice coordination, balance, and agility in a fun atmosphere. Location: Center Ice of DuPage. Min/Max: 1/20. No class 11/3-11/5 or 11/24-11/26. (dm)

#/Link	Day	Date	Time	R/NR
<a href="#">126798</a>	Sa	10/22-12/17	9:10-9:40am	\$165 ●

## Little Hockey 1

Ages 3-5

For participants who have had no formal instruction. Kids will learn ice coordination, balance, and agility in a fun atmosphere while wearing hockey equipment. Hockey skates and helmet required. Hockey stick is optional. Location: Center Ice of DuPage. Min/Max: 1/20. No class 11/3-11/5 or 11/24-11/26. (dm)

#/Link	Day	Date	Time	R/NR
<a href="#">126807</a>	Th	10/20-12/15	4:30-5pm	\$155 ●
<a href="#">126808</a>	Sa	10/22-12/17	9:10-9:40am	\$155 ●





## ALL STAR SPORTS

### T-Ball Jr.

Ages 3-7

T-Ball can be a boring game if taught incorrectly.

This approach to baseball is one that engages players regardless of skill level. They learn basic building blocks in a fun, safe environment. Program keeps players moving and learning even while in the dugout! Mechanics and hand eye coordination are the keys to early success. Players gain confidence as they learn the proper mechanics of catching, throwing, fielding, base running, and batting. Participants must bring their own glove. Location: Main Street Recreation Center. Min/Max: 5/16. No class 11/22-11/26. (dm)

#/Link	Day	Date	Time	R/NR
<b>Ages 3-4</b>				
<a href="#">126131</a>	Tu	8/30-10/18	3-3:45pm	\$112/\$168 ●
<a href="#">126133</a>	W	8/31-10/19	10-10:45am	\$112/\$168 ●
<a href="#">126135</a>	F	8/26-10/14	2:45-3:30pm	\$112/\$168 ●
<a href="#">126136</a>	Sa	8/27-10/15	10:45-11:30am	\$112/\$168 ●
<a href="#">126834</a>	W	10/26-12/21	10-10:45am	\$112/\$168 ●
<a href="#">126835</a>	W	10/26-12/21	11-11:45am	\$112/\$168 ●
<a href="#">126836</a>	F	10/28-12/16	3-3:45pm	\$102/\$158 ●
<a href="#">126837</a>	Sa	10/29-12/17	10-10:45am	\$102/\$158 ●
<b>Ages 4-6</b>				
<a href="#">126134</a>	W	8/31-10/19	10:45-11:45am	\$112/\$168 ●
<a href="#">126137</a>	Sa	8/27-10/15	11:30am-12:30pm	\$112/\$168 ●
<b>Ages 5-7</b>				
<a href="#">126132</a>	Tu	8/30-10/18	3:45-4:45pm	\$112/\$168 ●

### Ackerman Tot T-Ball

Ages 3-6

This class will introduce baseball fundamentals and game play including batting, catching, throwing, and base running and will include the principals of good sportsmanship in a non-competitive and fun atmosphere. Location: Ackerman SFC. Min/Max: 5/25. (bt)

#/Link	Day	Date	Time	R/NR
<a href="#">126658</a>	Th	9/8-9/29	10-10:45am	\$40/\$55 ●
<a href="#">126659</a>	Sa	9/10-9/24	11:15am-12pm	\$30/\$45 ●
<a href="#">126660</a>	Th	10/6-10/27	10-10:45am	\$40/\$55 ●
<a href="#">126661</a>	Sa	10/8-10/29	11:15am-12pm	\$40/\$55 ●
<a href="#">126662</a>	Th	11/3-11/17	10-10:45am	\$30/\$45 ●
<a href="#">126663</a>	Sa	11/5-11/19	11:15am-12pm	\$30/\$45 ●
<a href="#">126664</a>	Th	12/1-12/22	10-10:45am	\$40/\$55 ●

## Adult/Tot Ice Skating

Ages 3-4 with adult

Adults and tots are on the ice together. Both must wear skates. This class teaches ice coordination, balance, and agility in a fun atmosphere. Location: Center Ice of DuPage. Min/Max: 1/20. No class 9/7-9/10, 11/3-11/5 or 11/24-11/26. (dm)

#/Link	Day	Date	Time	R/NR
<a href="#">126794</a>	Th	10/20-12/15	4:30-5pm	\$165 ●
<a href="#">126795</a>	Sa	10/22-12/17	10-10:30am	\$165 ●
<a href="#">126796</a>	Sa	10/22-12/17	11-11:30am	\$165 ●

## Ice Skating Tot 1

Ages 4-5

This class teaches progressive levels 1 to 4 providing children ages 4-5 with ice orientation, balance, agility, and fun. Skate rentals are available. Location: Center Ice of DuPage. Min/Max: 1/20. No class 9/7- 9/10, 11/3-11/5 or 11/24-11/26. (dm)

#/Link	Day	Date	Time	R/NR
<a href="#">126802</a>	Th	10/20-12/15	4:30-5pm	\$155 ●
<a href="#">126803</a>	Sa	10/22-12/17	10-10:30am	\$155 ●
<a href="#">126804</a>	Sa	10/22-12/17	11-11:30am	\$155 ●

## Special Skater

Ages 3 and up

This class will follow the Learn to Skate USA Adaptive and Basic Skills curriculum. Skating helps to foster social skills, balance, a team atmosphere, a sense of achievement, and fun. Location: Center Ice of DuPage. Min/Max: 1/10. No class 9/7-9/10, 11/3-11/5 or 11/24-11/26. (dm)

#/Link	Day	Date	Time	R/NR
<a href="#">126839</a>	Sa	10/22-12/17	12:10-1pm	\$130 ●





# youth & teen sports

## Youth Dodgeball Tournament

Grades 3rd-6th

Dip, duck, and dive! The Glen Ellyn Youth Dodgeball Tournament is loaded with fun and competition. Brackets will be divided up based on age. Teams are guaranteed two matches followed by playoffs for those teams that qualify. Teams can have a maximum of 8 players; the maximum number of players allowed on the court at any given time is 6. Location: Ackerman SFC. Min/Max: 6/12. (bt)

**Registration is completed on a team basis. The team captain should register your team.**

#/Link	Grade	Day	Date	Time	Fee
<a href="#">126687</a>	3rd-4th	Su	10/23	9am-3pm	\$100/team •
<a href="#">126688</a>	5th-6th	Su	10/23	9am-3pm	\$100/team •

## Skateboard Lessons

Ages 5-13

Appropriate for beginning and intermediate levels. Beginners learn how to start, stop, turn, basic ramp riding, and tricks; intermediate skaters learn skills based on ability. Skaters must bring a drink and wear a helmet. Knee, elbow, and wrist guards encouraged. Email [fpteamskateboard@yahoo.com](mailto:fpteamskateboard@yahoo.com) about a correct skateboard for this class. Location: Newton Park. Min/Max: 4/10. (gm)

#/Link	Age	Day	Date	Time	R/NR
<b>Canceled</b>					

## Strength & Conditioning Training

Ages 6-12

These classes are fun and include challenging workouts. Low, medium, and high intensity exercises are specifically designed to target the entire body utilizing a variety of traditional, functional, and strength exercises. Location: Ackerman SFC. Min/Max: 4/10. (bt)

#/Link	Day	Date	Time	R/NR
<a href="#">126740</a>	W	9/7-10/5	5-6pm	\$100/\$125 •

## Superhero Training

Ages 6-12

Avengers assemble! Learn basic strength training techniques to achieve superhero status from Coach Mike, a former NPC bodybuilder. And because great power comes with great responsibility, he'll also go over proper and safe form when flexing your fun, new superhero skills. Location: Ackerman SFC. Min/Max: 4/10. (bt)

#/Link	Day	Date	Time	R/NR
<a href="#">126742</a>	Tu/Th	9/6-9/29	5-6pm	\$100/\$125 •



## Curling

Ages 12-18

Windy City Curling Club (WCCC) will teach you how to throw a stone, sweep the ice, and basic strategy to get you started on your Olympic run. During the first week, game basics and safety will be covered with instruction both on and off the ice. The following weeks are reserved for scrimmage games. Players from WCCC will be on hand to lead games and provide game play strategy. No experience or skates required. Location: Windy City Curling Club, Villa Park. Min/Max: 6/24. (gm)

#/Link	Age	Day	Date	Time	R/NR
<a href="#">127048</a>	12-14	Tu	9/13-10/4	5-6pm	\$100/\$115 ●
<a href="#">127049</a>	14-18	Th	9/14-10/5	5-6pm	\$100/\$115 ●
<a href="#">127050</a>	12-14	Tu	10/18-11/8	5-6pm	\$100/\$115 ●
<a href="#">127051</a>	14-18	W	10/19-11/9	5-6pm	\$100/\$115 ●

## Ackerman Youth Flag Football

Ages 6-10

Participants will be taught the fundamentals of football on the offensive and defensive sides of the ball and will go through a variety of drills, games, and contests to develop their skill set. Location: Ackerman SFC. Min/Max: 5/25. (bt)

#/Link	Day	Date	Time	R/NR
<a href="#">126724</a>	W	9/7-9/29	4-5pm	\$40/\$55 ●
<a href="#">126725</a>	Th	9/8-9/30	4-5pm	\$40/\$55 ●
<a href="#">126727</a>	W	10/5-10/26	4-5pm	\$40/\$55 ●
<a href="#">126728</a>	Th	10/6-10/27	4-5pm	\$40/\$55 ●
<a href="#">126729</a>	Sa	10/8-10/29	10-11am	\$40/\$55 ●
<a href="#">126730</a>	W	11/2-11/16	4-5pm	\$30/\$45 ●
<a href="#">126731</a>	Th	11/3-11/17	4-5pm	\$30/\$45 ●
<a href="#">126732</a>	Sa	11/5-11/19	10-11am	\$30/\$45 ●

## Fencing - Olympic Swordplay

Ages 7-14

Learn the beginning skills and techniques of this unique sport without fighting. Fencing is an excellent sport for children and teens. It combines agility, strength, coordination, and critical thinking between attack and defensive strategies. Participants are eligible to participate in the Advanced class after completing at least one session of the Beginning course. Please ask the instructor for advanced placement. Equipment is not provided but can be rented from the Fencing Club. Please contact them at (630) 678-0035 prior to the start of class. Location: Main Street Recreation Center. Min/Max: 4/12. (gm)

#/Link	Day	Date	Time	R/NR
<b>Beginner</b>				
<a href="#">126163</a>	Sa	9/10-10/22	11:15am-12:15pm	\$92/\$138 ●
<b>Advanced</b>				
<a href="#">126164</a>	Th	9/8-12/8	6:15-7pm	\$170/\$255 ●

## Ackerman Youth Floor Hockey

Ages 6-10

Fast and fun, floor hockey develops speed, endurance, and coordination. Participants will work through a variety of drills, games, and competitions to develop their skills. Location: Ackerman SFC. Min/Max 10/25 (bt)

#/Link	Day	Date	Time	R/NR
<a href="#">126736</a>	W	9/7-9/28	5-6pm	\$40/\$55 ●
<a href="#">126737</a>	W	10/5-10/26	5-6pm	\$40/\$55 ●

## Pitching Lessons

Ages 8-17

Learn new techniques or sharpen skills during the offseason with Pitching Coach Scott Swords. Pitchers must supply their own catchers. Location: Ackerman SFC. Min/Max: 2/8. No class 10/31 or 11/21. (cb)

#/Link	Day	Date	Time	R/NR
<a href="#">127086</a>	M	10/17-12/5	6-6:45pm	\$80 ●
<a href="#">127087</a>	M	10/17-12/5	6:45-7:30pm	\$80 ●
<a href="#">127088</a>	M	10/17-12/5	7:30-8:15pm	\$80 ●
<a href="#">127089</a>	M	10/17-12/5	8:15-9pm	\$80 ●





# basketball

## Winter Youth Basketball League

The in-house league is designed to ensure that all players have an equal opportunity to participate in games and practices no matter their skill level. Games and practices for grades 1-8 are held at Ackerman SFC and local schools depending on your volunteer coach's schedule and facility availability; Kindergarten will meet once per week only at Main Street Recreation Center. All players will receive a reversible jersey. If interested in becoming a volunteer coach, be sure to indicate that on your registration. (bt)

**Registration Deadline:** 11/1

**Player Evaluations (3rd-8th Only):**

11/12, schedule TBD

**Practices Begin:** Week of 1/2

**Games Begin:** 1/7 • **Games End:** 3/11

### K-2nd Grade

Practices and games are structured around basic fundamentals, skill development, and having fun. Players are placed on teams according to their schools. Player/coach requests are not accepted.

### 3rd-4th Grade

Players learn more of the team concept by focusing less on individual skills and more on teamwork. Players will be asked to attend an evaluation session and will be drafted to teams by coaches. Team will play a 7-game season and compete in a playoff at the end of the season.

### 5th-6th Grade

This league places more emphasis on the team as whole. This is accomplished by the introduction of set plays to increase the player's ability to adapt to game situations. Players will be asked to attend an evaluation session and will be drafted to teams by coaches. Team will play a 7-game season and compete in a playoff at the end of the season.

### 7th-8th Grade

Players will be asked to attend an evaluation session and will be drafted to teams by coaches. Team will play a 7-game season and compete in a playoff at the end of the season. 7th/8th Grade Girls participate in an inter-village league with neighboring districts and will follow a slightly different schedule. Junior High athletes may participate but must be present at both the practices and games throughout the entire season.

#/Link	Grade	R/NR	
<b>Boys</b>			
<a href="#">126712</a>	Kindergarten	\$85/\$125	●
<a href="#">126706</a>	1st Grade	\$120/\$170	●
<a href="#">126707</a>	2nd Grade	\$120/\$170	●
<a href="#">126708</a>	3rd Grade	\$120/\$170	●
<a href="#">126709</a>	4th Grade	\$120/\$170	●
<a href="#">126710</a>	5th/6th Grade	\$120/\$170	●
<a href="#">126711</a>	7th/8th Grade	\$120/\$170	●
<b>Girls</b>			
<a href="#">126719</a>	Kindergarten	\$85/\$125	●
<a href="#">126713</a>	1st Grade	\$120/\$170	●
<a href="#">126714</a>	2nd Grade	\$120/\$170	●
<a href="#">126715</a>	3rd Grade	\$120/\$170	●
<a href="#">126716</a>	4th Grade	\$120/\$170	●
<a href="#">126717</a>	5th/6th Grade	\$120/\$170	●
<a href="#">126718</a>	7th/8th Grade	\$120/\$170	●

## Free Winter Youth Basketball League Clinics

Join us to help shake the dust off for the upcoming season. Clinics are free and only available to those enrolled in the Winter Youth Basketball League. Clinics are skill based and co-ed. Space is limited, and registration is required. (bt)

### Clinics are free with registration

#/Link	Day	Date	Time	
<b>Grades 1st &amp; 2nd</b>				
<a href="#">126697</a>	M	11/28	5-6pm	●
<a href="#">126698</a>	M	12/5	5-6pm	●
<a href="#">126699</a>	M	12/13	5-6pm	●
<b>Grades 3rd &amp; 4th</b>				
<a href="#">126700</a>	M	11/28	6-7pm	●
<a href="#">126701</a>	M	12/5	6-7pm	●
<a href="#">126702</a>	M	12/13	6-7pm	●
<b>Grades 5th-8th</b>				
<a href="#">126703</a>	M	11/28	7-8pm	●
<a href="#">126704</a>	M	12/5	7-8pm	●
<a href="#">126705</a>	M	12/13	7-8pm	●



## Coach Faulkner Girls Basketball Academy

Grades 3rd-8th

This program is designed to enhance your child's basketball skills. This Academy is led by Kristi Faulkner and her coaching staff. Each week, participants will work on skill development. All participants are required to bring their own basketball each week. Location: Ackerman SFC. Min/Max 25/75. (bt)

#/Link	Day	Date	Time	R/NR
<b>Canceled</b>				

## Big 3 Sports Basketball Skill Drills Camp

Grades 3rd-4th

Camp will be run by the Big 3 coaching staff, which includes standout high school, college, and former professional players. Participants will learn and work on basic dribbling, shooting, and passing drills while learning correct fundamentals in a fun and team-oriented way. Location: Ackerman SFC. Min/Max: 10/25. (bt)

#/Link	Day	Date	Time	R/NR
<a href="#">126722</a>	Sa	9/3-9/24	5-6pm	\$85/\$100 ●
<a href="#">126723</a>	Sa	10/1-10/26	5-6pm	\$85/\$100 ●

## field hockey

### RISE Field Hockey Fall Recreational Classes

Grades 1st-8th

Our fall recreational program will work on basic skills of the game of field hockey and play small-sided games and scrimmages throughout the season. Classes are once a week on Thursday evenings at Ackerman SFC. Athletes will receive a reversible pinnie for practice and will need a stick, mouthguard, and shin guards. Location: Ackerman SFC. Min/Max: 15/50. (gm)

#/Link	Grade	Day	Date	Time	R/NR
<a href="#">126316</a>	1st-4th	Th	9/8-10/20	5:30-6:30pm	\$84 ●
<a href="#">126317</a>	5th-8th	Th	9/8-10/20	6:30-8pm	\$155 ●

### RISE Field Hockey Fall Recreational League

Grades 1st-8th

Join the first recreational field hockey league in the area. The league meets on Sundays from September 18 through October 9. After registration ends, players will be assigned a team and compete against teams from Glen Ellyn and the surrounding Chicagoland area. Playdays will be round robin format and each team will play 1-2 games per meeting. Teams and game schedule will be released by September 14. Team shirts will be provided at the first meeting date. Location: Oak Park River Forest High School (201 Scoville Ave. Oak Park). (gm)

**Registration is taken at: [risefieldhockey.com](http://risefieldhockey.com)**  
**The deadline to register is 9/9 ●**





# hockey & ice skating

## Ice Skating: Basic 1

Ages 6-13

Intended for students with no previous formal instructions. Participants will learn 1- and 2-foot glides, forward and backward swizzles, and backward wiggles. Skate rentals are available. Location: Center Ice of DuPage. Min/Max: 1/20. No class 11/3-11/5 or 11/24-11/26. (dm)

#/Link	Day	Date	Time	R/NR
<a href="#">126844</a>	Th	10/20-12/15	4:30-5:10pm	\$165 ●
<a href="#">126845</a>	Th	10/20-12/15	5:30-6:10pm	\$165 ●
<a href="#">126846</a>	Sa	10/22-12/17	10-10:40am	\$165 ●
<a href="#">126847</a>	Sa	10/22-12/17	11-11:40am	\$165 ●

## Beginner Hockey

Ages 6-13

For participants who have had no formal instruction. Kids will learn basic forward and backward skating while wearing hockey equipment. Hockey skates and helmet required. Hockey stick is optional. Location: Center Ice of DuPage. Min/Max: 1/20. No class 11/3-11/5 or 11/24-11/26. (dm)

#/Link	Day	Date	Time	R/NR
<a href="#">126850</a>	Th	10/20-12/15	4:30-5:10pm	\$165 ●
<a href="#">126851</a>	Sa	10/22-12/17	9:10-9:50am	\$165 ●

## Beginner Hockey: Teen/Adult

Ages 14 and up

This class is “at your own pace” and is perfect for beginners, continuing adult skaters, or skaters who are returning to the ice after years of hiatus. Min/Max: 1/10. Location: Center Ice of DuPage. Location: Center Ice of DuPage. Min/Max: 1/20. No class 11/3-11/5 or 11/24-11/26. (dm)

#/Link	Day	Date	Time	R/NR
<a href="#">126861</a>	Sa	10/22-12/17	8:10-9:10am	\$175 ●

## Ice Skating: Teen/Adult Basic 1

Ages 14 and up

This class is “at your own pace” and is perfect for beginners, continuing skaters, or skaters who are returning to the ice after years of hiatus. Location: Center Ice of DuPage. Min/Max: 1/20. No class 11/3-11/5 or 11/24-11/26. (dm)

#/Link	Day	Date	Time	R/NR
<a href="#">126856</a>	Th	10/20-12/15	4:30-5:10pm	\$165 ●
<a href="#">126857</a>	Th	10/20-12/15	5:30-6:10pm	\$165 ●
<a href="#">126858</a>	Sa	10/22-12/17	10-10:40am	\$165 ●
<a href="#">126859</a>	Sa	10/22-12/17	11-11:40am	\$165 ●



# lacrosse

## Bulldogs Boys Fall Lacrosse

Grades 1st-8th

Players in 1st-4th will learn the necessary skills for cradling, ground balls, passing, shooting, and catching. Players should bring their own sticks. No additional equipment is needed. The 5th-8th grade program will be run in a pick-up game format. Coaches will divide the players into teams each week and act as coaching officials in the games. Full pads/equipment are required. Location: Ackerman SFC. Min/Max: 20/40. (cb)

#/Link	Grade	Day	Date	Time	R/NR
<a href="#">126473</a>	1st-4th	M	9/12-10/17	6:30-7:30pm	\$125 ●
<a href="#">126474</a>	5th-6th	M	9/12-10/17	7:30-8:30pm	\$125 ●
<a href="#">126475</a>	7th-8th	M	9/12-10/17	7:30-8:30pm	\$125 ●

## Girls Fall Lacrosse

Grades Pre-K to 8th

Jerry Considine (East Ave Lacrosse & Glenbard West Girls Varsity Lacrosse Coach), along with former and current players, provide instruction for all levels while creating a fun and welcoming environment. Practices are held on Sundays with games played on Saturdays against other area programs. A stick, goggles, and a mouth guard are required. Location: Newton Park. Min/Max: 20/40. No practice 9/25. (cb)

#/Link	Grade	Day	Date	Time	R/NR
<a href="#">126477</a>	PreK to K	Sa & Su	9/11-10/23	Su: 12-1pm Games TBD	\$85 ●
<a href="#">126479</a>	1st-4th	Sa & Su	9/11-10/23	Su: 12-1pm Games TBD	\$165 ●
<a href="#">126480</a>	5th-8th	Sa & Su	9/11-10/23	Su: 1-2:30pm Games TBD	\$200 ●

# running

## Youth Run 4 Fun

Ages 9-13

An informal introduction to running for boys and girls of all fitness levels. Fun drills, games, and relay races create a positive atmosphere in a non-competitive environment. Location: Ackerman SFC. Min/Max: 5/25. (bt)

#/Link	Day	Date	Time	R/NR
<a href="#">126733</a>	Tu	9/13-9/27	4-5pm	\$30/\$45 ●

## Lightning Running Club Fall Season 2022

Ages 6-14

Kids will build endurance and learn proper running form while training to run between a 2K and 4K in this informal, co-ed running club. Runners will be grouped by age and/or ability level. Registration fee includes practice time, team t-shirt, meet fees, and end of season meet at Maryknoll Park. Registration for this program will be capped based on the number of volunteers committed to facilitate practices. The Lightning Running Club is a volunteer-based program; if you are interested in becoming a volunteer coach, email [gmcqueen@gepark.org](mailto:gmcqueen@gepark.org). Min/Max: 10/30. (gm)

#/Link	Day	Date	Time/Location	R/NR
<a href="#">126167</a>	Tu & Sa	8/16-10/29	Tu: 6-6:45pm, Newton Park Sa: 8-8:45am, Maryknoll Park	\$95 ●





# martial arts

## Taekwondo

New students are required to purchase a uniform (\$50) prior to the first class. This fee is not included in the registration fee. Colored belt students are required to have complete sparring gear.

### Little Dragons Taekwondo

Ages 4-5

This introductory class is designed to captivate the interest of our youngest students. Skills are developed through gentle instruction and appropriate games for their ability. This class focuses on developing balance, coordination, and respect for the discipline of martial arts training. All belts. Location: Spring Avenue Recreation Center. Min/Max: 4/15. (gm)

#/Link	Day	Date	Time	R/NR
<a href="#">127082</a>	Sa	9/24-12/17	10:45-11:25am	\$156/\$234 •

### Adult/Child Taekwondo

Ages 7 and up with adult

This class provides families with a fun opportunity to spend time together while improving physical and mental conditioning through cardiovascular drills, calisthenics, and traditional taekwondo techniques including punching, kicking, and blocking. Fee is listed per person. All belts. Location: Spring Avenue Recreation Center. Min/Max: 4/15. (gm)

#/Link	Day	Date	Time	R/NR
<a href="#">127084</a>	Sa	9/24-12/17	12:25-1:15pm	\$156/\$234 •

### Early Taekwondo

Ages 6-7

Designed especially for the younger children of 6-7 years, this program helps kids develop conditioning, coordination, listening skills, and self-confidence through creative activities. All belts. Location: Spring Avenue Recreation Center. Min/Max: 4/12. (gm)

#/Link	Day	Date	Time	R/NR
<a href="#">127083</a>	Sa	9/24-12/17	11:30am-12:20pm	\$156/\$234 •

### Youth Taekwondo

Ages 8-13

This program includes a balanced cardiovascular workout, including punching, kicking, and blocking skills, using the taekwondo tradition, and self-control. Participants will improve coordination, power of concentration, balance, and both physical and mental discipline. All belts. Location: Spring Avenue Recreation Center. Min/Max: 4/12. (gm)

#/Link	Day	Date	Time	R/NR
<a href="#">127085</a>	Sa	9/24-12/17	12:25-1:15pm	\$156/\$234 •

## Shotokan Karate

### Pre-Karate

Ages 4-6

Children will develop agility, strength and coordination skills through fun and creative activities. Watch your child blossom while learning karate and having a blast at the same time. Uniforms and belt testing are options available through the instructor for an additional fee. Min/Max: 5/10. No class 11/23 or 11/26. (gm)

### Adult/Child Karate

Ages 7 and up

Learning martial arts is an excellent opportunity to spend quality time with your child while conditioning muscles, developing coordination and improving cardiovascular fitness. Uniforms and belt testing are options available through the instructor for an additional fee. Fees are per person. Min/Max: 5/15. (gm)

## Youth Karate

Ages 7-14

Youth karate classes offer a good mix of strength training, with cardiovascular and flexibility exercises. Children increase their coordination, agility and poise, as well as learn lasting personal safety skills. They also benefit from the mental stimulation of learning the choreographed moves of the kata and the discipline of conforming to the class rules. Min/Max: 5/15. (gm)

## Teen/Adult Karate

Ages 15 and up

In addition to teaching self-defense skills, karate develops flexibility, muscle tone and improves core strength. Continuing students need to purchase additional protective gear. Uniforms and belt testing are options available through the instructor for an additional fee. Location: Main Street Recreation Center. Min/Max: 8/15. (gm)



#/Link	Level	Day	Date	Time	R/NR
<b>Pre-Karate at Wheaton Park District Central Athletic Complex</b>					
<a href="#">126248</a>	Beginner/Continuing	W	9/7-12/14	4:30-5:15pm	\$179/\$268 ●
<a href="#">126247</a>	Inter/Adv.	W	9/7-12/14	5:15-6pm	\$179/\$268 ●
<b>Adult/Child Karate at Wheaton Park District Central Athletic Complex</b>					
<a href="#">126246</a>	Beg./Nov. White-Orange	Sa	9/10-12/17	2-2:55pm	\$191/\$286 ●
<a href="#">126245</a>	Intermediate Yellow-Purple	Sa	9/10-12/17	3-3:55pm	\$191/\$286 ●
<a href="#">126244</a>	Advanced Brown & Up	Sa	9/10-12/17	4-4:55pm	\$191/\$286 ●
<b>Adult/Child Karate at Main Street Recreation Center</b>					
<a href="#">126252</a>	Beg./Nov. White-Yellow	W	9/7-12/14	6:45-7:40pm	\$179/\$268 ●
<a href="#">126253</a>	Int./Adv. Blue-Black	W	9/7-12/14	7:45-8:40pm	\$179/\$268 ●
<b>Youth Karate at Wheaton Park District Central Athletic Complex</b>					
<a href="#">126251</a>	Beg./Nov. White-Orange	Sa	9/10-12/17	2-2:55pm	\$191/\$286 ●
<a href="#">126249</a>	Intermediate Yellow-Purple	Sa	9/10-12/17	3-3:55pm	\$191/\$286 ●
<a href="#">126250</a>	Advanced Brown & Up	Sa	9/10-12/17	4-4:55pm	\$191/\$286 ●
<b>Teen/Adult Karate at Main Street Recreation Center</b>					
<a href="#">126255</a>	Beg./Nov. White-Yellow	W	9/7-12/14	6:45-7:40pm	\$179/\$268 ●
<a href="#">126254</a>	Int./Adv. Blue-Black	W	9/7-12/14	8:45-10pm	\$207/\$310 ●





# soccer

## FUTURE PROS

### Junior Lakers Soccer

Ages 4-11

Weekly clinics focus on building individual and team soccer skills. Instruction, drills, and games will focus on dribbling, passing, shooting, defending, and offensive attacking skills. Groups will be divided for skill-level-appropriate training each week. Each player is required to bring their own ball, cleats, shin guards, and water for each class. Location: Ackerman SFC. Min/Max: 8/20. (bt)

#/Link	Age	Day	Date	Time	R/NR
<a href="#">126671</a>	4-6	F	9/9-10/28	4-5pm	\$110/\$160 ●
<a href="#">126672</a>	7-11	F	9/9-10/28	5-6pm	\$110/\$160 ●

### Winter House Soccer League

Ages 5-11

This is a great opportunity for boys and girls to keep their soccer skills fresh during winter. Each week, players will work on a particular skill and then scrimmage at the end of class. This league is instructed by Future Pros trainers, the same trainers used by the Glen Ellyn Lakers travel teams. Each player is required to bring their own ball, shoes, shin guards, and water for each class. Location: Ackerman SFC. Min/Max: 10/50. No class 11/24. (bt)

#/Link	Age	Day	Date	Time	R/NR
<a href="#">126673</a>	5-7	Th	11/3-12/15	5-6pm	\$100/\$150 ●
<a href="#">126674</a>	8-11	Th	11/3-12/15	6-7:30pm	\$125/\$190 ●

### Chicago Fire Soccer Clinics

Ages 3-8

Chicago Fire FC After School programs offer a weekly, structured experience, directed by their professional coaching staff. Each player is required to bring their own ball, cleats, shinguards, and water for each class. It is recommended that grownups participate with their child for the 3- to 5-year-old class. Location: Ackerman SFC. Min/Max: 6/10. (bt)

#/Link	Age	Day	Date	Time	R/NR
<b>Canceled</b>					

### Supplemental Travel Soccer Tryouts

Ages 2015-2005 Birth Year

Supplement travel soccer tryouts for Glen Ellyn Lakers and Midwest FC will be held to add additional players to existing teams or create new teams if numbers allow. Location: Ackerman SFC. (bt)

#### Tryouts are free with registration

#/Link	Age	Day	Date	Time
<a href="#">126677</a>	HS Boys	Th	10/20	7:45-9:15pm ●
<a href="#">126678</a>	2015/2014	M	11/7	4-5pm ●
<a href="#">126679</a>	2013/2012	M	11/7	5-6pm ●
<a href="#">126680</a>	2011-2009	M	11/7	6-7pm ●



## volleyball

### Ackerman Youth Volleyball Skills

Grades 5th-6th

Quick, fast, and touches on the ball with all state coach Christine Giunta-Mayer. These one-hour sessions will focus on everything your child needs to know about the game prior and during their seasons. Location: Ackerman SFC. Min/Max: 10/25. (bt)

#/Link	Day	Date	Time	R/NR
<a href="#">126734</a>	Th	11/3-11/17	4-5pm	\$65/\$80 ●
<a href="#">126735</a>	Th	12/1-12/15	4-5pm	\$65/\$80 ●

### Cyclones Volleyball Skills & Drills

Grades 3rd-8th

One of the top volleyball clubs in the area, the Cyclones, will be teaching a fun and fundamental-style volleyball program to youth through tweens. With its unique combination of drills, competition and instruction, this program focuses on breaking volleyball down into different skill stations. These stations offer the most effective way to capitalize on skills, knowledge, drills and techniques. No equipment needed. Location: College of DuPage Physical Education Center. Min/Max: 6/25. No class 10/31 or 11/21. (gm)

#/Link	Grade	Day	Date	Time	R/NR
<a href="#">126158</a>	3rd-4th	M	9/12-10/3	6-7:15pm	\$90/\$135 ●
<a href="#">126159</a>	5th-6th	M	9/12-10/3	6-7:15pm	\$90/\$135 ●
<a href="#">126160</a>	7th-8th	M	9/12-10/3	6-7:15pm	\$90/\$135 ●
<a href="#">127040</a>	3rd-4th	M	10/10-11/7	6-7:15pm	\$90/\$135 ●
<a href="#">127041</a>	5th-6th	M	10/10-11/7	6-7:15pm	\$90/\$135 ●
<a href="#">127042</a>	7th-8th	M	10/10-11/7	6-7:15pm	\$90/\$135 ●
<a href="#">127043</a>	3rd-4th	M	11/14-12/12	6-7:15pm	\$90/\$135 ●
<a href="#">127044</a>	5th-6th	M	11/14-12/12	6-7:15pm	\$90/\$135 ●
<a href="#">127045</a>	7th-8th	M	11/14-12/12	6-7:15pm	\$90/\$135 ●

## tennis

### Fall Youth Tennis Classes

Fall Tennis lessons are filled with fun games and drills designed to introduce new players to the sport and help develop the skills of more experienced players. Please bring a racquet to class or you can purchase one online using code 125497. Location: Sunset Park. Min/Max: 4/14. (bt)

#/Link	Day	Date	Time	R/NR
<b>Red Blast: Ages 4-6</b>				
<a href="#">126696</a>	M	9/12-10/3	4-5pm	\$110/\$150 ●
<a href="#">126695</a>	W	9/14-10/5	4-5pm	\$110/\$150 ●
<b>Orange Blast: Ages 7-8</b>				
<a href="#">126694</a>	M	9/12-10/3	5-6pm	\$110/\$150 ●
<a href="#">126693</a>	W	9/14-10/5	5-6pm	\$110/\$150 ●
<b>Green Blast: Ages 9-10</b>				
<a href="#">126689</a>	Tu	9/13-10/4	4-5pm	\$110/\$150 ●
<a href="#">126690</a>	Th	9/15-10/6	4-5pm	\$110/\$150 ●
<b>Junior Competitive: Grades 6-8</b>				
<a href="#">126691</a>	Tu	9/13-10/4	5-6pm	\$110/\$150 ●
<a href="#">126692</a>	Th	9/15-10/6	5-6pm	\$110/\$150 ●





# adult sports

## YOU MAY ALSO LIKE

- Adult Hockey & Ice Skating.....pg. 59**
- Martial Arts.....pg. 61**
- Platform Tennis Leagues/Classes....pg. 79**

### Men’s Basketball League

Ages 18 and up  
 Teams play an 8-game regular season followed by a single-elimination postseason tournament for teams that qualify. Email [bthomas@gepark.org](mailto:bthomas@gepark.org) for more details. Location: Ackerman SFC. Min/Max: 4/10. (bt)

#### Register by 9/1

#/Link	League	Date	R/NR
<a href="#">126650</a>	Sunday AM Open	9/11-11/6	\$600/team ●

### Pickleball Start/Restart

Ages 18 and up  
 Interested in joining one of the fastest growing sports? Whether you’re new to the sport of Pickleball or need a refresher, Pickleball Start/Restart covers the basic skills, grips, and strategies to the game. Players are required to provide their own paddle. Location: Village Green Park. Min/Max: 6/12. (bt)

#/Link	Level	Day	Date	Time	R/NR
<a href="#">126647</a>	Beg.	F	9/16-10/21	10-11am	\$135/\$170 ●
<a href="#">126648</a>	Int.	F	9/16-10/21	11am-12pm	\$135/\$170 ●

### \$5 Pickleball Clinics

Ages 18 and up  
 Learn to play the fast and fun game of pickleball. Participants are encouraged to provide their own paddle. Staff will work on various skills and drills with participants. Location: Village Green Park. Min/Max: 8/25. (bt)

#/Link	Day	Date	Time	R/NR
<a href="#">127168</a>	Sa	9/10	10:30am-12pm	\$5 ●
<a href="#">127169</a>	Sa	10/8	10:30am-12pm	\$5 ●

### \$5 Platform Tennis Clinics

Ages 6 and up  
 Learn the game of Platform Tennis and how to become involved in the program. Several of the area’s top platform tennis professionals will be on hand to provide instruction on grips, rules, and strategies. Location: Platform Tennis Center. Min/Max: 1/20. (bt)

#/Link	Section	Day	Date	Time	R/NR
<a href="#">126570</a>	Juniors (6-17)	F	9/9	5-6pm	\$5 ●
<a href="#">126571</a>	Women	F	9/9	6-7pm	\$5 ●
<a href="#">126572</a>	Men	F	9/9	7-8pm	\$5 ●

# HOCKEY STARTS HERE

Take the Ice. Learn to Play. Play the Game.

All Ages!  
8 and under &  
9 and older programs

## Future Flames In House Hockey

The Future Flames is a Learn to Play developmental hockey program for all ages. Practices are USA Hockey ADM format with station based learning, small area games and cross ice scrimmages that are coach refereed.

Our focus is on FUN, motivating practices and games, developing reasoning skills, building confidence, individual skill development and simple rules and ethics.

All players who register will be placed on a team – there are no cuts.



All skates held @ Addison Ice Arena  
475 Grace St. Addison, IL.

### FALL REGISTRATION

- 3 sessions per week including two skills sessions  
and one weekend cross-ice in-house scrimmage.

- Fall session runs early September 2022 - December 2022

Questions? Contact:

Early Development Director:

Joe Tomasek

[jmtomasek@gmail.com](mailto:jmtomasek@gmail.com)

[www.chicagoflameshockey.com](http://www.chicagoflameshockey.com)



\*Players are encouraged to register for the beginning of the season, however, late registrations are accepted anytime and will be pro-rated!



# dance academy



Please contact Katy Speck at [kspeck@gepark.org](mailto:kspeck@gepark.org) with questions.

## class descriptions

### Adult/Tot Dance

Designed for our littlest dancers, this class introduces basic ballet, coordination, and gross motor skills through creative movement and interactive songs with a caregiver present. Ballet shoes are optional for adults/caregivers.

### Tiny Tot

Your child will learn dance concepts and develop rhythm, coordination, and balance while moving and grooving to music and using creative props to inspire imagination. Adults are required to stay within the building for the duration of each class, no exceptions. Children must be able to attend class without an adult/caregiver present.

### Creative Movement

This class develops motor skills, balance, cognitive awareness, creativity, rhythm, musicality, and self-esteem. Adults are required to stay within the building for the duration of each class, no exceptions. Children must be able to attend class without an adult/caregiver present.

### Creative Hip Hop

This class develops creativity and musicality with a special focus on the rhythm, muscle memory, and coordination found in this urban dance style. Adults are required to stay within the building for the duration of each class, no exceptions. Children must be able to attend class without an adult/caregiver present.

### Pre-Ballet/Tap

This class is divided into two units: ballet and tap. Your child will be taught core concepts, age-appropriate technique, and vocabulary in these two genres of dance.

### Intro Ballet/Jazz

Your child will learn core concepts from both ballet and jazz. Both techniques will be taught in class at an age-appropriate level.

### Ballet 1

This class will build a solid foundation of ballet terms and technique. Your child will learn to have musicality within their movement and gain strength. We will focus on core ballet concepts and build upon their previous dance knowledge.

## Ballet 2

This class will use the foundations built in Ballet 1 but continue to grow and expand knowledge and ballet technique. Your child will learn more complex movement, and skills.

## Jazz 1

This class is a focus on jazz technique and style, and growing confidence in movement. Your child will learn basic technique to rhythmic songs, while also finding their own way of moving.

## Tap 1

Your child will be taught core concepts, age-appropriate technique, and vocabulary in tap.

## Hip Hop 1

Your child will learn the basics of hip hop in this class. This high energy style of dance encompasses many different urban dance styles and focuses on rhythm, muscle memory, and coordination. Gym shoes or sneakers are usually worn.

## Modern

This class will center around modern techniques and finding your dancer's center. It will help dancers to find meaning in the movements they are doing and express that outwardly. We explore new ways of moving while building core strength and flexibility.

# class schedule

Instructional dance classes are offered on a seasonal basis. Download the [Dance Academy Guide](#), which includes dance class dress codes, at [gepark.org/dance](http://gepark.org/dance). Location: Spring Avenue Recreation Center. (ks)

## SESSION I

#/Link	Class	Day	Age	Date	Time	Min/Max	R/NR	
<a href="#">126908</a>	Creative Movement	M	3-4	9/12-10/17	4:30-5:15pm	5/12	\$60/\$75	●
<a href="#">126965</a>	Pre-Ballet/Tap	M	4-5	9/12-10/17	5:20-6:05pm	5/12	\$60/\$75	●
<a href="#">127095</a>	Ballet 1	M	5-6	9/12-10/17	6:10-6:55pm	5/12	\$60/\$75	●
<a href="#">127096</a>	Ballet 2	M	7-8	9/12-10/17	7-8pm	5/12	\$80/\$100	●
<a href="#">127098</a>	Adult/Tot	Tu	18-36 mo.	9/13-10/18	4:10-4:40pm	5/12	\$40/\$50	●
<a href="#">127099</a>	Tiny Tot	Tu	2.5-3	9/13-10/18	4:45-5:15pm	5/8	\$40/\$50	●
<a href="#">127100</a>	Tap 1	Tu	5-6	9/13-10/18	5:20-6:05pm	5/12	\$60/\$75	●
<a href="#">127101</a>	Hip Hop 1	Tu	6-8	9/13-10/18	5:20-6:05pm	5/12	\$60/\$75	●
<a href="#">127102</a>	Modern	Tu	7-9	9/13-10/18	6:10-6:55pm	5/12	\$60/\$75	●
<a href="#">127103</a>	Jazz 1	Tu	7-9	9/13-10/18	7-8pm	5/12	\$80/\$100	●
<a href="#">127104</a>	Adult/Tot	W	18-36 mo.	9/14-10/19	9:15-9:45am	5/12	\$40/\$50	●
<a href="#">127105</a>	Tiny Tot	W	2.5-3	9/14-10/19	9:55-10:25am	5/8	\$40/\$50	●
<a href="#">127106</a>	Creative Movement	W	3-4	9/14-10/19	10:30-11:15am	5/12	\$60/\$75	●
<a href="#">127107</a>	Pre-Ballet/Tap	W	4-5	9/14-10/19	11:20am-12:05pm	5/12	\$60/\$75	●
<a href="#">127108</a>	Creative Hip Hop	W	3-4	9/14-10/19	4:30-5:15pm	5/12	\$60/\$75	●
<a href="#">127109</a>	Intro Ballet/Jazz	W	4-5	9/14-10/19	5:20-6:05pm	5/12	\$60/\$75	●
<a href="#">127110</a>	Hip Hop 1	W	6-8	9/14-10/19	6:10-6:55pm	5/12	\$60/\$75	●
<a href="#">127111</a>	Ballet 1	W	5-6	9/14-10/19	7-7:45pm	5/12	\$60/\$75	●
<a href="#">127113</a>	Pre-Ballet/Tap	Th	4-5	9/15-10/20	9:30-10:15am	5/12	\$60/\$75	●
<a href="#">127114</a>	Creative Movement	Th	3-4	9/15-10/20	10:20-11:05am	5/12	\$60/\$75	●
<a href="#">127115</a>	Tiny Tot	Th	2.5-3	9/15-10/20	11:15-11:45am	5/8	\$40/\$50	●
<a href="#">127116</a>	Pre-Ballet/Tap	Th	4-5	9/15-10/20	5:20-6:05pm	5/12	\$60/\$75	●
<a href="#">127117</a>	Ballet 1	Th	5-6	9/15-10/20	6:10-6:55pm	5/12	\$60/\$75	●



# class schedule continued

## SESSION I CONTINUED

#/Link	Class	Day	Age	Date	Time	Min/Max	R/NR	
<a href="#">127118</a>	Tiny Tot	F	2.5-3	9/16-10/21	9:15-9:45am	5/8	\$40/\$50	●
<a href="#">127119</a>	Creative Movement	F	3-4	9/16-10/21	9:50-10:35am	5/12	\$60/\$75	●
<a href="#">127120</a>	Adult/Tot	F	18-36 mo.	9/16-10/21	10:45-11:15am	5/12	\$40/\$50	●
<a href="#">127121</a>	Pre-Ballet/Tap	Sa	4-5	9/17-10/22	9-9:45am	5/12	\$60/\$75	●
<a href="#">127122</a>	Ballet 1	Sa	5-6	9/17-10/22	9:50-10:35am	5/12	\$60/\$75	●
<a href="#">127123</a>	Creative Movement	Sa	3-4	9/17-10/22	10:40-11:25am	5/12	\$60/\$75	●
<a href="#">127124</a>	Tiny Tot	Sa	2.5-3	9/17-10/22	11:30am-12pm	5/8	\$40/\$50	●

## SESSION II • No class 11/21-11/26

#/Link	Class	Day	Age	Date	Time	Min/Max	R/NR	
<a href="#">127125</a>	Creative Movement	M	3-4	11/7-12/19	4:30-5:15pm	5/12	\$60/\$75	●
<a href="#">127126</a>	Pre-Ballet/Tap	M	4-5	11/7-12/19	5:20-6:05pm	5/12	\$60/\$75	●
<a href="#">127127</a>	Ballet 1	M	5-6	11/7-12/19	6:10-6:55pm	5/12	\$60/\$75	●
<a href="#">127128</a>	Ballet 2	M	7-8	11/7-12/19	7-8pm	5/12	\$80/\$100	●
<a href="#">127129</a>	Adult/Tot	Tu	18-36 mo.	11/1-12/13	4:10-4:40pm	5/12	\$40/\$50	●
<a href="#">127130</a>	Tiny Tot	Tu	2.5-3	11/1-12/13	4:45-5:15pm	5/8	\$40/\$50	●
<a href="#">127135</a>	Tap 1	Tu	5-6	11/1-12/13	5:20-6:05pm	5/12	\$60/\$75	●
<a href="#">127136</a>	Hip Hop 1	Tu	6-8	11/1-12/13	5:20-6:05pm	5/12	\$60/\$75	●
<a href="#">127137</a>	Modern	Tu	7-9	11/1-12/13	6:10-6:55pm	5/12	\$60/\$75	●
<a href="#">127138</a>	Jazz 1	Tu	7-9	11/1-12/13	7-8pm	5/12	\$80/\$100	●
<a href="#">127139</a>	Adult/Tot	W	18-36 mo.	11/2-12/14	9:15-9:45am	5/12	\$40/\$50	●
<a href="#">127140</a>	Tiny Tot	W	2.5-3	11/2-12/14	9:55-10:25am	5/8	\$40/\$50	●
<a href="#">127141</a>	Creative Movement	W	3-4	11/2-12/14	10:30-11:15am	5/12	\$60/\$75	●
<a href="#">127142</a>	Pre-Ballet/Tap	W	4-5	11/2-12/14	11:20am-12:05pm	5/12	\$60/\$75	●
<a href="#">127143</a>	Creative Hip Hop	W	3-4	11/2-12/14	4:30-5:15pm	5/12	\$60/\$75	●
<a href="#">127144</a>	Intro Ballet/Jazz	W	4-5	11/2-12/14	5:20-6:05pm	5/12	\$60/\$75	●
<a href="#">127145</a>	Hip Hop 1	W	6-8	11/2-12/14	6:10-6:55pm	5/12	\$60/\$75	●
<a href="#">127146</a>	Ballet 1	W	5-6	11/2-12/14	7-7:45pm	5/12	\$60/\$75	●
<a href="#">127147</a>	Pre-Ballet/Tap	Th	4-5	11/3-12/15	9:30-10:15am	5/12	\$60/\$75	●
<a href="#">127148</a>	Creative Movement	Th	3-4	11/3-12/15	10:20-11:05am	5/12	\$60/\$75	●
<a href="#">127149</a>	Tiny Tot	Th	2.5-3	11/3-12/15	11:15-11:45am	5/8	\$40/\$50	●
<a href="#">127150</a>	Pre-Ballet/Tap	Th	4-5	11/3-12/15	5:20-6:05pm	5/12	\$60/\$75	●
<a href="#">127151</a>	Ballet 1	Th	5-6	11/3-12/15	6:10-6:55pm	5/12	\$60/\$75	●
<a href="#">127152</a>	Tiny Tot	F	2.5-3	11/4-12/16	9:15-9:45am	5/8	\$40/\$50	●
<a href="#">127153</a>	Creative Movement	F	3-4	11/4-12/16	9:50-10:35am	5/12	\$60/\$75	●
<a href="#">127154</a>	Adult/Tot	F	18-36 mo.	11/4-12/16	10:45-11:15am	5/12	\$40/\$50	●
<a href="#">127157</a>	Pre-Ballet/Tap	Sa	4-5	11/5-12/17	9-9:45am	5/12	\$60/\$75	●
<a href="#">127155</a>	Ballet 1	Sa	5-6	11/5-12/17	9:50-10:35am	5/12	\$60/\$75	●
<a href="#">127156</a>	Creative Movement	Sa	3-4	11/5-12/17	10:40-11:25am	5/12	\$60/\$75	●
<a href="#">127158</a>	Tiny Tot	Sa	2.5-3	11/5-12/17	11:30am-12pm	5/8	\$40/\$50	●

# gymnastics



Proper attire is mandatory for gymnastics participants. Girls should wear a gymnastics leotard or shorts and t-shirt (no tights or jewelry). Boys should wear shorts or sweatpants and t-shirt. Bare feet are required for all participants. Instructors reserve the right to move participants to a different class if they are not developmentally ready. No new registration will be taken after the second week of class. Please contact Clint Babicz at [cbabicz@gepark.org](mailto:cbabicz@gepark.org) with questions.

## Adult/Tot Gymnastics

Ages 18-36 months

This fun-filled adult/tot play time program introduces your child to the exciting world of tumbling and gymnastics. Adult/Tot features tumbling and gymnastics equipment, balls, hoops, circles, and parachute play. Adult involvement is the key. Please no siblings. Location: Spring Avenue Recreation Center. Min/Max: 5/12. No class 11/21-11/26. (cb)

#/Link	Day	Date	Time	R/NR
<a href="#">126172</a>	M	9/12-10/17	9-9:30am	\$66/\$99 ●
<a href="#">126174</a>	W	9/7-10/19	9:15-9:45am	\$77/\$115 ●
<a href="#">126176</a>	Th	9/8-10/20	9:15-9:45am	\$77/\$115 ●
<a href="#">126178</a>	Sa	9/10-10/15	9-9:30am	\$66/\$99 ●
<a href="#">127052</a>	M	11/7-12/19	9-9:30am	\$66/\$99 ●
<a href="#">127053</a>	W	11/2-12/14	9:15-9:45am	\$66/\$99 ●
<a href="#">127054</a>	Th	11/3-12/15	9:15-9:45am	\$66/\$99 ●
<a href="#">127055</a>	Sa	11/5-12/17	9-9:30am	\$66/\$99 ●

## Tiny Tumblers Gymnastics

Age 3

This introductory gymnastic class helps develop gross motor skills and body awareness and teaches self-confidence while having fun. A variety of gymnastics and tumbling stations will be set up each week to introduce your gymnasts to the basic skills used in this sport. Children must be able to attend without a caregiver present. Location: Spring Avenue Recreation Center. Min/Max: 5/10. No class 11/21-11/26. (cb)

#/Link	Day	Date	Time	R/NR
<a href="#">126192</a>	M	9/12-10/17	9:45-10:15am	\$66/\$99 ●
<a href="#">126190</a>	W	9/7-10/19	10-10:30am	\$77/\$115 ●
<a href="#">126191</a>	Th	9/8-10/20	11-11:30am	\$77/\$115 ●
<a href="#">126193</a>	Sa	9/10-10/15	9:45-10:15am	\$66/\$99 ●
<a href="#">127060</a>	M	11/7-12/19	9:45-10:15am	\$66/\$99 ●
<a href="#">127061</a>	W	11/2-12/14	10-10:30am	\$66/\$99 ●
<a href="#">127062</a>	Th	11/3-12/15	11-11:30am	\$66/\$99 ●
<a href="#">127063</a>	Sa	11/5-12/17	9:45-10:15am	\$66/\$99 ●

AUTUMN 2022 • 70

● Registration open now ● Registration opens at 9am August 27





### Preschool Gymnastics

Ages 4-5

A variety of gymnastics and tumbling stations will be set up each week to introduce your gymnast to the basic skills used in this sport. Children must be able to attend class without a caregiver present. Location: Spring Avenue Recreation Center. Min/Max: 5/12. No class 11/21-11/26. (cb)

### Kindergarten Gymnastics

Ages 5-6

This class was designed to help refine and develop the gross motor skills taught in previous classes. A higher skill level of gymnastics stations will be set up each week to increase strength, flexibility, and coordination. Location: Spring Avenue Recreation Center. Min/Max: 5/12. No class 11/21-11/26. (cb)

## Stay & Play Open Gym

Children (preschool or younger) can stay active and play in the Spring Avenue Gymnastics Center. This safe and fun environment is the perfect spot for your child to interact with you and other peers. Pre-registration is not required but come early as space is limited to the first 30 participants. Children must be accompanied and supervised by an adult. Please pay inside the Gymnastics Center. (cb)

**Dates:** Aug. 26 to Dec. 13  
**Day:** Tuesdays & Fridays  
**Time:** 9am-11am  
**Drop-in R/NR Fee:** \$5/\$8  
**10-Visit Punch Card R/NR Fee:** \$40/\$70

#/Link	Day	Date	Time	R/NR
<b>Preschool</b>				
<a href="#">126196</a>	W	9/7-10/19	5-5:45pm	\$91/\$136 ●
<a href="#">126198</a>	Th	9/8-10/20	10-10:45am	\$91/\$136 ●
<a href="#">126200</a>	Sa	9/10-10/15	10:30-11:15am	\$78/\$117 ●
<a href="#">127064</a>	W	11/2-12/14	5-5:45pm	\$78/\$117 ●
<a href="#">127065</a>	Th	11/3-12/15	10-10:45am	\$78/\$117 ●
<a href="#">127066</a>	Sa	11/5-12/17	10:30-11:15am	\$78/\$117 ●
<b>Kindergarten</b>				
<a href="#">126205</a>	W	9/7-10/19	6-6:45pm	\$91/\$136 ●
<a href="#">126208</a>	Sa	9/10-10/15	11:30am-12:15pm	\$78/\$117 ●
<a href="#">127072</a>	W	11/2-12/14	6-6:45pm	\$78/\$117 ●
<a href="#">127073</a>	Sa	11/5-12/17	11:30am-12:15pm	\$78/\$117 ●
<b>Preschool &amp; Kindergarten (Combined Class)</b>				
<a href="#">126214</a>	M	9/12-10/17	10:30-11:15am	\$78/\$117 ●
<a href="#">126209</a>	M	9/12-10/17	1:30-2:15pm	\$78/\$117 ●
<a href="#">126210</a>	Tu	9/6-10/18	2:30-3:15pm	\$91/\$136 ●
<a href="#">126215</a>	W	9/7-10/19	10:45-11:30am	\$91/\$136 ●
<a href="#">126212</a>	W	9/7-10/19	4-4:45pm	\$91/\$136 ●
<a href="#">127067</a>	M	11/7-12/19	10:30-11:15am	\$78/\$117 ●
<a href="#">127068</a>	M	11/7-12/19	1:30-2:15pm	\$78/\$117 ●
<a href="#">127069</a>	Tu	11/1-12/13	2:30-3:15pm	\$78/\$117 ●
<a href="#">127070</a>	W	11/2-12/14	10:45-11:30am	\$78/\$117 ●
<a href="#">127071</a>	W	11/2-12/14	4-4:45pm	\$78/\$117 ●



### Pre-Developmental Gymnastics

1st grade to age 12

The focus of this beginner program will be on floor exercise, springboard skills, bars, and beam. Stretching and conditioning for muscle tone will be included.

Location: Spring Avenue Recreation Center. Min/Max: See online. No class 11/21-11/26. (cb)

#/Link	Day	Date	Time	R/NR
<a href="#">126216</a>	Tu	9/6-10/18	4:30-5:30pm	\$105/\$157 ●
<a href="#">126218</a>	Th	9/8-10/20	4-5pm	\$105/\$157 ●
<a href="#">126220</a>	Sa	9/10-10/15	12:30-1:30pm	\$90/\$135 ●
<a href="#">127074</a>	Tu	11/1-12/13	4:30-5:30pm	\$90/\$135 ●
<a href="#">127075</a>	Th	11/3-12/15	4-5pm	\$90/\$135 ●
<a href="#">127076</a>	Sa	11/5-12/17	12:30-1:30pm	\$90/\$135 ●

### Developmental Gymnastics

Ages 8-12

This program is a continuation of Pre-Developmental Gymnastics. Participants must be able to perform round offs, cartwheels, forward/backward rolls, handstand, and a bridge in order to register. Location: Spring Avenue Recreation Center. Min/Max: See online. No class 11/21-11/26. (cb)

#/Link	Day	Date	Time	R/NR
<a href="#">126223</a>	Tu	9/6-10/18	5:45-6:45pm	\$105/\$157 ●
<a href="#">126225</a>	Th	9/8-10/20	5:15-6:15pm	\$105/\$157 ●
<a href="#">126226</a>	Sa	9/10-10/15	12:30-1:30pm	\$90/\$135 ●
<a href="#">127077</a>	Tu	11/1-12/13	5:45-6:45pm	\$90/\$135 ●
<a href="#">127078</a>	Th	11/3-12/15	5:15-6:15pm	\$90/\$135 ●
<a href="#">127079</a>	Sa	11/5-12/17	12:30-1:30pm	\$90/\$135 ●

### Tumbling 1

Ages 7-14

No skills required. Start out learning the proper way to perform handstands, cartwheels, and more. Participants will build on their skills each session. Location: Spring Avenue Recreation Center. Min/Max: See online. No class 11/21-11/26. (cb)

#/Link	Day	Date	Time	R/NR
<a href="#">126232</a>	Th	9/8-10/20	6:30-7:15pm	\$91/\$136 ●
<a href="#">127080</a>	Th	11/3-12/15	6:30-7:15pm	\$78/\$117 ●

### Tumbling 2

Ages 7-14

Participants must possess basic skills such as cartwheel, round-off, forward/backward rolls, handstand, and bridge. Location: Spring Avenue Recreation Center. Min/Max: See online. No class 11/21-11/26. (cb)

#/Link	Day	Date	Time	R/NR
<a href="#">126235</a>	Th	9/8-10/20	6:30-7:30pm	\$105/\$157 ●
<a href="#">127081</a>	Th	11/3-12/15	6:30-7:30pm	\$90/\$135 ●



# ackerman sfc

800 ST. CHARLES ROAD, GLEN ELLYN • [ACKERMANSFC.COM](http://ACKERMANSFC.COM)



## ackerman SFC facility hours

### Fitness Center/Walking Track

Monday-Thursday .....	4:30am-10pm
Friday.....	4:30am-9pm
Saturday .....	6am-7pm
Sunday.....	7am-7pm

### Front Desk

Monday-Friday.....	5am-9pm
Saturday .....	6am-5pm
Sunday .....	7am-5pm

### Holidays

September 5 .....	7am-1pm
November 24.....	7am-1pm
December 24.....	7am-1pm
December 25.....	Closed
December 31.....	7am-1pm
January 1.....	7am-3pm

## what's in the gym

- PRECOR Adaptive Motion Trainers
- PRECOR EFX Ellipticals with Crossramp
- Matrix and Life Fitness Treadmills
- NuStep Recumbent Steppers
- Matrix, Octane, & Life Fitness Ellipticals
- Matrix ARC Trainers
- Matrix Bikes (Recumbent/Upright/Hybrid)
- Matrix Single Station Strength Machines
- Gauntlet Stairmasters
- Scift Pro2 Trainers
- Concept 2 Rowing Machines
- Xerball & Medicine Ball
- Free Weights & Core Conditioning
- Stretching & CrossFit Area w/TRX Straps
- Cable Cross Weight Machines

## amenities

7,000+ square foot fitness center, 3 court gymnasium, 45-yard by 60-yard indoor turf field, 2 lane indoor track (10.3 laps = 1 mile), group fitness studio, Ackerman Training Room with batting cages, locker rooms and shower facility, and free Wi-Fi.

[See the Group  
Fitness Schedule »](#)

[View Personal  
Training Options »](#)

# membership rates and benefits

## \$0 ENROLLMENT FEE

- Fitness center and indoor track access
- Free weekly group fitness classes
- Open court/turf time
- Orientation with a personal trainer
- Bring a guest on the first Wednesday of the month
- Use of the Spring Avenue Fitness Center

We will automatically charge your membership fees to the credit/debit card you place on file each month.

Membership Type*	Resident	Nonresident
Teen (14-17)	\$21	\$23
Senior (60+)	\$21	\$23
Active Military	\$21	\$23
Individual (18-59)	\$30	\$35
Couple	\$50	\$55
Family	\$60	\$65

## work in glen ellyn?

Ackerman SFC offers special membership rates to Glen Ellyn employees and teachers with proof of employment. Call or visit the Ackerman SFC front desk for details.



*Home for break?*

## 30 Days for \$30 Student & Teacher Special

Keep up with your workouts over the break. Sign up for an Ackerman SFC membership good for 30 days for only \$30 any time between November 15, 2022, to January 15, 2023. 30-day memberships do not renew automatically.

*A valid school ID or proof of employment is required at time of purchase. Must be 14 years of age or older.*

## MEMBERSHIP ADD-ON

### college of dupage lap swimming

Active Ackerman SFC fitness members (ages 16+) may purchase a lap swimming monthly membership to swim at College of DuPage's indoor pool for just \$20 per member per month. Members that are ages 16-17 must have an adult/guardian sign the College's waiver of liability. Walking track only members are not eligible for this offer. To sign up, visit the College's Member Service Office where they will setup your membership. C.O.D. indoor pool hours are available at: [www.gepark.org/COD](http://www.gepark.org/COD)

\*Residents are defined as those living within Glen Ellyn Park District boundaries. Must provide proof of age if requested. A teen is defined as a person age 14-17 (age 11-13, if certified). Waiver must be signed by a legal guardian. An individual is defined as a person age 18 and up. A senior is defined as a person age 60 and up. A family is defined as up to six immediate family members residing in the same household and children 26 years and younger living at home. Other relatives and individuals in the same household are not included in the family pass. Children 10 years and under have access to open turf, open gym, and open climb. Children 8 to 13 can access the track with an adult. Fitness center is available for children 14 years and older (age 11-13 after orientation; see front desk to set up an appointment). A couple is defined as two people living at the same address.



## group fitness classes

Group fitness classes are included as part of the Ackerman SFC member fee. With more than 50 options to choose from each week, you're sure to find a class to fall in love with. Classes do not require registration, and may take place on the court, turf, or in the 2nd floor fitness studio.

[VIEW THE CLASS SCHEDULE »](#)



## walking track

The track is free for Ackerman members. Ages 8-13 must be accompanied by a member age 18 years or older to use the walking track.

### DAILY DROP-IN

Ackerman SFC member ..... Free  
 R/NR Daily Drop-in..... \$5/\$7

### ANNUAL PASSES

Resident (Ages 8-59)..... \$35  
 Nonresident (Ages 8-59) ..... \$50  
 Senior (Ages 60 & Up)..... \$25

## open pickleball

Using a paddle, low net and a plastic ball with holes, this unique sport is enjoyed by people of all ages and athletic abilities thanks to its ease of play and straightforward rules.

### SCHEDULE

To view the schedule, visit: [ackermansfc.com/pickleball](http://ackermansfc.com/pickleball)

### FEES

Ackerman SFC member ..... Free  
 R/NR Daily Drop-in..... \$5/\$7  
 R/NR 5-Visit Punch Card ..... \$20/\$30

## open court & turf

No reservations required. Please call the Ackerman SFC front desk for daily available open gym times. Open to both members and non-members.

### DAILY DROP-IN FEES

Ackerman SFC member ..... Free  
 Youth R/NR Daily Drop-in..... \$4/\$5  
 Adult R/NR Daily Drop-in ..... \$5/\$6

## ackerman kids zone

Get your workout in as your little ones take part in fun activities like Tot Tumbling, Arts and Crafts, Story Pajama Time, and other formats with the new Ackerman Kids Zone, available 8:30 to 10:30am Monday, Wednesday, and Friday. Sign your child up for monthly unlimited classes (\$20/month for the 1st child and \$12/month for each additional child), or drop-in for \$7 per child.

Kids Zone is currently available to Ackerman SFC members only. Spots are limited to 15 kids per class. Visit [ackermansfc.com/kids-zone](http://ackermansfc.com/kids-zone) to learn more.

## monday miles running/walking club

Step out with fellow runners, joggers, and walkers every Monday evening from 5 to 7pm, and log your distance to earn special milestone prizes. Monday Miles will be held outdoors at Ackerman Park when weather allows and indoors on the walking track during inclement weather. Participants should meet at the front desk inside Ackerman SFC each Monday at 5pm.

Monday Miles is free for Ackerman SFC members. Walking track pass or \$3 drop-in fee required for non-members. All ages welcome. (mn)



## personal training

Our certified personal trainers will design a program that meets your specific fitness needs. They can help you reach and/or maintain your goal by guiding you through safe, productive, supervised workouts.

# of Sessions	Length	Member	Non-Member
One	30 minutes	\$29	\$49
Three	30 minutes	\$84	\$126
Six	30 minutes	\$150	\$225
Twelve	30 minutes	\$282	\$423
One	1 hour	\$45	\$60
Three	1 hour	\$130	\$175
Six	1 hour	\$255	\$340
Twelve	1 hour	\$500	\$638

## sports training

Visit the Ackerman SFC front desk for more information or to setup your sessions.

### SPORTS PERFORMANCE TRAINING

Strength and Conditioning Coach Mike Nishimura can help players in all sports programs increase their athleticism. Sessions focus on the three major goals of improving athletic performance, reducing athletic injuries, and teaching lifelong fitness and movement skills. You'll receive a customized workout plan to target different areas of the body and learn how to properly use workout equipment. Sessions start at \$29.

### VOLLEYBALL TRAINING

All-State Coach Christine Giunta-Mayer offers private lessons for student athletes in 5th grade through college. Private lessons are perfect for players that want to focus on specifics of their game. Sessions start at \$70.

### BASKETBALL TRAINING

Sign up for private lessons from Skill Development Coach Brett Love. Brett has high school and collegiate level playing experience with the credentials to train players to take their skills to the next level. Sessions start at \$45.

# fitness events

SEPT

18

## Lake Ellyn 1-Mile Classic & Kids Dash

Learn more on page 12

OCT

9

## WERQ-a-thon

Learn more on page 13

NOV

24

## Turkey Burn

Learn more on page 10

NOV

24

## Turkey Trot 5-Mile Run

Learn more on page 10

DEC

4

## Christmas Sweater Shuffle

Learn more on page 15

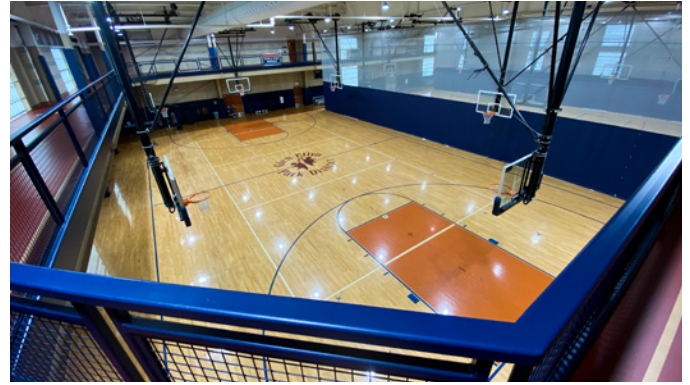
JAN

1

## New Year's Burn

Look for details in the Winter Playbook





## batting cage rentals

Four batting cage tunnels are available to rent at Ackerman SFC. Rental includes use of a batting cage tunnel and one L screen. This facility requires visitors to bring their own sport-specific ball. Guests of high school age and older may use the batting cages independently. Guests in 8th grade and below must be accompanied by an adult at all times. Please note, the use of batting cages is not included with memberships, punch cards, or daily drop ins. Batting cages can be reserved in advance by calling (630) 317-0134 or emailing [bthomas@gepark.org](mailto:bthomas@gepark.org).

## facility rentals

Three full-size basketball courts and an indoor artificial turf field are available to rent for practices, games, and more. The facility also features an outdoor volleyball court, training room, fitness/dance studio, and a party room. (630) 317-0134 or emailing [bthomas@gepark.org](mailto:bthomas@gepark.org).

## birthday parties

Our birthday party packages are bursting with activities for kids in an environment that is fun, safe, and truly unique. Choose from a wide variety of age-appropriate themes for kids ages 3 and up. View package options at [AckermanSFC.com/birthday-parties](http://AckermanSFC.com/birthday-parties).

Ackerman SFC members use Spring Avenue Fitness Center for free as part of their membership!

# spring avenue fitness

185 SPRING AVENUE, GLEN ELLYN • (630) 858-2462

## membership fees

Annual memberships are valid for one year from the date of purchase.

Ackerman SFC fitness members have full access to Spring Avenue Fitness Center and group fitness classes.

### INDIVIDUAL FEES (AGES 14-59)

Annual Pass..... \$245R/\$365NR  
 3-Month Pass..... \$135R/\$195NR  
 1-Day Pass..... \$7R/\$8NR

### SENIOR FEES (AGES 60 & UP)

Annual Pass..... \$120R/\$180NR  
 1-Day Pass..... \$4R/\$6NR

## center hours

Monday-Thursday ..... 9am-8pm  
 Friday..... 9am-5pm  
 Saturday..... 9am-12pm  
 Sunday..... Closed

### HOLIDAY HOURS

Spring Avenue members can utilize Ackerman SFC on holidays when the fitness center is closed.

September 5..... Closed  
 November 24-25..... Closed  
 December 23-26 ..... Closed  
 December 27-29 ..... 9am-5pm  
 December 30-31..... Closed  
 January 1-2..... Closed

## what you'll find

- Treadmills, Ellipticals, Rowing Machine
- Recumbent Bikes
- Free Weights
- Dual-Station Strength Machines
- Lockers and Showers
- Equipment Orientation

## SilverSneakers

If your Medicare health plan, Medicare supplement carrier, or group retiree plan includes SilverSneakers as part of your benefit package, you can work out at no extra cost. Visit the Spring Avenue front desk to learn more.

# platform tennis center

845 PERSHING AVENUE, GLEN ELLYN (WITHIN MARYKNOLL PARK)



Open year-round, the Glen Ellyn Platform Tennis Center features six courts and modern Paddle Hut. A membership is required to use the facility, but non-members are welcome to sign up for private lessons and classes (when available). Platform tennis is the only racquet sport that players can enjoy outdoors in any climate. You don't need to have prior knowledge of the game as it's easy to learn.

## Membership Rates & Benefits

- No additional court fees to play year-round.
- Unlimited access to court time when not programmed with leagues, lessons or events.
- Access to the Paddle Hut between 7am and 11pm.
- Privilege of making court reservations 7 days in advance. Note: four courts are reserved for the Glen Ellyn Platform Travel Club on Tuesday, Wednesday, and Thursday evenings from October-March.
- Discount on lessons.

## 2022-2023 Membership

Valid September 1, 2022 to August 31, 2023

Type	Resident	Nonresident	Add'l Child
<b>Adult (18 and up)</b>	\$260	\$310	-
<b>Junior (6-17)</b>	\$50	\$75	-
<b>Family</b>	\$500	\$590	\$15/child

*Family includes 2 adults (same household) or 2 adults and 2 children (age 17 & under) per household. Youth members must be accompanied by an adult and do not receive a key to the Paddle Hut.*

[Purchase memberships online »](#)

## Private Lessons

Our Platform Tennis Professional, Mark Cunnington, can tailor lessons to your specific needs. Mark comes to the Park District highly skilled in the sport of platform tennis as well as tennis. USPTA and PPTA certified, Mark has over 10 years' experience in coaching platform tennis and is currently ranked in the top 40 in the nation. To get started, email at [gepaddlepro@gmail.com](mailto:gepaddlepro@gmail.com). Pricing below is listed per person; semi-private lessons are for two players.

Type	M/NM
<b>Private 30-Minute</b>	\$35/\$40
<b>Private 60-Minute</b>	\$70/\$80
<b>Semi-Private 30-Minute</b>	\$18/\$22
<b>Semi-Private 60-Minute</b>	\$35/\$40
<b>3 &amp; A Pro 30-Minute</b>	\$15/\$20
<b>3 &amp; A Pro 60-Minute</b>	\$25/\$30
<b>5 Private 60-Minute</b>	\$300/\$360



## \$5 Platform Tennis Clinics

Ages 6 and up

Learn the game of Platform Tennis and how to become involved in the program. Several of the area's top platform tennis professionals will be on hand to provide instruction on grips, rules, and strategies. Location: Platform Tennis Center. Min/Max: 1/20. (bt)

#/Link	Section	Day	Date	Time	R/NR
<a href="#">126570</a>	Juniors (6-17)	F	9/9	5-6pm	\$5 ●
<a href="#">126571</a>	Women	F	9/9	6-7pm	\$5 ●
<a href="#">126572</a>	Men	F	9/9	7-8pm	\$5 ●

## Quick Start Paddle

Ages 21 and up

This is a fun and dynamic crash course covering all the basics of Platform Tennis, including court positioning, stroke technique, screen play, communication, scoring, and rules of the game. Best for beginners and advanced beginners. Location: Platform Tennis Center. Min/Max: 4/12. (bt)

#/Link	Section	Day	Date	Time	R/NR
<a href="#">126644</a>	Women	M	9/26-10/24	5-6pm	\$125/\$150 ●
<a href="#">126643</a>	Men	Tu	9/27-10/25	5-6pm	\$125/\$150 ●
<a href="#">127214</a>	Women	Tu	9/27-10/25	10:30-11:30am	\$125/\$150 ●

## Youth Paddle

Ages 6-14

Kids will learn skills and drills and play games in this instructional class with Coach Cunningham, our Platform Tennis Pro. They'll be having such a great time, they might not even realize they're in an instructional class designed to develop their racquet skills and learn the sport. Location: Platform Tennis Center. Min/Max: 8/16. (bt)

#/Link	Age	Day	Date	Time	R/NR
<a href="#">126637</a>	6-10	M	10/17-11/14	4-5pm	\$125 ●
<a href="#">126638</a>	11-14	Tu	10/18-11/15	4-5pm	\$125 ●

## Monday Fall Co-Rec In-House League

Ages 21 and up

This popular league is open to Glen Ellyn Platform Tennis Center members only and is designed to help introduce new players to the game and enhance the experience for advanced beginners. Sign up is first come, first served. Players will be ranked by the Platform Tennis Pro and placed on teams. All games are played on platform tennis courts at Maryknoll Park. Email [gepaddlepro@gmail.com](mailto:gepaddlepro@gmail.com) for more information. Location: Platform Tennis Center. Min/Max: 16/84. (bt)

Register by 9/26

#/Link	Day	Date	Time	R/NR
<a href="#">126738</a>	M	10/3-12/5	7-10pm	\$90/\$115 ●

## Wednesday Fall In-House Women's League

Ages 21 and up

This league is geared towards female players. Members will be evaluated by our Platform Pro and placed on teams. Teams will play a weekly match on our courts with other Glen Ellyn Park District Paddle Members. Must hold a Glen Ellyn Platform Tennis Membership to play in this league. Contact Platform Tennis Pro Mark Cunningham at [gepaddlepro@gmail.com](mailto:gepaddlepro@gmail.com) for more information. Location: Platform Tennis Center. Min/Max: 16/40. (bt)

Register by 9/26

#/Link	Day	Date	Time	R/NR
<a href="#">126739</a>	W	10/5-12/7	5-6:30pm	\$90/\$115 ●

## Men's and Women's Travel League

The Glen Ellyn Park District works in conjunction with the Glen Ellyn Platform Tennis Club (GEPTC) to provide travel leagues. The GEPTC Men's Travel program has many teams playing in various levels (series) of play. These teams participate in the Chicago Platform Tennis Charities and Southwest leagues. Teams travel to other communities, as well as hosting home matches in the evenings. The Women's Travel league participates in the North Shore and Southwest leagues and travels during the day. Please contact Mark Cunningham at [gepaddlepro@gmail.com](mailto:gepaddlepro@gmail.com) for more information. All travel members must also hold a Glen Ellyn Park District Platform Membership.





# Healthier Makes **Happier.**

Caring for your family is an adventure - one filled with extraordinary joys and unexpected challenges. At Duly, our providers aren't satisfied simply treating symptoms - we believe you deserve a life-long partner in health, equipped with the tools, expertise and support you need to help your family flourish.

Learn More



**duly**  
HEALTH AND CARE

Begin your journey to a healthier, happier future at [dulyhealthandcare.com/community](https://dulyhealthandcare.com/community)



# rentals

Planning your next big event? We offer a wide variety of affordable indoor and outdoor venues. Deposits may be required with some rentals. Space is available on a first come, first served basis.



## Ackerman SFC

800 St. Charles Road, Glen Ellyn

Ackerman SFC has three full-size basketball courts, an indoor artificial turf field, and four batting cages available to rent for practices, games, parties and more. The facility also features an outdoor sand volleyball court and outdoor turf field. **Contact:** Brad Thomas at (630) 317-0134 for general rentals and Stacey Lim (630) 942-7275 for parties.



## Athletic Fields

The Glen Ellyn Park District has fields available for soccer, baseball or softball: Ackerman Park, 800 St. Charles Road; Village Green, 130 S. Lambert Road; or Newton Park, 707 Fairview Avenue.

### Village Green & Newton Parks:

(630) 942-7290

### Ackerman Park:

Grass Fields: (630) 317-0134

Synthetic Turf Field: (630) 317-0134



## Spring Avenue Recreation Center

185 Spring Avenue, Glen Ellyn

Spring Avenue Recreation Center can accommodate a variety of events. A single classroom (up to 30 people) or the craft lab (up to 50 people) are available to rent. **Contact:** Jeannie Robinson at (630) 942-7267



## Main Street Recreation Center

501 Hill Avenue, Glen Ellyn

Conveniently located near downtown Glen Ellyn. Rent a single classroom (up to 30 people), double classroom (up to 50 people), or elementary-sized gymnasium. **Contact:** David MacDonald at (630) 942-7266



## Sunset Pool

483 Fairview Avenue, Glen Ellyn

Private pool rentals are perfect for picnics, neighborhood parties, birthdays, group outings, and more. The pool is available to rent on Friday and Saturday evenings from early June through late August. **Contact:** Stacey Lim at (630) 942-7275



## Maryknoll Clubhouse Party Room

845 Pershing Avenue, Glen Ellyn

Enjoy a gathering with friends, family and co-workers. Room rental includes tables and chairs. Renter may bring in own food, and alcohol is permitted with a liability contract. Maximum number of guests is 50. Room size is 25' x 40'.

## Maryknoll Park Pavilion & Shelter

845 Pershing Avenue, Glen Ellyn

Two covered outdoor venues are available to rent. Each can accommodate up to 50 guests. Renters receive special discounts on splash park entry and/or rounds of mini golf.

## Maryknoll Splash Park

845 Pershing Avenue, Glen Ellyn

Rental includes private use of the splash park outside of normal business hours.

**Contact:** Stacey Lim at (630) 942-7275 for Maryknoll Park rentals.



# Lake Ellyn Boathouse

645 Lenox Road, Glen Ellyn

Located just 25 miles from downtown Chicago, this unique landmark house was built in 1937 as a community facility and was fully restored to its historic beauty in 2016. Beautifully placed along Lake Ellyn, the Boathouse has been home to numerous wedding ceremonies, receptions, anniversary parties, birthdays, and more.

**NOW BOOKING**

Call Jeannie Robinson at (630) 942-7267 for more details.





## Glen Ellyn Park District

# scholarship program

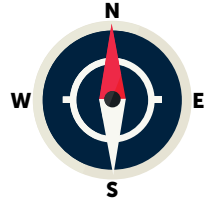
PARKS &  
ACTIVITIES  
FOR  
EVERYONE

The scholarship program is available to all Glen Ellyn Park District residents that qualify. Scholarship funds can be used for non-contractual camps and classes, pool passes, trips, preschool, fitness, athletics, etc., where fees are required. Funds are not eligible for equipment purchases or rental fees. Residents who qualify are eligible to receive up to \$400 maximum per person per calendar year (January 1-December 31) based on need and availability of funds.

Applicants must be able to provide proof of residency and income as defined on the application. Copies of the application are available at [gepark.org/financial-aid](http://gepark.org/financial-aid) or by visiting the Spring Avenue (185 Spring Avenue) or Main Street (501 Hill Avenue) Recreation Centers.

A completed application form along with copies of supporting documents must be returned in person or mailed to: Scholarship Program, Glen Ellyn Park District, 185 Spring Avenue, Glen Ellyn, IL 60137. Please allow up to 3 weeks for the application process. Applicants will be notified by letter or phone of the decision made concerning the scholarship. If you have further questions, call (630) 858-2462.

# explore *Your* parks



## parks

- 1 Greenbriar Park
- 2 Spalding Park
- 3 Churchill Park
- 4 Stacy Park
- 5 Ackerman Park
- 6 George Ball Park
- 7 Sam Perry Nature Preserve
- 8 Babcock Grove Park
- 9 Benjamin Gault Bird Sanctuary
- 10 Lake Ellyn Park
- 11 Ellynwood Nature Preserve
- 12 Walnut Glen Park
- 13 Frank Johnson Center
- 14 Danby Park
- 15 Prairie Path Park
- 16 Pfuetze Park
- 17 Glen Oak Park
- 18 Marie Ulhorn/President's Park
- 19 Newton Park
- 20 Sunset Park
- 21 Glen Ellyn Manor Park
- 22 Surrey Park
- 23 Maryknoll Park
- 24 Co-Op Park
- 25 Panfish Playground
- 26 Village Green Park
- 27 Lake Foxcroft Park



## facilities

- A** Ackerman Sports & Fitness Center
- B** Main Street Recreation Center
- C** Spring Avenue Recreation Center
- C** Spring Avenue Fitness Center
- C** Spring Avenue Dog Park
- D** Holes & Knolls Mini Golf + Splash Park
- D** Platform Tennis Facility
- E** Sunset Pool
- F** Lake Ellyn Boathouse

## schools

- G** Ben Franklin School
- H** Forest Glen School
- I** Churchill School
- J** Hadley Junior High
- K** Glenbard South
- L** Glenbard West
- M** Glen Crest
- N** Lincoln School
- O** Memorial Field
- P** Park View School







## park features

• Denotes also lined for Pickleball

		Walking Paths/Trail	Playground	Baseball/Softball Field	Basketball Court	Tennis Court (Hard Court)	Pickleball Court	Platform Tennis	Sand Volleyball Court	Synthetic Turf Athletic Field	Open Play Area/Grass Fields	Outdoor Fitness Equipment	Picnic Shelter	Outdoor Pool	Fishing Pier	Splash Park	Mini Golf	Disc Golf	Skate Park	Ice Skating	Sled Hill
<b>Ackerman Park</b>	800 St. Charles Rd.	•	•	•					•	•	•	•									
<b>Babcock Grove Park</b>	324 Linden St.		•								•										
<b>Churchill Park</b>	271 St. Charles Rd.	•											•								
<b>Co-Op Park</b>	515 Wilson Ave.		•								•										
<b>Danby Park</b>	280 Duane St.	•	•								•										
<b>Ellynwood Preserve</b>	801 Ellynwood Dr.																				
<b>Benjamin Gault</b>	625 N. Main St.	•																			
<b>George Ball Park</b>	801 Elm St.					•					•		•								
<b>Glen Ellyn Manor Park</b>	375 Illinois St.	•	•								•										
<b>Glen Oak Park</b>	350 Woodstock Ave.		•								•										
<b>Greenbriar Park</b>	430 Second Place Glendale Heights	•	•								•		•								
<b>Frank Johnson Center</b>	490 Kenilworth Ave.		•								•										
<b>Lake Ellyn Park</b>	645 Lenox Rd.	•	•								•				•						•
<b>Lake Foxcroft Park</b>	2S540 Lambert Rd.	•	•								•		•		•						•
<b>Main Street Rec. Ctr.</b>	501 Hill Ave.		•		•						•										
<b>Maryknoll Park</b>	845 Pershing Ave.	•	•					•			•		•			•	•	•			
<b>Newton Park</b>	707 Fairview Ave.	•	•	•	•	•				•	•		•						•	•	•
<b>Panfish Playground</b>	Maintained by GEPD		•								•										
<b>Sam Perry Preserve</b>	735 Grand Ave.																				
<b>Pfuetze Park</b>	400 N. Park Blvd.										•										
<b>Prairie Path Park</b>	565 Steward Ave.																				
<b>President's Park</b>	265 Cumnor		•								•										
<b>Spalding Park</b>	22W325 2nd St.		•								•		•								
<b>Spring Avenue Rec. Ctr.</b>	185 Spring Ave.										•										
<b>Stacy Park</b>	50 Geneva Rd.		•		•						•		•							•	
<b>Sunset Park</b>	483 Fairview Ave.		•			•					•			•							
<b>Surrey Park</b>	95 Surrey Dr.		•		•						•										
<b>Village Green Park</b>	130 S. Lambert Rd.		•	•	•	•	•				•		•			•					
<b>Walnut Glen Park</b>	860 Walnut St.		•																		

# The Fun Starts Here



## Community-Based Recreational Programs and Inclusion Services For Park District Programs

### WDSRA RECREATIONAL & SOCIAL PROGRAMS: IN-PERSON & VIRTUAL

WDSRA provides fun, engaging recreational and social programs, trips, and special events for children, teens, and adults with special needs. Programs are structured to allow everyone to participate at their own ability level. Through WDSRA each individual has the opportunity to grow personally, connect with their community and discover their potential.

- Sports
- Special Olympics
- Music and Dance
- Art and Drama
- Bowling
- Social Clubs
- Special Events
- Adaptive Sports
- Overnight Outings
- Weeklong Trips
- And much more!

### INCLUSION SERVICES

Inclusion Services are designed to provide the least restrictive environment while providing the maximum opportunity to participate in regular park programs. There is no charge for WDSRA support. To register for services, simply indicate that special accommodations are needed on the park district registration form. Two-week advance notice is requested for inclusion support.



### BE A PART OF THE FUN!

We are looking for people who are optimistic and enthusiastic. Flexibility. Training. Choice.



For details visit [www.wdsra.com](http://www.wdsra.com) - Join Our Team.

Western DuPage Special Recreation Association  
630-681-0962 • [www.wdsra.com](http://www.wdsra.com)



# district policies

## DEFINITION OF RESIDENCY

Not all Glen Ellyn residents are in the Park District. Anyone living within the geographic boundaries of the Glen Ellyn Park District is considered a resident. Glen Ellyn Park District residents, via property taxes, make financial contributions to the operation of the park system. Non-residents are charged higher fees for programs than residents to compensate for property tax disparity.

Residents of Glen Ellyn who are not residents of the Glen Ellyn Park District or any other park district may receive all the privileges of belonging to the Glen Ellyn Park District by paying the equivalent of Park District taxes annually. This membership allows for priority registration, pool passes, and any other services provided to our residents at the resident rate.

## WAIVERS OF LIABILITY

To participate in any Glen Ellyn Park District program, you must sign a waiver releasing the Park District of any liability.

## REFUNDS, CANCELLATIONS

The Glen Ellyn Park District reserves the right to cancel, postpone or combine classes, or change instructors. If insufficient enrollment causes a class to be canceled, notification will be given 7 days in advance, and full tuition refunded. Withdrawals prior to the start of a class will be assessed at minimum a \$5.00 service charge. Refunds for moving, injury/illness, or schedule changes will be pro-rated according to the date the request for a refund is made.

## COMMITMENT TO QUALITY

To encourage first time participation as well as repeat participation, the Park District has a refund policy highlighted by a satisfaction guarantee. This special refund policy provides us with timely feedback about dissatisfaction regarding our services. We can then take prompt action to improve services. If you are not completely satisfied, tell us and we will either: invite you to repeat the class at no charge; allow you a credit that can be applied to another program; issue you a full refund.

Our guarantee is based on fulfilling our promise to deliver the published expectations describing the service you have used. A refund will be granted if you were dissatisfied with the experience due to circumstances under the Park District's control.

Requests for the above-mentioned options must be made before the midpoint of the program or within two weeks of a single meeting activity. All refund requests must be submitted in writing and returned to the Spring Avenue Recreation Center or the Main Street Recreation Center. Satisfaction Guarantee does not apply to trips, special events with prepaid admissions and tickets, and athletic programs where equipment has already been ordered.

## FINANCIAL ASSISTANCE

The Glen Ellyn Park District recognizes there are community residents who may suffer economic setbacks that might preclude their participation in Glen Ellyn Park District programs. Financial assistance forms are available at the Spring Avenue and Main Street Recreation Center. All requests remain confidential. If you have questions, please call (630) 858-2462.

A referral for additional scholarship assistance is also available to qualified resident children under the age of 18 through the Milton Township Youth Committee's Family Youth Scholarship Fund.

## INSURANCE

The Glen Ellyn Park District does not provide medical insurance coverage for individuals who participate in our programs or use our facilities. To do so would make programs and user fees cost prohibitive.

## AMERICANS WITH DISABILITIES ACT

The Americans with Disabilities Act (ADA) prohibits discrimination on the basis of a disability. The Glen Ellyn Park District will make reasonable accommodations in recreation programs to enable participation by an individual with a disability that meets essential eligibility requirements for that leisure program and facility.

If you have questions or believe you have been unfairly discriminated against by the Park District, please contact Nick Cinquegrani at (630) 942-7257. Those who use the Telecommunications Device for the deaf may reach the Park District by calling the Illinois Relay Line at (800) 526-0844.

## NON-DISCRIMINATION STATEMENT

The Glen Ellyn Park District prohibits discrimination in all its programs and activities on the basis of race, color, national origin, gender, religion, age, disability, political beliefs, sexual orientation, marital or family status.

## BEHAVIOR POLICY

Participants are always expected to exhibit appropriate behavior. The following guidelines have been developed to help make Park District programs safe and enjoyable for all participants. Additional rules may be developed for specific programs and athletic leagues as deemed necessary by staff. Participants shall:

1. Show respect to all participants and staff, take direction from staff.
2. Refrain from using abusive or foul language.
3. Refrain from causing bodily harm to self, other participants or staff.
4. Show respect for equipment, supplies and facilities.

A positive approach will be used regarding discipline. Staff will periodically review rules with participants during the program session. If inappropriate behavior occurs, prompt resolution will be sought specific to each individual situation. The Park District reserves the right to dismiss a participant whose behavior endangers the safety of themselves or others.

## ADULT'S CODE OF ETHICS

- I will encourage good sportsmanship by demonstrating positive support for players, coaches, and officials at every game and practice.
- I will place the emotional and physical well-being of my child ahead of my personal desire to win.
- I will insist that my child play in a safe and healthy environment.
- I will require that my child's coach be trained in the responsibilities of being a youth sports coach.
- I will remember that the game is for youth – not adults.
- I will do my very best to make youth sports fun for my child.
- I will ask my child to treat other players, coaches, and officials with respect regardless of race, gender, creed, or ability.
- I agree with these rules and understand that the Glen Ellyn Park District Associations have adopted a Zero-Tolerance Policy and that not abiding by these rules may restrict me from attending future games and practices.

## PETS AT EVENTS

The Glen Ellyn Park District asks that everyone please exercise good judgment and leave pets at home when attending events that draw large crowds. Please show respect for other people, yourself and your pet by helping the Park District maintain a safe and healthy environment where all people have the opportunity to participate and enjoy themselves.

## NOTICE OF POSSIBLE CHANGES IN PLAYBOOK LISTINGS

The policies, procedures, requirements, programs, fees and facility availability contained in this Playbook represent Park District program and policies at the time of publication. Sometimes changes in the programs (including fees, locations, times, etc.) and policies are necessary after Playbook publication but prior to program commencement or facility operation.

To provide the best services, programs and facilities to the public, the Park District reserves the right to add, to change, modify or delete any program or policies after they have been published. The Park District will attempt to make a reasonable effort to give prompt public notice of any material changes in the programs and policies, but notice cannot be assured. We apologize for any inconvenience this may cause and appreciate your understanding and cooperation.

## PHOTO/VIDEO POLICY

The Glen Ellyn Park District uses pictures or videos of participants to publicize recreation opportunities in our social media, print, and online marketing. If you do not want a picture taken, please tell our photographer. If the picture has already been taken, please contact the Park District at (630) 942-7260.