

WINTER 2023

# playbook

Winter registration  
begins Saturday,  
December 3 *at* 9 am

## IN THIS ISSUE:

Ackerman Sports  
& Fitness Center p69

Polar Plaza p12

Special Events p07

*And much more!*



**GLEN ELLYN**  
PARK DISTRICT

   [gepark.org](http://gepark.org)



# what's inside



**Adult Interest .....33**  
Self defense, dance, tai chi, meditation, art, music, and more

**Active Older Adults & Seniors ...37**  
Luncheons, bingo, clubs, and more

**Capital Projects Update .....04**

**Dance .....62**

**Day Trips .....39**

**Directory .....03**

**Early Childhood Interest.....16**

**Events .....07**  
Community events, registered events, blood and food drives

**Fitness .....69**  
Ackerman SFC, Spring Avenue Fitness Center, personal training, sports training

**Gymnastics .....66**

**Nature .....41**  
MLK Day of Service, Sportswap, Nature Outings, Nature Walking Club, and more

**Outdoor Skating & Sledding .....12**

**Park Information ..... 80**

**Platform Tennis..... 74**

**Policies..... 83**

**Polar Plaza ..... 12**

**Preschool..... 13**

**Registration..... 03**

**Rentals..... 77**

**Scholarship Program ..... 79**

**School's Out Programs ..... 31**

**Sports ..... 45**  
Early childhood, youth/teen, and adult classes and leagues

**Spring Avenue Dog Park..... 40**

**Youth & Teen Interest ..... 20**

**WDSRA..... 82**

**new for winter**

- Polar Market
- MLK Day of Service
- Reptile Road Show & Dino Dig
- Woodland Valentine Hunt
- Paddles & Pours
- Tween Skate
- Adventure Trips
- Main Street Winter Break Camp
- Senior Mah-Jongg Club
- And so much more!

**MINIMUMS & MAXIMUMS**  
Each program and program session has a set minimum and maximum number of participants based on providing quality instruction, space availability, supplies, number of instructors, and other factors. For some programs, we may be able to accommodate the wait list or add an extra session, while we may not be able to do so for others. Programs not meeting the minimum registration may be canceled, and patrons will be notified.

## our mission

To foster diverse, community-based leisure opportunities, through a harmonious blend of quality recreation programs, facilities, and open space which will enhance the quality of life into the future.

## we're here to help!

Staff initials follow the program description for which they are responsible.

(bt)	Brad Thomas	<a href="mailto:bthomas@gepark.org">bthomas@gepark.org</a>
(cg)	Chris Gutmann	<a href="mailto:cgutmann@gepark.org">cgutmann@gepark.org</a>
(cb)	Clint Babicz	<a href="mailto:cbabicz@gepark.org">cbabicz@gepark.org</a>
(dt)	Dan Tripp	<a href="mailto:dtripp@gepark.org">dtripp@gepark.org</a>
(dm)	David MacDonald	<a href="mailto:dmacdonald@gepark.org">dmacdonald@gepark.org</a>
(gb)	Gabe Billings	<a href="mailto:gbillings@gepark.org">gbillings@gepark.org</a>
(jr)	Jeannie Robinson	<a href="mailto:jrobinson@gepark.org">jrobinson@gepark.org</a>
(ks)	Katy Speck	<a href="mailto:kspeck@gepark.org">kspeck@gepark.org</a>
(lb)	Laurie Bellmar	<a href="mailto:lbellmar@gepark.org">lbellmar@gepark.org</a>
(ls)	Lisa Semetko	<a href="mailto:lsemetko@gepark.org">lsemetko@gepark.org</a>
(rb)	Rebecca Brush	<a href="mailto:rbrush@gepark.org">rbrush@gepark.org</a>
(sl)	Stacey Lim	<a href="mailto:slim@gepark.org">slim@gepark.org</a>

Website .....	<a href="http://gepark.org">gepark.org</a>
Registration/General Questions .....	(630) 858-2462
Refund Requests .....	<a href="http://gepark.org/refund">gepark.org/refund</a>
Ackerman SFC Questions .....	(630) 317-0130
Closure/Cancellation Hotline .....	<a href="http://gepark.org/hotline">gepark.org/hotline</a>

## beginning of winter registration

### Residents (In District):

Saturday, December 3, 2022, at 9am

### Nonresidents (Out of District):

Saturday, December 10, 2022, at 9am

## how to register

### Online

Click the code number in the digital guide or visit [gepark.org/register](http://gepark.org/register). New users must create an account prior to registering online by clicking "Create an Account."

### Drop Off Form or Register in Person

Spring Avenue Recreation Center • 185 Spring Avenue  
Main Street Recreation Center • 501 Hill Avenue

**Monday-Thursday:** 8:30am-8pm

**Friday:** 8:30am-5pm

**Saturday:** 9am-12pm

**Sunday:** Closed

*Closed Nov. 24-25. Check our website for irregular hours and closures from Dec. 19-Jan. 2.*

### Mail/Fax

**Mail:** Glen Ellyn Park District, Registration, 185 Spring Avenue, Glen Ellyn, 60137

**Fax:** (630) 389-8527

## BOARD OF COMMISSIONERS

For the Board meeting schedule, visit:  
[gepark.org/board-meetings](http://gepark.org/board-meetings)

Alex Durham	President
Julia Nephew	Vice President
Kathy Cornell	Treasurer
Mary Crickmore	Commissioner
Ben Stortz	Commissioner
Michael Ward	Commissioner
Rob Weber	Commissioner

## UPCOMING PLAYBOOK & GUIDE RELEASE DATES

*The District reserves the right to change the release dates below.*

- **Spring 2023 Playbook:** January 25, 2023
- **Summer Camp Guide:** January 25, 2023
- **Summer 2023 Playbook:** April 26, 2023
- **Autumn 2023 Playbook:** July 19, 2023
- **Winter 2024 Playbook:** October 25, 2023



# Capital 22-23 Projects



For questions regarding these projects, please contact Nathan Troia, Superintendent of Planning and Natural Resources, at [ntroia@gepark.org](mailto:ntroia@gepark.org).

## Lake Ellyn Shoreline Pathway and Entry Gardens Completed

A new shoreline path extending from the Lake Ellyn Boathouse to the fishing pier was completed in September and is ready for Glen Ellyn residents and Lake Ellyn Park visitors to enjoy. Funded by an anonymous donation, the 12-foot-wide path features permeable pavers as well as sections of masonry seat wall and long-lasting products that align with the historical character of the park.

As part of this project, an entry garden was designed by Chicago-based Garden Design Consultant Austin Eischeid, who specializes in designing dynamic naturalistic plantings. A significant variety of native plants with year-round interest and bloom times was used to emphasize the entrance of the pathway and create a wandering garden experience from the Boathouse. The horticulture will also be used as a tool for outdoor education in Park District nature programs.

Improvements to the boat ramp north of the Boathouse have also been completed. Additional components to the project are expected to be done early next year. Those include path lighting as well as a rain garden, which is a depressed area with vegetation built to filter stormwater runoff, on the backside of the path.





## Village and Park District Partner to Improve Panfish Park, Develop Downtown Event Area and Open-Space Park

As part of the Village of Glen Ellyn and the Glen Ellyn Park District's collaboration to enhance and improve recreation opportunities within Glen Ellyn, a preliminary conceptual design to refurbish Panfish Park is underway. In response to community-driven feedback, the investment would improve the look and feel, increase amenities, and redevelop the playground.

The agreement is a component of the Village and Park District's partnership to purchase and develop the former US Bank property, located at 453 Forest Avenue in Downtown Glen Ellyn, into a multi-use event area and open-space park.

The scope of the Panfish Park enhancements includes renovating the playground area, improving the loop walking trail, introducing more natural areas and trees, removing invasive plants and dead trees, and adding new signage and site furniture.

The existing playground, previously installed in 1996, will be replaced with an ADA-accessible playground with fixtures geared toward children ages 2-5 and 5-12. An open-air shelter will also be built.

Minor realignments will be added to the loop walking trail and the hierarchy of the trails will be improved with an emphasis on the outer half-mile. Limestone will continue to be used primarily with concrete in key washout areas as needed. An overall natural area plan will be drafted that will include an interactive tree tour with signage installed on legacy trees throughout the park.



Renovations for Panfish Park are expected to start in late 2023 or 2024, with public engagement opportunities beginning next year.

The Park District's early conceptual plans to transform the former US Bank property are to include 9,000 square feet of greenspace and expand the existing Prairie Path Park into a dynamic open space within the heart of Glen Ellyn's Downtown. There is also potential for a permanent stage and support facility.

The site will create a "front yard" for commuters, Prairie Path users, Downtown residents, and the entire community. The project will fulfill an initiative driven by the Village's Downtown Plan and Comprehensive Plans, which call for the addition of green space within the Downtown area. The development of the site will also serve as a catalyst for improvements to adjacent properties and bring new events to the area. The project is expected to break ground in 2024 or 2025, depending upon the design, public engagement, and permit process.



## Newton Skate Park

Improvements to Newton Park Skate Park are underway. Demolition was completed in late August, followed by crack protection, asphalt and new color coating. The skate ramps are coming in mid-December and are expected to take only a few weeks to install. The skate park is closed while these improvements take place. These improvements are part of the overall Newton Park renovations, which are partially funded by the Illinois OSLAD Grant Program.

## George Ball Tennis Courts

In November, the asphalt surface on the tennis courts was renovated along with new nets and energy-efficient LED lighting. Half of the LED lighting costs were covered by a ComEd Energy Efficiency Grant. Pickleball lines were added to the three east courts. Color coating of the courts will be done in spring 2023. Temporary lines will be painted to allow play until the color coating occurs.

## Ackerman Park Fields 5 & 6

Softball fields 5 and 6 were not included in previous park improvements due to limited funding. Recently, the District received funding from the Illinois Department of Commerce & Economic Opportunity which will fund 80% of the improvements. Renovations will have similar elements to the softball hub, including black poly-coated dome backstops, premium infield mix, and resizing the infields to regulation standards.

## Sunset Playground

The Sunset Park playground was built in 1993 and is on the Playground Replacement Plan for Budget Year 2022. The District strives to be an eco-friendly leader. The replacement play equipment includes innovative ocean-recycled

materials. Demolition will start in winter and the new equipment will be replaced in the spring/summer 2023.

## Security Cameras

In summer 2022, security cameras were added to Lake Ellyn, giving 24/7 coverage and recording capabilities of the Boathouse and property. Cameras will be installed at Newton Park and Maryknoll Park starting in the winter 2022. Additional cameras will be added at other locations in 2023.

## Frank Johnson Center

The existing maintenance facility was built in the 1920s as an ice storage facility. The antiquated facility is well past its useful life and will be replaced. Construction will begin in summer 2023. This facility provides support for the Parks Department, which manages and cares for over 300 acres of property and all related park amenities, assets, and facilities. The new facility will be designed for efficient operations for many decades to come.

## Referendum Projects

The spring referendum passed receiving significant support from the community. The outcome was 63% in favor. Immediately after the election, the District initiated efforts to move forward with the included projects. This included finalizing the planning and construction consultants and organizing internal teams to assist the many projects while further developing the preliminary timelines that were presented during the referendum education effort. Additionally, the financial strategy was further refined and developed to maximize available funds. Planning is underway, and many of the projects will be starting construction as soon as 2024.





# community events

## Polar Market

All ages

Get in the holiday spirit at our inaugural Polar Market. Enjoy holiday shopping, carolers performing winter classics, ice skating (bring your own skates from home), and even visit with St. Nick himself.

Popcorn and hot chocolate will be available for purchase. (1s)

**Date:** Friday, November 25

**Time:** 2-5pm

**Location:** Polar Plaza

**R/NR:** Free

## Toys for Tots Toy Drive with Characters

All ages

Your favorite characters will be collecting new, unwrapped toys for children in need at Ackerman SFC. Bring a toy to donate for a chance to meet, interact, and take photos with superheroes, princesses, and more. Offered in partnership with League of Enchantment. (rb)

**Date:** Sunday, December 4

**Time:** 1-3pm

**Location:** Ackerman SFC

## Family Bingo Night

All ages

Spend an evening at Ackerman SFC packed with bingo, pizza, and prizes. We'll play several rounds starting at 5:30pm. Prizes, like gift cards and candy, will be awarded at the end of each round. Pre-registration is not required. Kids ages 15 and under must be accompanied by an adult. Drop in any time with the whole family and have some fun. (rb)

**Date:** Friday, December 16

**Time:** 5-7pm

**Location:** Ackerman SFC

**R/NR:** \$1 per card

WINTER 2023 • 7

● Registration open now ● Registration opens at 9am on December 3, 2022



## New Year's Burn

Ages 14 and up

Jumpstart your resolution and help make hunger history. Head to Ackerman SFC for a morning of calorie-burning group fitness classes. The "fee" to participate is a non-perishable food item (or toiletry) donation. Donations will benefit the Glen Ellyn Food Pantry. No registration required. (sl)

**Date:** Sunday, January 1

**Time:** 8-11am

**Location:** Ackerman SFC

## Free Week at Ackerman SFC

**January 2 to January 8**

Jumpstart your new year during Free Week at Ackerman SFC from January 2-8. We're waiving the drop-in fee for the fitness center and group fitness classes to help you achieve your wellness goals. Simply stop by the Ackerman SFC front desk during Free Week to take advantage of this special opportunity. (bt)



## Holiday Light Recycling *Free!*

Think green! Before tossing those broken light strands in the trash and adding to the landfill, consider recycling them instead! Collection bins are available through January 15.

### COLLECTION SITES

- Ackerman Sports & Fitness Center  
800 St. Charles Road
- Spring Avenue Recreation Center  
185 Spring Avenue
- Main Street Recreation Center  
501 Hill Avenue

### ACCEPTED ITEMS

- Mini lights
- C7 lights
- C9 lights
- Rope lights
- LED lights
- Extension cords



## Sportswap

All ages

Give and get gently used sports equipment at our spring Sportswap event with Go Green Glen Ellyn. Gear up for spring sports and activities at this community exchange. Equipment will be collected the preceding week. Watch [gopark.org](http://gopark.org) and [gogreenglenellyn.org](http://gogreenglenellyn.org) for details. Location: Ackerman SFC. (lb)

**Date:** Sunday, March 12

**Time:** 12-2pm

**Location:** Ackerman SFC



# registered events

Most events have a set minimum and maximum number of participants based on providing a quality experience, space availability, number of instructors/staff/volunteers, supplies, and other factors. Events may reach the maximum prior to the registration deadline, if indicated. For some programs, the District may be able to accommodate the wait list or add an extra session, while we may not be able to do so for others.

## FRIENDS OF GLEN ELLYN PARKS

### Naperville Trolley Holiday Lights Tour

All ages

Add this amazing trolley tour through Naperville's holiday lights into the hustle and bustle of this holiday season. Registration includes a hot or cold beverage of choice (adult beverages included), made and served by Le Chocolat du Bouchard's holiday elves.

Guests return to Le Chocolat du Bouchard to enjoy 20% off all retail goodies and are welcome to stay for a nightcap (post-drinks are not included in ticket price). All children on the nice list will be sent home with a delicious goody bag. Proceeds benefit the Friends of Glen Ellyn Parks' Scholarship Fund.

**Date:** Tuesday, December 13

**Time:** 7:15-9:30pm (Trolley 8-9pm)

**R/NR:** \$30 per person

**Register at:** <https://gepark.ejoinme.org/trolley> ●



### Sports and Fun with Santa

Ages 3-12

Santa Claus and his elves are taking a sleigh ride break! Team up with Santa's crew for some festive games, activities, and sports. Later, enjoy some pizza and water. It'll be a jolly good time. Min/Max 20/100. (rb)

#/Link	Day	Date	Time	R/NR
<a href="#">127167</a>	Sa	12/17	10am-12pm	\$20/\$30 ●

### Martin Luther King, Jr. Day of Service *Free!*

**Volunteer Opportunity**

All ages

Honor the legacy of Dr. King by participating in a day of service. Start the day with coffee and hot chocolate. Volunteers will cut and remove invasive brush, improving the quality of our natural areas. Dress in warm layers. We will have work gloves and tools to loan. Finish the day with a nature walk and snack. Under age 14 must be accompanied by an adult. Location: Ackerman Woods. Min/Max: 4/20. (lb)

#/Link	Day	Date	Time	R/NR
<a href="#">127753</a>	M	1/16	9:30-11:30am	Free w/registration ●



## Frozen Fest *Free!*

All ages

Meet and greet your favorite Frozen characters. Hot cocoa, coffee, cookies, and a photo opportunity with the characters will be available. Learn to skate lessons will be provided by Center Ice of DuPage for registered participants 4 years of age and older. Bring your own ice skates from home. Frozen Fest is free, but registration is required for both adults and children. This is not a drop-off activity; adults must accompany children. Location: Polar Plaza. Min/Max: 25/225. (Is)

#/Link	Day	Date	Time	R/NR
<a href="#">127234</a>	Sa	1/14	10am-12pm	Free w/registration •

## Daddy Daughter Dance

Ages 3-11 with adult

You're cordially invited! This sweet, Valentine's themed occasion is filled with music (thanks to a DJ), dancing, laughing, and making your own ice cream sundaes. Dress up and enjoy a magical evening creating everlasting memories. Though the dance is primarily attended by dads and daughters, moms, sons, and other special adults are welcome to get in on the fun.

Fee is per person. Every adult and child attending must register. All children must be accompanied by an adult. Location: Abington Banquets. Min/Max: 50/450. (ks)

#/Link	Day	Date	Time	R/NR
<a href="#">127262</a>	F	2/3	6:30-8:30pm	\$30/\$45 per person •

## Learn to Curl

Ages 8 and up

What is curling? Come out to the Polar Plaza in downtown Glen Ellyn and learn from the Windy City Curling Club. You will learn how to throw a stone, sweep the ice, and basic strategy to get you started. Curling is fun for all ages and no experience or skates required. There is a maximum of 8 participants per time slot. Fee is per person. Location: Polar Plaza. (Is)

#/Link	Day	Date	Time	R/NR
<a href="#">127238</a>	Sa	12/10	12:15-1pm	\$20 •
<a href="#">127239</a>	Sa	12/10	1-1:45pm	\$20 •
<a href="#">127240</a>	Sa	12/10	1:45-2:30pm	\$20 •
<a href="#">127241</a>	Sa	12/10	2:30-3:15pm	\$20 •
<a href="#">127242</a>	Sa	12/10	3:15-4pm	\$20 •



## Bags and Brews Tournament

Ages 21 and up

Face off in a good old-fashioned cornhole competition. Teams will consist of two players and will participate in a double-elimination tournament. Each team receives a swag bag full of cool stuff. One person will register as the team captain. Tournament rules, bracket, and waiver forms will be emailed to the team captains prior to the event. Craft beer from Two Hound Red and food will be available for purchase at an additional cost. Location: Ackerman SFC. Max 10/30. (bt)

#/Link	Day	Date	Time	R/NR
<a href="#">127803</a>	F	2/17	6-10pm	\$50/\$65 •

## Reptile Road Show and Dino Dig

Ages 4-10 with adult

On your day off from school come and learn about reptiles and your very own dino dig. JG's Reptile Road Show will bring exciting, educational, interactive, and hands-on experience with reptiles found all over the world. Following the reptile road show each participant will have the opportunity to become an archeologist and try to excavate a fossilized dino egg. Snacks and refreshments served. Location: Main Street Recreation Center. Min/Max: 50/100. (dm)

#/Link	Day	Date	Time	R/NR
<a href="#">127586</a>	M	2/20	2-4pm	\$15/\$25 •

# GLEN ELLYN Gives



## Blood Drives & Food Drives


We're hosting blood drives and drive-thru drop-off food drives at Ackerman SFC! Appointments are recommended for the blood drives but walkups are welcome. To donate nonperishable food items and toiletries to Glen Ellyn Food Pantry, just pull up to the main entrance and we'll do the rest.

Type	Date	Donation Window	Blood Donation Appointment Link
Blood Drive	Wednesday, December 21	9am to 3pm	<a href="#">Schedule »</a> •
Blood & Food Drive	Thursday, January 19	9am to 3pm	<a href="#">Schedule »</a> •
Blood & Food Drive	Thursday, February 23	9am to 3pm	<a href="#">Schedule »</a> •
Blood & Food Drive	Tuesday, March 28	9am to 3pm	<a href="#">Schedule »</a> •

*The blood drives are offered in partnership with State Representative Terra Costa Howard and Kiwanis Club of Glen Ellyn.*

# outdoor skating sledding, & curling

Head to the “coolest” spots in town! Skating and sledding opportunities are unsupervised and at your own risk. Skate rentals are not available.



Check the hotline to see if ice is safe for skating.

## natural ice rinks

### LAKE ELLYN AND NEWTON PARK

Each winter in Glen Ellyn is unique and there is no guarantee that weather will allow for safe skating on Lake Ellyn or to make ice at Newton Park.

The best way to stay up to date on the status of the rinks is to sign up for alerts through the Park District hotline at [gepark.org/hotline](http://gepark.org/hotline).

- Lake Ellyn, 645 Lenox Road
- Newton Park, 707 Fairview Avenue  
*Rink is located on the tennis courts*

Visit [gepark.org/skating](http://gepark.org/skating) to learn more about these rinks.

## sledding

### NEWTON PARK

The Park District has designated a sled hill located at Newton Park, 707 Fairview Avenue. No other hills are maintained for sledding. Sledding is allowed only during daylight hours from dawn until dusk. Users are responsible for determining if the conditions are appropriate for sledding. Learn more at: [gepark.org/sledding](http://gepark.org/sledding)

## polar plaza

The Park District, in a partnership with the Village of Glen Ellyn, is excited to once again offer the Polar Plaza synthetic ice skating rink and curling lanes in downtown Glen Ellyn this season. The Polar Plaza occupies a portion of the Village’s Crescent parking lot, just west of Main Street. For more information, including rules and regulations, please visit: [gepark.org/polarplaza](http://gepark.org/polarplaza)

### SYNTHETIC ICE RINK

Free to residents and visitors to the area, the Polar Plaza synthetic surface replicates a regular ice surface. Visitors must bring their own skates as rentals are not available (street shoes are not allowed on the skating surface). Skating hours are noon to 9pm daily beginning Friday, November 25 through Tuesday, February 14.

### CURLING LANES

Try the Winter Olympic sport of curling! Two iceless curling lanes will be available from Friday, December 2 through Sunday, February 12. Visitors can play up to 40-minutes using equipment checked out from the on-site curling shelter attendant. It’s free!

#### Regular Hours

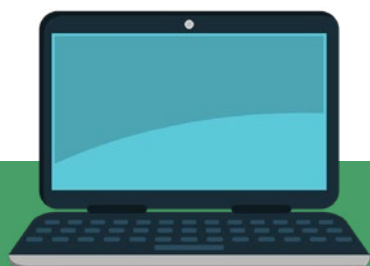
Friday: 4pm to 9pm  
Saturday: Noon to 9pm  
Sunday: Noon to 7pm

#### Special Hours

December 24: 10am-2pm  
December 25: Closed  
December 31: 10am-2pm  
January 1: Closed



# preschool 2023-2024 School Year



## Preschool Open House

Register to attend an Open House to visit classrooms, meet teachers, and ask questions. Time slots are available on the days/hours below. Children are welcome to attend with parents. Email [jrobinson@gepark.org](mailto:jrobinson@gepark.org) for more information.

**Main Street  
Recreation Center**  
February 1, 6-7:30pm  
February 4, 9:30-11am  
[Register »](#)

**Spring Avenue  
Recreation Center**  
January 31, 6-7:30pm  
February 4, 11:30am-1pm  
[Register »](#)

At our Preschool, children learn through an academic and play-based curriculum to facilitate learning concepts including writing, science, vocabulary, numbers, shapes, math, and other cognitive abilities. Program activities serve many developmental purposes; participants learn problem-solving skills and how to sort out and organize new ideas. They develop an understanding of social awareness, and investigate and experiment with new possibilities. The academics incorporated into the program will ensure students are prepared to move to the next level and eventually be Kindergarten-ready.

Our program is a mixture of teacher-guided activities and playtime, with small and large group activities based around a weekly theme. Children engage in fine and large motor skill activities, art projects, music, books, dramatic play, cooking, writing and more. Children also have monthly visits from B#Sharp Music for Children and the Park District Environmental Outreach Educator. Please contact Jeannie Robinson at (630) 942-7267 or [jrobinson@gepark.org](mailto:jrobinson@gepark.org) with questions.

## Preschool Programs & Requirements

### 2-YEAR-OLDS:

**Children must be 2 as of Mar. 15, 2023 for the Monday-Thursday classes or as of June 15, 2023 for the Friday class**

Geared toward having a successful first school-away-from-caregiver experience while preparing for the three-year-old program. Emphasis is placed on socialization skills and introduction to a structured class. In case of potty accidents, caregivers will be notified.

### 3-YEAR-OLDS:

**Children must be 3 as of Sept. 1, 2023**

Geared toward having a successful first school experience. Emphasis is placed on social skills, fine motor skills, shapes, colors,

name recognition, following direction, sharing and play. Must be able to use the restroom independently.

### 4-YEAR-OLDS/PRE-K:

**Children must be 4 as of Sept. 1, 2023**

Designed for developing readiness and success in kindergarten. Emphasis is placed on the development of academic skills through structured activities, including math concepts, lower/upper case letters, letter sound recognition, writing/sight words, and developing independence. Classes may also include students age 5 that are not yet ready for kindergarten in the fall.

# Registration

## Priority Registration

Priority registration for returning participants will take place in January. Notifications regarding registration will be sent to current participants following winter break.

## Open Registration

Registration for new families will begin February 6. New families registering for the Preschool Program may do so online at [gepark.org/register](http://gepark.org/register), or in person at the Spring Avenue or Main Street Recreation Centers. Adults must submit a copy of their child's birth certificate when registering in person. If registering online, birth certificates can be submitted to the office or by email to [jrobinson@gepark.org](mailto:jrobinson@gepark.org) by March 31, 2023. If a copy of your child's

birth certificate is not received by March 31, your spot in the selected class may be forfeited.

## Schedule

The 2023-2024 preschool year begins the week of September 5, 2023, and concludes the week of May 13, 2024. Classes will not meet on legal public holidays as determined by the District 41 school calendar. There may be additional dates, which will be stated in your Glen Ellyn Park District Preschool Calendar.

## Payment

Preschool uses automatic billing/payments. A nonrefundable commitment fee of \$75 will be required upon registration. The yearly class fee listed is divided into six equal amounts charged to your credit card each month July-December. You may also pay for the entire year at registration.

Class	Location	Room	Days/Dates	Time	R/NR Annual or Installment Fees	#/Link
<b>2-Year-Old</b> as of 6/15/22	Spring Avenue	Multi B	Fridays, Sept. 15-May 17	9-11am	\$660/\$792 annually or \$110/\$132 six installments	<a href="#">127817</a>
<b>2-Year-Old</b> as of 3/15/22	Spring Avenue	Multi B	M/W, Sept. 11-May 15	9-11am	\$1,320/\$1,584 annually or \$220/\$264 six installments	<a href="#">127818</a>
<b>2-Year-Old</b> as of 3/15/22	Spring Avenue	Multi B	Tu/Th, Sept. 12-May 16	9-11am	\$1,320/\$1,584 annually or \$220/\$264 six installments	<a href="#">127819</a>
<b>3-Year-Old</b>	Main Street	Room 106	Tu/W/Th, Sept. 5-May 16	12:15-2:45pm	\$2,079/\$2,496 annually or \$346.50/\$416 six installments	<a href="#">127820</a>
<b>3-Year-Old</b>	Spring Avenue	Preschool Room	M/W/F, Sept. 6-May 17	8:45-11:15am	\$2,079/\$2,496 annually or \$346.50/\$416 six installments	<a href="#">127821</a>
<b>3-Year-Old</b>	Spring Avenue	Preschool Room	Tu/Th, Sept. 5-May 16	8:45-11:15am	\$1,386/\$1,662 annually or \$231/\$277 six installments	<a href="#">127822</a>
<b>3-Year-Old</b>	Main Street	Room 204	Tu/Th, Sept. 5-May 16	8:45-11:15am	\$1,386/\$1,662 annually or \$231/\$277 six installments	<a href="#">127823</a>
<b>3-Year-Old</b>	Main Street	Room 204	M/W/F, Sept. 6-May 17	8:45-11:15am	\$2,079/\$2,496 annually or \$346.50/\$416 six installments	<a href="#">127824</a>
<b>4-Year/Pre-K</b>	Main Street	Room 114	M-Th, Sept. 5-May 16	8:45-11:15am	\$2,904/\$3,486 annually or \$484/\$581 six installments	<a href="#">127825</a>
<b>4-Year/Pre-K</b>	Main Street	Room 204	M-Th, Sept. 5-May 16	12:15-2:45pm	\$2,904/\$3,486 annually or \$484/\$581 six installments	<a href="#">127826</a>
<b>4-Year/Pre-K</b>	Spring Avenue	Preschool Room	M-Th, Sept. 5-May 16	12:15-2:45pm	\$2,904/\$3,486 annually or \$484/\$581 six installments	<a href="#">127827</a>
<b>4-Year/Pre-K</b>	Main Street	Room 106	M-F, Sept. 6-May 12	8:45-11:15am	\$3,630/\$4,356 annually or \$605/\$726 six installments	<a href="#">127828</a>





## Preschool Playtime After School Program

Ages 3-4

This structured after school playtime program at Main Street Recreation Center (Room 114) includes free play, crafts, games, and gym time for your little one to further explore school. Register from one to four days per week for the full school year. Billing is on a monthly basis, beginning September 1. Space is limited per day. Please choose your day(s) upon registration.

Priority registration for Preschool Playtime will take place for current families in January. Registration forms are available at Spring Avenue or Main Street Recreation Centers, or by emailing [jrobinson@gepark.org](mailto:jrobinson@gepark.org). Registration for new families will open February 6 and may also be completed online. Min/Max: 8/14. (jr)

### Full School Year (32 Weeks)

R/NR-\$576/\$696 (\$72/\$87 monthly)

#/Link	Day	Date	Time
<a href="#">127813</a>	M	Sept. 11-May 13	11:45am-2:15pm
<a href="#">127814</a>	Tu	Sept. 12-May 14	11:45am-2:15pm
<a href="#">127815</a>	W	Sept. 13-May 15	11:45am-2:15pm
<a href="#">127816</a>	Th	Sept. 14-May 16	11:45am-2:15pm

## Coming Soon: Little Scholars Preschool Enrichment

New for the 2023-2024 school year, supplemental early childhood enrichment programs will be available for students to learn new skills and build independence through age appropriate activities. Families can choose from programs that will feature the arts, language, physical education, science, and more! Look for more details in the Spring Playbook.

## Kindergarten Enrichment

Ages: 5-6 (must be born by September 1, 2018, and enrolled in kindergarten)

The Glen Ellyn Park District offers a quality enrichment experience for kindergarten-age children attending half-day Kindergarten. This popular program, held at Main Street Recreation Center (Room 304), is designed to enrich and enhance the regular district Kindergarten program in the areas of motor skills, language arts, music, and creative arts. The goal is to allow each child to mature academically and socially in a creative, encouraging, and challenging learning environment.

Classes offer a balance of both structured and unstructured activities. Activity areas to choose from include blocks, quiet time, dramatic play, small and large motor activities as well as areas for music, art, literacy, and science/discovery. We will provide a space for kids to eat lunch after (AM) or prior (PM) to KE. Please send a sack lunch if you plan to have your child eat lunch at KE.

Priority registration for Kindergarten Enrichment will take place for current families in January. Registration for new families will open February 6 and may also be completed online. Min/Max: 8/12. (jr)

**Two Days R/NR**-\$1,782/\$2,136 annually or \$297/\$356 six installments plus a separate \$75 nonrefundable deposit.

**Three Days R/NR**-\$2,673/\$3,210 annually or \$445.50/\$535 six installments plus a separate \$75 nonrefundable deposit.

#/Link	Day	Date	Time
<a href="#">127831</a>	Tu & Th	Sept. 5-May 16	8:45-11:30am
<a href="#">127832</a>	Tu & Th	Sept. 5-May 16	12:30-3:15pm
<a href="#">127829</a>	M/W/F	Sept. 6-May 17	8:45-11:30am
<a href="#">127830</a>	M & W	Sept. 6-May 15	12:30-3:15pm



# early childhood interest

**who to contact:**

(dm) David MacDonald, [dmacdonald@gepark.org](mailto:dmacdonald@gepark.org)

(ks) Katy Speck, [kspeck@gepark.org](mailto:kspeck@gepark.org)

(lb) Laurie Bellmar, [lbellmar@gepark.org](mailto:lbellmar@gepark.org)



WINTER 2023 • 16







## Preschool Nature Outings

Ages 2-5 with adult

Explore nature this winter. Each class will feature a different topic supported by a story, craft/project, and an easy exploratory hike. Min/Max: 4/12. (1b)

#/Link	Day	Date	Time	R/NR
<i>Over and Under the Snow at Maryknoll Park</i>				
<a href="#">127735</a>	F	1/6	10-11am	\$10/\$15 ●
<i>Woodpeckers at Churchill Park</i>				
<a href="#">127736</a>	F	1/20	10-11am	\$10/\$15 ●
<i>Groundhog Day at Ackerman Woods</i>				
<a href="#">127737</a>	F	2/3	10-11am	\$10/\$15 ●
<i>Coyotes at Ackerman Woods</i>				
<a href="#">127738</a>	F	2/17	10-11am	\$10/\$15 ●
<i>Salamanders at Churchill Park</i>				
<a href="#">127739</a>	F	3/3	10-11am	\$10/\$15 ●
<i>Maple Syrup at Lake Ellyn</i>				
<a href="#">127740</a>	F	3/17	10-11am	\$10/\$15 ●

## Woodland Valentine Hunt

All ages

We are giving animals some love this Valentine's Day. Follow the trail to find valentines to all the woodland animals. Follow clues to a hidden treat to leave for the wildlife, then find a valentine prize for you! Fee is per child. Adult accompaniment is required, as this is self-guided. Location: Churchill Park. Min/Max: 10/70. (1b)

#/Link	Day	Date	Time	R/NR
<a href="#">127759</a>	Sa	2/18	1-2pm	\$10/\$15 ●

## MUSICREATORS

### Play Musical Instruments with Me

Ages 1-4 with adult

Share in a music class that will help your child develop confidence and social skills while sharing in activities that will improve memory skills, literacy development, and listening skills. Children will be introduced to many new instruments such as triangles, guiros, woodblocks, tambourines, and drums to teach musical skills. Using scarves, hoops, and stick ponies, you will move with your child enjoying music time together improving gross and fine motor coordination. Every session is filled with new songs and activities. Location: Main Street Recreation Center. Min/Max: 5/13. No class 1/31. (ks)

#/Link	Day	Date	Time	R/NR
<a href="#">127276</a>	Tu	1/10-2/14	9:45-10:15am	\$72/\$86 ●
<a href="#">127277</a>	Tu	1/10-2/14	10:30-11am	\$72/\$86 ●
<a href="#">127278</a>	Tu	2/21-3/21	9:45-10:15am	\$72/\$86 ●
<a href="#">127279</a>	Tu	2/21-3/21	10:30-11am	\$72/\$86 ●

## MUSICREATORS

### Songs of The Season

Ages 3-5 with adult

Nurture growing independence through singing, instrument playing, chants and rhymes, listening activities, group dancing, literature, and stories that are creatively brought to life on xylophones and percussion instruments. Musical concepts (tempo, dynamics, and steady beat) are taught through songs, stories, movement, and instrumentation activities that are hands-on and centered on the current season, outdoor fun, and nature. Location: Main Street Recreation Center. Min/Max: 5/12. No class 1/31. (ks)

#/Link	Day	Date	Time	R/NR
<a href="#">127280</a>	Tu	1/10-2/14	11:15-11:55am	\$80/\$96 ●
<a href="#">127281</a>	Tu	2/21-3/21	11:15-11:55am	\$80/\$96 ●

## WEE HEART MUSIC

**Music Together Family Classes**

Ages 5 and under with adult

Enjoy eight weeks of music, movement, learning, and growth as you sing, dance, and play musically together. Each semester introduces a new song collection. Tuition includes materials for at home listening and play. There is a \$50 discount for the second child. Location: Main Street Recreation Center. Min/Max: 5/12. (ks)

#/Link	Day	Date	Time	R/NR	
<a href="#">127263</a>	M	1/23-3/13	9:15-10am	\$189/\$227	●
<a href="#">127264</a>	M	1/23-3/13	10:15-11am	\$189/\$227	●
<a href="#">127265</a>	M	1/23-3/13	11:15am-12pm	\$189/\$227	●
<a href="#">127266</a>	Th	1/26-3/16	9:15-10am	\$189/\$227	●
<a href="#">127267</a>	Th	1/26-3/16	10:15-11am	\$189/\$227	●
<a href="#">127268</a>	Sa	1/28-3/18	9:15-10am	\$189/\$227	●
<a href="#">127269</a>	Sa	1/28-3/18	10:15-11am	\$189/\$227	●

## ROCK N' KIDS

**Tot & Kid Rock**

Ages 1-6 with adult

This interactive class has everyone on their feet. We all learn together while engaging in fun, creative, music-based activities, while using rhythm instruments and movement props. Activities are age appropriate by class and include songs and rhymes, rhythm and coordination, fine and gross motor, imagination and sensory, listening and following directions skills. All children must be accompanied by an adult. Location: Main Street Recreation Center. Min/Max: 4/15. (ks)

#/Link	Day	Date	Time	R/NR	
<b>Tot Rock: Ages 12-23 months</b>					
<a href="#">127270</a>	F	1/13-2/10	9:30-10:10am	\$75/\$94	●
<a href="#">127271</a>	F	2/24-3/24	9:30-10:10am	\$75/\$94	●
<b>Kid Rock I: Ages 2-3</b>					
<a href="#">127272</a>	F	1/13-2/10	10:15-10:55am	\$75/\$94	●
<a href="#">127273</a>	F	2/24-3/24	10:15-10:55am	\$75/\$94	●
<b>Kid Rock III: Ages 1-6</b>					
<a href="#">127274</a>	F	1/13-2/10	11-11:40am	\$75/\$94	●
<a href="#">127275</a>	F	2/24-3/24	11-11:40am	\$75/\$94	●

## SHINING STAR PRODUCTIONS

**Little Actors Club**

Ages 3-6

Children love this innovative drama class that develops their imagination and introduces little actors to the performing arts in a fun and creative atmosphere. Each week is an exciting adventure into the imagination with changing themes, music, and games. Club members learn theatre terms and gain enhanced spontaneity, creativity, and self-esteem. Themes for upcoming classes will be announced on a weekly basis. Most themes are not repeated for two years. Location: Main Street Recreation Center. Min/Max: 6/14. (ks)

#/Link	Day	Date	Time	R/NR	
<a href="#">127282</a>	W	2/8-3/22	5:30-6:15pm	\$73/\$88	●

**Safe Kids**

Ages 3-6

This interactive class focuses on thinking safely and making safe choices in and around the home. Kids learn what to do in an emergency, when to call 911, and how to deal with strangers. Each child receives a safety packet to take home. Location: Spring Avenue Recreation Center. Min/Max: 6/10. (dm)

#/Link	Day	Date	Time	R/NR	
<a href="#">127294</a>	Tu	1/10	4-5pm	\$25/\$37	●
<a href="#">127509</a>	Tu	2/21	4-5pm	\$25/\$37	●

**Safe Kids with First Aid**

Ages 3-6

Safety and first aid go hand in hand. Children learn simple rules to think safely and make safe choices at home and away. We also present basic first aid information, including treatment of small cuts, bumps and bruises, nosebleeds, minor burns, and more. Each child receives a safety packet and creates a small first aid kit to take home. Location: Spring Avenue Recreation Center. Min/Max: 6/10. (dm)

#/Link	Day	Date	Time	R/NR	
<a href="#">127296</a>	W	1/11	4-5pm	\$25/\$37	●
<a href="#">127510</a>	W	2/22	4-5pm	\$25/\$37	●



**DISCOVERY LANGUAGE****Introduction to Spanish**

Ages 3-6

Discovery Language will introduce the Spanish language in a recreational and simple format. Students will be given an “ear” for pronunciation and build confidence in speaking and learning about another language. Students will learn “everyday” language via repetition, games, songs, and hands-on activities. Each class is progressive and adaptable according to the ability of the student. Students receive materials for them to keep. Location: Main Street Recreation Center. Min/Max: 5/12. No class 2/20. (dm)

#/Link	Day	Date	Time	R/NR
<a href="#">127292</a>	M	1/23-3/6	4:30-5:15pm	\$102/\$122 ●

**T-REXPLORERS****Dino Hour**

Ages 3-5 with adult

Bring your little one for an hour of dinosaur discovery fun. They will see real dinosaur fossils, listen to a story, make a craft to take home, and dig in the sand to assemble dinosaur puzzle pieces. Location: Main Street Recreation Center. Min/Max: 8/12. (dm)

#/Link	Day	Date	Time	R/NR
<a href="#">127476</a>	Sa	1/7	10-11am	\$40/\$57 ●
<a href="#">127477</a>	Sa	1/7	11:30am-12:30pm	\$40/\$57 ●
<a href="#">127478</a>	W	2/22	4:30-5:30pm	\$40/\$57 ●

**LITTLE MEDICAL SCHOOL****Little Nutrition School**

Ages 4-5

These future dieticians will learn about healthy eating habits, the food pyramid, and global foods through our nutrition workbook, Asha’s Magical Ride. Students will create tasty recipes and snack combinations. Location: Main Street Recreation Center. Min/Max: 8/16. (dm)

#/Link	Day	Date	Time	R/NR
<a href="#">127286</a>	Th	2/16-3/23	12:15-1:15pm	\$170/\$220 ●

**LITTLE MEDICAL SCHOOL****Little Doctor School**

Ages 4-5

Our youngest future doctors will use a real stethoscope and other medical instruments, learn how muscles and nerves work together, cast a broken bone, and learn how to properly scrub their hands before surgery. Location: Main Street Recreation Center. Min/Max: 8/16. (dm)

#/Link	Day	Date	Time	R/NR
<a href="#">127288</a>	Th	2/16-3/23	1:30-2:30pm	\$170/\$220 ●

**LITTLE MEDICAL SCHOOL****Little Veterinarian School – Dog**

Ages 4-5

After “adopting” their very own plush puppy, students will roleplay the key responsibilities of a veterinarian, including how to properly perform a nose-to-tail exam. These future veterinarians will learn how to sew stitches, remove ticks, make healthy treats, and vaccinate their dog. Location: Main Street Recreation Center. Min/Max: 8/16. (dm)

#/Link	Day	Date	Time	R/NR
<a href="#">127289</a>	Th	2/16-3/23	2:45-3:45pm	\$170/\$220 ●







# youth and teen interest

**who to contact:**

(dm) David MacDonald, [dmacdonald@gepark.org](mailto:dmacdonald@gepark.org)

(ks) Katy Speck, [kspeck@gepark.org](mailto:kspeck@gepark.org)

(lb) Laurie Bellmar, [lbellmar@gepark.org](mailto:lbellmar@gepark.org)

(ls) Lisa Semetko, [lsemetko@gepark.org](mailto:lsemetko@gepark.org)

(rb) Rebecca Brush, [rbrush@gepark.org](mailto:rbrush@gepark.org)







## Tween Night

Ages 8-12

Get out and have fun! Tweens will take over the gym and turf at Ackerman SFC for a night of sports, games, and other fun activities. We will have pizza for all participants. Adults must accompany their child for check-in and check-out. Location: Ackerman SFC. Min/Max 20/100. (rb)

#/Link	Day	Date	Time	R/NR
<a href="#">127166</a>	F	12/23	6-9pm	\$25/\$40 ●

## Tween Skate

Ages 9-12

Come chill out on the ice with your friends! Tweens will spend an evening playing games, skating, and then warming up with hot chocolate and pizza. Bring your own ice skates from home. Children must be accompanied by an adult for check-in and check-out. Location: Polar Plaza. Min/Max: 20/100. (ls)

#/Link	Day	Date	Time	R/NR
<a href="#">127734</a>	F	1/6	6-7:30pm	\$8/\$10 ●

## Kids' Night Out

Ages 5-12

Children will enjoy a night out with friends participating in games, sports drills, and arts & crafts all while supervised by the Ackerman SFC team. Participants will receive a treat and water. Adults must accompany their children for check-in and check-out. Location: Ackerman SFC. Min/Max: 10/25. (rb)

#/Link	Day	Date	Time	R/NR
<a href="#">127765</a>	F	3/17	6-8pm	\$25/\$35 ●

## DUNHAM WOODS FARM

### Horsemanship for Kids

Ages 10-17

Join in the fun with beginning riding lessons. Participants will explore the proper ways to groom, tack, and handle horses. In the saddle, you will learn the basics of riding at the walk and trot. Lessons will be held in our indoor arena during inclement weather. Make up class held at the end of the six weeks. First day of class is orientation and groundwork. Riders should wear jeans or Jodhpur pants and hard soled riding or hiking boots with a small, low heel. Must have an approved riding helmet or bicycle helmet to ride. Location: Dunham Woods Farm, Elgin. Min/Max: 1/3. (dm)

#/Link	Day	Date	Time	R/NR
<a href="#">127349</a>	Sa	1/21-2/25	1:30-2:30pm	\$195/\$250 ●

### Babysitting for Success

Ages 10-15

Be the best babysitter you can be. In this class, students engage in discussion, role playing, and practical experiences to learn diapering, feeding, playing with children, child development, handling emergencies, and first aid. Students should bring a snack and a doll to class. Students are awarded certificates upon completion. Resource materials are included. Location: Spring Avenue Recreation Center. Min/Max: 8/12. (dm)

#/Link	Day	Date	Time	R/NR
<a href="#">127346</a>	Tu/Th/Tu	1/31-2/7	1/31 & 2/2: 4-7pm 2/7: 4-6pm	\$80/\$120 ●
<a href="#">127508</a>	Tu/Th/Tu	3/14-3/21	3/14 & 3/16: 4-7pm 3/21: 4-6pm	\$80/\$120 ●



## Adventure Trip: Snowshoeing at Fullersburg Woods

Ages 10-18

Zip up your winter coats and put on those hats and gloves - we're out in the snow today and trying out snowshoeing. Let's end 2022 with an adventure! Meet at 9:30am for pick-up. Please bring a water bottle, a lunch, and dress for the weather. Location: Spring Avenue Recreation Center. Min/Max: 6/12. (1b)

#/Link	Day	Date	Time	R/NR
<a href="#">127751</a>	Th	12/29	9:30am-3pm	\$35/\$40 •

## Morning Adventure: Nordic Skiing at Arrowhead Golf Course

Ages 10-18

Try cross-country skiing on groomed trails. While we may see skiers preparing for races, the course has plenty of room for beginners as well. Dress in snow clothes and layers to enjoy this fun sport. Price includes rental boots, skis, and poles. Location: Arrowhead Golf Club. Min/Max: 6/12. (1b)

#/Link	Day	Date	Time	R/NR
<a href="#">127760</a>	M	2/20	9-11am	\$25/\$30 •

## An Owl's Lunch

Ages 7-14

What does an owl eat for lunch? Solve the mystery by dissecting a pellet and examining the contents. Learn to recognize the owl species of our region. Class will conclude with a walk in the winter woods, listening for owl calls. Location: Ackerman SFC. Min/Max: 4/12. (1b)

#/Link	Day	Date	Time	R/NR
<a href="#">127757</a>	W	2/1	3:45-5:15pm	\$15/\$20 •

## Fireside Fiber Art with Liita Forsyth

Ages 7-14

Spend Mondays after school with Liita Forsyth - artist, naturalist, teacher, and proprietor of The Little Bits Workshop. Students will learn how to use wool and yarn in several ways. Time will be spent observing nature firsthand at Lake Ellyn. Students will come inside the Boathouse for art class where they will recreate woodland animals in felt and crochet. Location: Lake Ellyn Boathouse. Min/Max: 8/15. (1b)

#/Link	Day	Date	Time	R/NR
<a href="#">127741</a>	M	1/23-2/13	3:45-5pm	\$60/\$70 •



**CHESS WIZARDS**

**Checkmate**

Ages 6-12

Chess Wizards offers fun, intellectual, and challenging chess education and tournament experiences to children of all abilities and ages. In addition to weekly chess lessons and traditional gameplay, we incorporate variations of chess games that build teamwork and foster a genuine enjoyment of a game over a thousand years old. All experience levels are welcome. Location: Main Street Recreation Center. Min/Max: 10/20. (dm)

#/Link	Day	Date	Time	R/NR
<a href="#">127317</a>	Tu	1/17-3/21	4-5pm	\$250/\$275 ●

**DISCOVERY LANGUAGE**

**Beginners Spanish**

Ages 6-12

This program aims to enhance each student’s motor skills as well as linguistic skills. Movement and physical activity will be incorporated into each Spanish lesson. With our variety of immersion activities, from workbooks to relay races, art projects, and science experiments, your student will develop a love for learning and never lose interest in the Spanish language. Each class is progressive and adaptable according to the ability of the student. Students receive materials for them to keep. Location: Main Street Recreation Center. Min/Max: 5/12. No class 2/20. (dm)

#/Link	Day	Date	Time	R/NR
<a href="#">127348</a>	M	1/23-3/6	5:30-6:15pm	\$102/\$122 ●

**MAGIC OF GARY KANTOR**

**Abracadabra: Magic Class**

Ages 5-12

Children are guaranteed a great time as they learn new, age-appropriate tricks each class: cards, ropes, coins, mind-reading, and more. The tricks appear difficult but are easy to learn and perform. All materials are provided; each child receives a magic kit to take home. Location: Spring Avenue Recreation Center. Min/Max: 5/40. (dm)

#/Link	Day	Date	Time	R/NR
<a href="#">126775</a>	W	12/14	6:45-7:40pm	\$22/\$33 ●
<a href="#">127340</a>	Th	2/2	4-4:55pm	\$22/\$33 ●
<a href="#">127345</a>	Th	3/9	6:45-7:40pm	\$22/\$33 ●

**GLITZY GIRLZ**

**Winter Spa Night Retreat**

Ages 5-11

Escape the winter blues with a spa night. Glitzy Girlz staff will assist participants in making a fruit facial, fun beaded charm bracelet, and everyone will receive and be taught how to give a mini-manicure and mini-pedicure with an assortment of colors and nail stickers. Participants will receive a glam spa goodie bag. Children are welcome to come in their PJs. Location: Spring Avenue Recreation Center. Min/Max: 6/25. (ks)

#/Link	Day	Date	Time	R/NR
<a href="#">127295</a>	Th	1/12	6-7:15pm	\$38/\$55 ●

**GLITZY GIRLZ**

**80’s Neon Glam Dance Party**

Ages 4-11

Join Glitzy Girlz for a night filled with 80’s fun, neon, and throwback dance hits. Staff will pamper kids with an 80’s make-over complete with neon headband, colored hair spray, makeup, and neon nail polish. Participants will decorate a neon bag with paints and jewels and design a unique beaded bracelet with an 80’s charm. The night will end with a dance party and photos. Participants will receive a surprise goodie bag. Children are welcome to come in their PJs. Location: Spring Avenue Recreation Center. Min/Max: 6/25. (ks)

#/Link	Day	Date	Time	R/NR
<a href="#">127293</a>	Th	2/9	6-7:15pm	\$38/\$55 ●



## Ackerman Arts and Crafts

Ages 6-12

Young makers will dabble in all kinds of activities to spark their creativity such as paper art, jewelry making, clay sculpting, and more. Every session we pick new kid-friendly projects themed around the season or holiday. All materials are provided. The best part? Kids take home their projects, but the mess stays at Ackerman. Location: Ackerman SFC. Min/Max: 5/25. (rb)

#/Link	Day	Date	Time	R/NR
<a href="#">127766</a>	Sa	1/7-1/28	10-11am	\$30/\$45 ●
<a href="#">127767</a>	Sa	2/4-2/25	10-11am	\$30/\$45 ●
<a href="#">127768</a>	Sa	3/4-3/25	10-11am	\$30/\$45 ●

### CHERYL RAUSCH ART

## Draw Your Favorite Pet

Ages 5-17

Create a colorful work of art of your favorite pet friend using colored pencil. Bring a color copy or photograph of your pet or animal of interest as a reference, and the instructor will help you with the rest. Learn basic techniques to help bring your artwork to life. All supplies will be provided. Location: Spring Avenue Recreation Center. Min/Max: 5/15. (ks)

#/Link	Age	Day	Date	Time	R/NR
<a href="#">127283</a>	5-11	Sa	2/4	10-11:30am	\$43/\$58 ●
<a href="#">127287</a>	12-17	Sa	2/18	10-11:30am	\$43/\$58 ●

### CHERYL RAUSCH ART

## Rock Painting

Ages 5-17

Create your own art rocks by using your imagination and the art supplies provided for you. This is a fun and easy alternative to making your own custom art. Location: Spring Avenue Recreation Center. Min/Max: 5/15. (ks)

#/Link	Age	Day	Date	Time	R/NR
<a href="#">127284</a>	5-11	Sa	3/4	10-11:30am	\$43/\$58 ●
<a href="#">127285</a>	12-17	Sa	1/7	10-11:30am	\$43/\$58 ●

### YOUNG REMBRANDTS

## Double the Fun Drawing

Ages 5-12

This class will awaken the inner artist. We explore all the basics of visual arts, in a fun and confident setting that ensures success for every child. Basic drawing, portraits, action, and cartooning. Students complete several different projects and learn to draw whimsical characters, animals, everyday objects, and action scenes. Location: Main Street Recreation Center. Min/Max: 7/12. (ks)

#/Link	Day	Date	Time	R/NR
<a href="#">127493</a>	Sa	1/14-1/28	10am-12pm	\$98/\$113 ●
<a href="#">127494</a>	Sa	2/4-2/18	10am-12pm	\$98/\$113 ●
<a href="#">127495</a>	Sa	3/4-3/18	10am-12pm	\$98/\$113 ●

## Sew Simple: Hand Sewing

Ages 5-7

The art of sewing helps children develop their fine motor skills, practice patience, and build confidence. Learn hand sewing as you make fun projects with step-by-step instructions. Participants will learn various hand stitches, how to thread a needle, and how to sew on a button in this beginner level class. Location: Spring Avenue Recreation Center. Min/Max: 3/10. (dm)

#/Link	Project	Day	Date	Time	R/NR
<a href="#">127310</a>	Snowman	Tu	1/10	4-5:30pm	\$27/\$37 ●
<a href="#">127312</a>	Heart	Tu	2/7	4-5:30pm	\$27/\$37 ●
<a href="#">127313</a>	Shamrock	Tu	3/14	4-5:30pm	\$27/\$37 ●

## Sew Simple: Machine Sewing

Ages 8-12

Sewing beginners will expand their creativity by learning how to operate a sewing machine, while participants with more experience will strengthen their sewing ability. The basic skills taught in this class will provide a great foundation for other sewing classes and projects. Bring your own sewing machine or use ours. Participants are asked to bring a yard of woven cotton fabric; all other supplies will be provided. Location: Spring Avenue Recreation Center. Min/Max: 2/8. (dm)

#/Link	Day	Date	Time	R/NR
<a href="#">127315</a>	Th	1/19-2/9	4:15-6pm	\$200/\$225 ●



**BRICKS 4 KIDZ**

**LEGO® STEM Workshop:  
Simple Machines**

Ages 5-9

Delve into the world of simple machines. Students will learn all about different simple machines like levers, pulleys, and inclined planes, and then get to build their own simple machines completely out of LEGO® bricks. Students will use our proprietary kits and model plans to construct exciting moving models. Our one-of-a-kind models incorporate gears, axles, pulleys, motors, and battery packs. We will discover all the simple machines that we use in our everyday lives. Location: Main Street Recreation Center. Min/Max: 10/16. (dm)

#/Link	Day	Date	Time	R/NR
<a href="#">127579</a>	M	1/9-1/30	5-6pm	\$80/\$120 •

**BRICKS 4 KIDZ**

**LEGO® Engineering:  
Forces of Nature**

Ages 5-9

This engineering workshop is all about amazing and powerful forces of nature. Students explore the when, where, how, and why of all kinds of natural phenomena. Participants will examine a map of the Pacific “Ring of Fire” where most tsunamis occur and a diagram of the tectonic plates. They will also learn how their movement creates earthquakes, define the area known as “Tornado Alley” in North America, and find out what hurricanes are called in different parts of the world. These lessons are designed to improve your child’s understanding of the forces of nature and how to be safe during them. Participants will love to build moving models of a tornado, a whirlpool, an earthquake, cyclone, and more. Location: Main Street Recreation Center. Min/Max: 10/16. (dm)

#/Link	Day	Date	Time	R/NR
<a href="#">127580</a>	M	2/13-3/6	5-6pm	\$80/\$120 •

**LITTLE MEDICAL SCHOOL**

**Little Veterinarian School – Cat**

Ages 6-11

Students will role-play the key responsibilities of a veterinarian and perform a whiskers-to-tail exam on their newly “adopted” plush cat. These future veterinarians will learn about animal body language and how to maintain a healthy environment, including proper litterbox placement. They will also create a cat toy and design a vet clinic. Location: Main Street Recreation Center. Min/Max: 8/16. (dm)

#/Link	Day	Date	Time	R/NR
<a href="#">127298</a>	Th	2/16-3/23	4-5pm	\$190/\$240 •

**LITTLE MEDICAL SCHOOL**

**Little Veterinarian School – Dog**

Ages 6-11

After “adopting” their very own plush puppy, students will roleplay the key responsibilities of a veterinarian, including how to properly perform a nose-to-tail exam. These future veterinarians will learn how to sew stitches, remove ticks, make healthy treats, and vaccinate their dog. Location: Main Street Recreation Center. Min/Max: 8/16. (dm)

#/Link	Day	Date	Time	R/NR
<a href="#">127299</a>	Th	2/16-3/23	5:15-6:15pm	\$190/\$240 •

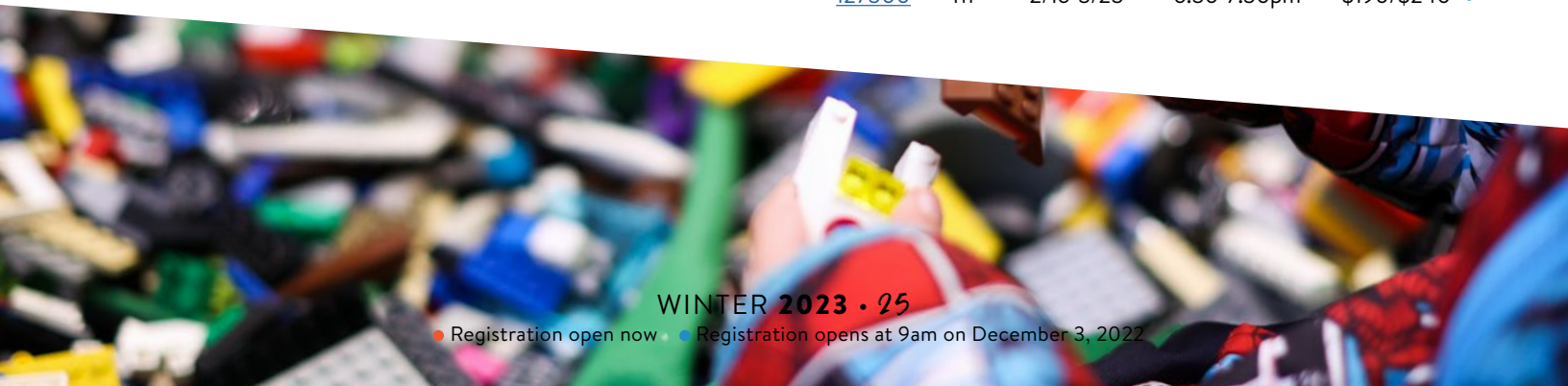
**LITTLE MEDICAL SCHOOL**

**Little Doctor School**

Ages 6-11

Through role-play and activities, students will learn the key responsibilities of a doctor and explore the heart, lungs, and digestion. Students will use real medical instruments (stethoscope, reflex hammer, and blood pressure cuff) and practice scrubbing, suturing, and tying knots like a real surgeon. Location: Main Street Recreation Center. Min/Max: 8/16. (dm)

#/Link	Day	Date	Time	R/NR
<a href="#">127300</a>	Th	2/16-3/23	6:30-7:30pm	\$190/\$240 •



**LITTLE MEDICAL SCHOOL****Little Veterinarian School – Horse**

Ages 6-11

Students will “adopt” and name their plush horse and learn the anatomy and maintenance of a horse. They will also learn basic horse nutrition, riding styles, gaits, and role-play the basic key responsibilities of an equine veterinarian. Location: Main Street Recreation Center. Min/Max: 8/16. (dm)

#/Link	Day	Date	Time	R/NR
<a href="#">127302</a>	Sa	1/14-1/21	9am-12pm	\$165/\$205 •

**LITTLE MEDICAL SCHOOL****Journey Through the Human Body - Anatomy**

Ages 6-11

Come and explore the amazing world of anatomy. Students will learn all about the systems of the body and how they work with each other to make us work. Students will start with the structures that hold us together, then learn about how the body moves things around, works to protect us, and perceives the world around us. Location: Main Street Recreation Center. Min/Max: 8/16. (dm)

#/Link	Day	Date	Time	R/NR
<a href="#">127303</a>	Sa	1/14-1/21	1-4pm	\$165/\$205 •

**MAD SCIENCE****Mad Science**

Ages 6-12

Each class is an interactive, aged appropriate exploration of the specific science topic designed to captivate the curious nature of young children. Children enjoy engaging demonstrations, perform simple experiments, and will discover how science can help us better understand the world around us. Supplies included, and each child will get to take home a cool take-home every week. Location: Main Street Recreation Center. Min/Max: 12/25. (dm)

#/Link	Day	Date	Time	R/NR
<a href="#">127307</a>	Th	2/9-3/16	4:30-5:30pm	\$190/\$240 •

**LISA LOMBARDI****New Year's Chocolate Bridges**

Ages 6-13

This class demonstrates how the feeling of hope in the present day can lead to a sweet outcome in the future. Smashing negative thoughts, knowing our strengths, using humor, having emotional self-control, and using a growth mindset are just some of the strategies we will learn. To dramatize the concept of hope, we will engineer a Hershey's chocolate candy bridge while we learn about the world's most decadent bridges. Kids may take their edible creation home or eat it on the spot. Location: Main Street Recreation Center Min/Max: 9/25. (dm)

#/Link	Day	Date	Time	R/NR
<a href="#">127368</a>	Tu	1/10	5:30-6:30pm	\$33/\$45 •

**LISA LOMBARDI****Valen-Slime: Stretchy Thinking Slime Lab**

Ages 6-13

Have the slime of your life making Valentine's Day themed slime. Customize your slime in the concoction center to smell like gourmet chocolates, fresh cut roses, or chocolate covered strawberries. Then, color it to be vibrant with the colors known for Cupid's Day. Kids take their slime home. Bonus: Attendees will receive a life coaching lesson on greed, gratitude, love, and removing winter worries. Location: Main Street Recreation Center. Min/Max: 9/15. (dm)

#/Link	Day	Date	Time	R/NR
<a href="#">127369</a>	W	2/8	6-7pm	\$33/\$45 •

**LISA LOMBARDI****Valen-Science Experience**

Ages 6-13

Yesterday was Valentine's Day, but we are still celebrating. Are you crushing on Valen-science? Experiment and check out all the things that make Valentine's explosive and fun like carbon dioxide candy chaos, magnetic heart attraction, anti-gravity rocket love arrows, and finally a tower of hearts tournament for prizes. Kids' hearts will be happy after this lab. Location: Main Street Recreation Center. Min/Max: 9/25. (dm)

#/Link	Day	Date	Time	R/NR
<a href="#">127370</a>	W	2/15	4:30-5:30pm	\$33/\$45 •





**LISA LOMBARDI**

### Tropical Island Lab

Ages 5-13

Paradise is calling. With spring break just a few weeks away, it's time to step into the ultimate STEM lab. Participants will be whisked away to enjoy marine and island life. Hands-on life coaching lessons based on tropical themes will be played throughout the program. Activities will involve coconuts, an earthquake-proof pool cabana, coral science, octopus escapism, belugas whales, ocean plastic-palooza, snack shack science, palm tree adventures, and a seashell lab. Location: Main Street Recreation Center. Min/Max: 9/18. (dm)

#/Link	Day	Date	Time	R/NR
<a href="#">127371</a>	W	3/8	4:30-5:30pm	\$33/\$45 ●

**LISA LOMBARDI**

### Spring Ice Cream Lab

Ages 6-13

Making and eating ice cream is a tasty way to introduce early chemistry teachings to children and helps build self-esteem. Kids can become experts on this billion-dollar industry as they make a batch of homemade spring-themed ice cream. We will explore the science and history of beloved amusement park treats, Dippin' Dots, waffle cones, and the first novelty ice cream bar, the Edy's Pie. Then, we'll sit down for the most outrageous ice cream eating contest in town. Location: Main Street Recreation Center. Min/Max: 9/25. (dm)

#/Link	Day	Date	Time	R/NR
<a href="#">127372</a>	F	3/10	4:30-5:30pm	\$33/\$45 ●

**MYPLATE2YOURS**

### Kids Can Cook

Ages 6-12

When kids cook, they learn life skills, and practice math and science. Nutrition and kitchen skills will be covered in this class. At the end of the session, your child will sample two delicious recipes, understand the benefits of good nutrition, and have the confidence that kids can cook. Location: Spring Avenue Recreation Center. Min/Max: 5/15. (dm)

#/Link	Day	Date	Time	R/NR
<b>Homestyle Chicken and Dumplings</b>				
<a href="#">127350</a>	W	1/18	4-5:30pm	\$35/\$50 ●
<b>Cheesy Beef and Bean Enchiladas</b>				
<a href="#">127351</a>	W	2/15	4-5:30pm	\$35/\$50 ●
<b>Asian Beef and Pea Pod Stir-Fry</b>				
<a href="#">127352</a>	W	3/8	4-5:30pm	\$35/\$50 ●

**PINHEAD PIANO**

### Introduction to Guitar

Ages 6-14

This ten-week introductory guitar class will teach participants how to play scales, chords, solo, read music, and play a song with audio. Participants will need to supply their own guitar. Location: Main Street Recreation Center. Min/Max: 2/5. (ks)

#/Link	Day	Date	Time	R/NR
<a href="#">127805</a>	Th	1/5-3/9	7-7:45pm	\$162/\$210 ●



## Piano for Kids: Beginner Group Lessons

Ages 5-8

This is a great opportunity for young children that are new to the piano to learn piano in a fun setting with others. Students will engage in age-appropriate instruction as they learn basic keyboard skills, note reading, musical concepts, simple songs, and even some improvisation. Students should have a piano or keyboard at home. An iPad is helpful but not necessary for additional at-home practice. \$15 materials fee is due the first day of class. Students will showcase their work at a Spring Piano Recital on Tuesday, April 18. Location: Main Street Recreation Center. Min/Max: 4/8. No lessons on 1/16, 2/20, 3/13, 3/27. (ks)

#/Link	Day	Date	Time	R/NR
<a href="#">127484</a>	M	1/9-4/10	4:15-5pm	\$170/\$210 ●
<a href="#">127491</a>	M	1/9-4/10	5:15-6pm	\$170/\$210 ●

## Piano for Kids: Advanced Beginner Group Lessons

Ages 5-8

This class is for students who have completed at least one session of Beginner Group Lessons. Students will showcase their work at a Spring Piano Recital on Tuesday, April 18. Location: Main Street Recreation Center. Min/Max: 4/8. No lessons on 1/16, 2/20, 3/13, 3/27. (ks)

#/Link	Day	Date	Time	R/NR
<a href="#">127492</a>	M	1/9-4/10	6:15-7pm	\$170/\$210 ●

## Piano for Kids: Private Lessons

Ages 6-15

Start or continue your piano journey. In-person 1:1 private and 2:1 semi-private lessons are available with Ms. Monica at Main Street Recreation Center. Students will showcase their work at a Spring Piano Recital on Tuesday, April 18. See the online description for more information and materials list. No lessons on 1/16, 2/20, 3/13, 3/14, 3/16, 3/27, 3/28, 3/30. (ks)

#/Link	Day	Date	Time	R/NR
<b>Semi-Private Lessons</b>				
<a href="#">127353</a>	Tu	1/10-4/11	4:30-5pm	\$310/\$385 ●
<a href="#">127354</a>	Tu	1/10-4/11	5:30-6pm	\$310/\$385 ●
<a href="#">127355</a>	Th	1/12-4/13	4:30-5pm	\$310/\$385 ●
<b>Private Lessons</b>				
<a href="#">127356</a>	M	1/9-4/10	7-7:30pm	\$327/\$406 ●
<a href="#">127357</a>	M	1/9-4/10	7:30-8pm	\$327/\$406 ●
<a href="#">127358</a>	Tu	1/10-4/11	4-4:30pm	\$390/\$485 ●
<a href="#">127359</a>	Tu	1/10-4/11	5-5:30pm	\$390/\$485 ●
<a href="#">127360</a>	Tu	1/10-4/11	5:30-6pm	\$390/\$485 ●
<a href="#">127361</a>	Tu	1/10-4/11	6-6:30pm	\$390/\$485 ●
<a href="#">127362</a>	Tu	1/10-4/11	6:30-7pm	\$390/\$485 ●
<a href="#">127363</a>	Tu	1/10-4/11	7-7:30pm	\$390/\$485 ●
<a href="#">127364</a>	Th	1/12-4/13	4-4:30pm	\$390/\$485 ●
<a href="#">127365</a>	Th	1/12-4/13	5-5:30pm	\$390/\$485 ●
<a href="#">127366</a>	Th	1/12-4/13	5:30-6pm	\$390/\$485 ●
<a href="#">127367</a>	Th	1/12-4/13	6-6:30pm	\$390/\$485 ●



## Audition Workshop

Ages 7-18

Amateur actors will learn all about the audition process as well as techniques to use when you try out for a theatre production. This workshop is designed to help our actors feel more confident and prepared. Actors will sing, dance, and act from parts of our upcoming musical, Into the Woods Jr! Location: Main Street Recreation Center. Min/Max: 6/20. (ks)

#/Link	Day	Date	Time	R/NR
<a href="#">127013</a>	W	12/7	5:30-7:30pm	\$15/\$20 ●
<a href="#">127014</a>	Th	12/15	5:30-7:30pm	\$15/\$20 ●

## Stage Makeup Workshop

Ages 7-15

Learn how to use makeup and face paints to bring characters to life with guided directions and examples. Each week features a different character – perfect for a future costume or just for fun. Location: Main Street Recreation Center. Min/Max: 4/10. (ks)

#/Link	Day	Date	Time	R/NR
<b>Queen of Hearts</b>				
<a href="#">127347</a>	F	1/20	6-7:30pm	\$40/\$60 ●
<b>Mad Hatter</b>				
<a href="#">127603</a>	F	1/27	6-7:30pm	\$40/\$60 ●
<b>Maleficent</b>				
<a href="#">127604</a>	F	2/17	6-7:30pm	\$40/\$60 ●
<b>Ursula</b>				
<a href="#">127605</a>	F	2/24	6-7:30pm	\$40/\$60 ●
<b>Beetlejuice</b>				
<a href="#">127606</a>	F	3/17	6-7:30pm	\$40/\$60 ●
<b>Wicked Witch</b>				
<a href="#">127607</a>	F	3/24	6-7:30pm	\$40/\$60 ●

## SHINING STAR PRODUCTIONS

### Young Actors Club

Ages 6-8

This fast-paced drama class is a new and exciting adventure into the imagination with changing themes, music, and games. Children will even learn a short song and a new joke every week. Learn theatre terms, enhance spontaneity, build self-esteem, and have a blast. Themes for upcoming classes will be announced on a weekly basis. Every session is different, and most themes are not repeated for two years. Location: Main Street Recreation Center. Min/Max: 6/14. (ks)

#/Link	Day	Date	Time	R/NR
<a href="#">127297</a>	W	2/8-3/22	6:30-7:15pm	\$73/\$88 ●

## SHINING STAR PRODUCTIONS

### LOL Improv

Ages 9-13

Play, create, and laugh out loud in this exciting improvisation class. Learn comedic timing, the art of acting on the fly, and being spontaneous while creating characters and playing theatre games. Location: Main Street Recreation Center. Min/Max: 6/10. (ks)

#/Link	Day	Date	Time	R/NR
<a href="#">127304</a>	W	2/8-3/22	7:30-8:15pm	\$73/\$88 ●





## GLEN ELLYN THEATRE COMPANY

# Spring Production: Into the Woods Jr.

Ages 7-18

Glen Ellyn Theatre Company is a recreational theatre program that creates quality theatre programs with young actors. Participants observe the process of producing a show from start to finish, learn songs and dance routines, create props, and more.

This season's production, *Into the Woods Jr.*, is a lyrically rich retelling of classic Brothers Grimm fables. All your favorite characters - Cinderella, Little Red Riding Hood, Jack (and his beanstalk) and the Witch join in this musical. The musical centers on a baker and his wife, who wish to have a child; Cinderella, who wishes to attend the King's festival; and Jack, who wishes his cow could give milk. When the baker and his wife learn that they cannot have a child because of a witch's curse, the two set off on a journey to break the curse, and wind up changed forever (Musical Theatre International).

Not an actor, but still want to participate? Volunteers are needed to help build sets, create costumes, and more. If you are interested, email [kspeck@gepark.org](mailto:kspeck@gepark.org).

**Auditions:** January 11 and January 12 at Main Street Recreation Center. Registration is required and can be completed online at [gepark.org/register](http://gepark.org/register) (type "Into the Woods" into the activity search bar) beginning at 9 a.m. December 3 for resident and 9 a.m. December 10 for nonresidents. There is no fee to audition.

**Casting & Participation Fee:** All who are cast after auditions must pay a participation fee (\$250 for residents, \$275 for nonresidents) prior to the first rehearsal. Fee includes a t-shirt and cast party after the show. Costumes will need to be provided by participants closer to the performances.

**Rehearsals:** January 18 to April 6 at Main Street Recreation Center from 5:30 to 8pm on Wednesdays and Thursdays. Additional dance calls will take place on 2-3 Saturdays during the production process and will be communicated well in advance. A call sheet will be sent out weekly. Tech week will take place from April 10 to April 13 from 5 to 8pm at the Oakbrook Terrace Park District and will require all actors. A caregiver and cast meeting will take place after rehearsals begin.

**Performances:** Friday, April 14 through Sunday, April 16. Tickets will be sold at an additional cost. (ks)



WINTER 2023 • 30

● Registration open now ● Registration opens at 9am on December 3, 2022



# school's out programs

When the kids are off from school, we have you covered!

## CHESS WIZARDS

### Checkmate Winter Camp

Ages 6-12

Team chess games, puzzles, skill-building, and team and individual physical games are just some of the ways we integrate the whole person into our camp activities. A sample day might include exploration of a technical chess concept, fun group challenges which hone specific chess thinking patterns, a healthy snack, a mini-tournament, capture-the-flag, and blob tag. Or creating and designing your own chess piece to be used in a practice game with your new friends. After all, it's camp...we want our students to make memories that they will carry with them through the upcoming school year and beyond. Participants will receive a trophy, Chess Wizards t-shirt, folder, and a chess puzzle workbook. Bring your own lunch if you attend the full day option. Location: Main Street Recreation Center. Min/Max: 10/14. (dm)

#/Link	Day	Date	Time	R/NR
<a href="#">127319</a>	M-Th	12/19-12/22	9am-12pm	\$195/\$225 ●
<a href="#">127324</a>	M-Th	12/19-12/22	12-3pm	\$195/\$225 ●
<a href="#">127330</a>	M-Th	12/19-12/22	9am-3pm	\$275/\$305 ●

### Main Street Winter Break Camp

Ages 6-12

Spend those long days during your winter break participating in a variety of activities. Campers will take part in recreational games, outdoor winter activities, making crafts, and gym activities. Bring a sack lunch and drink each day. Location: Main Street Recreation Center. Min: 10/25. (dm)

#/Link	Day	Date	Time	R/NR
<a href="#">127489</a>	Tu-Th	12/20-12/22	9am-3pm	\$150/\$225 ●
<a href="#">127490</a>	Tu-Th	12/27-12/29	9am-3pm	\$150/\$225 ●



### Ackerman Sports & Fun Day-Off School Camp

Ages 5-12

This athletic camp emphasizes instruction, participation, and general fitness. Participants will learn more about sports and partake in individual activities while still being part of a group setting including skill drills, arts and crafts, relay races, exercising, and socializing. Location: Ackerman SFC. Min/Max: 5/25. (rb)

#/Link	Day	Date	Time	R/NR
<b>Winter Break Camps</b>				
<a href="#">126683</a>	M-W	12/19-12/21	9am-12pm	\$85/\$100 ●
<a href="#">126684</a>	M-W	12/19-12/21	12:30-3:30pm	\$85/\$100 ●
<a href="#">126685</a>	M-W	12/26-12/28	9am-12pm	\$85/\$100 ●
<a href="#">126686</a>	M-W	12/26-12/28	12:30-3:30pm	\$85/\$100 ●
<b>Day-Off School Camps</b>				
<a href="#">127769</a>	M	1/16	9am-12pm	\$35/\$50 ●
<a href="#">127770</a>	M	1/16	12:30-3:30pm	\$35/\$50 ●
<a href="#">127772</a>	Tu	1/17	9am-12pm	\$35/\$50 ●
<a href="#">127771</a>	Tu	1/17	12:30-3:30pm	\$35/\$50 ●
<a href="#">127773</a>	F	2/17	9am-12pm	\$35/\$50 ●
<a href="#">127774</a>	F	2/17	12:30p-3:30pm	\$35/\$50 ●
<a href="#">127776</a>	M	2/20	9am-12pm	\$35/\$50 ●
<a href="#">127775</a>	M	2/20	12:30-3:30pm	\$35/\$50 ●
<a href="#">127777</a>	F	3/3	9am-12pm	\$35/\$50 ●
<a href="#">127778</a>	F	3/3	12:30-3:30pm	\$35/\$50 ●
<a href="#">127780</a>	F	3/24	9am-12pm	\$35/\$50 ●
<a href="#">127779</a>	F	3/24	12:30-3:30pm	\$35/\$50 ●
<b>Spring Break Camps</b>				
<a href="#">127781</a>	M-F	3/27-3/31	9am-12pm	\$165/\$200 ●
<a href="#">127782</a>	M-F	3/27-3/31	12:30-3:30pm	\$165/\$200 ●



## Spring Break Dance Academy Mini Camp

Ages 5-8

Experience four days of dance activities, including arts and crafts, group games, story time, and basic dance technique. No dance experience is necessary to join this camp. Dancers should wear comfortable clothing with dance or gym shoes and bring a snack with a water bottle. The last day of camp, our dancers will show off their new moves for friends and family. Location: Spring Avenue Recreation Center. Min/Max: 6/20. (ks)

#/Link	Day	Date	Time	R/NR
<a href="#">127547</a>	M-Th	3/27-3/30	9:30-11:30am	\$80/\$120 ●

## Day Off School Dance Camp

Ages 5-8

Fill the school day off with dance activities including arts and crafts, group games, story time, and basic dance technique. No dance experience is necessary to join this camp. Location: Spring Avenue Recreation Center. Min/Max: 6/20. (ks)

#/Link	Day	Date	Time	R/NR
<a href="#">127548</a>	M	1/16	9:30-11:30am	\$20/\$35 ●
<a href="#">127549</a>	M	2/20	9:30-11:30am	\$20/\$35 ●

## Winter Warm Up

Ages 5-12

Start winter break off by getting outside for a walk through the woods. We will warm up by learning to build a fire, followed by s'mores to celebrate our success.

Location: Churchill Park. Min/Max: 4/12. (lb)

#/Link	Day	Date	Time	R/NR
<a href="#">126626</a>	F	12/16	1:30-3pm	\$20/\$25 ●

## Woodpecker Walk

Ages 5-12

Walk through the winter woods looking and listening for different woodpeckers. Learn to recognize the distinctive features of each kind. We will place some of their favorite foods in the woods and see what happens! Price includes a suet feeder that each child attending will put together to take home for their yard. Location: Churchill Park.

Min/Max: 4/20. (lb)

#/Link	Day	Date	Time	R/NR
<a href="#">127754</a>	Tu	1/17	1:30-3pm	\$20/\$25 ●

## Coyote Crossing

Ages 5-12

Learn to recognize signs of coyotes and other animals. Make casts of animal tracks. Hike and look for signs of wildlife in the woods. Location: Ackerman SFC. Min/Max: 4/12. (lb)

#/Link	Day	Date	Time	R/NR
<a href="#">127758</a>	F	2/17	1:30-3pm	\$10/\$15 ●

## Pancakes and Maple Syrup

Ages 5-12

Learn the natural history of maple syrup. Tap a maple tree to collect the sap, then head indoors to make some pancakes to enjoy with some of last year's syrup. Location: Spring Avenue Recreation Center. Min/Max: 4/12. (lb)

#/Link	Day	Date	Time	R/NR
<a href="#">127762</a>	F	3/3	1:30-3pm	\$15/\$20 ●





# adult, aoa and senior interest

**who to contact:**

(dm) David MacDonald, [dmacdonald@gepark.org](mailto:dmacdonald@gepark.org)

(ks) Katy Speck, [kspeck@gepark.org](mailto:kspeck@gepark.org)

(ls) Lisa Semetko, [lsemetko@gepark.org](mailto:lsemetko@gepark.org)

(rb) Rebecca Brush, [rbrush@gepark.org](mailto:rbrush@gepark.org)



# adult interest

## Women's Self Defense

Ages 18 and up

This educational class will teach participants the basics of self-defense and how to protect yourself in a threatening situation. Our instructor, Master Raul, will go over how to assess a potentially dangerous environment and what to do to stay safe. Location: Ackerman SFC. Min/Max 4/12. (rb)

#/Link	Day	Date	Time	R/NR
<a href="#">127783</a>	Sa	1/7	9-10am	\$15/\$25 •

## DUNHAM WOODS FARM

### Adult Horsemanship

Ages 18 and up

Join in the fun at Dunham Woods Farm with beginning riding lessons. You'll learn all about the proper ways to groom, tack, and handle horses. In the saddle you will learn the basics of riding at the walk and trot. Lessons will be held in our indoor arena during inclement weather. Riders should wear jeans or Jodhpur pants and hard soled riding or hiking boots with a small, low heel. Bring an approved riding helmet or bicycle helmet. Make up class held at the end of the six weeks. Location: Dunham Woods Farm. Min/Max: 1/3. (dm)

#/Link	Day	Date	Time	R/NR
<a href="#">127454</a>	W	1/18-2/22	7-8pm	\$195/\$260 •

### Guess the Grape Wine Tasting

Ages 21 and up

Ever wonder how the pros identify the grape just by the color, aromas, and flavors? In this session of wine tastings with Jane of See Jane Drink Wine, we'll learn the identifiers for four different wines during a blind tasting. This is a sure way to impress your friends at your next gathering. Location: Lake Ellyn Boathouse. Min/Max: 10/30. (dm)

#/Link	Day	Date	Time	R/NR
<a href="#">127496</a>	W	2/8	6-7:30pm	\$50/\$65 •

## Paddles and Pours

Ages 21 and up

Try out platform tennis while enjoying local brews from Two Hound Red. New players and veterans of the game will get a chance to learn about platform tennis from one of our Platform Tennis Pros before relaxing in our modern paddle hut with a craft beer. One beer is included in the registration fee, additional beers are available for purchase. Dress for the weather – platform tennis is an outdoor sport. Location: Platform Tennis Center. Min/Max: 10/50. (ls)

#/Link	Day	Date	Time	R/NR
<a href="#">127733</a>	F	2/10	7-8:30pm	\$20/\$25 •

### Adult Beginner Tap

Ages 18 and up

Tap dance is an American art form that is not only entertaining to watch (and hear) but it's fun (and easy) to learn. Tap teaches rhythm, improves balance, and provides a great workout. This class includes warm-ups, basic steps, and traveling combinations. Tap shoes are required and available for purchase through the Park District. For questions regarding shoe purchase, email [kspeck@gepark.org](mailto:kspeck@gepark.org). Location: Spring Avenue Recreation Center. Min/Max: 4/20. (ks)

#/Link	Day	Date	Time	R/NR
<a href="#">127504</a>	Tu	1/10-2/7	8-9pm	\$50/\$63 •
<a href="#">127505</a>	Tu	2/14-3/14	8-9pm	\$50/\$63 •

### Adult Beginner Ballet

Ages 18 and up

A perfect class for those getting started or revisiting ballet again as an adult. This class will focus on alignment, foundation of technique, and movement quality. Location: Spring Avenue Recreation Center. Min/Max: 4/20. (ks)

#/Link	Day	Date	Time	R/NR
<a href="#">127506</a>	Th	1/12-2/9	7-7:45pm	\$50/\$63 •
<a href="#">127507</a>	Th	2/16-3/16	7-7:45pm	\$50/\$63 •



**DANCIN' FEET****West Coast Swing**

Ages 18 and up

West Coast Swing (WCS) is a popular form of swing dancing that has spread across the world. Although its history and roots come from Lindy Hop, part of the appeal of WCS is that it is an adaptable dance; it can be danced to a variety of musical styles and genres. In addition, the dance itself creates room for improvisation and interaction between the partners like a conversation.

Location: Spring Avenue Recreation Center. Min/Max: 4/12. (ks)

#/Link	Day	Date	Time	R/NR
<a href="#">127502</a>	W	1/4-2/8	7-8pm	\$60/\$75 •
<a href="#">127503</a>	W	2/15-3/22	7-8pm	\$60/\$75 •

**DANCIN' FEET****Swing Dance**

Ages 18 and up

Swing dance, known also as Jitterbug and East Coast Swing, is a popular and versatile dance. This class will teach you how to dance swing with ease and confidence. Basic lead and follow techniques will be covered in addition to many popular patterns. The class is open to couples, as well as singles. Location: Spring Avenue Recreation Center. Min/Max: 4/12. (ks)

#/Link	Day	Date	Time	R/NR
<a href="#">127500</a>	Th	1/5-2/9	6:30-7:30pm	\$60/\$75 •
<a href="#">127501</a>	Th	2/16-3/23	6:30-7:30pm	\$60/\$75 •

**DANCIN' FEET****Ballroom Dance**

Ages 18 and up

Learn the basics of Waltz and Foxtrot. Register with your favorite partner, or individually, for this enjoyable, fun, and energy packed dance session. You'll be ready to hit the dance floor in no time. Location: Spring Avenue Recreation Center. Min/Max: 4/12. (ks)

#/Link	Day	Date	Time	R/NR
<a href="#">127498</a>	Th	1/5-2/9	7:30-8:30pm	\$60/\$75 •
<a href="#">127499</a>	Th	2/16-3/23	7:30-8:30pm	\$60/\$75 •

**Mindfulness Meditation**

Ages 18 and up

Train your mind the way you train your body for the perfect way to stay centered. Learn centuries-old meditation techniques and breathing exercises from Chopra Center certified instructor Stephanie Frantz to reduce anxiety and stress and increase your overall health and sense of well-being. Location: Main Street Recreation Center. Min/Max: 3/14. (dm)

#/Link	Day	Date	Time	R/NR
<a href="#">127434</a>	Sa	2/25-3/18	1-1:50pm	\$75/\$85 •

**Sound Bath Series - Release**

Ages 18 and up

Experience a 45-minute sound bath each week in the month of January with the intention to release. During these sound healing sessions, the goal is to activate the parasympathetic nervous system without trying so hard to achieve the meditative state. Some effects of meditation include heightening brain function, stress reduction, mood improvement, increased focus and centering of the mind and soul. The instructor, Courtney O'Keeffe, is a certified sound healer through The Integrative Healing Academy. She uses a combination of crystal singing bowls at 432hz tuned to the 7 chakras, 2 earth element chimes, and an ocean drum to create a relaxing environment for meditation. Please bring your own yoga mats or cushions for meditation. Location: Main Street Recreation Center. Min/Max: 4/20. (dm)

#/Link	Day	Date	Time	R/NR
<b>Release Tension</b>				
<a href="#">127581</a>	Th	1/5	7-7:45pm	\$25/\$35 •
<b>Release Stress</b>				
<a href="#">127582</a>	Th	1/12	7-7:45pm	\$25/\$35 •
<b>Release Expectations</b>				
<a href="#">127583</a>	Th	1/19	7-7:45pm	\$25/\$35 •
<b>Release What No Longer Serves You</b>				
<a href="#">127584</a>	Th	1/26	7-7:45pm	\$25/\$35 •
<b>All Sessions</b>				
<a href="#">127585</a>	Th	1/5-1/26	7-7:45pm	\$80/\$120 •

## Seated Tai Chi

Age 18 and up

Clear-mindedness and better health come from the practice of Tai Chi. All ages can benefit from breath work, balancing both sides of the body, and improved upper body strength and flexibility. Taught by Yvonne Czarniak, a certified instructor in Tai Chi Chuan. Location: Wheaton Park District Mary Lubko Center. Min/Max: 1/3. (dm)

#/Link	Day	Date	Time	R/NR
<a href="#">127432</a>	Th	1/5-2/9	10-11am	\$57/\$70 •
<a href="#">127433</a>	Th	2/23-3/30	10-11am	\$57/\$70 •

## CHERYL RAUSCH ART

### Making Mandalas

Ages 18 and up

Art mandalas are a wonderful way to encourage relaxation, as well as stimulate creativity. These geometric designs are not only beautiful, but they are also easy to create. During this class, you will be guided through the process of creating your own mandala. All art supplies will be provided. Location: Spring Avenue Recreation Center. Min/Max: 5/15. (ks)

#/Link	Day	Date	Time	R/NR
<a href="#">127291</a>	Th	1/26	6:30-8pm	\$43/\$58 •

## CHERYL RAUSCH ART

### Rock Painting

Ages 18 and up

Create your own art rocks by simply using your imagination and the art supplies provided for you. This is a fun and easy alternative to making your own custom art. Location: Spring Avenue Recreation Center. Min/Max: 5/15. (ks)

#/Link	Day	Date	Time	R/NR
<a href="#">127290</a>	Th	2/23	6:30-8pm	\$43/\$58 •

## CHERYL RAUSCH ART

### Uncorked Creatives

Ages 21 and up

Spend a fun evening creating a custom canvas painting with a special theme. Attendees should bring a beverage of choice (we suggest wine!) and willingness to have fun with paint. All art supplies will be provided. Alcohol is not provided, but is permitted. Location: Lake Ellyn Boathouse. Min/Max: 5/15. (ks)

#/Link	Day	Date	Time	R/NR
<a href="#">127497</a>	Th	3/23	6:30-8:30pm	\$52/\$63 •

## Recreation Music Making Piano

Ages 18 and up

Group lessons for the piano hobbyist with an emphasis on the joy of making music with others in a stress-free environment. A piano or keyboard for at-home playing is recommended. Participants may need to order music determined at first class. Location: Wheaton North High School. Min/Max: 5/5. (ks)

#/Link	Day	Date	Time	R/NR
<a href="#">127552</a>	W	1/18-3/8	6:30-7:30pm	\$100/\$120 •

## Learn to Sew: Machine Sewing

Ages 18 and up

Always wanted to sew or just want to be able to mend clothing and operate your machine? Join us as we sew a simple pillow and hot pad in this 2-session class. Snacks will be provided. Feel free to bring your own refreshments. Bring your own machine or use ours. Supplies included. Location: Spring Avenue Recreation Center. Min/Max: 2/8. (dm)

#/Link	Day	Date	Time	R/NR
<a href="#">127465</a>	Tu	1/24-2/7	6:30-8pm	\$150/\$175 •





# active older adult & senior interest

## Holiday Luncheons

Ages 55 and up

Join us for a delicious meal, fun activities, and great company. Food will be provided by local restaurants. The meal will include snacks, main dish, drink, and desserts. Lunch will be served by noon followed by fun activities or entertainment for you to enjoy. Register in person or online. All luncheons are held at the Main Street Recreation Center. Min/Max: 10/40. (dm)

#/Link	Day	Date	Time	R/NR
<b>Holiday Spirit: Ham and mash potatoes</b>				
<a href="#">126864</a>	Tu	12/20	11:30am-1:30pm	\$10/\$12 ●
<b>Be Mine: Lasagna and garlic bread</b>				
<a href="#">127463</a>	Tu	2/14	11:30am-1:30pm	\$10/\$12 ●
<b>Shamrocks: Corn beef and cabbage</b>				
<a href="#">127464</a>	Tu	3/14	11:30am-1:30pm	\$10/\$12 ●

## Friday Night Senior Bingo

Ages 55 and up

Let's get together for bingo! Join us every Friday from 6-8pm at Ackerman Sports & Fitness Center for Senior Bingo. Enjoy several rounds of bingo while socializing with the community. Prizes will be awarded each night, including a grand prize at the end of the last game. No registration required. \$1 per card. (rb)

## Donuts and Bingo *Free!*

Ages 55 and up

Play bingo at Main Street Recreation Center on the 2nd Thursday of each month. Visit with friends over coffee and donuts while playing everyone's favorite game. Bingo will be free to play, and games will start at 10:30am. One bingo card per participant. Coffee, donuts, and bingo cards will be provided, and prizes will be awarded to winners. This free drop-in program is offered in partnership with Glen Ellyn Public Library. Min/Max: 5/40. (dm)

## AARP Driver Safety

Ages 55 and up

Become a safer driver by sharpening your defensive driving skills. Our class combines discussion and text. Completion of this program entitles you to a reduction on your automobile insurance premium. Payment of \$20 for current AARP members and \$25 for non-members is payable to AARP at the first meeting (cash or check only). No refund after attending the first meeting. Location: Main Street Recreation Center. Min/Max: 5/25. (dm)

#/Link	Day	Date	Time	R/NR
<a href="#">127436</a>	W-Th	2/15-2/16	9am-1pm	See description ●

## AARP Tax-Aide *Free!*

Ages 60 and up

Free tax assistance for the elderly will be available on Mondays from AARP Tax-Aide volunteers. The volunteers are trained and certified through an Internal Revenue Service program. Be sure to bring all your tax information from prior tax filing year and all your tax documents for current tax filing year to your appointment. Location: Main Street Recreation Center. (dm)

### Accepting appointments starting 1/3

Day	Date	Appointment Times	R/NR
<u>M</u>	2/6-4/10	8:30am, 9:30am, or 10:30am	Free w/appointment ●

## The Gazette

Subscribe to receive The Gazette, a newsletter for seniors and active older adults, to your home! This FREE printed newsletter is mailed out quarterly to subscribers ages 60 and older. Please be sure to include your email address if you would also like to receive each edition via email.

Questions? Please contact David MacDonald at [dmacdonald@gepark.org](mailto:dmacdonald@gepark.org) or (630) 942-7266.

**ILLINOIS SECRETARY OF STATE****Rules of the Road** *Free!*

Ages 65 and up

The Rules of the Road Review Course is designed to give drivers – especially senior citizens and persons with disabilities – the knowledge and confidence needed to renew or obtain a driver's license. The review course combines an explanation of the driving exam with a practice written exam. Location: Main Street Recreation Center. Min/Max: 5/20. (dm)

#/Link	Day	Date	Time	R/NR
<a href="#">127435</a>	F	3/17	10am-12pm	Free w/registration •

**CHERYL RAUSCH ART****Create Your Own Note Cards**

Ages 50 and up

Using a provided pack of blank note cards, create your own personal note cards. Bring your imagination and willingness to play with the art supplies provided for you. Location: Spring Avenue Recreation Center. Min/Max: 5/15. (ks)

#/Link	Day	Date	Time	R/NR
<a href="#">127551</a>	W	2/8	11am-12:30pm	\$43/\$58 •

**CHERYL RAUSCH ART****Making Mandalas**

Ages 50 and up

Art mandalas are a wonderful way to encourage relaxation, as well as stimulate creativity. These geometric designs are not only beautiful, but they are also easy to create. During this class, you will be guided through the process of creating your own mandala. All art supplies will be provided. Location: Spring Avenue Recreation Center. Min/Max: 5/15. (ks)

#/Link	Day	Date	Time	R/NR
<a href="#">127550</a>	W	3/8	11am-12:30pm	\$43/\$58 •

**MSRC Senior Clubs**

MSRC Senior Club offerings for all those over the age of 60. Club meetups take place at the Main Street Recreation Center, 501 Hill Avenue. Reservations are encouraged to attend club meetings by calling (630) 858-2463. (dm)

**American Mah-Jongg Club**

Make new friends every Friday between 10 a.m and 2 p.m. as you play one of the world's greatest tile-based games. All experience levels are welcome to learn and play. Free.

**Art Club**

Participants will be able to try several mediums of art and hone their individual skills. The club will be led by an experienced local artist. Payment is due at the start of class.

Day	Date	Time	R/NR
Tu	2/21	10:30am-12pm	\$7/\$10

**Book Club**

Are you an avid reader and enjoy discussing books? Join our book club which meets the third Monday of each month from 10 to 11 a.m. Snacks will be provided. Books can be checked out from Glen Ellyn Public Library. Free.

**12/19:** *Midnight Library* by Matt Haig**1/16:** *The Vanishing Half* by Brit Bennett**2/20:** *The Girl with the Louding Voice* by Abi Dare**3/20:** *The Language of Butterflies* by Wendy Williams**Card Club**

Gather with other card game enthusiasts from 10 a.m. to 12 p.m. to play your favorite games every second and fourth Wednesday of the month. All levels of card players are welcome. Card decks will be provided. Free.

**Poker Club**

Join us from 3 to 5 p.m. on the first and third Tuesday of the month for poker. All experience levels are welcome to join. Card decks and chips will be provided. Free.

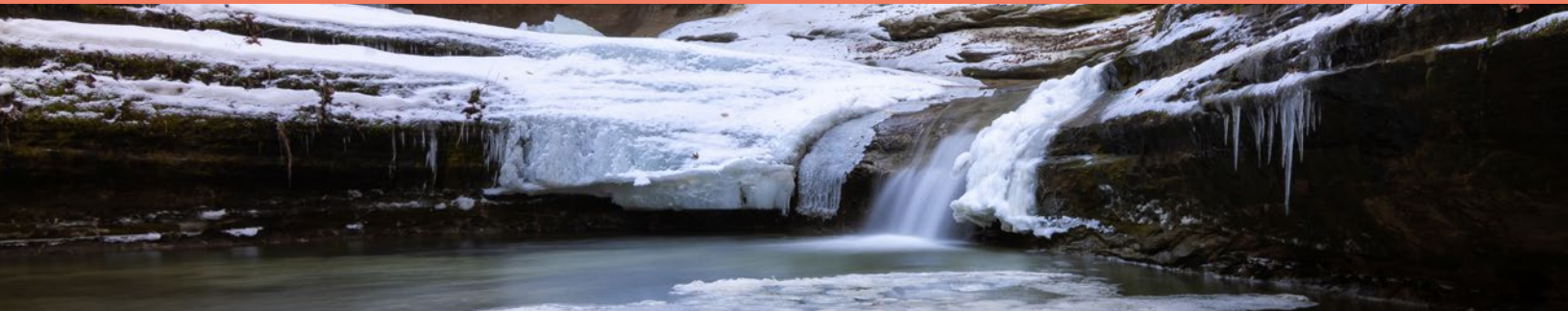
**Trivia and Social Club**

Senior social club offers the opportunity to play games, learn something new, or even test your knowledge at themed trivia. The club meets on the third Thursday of each month from 10 to 11 a.m. Snacks and treats are served. Free.

**1/19:** Popcorn Day**2/16:** Baking and Muffins**3/16:** Luck of the Irish



# day trips



## Elf the Musical at Drury Lane

Ages 21 and up

After discovering he is really a human raised as an elf, Buddy makes the journey from the North Pole to New York City to find his birth father, sharing the true meaning of Christmas along the way. Elf the Musical brings heart, hilarity, and holiday joy—after all, “the best way to spread Christmas cheer is singing loud for all to hear!” Based on the hit Christmas film, the musical adaptation was nominated for one Drama League Award. Fee includes transportation and performance. Depart from Main Street Recreation. Min/Max: 7/12. (dm)

### Register by 12/21

#/Link	Day	Date	Time	R/NR
<a href="#">127453</a>	W	12/28	12-4pm	\$75/\$95 •

## Discover the Eagles Trolley Tour

Ages 21 and up

Each year, the American Bald Eagle flocks to Starved Rock to feed on fish at the Lock and Dam. Illinois is second only to Alaska for eagle watching. Grab your binoculars and warm clothes and join us as we try to get a glimpse of these majestic birds in their natural environment. We'll begin our day with a delicious hot lunch at the Starved Rock Lodge. Next, we'll board a trolley with our own tour guide for a scenic ride in search of eagles. An eagle presentation at the Illinois Waterway Visitor Center is also included. Fee includes bus transportation, lunch, trolley tour, guide, and presentation. Departs from Main Street Recreation Center. Min/Max: 7/10. (dm)

### Register by 1/11

#/Link	Day	Date	Time	R/NR
<a href="#">127431</a>	Th	2/2	8:15am-5pm	\$94/\$109 •

## Into the Woods at Paramount Theatre

Ages 21 and up

A red cape, a strand of yellow hair, a golden shoe, and a white cow. It's these four items that send a baker and his barren wife through the woods on a magical journey to reverse a spell cast by an evil witch. Throw in Little Red Riding Hood, Jack and the Beanstalk, Rapunzel, and Cinderella and you have one of the most astounding and original fairytale retellings the stage has ever seen. Fee includes transportation and main floor seating. Departs from Main Street Recreation Center. Min/Max: 5/7. (dm)

### Register by 1/13

#/Link	Day	Date	Time	R/NR
<a href="#">127429</a>	W	2/15	12:30-4:30pm	\$49/\$54 •

## Glen Ellyn Cruisin' Crew

Ages 55 and up

Join us as we venture out to celebrate St. Patrick's Day. This is a great chance to socialize and meet new people in the area. Take a ride on the Park District bus for just \$5. Participants are responsible for all costs at the different locations. Registration is required for all attendees. Bus will depart from Main Street Recreation Center. Min/Max: 4/14. (dm)

#/Link	Location	Day	Date	Time
<a href="#">127427</a>	McNally's Pub (St. Charles)	W	3/8	11:30am-2:30pm •

## Rivers Casino Des Plaines

Ages 21 and up

Looking for a way to beat the winter blues? Well, leave the driving to us and try your luck at Rivers Casino. Home to Chicago's hottest gaming action, Rivers Casino boasts the most slot jackpots and the biggest payouts on table games. Any gambling or food purchases are on your own. Be sure to bring a valid driver's license (not expired) or state ID with you on the day of the trip. Fee includes transportation. Departs from Main Street Recreation Center. Min/Max: 5/7. (dm)

### Register by 2/20

#/Link	Day	Date	Time	R/NR
<a href="#">127428</a>	Th	3/9	10am-3pm	\$20/\$25 •

## School of Rock at Paramount Theatre

Ages 21 and up

From the genius mind of Andrew Lloyd Webber comes a rousing, feel good, and inspirational story of kids at a prestigious prep school. Wannabe rocker Dewey Finn has just been kicked out of his band, he can't pay rent, and his life is falling apart. He scams his way into a teaching job meant for his roommate and turns a class of straight-A pupils into a guitar-shredding, bass-slapping, mind-blowing rock band. Dewey's love of music and rock soon inspires the kids to pursue what they love. Fee includes transportation and main floor seating. Departs from Main Street Recreation Center. Min/Max: 5/7. (dm)

### Register by 3/17

#/Link	Day	Date	Time	R/NR
<a href="#">127430</a>	W	4/19	12:30-4:30pm	\$49/\$54 •

# Spring Avenue Dog Park

WHERE PETS COME TO PLAY.

Unleash some fun at this popular outdoor park where dogs can exercise, play, and socialize off-leash. Your four-legged friend will pawsitively love it.

MEMBERSHIP OPTIONS & MORE »

Starting at  
**\$35**  
for residents



WINTER 2023 • 40

• Registration open now • Registration opens at 9am on December 3, 2022





# nature

## Martin Luther King, Jr. Day of Service *Free!*

### Volunteer Opportunity

All ages

Honor the legacy of Dr. King by participating in a day of service. Start the day with coffee and hot chocolate. Volunteers will cut and remove invasive brush, improving the quality of our natural areas. Dress in warm layers. We will have work gloves and tools to loan. Finish the day with a nature walk and snack. Under age 14 must be accompanied by an adult. Location: Ackerman Woods. Min/Max: 4/20. (1b)

#/Link	Day	Date	Time	R/NR
<a href="#">127753</a>	M	1/16	9:30-11:30am	Free w/registration •

## Sportswap

All ages

Give and get gently used sports equipment at our spring Sportswap event with Go Green Glen Ellyn. Gear up for spring sports and activities at this community exchange. Equipment will be collected the preceding week. Watch [gopark.org](http://gopark.org) and [gogreenellyn.org](http://gogreenellyn.org) for details. (1b)

**Date:** Sunday, March 12

**Time:** 12-2pm

**Location:** Ackerman SFC

## Full Moon Hike

All ages

The full moon will be rising during this brisk and crisp winter walk. Grab the kids, bundle up, and join us for a night hike at Churchill Park. Learn which mammals and birds stay active during the winter, what they eat, where they find shelter, and how they stay warm. Children must be accompanied by an adult. Location: Churchill Park. Min/Max: 6/30. (1b)

#/Link	Day	Date	Time	R/NR
<a href="#">127752</a>	F	1/6	6:30-7:30pm	\$5/\$7 •

## Woodland Valentine Hunt

All ages

We are giving animals some love this Valentine's Day. Follow the trail to find valentines to all the woodland animals. Follow clues to a hidden treat to leave for the wildlife, then find a valentine prize for you! Fee is per child. Adult accompaniment is required, as this is self-guided. Location: Churchill Park. Min/Max: 10/70. (1b)

#/Link	Day	Date	Time	R/NR
<a href="#">127759</a>	Sa	2/18	1-2pm	\$10/\$15 •



## Preschool Nature Outings

Ages 2-5 with adult  
Explore nature this winter. Each class will feature a different topic supported by a story, craft/project, and an easy exploratory hike. Min/Max: 4/12. (1b)

#/Link	Day	Date	Time	R/NR
<i>Over and Under the Snow at Maryknoll Park</i>				
<a href="#">127735</a>	F	1/6	10-11am	\$10/\$15 ●
<i>Woodpeckers at Churchill Park</i>				
<a href="#">127736</a>	F	1/20	10-11am	\$10/\$15 ●
<i>Groundhog Day at Ackerman Woods</i>				
<a href="#">127737</a>	F	2/3	10-11am	\$10/\$15 ●
<i>Coyotes at Ackerman Woods</i>				
<a href="#">127738</a>	F	2/17	10-11am	\$10/\$15 ●
<i>Salamanders at Churchill Park</i>				
<a href="#">127739</a>	F	3/3	10-11am	\$10/\$15 ●
<i>Maple Syrup at Lake Ellyn</i>				
<a href="#">127740</a>	F	3/17	10-11am	\$10/\$15 ●

## Winter Warm Up

### Kids Day Off Program

Ages 5-12  
Start winter break off by getting outside for a walk through the woods. We will warm up by learning to build a fire, followed by s'mores to celebrate our success. Location: Churchill Park. Min/Max: 4/12. (1b)

#/Link	Day	Date	Time	R/NR
<a href="#">126626</a>	F	12/16	1:30-3pm	\$20/\$25 ●

## Woodpecker Walk

### Kids Day Off Program

Ages 5-12  
Walk through the winter woods looking and listening for different woodpeckers. Learn to recognize the distinctive features of each kind. We will place some of their favorite foods in the woods and see what happens! Price includes a suet feeder that each child attending will put together to take home for their yard. Location: Churchill Park. Min/Max: 4/20. (1b)

#/Link	Day	Date	Time	R/NR
<a href="#">127754</a>	Tu	1/17	1:30-3pm	\$20/\$25 ●

## Coyote Crossing

### Kids Day Off Program

Ages 5-12  
Learn to recognize signs of coyotes and other animals. Make casts of animal tracks. Hike and look for signs of wildlife in the woods. Location: Ackerman SFC. Min/Max: 4/12. (1b)

#/Link	Day	Date	Time	R/NR
<a href="#">127758</a>	F	2/17	1:30-3pm	\$10/\$15 ●

## Winter Terrarium

Ages 5-12  
Build a tiny winter wonderland with items you collect and cute creatures you create with clay. Location: Spring Avenue Recreation Center. Min/Max: 4/12. (1b)

#/Link	Day	Date	Time	R/NR
<a href="#">127761</a>	W	2/22	3:45-5pm	\$20/\$25 ●



## Pancakes and Maple Syrup

### Kids Day Off Program

Ages 5-12

Learn the natural history of maple syrup. Tap a maple tree to collect the sap, then head indoors to make some pancakes to enjoy with some of last year's syrup. Location: Spring Avenue Recreation Center. Min/Max: 4/12. (lb)

#/Link	Day	Date	Time	R/NR
<a href="#">127762</a>	F	3/3	1:30-3pm	\$15/\$20 •

## An Owl's Lunch

Ages 7-14

What does an owl eat for lunch? Solve the mystery by dissecting a pellet and examining the contents. Learn to recognize the owl species of our region. Class will conclude with a walk in the winter woods, listening for owl calls. Location: Ackerman SFC. Min/Max: 4/12. (lb)

#/Link	Day	Date	Time	R/NR
<a href="#">127757</a>	W	2/1	3:45-5:15pm	\$15/\$20 •

## Fireside Fiber Art with Liita Forsyth

Ages 7-14

Spend Mondays after school with Liita Forsyth - artist, naturalist, teacher, and proprietor of The Little Bits Workshop. Students will learn how to use wool and yarn in several ways. Time will be spent observing nature firsthand at Lake Ellyn. Students will come inside the Boathouse for art class where they will recreate woodland animals in felt and crochet. Location: Lake Ellyn Boathouse. Min/Max: 8/15. (lb)

#/Link	Day	Date	Time	R/NR
<a href="#">127741</a>	M	1/23-2/13	3:45-5pm	\$60/\$70 •

## Winter Tree ID

Ages 14 and up

How can a tree be identified when it doesn't have any leaves? Learn to recognize several trees by the characteristics of their bark, twigs, and buds. Class will begin inside and conclude with a walk around the grounds, testing our knowledge. Price includes a copy of May Watts' *Winter Tree Finder* for each attendee. Location: Spring Avenue Recreation Center. Min/Max: 6/20. (lb)

#/Link	Day	Date	Time	R/NR
<a href="#">127756</a>	Sa	1/21	1-2pm	\$10/\$15 •

## Adventure Trip: Snowshoeing at Fullersburg Woods

Ages 10-18

Zip up your winter coats and put on those hats and gloves - we're out in the snow today and trying out snowshoeing. Let's end 2022 with an adventure! Meet at 9:30am for pick-up. Please bring a water bottle, a lunch, and dress for the weather. Location: Spring Avenue Recreation Center. Min/Max: 6/12. (lb)

#/Link	Day	Date	Time	R/NR
<a href="#">127751</a>	Th	12/29	9:30am-3pm	\$35/\$40 •

## Morning Adventure: Nordic Skiing at Arrowhead Golf Course

Ages 10-18

Try cross-country skiing on groomed trails. While we may see skiers preparing for races, the course has plenty of room for beginners as well. Dress in snow clothes and layers to enjoy this fun sport. Price includes rental boots, skis, and poles. Location: Arrowhead Golf Club. Min/Max: 6/12. (lb)

#/Link	Day	Date	Time	R/NR
<a href="#">127760</a>	M	2/20	9-11am	\$25/\$30 •

## Decluttering Without the Dumpster

Ages 18 and up

Looking to downsize or declutter to start the new year? Kay McQueen of SCARCE will teach you how to minimize your impact on the planet while minimizing your possessions. We'll go over where to donate, what to recycle, and how to safely dispose of items as you clean out at home. Location: Spring Avenue Recreation Center. Min/Max: 15/40. (1b)

#/Link	Day	Date	Time	R/NR
<a href="#">127755</a>	W	1/18	6:30-7:30pm	\$10/\$15 ●

## Nature Walking Club *Free!*

Ages 18 and up

Bring your sense of adventure and wonder as we explore our natural heritage on local trails. These casual walks will highlight seasonal happenings and are held rain or shine. Min/Max: 4/12. (1b)

## Parakeets and Prairie at Ackerman Park

**Date:** Friday, January 13

**Time:** 9-10:30am

**R/NR:** Free w/registration

**#/Link:** [127742](#) ●

## Winter Botany on the Prairie Path - East

**Date:** Friday, February 10

**Time:** 9-10am

**R/NR:** Free w/registration

**#/Link:** [127743](#) ●

## Wildlife Watch on the Prairie Path - West

**Date:** Friday, March 10

**Time:** 9-10am

**R/NR:** Free w/registration

**#/Link:** [127744](#) ●

## Restoration Workday *Free!*

### Volunteer Opportunity

Ages 8 and up

Help clear invasive plants, cut and stack brush, plant native flowers, trees, and seeds, maintain trails, and more. Please bring your own work gloves and water bottle. Contact Laurie at [lbellmar@gepark.org](mailto:lbellmar@gepark.org) if you have questions. (1b)

### December 17

**Location:** Churchill Park

**Time:** 9-11am

**R/NR:** Free w/registration

**#/Link:** [126893](#) ●

### February 18

**Location:** Ackerman Woods

**Time:** 9-11am

**R/NR:** Free w/registration

**#/Link:** [127746](#) ●

### January 21

**Location:** Manor Park

**Time:** 9-11am

**R/NR:** Free w/registration

**#/Link:** [127745](#) ●

### March 18

**Location:** Churchill Park

**Time:** 9-11am

**R/NR:** Free w/registration

**#/Link:** [127747](#) ●

## Winter Bird Walk *Free!*

Ages 18 and up

Winter can be a great time of year to begin birding or refine your skills. Without the leaves on trees, birds are easier to find with binoculars. Identifying birds is also easier without migrants passing through. A limited quantity of binoculars will be available for loan. (1b)

### January 5

**Location:** Churchill Park

**Time:** 9-10am

**R/NR:** Free w/registration

**#/Link:** [127748](#) ●

### March 2

**Location:** Ackerman Woods

**Time:** 9-10am

**R/NR:** Free w/registration

**#/Link:** [127750](#) ●

### February 9

**Location:** Manor Park

**Time:** 9-10am

**R/NR:** Free w/registration

**#/Link:** [127749](#) ●



WINTER 2023 - 4

● Registration open now ● Registration opens at 9am







# sports

## who to contact:

- (bt) Brad Thomas, [bthomas@gepark.org](mailto:bthomas@gepark.org)
- (cb) Clint Babicz, [cbabicz@gepark.org](mailto:cbabicz@gepark.org)
- (dt) Dan Tripp, [dtripp@gepark.org](mailto:dtripp@gepark.org)
- (dm) David MacDonald, [dmacdonald@gepark.org](mailto:dmacdonald@gepark.org)
- (gb) Gabe Billings, [gbillings@gepark.org](mailto:gbillings@gepark.org)
- (ks) Katy Speck, [kspeck@gepark.org](mailto:kspeck@gepark.org)
- (ls) Lisa Semetko, [lsemetko@gepark.org](mailto:lsemetko@gepark.org)
- (rb) Rebecca Brush, [rbrush@gepark.org](mailto:rbrush@gepark.org)



WINTER 2023 \$5

● Registration open now ● Registration opens at 9am on December 3, 2022



# early childhood sports

## ALL STAR SPORTS

### Adult/Tot Super Sports Jr.

Ages 2-3 with adult

Enjoy this opportunity to bond and have fun together while learning a variety of sports. Adult/Tot Sports offers a great opportunity to improve the simple motor skills of catching, throwing, batting, shooting, passing, and running, and also improves hand-eye coordination. Adults participate with their child playing soccer, basketball, hockey, T-Ball, and other sports. Equipment is provided. Location: Main Street Recreation Center. Min/Max: 5/16. (dm)

#/Link	Day	Date	Time	R/NR
<a href="#">127387</a>	Tu	1/17-2/14	12-12:45pm	\$70/\$90 ●
<a href="#">127388</a>	W	1/18-2/15	9:15-10am	\$70/\$90 ●
<a href="#">127389</a>	Sa	1/14-2/11	9:15-10am	\$70/\$90 ●
<a href="#">127412</a>	Tu	2/21-3/21	12-12:45pm	\$70/\$90 ●
<a href="#">127413</a>	W	2/22-3/22	9:15-10am	\$70/\$90 ●
<a href="#">127414</a>	Sa	2/18-3/18	9:15-10am	\$70/\$90 ●

### Ackerman Adult and Tot Sports

Ages 3-5 with adult

Parents play an integral part in helping their tots develop basic sports movement and motor skills. Motor skills activities focus on hand-eye and hand-foot coordination. Sports equipment and instruction are provided to help guide your child through an introduction to organized sports. Adult participation is required. Location: Ackerman SFC. Min/Max 5/25. (rb)

#/Link	Day	Date	Time	R/NR
<a href="#">127784</a>	Sa	1/7-1/28	9-9:45am	\$40/\$55 ●
<a href="#">127785</a>	Sa	2/4-2/25	9-9:45am	\$40/\$55 ●
<a href="#">127786</a>	Sa	3/4-3/25	9-9:45am	\$40/\$55 ●

## ALL STAR SPORTS

### Super Sports

Ages 3-6

Designed for the child who wants to “take a shot” at different sports. Kids stay active and work on balance, motor skills and hand-eye coordination while learning the rules of baseball, football, floor hockey, soccer, basketball and more. Each class focuses on a new sport, basic rules, and mechanics while games are played that keep everyone moving. There’s no reason to pick a sport when they can play them all. Equipment is provided. Location: Main Street Recreation Center. Min/Max: 5/16. (dm)

#/Link	Day	Date	Time	R/NR
<b>Ages 3-4</b>				
<a href="#">127373</a>	W	1/18-2/15	3:30-4:15pm	\$70/\$90 ●
<a href="#">127375</a>	Th	1/12-2/9	10-10:45am	\$70/\$90 ●
<a href="#">127378</a>	F	1/13-2/10	2-2:45pm	\$70/\$90 ●
<a href="#">127399</a>	Sa	1/14-2/11	11:45am-12:30pm	\$70/\$90 ●
<a href="#">127400</a>	W	2/22-3/22	3:30-4:15pm	\$70/\$90 ●
<a href="#">127402</a>	Th	2/16-3/23	10-10:45am	\$80/\$100 ●
<a href="#">127405</a>	F	2/17-3/24	2-2:45pm	\$80/\$100 ●
<a href="#">127426</a>	Sa	2/18-3/18	11:45am-12:30pm	\$70/\$90 ●
<b>Ages 4-6</b>				
<a href="#">127374</a>	W	1/18-2/15	4:15-5:15pm	\$70/\$90 ●
<a href="#">127376</a>	Th	1/12-2/9	10:45-11:45am	\$70/\$90 ●
<a href="#">127377</a>	F	1/13-2/10	1-2pm	\$70/\$90 ●
<a href="#">127401</a>	W	2/22-3/22	4:15-5:15pm	\$70/\$90 ●
<a href="#">127403</a>	Th	2/16-3/23	10:45-11:45am	\$80/\$100 ●
<a href="#">127404</a>	F	2/17-3/24	1-2pm	\$80/\$100 ●



## ALL STAR SPORTS

### Basketball Jr. & Basketball Skills

Ages 3-8

Designed to teach the game of basketball at a basic level while making sure the players stay active and engaged. Fun, basketball-like games will be played to teach the importance of each skill. Trainers focus on basic mechanics to build confidence then add larger challenges as players progress. We will work on dribbling with each hand, passing and shooting technique, and understanding basic offense and defense. Basketball Skills is the next level of the Junior program and will build upon the basic skills learned in Basketball Jr. Location: Main Street Recreation Center. Min/Max: 5/16. (dm)

#/Link	Age	Day	Date	Time	R/NR
<b>Basketball Jr.</b>					
<a href="#">127379</a>	3-4	Tu	1/17-2/14	10-10:45am	\$70/\$90 ●
<a href="#">127380</a>	4-6	Tu	1/17-2/14	10:45-11:45am	\$70/\$90 ●
<a href="#">127381</a>	4-5	Th	1/12-2/9	2:45-3:30pm	\$70/\$90 ●
<a href="#">127382</a>	3-5	F	1/13-2/10	9:15-10am	\$70/\$90 ●
<a href="#">127406</a>	3-4	Tu	2/21-3/21	10-10:45am	\$70/\$90 ●
<a href="#">127407</a>	4-6	Tu	2/21-3/21	10:45-11:45am	\$70/\$90 ●
<a href="#">127408</a>	3-4	Th	2/16-3/23	2:45-3:30pm	\$80/\$100 ●
<a href="#">127409</a>	3-5	F	2/17-3/24	9:15-10am	\$80/\$100 ●
<b>Basketball Skills</b>					
<a href="#">127383</a>	6-8	Tu	1/17-2/14	5-6pm	\$70/\$90 ●
<a href="#">127384</a>	6-8	W	1/18-2/15	5:30-6:30pm	\$70/\$90 ●
<a href="#">127385</a>	5-7	Th	1/12-2/9	3:45-4:30pm	\$70/\$90 ●
<a href="#">127386</a>	5-7	F	1/13-2/10	10-11am	\$70/\$90 ●
<a href="#">127410</a>	6-8	Tu	2/21-3/21	5-6pm	\$70/\$90 ●
<a href="#">127411</a>	5-7	F	2/17-3/24	10-11am	\$80/\$100 ●

## ALL STAR SPORTS

### Baseball Skills

Ages 6-9

Kids learn the importance of proper throwing mechanics, rotational hitting, bunting, fielding, pitching, and catching. Speed and agility techniques are added to increase core strength and mobility for added bat speed, range in the field and linear speed for base running. In-game strategies are included to increase each player's overall knowledge. Participants must bring their own glove. Location: Main Street Recreation Center. Min/Max: 5/16. (dm)

#/Link	Day	Date	Time	R/NR
<a href="#">127417</a>	W	2/22-3/22	5:30-6:30pm	\$70/\$90 ●

### Ackerman Tot T-Ball

Ages 3-5

This class will introduce baseball fundamentals and game play including batting, catching, throwing, and base running and will include the principles of good sportsmanship in a non-competitive and fun atmosphere. Parents may drop off their toddlers. Location: Ackerman SFC. Min/Max 5/25. (rb)

#/Link	Day	Date	Time	R/NR
<a href="#">127787</a>	Sa	1/14-1/28	10-10:45am	\$30/\$45 ●
<a href="#">127788</a>	Sa	2/4-2/25	10-10:45am	\$40/\$55 ●
<a href="#">127789</a>	Sa	3/4-3/25	10-10:45am	\$40/\$55 ●



## ALL STAR SPORTS

## T-Ball Jr.

Ages 3-6

T-Ball can be a boring game if taught incorrectly. This approach to baseball is one that engages players regardless of skill level. They learn basic building blocks in a fun, safe environment. Program keeps players moving and learning even while in the dugout! Mechanics and hand eye coordination are the keys to early success. Players gain confidence as they learn the proper mechanics of catching, throwing, fielding, base running, and batting. Participants must bring their own glove. Location: Main Street Recreation Center. Min/Max: 5/16. (dm)

#/Link	Day	Date	Time	R/NR
<b>Ages 3-4</b>				
<a href="#">127397</a>	Tu	1/17-2/14	3-3:45pm	\$70/\$90 ●
<a href="#">127423</a>	W	2/22-3/22	10-10:45am	\$70/\$90 ●
<a href="#">127425</a>	Th	2/16-3/23	11:45am-12:30pm	\$80/\$100 ●
<b>Ages 4-6</b>				
<a href="#">127398</a>	Tu	1/17-2/14	3:45-4:45pm	\$70/\$90 ●
<a href="#">127424</a>	W	2/22-3/22	10:45-11:45am	\$70/\$90 ●

## FUTURE PROS

## Little Lakers Soccer

Ages 4-6

Introduce your little one to the world's most popular sport. Your child will learn not only basic skills, but also a lifetime love for soccer. Each participant receives a soccer ball. Location: Ackerman SFC. Min/Max 8/20. (gb)

#/Link	Day	Date	Time	R/NR
<a href="#">127618</a>	F	1/6-3/10	10:30-11:15am	\$110/\$160 ●

## FUTURE PROS

## Adult/Tot Lakers Soccer

Ages 2-3 with adult

This program provides the opportunity for you and your child to play soccer together. This class will work on simple motor skills such as dribbling, passing, and shooting. Adults participate with their child. Each participant receives a soccer ball. Location: Ackerman SFC. Min/Max: 8/20. (gb)

#/Link	Day	Date	Time	R/NR
<a href="#">127617</a>	F	1/6-3/10	9:30-10:15am	\$110/\$160 ●

## ALL STAR SPORTS

## Soccer Jr.

Ages 3-6

There's no sitting and waiting in the action-packed game of soccer! The game is taught by hiding drills in fun games and using association techniques on the players' levels. Simple foot skills, dribbling, passing, shooting, basic rules and even work on spreading the field are covered. Kids also learn teamwork and sportsmanship. Equipment is provided. Location: Main Street Recreation Center. Min/ Max: 5/16. (dm)

#/Link	Day	Date	Time	R/NR
<b>Ages 3-4</b>				
<a href="#">127391</a>	W	1/18-2/15	10-10:45am	\$70/\$90 ●
<a href="#">127393</a>	Th	1/12-2/9	11:45am-12:30pm	\$70/\$90 ●
<a href="#">127394</a>	F	1/13-2/10	2:45-3:30pm	\$70/\$90 ●
<a href="#">127395</a>	Sa	1/14-2/11	10-10:45am	\$70/\$90 ●
<a href="#">127418</a>	Tu	2/21-3/21	3-3:45pm	\$70/\$90 ●
<a href="#">127420</a>	F	2/17-3/24	2:45-3:30pm	\$80/\$100 ●
<a href="#">127421</a>	Sa	2/18-3/18	10:45-11:30am	\$70/\$90 ●
<b>Ages 4-6</b>				
<a href="#">127392</a>	W	1/18-2/15	10:45-11:45am	\$70/\$90 ●
<a href="#">127396</a>	Sa	1/14-2/11	10:45-11:45am	\$70/\$90 ●
<a href="#">127419</a>	Tu	2/21-3/21	3:45-4:45pm	\$70/\$90 ●
<a href="#">127422</a>	Sa	2/18-3/18	10:45-11:45am	\$70/\$90 ●





## ALL STAR SPORTS

### Floor Hockey Jr.

Ages 4-7

Learn the game before the skates go on. Players will learn the proper mechanics of stick handling, puck control, passing, and shooting. Offensive and defensive strategies will also be covered. Participants must bring a bike helmet and gloves. Shin, knee, and elbow pads are optional. Location: Main Street Recreation Center. Min/Max: 5/16. (dm)

#/Link	Day	Date	Time	R/NR
<b>Ages 4-5</b>				
<a href="#">127415</a>	Th	2/16-3/23	3:30-4:15pm	\$80/\$100 ●
<b>Ages 5-7</b>				
<a href="#">127390</a>	Th	1/12-2/9	4:30-5:15pm	\$70/\$90 ●
<a href="#">127416</a>	Th	2/16-3/23	4:15-5:15pm	\$80/\$100 ●

### Adult/Tot Hockey

Ages 3-4 with adult

Adults and tots are on the ice together. Both must wear skates. This class teaches coordination, balance, and agility in a fun atmosphere. Location: Center Ice of DuPage. Min/Max: 1/20. No class 1/11, 1/12, 1/14. (ks)

#/Link	Day	Date	Time	R/NR
<a href="#">127553</a>	Sa	1/7-2/25	9:10-9:40am	\$165 ●

### Little Hockey 1

Ages 3-5

For participants who have had no formal instruction. Kids will learn ice coordination, balance, and agility in a fun atmosphere while wearing hockey equipment. Hockey skates and helmet required. Hockey stick is optional. Location: Center Ice of DuPage. Min/Max: 1/20. No class 1/11, 1/12, 1/14. (ks)

#/Link	Day	Date	Time	R/NR
<a href="#">127557</a>	W	1/4-2/22	9:40-10:10am	\$155 ●
<a href="#">127558</a>	Th	1/5-2/23	4:30-5pm	\$155 ●
<a href="#">127559</a>	Sa	1/7-2/25	9:10-9:40am	\$155 ●

### Adult/Tot Ice Skating

Ages 3-4 with adult

Adults and tots are on the ice together. Both must wear skates. This class teaches ice coordination, balance, and agility in a fun atmosphere. Location: Center Ice of DuPage. Min/Max: 1/20. No class 1/11, 1/12, 1/14. (ks)

#/Link	Day	Date	Time	R/NR
<a href="#">127563</a>	Th	1/5-2/23	4:30-5pm	\$165 ●
<a href="#">127564</a>	Sa	1/7-2/25	10-10:30am	\$165 ●
<a href="#">127565</a>	Sa	1/7-2/25	11-11:30am	\$165 ●

### Ice Skating: Tot 1

Ages 4-5

This class teaches progressive levels 1 to 4 providing children with ice orientation, balance, agility, and fun. Skate rentals are available. Location: Center Ice of DuPage. Min/Max: 1/20. No class 1/11, 1/12, 1/14. (ks)

#/Link	Day	Date	Time	R/NR
<a href="#">127566</a>	W	1/4-2/22	9:40-10:10am	\$155 ●
<a href="#">127567</a>	Th	1/5-2/23	4:30-5pm	\$155 ●
<a href="#">127568</a>	Sa	1/7-2/25	10-10:30am	\$155 ●
<a href="#">127577</a>	Sa	1/7-2/25	11-11:30am	\$155 ●

### Special Skater

Ages 3 and up

This class will follow the Learn to Skate USA Adaptive and Basic Skills curriculum. Skating helps to foster social skills, balance, a team atmosphere, a sense of achievement, and fun. Location: Center Ice of DuPage. Min/Max: 1/20. No class 1/11, 1/12, 1/14. (ks)

#/Link	Day	Date	Time	R/NR
<a href="#">127587</a>	Sa	1/7-2/25	12:10-1pm	\$130 ●





# youth & teen sports

## Youth Dodgeball Tournament

Grades 3rd-6th

Dip, duck, and dive! The Glen Ellyn Youth Dodgeball Tournament is loaded with fun and competition. Brackets will be divided up based on age. Teams are guaranteed two matches followed by playoffs for those teams that qualify. Teams can have a maximum of 8 players; the maximum number of players allowed on the court at any given time is 6. Location: Ackerman SFC. Min/Max 6/12. (rb)

**Registration is completed on a team basis.**  
**The team captain should register your team.**

#/Link	Grade	Day	Date	Time	Fee
<a href="#">127625</a>	3rd-4th	Su	3/19	9am-3pm	\$100/team ●
<a href="#">127626</a>	5th-6th	Su	3/19	9am-3pm	\$100/team ●

## Ackerman Youth Run 4 Fun

Ages 9-13

An informal introduction to running for children of all fitness levels. Fun drills, games, and relay races create a positive atmosphere in a non-competitive environment. Location: Ackerman SFC. Min/Max 5/25. (rb)

#/Link	Day	Date	Time	R/NR
<a href="#">127793</a>	Tu	1/3-1/24	4-5pm	\$30/\$45 ●
<a href="#">127794</a>	Tu	2/7-2/28	4-5pm	\$30/\$45 ●
<a href="#">127795</a>	Tu	3/7-3/28	4-5pm	\$30/\$45 ●

## Strength & Conditioning Training

Ages 6-12

These classes are fun and include challenging workouts. Low, medium, and high intensity exercises are specifically designed to target the entire body utilizing a variety of traditional, functional, and strength exercises. Location: Ackerman SFC. Min/Max 4/10. (rb)

#/Link	Day	Date	Time	R/NR
<a href="#">127796</a>	W	1/4-1/25	4-5pm	\$80/\$95 ●
<a href="#">127797</a>	W	2/1-2/22	4-5pm	\$80/\$95 ●
<a href="#">127798</a>	W	3/1-3/22	4-5pm	\$80/\$95 ●

## Superhero Training

Ages 6-12

Avengers, assemble! Learn basic strength training techniques to achieve superhero status from Coach Mike, a former NPC bodybuilder. And because great power comes with great responsibility, he'll also go over proper and safe form when flexing your fun, new superhero skills. Location: Ackerman SFC. Min/Max 4/10. (rb)

#/Link	Day	Date	Time	R/NR
<a href="#">127799</a>	Tu/Th	1/3-1/26	5-6pm	\$80/\$120 ●
<a href="#">127800</a>	Tu/Th	1/31-2/23	5-6pm	\$80/\$120 ●

## Curling

Ages 12-18

Windy City Curling Club will teach you how to throw a 42lb. stone, sweep the ice, and basic strategy to get you started to learn to curl! The first week will cover game basics and safety instruction both on and off the ice. The following weeks are reserved for sweeping and throwing drills and gameplay. No experience or skates required. Age groups may be combined. Location: Windy City Curling Club, Villa Park. Min/Max: 6/24. (dt)

#/Link	Age	Day	Date	Time	R/NR
<a href="#">127807</a>	12-14	Tu	1/17-2/7	5-6pm	\$100/\$115 ●
<a href="#">127808</a>	14-18	Tu	1/17-2/7	5-6pm	\$100/\$115 ●
<a href="#">127809</a>	12-14	Tu	2/21-3/14	5-6pm	\$100/\$115 ●
<a href="#">127810</a>	14-18	Tu	2/21-3/14	5-6pm	\$100/\$115 ●

## Fencing - Olympic Swordplay

Ages 7-14

Learn the beginning skills and techniques of this unique sport without fighting. Fencing is an excellent sport for children and teens. It combines agility, strength, coordination, and critical thinking between attack and defensive strategies. Participants are eligible to participate in the Advanced class after completing at least one session of the Beginning course. Please ask the instructor for advanced placement. Equipment is not provided but can be rented from the Fencing Club. Contact them at (630) 678-0035 prior to the start of class. Location: Main Street Recreation Center. Min/Max: 4/12. No class 3/30 or 4/1. (dt)

#/Link	Day	Date	Time	R/NR
<b>Beginner</b>				
<a href="#">127661</a>	Sa	1/7-2/18	11:15am-12:10pm	\$92/\$138 ●
<a href="#">127662</a>	Sa	2/25-4/15	11:15am-12:10pm	\$92/\$138 ●
<b>Advanced</b>				
<a href="#">127663</a>	Th	1/5-2/16	6:15-7:05pm	\$92/\$138 ●
<a href="#">127664</a>	Th	2/23-4/13	6:15-7:05pm	\$92/\$138 ●

## field hockey

### RISE Field Hockey Winter Skills Program

Grades 4th-12th

Keep skills sharp for the spring season with RISE's Winter Skills class. The 4th-7th grade program focuses on recreational level skills and drills, and is appropriate for players of all levels from beginners to travel team members. Players in 8th-12th grade will work on high-level advanced skills such as shooting, hitting, corners, defensive tackling, and pulls that support competitive high school play; these practices are appropriate for all high school players and eighth graders of all levels intending to try out in high school. Location: Ackerman SFC. Min/Max: 5/36. (dt)

#/Link	Grade	Day	Date	Time	R/NR
<a href="#">127651</a>	9th-12th	Th	1/5-1/26	7:30-9pm	\$90 ●
<a href="#">127652</a>	4th-8th	Th	2/2-2/23	7:30-9pm	\$90 ●

### RISE Field Hockey Spring Recreational League

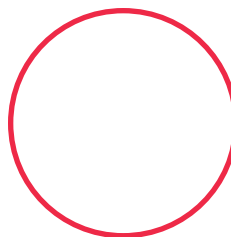
Grades 1st-8th

During the first two weeks, participants will focus on basic skill building and team formation. The remaining four weeks will be small-sided games. The full game schedule will be released in mid-April. Athletes need to purchase a reversible pinnie for practice (\$15) and will need to bring a stick, mouthguard, and shin guards. Location: Ackerman SFC. (dt)

#/Link	Grade	Day	Date	Time	R/NR
<a href="#">127653</a>	1st-4th	Th	4/6-5/11	6:30-7:30pm	\$84 ●
<a href="#">127654</a>	5th-8th	Th	4/6-5/11	7:30-9pm	\$155 ●







# lacrosse

## Bulldogs Lacrosse Winter Training Program

Grades 1st-8th

This program gives kids a chance to learn lacrosse fundamentals before the start of the spring season. Led by Bulldogs coaches, practices are divided into stations where groups focus on shooting, stick skills, passing, catching, and cradling. A mouthguard and stick are required for grades 1st-4th. Full equipment required for grades 5th-8th. Location: Glenbard West High School. Min/Max: 10/30. No class 1/16. (cb)

#/Link	Grade	Day	Date	Time	R/NR
<a href="#">127466</a>	1st-4th	M	1/9-2/13	7-8pm	\$85/\$135 ●
<a href="#">127467</a>	5th-8th	M	1/9-2/13	8-9pm	\$85/\$135 ●

## Bulldogs Lacrosse Preseason Training/Evaluations

Grades 3rd-8th

These training sessions help players become familiar with their teammates and coaches as they prepare for the start of the spring season. This program also serves as player evaluations to determine team placement. A stick, helmet, shoulder pads, arm pads, gloves, and mouth guard required by first day of practice. Location: True Lacrosse. Min/Max: 12/40. (cb)

#/Link	Grade	Day	Date	Time	R/NR
<a href="#">127469</a>	3rd-4th	Tu	2/28-3/21	5-6pm	\$65 ●
<a href="#">127470</a>	5th-6th	Tu/Th	2/28-3/23	6-7:30pm	\$100 ●
<a href="#">127471</a>	7th-8th	Tu/Th	2/28-3/23	7:30-9pm	\$100 ●

## Bulldogs Lacrosse: Spring House League

Grades 1st-2nd

Players meet on Tuesday evenings for practice and to focus on building game play fundamentals such as cradling, scooping, passing, and catching. April practices are indoors on the turf at the Ackerman SFC. May-June practices are held at Newton Park. House League games are played on Saturday mornings at Ackerman SFC or Newton Park. There is a \$75 fee for cancellations after January 31 and no refunds after March 31. A stick, helmet, shoulder pads, arm pads, gloves, and mouth guard required by the first day of practice. (cb)

**Regular Registration:** Ends 1/31 (first come, first serve)

**Late Registration:** 2/1 or later (if players are needed)

#/Link	Day	Date	Time	R/NR
<a href="#">127472</a>	Tu/Sa	4/4-6/10	6-7:30pm	\$175 ●

## Bulldogs Lacrosse: Spring IBLA League

Grades 3rd-8th

Players participate in 90-minute practices at Newton Park on Tuesdays and Thursdays, in approximately 10 league games through the Illinois Boys Lacrosse Association, and in a single-elimination tournament in early June. Practice dates and times are outlined in the table below; game schedules and locations are posted on the IBLA website in late March (home games played at Newton Park, away games at neighboring towns). Optional travel tournaments will be offered (additional fees apply). There is a \$75 fee for cancellations after January 31 and no refunds after March 31. A stick, helmet, shoulder pads, arm pads, gloves, and mouth guard required by the first day of practice. (cb)

**Regular Registration:** Ends 1/31 (first come, first serve)

**Late Registration:** 2/1 or later (if players are needed)

#/Link	Grade	Day	Date	Time	R/NR
<a href="#">127473</a>	3rd-4th	Tu/Th	4/4-6/10	6pm-7:30pm	\$250 ●
<a href="#">127474</a>	5th-6th	Tu/Th	4/4-6/10	6pm-7:30pm	\$250 ●
<a href="#">127475</a>	7th-8th	Tu/Th	4/4-6/10	4:30pm-6pm	\$250 ●



# volleyball

## Cyclones Jrs. Volleyball Skills & Drills

Grades 3rd-8th

One of the top volleyball clubs in the area, the Cyclones, will be teaching a fun and fundamental-style volleyball program to youth through tweens. With its unique combination of drills, competition and instruction, this program focuses on breaking volleyball down into different skill stations. These stations offer the most effective way to capitalize on skills, knowledge, drills, and techniques. No equipment needed. Location: College of DuPage Physical Education Center. Min/Max: 6/25. (dt)

#/Link	Grade	Day	Date	Time	R/NR
<a href="#">127655</a>	3rd-4th	M	1/23-2/6	6-7:15pm	\$68/\$101 ●
<a href="#">127656</a>	5th-6th	M	1/23-2/6	6-7:15pm	\$68/\$101 ●
<a href="#">127657</a>	7th-8th	M	1/23-2/6	6-7:15pm	\$68/\$101 ●

## Cyclones Jrs. Volleyball League

Grades 3rd-6th

This fun recreational league, led by the Cyclones Volleyball Club, is great for beginner and developing players. Practices are held on Monday evenings, with games on Tuesdays. The game schedule will be finalized in mid-March. Teams will be formed following a player evaluation on February 27. Team t-shirts will be provided to all participants. Players receive professional training from Cyclones' coaches and parent volunteers will assist with practice and facilitate games. Email [dtripp@gepark.org](mailto:dtripp@gepark.org) if you are interested in volunteering to coach. Location: College of DuPage Physical Education Center. (dt)

**Regular Registration:** Ends 2/12 (first come, first serve)  
**Late Registration:** 2/13 or later (if players are needed)

#/Link	Grade	Time	R/NR
<a href="#">127658</a>	3rd-4th Co-Ed	Between 6-8pm	\$140/\$190 ●
<a href="#">127659</a>	5th-6th Girls	Between 6-8pm	\$140/\$190 ●
<a href="#">127660</a>	5th-6th Boys	Between 6-8pm	\$140/\$190 ●

## Girls Lacrosse: Winter Training

Grades 1st-8th

Learn lacrosse fundamentals before the start of the spring season. Led by East Ave. Lacrosse coaches, practices are divided into stations where groups focus on shooting, stick skills, passing, and catching. A stick, goggles, and a mouth guard are required. Location: Ackerman SFC. Min/Max: 6/15. (cb)

#/Link	Grade	Day	Date	Time	R/NR
<a href="#">127480</a>	1st-4th	Sa	1/7-2/25	11am-12pm	\$120 ●
<a href="#">127479</a>	5th-8th	Sa	1/7-2/25	12-1pm	\$120 ●

## Girls Lacrosse: Spring League

Grades Pre-K to 8th

Pre-K and K practice on Saturdays; grades 1st-8th practice on Saturdays with scrimmage games being played on Sundays between 11am-1pm (full schedule to be sent prior to the start of the season). Additional days and times may be added for scrimmage games later in the season. Participants must have a stick, goggles, and mouth guard. Location: Newton Park. (cb)

#/Link	Grade	Date	Time	R/NR
<a href="#">127483</a>	Pre-K & K	4/8-5/20	Sa: 3-4pm	\$85 ●
<a href="#">127482</a>	1st-4th	4/8-5/21	Sa: 3-4pm Su: Varies	\$165 ●
<a href="#">127481</a>	5th-8th	4/8-5/21	Sa: 4:30-6pm Su: Varies	\$200 ●



# baseball

## Youth Baseball League

Grades Pre-K to 8th (as of 9/1/22)

Youth Baseball is a Glen Ellyn Park District program run with the assistance of the Glen Ellyn Youth Baseball Association (GEYBA), a volunteer organization that strives to develop skills while promoting teamwork, sportsmanship, discipline, citizenship, and well-being. Parent participation is the heart of Glen Ellyn baseball. All GEYBA committee members and coaches are volunteers. Teams are formed in early March and practices begin in April. The season runs through the end of June. Teams are formed by grade, not skill-level. Requests to “play-up” based on age/skill exceptions will not be granted. (cb)

### LEAGUE DESCRIPTIONS

**T-BALL 1 (Pre-K/Ages 4-5):** Kids learn to hit the ball off a tee. There is no catcher, and everyone bats and plays the field. Teams are divided up by schools that players will attend.

**T-BALL 2 (Kindergarten):** Kids hit off a tee but by the end of the year, a coach may pitch the ball from a few feet away. There is no catcher, and everyone plays the field and bats. Teams are divided up by schools.

**BANTAM (1st Grade):** Pitching machines are used the entire season, there is no catcher, and everyone plays the field and bats. Teams are divided up by schools.

**SHETLAND (2nd Grade):** A combination of kids/machine pitch. Ten players are allowed on the field including a catcher. Teams are divided up by multiple schools.

**MAVERICK (3rd Grade) & STALLION (4th Grade):** Players are drafted by ability based on a player evaluation. A post-season tournament determines a league champion for both. Teams are formed with no relation to schools, utilizing a full draft.

**MUSTANG (5th/6th Grade) & PONY (7th/8th Grade):** Age groups are combined, and players are drafted by ability based on a player evaluation. A post-season tournament determines a league champion.



### LEAGUE REGISTRATION

**Regular Registration:** Ends 2/12 (first come, first serve)

**Late Registration:** 2/13 or later (if players are needed)

#/Link	Level	Age/Grade	Games Begin	R/NR
<a href="#">127437</a>	T-Ball 1	Age 4-5	4/22	\$165 ●
<a href="#">127438</a>	T-Ball 2	Age 6 (K)	4/22	\$165 ●
<a href="#">127439</a>	Bantam	1st	4/22	\$165 ●
<a href="#">127440</a>	Shetland	2nd	4/15	\$165 ●
<a href="#">127441</a>	Maverick	3rd	4/15	\$215 ●
<a href="#">127442</a>	Stallion	4th	4/15	\$215 ●
<a href="#">127443</a>	Mustang	5th-6th	4/15	\$215 ●
<a href="#">127444</a>	Pony	7th-8th	4/15	\$215 ●

### PLAYER EVALUATIONS

Player Evaluations will be held for the Maverick, Stallion, Mustang, and Pony leagues at Ackerman SFC on the following dates. Additional details available at [www.glenellynbaseball.com](http://www.glenellynbaseball.com).

**Maverick/Stallion/Mustang**  
Last name beginning A-K:  
February 19, 2023, 9am

**Pony**  
February 19, 2023, 11:15am

Last name beginning L-Z:  
February 26, 2023, 9am

## Youth Umpire Program

Umpires work under the supervision of Official Finders and are eligible to work games in the Maverick, Stallion, Mustang, and Pony leagues, Rebels Travel games, and Glen Ellyn Classic Tournament games. Experience and performance, not age (or grade) determines at what level league an umpire works. Should an umpire have any questions, please reach out to Tim James of Official Finders at [tj@officialfinders.com](mailto:tj@officialfinders.com) for more information.



# softball

## Girls Softball League

Grades Pre-K to 8th (as of 9/1/22)

Run with the assistance of the Glen Ellyn Girls Softball Association, our softball program gives girls a chance to play and have fun while learning softball skills, teamwork, game rules, and sportsmanship. Leagues are recreational at the younger ages and become progressively more competitive as players grow older. We strive to provide development and options to keep it fun as our players grow older and play to their level of competition.

The spring program is the House League. Teams typically play two games per week (one weeknight/one Saturday) at Ackerman Park. Teams are formed in mid-March and practices begin in April. The season runs through the end of June. Team shirts and protective equipment are provided by age group. Girls must supply their own gloves, bats, and helmets. The program is highly dependent on volunteer coaches and assistants. (dt)

**Regular Registration:** Ends 2/12 (first come, first serve)

**Late Registration:** 2/13 or later (if players are needed)

#/Link	Level	Age/Grade	Games Begin	R/NR
<a href="#">127848</a>	Pixie	Pre-K to K (age 5-6)	4/15	\$165 ●
<a href="#">127849</a>	Pigtail 1	Grade 1	4/15	\$165 ●
<a href="#">127850</a>	Pigtail 2	Grade 2	4/15	\$165 ●
<a href="#">127851</a>	Ponytail	Grade 3-4	4/15	\$215 ●
<a href="#">127852</a>	Bobtail	Grade 5-6	4/15	\$215 ●
<a href="#">127853</a>	Junior	Grade 7-8	4/15	\$215 ●

## Softball Pitching Lessons

Ages 8-17

Learn new techniques or sharpen skills during the offseason with Pitching Coach Scott Swords. Pitchers must supply their own catchers. Location: Ackerman SFC. Min/Max: 2/5. No class 1/16 or 2/20. (dt)

#/Link	Day	Date	Time	R/NR
<a href="#">127485</a>	M	1/9-3/13	6-6:45pm	\$100 ●
<a href="#">127486</a>	M	1/9-3/13	6:45-7:30pm	\$100 ●
<a href="#">127487</a>	M	1/9-3/13	7:30-8:15pm	\$100 ●
<a href="#">127488</a>	M	1/9-3/13	8:15-9pm	\$100 ●

# rugby

## Rookie Rugby

Grades 3rd-4th

Rookie Rugby is a non-contact version of rugby that is played in elementary school until players are ready to be introduced to the traditional contact version of the game. The program emphasizes individual and team skill development, teamwork, sportsmanship, rugby etiquette and conditioning. A mouth guard and soccer/football cleats are required. Location: Newton Park. (dt)

#/Link	Day	Date	Time	R/NR
<a href="#">127650</a>	W	4/19-5/24	6-7pm	\$75 ●

## Stingers & Ducks Rugby

Grades 5th-12th

Practices are held three days per week on Monday, Wednesday, and Friday at Newton Park. Games take place on weekends at various locations. A mouth guard and soccer/football cleats are required. A t-shirt, shorts and socks will be supplied. A \$75 fee will be charged for cancellations after February 27. Location: Newton Park. (dt)

Participants are also required to register with USA Rugby ([rugbyillinois.com](http://rugbyillinois.com)) and pay a separate fee.

**Regular Registration:** Ends 2/26 (first come, first serve)

**Late Registration:** 2/27 or later (if players are needed)

#/Link	Grade	Date	R/NR Regular	R/NR Late
<a href="#">127646</a>	5th-6th Stingers	2/27-6/3	\$225	\$275 ●
<a href="#">127647</a>	7th-8th Stingers	2/27-6/3	\$225	\$275 ●
<a href="#">127648</a>	9th-10th Ducks	2/27-6/3	\$325	\$375 ●
<a href="#">127649</a>	11th-12th Ducks	2/27-6/3	\$325	\$375 ●





# football

## Ackerman Youth Flag Football

Ages 6-10

Participants will be taught the fundamentals of football on the offensive and defensive sides of the ball and will go through a variety of drills, games, and contests to develop their skill set. Location: Ackerman SFC. Min/Max 5/25. (rb)

#/Link	Day	Date	Time	R/NR
<a href="#">127790</a>	Th	1/5-1/26	4-5pm	\$40/\$55 ●
<a href="#">127791</a>	Th	2/2-2/23	4-5pm	\$40/\$55 ●
<a href="#">127792</a>	Th	3/2-3/23	4-5pm	\$40/\$55 ●

## Golden Eagles Flag Football

Grades 1st-6th (as of 8/31/23)

Players learn and develop the fundamentals of football, teamwork, sportsmanship, and leadership in a supervised, organized, and safe environment. The flag program begins in August and ends in mid-October with practices held weekly. Games/scrimmages are played on weekends at Newton Park and during the week at Glenbard South High School.

**Registration Deadline:** Teams are filled on a first-come basis until June 1. Beginning June 2, registration will remain open if players are needed to fill out teams and may close at any time. (cb)

#/Link	Grade	R/NR
<a href="#">127446</a>	1st-2nd Co-Ed	\$235 ●
<a href="#">127447</a>	3rd-4th Co-Ed	\$235 ●
<a href="#">127835</a>	3rd-4th Girls	\$235 ●
<a href="#">127448</a>	5th-6th Co-Ed	\$235 ●
<a href="#">127836</a>	5th-6th Girls	\$235 ●

## Golden Eagles Tackle Football

Ages 7-14 (as of 8/1/23)

The tackle program participates in the Bill George Youth Football League. Players learn and develop the fundamentals of tackle football, teamwork, sportsmanship, and leadership in a supervised, organized, and safe environment. This is a travel league that plays teams from surrounding suburbs. The tackle program begins the last week of July/first week of August and ends in early November. Teams practice daily in August and three days a week when school starts through the end of the season. Games are played on weekends at Newton Park and in surrounding communities. Teams are built based on age, weight restriction, ability, and experience. Coaching candidates are encouraged to apply. Additional details are available online at the Glen Ellyn Golden Eagles website at [www.glenellynfootball.com](http://www.glenellynfootball.com). (cb)

**Registration Deadline:** Teams are filled on a first-come basis until June 1; however, the BGYFL limits roster sizes to a maximum of 26 players per team and registration may close early if maximum roster sizes are reached. Beginning June 2, registration will remain open if players are needed to fill out teams and may close at any time. (cb)

#/Link	Level	Age	Weight	R/NR
<a href="#">127449</a>	BG10U	Not 11	98 lbs.	\$450 ●
<a href="#">127450</a>	BG11U	Not 12	108 lbs.	\$450 ●
<a href="#">127451</a>	JV	Not 13	123 lbs.	\$450 ●
<a href="#">127452</a>	Varsity	Not 15	158 lbs.	\$450 ●

# Soccer



## FUTURE PROS

### Junior Lakers Soccer

Ages 4-6

Weekly clinics focus on building individual and team soccer skills. Instruction, drills, and games will focus on dribbling, passing, shooting, defending, and offensive attacking skills. Groups will be divided for skill-level-appropriate training each week. Each player is required to bring their own ball, cleats, shin guards, and water for each class. Location: Ackerman SFC. Min/Max 8/20. (gb)

#/Link	Day	Date	Time	R/NR
<a href="#">127619</a>	F	1/6-3/10	4-5pm	\$110/\$160 ●

### Winter House Soccer League

Ages 5-11

This is a great opportunity for kids to keep their soccer skills fresh during winter. Each week, players will work on a particular skill and then scrimmage at the end of class. This league is instructed by Future Pros trainers, the same trainers used by the Glen Ellyn Lakers travel teams. Each player is required to bring their own ball, shoes, shin guards, and water for each class. Location: Ackerman SFC. Min/Max 10/50. (gb)

#/Link	Age	Day	Date	Time	R/NR
<a href="#">127621</a>	5-7	Th	1/5-3/9	5-6pm	\$100/\$150 ●
<a href="#">127622</a>	8-11	Th	1/5-3/9	6-7:30pm	\$125/\$190 ●

### Lakers Academy

Grades 1st-2nd

Lakers Academy is a program designed to prepare players for the full-time Glen Ellyn Lakers travel soccer program. Training and games will be run by our Future Pros travel soccer trainers. Players are required to bring their own ball, cleats, shin guards, and water for each class. Location: Ackerman SFC. Min/Max: 10/40. (gb)

#/Link	Day	Date	Time	R/NR
<a href="#">127623</a>	M	1/9-3/13	4:30-5:30pm	\$250 ●

### House Soccer League: Spring

Grades Pre-K to 10th

Practices start the week of April 3 and are held once a week according to the volunteer coach's schedule. Games are played at Ackerman Park between 8am and 3pm on Saturdays from April 8 to May 27; Pre-K soccer will play on Saturdays only, with teams practicing prior to kickoff. Notification of team placement will be sent out between March 20-24; email [gbillings@gepark.org](mailto:gbillings@gepark.org) if you have not heard from a coach by March 24. Participants are may make one buddy request. If a request is not mutual between two participants, it is not guaranteed that they will be placed on the same team. (gb)

**Regular Registration:** Ends 2/12 (first come, first serve)

**Late Registration:** 2/13-3/3 (if players are needed)

#/Link	Grade	Regular R/NR	Late R/NR
<a href="#">127636</a>	Co-Rec Pre-K	\$60/\$90	\$85/\$115 ●
<a href="#">127635</a>	Co-Rec K	\$80/\$110	\$105/\$135 ●
<a href="#">127627</a>	Co-Rec 1st	\$80/\$110	\$105/\$135 ●
<a href="#">127628</a>	Co-Rec 2nd	\$80/\$110	\$105/\$135 ●
<a href="#">127629</a>	Co-Rec 3rd-4th	\$105/\$135	\$130/\$160 ●
<a href="#">127630</a>	Girls 3rd-4th	\$105/\$135	\$130/\$160 ●
<a href="#">127631</a>	Co-Rec 5th-6th	\$105/\$135	\$130/\$160 ●
<a href="#">127632</a>	Girls 5th-6th	\$105/\$135	\$130/\$160 ●
<a href="#">127633</a>	Co-Rec 7th-8th	\$105/\$135	\$130/\$160 ●

### House Soccer League Clinics *Free!*

Ages 4-11

These free clinics are instructed by professional soccer trainers from the Future Pros training staff - the same who coach and train the Lakers travel teams. Participants must be enrolled in the Spring House Soccer season to participate. Space is limited and registration is required. Location: Ackerman Park. Min/Max: 15/50. (gb)

#/Link	Day	Date	Time	R/NR
<b>Ages 4-6</b>				
<a href="#">127637</a>	M	4/17	4:30-5:30pm	Free w/registration ●
<a href="#">127638</a>	M	5/1	4:30-5:30pm	Free w/registration ●
<a href="#">127639</a>	M	5/8	4:30-5:30pm	Free w/registration ●
<a href="#">127640</a>	M	5/15	4:30-5:30pm	Free w/registration ●
<b>Ages 7-11</b>				
<a href="#">127641</a>	M	4/17	5:30-6:30pm	Free w/registration ●
<a href="#">127642</a>	M	5/1	5:30-6:30pm	Free w/registration ●
<a href="#">127643</a>	M	5/8	5:30-6:30pm	Free w/registration ●
<a href="#">127644</a>	M	5/15	5:30-6:30pm	Free w/registration ●





# hockey & ice skating

## Ice Skating: Basic 1

Ages 6-13

Intended for students with no previous formal instructions. Participants will learn 1- and 2-foot glides, forward and backward swizzles, and backward wiggles. Skate rentals are available. Location: Center Ice of DuPage. Min/Max: 1/20. No class 1/11, 1/12, 1/14. (ks)

#/Link	Day	Date	Time	R/NR
<a href="#">127569</a>	W	1/4-2/22	9:40-10:20am	\$165 ●
<a href="#">127570</a>	Th	1/5-2/23	4:30-5:10pm	\$165 ●
<a href="#">127571</a>	Th	1/5-2/23	5:30-6:10pm	\$165 ●
<a href="#">127572</a>	Sa	1/7-2/25	10-10:40am	\$165 ●
<a href="#">127578</a>	Sa	1/7-2/25	11-11:40am	\$165 ●

## Beginner Hockey

Ages 6-13

For participants who have had no formal instruction. Kids will learn basic forward and backward skating while wearing hockey equipment. Hockey skates and helmet required. Hockey stick is optional. Location: Center Ice of DuPage. Min/Max: 1/20. No class 1/11, 1/12, 1/14. (ks)

#/Link	Day	Date	Time	R/NR
<b>Co-ed</b>				
<a href="#">127554</a>	W	1/4-2/22	9:40-10:20am	\$165 ●
<a href="#">127555</a>	Th	1/5-2/23	4:30-5:10pm	\$165 ●
<a href="#">127560</a>	Sa	1/7-2/25	9:10-9:50am	\$165 ●
<b>Girls</b>				
<a href="#">127562</a>	Th	1/5-2/23	4:30-5:10pm	\$165 ●
<a href="#">127561</a>	Sa	1/7-2/25	9:10-9:50am	\$165 ●

## Beginner Hockey: Teen/Adult

Ages 14 and up

This class is “at your own pace” and is perfect for beginners, continuing adult skaters, or skaters who are returning to the ice after years of hiatus. Location: Center Ice of DuPage. Min/Max: 1/20. No class 1/11, 1/12, 1/14. (ks)

#/Link	Day	Date	Time	R/NR
<a href="#">127556</a>	Sa	1/7-2/25	8:10-9:10am	\$175 ●

## Ice Skating: Teen/Adult Basic 1

Ages 14 and up

This class is “at your own pace” and is perfect for beginners, continuing skaters, or skaters who are returning to the ice after years of hiatus. Location: Center Ice of DuPage. Min/Max: 1/20. No class 1/11, 1/12, 1/14. (ks)

#/Link	Day	Date	Time	R/NR
<a href="#">127573</a>	Th	1/5-2/23	4:30-5:10pm	\$165 ●
<a href="#">127574</a>	Th	1/5-2/23	5:30-6:10pm	\$165 ●
<a href="#">127575</a>	Sa	1/7-2/25	10-10:40am	\$165 ●
<a href="#">127576</a>	Sa	1/7-2/25	11-11:40am	\$165 ●



# martial arts

## Taekwondo

New students are required to purchase a uniform prior to the first class from the instructor. This fee is not included in the registration fee. Colored belt students are required to have complete sparring gear.

### Little Dragons Taekwondo

Ages 4-5

This introductory class is designed to captivate the interest of our youngest students. Skills are developed through gentle instruction and appropriate games for their ability. This class focuses on developing balance, coordination, and respect for the discipline of martial arts training. All belts. Location: Spring Avenue Recreation Center. Min/Max: 4/15. (dt)

#/Link	Day	Date	Time	R/NR
<a href="#">127718</a>	Sa	1/7-3/18	11:30am-12:20pm	\$110/\$138 •

### Adult/Child Taekwondo

Ages 7 and up with adult

This class provides families with a fun opportunity to spend time together while improving physical and mental conditioning through cardiovascular drills, calisthenics, and traditional taekwondo techniques including punching, kicking, and blocking. Fee is listed per person. All belts. Location: Spring Avenue Recreation Center. Min/Max: 4/15. (dt)

#/Link	Day	Date	Time	R/NR
<a href="#">127720</a>	Sa	1/7-3/18	12:25-1:15pm	\$110/\$138 •

### Early Taekwondo

Ages 6-7

Designed especially for the younger children of 6-7 years, this program helps kids develop conditioning, coordination, listening skills, and self-confidence through creative activities. All belts. Location: Spring Avenue Recreation Center. Min/Max: 4/12. (dt)

#/Link	Day	Date	Time	R/NR
<a href="#">127719</a>	Sa	1/7-3/18	11:30am-12:20pm	\$110/\$138 •

### Youth Taekwondo

Ages 8-13

This program includes a balanced cardiovascular workout, including punching, kicking, and blocking skills, using the taekwondo tradition, and self-control. Participants will improve coordination, power of concentration, balance, and both physical and mental discipline. All belts. Location: Spring Avenue Recreation Center. Min/Max: 4/12. (dt)

#/Link	Day	Date	Time	R/NR
<a href="#">127721</a>	Sa	1/7-3/18	12:25-1:15pm	\$110/\$138 •



## Shotokan Karate

### Pre-Karate

Ages 4-6

Children will develop agility, strength, and coordination skills through fun and creative activities. Watch your child blossom while learning karate and having a blast at the same time. Uniforms and belt testing are options available through the instructor for an additional fee. Min/Max: 5/10. (dt)

### Adult/Child Karate

Ages 7 and up

Learning martial arts is an excellent opportunity to spend quality time with your child while conditioning muscles, developing coordination, and improving cardiovascular fitness. Uniforms and belt testing are options available through the instructor for an additional fee. Fees are per person. Min/Max: 5/15. (dt)

## Youth Karate

Ages 7-14

Youth karate classes offer a good mix of strength training, with cardiovascular and flexibility exercises. Children increase their coordination, agility and poise, as well as learn lasting personal safety skills. They also benefit from the mental stimulation of learning the choreographed moves of the kata and the discipline of conforming to the class rules. Min/Max: 5/15. (dt)

### Adult Karate

Ages 15 and up

In addition to teaching self-defense skills, karate develops flexibility, muscle tone and improves core strength. Continuing students need to purchase additional protective gear. Uniforms and belt testing are options available through the instructor for an additional fee. Min/Max: 8/25. (dt)



#/Link	Level	Day	Date	Time	R/NR
<b>Pre-Karate at Wheaton Park District Community Center</b>					
<a href="#">127722</a>	Beginner/Continuing	W	1/4-3/22	4:30-5:15pm	\$162/\$243 ●
<a href="#">127723</a>	Inter/Adv.	W	1/4-3/22	5:15-6pm	\$162/\$243 ●
<b>Adult/Child Karate at Wheaton Park District Community Center</b>					
<a href="#">127724</a>	Beg./Nov. White-Orange	Sa	1/7-3/25	2-2:55pm	\$162/\$243 ●
<a href="#">127725</a>	Intermediate Yellow-Purple	Sa	1/7-3/25	3-3:55pm	\$162/\$243 ●
<a href="#">127726</a>	Advanced Brown & Up	Sa	1/7-3/25	4-4:55pm	\$162/\$243 ●
<b>Youth/Adult Karate at Main Street Recreation Center</b>					
<a href="#">127727</a>	Beg./Nov. White-Yellow	W	1/4-3/22	6:45-7:40pm	\$162/\$243 ●
<a href="#">127728</a>	Int./Adv. Blue-Black	W	1/4-3/22	7:45-8:40pm	\$162/\$243 ●
<b>Youth Karate at Wheaton Park District Community Center</b>					
<a href="#">127729</a>	Beg./Nov. White-Orange	Sa	1/7-3/25	2-2:55pm	\$162/\$243 ●
<a href="#">127730</a>	Intermediate Yellow-Purple	Sa	1/7-3/25	3-3:55pm	\$162/\$243 ●
<a href="#">127731</a>	Advanced Brown & Up	Sa	1/7-3/25	4-4:55pm	\$162/\$243 ●
<b>Adult Karate at Main Street Recreation Center</b>					
<a href="#">127732</a>	Int./Adv. Blue-Black	W	1/4-3/22	8:45-10pm	\$186/\$279 ●



**YOU MAY ALSO LIKE**

- Adult Hockey & Ice Skating.....pg. 58**
- Martial Arts.....pg. 59**
- Platform Tennis Leagues/Classes....pg. 75**

# adult sports

## Men's Basketball League

Ages 18 and up  
 Teams play an 8-game regular season followed by a single-elimination postseason tournament for teams that qualify. Email [dtripp@gepark.org](mailto:dtripp@gepark.org) for more details. Location: Ackerman SFC. Min/Max 4/10. (dt)

**Register by 12/30**

#/Link	League	Date	R/NR
<a href="#">127645</a>	Monday PM Open	1/9-3/20	\$600/team ●

## Pickleball Start/Restart

Ages 18 and up  
 Interested in joining one of the fastest growing sports? Whether you're new to the sport of Pickleball or need a refresher, Pickleball Start/Restart covers the basic skills, grips, and strategies to the game. Players are required to provide their own paddle. Location: Ackerman SFC. Min/Max 6/12. (bt)

#/Link	Day	Date	Time	R/NR
<a href="#">127613</a>	F	1/6-2/24	9-10am	\$135/\$170 ●
<a href="#">127614</a>	F	1/9-2/24	10-11am	\$135/\$170 ●

## Paddles and Pours

Ages 21 and up  
 Try out platform tennis while enjoying local brews from Two Hound Red. New players and veterans of the game will get a chance to learn about platform tennis from one of our Platform Tennis Pros before relaxing in our modern paddle hut with a craft beer. One beer is included in the registration fee, additional beers are available for purchase. Dress for the weather – platform tennis is an outdoor sport. Location: Platform Tennis Center. Min/Max: 10/50. (Is)

#/Link	Day	Date	Time	R/NR
<a href="#">127733</a>	F	2/10	7-8:30pm	\$20/\$25 ●

## Adult Dodgeball Tournament

Ages 18 and up  
 Relive your memories of middle school gym class! Run, throw, dodge, and duck your way to victory in our Adult Dodgeball Tournament at Ackerman SFC. Teams are guaranteed two matches followed by playoffs for those teams that qualify. There is an 8-player maximum per team as matches are played with six on the court. Location: Ackerman SFC. Min/Max 6/12. (rb)

**Registration is completed on a team basis. The team captain should register your team.**

#/Link	Day	Date	Time	R/NR
<a href="#">127624</a>	Su	3/19	9am-12pm	\$100/team ●



# dance academy



Please contact Katy Speck at [kspeck@gepark.org](mailto:kspeck@gepark.org) with questions.

## class descriptions

### Adult/Tot Dance

Designed for our littlest dancers, this class introduces basic ballet, coordination, and gross motor skills through creative movement and interactive songs with a caregiver present. Ballet shoes are optional for adults/caregivers.

### Tiny Tot

Your child will learn dance concepts and develop rhythm, coordination, and balance while moving and grooving to music and using creative props to inspire imagination. Adults are required to stay within the building for the duration of each class, no exceptions. Children must be able to attend class without an adult/caregiver present.

### Creative Movement

This class develops motor skills, balance, cognitive awareness, creativity, rhythm, musicality, and self-esteem. Adults are required to stay within the building for the duration of each class, no exceptions. Children must be able to attend class without an adult/caregiver present.

### Creative Hip Hop

This class develops creativity and musicality with a special focus on the rhythm, muscle memory, and coordination found in this urban dance style. Adults are required to stay within the building for the duration of each class, no exceptions. Children must be able to attend class without an adult/caregiver present.

### Pre-Ballet/Tap

This class is divided into two units: ballet and tap. Your child will be taught core concepts, age-appropriate technique, and vocabulary in these two genres of dance.

### Intro Ballet/Jazz

Your child will learn core concepts from both ballet and jazz. Both techniques will be taught in class at an age-appropriate level.

## Ballet 1

This class will build a solid foundation of ballet terms and technique. Your child will learn to have musicality within their movement and gain strength. We will focus on core ballet concepts and build upon their previous dance knowledge.

## Ballet 2

This class will use the foundations built in Ballet 1 but continue to grow and expand knowledge and ballet technique. Your child will learn more complex movement, and skills.

## Jazz 1

This class is a focus on jazz technique and style, and growing confidence in movement. Your child will learn basic technique to rhythmic songs, while also finding their own way of moving.

## Tap 1

Your child will be taught core concepts, age-appropriate technique, and vocabulary in tap.

## Hip Hop 1

Your child will learn the basics of hip hop in this class. This high energy style of dance encompasses many different urban dance styles and focuses on rhythm, muscle memory, and coordination. Gym shoes or sneakers are usually worn.

## Modern

This class will center around modern techniques and finding your dancer's center. It will help dancers to find meaning in the movements they are doing and express that outwardly. We explore new ways of moving while building core strength and flexibility.

## Contemporary

This class merges the techniques of ballet, modern, lyrical, and jazz styles. Participants will learn to dance with fluid movements characterized by the expression of their emotions.



# Dance Recital Programs

This year's recital theme is Candyland. The recital will take place at 11am on Saturday, June 3. A mandatory dress rehearsal will take place Friday, June 2.

Costume fee (\$65) is included in the registration fee. Dancers will need to supply their own shoes and tights. Registration will be accepted through February 1. Costume refunds will not be given after February 20. Min/Max: 5/12. Location: Spring Avenue Recreation Center. No class 3/27-4/1. (ks)

#/Link	Class	Day	Age	Date	Time	R/NR
<a href="#">127590</a>	Creative Movement	M	3-4	1/9-5/22	4:30-5:15pm	\$265/\$300 ●
<a href="#">127593</a>	Pre-Ballet/Tap	M	4-5	1/9-5/22	5:20-6:05pm	\$265/\$300 ●
<a href="#">127594</a>	Ballet 1	M	5-6	1/9-5/22	6:10-6:55pm	\$265/\$300 ●
<a href="#">127595</a>	Ballet 2	M	7-8	1/9-5/22	7-8pm	\$325/\$375 ●
<a href="#">127597</a>	Tap 1	Tu	5-6	1/10-5/23	5:20-6:05pm	\$265/\$300 ●
<a href="#">127598</a>	Modern	Tu	7-9	1/10-5/23	6:10-6:55pm	\$265/\$300 ●
<a href="#">127599</a>	Jazz 1	Tu	7-9	1/10-5/23	7-8pm	\$325/\$375 ●
<a href="#">127591</a>	Creative Movement	W	3-4	1/11-5/24	10:30-11:15am	\$265/\$300 ●
<a href="#">127592</a>	Pre-Ballet/Tap	W	4-5	1/11-5/24	11:20am-12:05pm	\$265/\$300 ●
<a href="#">127589</a>	Creative Hip Hop	W	3-4	1/11-5/24	4:30-5:15pm	\$265/\$300 ●
<a href="#">127600</a>	Intro Ballet/Jazz	W	4-5	1/11-5/24	5:20-6:05pm	\$265/\$300 ●
<a href="#">127601</a>	Hip Hop 1	W	6-8	1/11-5/24	6:10-6:55pm	\$265/\$300 ●
<a href="#">127602</a>	Ballet 1	W	5-6	1/11-5/24	7-7:45pm	\$265/\$300 ●
<a href="#">127588</a>	Contemporary	Th	10-17	1/12-5/25	4:30-5:15pm	\$265/\$300 ●



# Instructional Programs

Instructional dance classes are offered on a seasonal basis. These participants do not participate in the annual spring dance recital. Download the Dance Academy Guide, which includes dance class dress codes, at [gepark.org/dance](http://gepark.org/dance).

Location: Spring Avenue Recreation Center. (ks)

## SESSION 1

#/Link	Class	Day	Age	Date	Time	Min/Max	R/NR
<a href="#">127519</a>	Hip Hop 1	M	6-8	1/9-2/6	5:20-6:05pm	5/12	\$55/\$70 ●
<a href="#">127516</a>	Creative Hip Hop	M	3-4	1/9-2/6	6:10-6:55pm	5/12	\$55/\$70 ●
<a href="#">127511</a>	Adult/Tot	Tu	18-36 mo.	1/10-2/7	4:10-4:40pm	5/12	\$35/\$50 ●
<a href="#">127524</a>	Tiny Tot	Tu	2.5-3	1/10-2/7	4:45-5:15pm	5/8	\$35/\$50 ●
<a href="#">127512</a>	Adult/Tot	W	18-36 mo.	1/11-2/8	9:15-9:45am	5/12	\$35/\$50 ●
<a href="#">127525</a>	Tiny Tot	W	2.5-3	1/11-2/8	9:55-10:25am	5/8	\$35/\$50 ●
<a href="#">127523</a>	Tap 1	W	6-11	1/11-2/8	4:30-5:15pm	5/12	\$55/\$70 ●
<a href="#">127528</a>	Tap 1	W	12-17	1/11-2/8	6:10-6:55pm	5/12	\$55/\$70 ●
<a href="#">127520</a>	Pre-Ballet/Tap	Th	4-5	1/12-2/9	9:30-10:15am	5/12	\$55/\$70 ●
<a href="#">127517</a>	Creative Movement	Th	3-4	1/12-2/9	10:20-11:05am	5/12	\$55/\$70 ●
<a href="#">127526</a>	Tiny Tot	Th	2.5-3	1/12-2/9	11:15-11:45am	5/8	\$35/\$50 ●
<a href="#">127521</a>	Pre-Ballet/Tap	Th	4-5	1/12-2/9	5:20-6:05pm	5/12	\$55/\$70 ●
<a href="#">127513</a>	Ballet 1	Th	5-6	1/12-2/9	6:10-6:55pm	5/12	\$55/\$70 ●
<a href="#">127515</a>	Ballet 2	Th	7-8	1/12-2/9	7-8pm	5/12	\$65/\$80 ●
<a href="#">127522</a>	Pre-Ballet/Tap	Sa	4-5	1/14-2/11	9-9:45am	5/12	\$55/\$70 ●
<a href="#">127514</a>	Ballet 1	Sa	5-6	1/14-2/11	9:50-10:35am	5/12	\$55/\$70 ●
<a href="#">127518</a>	Creative Movement	Sa	3-4	1/14-2/11	10:40-11:25am	5/12	\$55/\$70 ●
<a href="#">127527</a>	Tiny Tot	Sa	2.5-3	1/14-2/11	11:30am-12pm	5/8	\$35/\$50 ●

## SESSION 2

#/Link	Class	Day	Age	Date	Time	Min/Max	R/NR
<a href="#">127537</a>	Hip Hop 1	M	6-8	2/13-3/13	5:20-6:05pm	5/12	\$55/\$70 ●
<a href="#">127534</a>	Creative Hip Hop	M	3-4	2/13-3/13	6:10-6:55pm	5/12	\$55/\$70 ●
<a href="#">127259</a>	Adult/Tot	Tu	18-36 mo.	2/14-3/14	4:10-4:40pm	5/12	\$35/\$50 ●
<a href="#">127542</a>	Tiny Tot	Tu	2.5-3	2/14-3/14	4:45-5:15pm	5/8	\$35/\$50 ●
<a href="#">127530</a>	Adult/Tot	W	18-36 mo.	2/15-3/15	9:15-9:45am	5/12	\$35/\$50 ●
<a href="#">127543</a>	Tiny Tot	W	2.5-3	2/15-3/15	9:55-10:25am	5/8	\$35/\$50 ●
<a href="#">127541</a>	Tap 1	W	6-11	2/15-3/15	4:30-5:15pm	5/12	\$55/\$70 ●
<a href="#">127546</a>	Tap 1	W	12-17	2/15-3/15	6:10-6:55pm	5/12	\$55/\$70 ●
<a href="#">127538</a>	Pre-Ballet/Tap	Th	4-5	2/16-3/16	9:30-10:15am	5/12	\$55/\$70 ●

WINTER 2023 • 64

● Registration open now ● Registration opens at 9am on December 3, 2022



## SESSION 2 CONTINUED

#/Link	Class	Day	Age	Date	Time	Min/Max	R/NR
<a href="#">127535</a>	Creative Movement	Th	3-4	2/16-3/16	10:20-11:05am	5/12	\$55/\$70 ●
<a href="#">127544</a>	Tiny Tot	Th	2.5-3	2/16-3/16	11:15-11:45am	5/8	\$35/\$50 ●
<a href="#">127539</a>	Pre-Ballet/Tap	Th	4-5	2/16-3/16	5:20-6:05pm	5/12	\$55/\$70 ●
<a href="#">127531</a>	Ballet 1	Th	5-6	2/16-3/16	6:10-6:55pm	5/12	\$55/\$70 ●
<a href="#">127533</a>	Ballet 2	Th	7-8	2/16-3/16	7-8pm	5/12	\$65/\$80 ●
<a href="#">127540</a>	Pre-Ballet/Tap	Sa	4-5	2/18-3/18	9-9:45am	5/12	\$55/\$70 ●
<a href="#">127532</a>	Ballet 1	Sa	5-6	2/18-3/18	9:50-10:35am	5/12	\$55/\$70 ●
<a href="#">127536</a>	Creative Movement	Sa	3-4	2/18-3/18	10:40-11:25am	5/12	\$55/\$70 ●
<a href="#">127545</a>	Tiny Tot	Sa	2.5-3	2/18-3/18	11:30am-12pm	5/8	\$35/\$50 ●

## Dance Camps

### Spring Break Dance Academy Mini Camp

Ages 5-8

Experience four days of dance activities, including arts and crafts, group games, story time, and basic dance technique. No dance experience is necessary to join this camp. Dancers should wear comfortable clothing with dance or gym shoes and bring a snack with a water bottle. The last day of camp, our dancers will show off their new moves for friends and family. Location: Spring Avenue Recreation Center. Min/Max: 6/20. (ks)

#/Link	Day	Date	Time	R/NR
<a href="#">127547</a>	M-Th	3/27-3/30	9:30-11:30am	\$80/\$120 ●

### Day Off School Dance Camp

Ages 5-8

Fill the school day off with dance activities including arts and crafts, group games, story time, and basic dance technique. No dance experience is necessary to join this camp. Location: Spring Avenue Recreation Center. Min/Max: 6/20. (ks)

#/Link	Day	Date	Time	R/NR
<a href="#">127548</a>	M	1/16	9:30-11:30am	\$20/\$35 ●
<a href="#">127549</a>	M	2/20	9:30-11:30am	\$20/\$35 ●



WINTER 2023 \$65

● Registration open now ● Registration opens 9am on December 8, 2022

# gymnastics



Proper attire is mandatory for gymnastics participants. Girls should wear a gymnastics leotard or shorts and t-shirt (no tights or jewelry). Boys should wear shorts or sweatpants and t-shirt. Bare feet are required for all participants. Instructors reserve the right to move participants to a different class if they are not developmentally ready. No new registration will be taken after the second week of class. Please contact Clint Babicz at [cbabicz@gepark.org](mailto:cbabicz@gepark.org) with questions.

## Adult/Tot Gymnastics

Ages 18-36 months

This fun-filled adult/tot play time program introduces your child to the exciting world of tumbling and gymnastics.

Adult/Tot features tumbling and gymnastics equipment, balls, hoops, circles, and parachute play. Adult involvement is the key. Please no siblings. Location: Spring Avenue Recreation Center. Min/Max: 5/12. No class 3/27-4/1. (cb)

#/Link	Day	Date	Time	R/NR
<a href="#">127665</a>	M	1/9-2/13	9-9:30am	\$66/\$99 ●
<a href="#">127666</a>	W	1/11-2/15	9:15-9:45am	\$66/\$99 ●
<a href="#">127667</a>	Th	1/12-2/16	9:15-9:45am	\$66/\$99 ●
<a href="#">127668</a>	Sa	1/14-2/18	9-9:30am	\$66/\$99 ●
<a href="#">127669</a>	M	2/27-4/10	9-9:30am	\$66/\$99 ●
<a href="#">127670</a>	W	3/1-4/12	9:15-9:45am	\$66/\$99 ●
<a href="#">127671</a>	Th	3/2-4/13	9:15-9:45am	\$66/\$99 ●
<a href="#">127672</a>	Sa	3/4-4/15	9-9:30am	\$66/\$99 ●

## Tiny Tumblers Gymnastics

Age 3

This introductory gymnastic class helps develop gross motor skills and body awareness and teaches self-confidence while having fun. A variety of gymnastics and tumbling stations will be set up each week to introduce your gymnasts to the basic skills used in this sport. Children must be able to attend without a caregiver present. Location: Spring Avenue Recreation Center. Min/Max: 5/10. No class 3/27-4/1. (cb)

#/Link	Day	Date	Time	R/NR
<a href="#">127674</a>	M	1/9-2/13	9:45-10:15am	\$66/\$99 ●
<a href="#">127675</a>	W	1/11-2/15	10-10:30am	\$66/\$99 ●
<a href="#">127676</a>	Th	1/12-2/16	11-11:30am	\$66/\$99 ●
<a href="#">127677</a>	Sa	1/14-2/18	9:45-10:15am	\$66/\$99 ●
<a href="#">127678</a>	M	2/27-4/10	9:45-10:15am	\$66/\$99 ●
<a href="#">127679</a>	W	3/1-4/12	10-10:30am	\$66/\$99 ●
<a href="#">127680</a>	Th	3/2-4/13	11-11:30am	\$66/\$99 ●
<a href="#">127681</a>	Sa	3/4-4/15	9:45-10:15am	\$66/\$99 ●



## Preschool Gymnastics

Ages 4-5

A variety of gymnastics and tumbling stations will be set up each week to introduce your gymnast to the basic skills used in this sport. Children must be able to attend class without a caregiver present. Location: Spring Avenue Recreation Center. Min/Max: 5/12. No class 3/27-4/1. (cb)

## Kindergarten Gymnastics

Ages 5-6

This class was designed to help refine and develop the gross motor skills taught in previous classes. A higher skill level of gymnastics stations will be set up each week to increase strength, flexibility, and coordination. Location: Spring Avenue Recreation Center. Min/Max: 5/12. No class 3/27-4/1. (cb)

#/Link	Day	Date	Time	R/NR
<b>Preschool</b>				
<a href="#">127682</a>	W	1/11-2/15	5-5:45pm	\$78/\$117 ●
<a href="#">127683</a>	Th	1/12-2/16	10-10:45am	\$78/\$117 ●
<a href="#">127684</a>	Sa	1/14-2/18	10:30-11:15am	\$78/\$117 ●
<a href="#">127685</a>	W	3/1-4/12	5-5:45pm	\$78/\$117 ●
<a href="#">127686</a>	Th	3/2-4/13	10-10:45am	\$78/\$117 ●
<a href="#">127687</a>	Sa	3/4-4/15	10:30-11:15am	\$78/\$117 ●
<b>Kindergarten</b>				
<a href="#">127688</a>	W	1/11-2/15	6-6:45pm	\$78/\$117 ●
<a href="#">127689</a>	Sa	1/14-2/18	11:30am-12:15pm	\$78/\$117 ●
<a href="#">127690</a>	W	3/1-4/12	6-6:45pm	\$78/\$117 ●
<a href="#">127691</a>	Sa	3/4-4/15	11:30am-12:15pm	\$78/\$117 ●
<b>Preschool/Kindergarten (Combined Class)</b>				
<a href="#">127692</a>	M	1/9-2/13	10:30-11:15am	\$78/\$117 ●
<a href="#">127693</a>	M	1/9-2/13	1:30-2:15pm	\$78/\$117 ●
<a href="#">127694</a>	Tu	1/10-2/14	2:30-3:15pm	\$78/\$117 ●
<a href="#">127695</a>	W	1/11-2/15	10:45-11:30am	\$78/\$117 ●
<a href="#">127696</a>	W	1/11-2/15	4-4:45pm	\$78/\$117 ●
<a href="#">127697</a>	M	2/27-4/10	10:30-11:15am	\$78/\$117 ●
<a href="#">127698</a>	M	2/27-4/10	1:30-2:15pm	\$78/\$117 ●
<a href="#">127699</a>	Tu	2/28-4/11	2:30-3:15pm	\$78/\$117 ●
<a href="#">127700</a>	W	3/1-4/12	10:45-11:30am	\$78/\$117 ●
<a href="#">127701</a>	W	3/1-4/12	4-4:45pm	\$78/\$117 ●

## Stay & Play Open Gym

Children (4 years of age or younger) can stay active and play in the Spring Avenue Gymnastics Center. This safe and fun environment is the perfect spot for your child to interact with you and other peers. Pre-registration is not required but come early as space is limited to the first 30 participants. Children must be accompanied and supervised by an adult.

Please pay inside the Gymnastics Center. (cb)

**Dates:** Now to Dec. 13

**Day:** Tuesdays & Fridays

**Time:** 9am-11am

**Dates:** Jan. 10-Apr. 4

**Day:** Tuesdays & Fridays

**Time:** 9am-11am

**Drop-in R/NR Fee:** \$5/\$8

**10-Visit Punch Card**

**R/NR Fee:** \$40/\$70





### Pre-Developmental Gymnastics

1st grade to age 12

The focus of this beginner program will be on floor exercise, springboard skills, bars, and beam. Stretching and conditioning for muscle tone will be included. Location: Spring Avenue Recreation Center. Min/Max: See online. No class 3/27-4/1. (cb)

#/Link	Day	Date	Time	R/NR
<a href="#">127702</a>	Tu	1/10-2/14	4:30-5:30pm	\$105/\$157 ●
<a href="#">127703</a>	Th	1/12-2/16	4-5pm	\$105/\$157 ●
<a href="#">127704</a>	Sa	1/14-2/18	12:30-1:30pm	\$105/\$157 ●
<a href="#">127705</a>	Tu	2/28-4/11	4:30-5:30pm	\$105/\$157 ●
<a href="#">127706</a>	Th	3/2-4/13	4-5pm	\$105/\$157 ●
<a href="#">127707</a>	Sa	3/4-4/15	12:30-1:30pm	\$105/\$157 ●

### Developmental Gymnastics

Ages 8-12

This program is a continuation of Pre-Developmental Gymnastics. Participants must be able to perform round offs, cartwheels, forward/backward rolls, handstand, and a bridge in order to register. Location: Spring Avenue Recreation Center. Min/Max: See online. No class 3/27-4/1. (cb)

#/Link	Day	Date	Time	R/NR
<a href="#">127708</a>	Tu	1/10-2/14	5:45-6:45pm	\$105/\$157 ●
<a href="#">127709</a>	Th	1/12-2/16	5:15-6:15pm	\$105/\$157 ●
<a href="#">127711</a>	Tu	2/28-4/11	5:45-6:45pm	\$105/\$157 ●
<a href="#">127712</a>	Th	3/2-4/13	5:15-6:15pm	\$105/\$157 ●

### Tumbling 1

Ages 7-14

No skills required. Start out learning the proper way to perform handstands, cartwheels, and more. Participants will build on their skills each session. Location: Spring Avenue Recreation Center. Min/Max: See online. No class 3/27-4/1. (cb)

#/Link	Day	Date	Time	R/NR
<a href="#">127714</a>	Th	1/12-2/16	6:30-7:15pm	\$78/\$117 ●
<a href="#">127715</a>	Th	3/2-4/13	6:30-7:15pm	\$78/\$117 ●

### Tumbling 2

Ages 7-14

Participants must possess basic skills such as cartwheel, round-off, forward/backward rolls, handstand, and bridge. Location: Spring Avenue Recreation Center. Min/Max: See online. No class 3/27-4/1. (cb)

#/Link	Day	Date	Time	R/NR
<a href="#">127716</a>	Th	1/12-2/16	6:30-7:30pm	\$90/\$135 ●
<a href="#">127717</a>	Th	3/2-4/13	6:30-7:30pm	\$90/\$135 ●

# ackerman sfc

800 ST. CHARLES ROAD, GLEN ELLYN • [ACKERMANSFC.COM](http://ACKERMANSFC.COM)



*Free Week*

**January 2 to 8**

Jumpstart your new year during Free Week at Ackerman SFC from January 2-8. We're waiving the drop-in fee for the fitness center and group fitness classes to help you achieve your wellness goals. Simply stop by the Ackerman SFC front desk during Free Week to take advantage of this special opportunity. For ages 14 and up. (bt)

## ackerman SFC facility hours

### Fitness Center/Walking Track

Monday-Thursday ..... 4:30am-10pm  
 Friday..... 4:30am-9pm  
 Saturday ..... 6am-7pm  
 Sunday..... 7am-7pm

### Front Desk

Monday-Friday..... 5am-9pm  
 Saturday ..... 6am-5pm  
 Sunday ..... 7am-5pm

### Holidays

November 24..... 7am-1pm  
 December 24..... 7am-1pm  
 December 25..... Closed  
 December 31..... 7am-1pm  
 January 1..... 7am-3pm

## what's in the gym

- PRECOR Adaptive Motion Trainers
- PRECOR EFX Ellipticals with Crossramp
- Matrix and Life Fitness Treadmills
- NuStep Recumbent Steppers
- Matrix, Octane, & Life Fitness Ellipticals
- Matrix ARC Trainers
- Matrix Bikes (Recumbent/Upright/Hybrid)
- Matrix Single Station Strength Machines
- Gauntlet Stairmasters
- Scift Pro2 Trainers
- Concept 2 Rowing Machines
- Xerball & Medicine Ball
- Free Weights & Core Conditioning
- Stretching & CrossFit Area w/TRX Straps
- Cable Cross Weight Machines

## amenities

7,000+ square foot fitness center, 3 court gymnasium, 45-yard by 60-yard indoor turf field, 2 lane indoor track (10.3 laps = 1 mile), group fitness studio, Ackerman Training Room with batting cages, locker rooms and shower facility, and free Wi-Fi.

**See the Group Fitness Schedule »**

**View Personal Training Options »**

# membership rates and benefits

## \$0 ENROLLMENT FEE

- Fitness center and indoor track access
- Free weekly group fitness classes
- Open court/turf time
- Orientation with a personal trainer
- Bring a guest on the first Wednesday of the month
- Use of the Spring Avenue Fitness Center

We will automatically charge your membership fees to the credit/debit card you place on file each month.

Membership Type*	Resident	Nonresident
Teen (14-17)	\$21	\$23
Senior (60+)	\$21	\$23
Active Military	\$21	\$23
Individual (18-59)	\$30	\$35
Couple	\$50	\$55
Family	\$60	\$65

## work in glen ellyn?

Ackerman SFC offers special membership rates to Glen Ellyn employees and teachers with proof of employment. Call or visit the Ackerman SFC front desk for details.



## Home for break?

### Student & Teacher Specials

#### 30 Days for \$30

Keep up with your workouts over the break. Sign up for an Ackerman SFC membership good for 30 days for only \$30 any time between November 15, 2022, to January 15, 2023.

#### \$15 Spring Break Passes

Don't go on break from your workout. Teachers and students (ages 14+) can purchase a 1-week membership for just \$15 at Ackerman SFC. Sign up for an Ackerman SFC membership good for 7 days for only \$15 any time between March 1, 2023, to April 20, 2023.

*A valid school ID or proof of employment is required at time of purchase. Must be 14 years of age or older. 30-day and 1-week memberships do not renew automatically.*

\*Residents are defined as those living within Glen Ellyn Park District boundaries. Must provide proof of age if requested. A teen is defined as a person age 14-17 (age 11-13, if certified). Waiver must be signed by a legal guardian. An individual is defined as a person age 18 and up. A senior is defined as a person age 60 and up. A family is defined as up to six immediate family members residing in the same household and children 26 years and younger living at home. Other relatives and individuals in the same household are not included in the family pass. Children 10 years and under have access to open court and turf. Children 8 to 13 can access the track with an adult. Fitness center is available for children 14 years and older (age 11-13 after orientation; see front desk to set up an appointment). A couple is defined as two people living at the same address.





## group fitness classes

Group fitness classes are included as part of the Ackerman SFC member fee. With more than 50 options to choose from each week, you're sure to find a class to fall in love with. Classes do not require registration, and may take place on the court, turf, or in the 2nd floor fitness studio.

[VIEW THE CLASS SCHEDULE »](#)

## walking track

The track is free for Ackerman members. Ages 8-13 must be accompanied by a member age 18 years or older to use the walking track.

### DAILY DROP-IN

Ackerman SFC member ..... Free  
 R/NR Daily Drop-in..... \$5/\$7

### ANNUAL PASSES

Resident (Ages 8-59)..... \$35  
 Nonresident (Ages 8-59) ..... \$50  
 Senior (Ages 60 & Up)..... \$25

## MEMBERSHIP ADD-ON

### college of dupage lap swimming

Active Ackerman SFC fitness members (ages 16+) may purchase a lap swimming monthly membership to swim at College of DuPage's indoor pool for just \$20 per member per month. Members that are ages 16-17 must have an adult/guardian sign the College's waiver of liability. Walking track only members are not eligible for this offer. To sign up, visit the College's Member Service Office where they will setup your membership. C.O.D. indoor pool hours are available at: [www.gepark.org/COD](http://www.gepark.org/COD)

## open pickleball

Using a paddle, low net and a plastic ball with holes, this unique sport is enjoyed by people of all ages and athletic abilities thanks to its ease of play and straightforward rules.

### SCHEDULE

To view the schedule, visit: [ackermansfc.com/pickleball](http://ackermansfc.com/pickleball)

### FEES

Ackerman SFC member ..... Free  
 R/NR Daily Drop-in..... \$5/\$7  
 R/NR 5-Visit Punch Card ..... \$20/\$30

## open court & turf

No reservations required. Please call the Ackerman SFC front desk for daily available open gym times. Open to both members and non-members.

### DAILY DROP-IN FEES

Ackerman SFC member ..... Free  
 Youth R/NR Daily Drop-in..... \$4/\$5  
 Adult R/NR Daily Drop-in ..... \$5/\$6

## ackerman kids zone

Get your workout in as your little ones take part in fun activities like Tot Tumbling, Arts and Crafts, Story Pajama Time, and other formats with the new Ackerman Kids Zone, available 8:30 to 10:30am Monday, Wednesday, and Friday. Sign your child up for monthly unlimited classes (\$20/month for the 1st child and \$12/month for each additional child), or drop-in for \$7 per child.

Kids Zone is currently available to Ackerman SFC members only. Spots are limited to 15 kids per class. Visit [ackermansfc.com/kids-zone](http://ackermansfc.com/kids-zone) to learn more.



## personal training

Our certified personal trainers will design a program that meets your specific fitness needs. They can help you reach and/or maintain your goal by guiding you through safe, productive, supervised workouts.

# of Sessions	Length	Member	Non-Member
One	30 minutes	\$29	\$49
Three	30 minutes	\$84	\$126
Six	30 minutes	\$150	\$225
Twelve	30 minutes	\$282	\$423
One	1 hour	\$45	\$60
Three	1 hour	\$130	\$175
Six	1 hour	\$255	\$340
Twelve	1 hour	\$500	\$638

## sports training

Visit the Ackerman SFC front desk for more information or to setup your sessions.

### SPORTS PERFORMANCE TRAINING

Strength and Conditioning Coach Mike Nishimura can help players in all sports programs increase their athleticism. Sessions focus on the three major goals of improving athletic performance, reducing athletic injuries, and teaching lifelong fitness and movement skills. You'll receive a customized workout plan to target different areas of the body and learn how to properly use workout equipment. Sessions start at \$29.

### VOLLEYBALL TRAINING

All-State Coach Christine Giunta-Mayer offers private lessons for student athletes in 5th grade through college. Private lessons are perfect for players that want to focus on specifics of their game. Sessions start at \$70.

### BASKETBALL TRAINING

Sign up for private lessons from Skill Development Coach Brett Love. Brett has high school and collegiate level playing experience with the credentials to train players to take their skills to the next level. Sessions start at \$45.

# ackermanevents

NOV

24

## Turkey Burn

[Click here to learn more »](#)

JAN

1

## New Year's Burn

[Click here to learn more »](#)

DEC

4

## Toys for Tots Toy Drive with Characters

[Click here to learn more »](#)

FEB

17

## Bags & Brews Tournament

[Click here to learn more »](#)

DEC

16

## Family Bingo Night

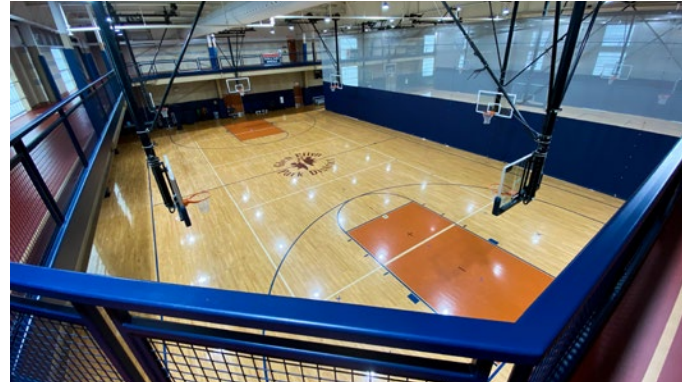
[Click here to learn more »](#)

APR

22

## 2K Glow Run/Walk

[Click here to learn more »](#)



## batting cage rentals

Four batting cage tunnels are available to rent at Ackerman SFC. Rental includes use of a batting cage tunnel and one L screen. This facility requires visitors to bring their own sport-specific ball. Guests of high school age and older may use the batting cages independently. Guests in 8th grade and below must be accompanied by an adult at all times. Please note, the use of batting cages is not included with memberships, punch cards, or daily drop ins. Batting cages can be reserved in advance by calling (630) 317-0134 or emailing [bthomas@gepark.org](mailto:bthomas@gepark.org).

## facility rentals

Three full-size basketball courts and an indoor artificial turf field are available to rent for practices, games, and more. The facility also features an outdoor volleyball court, training room, fitness/dance studio, and a party room. (630) 317-0134 or emailing [bthomas@gepark.org](mailto:bthomas@gepark.org).

## birthday parties

Our birthday party packages are bursting with activities for kids in an environment that is fun, safe, and truly unique. Choose from a wide variety of age-appropriate themes for kids ages 3 and up. View package options at [AckermanSFC.com/birthday-parties](http://AckermanSFC.com/birthday-parties).

Ackerman SFC members use Spring Avenue Fitness Center for free as part of their membership!

# spring avenue fitness

185 SPRING AVENUE, GLEN ELLYN • (630) 858-2462

## membership fees

Annual memberships are valid for one year from the date of purchase.

Ackerman SFC fitness members have full access to Spring Avenue Fitness Center and group fitness classes.

### INDIVIDUAL FEES (AGES 14-59)

Annual Pass..... \$245R/\$365NR  
 3-Month Pass..... \$135R/\$195NR  
 1-Day Pass..... \$7R/\$8NR

### SENIOR FEES (AGES 60 & UP)

Annual Pass..... \$120R/\$180NR  
 1-Day Pass..... \$4R/\$6NR

## center hours

Monday-Thursday ..... 9am-8pm  
 Friday..... 9am-5pm  
 Saturday..... 9am-12pm  
 Sunday..... Closed

### HOLIDAY HOURS

Spring Avenue members can utilize Ackerman SFC on holidays when the fitness center is closed.

November 24-25..... Closed  
 December 19-22 ..... 9am-5pm  
 December 23-26 ..... Closed  
 December 27-29 ..... 9am-5pm  
 December 30-31..... Closed  
 January 1-2..... Closed

## what you'll find

- Treadmills, Ellipticals, Rowing Machine
- Recumbent Bikes
- Free Weights
- Dual-Station Strength Machines
- Lockers and Showers
- Equipment Orientation

## SilverSneakers

If your Medicare health plan, Medicare supplement carrier, or group retiree plan includes SilverSneakers as part of your benefit package, you can work out at no extra cost. Visit the Spring Avenue front desk to learn more.



# platform tennis center

845 PERSHING AVENUE, GLEN ELLYN (WITHIN MARYKNOLL PARK)



Open year-round, the Glen Ellyn Platform Tennis Center features six courts and modern Paddle Hut. A membership is required to use the facility, but non-members are welcome to sign up for private lessons and classes (when available). Platform tennis is the only racquet sport that players can enjoy outdoors in any climate. You don't need to have prior knowledge of the game as it's easy to learn.

## Membership Rates & Benefits

- No additional court fees to play year-round.
- Unlimited access to court time when not programmed with leagues, lessons or events.
- Access to the Paddle Hut between 7am and 11pm.
- Privilege of making court reservations 7 days in advance. Note: four courts are reserved for the Glen Ellyn Platform Travel Club on Tuesday, Wednesday, and Thursday evenings from October-March.
- Discount on lessons.

## Partial Year Membership

Valid January 1 to August 31, 2023

Type	Resident	Nonresident	Add'l Child
<b>Adult (18 and up)</b>	\$200	\$260	-
<b>Junior (6-17)</b>	\$50	\$75	-
<b>Family</b>	\$450	\$540	\$15/child

*Family includes 2 adults (same household) or 2 adults and 2 children (age 17 and under) per household. Youth members must be accompanied by an adult and do not receive a key to the Paddle Hut.*

## Private Lessons

Our Director of Racquet Sports, Mark Cunnington, can tailor lessons to your specific needs. Mark comes to the Park District highly skilled in the sport of platform tennis as well as tennis. USPTA and PPTA certified, Mark has over 10 years' experience in coaching platform tennis. To get started, email [gepaddlepro@gmail.com](mailto:gepaddlepro@gmail.com). Pricing below is listed per person; semi-private lessons are for two players.

Type	M/NM
<b>Private 30-Minute</b>	\$35/\$40
<b>Private 60-Minute</b>	\$70/\$80
<b>Semi-Private 30-Minute</b>	\$18/\$22
<b>Semi-Private 60-Minute</b>	\$35/\$40
<b>3 &amp; A Pro 30-Minute</b>	\$15/\$20
<b>3 &amp; A Pro 60-Minute</b>	\$25/\$30
<b>5 Private 60-Minute</b>	\$300/\$360

[Purchase memberships online »](#)

## Paddles and Pours

Ages 21 and up

Try out platform tennis while enjoying local brews from Two Hound Red. New players and veterans of the game will get a chance to learn about platform tennis from our Director of Racquet Sports, Coach Cunningham, before relaxing in our modern paddle hut with a craft beer. One beer is included in the registration fee, additional beers are available for purchase. Dress for the weather – platform tennis is an outdoor sport. Location: Platform Tennis Center. Min/Max: 10/50. (1s)

#/Link	Day	Date	Time	R/NR
<a href="#">127733</a>	F	2/10	7-8:30pm	\$20/\$25 ●

## Quick Start Paddle

Ages 21 and up

This is a fun and dynamic crash course covering all the basics of Platform Tennis, including court positioning, stroke technique, screen play, communication, scoring, and rules of the game. Best for beginners and advanced beginners. Location: Platform Tennis Center. Min/Max 4/12. (bt)

#/Link	Section	Day	Date	Time	R/NR
<a href="#">127609</a>	Women	M	1/9-2/6	5-6pm	\$125/\$150 ●
<a href="#">127610</a>	Women	Tu	1/10-2/7	9:30-10:30am	\$125/\$150 ●
<a href="#">127608</a>	Men	Tu	1/10-2/7	6-7pm	\$125/\$150 ●

## Youth Paddle

Ages 6-14

Kids will learn skills and drills and play games in this instructional class with Coach Cunningham, our Director of Racquet Sports. They'll be having such a great time, they might not even realize they're in an instructional class designed to develop their racquet skills and learn the sport. Location: Platform Tennis Center. Min/Max 8/16. (bt)

#/Link	Day	Date	Time	R/NR
<a href="#">127612</a>	M	1/9-2/6	4-5pm	\$150 ●
<a href="#">127611</a>	Tu	1/10-2/7	5-6pm	\$150 ●

## Monday Winter Co-Rec In-House League

Ages 21 and up

This popular league is open to Glen Ellyn Platform Tennis Center members only and is designed to help introduce new players to the game and enhance the experience for advanced beginners. Sign up is first come, first served. Players will be ranked by the Director of Racquet Sports and placed on teams. All games are played on platform tennis courts at Maryknoll Park. Saturday leagues are geared towards beginner level players. Email [gepaddlepro@gmail.com](mailto:gepaddlepro@gmail.com) for more information. Location: Platform Tennis Center. Min/Max: 16/84. (bt)

### Register by 1/2

#/Link	Day	Date	Time	R/NR
<a href="#">127615</a>	M	1/9-3/13	7-10pm	\$90/\$115 ●
<a href="#">127806</a>	Sa	1/14-3/18	8-10am	\$90/\$115 ●

## Wednesday Winter In-House Women's League

Ages 21 and up

This league is geared towards female players. Members will be evaluated by our Platform Pro and placed on teams. Teams will play a weekly match on our courts with other Glen Ellyn Park District Paddle Members. Must hold a Glen Ellyn Platform Tennis Membership to play in this league. Contact Director of Racquet Sports Mark Cunningham at [gepaddlepro@gmail.com](mailto:gepaddlepro@gmail.com) for more information. Location: Platform Tennis Center. Min/Max: 16/40. (bt)

### Register by 1/2

#/Link	Day	Date	Time	R/NR
<a href="#">127616</a>	W	1/11-3/15	5-6:30pm	\$90/\$115 ●

## Men's and Women's Travel League

The Glen Ellyn Park District works in conjunction with the Glen Ellyn Platform Tennis Club (GEPTC) to provide travel leagues. The GEPTC Men's Travel program has many teams playing in various levels (series) of play. These teams participate in the Chicago Platform Tennis Charities and Southwest leagues. Teams travel to other communities, as well as hosting home matches in the evenings. The Women's Travel league participates in the North Shore and Southwest leagues and travels during the day. Please contact Mark Cunningham at [gepaddlepro@gmail.com](mailto:gepaddlepro@gmail.com) for more information. All travel members must also hold a Glen Ellyn Park District Platform Membership.

A photograph of two children walking away from the camera in a snowy field. The child on the left is wearing a blue hat with large ears, a colorful patterned jacket, and a dark backpack. The child on the right is wearing an orange hat with large ears, a blue jacket, and a yellow backpack. They are holding hands. The background is a soft-focus snowy landscape with falling snow.

# Healthier Makes Happier.

Caring for your family is an adventure – one filled with extraordinary joys and unexpected challenges. At Duly, our providers aren't satisfied simply treating symptoms – we believe you deserve a life-long partner in health, equipped with the tools, expertise and support you need to help your family flourish.

[Learn More](#)



**duly**  
HEALTH AND CARE

Begin your journey to a healthier, happier future at [dulyhealthandcare.com/community](https://dulyhealthandcare.com/community)



# rentals

Planning your next big event? We offer a wide variety of affordable indoor and outdoor venues. Deposits may be required with some rentals. Space is available on a first come, first served basis.



## Ackerman SFC

800 St. Charles Road, Glen Ellyn

Ackerman SFC has three full-size basketball courts, an indoor artificial turf field, and four batting cages available to rent for practices, games, parties and more. The facility also features an outdoor sand volleyball court and outdoor turf field.

**Contact:** Brad Thomas at (630) 317-0134



## Athletic Fields

The Glen Ellyn Park District has fields available for soccer, baseball or softball: Ackerman Park, 800 St. Charles Road; Village Green, 130 S. Lambert Road; or Newton Park, 707 Fairview Avenue.

### Village Green & Newton Parks:

(630) 942-7290

### Ackerman Park:

Grass Fields: (630) 317-0134

Synthetic Turf Field: (630) 317-0134



## Spring Avenue Recreation Center

185 Spring Avenue, Glen Ellyn

Spring Avenue Recreation Center can accommodate a variety of events. A single classroom (up to 25 people) or the craft lab (up to 40 people) are available to rent. **Contact:** Katy Speck at (630) 942-7268



## Main Street Recreation Center

501 Hill Avenue, Glen Ellyn

Conveniently located near downtown Glen Ellyn. Rent a single classroom (up to 30 people), double classroom (up to 50 people), or elementary-sized gymnasium. **Contact:** David MacDonald at (630) 942-7266



## Sunset Pool

483 Fairview Avenue, Glen Ellyn

Private pool rentals are perfect for picnics, neighborhood parties, birthdays, group outings, and more. The pool is available to rent on Friday and Saturday evenings from early June through late August. **Contact:** Lisa Semetko at (630) 942-7264



## Maryknoll Clubhouse Party Room

845 Pershing Avenue, Glen Ellyn

Enjoy a gathering with friends, family and co-workers. Room rental includes tables and chairs. Renter may bring in own food, and alcohol is permitted with a liability contract. Maximum number of guests is 50. Room size is 25' x 40'.

## Maryknoll Park Pavilion & Shelter

845 Pershing Avenue, Glen Ellyn

Two covered outdoor venues are available to rent. Each can accommodate up to 50 guests. Renters receive special discounts on splash park entry and/or rounds of mini golf.

## Maryknoll Splash Park

845 Pershing Avenue, Glen Ellyn

Rental includes private use of the splash park outside of normal business hours.

**Contact:** Lisa Semetko at (630) 942-7264 for Maryknoll Park rentals.



# Lake Ellyn Boathouse

645 Lenox Road, Glen Ellyn

Located just 25 miles from downtown Chicago, this unique landmark house was built in 1937 as a community facility and was fully restored to its historic beauty in 2016. Beautifully placed along Lake Ellyn, the Boathouse has been home to numerous wedding ceremonies, receptions, anniversary parties, birthdays, and more.

**NOW BOOKING**

Call Jeannie Robinson at (630) 942-7267 for more details.





## Glen Ellyn Park District

# scholarship program

PARKS &  
ACTIVITIES  
FOR  
EVERYONE

The scholarship program is available to all Glen Ellyn Park District residents that qualify. Scholarship funds can be used for non-contractual camps and classes, pool passes, trips, preschool, fitness, athletics, etc., where fees are required. Funds are not eligible for equipment purchases or rental fees. Residents who qualify are eligible to receive up to \$400 maximum per person per calendar year (January 1-December 31) based on need and availability of funds.

Applicants must be able to provide proof of residency and income as defined on the application. Copies of the application are available at [gepark.org/financial-aid](http://gepark.org/financial-aid) or by visiting the Spring Avenue (185 Spring Avenue) or Main Street (501 Hill Avenue) Recreation Centers.

A completed application form along with copies of supporting documents must be returned in person or mailed to: Scholarship Program, Glen Ellyn Park District, 185 Spring Avenue, Glen Ellyn, IL 60137. Please allow up to 3 weeks for the application process. Applicants will be notified by letter or phone of the decision made concerning the scholarship. If you have questions, email [scholarships@gepark.org](mailto:scholarships@gepark.org).



# explore *Your* parks

## parks ●

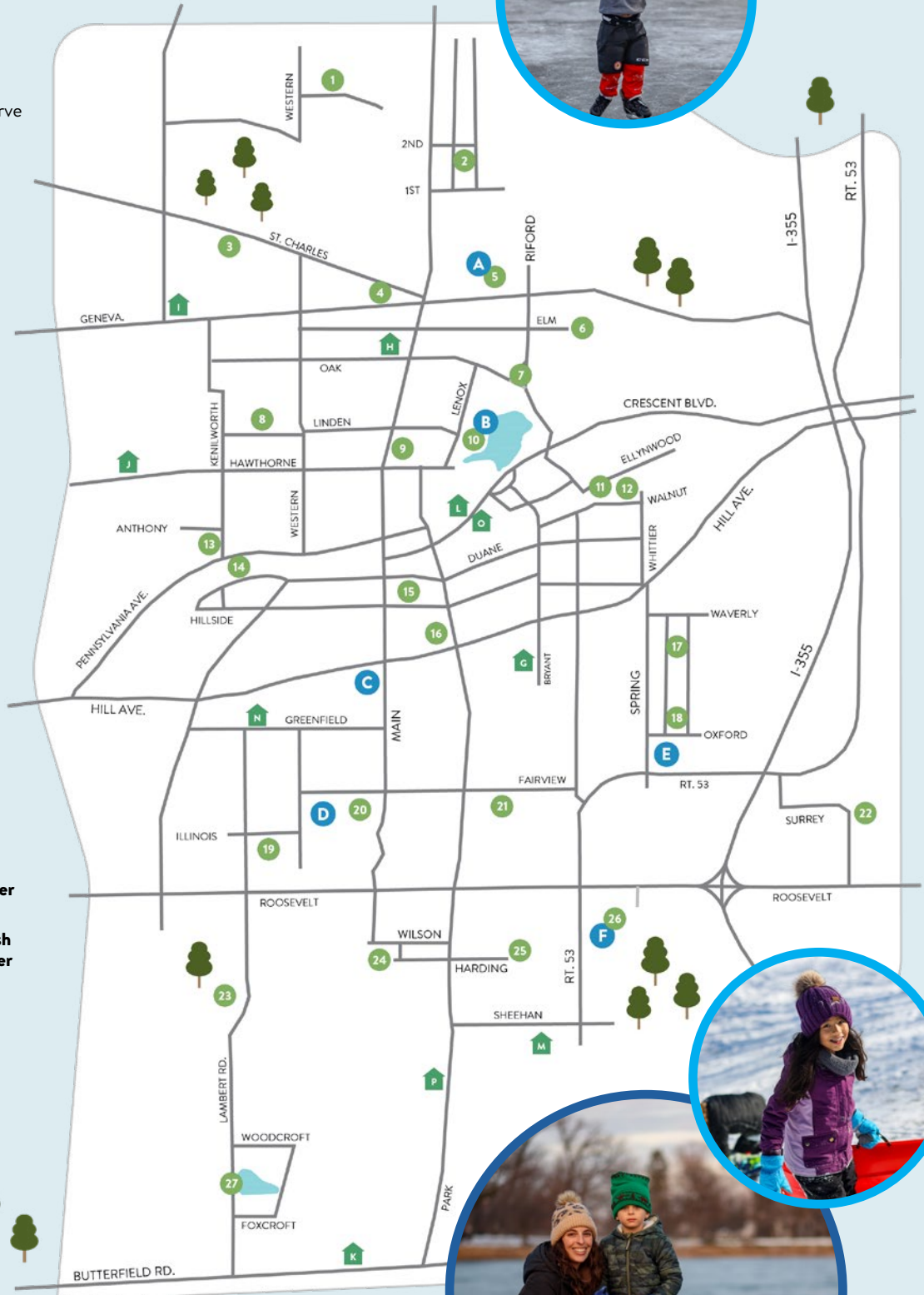
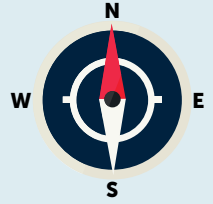
- 1 Greenbriar Park
- 2 Spalding Park
- 3 Churchill Park
- 4 Stacy Park
- 5 Ackerman Park
- 6 George Ball Park
- 7 Joseph Sam Perry Nature Preserve
- 8 Babcock Grove Park
- 9 Benjamin Gault Bird Sanctuary
- 10 Lake Ellyn Park
- 11 Ellynwood Nature Preserve
- 12 Walnut Glen Park
- 13 Frank Johnson Center
- 14 Danby Park
- 15 Prairie Path Park
- 16 Pfuetze Park
- 17 Glen Oak Park
- 18 Marie Ulhorn/President's Park
- 19 Glen Ellyn Manor Park
- 20 Sunset Park
- 21 Newton Park
- 22 Surrey Park
- 23 Village Green Park
- 24 Co-Op Park
- 25 Panfish Playground
- 26 Maryknoll Park
- 27 Lake Foxcroft Park

## facilities ●

- A Ackerman SFC**  
800 St. Charles Road
- B Lake Ellyn Boathouse**  
645 Lenox Road
- C Main Street Recreation Center**  
501 Hill Avenue
- D Sunset Pool**  
483 Fairview Avenue
- E Spring Avenue Recreation Center**  
185 Spring Avenue
- F Holes & Knolls, Maryknoll Splash Park, and Platform Tennis Center**  
845 Pershing Road

## schools 🏠

- G** Ben Franklin School
- H** Forest Glen School
- I** Churchill School
- J** Hadley Junior High
- K** Glenbard South
- L** Glenbard West
- M** Glen Crest
- N** Lincoln School
- O** Memorial Field
- P** Park View School





# park features

• Denotes also lined for Pickleball

		Walking Paths/Trail	Playground	Baseball/Softball Field	Basketball Court	Tennis Court (Hard Court)	Pickleball Court	Platform Tennis	Sand Volleyball Court	Synthetic Turf Athletic Field	Open Play Area/Grass Fields	Outdoor Fitness Equipment	Picnic Shelter	Outdoor Pool	Fishing Pier	Splash Park	Mini Golf	Disc Golf	Skate Park	Ice Skating	Sled Hill
<b>Ackerman Park</b>	800 St. Charles Rd.	•	•	•					•	•	•	•									
<b>Babcock Grove Park</b>	324 Linden St.		•								•										
<b>Churchill Park</b>	271 St. Charles Rd.	•											•								
<b>Co-Op Park</b>	515 Wilson Ave.		•								•										
<b>Danby Park</b>	280 Duane St.	•	•								•										
<b>Ellynwood Preserve</b>	801 Ellynwood Dr.																				
<b>Benjamin Gault</b>	625 N. Main St.	•																			
<b>George Ball Park</b>	801 Elm St.					•					•	•									
<b>Glen Ellyn Manor Park</b>	375 Illinois St.	•	•								•										
<b>Glen Oak Park</b>	350 Woodstock Ave.		•								•										
<b>Greenbriar Park</b>	430 Second Place Glendale Heights	•	•								•	•									
<b>Frank Johnson Center</b>	490 Kenilworth Ave.		•								•										
<b>Lake Ellyn Park</b>	645 Lenox Rd.	•	•								•				•					•	
<b>Lake Foxcroft Park</b>	2S540 Lambert Rd.	•	•								•	•		•						•	
<b>Main Street Rec. Ctr.</b>	501 Hill Ave.		•		•						•										
<b>Maryknoll Park</b>	845 Pershing Ave.	•	•					•			•	•				•	•	•			
<b>Newton Park</b>	707 Fairview Ave.		•	•	•	•				•	•	•							•	•	•
<b>Panfish Playground</b>	Maintained by GEPD		•								•										
<b>Joseph Sam Perry Preserve</b>	735 Grand Ave.																				
<b>Pfuetze Park</b>	400 N. Park Blvd.										•										
<b>Prairie Path Park</b>	565 Steward Ave.																				
<b>President's Park</b>	265 Cumnor		•								•										
<b>Spalding Park</b>	22W325 2nd St.		•								•	•									
<b>Spring Avenue Rec. Ctr.</b>	185 Spring Ave.										•										
<b>Stacy Park</b>	50 Geneva Rd.		•		•						•	•								•	
<b>Sunset Park</b>	483 Fairview Ave.		•			•					•			•							
<b>Surrey Park</b>	95 Surrey Dr.		•		•						•										
<b>Village Green Park</b>	130 S. Lambert Rd.		•	•	•	•	•				•	•				•					
<b>Walnut Glen Park</b>	860 Walnut St.		•																		

# The Fun Starts Here



## Community-Based Recreational Programs and Inclusion Services For Park District Programs

### WDSRA RECREATIONAL & SOCIAL PROGRAMS: IN-PERSON & VIRTUAL

WDSRA provides fun, engaging recreational and social programs, trips, and special events for children, teens, and adults with special needs. Programs are structured to allow everyone to participate at their own ability level. Through WDSRA each individual has the opportunity to grow personally, connect with their community and discover their potential.

- Sports
- Special Olympics
- Music and Dance
- Art and Drama
- Bowling
- Social Clubs
- Special Events
- Adaptive Sports
- Overnight Outings
- Weeklong Trips
- And much more!

### INCLUSION SERVICES

Inclusion Services are designed to provide the least restrictive environment while providing the maximum opportunity to participate in regular park programs. There is no charge for WDSRA support. To register for services, simply indicate that special accommodations are needed on the park district registration form. Two-week advance notice is requested for inclusion support.



### BE A PART OF THE FUN!

We are looking for people who are optimistic and enthusiastic.

Flexibility. Training. Choice.



For details visit [www.wdsra.com](http://www.wdsra.com) - Join Our Team.



# district policies

## DEFINITION OF RESIDENCY

Not all Glen Ellyn residents are in the Park District. Anyone living within the geographic boundaries of the Glen Ellyn Park District is considered a resident. Glen Ellyn Park District residents, via property taxes, make financial contributions to the operation of the park system. Non-residents are charged higher fees for programs than residents to compensate for property tax disparity.

Residents of Glen Ellyn who are not residents of the Glen Ellyn Park District or any other park district may receive all the privileges of belonging to the Glen Ellyn Park District by paying the equivalent of Park District taxes annually. This membership allows for priority registration, pool passes, and any other services provided to our residents at the resident rate.

## WAIVERS OF LIABILITY

To participate in any Glen Ellyn Park District program, you must sign a waiver releasing the Park District of any liability.

## REFUNDS, CANCELLATIONS

The Glen Ellyn Park District reserves the right to cancel, postpone or combine classes, or change instructors. If insufficient enrollment causes a class to be canceled, notification will be given 7 days in advance, and full tuition refunded. Withdrawals prior to the start of a class will be assessed at minimum a \$5.00 service charge. Refunds for moving, injury/illness, or schedule changes will be pro-rated according to the date the request for a refund is made.

## COMMITMENT TO QUALITY

To encourage first time participation as well as repeat participation, the Park District has a refund policy highlighted by a satisfaction guarantee. This special refund policy provides us with timely feedback about dissatisfaction regarding our services. We can then take prompt action to improve services. If you are not completely satisfied, tell us and we will either: invite you to repeat the class at no charge; allow you a credit that can be applied to another program; issue you a full refund.

Our guarantee is based on fulfilling our promise to deliver the published expectations describing the service you have used. A refund will be granted if you were dissatisfied with the experience due to circumstances under the Park District's control.

Requests for the above-mentioned options must be made before the midpoint of the program or within two weeks of a single meeting activity. All refund requests must be submitted in writing and returned to the Spring Avenue Recreation Center or the Main Street Recreation Center. Satisfaction Guarantee does not apply to trips, special events with prepaid admissions and tickets, and athletic programs where equipment has already been ordered.

## FINANCIAL ASSISTANCE

The Glen Ellyn Park District recognizes there are community residents who may suffer economic setbacks that might preclude their participation in Glen Ellyn Park District programs. Financial assistance forms are available at the Spring Avenue and Main Street Recreation Center. All requests remain confidential. If you have questions, please call (630) 858-2462 or email [scholarships@gepark.org](mailto:scholarships@gepark.org).

A referral for additional scholarship assistance is also available to qualified resident children under the age of 18 through the Milton Township Youth Committee's Family Youth Scholarship Fund.

## INSURANCE

The Glen Ellyn Park District does not provide medical insurance coverage for individuals who participate in our programs or use our facilities. To do so would make programs and user fees cost prohibitive.

## AMERICANS WITH DISABILITIES ACT

The Americans with Disabilities Act (ADA) prohibits discrimination on the basis of a disability. The Glen Ellyn Park District will make reasonable accommodations in recreation programs to enable participation by an individual with a disability that meets essential eligibility requirements for that leisure program and facility.

If you have questions or believe you have been unfairly discriminated against by the Park District, please contact Nick Cinquegrani at (630) 942-7257. Those who use the Telecommunications Device for the deaf may reach the Park District by calling the Illinois Relay Line at (800) 526-0844.

## NON-DISCRIMINATION STATEMENT

The Glen Ellyn Park District prohibits discrimination in all its programs and activities on the basis of race, color, national origin, gender, religion, age, disability, political beliefs, sexual orientation, marital or family status.

## BEHAVIOR POLICY

Participants are always expected to exhibit appropriate behavior. The following guidelines have been developed to help make Park District programs safe and enjoyable for all participants. Additional rules may be developed for specific programs and athletic leagues as deemed necessary by staff. Participants shall:

1. Show respect to all participants and staff, take direction from staff.
2. Refrain from using abusive or foul language.
3. Refrain from causing bodily harm to self, other participants or staff.
4. Show respect for equipment, supplies and facilities.

A positive approach will be used regarding discipline. Staff will periodically review rules with participants during the program session. If inappropriate behavior occurs, prompt resolution will be sought specific to each individual situation. The Park District reserves the right to dismiss a participant whose behavior endangers the safety of themselves or others.

## ADULT'S CODE OF ETHICS

- I will encourage good sportsmanship by demonstrating positive support for players, coaches, and officials at every game and practice.
- I will place the emotional and physical well-being of my child ahead of my personal desire to win.
- I will insist that my child play in a safe and healthy environment.
- I will require that my child's coach be trained in the responsibilities of being a youth sports coach.
- I will remember that the game is for youth – not adults.
- I will do my very best to make youth sports fun for my child.
- I will ask my child to treat other players, coaches, and officials with respect regardless of race, gender, creed, or ability.
- I agree with these rules and understand that the Glen Ellyn Park District Associations have adopted a Zero-Tolerance Policy and that not abiding by these rules may restrict me from attending future games and practices.

## PETS AT EVENTS

The Glen Ellyn Park District asks that everyone please exercise good judgment and leave pets at home when attending events that draw large crowds. Please show respect for other people, yourself and your pet by helping the Park District maintain a safe and healthy environment where all people have the opportunity to participate and enjoy themselves.

## NOTICE OF POSSIBLE CHANGES IN PLAYBOOK LISTINGS

The policies, procedures, requirements, programs, fees and facility availability contained in this Playbook represent Park District program and policies at the time of publication. Sometimes changes in the programs (including fees, locations, times, etc.) and policies are necessary after Playbook publication but prior to program commencement or facility operation.

To provide the best services, programs and facilities to the public, the Park District reserves the right to add, to change, modify or delete any program or policies after they have been published. The Park District will attempt to make a reasonable effort to give prompt public notice of any material changes in the programs and policies, but notice cannot be assured. We apologize for any inconvenience this may cause and appreciate your understanding and cooperation.

## PHOTO/VIDEO POLICY

The Glen Ellyn Park District uses pictures or videos of participants to publicize recreation opportunities in our social media, print, and online marketing. If you do not want a picture taken, please tell our photographer. If the picture has already been taken, please contact the Park District at (630) 942-7260.