

GLEN ELLYN PARK DISTRICT

summer camp guide

2024



GLEN ELLYN
PARK DISTRICT

Registration
begins Saturday,
February 3 *at* 9 am

   [gepark.org](https://www.gepark.org)

we're here to help!

Staff initials follow the program description for which they are responsible.

- (bt) Brad Thomas bthomas@gepark.org
 - (cg) Chris Gutmann cgutmann@gepark.org
 - (cb) Clint Babicz cbabicz@gepark.org
 - (dt) Dan Tripp dtripp@gepark.org
 - (da) Darshan Addanki daddanki@gepark.org
 - (dm) David MacDonald dmacdonald@gepark.org
 - (ks) Katy Speck kspeck@gepark.org
 - (lb) Laurie Bellmar lbellmar@gepark.org
 - (ls) Lisa Semetko lsemetko@gepark.org
 - (lw) Lynn Wiltfong lwiltfong@gepark.org
 - (rb) Rebecca Brush rbrush@gepark.org
 - (ss) Susan Smentek ssmentek@gepark.org
- Website gepark.org
 Closure/Cancellation Hotline..... gepark.org/hotline



Summer Camp Registration Begins

Residents: February 3, 2024, at 9am
Nonresidents: February 10, 2024, at 9am

how to register

For registration assistance, call our registration offices at (630) 942-7280 or email registration@gepark.org.

Online:

Click the code number in the digital guide or visit gepark.org/register. New users must create an account prior to registering online by clicking "Create an Account."

Drop Off Form or Register in Person:

Visit our website to check for any special hours.

- **Spring Avenue Recreation Center, 185 Spring Ave.**
 Monday, Tuesday, and Friday: 8:30am-5pm
 Wednesday and Thursday: 8:30am-7pm
 Saturday: 9am-12pm
 Sunday: Closed
- **Main Street Recreation Center, 501 Hill Ave.**
 Monday-Thursday: 8:30am-8pm
 Friday: 8:30am-5pm
 Saturday: 9am-12pm
 Sunday: Closed
- **Ackerman SFC, 800 St. Charles Rd.**
 Monday-Thursday: 8:30am-9pm
 Friday: 8:30am-8pm
 Saturday: 7am-7pm
 Sunday: 7am-6pm

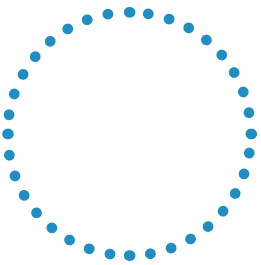
Mail/Fax:

Mail: Glen Ellyn Park District, Registration, 185 Spring Avenue, Glen Ellyn, 60137
Fax: (630) 389-8527



glenellynparks

subscribe!



GLEN ELLYN PARK DISTRICT • 2

Registration begins at 9 am on Saturday, February 3, 2024

Positively Play - 2.5 Years

Age 2.5

The summer months provide a lot of time for play. Have your child gear up for preschool while enjoying a fun-filled summer camp experience. Children will explore crafts, songs and stories in a fun social environment that fosters creativity. The activities will vary from session-to-session. Emergency forms must be completed online through ePACT. Location: Spring Avenue Recreation Center. Min/Max: 7/12. No camp from 7/1-7/4. (dm)

#/Link	Day	Date	Time	R/NR
131845	M & W	6/3-6/12	9-11am	\$84/\$126
131846	Tu & Th	6/4-6/13	9-11am	\$84/\$126
131847	M & W	6/17-6/26	9-11am	\$84/\$126
131848	Tu & Th	6/18-6/27	9-11am	\$84/\$126
131849	M & W	7/8-7/17	9-11am	\$84/\$126
131850	Tu & Th	7/9-7/18	9-11am	\$84/\$126
131851	M & W	7/22-7/31	9-11am	\$84/\$126
131852	Tu & Th	7/23-8/1	9-11am	\$84/\$126

Positively Play - 3 Years

Age 3

The summer months provide a lot of time to play and explore. Preschool summer camp provides an opportunity to participate in a fun-filled camp while experiencing a little bit of Preschool. Children will explore art, crafts, songs, stories and more in a fun social environment that fosters creativity. The activities will vary from session-to-session, so your child will not repeat a theme. Please register your children for the age they will be by the start of camp. Emergency forms must be completed online through ePACT. Location: Main Street Recreation Center. Min/Max: 7/12. No camp from 7/1-7/4. (dm)

#/Link	Day	Date	Time	R/NR
131853	M & W	6/3-6/12	9-11:30am	\$105/\$158
131854	Tu & Th	6/4-6/13	9-11:30am	\$105/\$158
131855	M & W	6/17-6/26	9-11:30am	\$105/\$158
131856	Tu & Th	6/18-6/27	9-11:30am	\$105/\$158
131857	M & W	7/8-7/17	9-11:30am	\$105/\$158
131858	Tu & Th	7/9-7/18	9-11:30am	\$105/\$158
131859	M & W	7/22-7/31	9-11:30am	\$105/\$158
131860	Tu & Th	7/23-8/1	9-11:30am	\$105/\$158

Positively Play - 4 Years

Age 4

The summer months provide a lot of time for play. Have your child gear up for preschool while enjoying a fun-filled summer camp experience. Children will explore science, art, crafts, songs, and stories in a fun social environment that fosters creativity. The activities will vary from session-to-session, so your child will never repeat a theme. Please register your children for the age they will be by the start of camp. Emergency forms must be completed online through ePACT. Location: Main Street Recreation Center. Min/Max: 7/12. No camp from 7/1-7/4. (dm)

#/Link	Day	Date	Time	R/NR
131861	M-Th	6/3-6/13	9-11:30am	\$210/\$315
131865	M-Th	6/3-6/13	12:15-2:45pm	\$210/\$315
131862	M-Th	6/17-6/27	9-11:30am	\$210/\$315
131866	M-Th	6/17-6/27	12:15-2:45pm	\$210/\$315
131863	M-Th	7/8-7/18	9-11:30am	\$210/\$315
131867	M-Th	7/8-7/18	12:15-2:45pm	\$210/\$315
131864	M-Th	7/22-8/1	9-11:30am	\$210/\$315
131868	M-Th	7/22-8/1	12:15-2:45pm	\$210/\$315

Kindergarten Camp

Ages 5-6

Keep your child's academic skills sharp over the summer while having fun. Campers will practice upper and lower-case letters, spelling, sight words, addition skills, and more. Children will do crafts, have free time, and play outside. Designed for children entering kindergarten in the fall. Location: Main Street Recreation Center. Min/Max: 6/16. No camp from 7/1-7/4. (dm)

#/Link	Day	Date	Time	R/NR
131869	M-Th	6/3-6/13	9-11:30am	\$210/\$315
131873	M-Th	6/3-6/13	12:15-2:45pm	\$210/\$315
131870	M-Th	6/17-6/27	9-11:30am	\$210/\$315
131874	M-Th	6/17-6/27	12:15-2:45pm	\$210/\$315
131871	M-Th	7/8-7/18	9-11:30am	\$210/\$315
131875	M-Th	7/8-7/18	12:15-2:45pm	\$210/\$315
131872	M-Th	7/22-8/1	9-11:30am	\$210/\$315
131876	M-Th	7/22-8/1	12:15-2:45pm	\$210/\$315



Imagination Station

Ages 4-7

Campers will enjoy games, arts and crafts, and make new friends while exploring Newton Park. A great introduction to camp before moving on to full day camp, Imagination Station has exciting daily activities with a different theme each week. Drop-off and pick-up will take place at the picnic tables near the west parking lot. Emergency forms must be completed online through ePACT. In case of inclement weather, camp will be canceled; families will be notified as soon as possible by phone or email. Location: Newton Park. Min/Max: 7/30. (ks)

#/Link	Day	Date	Time	R/NR
131721	M-F	6/3-6/7	9-11:30am	\$140/\$210
131731	M-F	6/3-6/7	12:30-3pm	\$140/\$210
131722	M-F	6/10-6/14	9-11:30am	\$140/\$210
131732	M-F	6/10-6/14	12:30-3pm	\$140/\$210
131723	M-F	6/17-6/21	9-11:30am	\$140/\$210
131733	M-F	6/17-6/21	12:30-3pm	\$140/\$210
131724	M-F	6/24-6/28	9-11:30am	\$140/\$210
131734	M-F	6/24-6/28	12:30-3pm	\$140/\$210
131725	M-W	7/1-7/3	9-11:30am	\$84/\$126
131735	M-W	7/1-7/3	12:30-3pm	\$84/\$126
131726	M-F	7/8-7/12	9-11:30am	\$140/\$210
131736	M-F	7/8-7/12	12:30-3pm	\$140/\$210
131727	M-F	7/15-7/19	9-11:30am	\$140/\$210
131737	M-F	7/15-7/19	12:30-3pm	\$140/\$210
131728	M-F	7/22-7/26	9-11:30am	\$140/\$210
131738	M-F	7/22-7/26	12:30-3pm	\$140/\$210
131729	M-F	7/29-8/2	9-11:30am	\$140/\$210
131739	M-F	7/29-8/2	12:30-3pm	\$140/\$210
131730	M-F	8/5-8/9	9-11:30am	\$140/\$210
131740	M-F	8/5-8/9	12:30-3pm	\$140/\$210

Safety Village

Ages 4-7

The Safety Village program is designed to build a foundation of safety knowledge in young children, including personal, pedestrian, home and play safety, in a fun environment. We will help develop confidence and sound decision-making abilities regarding safe practices. Children learn how to handle specific safety situations such as being approached by a stranger and how community workers help people. This program is based on play philosophy. Classroom visitors, games, crafts, music, stories, films, and role playing are a part of the Safety Village curriculum. Children will practice safe riding and street safety in our outdoor learning area. Please bring a water bottle and bike helmet to class each day. Location: Spring Avenue Recreation Center. Min/Max: 8/16. (ks)

#/Link	Day	Date	Time	R/NR
131741	M-Th	6/3-6/13	9:30-11:30am	\$170/\$255
131745	M-Th	6/3-6/13	12:30-2:30pm	\$170/\$255
131742	M-Th	6/17-6/27	9:30-11:30am	\$170/\$255
131746	M-Th	6/17-6/27	12:30-2:30pm	\$170/\$255
131743	M-Th	7/8-7/18	9:30-11:30am	\$170/\$255
131747	M-Th	7/8-7/18	12:30-2:30pm	\$170/\$255
131744	M-Th	7/22-8/1	9:30-11:30am	\$170/\$255
131748	M-Th	7/22-8/1	12:30-2:30pm	\$170/\$255

Camp Caravan

Ages 6-12

Campers will enjoy a summer packed full of exciting activities that will include games, crafts, outdoor activities, and so much more! Campers will swim over at Sunset Pool Monday through Wednesday and off-site field trips are taken every Friday. Every Thursday Camp Caravan will host weekly on-site entertainment such as magicians, bubble shows, and more. Parents who need to get to work early or stay late can take advantage of our pre-camp and/or post-camp hours. Camp Caravan drop-off and pick-up will always be from the Main Street Recreation Center. Late drop-off and early pick-up is not allowed unless given approval. (dm)

Camp Registration

Choose between the 3-day or 5-day full week options. Registration will close each Friday at 12pm for the following week of camp. Fees will not be prorated for any missed days or vacations. Camper forms must be completed, via ePACT, prior to your child attending camp. Instructions will be sent to your email. Location: Main Street Recreation Center. No camp from 7/4-7/5.

#/Link	Day	Date	Time	R/NR
131877	M-F	6/3-6/7	8:30am-3:30pm	\$245/\$350
131886	Tu/W/Th	6/4-6/6	8:30am-3:30pm	\$178/\$252
131878	M-F	6/10-6/14	8:30am-3:30pm	\$245/\$350
131887	Tu/W/Th	6/11-6/13	8:30am-3:30pm	\$178/\$252
131879	M-F	6/17-6/21	8:30am-3:30pm	\$245/\$350
131888	Tu/W/Th	6/18-6/20	8:30am-3:30pm	\$178/\$252
131880	M-F	6/24-6/28	8:30am-3:30pm	\$245/\$350
131889	Tu/W/Th	6/25-6/27	8:30am-3:30pm	\$178/\$252
131890	M/Tu/W	7/1-7/3	8:30am-3:30pm	\$178/\$252
131881	M-F	7/8-7/12	8:30am-3:30pm	\$245/\$350
131891	Tu/W/Th	7/9-7/11	8:30am-3:30pm	\$178/\$252
131882	M-F	7/15-7/19	8:30am-3:30pm	\$245/\$350
131892	Tu/W/Th	7/16-7/18	8:30am-3:30pm	\$178/\$252
131883	M-F	7/22-7/26	8:30am-3:30pm	\$245/\$350
131893	Tu/W/Th	7/23-7/25	8:30am-3:30pm	\$178/\$252
131884	M-F	7/29-8/2	8:30am-3:30pm	\$245/\$350
131894	Tu/W/Th	7/30-8/1	8:30am-3:30pm	\$178/\$252
131885	M-F	8/5-8/9	8:30am-3:30pm	\$245/\$350
131895	Tu/W/Th	8/6-8/8	8:30am-3:30pm	\$178/\$252

Pre & Post Camp Registration

Need to extend your campers day by a few hours? Enroll in our pre or post camp options. Your child must also be registered for a 3-day or week option of Camp Caravan to register for Pre/Post camp. Pre-camp drop-off and post-camp pick-up is at Main Street Recreation Center. No camp from 7/4-7/5.

#/Link	Day	Date	Time	R/NR
Pre-Camp				
131906	M-F	6/3-6/7	7-8:30am	\$60/\$85
131896	Tu/W/Th	6/4-6/6	7-8:30am	\$40/\$55
131907	M-F	6/10-6/14	7-8:30am	\$60/\$85
131897	Tu/W/Th	6/11-6/13	7-8:30am	\$40/\$55
131908	M-F	6/17-6/21	7-8:30am	\$60/\$85
131898	Tu/W/Th	6/18-6/20	7-8:30am	\$40/\$55
131909	M-F	6/24-6/28	7-8:30am	\$60/\$85
131899	Tu/W/Th	6/25-6/27	7-8:30am	\$40/\$55
131900	M/Tu/W	7/1-7/3	7-8:30am	\$40/\$55
131910	M-F	7/8-7/12	7-8:30am	\$60/\$85
131901	Tu/W/Th	7/9-7/11	7-8:30am	\$40/\$55
131911	M-F	7/15-7/19	7-8:30am	\$60/\$85
131902	Tu/W/Th	7/16-7/18	7-8:30am	\$40/\$55
131912	M-F	7/22-7/26	7-8:30am	\$60/\$85
131903	Tu/W/Th	7/23-7/25	7-8:30am	\$40/\$55
131913	M-F	7/29-8/2	7-8:30am	\$60/\$85
131904	Tu/W/Th	7/30-8/1	7-8:30am	\$40/\$55
131914	M-F	8/5-8/9	7-8:30am	\$60/\$85
131905	Tu/W/Th	8/6-8/8	7-8:30am	\$40/\$55
Post-Camp				
131925	M-F	6/3-6/7	3:30-6pm	\$70/\$95
131915	Tu/W/Th	6/4-6/6	3:30-6pm	\$50/\$65
131926	M-F	6/10-6/14	3:30-6pm	\$70/\$95
131916	Tu/W/Th	6/11-6/13	3:30-6pm	\$50/\$65
131927	M-F	6/17-6/21	3:30-6pm	\$70/\$95
131917	Tu/W/Th	6/18-6/20	3:30-6pm	\$50/\$65
131928	M-F	6/24-6/28	3:30-6pm	\$70/\$95
131918	Tu/W/Th	6/25-6/27	3:30-6pm	\$50/\$65
131919	M/Tu/W	7/1-7/3	3:30-6pm	\$50/\$65
131929	M-F	7/8-7/12	3:30-6pm	\$70/\$95
131920	Tu/W/Th	7/9-7/11	3:30-6pm	\$50/\$65
131930	M-F	7/15-7/19	3:30-6pm	\$70/\$95
131921	Tu/W/Th	7/16-7/18	3:30-6pm	\$50/\$65
131931	M-F	7/22-7/26	3:30-6pm	\$70/\$95
131922	Tu/W/Th	7/23-7/25	3:30-6pm	\$50/\$65
131932	M-F	7/29-8/2	3:30-6pm	\$70/\$95
131923	Tu/W/Th	7/30-8/1	3:30-6pm	\$50/\$65
131933	M-F	8/5-8/9	3:30-6pm	\$70/\$95
131924	Tu/W/Th	8/6-8/8	3:30-6pm	\$50/\$65

Intro to Turf & Surf Camp

Ages 9-11

Campers will enjoy the freedom of jumping on their bikes and heading out to local destinations, three to five miles in distance one way. Mondays through Fridays, campers will also swim at Sunset Pool. This program combines education and hands-on experiences to prepare you for the future weeks in Turf & Surf Camp. All campers are required to have a bike, bike lock, helmet, water bottle, backpack, sack lunch, and snacks every day. Camper forms must be completed, via ePACT, prior to your child attending camp. Instructions will be sent to your email. Registration will close each Friday at 12pm for the following week of camp. Location: Main Street Recreation Center. Min/Max: 6/20. No camp from 7/3-7/4. (dm)

#/Link	Day	Date	Time	R/NR
Ages 9-10				
131934	M-F	6/3-6/7	8:45am-2:45pm	\$195/\$255
131935	M-F	6/10-6/14	8:45am-2:45pm	\$195/\$255
131936	M-F	6/17-6/21	8:45am-2:45pm	\$195/\$255
131937	M-F	6/24-6/28	8:45am-2:45pm	\$195/\$255
131938	M-W	7/1-7/3	8:45am-2:45pm	\$126/\$144
131939	M-F	7/8-7/12	8:45am-2:45pm	\$195/\$255
131940	M-F	7/15-7/19	8:45am-2:45pm	\$195/\$255
131941	M-F	7/22-7/26	8:45am-2:45pm	\$195/\$255
131942	M-F	7/29-8/2	8:45am-2:45pm	\$195/\$255
131943	M-F	8/5-8/9	8:45am-2:45pm	\$195/\$255
Ages 10-11				
131944	M-F	6/3-6/7	8:45am-2:45pm	\$195/\$255
131945	M-F	6/10-6/14	8:45am-2:45pm	\$195/\$255
131946	M-F	6/17-6/21	8:45am-2:45pm	\$195/\$255
131947	M-F	6/24-6/28	8:45am-2:45pm	\$195/\$255
131948	M-W	7/1-7/3	8:45am-2:45pm	\$126/\$144
131949	M-F	7/8-7/12	8:45am-2:45pm	\$195/\$255
131950	M-F	7/15-7/19	8:45am-2:45pm	\$195/\$255
131951	M-F	7/22-7/26	8:45am-2:45pm	\$195/\$255
131952	M-F	7/29-8/2	8:45am-2:45pm	\$195/\$255
131953	M-F	8/5-8/9	8:45am-2:45pm	\$195/\$255

Turf & Surf Camp

Ages 11-13

This camp is recommended for campers who have completed Introduction to Turf & Surf Camp or previous summers of Turf & Surf Camp. This on-the-road experience combines morning activities and field trips. Mondays through Thursdays, campers will also swim at Sunset Pool. Campers should have a basic understanding of bike safety and rules of the road. Riders will be expected to travel up to six miles one way to reach their daily destination. All campers are required to have a bike, bike lock, helmet, water bottle, backpack, sack lunch, and snacks every day. Camper forms must be completed, via ePACT, prior to your child attending camp. Instructions will be sent to your email. Registration will close each Friday at 12pm for the following week of camp. Location: Main Street Recreation Center. Min/Max: 6/20. No camp from 7/3-7/4. (dm)

#/Link	Day	Date	Time	R/NR
Ages 11-12				
131954	M-F	6/3-6/7	8:45am-2:45pm	\$195/\$255
131955	M-F	6/10-6/14	8:45am-2:45pm	\$195/\$255
131956	M-F	6/17-6/21	8:45am-2:45pm	\$195/\$255
131957	M-F	6/24-6/28	8:45am-2:45pm	\$195/\$255
131958	M-W	7/1-7/3	8:45am-2:45pm	\$126/\$144
131959	M-F	7/8-7/12	8:45am-2:45pm	\$195/\$255
131960	M-F	7/15-7/19	8:45am-2:45pm	\$195/\$255
131961	M-F	7/22-7/26	8:45am-2:45pm	\$195/\$255
131962	M-F	7/29-8/2	8:45am-2:45pm	\$195/\$255
131963	M-F	8/5-8/9	8:45am-2:45pm	\$195/\$255
Ages 12-13				
131964	M-F	6/3-6/7	8:45am-2:45pm	\$195/\$255
131965	M-F	6/10-6/14	8:45am-2:45pm	\$195/\$255
131966	M-F	6/17-6/21	8:45am-2:45pm	\$195/\$255
131967	M-F	6/24-6/28	8:45am-2:45pm	\$195/\$255
131968	M-W	7/1-7/3	8:45am-2:45pm	\$126/\$144
131969	M-F	7/8-7/12	8:45am-2:45pm	\$195/\$255
131970	M-F	7/15-7/19	8:45am-2:45pm	\$195/\$255
131971	M-F	7/22-7/26	8:45am-2:45pm	\$195/\$255
131972	M-F	7/29-8/2	8:45am-2:45pm	\$195/\$255
131973	M-F	8/5-8/9	8:45am-2:45pm	\$195/\$255



Bricks 4 Kidz LEGO® STEM - JEDI Engineering: Mission to Space Camp

Ages 6-9

Join us on an adventurous journey through space. Build a world where rebels and the dark side start epic battles. Using our proprietary LEGO® project kits and model plans, the students will use their engineering skills to build different moving models each day. We'll build motorized models that represent spacecraft from Star Wars and models related to the NASA space program. Our one-of-a-kind models incorporate beams, gears, axles, motors & battery packs. Are you a budding astronaut? An adventurer who loves space exploration. Then you'll love our space theme projects. We'll provide the bricks; all you need to bring for this adventure is your imagination. Our creative camps feature LEGO® mosaics, 3D LEGO® color kit Builds, motorized technic LEGO® projects, daily take home arts & crafts, creative free play and more. Location: Main Street Recreation Center. Min/Max: 10/18. (dm)

#/Link	Day	Date	Time	R/NR
131985	M-F	6/10-6/14	9am-12pm	\$250/\$350

Bricks 4 Kidz Extreme Ninjas - LEGO® Engineering Camp

Ages 6-9

Enter a world of ninjas, adventure, and LEGO® master-building. Campers will use LEGO® bricks in their adventure to master different building methods and techniques. Throughout the week we will build dojos, LEGO® ninja weapons, Ninjago spinjitzu spinning machines, vehicles and more. Campers will use our proprietary kits and model plans to build one-of-a-kind LEGO® creations. Our creative camps feature LEGO® mosaics, 3D LEGO® color kit Builds, motorized technic LEGO® machines, daily take home arts & crafts, creative free play and more. Location: Main Street Recreation Center. Min/Max: 10/18. (dm)

#/Link	Day	Date	Time	R/NR
131986	M-F	6/10-6/14	1-4pm	\$250/\$350

Bricks 4 Kidz LEGO® City Engineering and Architects Camp

Ages 6-9

Explore the structures and landscapes of a city: Campers will work in teams to design and build the city of their dreams, using LEGO® bricks. The architects may plan a road, propose a monument, design a park or school, or imagine a skyscraper. Using our proprietary kits and model plans, campers will construct one-of-a-kind LEGO® City models using LEGO® bricks. Builders will assemble motorized models of construction tools and equipment, vehicles, carnival & playground rides. Campers will also have a city museum & zoo day where they build animals & dinosaurs. Our specialized model plans incorporate beams, gears, axles, motors, battery packs and other technic LEGO® components. Learn what it takes to become a LEGO® City planner. Location: Main Street Recreation Center. Min/Max: 10/18. (dm)

#/Link	Day	Date	Time	R/NR
131987	M-F	6/24-6/28	9am-12	\$250/\$350
131988	M-F	7/29-82	1-4pm	\$250/\$350

Bricks 4 Kidz Game On Master Builders Engineering Camp

Ages 6-9

For kids today, it's all about the world of online video games and apps. In this interactive summer camp, campers will use LEGO® Bricks to create and build different characters from their favorite video games. Themes such as Super Mario Bros, Roblox, Beyblades, Fortnite & Pokémon come to life using robots, mosaics, and 3D art, all made out of LEGO® Bricks. Don't forget classic Nintendo and SEGA themes such as Zelda, Duck Hunt, Pacman, and Sonic the Hedgehog. Each day will be a new adventure as the virtual and LEGO® worlds combine. Our creative camps feature LEGO® mosaics, 3D LEGO® color kit Builds, motorized technic LEGO® projects, daily take home arts & crafts, creative free play and more. Location: Main Street Recreation Center. Min/Max: 10/18. (dm)

#/Link	Day	Date	Time	R/NR
131989	M-F	6/24-6/28	1-4pm	\$250/\$350



Bricks 4 Kidz LEGO® Minecraft Adventure Camp

Ages 6-9

Experience the exciting world of Minecraft® using LEGO® bricks this summer. This fun & exciting camp takes a whole lot of LEGO® Bricks, a background in STEM, children's natural creativity, and inspiration from the popular game to build on a week of learning fun – the Bricks 4 Kidz way. From Pigs, Mooshrooms and Chickens to Mine Carts, Zombies and Skeletons, we'll explore and build different stories each day in our LEGO® Mining and Crafting world. Kids will start by crafting their shelters, mob characters, critters and tools using LEGO® bricks. Students will face new challenges each day, building models and crafting key elements from the popular Minecraft® game. Using our proprietary kits and model plans, campers will construct one-of-a-kind Minecraft® models using LEGO® bricks. Our specialized model plans incorporate beams, gears, axles, motors, battery packs and other technic LEGO® components. Location: Main Street Recreation Center. Min/Max: 10/16. (dm)

#/Link	Day	Date	Time	R/NR
131990	M-F	7/15-7/19	9am-12pm	\$250/\$350
131991	M-F	7/29-8/2	9am-12pm	\$250/\$350

Bricks 4 Kidz LEGO® Superhero Science Camp

Ages 6-9

Can't fly? Don't have laser eyes? No problem – some of the coolest superheroes make amazing gadgets and use scientific principles to stop the bad guys and solve crimes. We'll be doing just that and more using LEGO® Bricks and some ingenuity. Campers will use our proprietary kits and model plans to build one-of-a-kind superhero creations, gadgets, vehicles & more. Whether you are a master crime-fighting builder (or even if you can fly!), you'll have a blast learning, building, and playing with other superheroes-in-the-making at Bricks 4 Kidz. At Bricks 4 Kidz camps, we use LEGO bricks to build amazing worlds of fun in a variety of exciting themes that engage children in STEM-enriched activities and making new LEGO®-loving friends. Our creative camps feature LEGO® mosaics, 3D LEGO® color kit Builds, motorized technic LEGO® projects, daily take home arts & crafts, creative free play and more. Location: Main Street Recreation Center. Min/Max: 10/18. (dm)

#/Link	Day	Date	Time	R/NR
131992	M-F	7/15-7/19	1-4pm	\$250/\$350

T-Rexplorers Adventures in Paleontology – Beginner Camp

Ages 5-7

This is the perfect camp for the younger dinosaur lovers of the world. Each day, kids will get to play games, make crafts, and examine different authentic prehistoric fossils and dinosaur bones from numerous species including Triceratops and T-Rex. Kids love this adventure and won't even realize they are learning, too. Bring a water bottle and a healthy snack. We will be outdoors so dress accordingly. Location: Lake Ellyn Park. Min/Max: 12/20. (dm)

#/Link	Day	Date	Time	R/NR
131993	W-F	7/10-7/12	9am-12pm	\$200/\$240

T-Rexplorers Adventures in Paleontology – Ultimate Camp

Ages 8-12

This is as close as you can get to a dinosaur dig without leaving the state. Kids will love this fun and adventurous “straight from the cretaceous period” camp because of its unique exploration of dinosaur science and paleontology. Prepare to get dirty as we use the tools and skills utilized at a dig site. Each day, we'll examine different types of authentic prehistoric fossils and dinosaur bones, including Triceratops and T-Rex. Come and see the discoveries T-Rexplorers made at our 2023 digs, and enjoy games, crafts, and activities. Bring a water bottle and a healthy snack. We will be outdoors so dress accordingly. Location: Lake Ellyn Park. Min/Max: 12/20. (dm)

#/Link	Day	Date	Time	R/NR
131994	W-F	7/10-7/12	1-4pm	\$200/\$240



Little Doctor School Camp

Ages 4-10

Camp participants will role-play the key responsibilities of a doctor and learn about vital organs in the human body. These future doctors will learn how to use a stethoscope, blood pressure cuff, and reflex hammer. They will practice administering first aid, learn how pharmacists play a role in administering medications, and more. Location: Main Street Recreation Center. Min/Max: 8/16. (dm)

#/Link	Day	Date	Time	R/NR
Ages 4-6				
132011	M-F	6/24-6/28	9am-12pm	\$315/\$375
Ages 6-10				
132012	M-F	7/29-8/2	1-4pm	\$315/\$375

Little Veterinarian School Horse Camp

Ages 6-10

This equine camp is for you! Become a vet for a week and learn all about the care and maintenance of a horse. Take an oath and use real medical tools to keep your newly adopted plush horse happy and healthy. After learning about horse anatomy, riding styles, and nutrition you can ride into the sunset with your diploma. Location: Main Street Recreation Center. Min/Max: 8/16.

#/Link	Day	Date	Time	R/NR
132013	M-F	6/24-6/28	1-4pm	\$315/\$375

Little Veterinarian School Cat

Ages 6-10

Camp participants will role-play the key responsibilities of a veterinarian and learn how to care for a cat. These future veterinarians will learn how to remove ticks, perform a nose-to-tail exam, understand proper animal nutrition and hydration, suture lacerations, and more. Location: Main Street Recreation Center. Min/Max: 8/16. (dm)

#/Link	Day	Date	Time	R/NR
132014	M-F	7/29-8/2	9am-12pm	\$315/\$375

Computer Explorers Robot Engineers Camp

Ages 7-12

This camp builds knowledge of simple machines, engineering, programming, and teamwork using the LEGO® WeDo Robotics System, as students use an intuitive, icon-based programming environment, helping to bring their model to life. Location: Spring Avenue Recreation Center. Min/Max: 6/12. (dm)

#/Link	Day	Date	Time	R/NR
132034	M-Th	7/8-7/11	9-10:30am	\$150/\$195

Computer Explorers Beginning Fun-gineering Camp

Ages 4-6

Young engineers will build working models of simple machines such as a seesaw, a rolling vehicle, and hockey player using Lego® Educational kits. Children will have a great time working on activities designed around creativity, exploring, investigating and problem solving in a fun group environment. While building these fun and interactive models, they will learn about levers, pulleys, gears, wheels, and axles. Location: Spring Avenue Recreation Center. Min/Max: 6/12. (dm)

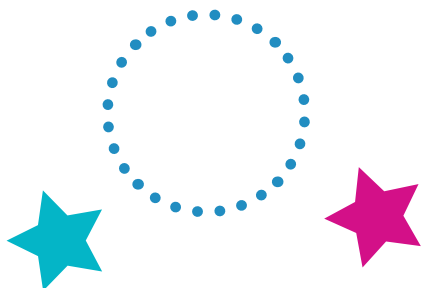
#/Link	Day	Date	Time	R/NR
132036	M-Th	7/8-7/11	11am-12:15pm	\$135/\$180

Computer Explorers Animation Workshop Camp

Ages 7-12

Let's explore the world of animation. In this camp students will learn about different 2D techniques, such as stop-motion animation, creating a cartoon strip or software that will bring life to images. As animators, directors and producers, the only limitation is your imagination. Location: Spring Avenue Recreation Center. Min/Max: 6/10. (dm)

#/Link	Day	Date	Time	R/NR
132035	M-Th	7/8-7/11	12:45-2:15pm	\$150/\$195



Discovery Duos Camp

Age 4 and under with adult

This camp is for little ones and a caregiver. Meet for three days to explore nature together. Emphasis will be on hands-on activities that introduce nature through observations, stories, and discoveries. Location: Churchill Park. Min/Max: 5/10 couples. (1b)

#/Link	Day	Date	Time	R/NR
131683	M-W	7/1-7/3	9-10:30am	\$40/\$48

Fours 4 Nature Camp

Age 4

This preschool nature camp is just for four-year-olds. We will keep the group size small for more personal interactions. We will explore the park's trails, ecosystems, plants, and animals. Stories, activities, crafts, and games will support the various topics. Location: Churchill Park. Min/Max: 5/12. (1b)

#/Link	Day	Date	Time	R/NR
131684	M-F	6/3-6/7	9-11am	\$90/\$108
131685	M-F	6/10-6/14	9-11am	\$90/\$108

Nature Camp

Grades K-1st

This hands-on program will take campers through the fields, woodlands, and wetland areas in search of insects, reptiles, birds, mammals, and the plants these animals need. Stories, crafts, and games support the various topics and will change every two weeks. Each week includes a water day – campers will have the opportunity to explore the edges of the pond or creek. Sign up for one week or all three sessions. Location: Churchill Park. Min/Max: 8/14. (1b)

#/Link	Day	Date	Time	R/NR
Nature Camp I				
131686	M-F	6/3-6/7	9am-12pm	\$130/\$156
131687	M-F	6/10-6/14	9am-12pm	\$130/\$156
Nature Camp II				
131688	M-F	6/17-6/21	9am-12pm	\$130/\$156
131689	M-F	6/24-6/28	9am-12pm	\$130/\$156
Nature Camp III				
131690	M-F	7/8-7/12	9am-12pm	\$130/\$156
131691	M-F	7/15-7/19	9am-12pm	\$130/\$156

Wildlife Camp

Grades 2nd-3rd

Is your child a budding zoologist? Each day we will focus on a different group of animals: mammals, birds, invertebrates, reptiles/amphibians, and a habitat helpers' day. Unique behaviors, adaptations, and interdependence among species will be emphasized as we search for and celebrate wildlife. Each week includes a water day – campers will have the opportunity to explore the edges of the pond or creek, searching for the creatures that make a home there. Location: Churchill Park. Min/Max: 8/14. (1b)

#/Link	Day	Date	Time	R/NR
131692	M-F	7/8-7/12	9am-12pm	\$130/\$156
131693	M-F	7/15-7/19	9am-12pm	\$130-\$156

Eco-Builders Camp

Grades 4th-6th

This nature maker camp will turn the outdoors into an open-air workshop. Campers will assemble and complete a variety of hands-on projects. Some will stay at the park, helping birds and other wildlife. Others will be brought home to enjoy. We will include work to improve native habitats. In addition, campers will have time to explore, hiking the trails and becoming familiar with the resident plants and animals. Eco-Builders have a water day where they are able to wade in the pond and creek. We also test the water and examine the aquatic life within to determine the water quality. Location: Churchill Park. Min/Max: 8/14. (1b)

#/Link	Day	Date	Time	R/NR
131694	M-F	6/17-6/21	9am-12pm	\$140/\$168
131695	M-F	6/24-6/28	9am-12pm	\$140/\$168

Survivor Camp

Grades 6th-8th

This nature camp focuses on acquiring heritage and wilderness skills, such as shelter-building, water purification, fire-starting, unplugged navigation, and knots and lashings. We will spend one day fishing at Lake Ellyn. Campers will observe how wildlife survives and learn to identify dangerous plants. We will practice our new skills by playing games and completing challenges. Location: Churchill Park. Min/Max: 8/14. (1b)

#/Link	Day	Date	Time	R/NR
131696	M-F	7/22-7/26	9am-12pm	\$140/\$168
131697	M-F	7/29-8/2	9am-12pm	\$140/\$168

Birds and Blooms Camp

Grades K-5th

Explore the dazzling world of birds and flowers. Campers will learn how to find, observe, and appreciate birds. Activities will explore birds' "superpowers" of vision and flight. Campers will also celebrate flowers through art, games, and science. Campers will plant flowers and participate in projects that help pollinators and important plants in the park. Campers will have a water day where they can get their feet wet, learning about aquatic flowers and the birds that can be found at our ponds. Location: Churchill Park. Min/Max: 8/14. (lb)

#/Link	Day	Date	Time	R/NR
131698	M-F	7/22-7/26	9am-12pm	\$130/\$156

Mud Buddies Camp

Grades K-5th

This week of camp will highlight the creatures that live in water, mud, and dirt. Campers will get their hands dirty and their feet wet as we spend two days exploring the creek and ponds. We will turn over logs, visit remote parts of the park, and provide plenty of play time. Stories, crafts, and games will support each day's outdoor education topics. Location: Churchill Park. Min/Max: 8/14. (lb)

#/Link	Day	Date	Time	R/NR
131699	M-F	7/29-8/2	9am-12pm	\$130/\$156

Sticky Fingers Cooking Farm to Table Cooking Camp

Ages 4-11

How does our food go from ingredient to recipe to table? Explore the bounty of summer-fresh, local, colorful ingredients. Young chefs will learn about fruits and vegetables that come from the soil, vines, trees, pods, and bushes. Then, we'll whip up some delicious recipes and cultivate lifelong culinary skills. Location: Spring Avenue Recreation Center. Min/Max: 8/12. (dm)

#/Link	Day	Date	Time	R/NR
Ages 4-6				
132001	M-F	6/17-6/21	9:30-11:30am	\$250/\$325
Ages 6-11				
132002	M-F	6/17-6/21	1-4pm	\$390/\$425

Sticky Fingers Cooking Global Taste Buds Camp

Ages 4-11

Cook your way around the world in our globally-inspired cooking camp. What better way to explore another culture than through its food? In this delicious camp, young chefs will cook recipes from countries all around the world and explore food history, explore customs, songs, geography, and languages associated with each recipe. Young chefs will cook and gobble up tasty, healthy cuisine from South America, Europe, Africa, and Asia. Location: Spring Avenue Recreation Center. Min/Max: 8/12. (dm)

#/Link	Day	Date	Time	R/NR
Ages 4-6				
132003	M-F	6/24-6/28	9:30-11:30am	\$250/\$325
Ages 6-11				
132004	M-F	6/24-6/28	1-4pm	\$390/\$425

Sticky Fingers Cooking Kids Cooking Showdown

Ages 6-11

Young chefs will take on cooking challenges inspired by favorite cooking TV shows such as Sugar Rush, Great British Bake Off, Nailed It!, and Cutthroat Kitchen! Young chefs will get their creative juices flowing in this fun and delicious cooking adventure. Location: Spring Avenue Recreation Center. Min/Max: 8/12. (dm)

#/Link	Day	Date	Time	R/NR
132005	M-F	7/15-7/19	9am-12pm	\$390/\$425





Sticky Fingers Cooking S.T.E.A.M Cooking Camp

Ages 6-11

What's especially great about cooking is that it authentically integrates all these skills in one activity. Whether you're measuring ingredients, operating an Instant Pot, stacking sushi roll ingredients, plating a meal, or scaling a recipe, you're switching among all the S.T.E.A.M. skills. And it's not just the skills you're practicing, but also the different ways of thinking. The kitchen, after all, is a place for problem-solving, innovation, creative/critical thinking, and collaboration. Location: Spring Avenue Recreation Center. Min/Max: 8/12. (dm)

#/Link	Day	Date	Time	R/NR
132010	M-F	8/12-8/16	1-4pm	\$390/\$425

Sticky Fingers Cooking Basic Training Baking Boot Camp

Ages 4-11

Aspiring bakers who love to get their hands sticky in the kitchen will love this camp. Learn the basics of scratch baking from pita bread to lemon tarts to cornbread. Young chefs will love creating sweet and savory baked goods in this tasty and imaginative camp. Location: Spring Avenue Recreation Center. Min/Max: 8/12. (dm)

#/Link	Day	Date	Time	R/NR
Ages 4-6				
132006	M-F	7/29-8/2	9:30-11:30am	\$250/\$325
Ages 6-11				
132007	M-F	7/29-8/2	1-4pm	\$390/\$425

Sticky Fingers Cooking Cooks+Books Camp

Ages 4-11

Your child will do the chopping, grating, prepping, and cooking-oh MY. And you will end up with an inspired & excited new young chef in your family and a freshly prepared meal on the table. Family meals will also become more fun and exciting; When kids get to learn about the ingredients in their recipes and have a hand in creating their food, they're much more willing to try new foods. There is a world of flavor to enjoy right now and right in your own kitchens. Location: Spring Avenue Recreation Center. Min/Max: 8/12. (dm)

#/Link	Day	Date	Time	R/NR
Ages 4-6				
132008	M-F	8/5-8/9	9:30-11:30am	\$250/\$325
Ages 6-11				
132009	M-F	8/5-8/9	1-4pm	\$390/\$425

Chess Wizards Summer Camp

Ages 6-12

Team chess games, puzzles, skill-building, and team and individual physical games are just some of the ways we integrate the whole person into our camp activities. A sample day might include exploration of a technical chess concept, fun group challenges which hone specific chess thinking patterns, a healthy snack, a mini-tournament, capture-the-flag, and blob tag. Or creating and designing your own chess piece to be used in a practice game with your new friends. After all, it's camp...we want our students to make memories that they will carry with them through the upcoming school year and beyond. Participants will receive a trophy, Chess Wizards t-shirt, folder, and a chess puzzle workbook. Bring your own lunch if you attend the full day option. Location: Main Street Recreation Center. Min/Max: 12/24. (dm)

#/Link	Day	Date	Time	R/NR
131995	M-F	6/24-6/28	9am-12pm	\$280/\$325
131996	M-F	6/24-6/28	12-3pm	\$280/\$325
131997	M-F	6/24-6/28	9am-3pm	\$380/\$425
131998	M-F	8/5-8/9	9am-12pm	\$280/\$325
131999	M-F	8/5-8/9	12-3pm	\$280/\$325
132000	M-F	8/5-8/9	9am-3pm	\$380/\$425



Sewing Machine Basics Camp

Ages 8-13

Participants will learn to sew using store bought fabric. The purpose is to help all participants become familiar with using a sewing machine. Instruction will focus on helping students learn how to understand a pattern and sew on a sewing machine to create some fun projects. A variety of usable projects will be made as students increase their sewing skills. Bring one yard of cotton fabric, all other supplies will be provided. Bring your own sewing machine or use one of ours. Location: Spring Avenue Recreation Center. Min/Max: 3/9. (dm)

#/Link	Day	Date	Time	R/NR
131983	M-Th	6/10-6/13	9:30-11:30am	\$200/\$250
131984	M-Th	6/10-6/13	1-3pm	\$200/\$250

Creative Clay-Makers

Ages 9-12

Bring a lunch and your creativity for four days full of clay-making fun. Participants will learn a variety of hand building methods including pinch, coil, slab, slump, and mosaic to create several fantastic projects. Some projects will be completed during the week while others will be ready for pick up within 2 weeks after they have been kiln-fired. Ackerman SFC. Min/Max: 8/15. (rb)

#/Link	Day	Date	Time	R/NR
131700	M-Th	6/10-6/13	10am-1pm	\$285
131701	M-Th	7/15-7/18	10am-1pm	\$285
131702	M-Th	8/5-8/8	10am-1pm	\$285

Dance Academy Mini Camp

Ages 5-8

Experience a week full of dance activities, including arts and crafts, group games, story time, and basic dance technique. No dance experience is necessary to join this camp. Dancers should wear clothes that allow them to move around and dance shoes, and bring a water bottle and snack. The last day of camp, our dancers will show off their new moves for friends and family. Location: Spring Avenue Recreation Center. Min/Max: 6/20. (ks)

#/Link	Day	Date	Time	R/NR
131749	M-Th	6/10-6/13	9:30-11:30am	\$105/\$160
131750	M-Th	8/5-8/8	9:30-11:30am	\$105/\$160



Mini Musical Camp

Ages 7-18

Step into the spotlight with a camp that introduces theatre to your child with a variety of activities. Campers will experience the true art of theatre through acting, singing, choreography, blocking, improvisation, audition preparation, and more. Our rising stars will put together a final mini musical production for family and friends to finish off the week. Campers will need to bring a lunch and water bottle. Location: Main Street Recreation Center. Min/Max: 6/20. (ks)

#/Link	Day	Date	Time	R/NR
131751	M-F	6/24-6/28	9am-3pm	\$260/\$390

Art of Acting Camp

Ages 10-15

Embark on a daily adventure where our specialized program immerses aspiring performers in diverse skills with a unique focus each day. Campers delve into improvisation, analyze comedic and dramatic characters, and master the art of delivering compelling monologues. The week concludes with a dazzling showcase, allowing participants to present their polished monologues to friends and family, showcasing their journey in the world of acting. Location: Spring Avenue Recreation Center. Min/Max: 10/18. (ks)

#/Link	Day	Date	Time	R/NR
131821	M-F	7/15-7/19	1-4pm	\$150/\$225

Princess Camp

Ages 4-6

Become your favorite princess and experience the royal life. Camp includes stories, art, games, and activities perfect for aspiring royalty. Participants are encouraged to dress as their favorite princess, or princess of the day. Expect visits from Snow White, Cinderella, Elsa & Anna, Rapunzel, and Belle throughout the week. Location: Ackerman SFC. Min/Max: 5/30. (rb)

#/Link	Day	Date	Time	R/NR
131591	M-F	6/17-6/21	10-11am	\$65/\$95
131592	M-F	7/15-7/19	10-11am	\$65/\$95
131818	M-F	7/29-8/2	10-11am	\$65/\$95
131593	M-F	8/12-8/16	10-11am	\$65/\$95

Young Lightsabers Camp

Ages 5-9

Come on a galaxy adventure where we train like Jedi Masters. This camp is filled with creative activities that promote both imagination and movement for healthy bodies and minds. Be sure to bring your own light-up lightsaber for our lights out duels. Location: Ackerman SFC. Min/Max: 5/30. (rb)

#/Link	Day	Date	Time	R/NR
131594	M-F	6/3-6/7	12-1pm	\$65/\$95
131595	M-F	7/22-7/26	12-1pm	\$65/\$95
131596	M-F	8/5-8/9	12-1pm	\$65/\$95

Tween Arts & Crafts Camp

Ages 10-13

If your child loves to draw, paint, experiment with model clay, or is interested in any kind of creative art, this camp is for them! All supplies included. Location: Ackerman SFC. Min/Max: 5/25. (rb)

#/Link	Day	Date	Time	R/NR
131597	M-F	6/10-6/14	2-3pm	\$65/\$95
131598	M-F	7/8-7/12	2-3pm	\$65/\$95
131599	M-F	8/5-8/9	2-3pm	\$65/\$95

Fantastic Magic Camp

Ages 7-13

Build confidence and engage with a lively community of fellow magicians. The Great Toddini of Glen Ellyn will introduce participants to the wonder and excitement of magic. Every student will learn sleight of hand, impromptu tricks with props, and more. Different themes and skills will be showcased every week. The final session will be a live performance by every student that caregivers are encouraged to attend. Location: Ackerman SFC. Min/Max: 8/15. (rb)

#/Link	Day	Date	Time	R/NR
131707	M-F	7/29-8/2	6-7pm	\$70/\$105

Dunham Woods Farm Horse Camp for Kids

Ages 9-13

Campers will learn the proper ways to groom, tack and handle horses, the basics of riding at the walk and trot, and tons of cool information about breeds, colors, and markings of horses. We will also have fun with games and other activities. Riders should wear jeans or Jodhpur pants and hard soled riding or hiking boots with a small, low heel. Campers must bring an approved riding helmet or bicycle helmet to ride, and a sack lunch. Juice boxes or bottled water will be provided. Location: Dunham Woods Farm. Min/Max: 1/2. (dm)

#/Link	Day	Date	Time	R/NR
131974	Tu-W	6/4-6/5	11:20am-2pm	\$225/\$275
131976	Tu-W	6/4-6/12	11:20am-2pm	\$350/\$400
131975	Tu-W	6/11-6/12	11:20am-2pm	\$225/\$275
131977	Tu-W	7/9-7/10	11:20am-2pm	\$225/\$275
131979	Tu-W	7/9-7/17	11:20am-2pm	\$350/\$400
131978	Tu-W	7/16-7/17	11:20am-2pm	\$225/\$275
131980	Tu-W	7/30-7/31	11:20am-2pm	\$225/\$275
131982	Tu-W	7/30-8/7	11:20am-2pm	\$350/\$400
131981	Tu-W	8/6-8/7	11:20am-2pm	\$225/\$275



Spartan Basketball Camp

Grades 4th-8th (as of Fall 2024)

Campers are taught basic basketball fundamentals, including individual skills for shooting, passing, dribbling, footwork, rebounding, and defense. With an emphasis placed on teamwork, campers practice those skills in daily contests and scrimmages. Location: Glen Crest Middle School. Min/Max: 10/35. (cb)

#/Link	Grade	Day	Date	Time	R/NR
Girls					
131709	4th-6th	M-F	6/3-6/21	2:30-4pm	\$100
131710	7th-8th	M-F	6/3-6/21	12:45-2:15pm	\$100
Boys					
131711	5th-6th	M-F	6/3-6/21	10:15-11:45am	\$100
131712	7th-8th	M-F	6/3-6/21	8:30-10am	\$100

Coach Faulkner Girls Basketball Camp

Grades 2nd-5th

This camp is led by Kristi Faulkner, who is the Girls Varsity Head Coach at Glenbard West. Participants will work on various skills and drills to enhance their basketball skills. Games will be played each day of camp incorporating the skills that were worked on that day. Camp will utilize all three courts and participants will be divided based on age. All participants are required to bring their own basketball. Location: Ackerman SFC. Min/Max: 20/75. (dt)

#/Link	Day	Date	Time	R/NR
131136	M-F	6/3-6/7	10:30am-12pm	\$155/\$205

Big 3 Sports Basketball Camp

Grades 1st-4th

Join the Big 3 Basketball coaches as players will learn the basics in dribbling, passing, shooting, and game strategies. Each day will include drills, skills, and live gameplay. Participants are required to provide their own basketball. Location: Ackerman SFC. Min/Max: 8/25. (rb)

#/Link	Grade	Day	Date	Time	R/NR
131768	1st-2nd	M-W	7/8-7/10	10-11am	\$60/\$90
131769	3rd-4th	M-W	7/8-7/10	11am-12pm	\$60/\$90
131770	1st-2nd	M-W	7/15-7/17	10-11am	\$60/\$90
131771	3rd-4th	M-W	7/15-7/17	11am-12pm	\$60/\$90
131772	1st-2nd	M-W	7/22-7/24	10-11am	\$60/\$90
131773	3rd-4th	M-W	7/22-7/24	11am-12pm	\$60/\$90
131774	1st-2nd	M-W	7/29-7/31	10-11am	\$60/\$90
131775	3rd-4th	M-W	7/29-7/31	11am-12pm	\$60/\$90

Coach Giunta-Mayer Basketball Skills Camp

Grades 1st-6th

Basketball Coach Christine Giunta-Mayer will teach participants the basic techniques of shooting, dribbling, passing, rebounding, and defense. This camp will not only provide a fundamental base for each player, but will also be an enjoyable experience. Location: Ackerman SFC. Min/Max: 5/40. (rb)

#/Link	Grade	Day	Date	Time	R/NR
131799	1st-2nd	M-Th	6/10-6/13	1-2pm	\$100/\$115
131800	3rd-4th	M-Th	6/10-6/13	2-3pm	\$100/\$115
131801	5th-6th	M-Th	6/10-6/13	3-4pm	\$100/\$115
131802	3rd-4th	M-Th	7/8-7/11	2-3pm	\$100/\$115
131803	1st-2nd	M-Th	7/8-7/11	3-4pm	\$100/\$115
131804	1st-2nd	M-Th	7/29-8/1	12-1pm	\$100/\$115
131805	3rd-4th	M-Th	7/29-8/1	1-2pm	\$100/\$115

Bulls Kid Nation Youth Hoops Summer Camp by BMO

Ages 5-14

Sign your kids up to join the Bulls for this 5-day program designed to improve participants basketball skills while providing an unforgettable experience. This program is intended for players of all skill levels. Participants will be split into groups by age and ability, allowing for fine-tuned curriculum and individualized challenges. Participants will practice fundamentals and improve their game through on-court play, while also taking part in leadership and teamwork development. Participants will receive Chicago Bulls Tickets Offers (subject to change), Youth Hoops Swag Bag, and opportunities to participate in the Bulls Skills Challenge for a chance to win exclusive prizes. Location: Ackerman SFC. Min/Max: 20/60. (rb)

Registration can be completed at www.bulls.com/kidnation.

Day	Date	Time	R/NR
M-F	6/24-6/28	9am-12pm	\$200
M-F	6/24-6/28	1-4pm	\$200

Serious Game Basketball – Rising Rookies Triple Threat Camp

Grades 2nd-4th

The Rising Rookies Triple Threat Camp is a great opportunity for young basketball enthusiasts to improve their ball handling, shooting, and finishing skills with the help of experienced coaches. Designed specifically for beginners, this camp is designed to provide a nurturing and skill-building environment for players who are eager to embrace the sport and take their first steps toward becoming rising stars. Location: Ackerman SFC. Min/Max: 8/25. (rb)

#/Link	Day	Date	Time	R/NR
131822	M/W/F	6/3-6/7	12-1pm	\$65/\$95
131823	M/W/F	6/17-6/21	2-3pm	\$65/\$95
131824	M/W/F	7/1-7/5	2-3pm	\$65/\$95
131825	M/W/F	7/8-7/12	11am-12pm	\$65/\$95
131826	M/W/F	8/5-8/9	2-3pm	\$65/\$95
131827	M/W/F	8/12-8/16	2-3pm	\$65/\$95

Serious Game Basketball – Rising Stars Triple Threat Camp

Grades 5th-8th

The Rising Rookies Triple Threat Camp is a great opportunity for young basketball enthusiasts to improve their ball handling, shooting, and finishing skills with the help of experienced coaches. Designed specifically for beginners, this camp is designed to provide a nurturing and skill-building environment for players who are eager to embrace the sport and take their first steps toward becoming rising stars. Location: Ackerman SFC. Min/Max: 8/25. (rb)

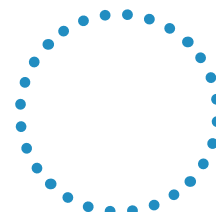
#/Link	Grade	Day	Date	Time	R/NR
131828	5th-6th	M/W/F	6/3-6/7	1-2pm	\$65/\$95
131829	7th-8th	M/W/F	6/3-6/7	2-3pm	\$65/\$95
131830	5th-6th	M/W/F	6/17-6/21	3-4pm	\$65/\$95
131831	7th-8th	M/W/F	6/17-6/21	4-5pm	\$65/\$95
131832	5th-6th	M/W/F	7/1-7/5	3-4pm	\$65/\$95
131833	7th-8th	M/W/F	7/1-7/5	4-5pm	\$65/\$95
131834	5th-6th	M/W/F	7/8-7/12	12-1pm	\$65/\$95
131835	7th-8th	M/W/F	7/8-7/12	1-2pm	\$65/\$95
131836	5th-6th	M/W/F	8/5-8/9	3-4pm	\$65/\$95
131837	7th-8th	M/W/F	8/5-8/9	4-5pm	\$65/\$95
131838	5th-6th	M/W/F	8/12-8/16	3-4pm	\$65/\$95
131839	7th-8th	M/W/F	8/12-8/16	4-5pm	\$65/\$95

Sand Volleyball Camp

Ages 9-12

Develop volleyball skills, strategy, and technique. Participants will receive a solid foundation on the fundamental skills of sand volleyball through fun and active drills and daily scrimmages. Location: Ackerman SFC. Min/Max: 5/30. (rb)

#/Link	Day	Date	Time	R/NR
131603	M-F	6/3-6/7	9-10am	\$65/\$95
131604	M-F	7/22-7/26	9-10am	\$65/\$95
131605	M-F	8/12-8/16	9-10am	\$65/\$95





Coach Giunta-Mayer Volleyball Skills Camp

Grades 1st-8th

Glenbard West State Champion Coach Christine Giunta-Mayer will focus on fundamental training and individual skills for passing, setting, blocking, and serving. Young athletes will improve their volleyball skills and develop proper playing habits. Location: Ackerman SFC. Min/Max: 5/40. (rb)

#/Link	Grade	Day	Date	Time	R/NR
Girls					
131778	1st-2nd	M-Th	6/3-6/6	1-2pm	\$100/\$115
131782	1st-2nd	M-Th	6/10-6/13	12-1pm	\$100/\$115
131790	1st-3rd	M-Th	7/29-8/1	2-3pm	\$100/\$115
131786	3rd-4th	M-Th	7/8-7/11	1-2pm	\$100/\$115
131776	3rd-5th	M-Th	6/3-6/6	12-1pm	\$100/\$115
131784	3rd-6th	M-Th	6/10-6/13	1-2pm	\$100/\$115
131792	4th-6th	M-Th	7/29-8/1	3-4pm	\$100/\$115
131788	5th-8th	M-Th	7/8-7/11	2-3pm	\$100/\$115
131780	6th-8th	M-Th	6/3-6/6	2-3pm	\$100/\$115
131794	7th-8th	M-Th	7/29-8/1	4-5pm	\$100/\$115
Boys					
131779	1st-2nd	M-Th	6/3-6/6	1-2pm	\$100/\$115
131783	1st-2nd	M-Th	6/10-6/13	12-1pm	\$100/\$115
131791	1st-3rd	M-Th	7/29-8/1	2-3pm	\$100/\$115
131787	3rd-4th	M-Th	7/8-7/11	1-2pm	\$100/\$115
131777	3rd-5th	M-Th	6/3-6/6	12-1pm	\$100/\$115
131785	3rd-6th	M-Th	6/10-6/13	1-2pm	\$100/\$115
131793	4th-6th	M-Th	7/29-8/1	3-4pm	\$100/\$115
131789	5th-8th	M-Th	7/8-7/11	2-3pm	\$100/\$115
131781	6th-8th	M-Th	6/3-6/6	2-3pm	\$100/\$115
131795	7th-8th	M-Th	7/29-8/1	4-5pm	\$100/\$115
Co-Ed					
131796	1st-3rd	M-Th	8/5-8/8	9-10am	\$100/\$115
131797	4th-5th	M-Th	8/5-8/8	10-11am	\$100/\$115
131798	6th-8th	M-Th	8/5-8/8	11am-12pm	\$100/\$115

Spartan Volleyball Camp

Grades 5th-8th (as of Fall 2024)

Campers focus on the fundamentals of team offense including passing, setting and spiking, along with team defense and blocking. Location: Glen Crest Middle School. Min/Max: 10/35. No camp 7/4. (cb)

#/Link	Grade	Day	Date	Time	R/NR
Girls					
131713	5th	M-F	6/24-7/5	12-1pm	\$80
131714	6th-7th	M-F	6/24-7/5	10-11:30am	\$80
131715	8th	M-F	6/24-7/5	8:30-10am	\$80
Boys					
131716	5th	M-F	6/24-7/5	12-1pm	\$80
131717	6th	M-F	6/24-7/5	10-11:30am	\$80
131718	7th-8th	M-F	6/24-7/5	8:30-10am	\$80

Cyclones Volleyball Camp

Grades 3rd-8th

The area's top club team, the Cyclones, will teach students the fundamentals of passing, setting, and spiking. The lesson plan directs the use of self-mastery training that helps each student reach a new level in preparation for the upcoming season. Equipment provided. Location: College of DuPage Physical Education Center. Min/Max: 10/30. (dt)

#/Link	Day	Date	Time	R/NR
Grades 3rd-5th				
131137	M-Th	6/24-6/27	12:30-2:30pm	\$115/\$175
Grades 6th-8th				
131138	M-Th	7/22-7/25	12:30-3pm	\$150/\$225

Chicago Red Stars Soccer Camp

Boys ages 7-14 and girls ages 7-16

Challenge yourself with a more intense and competitive soccer camp experience with the Chicago Red Stars. Our coaches, which include current and former Red Stars players, train participants using the same skill development and tactical awareness that is used to create World Cup and Olympic champions at the Red Stars. Campers will receive a Red Stars Academy t-shirt, a free ticket to a home game, as well as other giveaways throughout the week. Location: Ackerman Park. Min/Max: 12/75. (da)

#/Link	Day	Date	Time	R/NR
132021	M-F	7/8-7/12	9am-12pm	\$255/\$300

Chicago Fire Little Sparks Soccer Camp

Ages 3-5

Little Sparks is Chicago Fire's introduction to soccer program, where participants take their first steps in soccer. Adults/caregivers are encouraged to participate. Camp will take participants on an exciting journey using imaginative stories to explore the game, while our coaches focus on their holistic development. Little Sparks uses three core principles: experiential play, creative learning, and holistic activity to create an environment for children to learn, play, and have fun. Location: Ackerman Park. Min/Max: 10/25. (da)

#/Link	Day	Date	Time	R/NR
132022	M-F	6/24-6/28	8-9am	\$115/\$165
132023	M-F	8/5-8/9	8-9am	\$115/\$165

Chicago Fire Soccer Camp

Ages 6-12

Chicago Fire camps are designed for participants of all ages and abilities to develop their soccer skills through a tailored camp curriculum and authentic soccer experience. Camps provide professional coach instruction to develop technical ability, social-emotional learning, and love for the game. All participants will receive a Chicago Fire t-shirt, registration to its Kid's Club, a Chicago Fire poster, and a ticket to a game at Soldier Field. Location: Ackerman Park. Min/Max: 10/30. (da)

#/Link	Day	Date	Time	R/NR
132024	M-F	6/24-6/28	9am-12pm	\$195/\$255
132025	M-F	8/5-8/9	9am-12pm	\$195/\$255

Challenger British Soccer Camps

Ages 6-14

Challenger British Soccer Camps give children a week of coaching and confidence building from a staff of specially trained international soccer athletes. Each day includes foot skills, technical drills, tactical practices, small-sided games, coached scrimmages, and a daily tournament. Campers receive a British Soccer Camp t-shirt, an individual skills evaluation, and poster. Location: Ackerman Park. Min/Max: 10/30. (da)

#/Link	Day	Date	Time	R/NR
Ages 3-5				
132026	M-F	6/3-6/7	9-10am	\$115/\$165
132027	M-F	7/15-7/19	9-10am	\$115/\$165
Ages 6-14				
132028	M-F	6/3-6/7	10:30am-1:30pm	\$160/\$215
132029	M-F	7/15-7/19	10:30am-1:30pm	\$160/\$215

Everton International Soccer Schools

Ages 5-14

Everton are coming to the U.S. this summer! Open to ages 5-14, across all abilities with two distinct programs, Everton are hosting camps to suit the recreational player or those more advanced and looking to take their game to the next level. All camp curriculums are fully bespoke and designed by Everton Academy coaches specifically for our U.S. soccer schools. Get a taste of the English Premier League this summer. All participants receive an ESIS training jersey, Everton FC gift, and evaluation. Location: Ackerman Park. Min/Max: 10/30. (da)

#/Link	Day	Date	Time	R/NR
Ages 5-7				
132030	M-F	7/29-8/2	9-10:30am	\$150/\$225
132031	M-F	7/29-8/2	10:45am-12:15pm	\$150/\$225
Ages 8-14				
132032	M-F	7/29-8/2	9am-12pm	\$220/\$330



Future Pros Pee Wee Soccer Camp

Ages 4-6

Introduce your little one to the game of soccer! This class offers a perfect blend of fun activities and basic soccer skills. The primary focus is fun in a safe and structured environment through games and drills. Each participant receives a soccer ball. Location: Ackerman Park. Min/Max: 10/25. (da)

#/Link	Day	Date	Time	R/NR
132015	M-F	6/10-6/14	9-10:30am	\$115/\$165
132016	M-F	6/17-6/21	9-10:30am	\$115/\$165
132017	M-F	7/22-7/26	9-10:30am	\$115/\$165

Future Pros Open Soccer Camp

Ages 7-14

With increased skill comes increased success. With increased success comes a higher level of enjoyment. We will focus on the development of technical and tactical ability through games and drills. Players are divided by age and ability level for proper instruction. Each participant receives a soccer ball. Location: Ackerman Park. Min/Max: 10/40. (da)

#/Link	Day	Date	Time	R/NR
132018	M-F	6/10-6/14	9am-12pm	\$160/\$215
132019	M-F	6/17-6/21	9am-12pm	\$160/\$215
132020	M-F	7/22-7/26	9am-12pm	\$160/\$215

RISE Field Hockey Pre-Season Training Camp

Grades 6th-12th

Join RISE Field Hockey coaches for a final skills and training session before the high school season begins. All incoming 6th-12th graders are invited. Participants must bring their own stick, shin guards, and mouth guard. Location: Newton Park. Min/Max: 10/45. (dt)

#/Link	Day	Date	Time	R/NR
131145	M-Th	7/22-7/25	10-11:30am	\$145

Bulldogs Boys Summer Lacrosse

Grades 2nd-8th (as of Fall 2024)

Speed Lax: Have some fun and keep your skills sharp this summer. This program will be run in a pick-up game format. Coaches will divide the players into teams each week and act as coaching officials in the games. Full pads/equipment are required. Min/Max: 10/50. Location: Newton Park. (cb)

#/Link	Grade	Day	Date	Time	R/NR
131719	2nd-4th	W	6/19-7/24	5:30-6:30pm	\$50
131720	5th-8th	W	6/19-7/24	6:30-8pm	\$50





East Ave Lacrosse Girls Lacrosse Camp

Grades Pre-K to 8th (as of Fall 2024)

Learn why lacrosse is the fastest growing sport in America during this fun, fast-paced camp led by East Ave. Lacrosse. Participants must bring their own stick, goggles, mouthguard and drink to camp. If needed, a limited amount of equipment is available to rent through East Ave. Lacrosse. Email jerry@eastavelacrosse.com for equipment rental information. Not affiliated with Glenbard West High School. Location: Newton Park. Min/Max: 10/40. (cb)

#/Link	Day	Date	Time	R/NR
Grades Pre-K to 2nd				
131806	M-Th	6/10-6/13	8:30-9:30am	\$150
131808	M-Th	6/24-6/27	8:30-9:30am	\$150
Grades 3rd-8th				
131807	M-Th	6/10-6/13	8:30-10am	\$185
131809	M-Th	6/24-6/27	8:30-10am	\$185

East Ave Lacrosse Boys Lacrosse Camp

Grades 1st-8th (as of Fall 2024)

Led by East Ave. Lacrosse, these camps focus on the fundamentals and mechanics of the game. Participants must bring their own stick, helmet, gloves, mouthguard and drink to camp. If needed, a limited amount of equipment is available to rent through East Ave. Lacrosse. Email jerry@eastavelacrosse.com for equipment rental information. Not affiliated with Glenbard West High School. Location: Newton Park. Min/Max: 10/40. (cb)

#/Link	Day	Date	Time	R/NR
Grades Pre-K to 2nd				
131810	M-Th	6/10-6/13	8:30-9:30am	\$150
131812	M-Th	6/24-6/27	8:30-9:30am	\$150
Grades 3rd-8th				
131811	M-Th	6/10-6/13	8:30-10am	\$185
131813	M-Th	6/24-6/27	8:30-10am	\$185



True Lacrosse Boys Lacrosse Camp

Grades 1st-8th (as of Fall 2024)

Join True Lacrosse coaches for this 4-day camp. Players will work on individualized stickwork, positional play, and situational gameplay in a fun, fast-paced environment. Full pads/equipment are required. Not affiliated with Glenbard West High School. Location: Newton Park. Min/Max: 10/40. (cb)

#/Link	Day	Date	Time	R/NR
Grades 1st-4th				
131814	M-Th	6/17-6/20	8-10am	\$200
Grades 5th-8th				
131815	M-Th	6/17-6/20	10am-12pm	\$200

Chicago White Sox Baseball Camp

Ages 5-12

Learn from the pros this summer at a White Sox Summer Camp presented by Wintrust, with participating partner, Topps! Professional coaches from the White Sox organization have helped build programs designed for kids ages 5-12 at every ability level. All campers will work on throwing, hitting, fielding, and base-running, but more importantly, they will be taught how to love the game of baseball. Instructors will supervise campers based off-of age and ability, and cater each experience to meet your child's needs. On top of the four (4) days of camp, each camper will receive tickets to a White Sox game (date TBD), a White Sox t-shirt, hat, and other various White Sox goodies. Location: Village Green Park. Min/Max: 16/64. (cb)

Registration is completed online at whitesox.com/play.

Day	Date	Time	R/NR
M-Th	6/24-6/27	1-4pm	\$165
M-Th	8/5-8/8	8:30-11:30am	\$165

Ackerman SFC Adult/Tot Sports Camp

Ages 2-5 with adult

Adults play an integral part in helping their tots develop basic sports movement and motor skills. Motor skill activities focus on hand-eye and hand-foot coordination. Sports equipment and instruction are provided to help guide your child through an introduction to organized sports. Adult or caregiver participation is required. Location: Ackerman SFC. Min/Max: 8/30. (rb)

#/Link	Day	Date	Time	R/NR
131703	M-F	6/24-6/28	12-1pm	\$65/\$95
131705	M-F	7/15-7/19	12-1pm	\$65/\$95
131704	M-F	7/29-8/2	12-1pm	\$65/\$95

Ackerman SFC Youth Flag Football Camp

Ages 8-12

Participants will be taught the fundamentals of football on the offensive and defensive sides of the ball and will go through a variety of drills, games, and contests to develop their football skill set. Location: Ackerman SFC. Min/Max: 10/30. (rb)

#/Link	Day	Date	Time	R/NR
131600	M-F	6/3-6/7	12:30-1:30pm	\$65/\$95
131601	M-F	7/8-7/12	12:30-1:30pm	\$65/\$95
131819	M-F	7/29-8/2	12-1pm	\$65/\$95
131602	M-F	8/5-8/9	12:30-1:30pm	\$65/\$95

Ackerman SFC Fit Camp

Ages 10-14

The Ackerman SFC team of experienced fitness professionals is excited to bring a complete fitness program to the youth of our community. Each day will start with a total body stretch and dynamic warmup to get the body ready for the day's workouts. From there, we will go into Performance Training focusing on speed, agility, strength, mobility, and injury prevention. Next up, is Cycle to help build endurance and heart health. The day will finish with Yoga to help release any tension of the body and mind. Stress relief relaxation will take place at the end of class. Location: Ackerman SFC. Min/Max: 5/15. (br)

#/Link	Day	Date	Time	R/NR
131679	M-F	6/3-6/7	9am-12pm	\$150/\$175

Ackerman Sports and Fun Camp

Grades 1st-8th

Keep your child active, entertained, and having fun all summer long. Our camp counselors will keep campers engaged with gym games, organized sports, arts and crafts, board games, and special themed days like Tie Dye Tuesday, Water Wednesday, and Friday Fun-day. Location: Ackerman SFC. Min/Max: 20/75. (rb)

#/Link	Day	Date	Time	R/NR
131606	M-F	6/3-6/7	9am-12pm	\$105/\$155
131607	M-F	6/3-6/7	12:30-3:30pm	\$105/\$155
131608	M-F	6/10-6/14	9am-12pm	\$105/\$155
131609	M-F	6/10-6/14	12:30-3:30pm	\$105/\$155
131610	M-F	6/17-6/21	9am-12pm	\$105/\$155
131611	M-F	6/17-6/21	12:30-3:30pm	\$105/\$155
131612	M-F	6/24-6/28	9am-12pm	\$105/\$155
131613	M-F	6/24-6/28	12:30-3:30pm	\$105/\$155
131614	M-W	7/1-7/3	9am-12pm	\$65/\$95
131615	M-W	7/1-7/3	12:30-3:30pm	\$65/\$95
131616	M-F	7/8-7/12	9am-12pm	\$105/\$155
131617	M-F	7/8-7/12	12:30-3:30pm	\$105/\$155
131618	M-F	7/15-7/19	9am-12pm	\$105/\$155
131619	M-F	7/15-7/19	12:30-3:30pm	\$105/\$155
131620	M-F	7/22-7/26	9am-12pm	\$105/\$155
131621	M-F	7/22-7/26	12:30-3:30pm	\$105/\$155
131622	M-F	7/29-8/2	9am-12pm	\$105/\$155
131623	M-F	7/29-8/2	12:30-3:30pm	\$105/\$155
131624	M-F	8/5-8/9	9am-12pm	\$105/\$155
131625	M-F	8/5-8/9	12:30-3:30pm	\$105/\$155
131626	M-F	8/12-8/16	9am-12pm	\$105/\$155
131627	M-F	8/12-8/16	12:30-3:30pm	\$105/\$155

Ackerman Speed Camp

Ages 10-14

Help your young athlete take their sports performance to the next level during the off-season in this week-long camp. Speed, agility, and quickness are three of the top athletic qualities required to excel in many sports. Ackerman SFC personal training staff will lead a small group of athletes through various exercises. Location: Ackerman SFC. Min/Max: 10/30. (rb)

#/Link	Day	Date	Time	R/NR
131840	M-F	6/10-6/14	11am-12pm	\$65/\$95
131841	M-F	6/24-6/28	11am-12pm	\$65/\$95
131842	M-F	7/8-7/12	11am-12pm	\$65/\$95
131843	M-F	7/22-7/26	11am-12pm	\$65/\$95
131844	M-F	8/5-8/9	11am-12pm	\$65/\$95



Tennis and Swim Camp

Grades 3rd-4th

Trust and teamwork are essential to having an effective team in any sport. It helps with team cohesion and helps the team reach its full potential. During this four-day camp, Glenbard West Coach Christine Giunta-Mayer will show young athletes how teammates can connect in a competitive, yet positive, environment. Participants will work on team building and cooperation skills through a variety of games, sports, and activities. Location: Sunset Park & Sunset Pool. Min/Max: 4/32. (bt)

#/Link	Day	Date	Time	R/NR
131752	M-W	6/10-6/12	1-3:30pm	\$130/\$190
131753	M-W	6/17-6/19	1-3:30pm	\$130/\$190
131754	M-W	6/24-6/26	1-3:30pm	\$130/\$190
131755	M-W	7/8-7/10	1-3:30pm	\$130/\$190
131756	M-W	7/15-7/17	1-3:30pm	\$130/\$190
131757	M-W	7/22-7/24	1-3:30pm	\$130/\$190
131758	M-W	8/5-8/7	1-3:30pm	\$130/\$190

Summer Tennis Mini Camp

Ages 6-10

Enjoy learning or improving your skills at the end of summer tennis mini camp. Bring your friends for a fun, social atmosphere of drills and games. All ability levels are welcome. Location: Glenbard West Memorial Courts. Min/Max: 4/32. (bt)

#/Link	Day	Date	Time	R/NR
131759	M-W	8/5-8/7	9-11am	\$110/\$150

Chicago Union Ultimate Frisbee Camp

Ages 9-13

Ultimate is a non-contact, action packed sport played with a flying disc that emphasizes teamwork and respect for your opponent, in addition to running hard and jumping high. Camp participants will learn the basic rules and strategies of Ultimate, how to throw and catch, on and off field leadership, and teamwork skills. All camp participants receive a Chicago Union disc, free t-shirt, and 4 tickets to a professional ultimate game. All ability levels are encouraged to join. Location: Ackerman Park. Min/Max: 10/50. (dt)

#/Link	Day	Date	Time	R/NR
131133	M-F	6/10-6/14	1-3:30pm	\$130/\$195
131134	M-F	6/24-6/28	1-3:30pm	\$130/\$195

Youth Pickleball Camp

Ages 9-15

Learn the basics of pickleball in this weeklong camp. Students will have a blast participating in various drills and exercises to enhance the learning experience. All skill levels are welcome. Participants are encouraged to provide their own paddle. Location: George Ball Park. Min/Max: 6/16. (rb)

#/Link	Day	Date	Time	R/NR
Ages 9-11				
131760	M-Th	6/17-6/20	10-11am	\$80/\$120
131761	M-Th	6/24-6/27	10-11am	\$80/\$120
131762	M-Th	7/8-7/11	10-11am	\$80/\$120
131763	M-Th	7/15-7/18	10-11am	\$80/\$120
Ages 12-15				
131764	M-Th	6/17-6/20	11am-12pm	\$80/\$120
131765	M-Th	6/24-6/27	11am-12pm	\$80/\$120
131766	M-Th	7/8-7/11	11am-12pm	\$80/\$120
131767	M-Th	7/15-7/18	11am-12pm	\$80/\$120

COMING SOON!

Glenbard West & South Camps

Please be aware that Glenbard West and South are in the process of planning their 2024 summer camps. More information on those camps will be released at a later date at gepark.org/playbook.

district policies

DEFINITION OF RESIDENCY

Not all Glen Ellyn residents are in the Park District. Anyone living within the geographic boundaries of the Glen Ellyn Park District is considered a resident. Glen Ellyn Park District residents, via property taxes, make financial contributions to the operation of the park system. Non-residents are charged higher fees for programs than residents to compensate for property tax disparity.

Residents of Glen Ellyn who are not residents of the Glen Ellyn Park District or any other park district may receive all the privileges of belonging to the Glen Ellyn Park District by paying the equivalent of Park District taxes annually. This membership allows for priority registration, pool passes, and any other services provided to our residents at the resident rate.

WAIVERS OF LIABILITY

To participate in any Glen Ellyn Park District program, you must sign a waiver releasing the Park District of any liability.

REFUNDS, CANCELLATIONS

The Glen Ellyn Park District reserves the right to cancel, postpone or combine classes, or change instructors. If insufficient enrollment causes a class to be canceled, notification will be given 7 days in advance, and full tuition refunded. Withdrawals prior to the start of a class will be assessed at minimum a \$5.00 service charge. Refunds for moving, injury/illness, or schedule changes will be pro-rated according to the date the request for a refund is made.

COMMITMENT TO QUALITY

To encourage first time participation as well as repeat participation, the Park District has a refund policy highlighted by a satisfaction guarantee. This special refund policy provides us with timely feedback about dissatisfaction regarding our services. We can then take prompt action to improve services. If you are not completely satisfied, tell us and we will either: invite you to repeat the class at no charge; allow you a credit that can be applied to another program; issue you a full refund.

Our guarantee is based on fulfilling our promise to deliver the published expectations describing the service you have used. A refund will be granted if you were dissatisfied with the experience due to circumstances under the Park District's control.

Requests for the above-mentioned options must be made before the midpoint of the program or within two weeks of a single meeting activity. All refund requests must be submitted in writing and returned to the Spring Avenue Recreation Center or the Main Street Recreation Center. Satisfaction Guarantee does not apply to trips, special events with prepaid admissions and tickets, and athletic programs where equipment has already been ordered.

FINANCIAL ASSISTANCE

The Glen Ellyn Park District recognizes there are community residents who may suffer economic setbacks that might preclude their participation in Glen Ellyn Park District programs. Financial assistance forms are available at the Spring Avenue and Main Street Recreation Center. All requests remain confidential. If you have questions, please call (630) 858-2462 or email scholarships@gepark.org.

A referral for additional scholarship assistance is also available to qualified resident children under the age of 18 through the Milton Township Youth Committee's Family Youth Scholarship Fund.

INSURANCE

The Glen Ellyn Park District does not provide medical insurance coverage for individuals who participate in our programs or use our facilities. To do so would make programs and user fees cost prohibitive.

AMERICANS WITH DISABILITIES ACT

The Americans with Disabilities Act (ADA) prohibits discrimination on the basis of a disability. The Glen Ellyn Park District will make reasonable accommodations in recreation programs to enable participation by an individual with a disability that meets essential eligibility requirements for that leisure program and facility.

If you have questions or believe you have been unfairly discriminated against by the Park District, please contact Nick Cinquegrani at (630) 942-7257. Those who use the Telecommunications Device for the deaf may reach the Park District by calling the Illinois Relay Line at (800) 526-0844.

NON-DISCRIMINATION STATEMENT

The Glen Ellyn Park District prohibits discrimination in all its programs and activities on the basis of race, color, national origin, gender, religion, age, disability, political beliefs, sexual orientation, marital or family status.

BEHAVIOR POLICY

Participants are always expected to exhibit appropriate behavior. The following guidelines have been developed to help make Park District programs safe and enjoyable for all participants. Additional rules may be developed for specific programs and athletic leagues as deemed necessary by staff. Participants shall:

1. Show respect to all participants and staff, take direction from staff.
2. Refrain from using abusive or foul language.
3. Refrain from causing bodily harm to self, other participants or staff.
4. Show respect for equipment, supplies and facilities.

A positive approach will be used regarding discipline. Staff will periodically review rules with participants during the program session. If inappropriate behavior occurs, prompt resolution will be sought specific to each individual situation. The Park District reserves the right to dismiss a participant whose behavior endangers the safety of themselves or others.

ADULT'S CODE OF ETHICS

- I will encourage good sportsmanship by demonstrating positive support for players, coaches, and officials at every game and practice.
- I will place the emotional and physical well-being of my child ahead of my personal desire to win.
- I will insist that my child play in a safe and healthy environment.
- I will require that my child's coach be trained in the responsibilities of being a youth sports coach.
- I will remember that the game is for youth – not adults.
- I will do my very best to make youth sports fun for my child.
- I will ask my child to treat other players, coaches, and officials with respect regardless of race, gender, creed, or ability.
- I agree with these rules and understand that the Glen Ellyn Park District Associations have adopted a Zero-Tolerance Policy and that not abiding by these rules may restrict me from attending future games and practices.

PETS AT EVENTS

The Glen Ellyn Park District asks that everyone please exercise good judgment and leave pets at home when attending events that draw large crowds. Please show respect for other people, yourself and your pet by helping the Park District maintain a safe and healthy environment where all people have the opportunity to participate and enjoy themselves.

NOTICE OF POSSIBLE CHANGES IN PLAYBOOK LISTINGS

The policies, procedures, requirements, programs, fees and facility availability contained in this Playbook represent Park District program and policies at the time of publication. Sometimes changes in the programs (including fees, locations, times, etc.) and policies are necessary after Playbook publication but prior to program commencement or facility operation.

To provide the best services, programs and facilities to the public, the Park District reserves the right to add, to change, modify or delete any program or policies after they have been published. The Park District will attempt to make a reasonable effort to give prompt public notice of any material changes in the programs and policies, but notice cannot be assured. We apologize for any inconvenience this may cause and appreciate your understanding and cooperation.

PHOTO/VIDEO POLICY

The Glen Ellyn Park District uses pictures or videos of participants to publicize recreation opportunities in our social media, print, and online marketing. If you do not want a picture taken, please tell our photographer. If the picture has already been taken, please contact the Park District at (630) 942-7260.