



www.gepark.org



**GLEN ELLYN  
PARK DISTRICT**

Autumn 2021

# Playbook



## RESIDENT REGISTRATION:

Opens 9am Saturday, August 28

## Nonresident Registration:

Opens 9am Saturday, September 4

LAST UPDATED: 10/26/21



## Get Glowing!

Glow in the Park  
Lantern Walk returns  
September 12.

# We're Here to Help!

Staff initials follow the program description for which they are responsible.

BT	Brad Thomas	<a href="mailto:bthomas@gepark.org">bthomas@gepark.org</a>
CB	Clint Babicz	<a href="mailto:cbabicz@gepark.org">cbabicz@gepark.org</a>
CH	Christine Hartnett	<a href="mailto:chartnett@gepark.org">chartnett@gepark.org</a>
CS	Chad Shingler	<a href="mailto:cshingler@gepark.org">cshingler@gepark.org</a>
JR	Jeannie Robinson	<a href="mailto:jrobinson@gepark.org">jrobinson@gepark.org</a>
RF	Renae Frigo	<a href="mailto:rfrigo@gepark.org">rfrigo@gepark.org</a>
SL	Stacey Lim	<a href="mailto:slim@gepark.org">slim@gepark.org</a>

- Website ..... [gepark.org](http://gepark.org)
- Registration/General Questions ..... (630) 858-2462
- Refund Requests ..... [gepark.org/refund](http://gepark.org/refund)
- Ackerman SFC Questions ..... (630) 317-0130
- Closure/Cancellation Hotline ..... [gepark.org/hotline](http://gepark.org/hotline)

# Our Mission

To foster diverse, community-based leisure opportunities, through a harmonious blend of quality recreation programs, facilities, and open space which will enhance the quality of life into the future.

# How to Register

## Online Registration

Log onto [www.gepark.org/register](http://www.gepark.org/register) to sign up for almost any class, program or event. If you are a new user you must create a new account prior to registering online by clicking "Create an Account" and following the on-screen prompts.

## In Person & Drop Off Registration

Available at the Spring Avenue and Main Street Recreation Centers. For assistance by phone, please call (630) 858-2462.

**Monday-Thursday:** 8:30am-8:00pm

**Friday:** 8:30am-5:00pm

**Saturday:** 9:00am-12:00pm

**Sunday:** Closed

*The Spring Avenue Recreation Center registration office will be closed September 6, November 25-26, December 23-25, December 30-31, and January 1. The Main Street Recreation Center registration office will be closed September 6, November 25-26, and December 20-January 1.*

## Mail/Fax Registration

**Mail:** Glen Ellyn Park District, Registration, 185 Spring Avenue, Glen Ellyn, 60137

**Fax:** (630) 389-8527



# BOARD of COMMISSIONERS

For the Board meeting schedule, visit: [gepark.org/board-meetings](http://gepark.org/board-meetings)



Alex Durham  
President



Julia Nephew  
Vice President



Kathy Cornell  
Treasurer



Paul Bischoff Jr.



Ben Stortz



Michael Ward



Rob Weber

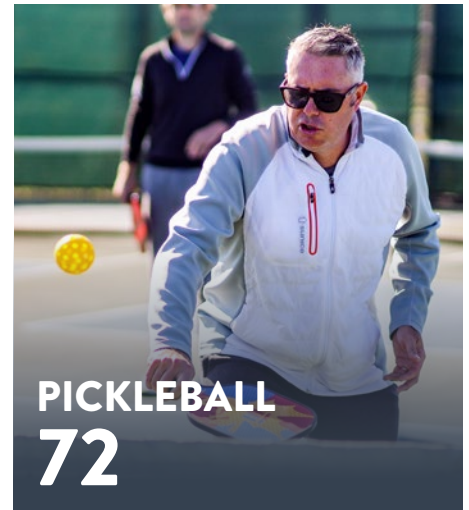
# TABLE of CONTENTS



**EVENTS**  
**5**

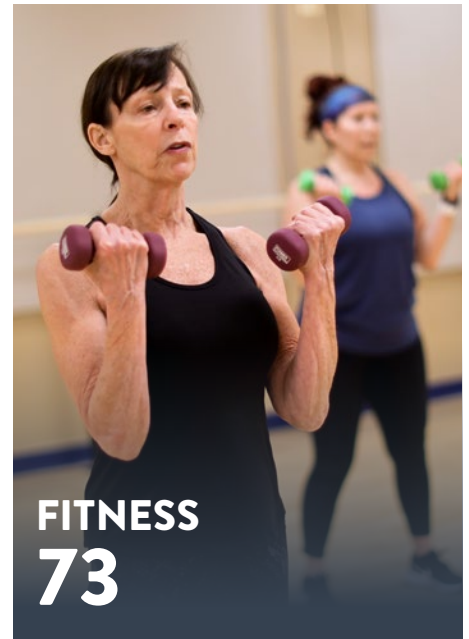


**FALL FETE**  
**14**



**PICKLEBALL**  
**72**

Adult & Senior Interest .....	<b>34-40</b>	Platform Tennis.....	<b>69-71</b>
Adventure Time .....	<b>33</b>	Policies.....	<b>84</b>
Dance.....	<b>46-48</b>	Preschool .....	<b>18-20</b>
Early Childhood Interest.....	<b>21-24</b>	Program Supervisors.....	<b>2</b>
Events .....	<b>5-16</b>	Registration .....	<b>2</b>
Fitness.....	<b>73-76</b>	Rentals.....	<b>78-79</b>
Gymnastics .....	<b>62-64</b>	Scholarship Program .....	<b>80</b>
Holes & Knolls Mini Golf.....	<b>17</b>	Sports.....	<b>49-61</b>
Ice Skating & Hockey.....	<b>65</b>	Spring Avenue Dog Park .....	<b>42</b>
Martial Arts.....	<b>67-68</b>	Trips.....	<b>41-42</b>
Nature.....	<b>43-45</b>	Youth & Teen Interest.....	<b>25-32</b>
Park Information .....	<b>81-82</b>	WDSRA .....	<b>83</b>
Pickleball .....	<b>72</b>		



**FITNESS**  
**73**

**LOOK FOR THE WINTER 2022**  
**PLAYBOOK ONLINE** *November 30th*

To provide you with the most accurate program information, Playbooks are digital only and can be read online at: [gepark.org/playbook](http://gepark.org/playbook)



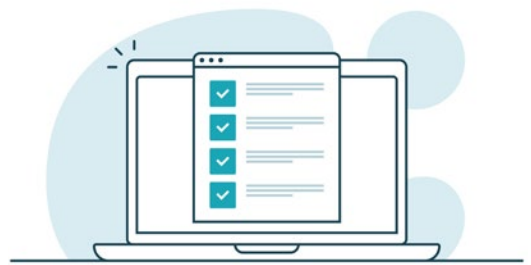
GLEN ELLYN PARK DISTRICT

# Community Survey

**Help us improve your experience with the Glen Ellyn Park District by taking a quick survey this September!**

The Glen Ellyn Park District will be conducting a community wide survey for all residents. The survey will be sent randomly to select households in mid-September. If you receive the survey via mail, we encourage you to take a few minutes to complete the survey to help identify opportunities to add to or improve facilities, parks, events, and programs. For those that do not receive a copy via mail, a link to complete the survey will be made available on our website.

Your feedback is invaluable to the District, and we appreciate your attention to this very important project for the community.



*We want to hear from you!*

**Look for the survey in mid-September.**



GET READY FOR **FUN** THIS FALL

# SPECIAL EVENTS

Events subject to change in accordance with the Restore Illinois Plan.

# SPECIAL EVENTS



## Glow in the Park Lantern Walk

Sunday, Sept. 12, 5-8pm  
Held at Lake Ellyn Park

The Glen Ellyn Park District and Charlie's Corner Foundation are partnering to offer this exciting evening of family activities benefiting Lurie Children's. Start the evening enjoying face painting, a balloon artist, live music, and much more! At 7:15pm, watch or march in the illuminated paper lantern walk around the lake. Decorate a lantern for the walk on site, or bring your own ready to go! Food will also be available for purchase.

There is a \$10 fee per lantern to decorate a lantern on-site (while supplies last; cash only). Lantern kits are also available for advanced purchase at the Spring Avenue Recreation Center. (jr)

### Schedule of Events

5pm-7:30pm: Activities, food, and entertainment  
7:15pm-8pm: Lantern Walk

Glow in the Park is free to attend, but cash donations to Lurie Children's are encouraged.

## Storytimes in the Parks

Tuesdays & Thursday  
in September, 10:30-11am

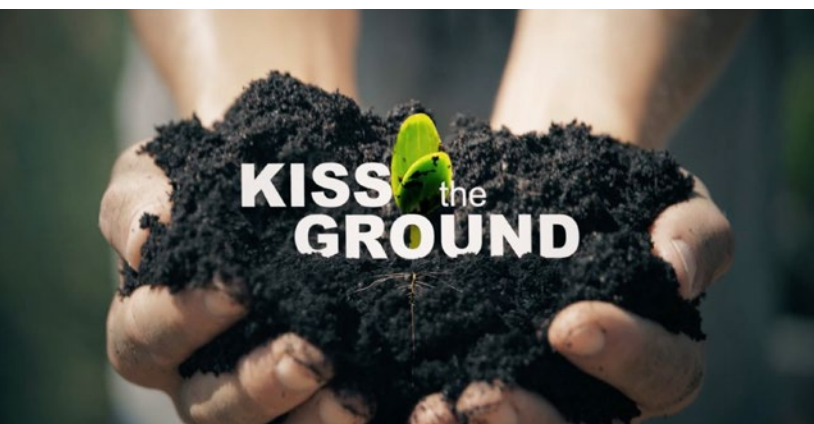
Come out to your favorite neighborhood parks for songs, rhymes, and stories. Don't forget to bring a blanket and bug spray! This program is designed for children and their grownups. Please plan to attend and be engaged with your child for this program. Drop offs are not allowed. For more information, please contact the Glen Ellyn Public Library.

**Tuesdays at Lake Ellyn Park**  
September 7, 14, 21, & 28

**Thursdays at Danby Park**  
September 9, 16, 23, & 30

GLEN ELLYN  
PUBLIC  
LIBRARY

# SPECIAL EVENTS



## Eco-Movie in the Park & Sustainability Fair

### Movie: Kiss the Ground

A documentary featuring science experts and celebrity activists that unpack the ways in which the earth's soil may be the key to combating climate change and preserving the planet.

September 14, 6:30-8:30pm

Held at Lake Ellyn Park

Rain Date: September 28

Soil is the foundation of food, fuel, and life! A shortened 45-minute version of the 2020 documentary Kiss the Ground will be shown outdoors in the park, followed by a short panel discussion with local soil and garden experts. Before the film, visit with local organizations that work to improve soil, grow food, encourage composting, support local farmers, and combat food security issues. Bring along canned goods to support the Fuel Pantry.

Participating Groups: College of DuPage, Sustain DuPage, Chicago Region Trees Initiative, Glen Ellyn Environmental Commission, Prairie Food Co-Op, The GardenWorks Project, and The Resiliency Institute. (rf)

### Schedule of Events

6:30-7:30pm: Sustainability Fair

7:30-8:15pm: Screening of Kiss the Ground

8:15-8:30pm: Panel and Audience Discussion

Free and open to the public

## Ser bilingüe ROCKS! Being Bilingual Rocks!

Saturday, Sept. 18, 2-2:45pm

Held at Maryknoll Park

GLEN ELLYN  
PUBLIC  
LIBRARY

¡Alina Celeste y Mi Amigo Hamlet quieren que sepan que ser bilingüe ROCKS! Únanse a ellos para un programa

interactivo que incorpora canciones originales y folclóricas en español e inglés, con música que abarca géneros como Rumba Flamenco, Bluegrass, Bossa Nova y otros ritmos caribeños, latinoamericanos y norteamericanos. ¡Prepáranse para bailar, cantar y rockear, estilo bilingüe!

Alina Celeste and Mi Amigo Hamlet incorporate original and folk tunes in Spanish and English, with Rumba Flamenco, Bluegrass, Bossa Nova and other Caribbean, Latin American and North American Beats in this interactive show. Be prepared to dance, sing and ROCK OUT, bilingual style. For all ages. (jr)

Free but registration required »

AUTUMN 2021 • 7

● Registration open now ● Registration opens at 9am August 28

# SPECIAL EVENTS



## “Touch”-a-Truck

Saturday, Sept. 25, 10am-Noon  
Held at Maryknoll Park

This is your child’s chance to see their favorite big trucks and things on wheels, interact with the drivers, and take pictures. There will also be raffles and themed giveaways while supplies last. For all ages.

### Parking & Shuttle

Limited parking is available within Maryknoll Park. Overflow parking and a complimentary shuttle will be available. Please check our website in September for more details. (jr)

Free and open to the public

## Thirsty Thursday on the Deck

Thursday, Oct. 7, 6:30-9pm  
Held at Lake Ellyn Boathouse

Grab a group of friends and head down to Lake Ellyn for a relaxing evening on the Boathouse patio and deck. Craft beer and wine will be for sale by Glen Ellyn’s own, The Beer Cellar. Enjoy a beverage, mix and mingle, and we’ll provide the live entertainment and light snacks to cap-off a perfect night. Pre-registration available online; registration fee includes your first drink ticket. Tickets at the door will be cash only, if available. (jr)

Ages: 21 and up  
Registration Fee: \$15  
Code: [123847](#) •

*Advance registration recommended.*

## Ackerman Spook Trail

Oct. 21 & 22  
Held at Ackerman Park

Take a walk along the spook trail through Ackerman Woods and enjoy Halloween-themed games. Refreshments will be available for purchase from local vendors. The trail will be less scary from 4pm-6pm and will be geared for older children from 6pm-8pm on Thursday and 6pm-9pm on Friday. The spook trail will be running continuously through the evening. Min/Max: 20/400. (sl)

**Date: Thursday, October 21**

Time: 4pm-8pm  
Ages: 5 and up  
Registration Fee: \$5  
Code: [123908](#) •

**Date: Friday, October 22**

Time: 4pm-9pm  
Ages: 5 and up  
Registration Fee: \$5  
Code: [123839](#) •

AUTUMN 2021 • 8

• Registration open now • Registration opens at 9am August 28



# SPECIAL EVENTS



## Boo Bash

Saturday, Oct. 23, 10-11:30am

Held at Maryknoll Park

Dress in costume and join us for a spooky good time. Enjoy a Trick-or-Treat trail with your favorite characters, listen to stories read by the Glen Ellyn Public Library, and enjoy apple cider and Halloween treats. Little Miss Ann will also be there to get you moving and grooving. (jr)

Ages: 2-8 with adult

R/NR Registration Fee: \$15/\$23

Code: [123726](#) •

## Pumpkins on Main

On display October 29-31 at Main Street Recreation Center

Call for jack-o-lanterns! Submit a pumpkin to be part of our community jack-o-lantern display over Halloween weekend...and for a chance to win prizes! Carve a pumpkin at home and drop it off at Main Street Recreation Center between 10am-3pm Friday, October 29, or join us for our Pumpkin Carving Night on October 28.

Pumpkins will be exhibited as part of our spooktacular display for everyone to enjoy outside Main Street Recreation Center from October 29-31.

If you would like to take your pumpkin home after Halloween, pumpkins can be picked up beginning at 10am Monday, November 1.

### SUBMIT A PUMPKIN

Carving pumpkins at home to submit for the display? Each family member submitting a pumpkin must register. The deadline to register is October 27.

Registration Fee: Free

Code: [123929](#) •

### PUMPKIN CARVING NIGHT

Join us for pumpkin carving fun at Main Street Recreation Center. We will supply the pumpkins and necessary tools. All pumpkins will be included as part of our Pumpkins on Main display.

Ages: All

Date: Thursday, October 28

Time: 6pm-8pm

Fee: Free

Code: [123846](#) •

AUTUMN 2021 • 9

• Registration open now • • Registration opens at 9am August 28

# SPECIAL EVENTS



## Prom with Mom

Friday, Nov. 5, 6:30-8:30pm  
Held at Abbington Banquets

Come have a special night with your favorite little guy. Dress to impress and dance the night away to music played by the DJ. A complimentary photo booth and an ice cream sundae bar are also included. If a mom cannot attend, another family member is welcome. Guidelines related to COVID-19 will be emailed to registered participants closer to the event date.  
Min/Max: 200/400. (jr)

**Each adult and child must register individually.**

Ages: 3-10 and adult  
R/NR Registration Fee: \$30/\$35  
Code: [123727](#) •



## Pumpkin Smash

Saturday, Nov. 6, 9-11am  
Held at Village Green Park

Do not trash your pumpkins, smash them! Drop off jack-o-lanterns for composting at Village Green Park. Drop and go or take the opportunity to smash and chop your pumpkin – it will add nutrients to our community garden soil while keeping pumpkins out of the landfill. Please no painted pumpkins and all decorations and candles must be removed. If you stay to smash – please bring a baseball bat and shovel! For all ages. (rf)

Free and open to the public



## Turkey Trot 5-Mile Run

Thursday, Nov. 25, 8am start  
Held at Lake Ellyn Park/Boathouse

Start your Thanksgiving at the Turkey Trot Predicto Race. You don't have to cross the finish line first to win! The top two runners who most accurately predict their finish time will win a Thanksgiving treat. Prizes will also be awarded for Best Costume. Registration is not required, but a waiver must be signed prior to the event to qualify. No timing devices allowed on the course. For all ages.

Help support the Glen Ellyn Food Pantry by bringing non-perishable food items to the race. The Park District will collect donations and deliver them to the food pantry. (sl)

Free and open to the public

AUTUMN 2021 • 10

• Registration open now • Registration opens at 9am August 28

# SPECIAL EVENTS



## Donuts with Santa

Saturday, Dec. 4

Held at Lake Ellyn Boathouse

Don't miss this chance to visit with Santa while enjoying some delicious treats and hot chocolate. There will also be table activities, songs, and each child will receive a gift from Santa as a remembrance of this special day. All adults and any children 1 year and older must register in advance. Children must be registered with an adult. Min/Max: 50/70. For all ages. (ts)

Child R/NR Registration Fee: \$18/\$27

Adult R/NR Registration Fee: \$10/\$15

**Time: 8am-9am**

Code: [123728](#) •

**Time: 9:30am-10:30am**

Code: [123729](#) •

**Time: 11am-Noon**

Code: [123730](#) •

## Polar Express™ Pajama Party with Santa

Saturday, Dec. 11, 6-8:30pm

Held at Ackerman SFC

Enjoy the holiday season's favorite movie, The Polar Express, on the big screen. Wear your jammies for a fantastical time of wonder and magic as we use our imaginations and journey to the North Pole!

We'll have hot cocoa and cookies, kids get a take-and-make a holiday-themed project, and we'll have a surprise visit from the BIG GUY!

Families should bring a blanket or lawn chair for the movie. Time will be allotted for photos with Santa after the movie and The Conductor will be available before the movie. Min/Max: 50/200. (jr)

**Only adults and children over the age of 2 must register.**

Child R/NR Registration Fee: \$25/\$38

Adult R/NR Registration Fee: \$5/\$8

Code: [123958](#) •

AUTUMN 2021 • II

• Registration open now • Registration opens at 9am August 28



# SPECIAL EVENTS



## Candy Cane Hunt

Friday, Dec. 17

Held at Main Street Rec. Center

Search for hundreds of hidden candy canes, create a candy-cane-inspired craft project, and enjoy a story time before we head outdoors for the hunt. In case of inclement weather, the hunt will be inside at the recreation center. In addition to the regular candy canes, there will be special candy canes that will lead to an extra special treat. Make sure to dress appropriately for the weather.

Only children must register.

Min/Max: 20/40. (jr)

Ages: 2-8 with adult

R/NR Registration Fee: \$10/\$15

**Time: 1pm-2pm**

Code: [123731](#) ●

**Time: 2:15pm-3:15pm**

Code: [123732](#) ●



## Santa on the Stoop

Saturday, Dec. 18 or Sunday, Dec. 19

At your home between 1-4:30pm

Tell Santa what you want for Christmas from your front porch when he visits you in person! He can't get too close, but he still wants to say, "Hello!" and drop off a special gift. Due to his busy schedule, he will stay for about 5-10 minutes in front of each house - long enough to hear your request and wave from the walkway. Santa will knock on your door or ring the bell when he arrives, so be ready! Please make sure you are available between the hours of **1pm to 4:30pm**, as we are not able to accommodate special requests. (jr)

**Open to Glen Ellyn Park District resident addresses only. Max: 80 homes.**

Ages: 2-12

1st Child Registration Fee: \$25

Each Additional Child Fee: \$12

**Date: Saturday, December 18**

Code: [123848](#) ●

**Date: Sunday, December 19**

Code: [123849](#) ●



## You've Been Grinched

Deliveries will take place between December 20-23

Grinch your family, friends, and neighbors with a surprise at-home candy cane display! The Grinch himself will scatter two dozen candy canes the front yard and leave a fun "You've Been Grinched" sign on the door.

Grinching will happen December 20-December 23 between the hours of 4:00pm-6:00pm.

Additional candy canes can be purchased. Every member in your household account can sign up to Grinch someone. (jr)

**Open to Glen Ellyn Park District resident addresses only.**

**Max: 75 homes.**

Fee per Grinch: \$15

Additional dozen candy canes: \$5  
Registration deadline: December 13

Code: [123959](#) ●

AUTUMN 2021 • 12

● Registration open now ● Registration opens at 9am August 28

# FITNESS EVENTS

## Ackerman SFC Open House

Saturday, Sept. 18, 11am-1pm  
Held at Ackerman SFC

Take part in a variety of fitness and youth classes, tour the facility, and learn about our personal training options. There will also be giveaways for attendees. Plus, anyone that signs up during the Open House will receive one month free on their membership. Free and open to the public.

## WERQ-A-Thon Uniting Against Breast Cancer

Sunday, Oct. 10, 11am-1pm  
Held at Ackerman SFC

WERQ for a good cause! Join Ackerman SFC's WERQ instructors for two hours of cardio dance fun in support of The Breast Cancer Research Foundation. There will be snacks, water, and giveaways at the event. Registered participants receive a WERQ-A-Thon t-shirt. Must be an Ackerman SFC member to receive the \$15 fee. Additional donations will be accepted at the event.

Ages: All  
Member/Nonmember Fee: \$15/\$20  
Registration Code: [123907](#) •

## Turkey Burn Get Fit. Give Back.

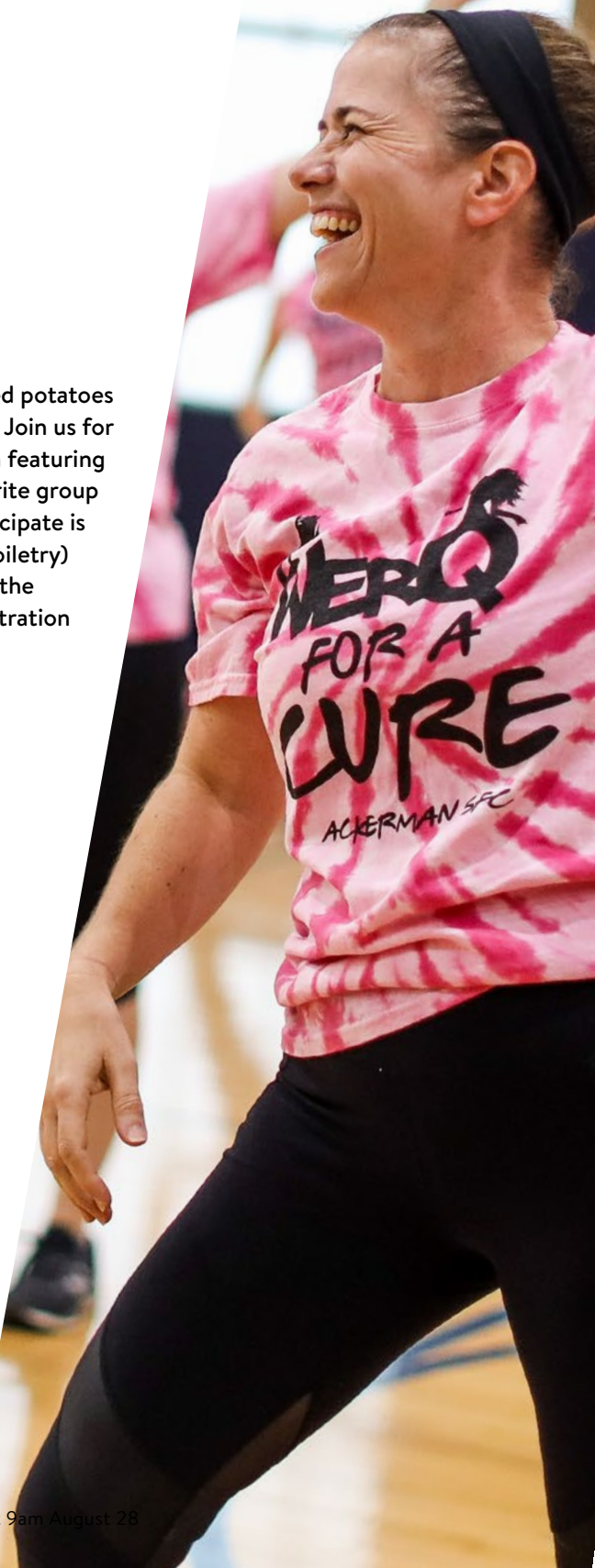
Thursday, Nov. 25, 7-10am  
Held at Ackerman SFC

Earn that extra helping of mashed potatoes and help feed the less fortunate! Join us for a morning of calorie-burning fun featuring a selection of some of your favorite group fitness classes. The "fee" to participate is a non-perishable food item (or toiletry) donation. Donations will benefit the Glen Ellyn Food Pantry. No registration required. For ages 14+.

## New Year's Day Burn Let's Move for Hunger

Saturday, Jan. 1, 8-11am  
Held at Ackerman SFC

Jumpstart your resolution and help make hunger history. Head to Ackerman SFC for a morning of calorie-burning group fitness classes. The "fee" to participate is a non-perishable food item (or toiletry) donation. Donations will benefit the Glen Ellyn Food Pantry. No registration required. For ages 14+.



# Fall Fête

WHISKEY, WINE  
and WHIMSY

*An event benefiting the  
Friends of Glen Ellyn Parks*



After careful consideration, the Friends of Glen Ellyn Parks has decided to postpone Fall Fête 2021. With the mask mandate in effect for the foreseeable future, we feel strongly that such an event will be more prudent and enjoyable once the mandate is lifted.

**Please save the date for Saturday, April 30, 2022**

While disappointed to postpone the in-person Fall Fête event on November 6th, there are still many ways in which one can remain involved with our efforts this year and still contribute to the Scholarship Fund!

- On November 6 at 8:45 p.m. the 50/50, Wine, Whiskey, and Whimsy Raffles will close and winners will be announced and contacted shortly thereafter.
- There are multiple Sign-Up Parties in the works, including a Platform Tennis Mixed Tournament on October 24 and a Naperville Trolley Holiday Lights Tour on December 14.

If you are a current ticket holder and have not yet done so, please communicate with the Fête team at [fetedirector@gepark.org](mailto:fetedirector@gepark.org) or by calling (312) 909-2395.

**Sponsored by:**

**GLEN ELLYN  
BANK & TRUST**  
AWINTRUST COMMUNITY BANK

**JRH**  
PROPERTIES

PARK & OAK  
INTERIOR DESIGN



**dupage** John and Karen Evans  
credit union



KIWANIS CLUBS OF GLEN ELLYN & CENTRAL DUPAGE

# FISH RELEASE

**Saturday, October 16**

Children of all ages are invited to help release fish into Lake Foxcroft or Lake Ellyn during the Kiwanis Fish Release! Participants are given a bucket of fish which they carry to the water's edge and release. This continues until all fish reach their new water home!

**Lake Foxcroft: Approx. 12:15pm**

**Lake Ellyn: Approx. 12:45pm**



## Christmas Sweater SHUFFLE

**December 12, 2021**

Register by December 5 at:  
[www.ChristmasSweaterShuffle.com](http://www.ChristmasSweaterShuffle.com)



# GLEN ELLYN Gives

## Blood Drives & Food Drives

We're hosting monthly blood drives and drive-thru drop-off food drives at Ackerman SFC! Appointments are recommended for the blood drives but walkups are welcome. To donate nonperishable food items and toiletries to help fill the shelves at Glen Ellyn Food Pantry, just pull up to the main entrance and we'll do the rest.

Upcoming Blood Drive and Food Drive Dates	Donation Window	Make a Blood Donation Appointment Today!
Tuesday, September 21	9:30 a.m. to 3:30 p.m.	<a href="#">Schedule »</a>
Thursday, October 21	9:30 a.m. to 3:30 p.m.	<a href="#">Schedule »</a>
Tuesday, November 23	9:30 a.m. to 3:30 p.m.	<a href="#">Schedule »</a>
Wednesday, December 22 <i>Blood Drive Only</i>	9:30 a.m. to 3:30 p.m.	<a href="#">Schedule »</a>

*The blood drives are offered in partnership with State Representative Terra Costa Howard and Kiwanis Club of Glen Ellyn.*





# holes & knolls

MINI GOLF

845 Pershing Avenue  
Phone: (630) 469-7888

Holes & Knolls Mini Golf welcomes putt-putters of all ages onto its two 18-hole mini golf courses. The 2021 season ends on October 24.

## Miniature Golf Fees

- Ages 3-13 .....\$6 for 36 holes
- Ages 14 & Up.....\$7 for 36 holes
- Seniors and Military (with ID) .....\$6 for 36 holes

## Hours of Operation

Mini golf is play and go. In case of cold weather or inclement weather, please check [gepark.org/hotline](http://gepark.org/hotline) for delayed openings or closures. Last round of golf goes out 45 minutes before closing time listed.

[VIEW HOURS OF OPERATION »](#)



## Participation Guidelines During Phase 5

Face coverings are optional if you are fully vaccinated. Face coverings must be worn by unvaccinated individuals ages 2 and up when in the Clubhouse and when social distancing cannot be maintained on the course.



# Preschool

## 2021-2022 School Year

### Our Philosophy & Curriculum

At our Preschool, children learn through an academic and play-based curriculum to facilitate learning concepts including writing, science, vocabulary, numbers, shapes, math, and other cognitive abilities. The academics incorporated into the program will ensure students are prepared to move to the next level and eventually be Kindergarten-ready.

Our program is a mixture of teacher-guided activities and playtime, with small and large group activities based around a weekly theme. Children engage in fine and large motor skill activities, art projects, music, books, dramatic play, cooking, writing and more. Children also have monthly visits from B#Sharp Music for Children and the Park District Naturalist.

**COVID-19 PROTOCOLS:** Please visit [gepark.org/coronavirus](http://gepark.org/coronavirus) to view safety protocols and participation guidelines.

### Contact

Jeannie Robinson, (630) 942-7267  
[jrobinson@gepark.org](mailto:jrobinson@gepark.org)

**2-Year-Olds** Age 2 as of 6/15/21  
Geared toward having a successful first school-away-from-parent experience while preparing for the three-year-old program. Emphasis is placed on socialization skills and introduction to a structured class.

**3-Year-Olds** Age 3 as of 9/1/21  
Geared toward having a successful first school experience. Emphasis is placed on social skills, fine motor skills, shapes, colors, name recognition, following direction, sharing and play. Must be able to use the restroom independently.

**4-Year-Olds** Age 4 as of 9/1/21  
Designed for developing kindergarten readiness. Emphasis is placed on the development of academics through structured activities, introducing math, lower/upper case letters, letter sound recognition, writing/site words, and developing independence. Must be able to use the restroom independently.

**5-Year-Olds**  
**Must turn 5 between 9/1/21-1/1/22**  
Designed for developing kindergarten readiness. Emphasis is placed on the development of academics through structured activities, simple math, lower/upper case letters, letter sound recognition, writing/site words, punctuation, capitalization, problem solving and developing independence.

### Registration

**Open registration is now in progress.**  
Registration will be for the complete school year and must be done in person at either the Spring Avenue or Main Street Recreation Centers. Parents must submit a copy of their child's birth certificate at the time of their registration.

### Schedule

The 2021-2022 preschool year begins the week of September 7, 2021 and concludes the week of May 13, 2022. Classes will not meet on legal public holidays as determined by the District 41 school calendar. There may be additional dates, which will be stated in your Glen Ellyn Park District Preschool Calendar.

### Payment

Preschool uses automatic billing/ payments. A separate nonrefundable deposit of \$75 will be required upon registration. The yearly class fee is divided into six equal amounts charged to your credit card or e-check each month May-October. You may also pay for the entire year at registration.

Please note, the fees below do not include the separate nonrefundable \$75 deposit.  
 Status listed is as of 8/24/2021. Visit [gepark.org/preschool](http://gepark.org/preschool) for class status updates or email [jrobinson@gepark.org](mailto:jrobinson@gepark.org)

Age as of 6/15/21	Location	Days/Dates	Time	R/NR Annual or Installment Fees	Status
<i>In case of potty accidents, parents will be notified.</i>					
2	Spring Avenue (Multi B)	Fridays, Sept. 10-May 13	9am-11am	\$594/\$891 annually or \$99/\$148.50 six installments	Waiting List ●
Age as of 3/15/21	Location	Days/Dates	Time	R/NR Annual or Installment Fees	Status
<i>In case of potty accidents, parents will be notified.</i>					
2	Spring Avenue (Multi B)	M/W, Sept. 8-May 11	9am-11am	\$1,188/\$1,782 annually or \$198/\$297 six installments	Waiting List ●
2	Spring Avenue (Multi B)	Tu/Th, Sept. 9-May 12	9am-11am	\$1,188/\$1,782 annually or \$198/\$297 six installments	Waiting List ●
2	Spring Avenue (Multi B)	Tu/Th, Sept. 9-May 12	11:30am-1:30pm	\$1,188/\$1,782 annually or \$198/\$297 six installments	5 spots ●
Age as of 9/1/21	Location	Days/Dates	Time	R/NR Annual or Installment Fees	Status
<i>Must be potty-trained and able to use the restroom independently.</i>					
3	Main Street (Room 106)	Tu/Th, Sept. 7-May 12	8:45am-11:15am	\$1,320/\$1,980 annually or \$220/\$330 six installments	Waiting List ●
3	Main Street (Room 106)	M/W/F, Sept. 8-May 13	8:45am-11:15am	\$1,980/\$2,970 annually or \$330/\$495 six installments	Waiting List ●
3	Main Street (Room 204)	Tu/Th, Sept. 7-May 12	8:45am-11:15am	\$1,320/\$1,980 annually or \$220/\$330 six installments	1 spot ●
3	Main Street (Room 204)	M/W/F, Sept. 8-May 13	8:45am-11:15am	\$1,980/\$2,970 annually or \$330/\$495 six installments	Waiting List ●
3	Spring Avenue (Preschool)	Tu/Th, Sept. 7-May 12	8:45am-11:15am	\$1,320/\$1,980 annually or \$220/\$330 six installments	6 spots ●
Age as of 9/1/21	Location	Days/Dates	Time	R/NR Annual or Installment Fees	Status
<i>Must be potty-trained and able to use the restroom independently.</i>					
4	Main Street (Room 114)	M-Th, Sept. 7-May 12	8:45am-11:15am	\$2,772/\$4,158 annually or \$462/\$693 six installments	Waiting List ●
4	Main Street (Room 204)	M-Th, Sept. 7-May 12	12:15pm-2:45pm	\$2,772/\$4,158 annually or \$462/\$693 six installments	Waiting List ●
4	Spring Avenue (Preschool)	M/W/F, Sept. 8-May 13	8:45am-11:15am	\$2,079/\$3,118.50 annually or \$346.50/\$519.75 six installments	4 spots ●
4	Spring Avenue (Preschool)	M-Th, Sept. 7-May 12	12:15pm-2:45pm	\$2,772/\$4,158 annually or \$462/\$693 six installments	7 spots ●
Must turn 5 between 9/1/21-1/1/22	Location	Days/Dates	Time	R/NR Annual or Installment Fees	Status
5	Main Street (Room 106)	M-F, Sept. 7-May 13	12:15pm-2:45pm	\$3,630/\$5,445 annually or \$605/\$907.50 six installments	3 spots ●

AUTUMN 2021 • 19

● Registration open now ● Registration opens at 9am August 28



## Preschool Playtime

### AFTER SCHOOL PROGRAM

Ages: 3-4

This structured after school playtime program at Main Street Recreation Center (Room 114) includes free play, crafts, games, and gym time for your little one to further explore school.

Register from one to four days per week for the full school year. Billing is on a monthly basis, beginning September 1st. Space is limited per day. Please choose your day(s) upon registration. Registration forms are available at Main Street Recreation Center and Spring Avenue Recreation Center, or by emailing [jrobinson@gepark.org](mailto:jrobinson@gepark.org). Min/Max: 8/12. (jr)

### Full School Year (32 Weeks)

R/NR-\$544/\$816

Day	Date	Time	Status
M	Sept. 13-May 9	11:45am-2:15pm	11 spots open ●
Tu	Sept. 14-May 10	11:45am-2:15pm	5 spots open ●
W	Sept. 15-May 11	11:45am-2:15pm	9 spots open ●
Th	Sept. 16-May 12	11:45am-2:15pm	7 spots open ●

## Kindergarten Enrichment

Ages: 5-6

Must be born by September 1, 2016 and enrolled in Kindergarten.

The Glen Ellyn Park District offers a quality enrichment experience for Kindergarten-age children attending half-day Kindergarten. This popular program, held at Main Street Recreation Center (Room 304), is designed to enrich and enhance the regular district Kindergarten program in the areas of motor skills, language arts, music, and creative arts. The goal is to allow each child to mature academically and socially in a creative, encouraging, and challenging learning environment.

Classes offer a balance of both structured and unstructured activities. Activity areas to choose from include blocks, quiet time, dramatic play, small and large motor activities as well as areas for music, art, literacy and science/discovery. Children must turn five by September 1, 2021, in order to register for this class. We will provide a space for kids to eat lunch after (AM) or prior (PM) to KE. Please send a sack lunch if you plan to have your child eat lunch at KE. Min/Max: 8/10. (jr)

R/NR-\$1,716/\$2,574 annually or \$286/\$429 six installments  
Plus a separate \$75 nonrefundable deposit. Status listed is as of 8/24/21.

Day	Date	Time	Status
Tu & Th	Sept. 7-May 12	8:45am-11:30am	2 spots open ●
Tu & Th	Sept. 7-May 12	12:30pm-3:15pm	Waiting List ●
M & W	Sept. 8-May 11	8:45am-11:30am	1 spot open ●
M & W	Sept. 8-May 11	12:30pm-3:15pm	2 spots open ●

AUTUMN 2021 • 20

● Registration open now ● Registration opens at 9am August 28

# Early Childhood Interest

## Who To Contact

**Chad Shingler (cs)**

[cshingler@gepark.org](mailto:cshingler@gepark.org)  
(630) 942-7264

**Renaë Frigo (rf)**

[rfrigo@gepark.org](mailto:rfrigo@gepark.org)  
(630) 858-6037 x 6006

**Christine Hartnett (ch)**

[chartnett@gepark.org](mailto:chartnett@gepark.org)  
(630) 942-7268

**Stacey Lim (sl)**

[slim@gepark.org](mailto:slim@gepark.org)  
(630) 942-7275

**Jeannie Robinson (jr)**

[jrobinson@gepark.org](mailto:jrobinson@gepark.org)  
(630) 942-7267

## Ackerman Parent/Tot Arts & Crafts

Ages: 3-5 with adult

Parents play an integral part in helping their tots develop and explore their creative side through art. Instructors will facilitate the class and parents will guide the child through arts and crafts projects which may include coloring, building, sculpting clay, painting, and other crafts. Location: Ackerman SFC. Min/Max: 5/25. (sl)

Code	Day	Date	Time	R/NR Fee	
<a href="#">123000</a>	Sa	9/11-9/25	11-11:45am	\$30/\$45	●
<a href="#">123001</a>	F	9/10-9/24	9-9:45am	\$30/\$45	●
<a href="#">123720</a>	Sa	10/9-10/30	11-11:45am	\$40/\$55	●

## SHINING STAR PRODUCTION

### Little Actors Club

Ages: 3-6

Children love this innovative drama class that develops their imagination and introduces them to the performing arts in a fun and creative atmosphere. Each week is an exciting adventure into the imagination with changing themes, music, games, jokes, terminology, and costume suggestions designed to enhance spontaneity, build self-esteem, and promote creativity. Social distancing guidelines will be followed, and masks are required. Location: Main Street Recreation Center. Min/Max: 5/10. No class 11/24. (cs)

Code	Day	Date	Time	R/NR Fee	
<a href="#">123745</a>	W	11/3-12/15	5:30-6:15pm	\$69/\$104	●

## SHINING STAR PRODUCTION

### Little Actors Club and the North Pole Elves

Ages: 4-7

If you were an elf at the North Pole, what would you do for fun? Join us for this one-hour special Little Actors Club where you'll use your imagination while pretending to be one of Santa's elves. We'll play North Pole games, make up elf-ish songs and dances, and have a Christmassy good time. Participants are welcome to attend in Christmas/Elfin attire or come as you are. Location: Main Street Recreation Center. Min/Max: 7/11. (cs)

Code	Day	Date	Time	R/NR Fee	
<a href="#">123746</a>	W	12/22	5-6pm	\$15/\$23	●



## T-REXPLORERS

### Dino Hour in the Park

Ages: 3-5 with adult

Bring your little one for an hour of dinosaur discovery fun! They will see and touch real dinosaur fossils, listen to a story, make a craft to take home, and dig in the sand to assemble dinosaur puzzle pieces. Location: Lake Ellyn Park. Min/Max: 6/10. (jr)

Registration closes one week prior to class start date

Code	Day	Date	Time	R/NR Fee	
<a href="#">123850</a>	Sa	9/25	10-11am	\$35/\$53	●
<a href="#">123852</a>	W	10/20	4:30-5:30pm	\$35/\$53	●

## Safe Kids

Ages: 3-5

This interactive class focuses on thinking safely and making safe choices in and around the home. Kids learn what to do in an emergency, when to call 911 and how to deal with strangers. Each child receives a safety packet to take home. Location: Spring Avenue Recreation Center. Min/Max: 6/10. (jr)

Registration closes one week prior to class start date

Code	Day	Date	Time	R/NR Fee	
<a href="#">123853</a>	Th	10/7	4:15-5:15pm	\$25/\$37	●
<a href="#">123855</a>	W	12/1	4:15-5:15pm	\$25/\$37	●

## Safe Kids with First Aid

Ages: 3-5

Safety and first aid go hand in hand! Children learn simple rules to think safely and make safe choices at home and away. We also present basic first aid information, including treatment of small cuts, bumps and bruises, nosebleeds, minor burns, and more. Each child receives a safety packet and creates a small first aid kit to take home. Location: Spring Avenue Recreation Center. Min/Max: 6/10. (jr)

Registration closes one week prior to class start date

Code	Day	Date	Time	R/NR Fee	
<a href="#">123854</a>	Th	10/7	5:30-6:30pm	\$25/\$37	●
<a href="#">123856</a>	W	12/1	5:30-6:30pm	\$25/\$37	●



## WEE HEART MUSIC

### Music Together Family Class

Ages: Birth to 5 years

Enjoy eight weeks of music, movement, learning, and growth as you sing, dance, and play musically together. Each semester introduces a new song collection. Tuition includes materials for at home listening and play. There is a \$50 discount for the second child. Location: Main Street Recreation Center. Min/Max: 5/12. (cs)

Code	Day	Date	Time	R/NR Fee
<a href="#">123015</a>	M	9/13-11/8	9:15-10am	\$190/\$285 ●
<a href="#">123016</a>	M	9/13-11/8	10:15-11am	\$190/\$285 ●
<a href="#">123017</a>	M	9/13-11/8	11:15am-12pm	\$190/\$285 ●
<a href="#">123018</a>	Th	9/16-11/11	9:15-10am	\$190/\$285 ●
<a href="#">123019</a>	Sa	9/18-11/13	9:15-10am	\$190/\$285 ●

## WEE HEART MUSIC

### December Sing-Along

Ages: Birth to 5 years

Sing, dance, drum, and jingle your way into the Holiday spirit with a three-week sing-along, fun for the whole family. Jingle Bells, Frosty the Snowman, and Rudolph the Red-Nosed Reindeer are sure to enliven your December as you celebrate the holiday with your children. There is a \$12 discount for siblings. Location: Main Street Recreation Center. Min/Max: 5/12. (cs)

Code	Day	Date	Time	R/NR Fee
<a href="#">123733</a>	M	11/29-12/13	9:15-10am	\$48/\$72 ●
<a href="#">123734</a>	M	11/29-12/13	10:15-11am	\$48/\$72 ●
<a href="#">123735</a>	M	11/29-12/13	11:15am-12pm	\$48/\$72 ●
<a href="#">123736</a>	Th	12/2-12/16	9:15-10am	\$48/\$72 ●
<a href="#">123737</a>	Th	12/2-12/16	10:15-11am	\$48/\$72 ●
<a href="#">123738</a>	Sa	12/4-12/18	9:15-10am	\$48/\$72 ●
<a href="#">123739</a>	Sa	12/4-12/18	10:15-11am	\$48/\$72 ●

## MUSICREATORS

### Songs of the Season

Ages: 3-5 with adult

This 40-minute class teaches musical concepts through songs, stories, movement, and instrumentation, all hands on and centered on the current season, outdoor fun, and concepts of nature. Activities will include singing, instrument playing, chants and rhymes, listening activities, group dancing, as well as, bringing literature and stories to life on xylophones and percussion instruments. The class is centered on the current season, outdoor fun, and concepts of nature. Location: Main Street Recreation Center. Min/Max: 5/10. No class 11/23. (cs)

Code	Day	Date	Time	R/NR Fee
<a href="#">123022</a>	Tu	9/14-10/19	11:15-11:55am	\$88/\$132 ●
<a href="#">123742</a>	Tu	10/26-12/7	11:15-11:55am	\$88/\$132 ●

## MUSICREATORS

### Dance & Sing with Me

Ages: 1-4

Each music class is filled with fun and developmentally appropriate activities that will stimulate your child's imagination and improve their increasing vocabulary. Singing songs, your child will gain independence, confidence, and learn self-expression. Using many percussion instruments, scarves, hoops, and stick ponies; you will move with your child enjoying music time together while improving their gross and fine motor coordination. Location: Main Street Recreation Center. Min/Max: 5/12. No class 11/23. (cs)

Code	Day	Date	Time	R/NR Fee
<a href="#">123020</a>	Tu	9/14-10/19	9:45-10:15am	\$76/\$114 ●
<a href="#">123021</a>	Tu	9/14-10/19	10:30-11am	\$76/\$114 ●
<a href="#">123740</a>	Tu	10/26-12/7	9:45-10:15am	\$76/\$114 ●
<a href="#">123741</a>	Tu	10/26-12/7	10:30-11am	\$76/\$114 ●



## MUSICREATORS Holiday Sing-Along

Ages: 1-5

Our festive sing-along will focus on Winter Wonderland and all the songs that capture the wonder of winter, the sounds of Christmas, and the excitement of Santa. This fun-for-all 40-minute music session is geared for the entire family, and is filled with singing, instruments such as shakers, tone bells, sticks, drums, and movement with hoops, scarfs, and reindeer to ride guaranteed to add to the spirit of the holidays. Location: Main Street Recreation Center. Min/Max: 5/13. (cs)

Code	Day	Date	Time	R/NR Fee	
<a href="#">123743</a>	Tu	12/14	9:45-10:25am	\$14/\$21	●
<a href="#">123744</a>	Tu	12/14	10:40-11:20am	\$14/\$21	●

## ROCK N' KIDS

### Tot & Kid Rock

Wiggle, giggle, dance, and sway. Tot Rock and Kid Rock are movement-based learning and imaginative play classes with music. All class procedures are designed to keep staff and students safe. Activities are age appropriate by class and will include songs and rhymes, rhythm and coordination, fine and gross motor, imagination and sensory, listening and following directions skills. With a focus on STEAM learning, each session will have a new educational theme. Location: Main Street Recreation Center. Min/Max: 5/10. No class 11/26. (cs)

Code	Day	Date	Time	R/NR Fee	
<b>Tot Rock: 12-23 months with adult</b>					
<a href="#">123027</a>	F	9/17-10/22	9:30-10:10am	\$70/\$105	●
<a href="#">123747</a>	F	11/5-12/17	9:30-10:10am	\$70/\$105	●
<b>Kid Rock I: 2-3 with adult</b>					
<a href="#">123029</a>	F	9/17-10/22	10:15-10:55am	\$70/\$105	●
<a href="#">123748</a>	F	11/5-12/17	10:15-10:55am	\$70/\$105	●
<b>Kid Rock III: 1-5 with adult</b>					
<a href="#">123031</a>	F	9/17-10/22	11-11:40am	\$70/\$105	●
<a href="#">123749</a>	F	11/5-12/17	11-11:40am	\$70/\$105	●

## Nature Outings

Ages: 2-5 with adult

Explore nature with themed exploratory walks, supported by a story and an interactive activity. Min/Max: 4/12. (rf)

Code	Day	Date	Time	R/NR Fee	
<b>Planting Day at Ackerman Park</b>					
<a href="#">123311</a>	F	9/17	10-11am	\$10/\$15	●
<b>Grasshoppers at Churchill Park</b>					
<a href="#">123842</a>	F	10/15	10-11am	\$10/\$15	●

## Storytimes in the Parks

Ages: All

Come out to your favorite neighborhood parks for songs, rhymes, and stories. Don't forget to bring a blanket and bug spray!

GLEN ELLYN  
PUBLIC  
LIBRARY

This program is designed for children and their grownups. Please plan to attend and be engaged with your child for this program. Drop offs are not allowed. For more information, please contact the Glen Ellyn Public Library. (jr)

Day	Date	Time	Location	Fee
Tu	9/7-9/28	10:30-11am	Lake Ellyn Park	Free
Th	9/9-9/30	10:30-11am	Danby Park	Free

## Stay & Play Open Gym

Ages: Walking to Preschool

Children (preschool or younger) are invited to join us for playtime in the Spring Avenue Gymnastics Center.

Pre-registration is not required but come early as space is limited to the first 30 participants. Children must be accompanied and supervised by an adult. This program is a great way to interact with your child in a safe and fun environment. It's also a great way to meet other parents and caregivers. Please pay at the Spring Avenue Recreation Center front desk. (ch)

**Days: Tuesdays & Fridays, 9am-11am**

**Dates: September 7 to December 17**

(excluding 11/23 and 11/26)

**Drop-in R/NR Fee: \$5/\$8**

**10-Visit Punch Card R/NR Fee: \$35/\$65**



# Youth & Teen Interest

## Who To Contact

**Brad Thomas (bt)**

[bthomas@gepark.org](mailto:bthomas@gepark.org)

(630) 942-7288

**Jeannie Robinson (jr)**

[jrobinson@gepark.org](mailto:jrobinson@gepark.org)

(630) 942-7267

**Chad Shingler (cs)**

[cshingler@gepark.org](mailto:cshingler@gepark.org)

(630) 942-7264

**Renae Frigo (rf)**

[rfrigo@gepark.org](mailto:rfrigo@gepark.org)

(630) 858-6037 x 6006

**Christine Hartnett (ch)**

[chartnett@gepark.org](mailto:chartnett@gepark.org)

(630) 942-7268

**Stacey Lim (sl)**

[slim@gepark.org](mailto:slim@gepark.org)

(630) 942-7275

## Kids' Night Out

Ages: 5-12

Your children will enjoy a night out with friends participating in games, sports drills, and arts & crafts all while supervised by the Ackerman SFC Team. Participants will receive a treat and water. Parents must accompany their children for check-in and check-out. If weather permits, this will be held outdoors. Location: Ackerman SFC. Min/Max: 10/25. (sl)

Code	Day	Date	Time	R/NR Fee
<a href="#">122947</a>	F	9/24	6-8pm	\$25/\$35 ●



## Gingerbread Class

Ages: 3-10 with adult

Make this holiday season extra special by creating a gingerbread house for your family! All materials included for each child and adult to make one gingerbread house together to take home. One child per house, please. Join the fun and get into the holiday spirit. Min/Max: 8/15. (cs)

Code	Day	Date	Time	R/NR Fee
<i>Held at Spring Avenue Recreation Center</i>				
<a href="#">123950</a>	M	12/13	6-7pm	\$32/\$48 ●
<i>Held at Ackerman SFC</i>				
<a href="#">123841</a>	W	12/15	6-7pm	\$32/\$48 ●



## Paper Airplane Contest

Ages: 6-12

Compete against Glen Ellyn's finest paper airplane builders to see who can fly their airplane the longest distance. Each participant will have three chances to outfly their fellow competitors for the 2021 Glen Ellyn Paper Airplane "Top Gun" award. Competitors are allowed to bring their planes to the event or make them on site. Planes will be launched from the top of the sled hill. Competition rules and guidelines will be emailed to registered participants. Location: Newton Park. Min/Max: 6/40. (ch)

Code	Day	Date	Time	Fee
<a href="#">123937</a>	F	9/17	6:30-8:30pm	Free ●

## Kids Paddle and Pizza

Ages: 5-14

Jump into this popular program and come out and play some paddle at Maryknoll Park. You will learn skills and drills, play a few games and then head inside for some pizza! Our Paddle Pro Mark Cunnington is sure to make this class a blast. Location: Platform Tennis Center. Min/Max: 4/16. (bt)

Code	Day	Date	Time	Fee
<a href="#">123268</a>	M	10/18-11/15	4:30-6pm	\$125 ●
<a href="#">123269</a>	Tu	10/19-11/16	4:30-6pm	\$125 ●



## Community CPR & First Aid

Ages: 16 and up

This Jeff Ellis and Associates certification class includes training and certification for CPR and AED use for adults, children, and infants along with first aid techniques. A written test is required to pass the course. Location: Spring Avenue Recreation Center. Min/Max: 10/25. (cs)

Code	Day	Date	Time	R/NR Fee
<a href="#">123955</a>	W	10/20	5-8pm	\$25/\$35 ●
<a href="#">123956</a>	W	12/1	5-8pm	\$25/\$35 ●

## MAGIC BY GARY KANTOR

### Magic Class

Ages: 5-12

Children are guaranteed a great time as they learn age-appropriate tricks: cards, ropes, coins, mind-reading, and more. The tricks appear difficult but are easy to learn and perform. All materials are provided; each child receives a magic kit to take home. Sign up for more than one session and learn new tricks each time. Location: Spring Avenue Recreation Center. Min/Max: 5/35. (jr)

Code	Day	Date	Time	R/NR Fee
<a href="#">123073</a>	W	9/29	5:15-6:10pm	\$22/\$33 ●
<a href="#">123779</a>	Th	11/18	6:45-7:40pm	\$22/\$33 ●

## Exploring the Wilds

Ages: 5-12

Small pockets of wild plants, animals, and places exist in our neighborhood parks. This series is meant to re-connect your kids to nature. We may get a little dirty, but exploring and learning about some of our wild neighbors can be a fun adventure. Min/Max: 4/12. (rf)

Code	Day	Date	Time	R/NR Fee
<b>Churchill Park</b>				
<a href="#">123313</a>	Sa	9/11	11am-1:30pm	\$10/\$15 ●
<b>Maryknoll Park</b>				
<a href="#">123843</a>	Sa	10/16	11am-12pm	\$10/\$15 ●

## Babysitting for Success

Ages: 10-15

Be the best babysitter you can be. In this class, students engage in discussion, role playing and practical experiences to learn diapering, feeding, playing with children, child development, handling emergencies, and first aid. Students should bring a snack and a doll to class. Students are awarded certificates upon completion. Resource materials are included. Location: Spring Avenue Recreation Center. Min/Max: 8/12. (jr)

Code	Day	Date	Time	R/NR Fee
<a href="#">123857</a>	Tu/Th/Tu	9/7, 9/9, 9/14	9/7 & 9/9: 5-8pm 9/14: 5-7pm	\$80/\$120 ●
<a href="#">123858</a>	Tu/Th/Tu	12/7, 12/9, 12/14	12/7 & 12/9: 5-8pm 12/14: 5-7pm	\$80/\$120 ●

## DUNHAM WOODS FARM

### Horsemanship for Kids

Ages: 9-17

In these beginning riding lessons, you will explore the proper ways to groom, tack, and handle horses. In the saddle, you will learn the basics of riding at the walk and trot. Riders should wear jeans or Jodhpur pants and hard soled riding or hiking boots with a small, low heel. Must have an approved riding helmet or bicycle helmet to ride. Location: Dunham Woods Farm, Elgin. Min/Max: 1/4. (jr)

**Register by 10/22**

Code	Day	Date	Time	R/NR Fee
<a href="#">123780</a>	Sa	10/30-12/4	1:30-2:30pm	\$171/\$256 ●



## Theater Prep

Ages: 8-15

Kids will sing, dance, and learn short acting scenes from a variety of theatrical numbers. This is the perfect class to experience what it is like to be a part of a show. We will finish the session with a performance for the family. Location: Main Street Recreation Center. Min/Max: 5/10. No class 11/22. (cs)

Code	Day	Date	Time	R/NR Fee	
<a href="#">123050</a>	M	9/20-10/25	6:45-7:30pm	\$60/\$90	●
<a href="#">123762</a>	M	11/1-12/13	6:45-7:30pm	\$60/\$90	●

## Mini Actors

Ages: 6-8

Does your child love to perform? This class will teach them the fundamentals of acting, singing, movement, and many other theatre techniques. A short performance on the last day of class will give the kids time to shine. Location: Main Street Recreation Center. Min/Max: 5/10. No class 11/22. (cs)

Code	Day	Date	Time	R/NR Fee	
<a href="#">123052</a>	M	9/20-10/25	5:45-6:30pm	\$60/\$90	●
<a href="#">123763</a>	M	11/1-12/13	5:45-6:30pm	\$60/\$90	●

## SHINING STAR PRODUCTION

### LOL Christmas Improv

Ages: 6-8

Join us for this delightful holiday improv class where every game you play and every scene you do will contain a Christmas, winter, or New Year's Eve theme. Get your Christmas Spirit in gear with plenty of creativity, spontaneity, and Ho-Ho-Hos in this one day only special event that will have you laughing out loud. It's the perfect addition to your holiday season. Location: Main Street Recreation Center. Min/Max: 7/11. (cs)

Code	Day	Date	Time	R/NR Fee	
<a href="#">123769</a>	W	12/22	6:15-7:45pm	\$29/\$44	●

## SHINING STAR PRODUCTION

### Young Actors Club

Ages: 6-8

Join the fun in this wonderful and fast-paced creative drama class. Each week is a new and exciting adventure into the imagination with changing themes, music, games, jokes, theater terms, and costume suggestions. You'll even learn a new joke every week. This class enhances spontaneity, helps to build self-esteem, and promotes creativity. Location: Main Street Recreation Center. Min/Max: 5/10. No class 11/24. (cs)

Code	Day	Date	Time	R/NR Fee	
<a href="#">123768</a>	W	11/3-12/15	5-5:45pm	\$69/\$104	●

## STICKY FINGERS COOKING

### Thyme to Turnip the Beet on What Kids Eat

Ages: 6-11

Let your children release their inner chef. In our first class, your kid chef will develop confidence in the kitchen by learning the fundamentals like measuring, mixing, mashing, blending, and more. These skills set the foundation for cooking and baking, and students will learn these skills while creating a delicious, sweet treat with a nutritious twist. Location: Spring Avenue Recreation Center.

Min/Max: 8/12. (jr)

Code	Day	Date	Time	R/NR Fee	
<a href="#">123752</a>	Tu	10/5-11/9	3:45-4:45pm	\$172/\$258	•
<a href="#">123753</a>	Tu	11/16-12/21	3:45-4:45pm	\$172/\$258	•

## MYPLATE2YOURS

### Kids CAN Cook

Ages: 6-11

When kids cook, they learn life skills, practice math and science, and have fun. At the end of the session, your child will sample two delicious recipes and have the confidence that kids can cook. Location: Spring Avenue Recreation Center. Min/Max: 5/16. (jr)

Code	Day	Date	Time	R/NR Fee	
<a href="#">123047</a>	W	9/8	4-6pm	\$32/\$48	•
<a href="#">123048</a>	W	9/29	4-6pm	\$32/\$48	•
<a href="#">123760</a>	W	10/13	4-6pm	\$32/\$48	•
<a href="#">123761</a>	W	11/10	4-6pm	\$32/\$48	•

## MYPLATE2YOURS

### Kids Create: Holiday Food Gifts

Ages: 5-12

This holiday season, kids are hoping to give gifts their families can enjoy. This holiday gift event is a great opportunity to make that happen. We are making two special food gifts that can be enjoyed when the gifts are given. Preview samples will be available for all class participants. On the menu: Holiday Hot Chocolate and Festive Trail Mix. Location: Spring Avenue Recreation Center. Min/Max: 6/16. (jr)

Code	Day	Date	Time	R/NR Fee	
<a href="#">123759</a>	W	12/8	4-6pm	\$36/\$54	•

## BRICKS 4 KIDZ

### LEGO STEM Workshop: Jurassic Brick Land

Ages: 5-9

Put on your hiking boots and camouflage...you're about to enter Jurassic Brick Land. Students will build a world that comes to life with gentle Brontosaurus, ferocious Velociraptor, terrifying T. Rex, and more. Each week students will learn fascinating facts about amazing dinosaurs and other extinct animals that roamed the earth and swam the seas during the age of dinosaurs. Our proprietary kits and model plans incorporate gears, axles, motors, battery packs, remote controls, and other technic Lego® components. Location: Main Street Recreation Center. Min/Max: 10/16. (jr)

Code	Day	Date	Time	R/NR Fee	
<a href="#">123751</a>	M	11/22-12/13	5-6pm	\$68/\$102	•

## BRICKS 4 KIDZ

### LEGO STEM Workshop: Forces of Nature

Ages: 5-9

Fasten your seatbelts; we're in for some wild weather. There is a lot of geography in this unit -- we'll examine a map of the Pacific "Ring of Fire" where most tsunamis occur, view a diagram of the tectonic plates, and learn how their movement creates earthquakes, define the area known as "Tornado Alley" in North America, and find out what hurricanes are called in different parts of the world. These lessons are designed to improve your child's understanding of the forces of nature, while taking care not to alarm. Each model represents the motion of that particular weather event, with a seat for a mini figure to take in the action. Location: Main Street Recreation Center. Min/Max: 10/16. (jr)

Code	Day	Date	Time	R/NR Fee	
<a href="#">123750</a>	M	10/18-11/8	5-6pm	\$68/\$102	•

**MONICA CORBETT**

## Piano for Kids: Beginners

Ages: 5-7

Young children, new to the piano, require engaging, age-appropriate instruction combined with whole body movement that inspires a fun and solid understanding of musical concepts. Students will experience movement, singing games, finger exercises, and imaginative stories as they apply what they learn to playing the piano. Students should have a piano or keyboard at home. An iPad is helpful, but not necessary, for additional at-home practice. \$15 Materials fee due first day of class. Location: Main Street Recreation Center. Min/Max: 4/6. No class 10/11, 10/25, 11/22. (cs)

**Register by 9/6**

Code	Age	Day	Date	Time	R/NR Fee
<a href="#">123896</a>	5	M	9/13-12/6	4:15-5pm	\$162/\$243 ●
<a href="#">123897</a>	5-7	M	9/13-12/6	5:15-6pm	\$162/\$243 ●
<a href="#">123898</a>	6-8	M	9/13-12/6	6:15-7pm	\$162/\$243 ●



**MONICA CORBETT**

## Piano for Kids: Semi-Private Lessons

Ages: 6-14

Not quite ready for private lessons? Do you like learning with a friend or sibling? Enjoy the camaraderie of learning with another student in a semi-private piano lesson with Miss Monica. Location: Main Street Recreation Center. Min/Max: 2/2. No class 10/11, 10/12, 10/25, 11/22, 11/23. (cs)

**Register by 9/6**

Code	Day	Date	Time	R/NR Fee
<a href="#">123899</a>	M	9/13-12/6	7-7:30pm	\$243/\$365 ●
<a href="#">123900</a>	Tu	9/14-12/14	4:30-5pm	\$292/\$438 ●



**MONICA CORBETT**

## Piano for Kids: Private Lessons

Ages: 7-14

Start or continue your piano journey with Ms. Monica as you learn to play fun and challenging songs. Using the Faber Piano adventures curriculum, students will play songs with both hands as they learn about the treble and bass clef, key signatures, and tempo with an encouraging and supportive teacher. Student's piano learning is enhanced with theory, chord playing, and improvisation. Location: Main Street Recreation Center. Min/Max: 1/1. No class 10/12, 11/23. (cs)

**Register by 9/7**

Code	Day	Date	Time	R/NR Fee
<a href="#">123901</a>	Tu	9/14-12/14	4-4:30pm	\$373/\$560 ●
<a href="#">123902</a>	Tu	9/14-12/14	5-5:30pm	\$373/\$560 ●
<a href="#">123903</a>	Tu	9/14-12/14	5:30-6pm	\$373/\$560 ●
<a href="#">123904</a>	Tu	9/14-12/14	6-6:30pm	\$373/\$560 ●
<a href="#">123905</a>	Tu	9/14-12/14	6:30-7pm	\$373/\$560 ●
<a href="#">123906</a>	Tu	9/14-12/14	7-7:30pm	\$373/\$560 ●



## Ackerman Arts & Crafts

Ages: 6-12

Join us as we make a new art project each week including painting birdhouses, necklaces, clay sculptures and more. All you need to bring is your creativity. Location: Ackerman SFC. Min/Max: 5/25. (s)

Code	Day	Date	Time	R/NR Fee	
<a href="#">123004</a>	Sa	9/11-9/25	10-11am	\$30/\$45	●
<a href="#">123005</a>	W	9/8-9/29	4-5pm	\$40/\$55	●
<a href="#">123724</a>	Sa	10/9-10/30	10-11am	\$40/\$55	●
<a href="#">123725</a>	Sa	11/6-11/29	10-11am	\$30/\$45	●

## Sew Simple - Hand Sewing

Ages: 5-7

Learn hand sewing with step by step instructions. Sewers will learn hand stitching, how to thread a needle and sew on a button in this beginner class. Sign up with a friend for even more fun. Location: Spring Avenue Recreation Center. Min/Max: 3/10. (jr)

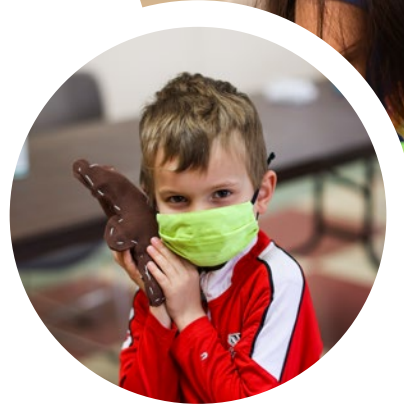
Code	Project	Day	Date	Time	R/NR Fee	
<a href="#">123067</a>	Teddy Bear	Tu	9/14	4-5:30pm	\$22/\$33	●
<a href="#">123764</a>	Pumpkin	Tu	10/19	4-5:30pm	\$25/\$38	●
<a href="#">123765</a>	Teddy Bear	M	11/22	3-4:30pm	\$25/\$38	●
<a href="#">123766</a>	Ornament	Tu	12/14	4-5:30pm	\$25/\$38	●

## Sewing Machine Basics

Ages: 8-13

Learn how to sew on a sewing machine or continue your machine skills while making a variety of useful items. Bring your own sewing machine, or use one here, and a yard of woven cotton fabric to make your own pillowcase. Sewing is a skill you can use your whole life. Location: Spring Avenue Recreation Center. Min/Max: 2/9. (jr)

Code	Day	Date	Time	R/NR Fee	
<a href="#">123767</a>	Th	10/7-10/28	4:15-6pm	\$258/\$384	●



### LISA LOMBARDI COACHING

## Have the Slime of Your Life - Glow

Ages: 6-13

Let's get ready for Halloween and make some horrific haunted glow in the dark slime. Have the slime of your life in this fall themed lab. Kids take their slime home and a slimy surprise too. Location: Spring Avenue Recreation Center. Min/Max: 7/13. (jr)

Register by 9/7

Code	Day	Date	Time	R/NR Fee	
<a href="#">123071</a>	Th	9/30	5-6pm	\$35/\$49	●

### LISA LOMBARDI COACHING

## Grinch Goo-Tastic Slime Lab

Ages: 6-12

This Grinch inspired evening will have a concoction lab including all the colors of Christmas. Grinch hearts and "ornaments" as mix-ins, along with winter scents, will make kids feel like they are in the Grinch story. Powerful Grinch life coaching lessons regarding kindness, empathy, resilience, and happiness are peppered throughout the fun event from a Certified Professional Life Coach. Location: Main Street Recreation Center. Min/Max: 7/16. (jr)

Register by 12/15

Code	Day	Date	Time	R/NR Fee	
<a href="#">123778</a>	M	12/20	5-6pm	\$29/\$44	●



## GLITZY GIRLZ

### Kids Just Wanna Have Fun

Ages: 4-10

Each child will have a make-over done with hairpiece, sparkle, make-up, and nail polish application. They will decorate a cute craft with paints, glitter glues, and embellishments, and design a beautiful, beaded bracelet with assorted fun charms. Staff will lead a high energy dance session with Limbo and Freeze Dance. Each child leaves with a GLAM gift. Location: Spring Avenue Recreation Center. Min/Max: 3/6. (cs)

Code	Day	Date	Time	R/NR Fee
<a href="#">123772</a>	Th	9/23	6-7:15pm	\$36/\$54 •



## GLITZY GIRLZ

### Parent/Child Holiday Memories

Ages: 3-10

Glitzzy Girlz staff will assist each couple in making three personalized gifts for family members. Those gifts include, a ceramic piece, wooden item, beaded accessory to decorate with paints, glitter glues, and embellishments with personalization. A unique DIY wrapping station adds creative ways to conceal your surprises with cards. Only children need to register. Location: Spring Avenue Recreation Center. Min/Max: 3/5. (cs)

Code	Day	Date	Time	R/NR Fee
<a href="#">123770</a>	Th	12/16	6-7:15pm	\$36/\$54 •

## CHERYL RAUSCH ART

### The Procreate App Basics 101

Ages: 12-18

Procreate for the iPad is one of the most popular digital illustration programs to use for both amateurs and professionals alike. Find out about the basics of this powerful digital illustration app so that you can go from start to finish with your own artwork. Participants must have their own iPad, apple pencil and the Procreate app installed for enrollment in this class. Location: Spring Avenue Recreation Center. Min/Max: 4/30. (cs)

Code	Day	Date	Time	R/NR Fee
<a href="#">123754</a>	Sa	11/6	10am-12pm	\$36/\$54 •

## CHERYL RAUSCH ART

### Pet Portraits in Colored Pencils

Ages: 16 and up

Create your own pet portrait using colored pencils. All supplies will be provided to everyone in attendance. You need only to bring a color copy or photograph of your pet to use as reference, and the instructor will help you with the rest. Required: email your chosen pet photograph to the instructor ([cherylrausch@me.com](mailto:cherylrausch@me.com)) when you register. Location: Spring Avenue Recreation Center. Min/Max: 4/25. (cs)

Code	Day	Date	Time	R/NR Fee
<a href="#">123756</a>	Th	11/11	6-8pm	\$36/\$54 •

## CHERYL RAUSCH ART

### Create Your Favorite Monster with Colored Pencils

Ages: 5-15

Learn how to create a color drawing of your favorite scary monster. Participants only need to bring their monster ideas and imagination. Location: Spring Avenue Recreation Center. Min/Max: 4/25. (cs)

Code	Day	Date	Time	R/NR Fee
<a href="#">123755</a>	Sa	10/23	10am-12pm	\$36/\$54 •



# Adventure Time

## BEFORE & AFTER SCHOOL CARE



This program is located at Forest Glen and Churchill Elementary Schools. Adventure Time staff provide supervised recreational activities, allowing time outside and indoors for students to unwind or gear up with sports, arts & crafts, and games. Quiet time is available for homework and relaxing with friends new and old.

### Registration

Registration will be for the complete school year (August-June). Children may be signed up for 3, 4 or 5 days a week; mornings, afternoons or both! Parents, you may choose which days of the week you wish to use. A non-refundable \$50 deposit is required to register. Children in kindergarten are welcome to enroll, but only for the AM session if they attend AM kindergarten or the PM session if they attend PM kindergarten.

#### FOREST GLEN ELEMENTARY SCHOOL

Address: 501 Elm St., Glen Ellyn • Min/Max per Day: 15/25

Days Per Week	7am-8:30am	3:30pm-6pm	7am-8:30am & 3:30pm-6pm	Deposit Code
3 Days	\$117	\$195	\$288	
4 Days	\$156	\$260	\$384	<a href="#">123638</a> ●
5 Days	\$195	\$325	\$480	

#### CHURCHILL ELEMENTARY SCHOOL

Address: 240 Geneva Rd., Glen Ellyn • Min/Max per Day: 15/25

Days Per Week	7am-8:30am	3:30pm-6pm	7am-8:30am & 3:30pm-6pm	Deposit Code
3 Days	\$117	\$195	\$288	
4 Days	\$156	\$260	\$384	<a href="#">123637</a> ●
5 Days	\$195	\$325	\$480	

### Parent Information Packet

Program information will be emailed to families enrolled in the deposit code. For more information, contact Jeannie Robinson at [jrobinson@gepark.org](mailto:jrobinson@gepark.org) or (630) 942-7267.

### Payments

This program is billed monthly via an Electronic Fund Transfer (Visa, MasterCard, AMEX or Discover Card) for nine months during the school year. Payments will be made on the 1st of each month, with the first month due September 1st and concluding with the last payment on May 1st.

### Important Dates

**START DATE:** August 18, 2021 | **END DATE:** May 27, 2022

#### ADVENTURE TIME WILL NOT MEET:

Adventure Time will not meet on legal public holidays as determined by the District 41 school calendar or over Thanksgiving, Winter, and Spring breaks.

#### EARLY DISMISSAL & TEACHER INSTITUTE DAYS:

On early dismissal days, children will be dismissed to the Adventure Time room. On teachers' institute days Adventure Time will be operating at Forest Glen only (Churchill children should be dropped off at Forest Glen on these days) and will be available from 7am-6pm. Please provide a lunch. Special events and activities are planned on SIP and Teacher Institute days, more information will be provided in each month's newsletter. (jr)

# Adult & Senior Interest

## Who To Contact

**Brad Thomas (bt)**

[bthomas@gepark.org](mailto:bthomas@gepark.org)

(630) 942-7288

**Jeannie Robinson (jr)**

[jrobinson@gepark.org](mailto:jrobinson@gepark.org)

(630) 942-7267

**Chad Shingler (cs)**

[cshingler@gepark.org](mailto:cshingler@gepark.org)

(630) 942-7264

**Stacey Lim (sl)**

[slim@gepark.org](mailto:slim@gepark.org)

(630) 942-7275

## DUNHAM WOODS FARM

### Horsemanship for Adults

Ages: 18 and up

Join the fun at Dunham Woods Farm with beginning riding lessons. You will learn the proper ways to groom, tack, and handle horses. In the saddle, you will learn the basics of riding at the walk or trot. Riders should wear jeans/jodhpur, hiking/riding boots and an approved riding/bicycle helmet.

Location: Dunham Woods Farm, Elgin. Min/Max: 1/4. (jr)

Register by 10/22

Code	Day	Date	Time	R/NR Fee
<a href="#">123781</a>	W	10/27-12/1	7-8pm	\$171/\$256 ●

### Mindfulness Meditation

Ages: 14 and up

Train your mind the way you train your body for the perfect antidote to daily stress. Chopra Center certified instructor Stephanie Frantz will teach you centuries old meditation and breathing techniques to relax and increase your overall sense of well-being. Location: Main Street Recreation Center. Min/Max: 2/15. (jr)

Code	Day	Date	Time	R/NR Fee
<a href="#">123114</a>	W	9/8	7-7:50pm	\$36/\$54 ●
<a href="#">123785</a>	Sa	10/30-11/20	11-11:50am	\$72/\$108 ●

### Community CPR & First Aid

Ages: 16 and up

This Jeff Ellis and Associates certification class includes training and certification for CPR and AED use for adults, children, and infants along with first aid techniques. A written test is required to pass the course. Location: Spring Avenue Recreation Center. Min/Max: 10/25. (cs)

Code	Day	Date	Time	R/NR Fee
<a href="#">123955</a>	W	10/20	5-8pm	\$25/\$35 ●
<a href="#">123956</a>	W	12/1	5-8pm	\$25/\$35 ●



## DANCIN FEET

### West Coast Swing

Ages: 18 and up

West Coast Swing is a very popular form of swing dancing that has spread across the world. Although it's history and roots come from Lindy Hop, part of the appeal of WCS is that it is an adaptable dance; it can be danced to a variety of musical styles and genres. In addition, the dance itself creates room for improvisation and interaction between the partners like a conversation. Location: Spring Avenue Recreation Center. Min/Max: 4/10. No class 11/23. (cs)

Code	Day	Date	Time	R/NR Fee
<a href="#">123790</a>	W	9/29-11/3	7-8pm	\$52/\$78 ●
<a href="#">123791</a>	W	11/10-12/15	7-8pm	\$43/\$65 ●

## DANCIN FEET

### Swing Dance

Ages: 18 and up

Swing dance, known also as Jitterbug and East Coast Swing, is a very popular and versatile dance. This class will teach you how to dance swing with ease and confidence. Basic lead and follow techniques will be covered in addition to many popular patterns. Class is open to couples, as well as singles. Location: Spring Avenue Recreation Center. Min/Max: 4/10. (cs)

Code	Day	Date	Time	R/NR Fee
<a href="#">123792</a>	Th	9/30-11/4	6:30-7:30pm	\$52/\$78 ●
<a href="#">123793</a>	Th	11/11-12/16	6:30-7:30pm	\$43/\$65 ●

## DANCIN FEET

### Ballroom Dance

Ages: 18 and up

Learn the basics of Waltz and Foxtrot. Register with your favorite partner and spend an enjoyable, fun, and energy-packed dance session. You'll be ready to hit the dance floor in no time. Class is open to couples as well as singles. Location: Spring Avenue Recreation Center. Min/Max: 4/10. (cs)

Code	Day	Date	Time	R/NR Fee
<a href="#">123794</a>	Th	9/30-11/4	7:30-8:30pm	\$52/\$78 ●
<a href="#">123795</a>	Th	11/11-12/16	7:30-8:30pm	\$43/\$65 ●

## Thirsty Thursday on the Deck

Ages: 21 and up

Grab a group of friends and head down to Lake Ellyn for a relaxing evening on the Boathouse patio and deck. Craft beer and wine will be for sale by Glen Ellyn's own, The Beer Cellar. Enjoy a beverage, mix and mingle, and we'll provide the live entertainment and light snacks to cap-off a perfect night. Pre-registration available online; registration fee includes your first drink ticket. Tickets at the door will be cash only, if available. Location: Lake Ellyn Boathouse. (jr)

Code	Day	Date	Time	Fee
<a href="#">123847</a>	Th	10/7	6:30-9pm	\$15 •

## WERQ-A-THON

Ages: All

WERQ for a good cause! Join Ackerman SFC's WERQ instructors for two hours of cardio dance fun in support of The Breast Cancer Research Foundation. There will be snacks, water, and giveaways at the event. Registered participants receive a WERQ-A-Thon t-shirt. Must be an Ackerman SFC member to receive the \$15 fee. Additional donations will be accepted at the event. Location: Ackerman SFC. (sl)

Code	Day	Date	Time	M/NM Fee
<a href="#">123907</a>	Su	10/10	11am-1pm	\$15/\$20 •

## Turkey Burn

Ages: 14 and up

Earn that extra helping of mashed potatoes and help feed the less fortunate! Join us for a morning of calorie-burning fun featuring a selection of some of your favorite group fitness classes. The "fee" to participate is a non-perishable food item (or toiletry) donation. Donations will benefit the Glen Ellyn Food Pantry. Location: Ackerman SFC. (sl)

**No registration required**

Day	Date	Time	Fee
Th	11/25	7-10am	Free with non-perishable food item (or toiletry) donation

## New Year's Day Burn

Ages: 14 and up

Jumpstart your resolution and help make hunger history. Head to Ackerman SFC for a morning of calorie-burning group fitness classes. The "fee" to participate is a non-perishable food item (or toiletry) donation. Donations will benefit the Glen Ellyn Food Pantry. No registration required. Location: Ackerman SFC. (sl)

**No registration required**

Day	Date	Time	Fee
Sa	1/1	8-11am	Free with non-perishable food item (or toiletry) donation



### CHERYL RAUSCH ART

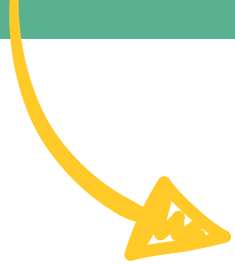
## Uncorked Creatives

Ages: 21 and up

Spend a fun evening creating a themed canvas painting. All art supplies will be provided, so attendees just need to bring their own beverage of choice and the willingness to have fun with paint. Location: Lake Ellyn Boathouse.

Min/Max: 4/40. (cs)

Code	Theme	Day	Date	Time	R/NR Fee
<a href="#">123788</a>	Halloween	Th	10/21	7-9pm	\$55/\$82 •
<a href="#">123789</a>	Holidays	Th	11/18	7-9pm	\$55/\$82 •



## Quick Start Paddle

Ages: 21 and up

This crash course will keep your skills fresh, so you're ready for the season. You will learn all of the basic paddle shots in this fun and fast paced lesson with our pro, Mark Cunnington. Location: Platform Tennis Center.

Min/Max: 6/8. (bt)

Code	Section	Day	Date	Time	M/NM Fee
<a href="#">123266</a>	Men	Tu	9/28-10/26	6-7pm	\$125/\$150 ●
<a href="#">123267</a>	Women	M	9/27-10/25	6-7pm	\$125/\$150 ●

## Beginner Paddle Boot Camp

Ages: 21 and up

This two-hour boot camp will go over all the basics, including grips, technique, and strategy. The program will end with you playing paddle like a pro! Location: Platform Tennis Center. Min/Max: 6/8. (bt)

Code	Section	Day	Date	Time	M/NM Fee
<a href="#">123272</a>	Women	Th	9/9	6-8pm	\$50/\$70 ●
<a href="#">123271</a>	Men	F	9/16	6-8pm	\$50/\$70 ●

## FREE Adult Pickleball Clinic

Ages: 18 and up

Learn to play the fast and fun game of pickleball. Bring your paddle if you have one or you can borrow one of ours. Free juice and bagels will be provided for all players. Once you try it you will be hooked. Free, but registration required. Contact Mark Cunnington at [gepaddlepro@gmail.com](mailto:gepaddlepro@gmail.com) for more information. Location: Village Green Park. Min/Max: 8/20. (bt)

Code	Day	Date	Time	Fee
<a href="#">123260</a>	Sa	WAITLIST		Fee w/registration ●
<a href="#">123261</a>	Sa	WAITLIST		Fee w/registration ●

## Pickleball Start/Restart

Ages: 18 and up

Join us for Pickleball Start/Restart and learn the basic skills, grips, and strategies to the game. This is a great class for beginners. For those more experienced players, there is also an intermediate level class. Players are required to provide their own paddle. Location: Village Green Park. Min/Max: 4/12. (bt)

Code	Level	Day	Date	Time	R/NR Fee
<a href="#">123832</a>	Beg.	Th	9/23-10/28	10-11am	\$90/\$135 ●
<a href="#">123835</a>	Beg.	Th	9/23-10/28	5-6pm	\$90/\$135 ●
<a href="#">123949</a>	Int.	W	9/22-10/27	12-1pm	\$90/\$135 ●

## Pickleball In-House League

Ages: 18 and up

Our staff will provide basic instruction to players and place players on teams based on their skill levels. Players will work on various skills and drills the first two weeks and then play matches for the remainder of the season. Location: Village Green Park. Min/Max: 8/30. (bt)

Code	Day	Date	Time	R/NR Fee
<a href="#">123838</a>	W	9/22-10/27	1-3pm	\$125/\$175 ●



## Men's Basketball League

Ages: 18 and up

Teams plays an 8-game regular season followed by a single elimination postseason tournament for those teams that qualify. A first-come, first-serve policy will be followed. Email Brad at [bthomas@gepark.org](mailto:bthomas@gepark.org) for a copy of the league information packet. Location: Ackerman SFC. Min/Max: 4/10. No games 9/26. (bt)

**Register by 9/1**

Code	League	Date	R/NR Fee
<a href="#">123246</a>	Sunday AM Open	9/12-11/7	\$625/\$725 per team ●

## Adult Co-Ed Volleyball League

Ages: 18 and up

Teams play an 8-game regular season followed by a single elimination post-season tournament. League play begins September 14. Location: Ackerman SFC. (sl)

**Register by 9/7**

Code	Day	Date	Time	R/NR Fee
<a href="#">123014</a>	F	9/10-11/12	8-10pm	\$545/\$645 per team ●

## 46 & Older Basketball

Ages: 46 and up

Pick-up games are organized nightly, and participants should bring their own basketball. Pre-registration required. Location: Hadley Junior High. Min/Max: 10/50. No games 11/25, 12/23, 12/30. (bt)

Code	Day	Date	Time	R/NR Fee
<a href="#">123242</a>	Th	10/28-5/19	7:30-9:30pm	\$25/\$32 ●



## Ackerman SFC Open House

Saturday, Sept. 18, 11am-1pm

Held at Ackerman SFC

Take part in a variety of fitness and youth classes, tour the facility, and learn about our personal training options. There will also be giveaways for attendees. Plus, anyone that signs up during the Open House will receive one month free on their membership. Free and open to the public.



## Personal Training

Our certified personal trainers will design a program that meets your specific fitness needs. They can help you reach and/or maintain your goal by guiding you through safe, productive, supervised workouts.

[Learn more »](#)

# Senior Programs

## SARC Senior Clubs

All SARC Senior Clubs are free programs for all those over 60 to enjoy. All clubs will meet at Spring Avenue Recreation Center. There is no fee to participate. Please reach out to at (630) 858-2462 with any questions. (jr)

### Book Club • Third Monday • 10-11am

Are you an avid reader and enjoy discussing the books you read? Join us as we host our monthly book club. Books can be checked out at the Glen Ellyn Park District.

### Poker Club • Wednesdays • 1-3pm

Join us Wednesday afternoons for poker.

### Senior Social Hour • Thursdays • 9:30-11:30am

Enjoy knitting, playing cards, or just chatting? This is the place for you. Bring your coffee and catch up with friends or meet new friends from the community.

## Eastern Philosophy & Qigong

Ages: 55 and up

Eastern mystics have practiced longevity exercises for millennia with the goal of prolonging life and ultimately achieving immortality. Part lecture, part practice; this class aims to demystify the Eastern philosophies of Yin and Yang, The Tao, The Five Elements, and more in a classroom setting. Learn basic Qigong exercises and meditations that begin the practices that lead to health and longevity. The exercises are effective and easy to learn, using slow, gentle, graceful rocking and stretching motions combined with relaxed breathing they can help calm your mind, reduce tension and anxiety, regulate heart rate and blood pressure, boost energy, and lower blood pressure. For the exercises participants may choose to sit or stand as needed. Location: Bloomingdale Park District. Min/Max: 8/20. (jr)

Code	Day	Date	Time	R/NR Fee
<a href="#">123786</a>	F	10/1-10/29	1-4pm	\$100/\$105 •



## T'ai Chi for Health

Ages: 55 and up

T'ai Chi for Health is a gentle, beautiful, and flowing exercise routine that is a joy to do, energizing, and deeply relaxing; it brings health and vitality to all who practice it. The movements are all done naturally and gently. The gentle rocking motions and stretching movements improve circulation and digestion; and reduce physical tension. The controlled breathing reduces stress and anxiety, helping calm the mind. It helps regulate heart rate and blood pressure, boosting energy. The exercises are very effective and easy to learn. Students may choose to sit or stand as needed; making this class suitable for all ages and abilities. Location: Spring Avenue Recreation Center. Min/Max: 8/20. (jr)

Code	Day	Date	Time	R/NR Fee
<a href="#">123116</a>	W	9/29-11/17	2:30-3:30pm	\$85/\$90 •

## Chair Yoga

Ages: 55 and up

Experience the freedom of movement as you work with your breath to create space and length in your body. Gentle stretching and strengthening through chair postures are available to all in this chair yoga class with standing postures adapted to your ability. Location: Spring Avenue Recreation Center. Min/Max: 4/10. (jr)

Code	Day	Date	Time	R/NR Fee
<a href="#">123787</a>	W	10/13-11/17	9:15-10am	\$68/\$102 •

## United Health Care Medicare Advantage

Ages: 64 and up

This session will cover in detail the Medicare Advantage Plan offered by United Healthcare. Instructor: Simon Burke. Location: Spring Avenue Recreation Center. Min/Max: 2/10. (jr)

Code	Day	Date	Time	Fee
<a href="#">123782</a>	M	10/18	10-11am	Free •
<a href="#">123783</a>	W	11/17	10-11am	Free •

## AETNA Medicare

Ages: 64 and up

This session will cover AETNA's Medicare Advantage Plan. Instructor: Simon Burke. Location: Spring Avenue Recreation Center. Min/Max: 2/10. (jr)

Code	Day	Date	Time	Fee
<a href="#">123784</a>	Th	10/21	10-11am	Free •

## ILLINOIS SECRETARY OF STATE

### Rules of the Road

Ages: 65 and up

The Rules of the Road Review Course is designed to give drivers – especially senior citizens and persons with disabilities – the knowledge and confidence needed to renew or obtain a driver's license. The review course combines an explanation of the driving exam with a practice written exam. Location: Main Street Recreation Center. Min/Max: 5/20. (jr)

Day	Date	Time	Fee
F	11/19	10am-12pm	Free, but registration required by calling (630) 858-2463 •

### AARP Driver Safety Program

Ages: 55 and up

Become a safer driver by sharpening your defensive driving skills. Our class combines discussion and text. Completion of this program entitles you to a reduction on your automobile insurance premium. No refund after the first meeting. Register online or call (630) 858-2463 to make your appointment. Location: Main Street Recreation Center. Min/Max: 5/25. (jr)

Code	Day	Date	Time	R/NR Fee
<a href="#">123796</a>	W-Th	10/27-10/28	9am-1pm	\$26/\$39 •

We accept SilverSneakers

# Be Active. Live Healthy.

Ackerman SFC offers reduced membership rates and a variety of classes for adults ages 60 and better. [www.AckermanSFC.com](http://www.AckermanSFC.com)

Oliver Ellyn Park District  
**Ackerman**  
Sports & Fitness Center



# Trips



## Kinky Boots

Ages: 18 and up

*Kinky Boots* is Broadway's huge-hearted, high-heeled hit with songs by Grammy and Tony winning pop icon Cyndi Lauper. Charlie Price is a reluctant show maker. Lola is a fierce drag queen. These two could not be any more different, but when they find a common ground in shoes, they see a whole new world of possibilities open up to them that will turn their small-town upside down and just might save Charlie's failing show factory. We will be enjoying lunch at The White Chocolate Grill which will include four cheese spinach and artichoke appetizer, choice of entrée: 1) Rustic Club Sandwich, 2) Blackened Fish Sandwich, 3) Famous Chicken salad or 4) WCG Cheeseburger and a white chocolate brownie for dessert. Coffee/tea included. Please make selection upon registering. Departs from: Wheaton Park District Community Center. Min/Max: 5/10. (jr)

Code	Day	Date	Time	Fee
<a href="#">123139</a>	W	9/15	10:30am-4:30pm	\$99 ●

## Let Odyssey Show You Chicago

Ages: 18 and up

Experience the new Odyssey Chicago River, a European-inspired ship fully glass-enclosed and ready to show you the city from a whole new perspective. The single-level, glass-enclosed boat will ply the waters of the Chicago River, offering stunning 360-degree views of the surrounding architecture. Every cruise promises unmatched views of the city's world-renowned architectural feats from Marina City and the Merchandise Mart to the Lyric Opera of Chicago, Willis Tower and more. Delight in upscale dining with a choice of meals. Meal choice available at time of registration. Coffee/tea included. Departs from: Wheaton Park District Community Center. Min/Max: 5/10. (jr)

Code	Day	Date	Time	Fee
<a href="#">123138</a>	W	9/29	10:30am-4pm	\$115 ●

## WNDR & Heights

Ages: 18 and up

Enjoy a private viewing of the new WNDR Museum, a cultural and artistic hub that is constantly changing to fit the needs of the world around it. WNDR reimagines the traditional museum experience through interactive, immersive experiences from the artist, collectives, and studios locally and globally. After a morning of wonder, enjoy lunch at LaBriola Chicago. Lunch includes a Riviera salad, choice of 1) Richie's lemon chicken breast, 2) Seared salmon or 3) Eggplant parmesan and a family style dessert platter. Coffee/tea included. After lunch we will visit the Chicago Architecture Center. Spend the afternoon on a self-guided tour of all their exhibits. Departs from: Wheaton Park District Community Center. Min/Max: 3/5. (jr)

Code	Day	Date	Time	Fee
<a href="#">123800</a>	W	10/20	8:45am-4:30pm	\$99 ●

## Mystery in the Mansion

Ages: 18 and up

Just in time for Halloween - let the real mystery begin. You will arrive at the Jacob Henry mansion where you will be greeted by your intriguing hosts. Your personalized mystery is filled with suspense, puzzling clues, and fun. The best is yet to come...when the killer is actually one of you. Everyone becomes involved to solve our Mystery in the Mansion. Lunch includes a fresh tossed garden salad with house dressing, warmed rolls and bread with whipped butter, pot roast with chef's choice potato and steamed vegetable and dessert. Coffee/tea included. Also feel free to enjoy a self-guided tour of the Jacob Henry Mansion before we depart for the day. Departs from: Wheaton Park District Community Center. Min/Max: 3/5. (jr)

Code	Day	Date	Time	Fee
<a href="#">123801</a>	Th	10/28	10am-3pm	\$89 ●

## Merry Milwaukee

Ages: 18 and up

It's the most wonderful time of the year for holiday sweets and treats. Visit 4-6 bakeries and shops during this extremely popular Christmas Bakery Bus Tour. At each of the stops, you will receive treats, samples, and shopping time. In route to each location, your fully narrated tour includes the history of Christmas holiday traditions of the Polish, Germans, Italians, Irish, and more. Enjoy a generously portioned, sit-down lunch. Menu unavailable at time of print. Wear your best ugly Christmas sweater and join us for this fun, new tour. Departs from: Wheaton Park District Community Center. Min/Max: 3/5. (jr)

Code	Day	Date	Time	Fee
<a href="#">123802</a>	Tu	12/7	7:30am-4:30pm	\$129 •

## Glen Ellyn Cruisin' Crew: Village Tavern & Grill

Ages: 50 and up

Join us as we adventure to Village Tavern & Grill to enjoy time together. This is a great chance to socialize and meet new people in the area. Take a ride with the Park District for just \$5. Participants are responsible for all costs at the different locations. Registration is required for all attendees. Bus will depart from Maryknoll Park. Due to current COVID-19 guidelines, bus spots are limited to 7 individuals. Face coverings will be required while on the bus and at all locations. Proper social distancing guidelines will be enforced. Min/Max: 4/7. (jr)

Code	Day	Date	Time	Fee
<a href="#">123134</a>	Tu	9/14	10:45am-1:45pm	\$5 bus fee •

# Spring Avenue Dog Park



WHERE PETS COME TO PLAY.

Unleash some fun at this popular outdoor park where dogs can exercise, play, and socialize off-leash. Your four-legged friend will pawsitively love it.

Starting at  
**\$35**  
for residents

MEMBERSHIP OPTIONS & MORE »

# Nature Programs

## Who To Contact

Renae Frigo (rf)

[rfrigo@gepark.org](mailto:rfrigo@gepark.org)

(630) 858-6037 x 6006

## VIRTUAL PROGRAM

# Healthy Hedges & Trees

Ready to clear and replace the invasive woody plants from your yard? Join the Morton Arboretum and Chicago Region Trees Initiative for this informative talk on identifying invasives and choosing replacement trees and shrubs that will thrive in our climate zone. The Glen Ellyn Environmental Commission and Glen Ellyn Park District are sponsoring this talk in support of a region-wide initiative to remove European Buckthorn, a threat to local trees, shrubs, and wildlife. (rf)



## Pumpkin Smash

Do not trash your pumpkins, smash them! Drop off jack-o-lanterns for composting at Village Green Park. Drop and go or take the opportunity to smash and chop your pumpkin – it will add nutrients to our community garden soil while keeping pumpkins out of the landfill. Please no painted pumpkins and all decorations and candles must be removed. If you stay to smash – please bring a baseball bat and shovel! Location: Village Green Park. (rf)

Day	Date	Time	Fee
Sa	11/6	9-11am	Free

## Eco-Movie in the Park & Sustainability Fair

DATE: SEPTEMBER 14

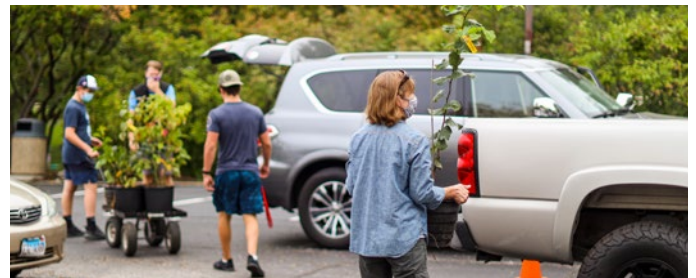
LOCATION: LAKE ELLYN PARK

Soil is the foundation of food, fuel, and life! A shortened 45-minute version of the 2020 documentary Kiss the Ground will be shown outdoors in the park, followed by a short panel discussion with local soil and garden experts. Before the film, visit with local organizations that work to improve soil, grow food, encourage composting, support local farmers, and combat food security issues. Bring along canned goods to support the Fuel Pantry.

**ABOUT THE FILM:** A documentary featuring science experts and celebrity activists that unpack the ways in which the earth's soil may be the key to combating climate change and preserving the planet.

Participating Groups: College of DuPage, Sustain DuPage, Chicago Region Trees Initiative, Glen Ellyn Environmental Commission, Prairie Food Co-Op, The GardenWorks Project, and The Resiliency Institute. (rf)

6:30-7:30pm .....Sustainability Fair  
7:30-8:15pm.....Screening of Kiss the Ground  
8:15-8:30pm.....Panel and Audience Discussion



## Native Tree & Shrub Sale

Add native trees and shrubs to your yard this fall. They require less maintenance, are adapted to our climate, and support regional wildlife. The Park District, The Conservation Foundation, and the Glen Ellyn Environmental Commission are partnering to offer this opportunity. The plants are in five-gallon containers and fit in most standard cars for transporting home.

This is a pre-order sale.  
Orders open August 15 and close at 5pm  
September 15. Pick-up will be on Saturday,  
September 25, 9-11am at Sunset Pool. (rf)

[LEARN MORE & ORDER >](#)

## Ghost Hunt

Ages: All

Join us at sunset to search for hidden ghosts throughout Churchill Park. Successfully find the ghosts and answer a few nature trivia questions – win a Halloween goody bag. Please park at Churchill School and meet at the picnic tables near the gymnasium. Bring a flashlight. This is a non-scary event. Fee is per child. Adult accompaniment is required, as this is self-guided. Location: Churchill Park. Max: 50. (rf)

**Register by 10/25**

Code	Day	Date	Time	R/NR Fee
<a href="#">123844</a>	Sa	10/30	6-7pm	\$10/\$15 ●

## Exploring the Wilds

Ages: 5-12

Small pockets of wild plants, animals, and places exist in our neighborhood parks. This series is meant to re-connect your kids to nature. We may get a little dirty, but exploring and learning about some of our wild neighbors can be a fun adventure. Min/Max: 4/12. (rf)

Code	Day	Date	Time	R/NR Fee
<b>Churchill Park</b>				
<a href="#">123313</a>	Sa	9/11	11:30am-1pm	\$10/\$15 ●
<b>Maryknoll Park</b>				
<a href="#">123843</a>	Sa	10/16	11am-12pm	\$10/\$15 ●

## Nature Outings

Ages: 2-5 with adult

Explore nature with themed exploratory walks, supported by a story and an interactive activity. Min/Max: 4/12. (rf)

Code	Day	Date	Time	R/NR Fee
<b>Planting Day at Ackerman Park</b>				
<a href="#">123311</a>	F	9/17	10-11am	\$10/\$15 ●
<b>Grasshoppers at Churchill Park</b>				
<a href="#">123842</a>	F	10/15	10-11am	\$10/\$15 ●

## OAKtober Tree Walk

Ages: All

Celebrate OAKtober! Join us on a walk around the lake and park. You will learn about local trees, how to identify them, and help us label several species with informational signs that explain many of their benefits. Location: Lake Ellyn Park. Min/Max: 4/10 families. (rf)

Code	Day	Date	Time	Fee
<a href="#">123845</a>	Sa	10/16	9-10am	Free w/registration ●

## Free Guided Nature Walks

Ages: 18 and up

These casual nature walks will highlight seasonal nature happenings and held rain or shine. For Maryknoll Park, meet at the first pavilion as you enter the park. For Panfish Park, please park in the lot behind the police station at 65 S Park Blvd. For Lambert Lake, please meet in the parking lot south of Public Works on Lambert Road. For Churchill Woods Forest Preserve, please meet in the eastern lot. (rf)

Day	Date	Time	Location	Fee
F	9/10	9-10am	Maryknoll Park	Free
F	10/8	9-10am	Panfish Park	Free
F	11/12	9-10am	Lambert Lake	Free
F	12/10	9-10am	Churchill Woods Forest Preserve	Free

## VOLUNTEER OPPORTUNITY

### Restoration Workdays

Best suited for ages 8+.

Help clear invasive plants, cut and stack brush, plant native flowers, trees and seeds, maintain trails, and more. Please bring your own work gloves and water bottle. We will follow current health guidelines. Please contact Renae at [rfrigo@gepark.org](mailto:rfrigo@gepark.org) if you have questions. Free.

Day	Date	Time	Location
Sa	9/11	9-11am	Churchill Park
Sa	10/9	9-11am	GE Manor Park
Sa	11/13	9-11am	Maryknoll Park
Sa	12/11	9-11am	Churchill Park



# Dance Academy

**Location: Spring Avenue Recreation Center**

## Parent/Tot Dance

Designed for our littlest dancers, this class introduces basic ballet, coordination, and gross motor skills through creative movement and interactive songs with a parent present. Ballet shoes are optional for parent/caregiver.

## Tiny Tot Dance

Your child will learn dance concepts and develop rhythm, coordination, and balance while moving and grooving to music and using creative props to inspire imagination. Parents/guardians are required to stay within the building for the duration of each class, no exceptions. Children must be able to attend class without a parent present.

## Creative Movement

This class develops motor skills, balance, cognitive awareness, creativity, rhythm, musicality, and self-esteem. Parents/guardians are required to stay within the building for the duration of each class, no exceptions. Children must be able to attend class without a parent present.

## Creative Hip Hop

This class develops creativity and musicality with a special focus on the rhythm, muscle memory, and coordination found in this urban dance style. Parents/guardians are required to stay within the building for

the duration of each class, no exceptions. Children must be able to attend class without a parent present.

## Pre-Ballet/Tap

This class is divided into two units: ballet and tap. Your child will be taught core concepts, age-appropriate technique, and vocabulary in these two genres of dance.

## Intro Ballet/Jazz

Your child will learn core concepts from both ballet and jazz. Both techniques will be taught in class at an age-appropriate level.

## Ballet 1

This class will build a solid foundation of ballet terms and technique. Your child will learn to have musicality within their movement, and gain strength. We will focus on core ballet concepts and build upon their previous dance knowledge.

## Ballet 2

This class will use the foundations built in Ballet 1 but continue to grow and expand knowledge and ballet technique. Your child will learn more complex movement, and skills.

## Jazz 1

This class is a focus on jazz technique and style, and growing confidence in movement. Your child will learn basic technique to rhythmic songs, while also finding their own way of moving.

## Tap 1

Your child will be taught core concepts, age-appropriate technique, and vocabulary in tap.

## Hip Hop 1

Your child will learn the basics of hip hop in this class. This high energy style of dance encompasses many different urban dance styles and focuses on rhythm, muscle memory, and coordination. Gym shoes or sneakers are usually worn.

## Theatrical

This class focuses on “performance” based dance. This class is a great way to learn to be more expressive on stage while dancing to songs from great Broadway musicals. (cs)

## Sept/Oct Instructional Classes

Code	Class	Day	Age	Dates	Time	# of Classes	Min/Max	R/NR Fee	
<a href="#">123141</a>	Creative Movement	M	3-4	9/13-10/18	4:30-5:15pm	Six	5/12	\$60/\$90	●
<a href="#">123149</a>	Pre-Ballet/Tap	M	4-5	9/13-10/18	5:20-6:05pm	Six	5/12	\$60/\$90	●
<a href="#">123167</a>	Ballet 1	M	5-6	9/13-10/18	6:10-6:55pm	Six	5/12	\$60/\$90	●
<a href="#">123172</a>	Ballet 2	M	7 & up	9/13-10/18	7-8pm	Six	5/12	\$80/\$120	●
<a href="#">123157</a>	Parent/Tot	Tu	18-36 mo.	9/14-10/19	4:10-4:40pm	Six	5/12	\$40/\$60	●
<a href="#">123161</a>	Tiny Tot	Tu	2.5-3	9/14-10/19	4:45-5:15pm	Six	5/8	\$40/\$60	●
<a href="#">123188</a>	Tap 1	Tu	5-6	9/14-10/19	5:20-6:05pm	Six	5/12	\$60/\$90	●
<a href="#">123202</a>	Theatrical	Tu	6 & up	9/14-10/19	6:10-6:55pm	Six	5/12	\$60/\$90	●
<a href="#">123175</a>	Jazz 1	Tu	6 & up	9/14-10/19	7-8pm	Six	5/12	\$80/\$120	●
<a href="#">123158</a>	Parent/Tot	W	18-36 mo.	9/15-10/20	9:15-9:45am	Six	5/12	\$40/\$60	●
<a href="#">123162</a>	Tiny Tot	W	2.5-3	9/15-10/20	9:55-10:25am	Six	4/8	\$40/\$60	●
<a href="#">123143</a>	Creative Movement	W	3-4	9/15-10/20	10:30-11:15am	Six	5/12	\$60/\$90	●
<a href="#">123150</a>	Pre-Ballet/Tap	W	4-5	9/15-10/20	11:20am-12:05pm	Six	5/12	\$60/\$90	●
<a href="#">123222</a>	Creative Hip Hop	W	3-4	9/15-10/20	4:30-5:15pm	Six	5/12	\$60/\$90	●
<a href="#">123234</a>	Intro Ballet/Jazz	W	4-5	9/15-10/20	5:20-6:05pm	Six	5/12	\$60/\$90	●
<a href="#">123193</a>	Hip Hop 1	W	6 & up	9/15-10/20	6:10-6:55pm	Six	5/12	\$60/\$90	●
<a href="#">123168</a>	Ballet 1	W	5-6	9/15-10/20	7-7:45pm	Six	5/12	\$60/\$90	●
<a href="#">123153</a>	Pre-Ballet/Tap	Th	4-5	9/16-10/21	9:30-10:15am	Six	5/12	\$60/\$90	●
<a href="#">123144</a>	Creative Movement	Th	3-4	9/16-10/21	10:20-11:05am	Six	5/12	\$60/\$90	●
<a href="#">123154</a>	Pre-Ballet/Tap	Sa	4-5	9/18-10/23	9-9:45am	Six	5/12	\$60/\$90	●
<a href="#">123171</a>	Ballet 1	Sa	5-6	9/18-10/23	9:50-10:35am	Six	5/12	\$60/\$90	●
<a href="#">123147</a>	Creative Movement	Sa	3-4	9/18-10/23	10:40-11:25am	Six	5/12	\$60/\$90	●
<a href="#">123165</a>	Tiny Tot	Sa	2.5-3	9/18-10/23	11:30am-12pm	Six	5/8	\$40/\$60	●

## Nov/Dec Instructional Classes

No class 11/22-11/27

Code	Class	Day	Age	Dates	Time	# of Classes	Min/Max	R/NR Fee	
<a href="#">123803</a>	Creative Movement	M	3-4	11/1-12/13	4:30-5:15pm	Six	5/12	\$60/\$90	●
<a href="#">123804</a>	Pre-Ballet/Tap	M	4-5	11/1-12/13	5:20-6:05pm	Six	5/12	\$60/\$90	●
<a href="#">123805</a>	Ballet 1	M	5-6	11/1-12/13	6:10-6:55pm	Six	5/12	\$60/\$90	●
<a href="#">123806</a>	Ballet 2	M	7+	11/1-12/13	7-8pm	Six	5/12	\$80/\$120	●
<a href="#">123807</a>	Parent/Tot	Tu	18-36 mo.	11/2-12/14	4:10-4:40pm	Six	5/12	\$40/\$60	●
<a href="#">123808</a>	Tiny Tot	Tu	2.5-3	11/2-12/14	4:45-5:15pm	Six	5/8	\$40/\$60	●
<a href="#">123809</a>	Tap 1	Tu	5-6	11/2-12/14	5:20-6:05pm	Six	5/12	\$60/\$90	●
<a href="#">123810</a>	Theatrical	Tu	6+	11/2-12/14	6:10-6:55pm	Six	5/12	\$60/\$90	●
<a href="#">123811</a>	Jazz 1	Tu	6+	11/2-12/14	7-8pm	Six	5/12	\$80/\$120	●

Continued on the next page »

## Nov/Dec Instructional Classes Continued

No class 11/22-11/27

Code	Class	Day	Age	Dates	Time	# of Classes	Min/Max	R/NR Fee	
<a href="#">123812</a>	Parent/Tot	W	18-36 mo.	11/3-12/15	9:15-9:45am	Six	5/12	\$40/\$60	●
<a href="#">123813</a>	Tiny Tot	W	2.5-3	11/3-12/15	9:55-10:25am	Six	4/8	\$40/\$60	●
<a href="#">123814</a>	Creative Movement	W	3-4	11/3-12/15	10:30-11:15am	Six	5/12	\$60/\$90	●
<a href="#">123815</a>	Pre-Ballet/Tap	W	4-5	11/3-12/15	11:20am-12:05pm	Six	5/12	\$60/\$90	●
<a href="#">123816</a>	Creative Hip Hop	W	3-4	11/3-12/15	4:30-5:15pm	Six	5/12	\$60/\$90	●
<a href="#">123817</a>	Intro Ballet/Jazz	W	4-5	11/3-12/15	5:20-6:05pm	Six	5/12	\$60/\$90	●
<a href="#">123818</a>	Hip Hop 1	W	6+	11/3-12/15	6:10-6:55pm	Six	5/12	\$60/\$90	●
<a href="#">123819</a>	Ballet 1	W	5-6	11/3-12/15	7-7:45pm	Six	5/12	\$60/\$90	●
<a href="#">123820</a>	Pre-Ballet/Tap	Th	4-5	11/4-12/16	9:30-10:15am	Six	5/12	\$60/\$90	●
<a href="#">123821</a>	Creative Movement	Th	3-4	11/4-12/16	10:20-11:05am	Six	5/12	\$60/\$90	●
<a href="#">123822</a>	Pre-Ballet/Tap	Sa	4-5	11/6-12/18	9-9:45am	Six	5/12	\$60/\$90	●
<a href="#">123823</a>	Ballet 1	Sa	5-6	11/6-12/18	9:50-10:35am	Six	5/12	\$60/\$90	●
<a href="#">123824</a>	Creative Movement	Sa	3-4	11/6-12/18	10:40-11:25am	Six	5/12	\$60/\$90	●
<a href="#">123825</a>	Tiny Tot	Sa	2.5-3	11/6-12/18	11:30am-12pm	Six	5/8	\$40/\$60	●



## Private Tap Dance Lessons

Ages: All

Take tap dance lessons at the Glen Ellyn Park District with James Demeny. There's no better way to learn a skill than through private, individualized instruction, and tap dance is no exception. When learning such a colorful and historic art form, it can be difficult to achieve your specific goals in your average tap class. Whether you're looking to learn improvisation and jazz, musical theatre tap dance, historical choreography and the choreography process, technique, or if you're just putting on your shoes for the first time and you're not sure, private tap dance lessons will give you the time and attention you need on your tap dance journey. Lessons take place at Spring Avenue Recreation Center.

Email [cshingler@gepark.org](mailto:cshingler@gepark.org) to book your private lesson. (cs)

**R/NR Fee:** \$58/\$87 per 1-hour lesson

AUTUMN 2021 • 48

● Registration open now ● Registration opens at 9am August 28



# Sports

## Who To Contact

**Brad Thomas (bt)**

[bthomas@gepark.org](mailto:bthomas@gepark.org)

(630) 942-7288

**Clint Babicz (cb)**

[cbabicz@gepark.org](mailto:cbabicz@gepark.org)

(630) 942-7290

**Christine Hartnett (ch)**

[chartnett@gepark.org](mailto:chartnett@gepark.org)

(630) 942-7268

**Stacey Lim (sl)**

[slim@gepark.org](mailto:slim@gepark.org)

(630) 942-7275



## Ackerman Parent & Tot Sports

Ages: 3-5 with adult

Parents play an integral part in helping their tots develop basic sports movement and motor skills. Motor skills activities focus on hand-eye and hand-foot coordination. Sports equipment and instruction are provided to help guide your child through an introduction to organized sports. Parent or caregiver participation is required.

Location: Ackerman SFC. Min/Max: 5/25. (sl)

Code	Day	Date	Time	R/NR Fee
<a href="#">122446</a>	Th	9/9-9/30	9-9:45am	\$40/\$55 ●
<a href="#">122450</a>	Sa	9/11-9/25	9-9:45am	\$30/\$45 ●
<a href="#">122447</a>	Th	10/7-10/28	9-9:45am	\$40/\$55 ●
<a href="#">122451</a>	Sa	10/9-10/30	9-9:45am	\$40/\$55 ●
<a href="#">122448</a>	Th	11/4-11/18	9-9:45am	\$30/\$45 ●
<a href="#">122452</a>	Sa	11/13-11/27	9-9:45am	\$30/\$45 ●
<a href="#">122449</a>	Th	12/2-12/23	9-9:45am	\$40/\$55 ●

## Ackerman Tot T-Ball

Ages: 3-6

This class will introduce baseball fundamentals and game play including batting, catching, throwing, and base running and will include the principals of good sportsmanship, in a non-competitive and fun atmosphere. Location: Ackerman SFC. Min/Max: 5/25. (sl)

Code	Day	Date	Time	R/NR Fee
<a href="#">122453</a>	Th	9/9-9/30	10-10:45am	\$40/\$55 ●
<a href="#">122457</a>	Sa	9/11-9/25	11:15am-12pm	\$30/\$45 ●
<a href="#">122454</a>	Th	10/7-10/28	10-10:45am	\$40/\$55 ●
<a href="#">122458</a>	Sa	10/9-10/30	11:15am-12pm	\$40/\$55 ●
<a href="#">122455</a>	Th	11/4-11/18	10-10:45am	\$40/\$55 ●
<a href="#">122459</a>	Sa	11/13-11/27	11:15am-12pm	\$30/\$45 ●
<a href="#">122456</a>	Th	12/2-12/23	10-10:45am	\$40/\$55 ●

## Ackerman Sports and More

Ages: 3-6

Children are introduced to the fundamentals of different sports such as basketball, soccer, flag football, kickball, and other group games and activities. This is the first step in learning the core skills, rules, and team tactics for each sport. Classes focus on both skill work and game play each week. Location: Ackerman SFC. Min/Max: 5/25. (sl)

Code	Day	Date	Time	R/NR Fee
<a href="#">122948</a>	Th	9/9-9/30	11-11:45am	\$40/\$55 ●
<a href="#">123721</a>	Th	10/7-10/28	11-11:45am	\$40/\$55 ●
<a href="#">123722</a>	Th	11/4-11/18	11-11:45am	\$30/\$45 ●
<a href="#">123723</a>	Th	12/2-12/23	11-11:45am	\$40/\$55 ●

## ALL STAR SPORTS

### Super Sports

Ages: 3-6

We teach little superstars the importance of teamwork and sportsmanship, while attempting to spark an interest in playing a variety of sports. Sports covered will be favorites such as basketball, hockey, soccer, baseball, football, and many more. Location: Main Street Recreation Center.

Min/Max: 5/12. No class 11/23-11/26. (ch)

Code	Age	Day	Date	Time	R/NR Fee
<a href="#">122787</a>	3-4	Tu	8/31-10/19	11:15am-12pm	\$104/\$156 ●
<a href="#">122788</a>	3-4	Th	9/2-10/21	10-10:45am	\$104/\$156 ●
<a href="#">122789</a>	4-6	Th	9/2-10/21	10:45-11:45am	\$104/\$156 ●
<a href="#">122790</a>	4-6	F	9/3-10/22	1-2pm	\$104/\$156 ●
<a href="#">122791</a>	3-4	F	9/3-10/22	2-2:45pm	\$104/\$156 ●
<a href="#">123648</a>	3-4	Th	10/28-12/16	10-10:45am	\$91/\$136 ●
<a href="#">123649</a>	4-6	Th	10/28-12/16	10:45-11:45am	\$91/\$136 ●
<a href="#">123650</a>	4-6	F	10/29-12/17	1:15pm-2:15pm	\$91/\$136 ●
<a href="#">123651</a>	3-4	F	10/29-12/17	2:15pm-3pm	\$91/\$136 ●
<a href="#">123646</a>	3-4	Tu	11/2-12/14	3:45-4:30pm	\$78/\$117 ●
<a href="#">123647</a>	4-6	Tu	11/2-12/14	4:30-5:30pm	\$78/\$117 ●

## ALL STAR SPORTS

### Parent/Tot Sports

Ages: 2-3 with adult

This program gives you and your child the opportunity to bond and have fun together while learning a variety of sports. This class is great for simple motor skills such as: catching, throwing, batting, shooting, passing, and anything that involves hand-eye coordination. Parents participate with their child as we play soccer, basketball, hockey, t-ball, and many other sports. Location: Main Street Recreation Center. Min/Max: 5/12. No class 11/24, 11/27. (ch)

Code	Day	Date	Time	R/NR Fee
<a href="#">122804</a>	W	9/1-10/20	9:15-10am	\$104/\$156 ●
<a href="#">122805</a>	Sa	WAITLIST		\$104/\$156 ●
<a href="#">123653</a>	Sa	10/30-12/18	9:15am-10am	\$91/\$136 ●
<a href="#">123652</a>	W	11/3-12/15	9:15am-10am	\$78/\$117 ●

## ALL STAR SPORTS

### Basketball

Ages: 3-7

This program will introduce your children to the game of basketball. Basic skills of dribbling, passing, shooting, and defense will be taught. Games will also be played to show the importance of teamwork in game situations. Basketball 2 is the next level of this class and will build upon the basic skills learned in the Basketball class. Location: Main Street Recreation Center. Min/Max: 5/12. No class 11/23-11/26. (ch)

Code	Age	Day	Date	Time	R/NR Fee
<b>Basketball</b>					
<a href="#">122862</a>	3-4	Tu	8/31-10/19	9:15-10am	\$104/\$156 ●
<a href="#">122863</a>	4-6	Tu	8/31-10/19	10-11am	\$104/\$156 ●
<a href="#">122864</a>	3-5	F	9/3-10/22	9:15-10am	\$104/\$156 ●
<a href="#">123657</a>	5-7	Th	10/28-12/16	5-6pm	\$91/\$136 ●
<a href="#">123658</a>	3-5	F	10/29-12/17	9:15-10am	\$91/\$136 ●
<a href="#">123659</a>	4-6	F	10/29-12/17	10-11am	\$91/\$136 ●
<a href="#">123654</a>	3-4	Tu	11/2-12/14	9:15-10am	\$78/\$117 ●
<a href="#">123655</a>	4-6	Tu	11/2-12/14	10-11am	\$78/\$117 ●
<a href="#">123656</a>	4-5	W	11/3-12/15	4-4:45pm	\$78/\$117 ●

#### Basketball 2

<a href="#">122865</a>	5-7	F	9/3-10/22	10-11am	\$104/\$156 ●
<a href="#">123661</a>	7-10	Th	10/28-12/16	6-7pm	\$91/\$136 ●
<a href="#">123660</a>	6-7	W	11/3-12/15	4:45-5:45pm	\$78/\$117 ●
<a href="#">123662</a>	8-10	W	11/3-12/15	5:45-6:45pm	\$78/\$117 ●

## ALL STAR SPORTS

### T-Ball & Baseball

Ages: 3-10

We cover the basics of baseball in a fun and safe environment where no one stands around. We teach throwing, catching, hitting, fielding, running the bases, and how to play the game. Games are played every week. Baseball is a continuation of the T-ball class. Children who have been in the T-ball class more than once are encouraged to take the baseball class to improve on baseball skills. Participants must bring their own glove. Location: Main Street Recreation Center. Min/Max: 5/12. No class 11/24, 11/26, 11/27. (ch)

Code	Age	Day	Date	Time	R/NR Fee
<b>T-Ball</b>					
<a href="#">122868</a>	3-4	Tu	8/31-10/19	3-3:45pm	\$104/\$156 ●
<a href="#">122869</a>	5-7	Tu	WAITLIST	pm	\$104/\$156 ●
<a href="#">122870</a>	3-4	W	9/1-10/20	10-10:45am	\$104/\$156 ●
<a href="#">122871</a>	4-6	W	9/1-10/20	10:45-11:45am	\$104/\$156 ●
<a href="#">122872</a>	3-4	F	9/3-10/22	2:45-3:30pm	\$104/\$156 ●
<a href="#">122873</a>	3-4	Sa	9/4-10/23	10:45-11:30am	\$104/\$156 ●
<a href="#">122874</a>	4-6	Sa	WAITLIST	:30pm	\$104/\$156 ●
<a href="#">123665</a>	3-4	F	10/29-12/17	3-3:45pm	\$91/\$136 ●
<a href="#">123666</a>	3-4	Sa	10/30-12/18	10-10:45am	\$91/\$136 ●
<a href="#">123663</a>	3-4	W	11/3-12/15	10-10:45am	\$78/\$117 ●
<a href="#">123664</a>	4-6	W	11/3-12/15	10:45-11:45am	\$78/\$117 ●

#### Baseball

<a href="#">122879</a>	7-10	W	9/1-10/20	6-7pm	\$104/\$156 ●
------------------------	------	---	-----------	-------	---------------

## ALL STAR SPORTS

### Floor Hockey

Ages: 4-7

Learn and play the fastest game in the world. This action-packed class emphasizes the importance of teamwork and sportsmanship, passing, shooting, and stick handling before the skates go on. Participants must bring a bike helmet and gloves. Shin, knee, and elbow pads are optional. Location: Main Street Recreation Center. Min/Max: 5/12. No class 11/23, 11/25. (ch)

Code	Age	Day	Date	Time	R/NR Fee
<a href="#">122880</a>	4-5	W	9/1-10/20	4-4:45pm	\$104/\$156 ●
<a href="#">122881</a>	6-7	W	9/1-10/20	4:45-5:45pm	\$104/\$156 ●
<a href="#">123668</a>	4-5	Th	10/28-12/16	3:15-4pm	\$91/\$136 ●
<a href="#">123669</a>	5-7	Th	10/28-12/16	4-5pm	\$91/\$136 ●
<a href="#">123667</a>	5-7	Tu	11/2-12/14	5:30-6:30pm	\$78/\$117 ●



## ALL STAR SPORTS

### Soccer

Ages: 3-7

Children learn the basics of soccer in a fun, exciting way. Dribbling, passing, and shooting are covered through fun games that keep everyone moving. This class is great for coordination and self-esteem. Location: Main Street Recreation Center. Min/Max: 5/12. No class 11/23-11/26. (ch)

Code	Age	Day	Date	Time	R/NR Fee
<a href="#">122882</a>	3-4	Tu	WAITLIST		\$104/\$156 ●
<a href="#">122883</a>	5-7	Tu	8/31-10/19	5:30-6:30pm	\$104/\$156 ●
<a href="#">122884</a>	3-4	Th	9/2-10/21	11:45am-12:30pm	\$104/\$156 ●
<a href="#">122885</a>	3-5	Th	WAITLIST		\$104/\$156 ●
<a href="#">122887</a>	5-7	Th	9/2-10/21	5:15-6:15pm	\$104/\$156 ●
<a href="#">122886</a>	3-4	Sa	WAITLIST		\$104/\$156 ●
<a href="#">123672</a>	3-4	Th	10/28-12/16	11:45am-12:30pm	\$91/\$136 ●
<a href="#">123673</a>	3-4	Sa	10/30-12/18	10:45-11:30am	\$91/\$136 ●
<a href="#">123674</a>	4-6	Sa	10/30-12/18	11:30am-12:30pm	\$91/\$136 ●
<a href="#">123670</a>	3-4	Tu	11/2-12/14	11-11:45am	\$78/\$117 ●
<a href="#">123671</a>	4-6	Tu	11/2-12/14	11:45am-12:45pm	\$78/\$117 ●

## FUTURE PROS

### Parent/Tot Lakers Soccer

Ages: 2-3 with adult

This program provides the opportunity for you and your child to play soccer together. This class will work on simple motor skills such as dribbling, passing, and shooting. Parents participate with their child. Each participant receives a soccer ball. If a class is canceled, make-ups will be done at the end of each session, if possible. Location: Ackerman SFC. Min/Max: 8/20. (bt)

Code	Day	Date	Time	R/NR Fee
<a href="#">123176</a>	F	9/10-10/29	9:30-10:15am	\$80/\$120 ●



## FUTURE PROS

### Little Lakers Soccer

Ages: 4-6

Introduce your little one to the world's most popular sport. Your child will learn not only basic skills, but also a lifetime love for soccer. Each participant receives a soccer ball. If a class is canceled, make-ups will be done at the end of each session, if possible. Location: Ackerman SFC. Min/Max: 8/20. (bt)

Code	Day	Date	Time	R/NR Fee
<a href="#">123177</a>	F	9/10-10/29	10:30-11:15am	\$80/\$120 ●

## FUTURE PROS

### Junior Lakers Soccer

Ages: 4-11

Weekly clinics focus on building individual and team soccer skills. Instruction, drills, and games will focus on dribbling, passing, shooting, defending, and offensive attacking skills. The clinics will be run by Future Pros professional trainers. Groups will be divided for skill-level-appropriate training each week. Players are required to bring their own ball, shoes, shin guards, and water for each class. Location: Ackerman SFC. Min/Max: 8/20. (bt)

Code	Age	Day	Date	Time	R/NR Fee
<a href="#">123179</a>	4-6	F	9/10-10/29	4-5pm	\$80/\$120 ●
<a href="#">123178</a>	7-11	F	9/10-10/29	5-6pm	\$80/\$120 ●

## Winter House Soccer League

Ages: 5-11

This is a great opportunity for boys and girls to keep their soccer skills fresh during winter. Each week, players will work on a particular skill and then scrimmage at the end of class. This league is instructed by Future Pros trainers, the same trainers used by the Glen Ellyn Lakers travel teams. Each player is required to bring their own ball, shoes, shin guards, and water for each class. Location: Ackerman SFC. Min/Max: 10/50. No class 11/25. (bt)

Code	Age	Day	Date	Time	R/NR Fee
<a href="#">123180</a>	5-7	Th	11/4-12/16	5-6pm	\$100/\$150 ●
<a href="#">123181</a>	8-11	Th	11/4-12/16	6-7:30pm	\$125/\$190 ●

## Chicago Fire Soccer Clinics

Ages: 4-14

Chicago Fire FC After School programs offer a weekly, structured experience, directed by their professional coaching staff. Each player is required to bring their own ball, cleats, shin guards, and water for each class. Location: Ackerman Park. Min/Max: 10/20. (bt)

Code	Age	Day	Date	Time	R/NR Fee
<a href="#">123717</a>	4-6	Tu	9/7-10/12	4-5pm	\$100/\$150 ●
<a href="#">123718</a>	7-9	Tu	9/7-10/12	5-6pm	\$100/\$150 ●
<a href="#">123719</a>	10-14	Tu	9/7-10/12	6-7pm	\$100/\$150 ●

## GE LAKERS & MIDWEST FC

# Supplemental Travel Soccer Tryouts

Ages: 2014-2004 Birth Year

Supplemental travel soccer tryouts will be held to add additional players to existing Glen Ellyn Lakers and Midwest FC teams or create new teams if numbers allow. Lakers tryouts will be held at Ackerman SFC and Midwest FC will be held outside at Ackerman Park. (bt)

Code	Age	Day	Date	Time
<a href="#">123186</a>	HS Boys	Th	10/14	7:45-9:15pm ●
<a href="#">123185</a>	2014/2013	M	11/8	4-5pm ●
<a href="#">123183</a>	2012/2011	M	11/8	5-6pm ●
<a href="#">123184</a>	2010-2008	M	11/8	5-6pm ●





## Curling

Ages: 12-18

Windy City Curling Club (WCCC) will teach you how to throw a stone, sweep the ice, and basic strategy to get you started on your Olympic run. During the first week, game basics and safety will be covered with instruction both on and off the ice. The following weeks are reserved for scrimmage games. Players from WCCC will be on hand to lead games and provide game play strategy. No experience or skates required. Location: Windy City Curling Club, Villa Park. Min/Max: 6/24. (ch)

Code	Age	Day	Date	Time	R/NR Fee
<a href="#">123685</a>	12-14	Tu	9/14-10/5	5-6pm	\$100/\$115 ●
<a href="#">123686</a>	14-18	W	9/15-10/6	5-6pm	\$100/\$115 ●
<a href="#">123688</a>	12-14	Tu	10/19-11/9	5-6pm	\$100/\$115 ●
<a href="#">123687</a>	14-18	W	10/20-11/10	5-6pm	\$100/\$115 ●

## Softball Pitching Clinic

Ages: 8-17

Learn new techniques or sharpen skills during the offseason with Pitching Coach Scott Swords. Pitchers must supply their own catchers. Location: Ben Franklin Elementary. Min/Max: 2/6. No class 11/8 or 11/22. (cb)

Code	Day	Date	Time	Fee
<a href="#">123828</a>	M	10/18-12/6	6-6:45pm	\$80 ●
<a href="#">123829</a>	M	10/18-12/6	6:45-7:30pm	\$80 ●
<a href="#">123830</a>	M	10/18-12/6	7:30-8:15pm	\$80 ●
<a href="#">123831</a>	M	10/18-12/6	8:15-9pm	\$80 ●

## Skateboard Lessons

Ages: 5-13

Appropriate for beginning and intermediate levels: beginners learn how to start, stop, and turn, basic ramp riding, and tricks; intermediate skaters learn skills based on ability. Skaters must bring a drink & wear a helmet. Knee, elbow, and wrist guards strongly encouraged. Please email [fpteamskateboard@yahoo.com](mailto:fpteamskateboard@yahoo.com) about a correct skateboard for this class. Location: Newton Park. Min/Max: 4/10. (ch)

Code	Age	Day	Date	Time	Fee
<a href="#">122774</a>	5-7	Tu	9/7-9/28	4-5pm	\$85 ●
<a href="#">122775</a>	8-13	Tu	9/7-9/28	5-7pm	\$172 ●
<a href="#">122776</a>	5-7	W	9/8-9/29	4-5pm	\$85 ●
<a href="#">122777</a>	8-13	W	9/8-9/29	5-7pm	\$172 ●

## Youth Archery

Ages: 10-15

Certified Archery Instructor Jim Craig will teach the joy of archery in a fun, safe, and educational environment. Exciting drills and fun games will be implemented in this class. Recurve bows, blunt tipped arrows, and targets will be provided. Location: Main Street Recreation Center. Min/Max: 5/10. (ch)

Code	Day	Date	Time	R/NR Fee
<a href="#">123957</a>	M	11/1-11/22	4-5pm	\$48/\$55 ●

## Ackerman Sports & Fun Camp

Ages: 6-12

This camp emphasizes fun and wellness all while following social distancing. Participants will learn more about sports and partake in individual activities while still being part of a group setting including individual skill drills, arts and crafts, relay races and exercising. Participants are asked to bring a water bottle and hand sanitizer to camp each day. Face coverings are required during the duration of camp. Location: Ackerman SFC. Min/Max: 5/25. (sl)

Code	Day	Date	Time	R/NR Fee	
<a href="#">123757</a>	M-W	11/22-11/24	9am-12pm	\$50/\$65	●
<a href="#">123758</a>	M-W	11/22-11/24	12:30-3:30pm	\$50/\$65	●
<a href="#">123833</a>	M-W	12/20-12/22	9am-12pm	\$50/\$65	●
<a href="#">123834</a>	M-W	12/20-12/22	12:30-3:30pm	\$50/\$65	●
<a href="#">123836</a>	M-W	12/27-12/29	9am-12pm	\$50/\$65	●
<a href="#">123837</a>	M-W	12/27-12/29	12:30-3:30pm	\$50/\$65	●

## Fall Youth Tennis Classes

Fall Tennis classes are filled with fun games and drills designed to introduce new players to the sport and help develop the skills of more experienced players. Please bring a racquet to class or indicate on the registration form if you would like to purchase a junior-sized racquet for \$25. All ability levels welcome. Location: Sunset Park. Min/Max: 4/14. (bt)

Code	Day	Date	Time	R/NR Fee	
<b>Red Blast • Ages 4-6</b>					
<a href="#">123251</a>	M	9/20-10/11	4-5pm	\$110/\$150	●
<a href="#">123249</a>	W	9/22-10/13	4-5pm	\$110/\$150	●
<b>Orange Blast • Ages 7-8</b>					
<a href="#">123252</a>	M	9/20-10/11	5-6pm	\$110/\$150	●
<a href="#">123250</a>	W	9/22-10/13	5-6pm	\$110/\$150	●
<b>Green Blast • Ages 9-10</b>					
<a href="#">123247</a>	Tu	9/21-10/12	4-5pm	\$110/\$150	●
<a href="#">123253</a>	Th	9/23-10/14	4-5pm	\$110/\$150	●
<b>Junior Competitive • Grades 6-8</b>					
<a href="#">123248</a>	Tu	9/21-10/12	5-6pm	\$110/\$150	●
<a href="#">123254</a>	Th	9/23-10/14	5-6pm	\$110/\$150	●

## Youth Dodgeball Tournament

Grades: 3rd-8th

Join us for the inaugural Glen Ellyn Dodgeball Tournament. Brackets will be divided up based on age. Teams are guaranteed three matches followed by a championship game for the top two teams in each division. Registration is completed on a team basis, not individual. The team captain should register your team. Teams can have a maximum of 8 players as matches are played with six on the court. Location: Ackerman SFC. Min/Max: 4/6. (bt)

Code	Grade	Day	Date	Time	Fee	
<a href="#">123236</a>	3rd/4th	Su	10/24	10am-3pm	\$100/team	●
<a href="#">123238</a>	5th/6th	Su	10/24	10am-3pm	\$100/team	●
<a href="#">123239</a>	7th/8th	Su	10/24	10am-3pm	\$100/team	●



## Fall Youth Basketball League

Grades: 1st-8th

Teams will have a maximum of 10 players and will have one weekly practice and 5v5 games on Saturdays. Practices will be held at local schools. Games are played against Glen Ellyn and Lombard Park District teams. Games will be played at Ackerman SFC and in Lombard. (bt)

**Register by 9/1 • Practices begin week of 9/13  
Games begin 9/18 (no games 9/25) • Games end 10/30**

Code	Grade	R/NR Fee	
<a href="#">123195</a>	1st/2nd Boys	\$90/\$135	●
<a href="#">123196</a>	1st/2nd Girls	\$90/\$135	●
<a href="#">123197</a>	3rd/4th Boys	\$90/\$135	●
<a href="#">123199</a>	3rd/4th Girls	\$90/\$135	●
<a href="#">123200</a>	5th/6th Boys	\$90/\$135	●
<a href="#">123201</a>	5th/6th Girls	\$90/\$135	●
<a href="#">123203</a>	7th/8th Boys	\$90/\$135	●
<a href="#">123716</a>	7th/8th Girls	\$90/\$135	●

## Winter Youth Basketball League

Our philosophy is to provide a friendly atmosphere and to teach the rules and skills of basketball as well as good sportsmanship. The league is designed to ensure that all players have an equal opportunity to participate in games and practices no matter their skill level. Games and practices are held at Ackerman SFC and local schools depending on your volunteer coach's schedule and facility availability. All participants will receive a reversible jersey. If interested in becoming a volunteer coach, be sure to indicate that on your registration. (bt)

**Registration Deadline:** November 1

**Evaluations (3rd-8th Only):** November 13 (*Schedule TBD*)

**Practice Begins:** Week of January 3

**Games Begin:** January 8

**Games End:** March 12

### K-2ND GRADE

These leagues focus on the fundamentals of basketball. Practices and games are structured around skill development and having fun. All games are officiated in an instructional atmosphere. Players are placed on teams according to their schools. Player/coach requests are not accepted. Kindergarten will meet once per week only at the Main Street Recreation Center.

Code	Grade	R/NR Fee
<a href="#">123221</a>	Kindergarten Boys	\$85/\$125 ●
<a href="#">123223</a>	Kindergarten Girls	\$85/\$125 ●
<a href="#">123204</a>	1st Grade Boys	\$120/\$170 ●
<a href="#">123210</a>	1st Grade Girls	\$120/\$170 ●
<a href="#">123205</a>	2nd Grade Boys	\$120/\$170 ●
<a href="#">123211</a>	2nd Grade Girls	\$120/\$170 ●

### 3RD-4TH GRADE

These leagues introduce players to a more structured format. Players learn more of the team concept by focusing less on individual skills and more on teamwork. Players will be asked to attend an evaluation session and will be drafted to teams by coaches. Team will play a 7-game season and compete in a single elimination playoff at the end of the season.

Code	Grade	R/NR Fee
<a href="#">123206</a>	3rd Grade Boys	\$120/\$170 ●
<a href="#">123212</a>	3rd Grade Girls	\$120/\$170 ●
<a href="#">123207</a>	4th Grade Boys	\$120/\$170 ●
<a href="#">123213</a>	4th Grade Girls	\$120/\$170 ●

### 5TH-6TH GRADE

This league places more emphasis on the team as whole. This is accomplished by the introduction of set plays to increase the player's ability to adapt to game situations. Players will be asked to attend an evaluation session and will be drafted to teams by coaches. Team will play a 7-game season and compete in a single elimination playoff at the end of the season.

Code	Grade	R/NR Fee
<a href="#">123208</a>	5th/6th Grade Boys	\$120/\$170 ●
<a href="#">123214</a>	5th/6th Grade Girls	\$120/\$170 ●

### 7TH-8TH GRADE

This league takes all the elements that have been learned and tests all your skills. The program starts as a review of the knowledge and skills obtained throughout the years. Junior High athletes may participate but must be present at both the practices and games throughout the entire season. Players will be asked to attend an evaluation session and will be drafted to teams by coaches. Team will play a 7-game season and compete in a single elimination playoff at the end of the season. 7th/8th Grade Girls participate in an inter-village league with neighboring districts and will follow a slightly different schedule.

Code	Grade	R/NR Fee
<a href="#">123209</a>	7th/8th Grade Boys	\$120/\$170 ●
<a href="#">123215</a>	7th/8th Grade Girls	\$120/\$170 ●

### FREE WINTER YOUTH BASKETBALL LEAGUE CLINICS

Shake the dust off for the upcoming season. Clinics are free and only available to those enrolled in the Winter Youth Basketball League. Clinics are skill based and co-ed. Space is limited, and registration is required. Location: Ackerman SFC. Min/Max: 10/20. (bt)

Code	Grade	Day	Date	Time	Fee
<a href="#">123225</a>	1st/2nd	M	11/29	5-6pm	Free ●
<a href="#">123226</a>	1st/2nd	M	12/6	5-6pm	Free ●
<a href="#">123227</a>	1st/2nd	M	12/13	5-6pm	Free ●
<a href="#">123228</a>	3rd/4th	M	11/29	6-7pm	Free ●
<a href="#">123229</a>	3rd/4th	M	12/6	6-7pm	Free ●
<a href="#">123230</a>	3rd/4th	M	12/13	6-7pm	Free ●
<a href="#">123231</a>	5th-8th	M	11/29	7-8pm	Free ●
<a href="#">123232</a>	5th-8th	M	12/6	7-8pm	Free ●
<a href="#">123233</a>	5th-8th	M	12/13	7-8pm	Free ●





## Coach Faulkner's Girls Basketball Academy

Grades: 3rd-8th

This program is designed to enhance your daughter's basketball skills. This Academy is led by Kristi Faulkner and her coaching staff. Each week, participants will work on skill development during their practice day and then play 3v3 games incorporating those skills on their game days. All participants should bring their own basketball each week. Location: Ackerman SFC. Min/Max: 10/20. (bt)

Code	Grade	Day	Date	Time	R/NR Fee
<a href="#">123189</a>	3rd-5th	M	9/13-10/23	M: 4:30-5:30pm Sa: 1-2pm	\$250/\$300 ●
<a href="#">123190</a>	6th-8th	M	9/13-10/23	M: 5:30-6:30pm Sa: 1-2pm	\$250/\$300 ●

### BIG 3 SPORTS

## Boys Basketball Academy

Grades: 3rd-8th

This program is designed to enhance your son's basketball skills. This Academy is led by Big 3 Sports and their coaching staff. Each week, participants will work on skill development during their practice day and then play 3v3 games incorporating those skills on their game days. All participants should bring their own basketball each week. Location: Ackerman SFC. Min/Max: 10/20. (bt)

Code	Grade	Day	Date	Time	R/NR Fee
<a href="#">123191</a>	3rd-5th	Tu/Sa	9/14-10/23	Tu: 4:30-5:30pm Sa: 2-3pm	\$250/\$300 ●
<a href="#">123192</a>	6th-8th	Tu/Sa	9/14-10/23	Tu: 5:30-6:30pm Sa: 2-3pm	\$250/\$300 ●

### BIG 3 SPORTS

## Basketball Skill Drills Camp

Grades: 3rd-4th

Camp will be run by the Big 3 Coaching staff, which includes standout high school, college, and former professional players. Participants will learn and work on basic dribbling, shooting, and passing drills while learning correct fundamentals in a FUN and team-oriented way. Location: Ackerman SFC. Min/Max: 10/25. (sl)

Code	Day	Date	Time	R/NR Fee
<a href="#">122442</a>	W	9/8-9/29	5-6pm	\$85/\$100 ●

## Chicago Bulls Basketball Clinics

Ages: 5-14

Join the Chicago Bulls coaching staff for one-day clinics to prepare your player for the Winter Youth Basketball season. Players will go through different skills/drills and will incorporate those into various games. Location: Ackerman SFC. Min/Max: 20/50. (bt)

Code	Age	Day	Date	Time	R/NR Fee
<a href="#">123771</a>	5-8	Su	12/5	9am-12pm	\$60/\$75 ●
<a href="#">123773</a>	9-14	Su	12/5	12-3pm	\$60/\$75 ●
<a href="#">123774</a>	5-8	Su	1/9	9am-12pm	\$60/\$75 ●
<a href="#">123775</a>	9-14	Su	1/9	12-3pm	\$60/\$75 ●
<a href="#">123776</a>	5-8	Su	2/6	9am-12pm	\$60/\$75 ●
<a href="#">123777</a>	9-14	Su	2/6	12-3pm	\$60/\$75 ●

## Fencing - Olympic Swordplay

Ages: 8-14

Learn the beginning skills and techniques of this unique sport without fighting. Fencing is an excellent sport for children and adults. It combines coordination of relaxed and fast moves, and critical thinking between attack and defensive strategies. Equipment not provided but can be rented from the Fencing Club. Please contact them at (630) 678-0035 prior to the start of class. Location: Main Street Recreation Center. Min/Max: 4/10. No class 9/4, 11/27. (ch)

Code	Day	Date	Time	R/NR Fee	
<a href="#">122896</a>	Sa	9/18-10/23	11:15am-12:10pm	\$90/\$135	●
<a href="#">123675</a>	Sa	10/30-12/11	11:15am-12:10pm	\$90/\$135	●

## Ackerman Youth Run for Fun

Ages: 9-13

An informal introduction to running for boys and girls of all fitness levels. Fun drills, games, and relay races create a positive atmosphere in a non-competitive environment. Location: Ackerman SFC. Min/Max: 5/25. (sl)

Code	Day	Date	Time	R/NR Fee	
<a href="#">123002</a>	Tu	9/14-9/28	4-5pm	\$30/\$45	●

## 2021 Lightning Running Club: Fall Season

Ages: 6-14

Kids will build endurance and learn proper running form while training to run between a 2K and 4K in this informal, co-ed running club. Runners will be grouped by age and/or ability level. The registration fee includes practice time, team t-shirt, home mock-meet and shirt, and entry to Away meets in October. Please indicate your child's t-shirt size when registering. Registration for this program will be capped based on the number of parent volunteers committed to run practices. If you are interested in becoming a volunteer coach please contact Christine Hartnett at [chartnett@gepark.org](mailto:chartnett@gepark.org). Min/Max: 10/30. (ch)

Code	Date	Day/Time/Location	R/NR Fee	
<a href="#">122778</a>	8/10-11/18	Tu: 6-6:45pm at Newton Sa: 8-8:45am at Maryknoll	\$90/\$100	●

## Ackerman Youth Flag Football

Ages: 6-10

Participants will be taught the fundamentals of football on the offensive and defensive sides of the ball and will go through a variety of drills, games, and contests to develop their skill set. Location: Ackerman SFC. Min/Max: 5/25. (sl)

Code	Day	Date	Time	R/NR Fee	
<a href="#">122460</a>	W	9/8-9/29	4-5pm	\$40/\$55	●
<a href="#">122461</a>	Th	9/9-9/30	4-5pm	\$40/\$55	●
<a href="#">122462</a>	Sa	9/11-9/25	10-11am	\$30/\$45	●
<a href="#">122465</a>	W	10/6-10/27	4-5pm	\$40/\$55	●
<a href="#">122466</a>	Th	10/7-10/28	4-5pm	\$40/\$55	●
<a href="#">122463</a>	Sa	10/9-10/30	10-11am	\$40/\$55	●
<a href="#">122467</a>	W	11/3-11/17	4-5pm	\$30/\$45	●
<a href="#">122468</a>	Th	11/4-11/18	3:30-4:30pm	\$30/\$45	●
<a href="#">122464</a>	Sa	11/13-11/27	10-11am	\$30/\$45	●

## Ackerman Youth Volleyball Skills

Grades: 5th-6th

Quick, fast, and touches on the ball with all state coach Christine Giunta Mayer. These one-hour sessions will focus on everything your child needs to know about the game prior and during their seasons. Location: Ackerman SFC. Min/Max: 10/25. (sl)

Code	Day	Date	Time	R/NR Fee	
<a href="#">123644</a>	Th	11/4-11/18	4-5pm	\$65/\$80	●
<a href="#">123645</a>	Th	12/2-12/16	4-5pm	\$65/\$80	●

## Ackerman Youth Floor Hockey

Ages: 6-10

Fast and fun, floor hockey develops speed, endurance, and coordination. Campers will work through a variety of drills, games, and competitions to develop their skills. Location: Ackerman SFC. Min/Max: 5/25. (sl)

Code	Day	Date	Time	R/NR Fee	
<a href="#">122443</a>	W	9/8-9/29	5-6pm	\$40/\$55	●
<a href="#">122445</a>	W	10/6-10/27	4-5pm	\$40/\$55	●



## Cyclones Volleyball Skills & Drills

Grades: 3rd-8th

One of the top volleyball clubs in the area, the Cyclones, will be teaching a fun and fundamental-style volleyball program to youth through tweens. With its unique combination of drills, competition and instruction, this program focuses on breaking volleyball down into different skill stations. These stations offer the most effective way to capitalize on skills, knowledge, drills, and techniques. No equipment needed. Min/Max: 10/35. (ch)

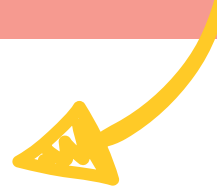
Code	Grade	Day	Date	Time	R/NR Fee
<b>Location: Ackerman SFC</b>					
<a href="#">122807</a>	3rd/4th		WAITLIST	10:00am-11:00am	\$60/\$90 ●
<a href="#">122808</a>	5th/6th		WAITLIST	10:00am-11:00am	\$60/\$90 ●
<a href="#">122809</a>	7th/8th	M	9/13-10/4	6:30-8pm	\$90/\$135 ●
<a href="#">123676</a>	3rd/4th	M	10/11-11/1	6-7:15pm	\$70/\$100 ●
<a href="#">123677</a>	5th/6th	M	10/11-11/1	6-7:15pm	\$70/\$100 ●
<a href="#">123678</a>	7th/8th	M	10/11-11/1	6-7:15pm	\$70/\$100 ●
<b>Location: College of DuPage</b>					
<a href="#">123679</a>	3rd/4th	M	11/8-11/29	6-7:15pm	\$70/\$100 ●
<a href="#">123680</a>	5th/6th	M	11/8-11/29	6-7:15pm	\$70/\$100 ●
<a href="#">123681</a>	7th/8th	M	11/8-11/29	6-7:15pm	\$70/\$100 ●

## Cyclones Volleyball Camp

Grades: 3rd-8th

The area's top club team, the Cyclones, will teach students the fundamentals of passing, setting, and spiking. The lesson plan directs the use of self-mastery training that helps each student reach a new level in preparation for the upcoming Cyclones Spring League. Location: Ackerman SFC. Min/Max: 10/24.(ch)

Code	Day	Date	Time	R/NR Fee
<b>Grades 3-5</b>				
<a href="#">123960</a>	M-Tu	12/20-12/21	11am-12:30pm	\$45/\$65 ●
<b>Grades 6-8</b>				
<a href="#">123961</a>	M-Tu	12/20-12/21	12:30-2:30pm	\$60/\$90 ●



## RISE Field Hockey

Grades: 1st-8th

Glen Ellyn Field Hockey now teams up with RISE Field Hockey! From beginner to college bound athletes, RISE Field Hockey programs come to Glen Ellyn to help you improve, learn and fall in love with the game of Field Hockey! Opportunities for additional higher-level travel team experiences will be available. (ch)

### RECREATIONAL CLASSES

Our Fall Recreational program will work on basic skills of the game of field hockey, and we will play small sided games and scrimmages throughout the season. Classes are once a week at Ackerman SFC. Athletes will receive a reversible pinny for practice, and will need a stick, mouthguard, and shin guards.

Code	Grade	Day	Date	Time	Fee
<a href="#">123380</a>	1st-4th	Th	9/9-10/21	5:30-6:30pm	\$84 ●
<a href="#">123381</a>	5th-8th	Th	9/9-10/21	6:30-8pm	\$155 ●

### FALL RECREATIONAL LEAGUE

Join the first recreational field hockey league in the area. After registration ends, players will be assigned a team and will compete against teams from Glen Ellyn and the surrounding Chicagoland area. Playdays will be round robin format and each team will play 1-2 games per meeting. Teams and game schedule will be released by 9/14. Team shirts will be provided at the first meeting date. Game location will be Oak Park River Forest High School. Athletes will need a stick, mouth guard, and shin guards. Cleats or turf shoes are recommended. RISE equipment packages are available for purchase. For more information, visit [www.risefieldhockey.com](http://www.risefieldhockey.com). No Playday 10/10.

#### Register by 9/9

Code	Grade	Day	Date	Fee
<a href="#">123487</a>	1st/2nd	Su	9/19-10/17	\$30 ●
<a href="#">123488</a>	3rd/4th	Su	9/19-10/17	\$30 ●
<a href="#">123489</a>	5th/6th	Su	9/19-10/17	\$50 ●
<a href="#">123490</a>	7th/8th	Su	9/19-10/17	\$50 ●

## Girls' Fall Lacrosse

Grades: 1st-4th

After a successful spring for Glen Ellyn's first girls' lacrosse program, Jerry Considine, East Ave Lacrosse Co-Founder and Girls Varsity Lacrosse Coach at Glenbard West, and former and current Glenbard West players will provide instruction for players of all levels while creating a fun and welcoming environment. A stick, goggles, and a mouth guard are required. Location: Newton Park. Min/Max: 20/40. (cb)

Code	Grade	Day	Date	Time	Fee
<a href="#">123278</a>	PreK-K	Su	9/12-10/24	12-1pm	\$85 ●
<a href="#">123279</a>	1st-4th	Su	9/12-10/24	12-1pm	\$85 ●
<a href="#">123280</a>	5th-8th	Su	9/12-10/24	1-2:30pm	\$125 ●

## Bulldogs Boys' Fall Lacrosse

**Grades 1st-4th:** Learn the fundamentals required to play lacrosse. Players will learn the necessary skills for cradling, ground balls, passing, shooting, and catching. Players should bring their own sticks. No additional equipment is needed. Min/Max: 20/40. Location: Ackerman SFC. (cb)

**Grades 5th-8th:** Have some fun and keep your skills sharp with Fall Lacrosse. This program will be run in a pick-up game format. Coaches will divide the players into teams each week and act as coaching officials in the games. Full pads/equipment are required. Min/Max: 10/20. Location: Ackerman SFC. (cb)

Code	Grade	Day	Date	Time	Fee
<a href="#">123281</a>	1st-4th	WAITLIST		7:30pm	\$125 ●
<a href="#">123282</a>	5th/6th	M	9/13-10/25	7:30-8:30pm	\$125 ●
<a href="#">123283</a>	7th/8th	M	9/13-10/25	7:30-8:30pm	\$125 ●





# Adult Sports

## 46 & Older Basketball

Ages: 46 and up

Pick-up games are organized nightly, and participants should bring their own basketball. Pre-registration required. Location: Hadley Junior High. Min/Max: 10/50. No games 11/25, 12/23, 12/30. (bt)

Code	Day	Date	Time	R/NR Fee
<a href="#">123242</a>	Th	10/28-5/19	7:30-9:30pm	\$25/\$32 ●

## Men's Basketball League

Ages: 18 and up

Teams play an 8-game regular season followed by a single elimination postseason tournament for those teams that qualify. A first-come, first-serve policy will be followed. Email Brad at [bthomas@gepark.org](mailto:bthomas@gepark.org) for a copy of the league information packet. Location: Ackerman SFC. Min/Max: 4/10. No games 9/26. (bt)

**Register by 9/1**

Code	League	Date	R/NR Fee
<a href="#">123246</a>	Sunday AM Open	9/12-11/7	\$625/\$725 per team ●

## Adult Co-Ed Volleyball League

Ages: 18 and up

Teams play an 8-game regular season followed by a single elimination post-season tournament. Location: Ackerman SFC. Min/Max: 4/8. (sl)

**Register by 9/7**

Code	Day	Date	Time	R/NR Fee
<a href="#">123014</a>	F	9/10-11/12	8-10pm	\$545/\$645 ●

## FREE Adult Pickleball Clinic

Ages: 18 and up

Learn to play the fast and fun game of pickleball. Bring your paddle if you have one or you can borrow one of ours. Free juice and bagels will be provided for all players. Once you try it you will be hooked. Free, but registration required. Contact Mark Cunnington at [gepaddlepro@gmail.com](mailto:gepaddlepro@gmail.com) for more information. Location: Village Green Park. Min/Max: 8/20. (bt)

Code	Day	Date	Time	Fee
<a href="#">123260</a>	Sa		WAITLIST	Fee w/registration ●
<a href="#">123261</a>	Sa		WAITLIST	Fee w/registration ●

## Pickleball Start/Restart

Ages: 18 and up

Join us for Pickleball Start/Restart and learn the basic skills, grips, and strategies to the game. This is a great class for beginners. For those more experienced players, there is also an intermediate level class. Players are required to provide their own paddle. Location: Village Green Park. Min/Max: 4/12. (bt)

Code	Level	Day	Date	Time	R/NR Fee
<a href="#">123832</a>	Beg.	Th	9/23-10/28	10-11am	\$90/\$135 ●
<a href="#">123835</a>	Beg.	Th	9/23-10/28	5-6pm	\$90/\$135 ●
<a href="#">123949</a>	Int.	W	9/22-10/27	12-1pm	\$90/\$135 ●

## Pickleball In-House League

Ages: 18 and up

Our staff will provide basic instruction to players and place players on teams based on their skill levels. Players will work on various skills and drills the first two weeks and then play matches for the remainder of the season. Location: Village Green Park. Min/Max: 8/30. (bt)

Code	Day	Date	Time	R/NR Fee
<a href="#">123838</a>	W	9/22-10/27	1-3pm	\$125/\$175 ●



# Gymnastics Center

## *Jump, Flip & Tumble*

The Glen Ellyn Park District Gymnastics program offers classes for children 18 months to 14 years old. All classes are held at Spring Avenue Recreation Center, 185 Spring Avenue. Developmental and Tumbling 2 are advanced classes and gymnasts must possess certain skills to participate. Instructors reserve the right to move participants to a different class if they are not developmentally ready and space is available. No new registration will be taken after the second week of class.

### **ATTIRE & WHAT TO BRING:**

For safety and comfort, proper attire is mandatory for gymnastics participants; girls should wear a gymnastics leotard or shorts and t-shirt (no tights or jewelry). Boys should wear shorts or sweatpants and t-shirt. Bare feet are best. Please bring a water bottle to class; water fountains are unavailable.

### **Parent/Tot**

This fun-filled parent/tot play time program introduces your child to the exciting world of tumbling and gymnastics. Parent/Tot features tumbling and gymnastics equipment, balls, hoops, circles, and parachute play. Parent involvement is the key to this class. Please no siblings.

### **Tiny Tumblers**

This introductory gymnastics class helps develop gross motor skills and body awareness and teaches self-confidence while having fun. A variety of gymnastic and tumbling stations will be set up each week to introduce your gymnasts to the basic skills used in this sport. Children must be able to attend class without a parent present.

### **Preschool**

A variety of gymnastics and tumbling stations will be set up each week to introduce your gymnast to the basic skills used in this sport. Children must be able to attend class without a parent present.

### **Kindergarten**

This class was designed to help refine and develop the gross motor skills taught in previous classes. A higher skill level of gymnastics stations will be set up each week to increase strength, flexibility, and coordination.

### **Pre-Developmental**

The focus of this program will be on floor exercise, springboard skills, bars, and beam. Stretching and conditioning for muscle tone will be included. This is a beginner program.

### **Developmental (Advanced)**

This class is a continuation of the Pre-Developmental class. Your child will focus on Olympic events including beam, floor exercise, vault, and bars. Class will also include stretching, apparatus skills, and conditioning in a safe and controlled atmosphere. Participants must be able to perform cartwheels, round-offs, forward/backward rolls, and a bridge.

### **Tumbling 1**

No skills required. Start out learning the proper way to perform handstands, cartwheels, and more. Participants will build on their skills each session.

### **Tumbling 2 (Advanced)**

Participants should possess basic skills, such as cartwheel, round-off, forward/backward rolls, handstand, and bridge. (ch)

## Sept/Oct Classes

Code	Class	Day	Ages	Dates	Time	# of Classes	Min/Max	R/NR Fee
<a href="#">122811</a>	Parent/Tot	M	18-36 mo.	9/13-10/18	9-9:30am	Six	5/10	\$60/\$90 ●
<a href="#">122814</a>	Tiny Tumblers	M	3	9/13-10/18	9:45-10:15am	Six	3/6	\$60/\$90 ●
<a href="#">122813</a>	Preschool	M	4-5	WAITLIST	-10:30am	Six	3/6	\$72/\$108 ●
<a href="#">122810</a>	Kindergarten	M	5-6	9/13-10/18	10:45-11:30am	Six	5/12	\$72/\$108 ●
<a href="#">122812</a>	Preschool/Kindergarten	M	4-6	9/13-10/18	1:30-2:15pm	Six	5/12	\$72/\$108 ●
<a href="#">122817</a>	Preschool/Kindergarten	Tu	4-6	9/7-10/19	2:30-3:15pm	Seven	5/12	\$84/\$126 ●
<a href="#">122816</a>	Pre-Developmental	Tu	6-12	9/7-10/19	4:30-5:30pm	Seven	5/12	\$98/\$147 ●
<a href="#">122815</a>	Developmental*	Tu	8-12	9/7-10/19	5:45-6:45pm	Seven	5/12	\$98/\$147 ●
<a href="#">122899</a>	Parent/Tot	W	18-36	WAITLIST	9:45am	Seven	5/10	\$70/\$105 ●
<a href="#">122902</a>	Tiny Tumblers	W	3	9/8-10/20	10-10:30am	Seven	5/10	\$70/\$105 ●
<a href="#">122897</a>	Kindergarten	W	5-6	9/8-10/20	10:45-11:30am	Seven	5/12	\$84/\$126 ●
<a href="#">122898</a>	Kindergarten	W	5-6	9/8-10/20	4-4:45pm	Seven	5/12	\$84/\$126 ●
<a href="#">122901</a>	Preschool	W	4-5	9/8-10/20	5-5:45pm	Seven	5/12	\$84/\$126 ●
<a href="#">122900</a>	Preschool/Kindergarten	W	4-6	9/8-10/20	6-6:45pm	Seven	5/12	\$84/\$126 ●
<a href="#">122910</a>	Parent/Tot	Th	18-36	WAITLIST	9:45am	Seven	5/10	\$70/\$105 ●
<a href="#">122912</a>	Preschool	Th	4-5	9/9-10/21	10-10:45am	Seven	5/12	\$84/\$126 ●
<a href="#">122913</a>	Tiny Tumblers	Th	3	9/9-10/21	11-11:30am	Seven	5/10	\$70/\$105 ●
<a href="#">122911</a>	Pre-Developmental	Th	6-12	WAITLIST	m	Seven	5/12	\$98/\$147 ●
<a href="#">122914</a>	Developmental	Th	8-12	WAITLIST	6:15pm	Seven	5/12	\$98/\$147 ●
<a href="#">122915</a>	Tumbling 1	Th	7-14	WAITLIST	-7:15pm	Seven	3/6	\$84/\$126 ●
<a href="#">122916</a>	Tumbling 2	Th	7-14	WAITLIST	-7:30pm	Seven	3/6	\$98/\$147 ●
<a href="#">122922</a>	Parent/Tot	Sa	18-36	WAITLIST	30am	Seven	5/10	\$70/\$105 ●
<a href="#">122925</a>	Tiny Tumblers	Sa	3	WAITLIST	-10:15am	Seven	5/10	\$70/\$105 ●
<a href="#">122924</a>	Preschool	Sa	4-5	9/11-10/23	10:30-11:15am	Seven	5/12	\$84/\$126 ●
<a href="#">122926</a>	Kindergarten	Sa	5-6	WAITLIST	am-12:15pm	Seven	5/12	\$84/\$126 ●
<a href="#">122923</a>	Pre-Dev./Developmental	Sa	6-12	WAITLIST	0-1:30pm	Seven	3/6	\$98/\$147 ●
<a href="#">123500</a>	Developmental	Sa	8-12	WAITLIST	0-1:30pm	Seven	3/6	\$98/\$147 ●

\*Must possess required skills to participate in class. See class description for details.

## Nov/Dec Classes

No class 11/22-11/27

Code	Class	Day	Ages	Dates	Time	# of Classes	Min/Max	R/NR Fee
<a href="#">123690</a>	Parent/Tot	M	18-36 mo.	11/1-12/13	9-9:30am	Six	5/12	\$60/\$90 ●
<a href="#">123693</a>	Tiny Tumblers	M	3	11/1-12/13	9:45-10:15am	Six	3/6	\$60/\$90 ●
<a href="#">123692</a>	Preschool	M	4-5	11/1-12/13	9:45-10:30am	Six	3/6	\$72/\$108 ●
<a href="#">123689</a>	Kindergarten	M	5-6	11/1-12/13	10:45-11:30am	Six	5/12	\$72/\$108 ●
<a href="#">123691</a>	Preschool/Kindergarten	M	4-6	11/1-12/13	1:30-2:15pm	Six	5/12	\$72/\$108 ●
<a href="#">123696</a>	Preschool/Kindergarten	Tu	4-6	11/2-12/14	2:30-3:15pm	Six	5/12	\$72/\$108 ●

Continued on the next page »

## Nov/Dec Classes Continued

No class 11/22-11/27

Code	Class	Day	Ages	Dates	Time	# of Classes	Min/Max	R/NR Fee
<a href="#">123695</a>	Pre-Developmental	Tu	6-12	11/2-12/14	4:30-5:30pm	Six	5/12	\$84/\$126 ●
<a href="#">123694</a>	Developmental*	Tu	8-12	11/2-12/14	5:45-6:45pm	Six	5/12	\$84/\$126 ●
<a href="#">123698</a>	Parent/Tot	W	18-36 mo.	11/3-12/15	9:15-9:45am	Six	5/12	\$60/\$90 ●
<a href="#">123702</a>	Tiny Tumblers	W	3	11/3-12/15	10-10:30am	Six	5/10	\$60/\$90 ●
<a href="#">123699</a>	Preschool/Kindergarten	W	4-6	11/3-12/15	10:45-11:30am	Six	5/12	\$72/\$108 ●
<a href="#">123700</a>	Preschool/Kindergarten	W	4-6	11/3-12/15	4-4:45pm	Six	5/12	\$72/\$108 ●
<a href="#">123701</a>	Preschool	W	4-5	11/3-12/15	5-5:45pm	Six	5/12	\$72/\$108 ●
<a href="#">123697</a>	Kindergarten	W	5-6	11/3-12/15	6-6:45pm	Six	5/12	\$72/\$108 ●
<a href="#">123703</a>	Parent/Tot	Th	18-36 mo.	11/4-12/16	9:15-9:45am	Six	5/10	\$60/\$90 ●
<a href="#">123706</a>	Preschool	Th	4-5	11/4-12/16	10-10:45am	Six	5/12	\$72/\$108 ●
<a href="#">123707</a>	Tiny Tumblers	Th	3	11/4-12/16	11-11:30am	Six	5/10	\$60/\$90 ●
<a href="#">123705</a>	Pre-Developmental	Th	6-12	11/4-12/16	4-5pm	Six	5/12	\$84/\$126 ●
<a href="#">123704</a>	Developmental	Th	8-12	11/4-12/16	5:15-6:15pm	Six	5/12	\$84/\$126 ●
<a href="#">123708</a>	Tumbling 1	Th	7-14	11/4-12/16	6:30-7:15pm	Six	3/6	\$72/\$108 ●
<a href="#">123709</a>	Tumbling 2	Th	7-14	11/4-12/16	6:30-7:30pm	Six	3/6	\$84/\$126 ●
<a href="#">123711</a>	Parent/Tot	Sa	18-36 mo.	11/6-12/18	9-9:30am	Six	5/12	\$60/\$90 ●
<a href="#">123715</a>	Tiny Tumblers	Sa	3	11/6-12/18	9:45-10:15am	Six	5/10	\$60/\$90 ●
<a href="#">123714</a>	Preschool	Sa	4-5	11/6-12/18	10:30-11:15am	Six	5/12	\$72/\$108 ●
<a href="#">123710</a>	Kindergarten	Sa	5-6	11/6-12/18	11:30am-12:15pm	Six	5/12	\$72/\$108 ●
<a href="#">123712</a>	Pre-Developmental	Sa	6-12	11/6-12/18	12:30-1:30pm	Six	3/6	\$84/\$126 ●
<a href="#">123713</a>	Developmental	Sa	8-12	11/6-12/18	12:30-1:30pm	Six	3/6	\$84/\$126 ●

\*Must possess required skills to participate in class. See class description for details.

## Stay & Play Open Gym

Ages: Walking to Preschool

Children (preschool or younger) are invited to join us for playtime in the Spring Avenue Gymnastics Center. Pre-registration is not required but come early as space is limited to the first 30 participants. Children must be accompanied and supervised by an adult. This program is a great way to interact with your child in a safe and fun environment. It's also a great way to meet other parents and caregivers. Please pay at the Spring Avenue Recreation Center front desk. (ch)

**Days: Tuesdays & Fridays, 9am-11am**

**Dates: September 7 to December 17** (excluding 11/23 and 11/26)

**Drop-in R/NR Fee: \$5/\$8**

**10-Visit Punch Card R/NR Fee: \$35/\$65**





# Ice Skating & Hockey

**Location: Center Ice, 1N450 Highland Avenue**

## Parent/Tot Ice Skating

Parents and tots, ages 3-4, are on the ice together. Both must wear skates. This class teaches ice coordination, balance, and agility in a fun atmosphere.

## Ice Skating: Tot 1

This class teaches progressive levels 1-4 providing children ages 4-5 with ice orientation, balance, agility, and fun. Skate rentals are available.

## Ice Skating: Basic 1

Intended for students with no previous formal instructions. Participants will learn 1 and 2 foot glides, forward and backward swizzles, and backward

wiggles. Skate rentals are available. Higher levels must register directly through Center Ice of DuPage.

## Parent/Tot Hockey

Parents and tots, ages 3-4, are on the ice together. Both must wear skates. This class teaches ice coordination, balance, and agility in a fun atmosphere.

## Little Hockey

Students will learn ice coordination, balance, and agility in a fun atmosphere while wearing hockey equipment. Hockey skates and hockey helmet required. Skate rentals are available.

## Beginner Hockey

For participants who have had no formal instruction. Kids will learn basic forward and backward skating while wearing hockey equipment. Hockey skates and helmet required. Hockey stick is optional.

## Special Skater

This class is designed for skaters with physical and/or intellectual disabilities. This class will help to foster social skills, balance, a team atmosphere, a sense of achievement and fun. (jr)

## Class Schedule

*No class 11/3-11/6, 11/24-11/27, 12/1-12/4*

Code	Class	Day	Ages	Date	Time	Min/Max	Fee
<a href="#">123883</a>	Special Skater	Sa	All	10/16-12/18	12:10-1:10pm	1/8	\$100 ●
<a href="#">123884</a>	Parent/Tot Ice Skating	Th	3-4 w/adult	10/14-12/16	4:30-5pm	1/8	\$155 ●
<a href="#">123885</a>	Parent/Tot Ice Skating	Sa	3-4 w/adult	10/16-12/18	9:10-9:40am	1/8	\$155 ●
<a href="#">123886</a>	Parent/Tot Ice Skating	Sa	3-4 w/adult	10/16-12/18	11:20-11:50am	1/8	\$155 ●
<a href="#">123887</a>	Ice Skating: Tot 1	W	3-5	10/13-12/15	9:40-10:10am	1/8	\$145 ●
<a href="#">123888</a>	Ice Skating: Tot 1	Th	3-5	10/14-12/16	4:30-5pm	1/8	\$145 ●
<a href="#">123890</a>	Ice Skating: Tot 1	Sa	3-5	10/16-12/18	9:10-9:40am	1/8	\$145 ●
<a href="#">123889</a>	Ice Skating: Tot 1	Sa	3-5	10/16-12/18	11:20-11:50am	1/8	\$145 ●
<a href="#">123879</a>	Ice Skating: Basic 1	Th	6-12	10/14-12/16	4:30-5:10pm	1/8	\$155 ●
<a href="#">123880</a>	Ice Skating: Basic 1	Th	6-12	10/14-12/16	5:30-6:10pm	1/8	\$155 ●
<a href="#">123881</a>	Ice Skating: Basic 1	Sa	6-12	10/16-12/18	9:10-9:50am	1/8	\$155 ●
<a href="#">123882</a>	Ice Skating: Basic 1	Sa	6-12	10/16-12/18	11:20am-12pm	1/8	\$155 ●
<a href="#">123894</a>	Parent/Tot Hockey	Sa	3-4 w/adult	10/16-12/18	8:10-8:40am	1/8	\$155 ●
<a href="#">123893</a>	Little Hockey	W	3-5	10/13-12/15	9:40-10:10am	1/8	\$145 ●
<a href="#">123891</a>	Little Hockey	Th	3-5	10/14-12/16	4:30-5pm	1/8	\$145 ●
<a href="#">123892</a>	Little Hockey	Sa	3-5	10/16-12/18	8:10-8:40am	1/8	\$145 ●
<a href="#">123878</a>	Beginner Hockey	W	6-12	10/13-12/15	9:40-10:20am	1/8	\$155 ●
<a href="#">123877</a>	Beginner Hockey	Th	6-12	10/14-12/16	4:30-5:10pm	1/8	\$155 ●
<a href="#">123895</a>	Beginner Hockey	Sa	6-12	10/16-12/18	8:10-8:50am	1/8	\$155 ●



## Your Hometown Hockey Club.

The Admirals Youth Hockey Club, Glen Ellyn, IL provides hockey instruction, skill development and competitive play opportunities for kids of all ages and skill levels. The Admirals Hockey Club is a program that is 100% focused on developing hockey players through Long-term Athlete Development (LTAD) and age-appropriate focused training.

Registration  
OPEN!



Follow us on Social Media



[www.admiralshockeyclub.com](http://www.admiralshockeyclub.com)



Come Join us for Fall Hockey!

- ◉ 8U Teams (players aged 8 and under)
- ◉ Girls Teams
- ◉ 10U - 18U Youth Teams (Boys and girls)

*For information on practices, fees and programming, click below!*



# Martial Arts



Uniforms and belt testing available through the instructor. Youth, Parent/Child and Adult classes may train together. Beginner students will not be permitted to register into the current session after the second class has met. Registration for continuers-advanced students will be accepted after the start date, but full class fee is required.

## Pre-Karate

Ages: 4-7

Young children will develop flexibility, strength, and coordination in fun, yet disciplined activities. This program is specifically designed for growing minds and bodies to enhance memory and agility. Watch your child's confidence blossom and their skills improve. Min/Max: 5/10. (ch)

## Parent/Child Karate

Ages: 7 and up with parent

This program is an excellent opportunity to spend quality time with your child, while conditioning muscles, developing coordination, and improving cardiovascular fitness. Fees are per person. Min/Max: 5/10. (ch)

## Youth Karate

Ages: 7-14

Youth karate classes will put children in touch with their bodies and offer a good mix of strength training, with cardiovascular and flexibility exercises. Children increase their coordination, agility and poise, as well as learn lasting personal safety skills. They also benefit from the mental stimulation of learning the choreographed moves of the kata and the discipline of conforming to the class rules. Min/Max: 5/10. (ch)

## Adult Karate

Ages: 15 and up

Release tension and develop total body fitness and build stamina and overall productivity. In addition to self-defense skills, karate increases flexibility, cardiovascular endurance, and muscle tone, while improving core strength. From work to home, the benefits of karate can be felt in all aspects of life. Min/Max: 5/10. (ch)

**CC:** Community Center, 1777 S. Blanchard Road, Wheaton  
**MSRC:** Main Street Recreation Center, 501 Hill Avenue, Glen Ellyn

**CAC:** Central Athletic Complex, 500 S. Naperville Road, Wheaton

## Class Schedule

No class 11/24

Code	Type	Level	Day	Date	Time	Location	R/NR Fee
<a href="#">123102</a>	Pre-Karate	Beginner/Continuing	W	9/8-12/15	4:10-4:55pm	CC	\$168/\$252 ●
<a href="#">123104</a>	Pre-Karate	Inter/Adv.	W	9/8-12/15	5-5:45pm	CC	\$168/\$252 ●
<a href="#">123105</a>	Pre-Karate	Beginner/Continuing	Sa	9/11-12/18	3:15-4pm	CAC	\$180/\$270 ●
<a href="#">123103</a>	Pre-Karate	Inter./Adv. (Orange & Up)	Sa	9/11-12/18	4:05-4:50pm	CAC	\$180/\$270 ●
<a href="#">123101</a>	Parent/Child	Beg./Cont. White-Red	Sa	9/11-12/18	2-3pm	CAC	\$180/\$270 ●
<a href="#">123100</a>	Parent/Child	Novice Orange-Blue	Sa	9/11-12/18	3-4pm	CAC	\$180/\$270 ●
<a href="#">123099</a>	Parent/Child	Inter. Green-Purple	Sa	9/11-12/18	4-5pm	CAC	\$180/\$270 ●
<a href="#">123098</a>	Parent/Child	Advanced Brown & Up	Sa	9/11-12/18	5-6pm	CAC	\$180/\$270 ●
<a href="#">123108</a>	Youth	Beg./Cont. White-Yellow	W	9/8-12/15	6:30-7:30pm	MSRC	\$168/\$252 ●
<a href="#">123109</a>	Youth	Int./Adv. Blue-Black	W	9/8-12/15	7:30-8:30pm	MSRC	\$168/\$252 ●
<a href="#">123107</a>	Youth	Beg./Cont. White-Red	Sa	9/11-12/18	2-3pm	CAC	\$180/\$270 ●
<a href="#">123111</a>	Youth	Novice Orange-Blue	Sa	9/11-12/18	3-4pm	CAC	\$180/\$270 ●
<a href="#">123110</a>	Youth	Inter. Green-Purple	Sa	9/11-12/18	4-5pm	CAC	\$180/\$270 ●
<a href="#">123106</a>	Youth	Advanced Brown & Up	Sa	9/11-12/18	5-6pm	CAC	\$180/\$270 ●
<a href="#">123097</a>	Adult	Continuer Red-Blue	W	9/8-12/15	8:30-9:30pm	MSRC	\$168/\$252 ●
<a href="#">123096</a>	Adult	Inter./Adv. Green-Black	W	9/8-12/15	8:30-10pm	MSRC	\$217/\$326 ●

## Parent/Child Taekwondo

Ages: 7 & Up with Adult

This class provides families with a fun opportunity to spend time together while improving physical and mental conditioning through cardiovascular drills, calisthenics, and traditional Taekwondo techniques including punching, kicking, and blocking. Fee is listed per person. A \$45 uniform fee is not included in class fee and is due at first class to instructor. Colored belt students are required to have complete sparring gear. Location: Spring Avenue Recreation Center. Min/Max: 4/10. No class 11/27. (ch)

Code	Day	Date	Time	R/NR Fee
<a href="#">123078</a>	Sa	8/28-12/18	12:35-1:30pm	\$208/\$312 ●

## Little Dragons Taekwondo

Ages: 4-5

This introductory class is designed to captivate the interest of our youngest students. Skills are developed through gentle instruction and appropriate games for their ability. This class focuses on developing balance, coordination, and respect for the discipline of martial arts training. A \$45 uniform fee is not included in class fee and is due at first class to instructor. Colored belt students are required to have complete sparring gear. Location: Spring Avenue Recreation Center. Min/Max: 4/15. No class 11/27. (ch)

Code	Day	Date	Time	R/NR Fee
<a href="#">123077</a>	Sa	8/28-12/18	10-10:40am	\$208/\$312 ●

## Early Taekwondo

Ages: 6-7

Designed especially for the younger children of 6-7 years, this program helps kids develop conditioning, coordination, listening skills, and self-confidence through creative activities. A \$45 uniform fee is not included in class fee and is due at first class to instructor. Colored belt students are required to have complete sparring gear. Location: Spring Avenue Recreation Center. Min/Max: 4/12. No class 11/27. (ch)

Code	Day	Date	Time	R/NR Fee
<a href="#">123076</a>	Sa	8/28-12/18	10:45-11:35am	\$208/\$312 ●

## Youth Taekwondo

Ages: 8-13

This program includes a balanced cardiovascular workout, including punching, kicking, and blocking skills, using the Taekwondo tradition, and self control. Participants will improve coordination, power of concentration, balance, and both physical and mental discipline. A \$45 uniform fee is not included in class fee and is due at first class to instructor. Colored belt students are required to have complete sparring gear. Location: Spring Avenue Recreation Center. Min/Max: 4/12. No class 11/27. (ch)

Code	Day	Date	Time	R/NR Fee
<a href="#">123079</a>	Sa	8/28-12/18	11:40am-12:30pm	\$208/\$312 ●

## Adult Taekwondo

Ages: 14 & Up

This program concentrates on Taekwondo technique through the study of forms, stances, and the skills of punching, kicking, and blocking. A \$45 uniform fee is not included in class fee and is due at first class to instructor. Colored belt students are required to have complete sparring gear. Location: Spring Avenue Recreation Center. Min/Max: 4/12. No class 11/27. (ch)

Code	Day	Date	Time	R/NR Fee
<a href="#">123075</a>	Sa	8/28-12/18	12:35-1:30pm	\$208/\$312 ●



# Platform Tennis Center

845 Pershing Avenue, Glen Ellyn (within Maryknoll Park)

Open year-round, the Glen Ellyn Platform Tennis Center features six courts and modern Paddle Hut. A membership is required to use the facility, but non-members are welcome to sign up for private lessons and classes (when available). Platform tennis is the only racquet sport that players can enjoy outdoors in any climate. You don't need to have prior knowledge of the game as it's easy to learn. The game is primarily played in the winter and is geared toward 4 players.

## Membership Benefits

- No additional court fees to play year-round.
- Unlimited access to court time when not programmed with leagues, lessons or events.
- Access to the Paddle Hut between 7am and 11pm. Under Phases 1-4 of the Restore Illinois Plan, the Hut is for restroom use only.
- Privilege of making court reservations 7 days in advance. Note: four courts are reserved for the Glen Ellyn Platform Travel Club on Tuesday, Wednesday, and Thursday evenings from October-March.
- Discount on lessons.

**REFER A FRIEND:** Returning members from the 2020/2021 season may refer a new member and receive a \$25 discount on your membership. Offer valid September 1-October 31.

## Full Year Membership Sept. 1, 2021 to Aug. 31, 2022

Type	Resident	Nonresident	Add'l Child
<b>Adult (18 &amp; Up)</b>	\$260	\$310	-
<b>Junior (6-17)</b>	\$50	\$75	-
<b>Family</b>	\$500	\$590	\$15/child

*Includes 2 adults (same household) or 2 adults and 2 children (age 17 & under) per household. Youth members must be accompanied by an adult and do not receive a key to the Paddle Hut.*

## Private Lessons

Our Platform Tennis Professional, Mark Cunnington, can tailor lessons to your specific needs. Mark comes to the Park District highly skilled in the sport of platform tennis as well as tennis. USPTA and PPTA certified, Mark has over 6 years experience in coaching platform tennis and is currently ranked in the top 40 in the nation. To get started, email at [gepaddlepro@gmail.com](mailto:gepaddlepro@gmail.com). Pricing below is listed per person; semi-private lessons are for two players.



Type	M/NM Fee
Private 30-Minute	\$35/\$40
Private 60-Minute	\$70/\$80
Semi-Private 30-Minute	\$18/\$22
Semi-Private 60-Minute	\$35/\$40
3 & A Pro 30-Minute	\$15/\$20
3 & A Pro 60-Minute	\$25/\$30
5 Private 60-Minute	\$300/\$360



# Platform Tennis Lessons & Leagues

## Platform Tennis Open House

Ages: 6 and up

Learn the game of Platform Tennis and how to become involved in the program while socializing and enjoying light snacks and beverages. Several of the area's top platform tennis professionals will be on hand to provide instruction on grips, rules, and strategies. The clinic will end with a Pro Exhibition and open play from 8pm-9pm. This event is free, but registration is required. Location: Platform Tennis Center. (bt)

Code	Group	Day	Date	Time	Fee
<a href="#">123264</a>	Juniors (6-17)	F	9/10	5-6pm	Free w/registration ●
<a href="#">123265</a>	Women	F	9/10	6-7pm	Free w/registration ●
<a href="#">123263</a>	Men	F	9/10	7-8pm	Free w/registration ●

## Quick Start Paddle

Ages: 21 and up

This crash course will keep your skills fresh, so you're ready for the season. You will learn all of the basic paddle shots in this fun and fast paced lesson with our pro, Mark Cunnington. Location: Platform Tennis Center.

Min/Max: 6/8. (bt)

Code	Section	Day	Date	Time	M/NM Fee
<a href="#">123267</a>	Women	M	9/27-10/25	6-7pm	\$125/\$150 ●
<a href="#">123266</a>	Men	Tu	9/28-10/26	6-7pm	\$125/\$150 ●

## Beginner Paddle Boot Camp

Ages: 21 and up

This two-hour boot camp will go over all the basics, including grips, technique, and strategy. The program will end with you playing paddle like a pro! Location: Platform Tennis Center. Min/Max: 6/8. (bt)

Code	Section	Day	Date	Time	M/NM Fee
<a href="#">123272</a>	Women	Th	9/9	6-8pm	\$50/\$70 ●
<a href="#">123271</a>	Men	F	9/16	6-8pm	\$50/\$70 ●

## Kids Paddle and Pizza

Ages: 5-14

Jump into this popular program and come out and play some paddle at Maryknoll Park. You will learn skills and drills, play a few games and then head inside for some pizza! Our Paddle Pro Mark Cunnington is sure to make this class a blast. Location: Platform Tennis Center. Min/Max: 4/16. (bt)

Code	Day	Date	Time	Fee
<a href="#">123268</a>	M	10/18-11/15	4:30-6pm	\$125 ●
<a href="#">123269</a>	Tu	10/19-11/16	4:30-6pm	\$125 ●



## Monday Fall In-House League

Ages: 21 and up

This is our most popular in-house league and sign-up is first come, first serve. This league is designed to help introduce new players to the game and enhance the experience for advanced beginners. All games are played in Glen Ellyn at our courts. Players will be ranked by our Platform Pro and placed into beginning or advanced teams. Must hold a Glen Ellyn Platform Tennis Membership to participate. More advanced players should consider the Glen Ellyn Platform Travel Club. Location: Platform Tennis Center. Min/Max: 16/84. (bt)

Code	Day	Date	Time	R/NR Fee
<a href="#">123273</a>	M	10/4-12/6	7-10pm	\$90/\$115 ●

## Wednesday Fall In-House Women's League

Ages: 21 and up

This league is geared toward female players. Members will be evaluated by our Platform Pro and placed on teams. Teams will play a weekly match on our courts with other members. Must hold a Glen Ellyn Platform Tennis Membership to play in this league. Contact Platform Tennis Pro Mark Cunningham at [gepaddlepro@gmail.com](mailto:gepaddlepro@gmail.com) for more information. Location: Maryknoll Park Platform Tennis Center. Min/Max: 16/40. (bt)

Code	Day	Date	Time	R/NR Fee
<a href="#">123262</a>	W	10/13-12/14/5	5-6:30pm	\$90/\$110 ●

## Men's & Women's Travel League

The Glen Ellyn Park District works in conjunction with the Glen Ellyn Platform Tennis Club (GEPTC) to provide travel leagues. The GEPTC Men's Travel program has many teams playing in various levels (series) of play. These teams participate in the Chicago Platform Tennis Charities and Southwest leagues. Teams travel to other communities, as well as hosting home matches in the evenings. The Women's Travel league participates in the North Shore and Southwest leagues and travels during the day. Please contact Mark Cunningham at [gepaddlepro@gmail.com](mailto:gepaddlepro@gmail.com) for more information. All travel members must also hold a Glen Ellyn Park District Platform Membership.



# Pickleball

## FREE Adult Pickleball Clinic

Ages: 18 and up

Learn to play the fast and fun game of pickleball. Bring your paddle if you have one or you can borrow one of ours. Free juice and bagels will be provided for all players. Once you try it you will be hooked. Free, but registration required. Contact Mark Cunningham at [gepaddlepro@gmail.com](mailto:gepaddlepro@gmail.com) for more information. Location: Village Green Park. Min/Max: 8/20. (bt)

Code	Day	Date	Time	Fee
<a href="#">123260</a>	Sa	WAITLIST		Fee w/registration ●
<a href="#">123261</a>	Sa	WAITLIST		Fee w/registration ●

## Pickleball In-House League

Ages: 18 and up

Our staff will provide basic instruction to players and place players on teams based on their skill levels. Players will work on various skills and drills the first two weeks and then play matches for the remainder of the season. Location: Village Green Park. Min/Max: 8/30. (bt)

Code	Day	Date	Time	R/NR Fee
<a href="#">123838</a>	W	9/22-10/27	1-3pm	\$125/\$175 ●

## Pickleball Start/Restart

Ages: 18 and up

Join us for Pickleball Start/Restart and learn the basic skills, grips, and strategies to the game. This is a great class for beginners. For those more experienced players, there is also an intermediate level class. Players are required to provide their own paddle. Location: Village Green Park. Min/Max: 4/12. (bt)

Code	Level	Day	Date	Time	R/NR Fee
<a href="#">123832</a>	Beg.	Th	9/23-10/28	10-11am	\$90/\$135 ●
<a href="#">123835</a>	Beg.	Th	9/23-10/28	5-6pm	\$90/\$135 ●
<a href="#">123949</a>	Int.	W	9/22-10/27	12-1pm	\$90/\$135 ●



## Village Green Park

# Pickleball Court Expansion

With the sport of pickleball continuing to increase in participation and interest, the existing tennis court at Village Green Park was converted into two pickleball courts in July. The park, located at 130 S. Lambert Road, now features six courts dedicated to this popular sport.





# Ackerman SFC

800 St. Charles Road, Glen Ellyn • (630) 317-0130 • [AckermanSFC.com](http://AckermanSFC.com)

## Ackerman SFC Hours

### Fitness Center/Walking Track

Monday-Thursday ..... 4:30am-10pm  
Friday ..... 4:30am-9pm  
Saturday ..... 6am-7pm  
Sunday ..... 7am-7pm

### Front Desk

Monday-Friday ..... 5am-9pm  
Saturday ..... 6am-5pm  
Sunday ..... 7am-5pm

### Holidays

Labor Day (9/6) ..... 7am-1pm  
Thanksgiving Day (11/25) ..... 7am-1pm  
Christmas Eve (12/24) ..... 7am-1pm  
Christmas Day (12/25) ..... Closed  
New Year's Eve (12/31) ..... 7am-1pm  
New Year's Day (1/1) ..... 7am-3pm

## What's in the Gym

- PRECOR Adaptive Motion Trainers
- PRECOR EFX Ellipticals with Crossramp
- Matrix and Life Fitness Treadmills
- NuStep Recumbent Steppers
- Matrix, Octane, & Life Fitness Ellipticals
- Matrix ARC Trainers
- Matrix Bikes (Recumbent/Upright/Hybrid)
- Matrix Single Station Strength Machines
- Gauntlet Stairmasters
- Scifit Pro2 Trainers
- Concept 2 Rowing Machines
- Xerball & Medicine Ball
- Free Weights & Core Conditioning
- Stretching & CrossFit Area w/TRX Straps
- Cable Cross Weight Machines

## Amenities

7,000+ square foot fitness center, 3 court gymnasium, 45-yard by 60-yard indoor turf field, 2 lane indoor track (10.3 laps = 1 mile), group fitness studio, locker rooms and shower facility, and free Wi-Fi.

[See the Group Fitness Schedule »](#)

[View Personal Training Options »](#)



# Monthly Membership Fees

## \$0 ENROLLMENT FEE

- Fitness center and indoor track access
- Free weekly group fitness classes
- Open court/turf time
- Orientation with a personal trainer
- Bring a guest on the first Wednesday of the month
- Use of the Spring Avenue Fitness Center

We will automatically charge your membership fees to the credit/debit card you place on file each month.

Membership Type*	Resident	Nonresident
Teen (14-17)	\$21	\$23
Senior (60+)	\$21	\$23
Active Military	\$21	\$23
Individual (18-59)	\$30	\$35
Couple	\$50	\$55
Family	\$60	\$65

## Work in Glen Ellyn?

Ackerman SFC offers special membership rates to Glen Ellyn employees and teachers with proof of employment. Call or visit the Ackerman SFC front desk for details.



*Home for the holidays?*

## 30 Days for \$30

### STUDENT & TEACHER SPECIAL

Teachers and students (ages 14 +) can purchase a 30-day membership for just \$30 at Ackerman SFC. 30-day memberships are available for purchase from November 19, 2021, through January 16, 2022, only, and do not renew automatically. A valid school ID or proof of employment is required at time of purchase.

### MEMBERSHIP ADD-ON

## College of DuPage Lap Swimming

Active Ackerman SFC fitness members (ages 16+) may purchase a lap swimming monthly membership to swim at College of DuPage's indoor pool for just \$20 per member per month. Members that are ages 16-17 must have a parent/guardian sign the College's waiver of liability. Walking track only members are not eligible for this offer. To sign up, visit the College's Member Service Office where they will setup your membership. C.O.D. indoor pool hours are available at: [www.gepark.org/COD](http://www.gepark.org/COD)

\*Residents are defined as those living within Glen Ellyn Park District boundaries. Must provide proof of age if requested. A teen is defined as a person age 14-17 (age 11-13, if certified). Waiver must be signed by a parent or legal guardian. An individual is defined as a person age 18 & up. A senior is defined as a person age 60 & up. A family is defined as up to six immediate family members residing in the same household and children 26 years and younger living at home. Other relatives and individuals in the same household are not included in the family pass. Children 10 years and under have access to open turf, open gym, and open climb. Children 8 to 13 can access the track with a parent. Fitness center is available for children 14 years and older (age 11-13 after orientation; see front desk to set up an appointment). A couple is defined as two people living at the same address.



## Group Fitness Classes

Group fitness classes are included as part of the Ackerman SFC member fee. With more than 50 options to choose from each week, you're sure to find a class to fall in love with. Classes do not require registration, and may take place on the court, turf, or in the 2nd floor fitness studio.

[VIEW THE CLASS SCHEDULE »](#)

## Walking Track

The track is free for Ackerman members. Ages 8-13 must be accompanied by a member age 18 years or older to use the walking track.

### DAILY DROP-IN FEES

Ackerman SFC member ..... Free  
 R/NR Daily Drop-in..... \$5/\$7

### ANNUAL PASSES

Resident (Ages 8-59)..... \$35  
 Nonresident (Ages 8-59) ..... \$50  
 Senior (Ages 60 & Up)..... \$25

## Open Pickleball

Using a paddle, low net and a plastic ball with holes, this unique sport is enjoyed by people of all ages and athletic abilities thanks to its ease of play and straightforward rules.

### SCHEDULE

To view the schedule, visit: [ackermansfc.com/pickleball](http://ackermansfc.com/pickleball)

### FEES

Ackerman SFC member ..... Free  
 R/NR Daily Drop-in..... \$5/\$7  
 R/NR 5-Visit Punch Card ..... \$20/\$30

## Open Court & Turf

No reservations required. Please call the Ackerman SFC front desk for daily available open gym times. Open to both members and non-members.

### DAILY DROP-IN FEES

Ackerman SFC member ..... Free  
 Youth R/NR Daily Drop-in..... \$4/\$5  
 Adult R/NR Daily Drop-in ..... \$5/\$6

## Personal Training

Our certified personal trainers will design a program that meets your specific fitness needs. They can help you reach and/or maintain your goal by guiding you through safe, productive, supervised workouts.

# of Sessions	Length	Member	Non-Member
One	30 minutes	\$29	\$49
Three	30 minutes	\$84	\$126
Six	30 minutes	\$150	\$225
Twelve	30 minutes	\$282	\$423
One	1 hour	\$45	\$60
Three	1 hour	\$130	\$175
Six	1 hour	\$255	\$340
Twelve	1 hour	\$500	\$638

## Sports-Specific Training

Visit the Ackerman SFC front desk for more information or to setup your sessions.

### VOLLEYBALL TRAINING

All-State Coach Christine Giunta-Mayer from Glenbard West offers private lessons to any student-athlete/athletes that want to focus on specifics of their game. Boys and Girls 5th grade through college are given an opportunity to learn from Coach Giunta-Mayer and to work on their game. Sessions start at \$70.

### BASKETBALL TRAINING

Sign up for private lessons from Skill Development Coach Brett Love. Brett has high school and collegiate level playing experience with the credentials to train players to take their skills to the next level. Sessions start at \$45.



# Spring Ave. Fitness Center

185 Spring Avenue, Glen Ellyn • (630) 858-2462

## Membership Fees

Annual memberships are valid for one year from the date of purchase.

Ackerman SFC fitness members have full access to Spring Avenue Fitness Center and group fitness classes.

### INDIVIDUAL FEES (AGES 14-59)

Annual Pass..... \$245R/\$365NR  
3-Month Pass ..... \$135R/\$195NR  
1-Day Pass ..... \$7R/\$8NR

### SENIOR FEES (AGES 60 & UP)

Annual Pass..... \$120R/\$180NR  
1-Day Pass ..... \$4R/\$6NR

## SilverSneakers

If your Medicare health plan, Medicare supplement carrier, or group retiree plan includes SilverSneakers as part of your benefit package, you can work out at no extra cost. Visit the Spring Avenue front desk to learn more.

## Center Hours

Monday-Thursday ..... 9am-8pm  
Friday..... 9am-5pm  
Saturday ..... 9am-12pm  
Sunday ..... Closed

### HOLIDAY HOURS

Members may use Ackerman SFC with photo ID at no cost during holiday closings.

September 6..... Closed  
November 25-26 ..... Closed  
December 23-25 ..... Closed  
December 30-31..... Closed  
January 1..... Closed

## What You'll Find

- Treadmills, Ellipticals, Rowing Machine
- Recumbent Bikes
- Free Weights
- Dual-Station Strength Machines
- Lockers and Showers
- Equipment Orientation





# RISE & THRIVE

DuPage Medical Group

Keeping your family well is a challenge, but one you're determined to take on. Luckily, in DuPage Medical Group you'll find a care partner equally committed to the pursuit of a healthier you. From routine check-ups and specialty visits, to telehealth and online scheduling, DMG provides the expert care and tools needed to help your family live life to the fullest.

[DuPageMedicalGroup.com](https://www.DuPageMedicalGroup.com)

Set up an appointment today at [ScheduleDMG.com](https://www.ScheduleDMG.com).

# Rentals

Planning your next big event? We offer a wide variety of affordable indoor and outdoor venues. Deposits may be required with some rentals. Space is available on a first come, first served basis.



## Ackerman SFC

800 St. Charles Road, Glen Ellyn

Three full-size basketball courts and an indoor artificial turf field are available to rent for practices, games, parties, and more. The facility also features two 30' climbing walls, an outdoor volleyball court, and a party room.

**Contact:** Ryan Miller at (630) 317-0134



## Sunset Pool

483 Fairview Avenue, Glen Ellyn

Private pool rentals are perfect for picnics, neighborhood parties, birthdays, group outings, and more. The pool is available to rent on Friday and Saturday evenings from early June through late August. **Contact:** Chad Shingler at (630) 317-0137



## Spring Avenue Recreation Center

185 Spring Avenue, Glen Ellyn

Spring Avenue Recreation Center can accommodate a variety of events. A single classroom (up to 30 people) or the craft lab (up to 50 people) are available to rent. **Contact:** Christine Hartnett at (630) 942-7268



## Maryknoll Park Clubhouse Party Room

845 Pershing Avenue, Glen Ellyn

Room rental includes tables and chairs. Renter may bring in their own food. Alcohol is permitted with a liability contract. Room size is 25' x 40'. **R/NR Fee:** \$85/\$110 per hour; add \$210 for alcohol liability. The outdoor patio is available to rent with your room rental for a \$30 fee. **Contact:** Christine Hartnett at (630) 942-7268



## Main Street Recreation Center

501 Hill Avenue, Glen Ellyn

Conveniently located near downtown Glen Ellyn. Rent a single classroom (up to 30 people), double classroom (up to 50 people), or elementary-sized gymnasium. **Contact:** Christine Hartnett at (630) 942-7268



## Maryknoll Park Picnic Pavilion

845 Pershing Avenue, Glen Ellyn

This pavilion can accommodate groups of 50 patrons or less. There is a maximum of 6 picnic tables that can be set up for your exclusive use. No alcohol, grills, pets, inflatables, additional tables or piñatas allowed. **Contact:** Christine Hartnett at (630) 942-7268



## Athletic Fields

The Glen Ellyn Park District has fields available for soccer, baseball or softball: Ackerman Park, 800 St. Charles Road; Village Green, 130 S. Lambert Road; or Newton Park, 707 Fairview Avenue.

**Village Green & Newton Parks:**  
(630) 942-7290

**Ackerman Park:**  
Grass Fields: (630) 942-7288  
Synthetic Turf Field: (630) 317-0134

### 2-Hour Rental Fees:

1-30 Guests .....\$50R/\$75NR  
31-50 Guests .....\$80R/\$105NR

*Maryknoll Park Public Shelter with bathrooms is not meant for groups or patrons staying more than 30 minutes. This shelter is for small groups of patrons wishing to have a quick snack or lunch between park play.*

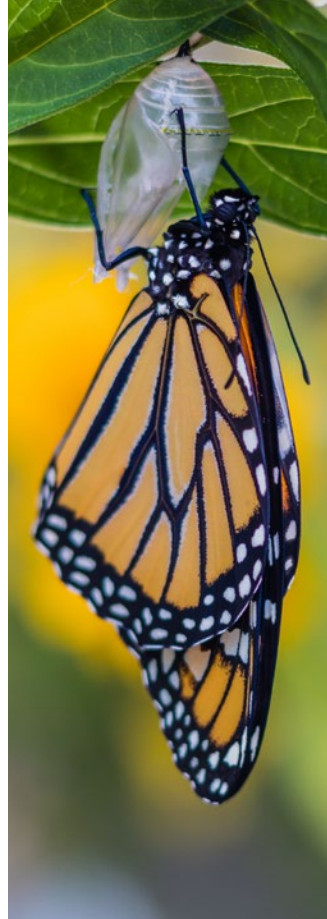


# Lake Ellyn Boathouse

**645 Lenox Road, Glen Ellyn • (630) 942-7267**

Located just 25 miles from downtown Chicago, this unique landmark house was built in 1937 as a community facility and was fully restored to its historic beauty in 2016. Beautifully placed along Lake Ellyn, the Boathouse has been home to numerous wedding ceremonies, receptions, anniversary parties, birthdays, and more.

**NOW BOOKING**



The scholarship program is available to all Glen Ellyn Park District residents that qualify. Scholarship funds can be used for non-contractual camps and classes, pool passes, trips, preschool, fitness, athletics, etc., where fees are required. Funds are not eligible for equipment purchases or rental fees. Residents who qualify are eligible to receive up to \$400 maximum per person per calendar year (January 1-December 31) based on need and availability of funds.

Applicants must be able to provide proof of residency and income as defined on the application. Copies of the application are available at [gepark.org/financial-aid](http://gepark.org/financial-aid) or by visiting the Spring Avenue (185 Spring Avenue) or Main Street (501 Hill Avenue) Recreation Centers.

A completed application form along with copies of supporting documents must be returned in person or mailed to: Executive Assistant, Glen Ellyn Park District, 185 Spring Avenue, Glen Ellyn, IL 60137. Please allow up to 3 weeks for the application process. Applicants will be notified by letter or phone of the decision made concerning the scholarship.

If you have further questions, call (630) 858-2462.



**GLEN ELLYN  
PARK DISTRICT**

# SCHOLARSHIP PROGRAM

*Parks & Activities  
for Everyone*



# EXPLORE *Your* PARKS

## Parks



- 1 Greenbriar Park
- 2 Spalding Park
- 3 Churchill Park
- 4 Stacy Park
- 5 Ackerman Park
- 6 George Ball Park
- 7 Sam Perry Nature Preserve
- 8 Babcock Grove Park
- 9 Benjamin Gault Bird Sanctuary
- 10 Lake Ellyn Park
- 11 Ellynwood Nature Preserve
- 12 Walnut Glen Park
- 13 Frank Johnson Center
- 14 Danby Park
- 15 Prairie Path Park
- 16 Pfuetze Park
- 17 Glen Oak Park
- 18 Marie Ulhorn/President's Park
- 19 Newton Park
- 20 Sunset Park
- 21 Glen Ellyn Manor Park
- 22 Surrey Park
- 23 Maryknoll Park
- 24 Co-Op Park
- 25 Panfish Playground
- 26 Village Green Park
- 27 Lake Foxcroft Park

## Facilities



- A** Ackerman Sports & Fitness Center
- B** Main Street Recreation Center
- C** Spring Avenue Recreation Center
- C** Spring Avenue Fitness Center
- C** Spring Avenue Dog Park
- D** Holes & Knolls Mini Golf + Splash Park
- D** Platform Tennis Facility
- E** Sunset Pool
- F** Lake Ellyn Boathouse

## Schools



- G** Ben Franklin School
- H** Forest Glen School
- I** Churchill School
- J** Hadley Junior High
- K** Glenbard South
- L** Glenbard West
- M** Glen Crest
- N** Lincoln School
- O** Memorial Field
- P** Park View School





## Park Features

• Denotes also lined for Pickleball

		Walking Paths/Trail	Playground	Baseball/Softball Field	Basketball Court	Tennis Court (Hard Court)	Pickleball Court	Platform Tennis	Sand Volleyball Court	Synthetic Turf Athletic Field	Open Play Area/Grass Fields	Outdoor Fitness Equipment	Picnic Shelter	Outdoor Pool	Fishing Pier	Splash Park	Mini Golf	Disc Golf	Skate Park	Ice Skating	Sled Hill
<b>Ackerman Park</b>	800 St. Charles Rd.	•	•	•					•	•	•	•									
<b>Babcock Grove Park</b>	324 Linden St.		•								•										
<b>Churchill Park</b>	271 St. Charles Rd.	•											•								
<b>Co-Op Park</b>	515 Wilson Ave.		•								•										
<b>Danby Park</b>	280 Duane St.	•	•								•										
<b>Ellynwood Preserve</b>	801 Ellynwood Dr.																				
<b>Benjamin Gault</b>	625 N. Main St.	•																			
<b>George Ball Park</b>	801 Elm St.					•					•		•								
<b>Glen Ellyn Manor Park</b>	375 Illinois St.	•	•								•										
<b>Glen Oak Park</b>	350 Woodstock Ave.		•								•										
<b>Greenbriar Park</b>	430 Second Place Glendale Heights	•	•								•		•								
<b>Frank Johnson Center</b>	490 Kenilworth Ave.		•								•										
<b>Lake Ellyn Park</b>	645 Lenox Rd.	•	•								•				•						•
<b>Lake Foxcroft Park</b>	2S540 Lambert Rd.	•	•								•		•		•						•
<b>Main Street Rec. Ctr.</b>	501 Hill Ave.		•		•						•										
<b>Maryknoll Park</b>	845 Pershing Ave.	•	•					•			•		•			•	•	•			
<b>Newton Park</b>	707 Fairview Ave.	•	•	•	•	•				•	•		•						•	•	•
<b>Panfish Playground</b>	Maintained by GEPD		•								•										
<b>Sam Perry Preserve</b>	735 Grand Ave.																				
<b>Pfuetze Park</b>	400 N. Park Blvd.										•										
<b>Prairie Path Park</b>	565 Steward Ave.																				
<b>President's Park</b>	265 Cumnor		•								•										
<b>Spalding Park</b>	22W325 2nd St.		•								•		•								
<b>Spring Avenue Rec. Ctr.</b>	185 Spring Ave.										•										
<b>Stacy Park</b>	50 Geneva Rd.		•		•						•		•						•		
<b>Sunset Park</b>	483 Fairview Ave.		•			•					•			•							
<b>Surrey Park</b>	95 Surrey Dr.		•		•						•										
<b>Village Green Park</b>	130 S. Lambert Rd.		•	•	•	•	•				•		•			•					
<b>Walnut Glen Park</b>	860 Walnut St.		•																		

# The Fun Starts Here



## Community-Based Recreational Programs and Inclusion Services For Park District Programs

### WDSRA RECREATIONAL & SOCIAL PROGRAMS: IN-PERSON & VIRTUAL

WDSRA provides fun, engaging recreational and social programs, trips, and special events for children, teens, and adults with special needs. Programs are structured to allow everyone to participate at their own ability level. Through WDSRA each individual has the opportunity to grow personally, connect with their community and discover their potential.

- Sports
- Special Olympics
- Music and Dance
- Art and Drama
- Bowling
- Social Clubs
- Special Events
- Adaptive Sports
- Overnight Outings
- Weeklong Trips
- And much more!

### INCLUSION SERVICES

Inclusion Services are designed to provide the least restrictive environment while providing the maximum opportunity to participate in regular park programs. There is no charge for WDSRA support. To register for services, simply indicate that special accommodations are needed on the park district registration form. Two-week advance notice is requested for inclusion support.



### BE A PART OF THE FUN!

We are looking for people who are optimistic and enthusiastic.  
Flexibility. Training. Choice.



For details visit  
[www.wdsra.com](http://www.wdsra.com) -  
Join Our Team.

Western DuPage Special Recreation Association  
630-681-0962 • [www.wdsra.com](http://www.wdsra.com)

# DISTRICT POLICIES

## DEFINITION OF RESIDENCY

Not all Glen Ellyn residents are in the Park District. Anyone living within the geographic boundaries of the Glen Ellyn Park District is considered a resident. Glen Ellyn Park District residents, via property taxes, make financial contributions to the operation of the park system. Non-residents are charged higher fees for programs than residents to compensate for property tax disparity.

Residents of Glen Ellyn who are not residents of the Glen Ellyn Park District or any other park district may receive all the privileges of belonging to the Glen Ellyn Park District by paying the equivalent of Park District taxes annually. This membership allows for priority registration, pool passes, and any other services provided to our residents at the resident rate.

## WAIVERS OF LIABILITY

To participate in any Glen Ellyn Park District program, you must sign a waiver releasing the Park District of any liability.

## REFUNDS, CANCELLATIONS

The Glen Ellyn Park District reserves the right to cancel, postpone or combine classes, or change instructors. If insufficient enrollment causes a class to be canceled, notification will be given 7 days in advance, and full tuition refunded. Withdrawals prior to the start of a class will be assessed at minimum a \$5.00 service charge. Refunds for moving, injury/illness, or schedule changes will be pro-rated according to the date the request for a refund is made.

## COMMITMENT TO QUALITY

To encourage first time participation as well as repeat participation, the Park District has a refund policy highlighted by a satisfaction guarantee. This special refund policy provides us with timely feedback about dissatisfaction regarding our services. We can then take prompt action to improve services. If you are not completely satisfied, tell us and we will either: invite you to repeat the class at no charge; allow you a credit that can be applied to another program; issue you a full refund.

Our guarantee is based on fulfilling our promise to deliver the published expectations describing the service you have used. A refund will be granted if you were dissatisfied with the experience due to circumstances under the Park District's control.

Requests for the above-mentioned options must be made before the midpoint of the program or within two weeks of a single meeting activity. All refund requests must be submitted in writing and returned to the Spring Avenue Recreation Center or the Main Street Recreation Center. Satisfaction Guarantee does not apply to trips, special events with prepaid admissions and tickets, and athletic programs where equipment has already been ordered.

## FINANCIAL ASSISTANCE

The Glen Ellyn Park District recognizes there are community residents who may suffer economic setbacks that might preclude their participation in Glen Ellyn Park District programs. Financial assistance forms are available at the Spring Avenue and Main Street Recreation Center. All requests remain confidential. Questions? Contact Kimberly Dikker at (630) 942-7256.

A referral for additional scholarship assistance is also available to qualified resident children under the age of 18 through the Milton Township Youth Committee's Family Youth Scholarship Fund.

## INSURANCE

The Glen Ellyn Park District does not provide medical insurance coverage for individuals who participate in our programs or use our facilities. To do so would make programs and user fees cost prohibitive.

## AMERICANS WITH DISABILITIES ACT

The Americans with Disabilities Act (ADA) prohibits discrimination on the basis of a disability. The Glen Ellyn Park District will make reasonable accommodations in recreation programs to enable participation by an individual with a disability that meets essential eligibility requirements for that leisure program and facility.

If you have questions or believe you have been unfairly discriminated against by the Park District, please contact Nick Cinquegrani at (630) 942-7257. Those who use the Telecommunications Device for the deaf may reach the Park District by calling the Illinois Relay Line at (800) 526-0844.

## NON-DISCRIMINATION STATEMENT

The Glen Ellyn Park District prohibits discrimination in all its programs and activities on the basis of race, color, national origin, gender, religion, age, disability, political beliefs, sexual orientation, marital or family status.

## BEHAVIOR POLICY

Participants are always expected to exhibit appropriate behavior. The following guidelines have been developed to help make Park District programs safe and enjoyable for all participants. Additional rules may be developed for specific programs and athletic leagues as deemed necessary by staff. Participants shall:

1. Show respect to all participants and staff, take direction from staff.
2. Refrain from using abusive or foul language.
3. Refrain from causing bodily harm to self, other participants or staff.
4. Show respect for equipment, supplies and facilities.

A positive approach will be used regarding discipline. Staff will periodically review rules with participants during the program session. If inappropriate behavior occurs, prompt resolution will be sought specific to each individual situation. The Park District reserves the right to dismiss a participant whose behavior endangers the safety of themselves or others.

## PARENT'S CODE OF ETHICS

- I will encourage good sportsmanship by demonstrating positive support for players, coaches, and officials at every game and practice.
- I will place the emotional and physical well-being of my child ahead of my personal desire to win.
- I will insist that my child play in a safe and healthy environment.
- I will require that my child's coach be trained in the responsibilities of being a youth sports coach.
- I will remember that the game is for youth – not adults.
- I will do my very best to make youth sports fun for my child.
- I will ask my child to treat other players, coaches, and officials with respect regardless of race, gender, creed, or ability.
- I agree with these rules and understand that the Glen Ellyn Park District Associations have adopted a Zero-Tolerance Policy and that not abiding by these rules may restrict me from attending future games and practices.

## PETS AT EVENTS

The Glen Ellyn Park District asks that everyone please exercise good judgment and leave pets at home when attending events that draw large crowds. Please show respect for other people, yourself and your pet by helping the Park District maintain a safe and healthy environment where all people have the opportunity to participate and enjoy themselves.

## NOTICE OF POSSIBLE CHANGES IN PLAYBOOK LISTINGS

The policies, procedures, requirements, programs, fees and facility availability contained in this Playbook represent Park District program and policies at the time of publication. Sometimes changes in the programs (including fees, locations, times, etc.) and policies are necessary after Playbook publication but prior to program commencement or facility operation.

To provide the best services, programs and facilities to the public, the Park District reserves the right to add, to change, modify or delete any program or policies after they have been published. The Park District will attempt to make a reasonable effort to give prompt public notice of any material changes in the programs and policies, but notice cannot be assured. We apologize for any inconvenience this may cause and appreciate your understanding and cooperation.

## PHOTO/VIDEO POLICY

The Glen Ellyn Park District uses pictures or videos of participants to publicize recreation opportunities in our social media, print, and online marketing. If you do not want a picture taken, please tell our photographer. If the picture has already been taken, please contact the Park District at (630) 942-7260.