

Photo: Fishing at Lake Foxcroft



**GLEN ELLYN  
PARK DISTRICT**



*September & October*

# Playbook

*Autumn fun...part one!*

## Registration Dates

Resident: Aug. 2 at 10pm

Nonresident: Aug. 17 at 8:30am

INSIDE ↘



[www.gepark.org](http://www.gepark.org)



# Stay Connected!

Keep up to date with the latest events, share photos, and interact with your friends and neighbors on all of our social media pages!



**glenellynparks**

**IMPORTANT NOTICE.  
PLEASE READ.**

# ACTIVITY GUIDES

Available online only

Due to the fluid conditions surrounding the COVID-19 pandemic, brochures **will not be** printed or delivered to homes until further notice. Instead, to provide you with the most accurate and up-to-date information, brochures will be available online only at: [gepark.org/playbook](http://gepark.org/playbook)

Updates will be made to the online PDFs/digital issues as changes occur as well as communicated via emails to participants and/or social media channels. Please subscribe to our newsletter to receive alerts when new issues are released or new programs added. Below is a tentative release schedule (subject to change):

## NOVEMBER/DECEMBER ISSUE

- **Posted on website:** September 21, 2020
- **Resident registration:** Sunday, Oct. 4 at 10:00 p.m.
- **Nonresident registration:** Monday, Oct. 19 at 8:30 a.m.



## Table of Contents

### Programs

Adult & Senior Interest .....	34-39
Adult & Senior Sports.....	55
Adventure Time .....	21
Dance Academy .....	62-63
Early Childhood Interest.....	22-25
Early Childhood Sports .....	45-48
ESport Leagues.....	57
Family Activities.....	6-9
Fitness.....	64-69
Gymnastics Center .....	58-60
Martial Arts.....	56
Nature.....	40-43
Platform Tennis.....	10-12
Preschool .....	18-20
Trips.....	36
Youth Interest .....	26-33
Youth Sports.....	49-54

### Facilities

What's Open at the Park District.....	5
Ackerman Sports & Fitness Center .....	64-68
Holes & Knolls Mini Golf.....	14
Parks & Park Amenities.....	74-81
Rentals.....	72-73
Splash Park at Maryknoll Park .....	15
Spring Avenue Dog Park .....	74
Spring Avenue Fitness Center.....	69

### Registration

Program Supervisors .....	4
Registration Information .....	4
District Policies.....	83
Scholarship Fund .....	13

### Other

FREE Activity Book.....	84
-------------------------	----

# We're Here to Help!

Staff initials follow the program description for which they are responsible.

BT	Brad Thomas	bthomas@gepark.org
CB	Clint Babicz	cbabicz@gepark.org
CH	Christine Hartnett	chartnett@gepark.org
CS	Chad Shingler	cshingler@gepark.org
JR	Jeannie Robinson	jrobinson@gepark.org
MD	Mary Defiglia	mdefiglia@gepark.org
RF	Renae Frigo	rfrigo@gepark.org
SL	Stacey Lim	slim@gepark.org
TS	Taylor Stirmell	tstirmell@gepark.org

- Website ..... gepark.org
- Registration/General Questions ..... (630) 858-2462
- Ackerman SFC Questions ..... (630) 317-0130
- Closure/Cancellation Hotline ..... gepark.org/hotline



**glenellynparks**

# How & When to Register

**Resident Registration: August 2 at 10pm**  
**Nonresident Registration: August 17 at 8:30am**

## Online Registration

Log onto [www.gepark.org/register](http://www.gepark.org/register) to sign up for almost any class, program or event. If you are a new user you must create a new account prior to registering online by clicking "Create an Account" and following the on-screen prompts.

## In Person & Drop Off Registration

Available at the Spring Avenue Recreation Center, 185 Spring Avenue, only. For assistance by phone, please call (630) 858-2462.

**Monday-Friday:** 9:00am-5:00pm  
**Saturday-Sunday:** Closed  
*Closed on Monday, September 7 (Labor Day)*

## Mail/Fax Registration

**Mail:** Glen Ellyn Park District, Registration, 185 Spring Avenue, Glen Ellyn, 60137  
**Fax:** (630) 389-8527

# BOARD of COMMISSIONERS

For the Board meeting schedule and information, please visit [gepark.org/board-meetings](http://gepark.org/board-meetings)



Michael Ward  
President



Alex Durham  
Vice President



Julia Nephew  
Treasurer



Ben Stortz



Kathy Cornell



Paul Bischoff Jr.



Rob Weber

## Mission Statement

The Glen Ellyn Park District is driven to foster diverse, community-based leisure opportunities, through a harmonious blend of quality recreation programs, facilities, and open space which will enhance the quality of life into the future.

# WHAT'S OPEN

## at the Glen Ellyn Park District?

Informed by recommendations from health experts, Glen Ellyn Park District is moving to a new normal and easing restrictions on select parks and amenities for passive activities and limited recreation. Current CDC and State Health Department guidelines regarding the use of masks, 6 feet of social distancing between individuals and limit of groups of 50 people or fewer, must be followed.



<b>Ackerman Sports &amp; Fitness Center</b>	Fitness center, group fitness, personal training, indoor track are open. Members can reserve an open court or Fit & Play Child Drop Off time slot at <a href="http://gepark.org/register">gepark.org/register</a> . <i>No drop-in childcare, open turf or climbing wall at this time.</i>
<b>Spring Avenue Recreation Center</b>	Open for in-person/drop-off registration 9am-5pm Monday-Friday
<b>Spring Avenue Fitness Center</b>	Open by reservation only at (630) 858-2462
<b>Holes &amp; Knolls Mini Golf</b>	Open by reservation at <a href="http://gepark.org/minigolf">gepark.org/minigolf</a> <i>Walk ups allowed but subject to availability</i>
<b>Main Street Recreation Center</b>	Open to camp/class participants only
<b>Maryknoll Splash Park</b>	<b>Closed for the season</b>
<b>Newton Skate Park</b>	Open
<b>Spring Avenue Dog Park</b>	Open to members only
<b>Sunset Pool</b>	<b>Closed</b>
<b>Park Trails and Walking Paths</b>	Open
<b>Playgrounds</b>	Open
<b>Newton Park Synthetic Turf Field</b>	Open
<b>Ackerman Park Synthetic Turf Field</b>	Open
<b>Natural Grass Areas/Fields</b>	Open
<b>Baseball/Softball Fields</b>	Open
<b>Tennis (Hard Courts) &amp; Pickleball Courts</b>	Open
<b>Clay Tennis Courts</b>	Open to members only through November 1
<b>Platform Tennis Courts</b>	Open to members only
<b>Sand Volleyball Court</b>	Open
<b>Disc Golf Course</b>	Open
<b>Bocce Ball Courts</b>	Open
<b>Outdoor Fitness Equipment</b>	Open
<b>Basketball Courts</b>	Open
<b>Park Restrooms</b>	Partially Open: Lake Ellyn, Ackerman (near playground), Maryknoll and Village Green Parks only

# Family Activities

## Bat and Moth Hike

**FREE**

Ages: All

Join us as the sun sets for a hike to search for a few winged creatures of the night. Learn about bats and common moth species. We will set up a lighted “bug sheet” to see if we can attract moths while we are on our walk. Free but please register. Maximum participants will reflect current health guidelines. Location: Churchill Park, 271 St. Charles Road. (rf)

**R/NR**—Free, but registration required

117655	F	9/11	7-8pm
--------	---	------	-------

## Family Nature & Forest Therapy Walk

Ages: All

Bring the family out for an immersion in nature, filled with mindful and deliberate observations among the trees and fields. After the walk, enjoy a tea ceremony to reflect on the experience. There are many proven physical and mental benefits associated with time in nature and this growing practice. A certified Nature and Forest Therapy Guide will lead the program. Please register just one member of your family. Location: Churchill Park, 271 St. Charles Road. Min/Max: 2/5 families. (rf)

**R/NR**—\$15/\$22.50 per family

1178518	Sa	10/10	9-10:30am
---------	----	-------	-----------

## Mother/Daughter Princess Tea

Ages: 3-10 with Adult

Young ladies will enjoy teas, lemonade and light refreshments, while having great fun with their mom! Participants will also have a chance to visit with Anna and Elsa. Formal tea attire is recommended, and princess dresses are encouraged. It’s sure to be a memorable day, so reserve your teacup early! If mom cannot attend, another family member is welcome to come. Location: Lake Ellyn Boathouse, 645 Lenox Road. Max: 40. (ts)

**R/NR**: \$20/\$30

Each adult and child attending must register.

118182	Su	9/20	10-11:30am
--------	----	------	------------

118183	Su	9/20	1-2:30pm
--------	----	------	----------

## Oak Tree Celebration

**FREE**

Ages: All

Take a tree tour around the park and learn about the importance of biodiversity and the beneficial attributes of specific trees, with a special focus on oaks. Help decorate several of our oaks for the month of “OAKTOBER” to help bring more awareness of this important local species. Free but please register. Maximum participants will reflect current health guidelines. Location: Lake Ellyn Park, 645 Lenox Road. (rf)

**R/NR**—Free, but registration required

117654	Sa	10/3	10-11:30am
--------	----	------	------------



## Enjoy an Ol’ Fashioned Scavenger Hunt!

**FREE**

Visit [gepark.org/athome](http://gepark.org/athome) to download our free Scavenger Hunt booklet featuring 10 scavenger hunts with fun twists designed to help you unplug, play, or connect with friends and loved ones.

## Activity Mini Books

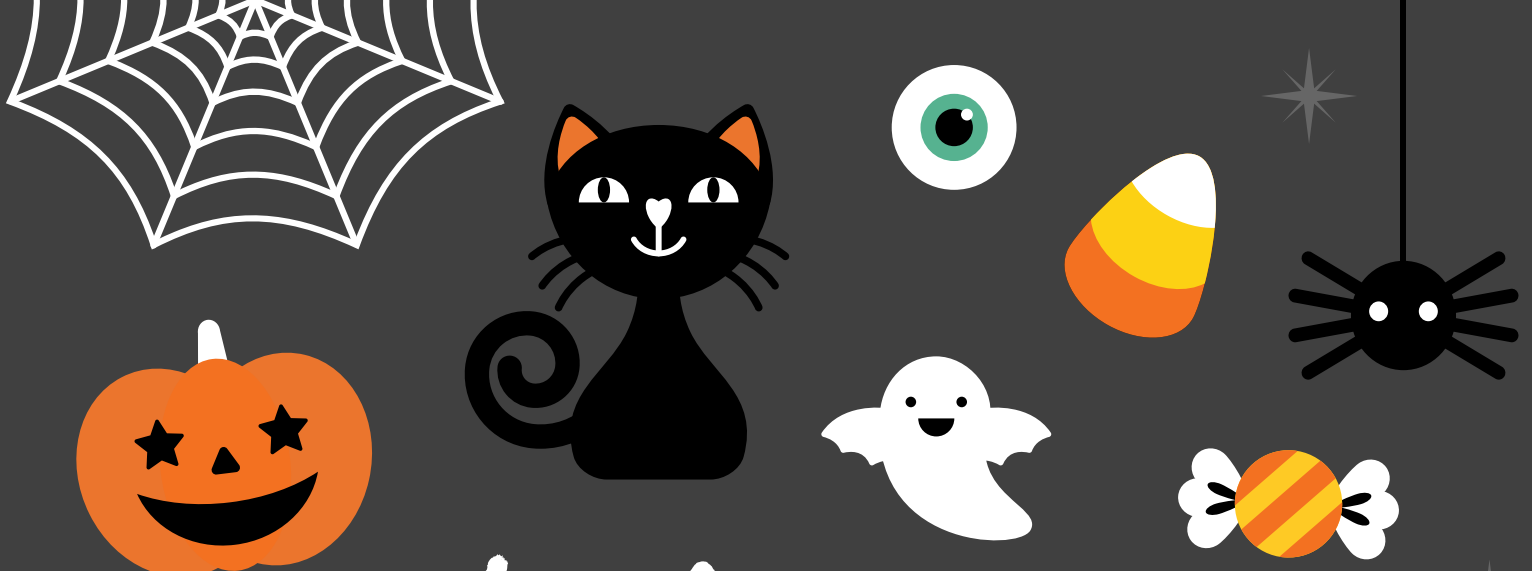
**FREE**

Check our social media pages each Friday through August 14 for a new Activity Mini Book featuring coloring pages, mazes, word searches, and more. The most recent one is included at the end of this Playbook!









# Halloween HAPPENINGS

## Ghost Hunt

October 23 • 6pm-7pm

Ages: All

Join us for a sunset hike to search for hidden ghosts throughout Churchill Park. Successfully find the ghosts and answer a few nature trivia questions – win a Halloween goody bag. Please park at Churchill School and meet at the picnic tables near the gymnasium. Bring a flashlight. This is a non-scary event. Fee is per child. Adult accompaniment is required, as this is self-guided. Location: Churchill Park, 271 St. Charles Road. Max: 50. (rf)

**R/NR** – \$10/\$15      **Register by:** 10/23  
 117648      F      10/23      6-7pm

## Boo Bash

Trick-or-Treat Trail

October 24 • 10am-11:20am

Ages: 2-8 with Adult

Dress in your costume and join us for a spooky good time! Enjoy the Trick-or-Treat trail full of your favorite characters and goodies for all! The trail will end with a pumpkin patch for each child to bring a pumpkin home to decorate. Location: Maryknoll Park, 845 Pershing Avenue. Min/Max: 25/50 per group. (ts)

**R/NR:** \$6/\$10  
 117441      Sa      10/24      10-10:20am  
 118412      Sa      10/24      10:30-10:50am  
 118413      Sa      10/24      11-11:20am

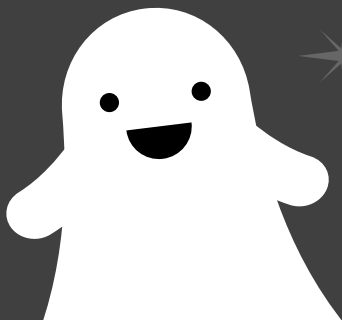
## Ackerman Woods Spook Trail

October 30 • 5pm-9pm

Ages: 7 & Up

Join us for a spooktacular evening featuring a spook trail and other events including face painting, Halloween-themed games, food and drinks for purchase from local food vendors, and pumpkin carving at an additional cost. Location: Ackerman Park, 800 St. Charles Road. (sl)

**R/NR:** \$5  
 117746      Sa      10/30      5-9pm





# Platform Tennis

845 Pershing Avenue, Glen Ellyn (within Maryknoll Park)

Platform tennis is the only racquet sport that players can enjoy outdoors in any climate. This fun and social game can be played at any time, day or night. You don't need to have prior knowledge of the game as it's easy to learn. The game is primarily played in the winter and is geared toward 4 players.

## Learning the Game

The Glen Ellyn Park District offers adult and junior lessons for beginning through advanced and travel players. Whether you're looking to learn the game or enhance your skills, our Platform Tennis Professional can help with both.

## The Courts

The Glen Ellyn Platform Tennis Facility is a year-round public facility featuring:

- Six courts with outside decking
- "Paddle Hut" to accommodate members who wish to socialize inside a warming facility while waiting for their match or just to socialize while watching games.

The courts are made of aluminum decking with added grit to assist with traction. An under-the-court heating system was installed to melt ice and water off the

aggregate deck surface, allowing members to play outdoors in all weather conditions. The heaters are NOT meant for warming players and should never be used when the courts are dry.

Each court is about one quarter of the size of a tennis court and is surrounded on all four sides by a 12' high superstructure with taut, 16-gauge "chicken wire" fencing which allows the players to play the ball off the screens. Lighting allows play until 11pm.

## The Equipment

Platform Tennis is played with special paddles that differ in size and shape from tennis racquets. The paddles are made of a composite material with a specific number of aerodynamic holes drilled into the head and can be no more than 18 inches long. The paddle ball is made of a spongy rubber material and are 2.5 inches in diameter. A flocking material on the exterior keeps the ball from skidding.

Our Platform Tennis Pro can assist you with all your equipment needs. Contact Mark Cunningham at [gepaddlepro@gmail.com](mailto:gepaddlepro@gmail.com).



## Meet Our Platform Tennis Pro

Mark Cunningham returns this year as the Platform Tennis Professional. Mark comes to the Park District highly skilled in the sport of platform tennis as well as tennis. USPTA and PPTA certified, Mark has over 6 years experience in coaching platform tennis and is currently ranked in the top 40 in the nation for platform tennis.

Mark oversees the Platform Tennis program, which includes assisting with the Monday Night League, the Men's and Women's Travel Team program, and developing the juniors program. Mark will instruct all clinics and drills and will be available for private and group lessons. Mark also serves as the Park District's Head Tennis Professional, teaching hundreds of students the sport of tennis this past summer.

**CONTACT:** [gepaddlepro@gmail.com](mailto:gepaddlepro@gmail.com)

# Platform Tennis Memberships

The Glen Ellyn Platform Tennis program offers flexible opportunities to get you out on one of our six (6) courts, in lessons or in a league. The annual Platform Tennis membership runs from September 3, 2020, thru August 31, 2021. Please note that four courts will be reserved for the Glen Ellyn Platform Travel Club on Tuesday, Wednesday, and Thursday evenings from October-March.

Due to the closing of our courts during the COVID 19 State mandate, payment for returning 2019/2020 members will not be due until. Your current reservation number and key card will remain active through October 15.

- No additional court fees to play year-round.
- Unlimited access to court time when not programmed with leagues, lessons or events.
- Access to the “Paddle Hut” between 7am and 11pm.
- Privilege of making court reservations 7 days in advance.
- Discount on lessons.

## 2020-2021 Membership Fees

Type	Resident	Nonresident	Add'l Child
<b>Adult (18 &amp; Up)</b>	\$260	\$310	-
<b>Junior (6-17)</b>	\$50	\$75	-
<b>Family</b>	\$500	\$590	\$15/child

*Includes 2 adults (same household) or 2 adults and 2 children (age 17 & under) per household. Youth members must be accompanied by an adult and do not receive a key to the “Hut.”*



## Platform Tennis Clinics & Exhibition

**September 18 • 5 to 8:30 p.m.**  
**Free, Pre-Registration Required**

Ages: 6 & Up

Learn the game of Platform Tennis and how to become involved in the program. Several of the area’s top platform tennis professionals will be on hand to provide instruction on grips, rules and strategies. Clinic ends with a Pro Exhibition and open play from 8pm-9pm. Location: Maryknoll Park Platform Tennis Courts, 845 Pershing Avenue. (md)

<b>Juniors (6-17)</b>	5pm-6pm	Code 117380
<b>Ladies (18+)</b>	6:15pm-7:15pm	Code 117381
<b>Men (18+)</b>	7:30pm-8:30pm	Code 117382



## Adult Outdoor Pickleball Clinics

**September 19 • 9:30am or 10:45am**  
**Free, Pre-Registration Required**

Ages: 18 & Up

Location: Village Green Park, 130 S. Lambert Road.

- 9:30am-10:30am, Code 117391
- 10:45am-11:45am, Code 117392

# Classes

Location: Maryknoll Park Platform Tennis Courts, 845 Pershing Avenue.  
Instructor: Mark Cunnington.



## WOMEN'S & MEN'S

### Quick Start Paddle

Ages: 18 & Up

This crash course will get you ready for the season. Grab a friend or two and sign up with our pro. You will learn the basic paddle shots in this fun and fast paced lesson. Min/Max: 6/8. (md)

**M/NM**—\$125/\$150

Women's

117385 M 9/28-10/26 6-7pm

Men's

117385 Tu 9/29-10/27 6-7pm

## WOMEN'S & MEN'S

### Beginner Paddle Boot Camp

Ages: 18 & Up

Ready to get out and try paddle tennis? This two-hour boot camp will go over the basics, including grips, technique and strategy. The program will end with you playing paddle like a pro! Min/Max: 6/8. (md)

**M/NM**—\$50/\$70

Women's

117387 Tu 10/6 6-8pm

Men's

117388 W 10/7 6-8pm

### Kid's Paddle & Pizza

Ages: 5-14

Jump into this popular program. Come out and play some paddle at Maryknoll Park. You will learn skills and drills, play a few games and then head inside for some pizza! Our Paddle Pro is sure to make this class a blast! Min/Max: 4/16. (md)

**R/NR**—\$125/\$130

117389 M 10/19-11/16 4:30-6pm

117390 Tu 10/20-11/17 4:30-6pm

# Leagues

Location: Maryknoll Park Platform Tennis Courts, 845 Pershing Avenue.  
Instructor: Mark Cunnington.

### Monday Fall In-House League

Ages: 21 & Up

This league is designed to help introduce new players to the game and enhance the experience for advanced beginners. All games are played in Glen Ellyn on our own courts. Players will be ranked by our Platform Pro and placed into beginning or advanced beginning teams. Must hold a Glen Ellyn Platform Tennis Membership. More advanced players should consider the Glen Ellyn Platform Travel Club. Min/Max: 16/84. (md)

**R/NR**—\$90/\$115

**Register by:** 10/1

117383 M 10/5-12/7 7-10pm

### Wednesday Women's Fall In-House League

Ages: 21 & Up

This league is designed to help introduce new players to the game and enhance the experience for advanced beginners. All games are played in Glen Ellyn on our own courts. Players will be ranked by our Platform Pro and placed into beginning or advanced beginning teams. Must hold a Glen Ellyn Platform Tennis Membership. More advanced players should consider the Glen Ellyn Platform Travel Club. Min/Max: 16/84. (md)

**R/NR**—\$80/\$100

**Register by:** 10/1

117384 W 10/28-12/16 7-10pm

## WOMEN'S & MEN'S

### Travel League

The Glen Ellyn Park District works in conjunction with the Glen Ellyn Platform Tennis Club (GEPTC) to provide travel leagues. The GEPTC Men's Travel program has many teams playing in various levels (series) of play. These teams participate in the Chicago Platform Tennis Charities and South West Leagues. Teams travel to other communities, as well as hosting home matches in the evenings. The Women's Travel League participates in the North Shore and South West Leagues and travels during the day. Please contact Mark Cunnington at gepaddlepro@gmail.com for more information. All travel members must also hold a Glen Ellyn Park District membership.

# Private Lessons

Need help in a specific area? Our Platform Tennis Professional can tailor the class to your specific needs! To get started with lessons, please email Mark Cunnington at gepaddlepro@gmail.com. Pricing below is listed per person; semi-private lessons are for two players.

Type	M/NM Fee
Private 30-Minute	\$35/\$40
Private 60-Minute	\$70/\$80
Semi-Private 30-Minute	\$18/\$22
Semi-Private 60-Minute	\$35/\$40
3 & A Pro 30-Minute	\$15/\$20
3 & A Pro 60-Minute	\$25/\$30
5 Private 60-Minute Package	\$300/\$360



FRIENDS OF GLEN ELLYN PARKS

# Scholarship Program

**We need your support now more than ever!**

The COVID-19 pandemic has brought financial uncertainty to us all, and certainly, the number of our Glen Ellyn neighbors who are experiencing financial hardship has and will continue to increase.

The Scholarship Program allows residents in need of financial assistance to apply for reduced and/or no-fee recreation and athletic programs, and will be vital in helping our neighbors in need get back to a sense of normalcy, connectedness, and community. In the last year, over 200 Glen Ellyn families were assisted through this worthwhile program. However, funds are limited and the District anticipates an increase in applications.

## MAKE A DIFFERENCE TODAY

The program is funded through generous donations from residents and local businesses and through fundraising activities. Anyone can make a donation of \$1 or more to the scholarship program by adding the donation amount to their activity registration form, when they register online, or at [www.gepark.org/register](http://www.gepark.org/register).





845 Pershing Avenue  
Phone: (630) 469-7888

# holes & knolls

## MINI GOLF

Holes & Knoll Mini Golf is open for date-specific, timed-entry during *Phase 4: Revitalization* to ensure safe attendance levels (walk ups allowed, but subject to availability). Reservations may be made up to 7 days in advance. Visit [gepark.org/minigolf](http://gepark.org/minigolf) for current hours and to make reservations. \$5/person for 18 holes.

**\$5**  
for 18 holes

## HOW IT WORKS

- 1 Make a reservation to play either the Red or Blue course by visiting [gepark.org/redcourse](http://gepark.org/redcourse) or [gepark.org/bluecourse](http://gepark.org/bluecourse).
- 2 Use the drop-down at the top of the page to select the date for which you would like to make a reservation.
- 3 Find the correct start time in the left-hand column.
- 4 Click on "Reserve," enter information for the first golfer in your group, then hit "Submit Reservation." Complete these steps for each golfer in your group. Only 30 golfers will be accepted for each start time.

## FACILITY RULES AND SAFETY MEASURES DURING PHASE 4: REVITALIZATION

- Patrons must wait outside on the social distancing markers until directed into the facility. Please adhere to the entrance/exit signs.
- Face coverings are required for all patrons over the age of 2. *The only exception to this is if the patron has an underlying medical condition that prevents them from wearing a face covering. Please include in notes.*
- Up to four golfers will be allowed per hole.
- Golfers must complete all 18 holes within 50 minutes.
- Adult must be present for children under 12.
- Restrooms are closed to the public during *Phase 4: Revitalization*.

# splash park

AT MARYKNOLL PARK



The Splash Park is open for date-specific, timed-entry during Phase 4: Revitalization to ensure safe attendance levels (walk ups allowed, but subject to availability).

## Splash Park Reservations

Reservations may be made up to 7 days in advance at [gepark.org/splash](http://gepark.org/splash) for current hours.



## Splash Park Fees

Child Admission (Ages 1-14).....\$3  
 Adult Admission.....\$1

## FACILITY RULES AND SAFETY MEASURES DURING PHASE 4: REVITALIZATION

- 50-person capacity per 1.5-hour session
- Reservations are required for EVERY individual entering the gate and utilizing space. This includes children ages 12 months to 10 years and adults.
- Late arrivals: after 20 minutes from the start time, patrons will lose their reserved spot.
- Admission: \$3 per child (ages 12 months-10 years) and \$1 per adult (ages 16+)
- Parties/celebrations are not allowed inside the splash park.
- Face covering must be worn when checking in and when social distancing is not possible.
- Due to COVID-19, no toys, buckets, or cups are allowed in splash park to avoid sharing.
- Please do not use a table unless you are a group of 3 or more. Chairs are available for smaller groups.
- No outside food or coolers are allowed in splash park. Personal water bottles are recommended.
- All children under the age of 10 must always have adult supervision.
- Swimsuits and appropriate swim attire required.
- Swim diapers are required for babies that are not toilet trained.
- All persons using the splash park do so at their own risk and sole responsibility.

## Classes

### Youth Archery

Ages: 12-16  
 Certified Archery Instructors Jim and Kandy will teach the joy of Archery in a fun, safe and educational environment. Exciting drills and fun games will be implemented in this clinic. Recurve bows, blunt tipped arrows and targets will be provided. Please meet in the outdoor Pavilion at Maryknoll Park, 845 Pershing Avenue. Min/Max: 5/10. (md)

R/NR-\$15/\$20

118431	Sa	8/15	1-2:15pm
117751	Sa	9/19	1-2:30pm
117752	Sa	10/10	1-2:30pm

### Adult Archery

Ages: 17 & Up  
 Certified Archery Instructors Jim and Kandy will teach the joy of Archery in a fun, safe and educational environment. Exciting drills and fun games will be implemented in this clinic. Recurve bows, blunt tipped arrows and targets will be provided. Please meet in the outdoor Pavilion at Maryknoll Park, 845 Pershing Avenue. Min/Max: 5/10. (md)

R/NR-\$15/\$20

118431	Sa	8/15	2:30-3:45pm
117749	Sa	9/19	2:45-4:15pm
117750	Sa	10/10	2:45-4:15pm



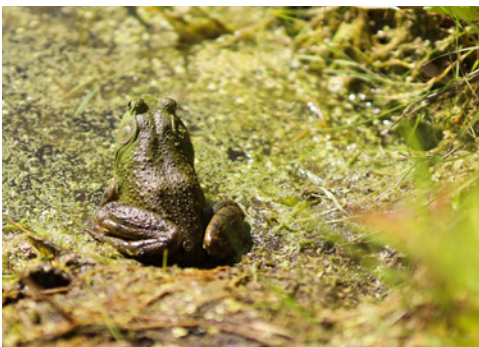
# Around the District







CHECK OUT SOME OF THE PHOTOS CAPTURED AT  
 GLEN ELLYN PARK DISTRICT PROGRAMS, PARKS, AND  
 FACILITIES! SEE MORE BY FOLLOWING US ON  
**FACEBOOK, INSTAGRAM, OR TWITTER.**





# Preschool

## Our Philosophy & Curriculum

At our Preschool, children learn through an academic and play-based curriculum to facilitate learning concepts including writing, science, vocabulary, numbers, shapes, math, and other cognitive abilities. The academics incorporated into the program will ensure students are prepared to move to the next level and eventually be Kindergarten-ready.

Our program is a mixture of teacher-guided activities and playtime, with small and large group activities based around a weekly theme. Children engage in fine and large motor skill activities, art projects, music, books, dramatic play, cooking, writing and more. Children also have monthly visits from B#Sharp Music for Children and the Park District Naturalist.

### Contact

Jeannie Robinson  
Email: [jrobinson@gepark.org](mailto:jrobinson@gepark.org)  
Phone: (630) 942-7267

### 2-Year-Olds Age 2 as of 6/15/20

Geared toward having a successful first school-away-from-parent experience while preparing for the three-year-old program. Emphasis is placed on socialization skills and introduction to a structured class.

### 3-Year-Olds Age 3 as of 9/1/20

Geared toward having a successful first school experience. Emphasis is placed on social skills, fine motor skills, shapes, colors, name recognition, following direction, sharing and play. Must be able to use restroom independently.

### 4-Year-Olds Age 4 as of 9/1/20

Designed for developing kindergarten readiness. Emphasis is placed on the development of academics through structured activities, introducing math, lower/upper case letters, letter sound recognition, writing/site words, and developing independence. Must be able to use restroom independently.

### 5-Year-Olds

**Must turn 5 between 9/1/20-1/1/21**

Designed for developing kindergarten readiness. Emphasis is placed on the development of academics through structured activities, simple math, lower/upper case letters, letter sound recognition, writing/site words, punctuation, capitalization, problem solving and developing independence.

## Registration

Registration will be for the complete school year and must be done in person at either the Spring Avenue Recreation Center or Main Street Recreation Center. Parents must submit a copy of their child's birth certificate at the time of their registration. Please contact Jeannie Robinson at (630) 942-7267 to check the status of classes listed.

### Schedule

The 2020-2021 preschool year begins the week of September 8, 2020 and concludes the week of May 14, 2021. Classes will not meet on legal public holidays as determined by the District 41 school calendar. There may be additional dates, which will be stated in your Glen Ellyn Park District Preschool Calendar.

### Payment

Preschool uses automatic billing/ payments. A nonrefundable deposit of \$75 will be required upon registration. The remainder of the yearly fee is divided into equal amounts charged to your credit card or e-check each month (you will be notified of the amounts on the registration form). You may also pay for the entire year at registration.

Age as of 6/15/20	Location	Days/Dates	Time	R/NR Annual or Installment Fees
<i>In case of potty accidents, parents will be notified.</i>				
2	Spring Avenue (Multi B)	Fridays, Sept. 11-May 14	9am-11am	\$561/\$842 annually or \$97.20/\$153.20 five installments
Age as of 3/15/20	Location	Days/Dates	Time	R/NR Annual or Installment Fees
<i>In case of potty accidents, parents will be notified.</i>				
2	Spring Avenue (Multi B)	M/W, Sept. 9-May 12	9am-11am	\$1,122/\$1,683 annually or \$209.40/\$321.60 five installments
2	Spring Avenue (Multi B)	Tu/Th, Sept. 10-May 13	9am-11am	\$1,122/\$1,683 annually or \$209.40/\$321.60 five installments
2	Spring Avenue (Multi B)	Tu/Th, Sept. 10-May 13	11:30am-1:30pm	\$1,122/\$1,683 annually or \$209.40/\$321.60 five installments
Age as of 9/1/20	Location	Days/Dates	Time	R/NR Annual or Installment Fees
<i>Must be potty-trained and able to use the restroom independently.</i>				
3	Main Street (Room 106)	Tu/Th, Sept. 8-May 13	8:45am-11:15am	\$1,320/\$1,980 annually or \$249/\$381 five installments
3	Main Street (Room 106)	M/W/F, Sept. 9-May 14	8:45am-11:15am	\$1,980/\$2,970 annually or \$381/\$579 five installments
3	Main Street (Room 204)	Tu/Th, Sept. 8-May 13	8:45am-11:15am	\$1,320/\$1,980 annually or \$249/\$381 five installments
3	Main Street (Room 204)	M/W/F, Sept. 9-May 14	8:45am-11:15am	\$1,980/\$2,970 annually or \$381/\$579 five installments
3	Spring Avenue (Preschool)	Tu/Th, Sept. 8-May 13	8:45am-11:15am	\$1,320/\$1,980 annually or \$249/\$381 five installments
Age as of 9/1/20	Location	Days/Dates	Time	R/NR Annual or Installment Fees
<i>Must be potty-trained and able to use the restroom independently.</i>				
4	Main Street (Room 114)	M-Th, Sept. 8-May 13	8:45am-11:15am	\$2,772/\$4,158 annually or \$539.40/\$816.60 five installments
4	Main Street (Room 204)	M-Th, Sept. 8-May 13	12:15pm-2:45pm	\$2,772/\$4,158 annually or \$539.40/\$816.60 five installments
4	Spring Avenue (Preschool)	M/W/F, Sept. 9-May 14	8:45am-11:15am	\$2,079/\$3,119 annually or \$400.80/\$608.80 five installments
4	Spring Avenue (Preschool)	M-Th, Sept. 8-May 13	12:15pm-2:45pm	\$2,772/\$4,158 annually or \$539.40/\$816.60 five installments
Must turn 5 between 9/1/20-1/1/21	Location	Days/Dates	Time	R/NR Annual or Installment Fees
5	Main Street (Room 106)	M-F, Sept. 8-May 14	12:15pm-2:45pm	\$3,630/\$5,445 annually or \$711/\$1074 five installments



## Preschool Plus

Age: 3-4

This structured playtime program at Main Street Recreation Center includes free play, crafts, games and gym time for your little one to further explore school.

Register from one to four days per week for the full school year. Billing is on a monthly basis, beginning September 1st. Space is limited per day. Please choose your day(s) upon registration. Registration forms are available at Main Street Recreation Center and Spring Avenue Recreation Center, or by emailing [jrobinson@gepark.org](mailto:jrobinson@gepark.org). Min/Max: 10/16. (jr)

### Full School Year (32 Weeks)

R/NR: \$544/\$816

Code	Day	Date	Time
116057	M	Sept. 14-May 10	11:45am-2:15pm
116058	Tu	Sept. 15-May 11	11:45am-2:15pm
116059	W	Sept. 16-May 12	11:45am-2:15pm
116060	Th	Sept. 17-May 13	11:45am-2:15pm

## Kindergarten Enrichment

Age: 5-6

Must be born by September 1, 2015 and enrolled in Kindergarten.

The Glen Ellyn Park District offers a quality enrichment experience for Kindergarten-age children attending half-day Kindergarten. This popular program, held at Main Street Recreation Center, is designed to enrich and enhance the regular district Kindergarten program in the areas of motor skills, language arts, music, and creative arts. The goal is to allow each child to mature academically and socially in a creative, encouraging, and challenging learning environment.

Classes offer a balance of both structured and unstructured activities. Activity areas to choose from include blocks, quiet time, dramatic play, small and large motor activities as well as areas for music, art, literacy and science/discovery. Children must turn five by September 1, 2020 in order to register for this class. We will provide a space for kids to eat lunch after (AM) or prior (PM) to KE. Please send a sack lunch if you plan to have your child eat lunch at KE. Min/Max: 10/16. (jr)

R/NR: \$1,716/\$2,574

Code	Day	Date	Time
116074	Tu & Th	Sept. 8-May 13	8:45am-11:30am
116075	Tu & Th	Sept. 8-May 13	12:30pm-3:15pm
116076	M & W	Sept. 9-May 12	8:45am-11:30am
116077	M & W	Sept. 9-May 12	12:30pm-3:15pm



# Adventure Time

## Before & After School Care

This program is located at Forest Glen and Churchill Elementary Schools. Adventure Time staff provide supervised recreational activities, allowing time outside and indoors for students to unwind or gear up with sports, arts & crafts, and games. Quiet time is available for homework and relaxing with friends new and old.

### Registration

Registration will be for the complete school year (August-June). Children may be signed up for 3, 4 or 5 days a week; mornings or afternoons. Parents, you may choose which days of the week you wish to use. Children in kindergarten are welcome to enroll, but only for the AM session if they attend AM kindergarten or the PM session if they attend PM kindergarten. Min/Max: 15/25 per day.

### Payments

Adventure Time uses automatic billing/payments for nine months during the school year. A nonrefundable deposit of \$50 will be required upon registration. Payments will be charged to your credit card on the 1st of each month, with the first month due September 1st and concluding with the last payment on May 1st.

#### FOREST GLEN ELEMENTARY SCHOOL (501 Elm Street, Glen Ellyn)

Days Per Week	7am-8:30am	3:30pm-6pm	Deposit Code
3 Days	\$117	\$195	116783
4 Days	\$156	\$260	116783
5 Days	\$195	\$325	116783

#### CHURCHILL ELEMENTARY SCHOOL (240 Geneva Road, Glen Ellyn)

Days Per Week	7am-8:30am	3:30pm-6pm	Deposit Code
3 Days	\$117	\$195	116784
4 Days	\$156	\$260	116784
5 Days	\$195	\$325	116784

### Parent Information Packet

A program information packet will be emailed by the first week of August. For more information, please contact Jeannie Robinson at [jrobinson@gepark.org](mailto:jrobinson@gepark.org) or (630) 942-7267.

### Key Dates, Holidays, What to Bring, & More

#### START DATE:

First regular day of school (District 41 calendar).

#### END DATE:

Final day classes are in session (District 41 calendar).

#### ADVENTURE TIME WILL NOT MEET:

Adventure Time will not meet on legal public holidays as determined by the District 41 school calendar or over Thanksgiving, Winter, and Spring breaks.

#### EARLY DISMISSAL & TEACHER INSTITUTE DAYS:

On early dismissal days, children will be dismissed to the Adventure Time room. On teachers' institute days Adventure Time will be operating at Forest Glen only (Churchill children should be dropped off at Forest Glen on these days) and will be available from 7am-6pm. Please provide a lunch. Special events and activities are planned on SIP and Teacher Institute days, more information will be provided in each month's newsletter. Subject to change based on D41 schedules and space availability.

#### WHAT TO BRING:

Please provide a snack for both AM and PM participants, time will be allotted for children to eat before and after school.

# Early Childhood Interest

## PROGRAM SUPERVISORS

Jeannie Robinson (jr): [jrobinson@gepark.org](mailto:jrobinson@gepark.org), (630) 942-7267

Renae Frigo (rf): [rfrigo@gepark.org](mailto:rfrigo@gepark.org), (630) 858-6037 x 6006

Taylor Stirmell (ts): [tstirmell@gepark.org](mailto:tstirmell@gepark.org), (630) 942-7264



## Nature Outings

Ages: 2-5 with Adult

Explore nature in the fall. Each class will feature a different topic supported by stories, crafts, and an easy exploratory hike. Join us for one or all the sessions. Registration will close the Friday prior to each session date. Min/Max: 4/12. (rf)

### Pollinators at Maryknoll Park

117649 F 9/11 10-11am \$10R/\$15NR

### Spiders at Churchill Park

117650 F 9/25 10-11am \$10R/\$15NR

### Pond Animals at Ackerman Woods

117651 F 10/9 10-11am \$10R/\$15NR

### Oak Trees at Lake Ellyn Park

117652 F 10/23 10-11am \$10R/\$15NR

## Stay & Play Open Gym at Spring Avenue

Ages: Walking to Preschool  
Join us for playtime in the Spring Avenue Gymnastics Center, 185 Spring Avenue. Pre-registration is not required but come early as space is limited to the first 50 participants. Children must be accompanied and supervised by an adult. Please pay at the Spring Avenue Recreation Center front desk. (ch)



**Days:** Tuesday & Fridays

**Dates:** Sept. 8-Oct. 23

**Time:** 9-11am

**Daily Drop-in:** \$5R/\$8NR

**10-Visit Punch Card:** \$35R/\$65NR



## Boo Bash Trick-or-Treat Trail

**October 24 • 10am-11:20am**

Ages: 2-8 with Adult

Dress in your costume and join us for a spooky good time! Enjoy the Trick-or-Treat trail full of your favorite characters and goodies for all! The trail will end with a pumpkin patch for each child to bring a pumpkin home to decorate. Location: Maryknoll Park, 845 Pershing Avenue. Min/Max: 25/50 per group. (ts)

**R/NR:** \$6/\$10

117441	Sa	10/24	10-10:20am
118412	Sa	10/24	10:30-10:50am
118413	Sa	10/24	11-11:20am

### SHINING STAR PRODUCTIONS

## Little Actors Club

Ages: 3-6

Children love this innovative drama class that develops their imagination and introduces them to the performing arts in a fun and creative atmosphere. Each week is a new and exciting adventure into the imagination with changing themes, music, costumes, props, and playbills. Participants learn theater terms and a new joke every week. Location: Main Street Recreation Center, 501 Hill Avenue. Min/Max: 7/16. (ts)

**R/NR:** \$91/\$136

117573	W	9/2-10/21	5:30-6:15pm
117574	Th	9/3-10/22	12:30-1:15pm



## Safe Kids

Ages: 3-5

This interactive class focuses on thinking safely and making safe choices in and around the home. Kids learn what to do in an emergency, when to call 911 and how to deal with strangers. Instructor: Tracy Gustello. Location: Spring Avenue Recreation Center, 185 Spring Avenue. Min/Max: 6/12. (jr)

**R/NR:** \$25/\$37

**Register By:** 9/9

117656 W 9/16 4:15-5:15pm

## Safe Kids with First Aid

Ages: 3-5

Safety and first aid go hand in hand! Children learn simple rules to think safely and make safe choices at home and away. We also present basic first aid information, including treatment of small cuts, bumps and bruises, nosebleeds, minor burns and more. Each child receives a safety packet and creates a small first aid kit to take home. Instructor: Tracy Gustello. Location: Spring Avenue Recreation Center, 185 Spring Avenue. Min/Max: 6/12. (jr)

**R/NR:** \$25/\$37

**Register By:** 9/9

117657 W 9/16 5:30-6:30pm

**MUSICREATORS**

## Sing with Me

Ages: 1-4 with Adult

In a world filled with “be-alone” activities, are you looking to spend more one-on-one fun filled quality and engaging times with your children? Each music class is filled with fun and developmentally appropriate activities that will stimulate your child’s imagination and improve their increasing vocabulary. You will SING! You will PLAY! You will LAUGH! Experiencing music through a child’s eyes, you will share their joy and wonder giving them and yourself a gift for life. Every session is filled with new songs and new activities. Location: Main Street Recreation Center, 501 Hill Avenue. Min/Max: 5/12. (ts)

**R/NR:** \$76/\$114

117571 Tu 9/8-10/13 9:45-10:20am

**MUSICREATORS**

## Songs of the Season

Ages: 3-5 with Adult

This fun-filled class is designed to nurture the growing independence of the 3 through 5-year olds. Activities will include singing, instrument playing, chants and rhymes, listening activities, group dancing, as well as literature and stories to creatively bring to life on xylophones as well as percussion instruments. This 40-minute class teaches musical concepts through songs, stories, movement, and instrumentation, all hands on and centered on the current season, outdoor fun, and concepts of nature! Location: Main Street Recreation Center, 501 Hill Avenue. Min/Max: 5/12. (ts)

**R/NR:** \$88/\$132

117572 Tu 9/8-10/13 11-11:40am



**ROCK N' KIDS**

## Tot Rock

Ages: 12 Months with Adult

Wiggle and giggle to the Tot Rock beat! An introductory music and movement class with a large sensory component, tots will use hand-held rhythm instruments and play props to improve their motor skills and coordination and learn new songs and rhymes. While kick starting your tot’s imagination, each class will provide structured and unstructured time to explore. A different educational theme presented each session. Location: Main Street Recreation Center, 501 Hill Avenue. Min/Max: 4/12. (ts)

**R/NR:** \$64/\$96

117568 F 9/11-10/16 9:30-10:10am

**ROCK N' KIDS**

## Kid Rock

Music fun that can’t be “beat!” Each Kid Rock class includes creative, energetic activities based on a new educational theme each session! Children learn new songs, rhymes, and gross motor skills while using rhythm instruments and movement props. Your child’s listening skills will develop, while fine motor and coordination improve through imaginative play and sensory integration. Location: Main Street Recreation Center, 501 Hill Avenue. Min/Max: 4/12. (ts)

**R/NR:** \$64/\$96

*Kid Rock I - Age 2 with Adult*

117569 F 9/11-10/16 10:15-10:55am

*Kid Rock III - Ages 1-5 with Adult*

*Second child receives a \$12 discount*

117570 F 9/11-10/16 11-11:40am

**MUSIC TOGETHER**

## Music Together Family Classes

Ages: 6 & Under with Adult

Experienced instructors will guide you and your child(ren) as you sing, dance, move, laugh, play instruments and more! They will be practicing large and small motor skills, developing emotional, social and classroom skills, expanding their verbal and cognitive skills. Each semester introduces a new song collection. Tuition includes CD and digital download of the music we use in class and an illustrated songbook. Second child: \$50 discount. Location: Main Street Recreation Center, 501 Hill Avenue. Min/Max: 6/12. (ts)

**R/NR:** \$189/\$283

117575	M	9/14-11/9	9:15-10am
117576	M	9/14-11/9	10:15-11am
117577	M	9/14-11/9	11:15am-12pm
117578	Tu	9/15-11/10	9:15-10am
117579	Tu	9/15-11/10	10:15-11am
117580	W	9/16-11/11	9:15-10am
117581	W	9/16-11/11	10:15-11am
117582	Th	9/17-11/12	9:15-10am
117583	Th	9/17-11/12	10:15-11am
117584	Sa	9/19-11/14	9:15-10am
117585	Sa	9/19-11/14	10:15-11am







#### MUSICREATORS

### Virtual: Sing with Me

Ages: 1-4 with Adult

Enjoy children's music classes with green screen animation so we can virtually go anywhere the music tells us to go from the comfort of home. These fun high energy music classes are activity packed, entertaining and give children a positive, creative way to express themselves. Children thrive in music classes singing songs, dancing, and playing instruments (suggestions are given on using household items as instruments). You will receive an email each week with a link to 2 videos approximately 12-15 minutes each. You can play them when you want as often as you want. Registered participants will receive an email each Thursday by 9:30 a.m. with that week's private pre-recorded virtual classes. Fee is per household. Siblings are free. (ts)

R/NR: \$60/\$90

118612 Th 9/23-10/29

# Youth Interest

## **PROGRAM SUPERVISORS**

Jeannie Robinson (jr): [jrobinson@gepark.org](mailto:jrobinson@gepark.org), (630) 942-7267

Renae Frigo (rf): [rfrigo@gepark.org](mailto:rfrigo@gepark.org), (630) 858-6037 x 6006

Taylor Stirmell (ts): [tstirmell@gepark.org](mailto:tstirmell@gepark.org), (630) 942-7264



## Giving Trees

Ages: 5-12

Learn about a few of our local trees, what makes them special, and why they are important. We will go on a tree scavenger hunt, search for animals using trees, and create an ornament to hang on a tree at your home. Location: Ackerman Park, 800 St. Charles Road. Min/Max: 5/15. (rf)

**R/NR:** \$10/\$15 **Register By:** 9/4  
117653 Sa 9/12 1-2:30pm

### DISCOVERY LANGUAGE

## Spanish for Kids

Ages: 4-10

This carefully developed curriculum will engage your child to learn a new language! Students build oral language skills through games, songs and hands-on activities. All students receive a workbook & CD. Location: Main Street Recreation Center, 501 Hill Avenue. Min/Max: 8/12. No class: 10/12. (ts)

**R/NR:** \$88/\$132  
117547 M 9/14-10/26 5:30-6:15pm

### MAGIC TEAM OF GARY KANTOR

## Magic Class

Ages: 5-12

Children are guaranteed a great time as they learn age-appropriate tricks: cards, ropes, coins, mind-reading and more! The tricks appear difficult but are easy to learn and perform. All materials are provided; each child receives a magic kit to take home. Sign up for more than one session and learn new tricks each time. Location: Spring Avenue Recreation Center, 185 Spring Avenue. Min/Max: 5/30. (ts)

**R/NR:** \$20/\$30  
117548 W 9/30 5:15-6:10pm

### SHINING STAR PRODUCTIONS

## Young Actors Club

Ages: 6-8

Join the fun in this wonderful and fast-paced creative drama class. Each week is a new and exciting adventure into the imagination with changing themes, music, costumes, props, games and playbills. You'll even learn a new joke every week! Most themes are not repeated for two years so "act" now! Learn theater terms, enhance spontaneity, build self-esteem, and have a blast! Location: Main Street Recreation Center, 501 Hill Avenue. Min/Max: 7/16. (ts)

**R/NR:** \$91/\$136  
117551 W 9/2-10/21 6:30-7:15pm

## Youth Archery

Ages: 12-16

Certified Archery Instructors, Jim and Kandy, will teach the joy of Archery in a fun, safe, and educational environment. Exciting drills and fun games will be implemented in this clinic. Recurve bows, blunt tipped arrows and targets will be provided. Please meet in the outdoor pavilion at Maryknoll Park, 845 Pershing Avenue. Min/Max: 5/10. (md)

**R/NR:** \$15/\$20  
118431 Sa 8/15 1-2:15pm  
117751 Sa 9/19 1-2:30pm  
117752 Sa 10/10 1-2:30pm

# Nights Out

## Tween Night

Ages: 8-12

Join friends for an evening of fun games, crafts and pizza for dinner! Ackerman staff will lead participants through sports drills and individual activities within a small group setting and following the Restore Illinois guidelines. Face coverings must be worn during the event. Location: Ackerman SFC, 800 St. Charles Road. Min/Max: 5/50. (cs)

**R/NR:** \$25/\$35  
117741 F 9/25 6-9pm

## Kickball Night

Ages: 8-13

Join us at Ackerman SFC for a night of kickball games. Ackerman staff will separate participants into teams based on age and ability; drinks and treats will be provided. Location: Ackerman SFC, 800 St. Charles Road. Min/Max: 10/25. (cs)

**R/NR:** \$20/\$25  
117743 F 10/9 5-7pm

## Kids' Night Out

Ages: 5-12

Children will enjoy a night out participating in games, activities, and arts and crafts! Location: Ackerman SFC, 800 St. Charles Road. Min/Max: 10/25. (cs)

**R/NR:** \$25/\$35  
117745 F 10/23 6-9pm



## Ackerman Arts and Crafts

Ages: 5-13

Join us as we make a new art project each week including painting birdhouses, necklaces, clay sculptures and more, all you need to bring is your creativity! Location: Ackerman SFC, 800 St. Charles Road. Min/Max: 5/20. (cs)

**R/NR:** \$40/\$50

117742 Sa 9/19-10/10 1-2pm

### YOUNG REMBRANDTS

## Tree House Adventure

Ages: 5-10

Join us for four big days filled with fun and creative action as we explore deep in the Tree House Fantasy Forest. Students tap into their imagination, learning to draw otherworldly creatures like fairies, trolls and a Forest Queen. Artists will become a mythical architect to design and draw the Tree House of their dreams. Students will complete different drawings each day and learn to create beautiful scenery and new masterpieces. Location: Main Street Recreation Center, 501 Hill Avenue. Min/Max: 6/10. (ts)

**R/NR:** \$53/\$80

117554 Sa 9/5-9/26 10:30-11:30am

### YOUNG REMBRANDTS

## Our Favorite Pets

Ages: 5-10

Wonderful things happen when there are animals in the house! Our Artists will decide how the artwork will be colorful as we learn to draw and explore the playful side of our animal best friends in funny cartoon images in all their personality. We'll draw them in relaxed activity or mischievous games. Our workshops are an exciting educational experience perfect for your imaginative child. Location: Main Street Recreation Center, 501 Hill Avenue. Min/Max: 6/10. (ts)

**R/NR:** \$53/\$80

117556 Sa 10/3-10/24 10:30-11:30am

### SEW SIMPLE

## Hand Sewing

Ages: 5-7

Learn hand sewing as you make fun projects with step by step instructions. Participants will learn various hand stitches, how to thread a needle and how to sew on a button in this beginner level class. Sign up with a friend for even more fun! Location: Spring Avenue Recreation Center, 185 Spring Avenue. Min/Max: 3/8. (ts)

**R/NR:** \$20/\$30

Theme: Apple

117549 Tu 9/15 4-5:30pm

Theme: Pumpkin

117550 Tu 10/20 4-5:30pm

### GENERATION.NEXT

## Dale Carnegie's Youth and Leadership Program

Grades: 9-12

Today, the world is more complex, competitive and demanding than ever before. Generation.Next can help teens become more confident and better able to cope with the pressure and stress adolescents face. This program focuses on five key areas critical for future success – building self confidence, enhancing communication skills, interpersonal skill development, teamwork and leadership skills, and effective attitude management. Participants should bring their own lunch. Email [holly.francis@dalecarnegie.com](mailto:holly.francis@dalecarnegie.com) for more information. Location: Spring Avenue Recreation Center, 185 Spring Avenue. Min/Max: 8/15. (md)

**R/NR:** \$249

118435 Sa 9/26 8am-4pm

118436 Sa 10/10 8am-4pm

## Babysitting for Success

Ages: 10-15

Be the best babysitter you can be! In this class, students engage in discussion, role playing and practical experiences to learn diapering, feeding, playing with children, child development, handling emergencies and first aid. Students should bring a snack and a doll to class. Students are awarded certificates upon completion. Resource materials are included. Instructor: Tracy Gustello. Location: Spring Avenue Recreation Center, 185 Spring Avenue. Min/Max: 8/15. (jr)

**R/NR:** \$80/\$120

Code	Dates	Time
117660	9/21, 9/23, & 9/28	21/23: 5-8pm 28: 5-7pm

## CPR/AED & First Aid

Ages: 15 & Up

This Jeff Ellis and Associates certification class includes training and certification for CPR and AED use for adults, children and infants along with first aid techniques. A written test is required to pass the course. Location: Ackerman SFC, 800 St. Charles Road. Min/Max: 5/20. (cs)

**R/NR:** \$20/\$35

117747 Sa 10/24 12-3pm



**BRICKS 4 KIDZ**

## **LEGO® Engineering – Remote Control Mania**

Ages: 6-9

Making it move is the name of the game in this exciting program! Kids will love to see their creations in motion using LEGO® motors, battery packs and wireless remote controls. Each week we will use fascinating and challenging LEGO® components to create dynamic vehicles, inventions, machines and more. As they enjoy the fun of building, students will understand the basic working principles of many ingenious devices that are part of our everyday lives. Location: Main Street Recreation Center, 501 Hill Avenue. Min/Max: 8/16. (ts)

**R/NR:** \$68/\$102

117552 M 9/14-10/5 5-6pm

**BRICKS 4 KIDZ**

## **STEM Workshop – Jurassic Brick Land!**

Ages: 5-9

Are you ready for an adventure of a lifetime? Students will build a world that comes to life with gentle Brontosaurus, ferocious Velociraptor, terrifying T. Rex and more. Each week students will learn fascinating facts about amazing dinosaurs and other extinct animals that roamed the earth and swam the seas during the age of dinosaurs. Our proprietary kits and model plans incorporate gears, axles, motors, battery packs, remote controls and other technic Lego® components. Come learn, build, and play at Jurassic Brick land after school classes! Location: Main Street Recreation Center, 501 Hill Avenue. Min/Max: 8/20. (ts)

**R/NR:** \$67/\$100

117553 M 10/19-11/9 5-6pm

**COMPUTER EXPLORERS**

## **Making Your Own Harry Potter Movie**

Ages: 8-12

What's the next adventure for Harry Potter, Ron and Hermione? You decide! We will create our own Harry Potter™ movie using special movie making cameras and software. As directors and producers, we will work in teams to create our own story and script, build various Harry Potter™ Lego® scenes and film our own movie. We will use graphic editing techniques and stop motion animation, add background noise and music, and show our movie at a private screening on the last day of class. All students will get a copy of their movie after class ends. Location: Main Street Recreation Center, 501 Hill Avenue. Min/Max: 6/10. (ts)

**R/NR:** \$86/\$129

117558 M 9/14-10/5 4:30-6pm

**COMPUTER EXPLORERS**

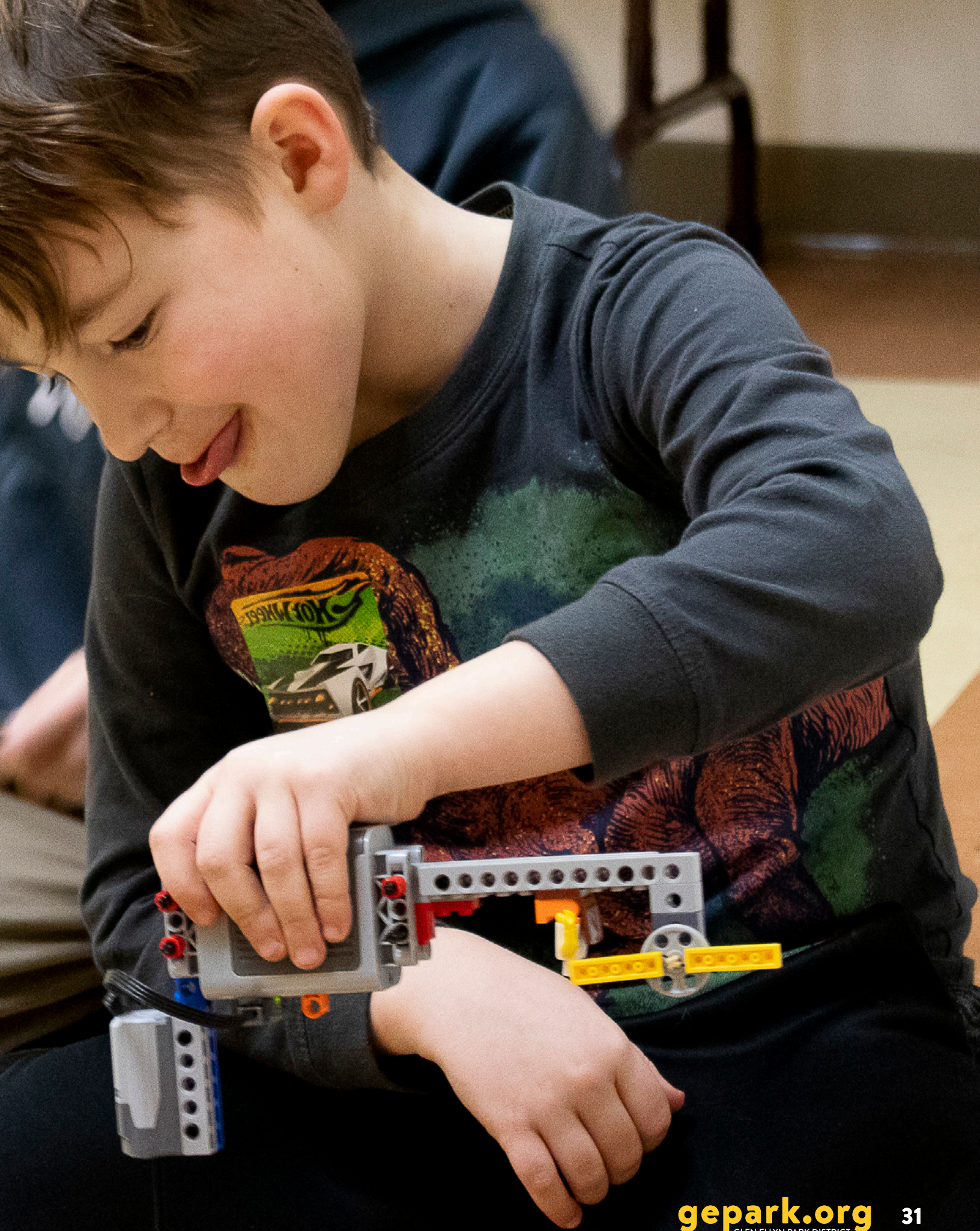
## **Robotics Adventures**

Ages: 6-8

Yes, We CAN learn about Robotics! With the LEGO™ WeDo Robotics System, young children can build and program their own robotic creations. Designed by the experts at MIT, this unique system teaches children about simple machines, engineering, programming and so much more. Young imaginations soar! Students will work together in teams of 2. Location: Main Street Recreation Center, 501 Hill Avenue. Min/Max: 6/10. (ts)

**R/NR:** \$86/\$129

117560 M 10/19-11/9 4:30-6pm





## Piano for Kids - Beginners

Ages: 5-7

Young children, new to the piano, require engaging, age-appropriate instruction combined with whole body movement that inspires a fun and solid understanding of musical concepts. Students will experience movement, singing games, finger exercises and imaginative stories as they apply what they learn to playing the piano. Students should have a piano or keyboard at home. An iPad is helpful, but not necessary, for additional at-home practice. Instructor: Monica Corbett. Location: Main Street Recreation Center, 501 Hill Avenue. Min/Max: 5/8. No class: 10/12, 11/23. (jr)

**R/NR:** \$172/\$258 **Register by:** 9/7

Age: 5

117665 M 9/14-12/14 4:15-5pm

Age: 6-7

117666 M 9/14-12/14 5-5:45pm

117667 M 9/14-12/14 5:45-6:30pm

## Piano for Kids: 1:1 Private Lessons

Ages: 7-14

Start or continue your piano journey as you learn to play fun and challenging songs. Using the Faber Piano adventures curriculum, students will play songs with both hands as they learn about the treble and bass clef, key signatures and tempo with an encouraging and supportive teacher. Student's piano learning is enhanced with theory, chord playing, and improvisation. Instructor: Monica Corbett. Location: Main Street Recreation Center, 501 Hill Avenue. Min/Max: 1/1. No class: 10/12, 10/13, 11/23, 11/24. (jr)

**R/NR:** \$359/\$538 **Register by:** 9/7

117670 M 9/14-12/14 6:30-7pm

117671 Tu 9/15-12/15 4-4:30pm

117672 Tu 9/15-12/15 4:30-5pm

117673 Tu 9/15-12/15 5-5:30pm

117674 Tu 9/15-12/15 6:15-6:45pm

117675 Tu 9/15-12/15 6:45-7:15pm

117676 Tu 9/15-12/15 7:15-7:45pm

## Piano for Kids: 1:2 Semi-Private Lessons

Ages: 6-14

Not quite ready for private lessons? Do you like learning with a friend or sibling? Enjoy the camaraderie of learning with another student in a semi-private piano lesson. Instructor: Monica Corbett. Location: Main Street Recreation Center, 501 Hill Avenue. Min/Max: 2/2. No class: 10/12, 10/13, 11/23, 11/24. (jr)

**R/NR:** \$281/\$422 **Register by:** 9/7

117668 M 9/14-12/14 7-7:30pm

117669 Tu 9/15-12/15 5:45-6:15pm





LISA LOMBARDI

## Perfectionist Poison!

Ages: 6-13

Dreams can come true when we activate our mindset of “Progress, not Perfection”. While there is no “quick fix,” we can secure some positive points by learning the following through hilarious dramatizations and games: positive thought replacement, exposure to famous people who were imperfect and successful, how to build self-esteem, and understanding the origin of perfectionism. Kids will participate in mock role playing of wacky scenarios that result in “safe” imperfections. Souvenirs included for all just for showing up and trying their personal best through observation or participation. Location: Spring Avenue Recreation Center, 185 Spring Avenue. Min/Max: 7/20. (ts)

**R/NR:** \$26/\$39      **Register by:** 9/12  
 117544      Sa      9/19      3-4pm

LISA LOMBARDI

## Halloween Gore-Tastic Lab Hour!

Ages: 6-12

Investigate what makes Halloween so chilling in this electrifying science workshop. Have fun with weird and horrifying Halloween concepts like puking pumpkins, static powered witches, horrific Halloween pranks, blood and bruises, the science of a haunted fall carnival, creepy candy experiments, and more ghoulish Halloween exploration! Kids will have such a blast; they won’t even realize they are acquiring new science concepts! Themed souvenirs included. Location: Spring Avenue Recreation Center, 185 Spring Avenue. Min/Max: 7/15. (ts)

**R/NR:** \$27/\$40      **Register by:** 9/26  
 117545      Sa      10/3      2-3pm

LISA LOMBARDI

## Autumn Outrageous Oobleck Lab!

Ages: 6-12

Scent it, color it, and experiment with it! Oobleck is an insanely FUN science lab experience. It’s perfect for kids who love working with test tubes and textures. We will celebrate the fall season as we mix ingredients to make our Oobleck smell like: Pumpkin Pie, a crisp autumn evening, marshmallow fireside, caramel apples, and more fall sensational scents. Oobleck, named for a gooey substance that fell from the sky in a Dr. Seuss story, is wild and messy fun, so don’t wear your Sunday best to this lab! Location: Spring Avenue Recreation Center, 185 Spring Avenue. Min/Max: 7/20. (ts)

**R/NR:** \$26/\$39      **Register by:** 9/26  
 117546      Sa      10/3      3-4pm

# Adult & Senior Interest

## PROGRAM SUPERVISORS

Chad Shingler (cs): [cshingler@gepark.org](mailto:cshingler@gepark.org), (630) 317-0137

Jeannie Robinson (jr): [jrobinson@gepark.org](mailto:jrobinson@gepark.org), (630) 942-7267

Renae Frigo (rf): [rfrigo@gepark.org](mailto:rfrigo@gepark.org), (630) 858-6037 x 6006

Taylor Stirmell (ts): [tstirmell@gepark.org](mailto:tstirmell@gepark.org), (630) 942-7264

## Guided Nature Walks

**FREE**

Ages: 18 & Up

These casual walks will highlight seasonal natural happenings and held rain or shine. Maximum participants will reflect current health guidelines.

**Churchill Park** F 9/18 9-10am

**Manor Woods/Park** F 10/2 9-10am

## Mindfulness Meditation

Ages: 14 & Up

Train your mind like you train your body for the perfect antidote to daily stress. Learn and practice 3,000-year-old mediation and mindfulness techniques from a Chopra Center Certified Mediation Instructor. Decrease stress, reduce blood pressure, relieve anxiety, improve immunity, and increase your overall sense of well-being. Instructor: Stephanie Frantz. Location: Main Street Recreation Center, 501 Hill Avenue. Min/Max: 3/15. (ts)

**R/NR**-\$65/\$98

117517 Tu 10/20-11/10 12-1pm

## Horsemanship

Ages: 18 & Up

Learn the basics of riding at the “walk and trot,” and the proper ways to groom, tack and handle horses. Riders should wear jeans or Jodhpur pants and hard-soled riding or hiking boots with a small, low heel. Bring an approved riding helmet or bicycle helmet. Location: Dunham Woods Farm, 9N755 Nesler Road, Elgin. Min/Max: 1/4. (ts)

**R/NR**-\$160/\$240

116484 W 8/26-9/30 7-8pm



## CPR/AED & First Aid Certification

Ages: 15 & Up

This Jeff Ellis and Associates certification class includes training and certification for CPR and AED use for adults, children and infants along with first aid techniques. A written test is required to pass the course. Location: Ackerman SFC, 800 St. Charles Road. Min/Max: 5/20. (cs)

**R/NR**-\$20/\$35

117747 Sa 10/24 12-3pm

## Tuesday Cards & Bingo Drop-in Program

Ages: 60 & Up

Drop in for coffee, cards and bingo on the 1st and 3rd Tuesday of each month from 9:30am-11:30am. Newcomers are always welcome! For details, please call Taylor Stirmell at (630) 942-7264. Location: Spring Avenue Recreation Center, 185 Spring Avenue. **R/NR**-\$1. (ts)

## Retired Rhythm Rascals Drop-in Program

**FREE**

Ages: 60 & Up

Traditional Dixieland Jazz rehearsals on Tuesdays at 10am. For details, please call Taylor Stirmell at (630) 942-7264. Location: Main Street Recreation Center, 501 Hill Avenue. (ts)



## AARP Driver Safety Program

Ages: 55 & Up

Become a safer driver by sharpening your defensive driving skills. Our class combines discussion and text. Completion of this program entitles you to a reduction on your automobile insurance premium. No refund after the first meeting. Register online or by calling (630) 858-2463. Instructor: M. Progar. Location: Main Street Recreation Center, 501 Hill Avenue. (ts)

**AARP MEMBER/NON-MEMBER**-\$26/\$39

117516 W-Th 9/9-9/10 12-4pm

## Medicare Information

**FREE**

Ages: 65 & Up

The goal of each presentation is to gain a deeper understanding of Medicare options available to senior population. Instructor: Simon Burke. Location: Spring Avenue Recreation Center, 185 Spring Avenue. Min/Max: 6/30. (ts)

**R/NR**-Free, but registration required

*UHC Medicare Advantage*

117524 Tu 10/20 10-11am

*Aetna Medicare Advantage*

117525 Th 10/29 1:30-2:30pm

## More to Explore:

Adult Dance..... 63  
Family Activities..... 6-9  
Martial Arts ..... 56  
Adult Sports ..... 55



# Day Trips

## Rock of Ages

Ages: 21 & Up

Nominated for five Tony Awards, *Rock of Ages* is back into the iconic music era of the 1950s where rock-n-roll dreamers line up to turn their fantasies into reality. A small-town girl with Hollywood dreams meets a big-city boy chasing his rock-star fantasies on the infamous sunset strip in L.A. With the historic Bourbon Room as the backdrop, their love story unfolds right where the biggest names in rock got their start — all told through the mind-blowing hits of Journey, Bon Jovi, Styx, Poison and more. Fee includes transportation on the Glen Ellyn Park District bus and main floor ticket to the show at Paramount Theater. **Start/end:** Maryknoll Park, 845 Pershing Avenue. Min/Max: 3/7. (ts)



**R/NR**-\$48/\$53

**Register By:** 9/2

117512 W 9/23 12:30-5pm

## Chicago Pizza Tour

Ages: 21 & Up

Stop at three pizza places on this educational and tasty tour. The first stop will be Pizano's in the Loop where the pizzeria has family ties to the creation of the deep-dish pizza back in 1943. Next is Labriola on the Magnificent Mile for deep dish pan style pizza. This pizzeria's founder used his artisanal bread baking background to develop a pan style pizza crust with more depth of flavor. Our last stop is Flo & Santo's in the South Loop for thin crust tavern style pizza and dessert. Fee includes transportation, step on guide, pizza and a soft drink at each stop and dessert. **Start/end:** The Abbey, 407 E. St. Charles Road, Elmhurst. Min/Max: 5/10. (ts)



**R/NR**-\$74/\$79

**Register By:** 9/11

117513 Tu 9/29 10am-3:30pm

## Four Winds Casino

Ages: 21 & Up

Head to the Four Winds Casino, the premier casino in the Midwest, located in New Buffalo, Michigan. It has one of the most sought-after slots ranging in denominations from 1 cent to \$100. Fee includes motor coach transportation, \$10 food credit which can be used toward food purchases at The Buffet, Timbers Fast Food & Deli, Grab N Go, or Hard Rock Café and \$15 instant slot credit. Be sure to bring a valid driver's license or state ID card with you on the day of the trip. If you have a players card, please include the number with your registration. **Start/end:** The Abbey, 407 E. St. Charles Road, Elmhurst. Min/Max: 8/15. (ts)



**R/NR**-\$39/\$44

**Register By:** 9/30

117514 W 10/14 9am-5pm

## Trick-or-Chocolate Halloween Adventure

Ages: 18 & Up

Take a frightfully tasteful trip to Milwaukee! We'll begin our day aboard the bus where our step on guide will share ghost stories through the Historic Third Ward. Next we'll enjoy a sit-down lunch at a historic (and perhaps even haunted) hotel in Harry Houdini's former neighborhood. Then we'll Trick-or-Chocolate through Milwaukee for spooktacular treats with stops at two local chocolatiers where you'll receive in-store samples to enjoy and take-home treats. There will also be a stop to see an art exhibit celebrating the Day of the Dead complete with churros. Fee includes transportation, tour, lunch, Day of the Dead exhibit, and chocolatier samples. **Start/end:** The Abbey, 407 E. St. Charles Road, Elmhurst. Min/Max: 4/8. (ts)



**R/NR**-\$109/\$114

**Register By:** 10/5

117515 W 10/21 8:30am-5:30pm







# Master Moms Talk Series



Ages: 21 & Up

Invite your mom friends and grab your favorite beverage (we suggest wine!) for an evening of learning. Listen to some of our favorite speakers on topics to which every mom can relate and benefit. All links and tools needed for the talk series will be emailed a week prior.

Presented in partnership with Glen Ellyn Moms Village. Sponsored by Lukins McCollum. (ts)

## Virtual: Meal Planning with Marcel's Culinary Experience

We will talk meal planning, how to prep and plan ahead, share recipes, and much more. By the end, you will have the strategies needed to make meal planning a success. Let's get cooking with help from Marcel's!

**R/NR-\$10**

117566    W    9/23    7:30-9pm

## Virtual: Creating Change & Breaking Gender Stereotypes

Join us for the Glen Ellyn book launch of Jodi Norgaard's first book, "More Than a Doll - How Creating a New Brand of Dolls Turned into a Fight to End Gender Stereotypes," which will be released on October 1st, 2020.

**R/NR-\$10**

117567    W    10/14    7:30-9pm

# Let's Do Lunch!

## Senior Luncheons



Ages: 60 & Up

Join us for a delicious meal, fun activities and great company! For an additional \$2, the Park District bus will pick you up and drop you off at your home (Glen Ellyn only). You will be contacted the day before with your approximate pick-up time. Pick-ups will begin at 10:15am. Register over the phone by calling (630) 942-7264.

### Fall Fun Senior Luncheon

Join us for Italian beef sandwiches, potato salad, and fresh garlic bread with rolls. Afterwards, we will have a fall presentation on fall prevention. We play card games. Location: Marykhor Clubhouse, 845 Pershing Avenue. (ts)



R/NR-\$10	Register By: 9/1
117526 Tu 9/8	12-2pm

### Oktoberfest Senior Luncheon

Celebrate fall with our Oktoberfest themed luncheon. We will have German inspired food and play board games for prizes. Location: Marykhor Clubhouse, 845 Pershing Avenue. (ts)



R/NR-\$10	Register By: 10/6
117527 Tu 10/13	12-2pm





# Native Tree & Shrub Sale

**Orders due Friday, September 18**  
**Pick up on Saturday, September 26**

Looking to add a tree or shrub to your yard? Consider a native species that requires less maintenance, is adapted to our regional climate, and supports wildlife. The Park District, The Conservation Foundation and the Glen Ellyn Environmental Commission are partnering to offer this opportunity.

Plants come in a five-gallon sized container and should be able to fit in most standard vehicles for transporting home. Orders are due by Friday, September 18. Pick-up will be on Saturday, September 26 between 9am to 11am at Sunset Park and Pool, 483 Fairview Avenue, Glen Ellyn.



**View the tree and shrub list and download  
the order form at [gepark.org](http://gepark.org)**



# Self-Guided Park Tours

**Churchill Park:** No swingsets or slides here! What you'll find is more than 23 acres of woodland, wetland, prairie, trails, and boardwalks. Take a self-guided journey through this living landscape, located at 271 St. Charles Road, to enjoy some sunshine and recharge. Delight in the hundreds of species of native plants and wildflowers, listen for a loud eep! as a Green Frog leaps away from the embankment as you pass, and see if you can spot a muskrat.

**Ackerman Woods:** To access the woodland loop trail at Ackerman Park, park in the main lot of Ackerman Sports & Fitness Center. Then head back towards St. Charles Road by following the sidewalk along the entrance road. The wood-chipped trail is on the west side of the park entrance road, across from Parkview Church.

Download the self-guided tours at [gepark.org/tours](https://gepark.org/tours)



# Nature Programs

## Nature Outings

Ages: 2-5 with Adult

Explore nature in the fall. Each class will feature a different topic supported by stories, crafts, and an easy exploratory hike. Join us for one or all the sessions. Registration will close the Friday prior to each session date. Min/Max: 4/12. (rf)

### Pollinators at Maryknoll Park

117649 F 9/11 10-11am \$10R/\$15NR

### Spiders at Churchill Park

117650 F 9/25 10-11am \$10R/\$15NR

### Pond Animals at Ackerman Woods

117651 F 10/9 10-11am \$10R/\$15NR

### Oak Trees at Lake Ellyn Park

117652 F 10/23 10-11am \$10R/\$15NR

## Bat and Moth Hike

FREE

Ages: All

Join us as the sun sets for a hike to search for a few winged creatures of the night. Learn about bats and common moth species. We will set up a lighted "bug sheet" to see if we can attract moths while we are on our walk. Free but please register. Maximum participants will reflect current health guidelines. Location: Churchill Park, 271 St. Charles Road. (rf)

R/NR-Free, but registration required

117655 F 9/11 7-8pm

## Giving Trees

Ages: 5-12

Learn about a few of our local trees, what makes them special, and why they are important. We will go on a tree scavenger hunt, search for animals using trees, and create an ornament to hang on a tree at your home. Location: Ackerman Park, 800 St. Charles Road. (rf)

R/NR: \$10/\$15

Register by: 9/4

117653 Sa 9/12 1-2:30pm

## Ghost Hunt

Ages: All

Join us for a sunset hike to search for hidden ghosts throughout Churchill Park. Successfully find the ghosts and answer a few nature trivia questions – win a Halloween goody bag. Please park at Churchill School and meet at the picnic tables near the gymnasium. Bring a flashlight. This is a non-scary event. Fee is per child. Adult accompaniment is required, as this is self-guided. Location: Churchill Park, 271 St. Charles Road. Max: 50. (rf)

R/NR-\$10/\$15

Register by: 10/23

117648 F 10/23 6-7pm

## Oak Tree Celebration

FREE

Ages: All

Take a tree tour around the park and learn about the importance of biodiversity and the beneficial attributes of specific trees, with a special focus on oaks. Help decorate several of our oaks for the month of "OAKTOBER" to help bring more awareness of this important local species. Free but please register. Maximum participants will reflect current health guidelines. Location: Lake Ellyn Park, 645 Lenox Road. (rf)

R/NR-Free, but registration required

117654 Sa 10/3 10-11:30am

## Guided Nature Walks

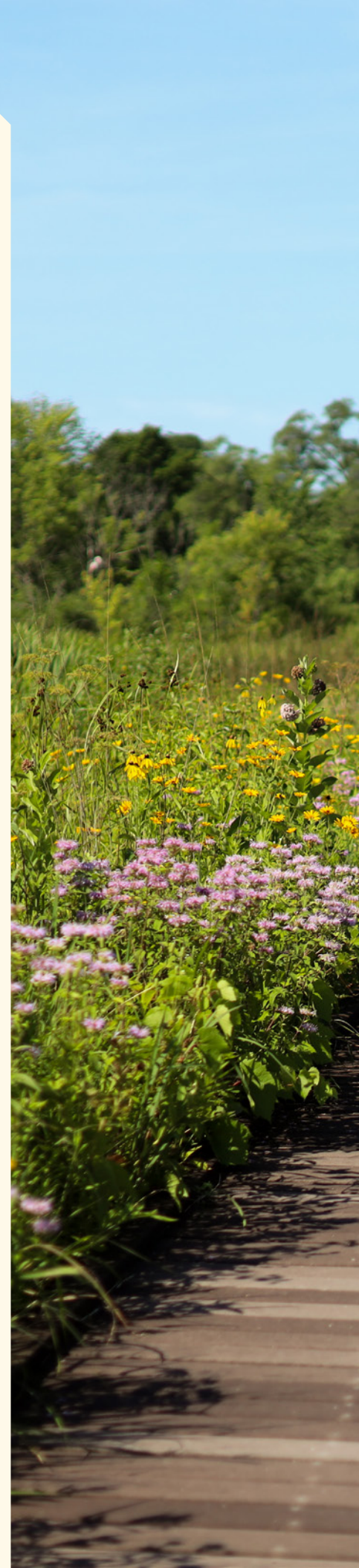
FREE

Ages: 18 & Up

These casual walks will highlight seasonal natural happenings and held rain or shine. Maximum participants will reflect current health guidelines.

Churchill Park F 9/18 9-10am

Manor Woods/Park F 10/2 9-10am





# Restoration Workdays

Best for Ages 8 & Up  
Help care for natural areas in your community parks. Activities may include removal of non-native plants, picking up trash, trail maintenance, collecting seeds, and planting trees and flowers. Please bring your own work gloves and a water bottle. We will follow health guidelines, maintain distances, and limit participation based on current health guidelines. Contact Renae Frigo at [rfrigo@gepark.org](mailto:rfrigo@gepark.org) if you have questions. (rf)

**R/NR**—Free, no registration required

Sa	8/8	9am-11am	Lake Ellyn
Sa	9/12	9am-11am	Danby
Sa	10/10	9am-11am	Churchill

# Sports and Esports

## **PROGRAM SUPERVISORS**

Brad Thomas (bt): [bthomas@gepark.org](mailto:bthomas@gepark.org), (630) 942-7288

Clint Babicz (cb): [cbabicz@gepark.org](mailto:cbabicz@gepark.org), (630) 942-7290

Christine Harnett (ch): [chartnett@gepark.org](mailto:chartnett@gepark.org), (630) 942-7268

Chad Shingler (cs): [cshingler@gepark.org](mailto:cshingler@gepark.org), (630) 317-0137



# Early Childhood

## ALL STAR SPORTS

### Parent/Tot Sports

Ages: 2-3 with Adult

This program gives you and your child the opportunity to bond and have fun together while learning a variety of sports. This class is great for simple motor skills such as: catching, throwing, batting, shooting, passing and anything that involves hand-eye coordination. Parents participate with their child as we play soccer, basketball, hockey, t-ball, and many other sports. Location: Main Street Recreation Center, 501 Hill Avenue. Min/Max: 4/9. (ch)

**R/NR**-\$52/\$78

118054	Sa	8/8-8/29	9:15-10am
--------	----	----------	-----------

**R/NR**-\$91/\$136

118055	W	9/2-10/14	9:15-10am
--------	---	-----------	-----------

118056	Sa	9/5-10/17	9:15-10am
--------	----	-----------	-----------

## ACKERMAN SFC

### Parent and Tot Sports

Ages: 3-5 with Adult

Parents play an integral part in helping their tots develop basic sports movement and motor skills. Motor skills activities focus on hand-eye and hand-foot coordination. Sports equipment and instruction are provided to help guide your child through an introduction to organized sports. Parent or caregiver participation is required. Location: Ackerman SFC, 800 St. Charles Road. Min/Max: 5/25. (cs)

**R/NR**-\$50/\$65

117510	Tu	9/15-10/13	9-9:45am
--------	----	------------	----------

117734	W	9/16-10/14	9-9:45am
--------	---	------------	----------

117735	Th	9/17-10/15	2-2:45pm
--------	----	------------	----------

## ACKERMAN SFC

### Sports and More

Ages: 3-6

Children are introduced to the fundamentals of different sports such as basketball, soccer, flag football, kickball and other group games and activities. This is the first step in learning the core skills, rules, and team tactics for each sport. Classes focus on both skill work and game play each week. Location: Ackerman SFC, 800 St. Charles Road. Min/Max: 5/25 (cs)

**R/NR**-\$50/\$65

117736	Tu	9/15-10/13	10-10:45am
--------	----	------------	------------

117737	W	9/16-10/14	10-10:45am
--------	---	------------	------------

117138	Th	9/17-10/15	3-3:45pm
--------	----	------------	----------



**ALL STAR SPORTS**

**Super Sports**

Ages: 3-7

We teach little superstars the importance of teamwork and sportsmanship, while attempting to spark an interest in playing a variety of sports. Sports covered will be favorites such as basketball, hockey, soccer, baseball, football and many more.

Location: Main Street Recreation Center, 501 Hill Avenue.

Min/Max: 4/9. (ch)

**R/NR**-\$52/\$78

Code	Age	Day	Date	Time
118042	5-6	Tu	8/4-8/25	2:45-3:30pm
118043	6-7	Tu	8/4-8/25	3:30-4:15pm
118044	2-3	W	8/5-8/26	4:30-5:15pm
118045	3-4	Th	8/6-8/27	3:30-4:30pm
118046	4-6	Th	8/6-8/27	4:30-5:30pm
118047	4-6	F	8/7-8/28	12:45-1:45pm
118053	3-4	F	8/7-8/28	1:45-2:30pm

**R/NR**-\$91/\$136

Code	Age	Day	Date	Time
118048	3-4	Tu	9/1-10/13	11:15am-12pm
118049	4-6	Th	9/3-10/15	10-10:45am
118050	4-6	Th	9/3-10/15	10:45-11:45am
118051	4-6	F	9/4-10/16	1:30-2:30pm
118052	3-4	F	9/4-10/16	2:30-3:15pm

**ALL STAR SPORTS**

**Basketball**

Ages: 3-10

This program will introduce your children to the game of basketball. Basic skills of dribbling, passing, shooting, and defense will be taught. Games will also be played to show the importance of teamwork in game situations. Location: Main Street Recreation Center, 501 Hill Avenue. Min/Max: 4/9. (ch)

**R/NR**-\$91/\$136

Code	Age	Day	Date	Time
118057	3-4	Tu	9/1-10/13	9:15-10am
118058	4-6	Tu	9/1-10/13	10-11am
118059	7-10	W	9/2-10/14	6-7pm
118060	3-5	F	9/4-10/16	9:15-10am
118061	5-7	F	9/4-10/16	10-11am

**ALL STAR SPORTS**

**Floor Hockey**

Ages: 4-7

Learn and play the fastest game in the world. This action-packed class emphasizes the importance of teamwork and sportsmanship, passing, shooting and stick handling before the skates go on. Please bring a bike helmet and gloves. Shin, knee & elbow pads optional. Location: Main Street Recreation Center, 501 Hill Avenue. Min/Max: 4/9. (ch)

**R/NR**-\$91/\$136

Code	Age	Day	Date	Time
118077	4-5	W	9/2-10/14	4-4:45pm
118078	6-7	W	9/2-10/14	4:45-5:45pm



**FUTURE PROS**

**Little Lakers Soccer**

Ages: 4-6

Introduce your little one to the world's most popular sport. Your child will learn not only the basic skills, but also a lifetime love for soccer! Each participant receives a soccer ball. If a class is cancelled, make-ups will be held at the end of each session, if possible. Location: Ackerman SFC, 800 St. Charles Road. Min/Max: 8/20. No class: 9/25, 11/27. (bt)

**R/NR**-\$80/\$120

116837	F	8/14-10/9	10:45-11:30am
117684	F	10/16-12/11	10:45-11:30am

**ALL STAR SPORTS**

**Soccer**

Ages: 3-7

We introduce boys and girls to soccer through fun drills and games that help them learn the complicated soccer swing, rules and proper etiquette. Clubs are provided, but participants may bring their own. Location: Main Street Recreation Center, 501 Hill Avenue. Min/Max: 4/9. (ch)

**R/NR**-\$52/\$78

Code	Age	Day	Date	Time
118079	3-4	Tu	8/4-8/25	9:15-10am
118080	4-6	Tu	8/4-8/25	10-11am
118081	4-6	Tu	8/4-8/25	4:15-5:15pm
118082	3-4	Tu	8/4-8/25	5:15-6pm
118083	4-6	Th	8/6-8/27	10-11am
118084	3-4	Th	8/6-8/27	11-11:45am
118085	3-4	Sa	8/8-8/29	10-10:45am
118086	5-7	Sa	8/8-8/29	10:45-11:45am

**R/NR**-\$91/\$136

Code	Age	Day	Date	Time
118087	3-4	Tu	9/1-10/13	4:45-5:30pm
118088	5-7	Tu	9/1-10/13	5:30-6:15pm
118089	3-4	Th	9/3-10/15	11:45am-12:30pm
118090	3-5	Th	9/3-10/15	4:30-5:15pm
118092	5-7	Th	9/3-10/15	5:15-6pm
118091	3-4	Sa	9/5-10/17	10-10:45am

**ALL STAR SPORTS**

**Golf**

Ages: 4-7

We introduce boys and girls to golf through fun drills and games that help them learn the complicated golf swing, rules and proper etiquette. Clubs are provided, but participants may bring their own. Location: Main Street Recreation Center, 501 Hill Avenue. Min/Max: 4/9. (ch)

**R/NR**-\$52/\$78

Code	Age	Day	Date	Time
118093	4-5	M	8/10-8/31	2-2:45pm
118094	5-7	M	8/10-8/31	2:45-3:30pm
118095	4-7	Tu	8/4-8/25	11-11:45am
118096	5-7	F	8/7-8/28	12-12:45pm
118097	4-5	Th	9/3-10/15	3-3:45pm
118098	5-7	Th	9/3-10/15	3:45-4:30pm

**FUTURE PROS**

**Parent/Tot Lakers Soccer**

Ages: 2-3 with Adult

This program provides the opportunity for you and your child to play soccer together. This class will work on simple motor skills such as dribbling, passing, and shooting. Parents participate with their child. Each participant receives a soccer ball. If a class is cancelled, make-ups will be held at the end of each session, if possible. Location: Ackerman SFC, 800 St. Charles Road. Min/Max: 8/20. No class: 9/25, 11/27. (bt)

**R/NR**-\$90/\$130

116835	F	8/14-10/9	9:45-10:30am
117683	F	10/16-12/11	9:45-10:30am



**ACKERMAN SFC**

**Tot T-Ball**

Ages: 3-6

This class will introduce baseball fundamentals and game play including batting, catching, throwing and base running and will include the principals of good sportsmanship, in a non-competitive and fun atmosphere. Location: Ackerman SFC, 800 St. Charles Road. Min/Max: 5/25. (cs)

**R/NR**-\$50/\$65

117739	Tu	9/15-10/13	11-11:45am
117740	W	9/16-10/14	11-11:45am

**ALL STAR SPORTS**

**T-Ball**

Ages: 3-7

We cover the basics of baseball in a fun and safe environment where no one stands around. We teach throwing, catching, hitting, fielding, running the bases and how to play the game. Games are played every week. Must bring your own glove. Location: Main Street Recreation Center, 501 Hill Avenue. Min/Max: 4/9. (ch)

**R/NR**-\$52/\$78

Code	Age	Day	Date	Time
118062	3-4	M	8/10-8/31	3:45-4:30pm
118063	5-7	M	8/10-8/31	4:30-5:30pm
118064	3-4	W	8/5-8/26	5:15-6pm
118065	4-6	W	8/5-8/26	6-7pm
118066	5-6	Th	8/6-8/27	5:30-6:30pm
118067	3-4	F	8/7-8/28	10-10:45am
118068	4-6	F	8/7-8/28	10:45-11:45am
118069	3-4	Sa	8/8-8/29	11:45am-12:30pm

**R/NR**-\$91/\$136

Code	Age	Day	Date	Time
118070	3-4	Tu	9/1-10/13	3-3:45pm
118071	5-7	Tu	9/1-10/13	3:45-4:45pm
118072	3-4	W	9/2-10/14	10-10:45am
118073	4-6	W	9/2-10/14	10:45-11:45am
118074	3-4	F	9/4-10/16	3:15-4:15pm
118075	3-4	Sa	9/5-10/17	10:45-11:30am
118076	4-6	Sa	9/5-10/17	11:30am-12:30pm



# Youth & Teen



## 2020 Lightning Running Club

Ages: 6-14

Kids will build endurance and learn proper running form while training to run between a 2K and 4K in this informal, co-ed running club. Runners will be grouped by age and/or ability level. Interested qualifiers may choose to go to the national meet in November (National meet fee and travel expenses are not included in registration costs).

Registration fee includes practice time, team uniform, YESathletics membership fee, and local meet fees. Please indicate your child's t-shirt size when registering. Registration for this program is ongoing; price is reflective of a September 15th start date. Locations: Maryknoll Park (845 Pershing Avenue) and Newton Park (707 Fairview Ave). Min/Max: 10/50. (ch)

**R/NR**-\$55

118101 Tu/Th/Sa 9/15-Nov. TBD

## Youth Run for Fun

Ages: 8-13

An informal introduction to running for boys and girls of all fitness levels. Fun drills, games and relay races create a positive atmosphere in a non-competitive environment. Location: Ackerman SFC, 800 St. Charles Road. Min/Max: 5/25. (cs)

**R/NR**-\$50/\$65

117744 Tu 9/15-10/13 4-5pm

## Bulldogs Boys Lacrosse

Grades: 3-8

Coached by Glenbard West Boys Varsity Coach, Sam Story, players will learn Lacrosse IQ and work on lacrosse skills tailored to each age group. Practices will include small sided games in a 3v3 format. Grades 1-4 will only utilize lacrosse sticks and practice balls. If players do not have their own stick, one can be provided at practice. Grades 5-8 will need a full set of lacrosse pads (helmet, stick, chest protector, gloves and elbow pads). Location: Ackerman SFC, 800 St. Charles Road. Min/Max: 20/40. (ch)

**R/NR**-\$120/\$170

Grades 1-4

117770 M 9/14-10/19 6-6:45pm

Grades 5-6

117771 M 9/14-10/19 7:30-8:30pm

Grades 7-8

118486 M 9/14-10/19 7:30-8:30pm

## Skateboard Lessons

Ages: 5-13

Appropriate for beginning and intermediate levels: beginners learn how to start, stop, and turn, basic ramp riding skills, and tricks; intermediate skaters learn skills based on ability. Skaters must bring a drink and wear a helmet. Knee, elbow, and wrist guards encouraged. Email [fptskateboard@yahoo.com](mailto:fptskateboard@yahoo.com) about an appropriate skateboard. Instructor: Frank Pope. Location: Newton Park, 707 Fairview Avenue. Min/Max: 4/10. (ch)

**Ages: 5-7**

**R/NR**-\$85/\$127

117772 Tu 9/8-9/29 4-5pm

**Ages: 8-13**

**R/NR**-\$172/\$285

117773 Tu 9/8-9/29 5-7pm

## Fencing

Ages: 8 & Up

Learn the beginning skills and techniques of this unique sport without fighting. Fencing combines coordination of relaxed and fast moves, and critical thinking between attack and defensive strategies. Fencers must rent personal equipment for the session or purchase their own basic set. To rent a personal set of equipment, contact Fencing Sports Club at 630-678-0035. Location: Main Street Recreation Center, 501 Hill Avenue. Min/Max: 5/10. (ch)

**R/NR**-\$115/\$175

117768 Sa 9/19-10/24 11:15am-12:15pm

117769 Sa 10/31-12/12 11:15am-12:15pm

## Tennis Lessons

Ages: 4-9

Lessons will focus on racquet skills, athletic development, and an understanding of the game while having FUN! Please bring a racquet to class or indicate if you would like to purchase a junior sized racquet (\$25). T-shirts are included in the price. All ability levels are welcome. Staff will ensure your child is placed in the appropriate group based on their skills. Instructor: Mark Cunnington. Location: Sunset Park, 483 Fairview Avenue. Min/Max: 4/10. (bt)

**R/NR**-\$100/\$140

Ages 4-6

117689 M 9/14-10/5 4-5pm

117685 Tu 9/15-10/6 4-5pm

117687 W 9/16-10/7 4-5pm

Ages 7-9

117690 M 9/14-10/5 5-6pm

117686 Tu 9/15-10/6 5-6pm

117688 W 9/16-10/7 5-6pm





## Cyclones Volleyball Skills & Drills

Grade: 3-8

One of the top volleyball clubs in the area, the Cyclones, will be teaching a fun and fundamental-style volleyball program to youth through tweens. With its unique combination of drills, competition and instruction, this program focuses on breaking volleyball down into different skill stations. These stations offer the most effective way to capitalize on skills, knowledge, drills and techniques. No equipment needed. Location: Ackerman SFC, 800 St. Charles Road. Min/Max: 6/20. (ch)

R/NR-\$60/\$90

Code	Grade	Day	Date	Time
117758	3-4	M	9/14-10/5	4:30-5:30pm
117761	3-4	M	10/12-11/2	4:30-5:30pm
117764	3-4	M	11/9-11/30	4:30-5:30pm
117759	5-6	M	9/14-10/5	5:30-6:30pm
117762	5-6	M	10/12-11/2	5:30-6:30pm
117765	5-6	M	11/9-11/30	5:30-6:30pm

R/NR-\$90/\$135

Code	Grade	Day	Date	Time
117760	7-8	M	9/14-10/5	6:30-8pm
117763	7-8	M	10/12-11/2	6:30-8pm
117766	7-8	M	11/9-11/30	6:30-8pm

## Cyclones Volleyball Camp

Grade: 4-6

Join us for a 3-day camp hosted by the Cyclones Volleyball Club! Athletes will focus on skill building and game play during this Thanksgiving break camp. Location: Ackerman SFC, 800 St. Charles Road. Min/Max: 6/20. (ch)

R/NR-\$90/\$135

117767	M-W	11/23-11/25	9-11:30am
--------	-----	-------------	-----------

## Coed Field Hockey

Grade: 1-8

Run by qualified field hockey coaches with international, national, and local playing/coaching experience, this program focuses on building individual and team field hockey skills. Instruction and practice drills emphasize stick handling, ball control, positioning, offensive and defensive tactics, rules, and conditioning. Beginners are welcome at all age groups.

All participants are required to purchase a reversible jersey (\$20) for game play. Each player is required to bring and wear their own shin guards and mouth guard. Loaner sticks are available, but purchase of field hockey stick is recommended. Please ask your instructor for tips on purchasing a stick. Practices held at Ackerman SFC (800 St. Charles Road) and scrimmages at Glenbard West Memorial Field. Min/Max: 6/20. (ch)

Grade: 1-4

R/NR-\$168/\$252

Code	Date	Thursday Practices	Sunday Scrimmages
118099	9/10-10/25	5:30-6:30pm	4:30-5:30pm

Grade: 5-8

R/NR-\$190/\$285

Code	Date	Thursday Practices	Sunday Scrimmages
118100	9/10-10/25	6:30-8pm	5:30-6:30pm

## Softball Pitching Clinics

Ages: 8-17

Here's your chance to learn fastpitch pitching fundamentals and stay in shape during the off season. Pitchers will get an opportunity to learn new techniques and sharpen skills. Pitchers must supply their own catchers and gloves. Instructor: Scott Swords. Location: Ackerman SFC, 800 St. Charles Road. Min/Max: 2/12. (cb)

R/NR-\$80/\$120

117753	M	10/26-12/14	6-7pm
117754	M	10/26-12/14	7:15-8:15pm

**FUTURE PROS**

**Lakers Soccer Academy**

Grades: 1-2

This program is for participants who love soccer, want to play at a higher level, but are not ready to commit to the rigors of our Glen Ellyn Lakers travel soccer program. Participation in both the Glen Ellyn House Soccer League and Lakers Academy is encouraged. Training and games will be run by our Future Pros travel soccer trainers. Practice is once per week for 90 minutes with a focus on developing individual soccer skills and sportsmanship. Games against Wheaton Wings Academy teams will be held Saturday afternoons and will be one hour long. Each player is required to bring their own soccer ball, cleats, shinguards, and water for each class. Location: Ackerman Park, 800 St. Charles Road. (bt)

**R/NR**-\$255

117726	Th/Sa	8/20-10/19	Th: 4:30-6pm Sa: 2-3pm
--------	-------	------------	---------------------------

**FUTURE PROS**

**Junior Lakers Soccer**

Grades: PreK-3

Weekly classes run by Future Pros trainers will focus on building individual and team soccer skills. Instruction, drills, and games will focus on dribbling, passing, shooting, defending, and offensive attacking skills. Groups will be divided for skill-level appropriate training each week. Each player is required to bring their own soccer ball, cleats, shinguards, and water. Location: Ackerman Park, 800 St. Charles Road. Min/Max: 8/30. (bt)

**R/NR**-\$80/\$120

*Grades Pre-K to K*

116941	W	8/5-9/23	4-5pm
117727	W	9/30-11/18	4-5pm

*Grades 1-3*

116939	W	8/5-9/23	5-6pm
117728	W	9/30-11/18	5-6pm

**Glen Ellyn Girls Basketball Academy**

Grades: 3-8

This program is designed to enhance your daughter's basketball skills. This Academy is led by Kristi Faulkner, who is the Girls Varsity Head Coach at Glenbard West. Each week, participants will work on skill development during their practice day and then play 3v3 games incorporating those skills on their game days. All participants should bring their own basketball each week. Instructor: Kristi Faulkner. Location: Ackerman SFC, 800 St. Charles Road. Min/Max: 10/36. (bt)

**R/NR**-\$225/\$275

117733	Tu/Sa	8/18-10/17	Tu: 5-6pm Sa: 1-2pm
--------	-------	------------	------------------------

**CHAMPIONS BASKETBALL CLUB**

**Boys Champions Basketball Academy**

Grades: 1-8

This program is designed to offer top level training in all aspects of player development. Participants work through detailed skills training to build a foundation of fundamentals. Team strategy and overall offensive and defensive I.Q. are taught. Players will be able to apply what they have learned in live game play. Location: Ackerman SFC, 800 St. Charles Road. Min/Max: 10/20. (bt)

**R/NR**-\$300/\$350

Code	Grade	Day	Date	Time
117694	1-2	Tu/Th	9/8-10/29	6-7:30pm
117691	3-4	Tu/Th	9/8-10/29	6-7:30pm
117692	5-6	Tu/Th	9/8-10/29	7:30-9pm
117693	7-8	Tu/Th	9/8-10/29	7:30-9pm



**LAKERS & MIDWEST FC**

# Supplemental Travel Soccer Tryouts

Age: U8-High School

Supplemental travel soccer tryouts will be held to add additional players to existing Glen Ellyn Lakers and Midwest FC teams or create new teams if numbers allow. Lakers tryouts will be held at Ackerman SFC and Midwest FC will be held outside at Ackerman Park, 800 St. Charles Road. Tryouts are free, but pre-registration is required. (bt)

Code	Age	Day	Date	Time
117732	HS Boys	Th	10/15	7:45-9:15pm
117731	U8-U9	M	11/2	4-5pm
117729	U10-U11	M	11/2	4-5pm
117730	U12-U14	M	11/2	5-6pm



# Youth Leagues



## Winter Youth Basketball League

Grades: 1-8

Our philosophy is to provide a friendly atmosphere and to teach the rules and skills of basketball as well as good sportsmanship. The league is designed to ensure that all players have an equal opportunity to participate in games and practices no matter their skill level.

Games and practices are held at Ackerman SFC and local schools depending on your volunteer coach's schedule and facility availability. All participants will receive a reversible jersey.

Evaluations for 3rd-8th grade will be held November 14th at Ackerman SFC. The schedules will be distributed at a later date.

**REGISTRATION DEADLINE:** November 1  
**SEASON:** January to March

If interested in becoming a volunteer coach, be sure to indicate that on your registration. Min/Max: 40/100. (bt)

### 1st to 2nd Grade

These leagues focus on the basic fundamentals of basketball. Practices and games are structured around skill development and having fun. All games are officiated in an instructional atmosphere. Players are placed on teams according to their schools. Player/coach requests are not accepted.

**R/NR** - \$120/\$170

- |        |                 |
|--------|-----------------|
| 117705 | Boys 1st Grade  |
| 117711 | Girls 1st Grade |
| 117706 | Boys 2nd Grade  |
| 117712 | Girls 2nd Grade |

### 3rd & 4th Grade

These leagues introduce players to a more structured format. Players learn more of the team concept by focusing less on individual skills and more on teamwork. Players will be asked to attend an evaluation session and will be drafted to teams by coaches. Team will play a 7-game season and compete in a single elimination playoff at the end of the season.

**R/NR** - \$120/\$170

- |        |                 |
|--------|-----------------|
| 117707 | Boys 3rd Grade  |
| 117713 | Girls 3rd Grade |
| 117708 | Boys 4th Grade  |
| 117714 | Girls 4th Grade |

### 5th & 6th Grade

This league places more emphasis on the team as whole. This is accomplished by the introduction of set plays to increase the player's ability to adapt to game situations. Players will be asked to attend an evaluation session and will be drafted to teams by coaches. Team will play a 7-game season and compete in a single elimination playoff at the end of the season.

**R/NR** - \$120/\$170

- |        |                     |
|--------|---------------------|
| 117709 | Boys 5th/6th Grade  |
| 117715 | Girls 5th/6th Grade |

### 7th & 8th Grade

The program starts as a review of the knowledge and skills obtained throughout the years. Junior High athletes may participate but must be present at both the practices and games throughout the entire season. Players will be asked to attend an evaluation session and will be drafted to teams by coaches. Team will play a 7-game season and compete in a single elimination playoff at the end of the season. 7th/8th Grade Girls participate in an inter-village league with neighboring districts and will follow a slightly different schedule.

**R/NR** - \$120/\$170

- |        |                     |
|--------|---------------------|
| 117710 | Boys 7th/8th Grade  |
| 117716 | Girls 7th/8th Grade |





**FREE**

**Winter Youth Basketball League Clinics**

Grades: 1-8

Join us to help shake the dust off for the upcoming season. Clinics are FREE and only available to those enrolled in the Winter Youth Basketball League. Clinics are skill based and co-ed. Space is limited, and registration is required. Location: Ackerman SFC, 800 St. Charles Road. (bt)

Code	Grade	Day	Date	Time
117720	1-2	M	11/30	5-6pm
117722	3-4	M	12/7	5:30-6:30pm
117723	3-4	M	12/7	6:30-7:30pm
117724	5-6	M	12/14	5:30-6:30pm
117725	7-8	M	12/14	6:30-7:30pm



# Virtual

E-CLASSES ON DEMAND

## National Academy of Athletics Sports Camps

Ages: All

Your child will participate in a 5-day sports camp in the comfort of your own home. The drills and skills can all be completed in small spaces with minimal or no equipment. This innovative and engaging program is presented in an enthusiastic and positive manner. Learn from these college and ex-professional athletes and coaches. Each day your child will experience a warmup, 3 skills and drills sessions, and a wrap up. All participants will be sent links to the camps via email and those links can be accessed for 30 days. (bt)

CODE	CAMP	DATE	R/NR
<i>Registration Deadline: August 30</i>			
117627	Football	9/1-9/15	\$48/\$72
117628	Volleyball	9/1-9/15	\$48/\$72
117629	Baseball	9/1-9/15	\$48/\$72
117630	Soccer	9/1-9/15	\$48/\$72
117631	Basketball	9/1-9/15	\$48/\$72
117632	Martial Arts	9/1-9/15	\$48/\$72
117633	Multi-Sport	9/1-9/15	\$48/\$72

CODE	CAMP	DATE	R/NR
<i>Registration Deadline: September 10</i>			
117634	Football	9/16-9/30	\$48/\$72
117635	Volleyball	9/16-9/30	\$48/\$72
117636	Baseball	9/16-9/30	\$48/\$72
117637	Soccer	9/16-9/30	\$48/\$72
117638	Basketball	9/16-9/30	\$48/\$72
117639	Martial Arts	9/16-9/30	\$48/\$72
117640	Multi-Sport	9/16-9/30	\$48/\$72

CODE	CAMP	DATE	R/NR
<i>Registration Deadline: September 24</i>			
117641	Football	10/1-10/15	\$48/\$72
117642	Volleyball	10/1-10/15	\$48/\$72
117643	Baseball	10/1-10/15	\$48/\$72
117644	Soccer	10/1-10/15	\$48/\$72
117645	Basketball	10/1-10/15	\$48/\$72
117646	Martial Arts	10/1-10/15	\$48/\$72
117647	Multi-Sport	10/1-10/15	\$48/\$72





# Adult & Senior

## Volleyball League (Coed)

Ages: 18 & Up  
 Teams play an 8-game regular season followed by a single elimination post-season tournament. League play begins September 11. All games will be played at Ackerman Sports & Fitness Center. Please pay close attention to the deadline date. A first-come, first-served policy will be followed. Adult league information, schedules, and standings are available at [www.gepark.org/adult-leagues](http://www.gepark.org/adult-leagues). Location: Ackerman SFC, 800 St. Charles Road. Min/ Max: 4/10. No games: 9/25. (ch)

**R/NR Teams**-\$400/\$450 **Register by:** 9/10  
 117757 F 9/11-11/13

## Men's Basketball League

Ages: 18 & Up  
 Teams plays an 8-game regular season followed by a single elimination tournament for those teams that qualify. A first-come, first-serve policy will be followed. Additional league information, schedules, and standings are available at [www.gepark.org/adult-leagues](http://www.gepark.org/adult-leagues). Location: Ackerman SFC, 800 St. Charles Road. Min/ Max: 4/10. No games: 9/27. (bt)



**R/NR Teams**-\$625/\$725  
 117681 Su 9/6-11/15

## 46 & Older Basketball

Ages: 46 & Up  
 Pick-up games are organized nightly, and participants should bring their own basketball. Pre-registration required. Location: Ackerman SFC, 800 St. Charles Road. Min/Max: 10/50. No games: 11/23, 12/21, 12/28, 1/20, 2/15, 3/29. (bt)

**R/NR**-\$25/\$32  
 117682 M 10/28-5/18 7-9pm

## Men's 12" Fall Softball

Ages: 18 & Up  
 Teams play an 8-game regular season followed by a single elimination post-season tournament. Games begin August 17. For more information including league rules, regulations and registration information, please visit our website at [www.gepark.org/adult-leagues](http://www.gepark.org/adult-leagues). Location: Ackerman Park, 800 St. Charles Road. Min/Max: 4/8. (bt)

**R/NR Teams**-\$650 **Register by:** 8/7  
 116833 M 8/17-10/19

# Martial Arts



## Shotokan Karate

Ages: All

Illinois Shotokan Karate classes help develop strength, flexibility, endurance, stamina, and muscle tone, all while learning lasting personal safety and self-defense skills. Uniforms and belt testing are available through the instructor for an additional fee. All classes are taught by instructors of the Illinois Shotokan Karate Club under the direction of John Di Pasquale, four-time National Champion and United States Karate National Team Coach. (ch)

**R/NR:** \$173/\$216 (\$229/\$286 for code 117783)

### MAIN STREET RECREATION CENTER

CODE	AGE	DAY	DATE	TIME
<i>Beginner/Continuing (White-Yellow)</i>				
117792	7-14	W	9/9-12/16	6:30-7:30pm
<i>Intermediate/Advanced (Blue-Black)</i>				
117793	7-14	W	9/9-12/16	7:30-8:30pm
<i>Continuer (Red-Blue)</i>				
117782	15+	W	9/9-12/16	8:30-9:30pm
<i>Intermediate/Advanced (Green-Black)</i>				
117783	15+	W	9/9-12/16	8:30-10pm

### WHEATON PARK DISTRICT

CODE	AGE	DAY	DATE	TIME
<i>Beginner/Continuer</i>				
117788	4-7	W	9/9-12/16	4:10-4:55pm
<i>Beginner/Continuing (White-Red)</i>				
117791	4-7	Sa	9/12-12/19	3:15-4pm
117795	7-14	Sa	9/12-12/19	2-3pm
117787	7+ w/Adult	Sa	9/12-12/19	2-3pm
<i>Intermediate (Green-Purple)</i>				
117796	7-14	Sa	9/12-12/19	4-5pm
117785	7+ w/Adult	Sa	9/12-12/19	4-5pm
<i>Intermediate/Advanced (Instructor Permission)</i>				
117790	4-7	W	9/9-12/16	5-5:45pm
<i>Intermediate/Advanced (Orange &amp; Up)</i>				
117789	4-7	Sa	9/12-12/19	4:05-4:50pm
<i>Novice (Orange-Blue)</i>				
117797	7-14	Sa	9/12-12/19	3-4pm
117786	7+ w/Adult	Sa	9/12-12/19	3-4pm
<i>Advanced (Brown &amp; Up)</i>				
117794	7-14	Sa	9/12-12/19	5-6pm
117784	7+ w/Adult	Sa	9/12-12/19	5-6pm

## KH Kim Taekwondo

Ages: All

Students will focus on developing balance, coordination, and respect for the discipline of martial arts training. Skills are developed through instruction and appropriate games for age and ability. A \$45 uniform fee is required at the first class. Colored belt students must have complete sparring gear. Location: Spring Avenue Recreation Center, 185 Spring Avenue. *No class: 11/28.* (ch)

**R/NR:** \$182/\$224

CODE	AGE	DAY	DATE	TIME
<i>Little Dragons Taekwondo</i>				
117779	4-6	Sa	9/12-12/19	10-10:40am
117780	4-6	Sa	9/12-12/19	10:40-11:25am
<i>Early Taekwondo</i>				
117777	6-7	Sa	9/12-12/19	11:30am-12:20pm
<i>Parent/Child Taekwondo</i>				
117781	7+ w/Adult	Sa	9/12-12/19	1:20-2:15pm
<i>Youth Taekwondo</i>				
117778	8-13	Sa	9/12-12/19	12:25-1:15pm
<i>Adult Taekwondo</i>				
117776	14+	Sa	9/12-12/19	1:20-2:15pm





**ESPORTS**

# Rocket League

**\$90**  
per team

Ages: 6 & Up

Showcase your skills competing against opponents in a virtual soccer game using rocket-powered cars in a demolition derby setting. Participants must own/purchase the Rocket League game, have a compatible playing console, and internet access with a valid online gaming subscription. Games are played 3v3. Participants can form their own teams (indicate player names in the buddy request section) or register as individuals to be placed on a team. Once registered with the Park District, participants will be sent specific instructions for registering through GGleagues. Registration required by August 23 for both the September and October sessions. (bt)

<b>BEGINNER</b>		<b>R/NR Team Fee—\$90</b>		<b>INTERMEDIATE</b>		<b>R/NR Team Fee—\$90</b>		<b>ADVANCED</b>		<b>R/NR Team Fee—\$90</b>	
117621	W	9/2-10/14	6:30-7:30pm	117622	W	9/2-10/14	6:30-7:30pm	117623	W	9/2-10/14	6:30-7:30pm
117624	W	10/28-12/16	6:30-7:30pm	117625	W	10/28-12/16	6:30-7:30pm	117626	W	10/28-12/16	6:30-7:30pm



# Gymnastics Center

## *Jump, Flip & Tumble*

The Glen Ellyn Park District Gymnastics program offers classes for children 18 months to 14 years old. For safety and comfort, proper attire is mandatory for gymnastics participants; girls should wear a gymnastics leotard or shorts and t-shirt (no tights or jewelry). Boys should wear shorts or sweatpants and t-shirt. Bare feet are best. Parent observation week will take place on the last class of each session. Instructors reserve the right to move participants to a different class if they are not developmentally ready. Classes are held at Spring Avenue Recreation Center, 185 Spring Avenue.

### **A FRIENDLY REMINDER**

With your child's best interest in mind, we ask that parents and friends do not remain in the gym during class time. We ask our instructors to enforce this policy so that your child may devote their attention to the class without outside interruptions. This policy is for safety as well as learning experiences.

### **Parent/Tot Gymnastics**

This fun-filled parent/tot play time program introduces your child to the exciting world of tumbling and gymnastics. Parent/Tot features tumbling and gymnastics equipment, balls, hoops, circles & parachute play. Parent involvement is the key to this class. Please no siblings.

### **Tiny Tumblers Gymnastics**

This introductory gymnastics class helps develop gross motor skills and body awareness and teaches self-confidence while having fun. A variety of gymnastic and tumbling stations will be set up each week to introduce your gymnasts to the basic skills used in this sport. Children must be able to attend class without a parent present.

### **Preschool Gymnastics**

A variety of gymnastics and tumbling stations will be set up each week to introduce your gymnast to the basic skills used in this sport. Children must be able to attend class without a parent present.

### **Kindergarten Gymnastics**

This class was designed to help refine and develop the gross motor skills taught in previous classes. A higher skill level of gymnastics stations will be set up each week to increase strength, flexibility and coordination.

### **Pre-Developmental Gymnastics**

The focus of this program will be on floor exercise, springboard skills, bars and beam. Stretching and conditioning for muscle tone will be included. This is a beginner program.

### **Developmental Gymnastics**

Your child will focus on Olympic events including beam, floor exercise, vault and bars. Class will also include stretching, apparatus skills, and conditioning in a safe and controlled atmosphere. Participants must be able to perform cartwheels, round-offs, forward/backward rolls, and a bridge.

### **Tumbling 1**

No skills required. Start out learning the proper way to perform handstands, cartwheels, and more. Participants will build on their skills each session.

### **Tumbling 2**

Participants should possess basic skills, such as; cartwheel, round-off, forward/backward rolls, handstand, and bridge.



## Class Schedule

Code	Class	Day	Ages	Dates	Time	# of Classes	Min/Max	R/NR
118112	Parent/Tot	M	18-36 mos.	Sept. 14-Oct. 19	9-9:30am	Six	6/12	\$60/\$90
118115	Tiny Tumblers	M	3	Sept. 14-Oct. 19	9:50-10:25am	Six	4/6	\$60/\$90
118114	Preschool	M	4-5	Sept. 14-Oct. 19	9:50-10:35am	Six	4/6	\$72/\$108
118111	Kindergarten	M	5-6	Sept. 14-Oct. 19	10:55-11:40am	Six	6/12	\$72/\$108
118113	Preschool/Kindergarten	M	4-6	Sept. 14-Oct. 19	1:30-2:15pm	Six	6/12	\$72/\$108
118116	Tiny Tumblers	M	3	Sept. 14-Oct. 19	2:35-3:05pm	Six	6/10	\$60/\$90
118119	Preschool & Kindergarten	Tu	4-6	Sept. 8-Oct. 20	2:30-3:15pm	Seven	6/12	\$84/\$126
118118	Pre-Developmental	Tu	6-8	Sept. 8-Oct. 20	4:30-5:30pm	Seven	6/12	\$98/\$147
118117	Developmental*	Tu	7-12	Sept. 8-Oct. 20	5:50-6:50 pm	Seven	6/12	\$98/\$147
118121	Parent/Tot	W	18-36 mos.	Sept. 9-Oct. 21	9:15-9:45am	Seven	6/12	\$70/\$105
118125	Tiny Tumblers	W	3	Sept. 9-Oct. 21	10:05-10:35am	Seven	6/10	\$70/\$105
118122	Preschool/Kindergarten	W	4-6	Sept. 9-Oct. 21	10:55-11:40am	Seven	6/12	\$84/\$126
118123	Preschool/Kindergarten	W	4-6	Sept. 9-Oct. 21	12:40-1:25pm	Seven	6/12	\$84/\$126
118126	Tiny Tumblers	W	3	Sept. 9-Oct. 21	4:15-4:45pm	Seven	6/10	\$70/\$105
118124	Preschool	W	4-5	Sept. 9-Oct. 21	5:05-5:50pm	Seven	6/12	\$84/\$126
118120	Kindergarten	W	5-6	Sept. 9-Oct. 21	6:10-6:55pm	Seven	6/12	\$84/\$126
118128	Parent/Tot	Th	18-36 mos.	Sept. 10-Oct. 22	9:15-9:45am	Seven	6/12	\$70/\$105
118130	Preschool	Th	4-5	Sept. 10-Oct. 22	10:05-10:50am	Seven	6/12	\$84/\$126
118127	Tiny Tumblers	Th	3	Sept. 10-Oct. 22	11:10-11:30am	Seven	6/10	\$70/\$105
118129	Pre-Dev./Developmental	Th	6-12	Sept. 10-Oct. 22	5:20-6:20pm	Seven	6/12	\$98/\$147
118131	Tumbling 1 & 2	Th	7-14	Sept. 10-Oct. 22	6:40-7:40pm	Seven	6/12	\$98/\$147
118133	Parent/Tot	Sa	18-36 mos.	Sept. 12-Oct. 24	9-9:30am	Seven	6/12	\$70/\$105
118136	Tiny Tumblers	Sa	3	Sept. 12-Oct. 24	9:50-10:20am	Seven	6/10	\$70/\$105
118135	Preschool	Sa	4-5.	Sept. 12-Oct. 24	10:40-11:25am	Seven	6/12	\$84/\$126
118132	Kindergarten	Sa	5-6	Sept. 12-Oct. 24	11:45-12:30pm	Seven	6/12	\$84/\$126
118134	Pre-Dev./Developmental	Sa	6-12	Sept. 12-Oct. 24	12:50-1:50pm	Seven	6/12	\$98/\$147

\*Must possess required skills to participate in class



# Grasshoppers

## Tumbling Team 2020-21

Ages: 6-14. The Glen Ellyn Grasshoppers Tumbling Team focuses solely on tumbling and will compete in meets through the Illinois Park District Gymnastics Conference. No registrations accepted after September 15. (ch)

### Informational Meeting:

Date/Time: August 27, 6:30 p.m.  
 Location: Zoom  
 Email [chartnett@gepark.org](mailto:chartnett@gepark.org)  
 for the meeting link

### Questions?

Christine Hartnett  
[chartnett@gepark.org](mailto:chartnett@gepark.org)  
 (630) 942-7268

### Placement Date Registration

New and returning participants are encouraged to register for the Placement Day to determine their competitive level. If you are unable to make the placement day, coaches will assess new gymnasts at the first class and place them accordingly. Instructors reserve the right to change placements.

Code	Day	Date	Time	R/NR
117005	M	8/24	5-6pm	Free

### Season Registration

Practices will begin the week of September 14 and the season will conclude in early-March.

Code	Level	Day	Time	R/NR
117043	Newcomer	F	4-5pm	\$288/\$432
117009	Beginner	M & F	M: 4-5:15pm F: 5-6pm	\$426/\$639
117008	Adv. Beginner	M & F	M: 5:15-6:30pm F: 6-7pm	\$426/\$639
117010	Novice & Up	M & F	M: 6:30-7:45pm F: 6-7pm	\$426/\$639



Registration for the  
2020-2021 Season  
Opens Late July!

## Your Hometown Hockey Club.

The Admirals Hockey Club, in Glen Ellyn, IL . provides hockey instruction, skill development and competitive play opportunities for kids of all ages and skill levels. From our Future Admirals beginner hockey program for all ages, to Tier II and Tier III travel teams at the 8U -18U and Girls levels. The Admirals Hockey Club prides itself on the development of the complete hockey player through Long-Term Athlete Development (LTAD) and age-appropriate focused training.



### Fall 2020- 2021 Hockey Programs:

- Future Admirals (all ages)
- 8U CUHL Travel Teams
- Girls NIHL Travel Teams
- 10U - 18U NIHL/NWHL Travel Teams

[www.admiralshockeyclub.com](http://www.admiralshockeyclub.com)

Follow us on Social Media!





# Dance Academy

See the class description online or email [tstirmell@gepark.org](mailto:tstirmell@gepark.org) for specific shoe and attire suggestions.

## Dance for Kids

Our professional instructors inspire creativity, teach core dance concepts, and give students a strong foundation in quality dance technique and vocabulary. Classes are held at Spring Avenue Recreation Center, 185 Spring Avenue.

### Parent/Tot Dance

Designed for our littlest dancers, this class introduces basic ballet, coordination, and gross motor skills through creative movement and interactive songs with a parent present. Ballet shoes are optional for parent/caregiver.

### Tiny Tot Dance

Your child will learn dance concepts and develop rhythm, coordination, and balance while moving and grooving to music and using creative props to inspire imagination. Parents/guardians are required to stay within the building for the duration of each class, no exceptions. Children must be able to attend class without a parent present.

### Creative Movement

This class develops motor skills, balance, cognitive awareness, creativity, rhythm, musicality and self-esteem. Parents/

guardians are required to stay within the building for the duration of each class, no exceptions. Children must be able to attend class without a parent present.

### Creative Hip Hop

This class develops creativity and musicality with a special focus on the rhythm, muscle memory, and coordination found in this urban dance style. Parents/guardians are required to stay within the building for the duration of each class, no exceptions. Children must be able to attend class without a parent present.

### Pre-Ballet/Tap

This class is divided into two units: ballet and tap. Your child will be taught core concepts, age-appropriate technique, and vocabulary in these two genres of dance.

### Kinder-Ballet/Tap

Kinder classes build upon skills taught in the pre-ballet/tap program.

### Jazz & Tap

Your child will learn core technique and vocabulary in both genres of dance. Jazz is a more energetic form of dance that includes dramatic body movements. Isolations, leaps and turns are taught to upbeat, rhythmic music. Tap will cover beginning tap rhythms and steps while challenging students to

enhance their tap movement vocabulary and knowledge.

### Ballet/Lyrical

This class merges the techniques of ballet and jazz. Participants will learn to dance with fluid movements characterized by the expression of their emotions.

### Ballet/Tap

This class focuses on giving your child a strong foundation in ballet and tap technique. Ballet and tap vocabulary and musicality will be taught.

### Ballet/Jazz

This class focuses on giving your child a strong foundation in ballet and jazz technique. Ballet and jazz vocabulary and musicality will be taught.

### Hip Hop

This high-energy style of dance encompasses many different urban dance styles and focuses on rhythm, muscle memory, and coordination. Gym shoes/sneakers are typically worn.

### Theatrical

This class focuses on “performance” based dance. This class is a great way to learn to be more expressive on stage while dancing to songs from great Broadway musicals!

## Instructional Class Schedule (6-Week Session)

No class: 11/23-11/28

Code	Class	Day	Age	Dates	Time	Min/Max	R/NR
117586	Tiny Tot	M	2.5-3	Sept. 14-Oct. 19	9:15am-9:45am	4/8	\$40/\$60
117587	Parent/Tot	M	18-36 mo.	Sept. 14-Oct. 19	9:50am-10:20am	5/12	\$40/\$60
117588	Creative Hip Hop	M	3-4	Sept. 14-Oct. 19	10:30am-11:15am	5/10	\$60/\$90
117589	Pre-Ballet/Tap	M	4-5	Sept. 14-Oct. 19	11:20am-12:05pm	5/12	\$60/\$90
117590	Tiny Tot	M	2.5-3	Sept. 14-Oct. 19	4:15pm-4:45pm	4/8	\$40/\$60
117591	Creative Movement	M	3-4	Sept. 14-Oct. 19	4:50pm-5:35pm	5/10	\$60/\$90
117592	Kinder-Ballet/Tap	M	5-6	Sept. 14-Oct. 19	5:40pm-6:25pm	5/12	\$60/\$90
117593	Theatrical	M	6 & Up	Sept. 14-Oct. 19	6:30pm-7:30pm	5/12	\$80/\$120
117594	Creative Movement	Tu	3-4	Sept. 15-Oct.20	4:25pm-5:10pm	5/10	\$60/\$90
117595	Parent/Tot	Tu	18-36 mo.	Sept. 15-Oct.20	5:15pm-5:45pm	5/12	\$40/\$60
117596	Hip Hop	Tu	6 & Up	Sept. 15-Oct.20	5:55pm-6:40pm	5/12	\$60/\$90
117597	Ballet/Lyrical	Tu	7 & Up	Sept. 15-Oct.20	6:45pm-7:45pm	5/12	\$80/\$120
117598	Parent/Tot	W	18-36 mo.	Sept. 16-Oct. 21	9:15am-9:45am	5/12	\$40/\$60
117599	Tiny Tot	W	2.5-3	Sept. 16-Oct. 21	9:55am-10:25am	4/8	\$40/\$60
117600	Creative Movement	W	3-4	Sept. 16-Oct. 21	10:30am-11:15am	5/10	\$60/\$90
117601	Ballet/Jazz	W	6 & Up	Sept. 16-Oct. 21	4:30pm-5:30pm	5/12	\$80/\$120
117602	Pre-Ballet/Tap	W	4-5	Sept. 16-Oct. 21	5:35pm-6:20pm	5/12	\$60/\$90
117603	Kinder-Ballet/Tap	W	5-6	Sept. 16-Oct. 21	6:25pm-7:10pm	5/12	\$60/\$90
117604	Jazz & Tap	W	6 & Up	Sept. 16-Oct. 21	7:15pm-8:00pm	5/12	\$60/\$90
117606	Pre-Ballet/Tap	Th	4-5	Sept. 17-Oct. 22	9:30am-10:15am	5/12	\$60/\$90
117608	Creative Movement	Th	3-4	Sept. 17-Oct. 22	10:20am-11:05am	5/10	\$60/\$90
117610	Parent/Tot	Th	18-36 mo.	Sept. 17-Oct. 22	11:10am-11:40am	5/12	\$40/\$60
117612	Kinder - Ballet/Tap	Sa	5-6	Sept. 19-Oct. 24	9:00am-9:45am	5/12	\$60/\$90
117615	Pre-Ballet/Tap	Sa	4-5	Sept. 19-Oct. 24	9:50am-10:35am	5/12	\$60/\$90
117616	Creative Movement	Sa	3-4	Sept. 19-Oct. 24	10:40am-11:25am	5/10	\$60/\$90
117617	Tiny Tot Dance	Sa	2.5-3	Sept. 19-Oct. 24	11:30am-12:00pm	4/8	\$40/\$60

## Dance for Adults

### Swing Dance

Ages: 18 & Up

Swing Dance, known also as Jitterbug and East Coast Swing, is a very popular and versatile dance. This class will teach you how to dance swing with ease and confidence. Basic lead and follow techniques will be covered in addition to many popular patterns. Class is open to couples, as well as singles! Instructor: Diane Smith. Location: Spring Avenue Recreation Center, 185 Spring Avenue. Min/Max: 8/30. No class: 11/26. (ts)

**R/NR** - \$50/\$75

117518	Th	9/10-10/15	6:30-7:30pm
117519	Th	10/22-12/3	6:30-7:30pm

### Salsa Dance

Ages: 18 & Up

Salsa is an easy and energetic dance to learn, and in no time, you will be ready to show off your moves on the dance floor. Class covers basic patterns such as the lead and follow technique in addition to various styling tips for each individual. This class is for singles or couples alike. The fee is listed per person. Instructor: Diane Smith. Location: Spring Avenue Recreation Center, 185 Spring Avenue. Min/Max: 8/30. (ts)

**R/NR** - \$50/\$75

117522	W	9/9-10/14	7-8pm
117523	W	10/21-11/25	7-8pm

### Ballroom Dance

Ages: 18 & Up

Here's your chance to tackle the dance floor! Learn the basics of Waltz and Foxtrot. Register you're your favorite partner and spend an enjoyable, fun and energy-packed dance session. You'll be ready to hit the dance floor in no time. Fee is listed per person. Instructor: Diane Smith. Location: Spring Avenue Recreation Center, 185 Spring Avenue. Min/Max: 8/30. No class: 11/26. (ts)

**R/NR** - \$50/\$75

117520	Th	9/10-10/15	7:30-8:30pm
117521	Th	10/22-12/3	7:30-8:30pm



# Ackerman SFC

800 St. Charles Road, Glen Ellyn • (630) 317-0130 • AckermanSFC.com

## Facility Hours

### FITNESS CENTER/WALKING TRACK

Monday-Thursday ..... 4:30am-10pm  
 Friday ..... 4:30am-9pm  
 Saturday ..... 6am-7pm  
 Sunday ..... 7am-7pm

### FRONT DESK

Monday-Friday ..... 5am-9pm  
 Saturday ..... 6am-6pm  
 Sunday ..... 7am-6pm

### HOLIDAYS

September 7 (Labor Day) ..... 7am-1pm

## Equipment

- PRECOR Adaptive Motion Trainers
- PRECOR EFX Ellipticals with Crossramp
- Matrix and Life Fitness Treadmills
- NuStep Recumbent Steppers
- Matrix, Octane, & Life Fitness Ellipticals
- Matrix ARC Trainers
- Matrix Bikes (Recumbent/Upright/Hybrid)
- Matrix Single Station Strength Machines
- Gauntlet Stairmasters
- Scifit Pro2 Trainers
- Concept 2 Rowing Machines
- Xerball & Medicine Ball
- Free Weights & Core Conditioning
- Stretching & CrossFit Area w/TRX Straps
- Cable Cross Weight Machines

## Amenities

- 7,000+ square foot fitness center
- 3 court gymnasium
- Full-size indoor turf field
- 2 lane indoor track (10.3 laps = 1 mile)
- Indoor rock climbing wall
- Group fitness studio
- Childcare (2 hours/day for members)
- Locker rooms and shower facility
- Complimentary towels
- Free Wi-Fi



# Fitness Memberships

## Your Membership Includes:

- Fitness center and indoor track access
- More than 55 free weekly group fitness classes
- FREE childcare for up to two hours per day
- Open gym/turf access during open hours
- Indoor rock climbing wall access during open climb hours
- Orientation with a personal trainer
- Bring a guest on the first Wednesday of the month
- Use of the Spring Avenue Fitness Center
- Option to add a College of DuPage pool pass

## Fitness Membership Fees

We will automatically charge your membership fees to the credit/debit card you place on file each month.

Membership Type	MONTHLY FEES	
	Resident*	Nonresident
Teen**	\$21	\$23
Senior**	\$21	\$23
Active Military	\$21	\$23
Individual**	\$30	\$35
Couple***	\$50	\$55
Family***	\$60	\$65

## RATE NOTES

\***Residents** are defined as those living within Glen Ellyn Park District boundaries.

\*\*Must provide proof of age if requested. A **teen** is defined as a person age 14-17 (age 11-13, if certified). Waiver must be signed by a parent or legal guardian. An **individual** is defined as a person age 18 & up. A **senior** is defined as a person age 60 & up.

\*\*\*A **family** is defined as up to six immediate family members residing in the same household and children 26 years and younger living at home. Other relatives and individuals in the same household are not included in the family pass. Children 10 years and under have access to open turf, open gym, and open climb. Children 8 to 13 can access the track with a parent. Fitness center is available for children 14 years and older (age 11-13 after orientation; see front desk to set up an appointment). A **couple** is defined as two people living at the same address.

## Work in Glen Ellyn?

Ackerman SFC offers special membership rates to Glen Ellyn employees and teachers with proof of employment. Call (630) 317-0130 or visit the Ackerman SFC front desk for more details.



## Safety Measures

- Face coverings will be required of staff and required for members when in the common areas or when 6-feet of social distancing cannot be maintained. Face coverings can be removed once at exercise station of choice or when participating in a class or training session. If you have a medical condition that limits your use of PPE please inform the Ackerman SFC staff during arrival.
- Added hand sanitizing stations throughout the facility
- Frequent disinfection of surfaces and equipment
- Reduced customer capacity
- Staggered group fitness class
- Identified ingress/egress
- Sneeze guards at front desk
- Daily self-wellness checks for staff

## WERQ-A-Thon

**October 10 • 2:30 to 4:30 p.m.**  
**\$10 donation • Code: 118513**

Party with our WERQ instructors and help support The Breast Cancer Research Foundation for the Cure in the fight to end breast cancer. Proceeds from the event will be donated to The Breast Cancer Research Foundation. The minimum donation is \$10 which includes 2-hours of dancing and an ASFC giveaway. All ages are welcome.

Location: 800 St. Charles Road, Glen Ellyn. (sl)



**View trainers  
and trainer bios at  
AckermanSFC.com**

# Personal Training

## Reach your goals.

Our certified personal trainers will design a program that meets your specific fitness needs. They can help you reach and/or maintain your goal by guiding you through safe, productive, supervised workouts. All new clients receive a free one-hour orientation with a personal trainer. Please see the front desk to setup your sessions and visit AckermanSFC.com to learn more about our personal training staff. Prices subject to change.

### 30-MINUTE SESSIONS

Number of Sessions	Member	Non-Member
1 Session	\$29	\$49
3 Sessions	\$84	\$126
6 Sessions	\$150	\$225
12 Sessions	\$282	\$423

### 1-HOUR SESSIONS

Number of Sessions	Member	Non-Member
1 Session	\$45	\$60
3 Sessions	\$130	\$175
6 Sessions	\$255	\$340
12 Sessions	\$500	\$638

### PARTNER TRAINING: 1-HOUR SESSIONS, FEE IS PER PERSON

Number of Sessions	Member	Non-Member
1 Session	\$35	\$45
3 Sessions	\$100	\$135
6 Sessions	\$188	\$245
12 Sessions	\$330	\$380

# Walking Track

The track is free for Ackerman members. Ages 8-13 must be accompanied by a member age 18+ to use the walking track.

The track will be open for up to 15 members at one time. Social distancing must be practiced on the track. Track hours match the fitness center hours listed above. If, there is a wait, 40-minute limit from the time you started.

### DAILY DROP-IN FEES

Resident .....	\$3
Nonresident .....	\$5

### ANNUAL PASSES

*Glen Ellyn Park District residents only.*

Individual (Ages 8-59).....	\$25
Senior (Ages 60 & Up).....	\$10



# Group Fitness Classes

Group fitness classes are included as part of the Ackerman SFC member fee. Both indoor and select outdoor fitness classes will be offered during Phase 4 utilizing the exterior of the facility, gym, and fitness studio. All classes will be socially distanced and limited to up to 35 participants depending on location. Class participants are asked to bring their own exercise mats and towels, to each class, as these high-touch items will not be available.

To view the current class schedule, please visit: [ackermansfc.com/group-fitness](http://ackermansfc.com/group-fitness).

# Open Pickleball

This game is played on a badminton-sized court with an oversize ping pong paddle and wiffle ball. You can visit usapa.org for videos/guides to the rules of the game, but the best way to learn is to try it out!

### HOURS

Visit [ackermansfc.com/pickleball](http://ackermansfc.com/pickleball) for the current schedule.

### FEES

Ackerman SFC member .....	Free
Daily Drop-in.....	\$3R/\$5NR
10-Visit Punch Card.....	\$25R/\$35NR

## Fit & Play

Ackerman SFC staff will provide children with an organized, safe, and fun environment that is health and wellness orientated. Individual games, activities and crafts will be lead by staff which is a great way for children to interact with each other while staying active under the Restore Illinois Guidelines. Pre-registration is required and limited to 10 children per time slot. Drop off and pick-up time is strict and all children must be potty trained and must wear a face covering during their fit & play time. Visit [gepark.org/register](http://gepark.org/register) to see available dates and times; registration will open one week prior to fit & play session.

## Open Courts

Ackerman SFC members can sign up for a one-hour time slot for open court. Face masks are required and strictly enforced anytime participants are not actively participating on the court/turf including: entering/exiting the facility, having a water break and going to the bathroom. Participants must bring their own equipment and practice social distancing. Time slots will be limited to 15 participants. Visit [gepark.org/register](http://gepark.org/register) to see available dates and times; registration will open one week prior to open court time slot. Open turf is not available at this time.

## Indoor Rock Climbing

The rock wall will not be available until further notice. As more information is released by public health agencies, Ackerman SFC will evaluate and determine how to safely open this amenity. Please call (630) 317-0130 for updates or visit [ackermansfc.com](http://ackermansfc.com).

## Gym, Turf, & Rock Wall Rentals

### Practices, Staff Outings, Tournaments, Corporate Events, and More!

Ackerman SFC is the perfect venue for a wide variety of events. The indoor turf, basketball courts, rock wall, and bounce houses are available year-round to rent for practices, games, parties, staff outings, and more. Discount pricing is available for off-peak rental times and months. Contact Ryan Miller at (630) 317-0134 or [rmiller@gepark.org](mailto:rmiller@gepark.org) for pricing and availability.

## Sports Training

### BASKETBALL TRAINING

Sign up for private lessons from Skill Development Coach Brett Love. Brett has high school and collegiate level playing experience with the credentials to train players to take their skills to the next level. Sessions starting at \$45, see the front desk for details.

### VOLLEYBALL TRAINING

All-State Coach Christine Giunta-Mayer from Glenbard West offers private lessons to any student-athlete/athletes that want to focus on specifics of their game. Boys and Girls 5th grade through college are given an opportunity to learn from Coach Giunta-Mayer and to work on their game. Sessions starting at \$70, see the front desk for details.

## Lap Swimming at College of DuPage

### Visit [gepark.org/cod](http://gepark.org/cod) for the status of College of DuPage's indoor pool.

Glen Ellyn Park District and College of DuPage have partnered to offer Ackerman SFC members an exclusive opportunity. Active Ackerman SFC fitness members may now purchase a lap swimming monthly membership to swim at College of DuPage's indoor pool for just \$15 per member per month.

### ELIGIBILITY

To take advantage of this offer, you must have an active Ackerman SFC fitness membership and be 16 years of age or older. Members that are ages 16-17 must have a parent/guardian sign the College's waiver of liability. Walking track only members are not eligible for this offer.

### GET STARTED NOW

To sign up, you must visit the College's Member Service Office where they will setup your membership. C.O.D. indoor pool hours are available at [www.gepark.org/COD](http://www.gepark.org/COD).



## **Sports Performance & Functional Fitness**

**Maximize Your Potential!**

HGA is a fully-customized strength & conditioning program for clients looking to maximize their fitness potential:

- **Beginner to Elite-Level Programming**
- **Athletes and Non-Athletes**
- **Individual and Group Training**
- **Sport-Specific Training Techniques**
- **Assessments and Goal Setting**
- **Mobility & Flexibility Training**
- **Nutrition Support**
- **Proven, Measurable Results**

HGA is growing with over 7000 sq. ft. of expanded training space!

- **Power Racks and Bumper Plates**
- **Olympic Lifting Platforms**
- **Prowler Sleds and Flipping Tires**
- **Battle Ropes and Sand Bags**
- **Resistance Bands For Speed/Power**
- **And Much More...**

### **Group & Team Training Available!**

- **Specialized Training Programming for Boot Camps and/or Teams looking to prepare for the upcoming season. Please contact HGA to learn more!**



**630-674-0335**

**email@hgathletics.com**

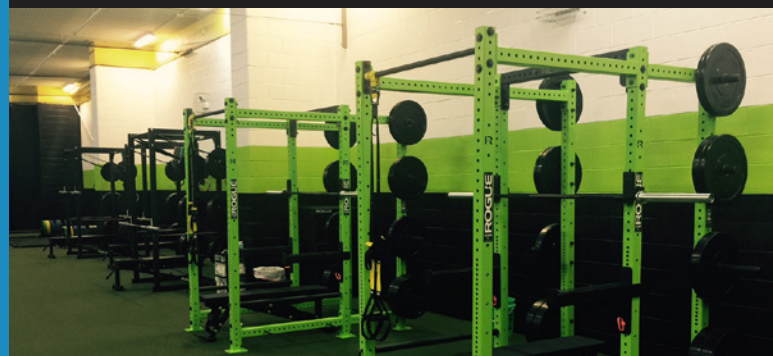
# Fit4Mom Stroller Strides

Stroller Strides is a complete strength training program that allows moms to get in shape while working out with their child. Taught by certified instructors, each class is targeted for all fitness levels, and includes power walking and body toning intervals using the environment and strollers. Engaging children in songs and activities, along with offering support from other moms in the community, the Stroller Strides workout is fun and unlike any other! We welcome babies from 6 weeks to any age!

Classes are offered Monday, Wednesday and Fridays from 9:30-10:30am at Ackerman Sports & Fitness Center. First class is free!

#### **TO REGISTER**

Register with Lesley Lehman, Stroller Strides Instructor.  
Call: (630) 460-9930; e-mail: [dupageco@fit4mom.com](mailto:dupageco@fit4mom.com);  
or log on to: [dupagecounty.fit4mom.com](http://dupagecounty.fit4mom.com)



# Spring Ave. Fitness Center

185 Spring Avenue, Glen Ellyn • (630) 858-2462

## Membership Fees

Annual memberships are valid for one year from the date of purchase.

Ackerman SFC fitness members have full access to Spring Avenue Fitness Center and group fitness classes.

### INDIVIDUAL FEES (AGES 14-59)

Annual Pass..... \$245R/\$365NR  
3-Month Pass..... \$135R/\$195NR  
1-Day Pass..... \$7R/\$8NR

### SENIOR FEES (AGES 60 & UP)

Annual Pass..... \$120R/\$180NR  
1-Day Pass..... \$4R/\$6NR

## SilverSneakers

If your Medicare health plan, Medicare supplement carrier, or group retiree plan includes SilverSneakers as part of your benefit package, you can work out at no extra cost. Visit the Spring Avenue front desk to learn more.

## What You'll Find

- Treadmills, Ellipticals, Rowing Machine
- Recumbent Bikes
- Free Weights
- Dual-Station Strength Machines
- Lockers and Showers
- Equipment Orientation

## Center Hours

### FITNESS CENTER HOURS

*Hours subject to change according to use.*

Monday-Thursday.....6am-8pm  
Friday..... 6am-5pm  
Saturday..... 9am-12pm  
Sunday..... 10am-12pm

### HOLIDAY HOURS

*Members may use Ackerman SFC with photo ID at no cost during holiday closings.*  
Labor Day (9/7)..... Closed

## Group Fitness Classes

Spring Avenue Fitness members can take group fitness classes offered at the Spring Avenue and Main Street Recreation Centers for no cost!

Visit [ackermanSFC.com/groupfitness](http://ackermanSFC.com/groupfitness) to view the schedule and look for SARC, SARC FC, and MSRC under location.



# Community Events

While large-scale events are unlikely to proceed in 2020 due to the coronavirus pandemic, the Glen Ellyn Park District continues to closely monitor recommendations of county and state health organizations to determine the best way to safely serve our community.

Should Illinois move into Phase 5 of the Restore Illinois Plan, we will announce event additions via our social media pages, website, and email newsletter. We encourage you to explore our smaller events which have been modified to align with current guidelines including Boo Bash Trick-or-Treat Trail and WERQ-a-thon.

The District looks forward to once again being able to provide special events for the public as soon as it is feasibly safe to do so.

WHERE PETS COME TO PLAY.



*Spring Avenue*

# Dog Park

Unleash some fun at this popular outdoor park where dogs can exercise, play, and socialize off-leash. Your four-legged friend will pawsitively love it! View membership options, available to residents and nonresidents, at: [gepark.org/dog-park](http://gepark.org/dog-park)

# Rentals

Planning your next big event? We offer a wide variety of affordable indoor and outdoor venues. Deposits may be required with some rentals. Space is available on a first come, first served basis.

**Bookings are still being accepted; however, under Phase 4 guidelines of the Restore Illinois Plan, rentals/events attendance will be limited to 50 or less. Additional restrictions may apply.**



## Ackerman SFC

**800 St. Charles Road, Glen Ellyn**  
Three full-size basketball courts and an indoor artificial turf field are available to rent for practices, games, parties, and more. The facility also features two 30' climbing walls, an outdoor volleyball court, and a party room.  
**Contact:** Ryan Miller at (630) 317-0134



## Sunset Pool

**483 Fairview Avenue, Glen Ellyn**  
Private pool rentals are available for picnics, neighborhood parties, birthdays, group outings and more. The pool is available to rent on Friday and Saturday evenings from early June through late August. **Contact:** Chad Shingler at (630) 317-0137



## Spring Avenue Recreation Center

**185 Spring Avenue, Glen Ellyn**  
Spring Avenue Recreation Center can accommodate a variety of events. A single classroom (up to 30 people) or the craft lab (up to 50 people) are available to rent. **Contact:** Mary Defiglia at (630) 858-2463 x 2203



## Maryknoll Park Clubhouse

**845 Pershing Avenue, Glen Ellyn**  
Room rental includes tables and chairs. Renter may bring in their own food. Alcohol is permitted with a liability contract. The maximum number of guests is 60. Room size is 25' x 40'. **R/NR Fee:** \$85/\$110 per hour; add \$210 for alcohol liability. The outdoor patio is available to rent with your room rental for a \$30 fee. **Contact:** Mary Defiglia at (630) 858-2463 x 2203



## Main Street Recreation Center

**501 Hill Avenue, Glen Ellyn**  
Conveniently located near downtown Glen Ellyn! Rent a single classroom (up to 30 people), double classroom (up to 50 people), or the dance room (up to 15 people). **Contact:** Mary Defiglia at (630) 858-2463 x 2203



## Maryknoll Park Picnic Pavilion

**845 Pershing Avenue, Glen Ellyn**  
This pavilion can accommodate up to 50 patrons or less. There is a maximum of 7 picnic tables that can be set up for your exclusive use. No alcohol, grills, pets, inflatables, additional tables or piñatas allowed. **Contact:** Mary Defiglia at (630) 858-2463 x 2203



## Athletic Fields

The Glen Ellyn Park District has fields available for soccer, baseball or softball: Ackerman Park, 800 St. Charles Road; Village Green, 130 S. Lambert Road; or Newton Park, 707 Fairview Avenue.

**Village Green & Newton Parks:**  
(630) 942-7290

**Ackerman Park :**  
Grass Fields: (630) 942-7288  
Synthetic Turf Field: (630) 317-0134

**2-Hour Rental Fees:**  
1-30 Guests .....\$50R/\$75NR  
31-50 Guests .....\$80R/\$105NR

*Maryknoll Park Public Shelter with bathrooms is not meant for groups or patrons staying more than 30 minutes. This shelter is for small groups of patrons wishing to have a quick snack or lunch between park play.*





## Block Party Wagons

In cooperation with the Village of Glen Ellyn, the Park District is offering free use of the Block Party Wagon, April 1 through October 31, weekends only. The wagon will contain everything you will need at your block party including:

- 10ft x 10ft Tent
- 100 Chairs
- Ten 8-foot Tables
- Large Outdoor Grill
- Bean Bag Toss Game

Please call for more information. **Contact:** Kimberly Dikker at (630) 942-7256.

*Reserving a Block Party Permit through the Village of Glen Ellyn does not reserve the Block Party Wagon for your event (and vice versa). You must contact each agency separately. Reservations for the Block Party Wagon must be made through the Park District.*



## 2020 Garden Plots

130 S. Lambert Road, Glen Ellyn

Do you love to garden, but no space? We can help! Grow your own organic produce by renting a garden plot.



Located within Village Green Park, plots measure 10' x 10' or 20' x 20'. **Contact:** Renae Frigo at rfrigo@gepark.org.

### Garden Plot Season:

May 1 to November 1 (weather permitting)

# Lake Ellyn Boathouse

645 Lenox Road, Glen Ellyn

Located just 25 miles from downtown Chicago, this unique landmark house was built in 1937 as a community facility and was fully restored to its historic beauty in 2016. Beautifully placed along Lake Ellyn, the Boathouse has been home to numerous wedding ceremonies, receptions, anniversary parties, birthdays, and more.

Inside, enjoy the spaciousness of an 1,840 square-foot hall which can accommodate seating for up to 120 guests. The adjoining terrace and deck are also available to rent (for an additional fee) when renting the Boathouse.

**View rental rates and the availability calendar online at: [www.gepark.org/boathouse](http://www.gepark.org/boathouse)**

**Contact:** Jeannie Robinson at (630) 942-7267 or jrobinson@gepark.org.



## Spring Avenue DOG PARK

### Unleash some fun at the dog park!

Keep yourself and your four-legged friend safe by practicing social distancing when visiting the dog park. The Spring Avenue Dog Park features a large open play area, swipe card entry for security, disposal bags and receptacles, picnic tables, benches and free parking. This is the only Glen Ellyn Park District location where off-leash dogs are allowed. Dog owners need a permit for each dog they bring (up to two dogs).

### Purchase/Renew a Dog Park Membership

An annual permit is required for each dog visiting the dog park and is valid for one year from date of issue. To buy a permit, visit the Spring Avenue Recreation Center during business hours. Dog owners must provide: completed permit application, proof of residency (current driver's license, tax statement, or utility bill), paper copy of rabies vaccination (not tags), and payment.

The dog park resident fee is \$35 for one dog and \$65 for two dogs (\$80 and \$130 for nonresidents, respectively). Applications and waivers are available at: [www.gepark.org/dog-park](http://www.gepark.org/dog-park)

## Boating & FISHING

### Passenger Boating

Non-motorized passenger occupied boating is allowed on Lake Ellyn by permit only. To purchase a permit, bring or mail a copy of your completed boat permit application, available at [gepark.org/boating](http://gepark.org/boating), to Glen Ellyn Park District, 185 Spring Avenue, Glen Ellyn, IL 60137. Permits, which must be affixed to your watercraft, will be provided once applications have been approved. Permit Fee: \$5.

- Boating is allowed between sunrise and sunset from May 1 to Nov. 1.
- Boaters must practice social distancing and adhere to current State boat occupancy guidelines. Users should ensure they are ready to depart quickly from the ramp or dock as soon as their boat is put into the water to avoid congregation.
- Watercraft are not permitted on Lake Foxcroft.

### Model Boating

Model Boating is allowed on Lake Ellyn and Lake Foxcroft. "Model Boats" refer to electric or radio-controlled boats or sailboats that have maximum speeds of 15mph or slower. Model Power Boating is strictly prohibited.

### Fishing Information

Fishing on Park District waters requires any angler who is 16 years of age and older to carry a valid Illinois fishing license. Fishing license information can be found on the Illinois Department of Natural Resource's website at [dnr.illinois.gov/fishing](http://dnr.illinois.gov/fishing). All fishing is catch and release only. Ice fishing is prohibited.



## Tennis & Pickleball COURTS

Serve up some fun this summer!

Glen Ellyn Park District's outdoor hard court tennis and pickleball courts are open to the public.

- **Newton Park:** Two tennis courts also lined for pickleball.
- **George Ball Park:** Six tennis court.
- **Village Green Park:** Four pickleball courts as well as one tennis court which is also lined for pickleball.
- **Sunset Park:** Both courts at Sunset Park are open for play.

**The following guidelines will need to be followed for the courts to remain open:**

- Social distancing required: Before and after play, players must maintain a minimum distance of 6 feet from all others. The use of face masks is required for all doubles match play.
- All spectators and players waiting for a court must remain outside of the fence until a court becomes available and social distancing procedures must always be practiced.
- Private lessons of any kind are not allowed unless authorized by the Glen Ellyn Park District.
- Courts cannot be used for alternative activities including off-leash dogs.
- Courts close at dusk at Newton and Village Green Parks; 10pm at George Ball and Sunset Parks.
- Please be vigilant in preventing the spread of germs by practicing good hygiene. If you or any members of your family are ill or become ill, you should remain home.



## Newton Park SKATE PARK

We'll see you on the ramps!

Located within Newton Park, our community skate park is well-suited for skateboard enthusiasts of all levels and is completely free to use. The 80' by 160' area features a variety of ramps, platforms, and obstacles that make practicing tricks fun and easy.

Helmets are mandatory in the skate park. The park is open to skateboards, scooters, and inline skates (no bicycles). The skate park is unsupervised and participants skate at their own risk.

### Features

- 3' Hipped Bank
- 1' HUD Box
- 14" Round Ground Grind Rail
- 4' Quarter Bank
- 5' Mini Ramp
- 5' Trani-Bank
- 5' Quarter Pipe
- 6' Roll-In
- 2'-6' Base Box with Rail
- 3' Launch with Planter
- 5' Hipped Quarter Bowl
- 6' Quarter Pipe

### Skate Park Summer Hours

The Skate Park is open from 9am to dusk.

Ages 12 & Under: Tuesday, Thursday, and Saturday, 9am to 12pm  
Park will be closed during inclement weather or when equipment is damaged.



## Natural Grass & Synthetic TURF FIELDS

### Newton Park Synthetic Turf Field

The synthetic turf field located at Newton Park, 707 Fairview Avenue, is available for use by up to 50 patrons with social distancing when not in use by the Glen Ellyn Park District.

Activities taking place must be appropriate for the field and all equipment is subject to Glen Ellyn Park District oversight and approval. Please note, hitting golf balls, baseballs, or softballs is prohibited for the comfort and safety of all visitors.

### Ackerman Park Synthetic Turf Field

The synthetic turf field located at Ackerman Park, 800 St. Charles Road, is available for use by up to 50 patrons with social distancing when not in use by the Glen Ellyn Park District.

### Natural Grass Areas/Fields

Natural grass areas/fields or open spaces at any Glen Ellyn Park District park may be used by groups of 50 or less with social distancing. Please follow current CDC guidelines when enjoying the park.

## Baseball & Softball FIELDS

Fields are open for groups of 50 or less with social distancing. Should a group arrive while you are using the field, please be courteous and limit your playing time to no more than 1.5 hours from the time you began. Appropriate behavior and useage of the fields and park is required.

### Village Green Ball Fields

Located at 130 S. Lambert Road, Glen Ellyn.

### Ackerman Park Ball Fields

Located at 800 St. Charles Road, Glen Ellyn.

### Newton Park Ball Field

Located at 707 Fairview Avenue, Glen Ellyn.

## Outdoor Basketball COURTS

Full courts are located at Newton Park, Village Green Park, Surrey Park, and Main Street Recreation Center. A half court is also located at Stacy Park. Weekday access will be limited due to Park District camp usage at Main Street.



## Outdoor Ping Pong AND CHESS

### Located at Prairie Path Park

Enjoy a fun game of table tennis or a round of chess in the park! Tables can be found at Prairie Path Park, which is located along the Prairie Path between Park Boulevard and Forest Avenue. Visitors must bring their own paddles, balls, or chess pieces.

## Sand Volleyball COURT

Located within Ackerman Park, the sand volleyball court is available for groups of 50 or less with social distancing during Phase 4 of the Restore Illinois Plan.

## Disc Golf 9-HOLE COURSE

A 9-hole disc golf course is available at Maryknoll Park, 845 Pershing Avenue. Users must provide their own disc during Phase 4 of the Restore Illinois Plan. Disc rentals will resume in Phase 5. The course is open daily from dawn to dusk. Please be courteous of other players and watch for park patrons.

## Bocce Courts and HORSESHOE PITS

### Bocce Courts

Two Bocce courts are available at Maryknoll Park. Users must bring their own equipment.

### Horseshoe Pits

Two Horseshoe pits are available at Maryknoll Park. Users must bring their horseshoes.



# Our Top 10 Trail Picks

## NEAR GLEN ELLYN

### 1. Churchill Park

Nourish your need for nature as you wind your way through woodland, prairie, and wetland habitats. Churchill Park features both paved and woodchipped trails to enjoy. Download a self-guided tour at [gepark.org/tours](http://gepark.org/tours). Located at 271 St. Charles Rd.

### 2. Churchill Woods Forest Preserve

Take a footpath to the banks of the East Branch DuPage River or enjoy the 0.6-mile Regional Trail, which connects to the Great Western Trail. The two main entrances are on the south side of St. Charles Road 0.1 mile and 0.25 mile west of I-355. Operated by DuPage County Forest Preserve.

### 3. Hidden Lake Forest Preserve

The 390-acre Hidden Lake Forest Preserve in Downers Grove is an ideal place to walk, picnic or just relax. It features two lakes and a river, trails, and fishing. The main entrance is on the east side of Route 53, 0.25 mile south of Butterfield Road. Hidden Lake is operated by the DuPage County Forest Preserve.

### 4. Illinois Prairie Path

A well-known path but worth a mention! The Prairie Path can be accessed throughout Glen Ellyn, including at Prairie Path Park which features an outdoor ping pong table, outdoor chess table, and a StoryWalk®.

### 5. Panfish Park

Panfish Park features a 1-mile crushed limestone trail that meanders and loops around a large, scenic pond. The park, operated by Village of Glen Ellyn, is located at 620 Wilson Ave.

### 6. Great Western Trail

This crushed limestone trail follows 12 miles of abandoned railway corridor through DuPage County, between Villa Park and West Chicago. A great spot for cyclists and joggers. An ADA-accessible connection to the trail is available from within Ackerman Park (800 St. Charles Rd.)

### 7. Lake Ellyn Park

Take a stroll around Lake Ellyn or explore the woodchipped pathways within the woodland restoration zone where the Park District is actively working to bring back native plants and protect the oak savanna. Some of the beautiful flowers you'll see blooming in the coming years include Jacob's ladder, wild geranium, wild columbine, and a mix of interesting grass-like sedges. Located at 645 Lenox Rd.

### 8. Lambert Lake Nature Preserve

Take a stroll around Lambert Lake (~0.5 miles) or wind your way through the wooded area (~0.33 miles). Limited parking is available off Taft Avenue or Lambert Road. Operated by Village of Glen Ellyn.

### 9. Willowbrook Wildlife Center

Explore the trails hidden behind Willowbrook Wildlife Center, just over the bridge. The half-mile outer loop and the inner loop wind through 40 acres of restored prairie, woodland and wetland habitats. Located at 5211 W. 111th St.



### 10. Manor Woods & Park

Short trails wind through GE Manor Park, 375 Illinois Street, and through Manor Woods on the north side of the street.



# PARK DO'S & DON'TS

Patrons are encouraged to use parks for individual and family passive activities and limited recreation.



**DO exercise outdoors**  
(e.g. walking, running, biking)



**DO follow social distancing,**  
State, and CDC guidelines



**DO play tennis or pickleball**  
while following current rules



**DO fish at Lakes Ellyn & Foxcroft**  
(catch-and-release only)



**DO hammock respectfully**  
and only on mature trees



**DO leash and clean**  
up after your pet



**DO value and**  
appreciate nature



**DO properly dispose of trash,**  
recycling, and fishing line



**DO have fun and**  
enjoy your parks!



**DO use playgrounds**  
while following current guidelines



**DON'T congregate in**  
groups of over 50 people



**DON'T feed geese or other**  
fowl – it's bad for their health



**DON'T hit golf balls**  
in the parks



**DON'T swim or enter**  
the water



**DON'T smoke or**  
consume alcohol

# EXPLORE *Your* PARKS

## Parks



- 1 Greenbriar Park
- 2 Spalding Park
- 3 Churchill Park
- 4 Stacy Park
- 5 Ackerman Park
- 6 George Ball Park
- 7 Sam Perry Nature Preserve
- 8 Babcock Grove Park
- 9 Benjamin Gault Bird Sanctuary
- 10 Lake Ellyn Park
- 11 Ellynwood Nature Preserve
- 12 Walnut Glen Park
- 13 Frank Johnson Center
- 14 Danby Park
- 15 Prairie Path Park
- 16 Pfuetze Park
- 17 Glen Oak Park
- 18 Marie Ulhorn/President's Park
- 19 Newton Park
- 20 Sunset Park
- 21 Glen Ellyn Manor Park
- 22 Surrey Park
- 23 Maryknoll Park
- 24 Co-Op Park
- 25 Panfish Playground
- 26 Village Green Park
- 27 Lake Foxcroft Park

## Facilities



- A Ackerman Sports & Fitness Center
- B Main Street Recreation Center
- C Spring Avenue Recreation Center
- C Spring Avenue Fitness Center
- C Spring Avenue Dog Park
- D Holes & Knolls Mini Golf + Splash Park
- D Platform Tennis Facility
- E Sunset Pool
- F Lake Ellyn Boathouse

## Schools



- G Ben Franklin School
- H Forest Glen School
- I Churchill School
- J Hadley Junior High
- K Glenbard South
- L Glenbard West
- M Glen Crest
- N Lincoln School
- O Memorial Field
- P Park View School







## Park Features

• Denotes also lined for Pickleball

		Walking Paths/Trails	Playground	Baseball/Softball Field	Basketball Court	Tennis Court	Pickleball Court	Platform Tennis	Sand Volleyball Court	Soccer/Football Field	Splash Park	Outdoor Fitness Equipment	Picnic Shelter/Gazebo	Outdoor Pool	Fishing Pier	Splash Park	Mini Golf	Disc Golf	Skate Park	Ice Skating	Sled Hill
<b>Ackerman Park</b>	800 St. Charles Rd.	•	•	•					•	•		•									
<b>Babcock Grove Park</b>	324 Linden St.		•																		
<b>Churchill Park</b>	271 St. Charles Rd.	•											•								
<b>Co-Op Park</b>	515 Wilson Ave.		•																		
<b>Danby Park</b>	280 Duane St.		•																		
<b>Ellynwood Preserve</b>	801 Ellynwood Dr.	•																			
<b>Benjamin Gault</b>	625 N. Main St.	•																			
<b>George Ball Park</b>	801 Elm St.					•							•								
<b>Glen Ellyn Manor Park</b>	375 Illinois St.	•	•																		
<b>Glen Oak Park</b>	350 Woodstock Ave.		•																		
<b>Frank Johnson Center</b>	490 Kenilworth Ave.		•																		
<b>Lake Ellyn Park</b>	645 Lenox Rd.	•	•												•					•	
<b>Lake Foxcroft Park</b>	2S540 Lambert Rd.	•	•												•					•	
<b>Main Street Rec. Ctr.</b>	501 Hill Ave.		•		•																
<b>Maryknoll Park</b>	845 Pershing Ave.		•					•			•	•				•	•	•			
<b>Newton Park</b>	707 Fairview Ave.	•	•	•	•	•				•		•	•						•	•	•
<b>Panfish Playground</b>	Maintained by GEPD		•																		
<b>Sam Perry Preserve</b>	735 Grand Ave.																				
<b>Pfuetze Park</b>	400 N. Park Blvd.																				
<b>Prairie Path Park</b>	565 Steward Ave.												•								
<b>President's Park</b>	265 Cumnor		•																		
<b>Spalding Park</b>	22W325 2nd St.		•																		
<b>Spring Avenue Rec. Ctr.</b>	185 Spring Ave.																				
<b>Stacy Park</b>	50 Geneva Rd.		•																•		
<b>Sunset Park</b>	483 Fairview Ave.		•			•							•								
<b>Surrey Park</b>	95 Surrey Dr.		•																		
<b>Village Green Park</b>	130 S. Lambert Rd.		•	•	•	•	•					•									
<b>Walnut Glen Park</b>	860 Walnut St.		•																		

# The Fun Starts Here



## Community-Based Recreational Programs and Inclusion Services For Park District Programs

### WDSRA RECREATIONAL & SOCIAL PROGRAMS: IN-PERSON & VIRTUAL

WDSRA provides fun, engaging recreational and social programs, trips, and special events for children, teens, and adults with special needs. Programs are structured to allow everyone to participate at their own ability level. Through WDSRA each individual has the opportunity to grow personally, connect with their community and discover their potential.

- Sports
- Special Olympics
- Music and Dance
- Art and Drama
- Bowling
- Social Clubs
- Special Events
- Adaptive Sports
- Overnight Outings
- Weeklong Trips
- And much more!

### INCLUSION SERVICES

Inclusion Services are designed to provide the least restrictive environment while providing the maximum opportunity to participate in regular park programs. There is no charge for WDSRA support. To register for services, simply indicate that special accommodations are needed on the park district registration form. Two-week advance notice is requested for inclusion support.



with WDSRA

**Charlie Long/WDSRA Golf Classic**

Monday, September 28, 2020  
Arrowhead Golf Club, Wheaton

- Great golf
- Delicious food
- Special treats
- Supports WDSRA programs

Keep up to date on this event & more. Sign Up for our ENEWS! [www.wdsra.com](http://www.wdsra.com)



# DISTRICT POLICIES

## DEFINITION OF RESIDENCY

Not all Glen Ellyn residents are in the Park District. Anyone living within the geographic boundaries of the Glen Ellyn Park District is considered a resident. Glen Ellyn Park District residents, via property taxes, make financial contributions to the operation of the park system. Non-residents are charged higher fees for programs than residents to compensate for property tax disparity.

Residents of Glen Ellyn who are not residents of the Glen Ellyn Park District or any other park district may receive all the privileges of belonging to the Glen Ellyn Park District by paying the equivalent of Park District taxes annually. This membership allows for priority registration, pool passes, and any other services provided to our residents at the resident rate.

## WAIVERS OF LIABILITY

To participate in any Glen Ellyn Park District program, you must sign a waiver releasing the Park District of any liability.

## REFUNDS, CANCELLATIONS

The Glen Ellyn Park District reserves the right to cancel, postpone or combine classes, or change instructors. If insufficient enrollment causes a class to be canceled, notification will be given 7 days in advance, and full tuition refunded. Withdrawals prior to the start of a class will be assessed at minimum a \$5.00 service charge. Refunds for moving, injury/illness, or schedule changes will be pro-rated according to the date the request for a refund is made.

## COMMITMENT TO QUALITY

To encourage first time participation as well as repeat participation, the Park District has a refund policy highlighted by a satisfaction guarantee. This special refund policy provides us with timely feedback about dissatisfaction regarding our services. We can then take prompt action to improve services. If you are not completely satisfied, tell us and we will either: invite you to repeat the class at no charge; allow you a credit that can be applied to another program; issue you a full refund.

Our guarantee is based on fulfilling our promise to deliver the published expectations describing the service you have used. A refund will be granted if you were dissatisfied with the experience due to circumstances under the Park District's control.

Requests for the above-mentioned options must be made before the midpoint of the program or within two weeks of a single meeting activity. All refund requests must be submitted in writing and returned to the Spring Avenue Recreation Center or the Main Street Recreation Center. Satisfaction Guarantee does not apply to trips, special events with prepaid admissions and tickets, and athletic programs where equipment has already been ordered.

## FINANCIAL ASSISTANCE

The Glen Ellyn Park District recognizes there are community residents who may suffer economic setbacks that might preclude their participation in Glen Ellyn Park District programs. Financial assistance forms are available at the Spring Avenue and Main Street Recreation Center. All requests remain confidential. Questions? Contact Kimberly Dikker at (630) 942-7256.

A referral for additional scholarship assistance is now available to qualified resident children under the age of 18 through the Milton Township Youth Committee's Family Youth Scholarship Fund.

## INSURANCE

The Glen Ellyn Park District does not provide medical insurance coverage for individuals who participate in our programs or use our facilities. To do so would make programs and user fees cost prohibitive.

## AMERICANS WITH DISABILITIES ACT

The Americans with Disabilities Act (ADA) prohibits discrimination on the basis of a disability. The Glen Ellyn Park District will make reasonable accommodations in recreation programs to enable participation by an individual with a disability that meets essential eligibility requirements for that leisure program and facility.

If you have questions or believe you have been unfairly discriminated against by the Park District, please contact Nick Cinquegrani at (630) 942-7257. Those who use the Telecommunications Device for the deaf may reach the Park District by calling the Illinois Relay Line at (800) 526-0844.

## NON-DISCRIMINATION STATEMENT

The Glen Ellyn Park District prohibits discrimination in all its programs and activities on the basis of race, color, national origin, gender, religion, age, disability, political beliefs, sexual orientation, marital or family status.

## BEHAVIOR POLICY

Participants are always expected to exhibit appropriate behavior. The following guidelines have been developed to help make Park District programs safe and enjoyable for all participants. Additional rules may be developed for specific programs and athletic leagues as deemed necessary by staff. Participants shall:

1. Show respect to all participants and staff, take direction from staff.
2. Refrain from using abusive or foul language.
3. Refrain from causing bodily harm to self, other participants or staff.
4. Show respect for equipment, supplies and facilities.

A positive approach will be used regarding discipline. Staff will periodically review rules with participants during the program session. If inappropriate behavior occurs, prompt resolution will be sought specific to each individual situation. The Park District reserves the right to dismiss a participant whose behavior endangers the safety of himself /herself or others.

## PARENT'S CODE OF ETHICS

- I will encourage good sportsmanship by demonstrating positive support for players, coaches, and officials at every game and practice.
- I will place the emotional and physical well-being of my child ahead of my personal desire to win.
- I will insist that my child play in a safe and healthy environment.
- I will require that my child's coach be trained in the responsibilities of being a youth sports coach.
- I will remember that the game is for youth – not adults.
- I will do my very best to make youth sports fun for my child.
- I will ask my child to treat other players, coaches, and officials with respect regardless of race, sex, creed, or ability.
- I agree with these rules and understand that the Glen Ellyn Park District Associations have adopted a Zero-Tolerance Policy and that not abiding by these rules may restrict me from attending future games and practices.

## PETS AT EVENTS

The Glen Ellyn Park District asks that everyone please exercise good judgment and leave pets at home when attending events that draw large crowds. Please show respect for other people, yourself and your pet by helping the Park District maintain a safe and healthy environment where all people have the opportunity to participate and enjoy themselves.

## NOTICE OF POSSIBLE CHANGES IN GUIDE LISTINGS

The policies, procedures, requirements, programs, fees and facility availability contained in this Activity Guide represent Park District program and policies at the time of publication. Sometimes changes in the programs (including fees, locations, times, etc.) and policies are necessary after the Activity Guide publication but prior to program commencement or facility operation.

To provide the best services, programs and facilities to the public, the Park District reserves the right to add, to change, modify or delete any program or policies after they have been published. The Park District will attempt to make a reasonable effort to give prompt public notice of any material changes in the programs and policies, but notice cannot be assured. We apologize for any inconvenience this may cause and appreciate your understanding and cooperation.

## ACTIVITY GUIDE DELIVERY

The Glen Ellyn Park District distributes three seasonal Activity Guides: Winter, Spring/Summer and Fall. Activity Guides are typically delivered in March, July, and October. The Glen Ellyn Park District makes every effort to deliver to each resident household and assumes no responsibility for non-delivery.

## PHOTO/VIDEO POLICY

The Glen Ellyn Park District uses pictures or videos of participants to publicize recreation opportunities in our social media, print, and online marketing. If you do not want a picture taken, please tell our photographer. If the picture has already been taken, please contact the Park District at (630) 942-7260.



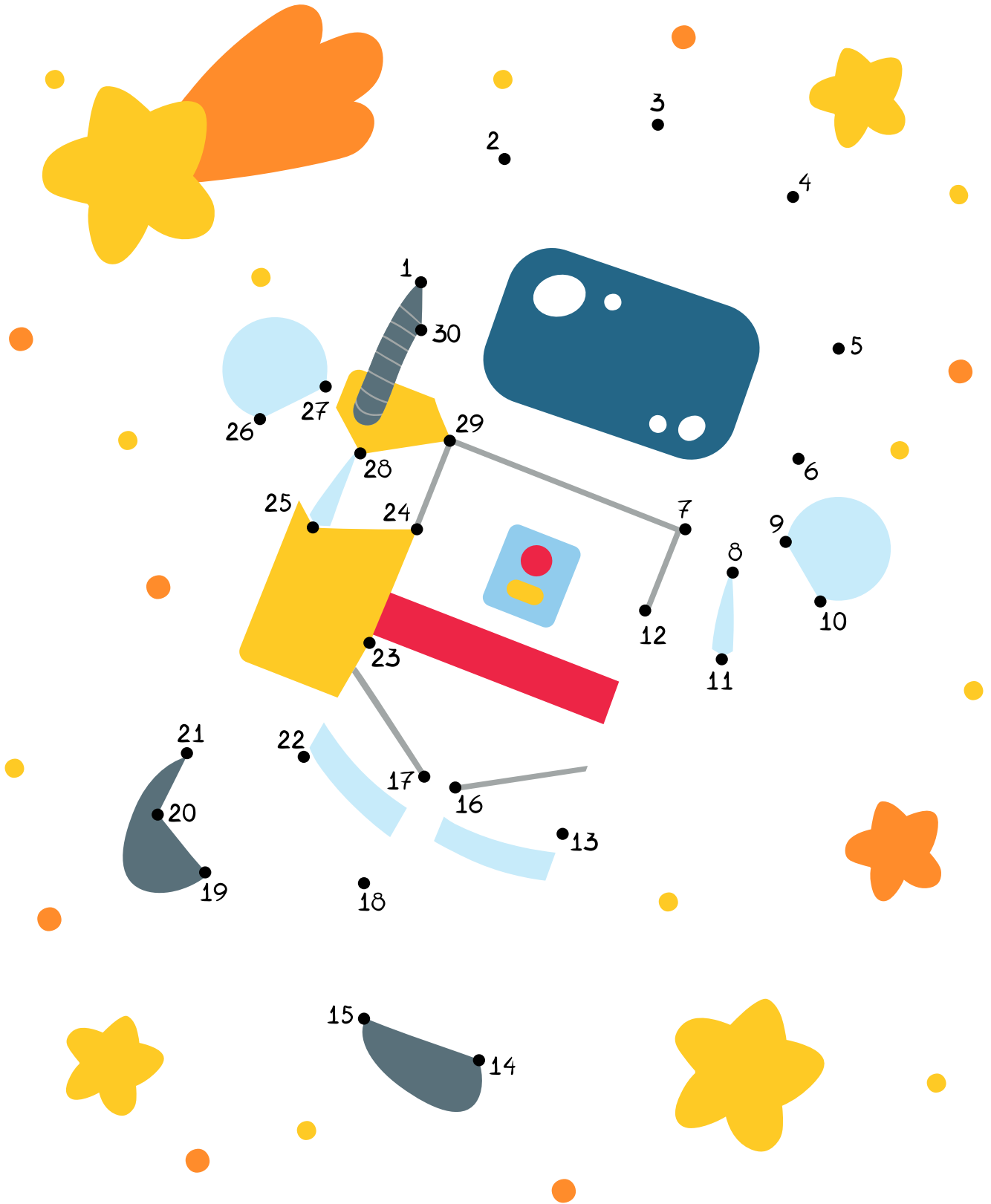
# Activity Mini Book

*Space Edition*

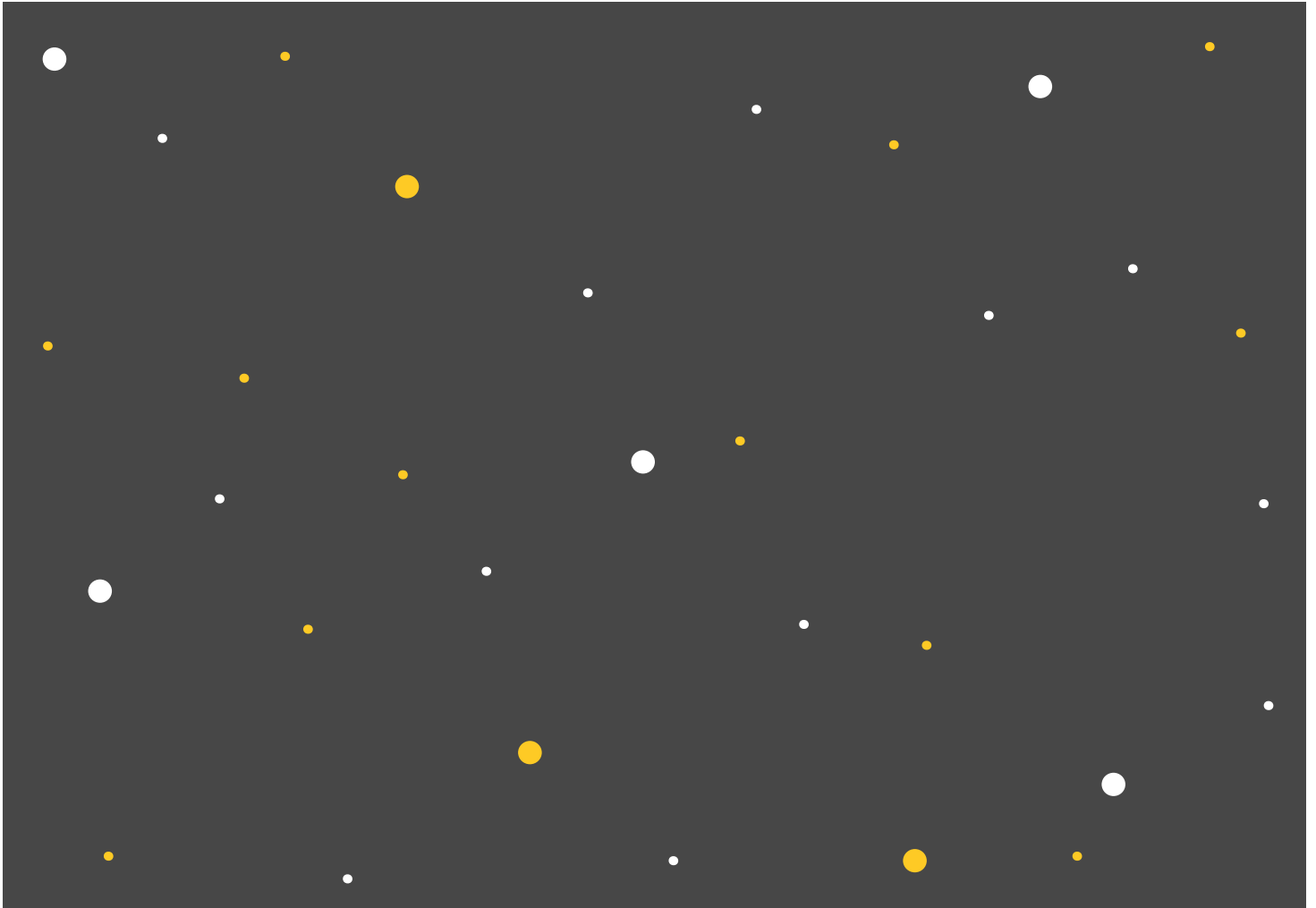


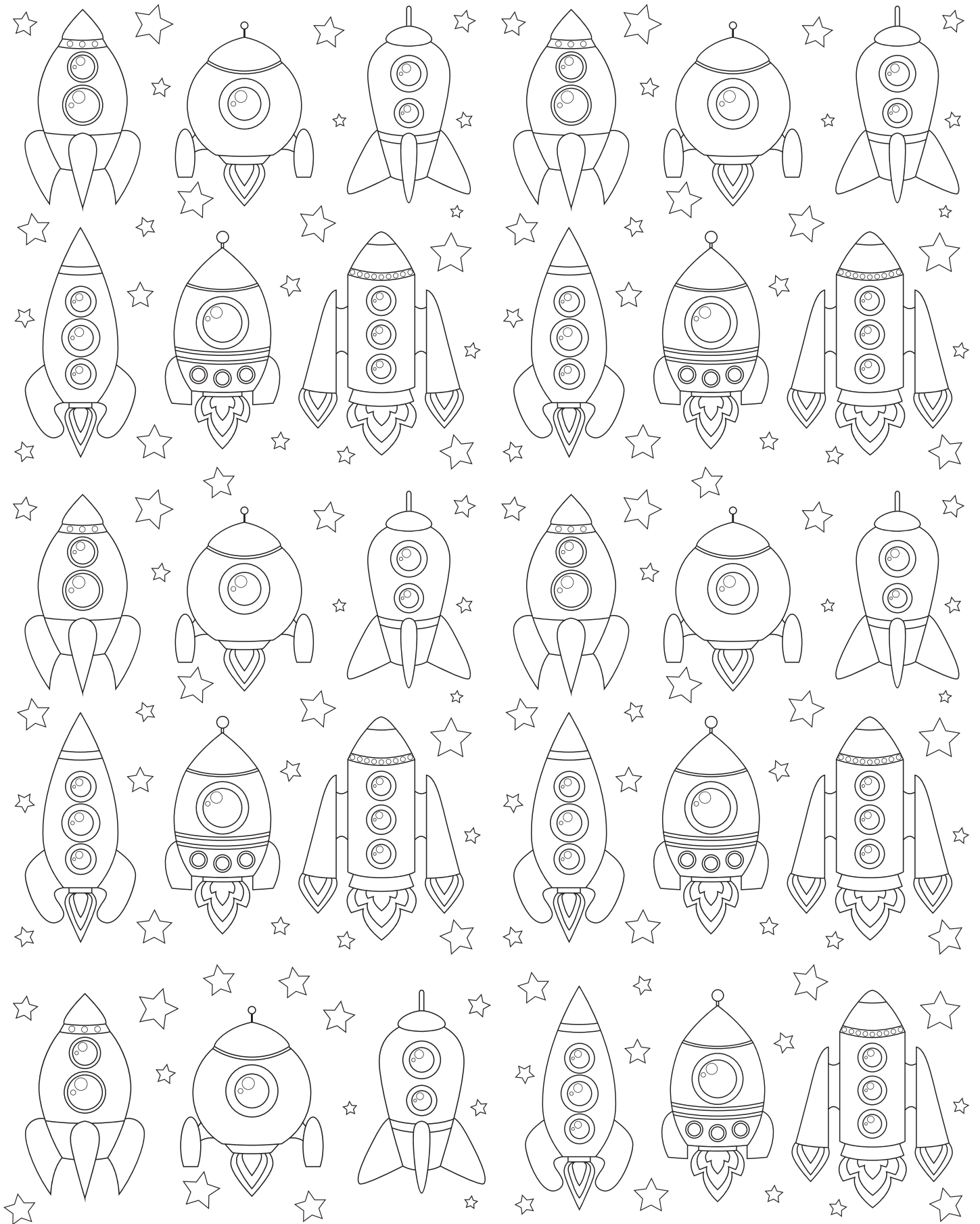
**GLEN ELLYN  
PARK DISTRICT**

# Dot-to-Dot

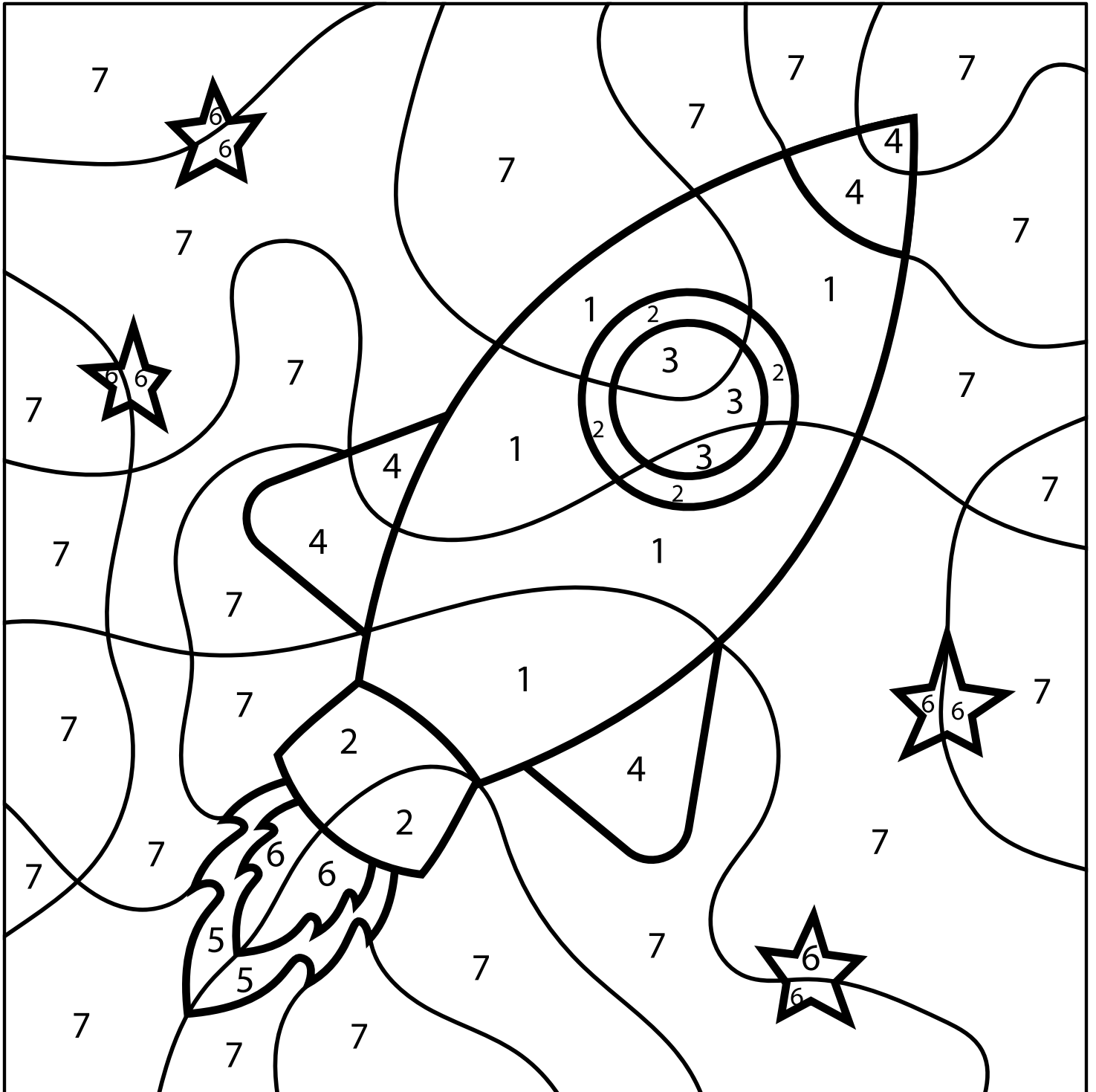


# Cut & Glue





# Color by Number





# Space Rescue

Help the spaceship find its way back to Earth!





# How many words can you make from *The Solar System*

Using each letter only once, how many different words can you make from the letters that spell *The Solar System*? Write down as many as you can on the lines below. Example: am.

1. \_\_\_\_\_
2. \_\_\_\_\_
3. \_\_\_\_\_
4. \_\_\_\_\_
5. \_\_\_\_\_
6. \_\_\_\_\_
7. \_\_\_\_\_
8. \_\_\_\_\_
9. \_\_\_\_\_
10. \_\_\_\_\_
11. \_\_\_\_\_
12. \_\_\_\_\_
13. \_\_\_\_\_
14. \_\_\_\_\_
15. \_\_\_\_\_
16. \_\_\_\_\_
17. \_\_\_\_\_

18. \_\_\_\_\_
19. \_\_\_\_\_
20. \_\_\_\_\_
21. \_\_\_\_\_
22. \_\_\_\_\_
23. \_\_\_\_\_
24. \_\_\_\_\_
25. \_\_\_\_\_
26. \_\_\_\_\_
27. \_\_\_\_\_
28. \_\_\_\_\_
29. \_\_\_\_\_
30. \_\_\_\_\_
31. \_\_\_\_\_
32. \_\_\_\_\_
33. \_\_\_\_\_
34. \_\_\_\_\_



# Outer Space Word Search

L L M E T E O R P T V M G X A  
 A A P T S H U T T L E A R Q T  
 N U C O U N T D O W N R A W M  
 D N A S T R O N A U T S V U O  
 E C N O S T U R A N U S I V S  
 R H B S M N E P T U N E T D P  
 S U N A O C J R Y T P X Y W H  
 A B N T O C U Z V V E N U S E  
 T O E E N O P M E R C U R Y R  
 O O A L E M I K C P L U T O E  
 R S R L K E T X X S T A R L Z  
 B T T I A T E P L U N A R R L  
 I E H T H P R S A T U R N M F  
 T R S E E X P L O R A T I O N  
 C A P S U L E R O C K E T V F

ASTRONAUTS  
 ATMOSPHERE  
 BOOSTER  
 CAPSULE  
 COMET  
 COUNTDOWN

EARTH  
 EXPLORATION  
 GRAVITY  
 JUPITER  
 LANDER  
 LAUNCH

LUNAR  
 MARS  
 MERCURY  
 METEOR  
 MOON  
 NEPTUNE

ORBIT  
 PLUTO  
 ROCKET  
 SATELLITE  
 SATURN  
 SHUTTLE

SUN  
 STAR  
 URANUS  
 VENUS



GLEN ELLYN  
 PARK DISTRICT

# Color by Number

