

ADDENDUM 1

Question 1: In the Instructions to bidders section, it indicates that a bid security in the amount of 5% is required but the bid form states 10%. Which is correct?

Answer: Bid security in the form of 10%

Question 2: Under the General Liability insurance coverage requirements, it states \$2M for each occurrence. Would \$1M be acceptable?

Answer: Yes, \$1M for each occurrence is an acceptable minimum limit amount.

Question 3: Who is the playground manufacturer? Has the equipment been selected and purchased? Who will take delivery, load/unload, etc.

Answer: The playground manufacturer is Kompan and it has been selected and purchased. The Park District will assist in scheduling the delivery but the contractor will be responsible for and unloading at the time of arrival. See attached for cut sheets of each playground feature.

Question 4: What is the bench make/model? Who will take delivery, load/unload?

Answer: The bench make and model is unknown at this time. Each bench will require a concrete footing for each bench. The Park District will take responsibility for delivery of the benches but the contractor will be responsible for the benches once on-site.

END OF SECTION

NRO110 Spinner Plate



Elevated Activities: 0	Accessible Elevated Activities	Accessible Ground Level Activities	Accessible Ground Level Play Types
Present	0	1	1
Required	0	1	1

The Spinner Plate is highly challenging balance trainer for the school age children and combines spinning and rocking in one. The Spinner Plate can be used by 1-3 persons, standing or seated. Trains hand-eye coordination, fine motor skills, understanding of cause-and effect and supports creativity and verbal communication. Trains the vestibular system and helps children understand 'cause and effect'. Balancing trains the vestibular system and improves the sense of balance and motor stability of the child.

Product Line	Organic Robinia
Category	Traditional play, Sand and water play
Age from	5 - 12
Max. fall height (CM)	43
Total height (CM)	43
Safety Zone	9.6 m2

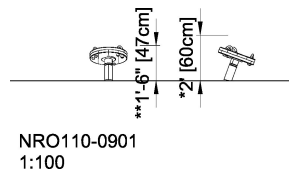
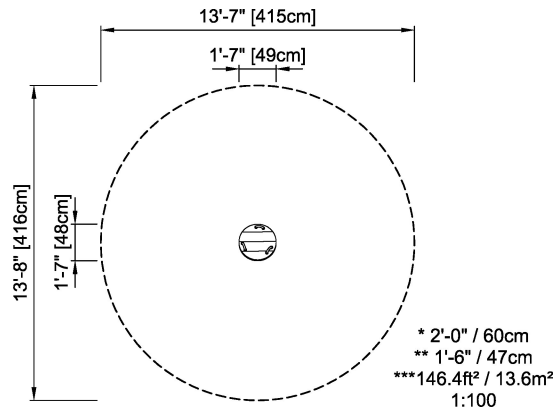


IN-GROU.



ASTM

SUR-FACE



* = Highest designated play surface.
** = Total height of product.

Weight/heaviest parts	kg.	Installation (Manpower)	Persons
Concrete required	NaN m3	Installation (Hours)	Hours
Foundation amount/footing	NaN	Excavation	NaN m3



To verify product certification, visit www.ipema.org

Highest designated play surface and space required are according to ASTM F1487. Equipment must be installed over resilient surfacing appropriate to the safety guidelines in your area. Product development is an ongoing process. We reserve the right to make modifications on all our products. This product may not be mirrored, scaled or altered in any way. Safety zones must be retained for proper placement of equipment. If any changes are required, please contact your KOMPAN representative at 1.800.426.9788.

NRO409

The Wizards Hideaway ADA



Elevated Activities: 2	Accessible Elevated Activities	Accessible Ground Level Activities	Accessible Ground Level Play Types
Present	2	1	1
Required	1	1	1

The magical Wizard's Hideaway with the elevated house and blue roof invites dramatic play as few others. The benches and table inside stimulate social interaction and make longer stays desirable. A table on the side of the house invites meeting and provides a nice seat for care givers. The stair up to elevated level and the double slide benefit motor skills such as cross coordination and spatial awareness. These are both fundamental for building up an understanding of the body in speed, time and space, a competence important for managing traffic safely. The stairway features a broad transfer platform and good handholds to support children of all abilities in accessing. All in all, hours of magic play together.

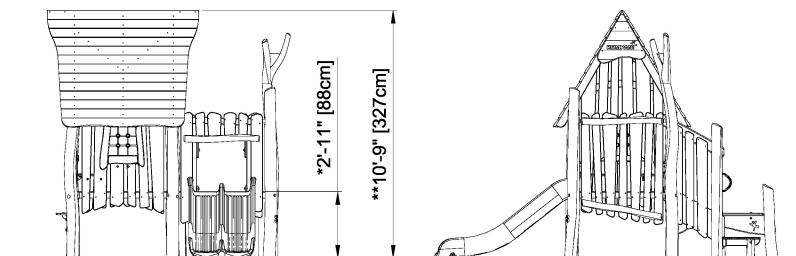
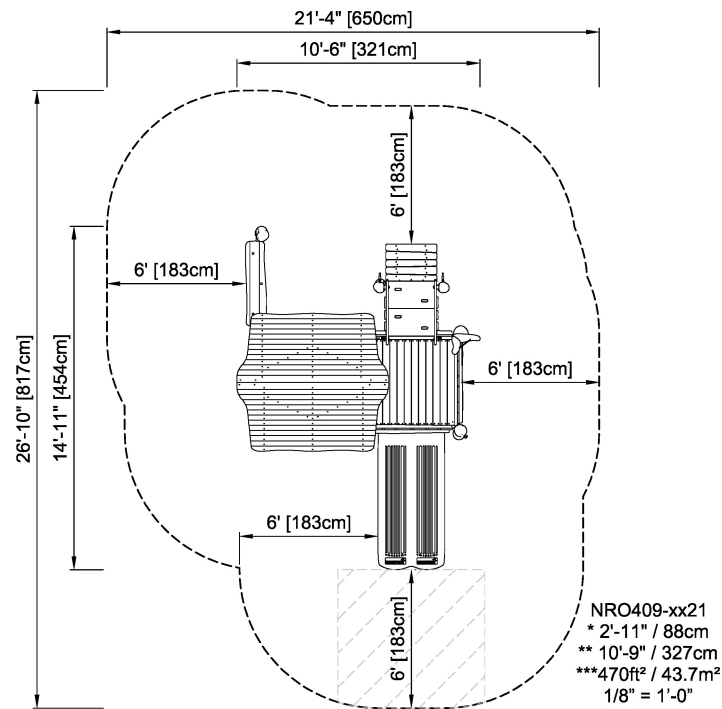
Product Line	Organic Robinia
Category	Playhouses
Age from	2 - 5
Max. fall height (CM)	100
Total height (CM)	327
Safety Zone	34.6 m2



IN-GROU.



ASTM



NRO409
1:100

* = Highest designated play surface.
** = Total height of product.

Weight/heaviest parts	kg.	Installation (Manpower)	Persons
Concrete required	NaN m3	Installation (Hours)	Hours
Foundation amount/footing	NaN	Excavation	NaN m3



Highest designated play surface and space required are according to ASTM F1487. Equipment must be installed over resilient surfacing appropriate to the safety guidelines in your area. Product development is an ongoing process. We reserve the right to make modifications on all our products. This product may not be mirrored, scaled or altered in any way. Safety zones must be retained for proper placement of equipment. If any changes are required, please contact your KOMPAN representative at 1.800.426.9788.

NRO912

Double Swing Combination with Bird's Nest



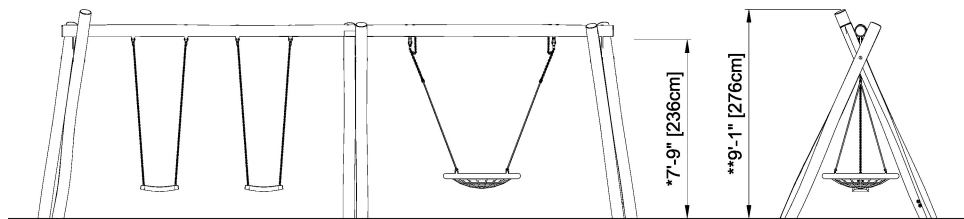
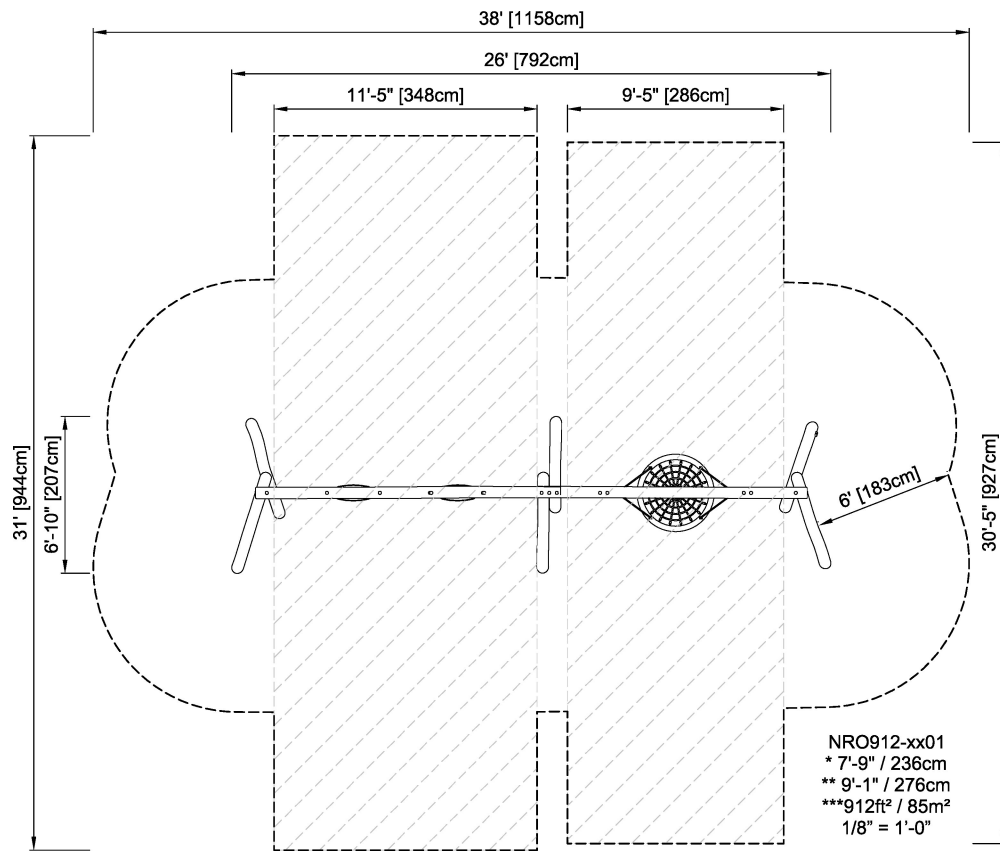
Elevated Activities: 0	Accessible Elevated Activities	Accessible Ground Level Activities	Accessible Ground Level Play Types
Present	0	1	1
Required	0	1	1

Product is available as FSC® Certified (FSC® C004450) robinia wood on request.

Product Line	Organic Robinia
Category	Traditional play, Sand and water play
Age from	5 - 12
Max. fall height (CM)	7
Total height (CM)	9
Safety Zone	912 m2



WOOD ASTM



NRO912
1:100

* = Highest designated play surface.
** = Total height of product.

Weight/heaviest parts	kg.	Installation (Manpower)	Persons
Concrete required	NaN m3	Installation (Hours)	Hours
Foundation amount/footing	NaN	Excavation	NaN m3

Double tower with spider net and bridge ADA



Elevated Activities: 5	Accessible Elevated Activities	Accessible Ground Level Activities	Accessible Ground Level Play Types
Present	3	1	1
Required	3	2	2

The voluminous Double Tower with Spider Net is an irresistible play attraction for children. With its varied play corners and diverse physical play activities it attracts children again and again, for a long time. The spider web net trains the children's cross-coordination, balance and spatial awareness with its inclined net rungs. All these motor skills are crucial when e.g. managing traffic safely. The balance beam and fireman's pole both appeal to dare-devils with their stomach-tickling height and speed. These play events train the balance and sense of space. Furthermore, the fireman's pole activity, jumping down, train children's bone density. This is particularly important as children grow muscle mass for life primarily in the early years. The accessible stairway leads users with a range of abilities up to the slide. Going down, users are lopped back to the stair entrance, which is also a meeting place.

Product Line	Organic Robinia
Category	Multi play structures
Age from	5 - 12
Max. fall height (CM)	209
Total height (CM)	417
Safety Zone	68 m2



ASTM

Weight/heaviest parts	kg.	Installation (Manpower)	Persons
Concrete required	NaN m3	Installation (Hours)	Hours
Foundation amount/footing	NaN	Excavation	NaN m3

PARK IMPROVEMENT PLANS WALNUT GLEN PARK

860 WALNUT STREET
 GLEN ELLYN, IL 60137

PROJECT TEAM

LANDSCAPE ARCHITECT
 KIMLEY-HORN AND ASSOCIATES, INC.
 1001 WARRENVILLE RD, SUITE 350
 LISLE, IL 60532
 TEL: (630) 487-5550
 EMAIL: KEITH.DEMCHINSKI@KIMLEY-HORN.COM
 CONTACT: KEITH DEMCHINSKI, P.L.A.

SURVEYOR
 COMPASS SURVEYING
 2631 GINGER WOODS PKWY SUITE 100
 AURORA, IL 60502
 TEL: (630) 820-9100
 CONTACT: SCOTT KREBS

UTILITY AND GOVERNING AGENCY CONTACTS

VILLAGE ENGINEERING
 VILLAGE OF GLEN ELLYN
 535 DUANE STREET
 GLEN ELLYN, IL 60137
 TEL: (630) 547-5250
 CONTACT: RAYMOND ULREICH, P.E., P.L.S.

POWER COMPANY
 COMMONWEALTH EDISON COMPANY
 THREE LINCOLN CENTRE, 4TH FLOOR
 OAKBROOK TERRACE, IL 60181
 TEL: (630) 437-2397
 CONTACT: DERRICK ROCHELLE

SANITARY SEWER SERVICE
 VILLAGE OF GLEN ELLYN PUBLIC WORKS
 30 SOUTH LAMBERT ROAD
 GLEN ELLYN, IL 60137
 TEL: (630) 547-5507
 CONTACT: RICH DAUBERT, P.E.

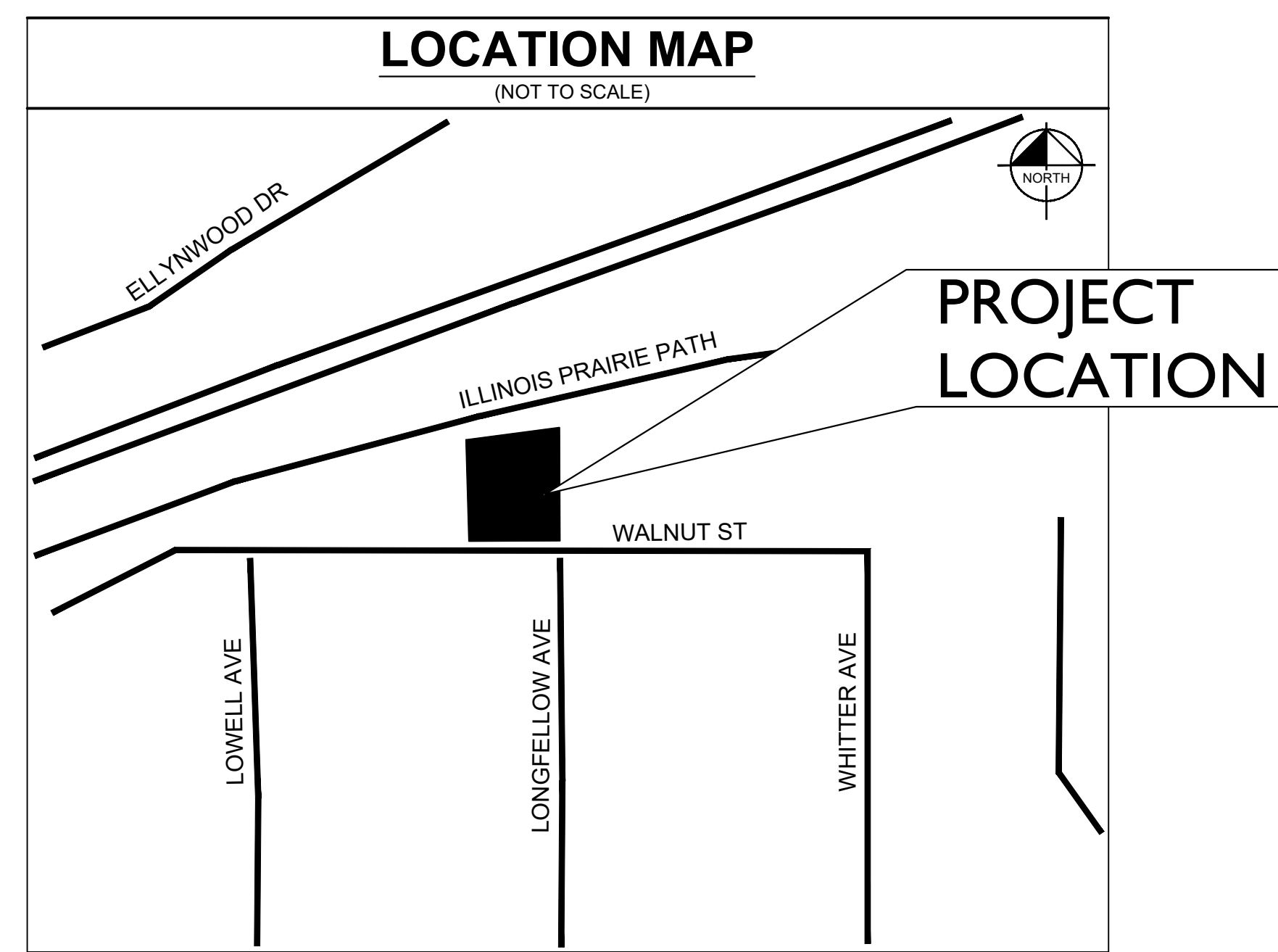
NATURAL GAS COMPANY
 NICOR GAS
 90 FINLEY RD.
 LOMBARD, IL 60148
 TEL: (630) 388-2362

STORM SEWER SERVICE
 VILLAGE OF GLEN ELLYN PUBLIC WORKS
 30 SOUTH LAMBERT ROAD
 GLEN ELLYN, IL 60137
 TEL: (630) 547-5507
 CONTACT: RICH DAUBERT, P.E.

TELEPHONE
 AT&T (DISTRIBUTION)
 TEL: (630) 573-5450

WATER SERVICE
 DUPAGE COUNTY PUBLIC WORKS
 TEL: (630) 962-4692
 CONTACT: KEN NILES

DUPAGE COUNTY DOT
 421 NORTH COUNTY FARM RD
 WHEATON, IL 60187
 TEL: (630) 407-6881
 CONTACT: MIKE WISNIEWSKI



Sheet List Table	
SHEET NUMBER	SHEET TITLE
L0.0	COVER SHEET
L1.0	DEMOLITION PLAN
L2.0	GRADING PLAN
L3.0	SITE AND LAYOUT PLAN
L4.0	CONSTRUCTION DETAILS
L5.0	LANDSCAPE PLAN
L6.0	LANDSCAPE DETAILS
1 OF 1	TOPOGRAPHIC SURVEY

BENCHMARKS

SITE BENCHMARKS:
 (LOCATIONS SHOWN ON SURVEY)

ARROW BOLT ON FIRE HYDRANT AT THE SOUTHWEST CORNER OF WALNUT ST. AND LONGFELLOW AVE.
ELEVATION=708.21

MINI RAILROAD SPIKE IN SOUTH FACE OF UTILITY POLE AT THE NORTHWEST CORNER OF SITE
ELEVATION=721.85

DUPAGE COUNTY BENCHMARKS:

MONUMENT DK3188, LOCATED AT THE NORTHEAST CORNER OF THE INTERSECTION OF MAIN ST. AND THE RAILROAD, SOUTH OF CRESCENT ST.
ELEVATION=745.28 (NAVD 88)

MONUMNET DK3187, LOCATED AT THE NORTHEAST CORNER OF THE "T" INTERSECTION OF WALNUT ST. AND TAYLOR AVE.
ELEVATION=731.07 (NAVD 88)

NO.	REVISIONS	DATE	BY
1	ADDENDUM 2	09/25/19	CALW

Kimley»Horn
 © 2019 KIMLEY-HORN AND ASSOCIATES, INC.
 1001 WARRENVILLE ROAD, SUITE 350
 LISLE, IL 60532
 PHONE: (630) 487-5550
 WWW.KIMLEY-HORN.COM

SCALE: AS NOTED
 DESIGNED BY: CALW
 DRAWN BY: CALW
 CHECKED BY: KED



COVER SHEET

WALNUT GLEN PARK
 860 WALNUT STREET
 GLEN ELLYN, IL 60137

ORIGINAL ISSUE:
 09/18/2019
 KHA PROJECT NO.
 168462007

SHEET NUMBER
L0.0

Drawing name: K:\CHS_DEVELOPMENT\winuigen-glenlyn-A2_Design\CAD\plan\sheet\00 - COVER SHEET.dwg L0.0 COVER SHEET - Sep 25, 2019 1:19pm by: Chris Wilson
 This document, together with the concepts and designs presented herein, is intended only for the specific purpose and client for which it was prepared. Reuse of and improper reliance on this document without written authorization and adaptation by Kimley-Horn and Associates, Inc. shall be without liability to Kimley-Horn and Associates, Inc.

Drawing name: K:\CHS_LIVE\16842007_walnutglen-glenyn-A2_Design\CAD\plan\sheet\12.0 - GRADING PLAN.dwg Sep 25, 2019 1:12pm by: Chris Wilson
 This document, together with the concepts and designs presented herein, is intended only for the specific purpose and client for which it was prepared. Reuse of and improper reliance on this document without written authorization and adaptation by Kimley-Horn and Associates, Inc. shall be without liability to Kimley-Horn and Associates, Inc.

GRADING LEGEND

- XXX— PROPOSED CONTOUR
- - - - - EXISTING CONTOUR

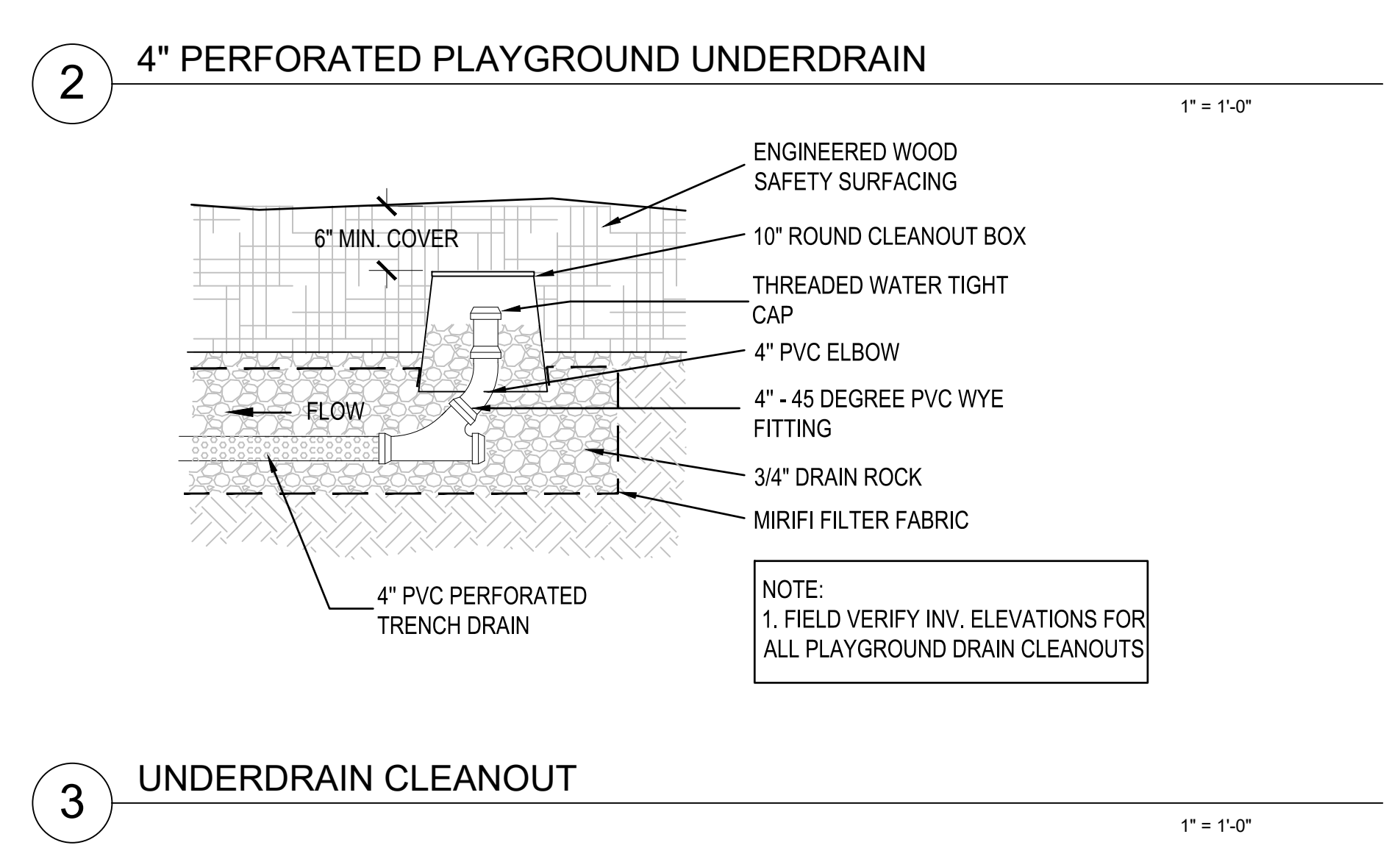
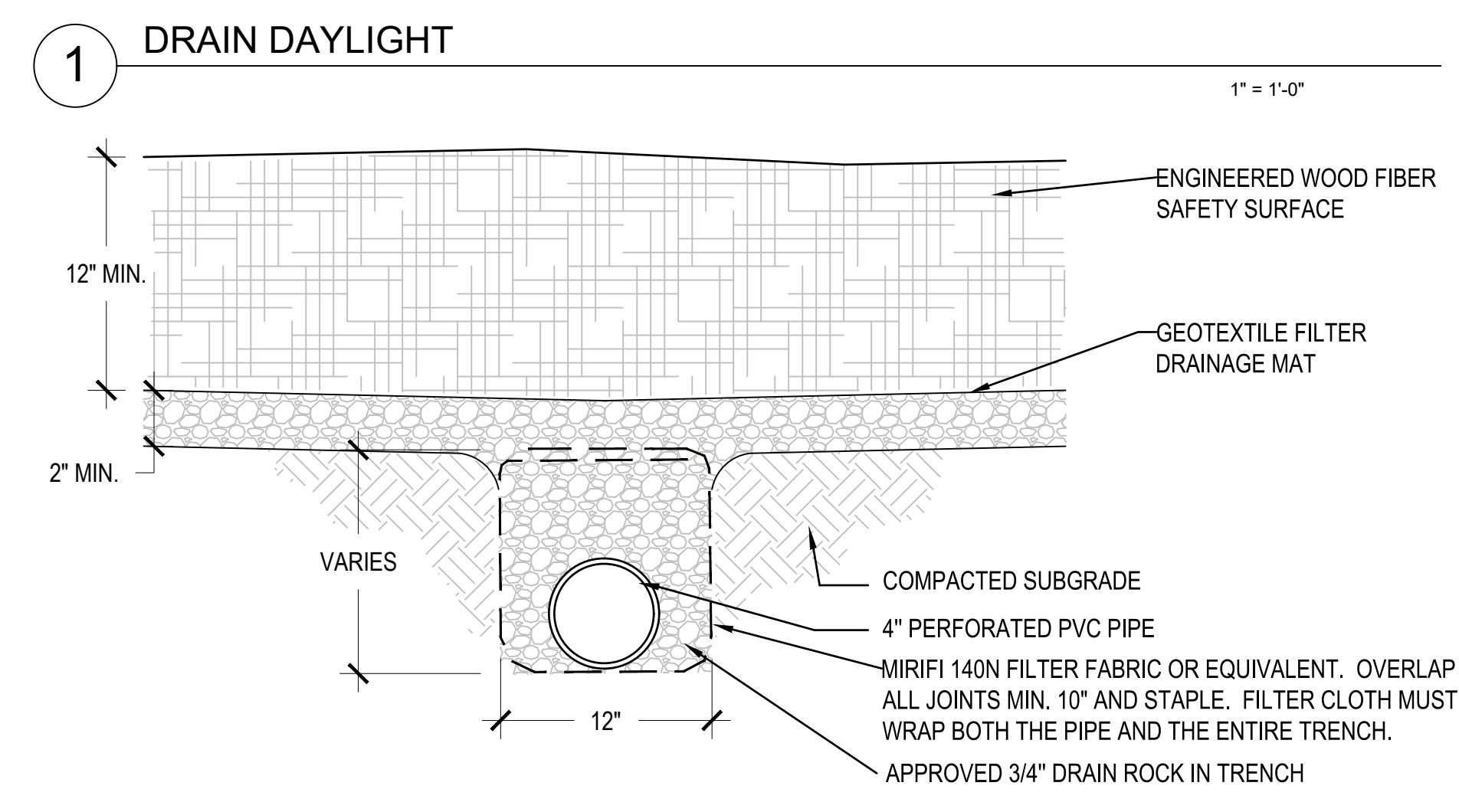
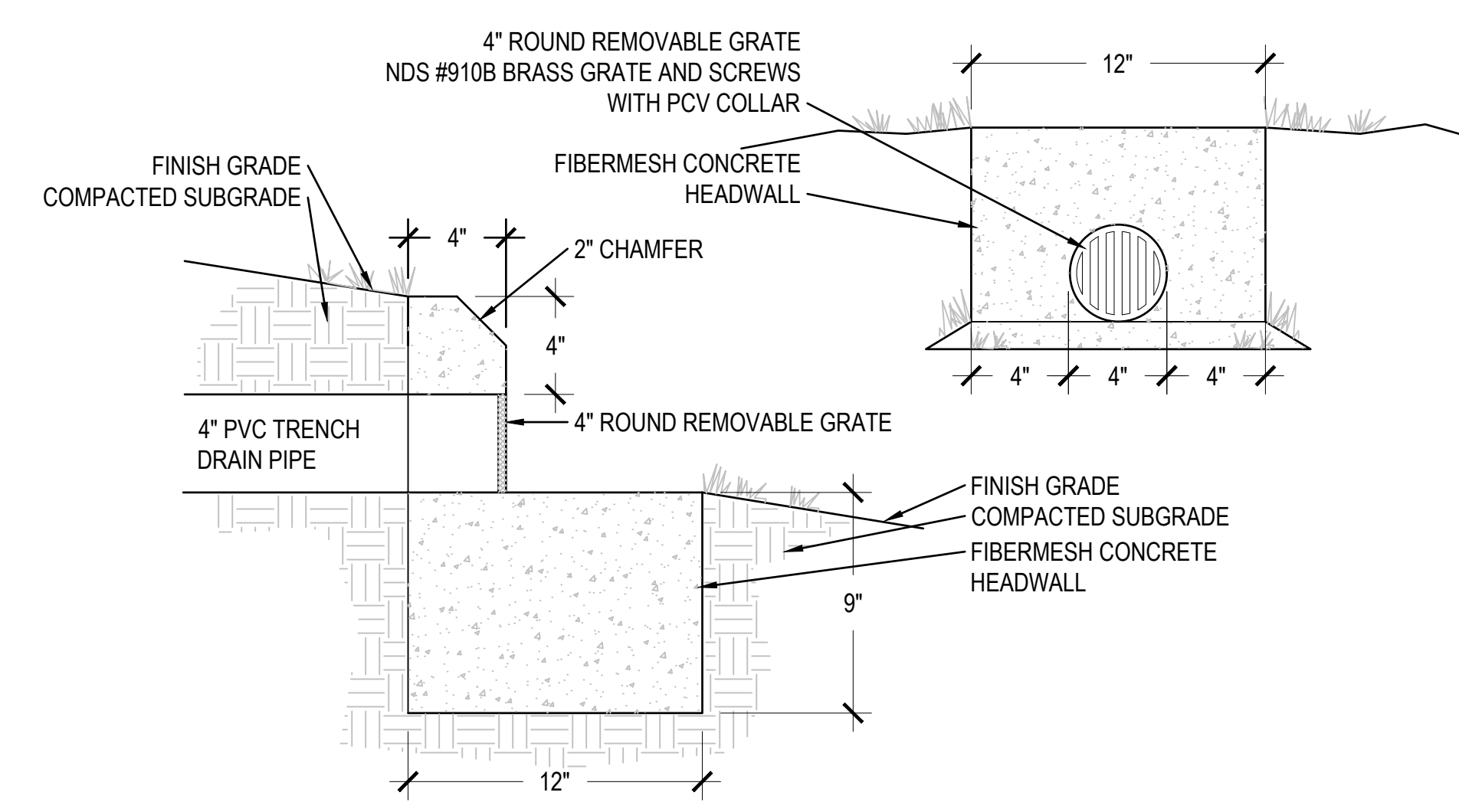
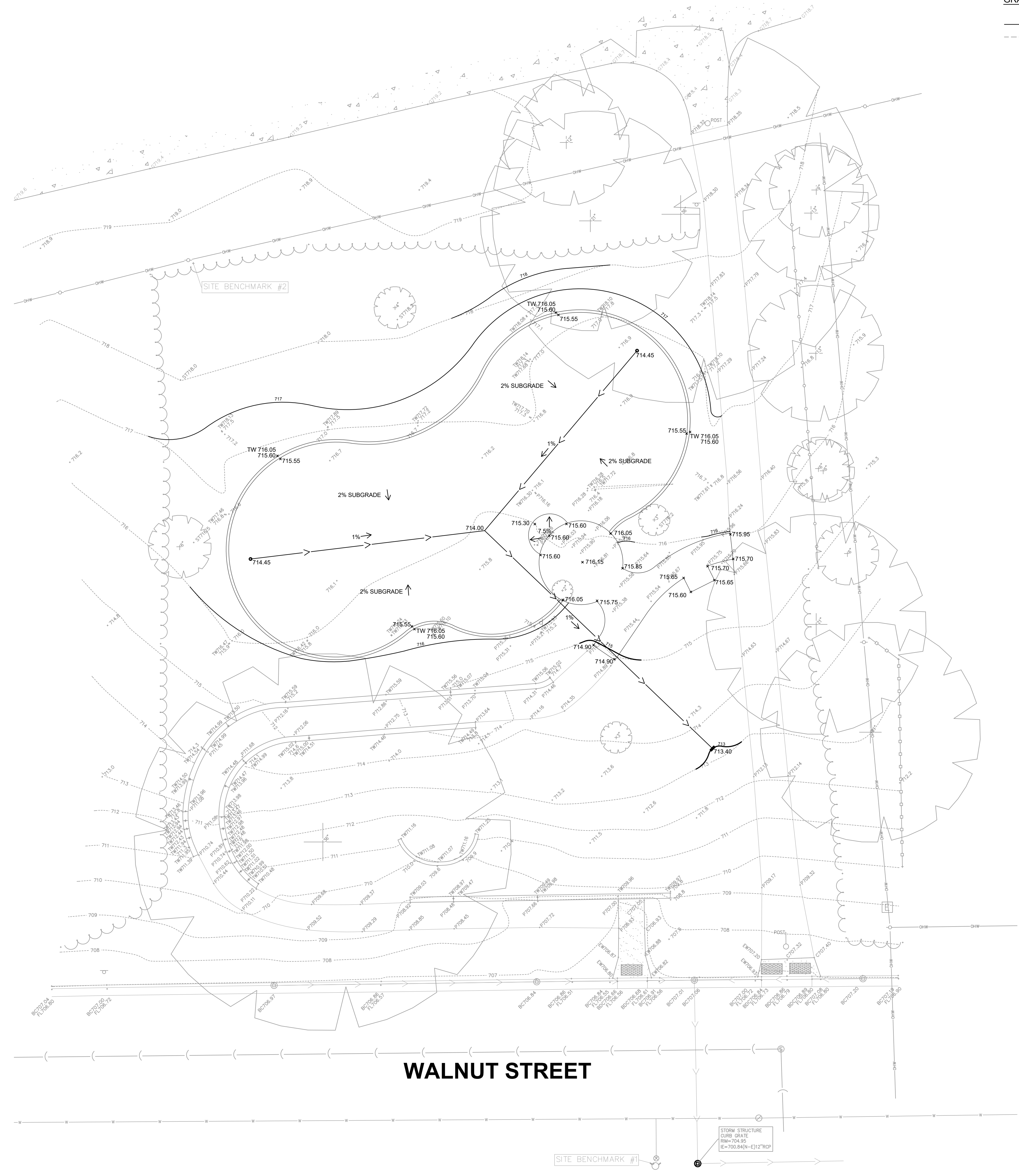
GRADING NOTES

1. CONTRACTOR TO VERIFY ALL EXISTING TOPOGRAPHY AND STRUCTURES ON THE SITE AND IMMEDIATELY NOTIFY THE LANDSCAPE ARCHITECT OF ANY DISCREPANCIES PRIOR TO STARTING WORK.
2. ALL ELEVATIONS SHOWN DEPICT FINISHED GRADE UNLESS OTHERWISE NOTED. GENERAL CONTRACTOR TO COORDINATE WITH EXCAVATION, LANDSCAPE AND PAVING SUBCONTRACTORS REGARDING TOPSOIL THICKNESS FOR LANDSCAPE AREAS AND PAVEMENT SECTION THICKNESS FOR PAVED AREAS TO PROPERLY ENSURE ADEQUATE CUT TO ESTABLISH SUBGRADE ELEVATIONS.
3. NO EARTHEN SLOPE SHALL BE GREATER THAN 3:1, UNLESS OTHERWISE NOTED.
4. MAXIMUM RUNNING SLOPE SHALL NOT EXCEED 5% AND CROSS SLOPE SHALL NOT EXCEED 2% ON ALL SIDEWALKS AND ACCESSIBLE ROUTES.
5. MATCH EXISTING ELEVATIONS AT THE PROPERTY LIMITS OR WHERE NOTED.
6. CONTRACTOR TO CLEAN EXISTING STORMWATER UTILITIES PRIOR TO CONSTRUCTION AND ENSURE THAT EXISTING INFRASTRUCTURE WORKS IN ACCORDANCE WITH THE PROPOSED DESIGN.
7. ALL AREAS TO HAVE POSITIVE DRAINAGE AWAY FROM PAVED SURFACES, OR TO DRAINAGE INLETS AS NOTED.

Call Before You Dig
1-800-892-0123

 GRAPHIC SCALE IN FEET
 0 5 10 20

	DATE: 09/25/19 CALW BY: CALW
	REVISIONS: ADDENDUM 2



Kimley»Horn
 © 2019 KIMLEY-HORN AND ASSOCIATES, INC.
 1001 WARRENVILLE ROAD, SUITE 350,
 WARRENVILLE, IL 60157
 PHONE: 630-467-5550
 WWW.KIMLEY-HORN.COM

SCALE: AS NOTED
 DESIGNED BY: CALW
 DRAWN BY: CALW
 CHECKED BY: KED



GRADING PLAN

WALNUT GLEN PARK
 860 WALNUT STREET
 GLEN ELLYN, IL 60137

ORIGINAL ISSUE:
 09/18/2019
 KHA PROJECT NO.
 168462007

SHEET NUMBER
L2.0

Drawing name: K:\CHS_DEV\16842007_walnutglen-glenlyn-A2_Design\CAD\plan\sheet\3.0 - SITE PLAN.dwg Sep 25, 2019 1:12pm by: Chris Wilson
 This document, together with the concepts and designs presented herein, is intended only for the specific purpose and client for which it was prepared. Plans of and improver reliance on this document without written authorization and adaptation by Kimley-Horn and Associates, Inc. shall be without liability to Kimley-Horn and Associates, Inc.

Call Before You Dig
1-800-892-0123

 NORTH
 GRAPHIC SCALE IN FEET
 0 5 10 20

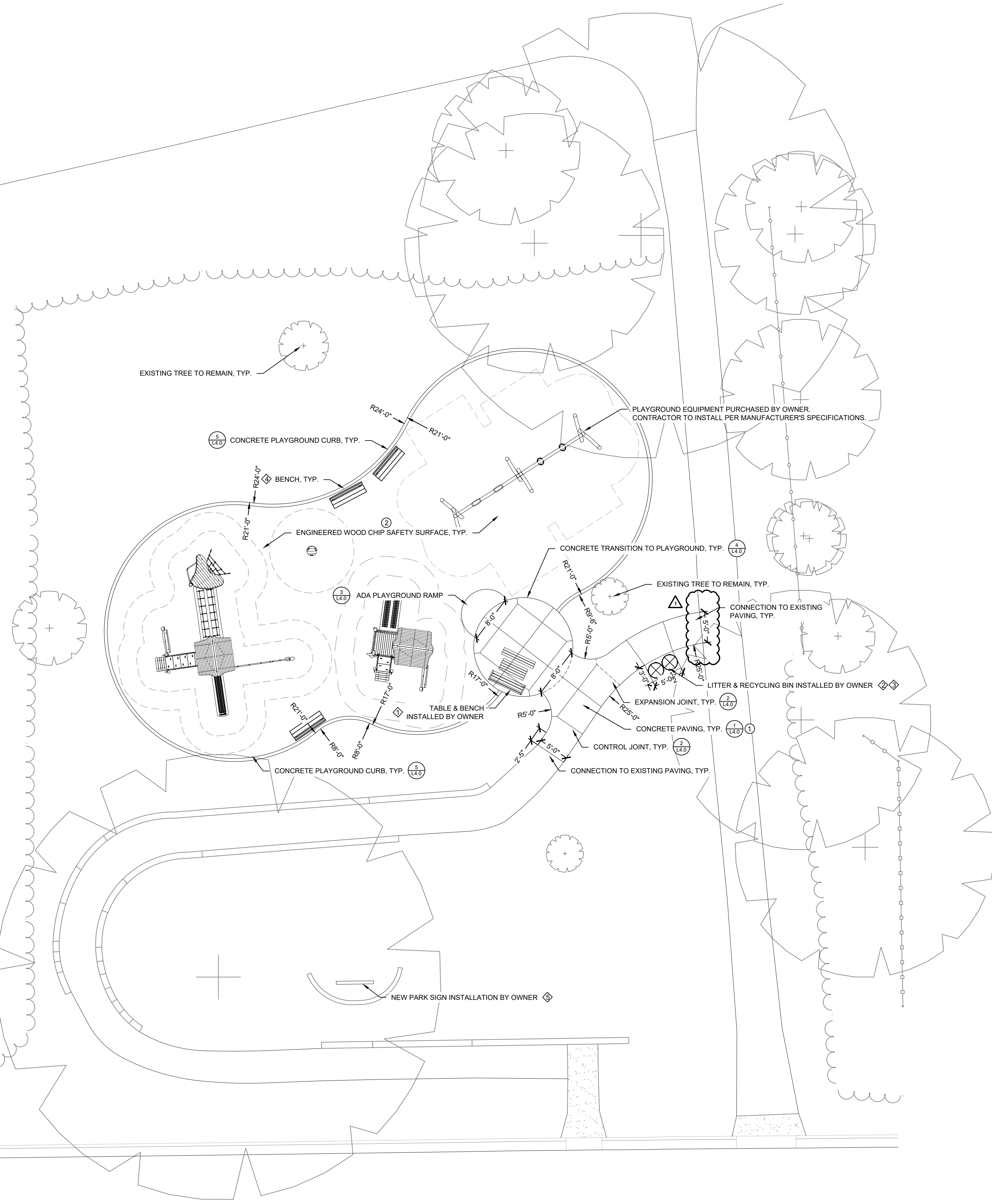
Site Furnishings Schedule

ITEM	DESCRIPTION	QUANTITY	MANUFACTURER	CONTACT	MODEL	COLOR
1	TABLE & BENCH	1	INSTALL BY OWNER	-	MODEL BY OWNER	-
2	LITTER BIN	1	INSTALL BY OWNER	-	MODEL BY OWNER	-
3	RECYCLING BIN	1	INSTALL BY OWNER	-	MODEL BY OWNER	-
4	BENCH	3	BY OWNER INSTALL BY CONTRACTOR	-	CONCRETE FOOTING AND MOUNTING VARIES BY BENCH.	-
5	PARK SIGN	1	INSTALL BY OWNER	-	MODEL BY OWNER	-

Materials List

	DESCRIPTION	DISTRIBUTOR	CONTACT	ITEM	FINISH
1	CONCRETE PAVING	-	-	-	PCC MEDIUM BROOM FINISH
2	ENGINEERED WOOD CHIP SAFETY SURFACE	-	-	ADA SURFACE STANDARD	NATURAL

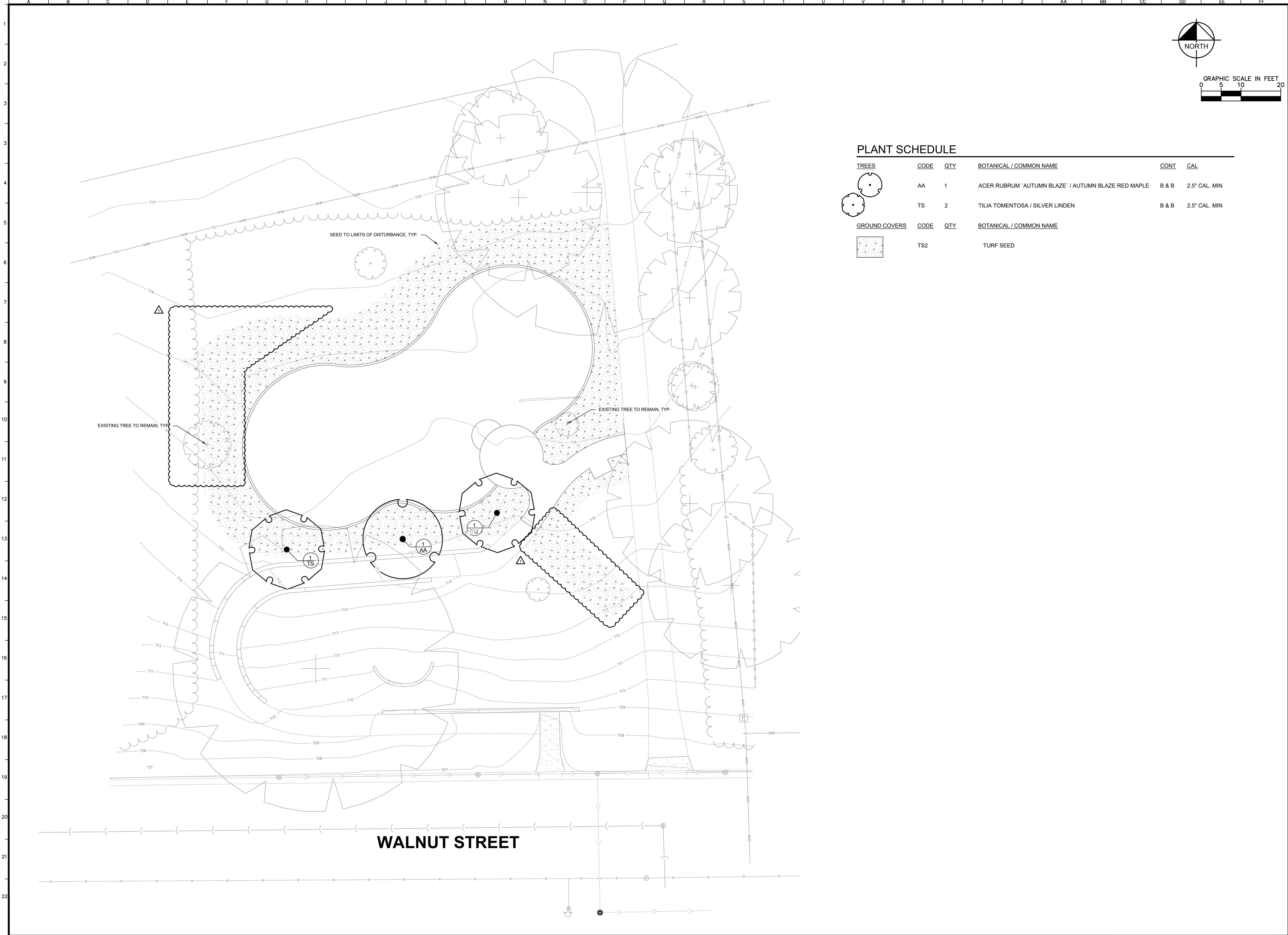
NOTE:
 - FINAL SITE AMENITY LOCATIONS TO BE CHECKED AND APPROVED IN THE FIELD BY LANDSCAPE ARCHITECT AND/OR OWNERS REPRESENTATIVE PRIOR TO INSTALLATION.
 - ALL MATERIALS AND SITE FURNISHINGS SHALL BE SUBMITTED FOR APPROVAL PRIOR TO INSTALLATION.



WALNUT STREET

No.	DATE	BY	REVISIONS	ADDENDUM 2	09/25/19	CALW
 © 2019 KIMLEY-HORN AND ASSOCIATES, INC. 1001 WARRENVILLE ROAD, SUITE 350 WARRENVILLE, IL 60157 PHONE: 630-467-5550 WWW.KIMLEY-HORN.COM						
SCALE:	AS NOTED	DESIGNED BY: CALW	DRAWN BY: CALW	CHECKED BY: KED		
 GLEN ELLYN PARK DISTRICT						
SITE AND LAYOUT PLAN						
WALNUT GLEN PARK 860 WALNUT STREET GLEN ELLYN, IL 60137						
ORIGINAL ISSUE: 09/18/2019 KHA PROJECT NO. 16842007 SHEET NUMBER L3.0						

Drawing Name: K:\CHS_DEV\16842007_walnutglen_glenlyn_A2_Design\CAD\plan\sheet\15.0 - LANDSCAPE PLAN.dwg L5.0 LANDSCAPE PLAN Sep 25, 2019 1:22pm by Chris Wilson
 This document, together with the concepts and designs presented herein, is intended only for the specific purpose and client for which it was prepared. Reuse of and improper reliance on this document without written authorization and adaptation by Kimley-Horn and Associates, Inc. shall be without liability to Kimley-Horn and Associates, Inc.



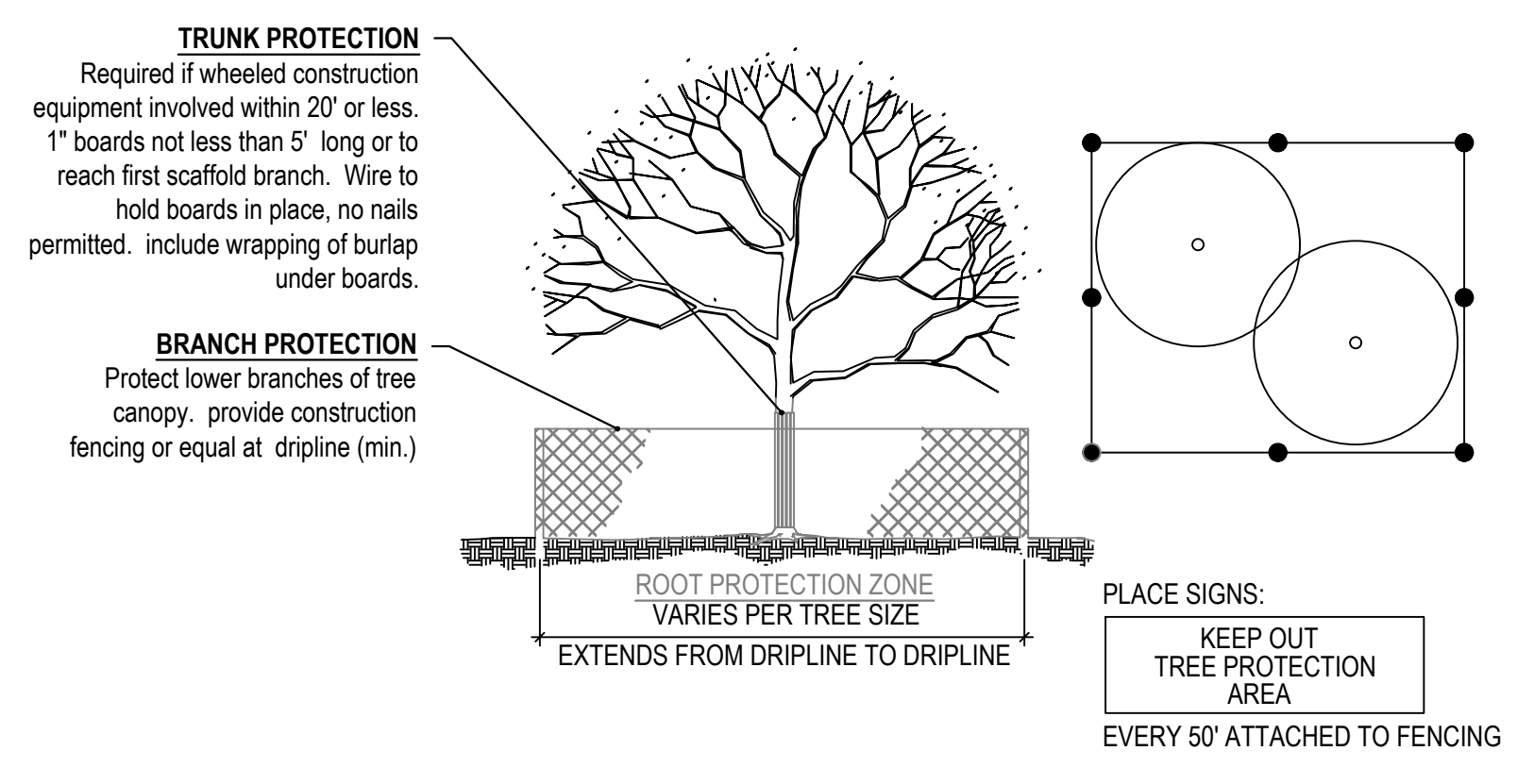
PLANT SCHEDULE

TREES	CODE	QTY	BOTANICAL / COMMON NAME	CONT	CAL
	AA	1	ACER RUBRUM 'AUTUMN BLAZE' / AUTUMN BLAZE RED MAPLE	B & B	2.5" CAL. MIN
	TS	2	TILIA TOMENTOSA / SILVER LINDEN	B & B	2.5" CAL. MIN

GROUND COVERS	CODE	QTY	BOTANICAL / COMMON NAME
	TS2		TURF SEED

						09/25/19	CALW
						DATE	BY
						ADDENDUM 2	REVISIONS
							No.
<p>© 2019 KIMLEY-HORN AND ASSOCIATES, INC. 1001 WARRENVILLE ROAD, SUITE 350 WARRENVILLE, IL 60157 PHONE: 630-487-5550 WWW.KIMLEY-HORN.COM</p>							
SCALE: AS NOTED DESIGNED BY: CALW DRAWN BY: CALW CHECKED BY: KED							
<p>GLEN ELLYN PARK DISTRICT</p>							
<p>LANDSCAPE PLAN</p>							
<p>WALNUT GLEN PARK</p> <p>880 WALNUT STREET GLEN ELLYN, IL 60137</p>							
ORIGINAL ISSUE: 09/18/2019 KHA PROJECT NO. 16842007 SHEET NUMBER <p style="font-size: 24pt; font-weight: bold;">L5.0</p>							

Drawing name: K:\CHS_DESIGN\16842007_walnutglen_glenlyn\A2_Design\CAD\glenlyn\A2_LANDSCAPE PLAN.dwg L6.0 LANDSCAPE DETAILS Sep 25, 2019 1:12pm by Chris Wilson
 This document, together with the concepts and designs presented herein, is intended only for the specific purpose and client for which it was prepared. Reuse of and improper reliance on this document without written authorization and adaptation by Kimley-Horn and Associates, Inc. shall be without liability to Kimley-Horn and Associates, Inc.



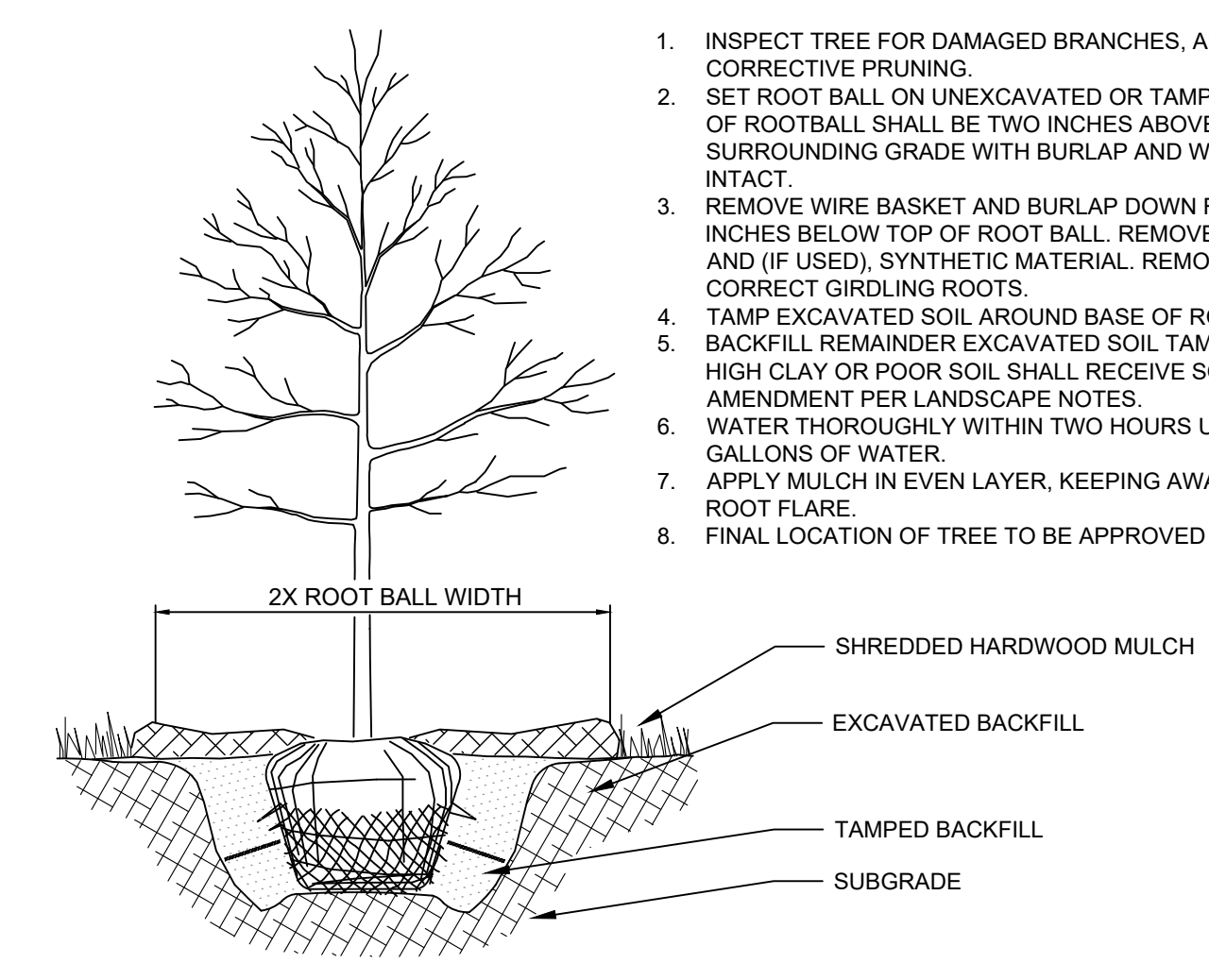
- TREE PROTECTION NOTES**
- ALL TREES TO BE PROTECTED AND PRESERVED SHALL BE PER DETAIL. GROUPING OF MORE THAN ONE TREE MAY OCCUR.
 - TREES TO BE PROTECTED AND PRESERVED SHALL BE IDENTIFIED ON THE TRUNK WITH WHITE SURVEY TAPE.
 - TO PREVENT ROOT SMOTHERING, SOIL STOCKPILES, SUPPLIES, EQUIPMENT OR ANY OTHER MATERIAL SHALL NOT BE PLACED OR STORED WITHIN THE DRIP LINE OR WITHIN 15 FEET OF A TREE TRUNK, WHICHEVER IS GREATER.
 - TREE ROOTS SHALL NOT BE CUT UNLESS CUTTING IS UNAVOIDABLE.
 - WHEN ROOT CUTTING IS UNAVOIDABLE, A CLEAN SHARP CUT SHALL BE MADE TO AVOID SHREDDING OR SMASHING. ROOT CUTS SHOULD BE MADE BACK TO A LATERAL ROOT. WHENEVER POSSIBLE, ROOTS SHOULD BE CUT BETWEEN LATE FALL AND BUD OPENING, WHEN ROOT ENERGY SUPPLIES ARE HIGH AND CONDITIONS ARE LEAST FAVORABLE FOR DISEASE CAUSING AGENTS. EXPOSED ROOTS SHALL BE COVERED IMMEDIATELY TO PREVENT DEHYDRATION. ROOTS SHALL BE COVERED WITH SOIL OR BURLAP AND KEPT MOIST.
 - WATERING OF PROTECTED TREES IN WHICH ROOTS WERE CUT SHALL BE PROVIDED BY THE CONTRACTOR.
 - AUGER TUNNELING RATHER THAN TRENCHING SHOULD BE USED FOR UTILITY PLACEMENT WITHIN DRIP LINE.
 - FENCING MATERIAL SHALL ENCIRCLE ANY TREE OR SHRUB WHOSE OUTER DRIP LINE EDGE IS WITHIN 20 FEET OF ANY CONSTRUCTION ACTIVITIES.
 - FENCING MATERIAL SHALL BE BRIGHT, CONTRASTING COLOR, DURABLE, AND A MINIMUM OF FOUR FEET IN HEIGHT.
 - FENCING MATERIAL SHALL BE SET AT THE DRIP LINE OR 15 FEET FROM TREE TRUNK, WHICHEVER IS GREATER, AND MAINTAINED IN AN UPRIGHT POSITION THROUGHOUT THE DURATION OF CONSTRUCTION ACTIVITIES.
 - ANY GRADE CHANGES (SUCH AS THE REMOVAL OF TOPSOIL OR ADDITION OF FILL MATERIAL) WITHIN THE DRIP LINE SHOULD BE AVOIDED FOR EXISTING TREES TO REMAIN. RETAINING WALLS AND TREE WELLS ARE ACCEPTABLE ONLY WHEN CONSTRUCTED PRIOR TO GRADE CHANGE.
 - REFER TO PLANS FOR FENCE STAKING LOCATIONS.

1 TREE PROTECTION NTS

LANDSCAPE NOTES

- THE LANDSCAPE CONTRACTOR SHALL BE RESPONSIBLE FOR INSTALLING MATERIALS AND PLANTS SHOWN ON THE LANDSCAPE PLAN. THE CONTRACTOR IS RESPONSIBLE FOR THE COST TO REPAIR UTILITIES, ADJACENT LANDSCAPE, PUBLIC AND PRIVATE PROPERTY THAT IS DAMAGED BY THE CONTRACTOR OR THEIR SUBCONTRACTOR'S OPERATIONS DURING INSTALLATION OR DURING THE SPECIFIED MAINTENANCE PERIOD. CALL FOR UTILITY LOCATIONS PRIOR TO ANY EXCAVATION.
- THE CONTRACTOR SHALL REPORT ANY DISCREPANCY IN PLAN VS. FIELD CONDITIONS IMMEDIATELY TO THE LANDSCAPE ARCHITECT, PRIOR TO CONTINUING WITH THAT PORTION OF WORK.
- THE CONTRACTOR SHALL BE RESPONSIBLE FOR THE REPAIR OF ANY OF THEIR TRENCHES OR EXCAVATIONS THAT SETTLE.
- ALL NURSERY STOCK SHALL BE WELL BRANCHED, HEALTHY, FULL, PRE-INOCULATED AND FERTILIZED. DECIDUOUS TREES SHALL BE FREE OF FRESH SCARS. TRUNKS WILL BE WRAPPED IF NECESSARY TO PREVENT SUN SCALD AND INSECT DAMAGE. THE LANDSCAPE CONTRACTOR SHALL REMOVE THE WRAP AT THE PROPER TIME AS A PART OF THIS CONTRACT.
- ALL NURSERY STOCK SHALL BE GUARANTEED, BY THE CONTRACTOR, FOR ONE YEAR FROM DATE OF FINAL INSPECTION.
- AMENDED SOIL SHALL BE PROVIDED AND GRADED BY THE GENERAL CONTRACTOR UP TO 6 INCHES BELOW FINISHED GRADE IN TURF AREAS AND 18 INCHES IN PLANTING AREAS.
- PLANTING AREA SOIL SHALL BE AMENDED WITH 25% SPHANGUM PEATMOSS, 5% HUMUS AND 65% PULVERIZED SOIL FOR ALL SHRUB, ORNAMENTAL GRASS, PERENNIAL AND ANNUAL BEDS. AMENDED TURF AREA SOIL SHALL BE STANDARD TOPSOIL.
- SEED/SOD LIMIT LINES ARE APPROXIMATE. CONTRACTOR SHALL SEED/SOD ALL AREAS WHICH ARE DISTURBED BY GRADING WITH THE SPECIFIED SEED/SOD MIXES.
- CONTRACTOR SHALL INSTALL SHREDDED HARDWOOD MULCH AT A 3" DEPTH TO ALL TREES, SHRUB, PERENNIAL, AND GROUND COVER AREAS. TREES PLACED IN AREA COVERED BY TURF SHALL RECEIVE A 4 FT WIDE MAXIMUM TREE RING WITH 3" DEPTH SHREDDED HARDWOOD MULCH. A SPADED BED EDGE SHALL SEPARATE MULCH BEDS FROM TURF OR SEEDED AREAS. A SPADED EDGE IS NOT REQUIRED ALONG CURBED EDGES.
- WEED FABRIC SHALL ONLY BE APPLIED UNDER DECORATIVE STONE APPLICATIONS.
- INSTALLATION OF TREES WITHIN PARKWAYS SHALL BE COORDINATED IN THE FIELD WITH LOCATIONS OF UNDERGROUND UTILITIES. TREES SHALL NOT BE LOCATED CLOSER THAN 5' FROM UNDERGROUND UTILITY LINES AND NO CLOSER THAN 10' FROM UTILITY STRUCTURES.
- DO NOT DISTURB THE EXISTING PAVING, LIGHTING, OR LANDSCAPING THAT EXISTS ADJACENT TO THE SITE UNLESS OTHERWISE NOTED ON PLAN.
- PLANT QUANTITIES SHOWN ARE FOR THE CONVENIENCE OF THE OWNER AND JURISDICTIONAL REVIEW AGENCIES. THE CONTRACTOR IS RESPONSIBLE FOR VERIFYING ALL PLANT QUANTITIES AS DRAWN.
- THE OWNER'S REPRESENTATIVE MAY REJECT ANY PLANT MATERIALS THAT ARE DISEASED, DEFORMED, OR OTHERWISE NOT EXHIBITING SUPERIOR QUALITY.
- THE CONTINUED MAINTENANCE OF ALL REQUIRED LANDSCAPING SHALL BE THE RESPONSIBILITY OF THE OWNER OF THE PROPERTY ON WHICH SAID MATERIALS ARE REQUIRED. ALL PLANT MATERIALS REQUIRED BY THIS SECTION SHALL BE MAINTAINED AS LIVING VEGETATION AND SHALL BE PROMPTLY REPLACED IF THE PLANT MATERIAL HAS DIED PRIOR TO FINAL ACCEPTANCE. PLANTING AREAS SHALL BE KEPT FREE OF TRASH, LITTER, AND WEEDS AT ALL TIMES.

2 LANDSCAPE NOTES NTS



- NOTES:**
- INSPECT TREE FOR DAMAGED BRANCHES, APPLY CORRECTIVE PRUNING.
 - SET ROOT BALL ON UNEXCAVATED OR TAMPED SOIL. TOP OF ROOTBALL SHALL BE TWO INCHES ABOVE SURROUNDING GRADE WITH BURLAP AND WIRE BASKET INTACT.
 - REMOVE WIRE BASKET AND BURLAP DOWN FOUR TO SIX INCHES BELOW TOP OF ROOT BALL. REMOVE ALL TWINE AND (IF USED), SYNTHETIC MATERIAL. REMOVE OR CORRECT GIRDLING ROOTS.
 - TAMP EXCAVATED SOIL AROUND BASE OF ROOTBALL.
 - BACKFILL REMAINDER EXCAVATED SOIL TAMPED LIGHTLY. HIGH CLAY OR POOR SOIL SHALL RECEIVE SOIL AMENDMENT PER LANDSCAPE NOTES.
 - WATER THOROUGHLY WITHIN TWO HOURS USING 10 TO 15 GALLONS OF WATER.
 - APPLY MULCH IN EVEN LAYER, KEEPING AWAY FROM ROOT FLARE.
 - FINAL LOCATION OF TREE TO BE APPROVED BY OWNER.

3 TREE PLANTING NTS

SCALE: AS NOTED	DESIGNED BY: CALW	DRAWN BY: CALW	CHECKED BY: KED
<p>© 2019 KIMLEY-HORN AND ASSOCIATES, INC. 1001 WARRENVILLE ROAD, SUITE 350, WARRENVILLE, IL 60157 PHONE: 630-467-5550 WWW.KIMLEY-HORN.COM</p>			
<p>GLEN ELLYN PARK DISTRICT</p>			
<p>LANDSCAPE DETAILS</p>			
<p>WALNUT GLEN PARK</p> <p>860 WALNUT STREET GLEN ELLYN, IL 60137</p>			
ORIGINAL ISSUE: 09/18/2019			
KHA PROJECT NO. 16842007			
SHEET NUMBER			
			ADDENDUM 2 REVISIONS DATE BY CALW 09/25/19

