

Ackerman ARTS AND CRAFTS TO GO

Join us for your favorite class from the comfort of your own home! Supplies can be picked up on Tuesdays and your child will have the opportunity to make the craft with other participants and an Ackerman staff member via Zoom on Wednesdays. A class link, along with detailed class information, will be emailed upon registering your child. Parent participation is suggested, and participants will have to provide their own coloring supplies: crayons, markers or colored pencils. The deadline to register is 5pm the Friday prior to pick-up. For ages 5-12.

\$8
per session

Winter Tote Bag & Snow Globe Wed, January 13 • 4pm

Material Pick-Up: 9am-5pm January 12

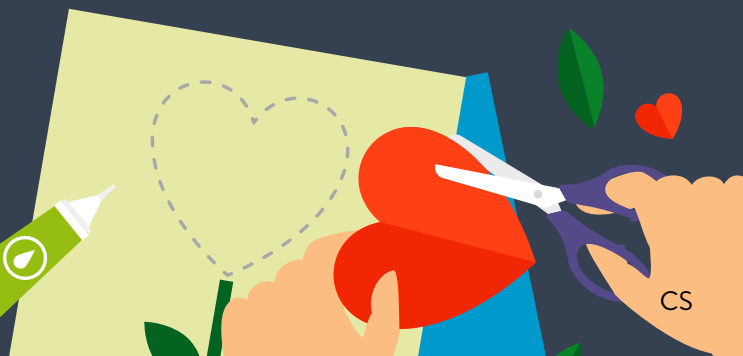
Animal Necklace & 3D Bead Art Wed, January 27 • 4pm

Material Pick-Up: 9am-5pm January 26

Mosaic Fish & Sand Art Butterfly Wed, January 20 • 4pm

Material Pick-Up: 9am-5pm January 19

REGISTER ONLINE »



The SARS CoV-2 antibody test will be performed on all successful donations

Glen Ellyn Community

Blood Drives

Thursday, Jan. 21

9:30am-3:30pm

[Book a time »](#)

Tuesday, Mar. 30

1pm-6pm

[Book a time »](#)

Thursday, Feb. 25

9:30am-3:30pm

[Book a time »](#)

Tuesday, Apr. 27

9:30am-3:30pm

[Book a time »](#)

Save up to 3 lives!

Reservations required. No walkups.





Drive-Thru Drop-Off Food Drives

Help fill the shelves at Glen Ellyn Food Pantry

DATES/TIMES

Thursday, Jan. 21
9:30am-3:30pm

Thursday, Feb. 25
9:30am-3:30pm

Tuesday, Mar. 30
1pm-6pm

LOCATION

Ackeramn SFC
800 St. Charles Rd.

COMMONLY NEEDED ITEMS

Peanut Butter	Sugar (1 or 2lb)	Mayonnaise
Jelly	Dried beans	Mac and cheese
White or brown rice	Canned beans	Dish soap
Pasta	Canned ravioli	Bar soap
Canned tuna	Spaghetti's	Diapers
Tomato sauce	Canned soup	Baby wipes
Tomato paste	Coffee (1lb cans)	Toilet paper
Canned vegetables	Coffee (instant)	Liquid detergent
Canned fruit	Black tea	Toothpaste
Applesauce	Green tea	Deodorant
Granola bars	Cold cereal	Shampoo
Cookies	Ketchup	
Flour	Mustard	
Cooking oil	Relish	

OFFERED IN
PARTNERSHIP WITH



State Representative
Terra Costa Howard



NEW

Virtual Personal Training

Want the accountability of a personal trainer but aren't ready to head back to the gym? 1-on-1 and Partner Virtual Personal Training is now available through Ackerman SFC.

Single sessions start at \$29, and everyone pays the member rate in January!

Email slim@gepark.org or call (630) 942-7275 to book.

Glen Ellyn Park District
Ackerman 
Sports & Fitness Center



SWEETHEART SURPRISE

Spread a little love in honor of Valentine's Day with a Sweetheart Surprise! Recipients will enjoy a goody bag of treats, sweets, and surprises delivered right to their door on Friday, February 12, between 9am-3pm.

Register any family member in your household... or send one to another Glen Ellyn Park District resident! You may send multiple Sweetheart Surprises. At registration, please complete the required questions for name, address, and messages you would like for each surprise to be delivered.



**Registration Deadline: February 8 or until full
Limited to Glen Ellyn Park District residents only.
Click here to register »**



New Instructional Dance Classes

Our professional instructors inspire creativity, teach core dance concepts, and give students a strong foundation in quality dance technique and vocabulary. Classes are held at Spring Avenue Recreation Center, 185 Spring Avenue. For shoe and attire suggestions, email Taylor at tstirmell@gepark.org or see the online class description. For information on safety protocols and participation guidelines due to COVID-19, please visit: gepark.org/coronavirus. Min/Max: 5/10.

Tiny Tot Dance

Your child will learn dance concepts and develop rhythm, coordination, and balance while moving and grooving to music and using creative props to inspire imagination. Parents/guardians are required to stay within the building for the duration of each class, no exceptions. Children must be able to attend class without a parent present.

Creative Movement

This class develops motor skills, balance, cognitive awareness, creativity, rhythm, musicality and self-esteem. Parents/guardians are required to stay within the building for the duration of each class, no exceptions. Children must be able to attend class without a parent present.

Pre-Ballet/Tap

This class is divided into two units: ballet and tap. Your child will be taught core concepts, age-appropriate technique, and vocabulary in these two genres of dance.

Click the code number or visit gepark.org/register to sign up

Code	Class	Day	Age	Dates	Time	# of Classes	R/NR
120827	Creative Movement	M	3-4	2/1-2/22	4:15-5pm	Four	\$40/\$60
120828	Pre-Ballet/Tap	M	4-5	2/1-2/22	5:05-5:50pm	Four	\$40/\$60
120829	Pre-Ballet/Tap	W	4-5	2/3-2/24	5-5:45pm	Four	\$40/\$60
120830	Tiny Tot	Sa	2.5-3	2/6-2/27	9:20-9:50am	Four	\$27/\$40
120824	Creative Movement	M	3-4	3/1-4/12	4:15-5pm	Six	\$60/\$90
120823	Pre-Ballet/Tap	M	4-5	3/1-4/12	5:05-5:50pm	Six	\$60/\$90
120822	Pre-Ballet/Tap	W	4-5	3/3-4/14	5-5:45pm	Six	\$60/\$90

GLEN ELLYN PARKS Sculpture Tour

Thanks to a very generous donation several years ago by local orthodontist Dr. John Murphy, we proudly display some beautiful bronze sculptures in our parks. Gather the household, spend time outside, and find them all!



Ackerman Park



Ackerman Park



Spring Avenue Rec. Center



Spring Avenue Rec. Center



Prairie Path Park



Ackerman Park



Maryknoll Park



Village Green Park



Maryknoll Park



Spring Avenue Rec. Center



**GLEN ELLYN
PARK DISTRICT**

#playglenellyn