

SUMMER 2022

playbook

Summer registration
begins Saturday,
June 4 *at* 9 am

IN THIS ISSUE:

Sunset Pool *p15*

Fireworks from the
Fishing Pier Raffle *p10*

Special
Events *p08*

And much more!



Your Community. Your Parks.
Your Decision. Vote on June 28.

Learn more about the Glen Ellyn
Park District referendum on page 4.

we're here to help!

Staff initials follow the program description for which they are responsible.

BT	Brad Thomas	bthomas@gepark.org
CG	Chris Gutmann	cgutmann@gepark.org
CB	Clint Babicz	cbabicz@gepark.org
CH	Christine Hartnett	chartnett@gepark.org
CS	Chad Shingler	cshingler@gepark.org
DM	David MacDonald	dmacdonald@gepark.org
JR	Jeannie Robinson	jrobinson@gepark.org
LB	Laurie Bellmar	lbellmar@gepark.org
MN	Mike Nishimura	mnishimura@gepark.org
RM	Ryan Miller	rmiller@gepark.org
SL	Stacey Lim	slim@gepark.org

Website gepark.org
Registration/General Questions (630) 858-2462
Refund Requests gepark.org/refund
Ackerman SFC Questions (630) 317-0130
Closure/Cancellation Hotline gepark.org/hotline

our mission

To foster diverse, community-based leisure opportunities, through a harmonious blend of quality recreation programs, facilities, and open space which will enhance the quality of life into the future.



glenellynparks

subscribe!

how to register

Summer Registration Start Dates

Residents: 9am Saturday, June 4

Nonresidents: 9am Saturday, June 11

Online

Click the code number in the digital guide or visit gepark.org/register. New users must create an account prior to registering online by clicking "Create an Account."

Drop Off Form or Register in Person

Spring Avenue Recreation Center • 185 Spring Avenue
Main Street Recreation Center • 501 Hill Avenue

Monday-Thursday: 8:30am-8pm

Friday: 8:30am-5pm

Saturday: 9am-12pm (12:30pm at Main Street)

Sunday: Closed

Closed July 4 and September 5

Mail/Fax

Mail: Glen Ellyn Park District, Registration, 185 Spring Avenue, Glen Ellyn, 60137

Fax: (630) 389-8527

Upcoming Playbooks

Mark your calendar for the digital release of these upcoming editions at gepark.org/playbook

AUTUMN 2022: August 23, 2022

WINTER 2023: November 29, 2022

BOARD of COMMISSIONERS

For the Board meeting schedule, visit: gepark.org/board-meetings



Alex Durham
President



Julia Nephew
Vice President



Kathy Cornell
Treasurer



Paul Bischoff Jr.



Ben Stortz



Michael Ward



Rob Weber

what's inside



Adult Interest39

Art, crochet, wine tasting, CPR, dance, tai chi, dog training, and more

Active Older Adults & Seniors ...44

Luncheons, bingo, clubs, and more

Adventure Time38

Dance66

Day Trips46

Directory02

Early Childhood Interest.....25

Events08

Community, registered, ages 21+, blood and food drives, Fireworks from the Fishing Pier Raffle, and running events

Fitness77

Ackerman SFC, Spring Avenue Fitness Center, personal training, sports training, nutrition coaching, and more

Gymnastics69

Holes & Knolls Mini Golf.....21

Maryknoll Splash Park21

Nature73

Nature Walking Club, birding, volunteer opportunities, and more

Park Information87

Platform Tennis.....83

Policies.....91

Preschool22

Referendum Information..... 04

Registration.....02

Rentals.....84

Scholarship Program86

Sports48

Early childhood, youth/teen, and adult classes and leagues

Spring Avenue Dog Park..... 43

Sunset Pool15

Season passes, 5-visit passes, daily admission, pool schedule, swim lessons and, aquatic programs and events

Youth & Teen Interest29

WDSRA.....90

new for summer

- Summer Break at the Lake
- Bags and Brews Tournament
- Summer Fun Night Camp
- Mad Science: Secret Agent Lab
- Crochet Classes
- Wine Tasting Games
- SARC Senior Art Club
- Nature Walking Club
- Parks for Pollinators BioBlitz
- And so much more!



See our Summer Camp Guide for camp offerings!



YOUR COMMUNITY. YOUR PARKS. YOUR DECISION.

Glen Ellyn Park District Referendum • Vote on June 28, 2022

On **Tuesday, June 28, 2022** you will have the opportunity to vote on the Glen Ellyn Park District bond referendum. If approved, the issuance of general obligation bonds in an amount not to exceed \$15.9 million would raise needed revenue to repair, improve and expand park facilities, upgrade four parks across the Park District and purchase additional land for parks. Project priorities were identified by Glen Ellyn community members from community

engagement in master planning and community-wide surveys. This informational packet provides details about the priorities in the Park District that the Glen Ellyn community identified, why Park District improvements and a parks bond are needed, what benefits the parks bond would provide, the total capital cost of projects and other questions. Also included is the referendum question that you will see on the ballot when you vote.



For more information about the referendum and project priorities, visit www.gepark.org/futureparks, call us at (630) 942-7255 or follow this QR code using your smart phone.

The referendum and what it supports

The Glen Ellyn Park District Board of Commissioners voted unanimously at its regularly scheduled public meeting in April 2022 to put to a public vote a bond referendum to raise needed revenue for park improvements. Proposed upgrades and renovations address priorities residents identified through community engagement in master planning for major parks improvements (2018-2021) and Park District-wide surveys in 2021 and early 2022.

How much is the request?

The Glen Ellyn Park District is requesting approval to issue bonds not to exceed \$15.9 million over 19 years to raise revenue needed to repair, improve and expand **Sunset Pool and Ackerman Sports & Fitness Center**, upgrade **four park properties** spread throughout the district and **purchase additional land** for the parks.

What projects will the referendum benefit?

Projects identified by the community as priorities include:

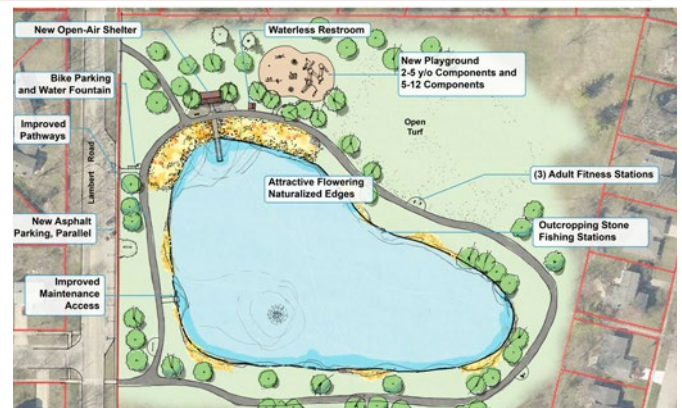
- Improve, equip and maintain **Sunset Pool**
- Expand, improve, equip and maintain **Ackerman Sports & Fitness Center**
- Improve, equip and maintain **Babcock Grove Park, Churchill Park, Lake Foxcroft Park, and the Lenox Road parcel**
- Make additional park and athletic improvements district wide
- Acquire land to expand parks in the future

Sunset Pool Improvements \$5.8 million



- New splash pad
- New water slide structure
- New zero-depth water feature
- New family changing areas
- Food service upgrades
- Additional shade structures
- Updated infrastructure and mechanicals

Lake Foxcroft Park Upgrades \$450,000



- New open-air shelter
- New waterless restroom
- Improved pathways
- Additional fishing stations
- New adult fitness stations
- New playground

Ackerman Sports & Fitness Center Additions \$6 million



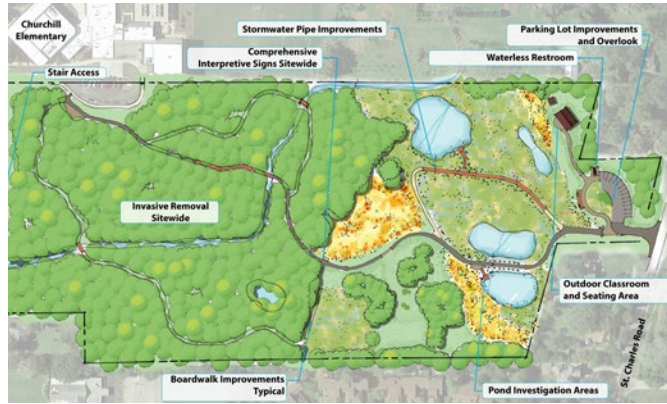
- New 6,000-square-foot gymnastics center
- New 2,100-square-foot multipurpose room
- Additional exercise space
- Improved customer service center
- New covered entryway

Babcock Grove Park Upgrades \$275,000



- New open-air shelter
- Improved green space and additional tree planting
- New playground

Churchill Park Upgrades \$475,000



- New outdoor education classroom
- New pond access
- New waterless restroom
- Improved trails and boardwalks
- Removal of invasive plant species
- Updated educational signage

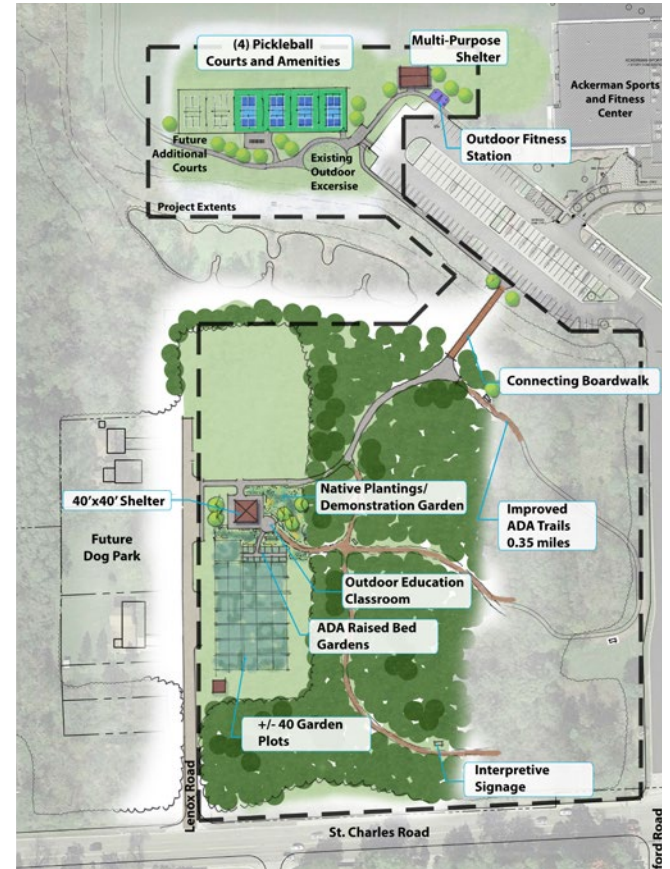
Additional Athletic Improvements \$500,000

- Village Green Park upgrades
- Back stops and sideline fence replacement
- New batting cages
- New waterless restroom

Acquire Land to Expand Parks \$2 million

- Focus would be on the south side, downtown, and other areas that are park “deserts.”

Lenox Road Parcel Additions \$400,000



- New boardwalk connecting to Ackerman Sports & Fitness Center parking lot and Ackerman Park
- New lighted pickleball courts
- New outdoor classroom
- New community raised garden beds
- New signage to connect guests to nature

Why is a park bond referendum needed?

The Glen Ellyn Park District currently maintains 29 parks, 21 playgrounds and 300 acres of open space for community enjoyment, recreation, fitness and leisure. These park resources—especially the most popular ones—periodically require replacement due to their life expectancy, daily wear and tear, and constant exposure to hot summers and freezing winters. We also need to keep up with demand as our community grows.

Community-wide surveys in 2014 and again in 2021 and 2022, and community engagement in master planning in 2018-2021 for major park improvements

helped Glen Ellyn Park District staff and the Board of Commissioners identify current and future community needs and develop a list of priority projects to meet those needs. They reviewed specific needs of the Glen Ellyn community—from infants to youth, young adults, families, seniors, and whether a person has a special need. They further prioritized projects according to current community needs and growing demands for services, whether facilities and equipment are—or will soon be—past their useful life, what is needed for healthy parks and what can improve the quality of life in Glen Ellyn Park District.

What is the financial impact to Glen Ellyn Park District Residents?

If voters approve the park bond referendum June 28, 2022, the additional cost to a homeowner in Glen Ellyn with a home valued at \$400,000 would be less than \$7 a month (about \$80 a year). The Glen Ellyn Park District tax levy would still be among the five lowest park districts in DuPage County.

You will see this language on the ballot:

Shall the Glen Ellyn Park District, DuPage County, Illinois, improve, equip and maintain Sunset Pool, expand, improve, equip and maintain Ackerman Sports & Fitness Center, improve, equip and maintain other parks and park facilities, acquire land for park purposes, and issue its bonds to the amount of \$15,900,000 for the purpose of paying the costs thereof?

VOTE!

Mail-in ballots distributed starting **May 19, 2022**

Early in-person voting starts **June 13, 2022**

Election day is **Tuesday, June 28, 2022**

Register to vote or determine your polling place by visiting the DuPage County website at dupagecounty.gov/election.



Follow us and tag
#LoveGlenEllynParks



Community Open Houses

Join us at a Park District Referendum Community Open House

Do you have questions about the referendum? Are you wondering about the facilities and programs that would benefit or the timelines?

Get all your questions answered. Staff and Board members will be available to share more details and provide accurate information so you are fully informed when you vote.

Wednesday, June 8

5:30 p.m. to 7:30 p.m.

Spring Avenue Recreation Center

Saturday, June 25

11:30 a.m. to 1:30 p.m.

Sunset Pool

In case of inclement weather, the Open House will move indoors to Spring Avenue Recreation Center.



community events

Movies in the Parks *Free!*

All ages

The Park District is excited to offer our free “Movies in the Parks” series this summer. Enjoy family friendly films in our beautiful parks under the stars. Bring your own chairs or blankets and sit back and enjoy the show.

Movies begin at dusk. The rain date and location is scheduled for Monday, August 15 at Lake Ellyn Park. (dm)

Soul

Date: Wednesday, June 1

Location: Lake Foxcroft Park

Encanto

Date: Wednesday, June 22

Location: Maryknoll Park

Sing 2

Date: Wednesday, July 27

Location: Newton Park

Jungle Cruise

Date: Wednesday, August 10

Location: Lake Ellyn Park

Boating in the Park

All ages

Rent a kayak, canoe, or a pedal boat for 20 minutes for \$10. Boating in the Park is open to all ages, however, all boating participants are required to properly wear and fit into the provided Glen Ellyn Park District life jacket before entering the lake. Life jackets are available for children (~20 lbs. and up) and adults. No registration required. (dm)

Day: Sunday

Time: 12pm-4pm

Dates:

June 12Lake Foxcroft Park

June 26.....Lake Foxcroft Park

July 17Location TBD

July 31.....Location TBD

August 14Location TBD

R/NR: \$10/boat for a 20-minute rental

Jazz in the Park *Free!*

All ages

Enjoy free live concerts in the park by the Glen Ellyn Jazz Ensemble, a 16-member group. Bring a blanket, lawn chairs and picnic dinner. In case of rain or severe weather, the concert will be canceled. Please note, no alcoholic beverages are permitted in the parks. (jr)

Time: 7pm-9pm

Wednesday, June 15: Newton Park

Wednesday, July 20: Maryknoll Park

Wednesday, August 17: Lake Ellyn Park

Family Bingo Night

All ages

Spend an evening at Ackerman SFC packed with bingo, pizza, and prizes. We'll play several rounds starting at 5:30pm. Prizes, like gift cards and candy, will be awarded at the end of each round. Pre-registration is not required. Kids ages 15 and under must be accompanied by an adult. Drop in any time with the whole family and have some fun. (sl)

Date: Friday, July 22

Time: 5pm-7pm

Location: Ackerman SFC

R/NR: \$1 per card



DUNCAN LAW GROUP Family Fun Ride at Tour of Lake Ellyn *Free!*

All ages

Make sure to sign up for the popular FREE Duncan Law Group Family Fun Ride and give your family the chance to take a spin on the closed Tour of Lake Ellyn course alongside the pros. Pre-register for the family ride online at gepark.org/register or at the event on the day of the race. Participants are required to wear a helmet. While the Family Fun Ride is free, non-perishable donations for Glen Ellyn Food Pantry are encouraged. (jr)

Date: Saturday, July 23

Time: 2:25pm

Location: Lake Ellyn Park

R/NR: Free w/registration

#/Link: [126573](https://www.126573.com)



Family Fun in the Neighborhood *Free!*

All ages

It's a fun-filled, family-friendly, free evening of activities and entertainment, close to your backyard. Join us in your neighborhood park for entertainment, interactive games and activities, face painting, arts and crafts, and more. Families are invited to pack a picnic and hang out in the park with us as you enjoy the night's activities. (jr)

Time: 5pm-7pm

Tuesday, July 26: Newton Park

Tuesday, August 2: Lake Foxcroft Park

Tuesday, August 9: Spalding Park

Sport Swap

Give and get gently used sports equipment at our upcoming Sport Swap event with Go Green Glen Ellyn. Gear up for fall sports and activities at this community exchange, held at Ackerman Sports & Fitness Center on the afternoon of Saturday, July 23. Equipment will be collected the preceding week. Watch gepark.org and gogreenglenellyn.org for details.

Glow in the Park Lantern Walk

All ages

Get ready to light up the night at Glow in the Park! The Glen Ellyn Park District and Charlie's Corner Foundation are partnering to offer this exciting evening of family activities benefiting Lurie Children's. Start the evening enjoying face painting, a balloon artist, live music, and more. Food will also be available for purchase. At 7:15pm, watch or march in the illuminated paper lantern walk around the lake. Decorate a lantern for the walk on site, or bring your own ready to go. Lanterns can be pre-purchased at Spring Avenue Recreation Center beginning August 1 (pay at Spring Avenue or pre-pay online using code [126568](https://www.126568.com)). There is a \$10 fee per lantern to decorate a lantern on-site (while supplies last; cash only). Glow in the Park is free to attend, but cash donations to Lurie Children's are encouraged.

Date: Sunday, September 11

Time: 5pm-8pm

Location: Lake Ellyn Park



friends of glen ellyn parks

fireworks from the fishing pier

a raffle benefiting the scholarship fund

buy tickets at gepark.org/fete

The lucky winner and up to eleven guests can watch the fireworks from this pristine spot on Lake Ellyn, which will be cordoned off for the winner's party. Raffle tickets will be on sale until 3 p.m. June 29 at: gepark.org/fete

Proceeds from this raffle benefit Fête fundraising efforts and the Friends of Glen Ellyn Parks' Scholarship Fund, created to enable families in need of financial assistance the opportunity to participate in Park District programs.

1 raffle ticket: \$5
3 raffle tickets: \$10
7 raffle tickets: \$20

GLEN ELLYN Gives

Blood Drives & Food Drives

We're hosting blood drives and drive-thru drop-off food drives at Ackerman SFC! Appointments are recommended for the blood drives but walkups are welcome. To donate nonperishable food items and toiletries to Glen Ellyn Food Pantry, just pull up to the main entrance and we'll do the rest.

Type	Date	Donation Window	Blood Donation Appointment Link
Blood & Food Drive	Tuesday, June 28	9am to 3pm	Schedule »
Blood & Food Drive	Tuesday, July 26	9am to 3pm	Schedule »
Blood & Food Drive	Tuesday, August 23	9am to 3pm	Schedule »
Blood & Food Drive	Tuesday, September 20	9am to 3pm	Schedule »

The blood drives are offered in partnership with State Representative Terra Costa Howard and Kiwanis Club of Glen Ellyn.

SUMMER 2022 • 10

● Registration open now ● Registration opens at 9am June 4



registered events

Summer Fun Night Camp

Ages 4-12

Need a place for the kids to hang out while you're at Summer Break at the Lake (page 12). Send them to Summer Fun Night Camp at Ackerman – an evening of games, food, and activities to entertain the young ones. Summer camp staff will divide our “night campers” into groups by age and provide a variety of activities throughout the evening. Location: Ackerman SFC. Min/Max: 30/100. (jr)

#/Link	Day	Date	Time	R/NR	
126532	F	7/1	6-10pm	\$25	•

Festival of the Arts – Barn Dance

All ages

Come for the art, stay for the dancing at this year's Festival of the Arts. Bring your family and friends and do-si-do the night away at the all-ages community barn dance featuring friendly instruction and live fiddle music. You don't need a partner or any experience to join in and have fun. Our caller will teach you everything you need to know, and the live music will get your feet going - just wear comfortable shoes! For more information, please visit downtownglenellyn.com. Location: Lake Ellyn Boathouse. Min/Max: 50/80. (jr)

#/Link	Day	Date	Time	R/NR	
126597	Sa	8/27	5-6:30pm	\$10	•



Disc Golf Ace Race

All ages

Each participant will play two rounds of disc golf on our 9-hole course, but instead of keeping score the only object is to throw aces (also known as a hole-in-one). Holes are shortened to have both adult and youth tees. Participants will play in the group with which they come; single players will be grouped with other single players. Players that score an ace will receive a \$25 Dick's Sporting Goods gift card which will be mailed to their home and will be entered to win the \$100 Visa gift card grand prize. The more aces you score, the more chances you have of winning. There will be one winner selected for the grand prize.

If you are new to disc golf or it has been a while since you last played, there will be a basket set up so you can practice throwing prior to the race. Bring your own disc to throw, or spares will be available to use. Each participant will receive a swag bag of disc golf items. Location: Maryknoll Park. Min/Max: 5/50. (sl)

#/Link	Day	Date	Time	R/NR	
126502	Sa	9/10	9-11am	\$15/\$25	•



ages 21+

Summer Break at the Lake

Ages 21 and up

Start your holiday weekend with Summer Break at the Lake. Head to Lake Ellyn Park for a memorable evening of neighborhood fun with music from Maggie Speaks, adult beverages from our own local vendors – The Beer Cellar, Two Hound Red and Common Good – and food available for purchase from a variety of area food trucks. Bring a chair or blanket and hang out on the lawn, or sit and relax at a picnic table or on the Boathouse deck and patios. No coolers, bags, or outside food/beverages will be permitted in the gated area. A portion of the proceeds from food truck sales will go towards the Glen Ellyn Fourth of July committee. Min/Max: 200/800. (jr)

Date: Friday, July 1

Gate Opens: 6pm

Concert: 6:30pm-9:30pm

Location: Lake Ellyn Park

R/NR: \$10

#/Link: [126531](#) •

Need a place for the kids to hang out? We've got you covered.

Sign then for Summer Fun Night Camp on June 1. See details on page 11.

Thirsty Thursday on the Deck

Ages 21 and up

Grab a group of friends and head down to Lake Ellyn for a relaxing evening on the Boathouse patio and deck. Craft beer and wine will be for sale by Glen Ellyn's own, The Beer Cellar. Enjoy a beverage, mix and mingle, and we'll provide the live entertainment and light snacks to cap-off a perfect night. Pre-registration available online; registration fee includes your first drink ticket. Tickets at the door will be cash-only, if available. Min/Max: 75/200. (jr)

Date: Thursday, July 14

Time: 6:30pm-9pm

Location: Lake Ellyn Boathouse

R/NR: \$15

#/Link: [126491](#) •

Date: Thursday, August 25

Time: 6:30pm-9pm

Location: Lake Ellyn Boathouse

R/NR: \$15

#/Link: [126495](#) •

Bags and Brews Tournament

Ages 21 and up

Nothing says summer like a good old-fashioned cornhole competition. Teams will consist of two players and play a double-elimination tournament. Each team receives a swag bag full of cool stuff. Craft beer and seltzer will be available for purchase from Two Hound Red.

One person will register as team captain. The tournament rules, bracket, and waiver form will be emailed to team captains prior to event. Min/Max: 10/100. (sl)

Date: Saturday, August 20

Time: 6pm-10pm

Location: Ackerman SFC

R/NR: \$50/\$65

#/Link: [126476](#) •





fitness and running

Freedom Four 4-Mile Run/Walk

Ages 5 and up

Start your July 4th holiday with a bang at the Freedom Four 4-Mile Run/Walk. A portion of the proceeds from this family-friendly event will go to the Friends of Glen Ellyn Parks' Scholarship Fund, which allows families in need access to recreation and athletic programs for little to no cost. The race kicks off at 7:30am "sharp." Awards are presented to the top two male and female finishers in each age division around 8:30am. Awards will be presented by Glen Ellyn's own Ethan Cepuran, 1st Olympic Medalist in Glen Ellyn Speed Skating Club history.

Freedom Four t-shirts are guaranteed to those that register by the early bird deadline. Participants registering during regular registration or on the day of the race will receive a t-shirt while supplies last.

NEW THIS YEAR: All participants ages 21 and over will be entitled to a free beer at the conclusion of the race. Two Hound Red will provide the beverages on the back patio of the Boathouse.

Date: Monday, July 4

Time: Race will start at 7:30am

Location: Lake Ellyn Park

Early Bird R/NR (Now-June 26): \$27 per person

Regular R/NR (June 27-July 3): \$32 per person

Day of Race R/NR (July 4): \$40 per person

Link: www.FreedomFourRun.com •

Registration is taken online only. Online registration is available until the start of the race.

Packet Pick-Up: Participants registered prior to June 30 can pick up their race packets at Ackerman SFC on Wednesday, June 29 or Thursday, June 30. Participants registered after June 30 can pick up their packets from 6:30am-7:30am on Monday, July 4 at Lake Ellyn Park. (rm)



2K Kids Color Bash Run

Ages 4-10

Runners will be doused head to toe in different colors at four different locations throughout the ~1.25-mile course! Prizes will be awarded to the top 3 runners in each age and gender group. Groups will be divided by ages: 4-5 years, 6-7 years, and 8-10 years. Fee includes timing bib, t-shirt, and post-race colorful events. Limited to the first 400 registered participants. (sl)

Date: Saturday, August 6

Time: 9am-11am

Location: Ackerman Park

Register by 7/31

Early Bird R/NR (Now-July 23): \$25/\$37 per person

Regular R/NR (July 24-July 31): \$30/\$42 per person

#/Link: [126318](https://www.eventbrite.com/e/2k-for-kids-color-bash-run-2021-tickets-29444444444) •

SAVE THE DATE

Lake Ellyn 1-Mile Sprint

Watch for more information on this new event coming to Lake Ellyn Park on Sunday, Sept. 18.

INTELLIGENTSIA CUP
RAY WHALEN BUILDERS
TOUR OF LAKE
ELLYN



LAKE ELLYN PARK
SATURDAY
JULY 23 2022

AMATEUR RACING STARTS AT 8:55 AM
THE DUNCAN LAW GROUP FAMILY FUN RIDE AT 2:25 PM

PRO WOMEN RACE AT 5:20 PM
PRO MEN RACE AT 6:45 PM



sunset pool

483 FAIRVIEW AVENUE, GLEN ELLYN

VIEW POOL RULES AT GEPARK.ORG/SUNSET

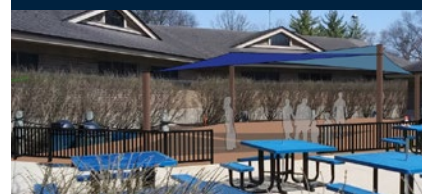
Season Passes

Season passes are on sale now! To purchase passes and get your Pool Photo ID (required for pool entry), please visit Spring Avenue Recreation Center, Main Street Recreation Center, or Ackerman Sports & Fitness Center. Pool passes may also be paid for online at gepark.org/membership prior to visiting a registration office to obtain your ID. Refunds are not given on season passes.

Type	Regular Rates R/NR Now to September 5
Infant (under age 3)	Free
Individual child (ages 3-17 years)	\$135/\$185
Individual adult (ages 18-59 years)	\$145/\$195
Senior (ages 60 and up)	\$80/\$100
Family of two	\$190/\$230
+ Additional family members	\$45/\$70

New Shade Structure

Pool visitors can look forward to additional seating opportunities in 2022. A shade canopy was installed adjacent to the concession building this winter. Underneath, an area that was previously turf grass was converted to a hardscape plaza with tables.



5-Visit Passes

5-visit passes are available for purchase and can be used for open or lap swim all summer long. You can buy 5-visit passes online at gepark.org/membership or in-person at Spring Avenue Recreation Center, Main Street Recreation Center, or Ackerman SFC during registration office hours. Physical membership cards are available or passholders can present a photo ID at the pool entrance for admission.

Type	R/NR
Child (ages 3-17 years)	\$25/\$35
Adult (ages 18-59 years)	\$40/\$50
Senior (ages 60 and up)	\$25/\$35

Daily Admission Fees

Proof of residency is required to receive the resident daily admission rates. Residents must accompany guests to receive the guest admission rate. There will always be at least one lap lane available for adult lap swimming only during open swim times. Children under the age of 14 must be accompanied by an adult, and any child under 3 is free.

Type	Before 5pm R/NR	After 5pm R/NR
Child (ages 3-17 years)	\$6/\$9	\$3/\$5
Adult (ages 18-59 years)	\$9/\$11	\$6/\$8
Senior (ages 60 and up)	\$5/\$8	\$3/\$5

Birthday Parties

Host your party at Sunset Pool! For an additional charge, you can entertain your guests under the recently installed shade canopy in the concessions area. Contact Chad Shingler at cshingler@gepark.org for more information and availability.

Private Pool Rentals

Sunset Pool is available for private rentals from 8pm-9:30pm on Friday and Saturday evenings throughout summer when events and programs are not running. Contact Chad Shingler at cshingler@gepark.org for more information and availability.

Sunset Slush at Sunset Pool

JUNE 6 TO JULY 28 (excl. June 27 and June 30)

Beat the heat this summer at Sunset Pool with Sunset Slush! They will be on-site selling Italian ice on Monday and Thursday afternoons from 1pm-4pm.



sunset pool schedule 2022

The pool will close in the event of lightning, thunder, or if the air temperature is less than 68 degrees. Check gepark.org/hotline for up-to-date information including weather-related closings. All pool closures are at the discretion of the Park District and pool manager.

HOLIDAY HOURS

Monday, July 4Open Swim 12pm-5pm
Monday, September 5Open Swim 12pm-5pm

NOW - JUNE 3

Tuesday, May 31Adult Lap Swim 6am-7am, Open Swim 12pm-6pm
Wednesday, June 1Adult Lap Swim 6am-7am, Open Swim 12pm-7:30pm
Thursday, June 2Adult Lap Swim 6am-7am, Open Swim 12pm-6pm
Friday, June 3Adult Lap Swim 6am-7am, Open Swim 12pm-7:30pm

JUNE 4 - JULY 23

MONDAY/WEDNESDAY

6am-7amAdult Lap Swim
11am-12pmAdult Lap Swim
12pm-7:30pmOpen Swim
6pm-7:30pmAdult Lap Swim

TUESDAY/THURSDAY

6am-7amAdult Lap Swim
11am-12pmAdult Lap Swim
12pm-5:30pmOpen Swim
Pool closes at 5:30pm for Gators Swim Meet

FRIDAY

6am-7amAdult Lap Swim
11am-12pmAdult Lap Swim
12pm-7:30pmOpen Swim
6pm-7:30pmAdult Lap Swim

SATURDAY

10am-1pmAdult Lap Swim
11am-12pmAdult/Tot Shallow Only Swim
12pm-7:30pmOpen Swim

SUNDAY

11am-12pmAdult Lap Swim
11am-7:30pmOpen Swim

JULY 24 - AUGUST 8

MONDAY-FRIDAY

6am-7amAdult Lap Swim
11am-12pmAdult Lap Swim
12pm-7:30pmOpen Swim
6pm-7:30pmAdult Lap Swim

SATURDAY

10am-1pmAdult Lap Swim
11am-12pmAdult/Tot Shallow Only Swim
12pm-7:30pmOpen Swim

SUNDAY

10am-11amAdult Lap Swim
11am-7:30pmOpen Swim

AUGUST 9 - AUGUST 28

MONDAY-FRIDAY

5pm-8pmAdult Lap Swim
6pm-8pmOpen Swim

SATURDAY/SUNDAY

10am-12pmAdult Lap Swim
12pm-7:30pmOpen Swim

AUGUST 29 - SEPTEMBER 2

CLOSED

SEPTEMBER 3 - 4

10am-12pmAdult Lap Swim
12pm-7:30pmOpen Swim



learn to swim

Learn to Swim provides a positive, fun-filled opportunity for children to learn skills that will help reduce the number of water accidents and to develop lifelong aquatic enjoyment. A testing day will take place on day one to ensure participants are placed into the correct level. Swim lessons run Monday through Thursday. In the event a class is canceled due to thunder or lightning, the class will be made up on Friday at the same time. No more than two classes will be made up per session. Refunds will not be issued for missed classes. If you have any questions, contact Chad Shingler at cshingler@gepark.org.

Preschool Learn to Swim

Ages 3-5

This swim lesson program covers swimming skills and water safety knowledge in a logical progression. Participants will learn and work on skills such as getting face/head wet, floating, gliding, and combined arm and leg action on front and back. All participants will be tested on the first day of class and placed into the correct level. Location: Sunset Pool. Min/Max: 4/30. (cs)

#/Link	Day	Date	Time	R/NR
124967	M-Th	6/20-6/30	8:30-9am	\$50/\$65 ●
124968	M-Th	6/20-6/30	9:20-9:50am	\$50/\$65 ●
124969	M-Th	6/20-6/30	10:10-10:40am	\$50/\$65 ●
124970	M-Th	6/20-6/30	11-11:30am	\$50/\$65 ●
124971	M-Th	7/5-7/14	8:30-9am	\$50/\$65 ●
124972	M-Th	7/5-7/14	9:20-9:50am	\$50/\$65 ●
124973	M-Th	7/5-7/14	10:10-10:40am	\$50/\$65 ●
124974	M-Th	7/5-7/14	11-11:30am	\$50/\$65 ●
124975	M-Th	7/18-7/28	8:30-9am	\$50/\$65 ●
124976	M-Th	7/18-7/28	9:20-9:50am	\$50/\$65 ●
124977	M-Th	7/18-7/28	10:10-10:40am	\$50/\$65 ●
124978	M-Th	7/18-7/28	11-11:30am	\$50/\$65 ●

Youth Learn to Swim

Ages 6-15

This swim lesson program covers swimming skills and water safety knowledge in a logical progression. Participants will learn and work on skills such as getting face/head wet, floating, gliding, front crawl with rotary breathing, backstroke, elementary backstroke, breaststroke, and butterfly. These classes will help your child be confident and safe in the water. Location: Sunset Pool. Min/Max: 4/30. (cs)

#/Link	Day	Date	Time	R/NR
125663	M-Th	6/20-6/30	8:20-9am	\$55/\$70 ●
125664	M-Th	6/20-6/30	9:10-9:50am	\$55/\$70 ●
125665	M-Th	6/20-6/30	10-10:40am	\$55/\$70 ●
125666	M-Th	6/20-6/30	10:50-11:30am	\$55/\$70 ●
125667	M-Th	7/5-7/21	8:20-9am	\$55/\$70 ●
125668	M-Th	7/5-7/21	9:10-9:50am	\$55/\$70 ●
125669	M-Th	7/5-7/21	10-10:40am	\$55/\$70 ●
125670	M-Th	7/5-7/21	10:50-11:30am	\$55/\$70 ●
125671	M-Th	7/18-7/28	8:20-9am	\$55/\$70 ●
125672	M-Th	7/18-7/28	9:10-9:50am	\$55/\$70 ●
125673	M-Th	7/18-7/28	10-10:40am	\$55/\$70 ●
125674	M-Th	7/18-7/28	10:50-11:30am	\$55/\$70 ●

Adult/Tot Water Exploration

Level I: 9-18 months with adult

Level II: 18 months-3 years with adult

Class is designed to make an infant's first experience in the water positive and fun. Instructor will facilitate the lesson while caregivers are the main instructor for the class. Class will help develop comfort in the water, swimming readiness, floating with assistance, and blowing bubbles. Adults will be taught how to prevent and manage an aquatic emergency and basic CPR instruction. Location: Sunset Pool. Min/Max: 4/16. (cs)

#/Link	Day	Date	Time	R/NR
Level I				
125654	Su	6/12 & 6/19	10:15-10:45am	\$26/\$42 ●
125655	Su	7/17 & 7/24	9:30-10am	\$26/\$42 ●
Level II				
125653	Su	6/12 & 6/19	8:45-9:15am	\$26/\$42 ●
125656	Su	6/12 & 6/19	9:30-10am	\$26/\$42 ●
125657	Su	7/17 & 7/24	8:45-9:15am	\$26/\$42 ●
125658	Su	7/17 & 7/24	10:15-10:45am	\$26/\$42 ●

Private Swim Lessons

Ages 6-15

Get a more personalized approach with our private swim lessons. These 30-minute one-on-one lessons are tailored to meet your personal needs and goals. During registration, you will be asked for your availability and skill level. Then, an instructor will contact you to set up the lesson. The wider your availability, the easier it is for us to schedule your lesson. Requests for specific instructors are encouraged, but not guaranteed. Instructors will begin to set up lessons in early June. You must give 24-hours' notice if you need to cancel or reschedule. Contact Chad Shingler for group/family private lesson opportunities and pricing at cshingler@gepark.org. (cs)

#/Link	# of Lessons	R/NR
125675	One	\$25/\$35 ●
125676	Two	\$50/\$60 ●
125677	Three	\$70/\$80 ●
125678	Five	\$120/\$130 ●



aquatic programs and events

Sunday Aqua Aerobics

Ages 18 and up

A great workout using the smooth resistance of water. This class includes aerobic conditioning, muscular endurance, and core stability in deep or shallow water. Location: Sunset Pool. Min/Max: 4/16. (cs)

#/Link	Day	Date	Time	R/NR
124957	Su	6/5-8/7	9-10am	\$85/\$100 ●

Water Polo Clinics

Ages 9-13

Participants will learn basic water polo skills such as shooting, passing, and goalkeeping in a fun team environment. Participants must be comfortable treading water for an extended period of time and must be able to swim 100 yards without stopping. Location: Sunset Pool. Min/Max: 4/16. (cs)

#/Link	Day	Date	Time	R/NR
124958	Su	6/5-6/19	10-11am	\$35/\$50 ●
124959	Su	7/17-8/7	10-11am	\$50/\$65 ●
124960	M-Th	7/25-7/28	9-10am	\$50/\$65 ●
124961	M-Th	8/1-8/4	9-10am	\$50/\$65 ●
124962	M-Th	8/8-8/11	9-10am	\$50/\$65 ●

Sunset Swim and Fun Camp

Ages 9-13

This swim camp emphasizes instruction, participation, and fun in a safe environment. Camp focuses on water sports and games including water polo, sharks and minnows, water dodgeball, diving fundamentals, and more. Participants must be comfortable treading water for an extended period of time and must be able to swim 100-yards without stopping. Location: Sunset Pool. Min/Max: 4/25. (cs)

#/Link	Day	Date	Time	R/NR
124979	M-Th	7/25-7/28	11:30am-12pm	\$75/\$90 ●
124980	M-Th	8/1-8/4	11:30am-12pm	\$75/\$90 ●
124981	M-Tu	8/8-8/9	11:30am-12pm	\$30/\$45 ●

Sunset Arts, Crafts, and Swim with the Guards

Ages 7-12

Join the Sunset Pool Lifeguards for arts and crafts followed by pool games, relay races, and swimming. Participants must be comfortable in the water without assistance. Location: Sunset Pool. Min/Max: 4/25. (cs)

#/Link	Day	Date	Time	R/NR
124982	Th	6/9	12-1:30pm	\$25/\$35 ●
124983	W	6/29	12-1:30pm	\$25/\$35 ●
124984	W	7/13	6-7:30pm	\$25/\$35 ●
124985	Th	7/28	12-1:30pm	\$25/\$35 ●
124986	W	8/3	12-1:30pm	\$25/\$35 ●

Daddy/Daughter Luau

Ages 7-12 with adult

Calling all dads! Escort your daughter(s) for a hilarious night of limbo, bingo, water balloon toss, contests, and more. Pizza will be served to end the night. While this event is geared toward dads and daughters, other adults or children are welcome to register. All children must be accompanied by an adult. Fee is per child. Location: Sunset Pool. Min/Max: 4/16. (cs)

#/Link	Day	Date	Time	R/NR
124987	W	7/27	6-7:30pm	\$25/\$40 ●

Mother/Son Beach Bash

Ages 7-12 with adult

A perfect opportunity for moms to enjoy an evening with their son(s) poolside. This fun-filled evening will be full of water games, activities, a photo booth, followed by pizza and water. While this event is geared toward moms and sons, other adults or children are welcome to register. All children must be accompanied by an adult. Fee is per child. Location: Sunset Pool. Min/Max: 4/16. (cs)

#/Link	Day	Date	Time	R/NR
125382	W	8/3	6-7:30pm	\$25/\$40 ●
126368	Th	8/4	6-7:30pm	\$25/\$40 ●

Teen Splash Bash

Ages 10-14

You're invited! Join us for a pool party complete with games and swimming. Pre-registration is required, and adults/caregivers must be present for check-in and checkout. Location: Sunset Pool. Max: 300. (cs)

#/Link	Day	Date	Time	R/NR
125383	F	6/10	8-9:30pm	\$5/\$10 ●

Back to School Bash

Ages 10-14

Make a splash with your friends before heading back to school. Take over Sunset Pool with other middle schoolers and enjoy a night of swimming, games, and fun as you soak up the last days of summer break. Pre-registration is required, and adults/caregivers must be present for check-in and checkout. Location: Sunset Pool. Max: 300. (cs)

#/Link	Day	Date	Time	R/NR
125384	F	8/5	8-9:30pm	\$5/\$10 ●

Adult Swim Club

Ages 18 and up

This is a non-competitive swim program led by a swim coach with daily workouts for participants. Register for a session or pay the \$10R/\$15NR daily drop-in fee (paid at Sunset Pool). Location: Sunset Pool. Min/Max: 5/50. (cs)

#/Link	Day	Date	Time	R/NR
125735	Sa	6/4-6/25	9-10am	\$40/\$55 ●
125739	Sa	7/2-8/6	9-10am	\$50/\$65 ●



845 PERSHING AVENUE, GLEN ELLYN

Must be a minimum of 50 degrees to open the courses. Check gepark.org/hotline for up-to-date information including weather-related closings.

Mini Golf Fees

Child admission (ages 3-13).....	\$6
Regular admission (ages 14 and up).....	\$7
Seniors (ages 60 and up) and military.....	\$6

Mini Golf Hours

NOW - AUGUST 7

Monday-Saturday.....	10am-10pm
Sunday.....	11am-8pm

AUGUST 8 - SEPTEMBER 5

Monday-Saturday.....	10am-9pm
Sunday.....	11am-7pm

SEPTEMBER 6 - OCTOBER 30

Monday-Thursday.....	Closed
Friday.....	4pm-9pm
Saturday.....	11am-9pm
Sunday.....	11am-7pm

HOLIDAY/SPECIAL HOURS

July 4 (Independence Day).....	10am-3pm
September 5 (Labor Day).....	10am-3pm

MINI GOLF & SPLASH PARK



Mini Golf Party

Your party includes a two-hour rental of the Maryknoll Clubhouse party room and miniature golf admission. Food packages are also available. For more information and to book, please email chartnett@gepark.org.



845 PERSHING AVENUE, GLEN ELLYN

Maryknoll Splash Park features 12 spray pieces including a water tower, team spray, water tunnel, and zero-depth pad. Must be a minimum of 70 degrees to open the splash park. Check gepark.org/hotline for up-to-date information including weather-related closings. See rules and regulations online at gepark.org/splash-park.

Splash Park Fees

Infant admission (under age 1).....	Free
Child admission (ages 1-14 w/adult).....	\$3
Adult admission (ages 18 and up).....	\$1

Splash Park Hours

OPEN FROM NOW - LABOR DAY

Monday-Saturday.....	10am-6:30pm
Sunday.....	11am-7pm

HOLIDAY/SPECIAL HOURS

July 4 (Independence Day).....	10am-3pm
September 5 (Labor Day).....	10am-3pm



Maryknoll Splash Park Private Rental

The splash pad is available for groups of 50 patrons or less Monday-Saturday for private rentals from 7-8:30pm. Rentals include 2 hour use of the pavilion from 6:30-8pm. Six permanent picnic tables are set up for your exclusive use. Available June through August; no private rentals on 7/4. To book, call Christine Hartnett at (630) 942-7268.

Splash Park Party

Host your child's party at the Maryknoll Splash Park. Kids will play in twelve interactive water features before heading to the Clubhouse or the picnic shelter. To book, email chartnett@gepark.org.

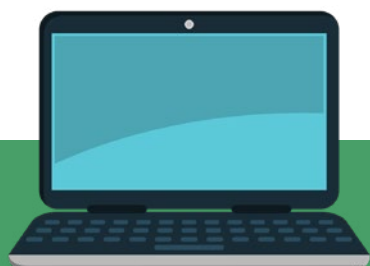


preschool 2022-2023 School Year



At our Preschool, children learn through an academic and play-based curriculum to facilitate learning concepts including writing, science, vocabulary, numbers, shapes, math, and other cognitive abilities. Program activities serve many developmental purposes; participants learn problem-solving skills and how to sort out and organize new ideas. They develop an understanding of social awareness, and investigate and experiment with new possibilities. The academics incorporated into the program will ensure students are prepared to move to the next level and eventually be Kindergarten-ready.

Our program is a mixture of teacher-guided activities and playtime, with small and large group activities based around a weekly theme. Children engage in fine and large motor skill activities, art projects, music, books, dramatic play, cooking, writing and more. Children also have monthly visits from B#Sharp Music for Children and the Park District Naturalist. Please contact Jeannie Robinson at (630) 942-7267 or jrobinson@gepark.org with questions.



preschool registration NOW ONLINE!

Registration for the Glen Ellyn Park District Preschool Program is now available online! Visit gepark.org/register to view available classes and register for open spots and waitlists.

Questions or want to schedule a tour?

Email Jeannie Robinson at jrobinson@gepark.org.

preschool programs & requirements

2-YEAR-OLDS:

Children must be 2 as of Mar. 15, 2022 for the Monday-Thursday classes or as of June 15, 2022 for the Friday class

Geared toward having a successful first school-away-from-caregiver experience while preparing for the three-year-old program. Emphasis is placed on socialization skills and introduction to a structured class. In case of potty accidents, caregivers will be notified.

3-YEAR-OLDS:

Children must be 3 as of Sept. 1, 2022

Geared toward having a successful first school experience. Emphasis is placed on social skills, fine motor skills, shapes, colors, name recognition, following direction, sharing and play. Must be able to use the restroom independently.

4-YEAR-OLDS:

Children must be 4 as of Sept. 1, 2022

Designed for developing kindergarten readiness. Emphasis is placed on the development of academics through structured activities, introducing math, lower/upper case letters, letter sound recognition, writing/sight words, and developing independence. Must be able to use the restroom independently.

5-YEAR-OLDS:

Children must turn 5 between Sept. 1, 2022 - Jan. 1, 2023

Designed for developing kindergarten readiness. Emphasis is placed on the development of academics through structured activities, simple math, lower/upper case letters, letter sound recognition, writing/sight words, punctuation, capitalization, problem solving, and developing independence.

registration

Registration will be for the complete school year, September 2022-May 2023.

Open Registration

Registration is now open for both new and returning families. New this year, families registering for the Preschool Program may do so online at gepark.org/register, or in person at the Spring Avenue or Main Street Recreation Centers. Caregivers must submit a copy of their child's birth certificate when registering in person. If registering online, birth certificates can be submitted to the office or by email to jrobinson@gepark.org by August 1, 2022. If a copy of your child's birth certificate is not received by August 1, your spot in the selected class may be forfeited.

Schedule

The 2022-2023 preschool year begins the week of September 6, 2022 and concludes the week of May 8, 2023. Classes will not meet on legal public holidays as determined by the District 41 school calendar. There may be additional dates, which will be stated in your Glen Ellyn Park District Preschool Calendar.

Payment

Preschool uses automatic billing/payments. A separate nonrefundable deposit of \$75 will be required upon registration. The yearly class fee is divided into six equal amounts charged to your credit card or e-check each month July-December. You may also pay for the entire year at registration.

Class	Location	Room	Days/Dates	Time	R/NR Annual or Installment Fees	#/ Link
2-Year-Old <i>as of 6/15/22</i>	Spring Avenue	Multi B	Fridays, Sept. 9-May 12	9-11am	\$611/916.50 annually or \$101.83/\$152.75 six installments	124539 Waitlist
2-Year-Old <i>as of 3/15/22</i>	Spring Avenue	Multi B	M/W, Sept. 7-May 10	9-11am	\$1,221/\$1,831.50 annually or \$203.50/\$305.25 six installments	124540 Waitlist
2-Year-Old <i>as of 3/15/22</i>	Spring Avenue	Multi B	Tu/Th, Sept. 8-May 11	9-11am	\$1,221/\$1,831.50 annually or \$203.50/\$305.25 six installments	124541 Waitlist
2-Year-Old <i>as of 3/15/22</i>	Spring Avenue	Multi B	Tu/Th, Sept. 8-May 11	12-2pm	\$1,221/\$1,831.50 annually or \$203.50/\$305.25 six installments	124542
3-Year-Old	Main Street	Room 106	Tu/Th, Sept. 6-May 11	8:45-11:15am	\$1,353/\$2,029.50 annually or \$225.50/\$338.25 six installments	124544
3-Year-Old	Main Street	Room 106	M/W/F, Sept. 7-May 12	8:45-11:15am	\$2,030/\$3,045 annually or \$338.33/\$507.50 six installments	124543 Waitlist
3-Year-Old	Main Street	Room 204	Tu/Th, Sept. 6-May 11	8:45-11:15am	\$1,353/\$2,029.50 annually or \$225.50/\$338.25 six installments	124546
3-Year-Old	Main Street	Room 204	M/W/F, Sept. 7-May 12	8:45-11:15am	\$2,030/\$3,045 annually or \$338.33/\$507.50 six installments	124545 Waitlist
3-Year-Old	Spring Avenue	Preschool Room	Tu/Th, Sept. 6-May 11	8:45-11:15am	\$1,353/\$2,029.50 annually or \$225.50/\$338.25 six installments	124547 Waitlist
4-Year-Old	Main Street	Room 114	M-Th, Sept. 6-May 11	8:45-11:15am	\$2,838/\$4,257 annually or \$473/\$709.50 six installments	124548 Waitlist
4-Year-Old	Main Street	Room 204	M-Th, Sept. 6-May 11	12:15-2:45pm	\$2,838/\$4,257 annually or \$473/\$709.50 six installments	124549
4-Year-Old	Spring Avenue	Preschool Room	M/W/F, Sept. 7-May 12	8:45-11:15am	\$2,129/\$3,193.50 annually or \$354.83/\$532.25 six installments	124551
4-Year-Old	Spring Avenue	Preschool Room	M-Th, Sept. 6-May 11	12:15-2:45pm	\$2,838/\$4,257 annually or \$473/\$709.50 six installments	124550
5-Year-Old	Main Street	Room 106	M-F, Sept. 6-May 12	12:15-2:45pm	\$3,713/\$5,569.50 annually or \$618.83/\$928.25 six installments	124552



Preschool Playtime

AFTER SCHOOL PROGRAM

Ages 3-4

This structured after school playtime program at Main Street Recreation Center (Room 114) includes free play, crafts, games, and gym time for your little one to further explore school. Register from one to four days per week for the full school year. Billing is on a monthly basis, beginning September 1. Space is limited per day. Please choose your day(s) upon registration. Min/Max: 8/12. (jr)

Full School Year (32 Weeks)

R/NR-\$560/\$840

#/Link	Day	Date	Time	
124558	M	Sept. 12-May 8	11:45am-2:15pm	●
124559	Tu	Sept. 13-May 9	11:45am-2:15pm	●
124560	W	Sept. 14-May 10	11:45am-2:15pm	●
124561	Th	Sept. 15-May 11	11:45am-2:15pm	●

Kindergarten Enrichment

Ages 5-6 (must be born by September 1, 2017, and enrolled in Kindergarten)

The Glen Ellyn Park District offers a quality enrichment experience for kindergarten-age children attending half-day Kindergarten. This popular program, held at Main Street Recreation Center (Room 304), is designed to enrich and enhance the regular district Kindergarten program in the areas of motor skills, language arts, music, and creative arts. The goal is to allow each child to mature academically and socially in a creative, encouraging, and challenging learning environment.

Classes offer a balance of both structured and unstructured activities. Activity areas to choose from include blocks, quiet time, dramatic play, small and large motor activities as well as areas for music, art, literacy, and science/discovery. We will provide a space for kids to eat lunch after (AM) or prior (PM) to KE. Please send a sack lunch if you plan to have your child eat lunch at KE. Min/Max: 8/12. (jr)

R/NR-\$1,782/\$2,673 annually or \$297/\$445.50 six installments
Plus a separate \$75 nonrefundable deposit.

#/Link	Day	Date	Time	
124555	Tu & Th	Sept. 6-May 11	8:45-11:30am	●
124556	Tu & Th	Sept. 6-May 11	12:30-3:15pm	●
124553	M & W	Sept. 7-May 10	8:45-11:30am	●
124554	M & W	Sept. 7-May 10	12:30-3:15pm	●

SUMMER 2022 • 24

● Registration open now ● Registration opens at 9am June 4



early childhood interest

who to contact:

- (cs) Chad Shingler, cshingler@gepark.org
- (dm) David MacDonald, dmacdonald@gepark.org
- (jr) Jeannie Robinson, jrobinson@gepark.org
- (sl) Stacey Lim, slim@gepark.org



ROCK N' KIDS

Tot & Kid Rock

Ages 1-6

This interactive class has everyone on their feet. We all learn together while engaging in fun, creative, music-based activities, while using rhythm instruments and movement props. All class procedures are designed to keep staff and students safe. Activities are age appropriate by class and include songs and rhymes, rhythm and coordination, fine and gross motor, imagination and sensory, listening and following directions skills. Except for Kid Rock II classes, all children must be accompanied by an adult. Location: Main Street Recreation Center. Min/Max: 4/20. (cs)

#/Link	Day	Date	Time	R/NR
--------	-----	------	------	------

Tot Rock: Ages 12-23 months with adult

125290	F	6/10-7/1	9:30-10:10am	\$45/\$60 ●
125299	F	7/15-8/5	9:30-10:10am	\$45/\$60 ●

Kid Rock I: Ages 2-3 with adult

125293	F	6/10-7/1	10:15-10:55am	\$45/\$60 ●
125301	F	7/15-8/5	10:15-10:55am	\$45/\$60 ●

Kid Rock II: Ages 3-5 without adult

125296	F	6/10-7/1	11:45am-12:25pm	\$45/\$60 ●
125303	F	7/15-8/5	11:45am-12:25pm	\$45/\$60 ●

Kid Rock III: Ages 1-6 with adult

125295	F	6/10-7/1	11-11:40am	\$45/\$60 ●
125302	F	7/15-8/5	11-11:40am	\$45/\$60 ●

GLEN ELLYN PUBLIC LIBRARY

Sing and Soar with Nanny Nikki *Free!*

All ages

Glen Ellyn Public Library presents a FREE Concert in the Park with Nanny Nikki at Lake Ellyn Park! Nanny Nikki will host this fun and interactive musical show in the park with sing-alongs, dancing, and puppets. Bring a blanket or chair and your dancing shoes - you won't want to miss this exciting time for all ages. Location: Lake Ellyn Park. (jr)

Day	Date	Time	R/NR
Sa	6/25	10:30-11am	Free



WEE HEART MUSIC

Summer Sing-Along

Ages birth to 5 years with adult

Music brings joy to the whole family and supports your child's development in every way. Enjoy interactive, adult-child songs, chants, dances, and instrumental jam sessions. There is a \$15 discount for the second child. Location: Main Street Recreation Center. Min/Max: 5/12. (cs)

#/Link	Day	Date	Time	R/NR
125274	Sa	6/4-6/25	9:15-10am	\$75/\$90 ●
125275	Sa	6/8-6/29	10:15-11am	\$75/\$90 ●
126305	M	6/6-6/27	9:15-10am	\$75/\$90 ●
126306	M	6/6-6/27	10:15-11am	\$75/\$90 ●
126307	M	6/6-6/27	11:15am-12pm	\$75/\$90 ●
126308	Th	6/9-6/30	9:15-10am	\$75/\$90 ●
126309	Th	6/9-6/30	10:15-11am	\$75/\$90 ●

MUSICREATORs

Nature's Music

Ages 1-5 with adult

In this MusiCreators class, focused on critters and activities of the summer, you will participate in fun and developmentally appropriate activities with your children that will stimulate their imagination, improve their vocabulary, and enhance the social and cognitive skills that go hand in hand with school achievement. Together, we'll sing songs about the season of summer, which will help your child gain independence, confidence, and learn self-expression. We will also move to music with your child using percussion instruments, scarves, hoops, and stick ponies, improving your child's gross and fine motor coordination. Each session is filled with new songs. Location: Main Street Recreation Center. Min/Max: 4/12. No class 6/28. (cs)

#/Link	Day	Date	Time	R/NR
125375	Tu	6/7-7/19	9:45-10:20am	\$82/\$97 ●
125376	Tu	6/7-7/19	10:30-11:05am	\$82/\$97 ●



Circle Time in the Park

Ages 2.5-4 with adult

Grab your beach towel or blanket to sit upon while you and your little one enjoy this outdoor, interactive circle time in the park. For this gathering, friends will enjoy themed stories, music, and movement together at our listed park. Registered participants will receive a packet of art materials to take home and create a project to go along with the theme of the week. This program will be canceled and refunded in the event of inclement weather. Min/Max: 10/20. (jr)

#/Link	Day	Date	Time	R/NR	
Lake Ellyn Park					
126508	F	7/22	10-11am	\$10/\$15	●
Newton Park Playground					
126517	F	8/19	10-11am	\$10/\$15	●

GLEN ELLYN PUBLIC LIBRARY

Storytime in the Park *Free!*

All ages

Come out to your favorite neighborhood parks for songs, rhymes, and stories. This program is designed for children and their grownups. Please plan to attend and be engaged with your child for this program. Drop offs are not allowed. In case of inclement weather, please check the Glen Ellyn Public Library social media for updates. Contact the Glen Ellyn Public Library at (630) 469-0879 for more details.

Day	Date	Time	Location	R/NR
Tu	6/6-7/25	10:30-11am	Lake Ellyn Park	Free
Th	6/6-7/25	10:30-11am	Co-Op Park	Free

Ackerman Arts and Crafts

Ages 4-10

Young makers will dabble in all kinds of activities to spark their creativity such as paper art, jewelry making, clay sculpting, and more. Every session we pick new kid-friendly projects themed around the season or holiday. All materials are provided. The best part? Kids take home their projects, but the mess stays at Ackerman. Location: Ackerman SFC. Min/Max: 5/25. (sl)

#/Link	Day	Date	Time	R/NR	
125137	Sa	6/18-7/9	10-10:45am	\$45/\$60	●
126478	Sa	7/23-8/13	10-10:45am	\$45/\$60	●
126486	Sa	8/27-9/17	10-10:45am	\$45/\$60	●

DISCOVERY LANGUAGE

Introduction to Spanish

Ages 3-6

Discovery introduces the Spanish language in a recreational and simple format. Students will be given an “ear” for pronunciation and build confidence in speaking and learning about another language. Students will learn “everyday” language via repetition, games, songs, and hands-on activities. Each class is progressive and adaptable according to the ability of the student. Students receive materials for them to keep. Location: Main Street Recreation Center. Min/Max: 5/12. No class 10/10. (dm)

#/Link	Day	Date	Time	R/NR	
126382	M	9/12-10/24	4:30-5:15pm	\$102/\$122	●

Safe Kids

Ages 3-5

This interactive class focuses on thinking safely and making safe choices in and around the home. Kids learn what to do in an emergency, when to call 911, and how to deal with strangers. Each child receives a safety packet to take home. Location: Spring Avenue Recreation Center. Min/Max: 6/10. (dm)

#/Link	Day	Date	Time	R/NR	
126388	Tu	7/12	4-5pm	\$25/\$40	●
126390	Tu	9/13	4-5pm	\$25/\$40	●

Safe Kids with First Aid

Ages 3-5

Safety and first aid go hand in hand. Children learn simple rules to think safely and make safe choices at home and away. We also present basic first aid information, including treatment of small cuts, bumps and bruises, nosebleeds, minor burns, and more. Each child receives a safety packet and creates a small first aid kit to take home. Location: Spring Avenue Recreation Center. Min/Max: 6/10. (dm)

#/Link	Day	Date	Time	R/NR	
126389	W	7/13	4-5pm	\$25/\$40	●
126391	W	9/14	4-5pm	\$25/\$40	●

SHINING STAR PRODUCTIONS

Little Actors Club

Ages 3-6

Children love this innovative drama class that develops their imagination and introduces little actors to the performing arts in a fun and creative atmosphere. Each week is an exciting adventure into the imagination with changing themes, music, and games. Club members learn theatre terms and gain enhanced spontaneity, creativity, and self-esteem. Themes for upcoming classes will be announced on a weekly basis. Most themes are not repeated for two years. Location: Main Street Recreation Center. Min/Max: 6/10. No class 7/4. (cs)

#/Link	Day	Date	Time	R/NR	
125033	M	6/13-7/11	5-5:45pm	\$45/\$60	●
125034	M	7/18-8/15	5-5:45pm	\$50/\$65	●

friends of glen ellyn parks fireworks from the fishing pier

a raffle benefiting the scholarship fund

buy tickets at gepark.org/fete

The lucky winner and up to eleven guests can watch the fireworks from this pristine spot on Lake Ellyn, which will be cordoned off for the winner's party. Raffle tickets will be on sale until 3 p.m. June 29 at: gepark.org/fete

Proceeds from this raffle benefit Fête fundraising efforts and the Friends of Glen Ellyn Parks' Scholarship Fund, created to enable families in need of financial assistance the opportunity to participate in Park District programs.

1 raffle ticket: \$5
3 raffle tickets: \$10
7 raffle tickets: \$20

SPRING 2022 • 28

● Registration open now ● Registration opens at 9am June 4



youth and teen interest

who to contact:

- (cs) Chad Shingler, cshingler@gepark.org
- (dm) David MacDonald, dmacdonald@gepark.org
- (sl) Stacey Lim, slim@gepark.org





Tween Night

Ages 8-12

Get out and have fun! Tweens will take over the gym and turf at Ackerman SFC for a night of sports, games, and other fun activities. We will have pizza for all participants. Adults must accompany their kids for check-in and check-out. Location: Ackerman SFC. Min/Max: 20/100. (sl)

#/Link	Day	Date	Time	R/NR	
125041	F	6/17	6-9pm	\$25/\$40	●
126494	F	7/8	6-9pm	\$25/\$40	●
126492	F	9/9	6-9pm	\$25/\$40	●

Teen Splash Bash

Ages 10-14

You're invited! Join us for a pool party complete with games and swimming. Pre-registration is required, and an adult/caregiver must be present for check-in and checkout. Location: Sunset Pool. Max: 300. (cs)

#/Link	Day	Date	Time	R/NR	
125383	F	6/10	8-9:30pm	\$5/\$10	●

Back to School Bash

Ages 10-14

Make a splash with your friends before heading back to school. Take over Sunset Pool with other middle schoolers and enjoy a night of swimming, games, and fun as you soak up the last days of summer break. Pre-registration is required, and an adult/caregiver must be present for check-in and checkout. Location: Sunset Pool. Max: 300. (cs)

#/Link	Day	Date	Time	R/NR	
125384	F	8/5	8-9:30pm	\$5/\$10	●



MAD SCIENCE

Secret Agent Lab

Ages 5-12

Ever dream of becoming a secret agent? We'll start with the basics: from decoding messages to metal detectors and night vision, campers will check out spy tech equipment and take-home lots of gadgets like spy binoculars. Step into the shoes of a detective as you uncover the science involved in evidence gathering and analysis. Figure out the science of forensics in a hands-on look at crime scenes. Become a super spy and learn clever ways of performing tasks as we take on a hands-on investigation of the science that spies use. Location: Spring Avenue Recreation Center. Min/Max: 12/25. (dm)

#/Link	Day	Date	Time	R/NR	
126409	M-F	7/18-7/22	9am-1pm	\$300/\$350	●

CHESS WIZARDS

Checkmate

Ages 6-12

Chess Wizards offers fun, intellectual, and challenging chess education and tournament experiences to children of all abilities and ages. In addition to weekly chess lessons and traditional gameplay, we incorporate variations of chess games that build teamwork and foster a genuine enjoyment of a game over a thousand years old. All experience levels welcome. Location: Main Street Recreation Center. Min/Max: 10/20. (dm)

#/Link	Day	Date	Time	R/NR	
126411	Tu	9/6-10/18	4-5pm	\$170/\$220	●



Ackerman Arts and Crafts

Ages 4-10

Young makers will dabble in all kinds of activities to spark their creativity such as paper art, jewelry making, clay sculpting, and more. Every session we pick new kid-friendly projects themed around the season or holiday. All materials are provided. The best part? Kids take home their projects, but the mess stays at Ackerman. Location: Ackerman SFC. Min/Max: 5/25. (sl)

#/Link	Day	Date	Time	R/NR	
125137	Sa	6/18-7/9	10-10:45am	\$45/\$60	●
126478	Sa	7/23-8/13	10-10:45am	\$45/\$60	●
126486	Sa	8/27-9/17	10-10:45am	\$45/\$60	●

CHERYL RAUSCH ART

Paint Your Favorite Monster

Ages 5-11

Have a favorite monster you always enjoyed seeing? Well, take some time to create them in a work of art! All supplies will be provided. So, just bring a good memory and as always – your imagination. Location: Spring Avenue Recreation Center. Min/Max: 5/25. (cs)

#/Link	Day	Date	Time	R/NR	
125965	W	6/22	11am-12:30pm	\$45/\$60	●

CHERYL RAUSCH ART

Create Your Self Portrait in Acrylics

Ages 12-17

Show a different side of yourself with a self-portrait. Using acrylic paints, you will express who you are both inside and out. Is it as a superhero or a sports legend? Learn basic painting techniques to help artwork come to life. Bring your imagination and the vision of how you see yourself, and we'll provide the supplies. Location: Spring Avenue Recreation Center. Min/Max: 5/15. (cs)

#/Link	Day	Date	Time	R/NR	
125970	F	8/5	1-3pm	\$50/\$65	●

CHERYL RAUSCH ART

Fun with Photography

Ages 12-17

Learn design, layout, and shooting tips when taking photos on your phone or DSLR camera. Required: each attendee must have their own camera and a basic knowledge of how to work with their equipment. Location: Spring Avenue Recreation Center. Min/Max: 5/15. (cs)

#/Link	Day	Date	Time	R/NR	
125969	W	6/15	1-2:30pm	\$45/\$60	●



Sew Simple: Hand Sewing

Ages 5-7

The art of sewing helps children develop their fine motor skills, practice patience, and build confidence. Learn hand sewing as you make fun projects with step-by-step instructions. Participants will learn various hand stitches, how to thread a needle, and how to sew on a button in this beginner level class. Location: Spring Avenue Recreation Center. Min/Max: 3/8. (dm)

#/Link	Project	Day	Date	Time	R/NR	
126455	Teddy Bear	Tu	7/12	1-2:30pm	\$25/\$35	•
126456	Back to School	Tu	8/16	4-5:30pm	\$25/\$35	•
126457	Stuffed Pig	Tu	9/13	4-5:30pm	\$25/\$35	•

Machine Sewing Combo: Beginners-Advanced

Ages 8-13

Sewing beginners will expand their creativity by learning how to operate a sewing machine, while participants with more experience will strengthen their sewing ability. Everyone in this combo sewing class will create a project to take home. The basic skills taught in this class will provide a great foundation for other sewing classes and projects. Bring your own sewing machine (or use ours) and a yard of cotton fabric. Location: Spring Avenue Recreation Center. Min/Max: 2/7. (dm)

#/Link	Day	Date	Time	R/NR	
126459	W	7/6	10am-12pm	\$45/\$60	•
126460	W	7/13	10am-12pm	\$45/\$60	•
126461	W	7/20	10am-12pm	\$45/\$60	•
126462	W	7/27	10am-12pm	\$45/\$60	•

Doll Outfit Sewing: Machine Sewing

Ages 7-12

In this two-session class, participants will sew a doll-sized outfit using a sewing machine. Prior sewing experience preferred. Bring your own sewing machine or use one of ours. Fabric and supplies provided. Min/Max: 2/7. (dm)

#/Link	Day	Date	Time	R/NR	
126458	Th/Tu	7/14-7/19	9:30-11:30am	\$100/\$125	•

Simple Crocheting

Ages 8-13

If you can hold a pencil, you can learn to crochet. This beginner crochet class will introduce students to the proper use of a crochet hook and many different types of yarn. The instructor will focus on the fundamentals of crocheting such as simple stitches and tips for working with yarn to make a fun project. Learn to crochet by making fingerless gloves with step-by-step instruction. Students need a skein of solid, light-colored #4 medium-weight yarn and size U.S. H-8 (5mm) crochet hook for the first class. Location: Spring Avenue Recreation Center. Min/Max: 3/8. (dm)

#/Link	Day	Date	Time	R/NR	
126410	Th	7/14-7/28	5:30-7:30pm	\$90/\$105	•

DISCOVERY LANGUAGE

Beginners Spanish

Ages 6-12

This program aims to enhance each student's motor skills as well as linguistic skills. Movement and physical activity will be incorporated into each Spanish lesson. With our variety of immersion activities, from workbooks to relay races, art projects, and science experiments, your student will develop a love for learning and never lose interest in the Spanish language. Each class is progressive and adaptable according to the ability of the student. Location: Main Street Recreation Center. Min/Max: 5/12. No class 10/10. (dm)

#/Link	Day	Date	Time	R/NR
126383	M	9/12-10/24	5:30-6:15pm	\$95/\$115 •

MAGIC OF GARY KANTOR

Abracadabra: Magic Class

Ages 5-12

Children are guaranteed a great time as they learn new, age-appropriate tricks each class: cards, ropes, coins, mind-reading, and more. The tricks appear difficult but are easy to learn and perform. All materials are provided; each child receives a magic kit to take home. Location: Spring Avenue Recreation Center. Min/Max: 5/40. (dm)

#/Link	Day	Date	Time	R/NR
125610	W	6/29	4-4:55pm	\$22/\$33 •
126412	M	8/8	6:45-7:40pm	\$22/\$33 •
126413	M	9/12	4-4:55pm	\$22/\$33 •

GLITZY GIRLZ

Back to School Fashion Fun

Ages 4-11

Head back to school in style with the help of Glitzy Girlz. Create a beaded piece to wear as jewelry or as an accessory for your backpack. Themes will be available such as funky neon, blingy glam, sports, and animals. We'll also decorate and customize pencil cases and bags with paints, embellishments, stickers, and more. All guests will go home with a surprise goodie bag. Location: Spring Avenue Recreation Center. Min/Max: 5/25. (cs)

#/Link	Day	Date	Time	R/NR
125620	Th	7/28	6-7pm	\$38/\$55 •



DUNHAM WOODS FARM

Horsemanship for Kids

Ages 10-17

Join in the fun with beginning riding lessons. Participants will explore the proper ways to groom, tack, and handle horses. In the saddle, you will learn the basics of riding at the walk and trot. Lessons will be held in our indoor arena during inclement weather. Make up class held at the end of the six weeks. First day of class is orientation and groundwork. Riders should wear jeans or Jodhpur pants and hard soled riding or hiking boots with a small, low heel. Must have an approved riding helmet or bicycle helmet to ride. Location: Dunham Woods Farm, Elgin. Min/Max: 1/4. (dm)

#/Link	Day	Date	Time	R/NR
125616	Sa	6/4-7/9	1:30-2:30pm	\$180/\$250 •
126420	Sa	8/27-10/1	1:30-2:30pm	\$180/\$250 •

Babysitting for Success

Ages 10-15

Be the best babysitter you can be. In this class, students engage in discussion, role playing, and practical experiences to learn diapering, feeding, playing with children, child development, handling emergencies, and first aid. Students should bring a snack and a doll to class. Students are awarded certificates upon completion. Resource materials are included. Location: Spring Avenue Recreation Center. Min/Max: 8/12. (dm)

#/Link	Day	Date	Time	R/NR
126417	Tu/Th/Tu	6/14-6/21	6/14 & 6/16: 5-8pm 6/21: 5-7pm	\$80/\$120 •
126418	Tu/Th/Tu	8/16-8/23	8/16 & 8/18: 5-8pm 8/23: 5-7pm	\$80/\$120 •

LISA LOMBARDI

Chocolate Bridges of Hope

Ages 6-13

This class demonstrates how the feeling of hope in the present day can lead to a sweet outcome in the future. Smashing negative thoughts, knowing our strengths, using humor, having emotional self-control, and using a growth mindset are just some of the strategies we will learn. To dramatize the concept of hope, we will engineer a Hershey's chocolate candy bridge while we learn about the world's most decadent bridges. Kids may take their edible creation home or eat it on the spot. Location: Spring Avenue Recreation Center. Min/Max: 7/18. (dm)

#/Link	Day	Date	Time	R/NR	
125683	Tu	6/14	5-6pm	\$29/\$44	●

LISA LOMBARDI

A Kids Life Coaching Laughter Lab

Ages 6-13

Whether your child is naturally funny or not, they will have the opportunity to develop and execute comedic skills, gain a higher sense of self-esteem, and perhaps learn to use humor in a social setting. Through close observation and lab experimentation, this high-energy comedy class will offer electrifying lessons on humor such as impersonations, prank humor, slapstick, comic strips, improv, character voices, ventriloquism, and witty situational. All kids leave with a humor themed souvenir. Location: Spring Avenue Recreation Center. Min/Max: 7/18. (dm)

#/Link	Day	Date	Time	R/NR	
125684	Tu	6/14	6:15-7:15pm	\$29/\$44	●

LISA LOMBARDI

The Thrills and Chills of Ice Cream

Ages 6-13

Making and eating ice cream is a tasty way to introduce early chemistry teachings to children and helps build self-esteem. Kids can become experts on this billion-dollar industry as they make a batch of homemade spring-themed ice cream. We will explore the science and history of beloved amusement park treats, Dippin' Dots, waffle cones, and the first novelty ice cream bar, the Eskimo Pie. Then, we'll sit down for the most outrageous ice cream eating contest in town. Location: Spring Avenue Recreation Center. Min/Max: 7/18. (dm)

#/Link	Day	Date	Time	R/NR	
126414	W	7/6	4:30-5:30pm	\$29/\$44	●

LISA LOMBARDI

Back to School Bubbly Bash

Ages 6-13

Kids will close out summer by brewing homemade root beer at the ultimate Back to School Bubbly Bash. Attendees will get to cast their vote for Best Root Beer as they taste test a flight of 4 different unidentified root beer brands. Then, kids will complete their experience by preparing their own customized root beer float with festive fixings. The class will finish up with a lesson on how to set intentions to feel positive while returning to the upcoming school year. Location: Spring Avenue Recreation Center. Min/Max: 7/15. (dm)

#/Link	Day	Date	Time	R/NR	
126415	Tu	8/23	6-7pm	\$29/\$44	●

LISA LOMBARDI

Autumn Extravaganza Slime

Ages 6-13

Kids will have the slime of their life coloring slime the palette of autumn leaves. Each participant will create slime that is either gold, red, or orange, the colors which make autumn spectacular. Then we will scent it like pumpkin pie, marshmallow fireside, maple bacon donuts, or caramel apples. Kids keep the slime they create. Location: Main Street Recreation Center. Min/Max: 8/15. (dm)

#/Link	Day	Date	Time	R/NR	
126416	M	9/12	6-7pm	\$29/\$44	●



Mini Actors

Ages 6-8

Does your child love to perform? This class will teach them the fundamentals of acting, movement, and many other theatre techniques. Each class will be filled with games and exercises to encourage creativity and engagement. A short performance on the last day of class will give the kids their time to shine. Location: Main Street Recreation Center. Min/Max: 4/20. (cs)

#/Link	Day	Date	Time	R/NR
125645	M	6/6-6/27	2-2:45pm	\$40/\$55 ●
125646	M	7/11-8/1	2-2:45pm	\$40/\$55 ●

Theatre Prep

Ages 9-15

Working with scripts and other production materials, students will learn short acting scenes from a variety of theatrical numbers. This class will work with games and exercises, all geared towards getting your actor ready for the stage. The session will end with a performance for family and friends. Location: Main Street Recreation Center. Min/Max: 4/20. (cs)

#/Link	Day	Date	Time	R/NR
125647	M	6/6-6/27	4-4:45pm	\$40/\$55 ●
125648	M	7/11-8/1	4-4:45pm	\$40/\$55 ●

Theatre Improv & Games

Ages 8-13

Improvisational theatre is a form of acting in which most or all of what is performed is unplanned or unscripted. Participants will learn fundamentals of improvisation and work together to create fun and spontaneity. This class will be full of acting games, high energy movement, and creative techniques to expand your imagination and comfort level. Location: Main Street Recreation Center. Min/Max: 4/20. (cs)

#/Link	Day	Date	Time	R/NR
125649	M	6/6-6/27	3-3:45pm	\$40/\$55 ●
125650	M	7/11-8/1	3-3:45pm	\$40/\$55 ●

Stage Makeup Workshop

Ages 8-14

Learn how to transform actors into characters using stage makeup. Students will learn theatrical makeup application and safety along with tips and tricks to making it look realistic on stage. Each workshop will focus on a different theme. All materials are supplied. Location: Spring Avenue Recreation Center. Min/Max: 5/15. (cs)

#/Link	Day	Date	Time	R/NR
Old Age				
126340	W	6/22	6:30-8pm	\$50/\$65 ●
Scars and Bruises				
126341	W	7/20	6:30-8pm	\$50/\$65 ●
Zombie				
126342	W	8/10	6:30-8pm	\$50/\$65 ●





SHINING STAR PRODUCTIONS

Young Actors Club

Ages 6-8

This fast-paced drama class is a new and exciting adventure into the imagination with changing themes, music, and games. You'll even learn a short song and a new joke every week. Learn theatre terms, enhance spontaneity, build self-esteem, and have a blast. Themes for upcoming classes will be announced on a weekly basis. Every session is different, and most themes are not repeated for two years. Location: Main Street Recreation Center. Min/Max: 6/10. No class 7/4. (cs)

#/Link	Day	Date	Time	R/NR	
125035	M	6/13-7/11	6-6:45pm	\$45/\$60	●
125036	M	7/18-8/15	6-6:45pm	\$50/\$65	●

SHINING STAR PRODUCTIONS

LOL Improv

Ages 9-13

If you enjoy comedy, laughing, having a good time, or acting, this class is for you. You'll create characters, play awesome theatre games, improvise, and develop social skills as you learn about the creative art of improvisation and comedy. Location: Main Street Recreation Center. Min/Max: 6/10. No class 7/4. (cs)

#/Link	Day	Date	Time	R/NR	
125037	M	6/13-7/11	7-7:45pm	\$45/\$60	●
125038	M	7/18-8/15	7-7:45pm	\$50/\$65	●

Play outdoors!

Maryknoll Park Disc Golf Course

A 9-hole disc golf course is available at Maryknoll Park, 845 Pershing Avenue.

You can bring your own discs or they are available to rent at the Maryknoll Clubhouse for \$5 each during mini golf hours.



See the Disc Golf Ace Race on page 11!

Community CPR/First Aid

Ages 15 and up

This Jeff Ellis and Associates certification class includes training and certification for CPR and AED use for adults, children, and infants along with first aid techniques. A written test is required to pass the course. Location: Spring Avenue Recreation Center. Min/Max: 5/20. (cs)

#/Link	Day	Date	Time	R/NR	
125977	W	6/15	5-7pm	\$30/\$45	●
125978	Tu	7/12	5-7pm	\$30/\$45	●
125979	Tu	8/2	5-7pm	\$30/\$45	●

GLEN ELLYN THEATRE COMPANY PRESENTS:

The Addams Family Young@Part

Ages 7-18

Glen Ellyn Theatre Company is a recreational theatre program that creates quality theatre programs with young actors. Participants observe the process of producing a show from start to finish, learn songs and dance routines, create props, and more.

This season's performance is Addams Family Young@Part. Wednesday Addams, the ultimate princess of darkness, has grown up and fallen in love with a sweet, smart young man from a respectable family whom her parents have never met. She confides in her father and begs him not to tell her mother. Now, Gomez Addams must do something he's never done before – keep a secret from his beloved wife, Morticia. Everything will change for the whole family on the fateful night they host a dinner for Wednesday's "normal" boyfriend and his parents.

Not an actor, but still want to participate? Volunteers are needed to help build sets, create costumes, and more. If you are interested, email cshingler@gepark.org.



Auditions: August 24 and August 25 at Main Street Recreation Center. Registration is required and can be completed online at gepark.org/register (type "Addams" into the activity search bar). There is no fee to audition. ●

Casting & Participation Fee: All who are cast after auditions must pay a participation fee (\$250 for residents, \$275 for nonresidents) prior to the first rehearsal. Costumes will need to be provided by participants closer to the performances.

Rehearsals: August 31 to November 3 at Main Street Recreation Center from 5:30 to 8pm on Wednesdays and Thursdays. A call sheet will be sent out weekly. Tech week will take place from November 7 to November 10 from 5 to 8pm at the Oakbrook Terrace Park District and will require all actors. A parent and cast meeting will take place after rehearsals begin.

Performances: Friday, November 11 through Sunday, November 13. Tickets will be sold at an additional cost. (cs)

Audition Workshop: Addams Family Young@Part

Ages 7-18

This is a supplemental class for those preparing to audition for the Addams Family Young@Part production. Amateur actors will learn all about the audition process as well as techniques to use when you try out for a theatre production. This workshop is designed to help our actors feel more confident and prepared. Location: Main Street Recreation Center. Min/Max: 6/20. (cs)

#/Link	Day	Date	Time	R/NR
126343	W	8/10	6-8pm	\$10/\$15 ●
126344	Th	8/18	5-7pm	\$10/\$15 ●



SUMMER 2022 • 37

● Registration open now ● Registration opens at 9am June 4

Adventure Time

BEFORE & AFTER SCHOOL CARE

The Adventure Time program is located at Forest Glen and Churchill Elementary Schools. Adventure Time staff provide supervised recreational activities, allowing time outside and indoors for students to unwind or gear up with sports, arts & crafts, and games. Quiet time is available for homework and relaxing with friends new and old.

Registration

Registration will be for the complete school year (August-June). Children may be signed up for 3, 4 or 5 days a week; mornings, afternoons or both! Parents, you may choose which days of the week you wish to use. A non-refundable \$50 deposit is required to register. Please note, children in kindergarten are welcome to enroll, but only for the AM session if they attend AM kindergarten or the PM session if they attend PM kindergarten.

FOREST GLEN ELEMENTARY SCHOOL

Address: 501 Elm St., Glen Ellyn • Min/Max per Day: 15/25

Days Per Week	7am-8:30am	3:30pm-6pm	7am-8:30am & 3:30pm-6pm	Deposit #/Link
3 Days	\$122	\$204	\$302	
4 Days	\$163	\$272	\$403	126561 •
5 Days	\$204	\$340	\$504	

CHURCHILL ELEMENTARY SCHOOL

Address: 240 Geneva Rd., Glen Ellyn • Min/Max per Day: 15/25

Days Per Week	7am-8:30am	3:30pm-6pm	7am-8:30am & 3:30pm-6pm	Deposit #/Link
3 Days	\$122	\$204	\$302	
4 Days	\$163	\$272	\$403	126560 •
5 Days	\$204	\$340	\$504	

Parent Information Packet

A program information packet will be emailed by the first week of August. For more information, contact Jeannie Robinson at jrobinson@gepark.org or (630) 942-7267.

Payments

This program is billed monthly via an Electronic Fund Transfer (Visa, MasterCard, AMEX or Discover Card) for nine months during the school year. Payments will be made on the 1st of each month, with the first month due September 1 and concluding with the last payment on May 1.

Important Dates

START DATE: First regular day of school (D41 calendar)

END DATE: Final day classes are in session (D41 calendar)

ADVENTURE TIME WILL NOT MEET:

Adventure Time will not meet on legal public holidays as determined by the District 41 school calendar or over Thanksgiving, Winter, and Spring breaks.

EARLY DISMISSAL & TEACHER INSTITUTE DAYS:

On early dismissal days, children will be dismissed to the Adventure Time room. On Teacher Institute Days Adventure Time will be operating at Forest Glen only (Churchill children should be dropped off at Forest Glen on these days) and will be available from 7am-6pm. Please provide a lunch. Special events and activities are planned on SIP and Teacher Institute Days; more information will be provided in each month's newsletter.

WHAT TO BRING:

Provide a snack for both AM and PM participants; time will be allotted for children to eat before and after school. (jr)



adult, aoa and senior interest

who to contact:

- (cs) Chad Shingler, cshingler@gepark.org
- (ch) Christine Hartnett, chartnett@gepark.org
- (dm) David MacDonald, dmacdonald@gepark.org
- (sl) Stacey Lim, slim@gepark.org





ADULT INTEREST

adult interest

CHERYL RAUSCH ART

Creating Landscapes in Watercolor

Ages 18 and up

Find out how to work with and enjoy the flexible and beautiful watercolor medium. Using tips and techniques acquired throughout this class, you will create your own landscape painting. All supplies will be provided. Location: Spring Avenue Recreation Center. Min/Max: 5/15. (cs)

#/Link	Day	Date	Time	R/NR
125976	Sa	7/23	10am-12pm	\$43/\$58 ●

Learn to Crochet

Ages 14 and up

Participants will learn about the different types of yarns, crochet hooks, and basic notions of crocheting. The instructor will lead activities to become comfortable holding a crochet hook and yarn. The class will focus on learning the basic stitches of chain, single crochet, and double crochet. After learning the stitches, we will use them to create a design of your choice. Students need a skein of solid, light-colored #4 medium-weight yarn and size US H-8 (5mm) crochet hook for the first class. Location: Spring Avenue Recreation Center. Min/Max: 3/8. (dm)

#/Link	Day	Date	Time	R/NR
126422	Th	6/16-6/30	5:30-7:30pm	\$90/\$105 ●

The High-Low Wine Tasting Game

Ages 21 and up

Join certified sommelier Jane of See Jane Drink Wine and put your wine tasting skills to the test and decipher the high- versus low-priced wines in a blinded tasting game. We'll explore 3 different wine varieties discussing what makes a wine high quality and drives that bigger price tag. It's a great way to explore new wines at different price points to fit your weekday wine picks as well as those more special occasion wines. Location: Lake Ellyn Boathouse. Min/Max: 6/50. (dm)

#/Link	Day	Date	Time	R/NR
126423	W	6/29	6:30-8pm	\$50/\$65 ●

Old World-New World Wine Tasting Game

Ages 21 and up

Local sommelier Jane of See Jane Drink Wine will lead the group in an interactive blinded tasting comparing Old World and New World wines. We'll taste three different varieties, one from the New World and two from the Old World, learning the key indicators on how to determine which ones are which so you can impress your friends at your next dinner party. This event is a great way to taste new wines and learn about what wine style is your favorite. Location: Lake Ellyn Boathouse. Min/Max: 6/50. (dm)

#/Link	Day	Date	Time	R/NR
126424	W	8/3	6:30-8pm	\$50/\$65 ●

SUMMER 2022 • 40

● Registration open now ● Registration opens at 9am June 4

DANCIN' FEET

West Coast Swing

Ages 18 and up

West Coast Swing (WCS) is a very popular form of swing dancing that has spread across the world. Although it's history and roots come from Lindy Hop, part of the appeal of WCS is that it is an adaptable dance; it can be danced to a variety of musical styles and genres. In addition, the dance itself creates room for improvisation and interaction between the partners like a conversation. Location: Spring Avenue Recreation Center. Min/Max: 4/10. (cs)

#/Link	Day	Date	Time	R/NR	
126017	W	5/18-6/22	7-8pm	\$60/\$75	●
126018	W	7/13-8/17	7-8pm	\$60/\$75	●

DANCIN' FEET

Swing Dance

Ages 18 and up

Swing dance, known also as Jitterbug and East Coast Swing, is a very popular and versatile dance. This class will teach you how to dance swing with ease and confidence. Basic lead and follow techniques will be covered in addition to many popular patterns. The class is open to couples, as well as singles. Location: Spring Avenue Recreation Center. Min/Max: 4/10. (cs)

#/Link	Day	Date	Time	R/NR	
126020	Th	5/19-6/23	6:30-7:30pm	\$60/\$75	●
126021	Th	7/14-8/18	6:30-7:30pm	\$60/\$75	●

Seated Tai Chi

Age 18 and up

Clear-mindedness and better health come from the practice of Tai Chi. All ages can benefit from breath work, balancing both sides of the body, and improved upper body strength and flexibility. Taught by Yvonne Czarniak, certified instructor in Tai Chi Chuan. Location: Wheaton Park District Mary Lubko Center. Min/Max: 1/3. (dm)

#/Link	Day	Date	Time	R/NR	
126431	Th	6/2-7/7	10-11am	\$57/\$71	●
126432	Th	7/21-8/25	10-11am	\$57/\$71	●

Adult Tap

Ages 18 and up

Tap dance is an American art form that is not only entertaining to watch (and hear) but it's fun (and easy) to learn. Tap teaches rhythm, improves balance and provides a great workout. This class includes warm-ups, basic steps, and traveling combinations. Tap shoes are required and available for purchase through the Park District. Contact Chad Shingler at cshingler@gepark.org for questions regarding shoe purchase. Location: Spring Avenue Recreation Center. Min/Max: 4/20. No class 7/4. (cs)

#/Link	Day	Date	Time	R/NR	
125980	M	6/20-7/25	7-8pm	\$50/\$65	●

Adult Ballet

Ages 18 and up

A perfect class for those getting started or revisiting ballet again as an adult. This class will focus on alignment, foundation of technique, and movement quality. Location: Spring Avenue Recreation Center. Min/Max: 4/20. No class 7/7. (cs)

#/Link	Day	Date	Time	R/NR	
125720	Th	6/23-7/28	7-7:45pm	\$50/\$65	●

DUNHAM WOODS FARM

Adult Horsemanship

Ages 18 and up

Join in the fun at Dunham Woods Farm with beginning riding lessons. You'll learn all about the proper ways to groom, tack, and handle horses. In the saddle you will learn the basics of riding at the walk and trot. Lessons will be held in our indoor arena during inclement weather. Riders should wear jeans or Jodhpur pants and hard soled riding or hiking boots with a small, low heel. Bring an approved riding helmet or bicycle helmet. Make up class held at the end of the six weeks. Location: Dunham Woods Farm, Elgin. Min/Max: 1/4. (dm)

Registration closes five days in advance of start date

#/Link	Day	Date	Time	R/NR	
125619	W	6/1-7/6	7-8pm	\$180/\$250	●
126419	W	8/24-9/28	7-8pm	\$180/\$250	●

Community CPR/First Aid

Ages 15 and up

This Jeff Ellis and Associates certification class includes training and certification for CPR and AED use for adults, children, and infants along with first aid techniques. A written test is required to pass the course. Location: Spring Avenue Recreation Center. Min/Max: 5/20. (cs)

#/Link	Day	Date	Time	R/NR	
125977	W	6/15	5-7pm	\$30/\$45	●
125978	Tu	7/12	5-7pm	\$30/\$45	●
125979	Tu	8/2	5-7pm	\$30/\$45	●

Mindfulness Meditation

Ages 18 and up

Train your mind the way you train your body for the perfect way to stay centered. Learn centuries-old meditation techniques and breathing exercises from Chopra Center certified instructor Stephanie Frantz to reduce anxiety and stress and increase your overall health and sense of well-being. Location: Main Street Recreation Center. Min/Max: 3/15. No class 7/4. (dm)

#/Link	Day	Date	Time	R/NR	
126433	M	6/20-7/18	7-7:50pm	\$70/\$85	●

ROC SOLID OBEDIENCE

People Training Dogs

Ages 18 and up

Does your dog take you for a walk or run away when you call them? This educational class teaches you how to recognize and control problems before they become unmanageable. Your dog learns to heel, sit, down, stay, stand for a veterinary exam, and come when called. All dogs are required to be up to date on immunizations (Rabies, Parvo, and Distemper) with a negative stool sample checked no more than two weeks prior to the first class and documented by your pet's veterinarian. Please do not bring your dog to the first day of class. Dogs five months or older are welcome. First three classes are mandatory. Location: Wheaton Park District Community Center. Min/Max: 1/3. (dm)

#/Link	Day	Date	Time	R/NR	
126428	Su	7/10-8/14	9-11am	\$140/\$175	●
126429	W	7/13-8/17	6-8pm	\$140/\$175	●

ROC SOLID OBEDIENCE

People Training Dogs Continued

Ages 18 and up

This five-week class is designed to strengthen your dog's on-leash skills and prove basic level obedience commands already learned in the previous class. This class will begin the move toward off-leash control by adding more distance, duration, and distractions to your stationary exercises. New commands will include stand, formal finish, moving sit and down, and hand signals for commands. This class is only open to Roc Solid Obedience clients that have completed our basic six-week class. Location: Wheaton Park District Community Center. Min/Max: 1/3. (dm)

#/Link	Day	Date	Time	R/NR	
126430	Th	7/14-8/11	6:15-7:45pm	\$115/\$144	●

BFF DOG ACADEMY

Puppy Class

For puppies ages 8 weeks-6 months

Bond and learn how to communicate with your puppy. This is also an opportunity for your pup to socialize with other pups. You receive information about housetraining, grooming, chewing, and jumping and basic obedience. Core skills covered include come when called, walk with a loose leash, sit, down, and stay. AKC S.T.A.R. certification evaluation given during class. Fifteen minutes of puppy socialization time included. Handler must be 18 years of age or older. Location: Main Street Recreation Center. Min/Max: 2/6. (ch)

#/Link	Day	Date	Time	R/NR	
126261	Th	7/7-7/28	6-6:45pm	\$165	●
126262	Sa	7/9-7/30	9-9:45am	\$165	●
126266	Th	8/4-8/25	6-6:45pm	\$165	●
126268	Sa	8/6-8/27	9-9:45am	\$165	●
126267	Th	9/15-10/6	6-6:45pm	\$165	●
126269	Sa	9/17-10/8	9-9:45am	\$165	●

BFF DOG ACADEMY**Reactive Class**

For dogs ages 6 months and up

We will train your dog within a defined “safe space,” and help you determine if your dog is reactive or afraid by teaching you how to read your dog and communicate positively using the core obedience skills. The class will also address individual problem behaviors such as nipping or jumping. Note, this class is for dogs that are considered “reactive” not aggressive. Handler must be 18 years of age or older. Location: Main Street Recreation Center. Min/Max: 2/5. (ch)

#/Link	Day	Date	Time	R/NR	
126263	Sa	7/9-7/30	10-10:45am	\$189	•
126270	Sa	8/6-8/27	10-10:45am	\$189	•
126271	Sa	9/17-10/8	10-10:45am	\$189	•

BFF DOG ACADEMY**General Obedience Class**

For dogs ages 6 months and up

Learn to read your dog and communicate positively by using the core obedience skills: focus/watch me, come when called, walk with a loose leash, sit, down, stay, and go to bed/lay down. The class will also address problem behaviors. Handler must be 18 years of age or older. Location: Main Street Recreation Center. Min/Max: 2/5. (ch)

#/Link	Day	Date	Time	R/NR	
126260	Th	7/7-7/28	7-7:45pm	\$165	•
126264	Th	8/4-8/25	7-7:45pm	\$165	•
126265	Th	9/15-10/6	7-7:45pm	\$165	•



Spring Avenue

Dog Park

WHERE PETS COME TO PLAY.

Unleash some fun at this popular outdoor park where dogs can exercise, play, and socialize off-leash. Your four-legged friend will pawsitively love it.

Starting at \$35 for residents

[MEMBERSHIP OPTIONS & MORE »](#)

active older adult & senior interest

The Gazette

Subscribe to receive The Gazette, a newsletter for seniors and active older adults, to your home! This FREE printed newsletter is mailed out quarterly to subscribers ages 60 and older. Please be sure to include your email address if you would also like to receive each edition via email. Questions? Please contact David MacDonald at dmacdonald@gepark.org or (630) 942-7266.

Let's Par Tee Luncheon

Ages 50 and up

Grab your friend and best golf attire! Meet over at Holes & Knolls Miniature Golf Course for a round of 18. Raffle prizes for those who attend. Awards for the lowest score, highest score, and most hole in ones. Fee includes a round of miniature golf and lunch. Lunch includes chips and a sandwich. Lunch will be served with an Arnold Palmer. Location: Maryknoll Park. Min/Max: 10/40. (dm)

#/Link	Day	Date	Time	R/NR
126421	Tu	7/12	11:30am-2pm	\$10/\$12 ●

Friday Night Senior Bingo

Ages 55 and up

Let's get together for bingo! Join us every Friday from 6-8pm at Ackerman Sports & Fitness Center for Senior Bingo. Enjoy several rounds of bingo while socializing with the community. Prizes will be awarded each night, including a grand prize at the end of the last game. No registration required. \$1 per card. (sl)

Donuts and Bingo *Free!*

Ages 55 and up

Play bingo at Main Street Recreation Center on the 2nd Thursday of each month. Visit with friends over coffee and donuts while playing everyone's favorite game. Bingo will be free to play, and games will start at 10:30am. One bingo card per participant. Coffee, donuts, and bingo cards will be provided, and prizes will be awarded to winners. Offered in partnership with Glen Ellyn Public Library. Min/Max: 5/40. (dm)

AARP Driver Safety

Ages 55 and up

Become a safer driver by sharpening your defensive driving skills. Our class combines discussion and text. Completion of this program entitles you to a reduction on your automobile insurance premium. Payment of \$20 for current AARP members and \$25 for non-members is payable to AARP at the first meeting (cash or check only). No refund after attending the first meeting. Location: Main Street Recreation Center. Min/Max: 5/25. (dm)

#/Link	Day	Date	Time	R/NR
126044	W-Th	6/22-6/23	9am-1pm	See description ●

ILLINOIS SECRETARY OF STATE

Rules of the Road *Free!*

Ages 65 and up

The Rules of the Road Review Course is designed to give drivers – especially senior citizens and persons with disabilities – the knowledge and confidence needed to renew or obtain a driver's license. The review course combines an explanation of the driving exam with a practice written exam. Location: Main Street Recreation Center. Min/Max: 5/20. (dm)

#/Link	Day	Date	Time	R/NR
125685	F	6/17	10am-12pm	Free w/registration ●

SARC Senior Clubs

SARC Senior Clubs are programs for all those over the age of 60. The clubs will meet at Spring Avenue Recreation Center, 185 Spring Avenue. Registration is required online or in-person to attend club meetings. (dm)

Check out the new nature-based walking club which can be found under nature programs.

Art Club

Art club will allow you to find out where unique talents lie and explore new avenues of enrichment and expression. The club will be led by an experienced local artist.

#/Link	Day	Date	Time	R/NR	
126471	Tu	7/26	10:30am-12pm	\$7/\$10	●
126472	Tu	8/23	10:30am-12pm	\$7/\$10	●

Card Club *Free!*

Gather with other card game enthusiasts to play your favorite games or learn new ones. All levels of card players are welcome. New games played each week with all card decks being provided.

#/Link	Card Game	Day	Date	Time	
126438	Bridge	W	6/8	9:30-11:30am	●
126439	Pinochle	W	6/22	9:30-11:30am	●
126440	Canasta	W	7/13	9:30-11:30am	●
126441	Bridge	W	7/27	9:30-11:30am	●
126442	Pinochle	W	8/10	9:30-11:30am	●
126443	Canasta	W	8/24	9:30-11:30am	●
126444	Bridge	W	9/14	9:30-11:30am	●
126445	Pinochle	W	9/28	9:30-11:30am	●

Poker Club *Free!*

Put on your poker face and join us Wednesday afternoons for poker.

#/Link	Day	Date	Time	
126454	W	6/8-8/31	1-3pm	●

Book Club *Free!*

Are you an avid reader and enjoy discussing the books you read? Join our monthly book club. Refreshments and snacks will be provided. Books can be checked out from the Glen Ellyn Public Library.

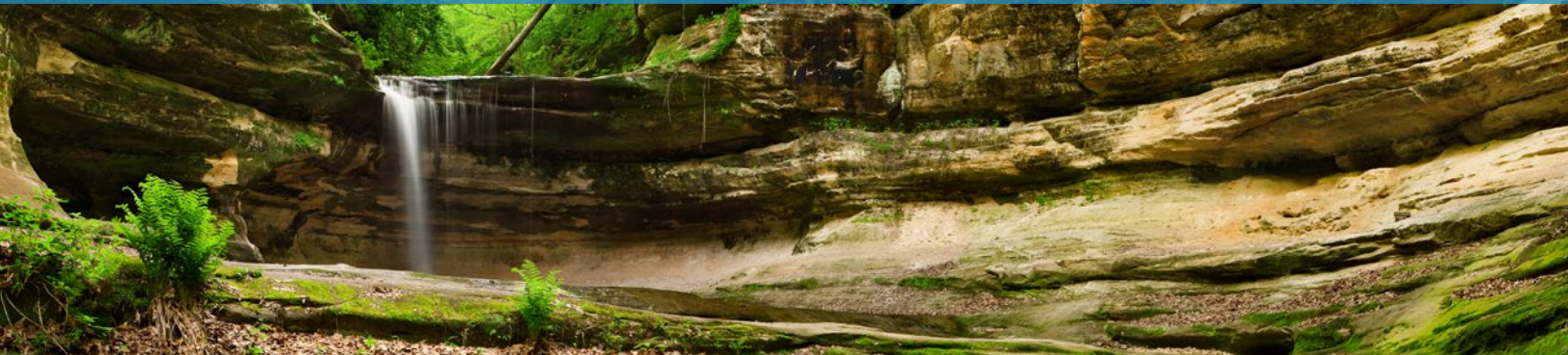
#/Link	Day	Date	Time	
"Ask Again, Yes" by Mary Beth Keane				
126434	M	6/20	10-11am	●
"Harlem Shuffle" by Colson Whitehead				
126435	M	7/18	10-11am	●
"Braiding Sweetgrass" by Robin Wall Kimmerer				
126436	M	8/15	10-11am	●
"The Maid: A Novel" by Nita Prose				
126437	M	9/19	10-11am	●

Social Club *Free!*

Each senior social club offers the opportunity to play games, learn something new, or even test your knowledge at themed trivia. Coffee will be provided.

#/Link	Theme	Day	Date	Time	
126447	Crosstown Classic	Th	6/16	9:30-11:30am	●
126448	Chocolate Day	Th	7/7	9:30-11:30am	●
126449	Luau in July	Th	7/21	9:30-11:30am	●
126450	Beach Day	Th	8/4	9:30-11:30am	●
126451	Elvis Week	Th	8/18	9:30-11:30am	●
126452	Bear Down	Th	9/8	9:30-11:30am	●
126453	Oktoberfest	Th	9/22	9:30-11:30am	●

day trips



Police Tour & Talk *Free!*

Ages 50 and up

Attend an informative talk with Officer Joe Nemchock about current “scams” that are being seen throughout the area. This presentation will include different types of frauds including, but not limited to, IRS or electrical company phone scams, banking emails, and fictitious family emergency calls. Following the talk all participants will be taken on a tour of the Glen Ellyn Police Department. Coffee and light snacks will be served. Bus transportation is offered to all registered participants and will depart at 9:45am from Spring Avenue Recreation Center. Min/Max: 4/14. (dm)

#/Link	Day	Date	Time	R/NR
125975	Tu	6/14	9:45-11:30am	Free w/registration ●

St. Charles Paddlewheel Riverboat Cruise

Ages 21 and up

Let's cruise the scenic Fox River on our own private paddlewheel riverboat charter. Our route will follow some of the most beautiful sections on the river and includes a boxed lunch on board. Please select either turkey or ham sandwich when registering. Fee includes transportation, lunch, and private riverboat charter. Riverboat Cruise will take place from 11am-12pm. Departs from Maryknoll Park. Min/Max: 8/15. (dm)

Register by 6/12

#/Link	Day	Date	Time	R/NR
126468	W	7/13	10am-1pm	\$69/\$74 ●

Glen Ellyn Cruisin' Crew

Ages 55 and up

Join us as we venture out to different restaurants and new locations each month to enjoy time together. This is a great chance to socialize and meet new people in the area. Take a ride on the bus for just \$5. Participants are responsible for all costs at the different locations. Registration is required for all attendees. Bus will depart from Spring Avenue Recreation Center. Min/Max: 4/14. (dm)

#/Link	Location	Day	Date	Time	
125967	Ken's Schaumburg Restaurant (Schaumburg)	W	6/15	11:30am-3pm	●
126425	Preservation (Geneva)	W	7/20	11:30am-3pm	●
126426	Brandt's of Palatine (Palatine)	W	8/17	11:30am-3pm	●
126427	Raymes (Lisle)	W	9/21	11:30am-3pm	●

Photo courtesy of Village of Glen Ellyn



Photo courtesy of stcriverboats.com



Air Classics Museum of Aviation

Ages 18 and up

Come witness for yourself the beauty, power, and grace of the magnificent aircrafts that made history. The guided tour will teach you about the aircrafts and the pilots that flew the planes. Experience the drama of their heroic life and death struggles. After the tour completes, we'll head over to the Sugar Grove Café for a delicious lunch. Day trip fee includes transportation, guided tour, and lunch. Departs from Spring Avenue Recreation Center. Min/Max: 4/14. (dm)

Register by 7/8

#/Link	Day	Date	Time	R/NR	
126469	F	7/29	9:30am-3pm	\$40/\$50	●

Guided Hike & Lunch at Starved Rock

Ages 18 and up

Jump on the Park District bus and we'll head down to the most visited State Park in Illinois. A guided hike is the best way to learn about Starved Rock State Park and everything it has to offer. Take in the natural beauty of the park while learning about the geology and cultural history of Starved Rock. Brown bag lunch served with sandwich, fruit, and water. Departs from Maryknoll Park. Min/Max: 6/12. (dm)

Register by 8/12

#/Link	Day	Date	Time	R/NR	
126470	F	8/26	8:30am-3pm	\$40/\$50	●

Anderson Japanese Gardens

Ages 21 and up

Surround yourself with nature in an outdoor setting that inspires the mind and energizes the soul. Upon arrival you'll enjoy an artisan boxed lunch prepared by Fresco at the Gardens. After lunch participants will enjoy a docent-guided tour along the beautifully manicured trails of the gardens. There will be time for a quick stop at the gift shop before heading home. Fee includes motor coach transportation, guided tour, and lunch buffet. Departs from Elmhurst Park District. Min: 10/20. (dm)

Register by 9/1

#/Link	Day	Date	Time	R/NR	
126467	F	9/16	10:30am-5pm	\$84/\$89	●

Chicago Pizza Tour

Ages 21 and up

We'll be stopping at three pizza places around Chicago on this educational and tasty tour. Our first stop will be Pizano's in the Loop. Next is Labriola on the Magnificent Mile for deep dish pan style pizza. Our last stop is Flo & Santo's in the South Loop for thin crust tavern style pizza and dessert. Flo's will serve up s'mores pizzas for dessert. Fee includes transportation, guide, pizza and a soft drink at each stop, and dessert. Departs from Maryknoll Park. Min/Max: 8/15. (dm)

Register by 9/12

#/Link	Day	Date	Time	R/NR	
126466	W	9/28	9:15am-4:15pm	\$84/\$89	●

Dreamgirls at Paramount Theatre

Ages 21 and up

It's the 1960s where the sound of Motown is on the rise. Meet the Dreamettes, Effie, Deena and Lorrell, three women trying to break their way onto the music scene. When car salesman Curtis Taylor Jr. signs the three singers to a record label, he sets in motion a series of events that will forever change their lives, for better and for worse. Join the Dreamgirls as they navigate the highs and lows of life, love, and fame. Fee includes transportation and main floor seating at The Paramount Theatre in Aurora. Departs from Maryknoll Park. Min/Max: 5/7. (dm)

Register by 9/9

#/Link	Day	Date	Time	R/NR	
126463	W	10/5	12:30-4:30pm	\$49/\$54	●

Four Winds Casino

Ages 21 and up

Join us as we head to the Four Winds Casino in New Buffalo, Michigan. It has 3,000 of the most sought-after slots ranging in denominations from 1 cent to \$100. Fee includes motor coach transportation, \$10 food credit which can be used toward food purchases, and \$15 instant slot credit. Be sure to bring a valid (non-expired) driver's license or state ID card with you on the day of the trip. If you have a player's card, please call to include the number with your registration. Departs from Elmhurst Park District. Min/Max: 10/20. (dm)

Register by 9/27

#/Link	Day	Date	Time	R/NR	
126465	Tu	10/25	9am-5pm	\$49/\$54	●



sports

who to contact:

- (bt) Brad Thomas, bthomas@gepark.org
- (ch) Christine Hartnett, chartnett@gepark.org
- (cb) Clint Babicz, cbabicz@gepark.org
- (dm) David MacDonald, dmacdonald@gepark.org
- (sl) Stacey Lim, slim@gepark.org





early childhood sports

ALL STAR SPORTS

Adult/Tot Super Sports Jr.

Ages 2-3 with adult

Enjoy this opportunity to bond and have fun together while learning a variety of sports. Adult/Tot Sports offers a great opportunity to improve the simple motor skills of catching, throwing, batting, shooting, passing, and running, and also improves hand-eye coordination. Adults participate with their child playing soccer, basketball, hockey, T-Ball, and other sports. Equipment is provided. Location: Main Street Recreation Center. Min/Max: 5/16. No class 7/2. (ch)

#/Link	Day	Date	Time	R/NR	
125008	W	6/15-7/27	4:30-5:15pm	\$98/\$147	●
126122	Sa	8/6-8/20	9:15-10am	\$42/\$63	●
126123	Tu	8/30-10/18	11:15am-12pm	\$112/168	●
126120	W	8/31-10/19	9:15-10am	\$112/168	●
126121	Sa	8/27-10/15	9:15-10am	\$112/168	●

Ackerman Adult and Tot Sports

Ages 2-5 with adult

Adults play an integral part in helping their tots develop basic sports movement and motor skills. Motor skills activities focus on hand-eye and hand-foot coordination. Sports equipment and instruction are provided to help guide your child through an introduction to organized sports. Adult participation is required. Location: Ackerman SFC. Min/Max: 5/30. (sl)

#/Link	Day	Date	Time	R/NR	
125149	Sa	6/18-7/9	8:45-9:30am	\$45/\$60	●
126496	Sa	7/28-8/13	8:45-9:30am	\$45/\$60	●
126498	Sa	8/27-9/17	8:45-9:30am	\$45/\$60	●

ALL STAR SPORTS

Super Sports

Ages 3-7

Designed for the child who wants to “take a shot” at different sports! Kids stay active and work on balance, motor skills and hand-eye coordination while learning the rules of baseball, football, floor hockey, soccer, basketball and more. Each class focuses on a new sport, basic rules, and mechanics while games are played that keep everyone moving. There’s no reason to pick a sport when they can play them all. Equipment is provided. Location: Main Street Recreation Center. Min/Max: 5/16. No class 7/4. (ch)

#/Link	Day	Date	Time	R/NR	
Ages 3-4					
125002	Th	6/9-7/28	3:45-4:30pm	\$112/\$168	●
125005	F	6/10-7/29	1:45-2:30pm	\$112/\$168	●
124998	M	6/13-8/1	9:15-10am	\$98/\$147	●
126112	M & W	8/3-8/17	10-10:45am	\$70/\$105	●
126115	Tu & Th	8/2-8/18	5:15-6pm	\$84/\$126	●
126116	Th	8/25-10/13	10-10:45am	\$112/\$168	●
126119	F	8/26-10/14	2-2:45pm	\$112/\$168	●

Ages 4-6

125003	Th	6/9-7/28	4:30-5:30pm	\$112/\$168	●
125004	F	6/10-7/29	12:45-1:45pm	\$112/\$168	●
124999	M	6/13-8/1	10-11am	\$98/\$147	●
126113	M & W	8/3-8/17	10:45-11:45am	\$70/\$105	●
126114	Tu & Th	8/2-8/18	4:15-5:15pm	\$84/\$126	●
126117	Th	8/25-10/13	10:45-11:45am	\$112/\$168	●
126118	F	8/26-10/14	1-2pm	\$112/\$168	●

Ages 5-6

125000	Tu	6/14-7/26	2:45-3:30pm	\$98/\$147	●
------------------------	----	-----------	-------------	------------	---

Ages 6-7

125001	Tu	6/14-7/26	3:30-4:15pm	\$98/\$147	●
------------------------	----	-----------	-------------	------------	---



ALL STAR SPORTS

Basketball Jr. & Basketball Skills

Ages 3-10

Designed to teach the game of basketball at a basic level while making sure the players stay active and engaged. Fun, basketball-like games will be played to teach the importance of each skill. Trainers focus on basic mechanics to build confidence then add larger challenges as players progress. We will work on dribbling with each hand, passing and shooting technique, and understanding basic offense and defense. Basketball Skills is the next level of this class and will build upon the basic skills learned in the Basketball Jr. class. Location: Main Street Recreation Center. Min/Max: 5/16. No class 7/4. (ch)

#/Link	Age	Day	Date	Time	R/NR
Basketball Jr.					
125016	3-4	M	6/13-8/1	11-11:45am	\$98/\$147 ●
125014	3-4	Tu	6/14-7/26	9:15-10am	\$98/\$147 ●
125017	4-6	M	6/13-8/1	11:45am-12:45pm	\$98/\$147 ●
125015	4-6	Tu	6/14-7/26	10-11am	\$98/\$147 ●
126127	3-4	M/W	8/3-8/17	11:45am-12:30pm	\$70/\$105 ●
126128	5-7	M/W	8/3-8/17	12:30-1:30pm	\$70/\$105 ●
126124	3-4	Tu	8/30-10/18	9:15-10am	\$112/168 ●
126125	4-6	Tu	8/30-10/18	10-11am	\$112/168 ●
126126	3-5	F	8/26-10/14	9:15-10am	\$112/168 ●
Basketball Skills					
126130	7-10	W	8/31-10/19	6-7pm	\$112/168 ●
126129	5-7	F	8/26-10/14	10-11am	\$112/168 ●

ALL STAR SPORTS

Floor Hockey Jr.

Ages 4-7

Learn the game before the skates go on! Players will learn the proper mechanics of stick handling, puck control, passing and shooting. Offensive and defensive strategies will also be covered. Participants must bring a bike helmet and gloves. Shin, knee, and elbow pads are optional. Location: Main Street Recreation Center. Min/Max: 5/16. (ch)

#/Link	Age	Day	Date	Time	R/NR
125032	5-6	Th	6/9-7/28	5:30-6:30pm	\$112/\$168 ●
126142	4-5	W	8/31-10/19	4-4:45pm	\$112/\$168 ●
126143	6-7	W	8/31-10/19	4:45-5:45pm	\$112/\$168 ●

ALL STAR SPORTS

Golf

Ages 4-7

We introduce boys and girls to golf through fun drills and games that help them learn the complicated golf swing, rules and proper etiquette. Clubs provided (may bring your own). Location: Main Street Recreation Center. Min/Max: 5/16. No class 7/4. (ch)

#/Link	Day	Date	Time	R/NR
Ages 4-5				
125061	M	6/13-8/1	2-2:45pm	\$98/\$147 ●
126153	Th	8/25-10/13	3-3:45pm	\$112/\$168 ●
Ages 4-6				
126155	Tu & Th	8/2-8/18	11:45am-12:30pm	\$84/\$126 ●
Ages 4-7				
125063	Tu	6/14-7/26	11-11:45am	\$98/\$147 ●
Ages 5-7				
125064	F	6/10-7/29	12-12:45pm	\$112/\$168 ●
125062	M	6/13-8/1	2:45-3:30pm	\$98/\$147 ●
126156	Tu & Th	8/2-8/18	3:30-4:15pm	\$84/\$126 ●
126154	Th	8/25-10/13	3:45-4:30pm	\$112/\$168 ●

ALL STAR SPORTS

Soccer Jr.

Ages 3-7

Soccer is a game that is action-packed so there's no sitting and waiting! The game of soccer is taught by hiding drills in fun games and using association techniques on the players' levels. Simple foot skills, dribbling, passing, shooting, basic rules and even work on spreading the field are covered. Kids also learn teamwork and sportsmanship. Equipment is provided. Location: Main Street Recreation Center. Min/Max: 5/16. No class 7/2. (ch)

#/Link	Day	Date	Time	R/NR
Ages 3-4				
125049	Th	6/9-7/28	11-11:45am	\$112/\$168 ●
125050	Sa	6/11-7/30	10-10:45am	\$98/\$147 ●
125047	Tu	6/14-7/26	5:15-6pm	\$98/\$147 ●
126149	Tu & Th	8/2-8/18	10-10:45am	\$84/\$126 ●
126151	Sa	8/6-8/20	10-10:45am	\$42/\$63 ●
126144	Tu	8/30-10/18	4:45-5:30pm	\$112/\$168 ●
126146	Th	8/25-10/13	11:45am-12:30pm	\$112/\$168 ●
126157	Sa	8/27-10/15	10-10:45am	\$112/\$168 ●
Ages 3-5				
126147	Th	8/25-10/13	4:30-5:15pm	\$112/\$168 ●
Ages 4-6				
125048	Th	6/9-7/28	10-11am	\$112/\$168 ●
125046	Tu	6/14-7/26	4:15-5:15pm	\$98/\$147 ●
126152	Sa	8/6-8/20	10:45-11:45am	\$42/\$63 ●
Ages 5-6				
126150	Tu & Th	8/2-8/18	10:45-11:45am	\$84/\$126 ●
Ages 5-7				
125051	Sa	6/11-7/30	10:45-11:45am	\$98/\$147 ●
126145	Tu	8/30-10/18	5:30-6:30pm	\$112/\$168 ●
126148	Th	8/25-10/13	5:15-6:15pm	\$112/\$168 ●

ALL STAR SPORTS

T-Ball Jr.

Ages 3-7

T-Ball can be a boring game if taught incorrectly. This approach to baseball is one that engages players regardless of skill level. They learn basic building blocks in a fun, safe environment. Program keeps players moving and learning even while in the dugout! Mechanics and hand eye coordination are the keys to early success. Players gain confidence as they learn the proper mechanics of catching, throwing, fielding, base running and batting. Participants must bring their own glove. Location: Main Street Recreation Center. Min/Max: 5/16. No class 7/2 or 7/4. (ch)

#/Link	Day	Date	Time	R/NR
Ages 3-4				
125028	F	6/10-7/29	10-10:45am	\$112/\$168 ●
125030	Sa	6/11-7/30	11:45am-12:30pm	\$98/\$147 ●
125024	M	6/13-8/1	3:45-4:30pm	\$98/\$147 ●
125026	W	6/15-7/27	5:15-6pm	\$98/\$147 ●
126138	M & W	8/3-8/17	3-3:45pm	\$70/\$105 ●
126140	Sa	8/6-8/20	11:45am-12:30pm	\$42/\$63 ●
126131	Tu	8/30-10/18	3-3:45pm	\$112/168 ●
126133	W	8/31-10/19	10-10:45am	\$112/168 ●
126135	F	8/26-10/14	2:45-3:30pm	\$112/168 ●
126136	Sa	8/27-10/15	10:45-11:30am	\$112/168 ●
Ages 4-6				
125029	F	6/10-7/29	10:45-11:45am	\$112/\$168 ●
125027	W	6/15-7/27	6-7pm	\$98/\$147 ●
126139	M & W	8/3-8/17	3:45-4:45pm	\$70/\$105 ●
126134	W	8/31-10/19	10:45-11:45am	\$112/168 ●
126137	Sa	8/27-10/15	11:30am-12:30pm	\$112/168 ●
Ages 5-7				
125025	M	6/13-8/1	4:30-5:30pm	\$98/\$147 ●
126132	Tu	8/30-10/18	3:45-4:45pm	\$112/168 ●



ALL STAR SPORTS

Baseball Skills

Ages: 6-9

Kids learn the importance of proper throwing mechanics, rotational hitting, bunting, fielding, pitching and catching. Speed and agility techniques are added to increase core strength and mobility for added bat speed, range in the field and linear speed for base running. In-game strategies are included to increase each player's overall knowledge. Participants must bring their own glove. Location: Main Street Recreation Center. Min/Max: 5/16. (ch)

#/Link	Day	Date	Time	R/NR
126141	M/W	8/3-8/17	4:45-5:45pm	\$70/\$105 ●

Ackerman Tot T-Ball

Ages 3-5

This class will introduce baseball fundamentals and game play including batting, catching, throwing, and base running and will include the principles of good sportsmanship, in a non-competitive and fun atmosphere. Location: Ackerman SFC. Min/Max: 5/30. (sl)

#/Link	Day	Date	Time	R/NR
125152	Sa	6/18-7/9	9:30-10:15am	\$45/\$60 ●
126499	Sa	7/28-8/13	9:30-10:15am	\$45/\$60 ●
126500	Sa	8/27-9/17	9:30-10:15am	\$45/\$60 ●

Little Sportsters

Ages 2-6

Learn a new sport each week. Children learn to warm up, cool down, and have fun while getting fit. Classes are designed to improve listening skills, instill a sense of teamwork, and enhance overall physical development in your child while having fun. Children ages 2-3 must be accompanied by an adult. Location: Spring Avenue Recreation Center. Min/Max: 6/10. No class 7/22 or 8/12. (dm)

#/Link	Day	Date	Time	R/NR
126384	F	6/10-7/8	10-10:45am	\$60/\$90 ●
126385	F	7/15-8/26	10-10:45am	\$60/\$90 ●

Little Pros

Ages 2-4 with adult

This is a perfect class for energetic children who love to run, jump, and play ball. You and your child will learn to warm up, cool down and have fun while getting fit. We teach a different sport each week. Location: Spring Avenue Recreation Center. Min/Max: 6/10. No class 7/22 or 8/12. (dm)

#/Link	Day	Date	Time	R/NR
126386	F	6/10-7/8	11-11:45am	\$60/\$90 ●
126387	F	7/15-8/26	11-11:45am	\$60/\$90 ●





Adult/Tot Ice Skating

Ages 3-4 with adult

Adults and tots are on the ice together. Both must wear skates. This class teaches ice coordination, balance, and agility in a fun atmosphere. Location: Center Ice of DuPage. Min/Max: 1/20. (dm)

#/Link	Day	Date	Time	R/NR
126393	Th	7/7-8/18	4:30-5pm	\$155 •
126394	Sa	7/9-8/20	9:10-9:40am	\$155 •

Adult/Tot Hockey

Ages 3-4 with adult

You and your little one will be introduced to the fundamentals of hockey through fun games and activities. Class will also teach ice coordination, balance, and agility. Both are on the ice together and must wear skates. Location: Center Ice of DuPage. Min/Max: 1/20. (dm)

#/Link	Day	Date	Time	R/NR
126392	Sa	7/9-8/20	8:10-8:40am	\$155 •

Ice Skating Tot 1

Ages 4-5

This class teaches progressive levels 1 to 4 providing children ages 4-5 with ice orientation, balance, agility, and fun. Skate rentals are available. Location: Center Ice of DuPage. Min/Max: 1/20. (dm)

#/Link	Day	Date	Time	R/NR
126401	Th	7/7-8/18	4:30-5pm	\$145 •
126402	Sa	7/9-8/20	9:10-9:40am	\$145 •

Little Hockey 1

Ages 3-5

For participants who have had no formal instruction. Kids will learn ice coordination, balance, and agility in a fun atmosphere while wearing hockey equipment. Hockey skates and helmet required. Hockey stick is optional. Location: Center Ice of DuPage. Min/Max: 1/20. (dm)

#/Link	Day	Date	Time	R/NR
126406	Th	7/7-8/18	4:30-5pm	\$145 •
126407	Sa	7/9-8/20	8:10-8:40am	\$145 •

Special Skater

Ages 3 and up

This class will follow the Learn to Skate USA Adaptive and Basic Skills curriculum. Skating helps to foster social skills, balance, a team atmosphere, a sense of achievement, and fun. Location: Center Ice of DuPage. Min/Max: 1/10. (dm)

#/Link	Day	Date	Time	R/NR
126408	Sa	7/9-8/20	11:20am-12:10pm	\$120 •

youth & teen sports

Youth Dodgeball Tournament

Grades 3rd-6th

Dip, duck, and dive! The Glen Ellyn Youth Dodgeball Tournament is loaded with fun and competition. Brackets will be divided up based on age. Teams are guaranteed two matches followed by playoffs for those teams that qualify. Teams can have a maximum of 8 players; the maximum number of players allowed on the court at any given time is 6. Location: Ackerman SFC. Min/Max: 6/12 teams. (bt)

Registration is completed on a team basis.

The team captain should register your team.

#/Link	Grade	Day	Date	Time	Fee	
125563	3rd-4th	Su	7/10	9am-2pm	\$100/team	●
125565	5th-6th	Su	7/10	9am-2pm	\$100/team	●

Skateboard Lessons

Ages 5-13

Appropriate for beginning and intermediate levels.

Beginners learn how to start, stop, turn, basic ramp riding, and tricks; intermediate skaters learn skills based on ability. Skaters must bring a drink and wear a helmet. Knee, elbow, and wrist guards encouraged. Email fpteamsskateboard@yahoo.com about a correct skateboard for this class.

Location: Newton Park. Min/Max: 4/10. (ch)

#/Link	Age	Day	Date	Time	R/NR	
126168	5-7	Th	6/9-6/30	4-5pm	\$110	●
126169	8-13	Th	6/9-6/30	5-7pm	\$200	●
126170	5-7	Th	7/7-7/28	4-5pm	\$110	●
126171	8-13	Th	7/7-7/28	5-7pm	\$200	●

Ackerman Youth Flag Football

Ages 8-12

Participants will be taught the fundamentals of football on the offensive and defensive sides of the ball and will go through a variety of drills, games, and contests to develop their football skill set. Location: Ackerman SFC. Min/Max: 5/40. (sl)

#/Link	Day	Date	Time	R/NR	
125160	Sa	6/18-7/9	10:30-11:15am	\$45/\$60	●
126506	Sa	7/23-8/13	10:30-11:15am	\$45/\$60	●
126507	Sa	8/27-9/17	10:30-11:15am	\$45/\$60	●

Lightning Running Club Fall Season 2022

Ages 6-14

Come run with us! Kids will build endurance and learn proper running form while training to run between a 2K and 3K in this informal, co-ed running club. Runners will be grouped by age and/or ability level. Registration fee includes practice time, team t-shirt, meet fees, and end of season meet. Registration for this program will be capped based on the number of volunteers committed to run practices. The Lightning Running Club is a volunteer-based program; if you are interested in becoming a volunteer coach, email chartnett@gepark.org. Min/Max: 10/30. (ch)

#/Link	Day	Date	Time/Location	R/NR	
126167	Tu & Sa	8/16-10/29	Tu: 6-6:45pm, Newton Park Sa: 8-8:45am, Maryknoll Park	\$95	●

Ackerman Speed Academy

Ages 10-14

Speed, agility, and quickness (also known as SAQ), are three of the top athletic qualities required to excel in many sports. Ackerman SFC personal training staff will lead a small group of athletes each week through exercises to increase the time it takes to cover a distance between two points (speed), the ability to change directions as fast as possible (agility), and the ability to react efficiently (quickness). This special training helps improve spatial awareness and motor skills for all sport types. Location: Ackerman SFC. Min/Max: 5/25. (sl)

#/Link	Day	Date	Time	R/NR	
126503	W	6/29-7/13	4:30-5:30pm	\$60/\$75	●
126504	W	7/20-8/3	4:30-5:30pm	\$60/\$75	●
126505	W	8/10-8/31	4:30-5:30pm	\$60/\$75	●

Fencing - Olympic Swordplay

Ages 7-14

Learn the beginning skills and techniques of this unique sport without fighting. Fencing is an excellent sport for children and teens. It combines agility, strength, coordination, and critical thinking between attack and defensive strategies. Participants are eligible to participate in the Advanced class after completing at least one session of the Beginning course. Please ask the instructor for advanced placement. Equipment is not provided but can be rented from the Fencing Club. Please contact them at (630) 678-0035 prior to the start of class. Location: Main Street Recreation Center. Min/Max: 4/12. (ch)

#/Link	Day	Date	Time	R/NR	
Beginner					
126161	Sa	7/16-8/6	11:15am-12:10pm	\$52/\$78	●
126162	Sa	8/13-9/3	11:15am-12:10pm	\$52/\$78	●
126163	Sa	9/10-10/22	11:15am-12:10pm	\$92/\$138	●
Advanced					
126165	Th	7/14-8/4	6:15-7pm	\$52/\$78	●
126166	Th	8/11-9/1	6:15-7pm	\$52/\$78	●
126164	Th	9/8-12/8	6:15-7pm	\$170/\$255	●

Youth Run 4 Fun

Ages 7-14

An informal introduction to running for children of all fitness levels. Fun drills, games, and relay races create a positive atmosphere in a non-competitive environment. Location: Ackerman SFC. Min/Max: 5/25. (sl)

#/Link	Day	Date	Time	R/NR	
126562	M	7/11-8/1	4:30-5:30pm	\$45/\$60	●
126563	M	8/8-8/29	4:30-5:30pm	\$45/\$60	●
126565	Th	7/14-8/4	5:30-6:30pm	\$45/\$60	●
126566	Th	8/11-9/1	5:30-6:30pm	\$45/\$60	●

Archery

Ages 10 and up

Certified Archery Instructor Jim Craig will teach the joy of archery in a fun, safe, and educational environment. Exciting drills and fun games will be implemented in this class. Recurve bows, blunt tipped arrows, and targets will be provided. Location: Maryknoll Park. Min/Max: 5/10. (ch)

#/Link	Age	Day	Date	Time	R/NR	
126311	10-16	Sa	9/3	12:30-2pm	\$25	●
126310	16 and up	Sa	9/3	2:30-4pm	\$25	●

Cyclones Volleyball Skills & Drills

Grades 3rd-8th

One of the top volleyball clubs in the area, the Cyclones, will be teaching a fun and fundamental-style volleyball program to youth through tweens. With its unique combination of drills, competition and instruction, this program focuses on breaking volleyball down into different skill stations. These stations offer the most effective way to capitalize on skills, knowledge, drills, and techniques. No equipment needed. Location: College of DuPage Physical Education Center. Min/Max: 6/30. (ch)

#/Link	Grade	Day	Date	Time	R/NR	
126158	3-4	M	9/12-10/3	6-7:15pm	\$90/\$135	●
126159	5-6	M	9/12-10/3	6-7:15pm	\$90/\$135	●
126160	7-8	M	9/12-10/3	6-7:15pm	\$90/\$135	●



ice skating & hockey

Ice Skating: Basic 1

Ages 6-13

Intended for students with no previous formal instructions. Participants will learn 1- and 2-foot glides, forward and backward swizzles, and backward wiggles. Skate rentals are available. Location: Center Ice of DuPage. Min/Max: 1/20. (dm)

#/Link	Day	Date	Time	R/NR
126398	Th	7/7-8/18	4:30-5:10pm	\$155 ●
126399	Th	7/7-8/18	5:30-6:10pm	\$155 ●
126400	Sa	7/9-8/20	9:10-9:50am	\$155 ●

Beginner Hockey

Ages 6-13

For participants who have had no formal instruction. Kids will learn basic forward and backward skating while wearing hockey equipment. Hockey skates and helmet required. Hockey stick is optional. Location: Center Ice of DuPage. Min/Max: 1/20. (dm)

#/Link	Day	Date	Time	R/NR
126395	Th	7/7-8/18	4:30-5:10pm	\$155 ●
126396	Sa	7/9-8/20	8:10-8:50am	\$155 ●

Beginner Hockey: Teen/Adult

Ages 14 and up

The class is "at your own pace" and is perfect for beginners, continuing adult skaters, or skaters who are returning to the ice after years of hiatus. Each skater will learn the basic hockey stance, stride, knee bend and other necessary fundamentals to be successful in playing hockey. Location: Center Ice of DuPage. Min/Max: 1/20. (dm)

#/Link	Day	Date	Time	R/NR
126397	Sa	7/9-8/20	8:10-8:50am	\$155 ●

Ice Skating: Teen/Adult Basic 1

Ages 14 and up

The class is "at your own pace" and is perfect for beginners, continuing skaters, or skaters who are returning to the ice after years of hiatus. Location: Center Ice of DuPage. Min/Max: 1/20. (dm)

#/Link	Day	Date	Time	R/NR
126403	Th	7/7-8/18	4:30-5:10pm	\$155 ●
126404	Th	7/7-8/18	5:30-6:10pm	\$155 ●
126405	Sa	7/9-8/20	9:10-9:50am	\$155 ●



softball

Girls Softball Skills Clinic

Ages 5-13

Our coaches will help develop and improve the individual skills of each player to take their game to the next level. Whether a beginner or high-flying athlete this softball clinic will help players accelerate their skill development and expand their knowledge of the game. Location: Ackerman SFC. Min/Max: 5/25. (sl)

#/Link	Age	Day	Date	Time	R/NR
126541	5-7	Tu	7/12-8/2	1-2pm	\$50/\$65 ●
126542	8-10	Tu	7/12-8/2	2-3pm	\$50/\$65 ●
126543	11-13	Tu	7/12-8/2	3-4pm	\$50/\$65 ●
126544	5-7	Th	7/14-8/4	1-2pm	\$50/\$65 ●
126545	8-10	Th	7/14-8/4	2-3pm	\$50/\$65 ●
126546	11-13	Th	7/14-8/4	3-4pm	\$50/\$65 ●

Fall Softball League

Grades 1st-8th (as of 9/1/22)

Fall Softball allows participants to continue to develop their softball skills during the fall season. For more information, visit glenellynsoftball.com. Location: Ackerman Park. (cb)

Register by 7/22

#/Link	Grade	R/NR
126487	1st-2nd	\$150 ●
126488	3rd-4th	\$150 ●
126489	5th-6th	\$150 ●
126490	7th-8th	\$150 ●

baseball

Boys Baseball Skills Clinic

Ages 5-13

Our coaches will help develop and improve the individual skills of each player to take their game to the next level. Whether a beginner or high-flying athlete this baseball clinic will help players accelerate their skill development and expand their knowledge of the game. Location: Ackerman SFC. Min/Max: 5/25. (sl)

#/Link	Age	Day	Date	Time	R/NR
126553	5-7	M	7/11-8/1	1-2pm	\$50/\$65 ●
126554	8-10	M	7/11-8/1	2-3pm	\$50/\$65 ●
126555	11-13	M	7/11-8/1	3-4pm	\$50/\$65 ●
126556	5-7	W	7/13-8/3	1-2pm	\$50/\$65 ●
126557	8-10	W	7/13-8/3	2-3pm	\$50/\$65 ●
126558	11-13	W	7/13-8/3	3-4pm	\$50/\$65 ●

Fall Baseball League

Grades 1st-8th (as of 9/1/22)

Teams practice once per week with multiple games played on the weekend, weather permitting. New for fall, grades 5-8 will play with wood bats. All other grades will continue to play with USA Baseball approved bats. A commitment of 80-90% participation in practices/games is encouraged. Note: There are no age exceptions for this program. Visit glenellynbaseball.com for more information. Location: Village Green Park. (cb)

Register by 7/22

#/Link	Grade	R/NR
126481	1st	\$150 ●
126482	2nd	\$150 ●
126483	3rd-4th	\$150 ●
136484	5th-6th	\$175 ●
126485	7th-8th	\$175 ●

basketball

BIG 3 SPORTS

Youth Basketball Skills

Grades 3rd-8th

Big 3 Sports coaching staff, which includes standout high school, college, and former professional players, host this basketball class where participants will learn and work on basic dribbling, shooting, and passing drills while learning correct fundamentals in a fun and team-oriented way.

Location: Ackerman SFC. Min/Max: 5/25. (sl)

#/Link	Grade	Day	Date	Time	R/NR	
125164	3rd-4th	Tu	6/7-6/28	4-5pm	\$96/\$112	●
126518	3rd-4th	Tu	7/5-7/26	4-5pm	\$96/\$112	●
126519	3rd-4th	Tu	8/2-8/23	3-4pm	\$96/\$112	●
125172	5th-6th	Tu	6/7-6/28	5-6pm	\$96/\$112	●
126522	5th-6th	Tu	7/5-7/26	5-6pm	\$96/\$112	●
126523	5th-6th	Tu	8/2-8/23	5-6pm	\$96/\$112	●
126525	7th-8th	Th	8/4-8/28	4-5pm	\$96/\$112	●

Youth Basketball Camp

Grades 4th-8th

Join the IHSA State Champions Glenbard West Boys basketball team and Head Coach Jason Opoka for this basketball camp. Players and coaches from the West team will lead players through various skills and drills during camp. Location: Ackerman SFC. Min/Max: 25/50. (bt)

#/Link	Grade	Day	Date	Time	R/NR	
126497	4th-6th	M-Th	8/1-8/4	9-10:30am	\$75/\$115	●
126501	7th-8th	M-Th	8/1-8/4	10:30am-12pm	\$75/\$115	●

5v5 Fall Youth Basketball

Grades K-8th

Teams will have a maximum of 10 players and will have one weekly practice and 5v5 games on Saturdays. Practices and games will be held at Ackerman Sports & Fitness Center for grades 1st-8th; kindergarten will meet once per week at Main Street Recreation Center. Each team will be coached by a volunteer. Games will be played against teams from Glen Ellyn and the Lombard Park District. Min/Max: 20/40. (bt)

Practice Begins: Week of September 12

Games Begin: September 17

Games End: October 29

Register by 7/8

#/Link	Grade	R/NR	
126520	K Boys	\$65/\$95	●
126521	K Girls	\$65/\$95	●
126509	1st/2nd Boys	\$90/\$135	●
126510	1st/2nd Girls	\$90/\$135	●
126511	3rd/4th Boys	\$90/\$135	●
126512	3rd/4th Girls	\$90/\$135	●
126513	5th/6th Boys	\$90/\$135	●
126514	5th/6th Girls	\$90/\$135	●
126515	7th/8th Boys	\$90/\$135	●
126516	7th/8th Girls	\$90/\$135	●



field hockey

RISE Field Hockey Fall Recreational Classes

Grades 1st-8th

Our fall recreational program will work on basic skills of the game of field hockey, and we will play small-sided games and scrimmages throughout the season. Athletes will receive a reversible pinny for practice and will need a stick, mouthguard, and shin guards. Location: Ackerman SFC. Min/Max: 15/50. (ch)

#/Link	Grade	Day	Date	Time	R/NR	
126316	1st-4th	Th	9/8-10/20	5:30-6:30pm	\$84	●
126317	5th-8th	Th	9/8-10/20	6:30-8pm	\$155	●

RISE Field Hockey Fall Recreational League

Grades 1st-8th

Join the first recreational field hockey league in the area. After registration ends, players will be assigned a team and compete against teams from Glen Ellyn and the surrounding Chicagoland area. Playdays will be round robin format and each team will play 1-2 games per meeting. Teams and game schedule will be released by 9/14. Team shirts will be provided at the first meeting date. Location: Oak Park River Forest High School (201 Scoville Ave., Oak Park). Min/Max: 10/20. (ch)

Register by 9/9

#/Link	Grade	Day	Date	R/NR	
126312	1st-2nd	Su	9/18-10/9	\$50	●
126313	3rd-4th	Su	9/18-10/9	\$50	●
126314	5th-6th	Su	9/18-10/9	\$50	●
126315	7th-8th	Su	9/18-10/9	\$50	●



lacrosse

Bulldogs Boys Fall Lacrosse

Grades 1st-8th

Players in grades 1st-4th will learn the necessary skills for cradling, ground balls, passing, shooting, and catching. Players should bring their own sticks. No additional equipment is needed. This 5th-8th grade program will be run in a pick-up game format. Coaches will divide the players into teams each week and act as coaching officials in the games. Full pads/equipment are required. Location: Ackerman SFC. Min/Max: 20/40. (cb)

#/Link	Grade	Day	Date	Time	R/NR	
126473	1st-4th	M	9/12-10/24	6:30-7:30pm	\$125	●
126474	5th-6th	M	9/12-10/24	7:30-8:30pm	\$125	●
126475	7th-8th	M	9/12-10/24	7:30-8:30pm	\$125	●

Girls Fall Lacrosse

Grades Pre-K to 8th

Jerry Considine (East Ave Lacrosse & Glenbard West Girls Varsity Lacrosse Coach), along with former and current players, provides instruction for all levels while creating a fun and welcoming environment. Practices are held on Sundays with games played on Saturdays against other area programs. A stick, goggles, and a mouth guard are required. Location: Newton Park. Min/Max: 20/40. (cb)

#/Link	Grade	Day	Date	Time	R/NR	
126477	PreK to K	Sa & Su	9/11-10/23	Su: 12-1pm Games TBD	\$85	●
126479	1st-4th	Sa & Su	9/11-10/23	Su: 12-1pm Games TBD	\$165	●
126480	5th-8th	Sa & Su	9/11-10/23	Su: 1-2:30pm Games TBD	\$200	●



soccer

House Soccer League: Fall

Grades Pre-K to 10th

Practices start the week of August 22 and are held once a week according to the volunteer coach's schedule. Games are played at Ackerman Park between 8am and 3pm on Saturdays from August 27 to October 22; Pre-K soccer will play on Saturdays only, with teams practicing prior to kickoff. Notification of team placement will be sent out between August 12-15; email bthomas@gepark.org if you have not heard from a coach by August 16. Participants are permitted to make one buddy request. If a request is not mutual between two participants, it is not guaranteed that they will be placed on the same team. (bt)

Regular Registration: Ends 7/12 (first come, first serve)

Late Registration: 7/13-7/27 (if players are needed)

#/Link	Grade	Regular R/NR	Late R/NR	
125417	Co-Rec Pre-K	\$60/\$90	\$85/\$115	●
125416	Co-Rec K	\$80/\$110	\$105/\$135	●
125400	Co-Rec 1st	\$80/\$110	\$105/\$135	●
125401	Co-Rec 2nd	\$80/\$110	\$105/\$135	●
125402	Co-Rec 3rd-4th	\$105/\$135	\$130/\$160	●
125403	Girls 3rd-4th	\$105/\$135	\$130/\$160	●
125404	Co-Rec 5th-6th	\$105/\$135	\$130/\$160	●
125405	Girls 5th-6th	\$105/\$135	\$130/\$160	●
125406	Co-Rec 7th-8th	\$105/\$135	\$130/\$160	●
125407	Co-Rec 9th-10th	\$105/\$135	\$130/\$160	●

Summer House Soccer League

Ages 5-11

This is a great opportunity for boys and girls to keep their soccer skills fresh during summer. Each week, players will work on a particular skill and then scrimmage at the end of class. This program is instructed by Future Pros trainers, the same trainers used by the Glen Ellyn Lakers travel teams. Each player is required to bring their own ball, cleats, shin guards, and water for each class. Location: Ackerman Park. Min/Max: 15/50. (bt)

#/Link	Age	Day	Date	Time	R/NR	
125398	5-7	Th	6/16-8/4	4:30-5:30pm	\$100/\$150	●
125399	8-11	Th	6/16-8/4	5:30-7pm	\$125/\$185	●

Lakers Academy

Grades 1st-2nd

Lakers Academy is a program designed to prepare players for the full-time Glen Ellyn Lakers travel soccer program. Training and games will be run by our Future Pros travel soccer trainers. Players are required to bring their own ball, cleats, shin guards, and water for each class. Location: Ackerman Park. Min/Max: 10/40. (bt)

#/Link	Day	Date	Time	R/NR	
126493	Th & Sa	8/25-10/22	Th: 4:30-6pm Sa: 2-3pm	\$245	●

tennis

Summer Youth Tennis Lessons

Ages 4-10

Our outdoor group tennis lessons on the courts at Glenbard West focus on teaching ball skills, fundamentals, and making sure your child loves tennis. All ability levels are welcome. Most lessons are held Monday through Thursday with weather make-up days on Fridays. Register by the week or purchase a 10- or 20-lesson pack. Please bring a racquet to class or you can purchase one online for \$30 using code [#125497](#). Each participant in the summer program receives a t-shirt. Min/Max: 4/24. (bt)

#/Link	Day	Date	Time	R/NR
Red Blast: Ages 4-6				
125502	M-Th	6/6-6/9	9-10am	\$90/\$130 •
125503	M-Th	6/13-6/16	9-10am	\$90/\$130 •
125504	M-Th	6/20-6/23	9-10am	\$90/\$130 •
125505	M-Th	6/27-6/30	9-10am	\$90/\$130 •
125506	Tu-F	7/5-7/8	9-10am	\$90/\$130 •
125507	M-Th	7/11-7/14	9-10am	\$90/\$130 •
125508	M-Th	7/18-7/21	9-10am	\$90/\$130 •
125509	M-Th	7/25-7/28	9-10am	\$90/\$130 •
125510	M-Th	8/1-8/4	9-10am	\$90/\$130 •

Orange Blast: Ages 7-8

125511	M-Th	6/6-6/9	10-11am	\$90/\$130 •
125512	M-Th	6/13-6/16	10-11am	\$90/\$130 •
125513	M-Th	6/20-6/23	10-11am	\$90/\$130 •
125514	M-Th	6/27-6/30	10-11am	\$90/\$130 •
125515	M-Th	7/5-7/8	10-11am	\$90/\$130 •
125516	M-Th	7/11-7/14	10-11am	\$90/\$130 •
125517	M-Th	7/18-7/21	10-11am	\$90/\$130 •
125518	M-Th	7/25-7/28	10-11am	\$90/\$130 •
125519	M-Th	8/1-8/4	10-11am	\$90/\$130 •

Green Blast: Ages 9-10

125520	M-Th	6/6-6/9	11am-12pm	\$90/\$130 •
125521	M-Th	6/13-6/16	11am-12pm	\$90/\$130 •
125522	M-Th	6/20-6/23	11am-12pm	\$90/\$130 •
125523	M-Th	6/27-6/30	11am-12pm	\$90/\$130 •
125524	M-Th	7/5-7/8	11am-12pm	\$90/\$130 •
125525	M-Th	7/11-7/14	11am-12pm	\$90/\$130 •
125526	M-Th	7/18-7/21	11am-12pm	\$90/\$130 •
125527	M-Th	7/25-7/28	11am-12pm	\$90/\$130 •
125528	M-Th	8/1-8/4	11am-12pm	\$90/\$130 •

Lesson Packs

125499	10-Class Pack: Come to any 10 lessons	\$240 •
125500	20-Class Pack: Come to any 20 lessons	\$380 •



Junior Competitive

Grades 6th-12th

This program is offered for beginner through intermediate players who are looking for a summer-long experience at learning and improving their tennis skills. Players will achieve success as they progress through a series of game-based drills. Players will be instructed in game strategy while also focusing on improvement on form, footwork and sportsmanship. There will be opportunities to play other tennis clubs in the area on Fridays. This program will be taught by Glen Ellyn Park District Tennis Pro Mark Cunnington, Glenbard West Girls coach Kevin Graham, and Glenbard West Boys coach Tad Keely. Location: Glenbard West tennis courts. Min/Max: 8/36. No class 7/4-7/7. (bt)

#/Link	Day	Date	Time	R/NR
Grades 6th-8th				
125531	M & W	6/6-7/27	12-1:30pm	\$215/\$240 •
125532	Tu & Th	6/7-7/28	12-1:30pm	\$215/\$240 •
125534	Summer Pass: Attend all M-Th Junior Competitive classes			\$380/\$440 •
125533	16-Class Pack: Come to any 16 Junior Competitive classes			\$240/\$265 •

Grades 9th-12th

125535	M & W	6/6-7/27	1:30-3pm	\$215/\$240 •
125536	Tu & Th	6/7-7/28	1:30-3pm	\$215/\$240 •
125538	Summer Pass: Attend all M-Th Junior Competitive classes			\$380/\$440 •
125537	16-Class Pack: Come to any 16 Junior Competitive classes			\$240/\$265 •





martial arts

Tae Kwon Do

New students are required to purchase a uniform (\$50) prior to the first class. This fee is not included in the registration fee. Colored belt students are required to have complete sparring gear.

Little Dragons Tae Kwon Do

Ages 4-5

This introductory class is designed to captivate the interest of our youngest students. Skills are developed through gentle instruction and appropriate games for their ability. This class focuses on developing balance, coordination, and respect for the discipline of martial arts training. All belts. Location: Spring Avenue Recreation Center. Min/Max: 4/15. (ch)

#/Link	Day	Date	Time	R/NR
126241	Sa	6/25-9/10	10:45-11:25am	\$156/\$234 •

Adult/Child Tae Kwon Do

Ages 7 and up with adult

This class provides families with a fun opportunity to spend time together while improving physical and mental conditioning through cardiovascular drills, calisthenics, and traditional Tae Kwon Do techniques including punching, kicking, and blocking. Fee is listed per person. All belts. Location: Spring Avenue Recreation Center. Min/Max: 4/15. (ch)

#/Link	Day	Date	Time	R/NR
126242	Sa	6/25-9/10	12:25-1:15pm	\$156/\$234 •

Early Tae Kwon Do

Ages 6-7

Designed especially for the younger children of 6-7 years, this program helps kids develop conditioning, coordination, listening skills, and self-confidence through creative activities. All belts. Location: Spring Avenue Recreation Center. Min/Max: 4/12. (ch)

#/Link	Day	Date	Time	R/NR
126240	Sa	6/25-9/10	11:30am-12:20pm	\$156/\$234 •

Youth Tae Kwon Do

Ages 8-13

This program includes a balanced cardiovascular workout, including punching, kicking, and blocking skills, using the Tae Kwon Do tradition, and self-control. Participants will improve coordination, power of concentration, balance, and both physical and mental discipline. All belts. Location: Spring Avenue Recreation Center. Min/Max: 4/12. (ch)

#/Link	Day	Date	Time	R/NR
126243	Sa	6/25-9/10	12:25-1:15pm	\$156/\$234 •

Shotokan Karate

Pre-Karate

Ages 4-7

Children will develop agility, strength and coordination skills through fun and creative activities. Watch your child blossom while learning karate and having a blast at the same time. Uniforms and belt testing are options available through the instructor for an additional fee. Min/Max: 5/10. (ch)



Adult/Child Karate

Ages 7 and up

Learning martial arts is an excellent opportunity to spend quality time with your child while conditioning muscles, developing coordination and improving cardiovascular fitness. Uniforms and belt testing are options available through the instructor for an additional fee. Fees are per person. Min/Max: 5/10. (ch)

Youth Karate

Ages 7-14

Youth karate classes offer a good mix of strength training, with cardiovascular and flexibility exercises. Children increase their coordination, agility and poise, as well as learn lasting personal safety skills. They also benefit from the mental stimulation of learning the choreographed moves of the kata and the discipline of conforming to the class rules. Min/Max: 5/10. (ch)

#/Link	Level	Day	Date	Time	R/NR
Pre-Karate at Wheaton Park District Central Athletic Complex					
125169	Beginner/Continuing	W	6/8-8/24	4:30-5:15pm	\$150/\$225 ●
125171	Inter/Adv.	W	6/8-8/24	5:15-6pm	\$150/\$225 ●
126248	Beginner/Continuing	W	9/7-12/14	4:30-5:15pm	\$179/\$268 ●
126247	Inter/Adv.	W	9/7-12/14	5:15-6pm	\$179/\$268 ●
Adult/Child Karate at Wheaton Park District Central Athletic Complex					
125178	Beg./Cont. White-Purple	Sa	6/11-8/27	3-4pm	\$150/\$225 ●
125179	Advanced Brown & Up	Sa	6/11-8/27	4-5pm	\$150/\$225 ●
126246	Beg./Nov. White-Orange	Sa	9/10-12/17	2-2:55pm	\$191/\$286 ●
126245	Intermediate Yellow-Purple	Sa	9/10-12/17	3-3:55pm	\$191/\$286 ●
126244	Advanced Brown & Up	Sa	9/10-12/17	4-4:55pm	\$191/\$286 ●
Youth Karate at Main Street Recreation Center					
125284	Beg./Cont. White-Yellow	W	6/8-8/24	6:45-7:40pm	\$150/\$225 ●
125286	Int./Adv. Blue-Black	W	6/8-8/24	7:45-8:40pm	\$150/\$225 ●
126252	Beg./Nov. White-Yellow	W	9/7-12/14	6:45-7:40pm	\$179/\$268 ●
126253	Int./Adv. Blue-Black	W	9/7-12/14	7:45-8:40pm	\$179/\$268 ●
Youth Karate at Wheaton Park District Central Athletic Complex					
125259	Beg./Cont. White-Purple	Sa	6/11-8/27	3-4pm	\$150/\$225 ●
125260	Advanced Brown & Up	Sa	6/11-8/27	4-5pm	\$150/\$225 ●
126251	Beg./Nov. White-Orange	Sa	9/10-12/17	2-2:55pm	\$191/\$286 ●
126249	Intermediate Yellow-Purple	Sa	9/10-12/17	3-3:55pm	\$191/\$286 ●
126250	Advanced Brown & Up	Sa	9/10-12/17	4-4:55pm	\$191/\$286 ●

Sports Performance Training

Strength and Conditioning Coach Mike Nishimura can help players in all sports programs increase their athleticism. Sessions focus on the three major goals of improving athletic performance, reducing athletic injuries, and teaching lifelong fitness and movement skills. You'll receive a customized workout plan to target different areas of the body and learn how to properly use workout equipment.

[Learn more »](#)





adult sports

Adult Dodgeball Tournament

Ages 18 and up

Relive your memories of middle school gym class! Run, throw, dodge, and duck your way to victory in our Adult Dodgeball Tournament at Ackerman SFC. Teams are guaranteed two matches followed by playoffs for those teams that qualify. There is an 8-player maximum per team as matches are played with 6 on the court. Location: Ackerman SFC. Min/Max 6/12. (bt).

Registration is completed on a team basis.

The team captain should register your team.

#/Link	Day	Date	Time	R/NR	
125556	Sa	6/11	12:30-4pm	\$100/team	●
125557	Su	7/10	2-5pm	\$100/team	●

Adult Softball Leagues

Ages 18 and up

Teams play a 10-game season followed by a post-season tournament. Men's 12" leagues are offered on Monday, Wednesday, Thursday, Friday, or Sunday. For details, email bthomas@gepark.org. Location: Madison Meadow, Lombard. (bt)

Register by 7/31

#/Link	League	Date	R/NR	
126598	Men's 12"	Weeks of 8/14-10/24	\$625/team	●
126599	Co-Ed 14"	8/16-10/25	\$625/team	●

YOU MAY ALSO LIKE

Adult Hockey & Ice Skating

See available classes on page 56.



\$5 Platform Tennis Clinics

Ages 6 and up

Learn the game of Platform Tennis and how to become involved in the program. Several of the area's top platform tennis professionals will be on hand to provide instruction on grips, rules, and strategies. Location: Platform Tennis Center. Min/Max: 1/20. (bt)

#/Link	Section	Day	Date	Time	R/NR	
126570	Juniors (6-17)	F	9/9	5-6pm	\$5	●
126571	Women	F	9/9	6-7pm	\$5	●
126572	Men	F	9/9	7-8pm	\$5	●

ISKC Karate Class

Ages 15 and up

In addition to teaching self-defense skills, karate develops flexibility, muscle tone and improves core strength. Continuing students need to purchase additional protective gear. Uniforms and belt testing are options available through the instructor for an additional fee. Location: Main Street Recreation Center. Min/Max: 8/25. No class 11/23. (ch)

#/Link	Day	Date	Time	R/NR	
Intermediate/Advanced Blue-Black					
125288	W	6/8-8/24	8:45-10pm	\$174/\$261	●
126254	W	9/7-12/14	8:45-10pm	\$207/\$310	●
Beginner/Novice White-Yellow					
126255	W	9/7-12/14	6:45-7:40pm	\$179/\$268	●



Your Community Premier Youth Hockey Club
offering top Tier II travel hockey through
Tier III and learn to play programs.

www.chicagoflameshockey.com

Keep your skills sharp
this summer with our
summer clinic options!

Skill Clinic Registration Opening Soon!

Stay COOL this summer!

3v3 Candy League

Wednesday 3v3 hockey games

Register as a team, or as an individual

Ages 8U, 10U, 12U and 14U co-ed

Great for hockey development for all levels (and FUN!)

Registration fee includes 8 games and a jersey



visit www.chicagoflameshockey.com for more info!

dance academy



Please contact Chad Shingler at cshingler@gepark.org with questions.

class descriptions

Adult/Tot Dance

Designed for our littlest dancers, this class introduces basic ballet, coordination, and gross motor skills through creative movement and interactive songs with a caregiver present. Ballet shoes are optional for adults/caregivers.

Tiny Tot

Your child will learn dance concepts and develop rhythm, coordination, and balance while moving and grooving to music and using creative props to inspire imagination. Adults are required to stay within the building for the duration of each class, no exceptions. Children must be able to attend class without an adult/caregiver present.

Creative Movement

This class develops motor skills, balance, cognitive awareness, creativity, rhythm, musicality, and self-esteem. Adults are required to stay within the building for the duration of each class, no exceptions. Children must be able to attend class without an adult/caregiver present.

Creative Hip Hop

This class develops creativity and musicality with a special focus on the rhythm, muscle memory, and coordination found in this urban dance style. Adults are required to stay within the building for the duration of each class, no exceptions. Children must be able to attend class without an adult/caregiver present.

Pre-Ballet/Tap

This class is divided into two units: ballet and tap. Your child will be taught core concepts, age-appropriate technique, and vocabulary in these two genres of dance.

Intro Ballet/Jazz

Your child will learn core concepts from both ballet and jazz. Both techniques will be taught in class at an age-appropriate level.

Ballet 1

This class will build a solid foundation of ballet terms and technique. Your child will learn to have musicality within their movement and gain strength. We will focus on core ballet concepts and build upon their previous dance knowledge.

Ballet 2

This class will use the foundations built in Ballet 1 but continue to grow and expand knowledge and ballet technique. Your child will learn more complex movement, and skills.

Jazz 1

This class is a focus on jazz technique and style, and growing confidence in movement. Your child will learn basic technique to rhythmic songs, while also finding their own way of moving.

Tap 1

Your child will be taught core concepts, age-appropriate technique, and vocabulary in tap.

Hip Hop 1

Your child will learn the basics of hip hop in this class. This high energy style of dance encompasses many different

urban dance styles and focuses on rhythm, muscle memory, and coordination. Gym shoes or sneakers are usually worn.

Modern

This class will center around modern techniques and finding your dancer's center. It will help dancers to find meaning in the movements they are doing and express that outwardly. We explore new ways of moving while building core strength and flexibility.

Lyrical

Lyrical is a combination of ballet and jazz styles that also focuses on expression. In this class dancers learn how to express themselves through movement while improving their technical skills. (cs)

class schedule

Instructional dance classes are offered on a seasonal basis. Download the [Dance Academy Guide](#), which includes dance class dress codes, at gepark.org/dance. Location: Spring Avenue Recreation Center. (cs)

#/Link	Class	Day	Age	Date	Time	Min/Max	R/NR	
125695	Creative Movement	M	3-4	6/20-7/25	4:30-5:15pm	5/12	\$50/\$65	●
125696	Pre-Ballet/Tap	M	4-5	6/20-7/25	5:20-6:05pm	5/12	\$50/\$65	●
125697	Ballet 1	M	5-6	6/20-7/25	6:10-6:55pm	5/12	\$50/\$65	●
125698	Ballet 2	M	7-8	6/20-7/25	7-8pm	5/12	\$50/\$65	●
125699	Adult/Tot	Tu	18-36 mo.	6/21-7/26	4:10-4:40pm	5/12	\$40/\$55	●
125700	Tiny Tot	Tu	2.5-3	6/21-7/26	4:45-5:15pm	5/8	\$40/\$55	●
125701	Tap 1	Tu	5-6	6/21-7/26	5:20-6:05pm	5/12	\$50/\$65	●
125702	Hip Hop 1	Tu	6-8	6/21-7/26	5:20-6:05pm	5/12	\$50/\$65	●
125703	Modern	Tu	7-9	6/21-7/26	6:10-6:55pm	5/12	\$50/\$65	●
125704	Jazz 1	Tu	7-9	6/21-7/26	7-8pm	5/12	\$50/\$65	●
125705	Adult/Tot	W	18-36 mo.	6/22-7/27	9:15-9:45am	5/12	\$40/\$55	●
125706	Tiny Tot	W	2.5-3	6/22-7/27	9:55-10:25am	4/8	\$40/\$55	●
125707	Creative Movement	W	3-4	6/22-7/27	10:30-11:15am	5/12	\$50/\$65	●
125708	Pre-Ballet/Tap	W	4-5	6/22-7/27	11:20am-12:05pm	5/12	\$50/\$65	●
125709	Creative Hip Hop	W	3-4	6/22-7/27	4:30-5:15pm	5/12	\$50/\$65	●
125710	Tap 1	W	6-11	6/22-7/27	4:30-5:15pm	5/12	\$50/\$65	●
125711	Intro Ballet/Jazz	W	4-5	6/22-7/27	5:20-6:05pm	5/12	\$50/\$65	●
125712	Hip Hop 1	W	6-8	6/22-7/27	6:10-6:55pm	5/12	\$50/\$65	●
125713	Ballet 1	W	5-6	6/22-7/27	7-7:45pm	5/12	\$50/\$65	●

class schedule continued

#/Link	Class	Day	Age	Date	Time	Min/Max	R/NR	
125714	Pre-Ballet/Tap	Th	4-5	6/23-7/28	9:30-10:15am	5/12	\$50/\$65	●
125715	Creative Movement	Th	3-4	6/23-7/28	10:20-11:05am	5/12	\$50/\$65	●
125716	Tiny Tot	Th	2.5-3	6/23-7/28	11:15-11:45am	5/8	\$40/\$55	●
125717	Lyrical	Th	8-12	6/23-7/28	12-12:45pm	5/12	\$50/\$65	●
125718	Pre-Ballet/Tap	Th	4-5	6/23-7/28	5:20-6:05pm	5/12	\$50/\$65	●
125719	Ballet 1	Th	5-6	6/23-7/28	6:10-6:55pm	5/12	\$50/\$65	●
125721	Tiny Tot	F	2.5-3	6/24-7/29	9:15-9:45am	5/12	\$40/\$55	●
125722	Creative Movement	F	3-4	6/24-7/29	9:50-10:35am	5/12	\$50/\$65	●
125723	Adult/Tot	F	18-36 mo.	6/24-7/29	10:45-11:30am	5/12	\$50/\$65	●
125724	Pre-Ballet/Tap	Sa	4-5	6/25-7/30	9-9:45am	5/12	\$50/\$65	●
125725	Ballet 1	Sa	5-6	6/25-7/30	9:50-10:35am	5/12	\$50/\$65	●
125726	Creative Movement	Sa	3-4	6/25-7/30	10:40-11:25am	5/12	\$50/\$65	●
125727	Tiny Tot	Sa	2.5-3	6/25-7/30	11:30am-12pm	5/8	\$40/\$55	●



SUMMER 2022 • 68

● Registration open now ● Registration opens at 9am June 4

gymnastics



Proper attire is mandatory for gymnastics participants. Girls should wear a gymnastics leotard or shorts and t-shirt (no tights or jewelry). Boys should wear shorts or sweatpants and t-shirt. Bare feet are required for all participants. Instructors reserve the right to move participants to a different class if they are not developmentally ready. No new registration will be taken after the second week of class. Please contact Christine Hartnett at chartnett@gepark.org with questions.

Adult/Tot Gymnastics

Ages 18-36 months

This fun-filled adult/tot play time program introduces your child to the exciting world of tumbling and gymnastics. Adult/Tot features tumbling and gymnastics equipment, balls, hoops, circles, and parachute play. Adult involvement is the key. Please no siblings. Location: Spring Avenue Recreation Center. Min/Max: 5/12. (ch)

#/Link	Day	Date	Time	R/NR	
126180	W	7/6-7/27	9:15-9:45am	\$44/\$66	●
126181	Th	7/7-7/28	9:15-9:45am	\$44/\$66	●
126179	Sa	7/9-7/30	9-9:30am	\$44/\$66	●
126173	W	8/3-8/24	9:15-9:45am	\$44/\$66	●
126175	Th	8/4-8/25	9:15-9:45am	\$44/\$66	●
126177	Sa	8/6-8/27	9-9:30am	\$44/\$66	●
126172	M	9/12-10/17	9-9:30am	\$66/\$99	●
126174	W	9/7-10/19	9:15-9:45am	\$77/\$115	●
126176	Th	9/8-10/20	9:15-9:45am	\$77/\$115	●
126178	Sa	9/10-10/15	9-9:30am	\$66/\$99	●

Tiny Tumblers Gymnastics

Age 3

This introductory gymnastic class helps develop gross motor skills and body awareness and teaches self-confidence while having fun. A variety of gymnastics and tumbling stations will be set up each week to introduce your gymnasts to the basic skills used in this sport. Children must be able to attend without a caregiver present. Location: Spring Avenue Recreation Center. Min/Max: 5/10. (ch)

#/Link	Day	Date	Time	R/NR	
126182	W	7/6-7/27	10-10:30am	\$44/\$66	●
126183	W	7/6-7/27	4-4:30pm	\$44/\$66	●
126185	Th	7/7-7/28	11-11:30am	\$44/\$66	●
126187	Sa	7/9-7/30	9:45-10:15am	\$44/\$66	●
126184	W	8/3-8/24	10-10:30am	\$44/\$66	●
126189	W	8/3-8/24	4-4:30pm	\$44/\$66	●
126186	Th	8/4-8/25	11-11:30am	\$44/\$66	●
126188	Sa	8/6-8/27	9:45-10:15am	\$44/\$66	●
126192	M	9/12-10/17	9:45-10:15am	\$66/\$99	●
126190	W	9/7-10/19	10-10:30am	\$77/\$115	●
126191	Th	9/8-10/20	11-11:30am	\$77/\$115	●
126193	Sa	9/10-10/15	9:45-10:15am	\$66/\$99	●



Preschool Gymnastics

Ages 4-5

A variety of gymnastics and tumbling stations will be set up each week to introduce your gymnast to the basic skills used in this sport. Children must be able to attend class without a caregiver present. Location: Spring Avenue Recreation Center.

Min/Max: 5/12. (ch)

Kindergarten Gymnastics

Ages 5-6

This class was designed to help refine and develop the gross motor skills taught in previous classes. A higher skill level of gymnastics stations will be set up each week to increase strength, flexibility, and coordination. Location: Spring Avenue Recreation Center. Min/Max: 5/12. (ch)

#/Link	Day	Date	Time	R/NR	
Preschool					
126194	W	7/6-7/27	4:45-5:30pm	\$52/\$78	●
126197	Th	7/7-7/28	10-10:45am	\$52/\$78	●
126199	Sa	7/9-7/30	10:30-11:15am	\$52/\$78	●
126195	W	8/3-8/24	4:45-5:30pm	\$52/\$78	●
126201	Th	8/4-8/25	10-10:45am	\$52/\$78	●
126202	Sa	8/6-8/27	10:30-11:15am	\$52/\$78	●
126196	W	9/7-10/19	5-5:45pm	\$91/\$136	●
126198	Th	9/8-10/20	10-10:45am	\$91/\$136	●
126200	Sa	9/10-10/15	10:30-11:15am	\$78/\$117	●
Kindergarten					
126203	W	7/6-7/27	5:45-6:30pm	\$52/\$78	●
126206	Sa	7/9-7/30	11:30am-12:15pm	\$52/\$78	●
126204	W	8/3-8/24	5:45-6:30pm	\$52/\$78	●
126207	Sa	8/6-8/27	11:30am-12:15pm	\$52/\$78	●
126205	W	9/7-10/19	6-6:45pm	\$91/\$136	●
126208	Sa	9/10-10/15	11:30am-12:15pm	\$78/\$117	●
Preschool & Kindergarten (Combined Class)					
126213	W	7/6-7/27	10:45-11:30am	\$52/\$78	●
126211	W	8/3-8/24	10:45-11:30am	\$52/\$78	●
126214	M	9/12-10/17	10:30-11:15am	\$78/\$117	●
126209	M	9/12-10/17	1:30-2:15pm	\$78/\$117	●
126210	Tu	9/6-10/18	2:30-3:15pm	\$91/\$136	●
126215	W	9/7-10/19	10:45-11:30am	\$91/\$136	●
126212	W	9/7-10/19	4-4:45pm	\$91/\$136	●

Make-Up Policy

We do not issue refunds for missed classes. Occasionally, we can offer make-up classes if the other sessions are not filled. Please contact Christine Hartnett at chartnett@gepark.org to see if make-ups can be accommodated.



Stay & Play Open Gym

Children (preschool or younger) can stay active and play in the Spring Avenue Gymnastics Center. This safe and fun environment is the perfect spot for your child to interact with you and other peers. Pre-registration is not required but come early as space is limited to the first 30 participants. Children must be accompanied and supervised by an adult.

Please pay inside the Gymnastics Center. (ch)

Dates: June 3 to August 26

Day: Fridays

Time: 9am-11am

Drop-in R/NR Fee: \$5/\$8

10-Visit Punch Card

R/NR Fee: \$40/\$70

SUMMER 2022 • 70

● Registration open now ● Registration opens at 9am June 4



Pre-Developmental Gymnastics

1st grade to age 12

The focus of this beginner program will be on floor exercise, springboard skills, bars, and beam. Stretching and conditioning for muscle tone will be included.

Location: Spring Avenue Recreation Center. Min/Max: See online. (ch)

#/Link	Day	Date	Time	R/NR	
126221	Th	7/7-7/28	4-5pm	\$60/\$90	●
126222	Sa	7/9-7/30	12:30-1:30pm	\$60/\$90	●
126217	Th	8/4-8/25	4-5pm	\$60/\$90	●
126219	Sa	8/6-8/27	12:30-1:30pm	\$60/\$90	●
126216	Tu	9/6-10/18	4:30-5:30pm	\$105/\$157	●
126218	Th	9/8-10/20	4-5pm	\$105/\$157	●
126220	Sa	9/10-10/15	12:30-1:30pm	\$90/\$135	●

Developmental Gymnastics

Ages 8-12

This program is a continuation of Pre-Developmental Gymnastics. Participants must be able to perform round offs, cartwheels, forward/backward rolls, handstand, and a bridge in order to register. Location: Spring Avenue Recreation Center. Min/Max: See online. (ch)

#/Link	Day	Date	Time	R/NR	
126230	Th	7/7-7/28	5:15-6:15pm	\$60/\$90	●
126228	Sa	7/9-7/30	12:30-1:30pm	\$60/\$90	●
126224	Th	8/4-8/25	5:15-6:15pm	\$60/\$90	●
126229	Sa	8/6-8/27	12:30-1:30pm	\$60/\$90	●
126223	Tu	9/6-10/18	5:45-6:45pm	\$105/\$157	●
126225	Th	9/8-10/20	5:15-6:15pm	\$105/\$157	●
126226	Sa	9/10-10/15	12:30-1:30pm	\$90/\$135	●

Tumbling 1

Ages 7-14

No skills required. Start out learning the proper way to perform handstands, cartwheels, and more. Participants will build on their skills each session. Location: Spring Avenue Recreation Center. Min/Max: See online. (ch)

#/Link	Day	Date	Time	R/NR	
126233	Th	7/7-7/28	6:30-7:15pm	\$52/\$78	●
126231	Th	8/4-8/25	6:30-7:15pm	\$52/\$78	●
126232	Th	9/8-10/20	6:30-7:15pm	\$91/\$136	●

Tumbling 2

Ages 7-14

Participants must possess basic skills such as cartwheel, round-off, forward/backward rolls, handstand, and bridge. Location: Spring Avenue Recreation Center. Min/Max: See online. (ch)

#/Link	Day	Date	Time	R/NR	
126236	Th	7/7-7/28	6:30-7:30pm	\$60/\$90	●
126234	Th	8/4-8/25	6:30-7:30pm	\$60/\$90	●
126235	Th	9/8-10/20	6:30-7:30pm	\$105/\$157	●

Pre-Season Grasshoppers

Ages 5-14

Interested in joining the 2022-2023 Glen Ellyn Grasshoppers Tumbling Team? Want to get a feel for how practices are run and what a competitive routine looks like? Grasshoppers Pre-Season will help new and returning gymnasts enhance their skills. Coaches will teach participants a practice routine that they will get to test out at our "mock meet" at the end of the session. Location: Spring Avenue Recreation Center. Min/Max: 5/15. (ch)

#/Link	Day	Date	Time	R/NR
New				
126238	M	7/11-8/15	4-5pm	\$90/\$135 •
Returning				
126239	M	7/11-8/15	5:15-6:15pm	\$90/\$135 •

Grasshoppers Team 2022-2023

Ages 5-14

The Glen Ellyn Grasshoppers Tumbling Team focuses solely on tumbling and will compete in meets through the Illinois Park District Gymnastics Conference. New participants are required to register for the FREE Placement Day to determine their competitive level. If you are unable to make the placement day, coaches will assess new gymnasts at the first practice and assign levels and practice time. Practice times will be Mondays for an hour and 15 minutes between 4 to 7:45pm and Fridays for one hour between 4 to 7:30pm. Final practice schedule will be sent by 9/1. No new registrations will be taken after 9/13. Location: Spring Avenue Recreation Center. (ch)

Information Meeting: August 16, 6pm
Spring Avenue Recreation Center

Placement Date

#/Link	Day	Date	Time	R/NR
126227	Tu	8/16	5-6pm	Free w/registration •

Team Registration

#/Link	Day	Date	R/NR
126237	M & F	9/12-2/27	\$430/\$645 •

**YOUR COMMUNITY.
YOUR PARKS.
YOUR DECISION.
VOTE ON JUNE 28.**



If approved by voters on June 28, **a new 6,000-square-foot gymnastics center and adjacent 2,100-square-foot viewing area** and multipurpose room is one of the benefits the Glen Ellyn Park District referendum would provide.

Find out more at:

gepark.org/futureparks



nature

Forest Fitness Hike

Ages 8 and up

Walk four miles at a brisk pace through natural areas, trails, and city streets. Children must be accompanied by an adult.

Min/Max: 4/20. (1b)

Date: Saturday, August 6

Location: Ackerman Park

Time: 9-10:30am

R/NR: Free w/registration

#/Link: [126337](#) •

Nature Walking Club *Free!*

Ages 18 and up

Bring your sense of adventure and wonder as we explore our natural heritage on local trails. These casual walks will highlight seasonal natural happenings and are held rain or shine. Min/Max: 4/12. (1b)

COD Natural Areas Tour

Date: Friday, June 17

Location: College of DuPage

Time: 9-10:30am

R/NR: Free w/registration

#/Link: [126579](#) •

Parakeets and a Prairie

Date: Friday, July 8

Location: Ackerman Park

Time: 9-11am

R/NR: Free w/registration

#/Link: [126580](#) •

Rewilding Lake Ellyn

Date: Friday, August 12

Location: Lake Ellyn Park

Time: 9-10:30am

R/NR: Free w/registration

#/Link: [126329](#) •

Ponds and Wetlands

Date: Friday, September 9

Location: Panfish Park

Time: 9-10:30am

R/NR: Free w/registration

#/Link: [126330](#) •

Nature Outings

Ages 2-5 with adult

Explore nature this summer. Each class will feature a different topic supported by a story, craft/project, and an easy exploratory hike. Min/Max: 4/12. (lb)

#/Link	Day	Date	Time	R/NR	
<i>Maryknoll Stroll at Maryknoll Park</i>					
126322	F	8/5	10-11am	\$10/\$15	●
<i>Hummingbirds at Churchill Park</i>					
126323	F	8/19	10-11am	\$10/\$15	●
<i>Seeds and Fruit at Ackerman Park</i>					
126324	F	9/16	10-11am	\$10/\$15	●
<i>Owls at Lake Ellyn</i>					
126321	F	9/30	10-11am	\$10/\$15	●

Eco Explorers

Ages 5-12

Explore the ecosystems in a Glen Ellyn natural area. Small pockets of wild plants, animals, and places exist in our neighborhood parks. Get outside, explore, and learn about these important spaces. We may get a little dirty scrambling through the woods; we may make some nature collections; we may splash through some wet areas. Min/Max: 5/14. (lb)

#/Link	Day	Date	Time	Location	R/NR
126326	Sa	7/16	1-2:30pm	Ackerman Park	\$10/\$15 ●
126327	Sa	8/20	1-2:30pm	Churchill Park	\$10/\$15 ●

Friday Family Night Hike

All ages

Start your weekend off by experiencing the mysteries of nature at night. Walking at night is truly a sensory experience. Join us for a nature stroll as the sun sets and the sky grows dark. The focus will be on nocturnal wildlife. Please sign up only one member of your family to reserve a space. Location: Churchill Park. Min/Max: 4/10 families. (lb)

#/Link	Day	Date	Time	R/NR
126328	F	7/22	8:30-9:30pm	\$20/\$30 ●

Predator Patrol

Ages 5-12

Predators are at the top of the food chain and play an important role in sustaining nature's balance. Many mammals, reptiles, amphibians, birds, and insects are hunters. Explore the trails throughout the park in search of wild stalkers. Location: Churchill Park. Min/Max: 5/14. (cg)

#/Link	Day	Date	Time	R/NR
125910	Sa	6/11	1-2:30pm	\$10/\$15 ●

Superpower Plants: Villains and Heroes

Ages 5-12

Did you know that a plant killed Abraham Lincoln's mother? Learn about the good, bad and ugly - superheroes and villains of the plant world. Location: Churchill Park. Min/Max: 4/20. (lb)

#/Link	Day	Date	Time	R/NR
126378	Tu	8/9	10-11:30am	\$10/\$15 ●

Monarchs, Milkweed, and Migration

Ages 5-12

Spend the afternoon with us searching for monarch caterpillars and butterflies, playing games, and learning about this butterfly's life cycle. Location: Maryknoll Park. Min/Max: 4/20. (lb)

#/Link	Day	Date	Time	R/NR
126538	F	9/9	1:30-3pm	\$10/\$15 ●





Parks for Pollinators BioBlitz

Citizen Science Opportunity

Ages 8 and up

Challenge your friends or siblings! Who can document the most pollinators? During a BioBlitz, community members, students, teachers, and scientists try to find as many organisms as they can at a particular place during a short period of time. These records give a picture of that area's biodiversity. Join the National Recreation and Parks Association's national campaign to advance pollinator health and native habitat. Learn what's happening to pollinators. Learn how native habitats support insect life. Participate in the BioBlitz in our park, using iNaturalist on your phone. Please register only one person per family/group. Location: Churchill Park. Min/Max: 4/20. (lb)

#/Link	Day	Date	Time	R/NR
126339	Sa	9/17	1:30-2:30pm	\$10/\$20 ●

Nighthawk Walk

All ages

Have you been outside at night in the summer and heard weird noises above you or seen a dark shadow zipping around the night sky? There is a good chance it is a nighthawk. We will walk around the park looking for nighthawks and share where to find them, how they help people, and even crazy myths that have been attached to this bird. Please register just one member of your family. Location: Ackerman Park. Min/Max: 4/10 families. (cg)

#/Link	Day	Date	Time	R/NR
125679	F	6/3	8-9:30pm	\$20/\$30 ●

Happy and Healthy Hummingbirds

All ages

Learn all about these amazing birds and how to attract them to your yard. We will assemble your feeder and demonstrate how to clean it. We will also prepare a starter jar of nectar (that you will take home) and learn how often to change it. The evening will wrap up with a nature walk to look for the flowers that hummingbirds love to visit. Each registration will receive a hummingbird feeder. Please register only one person per family. Children must be accompanied by an adult. Location: Churchill Park. Min/Max: 4/20. (lb)

#/Link	Day	Date	Time	R/NR
126377	W	8/3	6:30-7:30pm	\$30/\$40 ●

Migration Mornings *Free!*

Ages 18 and up

During fall migration, thousands of birds pass through our area on their journey south. With many of these birds traveling to South and Central America from Canada, they rely on patches of natural areas – big and small – to rest and refuel. Take a casual walk with us to catch a glimpse of these often-beautiful birds and learn why they are so amazing. Free, but registration required. Min/Max: 4/12. (cg)

#/Link	Day	Date	Time	R/NR
Churchill Park				
126325	Th	9/1	8:30-10am	Free w/registration ●
Glen Ellyn Manor Park				
126331	Th	9/8	8:30-10am	Free w/registration ●
126334	Th	9/29	8:30-10am	Free w/registration ●
Ackerman Park				
126332	Th	9/15	8:30-10am	Free w/registration ●
Lake Ellyn Park				
126333	Th	9/22	8:30-10am	Free w/registration ●



Conservation at Home

Ages 18 and up

Learn what Conservation@Home is and how you can use native plants to make your yard a better habitat. We will cover rain gardens, rain barrels, and more. Finish the evening with a garden tour. Advice selecting plants for the Native Tree and Shrub Sale will also be available. Location: Spring Avenue Recreation Center. Min/Max: 4/20. (lb)

#/Link	Day	Date	Time	R/NR
126338	W	8/24	6:30-7:30pm	\$10/\$20 •

Restoration Workdays

Volunteer Opportunity

Ages 8 and up

Help clear invasive plants, cut and stack brush, plant native flowers, trees, and seeds, maintain trails, and more. Please bring your own work gloves and water bottle. Contact Laurie at lbellmar@gepark.org if you have questions. Free, but registration required.

#/Link	Day	Date	Time	Location
126581	Sa	6/11	9-11am	Maryknoll Park •
126379	Sa	7/16	9-11am	Ackerman Woods •
126380	Sa	8/20	9-11am	Churchill Park •
126381	Sa	9/17	9-11am	Glen Ellyn Manor Park •

Volunteer Day at Maryknoll Butterfly Garden

Volunteer Opportunity

Ages 8 and up

Join us for an hour of gardening with friends in this community park. Several of our native plants and butterflies will be spotlighted during the event. Children must be accompanied by an adult. Location: Maryknoll Park. Min/Max: 4/20. (lb)

#/Link	Day	Date	Time	R/NR
126376	Sa	6/25	9-10am	Free w/registration •

Heartwood Heroes

Volunteer Opportunity

Ages 8 and up

How do you take a tree's temperature? Be part of a community effort to give our trees a checkup. Learn to evaluate the health of trees, in your yard and in the parks. Review common pests and diseases that affect trees. Practice recording observations with the app "Healthy Trees, Healthy Cities." Please register only one person per family/group. Location: Spring Avenue Recreation Center. Min/Max: 4/20. (lb)

#/Link	Day	Date	Time	R/NR
126335	W	6/29	6:30-7:30pm	Free w/registration •

ackerman sfc

800 ST. CHARLES ROAD, GLEN ELLYN • ACKERMANSFC.COM



ackerman SFC facility hours

Fitness Center/Walking Track

Monday-Thursday	4:30am-10pm
Friday	4:30am-9pm
Saturday	6am-7pm
Sunday	7am-7pm

Front Desk

Monday-Friday	5am-9pm
Saturday	6am-5pm
Sunday	7am-5pm

Holidays

July 4	7am-1pm
September 5	7am-1pm

what's in the gym

- PRECOR Adaptive Motion Trainers
- PRECOR EFX Ellipticals with Crossramp
- Matrix and Life Fitness Treadmills
- NuStep Recumbent Steppers
- Matrix, Octane, & Life Fitness Ellipticals
- Matrix ARC Trainers
- Matrix Bikes (Recumbent/Upright/Hybrid)
- Matrix Single Station Strength Machines
- Gauntlet Stairmasters
- Scifit Pro2 Trainers
- Concept 2 Rowing Machines
- Xerball & Medicine Ball
- Free Weights & Core Conditioning
- Stretching & CrossFit Area w/TRX Straps
- Cable Cross Weight Machines

amenities

7,000+ square foot fitness center, 3 court gymnasium, 45-yard by 60-yard indoor turf field, 2 lane indoor track (10.3 laps = 1 mile), group fitness studio, Ackerman Training Room with batting cages, locker rooms and shower facility, and free Wi-Fi.

**See the Group
Fitness Schedule »**

**View Personal
Training Options »**

membership rates and benefits

\$0 ENROLLMENT FEE

- Fitness center and indoor track access
- Free weekly group fitness classes
- Open court/turf time
- Orientation with a personal trainer
- Bring a guest on the first Wednesday of the month
- Use of the Spring Avenue Fitness Center

We will automatically charge your membership fees to the credit/debit card you place on file each month.

Membership Type*	Resident	Nonresident
Teen (14-17)	\$21	\$23
Senior (60+)	\$21	\$23
Active Military	\$21	\$23
Individual (18-59)	\$30	\$35
Couple	\$50	\$55
Family	\$60	\$65

work in glen ellyn?

Ackerman SFC offers special membership rates to Glen Ellyn employees and teachers with proof of employment. Call or visit the Ackerman SFC front desk for details.



Home for break?

90 Days for \$90 Student & Teacher Special

Avoid a summer slump and keep up with your workouts over the break. Sign up for an Ackerman SFC membership good for 90 days for only \$90 any time between now through June 15, 2022.

A valid school ID or proof of employment is required at time of purchase. Must be 14 years of age or older.

MEMBERSHIP ADD-ON

college of dupage lap swimming

Active Ackerman SFC fitness members (ages 16+) may purchase a lap swimming monthly membership to swim at College of DuPage's indoor pool for just \$20 per member per month. Members that are ages 16-17 must have an adult/guardian sign the College's waiver of liability. Walking track only members are not eligible for this offer. To sign up, visit the College's Member Service Office where they will setup your membership. C.O.D. indoor pool hours are available at: www.gepark.org/COD

*Residents are defined as those living within Glen Ellyn Park District boundaries. Must provide proof of age if requested. A teen is defined as a person age 14-17 (age 11-13, if certified). Waiver must be signed by a legal guardian. An individual is defined as a person age 18 and up. A senior is defined as a person age 60 and up. A family is defined as up to six immediate family members residing in the same household and children 26 years and younger living at home. Other relatives and individuals in the same household are not included in the family pass. Children 10 years and under have access to open turf, open gym, and open climb. Children 8 to 13 can access the track with an adult. Fitness center is available for children 14 years and older (age 11-13 after orientation; see front desk to set up an appointment). A couple is defined as two people living at the same address.

group fitness classes

Group fitness classes are included as part of the Ackerman SFC member fee. With more than 50 options to choose from each week, you're sure to find a class to fall in love with. Classes do not require registration, and may take place on the court, turf, or in the 2nd floor fitness studio.

[VIEW THE CLASS SCHEDULE »](#)

walking track

The track is free for Ackerman members. Ages 8-13 must be accompanied by a member age 18 years or older to use the walking track.

DAILY DROP-IN

Ackerman SFC member Free
R/NR Daily Drop-in \$5/\$7

ANNUAL PASSES

Resident (Ages 8-59) \$35
Nonresident (Ages 8-59) \$50
Senior (Ages 60 & Up) \$25

open pickleball

Using a paddle, low net and a plastic ball with holes, this unique sport is enjoyed by people of all ages and athletic abilities thanks to its ease of play and straightforward rules.

SCHEDULE

To view the schedule, visit: ackermansfc.com/pickleball

FEES

Ackerman SFC member Free
R/NR Daily Drop-in \$5/\$7
R/NR 5-Visit Punch Card \$20/\$30

open court & turf

No reservations required. Please call the Ackerman SFC front desk for daily available open gym times. Open to both members and non-members.

DAILY DROP-IN FEES

Ackerman SFC member Free
Youth R/NR Daily Drop-in \$4/\$5
Adult R/NR Daily Drop-in \$5/\$6



ackerman kids zone *New!*

Get your workout in as your little ones take part in fun activities like Tot Tumbling, Arts and Crafts, Story Pajama Time, and other formats with the new Ackerman Kids Zone, available 8:30 to 10:30am Monday, Wednesday, and Friday. Sign your child up for monthly unlimited classes (\$20/month for the 1st child and \$12/month for each additional child), or drop-in for \$7 per child.

Kids Zone is currently available to Ackerman SFC members only. Spots are limited to 15 kids per class. Visit ackermansfc.com/kids-zone to learn more.

monday miles running/walking club

Step out with fellow runners, joggers, and walkers every Monday evening from 5 to 7pm, and log your distance to earn special milestone prizes. Monday Miles will be held outdoors at Ackerman Park when weather allows and indoors on the walking track during inclement weather. Free for Ackerman SFC members. Walking track pass or \$3 drop-in fee required for non-members. All ages. (mn)

Special theme nights this summer include:

- Ackerman Night on June 6
- Bark in the Park Night on June 20
- Nature Night on July 11
- Raffle Run on August 1

Monday Miles will not meet on July 4.



nutrition coaching

Visit the Ackerman SFC front desk for more information or to setup your sessions.

NEW CLIENT CONSULTATION (60 MINUTES): \$60

New clients will meet with Kara Downing, Registered Dietitian, to discuss current eating habits, diet/health history, and personal goals. Consultation includes a lifestyle and nutrition assessment and individualized recommendations for reaching your goals, including meal plans, as well as a 30-minute followup appointment to discuss progress, address challenges, and reassessment of individual recommendations if needed.

NUTRITION & WELLNESS PACKAGES

Extended nutrition coaching packages are available to further help reach your health goals. Each plan includes email support with two email exchanges per week to ask questions, receive feedback and motivation, as well as additional weekly meal plans.

3-Week Plan: \$80

6-Week Plan: \$165

12-Week Plan: \$325

NUTRITION & WELLNESS DISCOUNT ULTIMATE PACKAGE: \$375

Save as you gain more nutritional knowledge with the Ultimate Package, which includes the initial consultation, an in person 30-minute follow-up appointment, and a 12-week nutrition plan. Virtual options available as well.

ADD PERSONAL TRAINING AND SAVE 10%

Pair your nutritional package with any personal training package and receive 10% off.

personal training

Our certified personal trainers will design a program that meets your specific fitness needs. They can help you reach and/or maintain your goal by guiding you through safe, productive, supervised workouts.

# of Sessions	Length	Member	Non-Member
One	30 minutes	\$29	\$49
Three	30 minutes	\$84	\$126
Six	30 minutes	\$150	\$225
Twelve	30 minutes	\$282	\$423
One	1 hour	\$45	\$60
Three	1 hour	\$130	\$175
Six	1 hour	\$255	\$340
Twelve	1 hour	\$500	\$638

sports training

Visit the Ackerman SFC front desk for more information or to setup your sessions.

SPORTS PERFORMANCE TRAINING

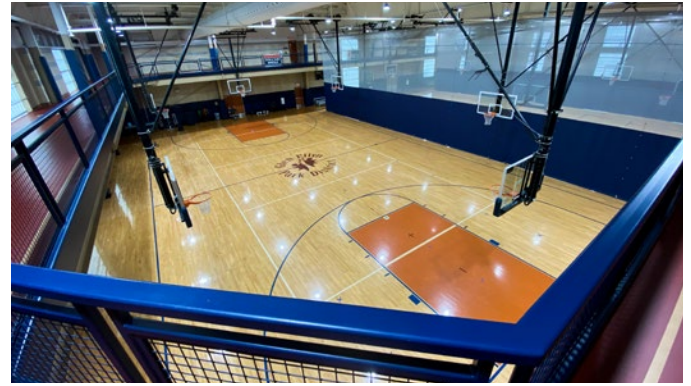
Strength and Conditioning Coach Mike Nishimura can help players in all sports programs increase their athleticism. Sessions focus on the three major goals of improving athletic performance, reducing athletic injuries, and teaching lifelong fitness and movement skills. You'll receive a customized workout plan to target different areas of the body and learn how to properly use workout equipment. Sessions start at \$29.

VOLLEYBALL TRAINING

All-State Coach Christine Giunta-Mayer offers private lessons for student athletes in 5th grade through college. Private lessons are perfect for players that want to focus on specifics of their game. Sessions start at \$70.

BASKETBALL TRAINING

Sign up for private lessons from Skill Development Coach Brett Love. Brett has high school and collegiate level playing experience with the credentials to train players to take their skills to the next level. Sessions start at \$45.



batting cage rentals *New!*

Four batting cage tunnels are now available to rent at Ackerman SFC. Your batting cage rental includes use of a batting cage tunnel and one L screen. This facility requires visitors to bring their own sport-specific ball. Guests of high school age and older may use the batting cages independently. Guests in 8th grade and below must be accompanied by an adult at all times. Please note, the use of batting cages is not included with memberships, punch cards, or daily drop ins. Batting cages can be reserved in advance by calling (630) 317-0134 or rmiller@gepark.org.

facility rentals

Three full-size basketball courts and an indoor artificial turf field are available to rent for practices, games, and more. The facility also features an outdoor volleyball court, training room, fitness/dance studio, and a party room. Call (630) 317-0134 or email rmiller@gepark.org for details.

birthday parties

Our birthday party packages are bursting with activities for kids in an environment that is fun, safe, and truly unique. Choose from a wide variety of age-appropriate themes for kids ages 3 and up. View package options at AckermanSFC.com/birthday-parties.

Ackerman SFC
members use Spring
Avenue Fitness Center
for free as part of
their membership!

spring avenue fitness

185 SPRING AVENUE, GLEN ELLYN • (630) 858-2462

membership fees

Annual memberships are valid for one year from the date of purchase.

Ackerman SFC fitness members have full access to Spring Avenue Fitness Center and group fitness classes.

INDIVIDUAL FEES (AGES 14-59)

Annual Pass..... \$245R/\$365NR
3-Month Pass \$135R/\$195NR
1-Day Pass \$7R/\$8NR

SENIOR FEES (AGES 60 & UP)

Annual Pass..... \$120R/\$180NR
1-Day Pass \$4R/\$6NR

center hours

Monday-Thursday 9am-8pm
Friday 9am-5pm
Saturday 9am-12pm
Sunday Closed

HOLIDAY HOURS

Spring Avenue members can utilize Ackerman SFC on holidays when the fitness center is closed.

July 4 Closed
September 5 Closed

what you'll find

- Treadmills, Ellipticals, Rowing Machine
- Recumbent Bikes
- Free Weights
- Dual-Station Strength Machines
- Lockers and Showers
- Equipment Orientation

SilverSneakers

If your Medicare health plan, Medicare supplement carrier, or group retiree plan includes SilverSneakers as part of your benefit package, you can work out at no extra cost. Visit the Spring Avenue front desk to learn more.



Healthier Makes Happier.

Caring for your family is an adventure - one filled with extraordinary joys and unexpected challenges. At Duly, our providers aren't satisfied simply treating symptoms - we believe you deserve a life-long partner in health, equipped with the tools, expertise and support you need to help your family flourish.



Begin your journey to a healthier, happier future at dulyhealthandcare.com/GlenEllynPD

platform tennis center

845 PERSHING AVENUE, GLEN ELLYN (WITHIN MARYKNOLL PARK)



Open year-round, the Glen Ellyn Platform Tennis Center features six courts and modern Paddle Hut. A membership is required to use the facility, but non-members are welcome to sign up for private lessons and classes (when available). Platform tennis is the only racquet sport that players can enjoy outdoors in any climate. You don't need to have prior knowledge of the game as it's easy to learn.

**2022-2023
memberships
go on sale
September 1.**

Look for details in the
Autumn Playbook.

Membership Rates & Benefits

- No additional court fees to play year-round.
- Unlimited access to court time when not programmed with leagues, lessons or events.
- Access to the Paddle Hut between 7am and 11pm.
- Privilege of making court reservations 7 days in advance. Note: four courts are reserved for the Glen Ellyn Platform Travel Club on Tuesday, Wednesday, and Thursday evenings from October-March.
- Discount on lessons.

Partial Year Membership

Valid now to August 31, 2022

Type	Resident	Nonresident	Add'l Child
Adult (18 and up)	\$200	\$260	-
Junior (6-17)	\$50	\$75	-
Family	\$450	\$540	\$15/child

Family includes 2 adults (same household) or 2 adults and 2 children (age 17 & under) per household. Youth members must be accompanied by an adult and do not receive a key to the Paddle Hut.

Purchase memberships online »

Private Lessons

Our Platform Tennis Professional, Mark Cunningham, can tailor lessons to your specific needs. Mark comes to the Park District highly skilled in the sport of platform tennis as well as tennis. USPTA and PPTA certified, Mark has over 6 years experience in coaching platform tennis and is currently ranked in the top 40 in the nation. To get started, email at gepaddlepro@gmail.com. Pricing below is listed per person; semi-private lessons are for two players.

Type	M/NM
Private 30-Minute	\$35/\$40
Private 60-Minute	\$70/\$80
Semi-Private 30-Minute	\$18/\$22
Semi-Private 60-Minute	\$35/\$40
3 & A Pro 30-Minute	\$15/\$20
3 & A Pro 60-Minute	\$25/\$30
5 Private 60-Minute	\$300/\$360

rentals

Planning your next big event? We offer a wide variety of affordable indoor and outdoor venues. Deposits may be required with some rentals. Space is available on a first come, first served basis.



Ackerman SFC

800 St. Charles Road, Glen Ellyn

Ackerman SFC has three full-size basketball courts, an indoor artificial turf field, and four batting cages available to rent for practices, games, parties and more. The facility also features an outdoor sand volleyball court and outdoor turf field. **Contact:** Ryan Miller at (630) 317-0134 for general rentals and Stacey Lim (630) 942-7275 for parties.



Athletic Fields

The Glen Ellyn Park District has fields available for soccer, baseball or softball: Ackerman Park, 800 St. Charles Road; Village Green, 130 S. Lambert Road; or Newton Park, 707 Fairview Avenue.

Village Green & Newton Parks:

(630) 942-7290

Ackerman Park:

Grass Fields: (630) 942-7288

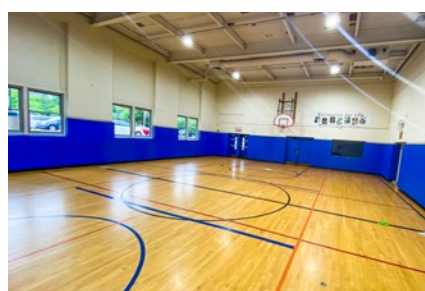
Synthetic Turf Field: (630) 317-0134



Spring Avenue Recreation Center

185 Spring Avenue, Glen Ellyn

Spring Avenue Recreation Center can accommodate a variety of events. A single classroom (up to 30 people) or the craft lab (up to 50 people) are available to rent. **Contact:** Christine Hartnett at (630) 942-7268



Main Street Recreation Center

501 Hill Avenue, Glen Ellyn

Conveniently located near downtown Glen Ellyn. Rent a single classroom (up to 30 people), double classroom (up to 50 people), or elementary-sized gymnasium. **Contact:** Christine Hartnett at (630) 942-7268



Sunset Pool

483 Fairview Avenue, Glen Ellyn

Private pool rentals are perfect for picnics, neighborhood parties, birthdays, group outings, and more. The pool is available to rent on Friday and Saturday evenings from early June through late August. **Contact:** Chad Shingler at (630) 942-7264



Maryknoll Clubhouse Party Room

845 Pershing Avenue, Glen Ellyn

Enjoy a gathering with friends, family and co-workers. Room rental includes tables and chairs. Renter may bring in own food, and alcohol is permitted with a liability contract. Maximum number of guests is 50. Room size is 25' x 40'.

Maryknoll Park Picnic Pavilion

845 Pershing Avenue, Glen Ellyn

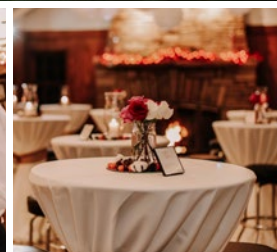
This pavilion can accommodate groups of 50 patrons or less. There is a maximum of 6 picnic tables that can be set up for your exclusive use.

Maryknoll Splash Park

845 Pershing Avenue, Glen Ellyn

The splash park is available for groups of 50 patrons or less Monday-Saturday for private rentals from 7-8:30pm. Rentals include 2 hour use of the pavilion from 6:30-8:30pm. Six permanent picnic tables are set up for your use. Available June through August (excl. July 4).

Contact: Christine Hartnett at (630) 942-7268 for Maryknoll Park rentals.



Boathouse

Lake Ellyn

645 Lenox Road, Glen Ellyn

Located just 25 miles from downtown Chicago, this unique landmark house was built in 1937 as a community facility and was fully restored to its historic beauty in 2016. Beautifully placed along Lake Ellyn, the Boathouse has been home to numerous wedding ceremonies, receptions, anniversary parties, birthdays, and more.

NOW BOOKING

Call Jeannie Robinson at (630) 942-7267 for more details.



Glen Ellyn Park District scholarship program

PARKS &
ACTIVITIES
FOR
EVERYONE

The scholarship program is available to all Glen Ellyn Park District residents that qualify. Scholarship funds can be used for non-contractual camps and classes, pool passes, trips, preschool, fitness, athletics, etc., where fees are required. Funds are not eligible for equipment purchases or rental fees. Residents who qualify are eligible to receive up to \$400 maximum per person per calendar year (January 1-December 31) based on need and availability of funds.

Applicants must be able to provide proof of residency and income as defined on the application. Copies of the application are available at gepark.org/financial-aid or by visiting the Spring Avenue (185 Spring Avenue) or Main Street (501 Hill Avenue) Recreation Centers.

A completed application form along with copies of supporting documents must be returned in person or mailed to: Scholarship Program, Glen Ellyn Park District, 185 Spring Avenue, Glen Ellyn, IL 60137. Please allow up to 3 weeks for the application process. Applicants will be notified by letter or phone of the decision made concerning the scholarship. If you have further questions, call (630) 858-2462.

explore *Your* parks

parks

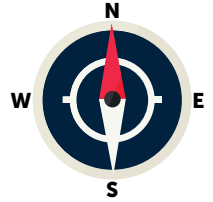
- 1 Greenbriar Park
- 2 Spalding Park
- 3 Churchill Park
- 4 Stacy Park
- 5 Ackerman Park
- 6 George Ball Park
- 7 Sam Perry Nature Preserve
- 8 Babcock Grove Park
- 9 Benjamin Gault Bird Sanctuary
- 10 Lake Ellyn Park
- 11 Ellynwood Nature Preserve
- 12 Walnut Glen Park
- 13 Frank Johnson Center
- 14 Danby Park
- 15 Prairie Path Park
- 16 Pfuetze Park
- 17 Glen Oak Park
- 18 Marie Ulhorn/President's Park
- 19 Newton Park
- 20 Sunset Park
- 21 Glen Ellyn Manor Park
- 22 Surrey Park
- 23 Maryknoll Park
- 24 Co-Op Park
- 25 Panfish Playground
- 26 Village Green Park
- 27 Lake Foxcroft Park

facilities

- A Ackerman Sports & Fitness Center
- B Main Street Recreation Center
- C Spring Avenue Recreation Center
- C Spring Avenue Fitness Center
- C Spring Avenue Dog Park
- D Holes & Knolls Mini Golf + Splash Park
- D Platform Tennis Facility
- E Sunset Pool
- F Lake Ellyn Boathouse

schools

- G Ben Franklin School
- H Forest Glen School
- I Churchill School
- J Hadley Junior High
- K Glenbard South
- L Glenbard West
- M Glen Crest
- N Lincoln School
- O Memorial Field
- P Park View School



park features

• Denotes also lined for Pickleball



		Walking Paths/Trail	Playground	Baseball/Softball Field	Basketball Court	Tennis Court (Hard Court)	Pickleball Court	Platform Tennis	Sand Volleyball Court	Synthetic Turf Athletic Field	Open Play Area/Grass Fields	Outdoor Fitness Equipment	Picnic Shelter	Outdoor Pool	Fishing Pier	Splash Park	Mini Golf	Disc Golf	Skate Park	Ice Skating	Sled Hill
Ackerman Park	800 St. Charles Rd.	•	•	•					•	•	•	•									
Babcock Grove Park	324 Linden St.		•								•										
Churchill Park	271 St. Charles Rd.	•											•								
Co-Op Park	515 Wilson Ave.		•								•										
Danby Park	280 Duane St.	•	•								•										
Ellynwood Preserve	801 Ellynwood Dr.																				
Benjamin Gault	625 N. Main St.	•																			
George Ball Park	801 Elm St.					•					•		•								
Glen Ellyn Manor Park	375 Illinois St.	•	•								•										
Glen Oak Park	350 Woodstock Ave.		•								•										
Greenbriar Park	430 Second Place Glendale Heights	•	•								•		•								
Frank Johnson Center	490 Kenilworth Ave.		•								•										
Lake Ellyn Park	645 Lenox Rd.	•	•								•				•					•	
Lake Foxcroft Park	25540 Lambert Rd.	•	•								•		•		•					•	
Main Street Rec. Ctr.	501 Hill Ave.		•		•						•										
Maryknoll Park	845 Pershing Ave.	•	•					•			•		•			•	•	•			
Newton Park	707 Fairview Ave.		•	•	•	•				•	•		•						•	•	•
Panfish Playground	Maintained by GEPD		•								•										
Sam Perry Preserve	735 Grand Ave.																				
Pfuetze Park	400 N. Park Blvd.										•										
Prairie Path Park	565 Steward Ave.																				
President's Park	265 Cumnor		•								•										
Spalding Park	22W325 2nd St.		•								•		•								
Spring Avenue Rec. Ctr.	185 Spring Ave.										•										
Stacy Park	50 Geneva Rd.		•		•						•		•						•		
Sunset Park	483 Fairview Ave.		•			•					•			•							
Surrey Park	95 Surrey Dr.		•		•						•										
Village Green Park	130 S. Lambert Rd.		•	•	•	•	•				•		•			•					
Walnut Glen Park	860 Walnut St.		•																		



Play on Clay!

Clay Tennis Court Season Passes

A season pass, valid April 1 to November 1, must be purchased annually to use the clay tennis courts at Lake Ellyn Park. Pass holders get a roster of other players and volunteer for minor court maintenance. The courts are open daily, dawn to dusk.

The season pass fee may be paid online or at Spring Avenue Recreation Center starting March 1; however, members must pick up their key in-person at Spring Avenue Recreation Center. (bt)

R/NR: \$55/\$80

#/Link: [125544](#)

Outdoor Tennis & Pickleball Courts

Tennis Courts

Hard court tennis courts are free for public use when they are not scheduled for Park District programs or lessons. Nets are taken down each winter and replaced each spring in mid-March, weather permitting. Outdoor tennis court lights, where available, are on mid-March through mid-November.

George Ball Park

800 Elm Street. Six tennis courts with timer-controlled lights. Close daily at 10pm.

Sunset Park

483 Fairview Avenue. Two tennis courts with timer-controlled lights. Close daily at 10pm.

Newton Park

707 Fairview Avenue. Two unlighted tennis courts. Close daily at dusk.

Pickleball Courts

Outdoor pickleball courts are free for public use when they are not scheduled for Park District programs or lessons. Nets are taken down each winter and replaced each spring in mid-March, weather permitting. Courts are available on a first-come, first-served basis. Please limit play when courts are in demand as a courtesy to other players.

Village Green Park

130 S. Lambert Road. Six unlighted pickleball courts.

Newton Park

The unlighted tennis courts at Newton Park, 707 Fairview Avenue, are also lined for pickleball. Note, the nets cannot be lowered.



The Fun Starts Here



Community-Based Recreational Programs and Inclusion Services For Park District Programs

WDSRA RECREATIONAL & SOCIAL PROGRAMS: IN-PERSON & VIRTUAL

WDSRA provides fun, engaging recreational and social programs, trips, and special events for children, teens, and adults with special needs. Programs are structured to allow everyone to participate at their own ability level. Through WDSRA each individual has the opportunity to grow personally, connect with their community and discover their potential.

- Sports
- Special Olympics
- Music and Dance
- Art and Drama
- Bowling
- Social Clubs
- Special Events
- Adaptive Sports
- Overnight Outings
- Weeklong Trips
- And much more!

INCLUSION SERVICES

Inclusion Services are designed to provide the least restrictive environment while providing the maximum opportunity to participate in regular park programs. There is no charge for WDSRA support. To register for services, simply indicate that special accommodations are needed on the park district registration form. Two-week advance notice is requested for inclusion support.



BE A PART OF THE FUN!

We are looking for people who are optimistic and enthusiastic.

Flexibility. Training. Choice.



For details visit
www.wdsra.com -
Join Our Team.

Western DuPage Special Recreation Association
630-681-0962 • www.wdsra.com

SUMMER 2022 • 90

district policies

DEFINITION OF RESIDENCY

Not all Glen Ellyn residents are in the Park District. Anyone living within the geographic boundaries of the Glen Ellyn Park District is considered a resident. Glen Ellyn Park District residents, via property taxes, make financial contributions to the operation of the park system. Non-residents are charged higher fees for programs than residents to compensate for property tax disparity.

Residents of Glen Ellyn who are not residents of the Glen Ellyn Park District or any other park district may receive all the privileges of belonging to the Glen Ellyn Park District by paying the equivalent of Park District taxes annually. This membership allows for priority registration, pool passes, and any other services provided to our residents at the resident rate.

WAIVERS OF LIABILITY

To participate in any Glen Ellyn Park District program, you must sign a waiver releasing the Park District of any liability.

REFUNDS, CANCELLATIONS

The Glen Ellyn Park District reserves the right to cancel, postpone or combine classes, or change instructors. If insufficient enrollment causes a class to be canceled, notification will be given 7 days in advance, and full tuition refunded. Withdrawals prior to the start of a class will be assessed at minimum a \$5.00 service charge. Refunds for moving, injury/illness, or schedule changes will be pro-rated according to the date the request for a refund is made.

COMMITMENT TO QUALITY

To encourage first time participation as well as repeat participation, the Park District has a refund policy highlighted by a satisfaction guarantee. This special refund policy provides us with timely feedback about dissatisfaction regarding our services. We can then take prompt action to improve services. If you are not completely satisfied, tell us and we will either: invite you to repeat the class at no charge; allow you a credit that can be applied to another program; issue you a full refund.

Our guarantee is based on fulfilling our promise to deliver the published expectations describing the service you have used. A refund will be granted if you were dissatisfied with the experience due to circumstances under the Park District's control.

Requests for the above-mentioned options must be made before the midpoint of the program or within two weeks of a single meeting activity. All refund requests must be submitted in writing and returned to the Spring Avenue Recreation Center or the Main Street Recreation Center. Satisfaction Guarantee does not apply to trips, special events with prepaid admissions and tickets, and athletic programs where equipment has already been ordered.

FINANCIAL ASSISTANCE

The Glen Ellyn Park District recognizes there are community residents who may suffer economic setbacks that might preclude their participation in Glen Ellyn Park District programs. Financial assistance forms are available at the Spring Avenue and Main Street Recreation Center. All requests remain confidential. If you have questions, please call (630) 858-2462.

A referral for additional scholarship assistance is also available to qualified resident children under the age of 18 through the Milton Township Youth Committee's Family Youth Scholarship Fund.

INSURANCE

The Glen Ellyn Park District does not provide medical insurance coverage for individuals who participate in our programs or use our facilities. To do so would make programs and user fees cost prohibitive.

AMERICANS WITH DISABILITIES ACT

The Americans with Disabilities Act (ADA) prohibits discrimination on the basis of a disability. The Glen Ellyn Park District will make reasonable accommodations in recreation programs to enable participation by an individual with a disability that meets essential eligibility requirements for that leisure program and facility.

If you have questions or believe you have been unfairly discriminated against by the Park District, please contact Nick Cinquegrani at (630) 942-7257. Those who use the Telecommunications Device for the deaf may reach the Park District by calling the Illinois Relay Line at (800) 526-0844.

NON-DISCRIMINATION STATEMENT

The Glen Ellyn Park District prohibits discrimination in all its programs and activities on the basis of race, color, national origin, gender, religion, age, disability, political beliefs, sexual orientation, marital or family status.

BEHAVIOR POLICY

Participants are always expected to exhibit appropriate behavior. The following guidelines have been developed to help make Park District programs safe and enjoyable for all participants. Additional rules may be developed for specific programs and athletic leagues as deemed necessary by staff. Participants shall:

1. Show respect to all participants and staff, take direction from staff.
2. Refrain from using abusive or foul language.
3. Refrain from causing bodily harm to self, other participants or staff.
4. Show respect for equipment, supplies and facilities.

A positive approach will be used regarding discipline. Staff will periodically review rules with participants during the program session. If inappropriate behavior occurs, prompt resolution will be sought specific to each individual situation. The Park District reserves the right to dismiss a participant whose behavior endangers the safety of themselves or others.

ADULT'S CODE OF ETHICS

- I will encourage good sportsmanship by demonstrating positive support for players, coaches, and officials at every game and practice.
- I will place the emotional and physical well-being of my child ahead of my personal desire to win.
- I will insist that my child play in a safe and healthy environment.
- I will require that my child's coach be trained in the responsibilities of being a youth sports coach.
- I will remember that the game is for youth – not adults.
- I will do my very best to make youth sports fun for my child.
- I will ask my child to treat other players, coaches, and officials with respect regardless of race, gender, creed, or ability.
- I agree with these rules and understand that the Glen Ellyn Park District Associations have adopted a Zero-Tolerance Policy and that not abiding by these rules may restrict me from attending future games and practices.

PETS AT EVENTS

The Glen Ellyn Park District asks that everyone please exercise good judgment and leave pets at home when attending events that draw large crowds. Please show respect for other people, yourself and your pet by helping the Park District maintain a safe and healthy environment where all people have the opportunity to participate and enjoy themselves.

NOTICE OF POSSIBLE CHANGES IN PLAYBOOK LISTINGS

The policies, procedures, requirements, programs, fees and facility availability contained in this Playbook represent Park District program and policies at the time of publication. Sometimes changes in the programs (including fees, locations, times, etc.) and policies are necessary after Playbook publication but prior to program commencement or facility operation.

To provide the best services, programs and facilities to the public, the Park District reserves the right to add, to change, modify or delete any program or policies after they have been published. The Park District will attempt to make a reasonable effort to give prompt public notice of any material changes in the programs and policies, but notice cannot be assured. We apologize for any inconvenience this may cause and appreciate your understanding and cooperation.

PHOTO/VIDEO POLICY

The Glen Ellyn Park District uses pictures or videos of participants to publicize recreation opportunities in our social media, print, and online marketing. If you do not want a picture taken, please tell our photographer. If the picture has already been taken, please contact the Park District at (630) 942-7260.