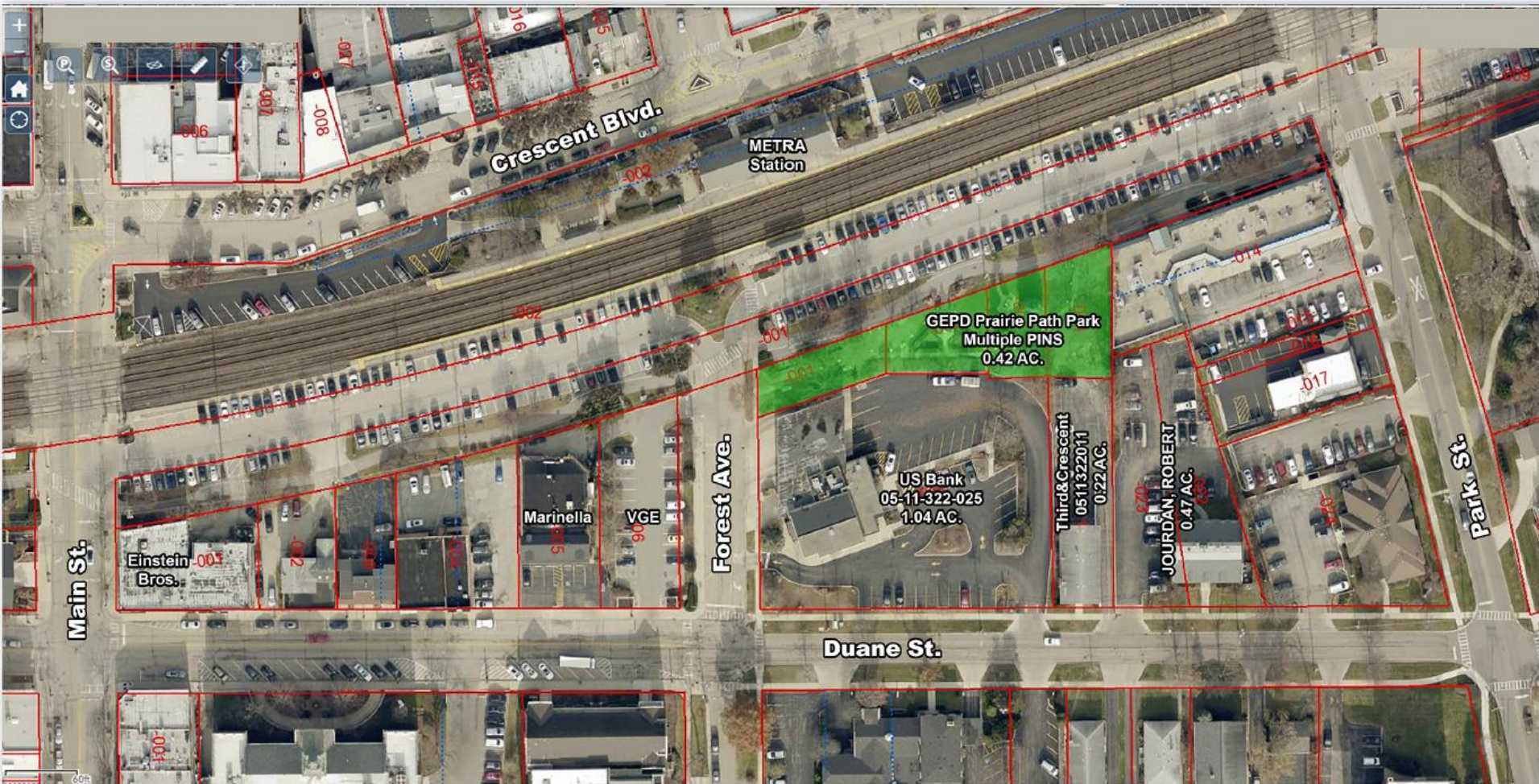


The community of Glen Ellyn

Downtown Park & Event Space





Site Context

Executive Summary

Project

- The former US Bank site became available to the market
- Village purchased the property for \$1.65 million
- The Park District and Village have been working in partnership to develop as greenspace
- Adjacent to a parking garage, Metra rail, and Prairie Path
- Once in a generation opportunity
- Transformational project that would be a civic hub to downtown Glen Ellyn and bring stimulus and business development

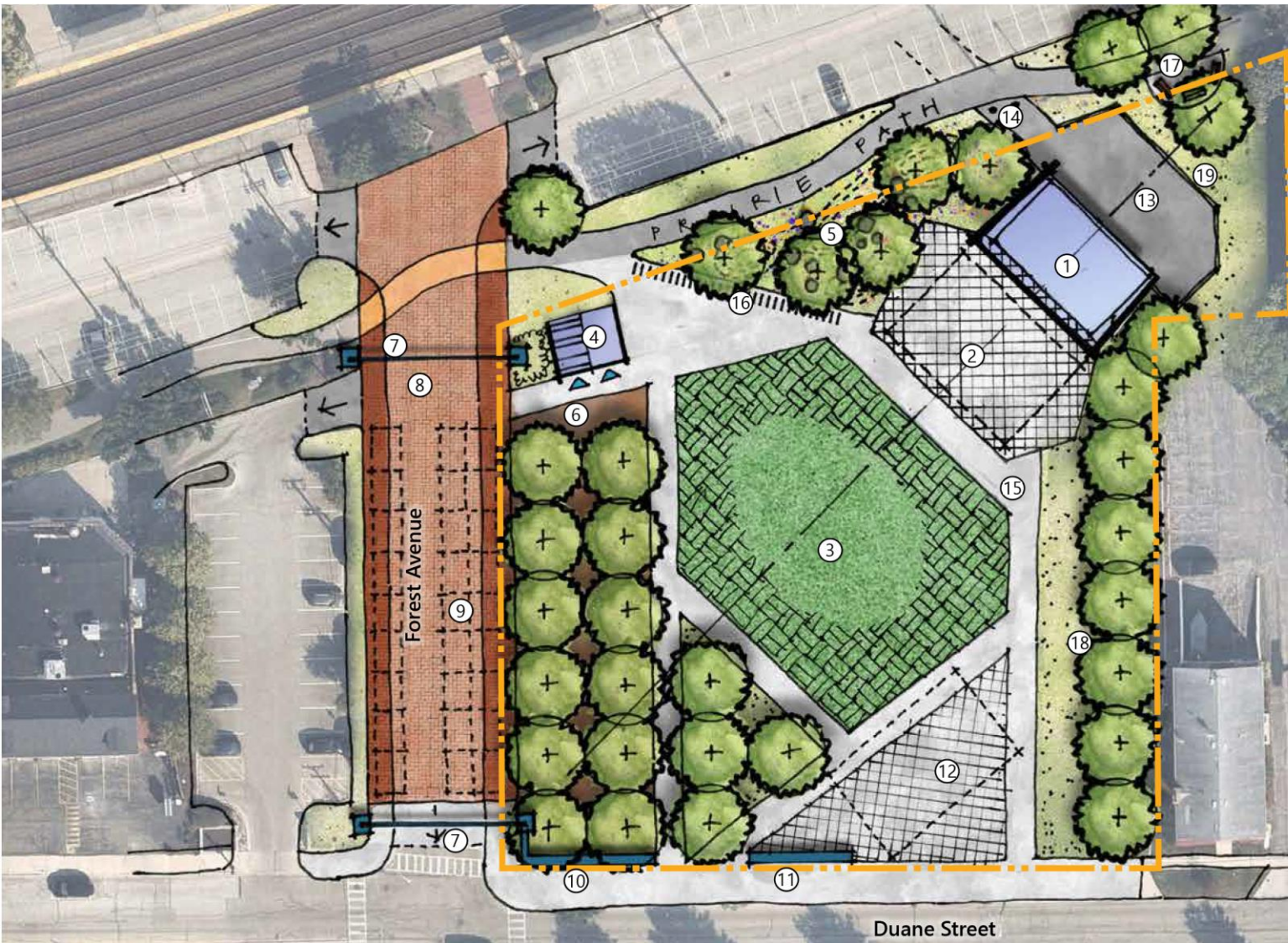
Funding

- Village and Park District combined resources allow for a construction of a Phase 1.
- To achieve a complete project with stage and restrooms, there is a construction gap.

GAP: +/- \$1,900,000

- Seeking funding through: grants, donations, and alternate funding sources





LEGEND

- ① Stage 30'x50'
- ② Concrete Paving for VIP Chairs-Dance Floor-Polar Plaza Ice Rink (40'x60') Synthetic Ice
- ③ Lawn (±100'x130') 12,000 sf/750people, 16 sf/person
- ④ Restroom & Storage Building
- ⑤ Earth Mounds & Granite Boulder Play Area
- ⑥ Picnic Grove with Decomposed Granite Paving
- ⑦ Gateway Arch & Masonry Columns
- ⑧ Permeable Paver Road & Speed Table
- ⑨ Farmer's Market Tents (10'x15', 27ea.)
- ⑩ Masonry Seat Wall
- ⑪ Seat Wall & Plaza Signage
- ⑫ Food Trucks or Vendor Tents or Polar Plaza Ice Rink
- ⑬ Service Drive to Stage
- ⑭ Drop Bollards
- ⑮ Concrete Walk
- ⑯ Bike Racks (30 ea)
- ⑰ Seating area
- ⑱ Landscape Buffer with Trees
- ⑲ Screen Fence



SCALE IN FEET
1"=40'



Preliminary Concept Plan



Inspirational Images

Transformational

Community Engagement

Flexible

Seasonality

Whimsical

Porous

Fundraising

Phase 1

Endowment