



GLEN ELLYN
PARK DISTRICT



LOOKING BACK

A YEAR IN REVIEW

GLEN ELLYN PARK DISTRICT • ANNUAL REPORT

2015

A Message From the President

The Glen Ellyn Park District is very proud of its accomplishments for 2015. The following pages detail our many achievements and our efforts at maintaining current assets while continuously improving what we do to help make this a great community.

From Ackerman Sports and Fitness Center to our large community parks to our smaller neighborhood parks, every element of our parks and facilities needs constant attention from our dedicated staff. This commitment means our residents can continue to enjoy the benefits of these wonderful amenities.

Your Park District offers something for everyone and the vast majority of people living within Park District boundaries take advantage of those offerings on a regular basis. I am particularly thrilled to see the number of kids participating in our sport programs and am always thankful for our volunteers who work tirelessly to make those programs possible. Speaking of volunteers, my hat goes off to my fellow commissioners who are extremely engaged and give their time freely to keep the District progressing each and every year.

2015 was an ambitious year. Some of the many projects were the installation of a synthetic turf field at Newton Park with the financial support of the Golden Eagles, Lakers, Bulldogs and Glenbard High School School District 87; an updated intergovernmental agreement with District 87; renovating Spring Avenue Recreation Center Safety Village with a grant; developing a trail connection from the Great Western Trail into Ackerman Park, funded by a grant from ComEd; and beginning restoration of the Lake Ellyn Boathouse. 2016 will be equally ambitious. The Glen Ellyn Park District has many exciting projects that will ensure our parks system continues to be the envy of many. Athletic lighting improvement will take place at Ackerman Park where existing 40 year old lighting will be replaced and reconfigured to allow greater use of the open space and reduce light pollution; a permanent picnic shelter will be constructed at Maryknoll

Park to take the place of a temporary tent; shade and protective covers will be added to spectator areas at Village Green near the larger baseball fields. District 87 will contribute as well to the improvements at Village Green.

In September, 2015, the Park District initiated the process of upgrading Lake Ellyn Park and restoring the Lake Ellyn Boathouse to its historical beauty. Construction will continue through June with anticipated completion by the weekend of the annual Cardboard Regatta and just in time for the 4th of July. This project is an outcome that reflects public direction and community input over the past several years and is being paid through operating surplus and non-referendum funding.

Whether you are young or an active adult, a recreational athlete or a competitive player, a passive patron or a program participant, the Glen Ellyn Park District has a direct impact on the quality of life in our community. I hope you will take the time to enjoy the many parks, facilities, and programs that your Park District has to offer.

Julia Nephew

Julia Nephew, President
Board of Commissioners
Glen Ellyn Park District

MISSION STATEMENT: The Park District's mission is driven to foster diverse, community based leisure opportunities, through a harmonious blend of quality recreation programs, facilities and open space which will enhance the quality of life into the future.

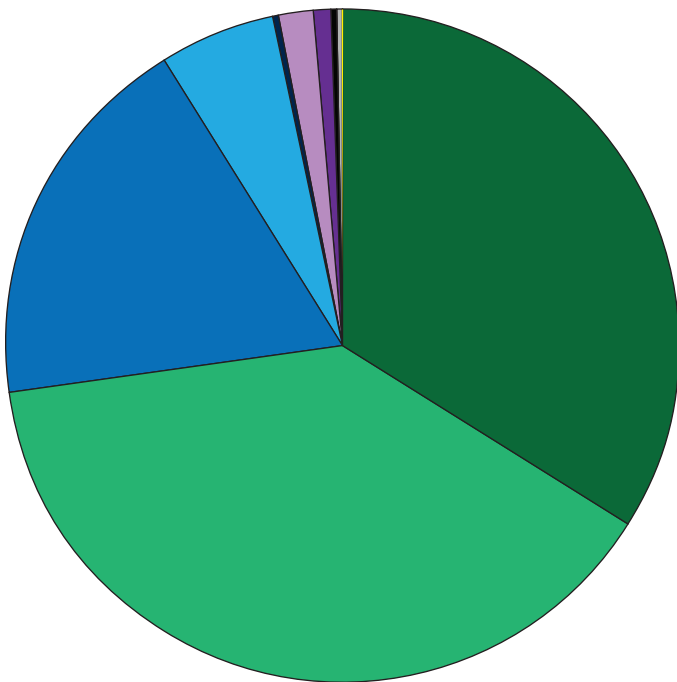
BOARD OF COMMISSIONERS



ANOTHER SUCCESSFUL FINANCIAL YEAR

2015 Glen Ellyn Park District REVENUES & EXPENDITURES

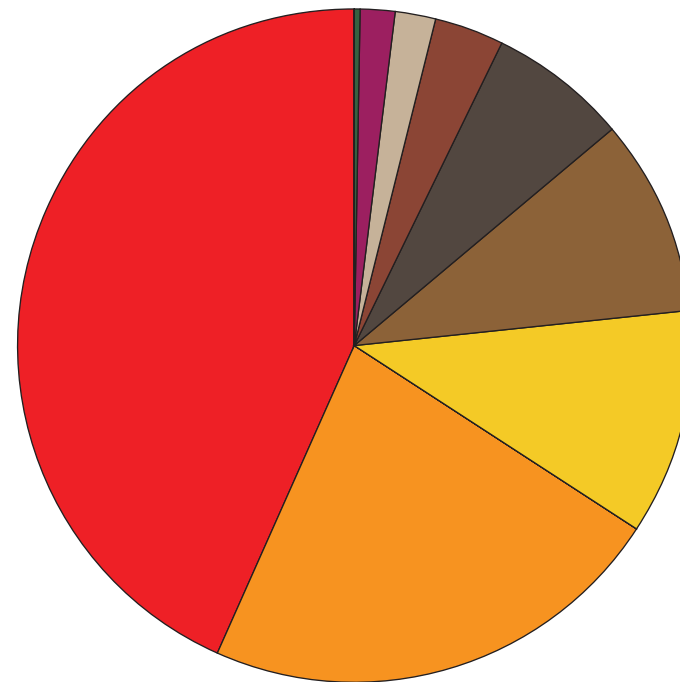
REVENUE: Total \$9,078,533*



Property Tax Receipts: \$3,086,017	Other Taxes: \$166,258
Program Fees: \$3,535,220	Concessions: \$73,282
Charges for Services: \$1,669,296	Interest Income: \$18,412
Rentals: \$498,773	Grants & Donations: \$7,700
Miscellaneous Income: \$18,733	Licenses & Permits: \$4,830

The annual operating budget produces **surplus revenue** which contributes to capital replacements and improvements such as parking lot repairs, playground replacements, and athletic field maintenance.

EXPENSES: Total \$ 7,674,064*

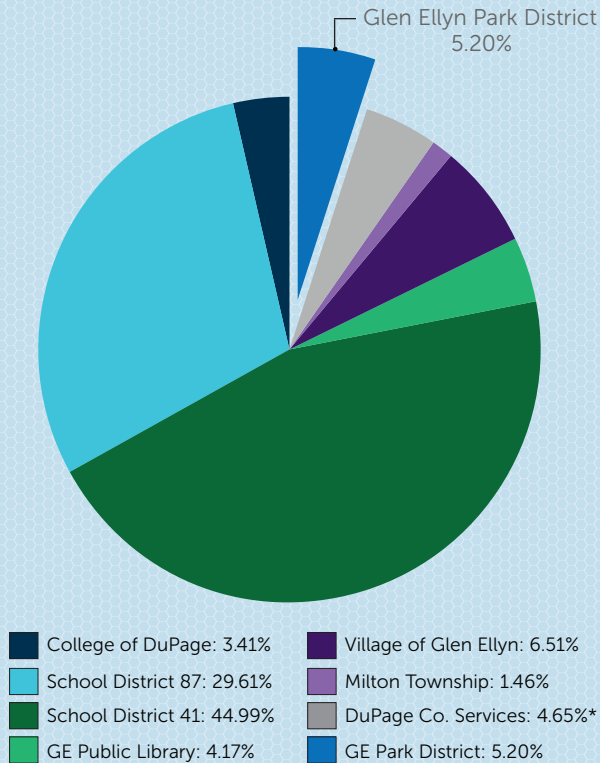


Salaries & Wages: \$3,317,472	Miscellaneous: \$274,911
Contractual Services: \$1,713,225	Insurance: \$148,311
Capital: \$7,843	Building & Landscaping: \$123,000
Employment: \$836,511	Equipment: \$24,086
Materials & Supplies: \$728,112	Contractual Labor: \$10,238
Utilities: \$496,842	

*Preliminary Corporate and Recreation Fund activity for the 2015 fiscal year through 2/16/2016. Totals are net of transfers.

YOUR PARK DISTRICT

How Your Tax Dollars Are Allocated



Did You Know?

The Park District's tax rate is **lower** than most surrounding comparable communities such as:

- Addison
- Carol Stream
- Lisle
- Lombard
- Warrenville
- Wheaton
- Winfield
- Wood Dale

The Park District was able to refinance outstanding bonds, saving the taxpayers approximately \$180,000 between 2015 and 2017 largely due to its strong fund balance and AA+ bond rating.

Planning for the Future

Several years ago, many of the current Park Board members prioritized stabilizing and solidifying the financial condition of the Glen Ellyn Park District while maintaining its current assets. This effort included achieving an operating budget that generates greater revenue than expenses, establishing and meeting the requirements of a sensible fund balance policy, creating an asset replacement account with funds generated through operations, developing an ambitious business plan for Ackerman Sports and Fitness Center, and resolving the Ackerman roof predicament. The Park Board initiated and formed the Citizens' Finance Committee, comprised of Glen Ellyn professionals in the financial and business community, whose task was to oversee and provide guidance regarding Park District finances. Finally, the District's

long-term capital replacement needs, along with a funding plan, were identified. As a result of these efforts, the Park Board is confident that the current financial condition of the Park District is favorable and presents financial stability and the means for the District to maintain its current assets through user fees and its current operating tax levy while still offering and providing outstanding recreational opportunities and programs.

AA+ BOND RATING FROM STANDARD POOR'S

In 2014, the Glen Ellyn Park District was awarded an AA+ bond rating.

- » One of just 15 Illinois Park District's to achieve this rating or equivalent.
- » Reflects strong & sound financial practices.
- » May allow for lower interest rates on bond issues.

Community Events

Park District events bring the community together. These 2015 events are just a sampling of the activities that were made possible through your tax dollars and generous donations from our sponsors.

» Inaugural 2K for Kids Fun Run

Over 100 kids compete in exciting, age-appropriate challenges over a 1.25 mile race course.

» Touch-a-Truck

Kids get their hands on the big trucks they see driving around town including dump trucks, fire engines, and police cars.

» Inaugural Chocolate, Cheese & Wine Tasting

Adults age 21+ enjoy chocolate, cheese, food and wine samples from around the world. Introduced in 2015, this event is in partnership with the Glen Ellyn Chamber of Commerce.

» Movies in the Parks

Families enjoy evenings under the stars in our community and neighborhood parks all summer long with six free family-friendly movies to watch! In the spring, fall and winter, indoor movies are shown on the turf at Ackerman SFC or in the gym at Main Street Recreation Center.

» Summer Jazz in the Park

Relaxing nights out with wonderful music provided by the Glen Ellyn Jazz Ensemble playing Big Band tunes. A touch of Ravinia in Glen Ellyn!

» Afternoon Festivities

15th year of family-friendly fun after the Fourth of July parade with penny carnival games, rides, food and live music. Over 800 community members attended in 2015.

» Poochpalooza

The 5th annual dog-focused event featuring disc dogs, pet-friendly vendors, a pet photo booth, a pet costume contest, and pet adoptions.

» Free Week at Ackerman SFC

During the 3rd annual Free Week, non-members enjoyed all the amenities the Ackerman SFC has to offer such as rock climbing, an indoor multi-purpose turf, gymnasium, and fitness center.

» Turkey Trot

27 years of burning off calories before sitting down to Thanksgiving dinner. Over 400 runners participated in this year's race, collecting many bags of food donations for the Glen Ellyn Food Pantry.

» Polar Express Storytime Train

538 kids and adults hopped aboard the Polar Express Storytime Train for a fantastical time of wonder and magic as they journeyed to the "North Pole."

» Boo Bash

Kids enjoy a trick-or-treat trail complete with costumed characters at the annual Boo Bash.

» The District also assists many groups in the community with their events such as:

Alliance of Downtown Glen Ellyn, Glenbard West Boosters, District 41 PTA(s), Backyard BBQ, Spellapalooza, WDSRA, Chamber of Commerce, Glen Ellyn Historical Society, Glen Ellyn Public Library, DuPage Kiwanis, Glen Ellyn Lions Club, and more!



Supporting Local Businesses

The Park District reinvests back into the community by supporting local businesses and vendors whenever possible.

Activities at the Park District, such as special events and tournaments, attract crowds from within and around the community. Increasing the number of visitors to Glen Ellyn helps to build and stimulate the local economy.



BY THE NUMBERS

» Bringing the Community Together

- 70+ special events offered by the Recreation Department (45 of which were free to attend!)
- 13 parks included in the Trails & Trivia challenge, designed to get kids (and adults) outdoors
- 385 wristbands sold at Afternoon Festivities
- 100 kids participated in the first ever 2K for Kids Fun Run, complete with obstacles, bibs & snacks
- 2,100+ community members registered for **at least one** special event (excludes free events produced by the District)

» Well-Maintained Parks

- 263 acres maintained each week at 29 different community and neighborhood parks
- Over 100 newly planted trees
- 53 trees removed due to emerald ash borer
- 29 days of ice skating at Lake Ellyn, 15 at Lake Foxcroft, 41 on the Newton hockey rink and 31 on the Newton ice skating rink
- Around 40 acres of natural areas actively managed for invasive plant species

» Staying Fit

- 4,636 fitness members at Ackerman SFC
- 50+ group fitness classes offered each week
- 827 running enthusiasts in the Freedom Four™
- Over 103,000 fitness & walking track member visits in 2015
- 33% increase in personal training revenue



» People Serving our Community

- 7 volunteers on the Board of Commissioners
- 7 volunteers on the Ackerman Advisory Committee
- 7 volunteers on the Citizens Finance Committee
- 28 full-time employees District-wide
- 683 part-time and seasonal employees

In 2015, the Glen Ellyn Park District employed **over 200** Glen Ellyn residents at our facilities. Employment at the Park District is often the first work experience for teenagers in the community!

» Communicating with You

- 252 pages in seasonal programs guides
- 14,000+ Activity Guides delivered to residents each season
- 60+ District eNewsletters delivered to inboxes
- 6 Community Voice columns
- 80+ pages maintained on www.gepark.org
- 2nd Park District "Looking Back" Report created

» Our Online Presence

- 9,100+ patrons registered for **at least one** program in our registration system
- 183,050+ visits to www.gepark.org
- 1,900+ "likes" and over 200 posts on Facebook
- 15,000+ views of the Virtual Activity Guides

» Mini Golf!

- Over 18,000 rounds of mini golf played



» Splish Splash!

- 4,079 pool memberships sold
- 325 in Gators swim program
- 694 kids learned to swim
- 18,700+ visits to the Maryknoll Splash Park
- 140+ community members hired to work at Sunset Pool during the summer months

» On the Financial Side

- The Park District estimates to have a positive surplus in operations of more than \$970,000 that will be used to fund capital replacements and improvements in future years. Generating surplus from operations reduces the Park District's reliance on the issuance of debt.
- The Park District was able to refinance outstanding bonds, saving the taxpayers approximately \$180,000 between 2015 and 2017 largely due to its strong fund balance and AA+ bond rating.

» Happy Campers

- 2,800+ kids participated in summer camps
- 57 different summer camps offered

» Time to Celebrate!

- The Glen Ellyn Park District turned 96!
- Ackerman SFC celebrated it's 5 year anniversary
- Lake Ellyn Boathouse turned 78 years old
- 81 event rentals at the Lake Ellyn Boathouse

- The FREE Block Party Wagon was utilized by residents **53** times from April to November 2015.

» Scholarships

- **\$9,500+** dollars raised for scholarships through programs and special events
- **215+** families experiencing financial hardships assisted with **\$28,456** in scholarship funds
- **269** free pool passes distributed

» Jump, Swing, Dance and Tumble

- **309** kids participated in dance classes
- **700+** kids participated in gymnastics classes
- **44** birthdays celebrated with a gymnastic party

» Grab Your Racquet

- **267** platform tennis members
- **14** outdoor tennis courts available for use (8 of which are lighted courts and 2 which are clay)
- **4** platform tennis courts available at the Platform Tennis Facility (heated for year-round play)

» It's Easy Being Green

- **422** pounds of holiday lights kept out of landfills thanks to the holiday light recycling program with Elgin Recycling (www.elginrecycling.com)
- **540+** pumpkins composted in a joint effort with SCARCE and the Glen Ellyn Environmental Commission.



Founded in 1919, the Glen Ellyn Park District (GEPD) spans approximately **10.6^{SQ.} MILES** and serves more than **36^K RESIDENTS** in DuPage County and Milton Township. GEPD owns or manages **29 PARK SITES** with active recreational amenities, 4 miles of trails, a swimming facility, two recreation centers, one sports complex and over **263 ACRES** of natural areas.



SPECTATORS ENJOY WATCHING THE LAKE ELLYN CARDBOARD REGATTA FROM THE BOATHOUSE DECK



Natural Area Restoration Projects

The Glen Ellyn Park District is dedicated to helping sustain plant life for future generations by protecting and restoring indigenous natural communities such as prairies, woodlands and wetlands. Restoration projects at the Glen Ellyn Park District are primarily focused on the removal of invasive non-native plants and reintroducing native trees and plants. This year:

- **150 different species of native plant seeds were harvested or donated**
- **Around 500 volunteers helped with natural area restoration projects.**
- **1,050 native plant “plugs” and 150 native trees and shrubs were planted in natural areas.**

» Prescribed Burns

Three prescribed burns were conducted in 2015. Prescribed fire simulates historic, naturally occurring wildfires that stimulate growth of native plants and grasses while reducing invasive trees and non-native, weedy plant species. Burns were performed at Churchill Park and in the Ackerman Park wetland. In addition, the Park District performed its first burn in the natural area at Lake Ellyn Park!

» Problem Based Learning (PBL)

Staff worked with School District 41 on ten different problem based learning

projects related to natural resources including topics such as: bats/white-nose syndrome, composting, flooding at Churchill Park, invasive plants, monarch recovery, and sustainable farming.

» Emerald Ash Borer (EAB)

The District continues to remove dead and hazardous ash trees from parks and natural areas. On-going efforts are made to seed/plant a diverse native understory of trees and shrubs in wooded areas affected by EAB.

» No Mow Zones

In 2014, the Park District began the process of restoring and recreating more naturalized communities within the no mow zones. Efforts have been made in areas including the Maryknoll oak savanna, Lake Ellyn Park, and Churchill Park. These areas have been planned and intentionally placed to help promote the natural regeneration of the urban forest or prairie.



Natural areas like Churchill Park improve air and water quality for humans and create habitats for wildlife.



GLEN ELLYN: The Village of Volunteers

In 2015, the Glen Ellyn Park District Board of Commissioners recognized the following individuals for their dedication, efforts, volunteerism and commitment to the Glen Ellyn Park District.

- | | | |
|-------------------------------|----------------------|-------------------------|
| Kelly Swartz | Jim Craig | Denis Kania |
| Kevin Cooke | Jim Owens | Lisa Mertz-Erwin |
| Richard Dunn | Dave Pugsley | Michael Polito |
| Mary Beth Bletsas | Joe Cardona | Susan Terwedow |
| Gail Bode | Scott Daniela | Jill Voegtle |
| Katie Cairns | Kim Schwegel | Nick Ruffo |
| Christine Giunta-Mayer | Mitch Adamus | Andrew Ruffo |
| Scott Dixon | Jeremy Burk | |

The Park District is truly fortunate to have a large number of community members who give freely of their time, working behind the scenes to help make our programs successful. We would like to thank each and every person whose time and talent have made our agency what it is today.



CITIZENS' FINANCE COMMITTEE

The Park Board initiated and formed the Citizens' Finance Committee, comprised of Glen Ellyn professionals in the financial and business community, whose task was to oversee and provide guidance regarding Park District finances. The committee has been instrumental in review, advising and establishing financial direction and oversight. These efforts have contributed to the financial stability of the district both present and for the future.

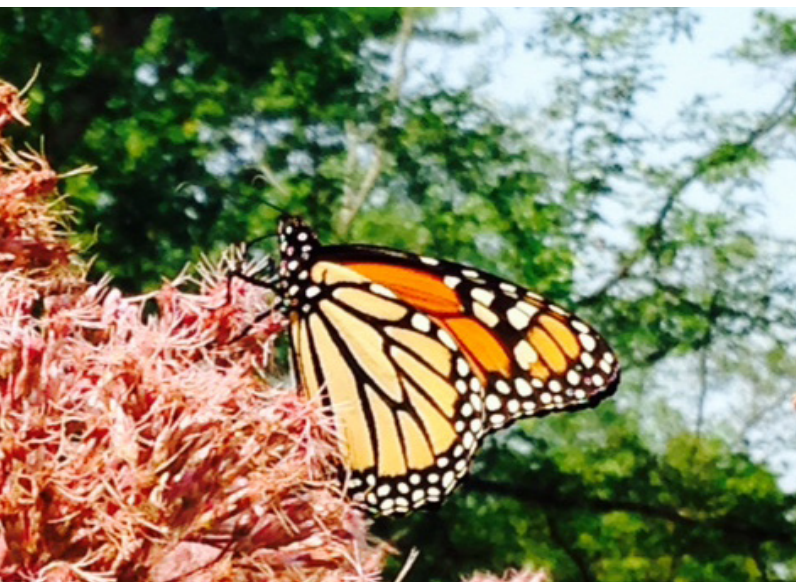
Thanks to Don St. Clair, Tom Lettenberger, Charlie Prisco, Allison DeMong, Christina Fine, Leo Lanzillo, and Michael Graham.

ACKERMAN SFC ADVISORY COMMITTEE

Formed in 2015, the committee is comprised of Ackerman SFC users and members whose task is to provide guidance and advice regarding the Ackerman Sports & Fitness Center.

Thanks to Beth Lilly, Dan Anderson, Egil Fossilen, Gina Walsh, Mark Reinke, Mary Carrier, and Viktoria Himsel.

THANK YOU, RICHARD DUNN!
 A special thank you to Richard Dunn for serving on the Park District Board of Commissioners from 2011-2015 and his years of volunteerism in Glen Ellyn. "No one is more cherished in the world than someone who lightens the burden of another." - Author Unknown



Partnerships

The Glen Ellyn Park District actively develops relationships with other government agencies, not-for-profits and businesses in order to benefit residents through cooperative services, programs and facilities.

» Year of the Monarch

Thanks to the efforts of third graders at Ben Franklin School, the Glen Ellyn Park District teamed up with the Village of Glen Ellyn, Glen Ellyn Environmental Commission, Glen Ellyn Public Library, Willowbrook Wildlife Center and Ben Franklin School on the Glen Ellyn Monarch Project, a cooperative effort to create Monarch waystations in Glen Ellyn and to encourage residents to plant milkweed to save this declining species.

» Gardens for Giving

The Glen Ellyn Park District, Glen Ellyn Environmental Commission, and District 41 partnered to develop the "Gardens for Giving," a pantry-based garden in the community gardens at Village Green Park. The garden's fresh produce benefits the Glen Ellyn Food Pantry.

» WDSRA

The Western DuPage Special Recreation Association (WDSRA) is a collaboration of nine park districts including Glen Ellyn, Wheaton, Carol Stream, Naperville, Winfield, West Chicago, Roselle and Bloomingdale. WDSRA offers direction, programming, and support for the special needs patrons in relation to recreation. Programs include assistance to special needs participants in Park District programs, adapt-a-sports, life skills,

special events and fitness/well-being.

» Glenbard High School District 87

The Park District and District 87 entered into a combined intergovernmental agreement allowing shared use of facilities and fields. This benefits both constituents while maximizing community assets and minimizing expenses.

» Cooperative Programs

The Park District works with other local park districts, as well as organizations within the community, in order to offer a wider variety of programs to our residents. This year, the Park District was able to offer over 40 additional programs, including a boys part-time travel basketball team with the Glen Ellyn Titans, thanks to these efforts.

» Village of Glen Ellyn

The Park District and the Village continue to collaborate and partner to improve services and reduce expenses. Examples include stormwater management, marketing, snow removal storage, open space, planning and development, environmental services, special events, and programming.

Community & Neighborhood Parks & Facilities

Newton Park Synthetic Turf Field Installed

The installation of a synthetic turf field at the upper Newton football field was completed in August, 2015. This was a collaborative effort between the Park District, School District 87, Golden Eagles, Lakers soccer, and Bulldogs lacrosse. It will serve community organizations including football, lacrosse, soccer, field hockey, rugby and other activities.

Ackerman Park: Great Western Trail Connection

The Glen Ellyn Park District completed an ADA-accessible trail connection from the Great Western Trail to Ackerman Park. The connection was made possible with financial assistance thanks to an Openlands - ComEd Green Region Program Grant awarded to the Park District for \$10,000. The trail will provide residents with an alternative access to Ackerman Park from the north side, as well as to the County's bike trail system.

Safety Village

Renovations to Safety Village at the Spring Avenue Recreation Center were completed in September, 2015. The improvements were made possible thanks to grant funds in the amount of \$40,000 from the Illinois Department of Commerce and Economic Opportunity. The grant provided 100% of funds needed to repair and improve the existing outdoor Safety Village area with a renovated surface and other new amenities enhancing children's first-time learning experience regarding bicycling along with other safety situations.

Ackerman Park: Master Plan

In 2015, the two most northern softball fields were converted to open space allowing for more soccer fields and flexibility to move and rest fields.



Energy-Efficient Regenerative Filters Installed at Sunset Pool

New filters were installed at Sunset Pool in order to reduce water and energy consumption.

Outdoor Basketball Court at Main Street Recreation Center Renovated

Renovations to the outdoor basketball court at the Main Street Recreation Center were completed in July. The Glen Ellyn Park District was able to refurbish this recreational area thanks to a collaborative effort with the Glen Ellyn Titans Youth Basketball organization who with assistance from the community, contributed \$30,000 towards the improvement project. Additional in-kind contributions were made by Pope Lawn and Landscaping, a long time family owned Glen Ellyn business. Improvements included court resurfacing, basketball poles, glass backboards, park benches, expansion of a fence and landscape elements.

Ackerman SFC Facility Enhancements

The Ackerman SFC Fitness Center was enhanced with new equipment in June 2015. Equipment included: 7 Life Fitness Treadmills, 3 PRECOR Adaptive Motion Trainers, 3 PRECOR EFX Ellipticals with Cross Ramp, 2 NuStep Recumbent Steppers and 2 StairMasters.

In addition, facility enhancements took place in the gymnasium to maintain the integrity of the floor surface. The gymnasium floor was partially screened (lightly sanded), cleaned and a fresh coat of oil-based finish was applied. Two pickleball courts were permanently painted on court two during the enhancement which increased our pickleball courts from two to four.

LAKE ELLYN BOATHOUSE

After several years of discussion, public meetings and refinement, significant improvements to Lake Ellyn Park began at the end of September 2015. The \$2.9 million capital improvement project concentrates on restoration of the Lake Ellyn Boathouse to its historic beauty, including replacement of the roof and the addition of a flood protection wall. The project also includes landscape enhancements and a stand-alone restroom near the playground. Construction is scheduled to be completed in late June, 2016.

The master plan is an exciting vision that reflects the consensus to retain and enhance what makes it a great community park - to "polish the gem." It provides for a historically authentic restoration of the Boathouse, with an eye towards listing the building on the National Register of Historic Places as well as achieving LEED certification Gold Level. Construction management and oversight will be conducted by Wight Construction with Conservation Design Forum and Farr and Associates serving as the design team.

Upgrading Lake Ellyn Park and the Boathouse was identified as a top priority for the Park District in the 2012 Community and Attitude Interest Survey and prioritized by the Park Board of Commissioners. After a collaborative and inclusive process involving residents, neighbors, stakeholders and community organizations in order to establish priorities and direction for the Lake Ellyn Park improvements, the Park District has identified funding and pursued implementing the restoration of the Boathouse and its surrounding elements.

The Park District will minimize disruption to the park and apologizes for any inconvenience while the improvements are taking place. Additional information regarding the project are displayed on the District website, www.gepark.org.

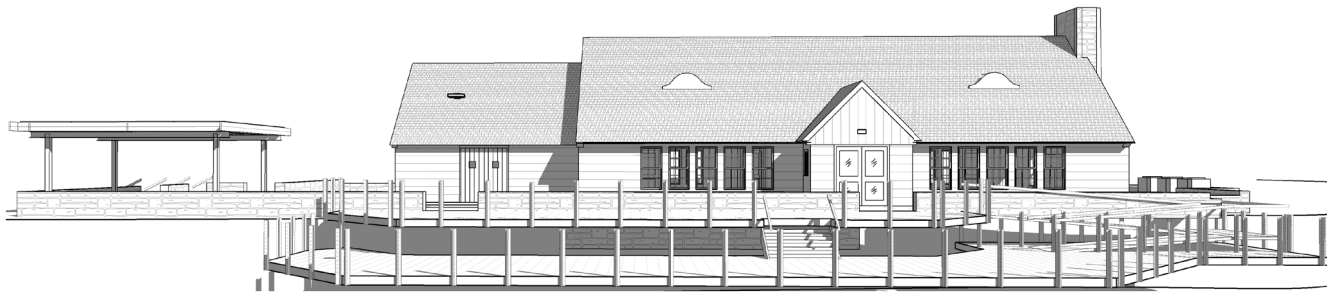
Boathouse Restoration: Interior/Exterior

- **Architectural Plans**
- **LEED Certification "Gold Level"**
- **Historic Landmark**
- **Flood Control Wall**
- **Lighting**
- **Patio/Deck**
- **Landscape Around/Near Boathouse Perimeter**
- **Secondary Restroom**

Front Entrance



Lake Side



South Patio



Athletics



The Glen Ellyn Park District is committed to offering diverse athletics opportunities for the community, including instructional classes, leagues and camps. We strive to provide quality experiences and facilities focused on developing skills, building confidence, and learning the values of teamwork and good sportsmanship. In 2015, there were:

- **Approximately 9,000 registrations for athletic programs, camps and leagues**
- **Over 2,800 registered participants in Glenbard West, Glenbard South and Glen Crest Summer Camps**
- **Over 3,500 baseball, football, soccer, field hockey, lacrosse, softball, and basketball games scheduled and played**

» Tournaments & Special Events

The District also hosted twelve (12) tournaments and special events which showcased our many parks and facilities to players, teams and spectators from around the country including:

- **Glen Ellyn Phillies Invitational and All-Star Early Summer Girls Fastpitch Softball Tournament**
- **DeMarini Invitational Softball Showcase**
- **Jim Didi Memorial Girls Softball Tournament**
- **Glen Ellyn Classic Baseball Tournament**
- **Glen Ellyn Youth Baseball All-Star Movie Night**
- **GameDay USA Majestic Prospect Games Baseball Tournament**
- **GameDay USA National Championships Baseball Tournament**
- **GameDay USA All-Star Baseball Weekend**
- **West Suburban Youth Baseball League Championship**

- **Glen Ellyn Golden Eagles Football Jamboree**
- **Glen Ellyn Golden Eagles Cheer Showcase**
- **Glen Ellyn Lakers Fall Classic Soccer Tournament**

» Giving Back

In addition to Park District Staff, hundreds of volunteers assist with the administration of the athletics programs. Many of these individuals serve on Executive Committees representing their various organizations in order to provide direction and to assist with the various tasks, activities and events needed throughout the year.

Through their hard work and dedication, over \$50,000 in athletic program sponsorships including cash, supplies and services was received, including a USA Football Equipment Grant from Riddell and a US Lacrosse First Stick Equipment Grant. These results have helped supplement existing District efforts to fund program and facility improvements including:

- **Installation of scoreboard on Village Green Field #4**
- **Complete infield renovation of Village Green Field #1**
- **Complete infield renovation of Village Green Field #2 in cooperation with Glenbard West High School**
- **Reconfiguration of dugouts on Village Green Fields #1 & #3 for installation of dugout covers**
- **Irrigation/drainage improvements at lower Newton**
- **Upper Newton converted from grass to synthetic turf**
- **Creation of additional green space for soccer fields at Ackerman Park**

Other initiatives in 2015 included implementation of Positive Coaching Alliance (PCA) Training for all youth sports coaches and having Certified Athletic Trainers on-site for all home football games throughout the season.



LOOKING FORWARD INTO 2016...

- » Completion of Lake Ellyn Park & Boathouse: Restoration and Improvements
- » Lake Ellyn Park Playground Replacement
- » Newton Park Tennis Court Resurfacing
- » Ackerman Parking Lot Improvements
- » Athletic Lighting Improvements at Ackerman Park
- » District-Wide Customer Service Program
- » Implementation of Positive Coaching Alliance Training for All Youth Sports Coaches
- » Environmental Advisory Committee
- » New Recreation Programs and Special Events
- » Improved Park District Website
- » Additional Shelter at Maryknoll Park
- » Additional Natural Area at Maryknoll Park

Value of the Glen Ellyn Park District

While some aspects of quality of life cannot be measured, the Glen Ellyn Park District provides many quantifiable benefits to its residents. Here is an overview of some of the outstanding parks and facilities that our residents can enjoy:

29
PARKS

21
PLAYGROUNDS

18
**ATHLETIC
FIELDS**

14
**TENNIS
COURTS**

7.5
**BASKETBALL
COURTS**

4
**OUTDOOR
ICE RINKS**

10
**PICNIC
SHELTERS**

4
**MILES OF
TRAILS**

**PLATFORM TENNIS FACILITY • SKATEBOARDING FACILITY • SPLASH PARK
MINIATURE GOLF COURSE • SWIMMING FACILITY • SPORTS & FITNESS COMPLEX
DOG PARK • SAND VOLLEYBALL COURTS • BASEBALL/SOFTBALL FIELDS
SLED HILL • INDOOR MULTI-USE TURF • FREE, ANNUAL EVENTS**

ACCORDING TO A SURVEY BY THE ILLINOIS ASSOCIATION OF PARK DISTRICTS, 9 OUT OF 10 ILLINOISANS AGREE THAT PARK DISTRICTS AND OPEN SPACES IMPROVE LOCAL PROPERTY VALUES IN THEIR COMMUNITIES.

Reference Documents

The following documents are available online at the links listed below.

- **Lake Ellyn Park Master Plan** - http://gepark.org/assets/PDFs/Lake%20Ellyn%20Park/2013-01-14_Lake%20Ellyn%20Master%20Plan%20Final.pdf
- **Ackerman Park Master Plan** - <http://gepark.org/assets/PDFs/Park%20Plans/2014-Ackerman-Park-Masterplan.pdf>
- **Park Board Meeting Information, Agendas, Minutes, and Recordings** - http://gepark.org/boa_meetings.htm
- **Park Board of Commissioners Information** - http://gepark.org/boa_board.htm
- **2015 Park District Budget** - <http://gepark.org/assets/PDFs/Budget-Ordinance/2015-Budget.pdf>
- **2014 Park District Audit** - <http://gepark.org/assets/PDFs/Financial%20Audits/CAFR-2014.pdf>

Leadership Team

Executive Director

Dave Harris
dharris@gepark.org

Superintendent of Finance & Personnel

Nick Cinquegrani
ncinquegrani@gepark.org

Superintendent of Recreation

Kathleen Esposito
kesposito@gepark.org

Superintendent of Parks & Planning

Dan Hopkins
dhopkins@gepark.org



Glen Ellyn Park District
185 Spring Avenue
Glen Ellyn, IL 60137
(630) 858-2462
www.gepark.org

Glen Ellyn Park District Board Meetings are open to the public and are held at the Spring Avenue Recreation Center. The regular board meetings begin at 7pm on the third Tuesday of each month. Workshop meetings are at 7pm the first Tuesday of each month.