

SPRING 2025

playbook

Spring registration
begins Saturday,
February 1 *at 8 am*

IN THIS ISSUE:

Community Events *08*

Sunset Pool
Season Passes *18*

Travel Soccer
Tryouts *76*

Swim Lessons *20*

what's inside



glenellynparks



subscribe!



ADULT INTEREST
42



EVENTS
08



DANCE
61

Active Older Adults..... 45
Bingo, clubs, and more

Adult Interest 42

Aquatics 18
Sunset Pool passes, swim lessons, and Gators Swim Team

Dance 61

Day Trips 48

Directory..... 03

Early Childhood Interest..... 26

Events 08

Fitness..... 88
Ackerman SFC, group fitness classes, personal training, sports training

Frequently Asked Questions..... 06

Gymnastics 56

Holes & Knolls Mini Golf..... 16

Maryknoll Splash Park..... 17

Nature..... 50

Park Information 99

Parks Foundation..... 98

Policies..... 101

Preschool 22

Racquet Sports..... 82
Platform tennis, tennis, and pickleball

Registration..... 04

Rentals 96

Scholarship Program..... 93

Sports..... 64
Early childhood, youth/teen, and adult classes and leagues

Spring Avenue Dog Park..... 60

Youth & Teen Interest..... 31

WDSRA..... 94

new for spring

- All About Eggs Hunt
- Bikes, Bands and Burn
- Birding Beyond
- Candyland Trail Game
- Morning at the Museum
- Nature Photography
- Rhythm Workshop
- Sensory-Friendly Egg Hunt
- And More!



our mission

To foster diverse, community-based leisure opportunities, through a harmonious blend of quality recreation programs, facilities and open space which will enhance the quality of life into the future.



we're here to help!

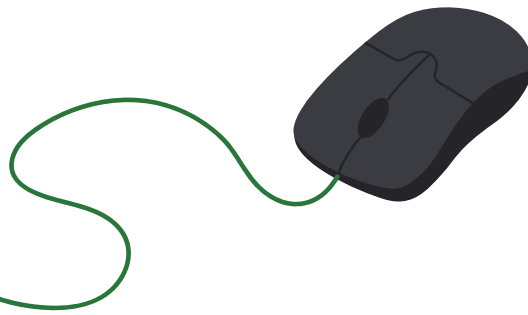
Staff initials follow the activity description for which they are responsible.

Website gepark.org

Closure/Cancellation Hotline gepark.org/hotline

Executive Director's Office			
Executive Director	Dave Thommes	dthommes@gepark.org	-
Board Secretary & Directors' Assistant	Kimberly Dikker	kdikker@gepark.org	(kd)
Finance & Personnel Department			
Deputy Executive Director	Nick Cinquegrani	ncinquegrani@gepark.org	(nc)
Human Resources & Risk Manager	Lynn Wiltfong	lwiltfong@gepark.org	(lw)
Accounting Manager	Cathy Yocum	cyocum@gepark.org	(cy)
Recreation Department			
Director of Recreation & Facilities	Stacey Lim	slim@gepark.org	(sl)
Superintendent of Athletics	Clint Babicz	cbabicz@gepark.org	(cb)
Superintendent of Recreation Services	David MacDonald	dmacdonald@gepark.org	(dm)
Manager of Athletics	Dan Tripp	dtripp@gepark.org	(dt)
Manager of Cultural Arts, Camps & Seniors	Anastasia Aubie	aaubie@gepark.org	(aa)
Manager of Soccer Operations	Darshan Addanki	daddanki@gepark.org	(da)
Manager of Early Childhood Services	Katy Speck	kspeck@gepark.org	(ks)
Special Facilities Manager	Lisa Semetko	lsemetko@gepark.org	(ls)
Manager of Racquet Sports	Mark Cunnington	mcunnington@gepark.org	(mc)
Facility Manager of Ackerman SFC	Brad Thomas	bthomas@gepark.org	(bt)
Asst. Facility Manager of Ackerman SFC	Rebecca Brush	rbrush@gepark.org	(rb)
Asst. Facility Manager of Ackerman SFC	Jay Diener	jdiener@gepark.org	(jd)
Asst. Facility Manager of Ackerman SFC	Sean Gallagher	sgallagher@gepark.org	(sg)
Registration & Guest Services Manager	Koshie Mills	kmills@gepark.org	(km)
Parks & Planning Department			
Director of Planning and Natural Resources	Nathan Troia	ntroia@gepark.org	-
Superintendent of Parks & Facilities Operations	Scott Norman	snorman@gepark.org	(sn)
Downtown Park Events & Sponsorship Manager	Susan Smentek	ssmentek@gepark.org	(ss)
Facility Maintenance Specialist	Paul Pitts	ppitts@gepark.org	(pp)
Manager of Natural Areas and Outdoor Education	Chris Gutmann	cgutmann@gepark.org	(cg)
Environmental Outreach Specialist	Laurie Bellmar	lbellmar@gepark.org	(lb)
Marketing Department			
Superintendent of Marketing & Communications	Courtney OKray	cokray@gepark.org	(co)

how to register



the fastest way to register is online.

For registration assistance, call our registration offices at (630) 942-7280 or email registration@gepark.org.

first time registering?

You can create an account online at gepark.org/register or visit Spring Avenue Recreation Center, Main Street Recreation Center, or Ackerman Sports and Fitness Center during registration office hours and Park District staff will assist you. You may be asked to provide proof of residency for all household members being added to the account.

already have an account?

Visit anc.apm.activecommunities.com/gepark/home to access the online registration portal directly, or go to gepark.org and click on the register button. Log in. Once logged in, you can go to My Account by clicking your name. Here, you can update your household information, check your purchase history, print your childcare tax receipt and other reports, or change your login information. Note: You cannot withdraw from or transfer an activity, update a family member's birth date, or change your home address.

locked out of your account?

Account lockouts happen when you incorrectly enter your password too many times or if you have past due fees. To unlock your account, please call (630) 942-7280 or email registration@gepark.org during registration office hours.

activity codes

The series of numbers beneath each activity description corresponds to that activity session. Please use this code when registering.

minimums and maximums

Each activity and activity session has a set minimum and maximum number of participants based on providing quality instruction, space availability, supplies, number of instructors, and other factors. For some activities, we may be able to accommodate the wait list or add an extra session, while we may not be able to do so for others. Activities may reach the maximum prior to the registration deadline, if indicated. Activities not meeting the minimum registration may be canceled, and patrons will be notified.

fee assistance/scholarship program

Financial assistance is available to all Glen Ellyn Park District residents that qualify. Funds can be used toward the fees of activities, events, and memberships. For more details, visit gepark.org/financial-aid.

spring registration start dates and times

residents (in district):

Saturday, February 1, 2025 at 8am

nonresidents (out of district):

Saturday, February 8, 2025 at 8am

three easy ways to register

Registration is first-come, first-served. Here are the ways you can register:



Online or Through This Playbook

Click the activity code in the digital Playbook. Or, you can visit gepark.org/register to browse and register for activities.



In Person or Drop-Off Form

Register in-person or drop-off your form at Spring Avenue Recreation Center, Main Street Recreation Center, and Ackerman Sports and Fitness Center during registration office hours.

Visit gepark.org to check for any special hours.

	Spring Avenue Recreation Center 185 Spring Ave.	Main Street Recreation Center 501 Hill Ave.	Ackerman Sports & Fitness Center 800 St. Charles Rd.
Monday	8:30am-5pm	8:30am-8pm	8:30am-9pm
Tuesday	8:30am-5pm	8:30am-8pm	8:30am-9pm
Wednesday	8:30am-7pm	8:30am-8pm	8:30am-9pm
Thursday	8:30am-7pm	8:30am-8pm	8:30am-9pm
Friday	8:30am-5pm	8:30am-5pm	8:30am-9pm
Saturday	9am-12pm	9am-12pm	7am-7pm
Sunday	Closed	Closed	7am-7pm

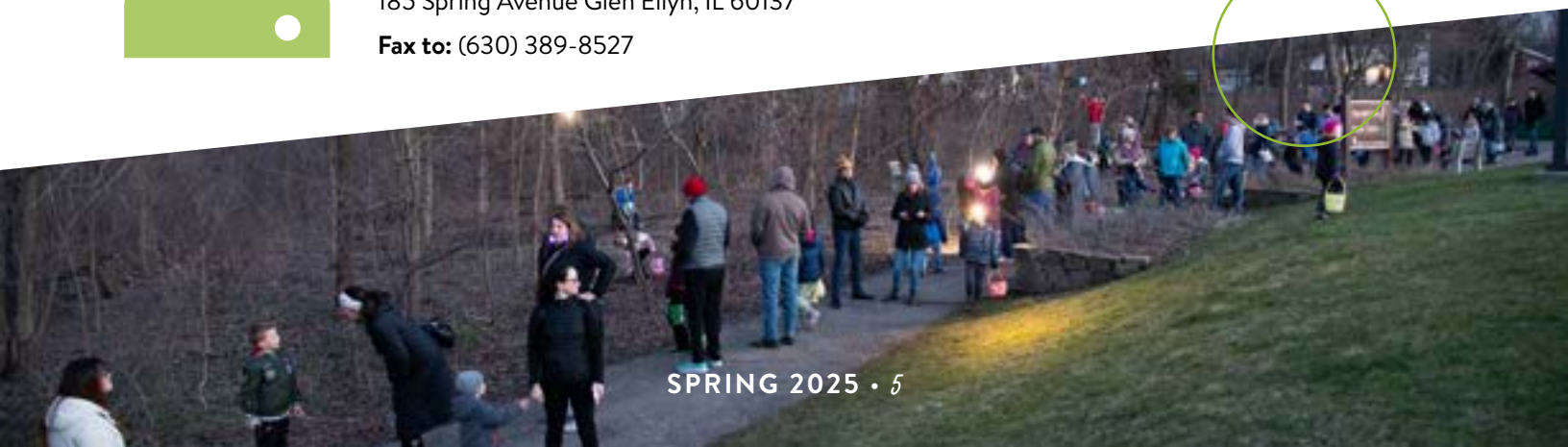


Mail/Fax

Mail your form to:

Glen Ellyn Park District, Registration
185 Spring Avenue Glen Ellyn, IL 60137

Fax to: (630) 389-8527





frequently asked questions

am I considered a resident (in district) or a nonresident (out of district)?

To determine the Park District in which you reside, please consult your tax bills, or call or email our Registration Office. Please note that Glen Ellyn Park District boundaries do not align with Village of Glen Ellyn boundaries.

which payment methods are accepted?

We accept Visa, MasterCard, Discover and American Express for online, in-person, mail, and fax registrations. For in-person registrations, we also accept checks made payable to the Glen Ellyn Park District as well as cash.

do you make age exceptions for events and programs?

If you would like to request an age exception for your child, please call (630) 942-7280 or email registration@gepark.org during regular registration office hours. If approved by the supervisor, you must register for the class in person at the Spring Avenue or Main Street Recreation Centers. Online registration with an age exception is not available.

how do I withdraw from an activity or get a refund?

Refund requests must be submitted by calling (630) 942-7280, emailing registration@gepark.org, or completing our Refund Request Form at gepark.org/refund. Cancellations and withdrawals cannot be completed through the online registration portal. Please note that a service charge of \$5 or more will apply to all cancellations, withdrawals, or refunds, and that some activities, events, and services are non-refundable.

how do I get on the waitlist for a class?

On the activity's online registration page, click on '+ Waiting List' and follow the on-screen instructions. There is no fee to join the waitlist. If a spot becomes available, we will contact you for payment. If we are unable to reach you within 24 hours, we will move on to the next person on the list. Placing your name on the waiting list is recommended, but it does not guarantee admission into the activity.



stay informed

park district hotline

Stay informed about activity/event cancellations or facility closures due to adverse weather or other factors by utilizing the Glen Ellyn Park District's hotline, powered by Rainout Line, at gepark.org/hotline.

subscribe to our e-newsletter

Receive the most up-to-date info on activities, events, and more. Sign up at gepark.org/enews.

follow us on social media

@glenellynparks on Facebook, Instagram, and X (formerly Twitter).

Mark your calendar with Playbook release dates

Look for upcoming editions of our Playbook at gepark.org/playbook.

SUMMER PLAYBOOK 2025: April 23, 2025

AUTUMN PLAYBOOK 2025: July 16, 2025

The District reserves the right to change the release dates above.

looking for even more fun?

Activities are added throughout the year and may not be featured at the time of publication. Visit gepark.org/register to explore additional offerings.

abbreviation key

R: Resident
NR: Nonresident
M: Member
NM: Non-member

board of commissioners

For the Board meeting schedule, visit gepark.org/board-meetings.

Ben Stortz	President
Julia Nephew	Vice President
Kathy Cornell	Treasurer
Mary Crickmore	Commissioner
Alex Durham	Commissioner
Michael Ward	Commissioner
Rob Weber	Commissioner

spring calendar

FEBRUARY

- Hunt for the Hearts** 
February 8
1pm-3pm
Maryknoll Clubhouse
- Blood Drive**
February 18
9am-1pm
Ackerman SFC
- Winter Family Fun in the Neighborhood**
February 25
4pm-6pm
Spring Avenue Recreation
- Summer Job Fair**
February 28
2pm-6pm
Main Street Recreation Center

MARCH

- Sportswap**
March 9
1pm-2:30pm
Ackerman SFC
- Food Drive: National Nutrition Month**
March 13-20
Regular business hours
Ackerman SFC
- Blood Drive**
March 18
9am-1pm
Ackerman SFC
- Trivia Night** 
March 21
6pm-8pm
Ackerman SFC

APRIL

- 2k Glow Run/Walk** 
April 5
7pm-9pm
Ackerman Park
- Aquatics Summer Job Fair**
April 8
2:30pm-6:30pm
Lake Ellyn Boathouse
- Bubbly Bunny Egg Hunt** 
April 10
7:30pm-9pm
Lake Ellyn Boathouse
- Hopper Cottontail & Friends Hoppy Party** 
April 12
11am-1pm
Ackerman SFC
- Blood Drive**
April 15
9am-1pm
Ackerman SFC
- Grandparents and Me Day of Bingo** 
April 15
1pm-2:30pm
Lake Ellyn Boathouse
- Flashlight Egg Hunt** 
April 17
Multiple times
Churchill Park
- Sensory Friendly Egg Hunt** 
April 18
8:30am-9am
Maryknoll Park

Eggs-traordinary Egg Hunt

April 18
Multiple times
Maryknoll Park

EARTH WEEK

Wildflower Watercolor

April 21
1pm-3pm
Lake Ellyn Park

Library Storytime

April 22
10:30am-11am
Maryknoll Park

Candyland Trail Game

April 23
3:45pm-5pm
Churchill Park

Migration Morning Bird Walk

April 24
8:30am-10am
Manor Park

Arbor Day Preschool Nature Outing

April 25
10am-11am
Ackerman Woods




Breakfast with the Birds

April 26
9am-10:30am
Churchill Park


Forest Bathing Wellness Walk

April 27
1pm-3pm
Churchill Park

MAY

- Touch-A-Truck**
May 3
10am-12pm
Maryknoll Park
- Disc Golf Ace Race** 
May 10
9am-11am
Maryknoll Park
- Free Week at Ackerman SFC**
May 12-18
Ackerman SFC
- Blood Drive**
May 13
9am-1pm
Ackerman SFC
- Under the Sea Tea** 
May 16
Multiple times
Lake Ellyn Boathouse
- Spring Clean Flea Market** 
May 17
11am-4pm
Maryknoll Park
- Family Bingo Night**
May 30
5pm-7pm
Ackerman SFC

JULY

- Freedom Four 4-Mile Run/Walk** 
July 4
Starts 7:30 am
Lake Ellyn Park

 Registration required



community events

Blood and Food Collection Drives

Give the gift of life or fill empty plates! Ackerman SFC needs you at its blood drives and food drives. Donate blood (appointments recommended) or drop off non-perishables and toiletries for the Glen House Food Pantry. For additional details, please visit gepark.org/drives. (bt)

February Blood Drive

Date: Tuesday, Feb. 18
Time: 9am-1pm

April Blood Drive

Date: Tuesday, April 15
Time: 9am-1pm

March Food Drive

Date: March 13-20
Time: Regular business hours

May Blood Drive

Date: Tuesday, May 13
Time: 9am-1pm

March Blood Drive

Date: Tuesday, March 18
Time: 9am-1pm

Winter Family Fun in the Neighborhood *Free!*

Tuesday, February 25 • 4pm-6pm

All ages

It's a fun-filled, family-friendly, free evening of activities and entertainment, close to your backyard. Join us in your neighborhood rec center for entertainment, interactive games and activities, face painting, arts, crafts, and more. Location: Spring Avenue Recreation Center. (aa)

Summer Job Fairs *Free!*

Looking for a summer job with the Glen Ellyn Park District? Teens (ages 15 and up) and others can gain valuable experience, build skills, and make new friends while enjoying flexible schedules, training, outdoor work, a free fitness membership, and guest passes. Attend one of our job fairs to explore available roles and participate in on-site interviews! Positions include camp counselor, lifeguard, athletic field maintenance, and more. Visit gepark.org/jobs for detailed job descriptions and requirements. (lw)

Summer Job Fair (All Positions)

Main Street Recreation Center
Date: Friday, February 28
Time: 2pm-6pm

Aquatics Job Fair (Pool Positions)

Lake Ellyn Boathouse
Date: Tuesday, April 8
Time: 2:30pm-6:30pm

Sportswap

Sunday, March 9 • 1pm-2:30pm

All ages

Give and get gently used sports equipment at our Sportswap event with Go Green Glen Ellyn. Gear up for spring sports and activities at this community exchange and sale. Equipment will be collected Monday, March 3 through Saturday, March 8. Watch for more details to be posted at gepark.org. Location: Ackerman SFC. (lb)

Touch-A-Truck *Free!*

Saturday, May 3 • 10am-12pm

All ages

Touch-A-Truck is your child's chance to see their favorite big trucks and things on wheels, interact with the drivers, and take pictures. There will also be a raffle and themed giveaways while supplies last. This free event is open to the public and all ages. Limited parking is available at Maryknoll Park. Overflow parking will be available at Roosevelt Glen Corporate Center. Location: Maryknoll Park. (ls)

Free Week at Ackerman SFC

Monday, May 12-Sunday, May 18

We're waiving the drop-in fee for the fitness center and group fitness classes at Ackerman SFC during our Free Week, which runs May 12-18, 2025. This is your chance to experience the many benefits of a great workout at Ackerman and achieve your fitness goals. To take advantage of this special opportunity, just stop by the Ackerman SFC front desk during Free Week.

Must be 18 years of age or older with a valid ID or must be accompanied by an adult if under 18. (sg)

Family Bingo Night

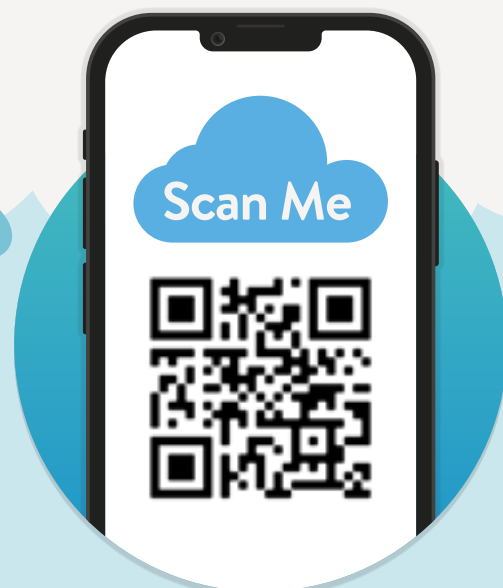
Friday, May 30 • 5pm-7pm

All ages

Spend an evening at Ackerman SFC packed with bingo, pizza, and prizes. We'll play several rounds starting at 5pm. Prizes like gift cards and candy will be awarded at the end of each round. Pre-registration is not required. Kids ages 15 and under must be accompanied by an adult. Drop in anytime with the whole family and have some fun. Bingo cards and pizza are just \$1 each. Location: Ackerman SFC. (rb)

GLEN ELLYN PARK DISTRICT Hotline (Rainout Line)

Stay informed about program/event cancellations or facility closures due to adverse weather or other factors by utilizing the Glen Ellyn Park District's hotline, powered by Rainout Line.



registered events

Each event and event session has a set minimum and maximum number of participants based on providing a quality experience, space availability, supplies, number of instructors/staff/volunteers, and other factors. For some events, we may be able to accommodate the wait list or add an extra session, while we may not be able to do so for others. Events may reach the maximum prior to the registration deadline, if indicated. Events not meeting the minimum registration may be canceled, and patrons will be notified.

Hunt for the Hearts

All ages

Are you on a hunt for love? Join us in an adventurous hunt across the Park District as you solve clues and beat challenges to find hearts we've hidden throughout our parks. Prizes will be awarded to the first and second groups to finish the course. Please dress for the weather. Location: Maryknoll Clubhouse. (ls)

#/Link	Day	Date	Time	R/NR
133908	Sa	2/8	1pm-3pm	\$10/\$15

Trivia Night

All ages

Grab your best guessers and join us for Trivia Night. Topics will range from sports, to cinema, to songs, and everything in-between. This unique trivia experience uses picture clues, song snippets, and other media to help participants come up with the right answer. Trivia will run for 6 rounds and winners will receive prizes. Registration is on a team basis, with 6 people maximum per team. Team rosters will be sent to participants prior to the event. Location: Ackerman SFC. (rb)

#/Link	Day	Date	Time	R/NR
133679	F	3/21	6pm-8pm	\$30/\$40

2k Glow Run/Walk

Ages 4 and up

On your mark, get set, glow! This 1.25-mile nighttime fun run featuring light-up color stations are not to be missed. Before and after the race, enjoy a rockin' glow party with a DJ. Pre-race activities start at 7pm and the first wave of runners will take off at 7:45pm. Maximize your glow by wearing as much white or neon as possible. Fee includes t-shirt, glow sticks, and access to pre- and post-race event activities. More information will be emailed to registered participants ahead of race day. Location: Ackerman Park. (rb)

#/Link	Day	Date	Time	R/NR
134294	Sa	4/5	7pm-9pm	\$30/\$42

Bubby Bunny Egg Hunt

Ages 21 and up

Egg hunts aren't just for the kids anymore. Break out your baskets and flashlights and head out for our adults-only egg hunt. There will be hundreds of eggs hidden throughout the park and they won't all be easy to spot. Inside the eggs, you'll find coupons, gift cards, candy, and other special treats. Light snacks and beverages will be provided before the hunt begins. Be sure to dress for the weather, this event will be held outdoors rain or snow. Location: Lake Ellyn Boathouse. (aa)

#/Link	Day	Date	Time	R/NR
134652	Th	4/10	7:30pm-9pm	\$20/\$35



SPRING 2025 • 11

Registration for orange code numbers is open now | Registration for blue code numbers begins at 8am on February 1



Hopper Cottontail & Friends Hoppy Party

Ages 2-8

Hopper Cottontail (Glen Ellyn's own Easter bunny) and some of your favorite character friends are coming to Ackerman SFC for two hours of egg-citing activities and games including egg-shaped cookie decorating, egg toss contest, and crafts. There will also be a bounce house, an opportunity to take photos, and a pizza lunch. Only children must register but must be accompanied by an adult.

Location: Ackerman SFC. (rb)

#/Link	Day	Date	Time	R/NR
134296	Sa	4/12	11am-1pm	\$25/\$40

Grandparents and Me Day of Bingo

Ages 3-12

Grab your grandparents and head on over to Lake Ellyn Boathouse for a chance to win prizes playing your favorite game of bingo. Prizes will be awarded for each round of bingo with one lucky winner taking home a grand prize. Only children need to register but must be accompanied by an grandparent or guardian. Snacks and refreshments available.

Location: Lake Ellyn Boathouse. (aa)

#/Link	Day	Date	Time	R/NR
134429	Tu	4/15	1pm-2:30pm	\$10/\$15

Flashlight Egg Hunt

Ages 6-11

The Bunny has scattered some special treats around the park and it's your job to find them. Grab your flashlight and basket and head out to look for eggs, candy, toys, and prizes. Find one of the special eggs and redeem it for one of the grand prize baskets. Please be sure to bring a basket and your own flashlight to make egg hunting easier. Check-in starts at 7:45pm and 8:45pm. Flashlight Egg Hunts will take place following a short hike through the Churchill Woods at approximately 8pm and 9pm. Dress for the weather. Children must be accompanied by an adult. Location: Churchill Park. (ks)

Ages 6-8

#/Link	Day	Date	Time	R/NR
134449	Th	4/17	7:45pm-8:30pm	\$12/\$24

Ages 9-11

#/Link	Day	Date	Time	R/NR
134450	Th	4/17	8:45pm-9:30pm	\$12/\$24

Sensory-Friendly Egg Hunt

All ages

Hop on over to Maryknoll Park for a welcoming and fun-filled structured egg hunt. Participants will follow an accessible trail in search of colored eggs, non-food goodies, plus other allergen free prizes. The hunt will feature smaller crowds, low noise volumes, and a quiet zone. Registration is open to individuals with special needs. Location: Maryknoll Park. (dm)

#/Link	Day	Date	Time	R/NR
134383	F	4/18	8:30am-9am	\$10/\$15

Eggs-traordinary Egg Hunt

Ages 5 and under

Have an egg-cellent egg hunting time this spring at Maryknoll Park! Children up to the age of 6 are invited to join us for a springtime egg hunt with a chance to meet (and take a picture with) Hopper Cottontail – the Glen Ellyn Park District Bunny. Adults must accompany children; only children need to register. Prior to the egg hunt, the Bunny will be available for photos and we'll have activities to keep the little ones entertained until "go time." Don't forget to bring your basket and dress for the weather – this event will be held rain, snow, or shine. Please check-in with the egg hunt staff when you arrive. Egg hunt begins at 10am and 11:30am exactly, so please plan to come early. Location: Maryknoll Park. (1s)

#/Link	Day	Date	Time	R/NR
134653	F	4/18	10am-10:30am	\$10/\$14
134654	F	4/18	11:30am-12pm	\$10/\$14



Earth Week

All ages

Celebrate Earth Week and Arbor Day in Glen Ellyn Park District natural areas. Starting on April 21, we'll offer seven days of environmental experiences to get spring started. For more information, please click on the code number, check the Nature section, or contact lbellmar@gepark.org. (1b)

Wildflower Watercolor at Lake Ellyn

#/Link	Day	Date	Time	R/NR
134281	M	4/21	1pm-3pm	\$24/\$30

Library Storytime at Maryknoll Park

#/Link	Day	Date	Time	R/NR
134282	Tu	4/22	10:30am-11am	Free w/registration

Candyland Trail Game at Churchill Park

#/Link	Day	Date	Time	R/NR
134283	W	4/23	3:45pm-5pm	\$15/\$18

Migration Morning Bird Walk at Manor Park

#/Link	Day	Date	Time	R/NR
134271	Th	4/24	8:30am-10am	Free w/registration

Arbor Day Preschool Nature Outing at Ackerman Woods

#/Link	Day	Date	Time	R/NR
134261	F	4/25	10am-11am	\$10/\$12

Breakfast with the Birds at Churchill Park

#/Link	Day	Date	Time	R/NR
134284	Sa	4/26	9am-10:30am	\$5/\$7

Forest Bathing Wellness Walk at Churchill Park

#/Link	Day	Date	Time	R/NR
134285	Su	4/27	1pm-3pm	\$20/\$24



Disc Golf Ace Race

Ages 3 and up

Play two rounds of disc golf on our 9-hole course, but instead of keeping score, the only object is to throw aces (also known as a hole-in-one). Holes are shortened to have both adult and youth tees. Participants will play in the group with which they come; single players will be grouped with other players. Players that score an ace will receive a \$25 Dick's Sporting Goods gift card, which will be mailed to their home, and will be entered to win the \$100 Visa gift card grand prize. The more aces you score, the more chances you have of winning. There will be one winner selected for the grand prize. Bring your own disc to throw, or spares will be available to use. Each participant will receive a swag bag of disc golf items. Location: Maryknoll Park. (Is)

#/Link	Day	Date	Time	R/NR
134845	Sa	5/10	9am-11am	\$15/\$25

Under the Sea Tea

Ages 2 and up

Join us for an enchanting "Under the Sea" Tea Party as the sun sets over the water. Enjoy delightful refreshments and themed treats in an ocean-inspired setting, perfect for a magical evening. Special guest Ariel will be available for a memorable photo op with guests. This unique, family-friendly event is sure to create waves of wonder for all who attend! Register each guest attending. Location: Lake Ellyn Boathouse. (aa)

#/Link	Day	Date	Time	R/NR
134405	F	5/16	5pm-6pm	\$25/\$40
134406	F	5/16	6:30pm-7:30pm	\$25/\$40

Spring Clean Flea Market

Ages 18 and up

Spring is here and it's time to clean out your closets. Do you have some used items that you no longer need, but still have some life in them? Sell them at our Spring Clean Flea Market. At this market, you'll be able to sell, barter, or trade your gently used items with other members of the community. Vendors will receive one 10x10 area to set up their own table, booth, or stand from which to sell their wares. Event is free for shoppers. Registration fee is for vendors only, vendors keep all profits. Vendor set-up begins at 10am. Tables and chairs not provided. Location: Maryknoll Park. (Is)

#/Link	Day	Date	Time	R/NR
134656	Sa	5/17	11am-4pm	\$15/\$25





Freedom Four 4-Mile Run/Walk

Ages 5 and up

Kick off your 4th of July with this fun, family-friendly event! Run or walk a scenic 4-mile course starting and ending at Lake Ellyn Park. Explore nearby streets and enjoy the festive atmosphere while supporting a great cause. A portion of proceeds benefits the Friends of Glen Ellyn Parks' Scholarship Fund, providing access to recreation and athletic programs for families in need. Freedom Four t-shirts are guaranteed for early bird registrants (now-June 24), and available while supplies last for others. (bt)

Date: Friday, July 4

Time: 7:30am start

Start & Finish: Lake Ellyn Park

Awards: Top two male and female in each age division (presented around 8:30am)



Registration (R/NR)

Early Bird: \$28/person (now-6/23)

Regular: \$34/person (6/24-7/3)

Day of Race: \$40/person

Registration Link:

<https://raceroster.com/events/2025/97316/freedom-four>

Registration is taken online only. Online registration is available until the start of the race.

Packet Pick-Up

Registered by July 2:

Ackerman SFC on June 30-July 2.

After July 2: 6:30am-7:30am on July 4 at Lake Ellyn Park.

SPRING 2025 • 15

Registration for orange code numbers is open now | Registration for blue code numbers begins at 8am on February 1



holes & knolls mini golf

845 Pershing Avenue, Glen Ellyn

Holes & Knolls features two 18-hole mini golf courses that provide fun for the whole family, with one course fully wheelchair accessible. Visitors can pick up clubs and pay the daily admission fee inside the Maryknoll Clubhouse, which also includes a concession stand.

Mini Golf Fees

- Child admission (ages 3-13)..... \$7
- Regular admission (ages 14 and up) \$8
- Seniors (ages 60 and up) and military \$7

Mini Golf Hours

Play a round from April 25 to October 30, 2025. It must be a minimum of 50 degrees to open the courses.

Check gepark.org/hotline for up-to-date information including weather-related closings.

April 25 to May 25

- Monday-Thursday Closed
- Friday..... 4pm-9pm
- Saturday 11am-9pm
- Sunday..... 11am-7pm

May 27 to August 10

- Monday-Saturday 10am-10pm
- Sunday..... 11am-8pm

August 11 to August 31

- Monday-Friday 4pm-9pm
- Saturday 10am-9pm
- Sunday..... 11am-7pm

September 2 to October 30

- Monday-Thursday Closed
- Friday..... 4pm-9pm
- Saturday 11am-9pm
- Sunday..... 11am-7pm

Holidays/Special Hours

- May 3 (Touch-A-Truck) 10am-9pm
- May 26 (Memorial Day) 10am-3pm
- June 20 (Glow Golf) 10am-11pm
- July 4 (Independence Day) 10am-3pm
- July 11 (Family Campout) 10am-6pm
- September 1 (Labor Day)..... 10am-3pm
- September 12 (Family Campout)..... 11am-6pm

Mini Golf Parties

Your party includes a two-hour rental of the Maryknoll Clubhouse party room and a discount on miniature golf admission or exclusive use of the red course for 1.5 hours. For more information and to book, please email lsetmetko@gepark.org.



Maryknoll splash park

845 Pershing Avenue, Glen Ellyn

Maryknoll Splash Park features 12 spray pieces including a water tower, team spray, water tunnel, and zero-depth pad. See rules and regulations at gepark.org/splashpark.

Splash Park Fees

The Splash Park is free and open to the public during daily open hours!

Splash Park Hours

Make a splash from May 25 to September 21, 2025. Must be a minimum of 65 degrees to open the splash park. Check gepark.org/hotline for up-to-date information including weather-related closings.

May 24 to August 11

Monday-Saturday 10am-6:30pm
 Sunday..... 11am-7pm

August 12 to September 21

Monday-Friday 10am-5pm
 Saturday..... 10am-6:30pm
 Sunday..... 11am-7pm

Holiday/Special Hours

May 26 (Memorial Day) 10am-3pm
 July 4 (Independence Day) 10am-3pm
 September 1 (Labor Day)..... 10am-3pm



Rentals

Splash Park Private Rental

The splash park is available for groups of 50 patrons or less outside of normal business hours. Available June through September; no private rentals on 5/26, 7/4, or 9/1. To book, email Lisa Semetko at lsemetko@gepark.org.

Splash Park Party

Host your child's party at the Maryknoll Splash Park. Reserve any of our Maryknoll Park rental spaces and head over to the splash park for some fun. For details and to book, email Lisa Semetko at lsemetko@gepark.org.



Sunset Pool Season Passes

Early Bird Sale: March 1-April 30, 2025

Season passes will go on sale March 1. Save on your season passes, which can be used for open or lap swim throughout the summer, by taking advantage of the Early Bird Sale from March 1 through April 30.

To purchase passes and get your Pool Photo ID (required for pool entry), please visit Spring Avenue Recreation Center, Main Street Recreation Center, or Ackerman Sports and Fitness Center. Pool passes may also be paid for online at gepark.org/membership prior to visiting a registration office to obtain your ID. Refunds are not given on season passes. (1s)

Look for the **2025 Sunset Pool schedule** in our Summer Playbook on **April 23!**

	Early Bird Sale R/NR	Regular Rates R/NR
	March 1-April 30	On/After May 1
Infant (under age 3)	Free	Free
Individual (ages 3-59 years)	\$135/\$185	\$145/\$195
Individual senior (ages 60 and up)	\$80/\$100	\$90/\$110
Family of two	\$190/\$230	\$200/\$240
Additional family members	\$35/\$60	\$45/\$70



Gators Swim Team

Ages 5-18 (as of 6/9/25)

Gators is a recreational swim team made up of youth ages 5-18 years. Participants are encouraged to attend practice Monday-Friday where they will learn the techniques and discipline of competitive swimming, and the value of sportsmanship and team spirit. The swim team will be divided into two teams, "A" which is more competitive and "B" which is for less experienced swimmers. Each swimmer can compete in up to five intramural swim meets which will take place on Tuesday and Thursday evenings at Sunset Pool throughout the season. Caregivers will be asked to volunteer their time at two meets. For questions on the program, contact Lisa Semetko at lsemetko@gepark.org. (Is)

Meet the Coaches: May 29, 6pm-7:30pm (optional)

Gators Season: June 9-July 25

New Gator Tryouts: June 4, 6pm-7pm (last names A-L)
June 5, 6pm-7pm (last name M-Z)

Championship Meet: July 24 (rainout date: July 25)

Gator Celebration: July 25

Swim Team is not a lesson program. To participate on the team, 5- to 8-years-olds must be able to comfortably swim 25 yards of freestyle and 25 yards of backstroke without stopping. Participants over 9-years-old must be able to swim 50 yards freestyle and backstroke without stopping. (Is)



Registration & Fees

Open registration will begin on February 3 at 8am.

The program fee includes a team t-shirt and sweatshirt; team swimsuit can be purchased separately. More information is available at www.gegators.com. Additional children must be in the same family.

Register by 5/28 (first come, first serve)

Boys Registration

#/Link	Age	Practice Time	R/NR	Add'l Child Fee
134771	7-8	7am-7:55am	\$350/\$425	\$320
134772	9-10	8am-8:55am	\$350/\$425	\$320
134760	11-12	9am-9:55am	\$350/\$425	\$320
134774	9-10	10am-10:55am	\$350/\$425	\$320
135484	11-12	10am-10:55am	\$350/\$425	\$320
134769	13+	11am-11:55am	\$350/\$425	\$320
134770	5-6	11am-11:45am	\$350/\$425	\$320

Girls Registration

#/Link	Age	Practice Time	R/NR	Add'l Child Fee
134777	7-8	7am-7:55am	\$350/\$425	\$320
134778	9-10	8am-8:55am	\$350/\$425	\$320
134773	11-12	9am-9:55am	\$350/\$425	\$320
134779	9-10	10am-10:55am	\$350/\$425	\$320
135485	11-12	10am-10:55am	\$350/\$425	\$320
134775	13+	11am-11:55am	\$350/\$425	\$320
134776	5-6	11am-11:45am	\$350/\$425	\$320

Inclusive Gators Program

Ages 7-18

If your swimmer has mild or moderate sensory difficulties that interfere with swimming, this program is for you. This unique swim team helps swimmers learn the ritual and routine of a swim practice. We'll prepare your swimmer to be successful in Gators by including them in a positive group experience that teaches them the skills they need for a more advanced swim team challenge. A mini swim meet will take place during the last practice. Each participant receives a shirt. Location: Sunset Pool.

#/Link	Day	Date	Time	R/NR
134714	M-Th	6/9-7/24	12-12:30pm	\$350/\$425



learn to swim

Learn to Swim provides a positive, fun-filled opportunity for children to learn skills that will help reduce the number of water accidents and to develop lifelong aquatic enjoyment. A testing day will take place on day one to ensure participants are placed into the correct level. Swim lessons run Monday through Thursday. In the event a class is canceled due to thunder or lightning, the class will be made up on Friday at the same time. No more than two classes will be made up per session. Refunds will not be issued for missed classes. If you have any questions, contact Lisa Semetko at lsemetko@gepark.org.

Adult/Tot Water Exploration

Ages 9 mos-3

Class is designed to make an infant’s first experience in the water positive and fun. Instructor will facilitate the lesson while caregivers are the main instructor for the class. Class will help develop comfort in the water, swimming readiness, floating with assistance, and blowing bubbles. Adults will be taught how to prevent and manage an aquatic emergency and basic CPR instruction. Location: Sunset Pool. (Is)

Exploration I

Ages 9 mos-1 ½

#/Link	Day	Date	Time	R/NR
134692	Su	6/8-6/15	10:15am-10:45am	\$26/\$42
134693	Su	7/13-7/20	9:30am-10am	\$26/\$42

Exploration II

Ages 1 ½-3

#/Link	Day	Date	Time	R/NR
134694	Su	6/8-6/15	8:45am-9:15am	\$26/\$42
134695	Su	6/8-6/15	9:30am-10am	\$26/\$42
134696	Su	7/13-7/20	9:30am-10am	\$26/\$42
134697	Su	7/13-7/20	10:15am-10:45am	\$26/\$42

Preschool Learn to Swim

Ages 3-5

This class covers swimming skills and water safety knowledge in a logical progression. Participants will learn and work on skills such as getting face/head wet, floating, gliding, and combined arm and leg action on front and back. All participants will be tested on the first day of class and placed into the correct level. Location: Sunset Pool. (Is)

#/Link	Day	Date	Time	R/NR
134657	M-Th	6/9-6/19	8:30am-9am	\$64/\$80
134658	M-Th	6/9-6/19	9:20am-9:50am	\$64/\$80
134659	M-Th	6/9-6/19	10:10am-10:40am	\$64/\$80
134660	M-Th	6/9-6/19	11am-11:30am	\$64/\$80
134661	M-Th	6/23-7/3	8:30am-9am	\$64/\$80
134662	M-Th	6/23-7/3	9:20am-9:50am	\$64/\$80
134663	M-Th	6/23-7/3	10:10am-10:40am	\$64/\$80
134664	M-Th	6/23-7/3	11am-11:30am	\$64/\$80
134665	M-Th	7/7-7/17	8:30am-9am	\$64/\$80
134667	M-Th	7/7-7/17	9:20am-9:50am	\$64/\$80
134668	M-Th	7/7-7/17	10:10am-10:40am	\$64/\$80
134669	M-Th	7/7-7/17	11am-11:30am	\$64/\$80
134670	M-Th	7/21-7/31	8:30am-9am	\$64/\$80
134671	M-Th	7/21-7/31	9:20am-9:50am	\$64/\$80
134672	M-Th	7/21-7/31	10:10am-10:40am	\$64/\$80
134673	M-Th	7/21-7/31	11am-11:30am	\$64/\$80

Youth Learn to Swim

Ages 6-14

This class covers swimming skills and water safety knowledge in a logical progression. Participants will learn and work on skills such as getting face/head wet, floating, gliding, and combined arm and leg action on front and back. All participants will be tested on the first day of class and placed into the correct level. Location: Sunset Pool. (Is)

#/Link	Day	Date	Time	R/NR
134675	M-Th	6/9-6/19	8:20am-9am	\$64/\$80
134676	M-Th	6/9-6/19	9:10am-9:50am	\$64/\$80
134677	M-Th	6/9-6/19	10am-10:40am	\$64/\$80
134678	M-Th	6/9-6/19	10:50am-11:30am	\$64/\$80
134679	M-Th	6/23-7/3	8:20am-9am	\$64/\$80
134680	M-Th	6/23-7/3	9:10am-9:50am	\$64/\$80
134681	M-Th	6/23-7/3	10am-10:40am	\$64/\$80
134682	M-Th	6/23-7/3	10:50am-11:30am	\$64/\$80
134683	M-Th	7/7-7/17	8:20am-9am	\$64/\$80
134685	M-Th	7/7-7/17	10am-10:40am	\$64/\$80
134686	M-Th	7/7-7/17	10:50am-11:30am	\$64/\$80
134687	M-Th	7/21-7/31	8:20am-9am	\$64/\$80
134688	M-Th	7/21-7/31	9:10am-9:50am	\$64/\$80
134689	M-Th	7/21-7/31	10am-10:40am	\$64/\$80
134690	M-Th	7/21-7/31	10:50am-11:30am	\$64/\$80

Private Lessons

All ages

Get a more personalized approach with our private swim lessons. These 30-minute one-on-one lessons are tailored to meet your personal needs and goals. During registration, you will be asked for your availability and skill level. Then, an instructor will contact you to set up the lesson. The wider your availability, the easier it is for us to schedule your lesson. Instructors will begin to set up lessons in early June. You must give 24-hours notice if you need to cancel or reschedule. (Is)

#/Link	# of Lessons	R/NR
134698	One	\$35/\$45
134699	Two	\$65/\$80
134700	Three	\$100/\$120
134701	Five	\$160/\$200

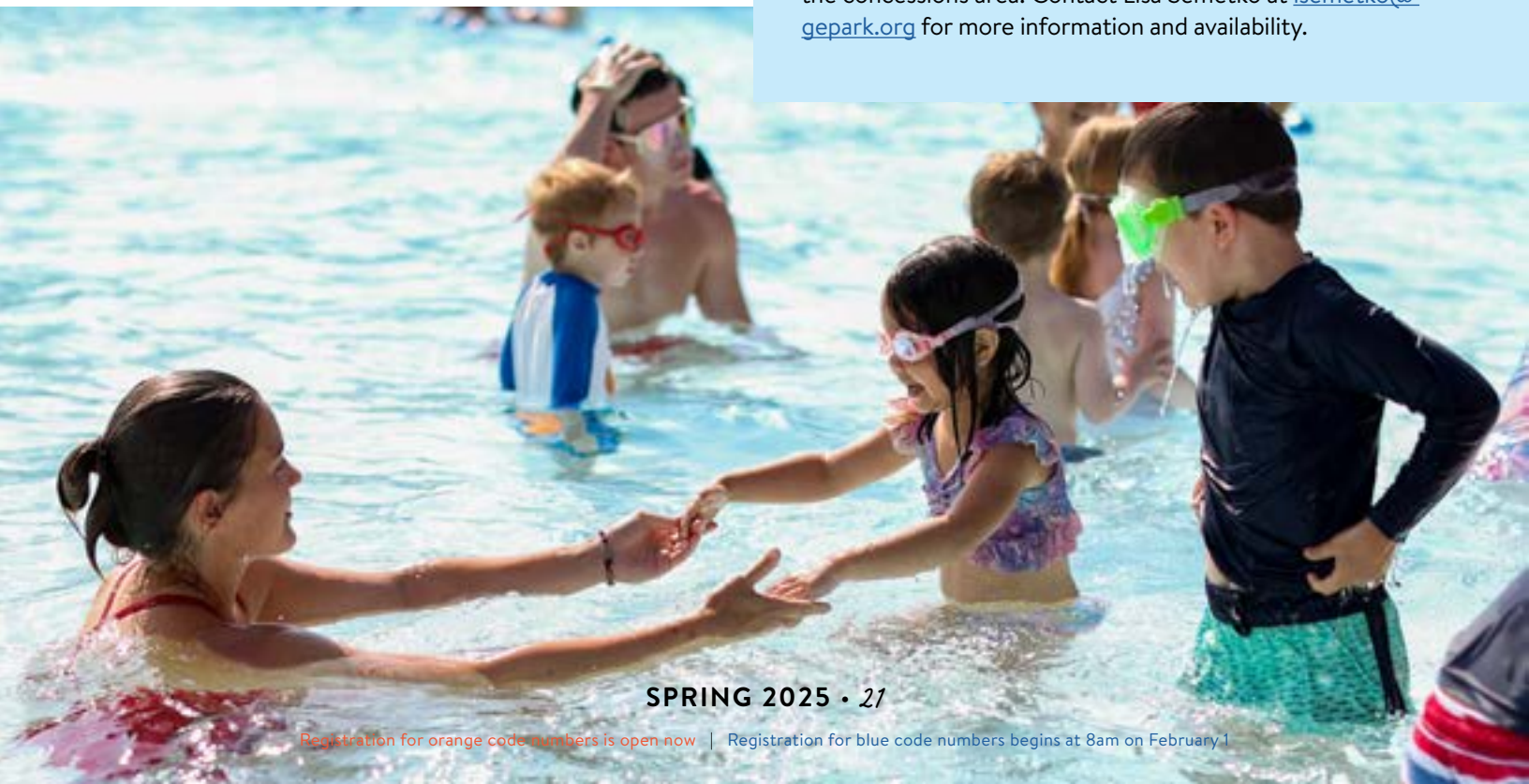
Rentals

Private Pool Rentals

Sunset Pool is available for private rentals from 7:30pm-9pm throughout the summer when events and programs are not running. Contact Lisa Semetko at lsemetko@gepark.org for more information and availability.

Birthday Parties

Host your party at Sunset Pool. For an additional charge, you can entertain your guests under the shade canopy in the concessions area. Contact Lisa Semetko at lsemetko@gepark.org for more information and availability.





preschool 2025/26 School Year

Curriculum

At our Preschool, children learn through an academic and play-based curriculum to facilitate learning concepts including writing, science, vocabulary, numbers, shapes, math, and other cognitive abilities. Program activities serve many developmental purposes; participants learn problem-solving skills and how to sort out and organize new ideas. They develop an understanding of social awareness and investigate and experiment with new possibilities. The academics incorporated into the program will ensure students are prepared to move to the next level and eventually be Kindergarten-ready.

Our program is a mixture of teacher-guided activities and playtime, with small and large group activities based around a weekly theme. Children engage in fine and large motor skill activities, art projects, music, books, dramatic play, cooking, writing, and more. Children also have monthly visits from B#Sharp Music for Children and the Park District Environmental Outreach Educator. Contact kspeck@gepark.org at (630) 942-7268 with questions.

Programs & Requirements

Tiny Tot 2-Year-Olds

Children must be 2 as of Sept. 1, 2025.

This class is designed to meet the unique needs of 2-year olds preparing for their next school year. We focus on developing social skills, introducing a structured classroom environment, and encouraging learning through play. Play-based activities are central to the program, fostering a fun and engaging atmosphere for the children. If a potty accident occurs, caregivers will be promptly informed.

2-Year-Olds

Children must be 2 as of Mar. 15, 2025.

Geared toward having a successful first school-away-from-caregiver experience while preparing for the three-year-old program. Emphasis is placed on socialization skills and introduction to a structured class. In case of potty accidents, caregivers will be notified.

3-Year-Olds

Children must be 3 as of Sept. 1, 2025.

Geared toward having a successful first school experience. Emphasis is placed on social skills, fine motor skills, shapes, colors, name recognition, following direction, sharing, and play. Must be able to use the restroom independently.

4-Year-Olds

Children must be 4 as of Sept. 1, 2025.

Designed for developing readiness and success in kindergarten. Emphasis is placed on the development of academic skills through structured activities, including math concepts, lower/upper case letters, letter sound recognition, writing/sight words, and developing independence.

Age Guidelines: The Glen Ellyn Park District follows District 41 age guidelines. For questions regarding your child's age, please refer to the [District 41 website](#) for more information.

Registration

Priority Registration

Priority registration for returning participants takes place in January. Notification regarding registration are sent to current participants following winter break.

Open Registration

Registration for the 2025-2026 school year will open on February 10, 2025. New families registering for the Preschool Program may do so online at gepark.org/register, or in person at the Spring Avenue or Main Street Recreation Centers. Adults/caregivers must submit a copy of their child's birth certificate when registering in person. If registering online, birth certificates can be submitted to the office or by email to kspeck@gepark.org by September 1, 2025. If a copy of your child's birth certificate is not received by September 1, your spot in the selected class may be forfeited.

Schedule

The 2025-2026 preschool year begins the week of September 1, 2025, and concludes the week of May 11, 2026. Classes will not meet on legal public holidays as determined by the District 41 school calendar. There may be additional dates, which will be stated in your Glen Ellyn Park District Preschool Calendar.

Payment

Preschool uses automatic billing/payments. A separate nonrefundable commitment fee of \$150 will be required upon registration. The yearly class fee listed is divided into eight equal amounts charged to your credit card each month July-February. You may also pay for the entire year at registration. Registration cancellations for the school year must be made prior to August 1st. Cancellations made August 1st and thereafter will be assessed additional cancellation fees.

Waiting Lists

If classes are full, families are welcome to add children to the waitlist at no charge and will be called in order if space becomes available.





Registration

Class	Location	Room	Days	Dates	Time	R/NR Annual or Installment Fees	#/Link
2-Year-Old <i>as of 3/15/25</i>	Spring Avenue	Multi B	Tu,Th	9/9-5/14	9am-11am	\$1,344 annually or \$168 eight installments	134041
2-Year-Old <i>as of 3/15/25</i>	Spring Avenue	Multi B	M,W,F	9/8-5/15	9am-11am	\$2,016 annually or \$252 eight installments	134040
Tiny Tot 2-Year-Old <i>as of 9/1/25</i>	Spring Avenue	TBD	Tu,Th	9/9-5/14	9:30am-11am	\$1,008 annually or \$126 eight installments	134100
Tiny Tot 2-Year-Old <i>as of 9/1/25</i>	Spring Avenue	TBD	M,W	9/8-5/13	9:30am-11am	\$1,008 annually or \$126 eight installments	134101
3-Year-Old	Main Street	Room 204	M-Th	9/2-5/14	12:15pm-2:45pm	\$3,300 annually or \$412.50 eight installments	134044
3-Year-Old	Spring Avenue	Preschool Room	M,W,F	9/3-5/15	8:45am-11:15am	\$2,475 annually or \$309.38 eight installments	134045
3-Year-Old	Main Street	Room 204	Tu,Th	9/2-5/14	8:45am-11:15am	\$1,650 annually or \$206.25 eight installments	134043
3-Year-Old	Main Street	Room 204	M,W,F	9/3-5/15	8:45am-11:15am	\$2,475 annually or \$309.38 eight installments	134042
3-Year-Old	Spring Avenue	Preschool Room	Tu,Th	9/2-5/14	8:45am-11:15am	\$1,650 annually or \$206.25 eight installments	134046
4-Year-Old	Main Street	Room 114	M-Th	9/2-5/14	8:45am-11:15am	\$3,300 annually or \$412.50 eight installments	134049
4-Year-Old	Main Street	Room 106	M-Th	9/2-5/14	12:15pm-2:45pm	\$3,300 annually or \$412.50 eight installments	134048
4-Year-Old	Spring Avenue	Preschool Room	M-Th	9/2-5/14	12:15pm-2:45pm	\$3,300 annually or \$412.50 eight installments	134050
4-Year-Old	Main Street	Room 106	M-F	9/2-5/14	8:45am-11:15am	\$4,125 annually or \$515.63 eight installments	134047



Preschool Playtime

Ages 3-4

This structured after school playtime activity at Main Street Recreation Center (Room 114) and Spring Avenue Recreation Center includes free play, crafts, games, and gym time for your little one to further explore school. Register from one to four days per week for the full school year. Billing is on a monthly basis, beginning September 1. Space is limited per day. Please choose your day(s) upon registration. (ks)

Registration can be completed online or in-person at Spring Avenue or Main Street Recreation Centers. Min/Max: 8/14.

Full School Year (32 Weeks)

R/NR Per Day: \$788 annually or \$98.50 eight installments

Main Street Recreation Center

#/Link	Day	Date	Time
134032	M	9/8-5/11	11:45am-2:15pm
134033	Tu	9/9-5/12	11:45am-2:15pm
134034	W	9/10-5/13	11:45am-2:15pm
134035	Th	9/11-5/14	11:45am-2:15pm

Spring Avenue Recreation Center

#/Link	Day	Date	Time
134039	M	9/8-5/11	11:45am-2:15pm
134038	Tu	9/9-5/12	11:45am-2:15pm
134037	W	9/10-5/13	11:45am-2:15pm
134036	Th	9/11-5/14	11:45am-2:15pm

Kindergarten Enrichment

Ages 5-6

The Glen Ellyn Park District offers a quality enrichment experience for kindergarten-age children attending half-day Kindergarten. This popular program, held at Main Street Recreation Center (Room 304), is designed to enrich and enhance the regular district Kindergarten activity in the areas of motor skills, language arts, music, and creative arts. The goal is to allow each child to mature academically and socially in a creative, encouraging, and challenging learning environment. Classes offer a balance of both structured and unstructured activities. Activity areas to choose from include building, quiet time, dramatic play, small and large motor activities as well as areas for music, art, literacy, and science/discovery. We will provide a space for kids to eat lunch after the AM or prior to the PM KE classes. Please send a nuTu-Free sack lunch if you plan to have your child eat lunch at KE. Priority registration for Kindergarten Enrichment will take place for current families in January 2025. (ks)

Registration can be completed online or in-person at Spring Avenue or Main Street Recreation Centers. Min/Max: 8/14.

Four Days/Week

R/NR: \$3,520 annually or \$440 eight installments plus a separate \$150 nonrefundable deposit

Five Days/Week

R/NR: \$4,400 annually or \$550 eight installments plus a separate \$150 nonrefundable deposit

Main Street Recreation Center

#/Link	Day	Date	Time
134052	M-F	9/2-5/15	8:45am-11:30am
134051	M-Th	9/2-5/13	12:30pm-3:15pm



early childhood interest

who to contact:

- (aa) Anastasia Aubie, aaubie@gepark.org
- (bt) Brad Thomas, bthomas@gepark.org
- (ks) Katy Speck, kspeck@gepark.org
- (rb) Rebecca Brush, rbrush@gepark.org

open gym

Gymnastics Stay & Play

Preschool and under

Children can stay active and play in the Gymnastics Center. This safe and fun environment is the perfect spot for your child to interact with you and other peers. Pre-registration is not required, but arrive early as space is limited. Children must be accompanied and supervised by an adult. (bt)

Daily R/NR: \$5/\$8

10-Visit Punch Card R/NR: \$45/\$72

Day	Date	Time
F	Now-3/21	9am-11am
F	4/11-5/30	9am-11am

Adult & Tot

Ages 1 ½-4 with adult

Children can stay active and play! This safe and fun environment is the perfect place for your child to interact with you and other peers. Sports and other recreational equipment will be provided. No preregistration is necessary for single-day drop-ins. Children must be accompanied and supervised by an adult. Location: Main Street Recreation Center. (ks)

Daily R/NR: \$5/\$8

10-Visit Punch Card R/NR: \$45/\$72

Day	Date	Time
M	1/6-3/24	9am-11am

Messy Fingers

Ages 2 ½-5

Children will enjoy exploring the world of art through painting with different kinds of brushes, stamps, sponges, and other materials. They will have the opportunity to create a multitude of unique art projects, fostering their discovery and appreciation of art. We anticipate some messiness, so please bring a paint smock or an extra change of clothes. Only children need to register, and they must be accompanied by an adult during the program. Location: Main Street Recreation Center. (aa)

#/Link	Day	Date	Time	R/NR
134302	M	3/3-3/24	11:15am-12pm	\$40/\$55
134303	Th	3/6-3/27	10am-10:45am	\$40/\$55
134304	M	4/7-4/28	11:15am-12pm	\$40/\$55
134305	Th	4/10-5/1	10am-10:45am	\$40/\$55

Shining Star Productions: Little Actors Club

Ages 3-5

Children love this innovative drama class that develops their imagination and introduces little actors to the performing arts in a fun and creative atmosphere. Each week is an exciting adventure into the imagination with changing themes, music, costumes, and props, as well as games. Club members learn theatre terms and gain enhanced spontaneity, creativity, and self-esteem. Each week, students will learn a song and joke. No class on 4/30. Location: Main Street Recreation Center. (aa)

#/Link	Day	Date	Time	R/NR
134301	W	4/9-5/21	5:30pm-6:15pm	\$75/\$88



SPRING 2025 • 27

Registration for orange code numbers is open now | Registration for blue code numbers begins at 8am on February 1



Dino Hour

Ages 3-5

Bring your little one for an hour of dinosaur discovery fun. They will see real dinosaur fossils, listen to a story, make a craft to take home, and dig in the sand to assemble dinosaur puzzle pieces. Registration closes one week prior to class start date. Location: Main Street Recreation Center. (ks)

#/Link	Day	Date	Time	R/NR
134630	Sa	4/26	10am-11am	\$39/\$47
134631	Sa	4/26	11:30am-12:30pm	\$39/\$47

Safe Kids

Ages 4-7

This interactive class focuses on promoting safety-conscious thinking and making safe choices both at home and in the surrounding environment. Children will learn what to do in emergency situations, when to call 911, and how to handle encounters with strangers. Each child will receive a safety packet to take home, reinforcing the lessons learned. Location: Spring Avenue Recreation Center. (ks)

#/Link	Day	Date	Time	R/NR
134619	Tu	4/8	4pm-5pm	\$30/\$36

Safe Kids with First Aid

Ages 4-7

Safety and first aid go hand in hand. In this program, children will not only learn to think safely and make safe choices but also receive basic first aid instruction. They will be equipped with knowledge about treating minor cuts, bumps, bruises, nosebleeds, and minor burns. Each child will receive a safety packet and create a small first aid kit to take home. Location: Spring Avenue Recreation Center. (ks)

#/Link	Day	Date	Time	R/NR
134620	Th	4/10	4pm-5pm	\$30/\$36



Starlight Studio: Shining Stars

Ages 18 mos-5

Introduce yoga practice to your littlest ones in this new class. Participants will dance their way into poses called a “Star Dance,” playfully discovering nature with rhythm and song as they journey to distant lands of imagination with animal stories. The class ends with a sweet moment of connection and meditation with the singing bowl. No class on 4/2. Location: Spring Avenue Recreation Center. (ks)

#/Link	Day	Date	Time	R/NR
134468	W	3/5-4/16	9:20am-10am	\$94/\$113
135456	W	4/23-5/28	9:20am-10am	\$94/\$113

Starlight Studio: Preschool Extended Day

Ages 2-4

Experience movement, breath, and mindfulness as Starlight Studio curates an hour of self-discovery. Participants will dance their way into poses called a “Star Dance,” playfully discovering nature with song as they journey to a distant land of imagination with yoga. Class ends with a calming “Starlight Sequence” to help center and ground preschoolers for the day ahead. No class on 4/2. Location: Spring Avenue Recreation Center. (ks)

#/Link	Day	Date	Time	R/NR
134467	W	3/5-4/16	11:15am-12:30pm	\$94/\$113
135455	W	4/23-5/28	11:15am-12:30pm	\$94/\$113

Starlight Studio: Kindergarten Extended Day

Ages 4-6

Experience movement, breath, and mindfulness as Starlight Studio curates an hour of self-discovery. Participants will dance their way into poses called a “Star Dance,” playfully discovering nature with song as they journey to a distant land of imagination with yoga. Class ends with a calming “Starlight Sequence” to help center and ground kindergartners for the day ahead. No class on 4/2. Location: Spring Avenue Recreation Center. (ks)

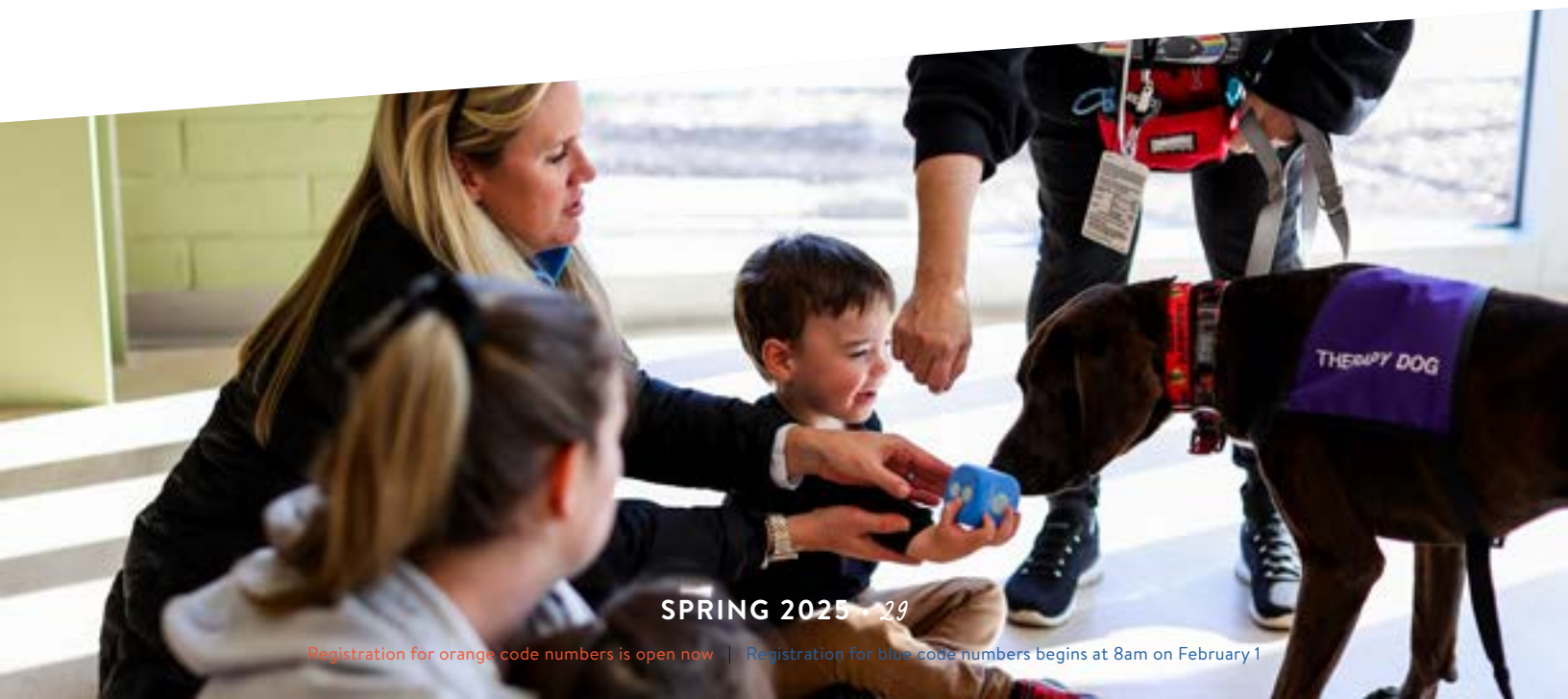
#/Link	Day	Date	Time	R/NR
134466	W	3/5-4/16	3:15pm-4:30pm	\$94/\$113
135457	W	4/23-5/28	3:15pm-4:30pm	\$94/\$113

Tails and Tales

Ages 2 and up

Do you have a child who loves dogs? Stop by for a read-aloud, dog-themed story and a visit with dogs from Rainbow Animal Assisted Therapy. Children will learn about dog safety, play games, and participate in other activities with the therapy dogs. Register under the child’s name. Registration includes caretaker attendance. 100% of registration proceeds are donated to Rainbow Animal Assisted Therapy. Location: Ackerman SFC. (rb)

#/Link	Day	Date	Time	R/NR
134458	W	4/9	11am-12:30pm	\$7
134459	W	4/23	4pm-5:30pm	\$7
134460	W	5/14	11am-12:30pm	\$7
134461	W	5/28	4pm-5:30pm	\$7



Anima: KidSingers

Ages 5-6

Sing, play, and grow with KidSingers! Kindergartners will love singing, dancing, moving, and playing games each week under the guidance and expertise of this collaboration with Anima-Glen Ellyn Children's Chorus. Boost your child's confidence with a class they'll look forward to! Other dates and times available at anima-singers.org. Location: Main Street Recreation Center. (aa)

#/Link	Day	Date	Time	R/NR
134367	Tu	4/8-5/13	3:30pm-4:15pm	\$200

Rock N Kids: Baby Rock

Ages 3 mos-12 mos

Wiggle and giggle with Baby Rock. A unique combination of sensory experiences with stimulating music and exercises to help strengthen and stretch your baby. Activities will include sing alongs, exposure to simple instruments and sensory props, bean bag massages, motion exercises, bubbles, and more. Please bring a blanket or mat and get ready for a rockin' good time with your tiniest dancer. Location: Main Street Recreation Center. (ks)

#/Link	Day	Date	Time	R/NR
134372	F	4/11-5/23	11:50am-12:20pm	\$73/\$88



Rock N Kids

Ages 12 mos-5

Maracas and clackers and tambourines, too; it's musical fun just for you! Our active, music-based, creative play programs include songs and rhymes, rhythm and coordination, fine and gross motor, imagination and sensory, listening and following directions skills, and more. Structured activities are age appropriate by class and include use of engaging rhythm instruments, movement props, and sensory materials. Sing, dance, play, learn and imagine! Location: Main Street Recreation Center. (ks)

Tot Rock (Ages 12 mos-2½)

#/Link	Day	Date	Time	R/NR
134368	F	4/11-5/23	8:45am-9:25am	\$82/\$98
134369	F	4/11-5/23	9:30am-10:10am	\$82/\$98

Kid Rock (Ages 2-3)

#/Link	Day	Date	Time	R/NR
134370	F	4/11-5/23	10:15am-10:55am	\$82/\$98

Family Rock (Ages 12 mos-5)

#/Link	Day	Date	Time	R/NR
134371	F	4/11-5/23	11am-11:40am	\$82/\$98

Wee Heart Music: Music Together Family Classes

Ages 5 and under

Enjoy eight weeks of music, movement, learning, and growth as you sing, dance, and play music together. Each semester introduces a new song collection. Tuition includes materials for at-home listening and play. There is a \$50 discount for the second child. Siblings under 9 months at the time of registration are free. No class on 3/31-4/4. Location: Main Street Recreation Center. (ks)

#/Link	Day	Date	Time	R/NR
134621	M	3/24-5/19	9:15am-10am	\$192/\$230
134622	M	3/24-5/19	10:15am-11am	\$192/\$230
134623	M	3/24-5/19	11:15am-12pm	\$192/\$230
134624	Tu	3/25-5/20	9:15am-10am	\$192/\$230
134625	Tu	3/25-5/20	10:15am-11am	\$192/\$230
134626	Tu	3/25-5/20	11:15am-12pm	\$192/\$230
134627	Sa	4/5-5/24	9:30am-10:15am	\$192/\$230
134628	Sa	4/5-5/24	10:30am-11:15am	\$192/\$230



youth and teen interest

who to contact:

- (aa) Anastasia Aubie, aaubie@gepark.org
- (ks) Katy Speck, kspeck@gepark.org
- (rb) Rebecca Brush, rbrush@gepark.org
- (sg) Sean Gallagher, sgallagher@gepark.org

Babysitting for Success

Ages 10-15

Become the best babysitter you can be through engaging discussions, role-playing, and practical experiences. Learn essential skills such as diapering, feeding, playing with children, understanding child development, handling emergencies, and administering first aid. Bring a snack and a doll to class, and upon completion, receive a certificate of achievement. Resource materials are included to support your learning. Location: Spring Avenue Recreation Center. (ks)

#/Link	Day	Date	Time	R/NR
134474	Tu,Th	3/11-3/18	4pm-7pm	\$110/\$132
134475	M,W-Th	5/19-5/22	4pm-7pm	\$110/\$132

Artistry Unleashed: Acrylic Painting for Beginners

Ages 7-14

In this class budding artists will gather around easels to unleash their creativity with acrylic paints. Guided by an experienced instructor, they learn techniques to express themselves through vibrant colors and bold brushstrokes. Location: Main Street Recreation Center. (aa)

#/Link	Day	Date	Time	R/NR
134306	Th	3/6-3/27	4:15pm-5:30pm	\$48/\$60
134307	Th	4/10-5/1	4:15pm-5:30pm	\$48/\$60

Sew Simple: Machine Sewing Fleece Hat

Ages 9-12

Show ‘em you are someone that wears many hats this winter! Flex your sewing skills and create your own fleece hat using a sewing machine in this one-day workshop. Bring your own sewing machine or use ours. All supplies provided. Prior sewing machine experience is recommended. Location: Spring Avenue Recreation Center. (aa)

#/Link	Day	Date	Time	R/NR
134312	Th	3/6	4pm-6pm	\$52/\$62

Sew Simple: Machine Sewing Felt Monster

Ages 8-12

In this fun class, participants will use sewing machines to create their own cute felt monsters. They’ll learn simple sewing techniques and add personal touches to make each monster unique. Everyone will leave with an adorable handmade creature to keep! Location: Spring Avenue Recreation Center. (aa)

#/Link	Day	Date	Time	R/NR
134314	F	3/21	4pm-6pm	\$58/\$70



Sew Simple: Machine Sewing Pillowcase

Ages 9-12

In this beginner-friendly sewing class, participants will learn to make their own pillowcases using a sewing machine. Students will practice basic sewing techniques and complete a cozy pillowcase to take home. Please bring one yard of woven cotton fabric to personalize your project. Location: Spring Avenue Recreation Center. (aa)

#/Link	Day	Date	Time	R/NR
134315	Th	4/17-4/24	4pm-5:45pm	\$91/\$109

Sew Simple: Hand Sewing

Ages 5-7

Discover the wonderful world of sewing and watch your child's fine motor skills flourish while cultivating patience and building confidence. Join us in this beginner-level class where participants will learn the art of hand sewing. Through step-by-step instructions, children will create fun projects while mastering various hand stitches, threading a needle, and sewing on buttons. Location: Spring Avenue Recreation Center. (aa)

Shamrock

#/Link	Day	Date	Time	R/NR
134308	Tu	3/11	4pm-5:30pm	\$28/\$33

Easter Egg

#/Link	Day	Date	Time	R/NR
134309	Tu	4/15	4pm-5:30pm	\$28/\$33

Tooth Fairy Pillow

#/Link	Day	Date	Time	R/NR
134310	Tu	4/29	4pm-5:30pm	\$28/\$33

Spring Flower

#/Link	Day	Date	Time	R/NR
134311	Tu	5/13	4pm-5:30pm	\$28/\$33

Sew Simple: Machine Sewing - American Girl Doll Sewing

Ages 8-12

Make your favorite doll or stuffed animal a handmade apron. In this class, participants will sew a doll-sized apron using a sewing machine. Bring your own sewing machine or use one of ours. Fabric and supplies provided. Location: Spring Avenue Recreation Center. (aa)

#/Link	Day	Date	Time	R/NR
134313	Th	3/20	4pm-6pm	\$52/\$62

Clay Creations

Ages 6-10

See the possibilities a little bit of clay and a lot of imagination can bring. Participants will learn various techniques in hand-building including coil, slab, slumping, and glazing to transform wet clay into a fun and functional seasonal ceramic piece. Items will be kiln fired and ready for pick-up two weeks after class. Any cancellations must be made 48 hours prior to class time. Location: Ackerman SFC. (rb)

#/Link	Day	Date	Time	R/NR
134436	Su	4/6	11am-12:30pm	\$50/\$65
134437	Su	4/19	11am-12:30pm	\$50/\$65
135486	Su	5/4	11am-12:30pm	\$50/\$65
134438	Su	5/18	11am-12:30pm	\$50/\$65





Fashion Illustration Workshop

Ages 9-13

Join this creative workshop experience where students will learn the fundamentals of fashion illustration. Practice drawing anatomy, proportions, fabric rendering, color theory, and how to capture fabric details in illustrations. Materials will be provided but students are welcome to bring their own pencils, paper, erasers, and preferred coloring materials. Location: Ackerman SFC. (rb)

#/Link	Day	Date	Time	R/NR
134462	Th	3/13	4pm-6:30pm	\$45/\$55
134463	Th	5/8	4pm-6:30pm	\$45/\$55

Fashion Illustration

Ages 9-13

Does your tween have a passion for fashion? This class teaches foundational skills for fashion illustration including figure drawing, how to use color, and how to render fabrics. Participants will experiment with a variety of mediums to develop their personal style and create a final project that will showcase their creative talents. All supplies are provided. Location: Ackerman SFC. (rb)

#/Link	Day	Date	Time	R/NR
134476	Sa	5/3-5/31	11am-12pm	\$50/\$60

Glitzy Girlz: Neon Glam Jam Dance Party

Ages 4-11

Glitzy Girls staff will give each participant a pampering of glam with neon hair clip-in, neon make-up sparkles, and neon nail polish application. Each person decorates a unique craft with a neon color and accents like jewels and personalization. They will design a cool beaded bracelet with charm. Our night ends with retro lights dance party to popular songs. A neon glam bag goes home with each guest. Location: Spring Avenue Recreation Center. (aa)

#/Link	Day	Date	Time	R/NR
134319	Th	4/10	6pm-7:15pm	\$40/\$55

Glitzy Girlz: Adult/Child: Hidden Treasures Night

Ages 3-10

Come join Glitzy Girlz on a date with a caregiver or guardian to find treasures! Our staff will lead the families on a treasure hunt to reveal a chest with fun goodies to take home. Together, they will decorate a wooden treasure chest with paints, jewels, coins and personalization. They will design a beaded item together with assorted theme beads. This class is full of treasures and memories forever. Great class for Mother's Day. Location: Spring Avenue Recreation Center. (aa)

#/Link	Day	Date	Time	R/NR
134320	Th	5/8	6pm-7pm	\$40/\$55
134321	Tu	5/13	6pm-7pm	\$40/\$55



Shining Star Productions: Young Actors Club

Ages 6-8

Immerse yourself in the world of drama and imagination in this fast-paced club. With changing themes, music, and games each week, children will explore theatre terms, enhance spontaneity, build self-esteem, and have a blast. Expect to learn a short song and a new joke every week! Each session offers unique content, ensuring a fresh experience for returning participants. No class on 4/30. Location: Main Street Recreation Center. (aa)

#/Link	Day	Date	Time	R/NR
134300	W	4/9-5/21	6:30pm-7:15pm	\$75/\$88

Sticky Fingers Cooking: 'Cool'inary Cooking Club

Ages 6-12

Your kids can have a blast every week discovering how easy and fun it is to cook tasty, healthy, globally inspired recipes! Our interactive cooking classes incorporate S.T.E.A.M., culture, language, geography, history, and more. Sticky Fingers Cooking offers young chefs the chance to explore exciting tastes, nourish their bodies and minds. Our talented and experienced Chef Instructors bring all the ingredients, equipment, and supplies to lead engaging, fun, and interactive cooking classes with your young chefs in training. Location: Spring Avenue Recreation Center. (aa)

#/Link	Day	Date	Time	R/NR
134318	Th	4/3-5/22	4pm-5pm	\$250/\$300

Piano for Kids: Private Lessons with Miss Monica

Ages 7-16

Enjoy engaging and inspiring piano lessons with Miss Monica as you learn to play fun and challenging songs. Using the Faber Piano Adventures curriculum (purchased by student) and supplemented with a variety of piano learning resources, students will play songs with both hands as they learn about the treble and bass clef, key signatures, scales and tempo. Student's piano learning is enhanced with theory, chord playing, improvisation and composition! Students must have completed Beginner 2 class or have instructor approval to enroll. No class on 5/8 or 5/26. Location: Main Street Recreation Center. (ks)

#/Link	Day	Date	Time	R/NR
134632	Th	5/1-6/26	4pm-4:30pm	\$312/\$374
134633	Th	5/1-6/26	5pm-5:30pm	\$312/\$374
134634	Th	5/1-6/26	6pm-6:30pm	\$312/\$374
134635	M	5/5-6/30	4pm-4:30pm	\$312/\$374
134636	M	5/5-6/30	5pm-5:30pm	\$312/\$374
134637	M	5/5-6/30	6pm-6:30pm	\$312/\$374
134638	Tu	5/6-6/24	4pm-4:30pm	\$312/\$374
134639	Tu	5/6-6/24	5pm-5:30pm	\$312/\$374
134640	Tu	5/6-6/24	6pm-6:30pm	\$312/\$374

Piano for Kids: Private Lessons with Miss Wynne

Ages 6-12

Enjoy engaging and inspiring piano lessons as you learn to play fun and challenging songs. Using the Faber Piano Adventures curriculum (purchased by student) and supplemented with a variety of piano learning resources, students will play songs with both hands as they learn about the treble and bass clef, key signatures, scales and tempo. Student's piano learning is enhanced with theory, chord playing, improvisation and composition! Students must have completed Beginner 2 class or have instructor approval to enroll. Location: Main Street Recreation Center. (ks)

#/Link	Day	Date	Time	R/NR
134641	W	5/7-6/25	4pm-4:30pm	\$291/\$349
134642	W	5/7-6/25	4:30pm-5pm	\$291/\$349
134643	W	5/7-6/25	5pm-5:30pm	\$291/\$349
134644	W	5/7-6/25	5:30pm-6pm	\$291/\$349



Piano for Kids: Semi-Private Lessons

Ages 7-16

Start or continue your piano journey with Miss Monica while enjoying the camaraderie of learning alongside another student. Students must have completed Beginner 2 class or have instructor approval to enroll. No class on 5/8. Location: Main Street Recreation Center. (ks)

#/Link	Day	Date	Time	R/NR
134645	Th	5/1-6/26	4:30pm-5pm	\$229/\$275
134646	Th	5/1-6/26	5:30pm-6pm	\$229/\$275
134647	M	5/5-6/30	4:30pm-5pm	\$229/\$275
134648	M	5/5-6/30	5:30pm-6pm	\$229/\$275
134649	Tu	5/6-6/24	4:30pm-5pm	\$229/\$275
134650	Tu	5/6-6/24	5:30pm-6pm	\$229/\$275

Piano: Rockin' with Chords

Ages 10-17

Let's have some fun learning how to read a pop music lead sheet! We will learn to play left hand chord progressions in and the theory behind it. This class can be taken alone or as a supplement to a weekly private lesson. Questions may be directed to the instructor-Miss Monica. There are no required lesson books, however a \$20 materials fee is due the first day of class. Prerequisite: Students should be at a Faber 2A level or higher. No class on 5/26. Location: Main Street Recreation Center. (ks)

#/Link	Day	Date	Time	R/NR
134651	M	5/5-6/30	6:30pm-7:10pm	\$229/\$275



Bricks 4 Kidz: LEGO® STEM Workshops: Simple Machines

Ages 5-9

Delve into the world of simple machines. Students will learn all about various simple machines: levers, pulleys, inclined planes, and then have the opportunity to build their own simple machines entirely from LEGO® bricks. Using our exclusive kits and model plans, students will construct exciting moving models. These one-of-a-kind creations incorporate gears, axles, pulleys, motors, and battery packs. Together, we will explore the simple machines that play crucial roles in our everyday lives. Location: Main Street Recreation Center. (ks)

#/Link	Day	Date	Time	R/NR
134615	M	3/3-3/24	5pm-6pm	\$80/\$120

Bricks 4 Kidz: LEGO® STEM Workshops: Engineering & Arch

Ages 5-9

This engineering workshop is all about amazing and powerful forces of nature. Students explore the when, where, how, and why of all kinds of natural phenomena. Participants will examine a map of the Pacific “Ring of Fire” where most tsunamis occur and a diagram of the tectonic plates. They will also learn how their movement creates earthquakes, define the area known as “Tornado Alley” in North America, and find out what hurricanes are called in different parts of the world. These lessons are designed to improve your child’s understanding of the forces of nature and how to be safe during them. Participants will love to build moving models of a tornado, a whirlpool, an earthquake, cyclone, and more. Location: Main Street Recreation Center. (ks)

#/Link	Day	Date	Time	R/NR
134618	M-F	3/31-4/4	9am-12pm	\$232/\$278

Bricks 4 Kidz: LEGO® STEM Workshops: Forces of Nature

Ages 5-9

This engineering workshop is all about amazing and powerful forces of nature. Students explore the when, where, how, and why of all kinds of natural phenomena. Participants will examine a map of the Pacific “Ring of Fire” where most tsunamis occur and a diagram of the tectonic plates. They will also learn how their movement creates earthquakes, define the area known as “Tornado Alley” in North America, and find out what hurricanes are called in different parts of the world. These lessons are designed to improve your child’s understanding of the forces of nature and how to be safe during them. Participants will love to build moving models of a tornado, a whirlpool, an earthquake, cyclone, and more. Location: Main Street Recreation Center. (ks)

#/Link	Day	Date	Time	R/NR
134617	M	4/7-4/28	5pm-6pm	\$80/\$120

Brick: LEGO® STEM Workshops: Transportation Timeline

Ages 5-9

Students will explore the history of transportation from horse and buggy and trains to the development of the automobile and flight. Each lesson introduces terminology related to each mode of transportation, like “lift and propulsion” for the airplane, as well as describes how each “vehicle” works. Students will use our proprietary project kits and model plans to build exciting moving LEGO® creations. Our one-of-a-kind models incorporate gears, axles, motors, and battery packs. Students will follow our step-by-step model plans to create their vehicle, then customize it to their own specifications and take a mini figure for a ride. Location: Main Street Recreation Center. (ks)

#/Link	Day	Date	Time	R/NR
134616	M	5/5-5/19	5pm-6pm	\$65/\$78



RoboThink: Trains, Planes, & Automobiles

Ages 7-11

Explore the world of transportation with RoboThink! In Trains, Planes, & Automobiles, students build robots based on our favorite vehicles from the RoboThink curriculum, from cars to planes and everything in between. With motors, gears, batteries, and mainboards, kids will construct fun robot designs while gaining valuable STEM skills. No class on 4/1. Location: Main Street Recreation Center. (ks)

#/Link	Day	Date	Time	R/NR
134473	Tu	3/11-4/15	4:30pm-6pm	\$208/\$250

Computer Explorers: Robot Academy

Ages 7-12

Embark on a hands-on exploration of the fascinating world of robotics and coding. Through experiments, exploration, and collaboration, you'll meet different robots and learn about the challenges of programming and problem-solving. Discover the exciting possibilities that robotics offer while gaining valuable skills in this interactive learning environment. Location: Main Street Recreation Center. (ks)

#/Link	Day	Date	Time	R/NR
134629	Th	4/10-5/1	6pm-7:15pm	\$91/\$109

Nexplorers: 3D Printing

Ages 5-13

Science Wiz is built upon inquiry, experimentation, and play! In each course, students will dive deep into scientific concepts such as electricity, inventions, sound, energy, physics, light, DNA, magnetism, and more. Each student will receive their very own Science Wiz kit to explore fundamental scientific ideas through hands-on play and activities. They will conduct experiments, many of which they can bring home to share with family and friends. Location: Main Street Recreation Center. (ks)

Ages 5-8

#/Link	Day	Date	Time	R/NR
134403	W	3/5-4/23	4:30pm-5:30pm	\$281/\$337

Ages 7-13

#/Link	Day	Date	Time	R/NR
134404	W	3/5-4/23	5:30pm-6:30pm	\$281/\$337



Little Doctor School

Ages 4-6

These future doctors will learn about prescriptions, explore the brain and spine, and learn about vital bodily functions through hands-on activities and role-play. Students will build a first aid kit and create models of the brain and spine.

Location: Main Street Recreation Center. (ks)

#/Link	Day	Date	Time	R/NR
134471	Th	4/10-5/15	4:15pm-5:15pm	\$143/\$172

Little Veterinarian School Dog

Ages 6-10

Students will role-play the key staff functions performed at a veterinary office and how to keep their “adopted” plush puppy healthy. These future veterinarians will explore digestion, the different parts of the canine eye, animal body language and how X-rays are used to diagnose and treat common illnesses.

Location: Main Street Recreation Center. (ks)

#/Link	Day	Date	Time	R/NR
134472	Th	4/10-5/15	5:30pm-6:30pm	\$156/\$187



Lisa Lombardi: Chillin’ with Slimy Villains

Ages 5-11

Celebrate a belated National Villain Day (April 29th) by creating villain slime. The Joker, Catwoman, Poison Ivy, Riddler, Penguin are all favorite villains. Participants will create a batch of slime to reflect their favorite while enjoying a villain-themed snack and socializing. Dressing up as a villain is optional and participants will take home their slime concoction. Location: Main Street Recreation Center. (ks)

#/Link	Day	Date	Time	R/NR
134613	M	5/19	4:30pm-5:30pm	\$35/\$42

Lisa Lombardi: The Way the Cookie Crumbles

Ages 5-11

Oreos, macaroons, chocolate chip, gingerbread, and fortune cookies - everyone loves a good cookie. Learn about the fascinating history of cookies and become an expert while sampling favorites and sharing opinions. Participants will be coached on the “3 Spheres of Control” in life by understanding what is within one’s control and learning about the saying, “That’s the way the cookie crumbles.” Location: Main Street Recreation Center. (ks)

#/Link	Day	Date	Time	R/NR
134614	M	5/19	5:30pm-6:30pm	\$35/\$42

Tween Night

Ages 8-12

Get out and have fun! Tweens will take over the gym and turf at Ackerman SFC for a night of sports, games, and other fun activities. We will have pizza and water for all participants. Adults must accompany their kids for check-in and check-out. Location: Ackerman SFC. (rb)

#/Link	Day	Date	Time	R/NR
134434	F	2/14	6pm-8pm	\$15/\$20

Nerf on the Turf

Ages 8-12

Bring your best Nerf skills to our Indoor Ackerman Turf and get in on thrill of blaster-filled competition. Participants will engage in tactical training, themed missions, obstacle course challenges, and help lead their team to victory during arena battles. Location: Ackerman SFC. (rb)

#/Link	Day	Date	Time	R/NR
134457	Th	5/15-5/29	4pm-5pm	\$40/\$50

Laser Tag Tournament

Ages 7-14

You bring your A-game, we'll bring the fun of laser tag to Ackerman Sports and Fitness Center. Dodge laser blasts, maneuver around obstacles, and strategize with teammates to lead your team to victory. Take advantage of a Nerf obstacle course to practice in-between rounds. Each team must have a minimum of two players and a maximum of six. First place winners will receive a commemorative medal. This is a double elimination tournament. All laser tag equipment is provided. Registration is completed on a team basis. The team captain should register your team. Location Ackerman SFC. (rb)

#/Link	Day	Date	Time	R/NR
134432	F	5/9	5pm-9pm	\$185

Kid's Night Out

Ages 5-12

Children will enjoy a night out with friends participating in games, sports drills, and arts and crafts, all while supervised by the Ackerman SFC team. Participants will receive a treat and water. Adults must accompany their children for check-in and check-out. If weather permits, this event may be held outdoors. Location Ackerman SFC. (rb)

#/Link	Day	Date	Time	R/NR
134435	F	5/16	6pm-8pm	\$15/\$20

Ackerman Flag Football Jr.

Ages 6-8

Learn the fundamentals of flag football in an encouraging environment. This camp prioritizes skill drills, teamwork, and relay races that will boost your child's confidence and love for the game. Every class session will end in a scrimmage where players can put their new skills to practice. All levels of experience and skill are welcome. No meeting on 11/28. Location: Ackerman SFC. (rb)

#/Link	Day	Date	Time	R/NR
134464	Th	3/13-3/27	5:30pm-6:30pm	\$45/\$55
134477	W	5/7-5/28	4:30pm-5:30pm	\$55/\$65





Peak Performance Training

Ages 8-12

Transform your athletic skills with Peak Performance Training, designed specifically for youth and teen athletes. In these 50-minute sessions, you'll enhance your balance, coordination, speed, agility, and quickness (SAQ) through exciting drills and expert coaching. Whether your goal is to sprint faster, react quicker, or outmaneuver your competition, this program will equip you with the essential tools to dominate your sport. Don't miss this chance to gain a competitive edge and unleash your full potential! Location: Ackerman SFC. (rb)

#/Link	Day	Date	Time	R/NR
134236	M	3/31-5/5	4pm-4:50pm	\$140/\$175
134237	W	4/2-5/7	4pm-4:50pm	\$140/\$175



Youth Yoga

Ages 10-17

We are excited to offer this program catered to the youth of our community in a fun and educating environment. The class focuses on breathing techniques and beginning yoga postures to teach a safe, effective, and graceful style to strengthen and balance the body and mind. Stress relief relaxation is offered at the end of class. Location: Ackerman SFC. (sg)

#/Link	Day	Date	Time	R/NR
134339	W	4/2-4/23	4pm-4:50pm	\$100/\$150

Bikes, Bands and Burn

Ages 13-17

Get ready to ride, power up, and feel the burn with Bikes, Bands and Burn, the ultimate class for teens ages 13-17! This high-energy, 6-week program combines intense cycling intervals with strength-building resistance band exercises for a total-body workout that boosts endurance, builds lean muscle, and increases overall fitness. You'll pedal through heart-pumping cycling sessions, then switch to resistance bands to target every major muscle group, combining cardio and strength training for maximum results. Whether you're looking to enhance your athletic performance or just get stronger and fitter, Bikes, Bands and Burn will challenge you, keep you engaged, and help you burn through your limits. Let's ride and get results! Location: Ackerman SFC. (sg)

#/Link	Day	Date	Time	R/NR
134340	Th	4/3-5/8	4pm-5pm	\$90/\$135



adult interest

who to contact:

(aa) Anastasia Aubie, aaubie@gepark.org

(sg) Sean Gallagher, sgallagher@gepark.org



BYOB Mothers & Meditation

Ages 21 and up

Start your Mother's Day weekend with some zen and wine! Perfect for a mother/daughter outing or the kick off to a girlfriends brunch, bring your beverage of choice to enjoy during a peaceful morning of yoga led by Ackerman SFC instructors. Participants will receive a goody bag and a raffle ticket for a chance to win products from local businesses. Location: Lake Ellyn Boathouse. (sg)

#/Link	Day	Date	Time	R/NR
134238	Sa	5/10	9am-11am	\$25/\$35

Adult Beginner Tap

Ages 18 and up

Tap dance is an American art form that is not only entertaining to watch (and hear), but it's also fun and easy to learn. Tap teaches rhythm, improves balance, and provides a great workout. This class includes warm-ups, basic steps, and traveling combinations. Tap shoes are required and available for purchase through the Park District. For questions regarding shoe purchase, email cacoordinator@gepark.org. Location: Spring Avenue Recreation Center. (aa)

#/Link	Day	Date	Time	R/NR
134605	Tu	4/22-5/20	7:20pm-8:20pm	\$86/\$102

Adult Beginner Ballet

Ages 18 and up

A perfect class for those getting started or revisiting ballet again as an adult. This class will focus on alignment, the foundation of technique, and movement quality. Location: Spring Avenue Recreation Center. (aa)

#/Link	Day	Date	Time	R/NR
134610	Th	4/24-5/22	6:50pm-7:50pm	\$86/\$102

Dancin' Feet: West Coast Swing

Ages 18 and up

West Coast Swing (WCS) is a popular form of swing dancing that has spread across the world. Although its history and roots come from Lindy Hop, part of the appeal of WCS is that it is an adaptable dance; it can be danced to a variety of musical styles and genres. In addition, the dance itself creates room for improvisation and interaction between the partners like a conversation. Location: Spring Avenue Recreation Center. (aa)

#/Link	Day	Date	Time	R/NR
134322	W	4/9-5/14	7pm-8pm	\$70/\$80

Dancin' Feet: Ballroom Dance

Ages 18 and up

Learn the basics of Waltz and Foxtrot. Register with your favorite partner or individually, for this enjoyable, fun and energy-packed dance session. You'll be ready to hit the dance floor in no time. Location: Spring Avenue Recreation Center. (aa)

#/Link	Day	Date	Time	R/NR
134324	Th	4/10-5/15	7:30pm-8:30pm	\$70/\$80

Dancin' Feet: Swing Dance

Ages 18 and up

Swing dance, known also as Jitterbug and East Coast Swing, is a popular and versatile dance. This class will teach you how to dance swing with ease and confidence. Basic lead and follow techniques will be covered, in addition to many popular patterns. The class is open to couples as well as singles. Location: Spring Avenue Recreation Center. (aa)

#/Link	Day	Date	Time	R/NR
134323	Th	4/10-5/15	6:30pm-7:30pm	\$70/\$80

Adult Ballroom: East Coast Swing

Ages 18 and up

East Coast Swing is a happy, upbeat dance distinguished by its bouncing, swinging motion and variety of turns and spins. Learn this fun dance that originated from Lindy Hop with award-winning instructor Gesi Vance. This class will teach basic patterns and mini dance combos that can be taken to any event. Come with a partner or as an individual and have a blast learning a new skill. Location: Spring Avenue Recreation Center. (aa)

#/Link	Day	Date	Time	R/NR
134316	M	4/7-5/12	7:30pm-8:25pm	\$91/\$109

Adult Ballroom: West Coast Swing

Ages 18 and up

West Coast Swing is a smooth, stylish dance distinguished by its elastic look and improvisational movements. Learn the dance that originated from Lindy Hop with award-winning instructor Gesi Vance. This class will teach basic patterns and mini dance combos that can be taken to any event. Come with a partner or as an individual and have a blast learning a new skill. Location: Spring Avenue Recreation Center. (aa)

#/Link	Day	Date	Time	R/NR
134317	M	5/19-6/23	7:30pm-8:25pm	\$91/\$109





active older adults

who to contact:

- (aa) Anastasia Aubie, aaubie@gepark.org
- (rb) Rebecca Brush, rbrush@gepark.org



MSRC Senior Clubs

MSRC Senior Club offerings for all those over the age of 60.

Club meetups take place at the Main Street Recreation Center, 501 Hill Avenue. (aa)

American Mah-Jongg Club *Free!*

Join the American Mah-Jongg Club every Friday between 10am and 1pm to play this tile-based game. It's best to have a basic understanding of the game before joining.

Bound to Read (BTR) Book Club *Free!*

Are you an avid reader who loves discussing books? Join our monthly book club, which meets on the 3rd Monday of each month from 10am-11am. Snacks are provided. Get books from the Glen Ellyn Public Library.

- **February 17:** "North Woods" by Daniel Mason
- **March 17:** "True Biz" by Sara Novic
- **April 21:** "The Women" by Kristin Hannah
- **May 19:** "James" by Percival Everett

Poker Plus Club *Free!*

Join us for poker and other favorite games on the 1st and 3rd Tuesday of each month from September through May, between 2pm-4pm. All experience levels are welcome. Card decks, games, and chips are provided.

Trivia and Social Club *Free!*

Our trivia and social club meet on the 3rd Thursday of every month at 11am-12pm. Join us to play a game, learn something new, and test your knowledge with themed trivia. Snacks and treats are served.

- **February: 20:** Bank Holidays Trivia
- **March 20:** Memorable Movie Trivia
- **April 17:** Art and Artists Trivia
- **May 15:** Mysteries of the World Trivia



The Gazette

Subscribe to receive The Gazette, a newsletter for seniors and active older adults, to your home! This FREE printed newsletter is mailed out quarterly to subscribers ages 60 and older. Please be sure to include your email address if you would also like to receive each edition via email. Questions? Please contact Anastasia Aubie at aaubie@gepark.org.



Friday Night Senior Bingo

Ages 55 and up

Let's get together for bingo! Join us on the first Friday of every month from 6pm-8pm at Ackerman Sports and Fitness Center for Senior Bingo. Play several rounds of bingo for a chance to win gift cards, candy, home décor, and a grand prize for the final game. No registration required. \$1 per card. (rb)

Donuts and Bingo *Free!*

Ages 55 and up

Enjoy bingo, coffee, and donuts at Main Street Recreation Center on the 2nd Thursday of each month. Games are from 10:30am-11:30am. One bingo card per participant. Coffee, donuts, and bingo cards are provided, and prizes will be awarded to the winners. This free drop-in program is offered in partnership with Glen Ellyn Public Library. (aa)

Hop into Spring Luncheon

Ages 55 and up

Celebrate springtime with a luncheon featuring a delicious meal and seasonal decorations. After dining, join in fun Easter-themed games and activities for all ages. It's the perfect way to enjoy good food, laughter, and togetherness! Location: Main Street Recreation Center. (aa)

#/Link	Day	Date	Time	R/NR
134431	W	4/16	11:45am-2:15pm	\$10/\$12

Ageless Grace *Free!*

Ages 50 and up

Improve cognitive and physical health functions in this free drop-in program every Tuesday at 10am-10:45am located at Main Street Recreation. The class focuses on activating all five functions of the brain: strategic planning, memory/recall, analytical thinking, creativity, and kinesthetic learning. For more information, please call (630) 858-2463.

AARP Tax-Aide *Free with appointment!*

Ages 55 and up

Free tax assistance for local seniors will be available on Mondays from AARP Tax-Aide volunteers. The volunteers are trained and certified through an Internal Revenue Service program. Be sure to bring all your tax information from the prior tax filing year and all your tax documents for the current tax filing year to your appointment. You will need to pick up a mandatory packet of information at least one week prior to your appointment in person at Main Street Recreation Center (packets cannot be mailed). On the day of your appointment you will meet with your tax assistant for an introduction at your appointment time. After your introduction, you are allowed to leave and pick up your completed taxes at your designated return time. Appointments are required by calling (630) 858-2463 starting January 6, 2025. Location: Main Street Recreation Center. (aa)

Day	Date	Appointment Time
M	2/3-4/7	8:30am through 10:30am

day trips

Strike it Lucky on the River: Grand Victoria Casino

Ages 21 and up

Join us for a thrilling day at the Grand Victoria Casino! This exciting day trip offers seniors the perfect getaway to experience gaming, entertainment, and good company. We'll head to the riverfront casino in Elgin, where you'll have the opportunity to try your luck with slot machines, table games, and more. Please note that the trip fee includes transportation only. Any gambling or food purchases are on your own. Be sure to bring a valid driver's license (not expired) or state ID with you on the day of the trip. Departs from Main Street Recreation Center. (aa)

Register by March 10

#/Link	Day	Date	Time	R/NR
134441	W	3/19	9am-3pm	\$20/\$25

Churches & Chocolates in Milwaukee

Ages 21 and up

Milwaukee, Wisconsin is known for a lot of things but one thing you might not have known about this city is that it's home to 554 churches at last count in summer 2024! On this unique tour, we'll visit three of them for 30-minute docent-led tours. We'll also enjoy a generously portioned, sit-down lunch and we'll visit a local chocolatier to learn more about their craft; receive in-store samples to enjoy along with take-home treats and shopping time. There will be minimal walking on this trip however, participants will need to be able to enter/exit the bus multiple times during the day and stand for periods of time. Fee includes transportation, step on guide, tours and donations at each church, lunch and gratuity, and samples and take-home treats at the chocolatier. Additional purchases are on your own. Departs from Main Street Recreation Center. (aa)

Register by March 28

#/Link	Day	Date	Time	R/NR
134443	Tu	4/15	8:30am-6pm	\$159/\$164





Cats the Musical at Paramount Theatre

Ages 18 and up

Paramount’s creative team is re-envisioning this classic and bringing a new layer of energy to this clandestine world of the felines. You may know all the words, but you’ll have never seen this Cats before! The latest production explores timeless themes of identity and redemption, while keeping the unforgettable music. More than 40 years since its release on Broadway, Cats will enchant you all over again with its imaginative storytelling and groundbreaking theatrical flair. Departs from Main Street Recreation Center. (aa)

Register by April 14

#/Link	Day	Date	Time	R/NR
134433	W	5/7	12:30pm-5pm	\$59/\$64



Hiking, History & Lunch at Little Red Schoolhouse

Ages 18 and up

Explore the historic Little Red Schoolhouse Nature Center in Willow Springs, where you’ll enjoy scenic trails through woodlands and prairies, spotting native wildlife along the way. After hiking, relax and we’ll head out for a delicious lunch at local eatery nearby. It’s a perfect blend of outdoor adventure and peaceful retreat in nature. Fee includes transportation, hiking experience and lunch. Departs from Main Street Recreation Center. (aa)

Register by May 1

#/Link	Day	Date	Time	R/NR
134430	Tu	5/13	8:30am-3pm	\$72/\$79

Architecture Boat Tour & Lunch

Ages 21 and up

Enjoy a relaxing boat tour along the Chicago River, where you’ll learn about the city’s famous architecture and stunning skyline. A knowledgeable guide will share stories behind Chicago’s iconic buildings, from classic landmarks to modern towers. After the tour, savor a tasty lunch at a nearby restaurant. It’s a great way to see the city and enjoy a day out! Departs from Main Street Recreation Center. (aa)

#/Link	Day	Date	Time	R/NR
134447	W	5/21	9am-4pm	\$80/\$100



nature

Seeding Change

Ages 18 and up

Seeds are the key to resilient food gardening. Learn about the challenges of our fragile food system and how we can use our gardens to overcome some of those issues. Discover how to grow plants, not only for food, but for seeds as well. Participants will learn tips and tricks on how to produce healthy seed that's adapted to the specific growing conditions of your garden. Attendees will be provided a variety of seeds to select for their gardens, as well as reference materials to help them begin their seed-saving journey. When you become a seed steward, you may never need to buy seeds again! Location: Dr. Frank Johnson Center. (cg)

#/Link	Day	Date	Time	R/NR
134691	W	2/26	6:30pm-7:30pm	\$10/\$12

Little Boathouse: Maple Sugaring Session

Ages 5-12

Inspired by the beloved "Little House on the Prairie" book series, this after-school program offers a three-week adventure filled with heritage skills. In this session, topics will center around maple sugaring. We will identify and tap maple trees, learn how to build and start a fire, make pancakes, and sample maple syrup. Participants will also create pioneer toys and explore the natural world just as the early settlers did. Location: Lake Ellyn Boathouse. (lb)

#/Link	Day	Date	Time	R/NR
134277	M	3/3-3/17	3:45pm-5pm	\$45/\$54

SPRING 2025 • 50

Registration for orange code numbers is open now | Registration for blue code numbers begins at 8am on February 1

Birding Beyond

Ages 18 and up

Experience bird-watching beyond Glen Ellyn. Join our Natural Areas staff as we take the Park District bus to a regional hotspot for viewing winter waterfowl. During this time of year, there are more than Mallards and Canada Geese swimming in area lakes. See exotic plumage and maybe even some spectacular courting displays. You'll never look at ducks the same way again. Participants are encouraged to bring their own binoculars. A limited number of optics will be available for loan. Dress for weather conditions, especially wind. This program will be canceled in the event of rain or hazardous travel conditions. Location: Dr. Frank Johnson Center. (cg)

#/Link	Day	Date	Time	R/NR
134666	Th	3/27	8:30am-11am	\$15/\$18

Nature Maker Art: Watercolor Journals

Ages 6-14

Unleash your creativity with Nature Maker Art sessions led by Liita Forsyth – an artist, naturalist, and teacher from The Little Bits Workshop. Experience the wonders of nature firsthand at Lake Ellyn, and then delve into art classes inside the Boathouse. During the spring session, we will make a handbound journal. We will use various watercolor techniques to sketch and paint the wildflowers that are emerging each week, the birds that are migrating, and other beauties of the natural world. Location: Lake Ellyn Boathouse. (lb)

#/Link	Day	Date	Time	R/NR
134279	M	4/14-5/5	3:45pm-5pm	\$65/\$78

The Secret Garden

Ages 5-12

Enjoy classic illustrations of The Secret Garden while walking to Benjamin Gault Wildlife and Bird Sanctuary: a hidden ravine full of wildflowers. Make friends with a robin, find a key, skip rope, and devour currant buns in the garden. Location: Lake Ellyn Park. (lb)

#/Link	Day	Date	Time	R/NR
134278	Tu	4/15	2pm-3:30pm	\$15/\$18

All About Eggs Hunt

Ages 5-12

It isn't just chickens that lay eggs. Make a tiny basket and walk a trail, hunting for plastic eggs filled with clues. Play a matching game to discover which wild animals in Glen Ellyn natural areas hatch from eggs. Location: Churchill Park. (lb)

#/Link	Day	Date	Time	R/NR
134280	F	4/18	2pm-3:30pm	\$15/\$18

DuPage River Sweep: Lake Ellyn Clean-Up

All ages

Please join us as we continue our tradition of helping facilitate the annual DuPage River Sweep. Our efforts this year will focus on Lake Ellyn, whose waters enter the river system. Lend a hand and help remove trash from the shoreline and throughout the park. If you have rubber boots or hip waders, please bring them. We will provide buckets, gloves, garbage bags, and a limited number of garbage pickers. Registration through The Conservation Foundation is required at theconservationfoundation.org/sweep.

Presented by Glen Ellyn Park District and The Conservation Foundation. Children must be accompanied by a registered adult. Location: Lake Ellyn Park. (lb)

Day	Date	Time	R/NR
Sa	4/19	9am-12pm	Free w/registration



Earth Week: Wildflower Watercolor

Ages 18 and up

Celebrate the Earth through art. Take a walk to admire and sketch the spring wildflowers in a restored oak woodland, returning to the Lake Ellyn Boathouse to watercolor. Liita Forsyth of The Little Bits Workshop will instruct and encourage. In addition, all necessary supplies, including paints and brushes, will be provided to finish your art piece. Location: Lake Ellyn Park. (1b)

#/Link	Day	Date	Time	R/NR
134281	M	4/21	1pm-3pm	\$24/\$30

Earth Week: Library Storytime

Ages 5 and under

Honor Earth Day with the Glen Ellyn Park District and Glen Ellyn Public Library at a storytime in the park. Listen to books and participate in activities that celebrate caring for our Earth. Rain Location: Glen Ellyn Public Library. Children should be accompanied by an adult. Location: Maryknoll Park. (1b)

#/Link	Day	Date	Time	R/NR
134282	Tu	4/22	10:30am-11am	Free w/registration

Earth Week: Candyland Trail Game

Ages 5-12

For this program we are turning Churchill Park into a life-sized "Candyland," game. Draw cards to travel the trail, visiting different realms. Learn how to take care of the Earth as you go. Which team will finish the game first? Celebrate your success with a cup of "dirt and worms," (chocolate pudding, oreos, and gummy worms). Location: Churchill Park. (1b)

#/Link	Day	Date	Time	R/NR
134283	W	4/23	3:45pm-5pm	\$15/\$18

Earth Week: Breakfast with the Birds

All ages

Many birds are resting and refueling on their journeys north to their breeding grounds. Join us as we celebrate them with donuts and coffee or hot chocolate. See how many birds you can identify on a walk through the park. Participants will receive a bird passport to check off. Each passport can be entered in a drawing to win a gift basket. The fee is per person, and children must be accompanied by a registered adult. Location: Churchill Park. (1b)

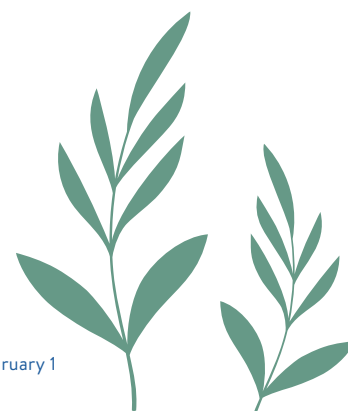
#/Link	Day	Date	Time	R/NR
134284	Sa	4/26	9am-10:30am	\$5/\$7

Earth Week: Forest Bathing Wellness Walk

Ages 18 and up

Reconnect to the Earth through forest bathing. This wellness practice creates healing and rest for body and mind. Retta Hennessy, a certified nature and forest therapy guide, will provide gentle invitations that awaken the senses, encourage mindfulness, and connect you with the natural world. A tea ceremony (made with foraged herbs) concludes each experience, leaving participants replenished and revitalized. Location: Churchill Park. (1b)

#/Link	Day	Date	Time	R/NR
134285	Su	4/27	1pm-3pm	\$20/\$24



Native Landscaping for Birds

Ages 18 and up

Turn your yard into a sanctuary for birds by incorporating native plants. Learn how making small changes on your property can attract resident and migrating birds. You'll come away with a simple plan that you can expand to fit your space. Start right away by shopping a native plant sale on site (for participants only). Location: Dr. Frank Johnson Center. (cg)

#/Link	Day	Date	Time	R/NR
134674	Th	5/8	7pm-8pm	\$10/\$12

Morning at the Museum

Ages 5-12

Travel by Park District bus to the enchanting Jurica-Suchy Nature Museum at Benedictine University. This small museum displays many of the biological specimens collected for teaching purposes during the twentieth century by two faculty members, the brothers Hilary and Edmond Jurica. The outing includes a guided tour of the museum, hands-on learning circle, and museum scavenger hunt. Location: Main Street Recreation Center. (lb)

#/Link	Day	Date	Time	R/NR
134286	F	5/9	9am-12pm	\$30/\$36

Family Wildflower Walk

All ages

Many spring wildflowers bloom before the trees leaf out and are gone shortly afterwards. Take a walk to admire these ephemeral beauties and learn the adaptations that allow them to thrive. Return home with a field guide to use on future outings. Children must be accompanied by a registered adult. Location: Lake Ellyn Park. (lb)

#/Link	Day	Date	Time	R/NR
134287	Sa	5/10	11am-12pm	\$5/\$7

Nature Play Afternoons

Ages 5-12

Every child should have mudpies, grasshoppers, water bugs, tadpoles, frogs, mud turtles, elderberries, wild strawberries, acorns, chestnuts, trees to climb, animals to pet, hay fields, pinecones, rocks to roll, sand snacks, huckleberries, and hornets. Any child who has been deprived of these, has been deprived of the best part of their education - Luther Burbank. This three-week series will provide much of what Burbank lists above with supervised child-directed play in a natural area. Participants will develop motor skills, social skills, and imagination, in addition to learning first-hand about the natural world. Bring a water bottle and dress appropriately for the weather. No class on 5/26. Location: Churchill Park. (lb)

#/Link	Day	Date	Time	R/NR
134288	M	5/12-6/2	3:45pm-5pm	\$30/\$36



Nature Photography

Ages 10-18

Bring your digital camera, phone, or tablet to explore the natural world through a lens. Karly Tearney, proprietor of Karly Tearney Photography, will provide instruction on planning, technical skills, and artistic expression. Enhance your photography skills while capturing and editing compelling images of landscapes, plants, or wildlife. Select your best photo to be printed out. Location: Lake Ellyn Park. (lb)

#/Link	Day	Date	Time	R/NR
134395	W	5/14	6pm-7:30pm	\$20/\$24

Rhythm Workshop

Ages 5-12

Make music together by repurposing unwanted shrubs removed from Park District natural areas. In this workshop, we will cut and shape two sets of claves, short wooden sticks used as percussion instruments. We will use different types of wood and compare the sound of each. After the claves are complete, we will practice a variety of rhythms and songs together. Location: Churchill Park. (lb)

#/Link	Day	Date	Time	R/NR
134289	W	5/28	4pm-5:30pm	\$15/\$18

Preschool Nature Outings:

Ages 2-5

Engage your little ones in the wonders of nature this spring. Each class will focus on a different topic, accompanied by a captivating story, a craft or project, and an exploratory hike tailored to their abilities. Join us for these enriching outings that encourage a love for the natural world. (lb)

Skunks at Maryknoll Park

#/Link	Day	Date	Time	R/NR
134258	F	3/14	10am-11am	\$10/\$12

Rain at Lake Ellyn Boathouse

#/Link	Day	Date	Time	R/NR
134259	F	3/28	10am-11am	\$10/\$12

Bunnies and Rabbits at Churchill Park

#/Link	Day	Date	Time	R/NR
134260	F	4/11	10am-11am	\$10/\$12

Arbor Day at Ackerman Woods

#/Link	Day	Date	Time	R/NR
134261	F	4/25	10am-11am	\$10/\$12

Mud at Lake Foxcroft Park

#/Link	Day	Date	Time	R/NR
134262	F	5/2	10am-11am	\$10/\$12

Pollinators at Churchill Park

#/Link	Day	Date	Time	R/NR
134263	F	5/23	10am-11am	\$10/\$12



Restoration Workday

Ages 8 and up

Make a positive impact on the environment. Activities include clearing invasive plants, cutting and stacking brush, planting native flowers, trees, and seeds, and maintaining trails, among other tasks. Please bring your own work gloves and a water bottle. If you have any questions, contact Laurie Bellmar at lbellmar@gepark.org. (lb)

Churchill Park

#/Link	Day	Date	Time	R/NR
134267	Sa	3/15	9am-11am	Free w/registration

Ackerman Woods

#/Link	Day	Date	Time	R/NR
134268	Sa	5/17	9am-11am	Free w/registration

Nature Walking Club

Ages 18 and up

Join fellow nature enthusiasts for leisurely walks as we explore our natural heritage on local trails. These relaxed outings offer a wonderful opportunity to appreciate the natural treasures that surround us and to learn about the seasonal changes taking place. Held rain or shine, these walks will leave you feeling inspired by the beauty of nature and its ever-changing wonders. (lb)

Ackerman Woods Loops

#/Link	Day	Date	Time	R/NR
134264	F	3/21	9am-10:30am	Free w/registration

Lake Ellyn and Benjamin Gault

#/Link	Day	Date	Time	R/NR
134265	F	4/18	9am-10:30am	Free w/registration

Churchill Park

#/Link	Day	Date	Time	R/NR
134266	F	5/16	9am-10:30am	Free w/registration

Migration Mornings

Ages 18 and up

Join us as we experience the wonder and awe of the spring bird migration. Whether you are new to birding or have years of experience, you are welcome to practice your observation and identification skills with us. Thousands of birds pass through our area on their journey north. Take a casual walk with us to catch a glimpse of these beautiful birds and learn why they are so amazing. Binoculars will be available for loan. (cg)

Churchill Park

#/Link	Day	Date	Time	R/NR
134269	Th	4/10	8:30am-10am	Free w/registration
134272	Th	5/1	8:30am-10am	Free w/registration
134275	Th	5/22	8:30am-10am	Free w/registration

Ackerman Woods

#/Link	Day	Date	Time	R/NR
134270	Th	4/17	8:30am-10am	Free w/registration
134273	Th	5/8	8:30am-10am	Free w/registration
134276	Th	5/29	8:30am-10am	Free w/registration

Manor Park

#/Link	Day	Date	Time	R/NR
134271	Th	4/24	8:30am-10am	Free w/registration
134274	Th	5/15	8:30am-10am	Free w/registration





gymnastics

Proper attire is mandatory for all gymnastics participants. Please no hooded sweatshirts. Options for girls include gymnastics leotards, shorts, and t-shirts. Boys are welcome to wear shorts or sweatpants with a t-shirt. Please refrain from wearing tights or jewelry. All participants should perform activities with bare feet. Hair must be pulled back and away from face prior to the start of class.

Our instructors have the discretion to transfer participants to a different class if they determine that they are not yet developmentally ready for their current class. New registrations will not be accepted after the second week of class. If you have any questions, contact Nicki Tazelaar at ntazelaar@gepark.org.

Gymnastics: Adult/Tot

Ages 1½ to 2

This fun-filled adult/tot program introduces your child to the exciting world of tumbling and gymnastics. Adult/Tot features tumbling and gymnastics equipment, balls, hoops, circles, and parachute play. Active adult participation is required. Please no siblings. No class on 5/24 or 5/26.

Location: Ackerman SFC. (bt)

#/Link	Day	Date	Time	R/NR
134478	M	4/7-4/28	9:15am-9:45am	\$84/\$126
134480	M	4/7-4/28	10am-10:30am	\$84/\$126
134482	Tu	4/8-4/29	9:15am-9:45am	\$84/\$126
134484	Tu	4/8-4/29	10am-10:30am	\$84/\$126
134486	W	4/9-4/30	9:15am-9:45am	\$84/\$126
134488	W	4/9-4/30	10am-10:30am	\$84/\$126
134490	Th	4/10-5/1	9:15am-9:45am	\$84/\$126
134492	Th	4/10-5/1	10am-10:30am	\$84/\$126
134494	Sa	4/12-4/26	7:30am-8am	\$63/\$95
134496	Sa	4/12-4/26	8:15am-8:45am	\$63/\$95
134498	Sa	4/12-4/26	9am-9:30am	\$63/\$95
134500	Sa	4/12-4/26	9:45am-10:15am	\$63/\$95
134495	Sa	5/3-5/31	7:30am-8am	\$84/\$126
134497	Sa	5/3-5/31	8:15am-8:45am	\$84/\$126
134499	Sa	5/3-5/31	9am-9:30am	\$84/\$126
134501	Sa	5/3-5/31	9:45am-10:15am	\$84/\$126
134479	M	5/5-5/19	9:15am-9:45am	\$84/\$126
134481	M	5/5-5/19	10am-10:30am	\$84/\$126
134483	Tu	5/6-5/27	9:15am-9:45am	\$84/\$126
134485	Tu	5/6-5/27	10am-10:30am	\$84/\$126
134487	W	5/7-5/28	9:15am-9:45am	\$84/\$126
134489	W	5/7-5/28	10am-10:30am	\$84/\$126
134491	Th	5/8-5/29	9:15am-9:45am	\$84/\$126
134493	Th	5/8-5/29	10am-10:30am	\$84/\$126

Gymnastics: Tiny Tumblers

Age 3

This introductory gymnastics class helps develop gross motor skills and body awareness and teaches self-confidence while having fun. A variety of gymnastic and tumbling stations will be set up each week to introduce your gymnast to the basic skills used in this sport. Children must be able to attend without an adult present. No class on 5/24 or 5/26.

Location: Ackerman SFC. (bt)

#/Link	Day	Date	Time	R/NR
134502	M	4/7-4/28	9:15am-9:45am	\$84/\$126
134504	M	4/7-4/28	10am-10:30am	\$84/\$126
134506	M	4/7-4/28	4pm-4:30pm	\$84/\$126
134508	Tu	4/8-4/29	9:15am-9:45am	\$84/\$126
134510	Tu	4/8-4/29	11am-11:30am	\$84/\$126
134512	W	4/9-4/30	9:15am-9:45am	\$84/\$126
134514	W	4/9-4/30	11am-11:30am	\$84/\$126
134516	W	4/9-4/30	4pm-4:30pm	\$84/\$126
134518	Th	4/10-5/1	9:15am-9:45am	\$84/\$126
134521	Th	4/10-5/1	11am-11:30am	\$84/\$126
134525	Sa	4/12-4/26	8:15am-8:45am	\$63/\$95
134530	Sa	4/12-4/26	9am-9:30am	\$63/\$95
134534	Sa	4/12-4/26	9:45am-10:15am	\$63/\$95
134526	Sa	5/3-5/31	8:15am-8:45am	\$84/\$126
134532	Sa	5/3-5/31	9am-9:30am	\$84/\$126
134536	Sa	5/3-5/31	9:45am-10:15am	\$84/\$126
134503	M	5/5-5/19	9:15am-9:45am	\$63/\$95
134505	M	5/5-5/19	10am-10:30am	\$63/\$95
134507	M	5/5-5/19	4pm-4:30pm	\$63/\$95
134509	Tu	5/6-5/27	9:15am-9:45am	\$84/\$126
134511	Tu	5/6-5/27	11am-11:30am	\$84/\$126
134513	W	5/7-5/28	9:15am-9:45am	\$84/\$126
134515	W	5/7-5/28	11am-11:30am	\$84/\$126
134517	W	5/7-5/28	4pm-4:30pm	\$84/\$126
134520	Th	5/8-5/29	9:15am-9:45am	\$84/\$126
134522	Th	5/8-5/29	11am-11:30am	\$84/\$126



Gymnastics: Preschool

Ages 4-5

A variety of gymnastics and tumbling stations will be set up each week to introduce your gymnast to the basic skills used in this sport. Children must be able to attend class without an adult present. No class on 5/24 or 5/26. Location: Ackerman SFC. (bt)

#/Link	Day	Date	Time	R/NR
134539	M	4/7-4/28	10:45am-11:30am	\$96/\$144
134541	Tu	4/8-4/29	10am-10:45am	\$96/\$144
134543	Tu	4/8-4/29	4pm-4:45pm	\$96/\$144
134545	W	4/9-4/30	10am-10:45am	\$96/\$144
134547	W	4/9-4/30	10:45am-11:30am	\$96/\$144
134549	W	4/9-4/30	4pm-4:45pm	\$96/\$144
134551	W	4/9-4/30	5pm-5:45pm	\$96/\$144
134553	W	4/9-4/30	6pm-6:45pm	\$96/\$144
134555	Th	4/10-5/1	10am-10:45am	\$96/\$144
134557	Th	4/10-5/1	10:45am-11:30am	\$96/\$144
134559	Sa	4/12-4/26	10:30am-11:15am	\$72/\$108
134560	Sa	5/3-5/31	10:30am-11:15am	\$96/\$144
134540	M	5/5-5/19	10:45am-11:30am	\$72/\$108
134542	Tu	5/6-5/27	10am-10:45am	\$96/\$144
134544	Tu	5/6-5/27	4pm-4:45pm	\$96/\$144
134546	W	5/7-5/28	10am-10:45am	\$96/\$144
134548	W	5/7-5/28	10:45am-11:30am	\$96/\$144
134550	W	5/7-5/28	4pm-4:45pm	\$96/\$144
134552	W	5/7-5/28	5pm-5:45pm	\$96/\$144
134554	W	5/7-5/28	6pm-6:45pm	\$96/\$144
134556	Th	5/8-5/29	10am-10:45am	\$96/\$144
134558	Th	5/8-5/29	10:45am-11:30am	\$96/\$144



Gymnastics: Preschool & Kindergarten

Ages 4-6

This class is designed to help refine and develop the gross motor skills taught in previous classes. A higher skill level of gymnastics stations will be set up each week to increase strength, flexibility, and coordination. No class on 5/24 or 5/26. Location: Ackerman SFC. (bt)

#/Link	Day	Date	Time	R/NR
134569	M	4/7-4/28	1:30pm-2:15pm	\$96/\$144
134571	Tu	4/8-4/29	2:15pm-3pm	\$96/\$144
134573	Sa	4/12-4/26	11:30pm-12:15am	\$72/\$108
134574	Sa	5/3-5/31	11:30pm-12:15am	\$96/\$144
134570	M	5/5-5/19	1:30pm-2:15pm	\$72/\$108
134572	Tu	5/6-5/27	2:15pm-3pm	\$96/\$144

Gymnastics: Kindergarten

Ages 5-6

This class is designed to help refine and develop the gross motor skills taught in previous classes. A higher skill level of gymnastics stations will be set up each week to increase strength, flexibility, and coordination. Must be enrolled in Kindergarten to participate. No class on 5/24 or 5/26. Location: Ackerman SFC. (bt)

#/Link	Day	Date	Time	R/NR
134561	M	4/7-4/28	4:45pm-5:30pm	\$96/\$144
134563	Tu	4/8-4/29	5pm-5:45pm	\$96/\$144
134565	W	4/9-4/30	6pm-6:45pm	\$96/\$144
134567	W	4/9-4/30	6pm-6:45pm	\$96/\$144
134562	M	5/5-5/19	4:45pm-5:30pm	\$72/\$108
134564	Tu	5/6-5/27	5pm-5:45pm	\$96/\$144
134566	W	5/7-5/28	6pm-6:45pm	\$96/\$144
134568	W	5/7-5/28	6pm-6:45pm	\$96/\$144

Gymnastics: Pre-Developmental

Ages 6-12

The focus of this program will be on floor exercise, springboard skills, bars, and beam. Stretching and conditioning for muscle tone will be included. Location: Ackerman SFC. (bt)

#/Link	Day	Date	Time	R/NR
134575	M	4/7-4/28	5:45pm-6:45pm	\$108/\$162
134577	Tu	4/8-4/29	4pm-5pm	\$108/\$162
134579	Th	4/10-5/1	4pm-5pm	\$108/\$162
134576	M	5/5-5/19	5:45pm-6:45pm	\$81/\$122
134578	Tu	5/6-5/27	4pm-5pm	\$108/\$162
134580	Th	5/8-5/29	4pm-5pm	\$108/\$162



Gymnastics: Developmental

Ages 8-13

This program is a continuation of Pre-Developmental Gymnastics. Participants must be able to perform roundoffs, cartwheels, forward/backward rolls, handstand, and a bridge in order to register. Location: Ackerman SFC. (bt)

#/Link	Day	Date	Time	R/NR
134581	Tu	4/8-4/29	5:15pm-6:15pm	\$108/\$162
134583	Th	4/10-5/1	5:15pm-6:15pm	\$108/\$162
134582	Tu	5/6-5/27	5:15pm-6:15pm	\$108/\$162
134584	Th	5/8-5/29	5:15pm-6:15pm	\$108/\$162

Gymnastics: Tumbling 1

Ages 7-13

No prior experience necessary. Start out learning the proper way to perform handstands, cartwheels, and more. Participants will build on their skills each session. Location: Ackerman SFC. (bt)

#/Link	Day	Date	Time	R/NR
134585	Th	4/10-5/1	4pm-4:45pm	\$96/\$144
134586	Th	5/8-5/29	4pm-4:45pm	\$96/\$144

Gymnastics: Tumbling 2

Ages 8-13

Participants must possess basic skills such as cartwheel, round-off, forward/backward rolls, handstand, and bridge. Location: Ackerman SFC. (bt)

#/Link	Day	Date	Time	R/NR
134587	Th	4/10-5/1	5:15pm-6:15pm	\$90/\$135
134588	Th	5/8-5/29	5:15pm-6:15pm	\$90/\$135

Gymnastics: Middle School

Ages 11-14

This program will focus on skill building on floor, beam, uneven bars, and vault. Location: Ackerman SFC. (bt)

#/Link	Day	Date	Time	R/NR
134589	Tu,Th	4/8-5/29	6pm-8pm	\$250

Gymnastics: Beginner Boys

Ages 6-12

This class will focus on learning skills on all 6 of the men's gymnastics apparatus. (ex: floor, pommel horse, rings, vault, parallel bars, and high bar) The coaches will teach the basics and fundamentals of each event. Class meets twice a week, Tuesday and Thursday at Glenbard West High School in the gymnastics gym and is taught by the Glenbard West boys' coaches. Location: Glenbard West. (bt)

#/Link	Day	Date	Time	R/NR
134590	Tu,Th	4/8-5/29	6pm-7:30pm	\$180

Gymnastics: Team Boys

Ages 6-15

Our boys team gymnastics program competes USAG, GIJO, and AAU. Coaches will teach the basics and fundamentals of each event and prepare the boys for competition on all 6 events. Floor, pommel horse, rings, vault, parallel bars and high bar. Team will meet 3 times a week at Glenbard West in the gymnastics gym and is taught by the Glenbard West boys gymnastics coach. Interested in competing? Schedule a trial with the coaches! Please contact Nicki Tazelaar at ntazelaar@gepark.org to schedule. No class on 5/26. Location: Glenbard West. (bt)

#/Link	Day	Date	Time	R/NR
134591	M-Tu,Th	4/7-5/29	5:30pm-8pm	\$409

Spring Avenue Dog Park

WHERE PETS COME TO PLAY.

Unleash some fun at this popular outdoor park where dogs can exercise, play, and socialize off-leash. Your four-legged friend will pawsitively love it.

Starting at

\$35

for residents

SPRING 2025 • 60

Registration for orange code numbers is open now | Registration for blue code numbers begins at 8am on February 1



dance academy

Please contact Anastasia Aubie at aubie@gepark.org with questions.

Adult/Tot Dance

Designed for our youngest dancers, this class introduces classic ballet, coordination, and gross motor skills through creative movement and interactive songs with a caregiver present. Ballet shoes are optional for adults/caregivers.

Tiny Tot

Your child will learn dance concepts and develop rhythm, coordination, and balance while moving and grooving to music and using creative props to inspire imagination. Adults are required to stay within the building for the duration of each class, no exceptions. Children must be able to attend class without an adult/caregiver present.

Creative Hip Hop

This class develops creativity and musicality with a special focus on rhythm, muscle memory, and coordination found in this urban dance style. Adults must stay within the building during each class; no exceptions. Children must be able to attend class without an adult/caregiver present.

Creative Movement

This class develops motor skills, balance, cognitive awareness, creativity, rhythm, musicality, and self-esteem. Adults are required to stay within the building for the duration of each class, no exceptions. Children must be able to attend class without an adult/caregiver present.

Pre-Tap/Ballet

Your child will learn core concepts from both tap and ballet. Both techniques will be taught in class at an age-appropriate level.

Pre-Ballet

Your child will be taught the core concepts of age-appropriate technique, and vocabulary of beginner ballet. This class serves as the foundation of ballet instruction within the Dance Academy.

Kinder Ballet/Tap

This class will build a solid foundation of ballet and tap terms and technique. Your child will learn to incorporate musicality into their movement and gain strength. We will focus on core ballet and tap concepts and build upon previous dance knowledge.

Ballet 1

This class will build a solid foundation of ballet terms and technique. Your child will learn to incorporate musicality into their movement and gain strength. We will focus on core ballet concepts and build upon previous dance knowledge.

Hip Hop 1

Your child will learn the basics of hip hop in this class. This high-energy style of dance encompasses many different urban dance styles and focuses on rhythm, muscle memory, and coordination. Gym shoes or sneakers are usually worn.

Instructional Classes Schedule

Instructional dance classes are offered seasonally. Participants in these programs do not participate in the annual spring dance recital. Download the Dance Academy Guide, which includes dance class dress codes, at gepark.org/dance. Location: Spring Avenue Recreation Center. (aa)

#/Link	Class	Age	Day	Date	Time	R/NR
134595	Adult/Tot Dance	1 ½-3	M	4/21-5/19	4:30pm-5pm	\$79/\$95
134596	Adult/Tot Dance	1 ½-3	W	4/23-5/21	9:15am-9:45am	\$79/\$95
134597	Adult/Tot Dance	1 ½-3	Th	4/24-5/22	9:15am-9:45am	\$79/\$95
134598	Tiny Tot	2 ½-3	M	4/21-5/19	5:05pm-5:35pm	\$79/\$95
134599	Tiny Tot	2 ½-3	W	4/23-5/21	9:50am-10:20am	\$79/\$95
134600	Tiny Tot	2 ½-3	Th	4/24-5/22	9:50am-10:20am	\$79/\$95
134601	Tiny Tot	2 ½-3	Sa	4/26-5/24	11:30am-12pm	\$79/\$95
134611	Creative Hip Hop	3-4	Sa	4/26-5/24	9am-9:45am	\$82/\$98
134602	Creative Movement	3-4	M	4/21-5/19	5:40pm-6:25pm	\$82/\$98
134603	Creative Movement	3-4	W	4/23-5/21	4:50pm-5:35pm	\$82/\$98
134606	Pre-Tap/Ballet	4-5	W	4/23-5/21	12:10pm-12:55pm	\$66/\$79
134608	Pre-Ballet	4-5	Th	4/24-5/22	4:20pm-5:05pm	\$82/\$98
134607	Kinder Ballet/Tap	5-6	W	4/23-5/21	4pm-4:45pm	\$82/\$98
134609	Ballet 1	5-6	Th	4/24-5/22	6pm-6:45pm	\$82/\$98
134604	Hip Hop 1	6-9	M	4/21-5/19	6:30pm-7:15pm	\$82/\$98

Dance Party Rentals

Ages 3-12

Host your next party in our Dance Room and Craft Lab with our wonderful dance instructors. Instructors are excited to create custom dance class parties for the little dancers in your life. Choose a 30-, 45-, or 60-minute time slot for the entertainment of your party and host the remainder of the party in our Craft Lab space. To schedule, contact Anastasia Aubie at aaubie@gepark.org. Location: Spring Avenue Recreation Center.

SPRING 2025 • 62

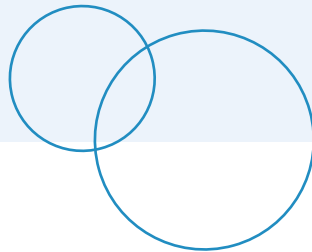
Registration for orange code numbers is open now | Registration for blue code numbers begins at 8am on February 1

Private Lessons

Private Tap Dance Lessons

Ages 7 through adult

Personalized tap lessons are available with dance instructor Marissa Banker. These 30-minute one-on-one lessons are tailored to meet your individual needs and goals. Lessons are scheduled privately based on room and instructor availability, priced at \$35/\$42 (R/NR) per lesson. To schedule, contact Marissa at cacoordinator@gepark.org. Location: Spring Avenue Recreation Center.



Private Ballroom Dance Lessons

Ages 7 through adult

Prepare for your wedding dance, enjoy a fun date night, get ready for a special event, or learn a fun new skill. Join award-winning Ballroom and Latin dance instructor, Gesi Vance, for private lessons tailored to any occasion and suitable for students of all skill levels. Lessons are scheduled privately based on room and instructor availability, priced at \$78/\$100 (R/NR) per lesson. To schedule, contact Marissa at cacoordinator@gepark.org. Location: Spring Avenue Recreation Center.

Thank you to our sponsors.

Their generous support
makes a world of difference.



Learn more about sponsorship opportunities at gepark.org/sponsorship or email ssmentek@gepark.org.



sports

who to contact:

- (aa) Anastasia Aubie, aaubie@gepark.org
- (cb) Clint Babicz, cbabicz@gepark.org
- (da) Darshan Addanki, daddanki@gepark.org
- (dt) Dan Tripp, dtripp@gepark.org
- (ks) Katy Speck, kspeck@gepark.org
- (rb) Rebecca Brush, rbrush@gepark.org

early childhood

All Star Sports: Adult/Tot Super Sports Jr.

Ages 2-3

Enhance your child's motor skills, including catching, throwing, batting, shooting, passing, and running, while improving hand-eye coordination. Adults actively participate alongside their child in soccer, basketball, hockey, T-Ball, and other exciting sports. Equipment will be provided for your convenience. Come and enjoy quality time together through the joy of sports. Location: Main Street Recreation Center. (ks)

#/Link	Day	Date	Time	R/NR
134379	W	4/9-5/21	9:15am-10am	\$91/\$109
134399	Sa	4/12-5/24	9:15am-10am	\$91/\$109

Adult/Tot Lakers Soccer

Ages 2-3

This class offers a fun and active bonding experience with your little one. This class offers a perfect blend of fun activities and soccer basics, allowing adults and tots to enjoy quality time together while learning fundamental soccer skills. Get ready to kick, laugh, and score great memories in this dynamic and inclusive class! Each participant receives a soccer ball. Location: Ackerman SFC. (da)

#/Link	Day	Date	Time	R/NR
134855	F	4/11-5/30	9:30am-10:15am	\$120/\$180

Ackerman Adult and Tot Sports

Ages 2-5

Adults play an integral part in helping their tots develop basic sports movement and motor skills. Motor skills activities focus on hand-eye and hand-foot coordination. Sports equipment and instruction are provided to help guide your child through an introduction to organized sports. Adult participation is required. No class on 4/12 or 5/10. Location: Ackerman SFC. (rb)

#/Link	Day	Date	Time	R/NR
134440	Sa	4/5-4/26	10am-10:45am	\$34/\$45
134442	Sa	5/3-5/31	10am-10:45am	\$34/\$45

All Star Sports: Basketball Jr.

Ages 3-4

Designed to teach the game of basketball at a basic level while making sure the players stay active and engaged. Fun, basketball-like games will be played to teach the importance of each skill. Trainers focus on basic mechanics to build confidence then add larger challenges as players progress. We will work on dribbling with each hand, passing and shooting technique, and understanding basic offense and defense. Location: Main Street Recreation Center. (ks)

#/Link	Age	Day	Date	Time	R/NR
134380	4-6	W	4/9-5/21	10am-11am	\$91/\$109
134381	3-4	W	4/9-5/21	11am-11:45am	\$91/\$109
134392	3-5	F	4/11-5/23	10am-10:45am	\$91/\$109
134389	4-5	Th	4/10-5/22	3pm-3:45pm	\$91/\$109

All Star Sports: Basketball Skills

Ages 5-7

Designed to teach the game of basketball at a basic level while ensuring active engagement of the players. Fun, basketball-like games are played to teach the importance of each skill. Trainers build confidence through mechanics and add challenges as players progress. Participants will work on dribbling with both hands, improving passing and shooting techniques, and developing an understanding of basic offense and defense strategies. Basketball Skills is the natural progression from the Junior program, allowing players to further enhance the foundational skills learned in Basketball Jr. Location: Main Street Recreation Center. (ks)

#/Link	Day	Date	Time	R/NR
134390	Th	4/10-5/22	3:45pm-4:45pm	\$91/\$109
134393	F	4/11-5/23	10:45am-11:45am	\$91/\$109

All Star Sports: Floor Hockey Skills

Ages 5-7

Master stick handling, puck control, passing, and shooting in floor hockey. Learn offensive and defensive strategies. Bring a bike helmet and gloves. Shin, knee, and elbow pads are optional. Floor Hockey Skills is the next level of Floor Hockey Jr. Location: Main Street Recreation Center. (ks)

#/Link	Day	Date	Time	R/NR
134391	Th	4/10-5/22	5pm-6pm	\$91/\$109

All Star Sports: Golf Jr

Ages 4-7

Players will participate in several fun drills and games that help them learn the complicated golf swing, rules, and proper etiquette. Equipment will be provided but feel free to bring your own. Golf skills is the next level of the Junior program and will build upon the basic skills learned in Golf Jr. Location: Main Street Recreation Center. (ks)

#/Link	Day	Date	Time	R/NR
134388	Th	4/10-5/22	11:45am-12:30pm	\$91/\$109

All Star Sports: Golf Skills

Ages 5-7

Golf Skills represents the next level of Golf Jr. Players will engage in enjoyable drills and games aimed at teaching the complex golf swing, rules, and proper etiquette of the age-old game of golf. Equipment will be provided, but feel free to bring your own. Location: Main Street Recreation Center. (ks)

#/Link	Day	Date	Time	R/NR
134382	W	4/9-5/21	3pm-3:45pm	\$91/\$108





All Star Sports: Soccer Jr.

Ages 3-6

There's no sitting and waiting in the action-packed game of soccer! The game is taught by hiding drills in fun games and using association techniques on the players' levels. Simple foot skills, dribbling, passing, shooting, basic rules and even work on spreading the field are covered. Kids also learn teamwork and sportsmanship. Equipment is provided. Location: Main Street Recreation Center. (ks)

#/Link	Age	Day	Date	Time	R/NR
134373	3-4	Tu	4/8-5/20	10am-10:45am	\$91/\$109
134384	3-4	W	4/9-5/21	4pm-4:45pm	\$91/\$109
134394	3-4	F	4/11-5/23	11:45am-12:30pm	\$91/\$109
134400	3-4	Sa	4/12-5/24	10am-10:45am	\$91/\$109
134374	4-6	Tu	4/8-5/20	10:45am-11:45am	\$91/\$109

All Star Sports: Soccer Skills

Ages 5-7

This class expands on Soccer Jr. as athletes develop their skills in the action-packed, team sport of soccer. Our approach incorporates hiding drills in fun games and using association techniques suitable for the athletes' levels. Athletes will learn simple foot skills, dribbling, passing, shooting, basic rules, and field spreading. All equipment is provided. Location: Main Street Recreation Center. (ks)

#/Link	Day	Date	Time	R/NR
134385	W	4/9-5/21	4:45pm-5:45pm	\$91/\$109
134401	Sa	4/12-5/24	10:45am-11:45am	\$91/\$109

Lakers Academy

Ages 5-8

The Lakers Academy Program provides players with a solid foundation in soccer, focusing on the fundamentals of the game in a fun and engaging environment. Our program emphasizes enjoying time with the ball, connecting with teammates, and mastering essential techniques to build confidence and skill on the field. This program is for children who love soccer, want to play at a higher level, and are interested in the Glen Ellyn Lakers Futbol Club. Participation in both the House Soccer League and Lakers Academy is encouraged. Training and small sided games will be run by our Future Pros travel soccer trainers. Each player is required to bring their own soccer ball, shoes, shin guards, and water for each class. Location: Ackerman SFC. (da)

#/Link	Day	Date	Time	R/NR
134859	Tu,Th	4/8-5/29	4:30pm-5:30pm	\$350

Little Lakers Soccer

Ages 4-6

Introduce your young athletes to the exciting world of soccer. Designed for kids ready to learn and have a blast, this class combines essential soccer skills with pure enjoyment. Watch your child kick off their soccer journey in a positive, energetic, and supportive environment! Each participant receives a soccer ball. Location: Ackerman SFC. (da)

#/Link	Day	Date	Time	R/NR
134857	F	4/11-5/30	10:30am-11:15am	\$120/\$180

All Star Sports: Super Sports

Ages 3-6

Kids will stay active, improve their balance, motor skills, and hand-eye coordination while learning the fundamentals of baseball, football, floor hockey, soccer, basketball, and more. Each class focuses on a new sport, where participants will learn basic rules, mechanics, and engage in fun games that keep everyone moving. All necessary equipment will be provided. Location: Main Street Recreation Center. (ks)

#/Link	Age	Day	Date	Time	R/NR
134375	3-4	Tu	4/8-5/20	12pm-12:45pm	\$91/\$109
134386	3-4	Th	4/10-5/22	10am-10:45am	\$91/\$109
134397	3-4	F	4/11-5/23	2:30pm-3:15pm	\$91/\$109
134402	3-4	Sa	4/12-5/24	11:45am-12:30pm	\$91/\$109
134387	4-6	Th	4/10-5/22	10:45am-11:45am	\$91/\$109
134396	4-6	F	4/11-5/23	1:30pm-2:30pm	\$91/\$109

All Star Sports: T-ball Jr.

Ages 3-6

T-Ball can be a boring game if taught incorrectly. This approach to baseball is one that engages players regardless of skill level. They learn basic building blocks in a fun, safe environment. Program keeps players moving and learning even while in the dugout! Mechanics and hand-eye coordination are the keys to early success. Players gain confidence as they learn the proper mechanics of catching, throwing, fielding, base running, and batting. Participants must bring their own glove. Location: Main Street Recreation Center. (ks)

#/Link	Day	Date	Time	R/NR
134376	Tu	4/8-5/20	3pm-3:45pm	\$91/\$109
134377	Tu	4/8-5/20	3:45pm-4:45pm	\$91/\$109
134398	F	4/11-5/23	3:15pm-4pm	\$91/\$109



All Star Sports: Baseball Skills

Ages 6-9

Kids learn the importance of proper throwing mechanics, rotational hitting, bunting, fielding, pitching, and catching. Speed and agility techniques are added to increase core strength and mobility for added bat speed, range in the field and linear speed for base running. In-game strategies are included to increase each player's overall knowledge. Participants must bring their own glove. Location: Main Street Recreation Center. (ks)

#/Link	Day	Date	Time	R/NR
134378	Tu	4/8-5/20	4:45pm-5:45pm	\$91/\$109

Ackerman Tot T-Ball

Ages 3-5

This class will introduce baseball fundamentals and game play including batting, catching, throwing, and base running. Participants will also learn the importance of good sportsmanship in a non-competitive, fun atmosphere. Adult participation is required. No class on 4/12 or 5/10. Location: Ackerman SFC. (rb)

#/Link	Day	Date	Time	R/NR
134445	Sa	4/5-4/26	9am-9:45am	\$34/\$45
134446	Sa	5/3-5/31	9am-9:45am	\$45/\$60

Ackerman Sports & Fun Day-Off School Camp

Ages 6-12

Keep your child active and having fun during their days off of school! Participants will play games and organized sports like dodgeball, Capture the Flag, kickball, and more. Ackerman SFC Camp Counselors will oversee all activities and make sure every participant finds a game, craft, or activity to enjoy. Location: Ackerman SFC. (rb)

#/Link	Day	Date	Time	R/NR
134523	Tu-F	4/1-4/4	9am-12pm	\$85/\$125
134524	Tu-F	4/1-4/4	12:30pm-3:30pm	\$85/\$125
134527	Tu	4/15	9am-12pm	\$35/\$40
134528	Tu	4/15	12:30pm-3:30pm	\$35/\$40
134529	F	4/18	9am-12pm	\$35/\$40
134531	F	4/18	12:30pm-3:30pm	\$35/\$40
134533	F	5/9	9am-12pm	\$35/\$40
134535	F	5/9	12:30pm-3:30pm	\$35/\$40
134537	M	5/26	9am-12pm	\$35/\$40
134538	M	5/26	12:30pm-3:30pm	\$35/\$40



Adult/Tot Hockey

Ages 3-5

Introduce the exciting sport of ice hockey to your tot. Adults and tots will be on the ice together, enjoying the fast-paced sport. Both must wear skates. This class teaches coordination, balance, and agility in a fun atmosphere. No class from 4/2-4/5 or 4/24-4/26. Location: Center Ice of DuPage. (aa)

#/Link	Day	Date	Time	R/NR
135460	Th	3/13-5/8	4:30pm-5pm	\$169
134348	Th	3/13-5/8	4:30pm-5pm	\$169
134360	Sa	3/15-5/10	9:10am-9:40am	\$169
134343	Sa	3/15-5/10	9:10am-9:40am	\$169
134349	Sa	3/15-5/10	10am-10:30am	\$169

Adult/Tot Ice Skating

Ages 3-5

Adults and tots are on the ice together. Both must wear skates. This class teaches ice coordination, balance, and agility in a fun atmosphere. No class from 4/2-4/5 or 4/24-4/26. Location: Center Ice of DuPage. (aa)

#/Link	Day	Date	Time	R/NR
134325	Th	3/13-5/8	4:30pm-5pm	\$169
134327	Sa	3/15-5/10	11am-11:40am	\$169
134326	Sa	3/15-5/10	10am-10:30am	\$169

Ice Skating Tot 1

Ages 3-5

This class teaches progressive levels 1 to 4 providing children with ice orientation, balance, agility, and fun. Skate rentals are available. No class from 4/2-4/5 or 4/24-4/26. Location: Center Ice of DuPage. (aa)

#/Link	Day	Date	Time	R/NR
134328	Th	3/13-5/18	4:30pm-5pm	\$159
134329	Sa	3/15-5/10	10am-10:30am	\$159
134330	Sa	3/15-5/10	11am-11:30am	\$159
134350	Th	5/22-6/26	4:30pm-5pm	\$159
134351	Sa	5/24-6/28	10am-10:30am	\$159

Little Hockey 1

Ages 3-5

For participants who have had no formal instruction. Kids will learn ice coordination, balance, and agility in a fun atmosphere while wearing hockey equipment. Hockey skates and helmet required, and hockey sticks are optional. No class from 4/2-4/5 or 4/24-4/26. Location: Center Ice of DuPage. (aa)

#/Link	Day	Date	Time	R/NR
134341	Th	3/13-5/18	4:30pm-5pm	\$159
134342	Sa	3/15-5/10	9:10am-9:40am	\$159
134358	Th	5/22-6/26	4:30pm-5pm	\$159
134359	Sa	5/24-6/28	9:10am-9:40am	\$159

youth & teen

basketball

Basketball Training with Big 3 Sports

Grades 2nd-8th

Big 3 Sports will help players work on fundamental basketball skills while building confidence. Participants need to bring their own basketball. All training sessions will be run by Big 3 Sports coaching staff, which includes standout high school, college, and former professional players.

Location: Ackerman SFC. (dt)

#/Link	Grade	Day	Date	Time	R/NR
134834	2nd/3rd	W	4/9-4/30	5pm-6pm	\$100/\$150
134837	2nd/3rd	W	5/7-5/28	5pm-6pm	\$100/\$150
134835	4th/5th	W	4/9-4/30	6pm-7pm	\$100/\$150
134838	4th/5th	W	5/7-5/28	6pm-7pm	\$100/\$150
134836	6th-8th	W	4/9-4/30	7pm-8pm	\$100/\$150
134839	6th-8th	W	5/7-5/28	7pm-8pm	\$100/\$150

Biddy Basketball w/Coach O

Ages 5-8

Biddy Basketball and Coach Jason Opoka will work with your young athlete in this program to introduce them to the game of basketball. Participants will take part in physical fitness, fine motor skills, teamwork and fun games. Children will build their physical skills as well as confidence in themselves. Each participant receives a basketball.

Location: Ackerman SFC. (dt)

#/Link	Age	Day	Date	Time	R/NR
134829	5-6	Sa	4/19-5/10	9am-10am	\$120/\$160
134831	5-6	Tu	4/22-5/13	5pm-6pm	\$120/\$160
134830	7-8	Sa	4/19-5/10	10am-11am	\$120/\$160
134832	7-8	Tu	4/22-5/13	6pm-7pm	\$120/\$160

Biddy Basketball: Trick and Train

Ages 5-7

“Trick and Train” is an hour and fifteen minute basketball clinic led by Varsity Head Coach Jason Opoka. This is an adult/child participation event designed to teach adults fundamentals and skills to incorporate at home. These drills relate to basketball but can be used with all sports by focusing on hand-eye coordination, technique, and repetition. *Not affiliated with Glenbard West or District 87. Fee is per child. Adult participation required. Location: Ackerman SFC. (dt)

#/Link	Day	Date	Time	R/NR
134833	Su	5/4-5/4	2pm-3:15pm	\$35/\$50

Kristi Faulkner Spring Basketball Training

Grades 3rd-6th

Train with Kristi Faulkner this Spring. Work on your ball handling, shooting, defense and overall basketball game in this weekly program. Each class is 1 hour and 15 minutes. Location: Ackerman SFC. (dt)

#/Link	Grade	Day	Date	Time	R/NR
134840	3rd/4th	M	4/7-4/28	4:15pm-5:30pm	\$150/\$209
134841	5th/6th	M	4/7-4/28	4:15pm-5:30pm	\$150/\$200



SPRING 2025 • 70

Registration for orange code numbers is open now | Registration for blue code numbers begins at 8am on February 1

cheerleading

Golden Eagles Non-Competitive Cheerleading

Grades K-5th

Teams will begin practicing one or two times per week in August, learning cheers and a halftime routine. As football season begins, teams will practice once per week through October and cheer at weekly Golden Eagles football games. Teams will receive additional technique and stunt instruction with Dupage Cheer and Power Tumbling (DCA). Teams will also participate in an end-of season Cheer Showcase for friends and family alongside the Golden Eagles competition teams to highlight what they have learned. If your athlete wants to participate in both Sideline/Football Cheer and Competitive Cheer, please only sign up for Competitive Cheer.

Practices: Begin week of August 4 to mid-October

Registration and Fees

The cheer program will reuse uniforms, bows, and poms from the 2024 season. The program registration fee and program uniform fee are separate for the 2025 season. The uniform fee include uniform shell and skirt, poms, and bow and the expected fee is \$150. Any athlete needing a new uniform will attend a uniform fitting in April. All athletes must provide their own white gym shoes and will receive a program T-Shirt for the 2025 season. No refunds will be issued effective 5/1. Please register based on the grade that the athlete will be in during the 2025-2026 school year. Registration ends 3/1 (first come, first serve or until max. is reached). (cb)

#/Link	Grade	R/NR
134803	K	\$175
134804	1st	\$175
134805	2nd	\$175
134806	3rd	\$175
135462	4th/5th	\$175

DCA - Golden Eagles Competitive Cheerleading

Grades 3rd-8th (as of 8/1/25)

In partnership with DuPage Cheer and Power Tumbling (DCA), Golden Eagles Cheerleading is excited to once again offer a Super Recreational cheer program competing at Illinois Cheer Association-sanctioned competitions. DCA will provide professional coaching and training to athletes wanting to take their skills to the next level. Depending on the grade, teams will practice 2-3 times per week at Ackerman Sports and Fitness Center. Squads will also learn sideline cheers and perform at as many as four Golden Eagles football games and at the end of season Cheer Showcase.

Team Evaluations will take place March 7 at Ackerman SFC and teams will be assigned by DCA. Teams will compete in three competitions during the season and the State Championship if a bid is achieved.

Summer Practices: June to August; Tuesdays and Thursdays between 4pm-9pm, no weekends.

School Year Practices: August-end of season; Tuesdays and Thursdays between 4pm-9pm, Sundays between 10am-7pm. Each team will have an assigned practice timeslot on these days at Ackerman Sports and Fitness Center.

Registration and Fees

The cheer program will reuse uniforms, bows, and poms from the 2024 season. The program registration fee and program uniform fee are separate for the 2025 season. The uniform fee includes uniform leotard and skirt, poms, and bow and the expected fee is \$355. Any athlete needing a new uniform will attend a fitting in April. All athletes must provide their own white cheer shoes. The cheer program provides professional coaching and choreography, stunt clinics, training, practice space, competition fees, and a program t-shirt. Program fee does not include the State Championship registration fee (approximately \$165) if a bid is received. No refunds will be issued after May 1. A payment plan is available. Please register based on the grade that the athlete will be attending during the 2025-2026 school year. Registration Deadline: March 1 (unless max. is reached sooner). Location: Ackerman SFC. (cb)

#/Link	Grade	R/NR
134781	3rd-8th	\$1,600

Fencing: Olympic Sword Play-Beginner

Ages 7-14

Discover the art of fencing, a unique sport that emphasizes strategy and skill. Ideal for children and teens, fencing enhances agility, strength, coordination, and critical thinking. Equipment is not provided and is available through the Fencing Club. Contact (630) 678-0035 before the start of the class. No class on 5/24. Location: Main Street Recreation Center. (dt)

#/Link	Day	Date	Time	R/NR
134247	Sa	4/26-6/7	11:15am-12:10pm	\$84/\$126

RISE Field Hockey Spring Recreational League

Grades 1st-8th

During the first two weeks, participants will focus on basic skill building and team formation. The remaining four weeks will be small sided games. The full games schedule will be released in mid-April. Athletes need to bring a reversible pinnie for practice and can be purchased for \$15 if needed. Pinnies will be available at first practice. Players also will need to bring a stick, mouthguard, and shin guards. Location: Ackerman SFC. (dt)

#/Link	Grade	Day	Date	Time	R/NR
133531	1st-4th	Th	4/10-5/15	6:30pm-7:30pm	\$110
133530	5th-8th	Th	4/10-5/15	7:30pm-9pm	\$155

DAY CAMPS • SPORTS • NATURE • AND MORE



ready. set. summer.

Experience a summer of fun!
Our full lineup of summer camps offers something for kids of all ages and interests. You're sure to find a camp your child will love.

View the 2025 Summer Camp Guide »

football

Golden Eagles Flag Football

Grades 1st-8th (as of 8/31/25)

Players learn and develop the fundamentals of football, teamwork, sportsmanship, and leadership in a supervised, organized, and safe environment. The flag program begins in August and ends in mid-October with practices held weekly. Games/scrimmages are played on weekends at Newton Park and during the week at Glenbard South High School. The Girls program is separate from the Co-Ed program. (cb)

Registration Deadline: Teams are filled on a first-come basis until June 1. Beginning June 2, registration will remain open if players are needed to fill teams and may close at any time.

Girls

#/Link	Grade	R/NR
134110	6th-8th	\$200

Co-Ed

#/Link	Grade	R/NR
134111	1st/2nd	\$200
134112	3rd/4th	\$200
134113	5th/6th	\$200



Golden Eagles Tackle Football

Ages 7-14 (as of 8/1/25)

The tackle program participates in the Bill George Youth Football League (www.bgyfl.org). Players learn and develop the fundamentals of tackle football, teamwork, sportsmanship and leadership in a supervised, organized and safe environment. This is a travel league that plays teams from surrounding suburbs. The tackle program begins the last week of July/first week of August and ends in early November. Teams practice daily in August and three days a week when school starts through the end of the season. Games are played on weekends at Newton Park and in surrounding communities. Teams are built based on age, weight restriction, ability, and experience. Coaching candidates are encouraged to apply. Additional details are available at the Glen Ellyn Golden Eagles website at glenellynfootball.com. (cb)

Registration Deadline: Teams are filled on a first-come basis until June 1; however, the BGYFL limits roster sizes to a maximum of 26 players per team and registration will close early if maximum roster sizes are reached. Beginning June 2, registration will remain open if players are needed to fill out teams and may close at any time.

#/Link	Level	Age	Weight	R/NR
134114	BG10U	Not 11	98lbs	\$550
134115	BG11U	Not 12	108lbs	\$550
134116	BG12U	Not 13	123lbs	\$550
134117	Varsity	Not 15	158lbs	\$550

Ackerman Youth Flag Football

Ages 8-10

Participants will be introduced to the game of flag football, focusing on fundamental skills, teamwork, and sportsmanship. Our Ackerman SFC instructors will guide participants through a variety of drills, games, contests, and scrimmages to develop their football skill set on offensive and defensive sides of the game. Location: Ackerman SFC. (rb)

#/Link	Day	Date	Time	R/NR
134469	W	4/2-4/23	4:30pm-5:30pm	\$50/\$65
134470	Tu	5/6-5/27	4:30pm-5:30pm	\$50/\$65

ice hockey and skating

Beginner Hockey

Ages 3 and up

For participants who have had no formal instruction, this class teaches basic forward and backward skating while wearing hockey equipment. Hockey skates and helmet required, and hockey sticks are optional. No class from 4/2-4/5 or 4/24-4/26. Location: Center Ice of DuPage. (aa)

Co-ed (Ages 3-13)

#/Link	Day	Date	Time	R/NR
134344	Th	3/13-5/8	4:30pm-5:10pm	\$169
134345	Sa	3/15-5/10	9:10am-9:50am	\$169
134361	Th	5/22-6/26	4:30pm-5:10pm	\$169
134362	Sa	5/24-6/28	9:10am-9:50am	\$169

Teen/Adult (Ages 6 and up)

#/Link	Day	Date	Time	R/NR
134365	Sa	5/24-6/28	8:10am-9:10am	\$179

Adults (Ages 16 and up)

#/Link	Day	Date	Time	R/NR
134346	Sa	3/15-5/10	8:10am-9:10am	\$179



Ice Skating: Basic 1

Ages 3-13

Intended for students with no previous formal instructions. Participants will learn 1- and 2-foot glides, forward and backward swizzles, and backward wiggles. No class from 4/2-4/5 or 4/24-4/26. Skate rentals are available. Location: Center Ice of DuPage. (aa)

#/Link	Day	Date	Time	R/NR
134331	Th	3/13-5/8	4:30pm-5:10pm	\$169
134332	Th	3/13-5/8	5:30pm-6:10pm	\$169
134333	Sa	3/15-5/10	10am-10:40am	\$169
134334	Sa	3/15-5/10	11am-11:40am	\$169
134352	Th	5/22-6/26	4:30pm-5:10pm	\$169
134353	Th	5/22-6/26	5:30pm-6:10pm	\$169
134354	Sa	5/24-6/28	10am-10:40am	\$169

Ice Skating: Teen/Adult Basic 1

Ages 14 and up

This class is “at your own pace” and is perfect for beginners, continuing skaters, or skaters who are returning to the ice after years of hiatus. No class from 4/2-4/5 or 4/24-4/26. Location: Center Ice of DuPage. (aa)

#/Link	Day	Date	Time	R/NR
134335	Th	3/13-5/8	4:30pm-5:10pm	\$169
134336	Th	3/13-5/8	5:30pm-6:10pm	\$169
134337	Sa	3/15-5/10	10am-10:40am	\$169
134338	Sa	3/15-5/10	11am-11:40am	\$169
134355	Th	5/22-6/26	4:30pm-5:10pm	\$169
134356	Th	5/22-6/26	5:30pm-6:10pm	\$169
134357	Sa	5/24-6/28	10am-10:40am	\$169

Special Skater

Ages 3 and up

This class will follow the Learn to Skate USA Adaptive and Basic Skills curriculum and is designed for individuals with disabilities. Skating helps to foster social skills, balance, a team atmosphere, a sense of achievement, and fun. No class from 4/2-4/5 or 4/24-4/26. Location: Center Ice of DuPage. (aa)

#/Link	Day	Date	Time	R/NR
134347	Sa	3/15-5/10	12pm-12:40pm	\$135
134366	Sa	5/24-6/28	11am-11:40am	\$135

Lightning Running Club

Ages 6-14

Come run with us! Kids will build endurance and learn proper running form while training to run between 2K and 3K in this informal, co-ed running club. Runners will be grouped by birth year and/or ability level. Registration fee includes practice time, team t-shirt, and end of season meet. Participants will register by age and gender. Registration for this program will be capped based on the number of volunteers committed to run practices. If you are interested in becoming a volunteer coach, email dtripp@gepark.org. (dt)

- **Mondays** are 5:15pm-6pm at Ackerman Park
- **Saturdays** are 8am-8:45am at Maryknoll Park

Boys

#/Link	Age	Day	Date	Time	R/NR
134807	6-8	M,Sa	4/12-5/31	See above	\$65
134808	9-10	M,Sa	4/12-5/31	See above	\$65
134809	11-12	M,Sa	4/12-5/31	See above	\$65
134810	13-14	M,Sa	4/12-5/31	See above	\$65

Girls

#/Link	Age	Day	Date	Time	R/NR
134812	6-8	M,Sa	4/12-5/31	See above	\$65
134813	9-10	M,Sa	4/12-5/31	See above	\$65
134814	11-12	M,Sa	4/12-5/31	See above	\$65
134815	13-14	M,Sa	4/12-5/31	See above	\$65

Skateboard Lessons

Ages 5-13

Appropriate for beginners and intermediate levels. Beginners will learn how to start, stop, turn, basic ramp riding, and tricks. Intermediate skaters develop skills based on ability. Skaters must bring a drink and wear a helmet and the use of knee, elbow, and wrist guards is encouraged. For inquiries about the proper skateboard for this class, please email sk8lessonschicago@gmail.com. Location: Newton Park. (dt)

#/Link	Age	Day	Date	Time	R/NR
134290	5-7	W	4/9-4/30	4:15pm-5:15pm	\$135
134292	5-7	W	5/7-5/28	4:15pm-5:15pm	\$135
134291	8-13	W	4/9-4/30	5:15pm-6:45pm	\$195
134293	8-13	W	5/7-5/28	5:15pm-6:45pm	\$195

Inclusive Lakers Program

Ages 7-14

This 8 week program is tailored to children with physical, intellectual or developmental disabilities. Our Lakers Future Pros coaches along with peer volunteers will deliver a developmentally appropriate curriculum giving athletes of all abilities a quality soccer experience. This program offers slower paced instruction with increased support, participants will work on motor skills, social skills and team building all while having fun in a safe and inclusive space. Location: Ackerman SFC. (da)

#/Link	Day	Date	Time	R/NR
134860	M	4/7-5/19	4:30pm-5:15pm	\$100

Junior Lakers Soccer

Ages 4-6

Each class is specially crafted to enhance both individual and team soccer skills. We personalize the experience by dividing groups based on skill levels, ensuring every player receives tailored training. Players bring their own ball, cleats, shin guards, and water. Location: Ackerman SFC. (da)

#/Link	Day	Date	Time	R/NR
134858	F	4/11-5/30	4pm-5pm	\$160/\$240



Lakers FC Travel Soccer

Ages 6-14

The Glen Ellyn Lakers Travel Soccer Program is operated by the Glen Ellyn Park District with support from the Lakers Volunteer Committee and dedicated club volunteers. Teams compete at a variety of skill levels in leagues across the Chicago area. The Club is committed to fostering a positive environment that nurtures athletes' development, ensuring they not only enjoy, but truly understand and are motivated to succeed in soccer. All age groups are trained by Future Pros professional training staff. (da)



Lakers Program Fees

Club uniform package is an additional expense

Birth Year	Fees	Includes
2019-2018 All teams (5v5 or 7v7)	\$1,500	Pre-season 3-day camp, training 2x week (fall and spring), training 1x week (winter), league play (fall, winter, and spring), 2 tournaments, 2x week foot skill training, 2x week goalkeeper training, player evaluations.
2017-2016 All teams (7v7)	\$1,600	Pre-season 5-day camp, training 2x week (fall and spring), training 1x week (winter), league play (fall, winter, and spring), 2 tournaments, 2x week foot skill training, 2x week goalkeeper training, player evaluations.
2015-2014 Select, Green, White, Black, Gray (9v9)	\$1,700	Pre-season 5-day camp, training 2x week (fall and spring), training 1x week (winter), league play (fall, winter, and spring), 2 tournaments, 2x week foot skill training, 2x week goalkeeper training, player evaluations.
2015-2014 Elite, Premier (9v9 or 11v11)	\$2,000	Pre-season 5-day camp, training 3x week (fall and spring), training 1x week (winter), league play (fall, winter, and spring), 3 tournaments, 2x week foot skill training, 2x week goalkeeper training, player evaluations.
2013-2012 Select, Green, White, Black, Gray (11v11)	\$1,800	Pre-season 5-day camp, training 2x week (fall and spring), training 1x week (winter), league play (fall, winter, and spring), 2 tournaments, 2x week foot skill training, 2x week goalkeeper training, player evaluations.
2013-2012 Elite, Premier (11v11)	\$2,100	Pre-season 5-day camp, training 3x week (fall and spring), training 1x week (winter), league play (fall, winter, and spring), 3 tournaments, 2x week foot skill training, 2x week goalkeeper training, player evaluations.

2024/25 Team Tryouts

Tryouts are a two-day process and a requirement for any player interested in playing on a Lakers team, including current Lakers players. All players must attend both days of tryouts to be eligible to make a team. Age groups are determined by the birth year of the player. All tryouts will be held at Ackerman Park and conducted by Future Pros trainers. Please contact daddanki@gepark.org for any additional questions. All players must pre-register at gepark.org/register. Players have 24-hours to respond to their tryout invitation. (da)

- Early check-in Friday, April 25 from 3pm to 6pm
- Selected players will be notified via email no later than two days after the final tryout dates.
- A \$300 commitment fee is due 24 hours after teams are announced.

#/Link	Birth Year	Date	Time
134867	2019 Boys	4/28-4/29	4:30pm-6pm
134869	2018 Boys	4/28-4/29	4:30pm-6pm
134871	2017 Boys	4/30-5/1	4:30pm-6pm
134873	2016 Boys	4/28-4/29	6:15pm-7:45pm
134875	2015 Boys	4/30-5/1	6:15pm-7:45pm
134877	2014 Boys	4/30-5/1	6:15pm-7:45pm
134879	2013 Boys	4/30-5/1	4:30pm-6pm
134881	2012 Boys	4/28-4/29	4:30pm-6pm
134868	2019 Girls	5/5-5/6	4:30pm-6pm
134870	2018 Girls	5/5-5/6	4:30pm-6pm
134872	2017 Girls	5/5-5/6	4:30pm-6pm
134874	2016 Girls	5/5-5/6	6:15pm-7:45pm
134876	2015 Girls	5/5-5/6	6:15pm-7:45pm
134878	2014 Girls	5/5-5/6	6:15pm-7:45pm
134880	2013 Girls	5/5-5/6	4:30pm-6pm



Midwest FC Travel Soccer

Ages 14-18

The Midwest FC travel soccer program strives to provide a positive, competitive environment to produce soccer players who have the desire to compete at the high school level. Teams will train locally and participate in college showcase tournaments to create well-rounded soccer players. Teams will compete across the Chicagoland area in league play as well as attending out of state tournaments. All teams are trained and coached by a member of Future Pros, our professional training staff. Teams will also have league games and tournament games recorded on video for players to utilize for college recruitment. (da)

Midwest FC Program Fees

Club uniform package is an additional expense

Birth Year	Fees	Includes
High School Boys 2011-2007 (11v11)	\$2,000	Training 2x week (winter), training 3x week (spring), league play (winter and spring), 2 tournaments, 2x week foot skills training, 2x week goalkeeper training, Trace video analysis for players to utilize for college recruitment purposes, and Player Evaluations
High School Boys 2011-2007 8th Grader (11v11)	\$2,300	Pre-season 5-day camp, training 2x week (winter), training 3x week (fall and spring), league play (fall, winter and spring), 3 tournaments, 2x week foot skills training, 2x week goalkeeper training, Trace video analysis for players to utilize for college recruitment purposes, and Player Evaluations
High School Girls 2011-2007 (11v11)	\$2,000	Pre-season 5-day camp, training 2x week (winter), training 3x week (fall), league play (fall and winter), 2 tournaments, 2x week foot skills training, 2x week goalkeeper training, Trace video analysis for players to utilize for college recruitment purposes, and Player Evaluations
High School Girls 2011-2007 8th Grader (11v11)	\$2,300	Pre-season 5-day camp, training 2x week (winter), training 3x week (fall and spring), league play (fall, winter and spring), 3 tournaments, 2x week foot skills training, 2x week goalkeeper training, Trace video analysis for players to utilize for college recruitment purposes, and Player Evaluations

2024/25 Team Tryouts

Tryouts are a two-day process and a requirement for any player interested in playing on a Midwest FC team. All players must attend both days of tryouts to be eligible to be selected for a team. Due to US Club Soccer mandates, age cutoffs follow the birth year for all players. All tryouts are conducted by Future Pros trainers. All players must pre-register at gepark.org/register. Players will have 24-hours to respond to their tryout information. (da)

- Early check-in Friday, April 25 from 3pm to 6pm
- Selected players will be notified via email no later than two days after the final tryout dates.
- A \$300 commitment fee is due 24 hours after teams are announced.

#/Link	Birth Year	Date	Time
134883	2011 Boys	4/28-4/29	8pm-9:30pm
134885	2010 Boys	4/28-4/29	8pm-9:30pm
134887	2009 Boys	4/30-5/1	8pm-9:30pm
134889	2008 Boys	4/30-5/1	8pm-9:30pm
134882	2012 Girls	5/5-5/6	8pm-9:30pm
134884	2011 Girls	5/5-5/6	8pm-9:30pm
134886	2010 Girls	5/5-5/6	8pm-9:30pm
134888	2009 Girls	5/5-5/6	8pm-9:30pm
134890	2008 Girls	5/5-5/6	8pm-9:30pm

Chicago Red Stars Day Off School Camp

Ages 5-12

Challenge yourself with a more intense and competitive soccer camp experience with Chicago Red Stars. Red Stars Park District camps are led by current Red Stars Academy staff and coaches. We aim to provide a professional, fun and welcoming environment for kids to cultivate new skills while further developing and mastering current strengths. The camp curriculum focuses on foot skills, passing/receiving, and finishing techniques that allow players to be successful in game situations. Campers will receive a T-Shirt and other swag! Location: Ackerman SFC. (da)

#/Link	Day	Date	Time	R/NR
134864	F	5/9	9am-3pm	\$120
134863	F	5/9	9am-12pm	\$75

Ultimate Frisbee Disc League

Ages 9-13

The fall Ultimate Disc league is open to youth ages 9-13. Be part of this fun, fast growing, non-contact sport unique in its emphasis on player leadership through self-officiating. On league night, mixed-gender teams will have a short practice developing skills through activities like throwing accuracy games, partner catching, Randy Moss drills, footwork games and pulling contests, followed by league play. Develop your skills, make new friends, and experience the thrill of being part of a team. All levels are welcome. No games on 4/2. Location: Ackerman Park. (dt)

#/Link	Day	Date	Time	R/NR
134828	W	3/19-5/7	5pm-7pm	\$75

Chicago Union Ultimate Frisbee Clinic

Ages 9-12

This co-ed clinic will focus on the basic skills of throwing, catching, cutting and the sportsmanship. Throwing drills for accuracy, catching games and lots of scrimmaging will keep participants active the whole clinic. Open to all levels of players including beginners. Instructors from the Chicago Union Ultimate Frisbee team. Location: Ackerman Park. (dt)

#/Link	Day	Date	Time	R/NR
134827	Sa	5/10	12pm-2pm	\$15

Youth Dodgeball Tournament

Grades 3rd-6th

Dip, duck, and dive! The Glen Ellyn Youth Dodgeball Tournament is loaded with fun and competition. Brackets will be divided up based on age. Teams are guaranteed two matches followed by playoffs for those teams that qualify. Teams can have a maximum of 8 players as matches are played with 6 on the court. Register your team under one name, who will be the Team Captain. Location: Ackerman SFC. (rb)

#/Link	Grade	Day	Date	Time	R/NR
134448	3rd/4th	Su	5/11	10am-2pm	\$70/\$100
131217	5th/6th	Su	5/11	10am-2pm	\$70/\$100





taekwondo

New students are required to purchase a uniform at or prior to the first class from the instructor. This fee is not included in the registration fee. Colored belt students are required to have complete sparring gear. US Martial Arts Academy is located at 682 Roosevelt Road, Glen Ellyn.

Tiny Tigers Taekwondo (All Belts)

Ages 4-5

This introductory class is designed to captivate the interest of our youngest students. Skills are developed through gentle instruction and appropriate games for their ability. Children will be evaluated by instructors at the first class to determine their readiness for the program. Children not meeting proper behavior or attention span may be asked to rejoin class in a later session. Refunds will be issued if children are not ready for the class. All belts. Location: US Martial Arts Academy. (dt)

#/Link	Day	Date	Time	R/NR
134817	Sa	4/12-6/14	11:30am-12:20pm	\$179/\$269

Early Taekwondo (All Belts)

Ages 6-7

Designed especially for the younger children of 6-7 years, this program helps kids develop conditioning, coordination, listening skills, and self-confidence through creative activities. All belts. Location: US Martial Arts Academy. (dt)

#/Link	Day	Date	Time	R/NR
134816	Sa	4/12-6/14	11:30am-12:20pm	\$179/\$269

Youth and Adult Taekwondo (All Belts)

Ages 7 and up

This program includes a balanced cardiovascular workout, including punching, kicking, and blocking skills, using the taekwondo tradition, and self-control. Participants will improve coordination, power of concentration, balance, and both physical and mental discipline. All belts. Location: US Martial Arts Academy. (dt)

#/Link	Day	Date	Time	R/NR
134818	Sa	4/12-6/14	12:25pm-1:15pm	\$179/\$269

shotokan karate

Pre-Karate

Ages 4-6

Children will develop flexibility, strength, and coordination through fun and creative activities. Watch your child blossom while learning karate and having a blast at the same time! Uniforms and belt testing are optional and available through the instructor for an additional fee. Min/Max: 5/10. (dt)

Youth/Adult Karate

Ages 7 and up

ISKC's Karate classes offer a good mix of strength training with cardiovascular and flexibility exercises. Students increase their coordination, agility and poise, as well as learn lasting personal safety skills. They also benefit from mental stimulation of learning the choreographed moves of the Kata and the discipline of conforming to the class rules. Min/Max: 5/20. (dt)

Adult Karate

Ages 15 and up

In addition to teaching self-defense skills, karate develops flexibility, muscle tone, and core strength. Continuing students will need to purchase additional protective gear. Uniforms and belt testing are optional and available through the instructor for a fee. Min/Max: 8/25. (dt)



Main Street Recreation Center

#/Link	Class	Age	Day	Date	Time	R/NR
134819	Youth/Adult Beg./Nov. (White-Yellow)	7 and up	W	4/2-6/4	6:45pm-7:40pm	\$153/\$230
134820	Youth/Adult Inter./Adv. (Blue-Black)	7 and up	W	4/2-6/4	7:45pm-8:40pm	\$153/\$230
134821	Adult Inter./Adv. (Blue-Black Only)	15 and up	W	4/2-6/4	8:45pm-10pm	\$170/\$255

Wheaton Park District

#/Link	Class	Age	Day	Date	Time	R/NR
134822	Pre-Karate (Beg.-Continuing)	4-6	W	4/2-6/4	4:30pm-5:15pm	\$153/\$230
134823	Pre-Karate (Inter./Adv.)	4-6	W	4/2-6/4	5:15pm-6pm	\$153/\$230
134824	Youth/Adult Beg./Nov. (White-Orange Belts)	7 and up	Sa	4/5-6/7	2pm-2:55pm	\$153/\$230
134825	Youth/Adult (Yellow - Purple Belts)	7 and up	Sa	4/5-6/7	3pm-3:55pm	\$153/\$230
134826	Youth/Adult Advanced (Brown Belt & up)	7 and up	Sa	4/5-6/7	4pm-4:55pm	\$153/\$230

adult sports

Adult Dodgeball Tournament

Ages 18 and up

Relive your memories of middle school gym class! Run, throw, dodge, and duck your way to victory in our Adult Dodgeball Tournament at Ackerman SFC. Teams are guaranteed two matches followed by playoffs for those teams that qualify. There is an 8-player maximum per team as matches are played with 6 on the court. Register your team under one name, who will be the Team Captain. Location: Ackerman SFC. (rb)

#/Link	Day	Date	Time	R/NR
134451	Su	5/11	10am-2pm	\$75

Adult CoEd Sand Volleyball League

Ages 21 and up

Teams play a regular season followed by a single-elimination postseason tournament. Team captains will register teams and must submit a roster with signed waivers prior to the first game. The league rules, schedule, and roster form will be emailed to team captains. Each team must consist of a minimum of six players. Two members of the opposite gender must be on the court at all times. The league will be self-officiated; however, final scores will be reported to a site supervisors. Winners of the league will receive a trophy and a gift basket full of gift cards to local Glen Ellyn vendors. Location: Ackerman SFC. (rb)

Competitive

#/Link	Day	Date	Time	R/NR
134452	M	6/2-8/4	6pm-10pm	\$100/\$150

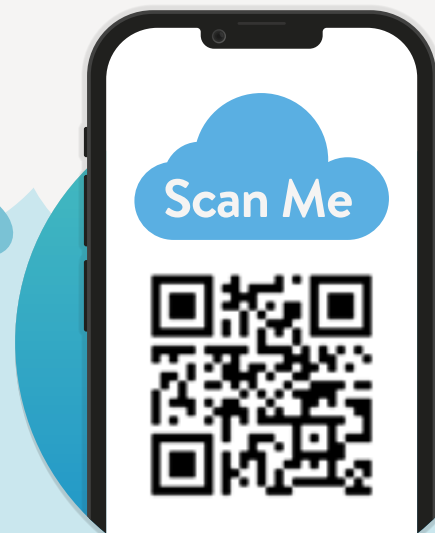
Non-Competitive

#/Link	Day	Date	Time	R/NR
131567	W	6/11-8/13	6pm-10pm	\$100/\$150



GLEN ELLYN PARK DISTRICT Hotline (Rainout Line)

Stay informed about program/event cancellations or facility closures due to adverse weather or other factors by utilizing the Glen Ellyn Park District's hotline, powered by Rainout Line.





racquet sports

Platform Tennis Center Memberships

Open year-round, the Glen Ellyn Platform Tennis Center features six courts and modern Paddle Hut. A membership is required to use the facility, but non-members are welcome to sign up for private lessons and classes (when available). Platform tennis is the only racquet sport that players can enjoy outdoors in any climate. You don't need to have prior knowledge of the game as it's easy to learn.

Member Benefits

- No additional court fees to play year-round.
- Unlimited access to court time when not programmed with leagues, lessons or events.
- Access to the Paddle Hut between 7am and 11pm.
- Privilege of making court reservations 7 days in advance. Note: four courts are reserved for the Glen Ellyn Platform Travel Club on Tuesday, Wednesday, and Thursday evenings from October-March.
- Discount on lessons.

2024/25 Partial Year Membership Rates



Valid January 1 to August 31, 2025

Type	Resident	Nonresident	Add'l Child
Adult (18 & up)	\$200	\$260	-
Junior (6-17)	\$50	\$75	-
Family	\$450	\$540	\$15

Family includes 2 adults (same household) or 2 adults and 2 children (age 17 and under) per household. Youth members must be accompanied by an adult and do not receive a key to the Paddle Hut.

Platform Tennis

Platform Tennis

Quick Start

Ages 21 and up

This is a fun and dynamic crash course that covers all the basics of Platform Tennis, including court positioning, stroke technique, screen play, communication, scoring, and rules of the game. Best for beginners and advanced beginners. Location: Maryknoll Park. (bt)

Men's

#/Link	Day	Date	Time	R/NR
134715	Tu	4/15-5/13	6pm-7pm	\$125/\$150

Women's

#/Link	Day	Date	Time	R/NR
134716	M	4/14-5/12	6pm-7pm	\$125/\$150
134717	Tu	4/15-5/13	9:30am-10:30am	\$125/\$150

Monday Spring In-House Co-Rec League

Ages 21 and up

This popular league is open to Glen Ellyn Platform Tennis Center members only and is designed to help introduce new players to the game and enhance the experience for advanced beginners. Sign up is first come, first serve. Players will be ranked by the Platform Tennis Pro and placed on teams. All games are played on platform tennis courts at Maryknoll Park. Email mcunnington@gepark.org for more information. Location: Maryknoll Park. (bt)

#/Link	Day	Date	Time	R/NR
134718	M	4/14-5/19	7pm-10pm	\$90/\$115

Platform Tennis Private Lessons

Our Platform Tennis Professional, Mark Cunnington, can tailor lessons to your specific needs. Mark comes to the Park District highly skilled in the sport of platform tennis as well as tennis. USPTA and PPTA certified, Mark has over 10 years' experience in coaching platform tennis. To get started, email mcunnington@gepark.org. Pricing below is listed per person; semi-private lessons are for two players. (bt)

Type and Duration	Member	Non-Member
Private 30-Minute	\$35	\$40
Private 60-Minute	\$70	\$80
Semi-Private 30-Minute	\$18	\$22
Semi-Private 60-Minute	\$35	\$40
3 & A Pro 30-Minute	\$15	\$20
3 & A Pro 60-Minute	\$25	\$30
5 Private 60-Minute	\$300	\$360

Wednesday Spring In-House Women's League

Ages 21 and up

This league is geared toward female players. Members will be evaluated by our Platform Pro and placed on teams. Teams will play a weekly match on our courts with other Glen Ellyn Park District Paddle members. Must hold a Glen Ellyn Platform Tennis Membership. Contact Platform Tennis Pro Mark Cunnington gepaddlepro@gmail.com for more information. Location: Maryknoll Park. (bt)

#/Link	Day	Date	Time	R/NR
134719	W	4/16-5/21	5pm-6:30pm	\$90/\$115



Pickleball

Pickleball Start/Restart

Ages 18 and up

Interested in joining one of the fastest growing sports? Whether you're new to the sport of Pickleball or need a refresher, Pickleball Start/Restart covers the basic skills, grips, and strategies of the game including rules, scoring, and basic skills. Players are required to provide their own paddle. Beginner class will focus on learning the game including rules, scoring, and basic skills. Intermediate class will focus on learning specific shot types, strategies and coached match play. Location: Village Green Park. (bt)

Beginner

#/Link	Day	Date	Time	R/NR
134723	Th	4/17-5/8	10am-11am	\$90/\$135
134722	M	4/14-5/5	10am-11am	\$90/\$135
134724	M	5/12-6/9	10am-11am	\$90/\$135
134725	Th	5/15-6/12	10am-11am	\$90/\$135

Intermediate

#/Link	Day	Date	Time	R/NR
134726	M	4/14-5/5	11am-12pm	\$90/\$135
134727	Th	4/17-5/8	11am-12pm	\$90/\$135
134728	M	5/12-6/9	11am-12pm	\$90/\$135
134729	Th	5/15-6/12	11am-12pm	\$90/\$135

Pickleball In-House League

Ages 18 and up

Interested in joining one of the fastest growing sports? Join this recreational league where participants will receive basic instruction during the first week of the session. Players will be divided up in teams by our staff with match schedules to be played for the remainder of the season. Players are required to provide their own paddle. Location: Village Green Park. (bt)

Beginner

#/Link	Day	Date	Time	R/NR
134720	W	4/9-5/21	5pm-6:15pm	\$75/\$105

Advanced

#/Link	Day	Date	Time	R/NR
134721	W	4/9-5/21	6:15pm-7:30pm	\$75/\$105

Tennis

Spring Tennis

Ages 4-14

Looking to get a jump on your learning or improving your tennis skills? This is the perfect activity to learn the game of tennis in just five short weeks. Please bring a racquet to class or you can purchase a junior-sized racquet online using code [#134731](#). Location: Sunset Park. (bt)

Red Blast (Ages 4-6)

#/Link	Day	Date	Time	R/NR
134732	M	4/14-5/12	4pm-5pm	\$110/\$150
134733	W	4/16-5/14	4pm-5pm	\$110/\$150

Orange Blast (Ages 7-8)

#/Link	Day	Date	Time	R/NR
134734	M	4/14-5/12	5pm-6pm	\$110/\$150
134735	W	4/16-5/14	5pm-6pm	\$110/\$150

Green Blast (Ages 9-10)

#/Link	Day	Date	Time	R/NR
134736	Tu	4/15-5/13	4pm-5pm	\$110/\$150
134737	Th	4/17-5/15	4pm-5pm	\$110/\$150

Junior Competitive (Ages 11-14)

#/Link	Day	Date	Time	R/NR
134738	Tu	4/15-5/13	5pm-6pm	\$110/\$150
134739	Th	4/17-5/15	5pm-6pm	\$110/\$150

Saturday Adult/Child Tennis

Ages 5-10

This adult/child tennis class is a great opportunity to learn tennis together in a fun environment. All ability levels are welcome. The class will focus on learning the game in a unique and friendly environment. Fee is per adult/child couple. Session ages are based on the child's age. Location: Glenbard West. (bt)

#/Link	Day	Date	Time	R/NR
134740	Sa	6/7-6/28	9am-10am	\$120/\$160
134741	Sa	7/12-8/2	9am-10am	\$120/\$160

Tennis Youth

Ages 4-10

Our outdoor group tennis lessons on the courts at Glenbard West focus on teaching ball skills, fundamentals, and making sure your child loves tennis. All ability levels are welcome. Most lessons are held Monday through Thursday with weather make-up days on Fridays. Register by the week or purchase a 10- or 20- lesson pack. Please bring a racquet to class or you can purchase one online for \$30 using code [#134731](#). Each participant in the summer program receives a t-shirt. Location: Glenbard West.

Red Blast (Ages 4-6)

#/Link	Day	Date	Time	R/NR
134743	M-Th	6/9-6/12	9am-10am	\$90/\$130
134744	M-Th	6/16-6/19	9am-10am	\$90/\$130
134745	M-Th	6/23-6/26	9am-10am	\$90/\$130
134746	M-Th	6/30-7/3	9am-10am	\$65/\$95
134747	M-Th	7/7-7/10	9am-10am	\$90/\$130
134748	M-Th	7/14-7/17	9am-10am	\$90/\$130
134749	M-Th	7/21-7/24	9am-10am	\$90/\$130
134750	M-Th	7/28-7/31	9am-10am	\$90/\$130

Orange Blast (Ages 7-8)

#/Link	Day	Date	Time	R/NR
134752	M-Th	6/9-6/12	10am-11am	\$90/\$130
134753	M-Th	6/16-6/19	10am-11am	\$90/\$130
134754	M-Th	6/23-6/26	10am-11am	\$90/\$130
134755	M-Th	6/30-7/3	10am-11am	\$65/\$95
134756	M-Th	7/7-7/10	10am-11am	\$90/\$130
134757	M-Th	7/14-7/17	10am-11am	\$90/\$130
134758	M-Th	7/21-7/24	10am-11am	\$90/\$130
134759	M-Th	7/28-7/31	10am-11am	\$90/\$130

Green Blast (Ages 9-10)

#/Link	Day	Date	Time	R/NR
134761	M-Th	6/9-6/12	11am-12pm	\$90/\$130
134762	M-Th	6/16-6/19	11am-12pm	\$90/\$130
134763	M-Th	6/23-6/26	11am-12pm	\$90/\$130
134764	M-Th	6/30-7/3	11am-12pm	\$65/\$95
134765	M-Th	7/7-7/10	11am-12pm	\$90/\$130
134766	M-Th	7/14-7/17	11am-12pm	\$90/\$130
134767	M-Th	7/21-7/24	11am-12pm	\$90/\$130
134768	M-Th	7/28-7/31	11am-12pm	\$90/\$130

Lesson Packs

#/Link	Type	R/NR
134782	10 Class Pack (Come to any 10 lessons)	\$240
134783	20 Pack(Come to any 20 lessons)	\$380

Adult Cardio Tennis

18 and up

This class is designed for all levels of tennis and will focus on moving and hitting tennis ball at a fast paced level with the pro. Sign up for this aerobic workout and improve your cardio fitness while enjoying the game of tennis. No class on 6/30. Location: Glenbard West. (bt)

#/Link	Day	Date	Time	R/NR
134798	M	6/2-7/21	6pm-7pm	\$155/\$185
134799	Tu	6/3-7/22	5pm-6pm	\$155/\$185
134800	W	6/4-7/23	6pm-7pm	\$155/\$185
134801	Th	6/5-7/24	7am-8am	\$155/\$185

Adult Tennis-Practice/Play

18 and up

This class is designed for the beginner through intermediate level tennis player. The program will focus on fast-paced drills, advanced technical instruction, strategy at the singles and doubles level and much more. This is a perfect environment to get in good playing time while improving your game. No class on 6/30 or 7/1. Location: Glenbard West. (bt)

#/Link	Day	Date	Time	R/NR
134794	M	6/2-7/21	7am-8am	\$155/\$185
134795	M	6/2-7/21	7pm-8pm	\$155/\$185
134796	Tu	6/3-7/22	10am-11am	\$155/\$185
134797	Tu	6/3-7/22	7pm-8pm	\$155/\$185

Adult Tennis-Start/Restart

18 and up

This class is designed for the beginner through intermediate level tennis player. The program will focus on developing consistency and control in your game while learning singles and doubles strategies. The class will include drills and point play in a relaxed and friendly environment. Instructor: Mark Cunnington. No class on 7/1. Location: Glenbard West. (bt)

#/Link	Day	Date	Time	R/NR
134793	Tu	6/3-7/22	6pm-7pm	\$155/\$185

Junior Competitive

Grades 6th-12th

This program is offered for beginner through intermediate players who are looking for a summer-long experience at learning and improving their tennis skills. Players will achieve success as they progress through a series of game-based drills. Players will be instructed in game strategy, while also focusing on improvement on form, footwork and sportsmanship. There will be opportunities to play other tennis clubs in the area on Fridays. Varsity session is for Varsity level players or top JV1. This session will be fast paced drills with matchplay. This program will be taught by Mark Cunnington. Glen Ellyn Park District tennis professional and Glenbard West coaches Kevin Graham and Tad Keely. No class from 6/30-7/3. Location: Glenbard West. (bt)

Grades 6-8

#/Link	Day	Date	Time	R/NR
134784	M,W	6/2-7/23	12pm-1:30pm	\$215/\$240
134785	Tu,Th	6/3-7/24	12pm-1:30pm	\$215/\$240
134786	16-Pack (Come to any 16 lessons, M-Th)			\$285/\$310
134787	Summer Pass (Attend all M-Th classes)			\$350/\$400

Grade 9-12 (Beginner/JV2)

#/Link	Day	Date	Time	R/NR
134788	M,W	6/2-7/23	1:30pm-3pm	\$215/\$240

Grade 9-12 (JV/Varsity)

#/Link	Day	Date	Time	R/NR
134789	Tu,Th	6/3-7/24	1:30pm-3pm	\$215/\$240

Grade 9-12 Lesson Packs

#/Link	Day	Date	Time	R/NR
134791	16-Pack (Come to any 16 lessons, M-Th)			\$285/\$310
134792	Summer Pass (Attend all M-Th classes)			\$350/\$400



Outdoor Courts

Outdoor Tennis Courts

Hardcourt tennis courts are open for public use when not scheduled for Park District programs or lessons. Nets are taken down each winter and replaced in mid-March, weather permitting. Outdoor tennis court lights, where available, are operational from mid-March through mid-November. (bt)

George Ball Park

800 Elm Street

Six tennis courts with timer-controlled lights. Closed daily at 10pm.

Sunset Park

483 Fairview Avenue

Two tennis courts with timer-controlled lights. Closed daily at 10pm.

Newton Park

707 Fairview Avenue

Two unlighted courts.
Closed daily at dusk.

Outdoor Pickleball Courts

Outdoor pickleball courts are open for public use when not scheduled for Park District programs or lessons. Nets are taken down each winter and replaced in mid-March, weather permitting. Courts are available on a first-come, first-served basis. Please limit play when courts are in demand as a courtesy to other players. (bt)

Village Green Park

130 S. Lambert Road.

Six unlighted pickleball courts.

Newton Park

707 Fairview Avenue

The unlighted tennis courts are also lined for pickleball. Note, the nets cannot be lowered.

George Ball Park

800 Elm Street

The lighted courts also have three courts lined for pickleball. Note, the nets cannot be lowered.

Clay Tennis Court Season Passes

A season pass to our newly renovated Clay Tennis Courts, valid April 1 to November 1, must be purchased annually to use the clay tennis courts at Lake Ellyn Park. Clay Court members will receive a login to make online court reservations for court time. The courts are open daily, dawn to dusk. (bt)

The season pass fee may be paid online or at Spring Avenue Recreation Center starting March 1; however, members must pick up their key in-person at Spring Avenue Recreation Center.

#/Link	R/NR
134802	\$150/\$225

ackerman sfc

800 ST. CHARLES ROAD, GLEN ELLYN • WWW.ACKERMANSFC.COM



ackerman SFC facility hours

Fitness Center/Walking Track

Monday-Thursday	4:30am-10pm
Friday	4:30am-9pm
Saturday	6am-7pm
Sunday	7am-7pm

Registration Office

Monday-Friday	8:30am-9pm
Saturday	7am-7pm
Sunday	7am-7pm

Holidays

April 20	7am-1pm
May 26	7am-1pm

what's in the gym

- PRECOR Adaptive Motion Trainers
- PRECOR EFX Ellipticals with Crossramp
- Matrix and Life Fitness Treadmills
- NuStep Recumbent Steppers
- Matrix, Octane, and Life Fitness Ellipticals
- Matrix ARC Trainers
- Matrix Bikes (Recumbent/Upright/Hybrid)
- Matrix Single Station Strength Machines
- Gauntlet Stairmasters
- Scifit Pro2 Trainers
- Concept 2 Rowing Machines
- Xerball and Medicine Ball
- Free Weights and Core Conditioning
- Stretching & CrossFit Area w/TRX Straps
- Cable Cross Weight Machines

amenities

7,000+ square foot fitness center, 3-court gymnasium, 45-yard by 60-yard indoor turf field, 2-lane indoor track (10.3 laps = 1 mile), group fitness studio, cycle studio, multi-purpose room, 6,000-square-foot gymnastics center, training room with batting cages, locker rooms and shower facilities, and free Wi-Fi.

[Group Fitness Schedule »](#)

[Personal Training Packages »](#)



membership rates and benefits

\$0 ENROLLMENT FEE

- Fitness center and indoor track access
- Free weekly group fitness classes
- Open court/turf time
- Orientation with a personal trainer
- Bring a guest on the first Wednesday of the month

We will automatically charge your membership fees to the credit/debit card you place on file each month.

Membership Type*	Resident	Nonresident
Teen (14-17)	\$21	\$23
Senior (60+)	\$21	\$23
Active Military	\$21	\$23
Individuals (18-59)	\$30	\$35
Couple	\$50	\$55
Family	\$60	\$65

*Residents are defined as those living within Glen Ellyn Park District boundaries. Proof of age may be required if requested. A teen is defined as a person aged 14-17 (or 11-13 if certified). A waiver must be signed by a legal guardian. An individual is defined as a person aged 18 and up. A senior is defined as a person aged 60 and up. A family is defined as up to six immediate family members residing in the same household, including children 26 years and younger living at home. Other relatives and individuals in the same household are not included in the family pass. Children 10 years and under have access to open court and turf. Children aged 8 to 13 can access the track with an adult. The fitness center is available for children aged 14 years and older (or 11-13 after orientation; see the front desk to set up an appointment). A couple is defined as two people living at the same address.

special offers for students & teachers

90 Days for \$90

Stay committed to your workouts during summer break. Teachers and students (ages 14+) can sign up for an Ackerman SFC membership good for 90 days for only \$90 any time between May 1 to June 15, 2025.*

**A valid school ID or proof of employment is required at time of purchase. Must be 14 years of age or older. 90-day memberships do not renew automatically.*

\$15 Spring Break Passes (Students and Teachers)

Don't go on break from your workout. Teachers and students (ages 14+) can purchase a 1-week membership for just \$15 at Ackerman SFC. Sign up for an Ackerman SFC membership good for 7 days for only \$15 any time between March 1 to April 20, 2025.

**A valid school ID or proof of employment is required at time of purchase. Must be 14 years of age or older.*

work in glen ellyn?

Ackerman SFC offers special membership rates to Glen Ellyn employees and teachers with proof of employment. Call or visit the Ackerman SFC front desk for details.



group fitness classes

Group fitness classes are included as part of the Ackerman SFC member fee. With more than 70 options to choose from each week, you're sure to find a class to fall in love with. Classes do not require registration and may take place on the court, turf, multi-purpose room, fitness studio, cycle studio, or training room.

Group Fitness Schedule »

walking track

The track is free for Ackerman members. Ages 8-13 must be accompanied by a member age 18 years or older to use the walking track.

DAILY DROP-IN

Ackerman SFC member Free
 R/NR Daily Drop-in..... \$5/\$7

ANNUAL PASSES

Resident (Ages 8-59)..... \$35
 Nonresident (Ages 8-59) \$50
 Senior (Ages 60 & Up)..... \$25

open pickleball

Using a paddle, low net and a plastic ball with holes, this unique sport is enjoyed by people of All ages and athletic abilities thanks to its ease of play and straightforward rules.

SCHEDULE

To view the schedule, visit: ackermansfc.com/pickleball

FEES

Ackerman SFC member Free
 R/NR Daily Drop-in..... \$5/\$7
 R/NR 5-Visit Punch Card \$20/\$30

open court & turf

No reservations required. Please call the Ackerman SFC front desk for daily available open gym times. Open to both members and non-members.

DAILY DROP-IN FEES

Ackerman SFC member Free
 Youth R/NR Daily Drop-in..... \$4/\$5
 Adult R/NR Daily Drop-in \$5/\$6

personal training packages

Packages are for members only. Individual, 60-minute sessions are \$86 for non-members. Non-members may purchase individual sessions at the Ackerman SFC front desk (not available for purchase online). Contact Sean Gallagher at sgallagher@gepark.org for more information.

PERSONAL TRAINER

Program	Price Per Session	Total Package Price
1x60 mins private	\$50	\$50
6x60 mins private	\$47.50	\$285
12x60 mins private	\$45	\$540
1x30 mins private	\$32.50	\$32.50
6x30 mins private	\$30	\$180
12x30 mins private	\$27.50	\$330
1x60 mins partner	\$32.50	\$32.50
6x60 mins partner	\$30	\$180
12x60 mins partner	\$27.50	\$330

MASTER TRAINER

Program	Price Per Session	Total Package Price
1x60 mins private	\$65	\$65
6x60 mins private	\$62.50	\$375
12x60 mins private	\$60	\$720
1x30 mins private	\$37.50	\$37.50
6x30 mins private	\$35	\$210
12x30 mins private	\$32.50	\$390
1x60 mins partner	\$37.50	\$37.50
6x60 mins partner	\$35	\$210
12x60 mins partner	\$32.50	\$390

sports training

Visit the Ackerman SFC front desk for more information or to schedule your sessions.

Sports Performance Training

Sports Performance Coaches can help players in all sports programs increase their athleticism. Sessions focus on the three major goals of improving athletic performance, reducing athletic injuries, and teaching lifelong fitness and movement skills. You'll receive a customized workout plan to target different areas of the body and learn how to properly use workout equipment. Sessions start at \$29. Contact Sean Gallagher at sgallagher@gepark.org for more information.

Volleyball Training

All-State Coach Christine Giunta-Mayer offers private lessons for student athletes in 5th grade through college. Private lessons are perfect for players who want to focus on specifics of their game. Sessions start at \$70.

Basketball Training

Sign up for private lessons from Skill Development Coach Brett Love. Brett has high school and collegiate level playing experience with the credentials to train players to take their skills to the next level. Sessions start at \$45.

Sign up for private lessons with Sean Gallagher who has many years of experience in coaching competitive travel basketball. Sessions start at \$45.

MEMBERSHIP ADD-ON college of dupage lap swimming

Active Ackerman SFC fitness members (ages 16+) may purchase a lap swimming monthly membership to swim at College of DuPage's indoor pool for just \$20 per member per month. Members aged 16-17 must have an adult/guardian sign the College's waiver of liability. Walking track only members are not eligible for this offer. To sign up, visit the College's Member Service Office where they will set up your membership. C.O.D. indoor pool hours are available at: gepark.org/cod

rentals & parties

Ackerman SFC

Three full-size basketball courts and an indoor artificial turf field are available to rent for practices, games, and more. The facility also features an outdoor sand volleyball court, training room, fitness/dance studios, multi-purpose room, and a party room. Call (630) 317-0134 or email bthomas@gepark.org for details.

Civic Center Wiedner Auditorium

You can rent the Civic Center gymnasium through the Park District. Call (630) 317-0134 or email bthomas@gepark.org for details.

Batting Cage Rentals

Four batting cage tunnels are available to rent at Ackerman SFC. Rental includes use of a batting cage tunnel and one L screen. This facility requires visitors to bring their own sport-specific ball. Guests of high school age and older may use the batting cages independently. Guests in 8th grade and below must be accompanied by an adult at all times. Please note, the use of batting cages is not included with memberships, punch cards, or daily drop ins. Batting cages can be reserved in advance by calling (630) 317-0134 or emailing bthomas@gepark.org.

Birthday Parties

Our party packages are bursting with activities for kids in an environment that is fun, safe, and truly unique. Choose from a wide variety of age-appropriate themes for kids ages 3 and up. Explore our package options at ackermansfc.com/birthday-parties. For more information and to book your party, email sgallagher@gepark.org.

Interested in hosting your birthday party in our new gymnastics center? For more information and to book your party, email ntazelaar@gepark.org.



Glen Ellyn Park District scholarship program

Parks and Activities for Everyone

The scholarship program is available to all Glen Ellyn Park District residents that qualify. Scholarship funds can be used for non-contractual camps and classes, pool passes, trips, preschool, fitness, athletics, etc., where fees are required. Funds are not eligible for equipment purchases or rental fees. Residents who qualify are eligible to receive up to \$400 maximum per person per calendar year (January 1-December 31) based on need and availability of funds.

Applicants must be able to provide proof of residency and income as defined on the application. Copies of the application are available at gepark.org/financial-aid or by visiting the Spring Avenue (185 Spring Avenue) or Main Street (501 Hill Avenue) Recreation Centers.

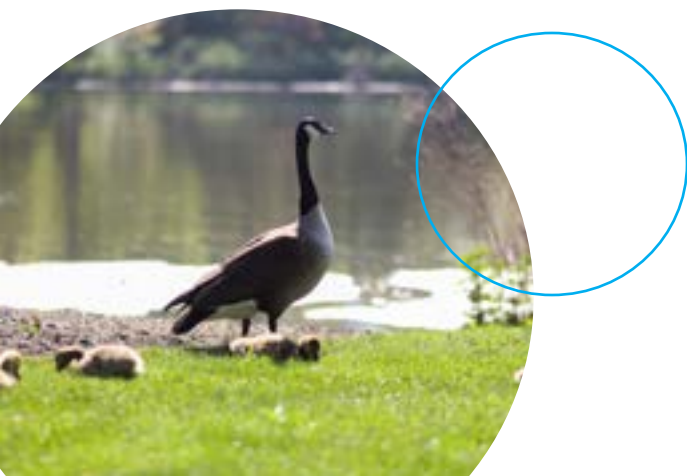
A completed application form along with copies of supporting documents must be returned in person or mailed to: Scholarship Program, Glen Ellyn Park District, 185 Spring Avenue, Glen Ellyn, IL 60137. Please allow up to 3 weeks for the application process. Applicants will be notified by letter or phone of the decision made concerning the scholarship. If you have questions, email scholarships@gepark.org.

Parques y Actividades para Todos

El programa de becas está disponible para todos los residentes/habitantes del Distrito de Parques de Glen Ellyn que cumplan los requisitos necesarios. Los fondos de la beca pueden ser usados para programas con costo, como los campamentos y clases organizadas por el Distrito de Parques, pases para la alberca, paseos, escuela preescolar, el gimnasio, programas atléticos, y más. Los fondos de beca no son elegibles para la compra o renta de equipo. Los residentes/habitantes y estudiantes que cumplan los requisitos son elegibles a recibir hasta un máximo de \$400 dólares por persona por año calendario (1° de enero - 31 de diciembre). Todo esto basado en la necesidad y disponibilidad de los fondos de la beca.

Los aplicantes deberán proveer pruebas de ingresos y de que habitan/residen dentro de la cobertura del Distrito de Parques de Glen Ellyn como está definido en la aplicación. La aplicación se puede encontrar en gepark.org/financial-aid o puede pedir una copia en los centros de recreación de Spring Avenue (185 Spring Avenue) o Main Street (501 Hill Avenue). Se debe entregar la aplicación completada en su totalidad junto con la copias de los documentos pedidos en la aplicación, ya sea en persona o por correo al: Scholarship Program, Glen Ellyn Park District, 185 Spring Avenue, Glen Ellyn, IL 60137.

El proceso de aplicación puede durar hasta tres semanas. Los aplicantes se notificarán por medio de una carta o una llamada telefónica con la decisión tomada sobre la beca. En caso de preguntas, favor de llamar al 630-858-2462.



The Fun Starts Here



Community-Based Recreational Programs and Inclusion Services For Park District Programs

WDSRA RECREATIONAL & SOCIAL PROGRAMS: IN-PERSON & VIRTUAL

WDSRA provides fun, engaging recreational and social programs, trips, and special events for children, teens, and adults with special needs. Programs are structured to allow everyone to participate at their own ability level. Through WDSRA each individual has the opportunity to grow personally, connect with their community and discover their potential.

- Sports
- Special Olympics
- Music and Dance
- Art and Drama
- Bowling
- Social Clubs
- Special Events
- Adaptive Sports
- Overnight Outings
- Weeklong Trips
- And much more!

INCLUSION SERVICES

Inclusion Services are designed to provide the least restrictive environment while providing the maximum opportunity to participate in regular park programs. There is no charge for WDSRA support. To register for services, simply indicate that special accommodations are needed on the park district registration form. Two-week advance notice is requested for inclusion support.

WE'RE HIRING
Join our team
BE A PART OF THE FUN!

Flexibility. Training. Choice.
We are looking for people who are optimistic and enthusiastic.

For details visit www.wdsra.com-Join Our Team.

¡La Diversión Comienza Aquí!



Programas Recreacionales Comunitarios y Servicios de Inclusión para Programas del Distrito de Parques

PROGRAMAS RECREACIONALES Y SOCIALES DE WDSRA EN PERSONA Y VIRTUALES:

WDSRA provee diversión, proveyendo programas recreacionales y sociales, viajes, y eventos especiales para niños, adolescentes, y adultos con necesidades especiales. Los programas están estructurados para permitir que todos participen en su propio nivel de habilidad. A través de WDSRA cada individuo tiene la oportunidad de crecer personalmente, conectar con su comunidad y descubrir su potencial.

- Deportes
- Olimpiadas Especiales
- Música y Baile
- Arte y Drama
- Bolos
- Clubes Sociales
- Eventos Especiales
- Deportes Adaptables
- Salidas con Estadía Nocturna
- Viajes de Fin de Semana
- ¡Y mucho más!

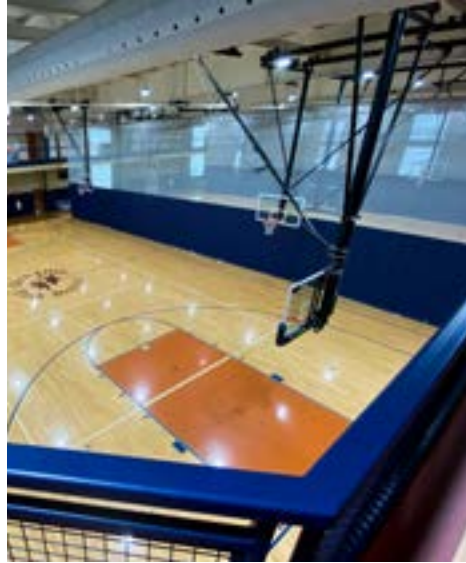
SERVICIOS DE INCLUSIÓN

Los Servicios de Inclusión están diseñados para proveer el menor entorno restrictivo a la misma vez que provee la máxima oportunidad de participar en programas regulares del parque. No hay costo por el apoyo de servicios de inclusión de WDSRA. Para registrarse para estos servicios, simplemente indique que acomodaciones especiales son necesarias en la forma de registración del distrito de parques. Se necesita un aviso con dos semanas de anticipación requiriendo el apoyo de servicios de inclusión.



rentals

Planning your next big event? We offer a wide variety of affordable indoor and outdoor venues. Deposits may be required for some rentals. Space is available on a first-come, first-served basis.



athletic fields

The Glen Ellyn Park District has fields available for soccer, baseball or softball: Ackerman Park, 800 St. Charles Road; Village Green, 130 S. Lambert Road; or Newton Park, 707 Fairview Avenue.

Village Green & Newton Parks:
(630) 942-7290

Ackerman Park:
Softball Fields: (630) 942-7288
Synthetic Turf Field: (630) 317-0134

ackerman sfc & civic center

Ackerman SFC: 800 St. Charles Road, Glen Ellyn

Civic Center: 535 Duane Street, Glen Ellyn

Ackerman SFC has three full-size basketball courts, an indoor artificial turf field, fitness studios, multi-purpose room, and four batting cages available to rent for practices, games, parties and more. The facility also features an outdoor sand volleyball court, outdoor turf field, and Civic Center gymnasium at the Village of Glen Ellyn facility.

Contact: Brad Thomas at bthomas@gepark.org or (630) 317-0134



spring avenue recreation center

185 Spring Avenue, Glen Ellyn

Spring Avenue Recreation Center can accommodate a variety of events. The craft lab (up to 40 people) is available to rent. **Contact:** Anastasia Aubie at aaubie@gepark.org

main street recreation center

501 Hill Avenue, Glen Ellyn

Conveniently located near downtown Glen Ellyn, the Main Street Recreation Center offers rental options for various spaces, including single classrooms (up to 30 people), double classrooms (up to 50 people), and an elementary-sized gymnasium. **Contact:** Katy Speck at kspeck@gepark.org

sunset pool

483 Fairview Avenue, Glen Ellyn

Private pool rentals are perfect for picnics, neighborhood parties, birthdays, group outings, and more. The pool is available to rent from 7:30pm-9pm from early June through late August. **Contact:** Lisa Semetko at lsemetko@gepark.org.



maryknoll clubhouse party room

845 Pershing Avenue, Glen Ellyn

Enjoy a gathering with friends, family, and co-workers. Room rental includes tables and chairs. Renter may bring in own food, and alcohol is permitted with a liability contract. Maximum number of guests is 50. Room size is 25' x 40'.

maryknoll park pavilion & splash shelter

845 Pershing Avenue, Glen Ellyn

Two covered outdoor venues are available to rent. The Pavilion can accommodate up to 50 guests and the Splash Shelter can accommodate up to 35. Renters receive special discounts on rounds of mini golf.

maryknoll splash park

845 Pershing Avenue, Glen Ellyn

Rental includes private use of the splash park for groups of 50 or less outside of normal business hours. Available June through September (no rentals accepted for May 26, July 4, or September 1).

Contact: Lisa Semetko at lsemetko@gepark.org for Maryknoll Park rentals.



Boathouse

Lake Ellyn

645 Lenox Road, Glen Ellyn

Located just 25 miles from downtown Chicago, this unique landmark house was built in 1937 as a community facility and was fully restored to its historic beauty in 2016. Beautifully placed along Lake Ellyn, the Boathouse has been home to numerous wedding ceremonies, receptions, anniversary parties, birthdays, and more.

The facility is available for rent from February through December. To inquire about availability and rental rates for 2025, please reach out to our team.

NOW BOOKING

Email leboathouse@gepark.org for more details.

SCHOLARSHIPS. PRESERVATION. IMPROVEMENT



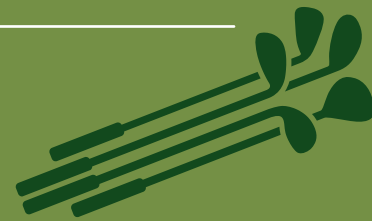
Glen Ellyn Parks Foundation

Last year, we provided over \$65,000 in scholarship support to residents participating in Park District programs and activities. Glen Ellyn Parks Foundation is funded by your donations and fees for Foundation events. We need your help to ensure that all residents will have the opportunity to participate, regardless of economic situation.

- You can make a child’s dream of playing soccer, football, attending summer camp or dancing on stage a reality.
- You can help ensure the sustainability of our parks, trails, and green spaces.
- You can help provide inclusion and make the joy of participating in recreational activities a possibility for everyone in Glen Ellyn.

Founded in 2015, the Glen Ellyn Parks Foundation is a 501(c)3 charitable organization that raises funds through community partnerships, individual donations, and annual fundraising events to support the scholarship program, preservation of open land space, and improvements to existing assets of Glen Ellyn Park District.

[Click here to donate »](#)



Putts for Parks Mini Golf Tournament Fundraiser

Saturday, May 17 • 4-6pm

Tee off with family and friends as you play mini golf for good to benefit scholarships, preservation and improvements at Glen Ellyn Park District. Featuring fun prizes, raffles and silent auction items, admission includes soft-drinks, snacks and pizza. (ss)

Holes & Knolls

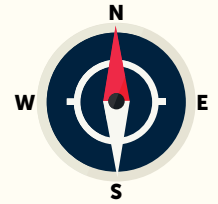
845 Pershing Avenue, Glen Ellyn

\$25 per person, all ages

Children must be accompanied by an adult

[Register here »](#)

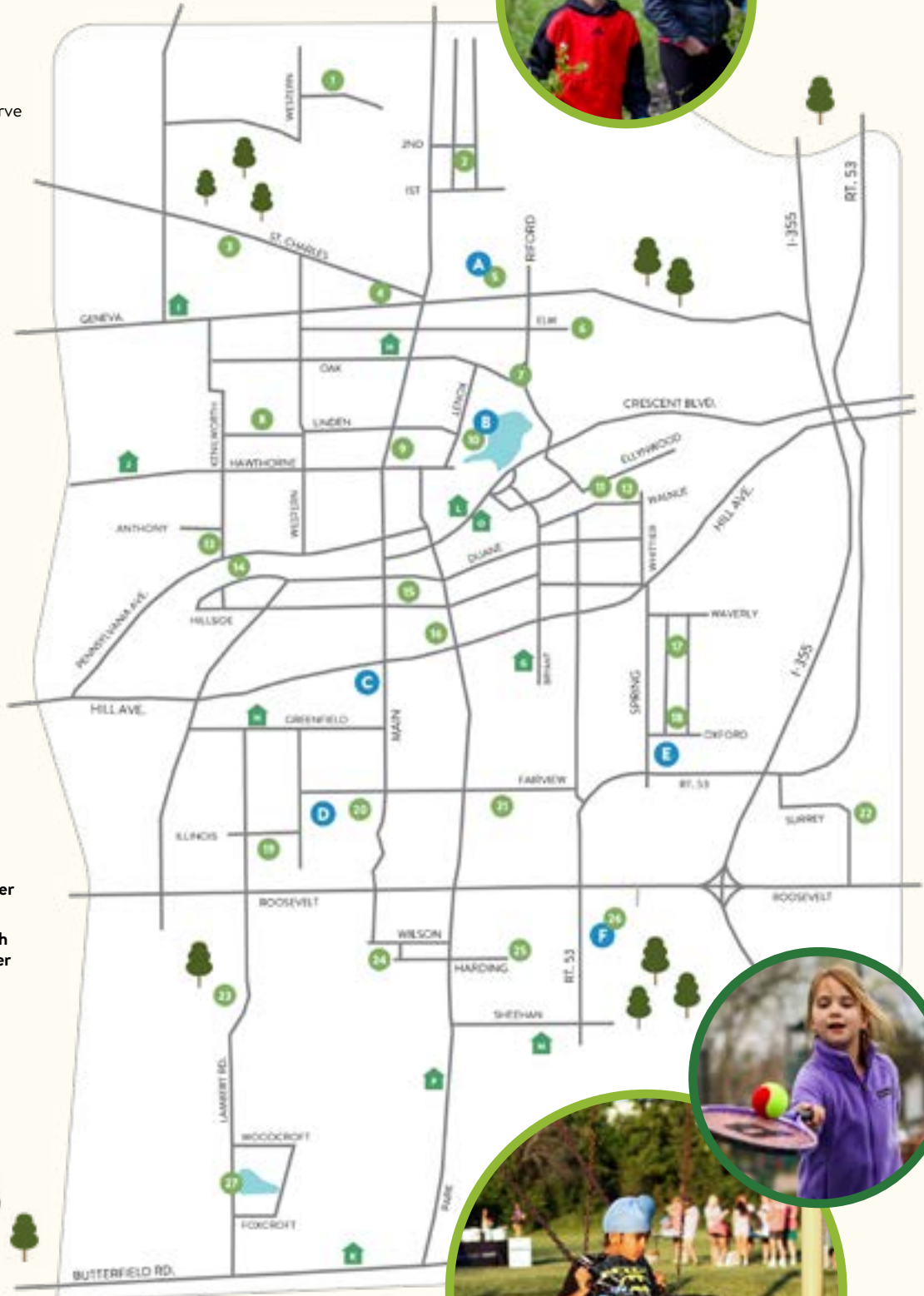
explore *Your* parks



parks



- 1 Greenbriar Park
- 2 Spalding Park
- 3 Churchill Park
- 4 Stacy Park
- 5 Ackerman Park
- 6 George Ball Park
- 7 Joseph Sam Perry Nature Preserve
- 8 Babcock Grove Park
- 9 Benjamin Gault Bird Sanctuary
- 10 Lake Ellyn Park
- 11 Ellynwood Nature Preserve
- 12 Walnut Glen Park
- 13 Frank Johnson Center
- 14 Danby Park
- 15 Prairie Path Park
- 16 Pfuetze Park
- 17 Glen Oak Park
- 18 Marie Ulhorn/President's Park
- 19 Glen Ellyn Manor Park
- 20 Sunset Park
- 21 Newton Park
- 22 Surrey Park
- 23 Village Green Park
- 24 Co-Op Park
- 25 Panfish Playground
- 26 Maryknoll Park
- 27 Lake Foxcroft Park



facilities

- A Ackerman SFC**
800 St. Charles Road
- B Lake Ellyn Boathouse**
645 Lenox Road
- C Main Street Recreation Center**
501 Hill Avenue
- D Sunset Pool**
483 Fairview Avenue
- E Spring Avenue Recreation Center**
185 Spring Avenue
- F Holes & Knolls, Maryknoll Splash Park, and Platform Tennis Center**
845 Pershing Road

schools

- G** Ben Franklin School
- H** Forest Glen School
- I** Churchill School
- J** Hadley Junior High
- K** Glenbard South
- L** Glenbard West
- M** Glen Crest
- N** Lincoln School
- O** Memorial Field
- P** Park View School

Registration Office





park features

• Denotes also lined for Pickleball

		Walking Paths/Trail	Playground	Baseball/Softball Field	Basketball Court	Tennis Court (Hard Court)	Pickleball Court	Platform Tennis	Sand Volleyball Court	Synthetic Turf Athletic Field	Open Play Area/Grass Fields	Outdoor Fitness Equipment	Picnic Shelter	Outdoor Pool	Fishing Pier	Splash Park	Mini Golf	Disc Golf	Skate Park	Ice Skating	Sled Hill
Ackerman Park	800 St. Charles Rd.	•	•	•					•	•	•	•									
Babcock Grove Park	324 Linden St.		•								•										
Churchill Park	271 St. Charles Rd.	•											•								
Co-Op Park	515 Wilson Ave.		•								•										
Danby Park	280 Duane St.	•	•								•										
Ellynwood Preserve	801 Ellynwood Dr.																				
Benjamin Gault	625 N. Main St.	•																			
George Ball Park	801 Elm St.					•					•		•								
Glen Ellyn Manor Park	375 Illinois St.	•	•								•										
Glen Oak Park	350 Woodstock Ave.		•								•										
Greenbriar Park	430 Second Place Glendale Heights	•	•								•		•								
Frank Johnson Center	490 Kenilworth Ave.		•								•										
Lake Ellyn Park	645 Lenox Rd.	•	•								•				•						•
Lake Foxcroft Park	2S540 Lambert Rd.	•	•								•		•		•						•
Main Street Rec. Ctr.	501 Hill Ave.		•		•						•										
Maryknoll Park	845 Pershing Ave.	•	•					•			•		•			•	•	•			
Newton Park	707 Fairview Ave.		•	•	•	•				•	•		•						•	•	•
Panfish Playground	Maintained by GEPD		•								•										
Joseph Sam Perry Preserve	735 Grand Ave.																				
Pfuetze Park	400 N. Park Blvd.										•										
Prairie Path Park	565 Steward Ave.																				
President's Park	265 Cumnor		•								•										
Spalding Park	22W325 2nd St.		•								•		•								
Spring Avenue Rec. Ctr.	185 Spring Ave.										•										
Stacy Park	50 Geneva Rd.		•		•						•		•								•
Sunset Park	483 Fairview Ave.		•			•					•			•							
Surrey Park	95 Surrey Dr.		•		•						•										
Village Green Park	130 S. Lambert Rd.	•	•	•	•	•	•				•		•			•					
Walnut Glen Park	860 Walnut St.		•																		

district policies

DEFINITION OF RESIDENCY

Anyone living within the geographic boundaries of the Glen Ellyn Park District is considered a resident. It's important to note that our boundaries may not align with the Village of Glen Ellyn. Residents contribute financially to the operation of the park system through property taxes. To compensate for the property tax disparity, the District charges nonresidents a higher fee for activities. If you reside in Glen Ellyn but do not pay property taxes to any park district, you are eligible for the Nonresident Household Membership.

The fastest way to determine your resident status is by checking your property tax bill, which will specify the park district you pay taxes to. If you need assistance, please call (630) 942-7280 or email registration@gepark.org.

WAIVERS OF LIABILITY

To participate in any Glen Ellyn Park District activity, you must sign a waiver releasing the Park District of any liability.

ACTIVITY CANCELLATIONS/CHANGES

The Glen Ellyn Park District reserves the right to cancel, postpone or combine activities, or change instructors. If insufficient enrollment causes an activity to be canceled, notification will be given 7 days in advance, and full tuition refunded. For weather-related cancellations, please visit gepark.org/hotline.

REFUNDS / WITHDRAWALS

Refund requests must be submitted by calling (630) 942-7280, emailing registration@gepark.org, or completing our Refund Request Form at gepark.org/refunds. Withdrawals before the start of an activity will be subject to a service charge of at least \$5.00. Refunds for moving, injury/illness, or schedule changes will be prorated based on the date of the refund request. Some activities may have separate refund policies. Refunds can take up to 30 days.

COMMITMENT TO QUALITY

The Park District aims to foster both first-time and repeat participation by implementing a refund policy featuring a satisfaction guarantee. This unique refund policy serves as a valuable mechanism for receiving timely feedback on any dissatisfaction with our services, enabling us to take prompt action to enhance the overall experience. If you find yourself unsatisfied, simply inform us, and we will offer one of the following options: inviting you to repeat the activity at no charge, providing a credit applicable to another activity, or issuing a full refund. Our guarantee hinges on fulfilling our commitment to meet the published expectations for the service you've utilized. A refund will be granted if your dissatisfaction is attributed to circumstances under the Park District's control. Requests for these options must be submitted before the activity's midpoint or within two weeks of a single meeting activity, in writing, and returned to either the Spring Avenue Recreation Center or the Main Street Recreation Center. Please note that the Satisfaction Guarantee does not apply to trips, special events with prepaid admissions and tickets, and athletic activities where equipment has already been ordered.

ACCOMMODATION FOR PERSONS WITH DISABILITIES:

Persons with disabilities are encouraged to contact the Park District at (630) 942-7280 about special accommodations needed for the enjoyment of Park District activities.

FEE ASSISTANCE AND SCHOLARSHIP PROGRAM

The Glen Ellyn Park District recognizes there are community residents who may suffer economic setbacks that might preclude their participation in Glen Ellyn Park District activities. The scholarship, or financial aid, program is available to all Glen Ellyn Park District residents that qualify.

Scholarship funds can be used for non-contractual camps and activities, pool passes, trips, preschool, fitness, athletics, etc., where fees are required. Funds are not eligible for equipment purchases or rental fees. Residents who qualify are eligible to receive up to \$400 maximum per person per calendar year (January 1-December 31) based on need and availability of funds.

Applicants must be able to provide proof of residency and income as defined on the application. Copies of the application are available at gepark.org/financial-aid or by visiting the Spring Avenue (185 Spring Avenue) or Main Street (501 Hill Avenue) Recreation Centers. A completed application form along with copies of supporting documents must be returned in person or mailed to: Scholarship Program, Glen Ellyn Park District, 185 Spring Avenue, Glen Ellyn, IL 60137. Please allow up to 3 weeks for the application process. Applicants will be notified by letter or phone of the decision made concerning the scholarship. If you have questions, email scholarships@gepark.org.

GLEN ELLYN PARK DISTRICT AND THE ADA

The Americans with Disabilities Act (ADA) took effect in January 1990 and the Glen Ellyn Park District complies with the legislation's purpose which prohibits discrimination on the basis of a disability. The Glen Ellyn Park District will make reasonable accommodations in recreation activities to enable participation by an individual with a disability that meets essential eligibility requirements for that leisure activity and facility. If you have questions about the Glen Ellyn District's commitment regarding the ADA policy or you believe you have been unfairly discriminated against by the Park District, please contact Stacey Lim at slim@gepark.org or (630) 942-7275. Those who use the Telecommunications Device for the deaf may reach the Park District by calling the Illinois Relay Line at (800) 526-0844.

BEHAVIOR POLICY

All individuals participating or volunteering in a Park District activity or activities, attending a class or event, or using District facilities or property are expected to exhibit appropriate behavior at all times and adhere to the Glen Ellyn Park District Behavior Code of Conduct. A copy of the Behavior Code of Conduct can be found at gepark.org. The failure to follow the Behavior Code of Conduct, or activity or facility rules, may result in removal of the participant or guest from the activity, event, park or facility.

PETS AT EVENTS

The Glen Ellyn Park District asks that everyone please exercise good judgment and leave pets at home when attending events that draw large crowds. Please show respect for other people, yourself and your pet by helping the Park District maintain a safe and healthy environment where all people have the opportunity to participate and enjoy themselves.

NON-DISCRIMINATION STATEMENT

The Glen Ellyn Park District does not discriminate on the basis of race, color, religion, gender, sexual orientation, age, national origin, marital status, veteran status, disability or any other legally protected characteristic either through its employment practices, the operation of its activities and services, or through its relationship with vendors and other business providers.

INSURANCE

The Glen Ellyn Park District does not provide medical insurance coverage for individuals who participate in our activities or use our facilities. To do so would make activities and user fees cost prohibitive.

ADULT'S CODE OF ETHICS

- I will encourage good sportsmanship by demonstrating positive support for players, coaches, and officials at every game and practice.
- I will place the emotional and physical well-being of my child ahead of my personal desire to win.
- I will insist that my child play in a safe and healthy environment.
- I will require that my child's coach be trained in the responsibilities of being a youth sports coach.
- I will remember that the game is for youth - not adults.
- I will do my very best to make youth sports fun for my child.
- I will ask my child to treat other players, coaches, and officials with respect regardless of race, gender, creed, or ability.
- I agree with these rules and understand that the Glen Ellyn Park District Associations have adopted a Zero-Tolerance Policy and that not abiding by these rules may restrict me from attending future games and practices.

NOTICE OF POSSIBLE CHANGES IN THE PLAYBOOK LISTINGS

The policies, procedures, requirements, activities, fees and facility availability contained in this brochure, represent Park District activities and policies at the time of publication. At times, changes in activities and policies are necessary or desirable after the publication of this guide, but prior to the commencement of activities or facility operations. In order to provide the best services, activities and facilities to our customers, the Glen Ellyn Park District reserves the right to add, change, modify or delete any activity information or policies after they have been published. We will attempt to make a reasonable effort to provide prompt notice of any changes in the information provided, but the extent of the notification or its timeliness can not be guaranteed. We apologize for any inconvenience; your understanding and cooperation are appreciated.

PHOTO & VIDEO POLICY

Photos and video footage are periodically taken of people participating in a Park District program or activity, attending a class or event, or using District facilities or property. Please be aware that by registering for an activity or class, participating in an activity, attending an event, or using District facilities or property, you authorize the District to use these photos and video footage for promotional purposes in District publications, advertising, marketing materials, brochures, event flyers, social media (including Facebook, YouTube, Instagram, X (formerly Twitter), and other social media sites operated by the District), and the District's website without additional prior notice or permission and without any compensation to you. All photos and videos are property of the District. If you do not want a picture taken, please tell our photographer.