

GLEN ELLYN PARK DISTRICT

summer camp guide

2025



GLEN ELLYN
PARK DISTRICT

Registration
begins Saturday,
February 1 *at* 8am

  [gepark.org](https://www.gepark.org)



we're here to help!

Staff initials follow the activity description for which they are responsible.

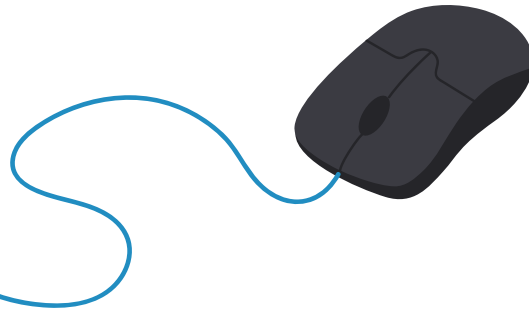
Website gepark.org

Closure/Cancellation Hotline gepark.org/hotline



Executive Director's Office			
Executive Director	Dave Thommes	dthommes@gepark.org	-
Board Secretary & Directors' Assistant	Kimberly Dikker	kdikker@gepark.org	(kd)
Finance & Personnel Department			
Deputy Executive Director	Nick Cinquegrani	ncinquegrani@gepark.org	(nc)
Human Resources & Risk Manager	Lynn Wiltfong	lwiltfong@gepark.org	(lw)
Accounting Manager	Cathy Yocum	cyocum@gepark.org	(cy)
Recreation Department			
Director of Recreation & Facilities	Stacey Lim	slim@gepark.org	(sl)
Superintendent of Athletics	Clint Babicz	cbabicz@gepark.org	(cb)
Superintendent of Recreation Services	David MacDonald	dmacdonald@gepark.org	(dm)
Manager of Athletics	Dan Tripp	dtripp@gepark.org	(dt)
Manager of Cultural Arts, Camps & Seniors	Anastasia Aubie	aaubie@gepark.org	(aa)
Manager of Soccer Operations	Darshan Addanki	daddanki@gepark.org	(da)
Manager of Early Childhood Services	Katy Speck	kspeck@gepark.org	(ks)
Special Facilities Manager	Lisa Semetko	lsemetko@gepark.org	(ls)
Manager of Racquet Sports	Mark Cunnington	mcunnington@gepark.org	(mc)
Facility Manager of Ackerman SFC	Brad Thomas	bthomas@gepark.org	(bt)
Asst. Facility Manager of Ackerman SFC	Rebecca Brush	rbrush@gepark.org	(rb)
Asst. Facility Manager of Ackerman SFC	Jay Diener	jdiener@gepark.org	(jd)
Asst. Facility Manager of Ackerman SFC	Sean Gallagher	sgallagher@gepark.org	(sg)
Registration & Guest Services Manager	Koshie Mills	kmills@gepark.org	(km)
Parks & Planning Department			
Director of Planning and Natural Resources	Nathan Troia	ntroia@gepark.org	-
Superintendent of Parks & Facilities Operations	Scott Norman	snorman@gepark.org	(sn)
Downtown Park Events & Sponsorship Manager	Susan Smentek	ssmentek@gepark.org	(ss)
Facility Maintenance Specialist	Paul Pitts	ppitts@gepark.org	(pp)
Manager of Natural Areas and Outdoor Education	Chris Gutmann	cgutmann@gepark.org	(cg)
Environmental Outreach Specialist	Laurie Bellmar	lbellmar@gepark.org	(lb)
Marketing Department			
Superintendent of Marketing & Communications	Courtney OKray	cokray@gepark.org	(co)

how to register



the fastest way to register is online.

For registration assistance, call our registration offices at (630) 942-7280 or email registration@gepark.org.

first time registering?

You can create an account online at gepark.org/register or visit Spring Avenue Recreation Center, Main Street Recreation Center, or Ackerman Sports and Fitness Center during registration office hours and Park District staff will assist you. You may be asked to provide proof of residency for all household members being added to the account.

already have an account?

Visit anc.apm.activecommunities.com/gepark/home to access the online registration portal directly, or go to gepark.org and click on the register button. Log in. Once logged in, you can go to My Account by clicking your name. Here, you can update your household information, check your purchase history, print your childcare tax receipt and other reports, or change your login information. Note: You cannot withdraw from or transfer an activity, update a family member's birth date, or change your home address.

locked out of your account?

Account lockouts happen when you incorrectly enter your password too many times or if you have past due fees. To unlock your account, please call (630) 942-7280 or email registration@gepark.org during registration office hours.

activity codes

The series of numbers beneath each activity description corresponds to that activity session. Please use this code when registering.

minimums and maximums

Each activity and activity session has a set minimum and maximum number of participants based on providing quality instruction, space availability, supplies, number of instructors, and other factors. For some activities, we may be able to accommodate the wait list or add an extra session, while we may not be able to do so for others. Activities may reach the maximum prior to the registration deadline, if indicated. Activities not meeting the minimum registration may be canceled, and patrons will be notified.

fee assistance/scholarship program

Financial assistance is available to all Glen Ellyn Park District residents that qualify. Funds can be used toward the fees of activities, events, and memberships. For more details, visit gepark.org/financial-aid.

camp registration start dates and times

residents (in district):

Saturday, February 1, 2025 at 8am

nonresidents (out of district):

Saturday, February 8, 2025 at 8am



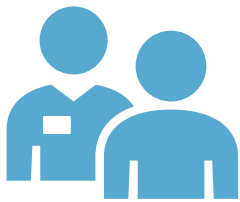
three easy ways to register

Registration is first-come, first-served.
Here are the ways you can register:



Online or Through This Playbook

Click the activity code in the digital Playbook. Or, you can visit gepark.org/register to browse and register for activities.



In Person or Drop-Off Form

Register in-person or drop-off your form at Spring Avenue Recreation Center, Main Street Recreation Center, and Ackerman Sports and Fitness Center during registration office hours.

Visit gepark.org to check for any special hours.



	Spring Avenue Recreation Center 185 Spring Ave.	Main Street Recreation Center 501 Hill Ave.	Ackerman Sports & Fitness Center 800 St. Charles Rd.
Monday	8:30am-5pm	8:30am-8pm	8:30am-9pm
Tuesday	8:30am-5pm	8:30am-8pm	8:30am-9pm
Wednesday	8:30am-7pm	8:30am-8pm	8:30am-9pm
Thursday	8:30am-7pm	8:30am-8pm	8:30am-9pm
Friday	8:30am-5pm	8:30am-5pm	8:30am-9pm
Saturday	9am-12pm	9am-12pm	7am-7pm
Sunday	Closed	Closed	7am-7pm

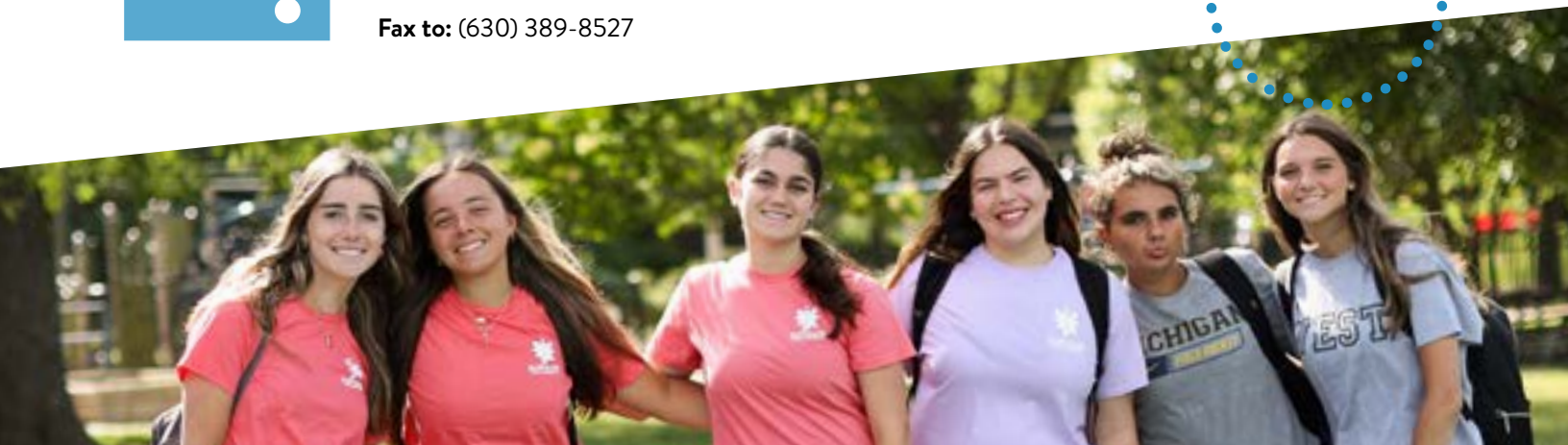


Mail/Fax

Mail your form to:

Glen Ellyn Park District, Registration
185 Spring Avenue Glen Ellyn, IL 60137

Fax to: (630) 389-8527





frequently asked questions

am I considered a resident (in district) or a nonresident (out of district)?

To determine the Park District in which you reside, please consult your tax bills, or call or email our Registration Office. Please note that Glen Ellyn Park District boundaries do not align with Village of Glen Ellyn boundaries.

which payment methods are accepted?

We accept Visa, MasterCard, Discover and American Express for online, in-person, mail, and fax registrations. For in-person registrations, we also accept checks made payable to the Glen Ellyn Park District as well as cash.

do you make age exceptions for events and programs?

If you would like to request an age exception for your child, please call (630) 942-7280 or email registration@gepark.org during regular registration office hours. If approved by the supervisor, you must register for the class in person at the Spring Avenue or Main Street Recreation Centers. Online registration with an age exception is not available.

how do I withdraw from an activity or get a refund?

Refund requests must be submitted by calling (630) 942-7280, emailing registration@gepark.org, or completing our Refund Request Form at gepark.org/refund. Cancellations and withdrawals cannot be completed through the online registration portal. Please note that a service charge of \$5 or more will apply to all cancellations, withdrawals, or refunds, and that some activities, events, and services are non-refundable.

how do I get on the waitlist for a class?

On the activity's online registration page, click on '+ Waiting List' and follow the on-screen instructions. There is no fee to join the waitlist. If a spot becomes available, we will contact you for payment. If we are unable to reach you within 24 hours, we will move on to the next person on the list. Placing your name on the waiting list is recommended, but it does not guarantee admission into the activity.

what is ePACT?

ePACT is a secure health and safety platform used by several Glen Ellyn Park District camps to collect important emergency contact and medical information electronically.

stay informed

park district hotline

Stay informed about activity/event cancellations or facility closures due to adverse weather or other factors by utilizing the Glen Ellyn Park District's hotline, powered by Rainout Line, at gepark.org/hotline.

subscribe to our e-newsletter

Receive the most up-to-date info on activities, events, and more. Sign up at gepark.org/enews.

follow us on social media

@glenellynparks on Facebook, Instagram, and X (formerly Twitter).

looking for even more fun?

Activities are added throughout the year and may not be featured at the time of publication. Visit gepark.org/register to explore additional offerings.

abbreviation key

R: Resident
 NR: Nonresident
 M: Member
 NM: Non-member

GLEN ELLYN PARK DISTRICT Hotline (Rainout Line)

Stay informed about program/event cancellations or facility closures due to adverse weather or other factors by utilizing the Glen Ellyn Park District's hotline, powered by Rainout Line.

Scan Me



Positively Play - 2.5 Years

Age 2.5

The summer months provide a lot of time for play! Have your child gear up for preschool while enjoying a fun-filled summer camp experience. Children will explore crafts, songs and stories in a fun social environment that fosters creativity. The activities will vary from session-to-session. Emergency forms must be completed online through ePACT. Must meet the age requirement by September 1, 2025. Location: Spring Avenue Recreation Center. No camp from 7/3-7/4. (ks)

#/Link	Day	Date	Time	R/NR
135367	M,W	6/9-6/18	9am-11am	\$88/\$132
135368	Tu,Th	6/10-6/19	9am-11am	\$88/\$132
135369	M,W	6/23-7/2	9am-11am	\$88/\$132
135370	Tu,Th	6/24-7/1	9am-11am	\$66/\$99
135371	M,W	7/7-7/16	9am-11am	\$88/\$132
135372	Tu,Th	7/8-7/17	9am-11am	\$88/\$132
135373	M,W	7/21-7/30	9am-11am	\$88/\$132
135374	Tu,Th	7/22-7/31	9am-11am	\$88/\$132

Positively Play - 3 Years

Age 3

The summer months provide a lot of time to play and explore! Preschool summer camp provides an opportunity to participate in a fun-filled camp while experiencing a little bit of Preschool. Children will explore art, crafts, songs, stories and more in a fun social environment that fosters creativity. The activities will vary from session-to-session, so your child will not repeat a theme. Emergency forms must be completed online through ePACT. Must meet the age requirement by September 1, 2025. Location: Main Street Recreation Center. No camp from 7/3-7/4. (ks)

#/Link	Day	Date	Time	R/NR
135375	M,W	6/9-6/18	9am-11:30am	\$110/\$165
135376	Tu,Th	6/10-6/19	9am-11:30am	\$110/\$165
135377	M,W	6/23-7/2	9am-11:30am	\$110/\$165
135378	Tu,Th	6/24-7/1	9am-11:30am	\$83/\$124
135379	M,W	7/7-7/16	9am-11:30am	\$110/\$165
135380	Tu,Th	7/8-7/17	9am-11:30am	\$110/\$165
135381	M,W	7/21-7/30	9am-11:30am	\$110/\$165
135382	Tu,Th	7/22-7/31	9am-11:30am	\$110/\$165

Positively Play - 4 Years

Age 4

The summer months provide a lot of time for play! Have your child gear up for preschool while enjoying a fun-filled summer camp experience. Children will explore science, art, crafts, songs, and stories in a fun social environment that fosters creativity. The activities will vary from session-to-session, so your child will never repeat a theme. Emergency forms must be completed online through ePACT. Must meet the age requirement by September 1, 2025. Location: Main Street Recreation Center. No camp from 7/3-7/4. (ks)

#/Link	Day	Date	Time	R/NR
135383	M-Th	6/9-6/19	9am-11:30am	\$210/\$315
135387	M-Th	6/9-6/19	12:15pm-2:45pm	\$210/\$315
135384	M-Th	6/23-7/2	9am-11:30am	\$184/\$275
135388	M-Th	6/23-7/2	12:15pm-2:45pm	\$184/\$275
135385	M-Th	7/7-7/17	9am-11:30am	\$210/\$315
135389	M-Th	7/7-7/17	12:15pm-2:45pm	\$210/\$315
135386	M-Th	7/21-7/31	9am-11:30am	\$210/\$315
135390	M-Th	7/21-7/31	12:15pm-2:45pm	\$210/\$315

Kindergarten Camp

Ages 5-6

Keep your child's academic skills sharp over the summer while having fun! Campers will practice journals to upper and lower-case letters, spelling, and sight words; and incorporate addition skills. Children will do crafts, have free time, and play outside. Designed for children entering kindergarten in the fall. Must meet the age requirement by September 1, 2025. Location: Main Street Recreation Center. No camp from 7/3-7/4. (ks)

#/Link	Day	Date	Time	R/NR
135391	M-Th	6/9-6/19	9am-11:30am	\$210/\$315
135395	M-Th	6/9-6/19	12:15pm-2:45pm	\$210/\$315
135392	M-Th	6/23-7/2	9am-11:30am	\$184/\$275
135396	M-Th	6/23-7/2	12:15pm-2:45pm	\$184/\$275
135393	M-Th	7/7-7/17	9am-11:30am	\$210/\$315
135397	M-Th	7/7-7/17	12:15pm-2:45pm	\$210/\$315
135394	M-Th	7/21-7/31	9am-11:30am	\$210/\$315
135398	M-Th	7/21-7/31	12:15pm-2:45pm	\$210/\$315



Imagination Station

Ages 4-7

Campers will enjoy games, arts and crafts, and make new friends while exploring Newton Park. A great introduction to camp before moving on to full day camp, Imagination Station has exciting daily activities with a different theme each week. Drop-off and pick-up will take place at the picnic tables near the west parking lot. Emergency forms must be completed online through ePACT. In case of inclement weather, camp will be cancelled; families will be notified as soon as possible by phone or email. Must meet the age requirement by September 1, 2025. Location: Newton Park. No camp from 7/3-7/4. (ks)

#/Link	Day	Date	Time	R/NR
135337	W-F	6/4-6/6	9am-11:30am	\$90/\$135
135347	W-F	6/4-6/6	12:30pm-3pm	\$90/\$135
135338	M-F	6/9-6/13	9am-11:30am	\$150/\$225
135348	M-F	6/9-6/13	12:30pm-3pm	\$150/\$225
135339	M-F	6/16-6/20	9am-11:30am	\$150/\$225
135349	M-F	6/16-6/20	12:30pm-3pm	\$150/\$225
135340	M-F	6/23-6/27	9am-11:30am	\$150/\$225
135350	M-F	6/23-6/27	12:30pm-3pm	\$150/\$225
135341	M-W	6/30-7/2	9am-11:30am	\$90/\$135
135351	M-W	6/30-7/2	12:30pm-3pm	\$90/\$135
135342	M-F	7/7-7/11	9am-11:30am	\$150/\$225
135352	M-F	7/7-7/11	12:30pm-3pm	\$150/\$225
135343	M-F	7/14-7/18	9am-11:30am	\$150/\$225
135353	M-F	7/14-7/18	12:30pm-3pm	\$150/\$225
135344	M-F	7/21-7/25	9am-11:30am	\$150/\$225
135354	M-F	7/21-7/25	12:30pm-3pm	\$150/\$225
135345	M-F	7/28-8/1	9am-11:30am	\$150/\$225
135355	M-F	7/28-8/1	12:30pm-3pm	\$150/\$225
135346	M-F	8/4-8/8	9am-11:30am	\$150/\$225
135356	M-F	8/4-8/8	12:30pm-3pm	\$150/\$225
135358	M-F	8/11-8/15	9am-11:30am	\$150/\$225
135357	M-F	8/11-8/15	12:30pm-3pm	\$150/\$225

Safety Village

Ages 3.5-6

The Safety Village program is designed to build a foundation of safety knowledge in young children, including personal, pedestrian, home and play safety, in a fun environment. We will help develop confidence and sound decision-making abilities regarding safe practices. Children learn how to handle specific safety situations such as being approached by a stranger and how community workers help people. This program is play-based. Classroom visitors, games, crafts, music, stories, films, and role playing are a part of the Safety Village curriculum. Children will practice safe riding and street safety in our outdoor learning area. Please bring a water bottle and bike helmet to class each day. Must meet the age requirement by September 1, 2025. Location: Spring Avenue Recreation Center. No camp from 7/3-7/4. (ks)

#/Link	Day	Date	Time	R/NR
135359	M-Th	6/9-6/19	9:30am-11:30am	\$176/\$264
135363	M-Th	6/9-6/19	12:30pm-2:30pm	\$176/\$264
135360	M-Th	6/23-7/2	9:30am-11:30am	\$154/\$231
135364	M-Th	6/23-7/2	12:30pm-2:30pm	\$154/\$231
135361	M-Th	7/7-7/17	9:30am-11:30am	\$176/\$264
135365	M-Th	7/7-7/17	12:30pm-2:30pm	\$176/\$264
135362	M-Th	7/21-7/31	9:30am-11:30am	\$176/\$264
135366	M-Th	7/21-7/31	12:30pm-2:30pm	\$176/\$264

Camp Caravan

Ages 6-12

Campers will enjoy a summer packed full of exciting activities that will include games, crafts, outdoor activities, and so much more! Campers will swim over at Sunset Pool Monday through Wednesday and off-site field trips are taken every Friday. Every Thursday Camp Caravan will host weekly on-site entertainment such as magicians, bubble shows, and more. Adults who need to get to work early or stay late can take advantage of our pre-camp and/or post-camp hours. Camper forms must be completed, via ePACT, prior to your child attending camp. Camp Caravan drop-off and pick-up will always be from the Main Street Recreation Center. Late drop-off and early pick-up are not allowed unless given approval. (aa)

Intro to Camp Caravan

Ease into a summer of fun with this shorter camp week. Must meet the age requirement by September 1, 2025.

#/Link	Day	Date	Time	R/NR
135477	W-F	6/4-6/6	8:30am-3:30pm	\$188/\$262
135478	W	6/4	8:30am-3:30pm	\$65/\$95
135479	Th	6/5	8:30am-3:30pm	\$65/\$95
135480	F	6/6	8:30am-3:30pm	\$65/\$95



Camp Caravan Registration

Choose between the 3-day or 5-day full week options.

Registration will close one week prior to the start of camp. Fees will not be prorated for any missed days or vacations. Camper forms must be completed, via ePACT, prior to your child attending camp. Instructions will be sent to your email. Must meet the age requirement by September 1, 2025. Location: Main Street Recreation Center. No camp from 7/3-7/4.

#/Link	Day	Date	Time	R/NR
135164	M-F	6/9-6/13	8:30am-3:30pm	\$255/\$360
135154	Tu-Th	6/10-6/12	8:30am-3:30pm	\$188/\$262
135166	M-F	6/16-6/20	8:30am-3:30pm	\$255/\$360
135156	Tu-Th	6/17-6/19	8:30am-3:30pm	\$188/\$262
135167	M-F	6/23-6/27	8:30am-3:30pm	\$255/\$360
135157	Tu-Th	6/24-6/26	8:30am-3:30pm	\$188/\$262
135158	M-W	6/30-7/2	8:30am-3:30pm	\$188/\$262
135168	M-F	7/7-7/11	8:30am-3:30pm	\$255/\$360
135159	Tu-Th	7/8-7/10	8:30am-3:30pm	\$188/\$262
135169	M-F	7/14-7/18	8:30am-3:30pm	\$255/\$360
135160	Tu-Th	7/15-7/17	8:30am-3:30pm	\$188/\$262
135170	M-F	7/21-7/25	8:30am-3:30pm	\$255/\$360
135161	Tu-Th	7/22-7/24	8:30am-3:30pm	\$188/\$262
135171	M-F	7/28-8/1	8:30am-3:30pm	\$255/\$360
135162	Tu-Th	7/29-7/31	8:30am-3:30pm	\$188/\$262
135172	M-F	8/4-8/8	8:30am-3:30pm	\$255/\$360
135163	Tu-Th	8/5-8/7	8:30am-3:30pm	\$188/\$262
135165	M-F	8/11-8/15	8:30am-3:30pm	\$255/\$360
135155	Tu-Th	8/12-8/14	8:30am-3:30pm	\$188/\$262



Pre & Post Camp Registration

Need to extend your campers day by a few hours? Enroll in our pre or post camp options. Your child must also be registered for a 3-day or week option of Camp Caravan to register for Pre/Post camp. Pre-camp drop-off and post-camp pick-up is at Main Street Recreation Center. Must meet the age requirement by September 1, 2025. No camp from 7/3-7/4.

#/Link	Day	Date	Time	R/NR
Pre-Camp				
135187	M-F	6/9-6/13	7am-8:30am	\$60/\$85
135177	Tu-Th	6/10-6/12	7am-8:30am	\$40/\$55
135189	M-F	6/16-6/20	7am-8:30am	\$60/\$85
135179	Tu-Th	6/17-6/19	7am-8:30am	\$40/\$55
135190	M-F	6/23-6/27	7am-8:30am	\$60/\$85
135180	Tu-Th	6/24-6/26	7am-8:30am	\$40/\$55
135181	M-W	6/30-7/2	7am-8:30am	\$60/\$85
135191	M-F	7/7-7/11	7am-8:30am	\$40/\$55
135182	Tu-Th	7/8-7/10	7am-8:30am	\$40/\$55
135192	M-F	7/14-7/18	7am-8:30am	\$60/\$85
135183	Tu-Th	7/15-7/17	7am-8:30am	\$40/\$55
135193	M-F	7/21-7/25	7am-8:30am	\$60/\$85
135184	Tu-Th	7/22-7/24	7am-8:30am	\$40/\$55
135194	M-F	7/28-8/1	7am-8:30am	\$60/\$85
135185	Tu-Th	7/29-7/31	7am-8:30am	\$40/\$55
135195	M-F	8/4-8/8	7am-8:30am	\$60/\$85
135186	Tu-Th	8/5-8/7	7am-8:30am	\$40/\$55
135188	M-F	8/11-8/15	7am-8:30am	\$60/\$85
135178	Tu-Th	8/12-8/14	7am-8:30am	\$40/\$55
Post-Camp				
135244	M-F	6/9-6/13	3:30pm-6pm	\$70/\$95
135234	Tu-Th	6/10-6/12	3:30pm-6pm	\$50/\$65
135246	M-F	6/16-6/20	3:30pm-6pm	\$70/\$95
135236	Tu-Th	6/17-6/19	3:30pm-6pm	\$50/\$65
135247	M-F	6/23-6/27	3:30pm-6pm	\$70/\$95
135237	Tu-Th	6/24-6/26	3:30pm-6pm	\$50/\$65
135238	M-W	6/30-7/2	3:30pm-6pm	\$70/\$95
135248	M-F	7/7-7/11	3:30pm-6pm	\$50/\$65
135239	Tu-Th	7/8-7/10	3:30pm-6pm	\$50/\$65
135249	M-F	7/14-7/18	3:30pm-6pm	\$70/\$95
135240	Tu-Th	7/15-7/17	3:30pm-6pm	\$50/\$65
135250	M-F	7/21-7/25	3:30pm-6pm	\$70/\$95
135241	Tu-Th	7/22-7/24	3:30pm-6pm	\$50/\$65
135251	M-F	7/28-8/1	3:30pm-6pm	\$70/\$95
135242	Tu-Th	7/29-7/31	3:30pm-6pm	\$50/\$65
135252	M-F	8/4-8/8	3:30pm-6pm	\$70/\$95
135243	Tu-Th	8/5-8/7	3:30pm-6pm	\$50/\$65
135245	M-F	8/11-8/15	3:30pm-6pm	\$70/\$95
135235	Tu-Th	8/12-8/14	3:30pm-6pm	\$50/\$65

Intro to Turf & Surf Camp

Ages 9-11

Campers will enjoy the freedom of jumping on their bikes and heading out to local destinations, three to five miles in distance one way. Mondays through Fridays, campers will also swim at Sunset Pool. This program combines education and hands-on experiences to prepare you for the future weeks in Turf & Surf Camp. All campers are required to have a bike, bike lock, helmet, water bottle, backpack, sack lunch, and snacks every day. Camper forms must be completed, via ePACT, prior to your child attending camp. Instructions will be sent to your email. Registration will close one week prior to the start of camp. Must meet the age requirement by September 1, 2025. Location: Main Street Recreation Center. No camp from 7/3-7/4. (aa)

#/Link	Day	Date	Time	R/NR
Blue (Age 9)				
135253	M-F	6/9-6/13	8:45am-2:45pm	\$225/\$340
135255	M-F	6/16-6/20	8:45am-2:45pm	\$225/\$340
135256	M-F	6/23-6/27	8:45am-2:45pm	\$225/\$340
135257	M-W	6/30-7/2	8:45am-2:45pm	\$135/\$205
135258	M-F	7/7-7/11	8:45am-2:45pm	\$225/\$340
135259	M-F	7/14-7/18	8:45am-2:45pm	\$225/\$340
135260	M-F	7/21-7/25	8:45am-2:45pm	\$225/\$340
135261	M-F	7/28-8/1	8:45am-2:45pm	\$225/\$340
135262	M-F	8/4-8/8	8:45am-2:45pm	\$225/\$340
135254	M-F	8/11-8/15	8:45am-2:45pm	\$225/\$340
Purple (Age 10)				
135273	M-F	6/9-6/13	8:45am-2:45pm	\$225/\$340
135265	M-F	6/16-6/20	8:45am-2:45pm	\$225/\$340
135266	M-F	6/23-6/27	8:45am-2:45pm	\$225/\$340
135267	M-W	6/30-7/2	8:45am-2:45pm	\$135/\$205
135268	M-F	7/7-7/11	8:45am-2:45pm	\$225/\$340
135269	M-F	7/14-7/18	8:45am-2:45pm	\$225/\$340
135270	M-F	7/21-7/25	8:45am-2:45pm	\$225/\$340
135271	M-F	7/28-8/1	8:45am-2:45pm	\$225/\$340
135272	M-F	8/4-8/8	8:45am-2:45pm	\$225/\$340
135264	M-F	8/11-8/15	8:45am-2:45pm	\$225/\$340
Green (Ages 10-11)				
135283	M-F	6/9-6/13	8:45am-2:45pm	\$225/\$340
135285	M-F	6/16-6/20	8:45am-2:45pm	\$225/\$340
135286	M-F	6/23-6/27	8:45am-2:45pm	\$225/\$340
135287	M-W	6/30-7/2	8:45am-2:45pm	\$135/\$205
135288	M-F	7/7-7/11	8:45am-2:45pm	\$225/\$340
135289	M-F	7/14-7/18	8:45am-2:45pm	\$225/\$340
135290	M-F	7/21-7/25	8:45am-2:45pm	\$225/\$340
135291	M-F	7/28-8/1	8:45am-2:45pm	\$225/\$340
135292	M-F	8/4-8/8	8:45am-2:45pm	\$225/\$340
135284	M-F	8/11-8/15	8:45am-2:45pm	\$225/\$340

Turf & Surf Camp

Ages 11-13

This camp is recommended for campers who have completed Introduction to Turf & Surf Camp or previous summers of Turf & Surf Camp. This on-the-road experience combines morning activities and field trips. Mondays through Thursdays, campers will also swim at Sunset Pool. Campers should have a basic understanding of bike safety and rules of the road. Riders will be expected to travel up to six miles one way to reach their daily destination. All campers are required to have a bike, bike lock, helmet, water bottle, backpack, sack lunch, and snacks every day. Camper forms must be completed, via ePACT, prior to your child attending camp. Instructions will be sent to your email. Registration will close one week prior to the start of camp. Must meet the age requirement by September 1, 2025. Location: Spring Avenue Recreation Center. No camp from 7/3-7/4. (aa)

#/Link	Day	Date	Time	R/NR
Orange (Age 11-12)				
135293	M-F	6/9-6/13	8:45am-2:45pm	\$225/\$340
135295	M-F	6/16-6/20	8:45am-2:45pm	\$225/\$340
135296	M-F	6/23-6/27	8:45am-2:45pm	\$225/\$340
135297	M-W	6/30-7/2	8:45am-2:45pm	\$135/\$205
135298	M-F	7/7-7/11	8:45am-2:45pm	\$225/\$340
135299	M-F	7/14-7/18	8:45am-2:45pm	\$225/\$340
135300	M-F	7/21-7/25	8:45am-2:45pm	\$225/\$340
135301	M-F	7/28-8/1	8:45am-2:45pm	\$225/\$340
135302	M-F	8/4-8/8	8:45am-2:45pm	\$225/\$340
135294	M-F	8/11-8/15	8:45am-2:45pm	\$225/\$340
Red (Ages 12-13)				
135303	M-F	6/9-6/13	8:45am-2:45pm	\$225/\$340
135305	M-F	6/16-6/20	8:45am-2:45pm	\$225/\$340
135306	M-F	6/23-6/27	8:45am-2:45pm	\$225/\$340
135307	M-W	6/30-7/2	8:45am-2:45pm	\$135/\$205
135308	M-F	7/7-7/11	8:45am-2:45pm	\$225/\$340
135309	M-F	7/14-7/18	8:45am-2:45pm	\$225/\$340
135310	M-F	7/21-7/25	8:45am-2:45pm	\$225/\$340
135311	M-F	7/28-8/1	8:45am-2:45pm	\$225/\$340
135312	M-F	8/4-8/8	8:45am-2:45pm	\$225/\$340
135304	M-F	8/11-8/15	8:45am-2:45pm	\$225/\$340

Bricks 4 Kidz: LEGO® STEM - JEDI Engineering: Mission to Space Camp

Ages 5-9

Join us on an adventurous journey through space! Build a world where rebels and the dark side start epic battles. Using our proprietary LEGO® project kits and model plans, the students will use their engineering skills to build different moving models each day. We'll build motorized models that represent spacecraft from Star Wars and models related to the NASA space program. Our one-of-a-kind models incorporate beams, gears, axles, motors and battery packs. Are you a budding astronaut? An adventurer who loves space exploration. Then you'll love our space theme projects. We'll provide the bricks; all you need to bring for this adventure is your imagination. Our creative camps feature LEGO® mosaics, 3D LEGO® color kit Builds, motorized technic LEGO® projects, daily take home arts and crafts, creative free play and more. Location: Main Street Recreation Center. (ks)

#/Link	Day	Date	Time	R/NR
135399	M-F	6/9-6/13	9am-12pm	\$250/\$350
135400	M-F	8/4-8/8	1pm-4pm	\$250/\$350

Bricks 4 Kidz: LEGO® Superhero Science Camp

Ages 5-9

Can't fly? Don't have laser eyes? No problem — some of the coolest superheroes make amazing gadgets and use scientific principles to stop the bad guys and solve crimes. We'll be doing just that and more using LEGO® Bricks and some ingenuity. Campers will use our proprietary kits and model plans to build one-of-a-kind superhero creations, gadgets, vehicles and more. Whether you are a master crime-fighting builder (or even if you can fly), you'll have a blast learning, building, and playing with other superheroes-in-the-making at Bricks 4 Kidz. At Bricks 4 Kidz camps, we use LEGO bricks to build amazing worlds of fun in a variety of exciting themes that engage children in STEM-enriched activities and making new LEGO®-loving friends. Our creative camps feature LEGO® mosaics, 3D LEGO® color kit Builds, motorized technic LEGO® projects, daily take home arts and crafts, creative free play and more. Location: Main Street Recreation Center. (ks)

#/Link	Day	Date	Time	R/NR
135401	M-F	6/9-6/13	1pm-4pm	\$250/\$350

Bricks 4 Kidz: LEGO® Minecraft Adventure Camp

Ages 5-9

Experience the exciting world of Minecraft® using LEGO® bricks this summer! This fun and exciting camp takes a whole lot of LEGO® Bricks, a background in STEM, children's natural creativity, and inspiration from the popular game to build on a week of learning fun — the Bricks 4 Kidz way. From Pigs, Mooshrooms and Chickens to Mine Carts, Zombies and Skeletons, we'll explore and build different stories each day in our LEGO® Mining and Crafting world. Kids will start by crafting their shelters, mob characters, critters and tools using LEGO® bricks. Students will face new challenges each day, building models and crafting key elements from the popular Minecraft® game. Using our proprietary kits and model plans, campers will construct one-of-a-kind Minecraft® models using LEGO® bricks. Our specialized model plans incorporate beams, gears, axles, motors, battery packs and other technic LEGO® components. Location: Main Street Recreation Center. (ks)

#/Link	Day	Date	Time	R/NR
135402	M-F	6/23-6/27	9am-12pm	\$250/\$350
135403	M-F	8/4-8/8	9am-12pm	\$250/\$350

Bricks 4 Kidz: Extreme Ninjas - LEGO® Engineering Camp

Ages 5-9

Enter a world of ninjas, adventure, and LEGO® master-building! Campers will use LEGO® bricks in their adventure to master different building methods and techniques. Throughout the week we will build dojos, LEGO® ninja weapons, Ninjago spinjitzu spinning machines, vehicles and more. Campers will use our proprietary kits and model plans to build one-of-a-kind LEGO® creations. Our creative camps feature LEGO® mosaics, 3D LEGO® color kit Builds, motorized technic LEGO® machines, daily take home arts and crafts, creative free play and more. Location: Main Street Recreation Center. (ks)

#/Link	Day	Date	Time	R/NR
135404	M-F	6/23-6/27	1pm-4pm	\$250/\$350

Bricks 4 Kidz: Game On Master Builders Engineering Camp

Ages 5-9

For kids today, it's all about the world of online video games and apps. In this interactive summer camp, campers will use LEGO® Bricks to create and build different characters from their favorite video games. Themes such as Super Mario Bros, Roblox, Beyblades, Fortnite and Pokémon come to life using robots, mosaics, and 3D art, all made out of LEGO® Bricks. Don't forget classic Nintendo and SEGA themes such as Zelda, Duck Hunt, Pacman, and Sonic the Hedgehog. Each day will be a new adventure as the virtual and LEGO® worlds combine. Our creative camps feature LEGO® mosaics, 3D LEGO® color kit Builds, motorized technic LEGO® projects, daily take home arts and crafts, creative free play and more. Location: Main Street Recreation Center. (ks)

#/Link	Day	Date	Time	R/NR
135405	M-F	7/14-7/18	9am-12pm	\$250/\$350

Bricks 4 Kidz: LEGO® City Engineering & Architects Camp

Ages 5-9

Explore the structures and landscapes of a city: Campers will work in teams to design and build the city of their dreams, using LEGO® bricks. The architects may plan a road, propose a monument, design a park or school, or imagine a skyscraper. Using our proprietary kits and model plans, campers will construct one-of-a-kind LEGO® City models using LEGO® bricks. Builders will assemble motorized models of construction tools and equipment, vehicles, carnival and playground rides. Campers will also have a city museum and zoo day where they build animals and dinosaurs. Our specialized model plans incorporate beams, gears, axles, motors, battery packs and other technic LEGO® components. Learn what it takes to become a LEGO® City planner. Location: Main Street Recreation Center. (ks)

#/Link	Day	Date	Time	R/NR
135406	M-F	7/14-7/18	1pm-4pm	\$250/\$350



Discovery Duos Camp

Ages 4 and under with adult

This camp is for little ones and a caregiver. Meet for three days to explore the outdoors together. Enjoy hands-on activities that introduce nature through observations, stories, and discoveries. Adults do not need to register. Location: Churchill Park. Min/Max: 5/10 couples. (1b)

#/Link	Day	Date	Time	R/NR
134903	M-W	6/30-7/2	9am-10:30am	\$40/\$48

Fours 4 Nature Camp

Age 4

This preschool camp is just for four-year-olds. We will keep the group size small for more personal interactions. Explore the park's trails, ecosystems, plants, and animals. Stories, activities, crafts, and games will support the various topics. Location: Churchill Park. Min/Max: 6/12. (1b)

#/Link	Day	Date	Time	R/NR
134904	M-F	6/9-6/13	9am-11am	\$90/\$108
134905	M-F	6/16-6/20	9am-11am	\$90/\$108

Nature Camp (K-1st)

Grades K-1st

This hands-on program will take campers through fields, woodlands, and wetlands in search of plants, insects, reptiles, birds, and mammals. We will introduce basic ecological concepts while exploring the park's habitats. Stories, crafts, and games support the various topics. Each week includes a pond and creek day. Campers will have the opportunity to wade and dip nets in the water. Location: Churchill Park. Min/Max: 8/14. (1b)

#/Link	Day	Date	Time	R/NR
134906	M-F	6/9-6/13	9am-12pm	\$130/\$156
134907	M-F	6/16-6/20	9am-12pm	\$130/\$156
134908	M-F	6/23-6/27	9am-12pm	\$130/\$156
134909	M-F	8/4-8/8	9am-12pm	\$130/\$156

T-Rexplorers: Adventures in Paleontology – Beginner Camp

Ages 5-8

This is the perfect camp for the younger dinosaur lovers of the world. Each day, kids will get to play games, make crafts, and examine different authentic prehistoric fossils and dinosaur bones from numerous species including Triceratops and T-Rex. Kids love this adventure and won't even realize they are learning, too. Bring a water bottle and a healthy snack. We will be outdoors so dress accordingly. Location: Lake Ellyn Park. (ks)

#/Link	Day	Date	Time	R/NR
135407	M-F	7/14-7/18	9am-12pm	\$300/\$450

T-Rexplorers: Adventures in Paleontology – Ultimate Camp

Ages 8-12

This is as close as you can get to a dinosaur dig without leaving the state! Kids will love this fun and adventurous "straight from the cretaceous period" camp because of its unique exploration of dinosaur science and paleontology. Prepare to get dirty as we use the tools and skills utilized at a dig site. Each day, we'll examine different types of authentic prehistoric fossils and dinosaur bones, including Triceratops and T-Rex. Come and see the discoveries T-Rexplorers made at our recent digs, and enjoy games, crafts, and activities. Bring a water bottle and a healthy snack. We will be outdoors so dress accordingly. Location: Lake Ellyn Park. (ks)

#/Link	Day	Date	Time	R/NR
135408	M-F	7/14-7/18	1pm-4pm	\$300/\$450

Wildlife Camp

Grades 2nd-3rd

Is your child a budding zoologist? Each day we will focus on a different group of animals: mammals, birds, invertebrates, reptiles/amphibians, and a habitat helpers' day. Unique behaviors, adaptations, and interdependence among species will be emphasized as we search for and celebrate wildlife. Each week includes a pond and creek day. Campers will have the opportunity to wade and search for creatures that make a home in the water. Location: Churchill Park. Min/Max: 8/14. (1b)

#/Link	Day	Date	Time	R/NR
134910	M-F	6/23-6/27	9am-12pm	\$130/\$156
134911	M-F	7/7-7/11	9am-12pm	\$130/\$156
134912	M-F	7/14-7/18	9am-12pm	\$130/\$156

Eco-Builders Camp

Grades 4th-6th

This nature maker camp will turn the outdoors into an open-air workshop. Campers will assemble and complete a variety of hands-on projects. Some will stay at the park, helping birds and other wildlife. Others will be brought home to enjoy. We will include work to improve native habitats. In addition, campers will have time to explore, hike the trails, and become familiar with the resident plants and animals. Eco-Builders have a pond and creek day when they are able to wade and explore the aquatic ecosystems. Location: Churchill Park. Min/Max: 8/14. (1b)

#/Link	Day	Date	Time	R/NR
134913	M-F	7/7-7/11	9am-12pm	\$140/\$168
134914	M-F	7/14-7/18	9am-12pm	\$140/\$168

Survivor Camp

Grades 6th-8th

Acquire the skills and know-how to thrive outside. Begin to truly understand nature while improving self-reliance, resourcefulness, and confidence. Learn how to be good stewards of the land as you discover the interconnectedness of the natural world. Whether it's navigation, cattail weaving, knot tying, shelter building, edible plant identification, fire starting, or the always-popular fishing day at Lake Ellyn, campers will be going wild with all they learn. Location: Churchill Park. (1b)

#/Link	Day	Date	Time	R/NR
135037	M-F	7/21-7/25	9am-12pm	\$140/\$168
135038	M-F	7/28-8/1	9am-12pm	\$140/\$168



Mud Buddies Camp

Grades K-3rd

This camp highlights the creatures that live in water, mud, and soil. Campers will get their hands dirty and their feet wet as we spend two days exploring the creek and ponds. We will turn over logs, visit remote parts of the park, and provide plenty of play time. Stories, crafts, and games will support each day's outdoor education topics. Location: Churchill Park. Min/Max: 8/14. (1b)

#/Link	Day	Date	Time	R/NR
134915	M-F	7/21-7/25	9am-12pm	\$130/\$156
134916	M-F	7/28-8/1	9am-12pm	\$130/\$156

Birds and Blooms Camp

Grades 3rd-6th

Explore the dazzling world of birds and flowers. Campers will learn how to find, observe, and appreciate birds. Activities will explore birds' "superpowers" of vision and flight. We will also celebrate wildflowers through art, games, and science. We will plant flowers and participate in projects that help pollinators and important plants in the park. Campers will have a pond and creek day where they can get their feet wet, learning about aquatic plants and the birds that can be found at our ponds. Location: Churchill Park. Min/Max: 8/14. (1b)

#/Link	Day	Date	Time	R/NR
134917	M-F	8/4-8/8	9am-12pm	\$130/\$156

Sticky Fingers Cooking: Global Taste Buds Camp

Ages 4-11

Cook your way around the world in our globally inspired cooking camp. What better way to explore another culture than through its food? In this delicious camp, young chefs will cook recipes from countries all around the world and explore food history, explore customs, songs, geography, and languages associated with each recipe. Young chefs will cook and gobble up tasty, healthy cuisine from South America, Europe, Africa, and Asia. Location: Spring Avenue Recreation Center. (aa)

#/Link	Ages	Day	Date	Time	R/NR
135324	4-6	M-F	6/23-6/27	9:30am-11:30am	\$308/\$369
135325	6-11	M-F	6/23-6/27	1pm-4pm	\$462/\$555

Sticky Fingers Cooking: Kids Cooking Showdown

Ages 6-11

Young chefs will take on cooking challenges inspired by favorite cooking TV shows such as Sugar Rush, Great British Bake Off, Nailed It! and Cutthroat Kitchen. Young chefs will get their creative juices flowing in this fun and delicious cooking adventure. Location: Spring Avenue Recreation Center. (aa)

#/Link	Day	Date	Time	R/NR
135326	M-F	6/23-6/27	1pm-4pm	\$462/\$555
135328	M-F	8/11-8/15	1pm-4pm	\$462/\$555

Sticky Fingers Cooking: Basic Training Baking Boot Camp

Ages 6-11

Aspiring bakers who love to get their hands sticky in the kitchen will love this camp. Learn the basics of scratch baking from pita bread to lemon tarts to cornbread. Young chefs will love creating sweet and savory baked goods in this tasty and imaginative camp. Location: Spring Avenue Recreation Center. (aa)

#/Link	Day	Date	Time	R/NR
135319	M-F	7/14-7/18	1pm-4pm	\$462/\$555

Sticky Fingers Cooking: Cooks+Books Camp

Ages 6-11

Your child will do the chopping, grating, prepping, and cooking-oh my! And you will end up with an inspired and excited new young chef in your family and a freshly prepared meal on the table. Family meals will also become more fun and exciting; When kids get to learn about the ingredients in their recipes and have a hand in creating their food, they're much more willing to try new foods. There is a world of flavor to enjoy right now and right in your own kitchens. Location: Spring Avenue Recreation Center. (aa)

#/Link	Day	Date	Time	R/NR
135320	M-F	7/21-7/25	9:30am-11:30am	\$462/\$555
135321	M-F	7/21-7/25	1pm-4pm	\$462/\$555

Sticky Fingers Cooking: S.T.E.A.M Cooking Camp

Ages 6-11

What's especially great about cooking is that it authentically integrates all these skills in one activity. Whether you're measuring ingredients, operating an Instant Pot, stacking sushi roll ingredients, plating a meal, or scaling a recipe, you're switching among all the S.T.E.A.M. skills. And it's not just the skills you're practicing, but also the different ways of thinking. The kitchen, after all, is a place for problem-solving, innovation, creative/critical thinking, and collaboration. Location: Spring Avenue Recreation Center. (aa)

#/Link	Day	Date	Time	R/NR
135327	M-F	7/28-8/1	1pm-4pm	\$462/\$555

Sticky Fingers Cooking: Farm to Table Cooking Camp

Ages 4-11

How does our food go from ingredient to recipe to table? Explore the bounty of summer-fresh, local, colorful ingredients. Young chefs will learn about fruits and vegetables that come from the soil, vines, trees, pods, and bushes. Then, we'll whip up some delicious recipes and cultivate lifelong culinary skills. Location: Spring Avenue Recreation Center. (aa)

#/Link	Ages	Day	Date	Time	R/NR
135322	4-6	M-F	8/4-8/8	9:30am-11:30am	\$250/\$325
135323	6-11	M-F	8/4-8/8	1pm-4pm	\$390/\$425

Chess Wizards Summer Camp

Ages 6-12

Team chess games, puzzles, skill-building, and team and individual physical games are just some of the ways we integrate the whole person into our camp activities. A sample day might include exploration of a technical chess concept, fun group challenges which hone specific chess thinking patterns, a healthy snack, a mini-tournament, capture-the-flag, and blob tag. Or creating and designing your own chess piece to be used in a practice game with your new friends. After all, it's camp...we want our students to make memories that they will carry with them through the upcoming school year and beyond. Participants will receive a trophy, Chess Wizards t-shirt, folder, and a chess puzzle workbook. Bring your own lunch if you attend the full day option. Location: Main Street Recreation Center. (aa)

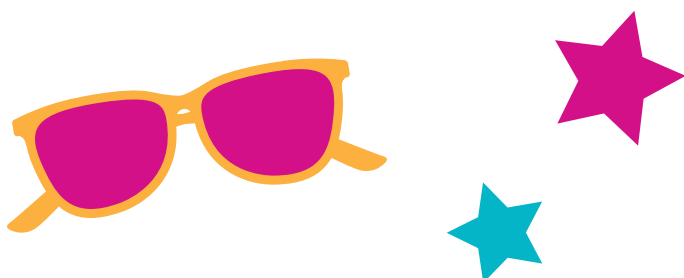
#/Link	Day	Date	Time	R/NR
135329	M-F	6/23-27	9am-12pm	\$280/\$325
135330	M-F	6/23-27	12pm-3pm	\$280/\$325
135331	M-F	6/23-27	9am-3pm	\$380/\$425
135332	M-F	8/4-8/8	9am-12pm	\$280/\$325
135333	M-F	8/4-8/8	12pm-3pm	\$280/\$325
135334	M-F	8/4-8/8	9am-3pm	\$380/\$425

Creative Clay-Makers

Ages 9-12

Bring a lunch and your creativity for four days full of clay-making fun. Participants will learn a variety of hand building methods including pinch, coil, slab, slump, and mosaic to create several fantastic projects. Some projects will be completed during the week while others will be ready for pick up within 2 weeks after they have been kiln-fired. Location: Ackerman SFC. Min/Max: 8/15. (rb)

#/Link	Day	Date	Time	R/NR
134968	M-Th	6/16-6/19	10am-1pm	\$300/\$400
134969	M-Th	7/14-7/17	10am-1pm	\$300/\$400
134970	M-Tu	7/28-7/29	10am-12pm	\$110/\$175
134971	M-Th	8/4-8/7	10am-1pm	\$300/\$400



Sew Simple Basics Camp

Ages 8-13

Enhance your sewing skills or start your sewing journey with this engaging 5-day sewing camp. Create several practical and stylish projects as you learn and grow in a supportive, hands-on environment. Bring a yard of your favorite fabric—everything else you need will be provided. You're welcome to bring your own full-size sewing machine and supplies or make use of the ones we provide. Get ready to stitch, create, and have fun! Location: Spring Avenue Recreation Center. (aa)

#/Link	Day	Date	Time	R/NR
135316	M-F	6/9-6/13	9:30am-11:30am	\$280/\$336
135317	M-F	6/9-6/13	1pm-3pm	\$280/\$336

Sew Simple Quilt Sewing Camp

Ages 8-13

Discover the art of quilting and take your sewing skills to the next level in this creative and fun summer sewing camp. Learn to piece fabrics together and craft beautiful, quilted items such as ornaments, decorations, oven mitts, potholders, doll quilts, or cozy lap quilts. Whether you're a beginner or an experienced sewist, this class offers something for everyone. Bring your own full-size sewing machine and supplies or use ours. Please bring one yard of woven cotton fabric—everything else you need will be provided. Join us and stitch your way to stunning creations! Location: Spring Avenue Recreation Center. (aa)

#/Link	Day	Date	Time	R/NR
135318	M-Th	6/16-6/19	9:30am-11:30am	\$224/\$292



3,2,1, Action! Musical Camp

Ages 8-15

Over three weeks, campers will learn the ins and outs of putting on a musical, from singing and acting to choreography and stagecraft. With guidance from experienced instructors, campers will grow their skills and confidence while working together to create a show-stopping performance. The camp culminates in a live performance, where friends and family can cheer on their budding stars! This summer's production will be "The Magical Land of Oz." Location: Spring Avenue Recreation Center. (aa)

#/Link	Day	Date	Time	R/NR
135313	M-F	6/9-6/27	12pm-3pm	\$350/\$420

Mini Musical Bootcamp

Ages 6-13

Step into the spotlight with a camp that introduces theatre to your child with a variety of activities. Campers will experience the true art of theatre through acting, singing, choreography, blocking, improvisation, audition preparation, and more. Our rising stars will put together a final showcase of all they have learned for family and friends to finish off the week. Campers will need to bring lunch and a water bottle. Location: Spring Avenue Recreation Center. (aa)

#/Link	Day	Date	Time	R/NR
135314	M-F	7/7-7/11	9am-3pm	\$260/\$390

Art of Acting Camp

Ages 8-15

Embark on a daily adventure where our specialized program immerses aspiring performers in diverse skills with a unique focus each day. Campers delve into improvisation, analyze comedic and dramatic characters, and master the art of delivering compelling monologues. The week concludes with a dazzling showcase, allowing participants to present their polished monologues to friends and family, showcasing their journey in the world of acting. Location: Spring Avenue Recreation Center. (aa)

#/Link	Day	Date	Time	R/NR
135315	M-F	7/21-7/25	1pm-4pm	\$150/\$225

Princess Camp

Ages 4-7

Become your favorite princess and experience the royal life. Camp includes stories, art, games, and activities perfect for aspiring royalty. Participants are encouraged to dress as their favorite princess or princess of the day. Expect visits from Snow White, Cinderella, Anna, Rapunzel, and Belle throughout the week. Location: Ackerman SFC. Min/Max: 5/30. (rb)

#/Link	Day	Date	Time	R/NR
134953	M-F	6/23-6/27	10am-11am	\$75/\$110
134954	M-Th	6/30-7/3	10am-11am	\$60/\$90
134955	M-F	7/7-7/11	10am-11am	\$75/\$110
134956	M-F	7/21-7/25	10am-11am	\$75/\$110

Young Lightsabers Camp

Ages 7-11

Come on a galaxy adventure at Jedi camp where we train like Jedi Masters. This camp is filled with creative activities that promote both imagination and movement for healthy bodies and minds. Bring your own lightsaber and go on adventures with new friends. Location: Ackerman SFC. Min/Max: 10/30. (rb)

#/Link	Day	Date	Time	R/NR
134957	M-F	6/16-6/20	12pm-1pm	\$75/\$110
134958	M-F	7/14-7/18	12pm-1pm	\$75/\$110
134959	M-F	7/28-8/1	12pm-1pm	\$75/\$110
134960	M-F	8/4-8/8	12pm-1pm	\$75/\$110

Nerf on the Turf Camp

Ages 8-12

Bring your best Nerf skills to Ackerman SFC and get in on the thrill of blaster-filled competition. Participants will engage in tactical training, themed missions, obstacle course challenges, and help lead their team to victory during arena battles. Location: Ackerman SFC. Min/Max: 12/35. (rb)

#/Link	Day	Date	Time	R/NR
134972	M-F	6/23-6/27	4pm-5pm	\$75/\$110
134973	M-F	7/7-7/11	4pm-5pm	\$75/\$110
134974	M-F	7/28-8/1	4pm-5pm	\$75/\$110

Computer Explorers: Robot Engineers Camp

Ages 7-12

This camp builds knowledge of simple machines, engineering, programming, and teamwork using the LEGO® WeDo Robotics System, as students use an intuitive, icon-based programming environment, helping to bring their model to life. Location: Main Street Recreation Center. (ks)

#/Link	Day	Date	Time	R/NR
135409	M-Th	6/16-6/19	9am-10:30am	\$150/\$195

Computer Explorers: Beginning Fun-gineering Camp

Ages 4-6

Young engineers will build working models of simple machines such as a seesaw, a rolling vehicle, and hockey player using Lego® Educational kits. Children will have a great time working on activities designed around creativity, exploring, investigating and problem solving in a fun group environment! While building these fun and interactive models, they will learn about levers, pulleys, gears, wheels, and axles. Location: Main Street Recreation Center. (ks)

#/Link	Day	Date	Time	R/NR
135410	M-Th	6/16-6/19	11am-12:15pm	\$135/\$180

Computer Explorers: Lights, Camera, Superheroes

Ages 7-12

Villains will not stand a chance when participants team up their crime-fighting superheroes. Join us as we summon writers, directors, and editors to make our own superhero movie. Working in teams to create our own story and script, create background scenes and film a movie using characters to stop crime in the movie city. All students will receive a copy of their movie for home screenings after class is complete. Location: Main Street Recreation Center. (ks)

#/Link	Day	Date	Time	R/NR
135411	M-Th	6/16-6/19	12:45pm-2:15pm	\$150/\$195

Computer Explorers: Animation Workshop Camp

Ages 7-12

Let's explore the world of animation. In this camp students will learn about different 2D techniques, such as stop-motion animation, creating a cartoon strip or software that will bring life to images. As animators, directors and producers, the only limitation is your imagination. Location: Main Street Recreation Center. (ks)

#/Link	Day	Date	Time	R/NR
135413	M-Th	7/21-7/24	9am-10:30am	\$150/\$195

Computer Explorers: Minecraft – Basic Training for Beginners

Ages 6-8

Are your friends all into Minecraft, but you have not quite figured it out? This camp is for you. You and your partner will collaborate to learn essential crafting skills while searching for clues to unlock doors, complete scavenger hunts and more. You will get an introduction to the basics of computer networking, multidimensional objects, and video game graphics. After completing this bootcamp, participants will have the basic tools to participate in more advanced Minecraft adventures. Location: Main Street Recreation Center. (ks)

#/Link	Day	Date	Time	R/NR
135414	M-Th	7/21-7/24	11am-12:30pm	\$150/\$195

Computer Explorers: Minecraft Madness

Ages 7-12

Explore the world of Minecraft, one of the most popular video games in history, offers an amazing world of endless possibilities. Let your imagination transform your Minecraft experience into a unique world that you create. Students will discover how to expand their worlds' possibilities using popular game-enhancing mods. Build traps, arrow launchers, faster rail systems, and participate in building challenges. Learn fundamentals of computer networking through this unique Minecraft experience that also allows you and your friends to work in multiplayer mode as you mine, craft, and build together to survive. Location: Main Street Recreation Center. (ks)

#/Link	Day	Date	Time	R/NR
135416	M-Th	7/21-7/24	1pm-2:30pm	\$150/\$195

Dunham Woods Farm: Horse Camp for Kids

Ages 9-13

Campers will learn the proper ways to groom, tack and handle horses, the basics of riding at the walk and trot, and tons of cool information about breeds, colors, and markings of horses. We will also have fun with games and other activities. Riders should wear jeans or Jodhpur pants and hard soled riding or hiking boots with a small, low heel. Campers must bring an approved riding helmet or bicycle helmet to ride, and a sack lunch. Juice boxes or bottled water will be provided. Location: Dunham Woods Farm. (aa)

#/Link	Day	Date	Time	R/NR
135446	Tu-W	6/10-6/11	11:20am-2pm	\$225/\$275
135447	Tu-W	6/17-6/18	11:20am-2pm	\$225/\$275
135452	Tu-W	6/10-6/18	11:20am-2pm	\$350/\$400
135448	Tu-W	7/8-7/9	11:20am-2pm	\$225/\$275
135449	Tu-W	7/15-7/16	11:20am-2pm	\$225/\$275
135453	Tu-W	7/8-7/16	11:20am-2pm	\$350/\$400
135450	Tu-W	7/29-7/30	11:20am-2pm	\$225/\$275
135451	Tu-W	8/5-8/6	11:20am-2pm	\$225/\$275
135454	Tu-W	7/29-8/6	11:20am-2pm	\$350/\$400

Counselor in Training

Ages 13-15

Are you ready to take the first step toward becoming an amazing camp counselor? Our 3-week Camp Counselor in Training Program is the perfect opportunity for teens to gain leadership skills, build confidence, and learn what it takes to work with younger campers—all while having a blast! During the first week, participants will dive into engaging in-classroom sessions designed to teach essential skills for camp counseling. In weeks two and three, participants will put their skills into practice by spending time at various camps throughout the Park District – Ackerman Sports and Fun, Nature, Imagination Station, and Camp Caravan. Under the guidance of experienced counselors, they will assist with leading activities, managing groups, and ensuring campers have a positive and safe experience. To celebrate their hard work, participants will enjoy a special camp adventure every Friday. By the end of the program, participants will earn a certificate of completion, setting them on the path to becoming outstanding camp counselors and leaders in their community. Must meet the age requirement by September 1, 2025. Location: Various Parks. (ks)

#/Link	Day	Date	Time	R/NR
135335	M-F	6/9-6/27	8:30am-12pm	\$600
135336	M-F	7/7-7/25	8:30am-12pm	\$600

Ackerman Speed Camp

Ages 8-12

Elevate your young athlete's performance during the off-season with our week-long Sports Performance Camp! Focused on developing key athletic skills like speed, agility, and quickness (SAQ), this camp is designed to give athletes the competitive edge they need to excel in any sport. Led by expert trainers at Ackerman SFC, athletes will work in small groups to improve their foundational skills through dynamic, sport-specific exercises. Whether they're gearing up for the next season or looking to enhance their overall athletic ability, this camp is the perfect way to build strength, speed, and confidence. Location: Ackerman SFC. Min/Max: 10/30. (sg)

#/Link	Day	Date	Time	R/NR
134895	M-F	6/9-6/13	10am-11am	\$65/\$95
134896	M-F	6/23-6/27	10am-11am	\$65/\$95
134897	M-F	7/7-7/11	10am-11am	\$65/\$95
134898	M-F	7/21-7/25	10am-11am	\$65/\$95
134899	M-F	8/4-8/8	10am-11am	\$65/\$95

Ackerman SFC Youth Flag Football Camp

Ages 8-12

Participants will be taught the fundamentals of football on the offensive and defensive sides of the ball and will go through a variety of drills, games, and contests to develop their football skill set. Location: Ackerman SFC. Min/Max: 12/35. (rb)

#/Link	Day	Date	Time	R/NR
134964	M-F	6/16-6/20	12pm-1pm	\$75/\$110
134965	M-F	6/30-7/4	12pm-1pm	\$75/\$110
134966	M-F	7/21-7/25	12pm-1pm	\$75/\$110
134967	M-F	8/4-8/8	12pm-1pm	\$75/\$110

COMING SOON!

Glenbard West and South Camps

Check gepark.org/playbook for information on Glenbard West and Glenbard South summer camps. For questions, please contact Clint Babicz at cbabicz@gepark.org.

Information will be posted on February 26, 2025.
Registration begins at 10 am on March 5, 2025.



Spartan Basketball Camp

Grades 4th-8th (as of fall 2025)

Campers are taught basic basketball fundamentals, including individual skills for shooting, passing, dribbling, footwork, rebounding, and defense. With an emphasis placed on teamwork, campers practice those skills in daily contests and scrimmages.

Location: Glen Crest Middle School. (cb)

#/Link	Grade	Day	Date	Time	R/NR
Girls					
134407	4th-6th	M-F	6/2-6/20	2:30pm-4pm	\$100
134408	7th/8th	M-F	6/2-6/20	12:45pm-2:15pm	\$100
Boys					
134409	5th/6th	M-F	6/2-6/20	10:15am-11:45am	\$100
134410	7th/8th	M-F	6/2-6/20	8:30am-10am	\$100

Coach Faulkner Girls Basketball Camp

Grades 2nd-5th

This camp is led by Kristi Faulkner, who is the Girls Varsity Head Coach at Glenbard West. Participants will work on various skills and drills to enhance their basketball skills. Games will be played each day of camp incorporating the skills that were worked on that day. Camp will utilize all three courts and participants will be divided based on age. All participants are required to bring their own basketball. Location: Ackerman SFC. Min/Max: 20/75. (dt)

#/Link	Day	Date	Time	R/NR
134920	M-F	6/9-6/13	10:30am-12pm	\$155/\$205

Coach Giunta-Mayer Basketball Skills Camp

Grades 1st-4th

Basketball Coach Christine Giunta-Mayer will teach participants the basic techniques of shooting, dribbling, passing, rebounding, and defense. This camp will not only provide a fundamental base for each player, but will also be an enjoyable experience.

Location: Ackerman SFC. Min/Max: 5/25. (rb)

#/Link	Grade	Day	Date	Time	R/NR
135016	1st/2nd	M-Th	6/9-6/12	1pm-2pm	\$100/\$150
135017	3rd/4th	M-Th	6/9-6/12	2pm-3pm	\$100/\$150
135018	1st/2nd	M-Th	7/7-7/10	12pm-1pm	\$100/\$150
135019	3rd/4th	M-Th	7/7-7/10	1pm-2pm	\$100/\$150
135020	3rd/4th	M-Th	7/28-7/31	1pm-2pm	\$100/\$150
135021	1st/2nd	M-Th	7/28-7/31	2pm-3pm	\$100/\$150

Bulls Kid Nation Youth Hoops Summer Camp by BMO

Ages 5-14

Sign your kids up to join the Bulls for this 5-day program designed to improve participants basketball skills while providing an unforgettable experience. This program is intended for players of all skill levels. Participants will be split into groups by age and ability, allowing for fine-tuned curriculum and individualized challenges. Participants will practice fundamentals and improve their game through on-court play, while also taking part in leadership and teamwork development. Participants will receive Chicago Bulls Tickets Offers (subject to change), Youth Hoops Swag Bag, and opportunities to participate in the Bulls Skills Challenge for a chance to win exclusive prizes. Location: Ackerman SFC. Min/Max: 20/60. (rb)

Register at bulls.com/kidnation

Day	Date	Time	R/NR
M-F	6/23-6/27	9am-12pm	\$200
M-F	6/23-6/27	1pm-4pm	\$200

Sand Volleyball Camp

Ages 9-14

Develop volleyball skills, strategy, and technique. Participants will receive a solid foundation on the fundamental skills of sand volleyball through fun and active drills and daily scrimmages.

Location: Ackerman SFC. Min/Max: 10/30. (rb)

#/Link	Day	Date	Time	R/NR
134961	M-F	6/23-6/27	9am-10am	\$75/\$110
134962	M-F	7/7-7/11	9am-10am	\$75/\$110
134963	M-F	7/21-7/25	9am-10am	\$75/\$110

Volleyball Skills Camp

Grades 1st-8th

Glenbard West State Champion Coach Christine Giunta-Mayer will focus on fundamental training and individual skills for passing, setting, blocking, and serving. Young athletes will improve their volleyball skills and develop proper playing habits. Location:

Ackerman SFC. Min/Max: 5/30. (rb)

#/Link	Grade	Day	Date	Time	R/NR
Boys					
134995	1st/2nd	M-Th	6/2-6/5	12pm-1pm	\$100/\$150
134993	3rd-5th	M-Th	6/2-6/5	1pm-2pm	\$100/\$150
134997	6th-8th	M-Th	6/2-6/5	2pm-3pm	\$100/\$150
134999	3rd/4th	M-Th	6/9-6/12	3pm-4pm	\$100/\$150
135001	6th-8th	M-Th	6/9-6/12	4pm-5pm	\$100/\$150
135002	1st-4th	M-Th	7/7-7/10	11am-12pm	\$100/\$150
135004	5th-8th	M-Th	7/7-7/10	2pm-3pm	\$100/\$150
135007	1st-3rd	M-Th	7/28-7/31	3pm-4pm	\$100/\$150
135009	7th/8th	M-Th	7/28-7/31	4pm-5pm	\$100/\$150
135010	1st/2nd	M-Th	8/4-8/7	9am-10am	\$100/\$150
135012	3rd-5th	M-Th	8/4-8/7	10am-11am	\$100/\$150
135014	6th-8th	M-Th	8/4-8/7	11am-12pm	\$100/\$150
Girls					
134994	1st/2nd	M-Th	6/2-6/5	12pm-1pm	\$100/\$150
134992	3rd-5th	M-Th	6/2-6/5	1pm-2pm	\$100/\$150
134996	6th-8th	M-Th	6/2-6/5	2pm-3pm	\$100/\$150
134998	3rd/4th	M-Th	6/9-6/12	3pm-4pm	\$100/\$150
135000	6th-8th	M-Th	6/9-6/12	4pm-5pm	\$100/\$150
135003	1st-4th	M-Th	7/7-7/10	11am-12pm	\$100/\$150
135005	5th-8th	M-Th	7/7-7/10	2pm-3pm	\$100/\$150
135006	1st-3rd	M-Th	7/28-7/31	3pm-4pm	\$100/\$150
135008	7th/8th	M-Th	7/28-7/31	4pm-5pm	\$100/\$150
135011	1st/2nd	M-Th	8/4-8/7	9am-10am	\$100/\$150
135013	3rd-5th	M-Th	8/4-8/7	10am-11am	\$100/\$150
135015	6th/8th	M-Th	8/4-8/7	11am-12pm	\$100/\$150

Spartan Volleyball Camp

Grades 5th-8th (as of fall 2025)

Campers focus on the fundamentals of team offense including passing, setting and spiking, along with team defense and blocking. Location: Glen Crest Middle School. (cb)

#/Link	Grade	Day	Date	Time	R/NR
Girls					
134411	5th	M-F	6/23-7/3	12pm-1pm	\$80
134412	6th-7th	M-F	6/23-7/3	10am-11:30am	\$80
134413	8th	M-F	6/23-7/3	8:30am-10am	\$80
Boys					
134414	5th	M-F	6/23-7/3	12pm-1pm	\$80
134415	6th	M-F	6/23-7/3	10am-11:30am	\$80
134416	7th-8th	M-F	6/23-7/3	8:30am-10am	\$80

Cyclones Volleyball Camp

Grades 3rd-8th

The area's top club team, the Cyclones, will teach students the fundamentals of passing, setting, and spiking. The lesson plan directs the use of self-mastery training that helps each student reach a new level in preparation for the upcoming season with specialized drills to enhance skills. Equipment provided. Location: College of DuPage. Min/Max: 10/30. (dt)

#/Link	Grades	Day	Date	Time	R/NR
134921	3rd-5th	M-Th	6/23-6/26	12:30pm-2:30pm	\$115/\$175
134922	6th-8th	M-Th	7/21-7/24	12:30pm-3pm	\$150/\$225

VolleyKidz USA: Grass Volleyball Camps

Ages 8-13

VolleyKidz coaches deliver an introductory and challenging lesson plan on grass volleyball courts. Lots of contests and games too, with fun and active instructors. The lesson plan develops passing, setting, overhand serving and spiking. VolleyKidz athletes will be divided by age and ability level. The grass adds a new dimension to your game. Location: Ackerman Park. Min/Max: 8/24. (dt)

#/Link	Ages	Day	Date	Time	R/NR
135442	8-10	Tu-F	6/10-6/13	8:30am-10:30am	\$99/\$124
135444	8-10	M-Th	7/28-7/31	3:30pm-5:30pm	\$99/\$124
135443	11-13	Tu-F	6/10-6/13	10:30am-12:30pm	\$99/\$124
135445	11-13	M-Th	7/28-7/31	3:30pm-5:30pm	\$99/\$124



Jordan Kent's Just Kids Skill Camps

Ages 6-12

Join the Just Kids Skills Camp and take part in one of the freshest and most exciting camp experiences around! Offering beginning to intermediate fundamental training in football, soccer, basketball, and additional sports throughout the week. Our “total athlete approach” also provides agility training, fun games, character enrichment, and nutrition education. Campers will learn to challenge themselves and develop their athletic potential in a positive and exciting setting that is unmatched anywhere. Location: Ackerman SFC. (rb)

Register at jordankentcamps.com

Day	Date	Time	R/NR
M-Th	7/21-7/24	8am-12pm	\$179.95

Chicago Red Stars Soccer Camp

Ages 7-16

Challenge yourself with a more intense and competitive soccer camp experience with Chicago Stars FC. Chicago Stars FC Park District camps are led by current Stars FC staff and coaches. We aim to provide a professional, fun and, welcoming environment for kids to cultivate new skills while further developing and mastering current strengths. The camp curriculum focuses on foot skills, passing/receiving, and finishing techniques that allow players to be successful in game situations. Campers will receive a Stars FC t-shirt and other Chicago Stars swag! Location: Ackerman Park. (da)

#/Link	Day	Date	Time	R/NR
135412	M-F	6/9-6/13	9am-12pm	\$255/\$300

Chicago Fire Little Sparks Soccer Camp

Ages 2-5

Little Sparks is Chicago Fire’s introduction to soccer program, where participants take their first steps in soccer. Adults/ caregivers are encouraged to participate. Camp will take participants on an exciting journey using imaginative stories to explore the game, while our coaches focus on their holistic development. Little Sparks uses three core principles: experiential play, creative learning, and holistic activity to create an environment for children to learn, play, and have fun! Location: Ackerman Park. (da)

#/Link	Day	Date	Time	R/NR
135415	M-F	7/7-7/11	8am-9am	\$120
135417	M-F	8/11-8/15	8am-9am	\$120

Chicago Fire Soccer Camp

Ages 6-12

Chicago Fire camps are designed for participants of all ages and abilities to develop their soccer skills through a tailored camp curriculum and authentic soccer experience. Camps provide professional coach instruction to develop technical ability, social-emotional learning, and love for the game. All participants will receive a Chicago Fire t-shirt, registration to its Kid’s Club, a Chicago Fire poster, and a ticket to a game at Soldier Field! Location: Ackerman Park. (da)

#/Link	Day	Date	Time	R/NR
135418	M-F	7/7-7/11	9am-12pm	\$205
135420	M-F	7/7-7/11	1pm-4pm	\$205
135422	M-F	7/7-7/11	9am-4pm	\$340
135419	M-F	8/11-8/15	9am-12pm	\$205
135421	M-F	8/11-8/15	1pm-4pm	\$205
135423	M-F	8/11-8/15	9am-4pm	\$340

Challenger TetraBrazil Soccer Camp

Ages 3-14

The TetraBrazil Camp blends traditional Brazilian technical training with the flair, passion, and creativity that define South American soccer. Developed by a team of professional soccer educators in Brazil, the TetraBrazil curriculum brings the same high-level training used by professional Brazilian clubs to teams, coaches, and players across North America. Campers will experience the vibrant culture of Brazilian soccer—warming up to samba music, learning Portuguese phrases, and gaining insight into life in a country where soccer is more than a sport—it’s a way of life. Camp will include a free soccer ball, jersey, and certificate. Location: Ackerman Park. (da)

#/Link	Ages	Day	Date	Time	R/NR
135424	3-5	M-F	6/2-6/6	8am-8:45am	\$145
135425	3-5	M-F	7/28-8/1	8am-8:45am	\$145
135426	6-14	M-F	6/2-6/6	9am-12pm	\$215
135427	6-14	M-F	7/28-8/1	9am-12pm	\$215



Everton Junior Toffees Camp

Ages 5-7

The Junior Toffees Program guides players through a variety of exciting activities, technical skill sessions, and small-sided games that all encourage maximum touches, promoting both skill development and a genuine love of the game. Through this program, players not only learn the fundamentals needed to become a competitive soccer player but also experience the joy, passion, and camaraderie that are central to Everton's values. The Junior Toffees Program aims to inspire young athletes to enjoy every moment on the field while building the skills and confidence needed to excel. Location: Ackerman Park. (da)

#/Link	Day	Date	Time	R/NR
135428	M-F	8/4-8/8	9am-10:30am	\$160
135429	M-F	8/4-8/8	10:45am-12:15pm	\$160

Everton Advanced Developmental Player Camp

Ages 8-14

The Advanced Developmental Player Program features sessions designed around the 'Six Brilliant Basics' taken from the Everton Academy Game Model and curriculum. Finishing, passing, receiving, forward moves/dribbling, turning and screening, and defending. Location: Ackerman Park. (da)

#/Link	Day	Date	Time	R/NR
135430	M-F	8/4-8/8	9am-12pm	\$250

Future Pros Pee Wee Soccer Camp

Ages 4-6

Introduce your little one to the game of soccer! This class offers a perfect blend of fun activities and basic soccer skills. The primary focus is fun in a safe and structured environment through games and drills. Each participant receives a soccer ball. Location: Ackerman Park. (da)

#/Link	Day	Date	Time	R/NR
135431	M-F	6/9-6/13	9am-10am	\$115
135432	M-F	6/16-6/20	9am-10am	\$115
135433	M-F	7/14-7/18	9am-10am	\$115
135434	M-F	7/21-7/25	9am-10am	\$115

Future Pros Open Soccer Camp

Ages 7-14

With increased skill comes increased success. With increased success comes a higher level of enjoyment. We will focus on the development of technical and tactical ability through games and drills. Players are divided by age and ability level for proper instruction. Each participant receives a soccer ball. Location: Ackerman Park. (da)

#/Link	Day	Date	Time	R/NR
135435	M-F	6/9-6/13	9am-11am	\$160
135436	M-F	6/16-6/20	9am-11am	\$160
135437	M-F	7/14-7/18	9am-11am	\$160
135438	M-F	7/21-7/25	9am-11am	\$160

Rise Field Hockey: Pre-Season Training Camp

Grades 6th-12th

Join RISE Field Hockey coaches for a final skills and training session before the high school season begins. All incoming 6th-12th graders are invited. Participants must bring their own stick, shin guards, and mouth guard. Location: Newton Park. Min/Max: 10/45. (dt)

#/Link	Day	Date	Time	R/NR
134923	M-Th	7/21-7/24	10am-11:30am	\$145

Bulldogs Boys Summer Lacrosse

Grades 2nd-8th (as of fall 2025)

Speed Lax: Have some fun and keep your skills sharp this summer. This program will be run in a pick-up game format. Coaches will divide the players into teams each week and act as coaching officials in the games. Full pads/equipment are required. Location: Newton Park. (cb)

#/Link	Grade	Day	Date	Time	R/NR
134417	2nd-4th	W	6/18-7/23	5:30pm-6:30pm	\$50
134418	5th-8th	W	6/18-7/23	6:30pm-8pm	\$50



East Ave Lacrosse: Girls Lacrosse Camp

Grades PreK-8th (as of fall 2025)

Learn why lacrosse continues to be the fastest growing sport in America during this fun, fast-paced camp led by East Ave. Lacrosse. Participants must bring their own stick, goggles, mouthguard, and drink to camp. If needed, a limited amount of equipment is available to rent through East Ave. Lacrosse. Email jerry@eastavelacrosse.com for equipment rental information. Not affiliated with Glenbard West High School. Location: Newton Park. (cb)

#/Link	Grade	Day	Date	Time	R/NR
134419	PreK-2nd	M-Th	6/9-6/12	1:30pm-2:30pm	\$160
134420	3rd-8th	M-Th	6/9-6/12	1:30pm-3pm	\$195
134421	PreK-2nd	M-Th	7/7-7/11	1:30pm-2:30pm	\$160
134422	3rd-8th	M-Th	7/7-7/11	1:30pm-3pm	\$195

East Ave Lacrosse: Boys Lacrosse Camp

Grades 1st-8th (as of fall 2025)

Led by East Ave. Lacrosse, these camps focus on the fundamentals and mechanics of the game. Participants must bring their own stick, helmet, gloves, mouthguard, and drink to camp. If needed, a limited amount of equipment is available to rent through East Ave. Lacrosse. Email jerry@eastavelacrosse.com for equipment rental information. Not affiliated with Glenbard West High School. Location: Newton Park. (cb)

#/Link	Grade	Day	Date	Time	R/NR
134423	PreK-2nd	M-Th	6/9-6/12	1:30pm-2:30pm	\$160
134424	3rd-8th	M-Th	6/9-6/12	1:30pm-3pm	\$195
134425	PreK-2nd	M-Th	7/7-7/11	1:30pm-2:30pm	\$160
134426	3rd-8th	M-Th	7/7-7/11	1:30pm-3pm	\$195

True Lacrosse: Boys Lacrosse Camp

Grades 1st-8th (as of fall 2025)

Join True Lacrosse coaches for this 4-day camp. Players will work on individualized stickwork, positional play and situational gameplay in a fun, fast-paced environment. Full pads/equipment are required. Not affiliated with Glenbard West High School. Location: Newton Park. Min/Max: 20/40. (cb)

#/Link	Grade	Day	Date	Time	R/NR
134427	1st-4th	M-Th	6/16-6/19	8am-10am	\$200
134428	5th-8th	M-Th	6/16-6/19	10am-12pm	\$200

Chicago White Sox: Baseball Camp

Ages 5-12

Learn from the pro's this summer at a White Sox Summer Camp presented by Wintrust, with participating partner Topps! Professional coaches from the White Sox organization have helped build programs designed for kids ages 5-12 at every ability level. All campers will work on throwing, hitting, fielding, and base-running, but more importantly, they will be taught how to love the game of baseball. Instructors will supervise campers based off-of age and ability, and cater each experience to meet your child's needs. On top of the four (4) days of camp, each camper will receive tickets to a White Sox game (date TBD), a White Sox t-shirt, hat, and other various White Sox goodies. Location: Village Green Park. Min/Max: 16/64. (cb)

Register at whitesox.com/play

Day	Date	Time	R/NR
M-Th	6/23-6/26	1pm-4pm	\$165
M-Th	8/4-8/7	8:30am-11:30am	\$165

Ackerman Power Hour

Ages 10-15

Unleash your potential with Ackerman’s Power Hour! Designed for ages 10-15, this high-energy, one-hour workout packs a punch, blending strength, endurance, and flexibility into one exciting session. Start with 20 minutes of bodyweight strength training to build muscle and boost power, followed by 20 minutes of fast-paced cycling to supercharge your stamina. Finish with 20 minutes of yoga and mobility exercises to improve flexibility, recovery, and prevent injury. Led by expert trainers, this camp will elevate your athletic performance and leave you feeling stronger, more energized, and ready to crush your goals. Location: Ackerman SFC. Min/Max: 5/15. (sg)

#/Link	Day	Date	Time	R/NR
135026	M-F	6/16-6/20	4pm-5pm	\$75/\$110
134900	M-F	7/14-7/18	4pm-5pm	\$75/\$110

Ackerman Fit Camp

Ages 10-15

The Ackerman SFC team of experienced fitness professionals is excited to bring a complete fitness program to the youth of our community. Each day will start with a total body stretch and dynamic warmup to get the body ready for the day’s workouts. From there we will go into Performance Training focusing on speed, agility, strength, mobility, and injury prevention. Next up is Cycle to help build endurance and heart health. The day will finish with Yoga to help release any tension of the body and mind. Stress relief relaxation will take place at the end of class. Location: Ackerman SFC. Min/Max: 5/15. (sg)

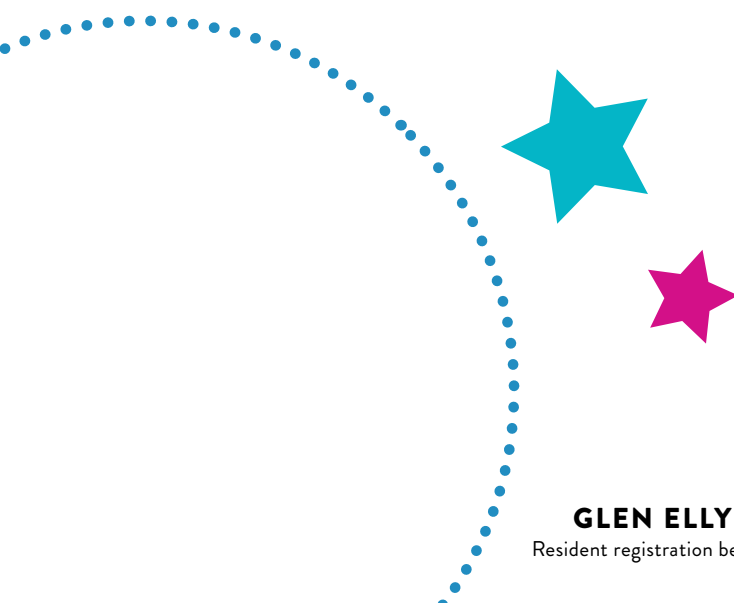
#/Link	Day	Date	Time	R/NR
134894	M-F	6/2-6/6	9am-11am	\$100/\$150
134901	M-F	7/14-7/18	9am-11am	\$100/\$150

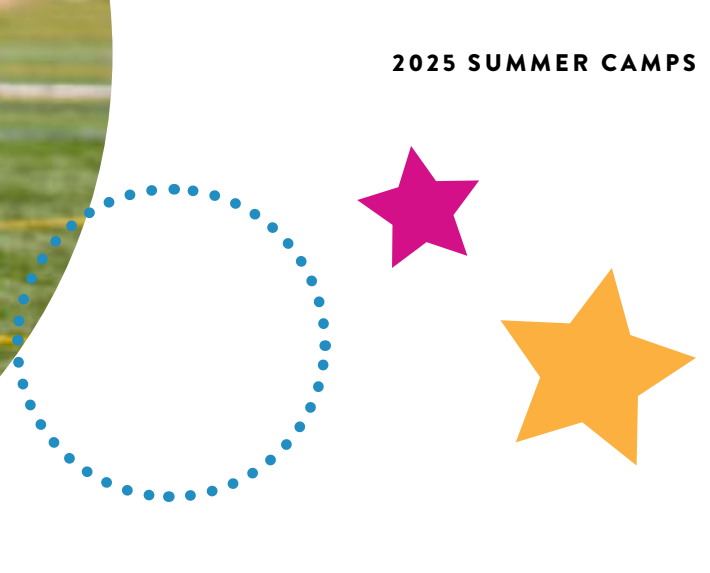
Ackerman Sports and Fun Camp

Grades 1st-8th

Keep your children entertained with a week full of sports, games, and activities. Wear comfortable clothing, sport some closed-toed shoes, and bring water and a nut-free snack to camp each day. Register for the morning, afternoon, or both. Location: Ackerman SFC. Min/Max: 20/75. (rb)

#/Link	Day	Date	Time	R/NR
135464	M-F	6/2-6/6	9am-12pm	\$110/\$160
135465	M-F	6/2-6/6	12:30pm-3:30pm	\$110/\$160
135466	M-F	6/2-6/6	9am-3:30pm	\$230/\$340
134924	M-F	6/9-6/13	9am-12pm	\$110/\$160
134925	M-F	6/9-6/13	12:30pm-3:30pm	\$110/\$160
134926	M-F	6/9-6/13	9am-3:30pm	\$230/\$340
134927	M-F	6/16-6/20	9am-12pm	\$110/\$160
134928	M-F	6/16-6/20	12:30pm-3:30pm	\$110/\$160
134929	M-F	6/16-6/20	9am-3:30pm	\$230/\$340
134930	M-F	6/23-6/27	9am-12pm	\$110/\$160
134931	M-F	6/23-6/27	12:30pm-3:30pm	\$110/\$160
134932	M-F	6/23-6/27	9am-3:30pm	\$230/\$340
134933	M-Th	6/30-7/3	9am-12pm	\$90/\$135
134934	M-Th	6/30-7/3	12:30pm-3:30pm	\$90/\$135
134935	M-Th	6/30-7/3	9am-3:30pm	\$190/\$280
134936	M-F	7/7-7/11	9am-12pm	\$110/\$160
134937	M-F	7/7-7/11	12:30pm-3:30pm	\$110/\$160
134938	M-F	7/7-7/11	9am-3:30pm	\$230/\$340
134940	M-F	7/14-7/18	9am-12pm	\$110/\$160
134941	M-F	7/14-7/18	12:30pm-3:30pm	\$110/\$160
134942	M-F	7/14-7/18	9am-3:30pm	\$230/\$340
134943	M-F	7/21-7/25	9am-12pm	\$110/\$160
134944	M-F	7/21-7/25	12:30pm-3:30pm	\$110/\$160
134945	M-F	7/21-7/25	9am-3:30pm	\$230/\$340
134946	M-F	7/28-8/1	9am-12pm	\$110/\$160
134947	M-F	7/28-8/1	12:30pm-3:30pm	\$110/\$160
134948	M-F	7/28-8/1	9am-3:30pm	\$230/\$340
134949	M-F	8/4-8/8	9am-12pm	\$110/\$160
134950	M-F	8/4-8/8	12:30pm-3:30pm	\$110/\$160
134951	M-F	8/4-8/8	9am-3:30pm	\$230/\$340
134952	M-F	8/11-8/15	9am-12pm	\$110/\$160
134953	M-F	8/11-8/15	12:30pm-3:30pm	\$110/\$160
134954	M-F	8/11-8/15	9am-3:30pm	\$230/\$340





Chicago Union Ultimate Frisbee Camp

Ages 9-13

Ultimate is a non-contact, action packed sport played with a flying disc that emphasizes teamwork and respect for your opponent, in addition to running hard and jumping high. Camp participants will learn the basic rules and strategies of Ultimate, how to throw and catch, on and off field leadership and teamwork skills. All camp participants receive a Chicago Union disc, jersey, and four tickets to a professional game. All ability levels are encouraged to join. Location: Ackerman Park. Min/Max: 10/50. (dt)

#/Link	Day	Date	Time	R/NR
134918	M-F	6/9-6/13	1pm-3:30pm	\$130/\$195
134919	M-F	7/7-7/11	1pm-3:30pm	\$130/\$195
135441	M-F	7/21-7/25	1pm-3:30pm	\$130/\$195

Youth Pickleball Camp

Ages 9-15

Learn the basics of pickleball in this weeklong camp. Students will have a blast participating in various drills and exercises to enhance the learning experience. All skill levels are welcome. Participants are encouraged to provide their own paddle. Location: George Ball Park. Min/Max: 6/16. (rb)

#/Link	Ages	Day	Date	Time	R/NR
134984	9-11	M-F	6/16-6/19	10am-11am	\$85/\$125
134985	9-11	M-F	6/23-6/26	10am-11am	\$85/\$125
134986	9-11	M-F	7/14-7/17	10am-11am	\$85/\$125
134987	9-11	M-F	7/21-7/24	10am-11am	\$85/\$125
134988	12-15	M-F	6/16-6/19	11am-12pm	\$85/\$125
134989	12-15	M-F	6/23-6/26	11am-12pm	\$85/\$125
134990	12-15	M-F	7/14-7/17	11am-12pm	\$85/\$125
134991	12-15	M-F	7/21-7/24	11am-12pm	\$85/\$125

Tennis and Swim Camp

Ages 6-14

Join us at Sunset Park where instructors will teach the basic skills and drills for tennis while incorporating those into interactive games. Participants will then head to Sunset Pool to cool off and have fun to finish out each camp day. Participants are encouraged to provide their own tennis racquet. Swimsuit is required for each participant. Location: Sunset Park and Pool. Min/Max: 8/44. (bt)

#/Link	Day	Date	Time	R/NR
134975	M-W	6/9-6/11	1pm-4pm	\$160/\$230
134976	M-W	6/16-6/18	1pm-4pm	\$160/\$230
134977	M-W	6/23-6/25	1pm-4pm	\$160/\$230
134978	M-W	6/30-7/2	1pm-4pm	\$160/\$230
134979	M-W	7/7-7/9	1pm-4pm	\$160/\$230
134980	M-W	7/14-7/16	1pm-4pm	\$160/\$230
134981	M-W	7/21-7/23	1pm-4pm	\$160/\$230
134982	M-W	7/28-7/30	1pm-4pm	\$160/\$230

Summer Tennis Mini Camp

Ages 6-10

Enjoy learning or improving your skills at the end of summer tennis mini camp. Bring your friends for a fun, social atmosphere of drills and games. All ability levels are welcome. Location: Glenbard West Memorial Courts. Min/Max: 4/32. (bt)

#/Link	Day	Date	Time	R/NR
134983	M-W	8/4-8/6	9am-11am	\$110/\$150

district policies

DEFINITION OF RESIDENCY

Anyone living within the geographic boundaries of the Glen Ellyn Park District is considered a resident. It's important to note that our boundaries may not align with the Village of Glen Ellyn. Residents contribute financially to the operation of the park system through property taxes. To compensate for the property tax disparity, the District charges nonresidents a higher fee for activities. If you reside in Glen Ellyn but do not pay property taxes to any park district, you are eligible for the Nonresident Household Membership.

The fastest way to determine your resident status is by checking your property tax bill, which will specify the park district you pay taxes to. If you need assistance, please call (630) 942-7280 or email registration@gepark.org.

WAIVERS OF LIABILITY

To participate in any Glen Ellyn Park District activity, you must sign a waiver releasing the Park District of any liability.

ACTIVITY CANCELLATIONS/CHANGES

The Glen Ellyn Park District reserves the right to cancel, postpone or combine activities, or change instructors. If insufficient enrollment causes an activity to be canceled, notification will be given 7 days in advance, and full tuition refunded. For weather-related cancellations, please visit gepark.org/hotline.

REFUNDS / WITHDRAWALS

Refund requests must be submitted by calling (630) 942-7280, emailing registration@gepark.org, or completing our Refund Request Form at gepark.org/refunds. Withdrawals before the start of an activity will be subject to a service charge of at least \$5.00. Refunds for moving, injury/illness, or schedule changes will be prorated based on the date of the refund request. Some activities may have separate refund policies. Refunds can take up to 30 days.

COMMITMENT TO QUALITY

The Park District aims to foster both first-time and repeat participation by implementing a refund policy featuring a satisfaction guarantee. This unique refund policy serves as a valuable mechanism for receiving timely feedback on any dissatisfaction with our services, enabling us to take prompt action to enhance the overall experience. If you find yourself unsatisfied, simply inform us, and we will offer one of the following options: inviting you to repeat the activity at no charge, providing a credit applicable to another activity, or issuing a full refund. Our guarantee hinges on fulfilling our commitment to meet the published expectations for the service you've utilized. A refund will be granted if your dissatisfaction is attributed to circumstances under the Park District's control. Requests for these options must be submitted before the activity's midpoint or within two weeks of a single meeting activity, in writing, and returned to either the Spring Avenue Recreation Center or the Main Street Recreation Center. Please note that the Satisfaction Guarantee does not apply to trips, special events with prepaid admissions and tickets, and athletic activities where equipment has already been ordered.

ACCOMMODATION FOR PERSONS WITH DISABILITIES:

Persons with disabilities are encouraged to contact the Park District at (630) 942-7280 about special accommodations needed for the enjoyment of Park District activities.

FEE ASSISTANCE AND SCHOLARSHIP PROGRAM

The Glen Ellyn Park District recognizes there are community residents who may suffer economic setbacks that might preclude their participation in Glen Ellyn Park District activities. The scholarship, or financial aid, program is available to all Glen Ellyn Park District residents that qualify.

Scholarship funds can be used for non-contractual camps and activities, pool passes, trips, preschool, fitness, athletics, etc., where fees are required. Funds are not eligible for equipment purchases or rental fees. Residents who qualify are eligible to receive up to \$400 maximum per person per calendar year (January 1-December 31) based on need and availability of funds.

Applicants must be able to provide proof of residency and income as defined on the application. Copies of the application are available at gepark.org/financial-aid or by visiting the Spring Avenue (185 Spring Avenue) or Main Street (501 Hill Avenue) Recreation Centers. A completed application form along with copies of supporting documents must be returned in person or mailed to: Scholarship Program, Glen Ellyn Park District, 185 Spring Avenue, Glen Ellyn, IL 60137. Please allow up to 3 weeks for the application process. Applicants will be notified by letter or phone of the decision made concerning the scholarship. If you have questions, email scholarships@gepark.org.

GLEN ELLYN PARK DISTRICT AND THE ADA

The Americans with Disabilities Act (ADA) took effect in January 1990 and the Glen Ellyn Park District complies with the legislation's purpose which prohibits discrimination on the basis of a disability. The Glen Ellyn Park District will make reasonable accommodations in recreation activities to enable participation by an individual with a disability that meets essential eligibility requirements for that leisure activity and facility. If you have questions about the Glen Ellyn District's commitment regarding the ADA policy or you believe you have been unfairly discriminated against by the Park District, please contact Stacey Lim at slim@gepark.org or (630) 942-7275. Those who use the Telecommunications Device for the deaf may reach the Park District by calling the Illinois Relay Line at (800) 526-0844.

BEHAVIOR POLICY

All individuals participating or volunteering in a Park District activity or activities, attending a class or event, or using District facilities or property are expected to exhibit appropriate behavior at all times and adhere to the Glen Ellyn Park District Behavior Code of Conduct. A copy of the Behavior Code of Conduct can be found at gepark.org. The failure to follow the Behavior Code of Conduct, or activity or facility rules, may result in removal of the participant or guest from the activity, event, park or facility.

PETS AT EVENTS

The Glen Ellyn Park District asks that everyone please exercise good judgment and leave pets at home when attending events that draw large crowds. Please show respect for other people, yourself and your pet by helping the Park District maintain a safe and healthy environment where all people have the opportunity to participate and enjoy themselves.

NON-DISCRIMINATION STATEMENT

The Glen Ellyn Park District does not discriminate on the basis of race, color, religion, gender, sexual orientation, age, national origin, marital status, veteran status, disability or any other legally protected characteristic either through its employment practices, the operation of its activities and services, or through its relationship with vendors and other business providers.

INSURANCE

The Glen Ellyn Park District does not provide medical insurance coverage for individuals who participate in our activities or use our facilities. To do so would make activities and user fees cost prohibitive.

ADULT'S CODE OF ETHICS

- I will encourage good sportsmanship by demonstrating positive support for players, coaches, and officials at every game and practice.
- I will place the emotional and physical well-being of my child ahead of my personal desire to win.
- I will insist that my child play in a safe and healthy environment.
- I will require that my child's coach be trained in the responsibilities of being a youth sports coach.
- I will remember that the game is for youth - not adults.
- I will do my very best to make youth sports fun for my child.
- I will ask my child to treat other players, coaches, and officials with respect regardless of race, gender, creed, or ability.
- I agree with these rules and understand that the Glen Ellyn Park District Associations have adopted a Zero-Tolerance Policy and that not abiding by these rules may restrict me from attending future games and practices.

NOTICE OF POSSIBLE CHANGES IN THE PLAYBOOK LISTINGS

The policies, procedures, requirements, activities, fees and facility availability contained in this brochure, represent Park District activities and policies at the time of publication. At times, changes in activities and policies are necessary or desirable after the publication of this guide, but prior to the commencement of activities or facility operations. In order to provide the best services, activities and facilities to our customers, the Glen Ellyn Park District reserves the right to add, change, modify or delete any activity information or policies after they have been published. We will attempt to make a reasonable effort to provide prompt notice of any changes in the information provided, but the extent of the notification or its timeliness can not be guaranteed. We apologize for any inconvenience; your understanding and cooperation are appreciated.

PHOTO & VIDEO POLICY

Photos and video footage are periodically taken of people participating in a Park District program or activity, attending a class or event, or using District facilities or property. Please be aware that by registering for an activity or class, participating in an activity, attending an event, or using District facilities or property, you authorize the District to use these photos and video footage for promotional purposes in District publications, advertising, marketing materials, brochures, event flyers, social media (including Facebook, YouTube, Instagram, X (formerly Twitter), and other social media sites operated by the District), and the District's website without additional prior notice or permission and without any compensation to you. All photos and videos are property of the District. If you do not want a picture taken, please tell our photographer.