



ADDENDUM 01

Project: Panfish Park

Addendum Date: January 28, 2025

Bid Document Date: January 17, 2025

This Addendum becomes a part of the Bidding and Contract Documents and modifies the original Bidding Documents. Acknowledgment of receipt of this Addendum in the space provided on the Bid Form is required. FAILURE TO ACKNOWLEDGE RECEIPT OF THIS ADDENDUM ON THE BID FORM MAY DISQUALIFY BID.

General Clarifications:

1. Additional information has been provided on playground equipment and site furniture. Purchased by owner and installed by contractor.

Attachments:

1. Equipment Information Sheets

END OF ADDENDUM

EQUIPMENT INFORMATION SHEETS

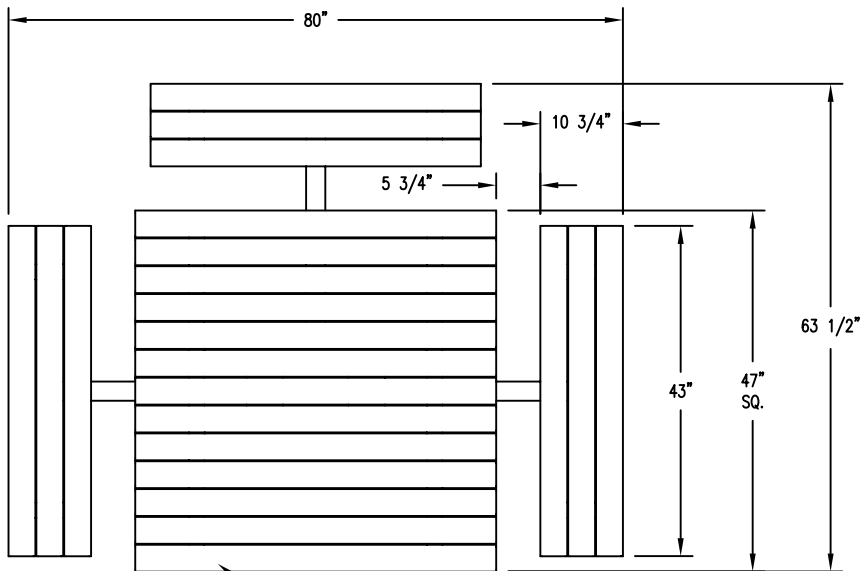
Equipment Notes:

1. Playground equipment, site furniture, and shelter to be purchased by owner and installed by the contractor as part of the lump sum bid.
2. Equipment to be picked by contractor from maintenance facility at 490 Kenilworth
3. In general, site furniture is desired to be surface mounted unless otherwise noted.
4. Call owner for final layout and positioning of site furniture

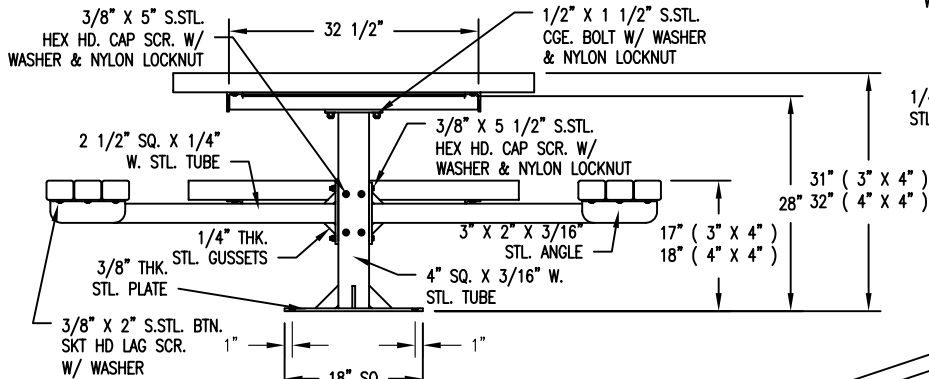
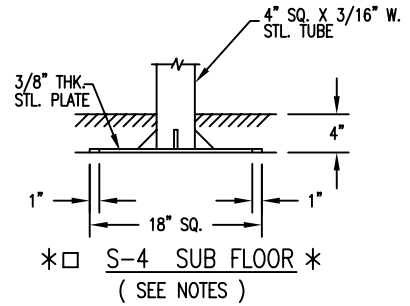
Glen Ellyn Park District Panfish Park



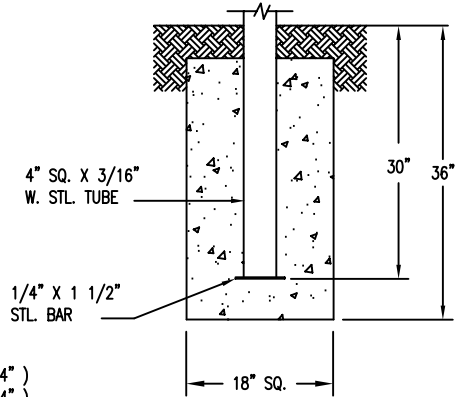
Color Palette:
Forester



RECYCLED PLASTIC SLATS
(SHOWN W/ 3" X 4")



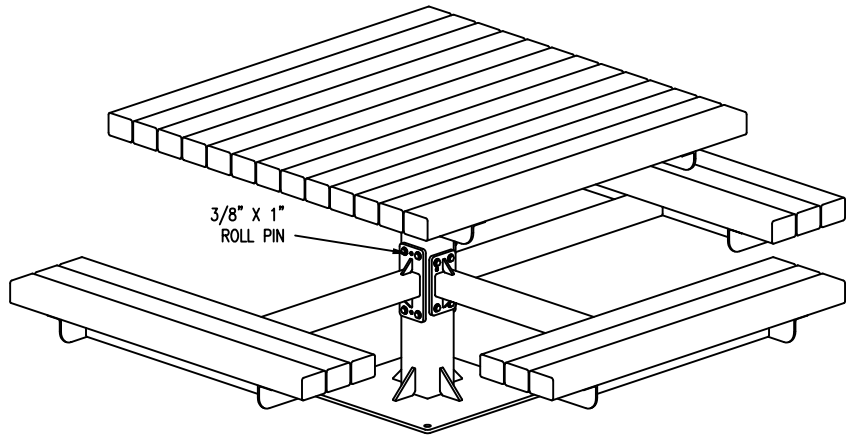
* □ S-2 SURFACE *
(SEE NOTES)



□ S-1 EMBEDMENT

SLAT OPTIONS

- "CEDAR" RECYCLED PLASTIC
- "GREY" RECYCLED PLASTIC
- "REDWOOD" RECYCLED PLASTIC
- "WALNUT" RECYCLED PLASTIC
- OTHER _____



NOTES

- 1.) ALL STL. MEMBERS COATED W/ ZINC RICH EPOXY THEN FINISHED W/ POLYESTER POWDER COATING.
 - 2.) 1/2" X 3 3/4" EXPANSION ANCHOR BOLTS PROVIDED FOR OPTIONS S-2 AND S-4.
- * UPCHARGE APPLIES TO SUPPORT OPTION, CONSULT YOUR LOCAL REPRESENTATIVE.

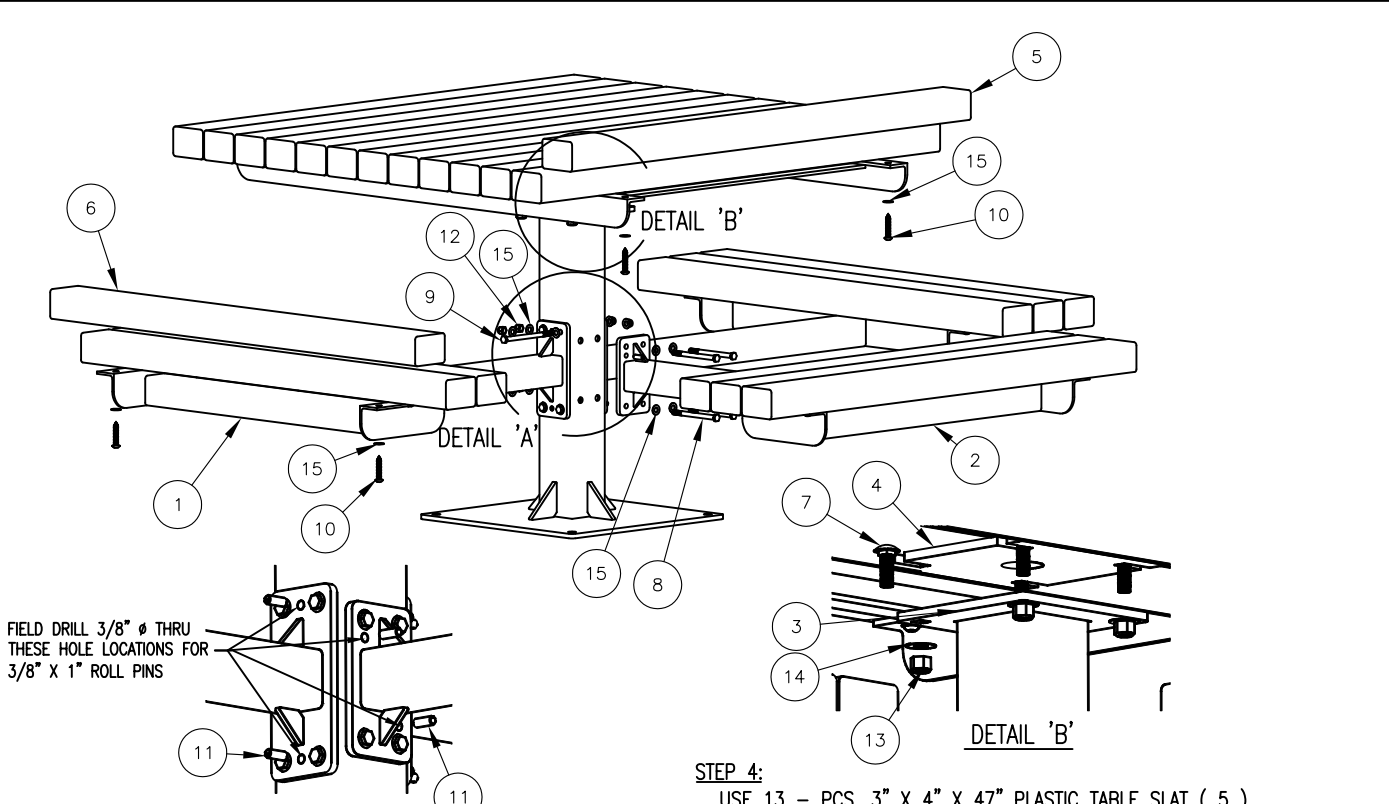
W/ 3 SEATS

- 76-33PL (3" x 4")
- 76-43PL (4" x 4")

DuMor, inc.
P.O. Box 142 Mifflintown, PA 17059-0142

SCALE :	NONE
DATE DRAWN :	1/8/00
DRAWN BY :	JSB
DATE REV. :	12/15/11
REV. BY :	ESS

TITLE :	PEDESTAL TABLE		
REV. :	H	DRAWING NUMBER	76 SERIES PL-3
			SHEET 1 OF 2



FIELD DRILL 3/8" Ø THRU THESE HOLE LOCATIONS FOR 3/8" X 1" ROLL PINS

NOTE:

- 1.) DURING ASSEMBLY PROCEDURE; DO NOT COMPLETELY TIGHTEN HARDWARE.
- 2.) THE ACTUAL PARTS WILL NOT BE NUMBERED: NUMBERS ONLY APPLY TO DRAWING.
- 3.) SEE SPEC. SHEET 1 FOR MOUNTING OPTION.

DETAIL 'A'

DETAIL 'B'

STEP 1:

USE 1 - PC. CTR. POST FOR SURFACE MOUNT, (3)
 1 - PC. TABLE TOP FRAME (4)
 4 - PCS. 1/2" X 1 1/2" SS. CGE. BOLT (7)
 4 - PCS. 1/2" SS. NYLON LOCK NUT (13)
 4 - PCS. 1/2" SS. FLAT WASHER (14)
 ATTACH TABLE TOP FRAME (4) TO CTR. POST FOR SURFACE MOUNT, (3) USING HARDWARE (7, 13, & 14). TIGHTEN TO SNUG FIT.

STEP 2:

USE 2 - PCS. SEAT SUPPORT ARM W/ 8" PLATE (1)
 4 - PCS. 3/8" X 5 1/2" SS. HEX HD. CAP SCR. (9)
 4 - PCS. 3/8" SS. NYLON LOCK NUT (12)
 8 - PCS. 3/8" SS. FLAT WASHER (15)
 ATTACH SEAT SUPPORT ARM W/ 8" PLATE (1) TO STEP 1 ASSEMBLY USING HARDWARE (9, 12, & 15). TIGHTEN TO SNUG FIT.

STEP 3:

USE 1 - PCS. SEAT SUPPORT ARM W/ 6 1/2" PLATE (2)
 4 - PCS. 3/8" X 5" SS. HEX HD. CAP SCR. (8)
 4 - PCS. 3/8" SS. NYLON LOCK NUT (12)
 8 - PCS. 3/8" SS. FLAT WASHER (15)
 ATTACH SEAT SUPPORT ARM W/ 8" PLATE (2) TO STEP 1 ASSEMBLY USING HARDWARE (8, 12, & 15). TIGHTEN TO SNUG FIT.

STEP 4:

USE 13 - PCS. 3" X 4" X 47" PLASTIC TABLE SLAT (5)
 9 - PCS. 3" X 4" X 43" PLASTIC SEAT SLAT (6)
 44 - PCS. 3/8" X 2" SS. BTN. SKT. HD. LAG SCR. (10)
 44 - PCS. 3/8" SS. FLAT WASHER (15)
 ATTACH 3" X 4" X 47" TABLE SLATS (5) AND 3" X 4" X 43" SEAT SLATS (6) TO STEP 2 ASSEMBLY USING HARDWARE (10 & 15). TIGHTEN TO SNUG FIT. REPEAT UNTIL ALL SLATS ARE ATTACHED.

STEP 5:

UPON COMPLETION OF TABLE ASSEMBLY SQUARE ALL COMPONENTS THEN TIGHTEN ALL HARDWARE.

STEP 6:

MOUNT AND ANCHOR AS SPECIFIED.

STEP 7:

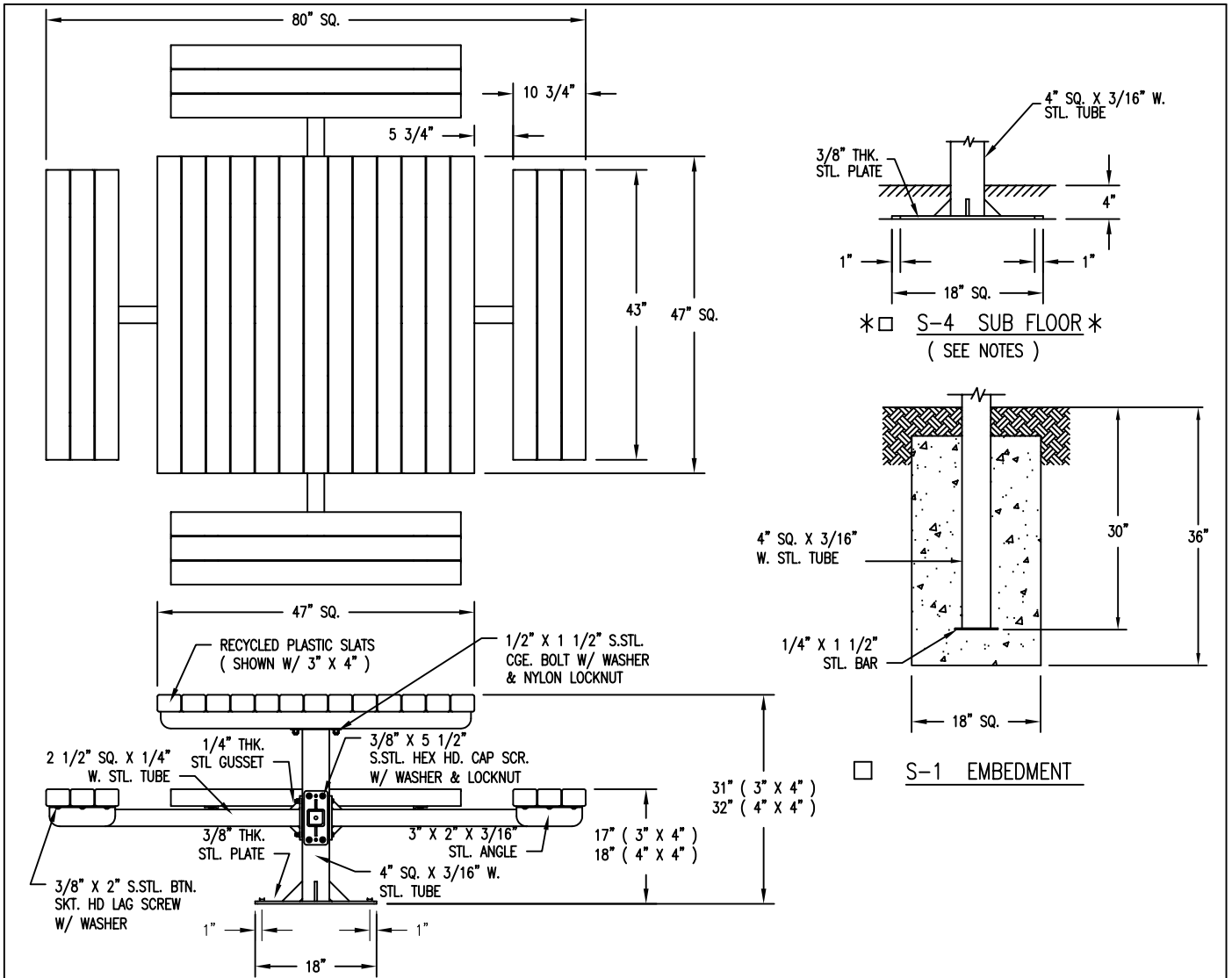
USE 6 - PCS. 3/8" X 1" S.STL. ROLL PIN (11)
 BE SURE SEAT IS LEVEL. FIELD DRILL CTR POST FOR SURFACE MOUNT (3) WITH 3/8" DRILL BIT AT SEAT SUPPORT ARMS (1 & 2) OPEN HOLE LOCATIONS. SEE DETAILS 'A' AND 'B'. DRIVE IN 3/8" X 1" ROLL PIN (11).

ITEM	QTY	PART NO	DESCRIPTION
1	2	0-76-00-05	SEAT SUPPORT ARM W/8" PLATE
2	1	0-76-00-05A	SEAT SUPPORT ARM W/6 1/2" PLATE
3	1	0-76-00-06/S-2	CTR POST FOR SURFACE MOUNT
4	1	0-76-00-07	STL TABLE TOP FRAME
5	13	0-76-30PL-01	3" X 4" X 47" PLASTIC TOP SLAT
6	9	0-76-30PL-02	3" X 4" X 43" PLASTIC SEAT SLAT
7	4	1-11-042	1/2" X 1 1/2" SS CGE BOLT
8	4	1-12-008	3/8" X 5" SS HEX HD CAP SCR
9	4	1-12-039	3/8" X 5 1/2" SS HEX HD CAP SCR
10	44	1-13-016	3/8" X 2" SS BTN SKT HD LAG SCR
11	6	1-14-003	3/8" X 1" S.STL. ROLL PIN
12	8	1-20-007	3/8" SS NYLON LOCKNUT
13	4	1-20-015	1/2" SS NYLON LOCKNUT
14	4	1-22-015	1/2" SS FLAT WASHER
15	60	1-22-024	3/8" SS FLAT WASHER

DuMor, inc.
 P.O. Box 142 Mifflintown, PA 17059-0142

SCALE : NONE
 DATE DRAWN : 1/8/00
 DRAWN BY : JSB
 DATE REV. : 12/15/11
 REV. BY : ESS

TITLE : PEDESTAL TABLE ASSEMBLY
 REV. H DRAWING NUMBER 76 SERIES PL-3 SHEET 2 OF 2



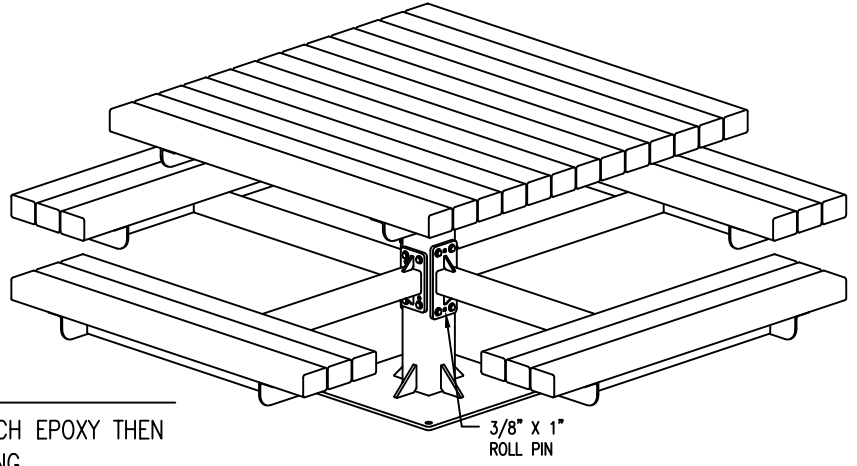
* S-2 SURFACE *
(SEE NOTES)

SLAT OPTIONS


- "CEDAR" RECYCLED PLASTIC
- "GREY" RECYCLED PLASTIC
- "REDWOOD" RECYCLED PLASTIC
- "WALNUT" RECYCLED PLASTIC
- OTHER _____

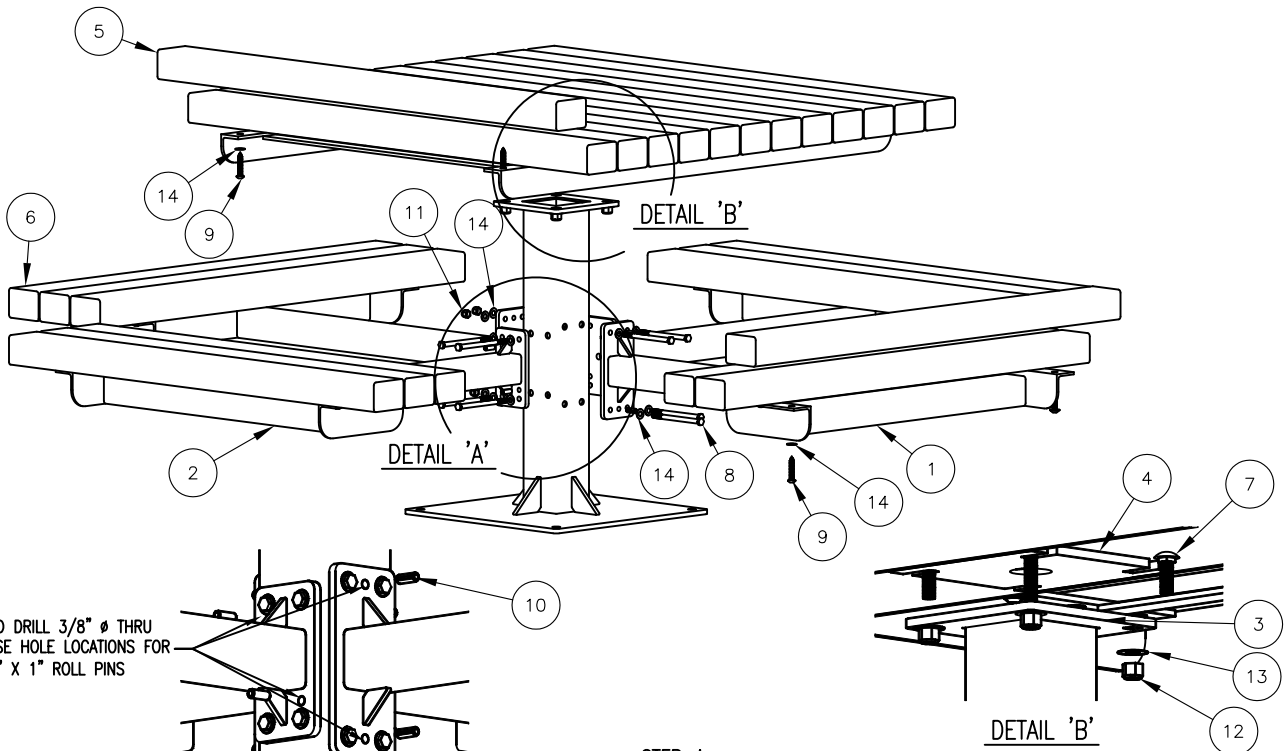
NOTES

- 1.) ALL STL. MEMBERS COATED W/ ZINC RICH EPOXY THEN FINISHED W/ POLYESTER POWDER COATING.
 - 2.) 1/2" X 3 3/4" EXPANSION ANCHOR BOLTS PROVIDED FOR OPTIONS S-2 AND S-4.
- * UPCHARGE APPLIES TO SUPPORT OPTION, CONSULT YOUR LOCAL REPRESENTATIVE.

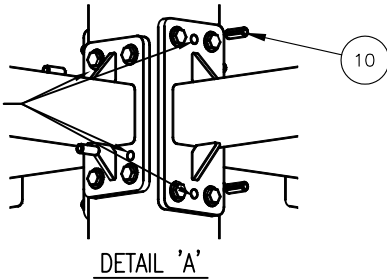


- W/ 4 SEATS
- 76-34PL (3" x 4")
 - 76-44PL (4" x 4")

 DuMor, inc. P.O. Box 142 Mifflintown, PA 17059-0142	SCALE :	NONE	TITLE :		PEDESTAL TABLE	
	DATE DRAWN :	3/22/94	REV.	DRAWING NUMBER	76 SERIES PL-4	
	DRAWN BY :	AH	K			
	DATE REV. :	12/16/11				
	REV. BY :	ESS				SHEET 1 OF 2



FIELD DRILL 3/8" Ø THRU THESE HOLE LOCATIONS FOR 3/8" X 1" ROLL PINS



DETAIL 'A'

NOTE:

- 1.) DURING ASSEMBLY PROCEDURE; DO NOT COMPLETELY TIGHTEN HARDWARE.
- 2.) THE ACTUAL PARTS WILL NOT BE NUMBERED: NUMBERS ONLY APPLY TO DRAWING.
- 3.) SEE SPEC. SHEET 1 FOR MOUNTING OPTION.

STEP 4:

- USE 13 - PCS. 3" X 4" X 47" PLASTIC TABLE SLAT (5)
 - 9 - PCS. 3" X 4" X 43" PLASTIC SEAT SLAT (6)
 - 44 - PCS. 3/8" X 2" SS. BTN. SKT. HD. LAG SCR. (9)
 - 44 - PCS. 3/8" SS. FLAT WASHER (14)
- ATTACH 3" X 4" X 47" TABLE SLATS (5) AND 3" X 4" X 43" SEAT SLATS (6) TO STEP 2 ASSEMBLY USING HARDWARE (9 & 14). TIGHTEN TO SNUG FIT. REPEAT UNTIL ALL SLATS ARE ATTACHED.

STEP 5:

UPON COMPLETION OF TABLE ASSEMBLY SQUARE ALL COMPONENTS THEN TIGHTEN ALL HARDWARE.

STEP 6:

MOUNT AND ANCHOR AS SPECIFIED.

STEP 7:

USE 8 - PCS. 3/8" X 1" S.STL. ROLL PIN (10)
BE SURE SEAT IS LEVEL. FIELD DRILL CTR POST FOR SURFACE MOUNT (3) WITH 3/8" DRILL BIT AT SEAT SUPPORT ARMS (1 & 2) OPEN HOLE LOCATIONS. SEE DETAILS 'A' AND 'B'. DRIVE IN 3/8" X 1" ROLL PIN (10).

STEP 1:

- USE 1 - PC. CTR. POST FOR SURFACE MOUNT, (3)
 - 1 - PC. TABLE TOP FRAME (4)
 - 4 - PCS. 1/2" X 1 1/2" SS. CGE. BOLT (7)
 - 4 - PCS. 1/2" SS. NYLON LOCK NUT (12)
 - 4 - PCS. 1/2" SS. FLAT WASHER (13)
- ATTACH TABLE TOP FRAME (4) TO CTR. POST FOR SURFACE MOUNT, (3) USING HARDWARE (7, 12, & 13). TIGHTEN TO SNUG FIT.

STEP 2:

- USE 2 - PCS. SEAT SUPPORT ARM W/ 8" PLATE (1)
 - 4 - PCS. 3/8" X 5 1/2" SS. HEX HD. CAP SCR. (8)
 - 4 - PCS. 3/8" SS. NYLON LOCK NUT (11)
 - 8 - PCS. 3/8" SS. FLAT WASHER (14)
- ATTACH SEAT SUPPORT ARM W/ 8" PLATE (1) TO STEP 1 ASSEMBLY USING HARDWARE (8, 11, & 14). TIGHTEN TO SNUG FIT.

STEP 3:

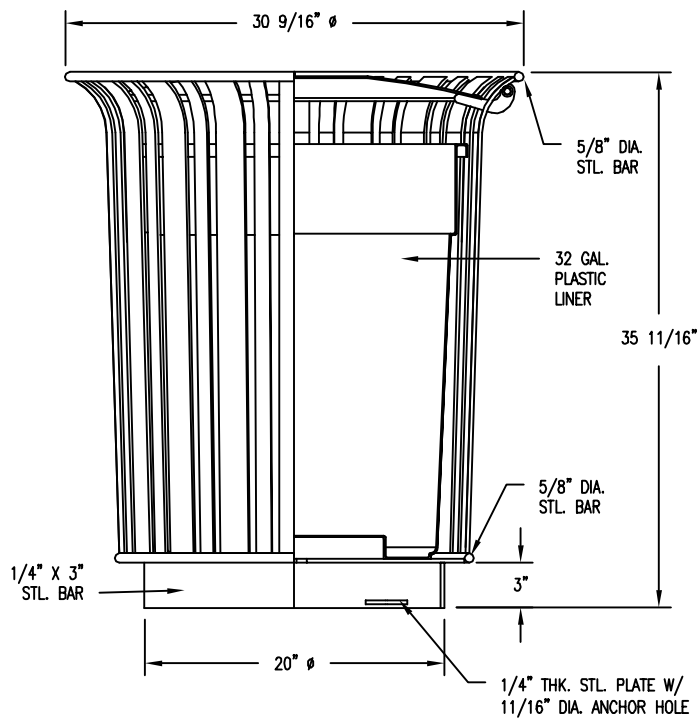
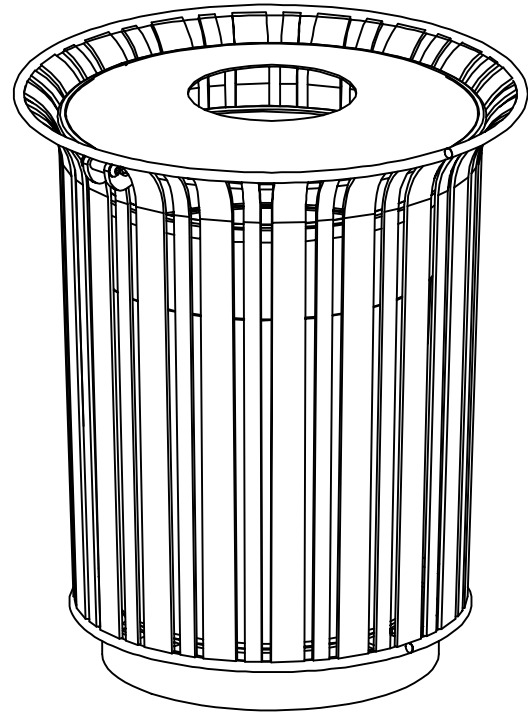
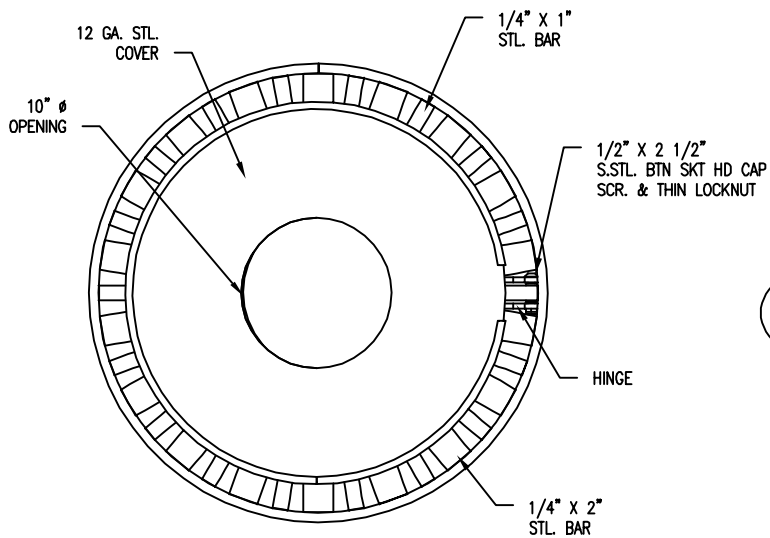
- USE 2 - PCS. SEAT SUPPORT ARM W/ 6 1/2" PLATE (2)
 - 4 - PCS. 3/8" X 5 1/2" SS. HEX HD. CAP SCR. (8)
 - 4 - PCS. 3/8" SS. NYLON LOCK NUT (11)
 - 8 - PCS. 3/8" SS. FLAT WASHER (14)
- ATTACH SEAT SUPPORT ARM W/ 8" PLATE (2) TO STEP 1 ASSEMBLY USING HARDWARE (8, 11, & 14). TIGHTEN TO SNUG FIT.

ITEM	QTY	PART NO	DESCRIPTION
1	2	0-76-00-05	SEAT SUPPORT ARM W/8" PLATE
2	2	0-76-00-05A	SEAT SUPPORT ARM W/6 1/2" PLATE
3	1	0-76-00-06/S-2	CTR POST FOR SURFACE MOUNT
4	1	0-76-00-07	STL TABLE TOP FRAME
5	13	0-76-30PL-01	3" X 4" X 47" PLASTIC TOP SLAT
6	12	0-76-30PL-02	3" X 4" X 43" PLASTIC SEAT SLAT
7	4	1-11-042	1/2" X 1 1/2" SS CGE BOLT
8	8	1-12-039	3/8" X 5 1/2" SS HEX HD CAP SCR
9	50	1-13-016	3/8" X 2" SS BTN SKT HD LAG SCR
10	8	1-14-003	3/8" X 1" S.STL. ROLL PIN
11	8	1-20-007	3/8" SS NYLON LOCKNUT
12	4	1-20-015	1/2" SS NYLON LOCKNUT
13	4	1-22-015	1/2" SS FLAT WASHER
14	66	1-22-024	3/8" SS FLAT WASHER

DuMor, inc.
P.O. Box 142 Mifflintown, PA 17059-0142

SCALE : NONE
DATE DRAWN : 3/24/94
DRAWN BY : AH
DATE REV. : 12/16/11
REV. BY : ESS

TITLE : PEDESTAL TABLE ASSEMBLY
REV. K
DRAWING NUMBER 76 SERIES PL-4
SHEET 2 OF 2



NOTES:

- 1.) ALL STL. MEMBERS COATED W/ ZINC RICH EPOXY THEN FINISHED W/ POLYESTER POWDER COATING.
- 2.) 1/2" X 3 3/4" EXPANSION ANCHOR BOLTS PROVIDED.



RECEPTACLE

DATE DRAWN : 6/20/00
 DRAWN BY : CDC
 DATE REV. : 08/20/20
 REV. BY : ESS

REV.
C

DRAWING
NUMBER

87-32-FTO

SHEET
1 OF 2

NOTES:

- 1.) DURING ASSEMBLY PROCEDURE;
DO NOT COMPLETELY TIGHTEN HARDWARE.
- 2.) THE ACTUAL PARTS WILL NOT BE NUMBERED.
NUMBERS ONLY APPLY TO DRAWING.
- 3.) UPON COMPLETION OF ASSEMBLY SQUARE
ALL COMPONENTS THEN TIGHTEN ALL HARDWARE.
- 4.) MOUNT AND ANCHOR AS SPECIFIED.

PARTS LIST

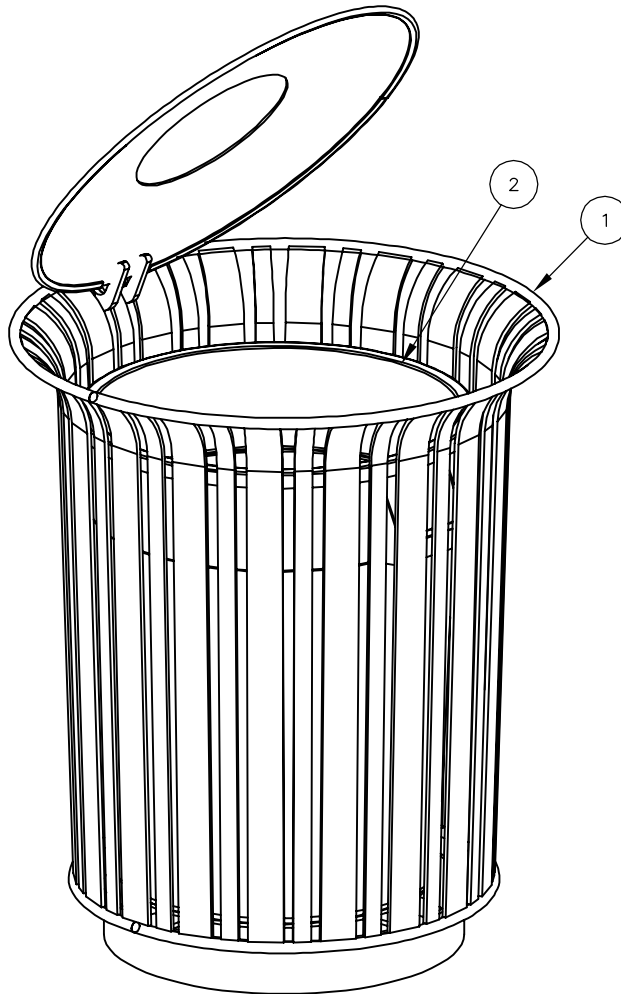
ITEM	QTY	PART NO	DESCRIPTION
1	1	0-87-30-FTO	30 GAL RECEPT W/HNGD FLT CVR
2	1	49-32	32 GAL PL LINER W/ HANDLE, BLK

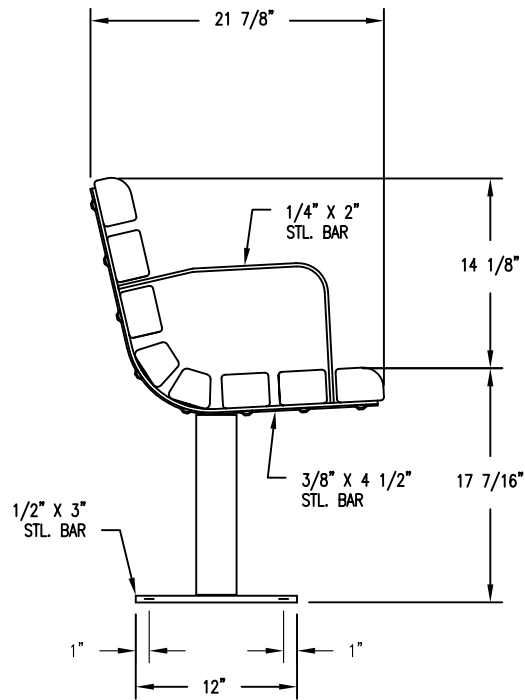
KITS PROVIDED

ITEM	QTY	PART NO	DESCRIPTION
3	1	K-ANC0860-3	1/2" X 3 3/4" SS ANCHOR KIT (3PCS)

TOOLS REQ'D

- 3/4" WRENCH
- 1/2" MASONRY DRILL BIT
- DRILL





S-2 SURFACE MOUNT

LENGTH OPTIONS

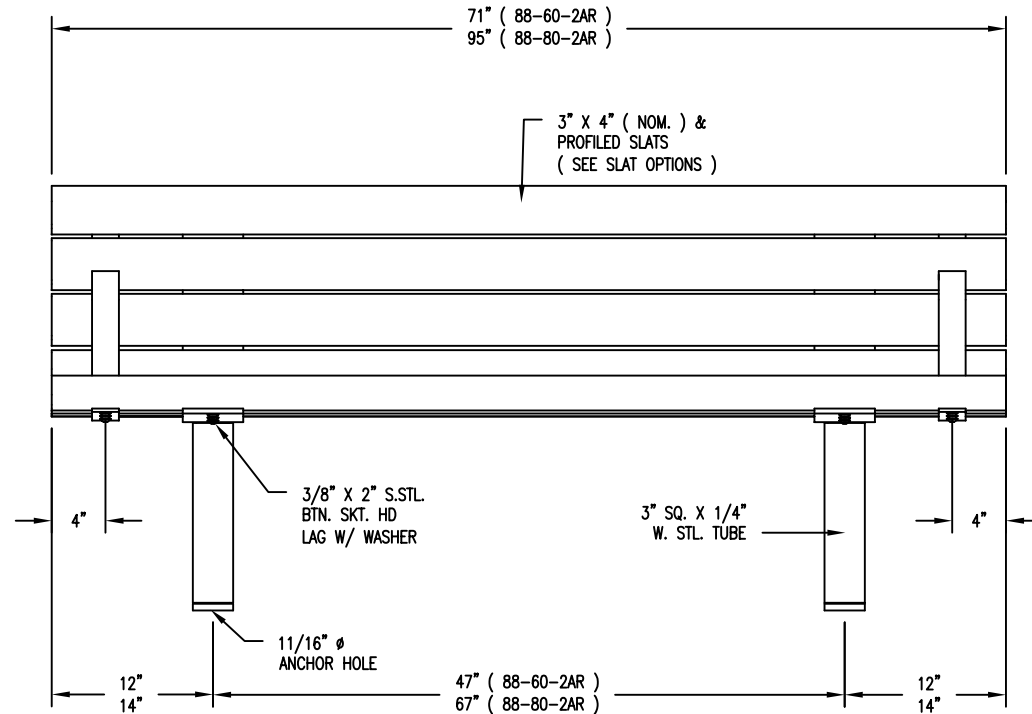
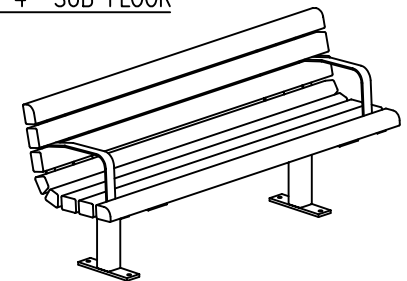
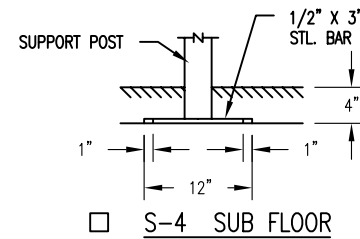
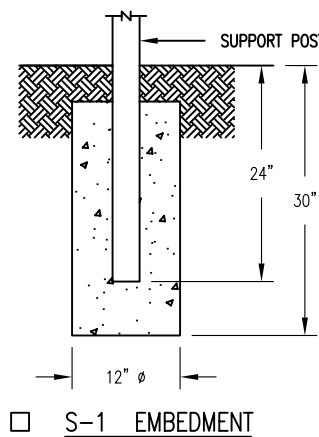
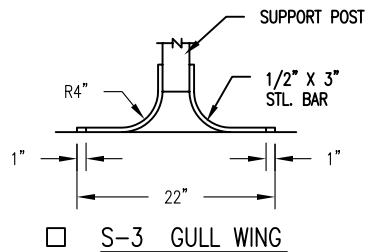
- 6' BENCH
- 8' BENCH

WOOD OPTIONS

- CLEAR ALL HEART REDWOOD S4S EE
- 'C' & BTR. DOUGLAS FIR KD S4S EE
- OTHER _____

NOTES:

- 1.) ALL STL. MEMBERS COATED W/ ZINC RICH EPOXY THEN FINISHED W/ POLYESTER POWDER COATING.
- 2.) 1/2" X 3 3/4" EXPANSION ANCHOR BOLTS PROVIDED FOR OPTIONS S-2, S-3, & S-4.



DATE DRAWN : 3/6/97

DRAWN BY : HD

DATE REV. : 12/18/09

REV. BY : AWH

TITLE

BENCH

REVISION

B

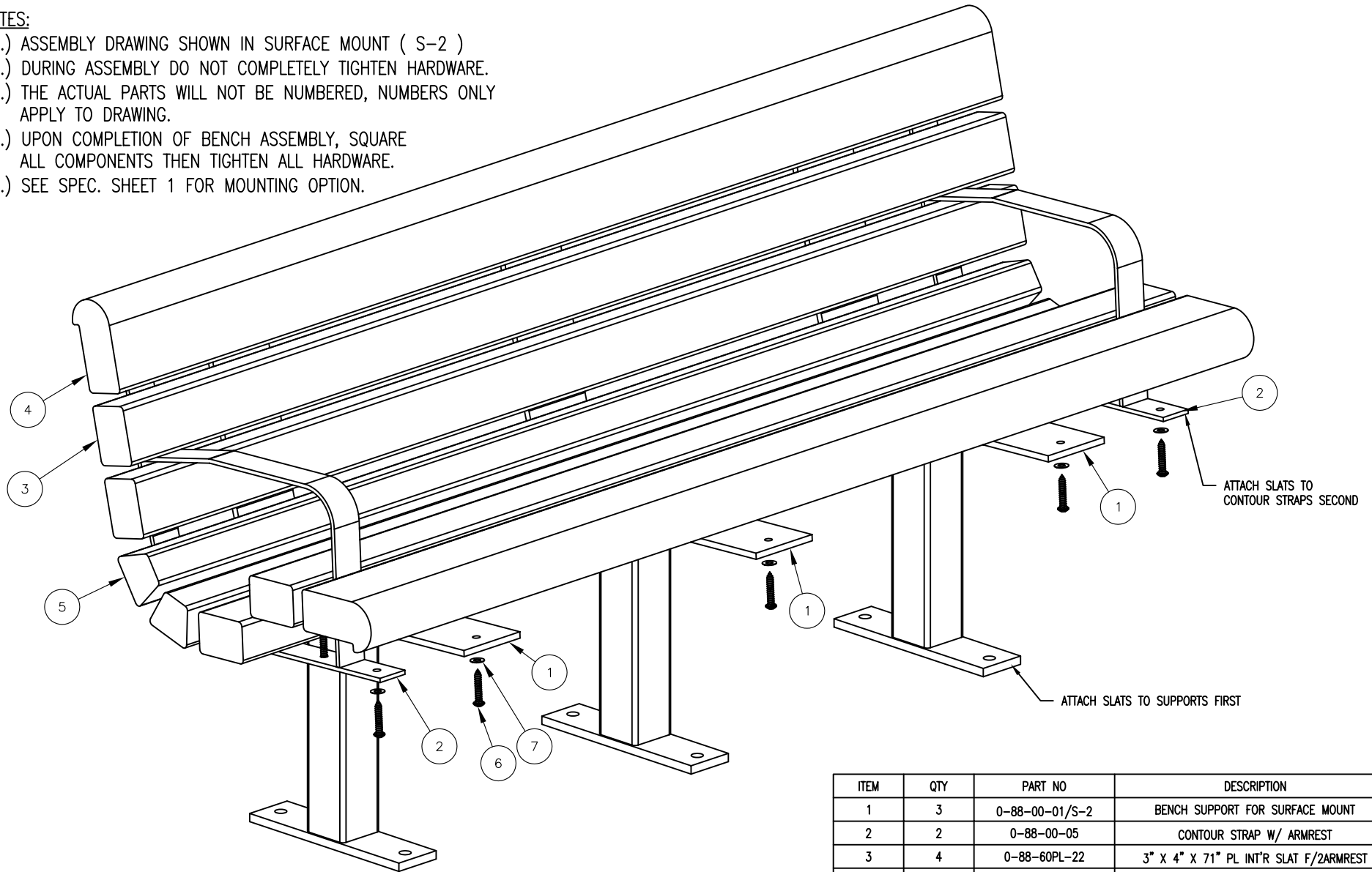
DRAWING NUMBER

88 SERIES-2AR SH1


DuMor, inc.
 P.O. Box 142 Mifflintown, PA 17059-0142

NOTES:

- 1.) ASSEMBLY DRAWING SHOWN IN SURFACE MOUNT (S-2)
- 2.) DURING ASSEMBLY DO NOT COMPLETELY TIGHTEN HARDWARE.
- 3.) THE ACTUAL PARTS WILL NOT BE NUMBERED, NUMBERS ONLY APPLY TO DRAWING.
- 4.) UPON COMPLETION OF BENCH ASSEMBLY, SQUARE ALL COMPONENTS THEN TIGHTEN ALL HARDWARE.
- 5.) SEE SPEC. SHEET 1 FOR MOUNTING OPTION.



KITS REQUIRED

ITEM	QTY	PART NO	DESCRIPTION
8	2	K-ANC0860-3	1/2" X 3 3/4" SS ANCHOR KIT (3PCS) (S-2, S-3 & S-4 ONLY)
9	1	K-BL0632-40	3/8" LAG HARDWARE KIT (40PC)

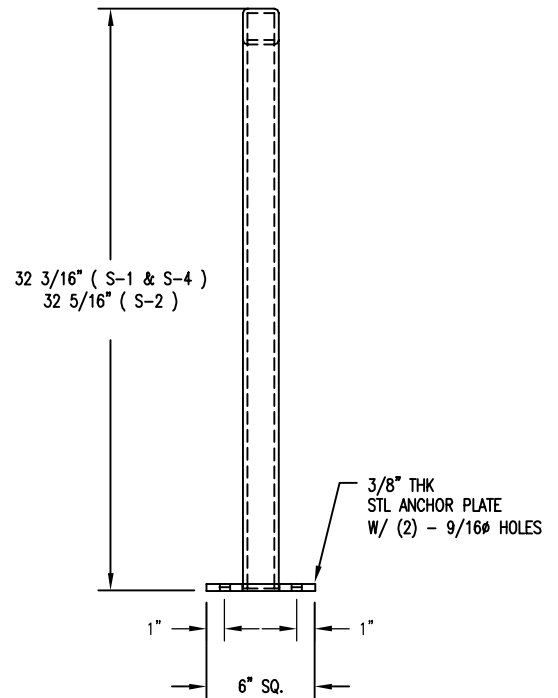
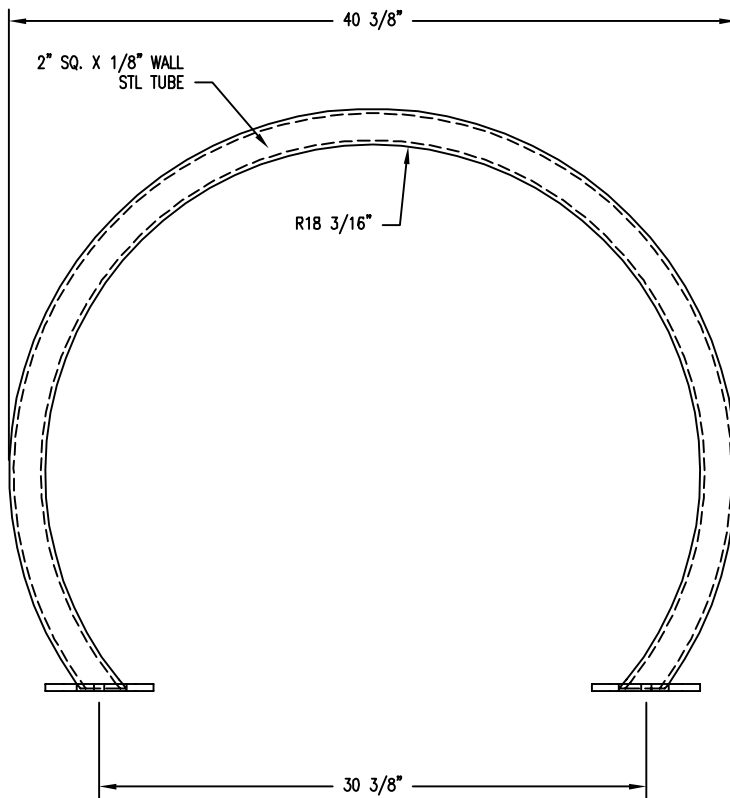
ITEM	QTY	PART NO	DESCRIPTION
1	3	0-88-00-01/S-2	BENCH SUPPORT FOR SURFACE MOUNT
2	2	0-88-00-05	CONTOUR STRAP W/ ARMREST
3	4	0-88-60PL-22	3" X 4" X 71" PL INT'R SLAT F/2ARMREST
4	2	0-88-60PL-23	71" PL EDGE SLAT FOR ARMRESTS
5	2	0-88-60PL-24	71" PLASTIC TRAP SLAT FOR ARMRESTS
6	40	1-13-016	3/8" X 2" SS BTN SKT HD LAG SCR
7	40	1-22-024	3/8" SS FLAT WASHER

DuMor, inc.
P.O. Box 142 Mifflintown, PA 17059-0142

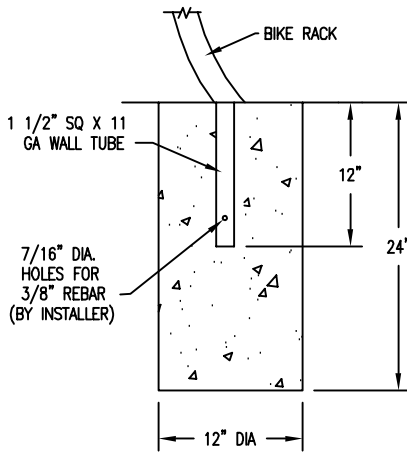
TOOLS REQ'D
3/4" WRENCH
1/4" ALLEN WRENCH
DRILL & 1/2" MASONRY DRILL BIT
FOR (S-2, S-3 & S-4 ONLY)

DATE DRAWN : 09/05/08
DRAWN BY : ESS
DATE REV. :
REV. BY :

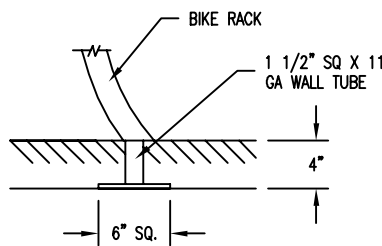
TITLE
INSTALLATION
REVISION **A** DRAWING NUMBER **88 SERIES-PL 2AR SH2**



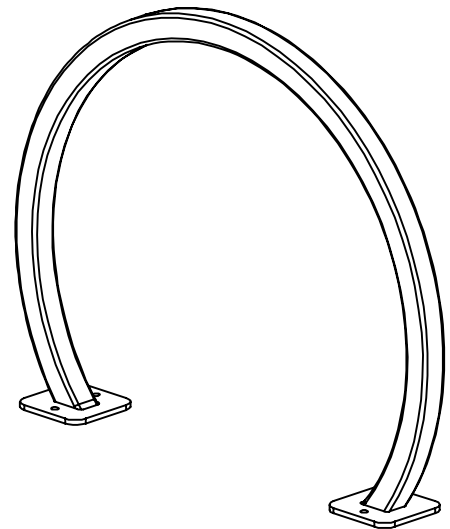
S-2 SURFACE MOUNT



S-1 EMBEDMENT



S-4 SUB FLOOR



NOTE:

- 1.) ALL STL. MEMBERS COATED W/ ZINC RICH EPOXY THEN FINISHED W/ POLYESTER POWDER COATING.
- 2.) 1/2" X 3 3/4" EXPANSION ANCHOR BOLTS PROVIDED FOR OPTIONS S-2 & S-4.

PARTS LIST FOR S-2

ITEM	QTY	PART NO	DESCRIPTION
1	1	0-293-00-01/S-2	36 3/8" I.D. BIKE LOOP FOR SURFACE MOUNT

NOTES:

1.) MOUNT AND ANCHOR AS SPECIFIED.

TOOLS REQ'D

3/4" WRENCH
 1/2" MASONRY DRILL BIT
 DRILL

KITS PROVIDED FOR S-2

ITEM	QTY	PART NO	DESCRIPTION
2	1	K-ANCO860-4	1/2" X 3 3/4" SS ANCHOR KIT (4PC)

①

