

GLEN ELLYN PARK DISTRICT

summer camp guide

2026

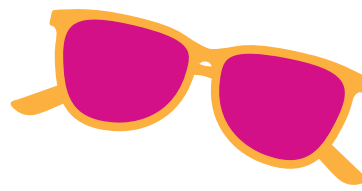


GLEN ELLYN
PARK DISTRICT

Registration
begins Saturday,
February 7 *at* 8am

  [gepark.org](https://www.gepark.org)

we're here to help!



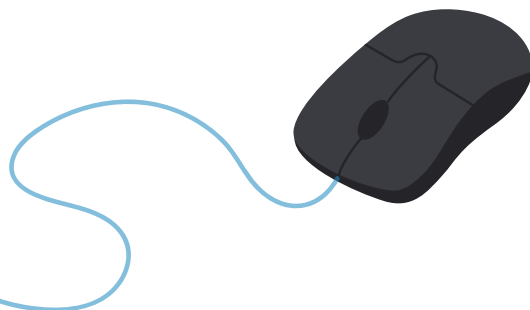
Find the staff code at the end of activity descriptions to identify the correct contact person in this directory.

Website gepark.org

Closure/Cancellation Hotline..... gepark.org/hotline

Executive Director's Office			Code
Executive Director	Dave Thommes	dthommes@gepark.org	-
Board Secretary & Directors' Assistant	Kimberly Dikker	kdikker@gepark.org	(kd)
Finance & Personnel Department			
Deputy Executive Director	Nick Cinquegrani	ncinquegrani@gepark.org	(nc)
Accounting Manager	Cathy Yocum	cyocum@gepark.org	(cy)
Human Resources & Risk Manager	Susan McLaughlin	smclaughlin@gepark.org	(sm)
Recreation Department			
Director of Recreation & Facilities	Stacey Lim	slim@gepark.org	(sl)
Superintendent of Athletics	Clint Babicz	cbabicz@gepark.org	(cb)
Superintendent of Recreation Services	David MacDonald	dmacdonald@gepark.org	(dm)
Facility Manager of Ackerman SFC	Brad Thomas	bthomas@gepark.org	(bt)
Assistant Facility Manager of Ackerman SFC	Dave Rowland	drowland@gepark.org	(dr)
Operations Manager of Ackerman SFC	Jay Diener	jdiener@gepark.org	(jd)
Fitness Manager of Ackerman SFC	Amber Bieberstein	abieberstein@gepark.org	(ab)
Manager of Athletics	Dan Tripp	dtripp@gepark.org	(dt)
Manager of Cultural Arts, Camps & Seniors	Anastasia Aubie	aaubie@gepark.org	(aa)
Manager of Early Childhood Services	Katy Speck	kspeck@gepark.org	(ks)
Registration & Guest Services Manager	Koshie Mills	kmills@gepark.org	(km)
Special Facilities Manager	Lisa Semetko	lsemetko@gepark.org	(ls)
Parks & Planning Department			
Director of Planning and Natural Resources	Nathan Troia	ntroia@gepark.org	(nt)
Superintendent of Parks & Facilities Operations	Scott Norman	snorman@gepark.org	(sn)
Downtown Park Events & Sponsorship Manager	Susan Smentek	ssmentek@gepark.org	(ss)
Manager of Natural Areas and Outdoor Education	Chris Gutmann	cgutmann@gepark.org	(cg)
Environmental Outreach Specialist	Laurie Bellmar	lbellmar@gepark.org	(lb)
Facility Maintenance Specialist	Paul Pitts	ppitts@gepark.org	(pp)
Marketing Division			
Superintendent of Marketing & Communications	Courtney OKray	cokray@gepark.org	(co)

how to register



the fastest way to register is online.

For registration assistance, call our registration offices at (630) 942-7280 or email registration@gepark.org.

first time registering?

You can create an account online at gepark.org/register or visit Spring Avenue Recreation Center, Main Street Recreation Center, or Ackerman Sports and Fitness Center during registration office hours and Park District staff will assist you. You may be asked to provide proof of residency for all household members being added to the account.

already have an account?

Visit anc.apm.activecommunities.com/gepark/home to access the online registration portal directly, or go to gepark.org and click on the register button. Log in. Once logged in, you can go to My Account by clicking your name. Here, you can update your household information, check your purchase history, print your childcare tax receipt and other reports, or change your login information. Note: You cannot withdraw from or transfer an activity, update a family member's birth date, or change your home address.

locked out of your account?

Account lockouts happen when you incorrectly enter your password too many times or if you have past due fees. To unlock your account, please call (630) 942-7280 or email registration@gepark.org during registration office hours.

activity codes

The series of numbers beneath each activity description corresponds to that activity session. Please use this code when registering.

minimums and maximums

Each activity and activity session has a set minimum and maximum number of participants based on providing quality instruction, space availability, supplies, number of instructors, and other factors. For some activities, we may be able to accommodate the wait list or add an extra session, while we may not be able to do so for others. Activities may reach the maximum prior to the registration deadline, if indicated. Activities not meeting the minimum registration may be canceled, and patrons will be notified.

fee assistance/scholarship program

Financial assistance is available to all Glen Ellyn Park District residents that qualify. Funds can be used toward the fees of activities, events, and memberships. For more details, visit gepark.org/financial-aid.

camp registration start dates and times

residents (in district):

Saturday, February 7, 2026 at 8am

nonresidents (out of district):

Saturday, February 14, 2026 at 8am



three easy ways to register

Registration is first-come, first-served.
Here are the ways you can register:



Online or Through This Playbook

Click the activity code in the digital Playbook. Or, you can visit gepark.org/register to browse and register for activities.



In Person or Drop-Off Form

Register in-person or drop-off your form at Spring Avenue Recreation Center, Main Street Recreation Center, and Ackerman Sports and Fitness Center during registration office hours.

Visit gepark.org to check for any special hours.

	Spring Avenue Recreation Center 185 Spring Ave.	Main Street Recreation Center 501 Hill Ave.	Ackerman Sports & Fitness Center 800 St. Charles Rd.
Monday	8:30am-5pm	8:30am-8pm	8:30am-9pm
Tuesday	8:30am-5pm	8:30am-8pm	8:30am-9pm
Wednesday	8:30am-7pm	8:30am-8pm	8:30am-9pm
Thursday	8:30am-7pm	8:30am-8pm	8:30am-9pm
Friday	8:30am-5pm	8:30am-5pm	8:30am-9pm
Saturday	9am-12pm	9am-12pm	7am-7pm
Sunday	Closed	Closed	7am-7pm



Mail/Fax

Mail your form to:

Glen Ellyn Park District, Registration
185 Spring Avenue Glen Ellyn, IL 60137

Fax to: (630) 389-8527





frequently asked questions

am I considered a resident (in district) or a nonresident (out of district)?

To determine the Park District in which you reside, please consult your tax bills, or call or email our Registration Office. Please note that Glen Ellyn Park District boundaries do not align with Village of Glen Ellyn boundaries.

which payment methods are accepted?

We accept Visa, MasterCard, Discover and American Express for online, in-person, mail, and fax registrations. For in-person registrations, we also accept checks made payable to the Glen Ellyn Park District as well as cash.

do you make age exceptions for events and programs?

If you would like to request an age exception for your child, please call (630) 942-7280 or email registration@gepark.org during regular registration office hours. If approved by the supervisor, you must register for the class in person at the Spring Avenue or Main Street Recreation Centers. Online registration with an age exception is not available.

how do I withdraw from an activity or get a refund?

Refunds, cancellations, and withdrawals cannot be completed through the online registration portal. To request a refund, you may:

- Call (630) 942-7280
- Email registration@gepark.org
- Submit the Refund Request Form at gepark.org/refund

A new refund policy took effect on January 1, 2026. For details on refund deadlines, service fees, non-refundable items, and other guidelines, please see the District Policies section.

how do I get on the waitlist for a class?

On the activity's online registration page, click on '+ Waiting List' and follow the on-screen instructions. There is no fee to join the waitlist. If a spot becomes available, we will contact you for payment. If we are unable to reach you within 24 hours, we will move on to the next person on the list. Placing your name on the waiting list is recommended, but it does not guarantee admission into the activity.

What is ePACT?

ePACT is a secure health and safety platform used by several Glen Ellyn Park District camps to collect important emergency contact and medical information electronically.

stay informed

park district hotline

Stay informed about activity/event cancellations or facility closures due to adverse weather or other factors by utilizing the Glen Ellyn Park District's hotline, powered by Rainout Line, at gepark.org/hotline.

subscribe to our e-newsletter

Receive the most up-to-date info on activities, events, and more. Sign up at gepark.org/enews

follow us on social media

@glenellynparks on Facebook, Instagram, and X (formerly Twitter).

Mark your calendar with Playbook release dates

Look for upcoming editions of our Playbook at gepark.org/playbook.

SUMMER PLAYBOOK 2026: April 22, 2026

AUTUMN PLAYBOOK 2026: July 15, 2026

WINTER PLAYBOOK 2027: October 21, 2026

The District reserves the right to change the release dates above.

looking for even more fun?

Activities are added throughout the year and may not be featured at the time of publication. Visit gepark.org/register to explore additional offerings.

abbreviation key

R: Resident
NR: Nonresident
M: Member
NM: Non-member

refund policy update:

As part of our commitment to continually improving the programs and services we offer, the Glen Ellyn Park District has recently updated our refund policy, which can be viewed at gepark.org/policies-ordinances or in the District Policies section of this Playbook. This updated policy took effect on January 1, 2026.

This decision was made after careful review to ensure we can responsibly manage resources, plan effectively for programs, and continue providing high-quality experiences for everyone in our community. The updated policy allows us to better support staffing, facility use, and program preparation, all of which are essential to running the events and activities you enjoy. It also gives us the flexibility to accommodate waiting lists more efficiently, helping as many participants as possible take part in popular programs.

Our goal is always to serve you better, and we appreciate your understanding and support.

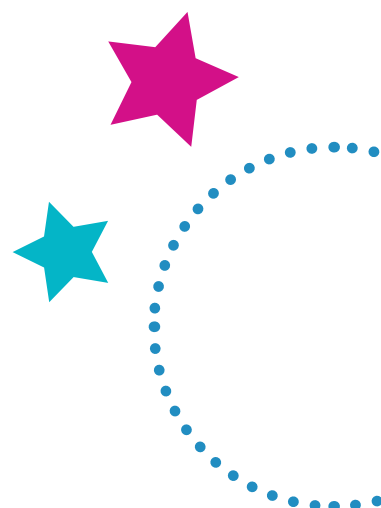
If you have any questions about the new policy, we encourage you to reach out to our team—we're here to help. Thank you for being a valued part of our park district community!



board of commissioners

For the Board meeting schedule, visit gepark.org/board-meetings.

Julia Nephew	President
Mary Crickmore	Vice President
Michael Ward	Treasurer
Jeremy Boynton	Commissioner
Kathy Cornell	Commissioner
Alex Durham	Commissioner
Ben Stortz	Commissioner



Camp Caravan

Ages 6-12

Campers will enjoy a summer packed full of exciting activities that will include games, crafts, outdoor activities, and so much more! Campers will swim over at Sunset Pool Monday through Wednesday and off-site field trips are taken every Friday. Every Thursday Camp Caravan will host weekly on-site entertainment such as magicians, bubble shows, and more. Adults who need to get to work early or stay late can take advantage of our pre-camp and/or post-camp hours. Camper forms must be completed, via ePACT, prior to your child attending camp. Camp Caravan drop-off and pick-up will always be from the Main Street Recreation Center. Late drop-off and early pick-up are not allowed unless given approval. (aa)

Intro to Camp Caravan

Ease into a summer of fun with this shorter camp week. Must meet the age requirement by September 1, 2026. (aa)

#/Link	Day	Date	Time	R/NR
138756	Tu-F	6/9-6/12	8:30am-3:30pm	\$220/\$280
138798	Tu	6/9	8:30am-3:30pm	\$50/\$65
138804	W	6/10	8:30am-3:30pm	\$50/\$65
138807	Th	6/11	8:30am-3:30pm	\$50/\$65
138809	F	6/12	8:30am-3:30pm	\$50/\$65

Camp Caravan Registration

Choose between the 3-day or 5-day full week options. Registration will close one week prior to the start of camp. Fees will not be prorated for any missed days or vacations. Camper forms must be completed, via ePACT, prior to your child attending camp. Instructions will be sent to your email. Must meet the age requirement by September 1, 2026. Location: Main Street Recreation Center. No camp on 7/2 or 7/3. (aa)

#/Link	Day	Date	Time	R/NR
138757	M-F	6/15-6/19	8:30am-3:30pm	\$260/\$338
138764	Tu-Th	6/16-6/18	8:30am-3:30pm	\$193/\$251
138758	M-F	6/22-6/26	8:30am-3:30pm	\$260/\$338
138765	Tu-Th	6/23-6/25	8:30am-3:30pm	\$193/\$251
138766	M-W	6/29-7/1	8:30am-3:30pm	\$193/\$251
138759	M-F	7/6-7/10	8:30am-3:30pm	\$260/\$338
138768	Tu-Th	7/7-7/9	8:30am-3:30pm	\$193/\$251
138760	M-F	7/13-7/17	8:30am-3:30pm	\$260/\$338
138769	Tu-Th	7/14-7/16	8:30am-3:30pm	\$193/\$251
138761	M-F	7/20-7/24	8:30am-3:30pm	\$260/\$338
138770	Tu-Th	7/21-7/23	8:30am-3:30pm	\$193/\$251
138762	M-F	7/27-7/31	8:30am-3:30pm	\$260/\$338
138771	Tu-Th	7/28-7/30	8:30am-3:30pm	\$193/\$251
138763	M-F	8/3-8/7	8:30am-3:30pm	\$260/\$338
138772	Tu-Th	8/4-8/6	8:30am-3:30pm	\$193/\$251



GLEN ELLYN PARK DISTRICT • 7

Resident registration begins at 8am on Saturday, February 7, 2026

Pre & Post Camp Registration

Need to extend your camper's day by a few hours? Enroll in our pre or post camp options. Your child must also be registered for a 3-day or week option of Camp Caravan to register for Pre/Post camp. Pre-camp drop-off and post-camp pick-up is at Main Street Recreation Center. Must meet the age requirement by September 1, 2026. No camp on 7/2 or 7/3. (aa)

Pre-Camp

#/Link	Day	Date	Time	R/NR
138814	M-F	6/15-6/19	7-8:30am	\$60/\$85
138815	Tu-Th	6/16-6/18	7-8:30am	\$40/\$55
138862	M-F	6/22-6/26	7-8:30am	\$60/\$85
138868	Tu-Th	6/23-6/25	7-8:30am	\$40/\$55
138869	M-W	6/29-7/1	7-8:30am	\$40/\$55
138863	M-F	7/6-7/10	7-8:30am	\$60/\$85
138870	Tu-Th	7/7-7/9	7-8:30am	\$40/\$55
138864	M-F	7/13-7/17	7-8:30am	\$60/\$85
138871	Tu-Th	7/14-7/16	7-8:30am	\$40/\$55
138865	M-F	7/20-7/24	7-8:30am	\$60/\$85
138872	Tu-Th	7/21-7/23	7-8:30am	\$40/\$55
138866	M-F	7/27-7/31	7-8:30am	\$60/\$85
138873	Tu-Th	7/28-7/30	7-8:30am	\$40/\$55
138867	M-F	8/3-8/7	7-8:30am	\$60/\$85
138874	Tu-Th	8/4-8/6	7-8:30am	\$40/\$55

Post-Camp

#/Link	Day	Date	Time	R/NR
138883	M-F	6/15-6/19	3:30-6pm	\$75/\$95
138875	Tu-Th	6/16-6/18	3:30-6pm	\$50/\$65
138884	M-F	6/22-6/26	3:30-6pm	\$75/\$95
138876	Tu-Th	6/23-6/25	3:30-6pm	\$50/\$65
138877	M-W	6/29-7/1	3:30-6pm	\$50/\$65
138885	M-F	7/6-7/10	3:30-6pm	\$75/\$95
138878	Tu-Th	7/7-7/9	3:30-6pm	\$50/\$65
138886	M-F	7/13-7/17	3:30-6pm	\$75/\$95
138879	Tu-Th	7/14-7/16	3:30-6pm	\$50/\$65
138887	M-F	7/20-7/24	3:30-6pm	\$75/\$95
138880	Tu-Th	7/21-7/23	3:30-6pm	\$50/\$65
138888	M-F	7/27-7/31	3:30-6pm	\$75/\$95
138881	Tu-Th	7/28-7/30	3:30-6pm	\$50/\$65
138889	M-F	8/3-8/7	3:30-6pm	\$75/\$95
138882	Tu-Th	8/4-8/6	3:30-6pm	\$50/\$65

Intro to Turf & Surf

Ages 9-11

Campers will enjoy the freedom of jumping on their bikes and heading out to local destinations, three to five miles in distance one way. Mondays through Fridays, campers will also swim at Sunset Pool. This program combines education and hands-on experiences to prepare you for the future weeks in Turf & Surf Camp. All campers are required to have a bike, bike lock, helmet, water bottle, backpack, sack lunch, and snacks every day. Camper forms must be completed, via ePACT, prior to your child attending camp. Instructions will be sent to your email. Registration will close each Friday at 12pm for the following week of camp. No camp from 7/2-7/3. Location: Main Street Recreation Center. (aa)

Blue Age 9

#/Link	Day	Date	Time	R/NR
138890	M-F	6/15-6/19	8:45am-2:45pm	\$240/\$312
138898	M-F	6/22-6/26	8:45am-2:45pm	\$240/\$312
138899	M-W	6/29-7/1	8:45am-2:45pm	\$144/\$188
138900	M-F	7/6-7/10	8:45am-2:45pm	\$240/\$312
138901	M-F	7/13-7/17	8:45am-2:45pm	\$240/\$312
138902	M-F	7/20-7/24	8:45am-2:45pm	\$240/\$312
138903	M-F	7/27-7/31	8:45am-2:45pm	\$240/\$312
138904	M-F	8/3-8/7	8:45am-2:45pm	\$240/\$312

Green Age 10

#/Link	Day	Date	Time	R/NR
138891	M-F	6/15-6/19	8:45am-2:45pm	\$240/\$312
138905	M-F	6/22-6/26	8:45am-2:45pm	\$240/\$312
138906	M-W	6/29-7/1	8:45am-2:45pm	\$144/\$188
138907	M-F	7/6-7/10	8:45am-2:45pm	\$240/\$312
138908	M-F	7/13-7/17	8:45am-2:45pm	\$240/\$312
138909	M-F	7/20-7/24	8:45am-2:45pm	\$240/\$312
138910	M-F	7/27-7/31	8:45am-2:45pm	\$240/\$312
138911	M-F	8/3-8/7	8:45am-2:45pm	\$240/\$312

Purple Age 10-11

#/Link	Day	Date	Time	R/NR
138912	M-F	6/15-6/19	8:45am-2:45pm	\$240/\$312
138913	M-F	6/22-6/26	8:45am-2:45pm	\$240/\$312
138914	M-W	6/29-7/1	8:45am-2:45pm	\$144/\$188
138915	M-F	7/6-7/10	8:45am-2:45pm	\$240/\$312
138916	M-F	7/13-7/17	8:45am-2:45pm	\$240/\$312
138917	M-F	7/20-7/24	8:45am-2:45pm	\$240/\$312
138918	M-F	7/27-7/31	8:45am-2:45pm	\$240/\$312
138919	M-F	8/3-8/7	8:45am-2:45pm	\$240/\$312

Turf & Surf Camp

Ages 11-13

This camp is recommended for campers who have completed Introduction to Turf & Surf Camp or previous summers of Turf & Surf Camp. This on-the-road experience combines morning activities and field trips. Mondays through Thursdays, campers will also swim at Sunset Pool. Campers should have a basic understanding of bike safety and rules of the road. Riders will be expected to travel up to six miles one way to reach their daily destination. All campers are required to have a bike, bike lock, helmet, water bottle, backpack, sack lunch, and snacks every day. Camper forms must be completed, via ePACT, prior to your child attending camp. Instructions will be sent to your email. Registration will close each Friday at 12pm for the following week of camp. No camp from 7/2-7/3. Location: Spring Avenue Recreation Center. (aa)

Yellow Age 11

#/Link	Day	Date	Time	R/NR
138936	M-F	6/15-6/19	8:45am-2:45pm	\$240/\$312
138937	M-F	6/22-6/26	8:45am-2:45pm	\$240/\$312
138938	M-W	6/29-7/1	8:45am-2:45pm	\$144/\$188
138939	M-F	7/6-7/10	8:45am-2:45pm	\$240/\$312
138940	M-F	7/13-7/17	8:45am-2:45pm	\$240/\$312
138941	M-F	7/20-7/24	8:45am-2:45pm	\$240/\$312
138942	M-F	7/27-7/31	8:45am-2:45pm	\$240/\$312
138943	M-F	8/3-8/7	8:45am-2:45pm	\$240/\$312

Red Age 12-13

#/Link	Day	Date	Time	R/NR
138928	M-F	6/15-6/19	8:45am-2:45pm	\$240/\$312
138929	M-F	6/22-6/26	8:45am-2:45pm	\$240/\$312
138930	M-W	6/29-7/1	8:45am-2:45pm	\$144/\$188
138931	M-F	7/6-7/10	8:45am-2:45pm	\$240/\$312
138932	M-F	7/13-7/17	8:45am-2:45pm	\$240/\$312
138933	M-F	7/20-7/24	8:45am-2:45pm	\$240/\$312
138934	M-F	7/27-7/31	8:45am-2:45pm	\$240/\$312
138935	M-F	8/3-8/7	8:45am-2:45pm	\$240/\$312

Orange Ages 11-12

#/Link	Day	Date	Time	R/NR
138920	M-F	6/15-6/19	8:45am-2:45pm	\$240/\$312
138921	M-F	6/22-6/26	8:45am-2:45pm	\$240/\$312
138922	M-W	6/29-7/1	8:45am-2:45pm	\$144/\$188
138923	M-F	7/6-7/10	8:45am-2:45pm	\$240/\$312
138924	M-F	7/13-7/17	8:45am-2:45pm	\$240/\$312
138925	M-F	7/20-7/24	8:45am-2:45pm	\$240/\$312
138926	M-F	7/27-7/31	8:45am-2:45pm	\$240/\$312
138927	M-F	8/3-8/7	8:45am-2:45pm	\$240/\$312



GLEN ELLYN PARK DISTRICT Hotline (Rainout Line)

Stay informed about program/event cancellations or facility closures due to adverse weather or other factors by utilizing the Glen Ellyn Park District's hotline, powered by Rainout Line.

Scan Me



Ackerman Summer Camp

Ages 6-14

Camp themes will be focused on for one hour every day followed by sports and fun for the following two hours. Register for the morning, afternoon or both. Weather permitting, our summer camp activities will plan on moving for the upcoming week to fully embrace the summer weather and engage in nature exploration and various outdoor games. Wear comfortable clothing, sport some closed-toed shoes, and bring water and a nut-free snack to camp each day. (dr)

Nature Unleashed

Want to know more about mother nature? Let's get outside and explore! Campers make nature crafts and enjoy nature-themed snacks during this action-packed camp. Camp also focuses on being environmentally friendly.

#/Link	Age	Day	Date	Time	R/NR
138707	6-9	Tu-F	6/9-6/12	9am-3:30pm	\$230/\$340
138703	6-9	Tu-F	6/9-6/12	9am-12pm	\$110/\$160
138706	6-9	Tu-F	6/9-6/12	12:30pm-3:30pm	\$110/\$160
138708	10-14	Tu-F	6/9-6/12	9am-3:30pm	\$230/\$340
138714	10-14	Tu-F	6/9-6/12	9am-12pm	\$110/\$160
138705	10-14	Tu-F	6/9-6/12	12:30pm-3:30pm	\$110/\$160

Celebrate the Decades

Travel through the 70's, 80's, 90's and 2000's! Campers travel back in time and listen to music from the decade featured each day, play games and complete crafts and activities to learn more about each of these decades. All campers are encouraged to dress in 90's attire.

#/Link	Age	Day	Date	Time	R/NR
138711	6-9	M-F	6/15-6/19	9am-3:30pm	\$230/\$340
138709	6-9	M-F	6/15-6/19	9am-12pm	\$110/\$160
138710	6-9	M-F	6/15-6/19	12:30pm-3:30pm	\$110/\$160
138713	10-14	M-F	6/15-6/19	9am-3:30pm	\$230/\$340
138704	10-14	M-F	6/15-6/19	9am-12pm	\$110/\$160
138712	10-14	M-F	6/15-6/19	12:30pm-3:30pm	\$110/\$160

Little Einstein

Discover the amazing world of STEM! Our young scientists will learn how to make electric Play-Doh, Silly Putty, and even Glow in the dark Goo. Students will then work in teams to create elaborate Hot Wheels test courses complete with huge ramps, curves, loops and jumps to deepen their understanding of potential and kinetic energy. Get started with STEM.

#/Link	Age	Day	Date	Time	R/NR
138719	6-9	M-F	6/22-6/26	9am-3:30pm	\$230/\$340
138716	6-9	M-F	6/22-6/26	9am-12pm	\$110/\$160
138715	6-9	M-F	6/22-6/26	12:30pm-3:30pm	\$110/\$160
138720	10-14	M-F	6/22-6/26	9am-3:30pm	\$230/\$340
138717	10-14	M-F	6/22-6/26	9am-12pm	\$110/\$160
138718	10-14	M-F	6/22-6/26	12:30pm-3:30pm	\$110/\$160

Safari

We will explore the lives, habitats and conservation of animals around the world. Includes exciting hands-on activities, lessons, and craft projects.

#/Link	Age	Day	Date	Time	R/NR
138726	6-9	M-F	6/29-7/3	9am-3:30pm	\$230/\$340
138721	6-9	M-F	6/29-7/3	9am-12pm	\$110/\$160
138722	6-9	M-F	6/29-7/3	12:30pm-3:30pm	\$110/\$160
138725	10-14	M-F	6/29-7/3	9am-3:30pm	\$230/\$340
138724	10-14	M-F	6/29-7/3	9am-12pm	\$110/\$160
138723	10-14	M-F	6/29-7/3	12:30pm-3:30pm	\$110/\$160

Shark Week

This camp will introduce children to shark biology through hands on activities, marine life conservation and swim lessons. Our camp will visit Sunset Pool as we learn about important safety swim lessons. Join us while we take a bite out of summer.

#/Link	Age	Day	Date	Time	R/NR
138731	6-9	M-F	7/6-7/10	9am-3:30pm	\$230/\$340
139037	6-9	M-F	7/6-7/10	9am-12pm	\$110/\$160
138727	6-9	M-F	7/6-7/10	12:30pm-3:30pm	\$110/\$160
138730	10-14	M-F	7/6-7/10	9am-3:30pm	\$230/\$340
138729	10-14	M-F	7/6-7/10	9am-12pm	\$110/\$160
138728	10-14	M-F	7/6-7/10	12:30pm-3:30pm	\$110/\$160

Ackerman Summer Camp continued...

Sports Around the World

Kids learn and play some popular sports from around the world as they participate in a variety of new sports. Get the kids outside and have them play sports and other fun activities during this camp.

#/Link	Age	Day	Date	Time	R/NR
138736	6-9	M-F	7/13-7/17	9am-3:30pm	\$230/\$340
138735	6-9	M-F	7/13-7/17	9am-12pm	\$110/\$160
138734	6-9	M-F	7/13-7/17	12:30pm-3:30pm	\$110/\$160
138737	10-14	M-F	7/13-7/17	9am-3:30pm	\$230/\$340
138732	10-14	M-F	7/13-7/17	9am-12pm	\$110/\$160
138733	10-14	M-F	7/13-7/17	12:30pm-3:30pm	\$110/\$160

Build It

This camp is designed to get your engineering brain cells growing. Children will explore and learn about basic architectural concepts using Lego and other simple building materials. Children will be encouraged to build structures, large or small, and above all from their own imagination.

#/Link	Age	Day	Date	Time	R/NR
138742	6-9	M-F	7/20-7/24	9am-3:30pm	\$230/\$340
138741	6-9	M-F	7/20-7/24	9am-12pm	\$110/\$160
138740	6-9	M-F	7/20-7/24	12:30pm-3:30pm	\$110/\$160
138743	10-14	M-F	7/20-7/24	9am-3:30pm	\$230/\$340
138738	10-14	M-F	7/20-7/24	9am-12pm	\$110/\$160
138739	10-14	M-F	7/20-7/24	12:30pm-3:30pm	\$110/\$160

Magical World

Join us for a movie-themed, adventure-filled week! We'll be doing activities and games from all your favorite movies, classic and current. Fight off crime with your favorite superhero family, build a kite and fly, cook up some yummy dishes, and play some games with Ralph. In addition, campers will enjoy workshops and team games. (dr)

#/Link	Age	Day	Date	Time	R/NR
138748	6-9	M-F	7/27-7/31	9am-3:30pm	\$230/\$340
138747	6-9	M-F	7/27-7/31	9am-12pm	\$110/\$160
138746	6-9	M-F	7/27-7/31	12:30pm-3:30pm	\$110/\$160
138749	10-14	M-F	7/27-7/31	9am-3:30pm	\$230/\$340
138744	10-14	M-F	7/27-7/31	9am-12pm	\$110/\$160
138745	10-14	M-F	7/27-7/31	12:30pm-3:30pm	\$110/\$160

Backyard Sports

Camp will focus on fun and fundamental skills of kickball, wiffleball, foot golf, frisbee golf, and much more! This camp is designed to build a positive introduction to new and exciting sports.

#/Link	Age	Day	Date	Time	R/NR
138755	6-9	M-F	8/3-8/7	9am-3:30pm	\$230/\$340
138752	6-9	M-F	8/3-8/7	9am-12pm	\$110/\$160
138753	6-9	M-F	8/3-8/7	12:30pm-3:30pm	\$110/\$160
138754	10-14	M-F	8/3-8/7	9am-3:30pm	\$230/\$340
138750	10-14	M-F	8/3-8/7	9am-12pm	\$110/\$160
138751	10-14	M-F	8/3-8/7	12:30pm-3:30pm	\$110/\$160

Last Hurrah

Look at it like it's your last chance at freedom before it's back to the books! This camp, we're importing campers favorite activities, games and crafts all in one camp.

#/Link	Age	Day	Date	Time	R/NR
138777	6-9	M-F	8/10-8/14	9am-3:30pm	\$230/\$340
138776	6-9	M-F	8/10-8/14	9am-12pm	\$110/\$160
138775	6-9	M-F	8/10-8/14	12:30pm-3:30pm	\$110/\$160
138794	6-9	M, Tu	8/17-8/18	9am-3:30pm	\$100/\$140
138784	6-9	M, Tu	8/17-8/18	9am-12pm	\$45/\$65
138787	6-9	M, Tu	8/17-8/18	12:30pm-3:30pm	\$45/\$65
138783	10-14	M-F	8/10-8/14	9am-3:30pm	\$230/\$340
138773	10-14	M-F	8/10-8/14	9am-12pm	\$110/\$160
138774	10-14	M-F	8/10-8/14	12:30pm-3:30pm	\$110/\$160
138791	10-14	M, Tu	8/17-8/18	9am-3:30pm	\$100/\$140
138789	10-14	M, Tu	8/17-8/18	9am-12pm	\$45/\$65
138788	10-14	M, Tu	8/17-8/18	12:30pm-3:30pm	\$45/\$65





Positively Play

The summer months provide a lot of time for play! Have your child gear up for preschool while enjoying a fun-filled summer camp experience. Children will explore crafts, songs and stories in a fun social environment that fosters creativity. The activities will vary from session-to-session. Please register your children for the age they will be by the start of camp. Emergency forms must be completed online through ePACT. Must meet the age requirement by September 1, 2026. (ks)

Spring Avenue Recreation Center Age 2 ½

#/Link	Day	Date	Time	R/NR
138596	M,W	6/15-6/24	9am-11am	\$96/\$144
138597	Tu,Th	6/16-6/25	9am-11am	\$96/\$144
138598	M,W	7/6-7/15	9am-11am	\$96/\$144
138599	Tu,Th	7/7-7/16	9am-11am	\$66/\$99
138600	M,W	7/20-7/29	9am-11am	\$96/\$144
138601	Tu,Th	7/21-7/30	9am-11am	\$96/\$144

Main Street Recreation Center Age 3

#/Link	Day	Date	Time	R/NR
138602	M,W	6/15-6/24	9am-11:30am	\$115/\$173
138603	Tu,Th	6/16-6/25	9am-11:30am	\$115/\$173
138604	M,W	7/6-7/15	9am-11:30am	\$115/\$173
138605	Tu,Th	7/7-7/16	9am-11:30am	\$83/\$124
138606	M,W	7/20-7/29	9am-11:30am	\$115/\$173
138607	Tu,Th	7/21-7/30	9am-11:30am	\$115/\$173

Main Street Recreation Center Age 4

#/Link	Day	Date	Time	R/NR
138608	M-Th	6/15-6/25	9am-11:30am	\$230/\$345
138611	M-Th	6/15-6/25	12:15pm-2:45pm	\$230/\$345
138609	M-Th	7/6-7/16	9am-11:30am	\$230/\$345
138612	M-Th	7/6-7/16	12:15pm-2:45pm	\$230/\$345
138610	M-Th	7/20-7/30	9am-11:30am	\$230/\$345
138613	M-Th	7/20-7/30	12:15pm-2:45pm	\$230/\$345

Kindergarten Camp

Ages 5-6

Keep your child's academic skills sharp over the summer while having fun! Campers will practice journals to upper and lower-case letters, spelling, and sight words; and incorporate addition skills. Children will do crafts, have free time, and play outside. Designed for children entering kindergarten in the fall. Must meet the age requirement by September 1, 2026. Location: Main Street Recreation Center. (ks)

Morning

#/Link	Day	Date	Time	R/NR
138614	M-Th	6/15-6/25	9am-11:30am	\$230/\$345
138615	M-Th	7/6-7/16	9am-11:30am	\$230/\$345
138616	M-Th	7/20-7/30	9am-11:30am	\$230/\$345

Afternoon

#/Link	Day	Date	Time	R/NR
138617	M-Th	6/15-6/25	12:15pm-2:45pm	\$230/\$345
138618	M-Th	7/6-7/16	12:15pm-2:45pm	\$230/\$345
138619	M-Th	7/20-7/30	12:15pm-2:45pm	\$230/\$345



Imagination Station

Ages 4-7

Campers will enjoy games, arts and crafts, and making new friends while exploring Maryknoll Park, the program's new location. With its splash pad, natural areas, open fields, indoor space, playground, picnic areas, and exploratory play features, Maryknoll Park provides the perfect setting for early camp experiences. Imagination Station offers exciting daily activities with a different theme each week, giving campers a great introduction before moving on to full-day camp. Drop-off and pick-up will take place at the picnic areas near the playground. Emergency forms must be completed online through ePACT. Campers must meet the age requirement by September 1, 2026. Location: Maryknoll Park. (ks)

Morning

#/Link	Day	Date	Time	R/NR
138572	Tu-F	6/9-6/12	9am-11:30am	\$125/\$188
138574	M-F	6/15-6/19	9am-11:30am	\$155/\$230
138576	M-F	6/22-6/26	9am-11:30am	\$155/\$230
138578	M-W	6/29-7/1	9am-11:30am	\$93/\$140
138580	M-F	7/6-7/10	9am-11:30am	\$155/\$230
138582	M-F	7/13-7/17	9am-11:30am	\$155/\$230
138584	M-F	7/20-7/24	9am-11:30am	\$155/\$230
138586	M-F	7/27-7/31	9am-11:30am	\$155/\$230
138588	M-F	8/3-8/7	9am-11:30am	\$155/\$230

Afternoon

#/Link	Day	Date	Time	R/NR
138573	Tu-F	6/9-6/12	12:30pm-3pm	\$125/\$188
138575	M-F	6/15-6/19	12:30pm-3pm	\$155/\$230
138577	M-F	6/22-6/26	12:30pm-3pm	\$155/\$230
138579	M-W	6/29-7/1	12:30pm-3pm	\$93/\$140
138581	M-F	7/6-7/10	12:30pm-3pm	\$155/\$230
138583	M-F	7/13-7/17	12:30pm-3pm	\$155/\$230
138585	M-F	7/20-7/24	12:30pm-3pm	\$155/\$230
138587	M-F	7/27-7/31	12:30pm-3pm	\$155/\$230
138589	M-F	8/3-8/7	12:30pm-3pm	\$155/\$230

Safety Village

Ages 3 ½-5

The Safety Village program is designed to build a foundation of safety knowledge in young children, including personal, pedestrian, home and play safety, in a fun environment. We will help develop confidence and sound decision-making abilities regarding safe practices. Children learn how to handle specific safety situations such as being approached by a stranger and how community workers help people. This program is play-based. Classroom visitors, games, crafts, music, stories, films, and role playing are a part of the Safety Village curriculum. Children will practice safe riding and street safety in our outdoor learning area. Please bring a water bottle and bike helmet to class each day. Must meet the age requirement by September 1, 2026. Location: Spring Avenue Recreation Center. (ks)

Morning

#/Link	Day	Date	Time	R/NR
138590	M-Th	6/15-6/25	9:30am-11:30am	\$184/\$276
138591	M-Th	7/6-7/16	9:30am-11:30am	\$184/\$276
138592	M-Th	7/20-7/30	9:30am-11:30am	\$184/\$276

Afternoon

#/Link	Day	Date	Time	R/NR
138593	M-Th	6/15-6/25	12:30pm-2:30pm	\$184/\$276
138594	M-Th	7/6-7/16	12:30pm-2:30pm	\$184/\$276
138595	M-Th	7/20-7/30	12:30pm-2:30pm	\$184/\$276



Discovery Duos Camp

Ages 1-5

This nature camp is for little ones and a caregiver. Meet for three days to explore the outdoors together. Enjoy hands-on activities that introduce nature through observations, stories, and discoveries. Location: Churchill Park. (lb)

#/Link	Day	Date	Time	R/NR
138637	M-W	6/29-7/1	9am-10:30am	\$40/\$48

Fours 4 Nature Camp

Age 4

This preschool nature camp is just for four-year-olds. We will keep the group size small for more personal interactions. We will explore the park's trails, ecosystems, plants, and animals. Stories, activities, crafts, and games support the various topics. Location: Churchill Park. (lb)

#/Link	Day	Date	Time	R/NR
138635	M-Th	6/29-7/2	9am-11am	\$72/\$86
138636	M-F	8/3-8/7	9am-11am	\$90/\$108

Garden Camp

Ages 5-10

This camp will meet at the new outdoor classroom and community garden along Lenox Road. Experience the joy of planting seeds and harvesting vegetables while learning about where food comes from. With a week at the beginning and one at the end of the summer, campers can observe different parts of the garden season. Camp will include opportunities to taste garden produce or foraged fruit. Each week includes unique garden themed art, stories, games, and activities that will supplement daily garden chores and walks in the woods. Location: Ackerman Park. (lb)

#/Link	Day	Date	Time	R/NR
138629	M-F	6/15-6/19	9am-11:30am	\$130/\$156
138630	M-F	8/3-8/7	9am-11:30am	\$130/\$156

Mud Buddies Camp

Ages 5-10

This camp highlights the creatures that live in water, mud, and soil. Campers will get their hands dirty and their feet wet as we spend two days exploring the creek and ponds. We will turn over logs, visit remote parts of the park, and provide plenty of play time. Stories, crafts, and games will support each day's outdoor education topics. Location: Churchill Park. (lb)

#/Link	Day	Date	Time	R/NR
138640	M-F	7/13-7/17	9am-11:30am	\$130/\$156
138641	M-F	7/13-7/17	12:30pm-3pm	\$130/\$156
138642	M-F	7/20-7/24	9am-11:30am	\$130/\$156
138643	M-F	7/20-7/24	12:30pm-3pm	\$130/\$156

Nature Camp

Ages 5-7

This hands-on program will take campers through fields, woods, and wetlands in search of plants, insects, reptiles, birds, and mammals. We will introduce basic ecological concepts while exploring the park's habitats. Stories, activities, crafts, and games support the various topics. Each week includes a pond and creek day when campers will have the opportunity to wade and dip nets in the water. Location: Churchill Park. (lb)

#/Link	Day	Date	Time	R/NR
138626	M-F	6/15-6/19	9am-11:30am	\$130/\$156
138627	M-F	6/15-6/19	12:30pm-3pm	\$130/\$156
138628	M-F	6/22-6/26	9am-11:30am	\$130/\$156



Wildlife Camp

Ages 7-9

Is your child a budding zoologist? Each day we will focus on a different group of animals: mammals, birds, invertebrates, reptiles/amphibians, and a habitat helpers' day. Unique behaviors, adaptations, and interdependence among species will be emphasized as we search for and celebrate wildlife. Each week includes a pond and creek day. Campers will have the opportunity to wade and search for creatures that make a home in the water. Location: Churchill Park. (lb)

#/Link	Day	Date	Time	R/NR
138631	M-F	6/22-6/26	9am-11:30am	\$130/\$156
138632	M-F	6/22-6/26	12:30pm-3pm	\$130/\$156
138633	M-F	7/6-7/10	9am-11:30am	\$130/\$156
138634	M-F	7/6-7/10	12:30pm-3pm	\$130/\$156

Survivor Camp

Ages 11-13

Acquire the skills and know-how to thrive outside. Begin to truly understand nature while improving self-reliance, resourcefulness, and confidence. Learn how to be good stewards of the land as you discover the interconnectedness of the natural world. Whether it's navigation, cattail weaving, knot tying, shelter building, edible plant identification, fire starting, or the always-popular fishing day at Lake Ellyn, campers will be going wild with all they learn. Location: Churchill Park. (lb)

#/Link	Day	Date	Time	R/NR
138644	M-F	7/20-7/24	9am-11:30am	\$140/\$168
138645	M-F	7/27-7/31	9am-11:30am	\$140/\$168

Eco-Builders Camp

Ages 9-11

This nature maker camp will turn the outdoors into an open-air workshop. Campers will assemble and complete a variety of hands-on projects. Some will stay at the park, helping birds and other wildlife. Others will be brought home to enjoy. We will include work to improve native habitats. In addition, campers will have time to explore, hiking the trails and becoming familiar with the resident plants and animals. Eco-Builders have a pond and creek day when they are able to wade and explore the aquatic ecosystem. Location: Churchill Park. (lb)

#/Link	Day	Date	Time	R/NR
138638	M-F	7/6-7/10	9am-11:30am	\$140/\$168
138639	M-F	7/13-7/17	9am-11:30am	\$140/\$168



Sticky Fingers Cooking: Farm to Table Cooking Camp

Ages 4-6

How does our food go from ingredient to recipe to table? Explore the bounty of summer-fresh, local, colorful ingredients. Young chefs will learn about fruits and vegetables that come from the soil, vines, trees, pods, and bushes. Then, we'll whip up some delicious recipes and cultivate lifelong culinary skills. Location: Spring Avenue Recreation Center. (aa)

#/Link	Age	Day	Date	Time	R/NR
138962	4-6	M-F	6/15-6/19	9:30am-11:30am	\$315/\$375
138963	7-12	M-F	6/15-6/19	1pm-4pm	\$470/\$560

Sticky Fingers Cooking: Kids Cooking Showdown

Ages 7-12

Young chefs will take on cooking challenges inspired by favorite cooking TV shows such as Sugar Rush, Great British Bake Off, Nailed It! and Cutthroat Kitchen. Young chefs will get their creative juices flowing in this fun and delicious cooking adventure. Location: Spring Avenue Recreation Center. (aa)

#/Link	Day	Date	Time	R/NR
138964	M-F	6/22-6/26	1pm-4pm	\$470/\$560
138965	M-F	8/10-8/14	1pm-4pm	\$470/\$560

Sticky Fingers Cooking: Basic Training Baking Boot Camp

Ages 7-12

Aspiring bakers who love to get their hands sticky in the kitchen will love this camp. Learn the basics of scratch baking from pita bread to lemon tarts to cornbread. Young chefs will love creating sweet and savory baked goods in this tasty and imaginative camp. Location: Spring Avenue Recreation Center. (aa)

#/Link	Day	Date	Time	R/NR
138966	M-F	7/6-7/10	1pm-4pm	\$470/\$560

Sticky Fingers Cooking: Cooks & Books Camp

Your child will do the chopping, grating, prepping, and cooking-oh MY! And you will end up with an inspired & excited new young chef in your family and a freshly prepared meal on the table. Family meals will also become more fun and exciting; When kids get to learn about the ingredients in their recipes and have a hand in creating their food, they're much more willing to try new foods. There is a world of flavor to enjoy right now and right in your own kitchens. Location: Spring Avenue Recreation Center. (aa)

#/Link	Age	Day	Date	Time	R/NR
138967	4-6	M-F	7/20-7/24	9:30am-11:30am	\$315/\$375
138968	7-12	M-F	7/20-7/24	1pm-4pm	\$470/\$560



Sticky Fingers Cooking: S.T.E.A.M Cooking Camp

Ages 7-12

What's especially great about cooking is that it authentically integrates all these skills in one activity. Whether you're measuring ingredients, operating an Instant Pot, stacking sushi roll ingredients, plating a meal, or scaling a recipe, you're switching among all the S.T.E.A.M. skills. And it's not just the skills you're practicing, but also the different ways of thinking. The kitchen, after all, is a place for problem-solving, innovation, creative/critical thinking, and collaboration.

Location: Spring Avenue Recreation Center. (aa)

#/Link	Day	Date	Time	R/NR
138969	M-F	7/27-7/31	1pm-4pm	\$470/\$560

Sticky Fingers Cooking: Global Taste Buds Camp

Ages 4-17

Cook your way around the world in our globally-inspired cooking camp. What better way to explore another culture than through its food? In this delicious camp, young chefs will cook recipes from countries all around the world and explore food history, explore customs, songs, geography, and languages associated with each recipe. Young chefs will cook and gobble up tasty, healthy cuisine from South America, Europe, Africa, and Asia. Location: Spring Avenue Recreation Center. (aa)

#/Link	Age	Day	Date	Time	R/NR
138970	4-6	M-F	8/3-8/7	9:30am-11:30am	\$470/\$560
138971	7-12	M-F	8/3-8/7	1pm-4pm	\$470/\$560

Creative Clay-Makers

Ages 9-12

Bring a lunch and your creativity for four days full of clay-making fun. Participants will learn a variety of hand building methods including pinch, coil, slab, slump, and mosaic to create several fantastic projects. Some projects will be completed during the week while others will be ready for pick up within two weeks after they have been kiln-fired.

Location: Ackerman SFC. (dr)

#/Link	Day	Date	Time	R/NR
138691	M-Th	6/15-6/18	10am-1pm	\$285/\$315
138692	M-Th	7/13-7/16	10am-1pm	\$285/\$315
138693	M-Th	8/3-8/6	10am-1pm	\$285/\$315

Sew Simple: Sewing Basics Camp

Ages 8-13

Participants will learn to sew using store bought fabric. The purpose is to help all participants become familiar with using a sewing machine. Instruction will focus on helping students learn how to understand a pattern and sew on a sewing machine to create some fun projects. A variety of usable projects will be made as students increase their sewing skills. Bring one yard of cotton fabric, all other supplies will be provided. Bring your own sewing machine or use one of ours. Location: Spring Avenue Recreation Center. (aa)

#/Link	Day	Date	Time	R/NR
138959	Tu-F	6/9-6/12	9:30am-11:30am	\$295/\$355
138960	Tu-F	6/9-6/12	1pm-3pm	\$295/\$355

Sew Simple: Quilt Sewing Camp

Ages 8-13

Discover the art of quilting and take your sewing skills to the next level in this creative and fun summer sewing camp. Learn to piece fabrics together and craft beautiful, quilted items such as ornaments, decorations, oven mitts, potholders, doll quilts, or cozy lap quilts. Whether you're a beginner or an experienced sewist, this class offers something for everyone. Bring your own full-size sewing machine and supplies or use ours. Please bring one yard of woven cotton fabric — everything else you need will be provided. Join us and stitch your way to stunning creation! Location: Spring Recreation Center. (aa)

#/Link	Day	Date	Time	R/NR
138961	M-Th	6/15-6/18	9:30am-11:30am	\$295/\$355

The Art Camp

Ages 5-10

Join us for a week of original art that includes painting and drawing instruction where the children will create a watercolor masterpiece daily while also creating jewelry, hand building small paper objects and building three dimensional form with model magic. Drawing instruction is foundational to an understanding of three dimensional form in space and assists with mathematical reasoning. Art builds confidence, social connection, community and emotional regulation. Location: Ackerman SFC. (dr)

We Love Dogs and Cats

#/Link	Day	Date	Time	R/NR
138694	M-F	6/22-6/26	10am-12:30pm	\$330/\$370

We Love Friends and Food

#/Link	Day	Date	Time	R/NR
138695	M-F	6/29-7/3	10am-12:30pm	\$330/\$370

We Love Animals and the Earth

#/Link	Day	Date	Time	R/NR
138696	M-F	7/6-7/10	10am-12:30pm	\$330/\$370

We Love our Families and our Homes

#/Link	Day	Date	Time	R/NR
138697	M-F	7/27-7/31	10am-12:30pm	\$330/\$370

“Yes, And” Improv Camp

Ages 7-18

This high-energy summer camp immerses young performers in the spontaneous, laughter-filled world of improvisational theatre. Campers build quick-thinking skills through engaging games, character work, and collaborative storytelling. Each day strengthens creativity, confidence, and teamwork as they practice the essential “yes, and” mindset. The week ends with a lively showcase where participants share their imaginative scenes with family and friends. Campers staying the full day for another theatre camp will be supervised from 12-1pm for a free lunch hour. Location: Spring Avenue Recreation Center. (aa)

#/Link	Day	Date	Time	R/NR
138954	Tu-F	6/9-6/12	9am-12pm	\$175/\$225

3,2,1, Action! Musical Camp

Ages 8-18

Over three weeks, campers will learn the ins and outs of putting on a musical, from singing and acting to choreography and stagecraft. With guidance from experienced instructors, campers will grow their skills and confidence while working together to create a show-stopping performance. The camp culminates in a live performance, where friends and family can cheer on their budding stars! This summer’s production will be “You’re a Good Man Charlie Brown.” Campers will need a water bottle. Campers staying the full day from another theatre camp will be supervised from 12-1pm for a free lunch hour. Location: Spring Avenue Recreation Center. (aa)

#/Link	Day	Date	Time	R/NR
138953	M-F	6/9-6/26	1pm-4pm	\$350/\$420

Storytelling: Seuss Style Camp

Ages 7-17

This whimsical camp invites young creators to craft bold, imaginative stories inspired by playful rhythms and fantastical worlds. Campers explore character building, rhyme, and vibrant language through hands-on activities and group adventures. Each day encourages creativity, confidence, and a love of storytelling as they dream up their own Seuss-style tales. The week concludes with a colorful sharing session where participants present their uniquely zany creations. Campers staying the full day for another theatre camp will be supervised from 12-1pm for a free lunch hour. Location: Spring Avenue Recreation Center. (aa)

#/Link	Day	Date	Time	R/NR
138955	M-F	6/15-6/19	9am-12pm	\$175/\$225





Art of Acting Camp

Ages 7-17

Embark on a daily adventure where our specialized program immerses aspiring performers in diverse skills with a unique focus each day. Campers delve into improvisation, analyze comedic and dramatic characters, and master the art of delivering compelling monologues. The week concludes with a dazzling showcase, allowing participants to present their polished monologues to friends and family, showcasing their journey into the world of acting. Campers staying the full day for another theatre camp will be supervised from 12-1pm for a free lunch hour. Location: Spring Avenue Recreation Center. (aa)

#/Link	Day	Date	Time	R/NR
138956	M-F	6/22-6/26	9am-12pm	\$175/\$225

Mini Musical Mashup Camp

Ages 6-10

This lively camp lets young performers dive into the world of musical theatre by learning and polishing songs from a variety of beloved shows. Campers develop vocal technique, stage presence, and ensemble skills through fun, focused rehearsals. Each day encourages creativity, confidence, and collaboration as they explore different musical styles. The week wraps up with an energetic performance where participants share their mashup of musical numbers with family and friends. Campers staying the full day for another theatre camp will be supervised from 12-1pm for a free lunch hour. Location: Spring Avenue Recreation Center. (aa)

#/Link	Day	Date	Time	R/NR
138957	M-F	7/6-7/10	9am-12pm	\$175/\$225

Broadway Bound Cabaret Camp

Ages 10-18

This focused camp gives performers the chance to create a personalized cabaret-style showcase inspired by their favorite Broadway songs. Campers dive into character interpretation, storytelling through music, and performance technique with guidance tailored to their individual strengths. Each day encourages artistic expression and confidence as they refine solo and small-group numbers. The week concludes with an intimate cabaret performance where participants share their polished pieces with family and friends. Campers staying the full day from another theatre camp will be supervised from 12-1pm for a free lunch hour. Location: Spring Avenue Recreation Center. (aa)

#/Link	Day	Date	Time	R/NR
138958	M-F	7/6-7/10	1pm-4pm	\$175/\$225

Princess Camp

Ages 4-6

Become your favorite princess and experience the royal life. Camp includes stories, art, games, and activities perfect for aspiring royalty. Participants are encouraged to dress as their favorite princess, or princess of the day. Expect visits from Snow White, Cinderella, Anna, Rapunzel, and Belle throughout the week. Location: Ackerman SFC. (dr)

#/Link	Day	Date	Time	R/NR
138698	M-F	6/22-6/26	2pm-3pm	\$75/\$110
138699	M-F	6/29-7/3	2pm-3pm	\$75/\$110
138700	M-F	7/6-7/10	2pm-3pm	\$75/\$110
138701	M-F	7/20-7/24	10am-11am	\$75/\$110



Dance Academy: Twirl and Tiara Camp

Ages 5-10

Dance like a princess at Twirl & Tiara Camp! This enchanting camp combines ballet, creativity, and fun, perfect for little dancers who love to twirl and sparkle. Campers will master graceful ballet moves, create beautiful crafts, and dress up in their finest tiaras for a magical experience. With music, movement, and fairy tale charm, every dancer will leave feeling like royalty. Camp ends with a showcase for friends and family to enjoy. Location: Spring Avenue Recreation Center. (aa)

#/Link	Day	Date	Time	R/NR
138972	M-Th	7/27-7/30	9:30am-11:30am	\$130/\$150

Dance Academy: Mix & Move Camp

Ages 6-10

This energetic camp invites performers to explore a variety of dance styles, from ballet and hip-hop to jazz and beyond. Campers build technique, rhythm, and coordination through fun, engaging movement activities. Each day encourages creativity, confidence, and self-expression as participants experiment with different styles and combinations. The week culminates in a lively showcase where dancers share their favorite routines with family and friends. Location: Spring Avenue Recreation Center. (aa)

#/Link	Day	Date	Time	R/NR
138974	M-Th	7/27-7/30	12pm-2pm	\$130/\$150

Dance Academy: Hip Hop Camp

Ages 6-10

Get ready to pop, lock, and groove! This high-energy hip-hop camp gives young dancers an exciting chance to learn and explore the world of hip-hop dance during their break. Through dynamic classes and fun activities, participants will master cool moves, build confidence, and make new friends in a supportive and upbeat environment. Perfect for all skill levels, this camp is the ultimate way to stay active, express creativity, and bring the energy to the dance floor. Camp ends with a showcase for friends and family to enjoy. Location: Spring Avenue Recreation Center. (aa)

#/Link	Day	Date	Time	R/NR
138973	M-Th	8/3-8/6	9:30am-11:30am	\$130/\$150

Dance Academy: Ballet Studio Camp

Ages 6-10

This focused camp immerses performers in the graceful world of ballet, emphasizing technique, posture, and artistic expression. Campers develop strength, flexibility, and musicality through structured exercises and engaging choreography. Each day encourages discipline, confidence, and a deeper appreciation for the art of ballet. The week concludes with a polished performance where participants showcase their skills for family and friends. Location: Spring Avenue Recreation Center. (aa)

#/Link	Day	Date	Time	R/NR
138975	M-Th	8/3-8/6	12pm-2pm	\$130/\$150

T-Rexplorers: Adventures in Paleontology - Beginner Camp

Ages 5-8

This is the perfect camp for the younger dinosaur lovers of the world. Each day, kids will get to play games, make crafts, and examine different authentic prehistoric fossils and dinosaur bones from numerous species including Triceratops and T-Rex. Kids love this adventure and won't even realize they are learning, too. Bring a water bottle and a healthy snack. We will be outdoors so dress accordingly. Location: Lake Ellyn Park. (ks)

#/Link	Day	Date	Time	R/NR
138664	M-F	7/13-7/17	9am-12pm	\$335/\$503

T-Rexplorers: Adventures in Paleontology - Ultimate Camp

Ages 8-12

This is as close as you can get to a dinosaur dig without leaving the state! Kids will love this fun and adventurous "straight from the cretaceous period" camp because of its unique exploration of dinosaur science and paleontology. Prepare to get dirty as we use the tools and skills utilized at a dig site. Each day, we'll examine different types of authentic prehistoric fossils and dinosaur bones, including Triceratops and T-Rex. Come and see the discoveries T-Rexplorers made at our recent digs, and enjoy games, crafts, and activities. Bring a water bottle and a healthy snack. We will be outdoors so dress accordingly. Location: Lake Ellyn Park. (ks)

#/Link	Day	Date	Time	R/NR
138665	M-F	7/13-7/17	1pm-4pm	\$335/\$503

Bricks Game On Master Builders Engineering Camp

Ages 5-10

For kids today, it's all about the world of online video games and apps! In this interactive summer camp, campers will use LEGO® Bricks to create and build different characters from their favorite video games. Themes such as Super Mario Bros, Roblox, Beyblades, Fortnite & Pokémon come to life using robots, mosaics, and 3D art, all made out of LEGO® Bricks. Don't forget classic Nintendo and SEGA themes such as Zelda, Duck Hunt, Pacman, and Sonic the Hedgehog. Each day will be a new adventure as the virtual and LEGO® worlds combine. Our creative camps feature LEGO® mosaics, 3D LEGO® color kit Builds, motorized technic LEGO® projects, daily take home arts & crafts, creative free play and more. Location: Main Street Recreation Center. (ks)

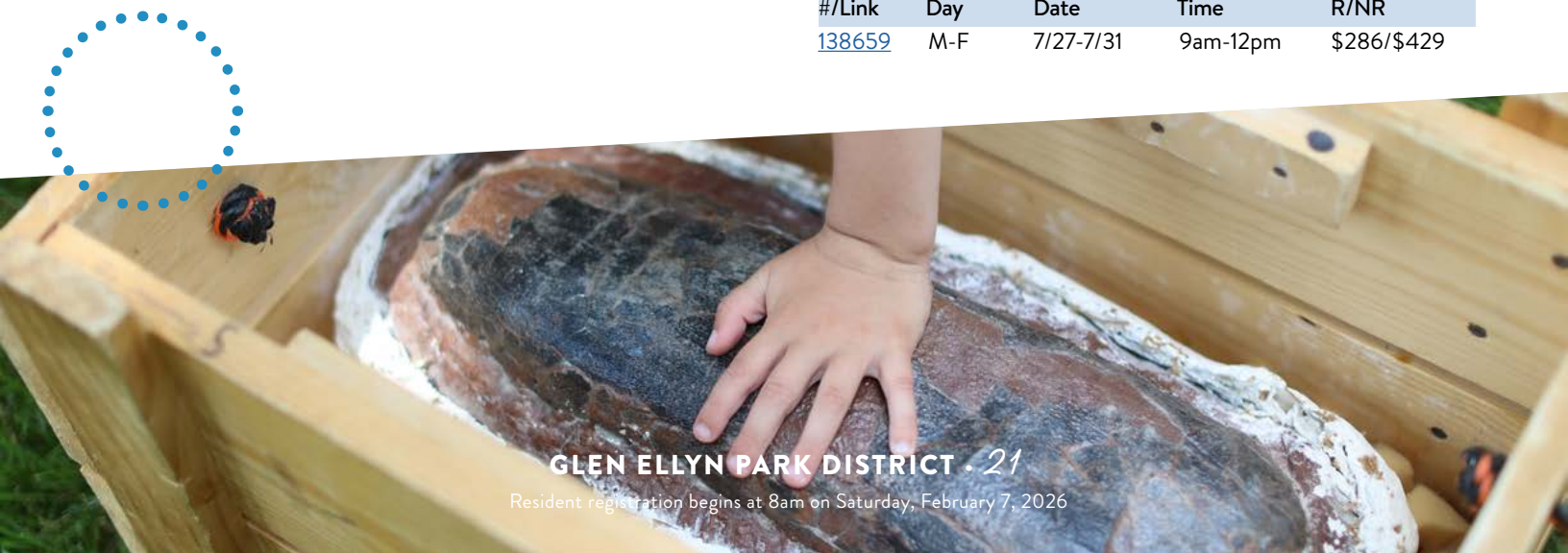
#/Link	Day	Date	Time	R/NR
138655	M-F	7/20-7/24	1pm-4pm	\$236/\$354

Bricks4Kidz: Stop Motion Animation Movie Making Camp

Ages 5-10

Lights, cameras, action! Use LEGO® bricks to tell your story complete with music, special effects and all your favorite LEGO® mini- figure characters and friends. In this unique and creative class, students will plan, script, stage, shoot, and produce their own mini-movie using Stop Motion Animation. Students will be given creative freedom to make a movie about what interests them. Working in small teams, students will use LEGO® components to build the set and props then shoot their movie using computer software, cameras & microphones. Teams will use movie-making software to add special effects, titles, credits and more. Don't miss your chance to be a movie producer. Location: Main Street Recreation Center. (ks)

#/Link	Day	Date	Time	R/NR
138659	M-F	7/27-7/31	9am-12pm	\$286/\$429



Computer Explorers Robot Engineers Camp

Ages 7-12

This camp builds knowledge of simple machines, engineering, programming, and teamwork using the LEGO® WeDo Robotics System, as students use an intuitive, icon-based programming environment, helping to bring their model to life. Location: Main Street Recreation Center. (ks)

#/Link	Day	Date	Time	R/NR
138837	M-Th	6/15-6/18	9am-10:30am	\$120/\$180

Computer Explorers Beginning FUN-gineering

Ages 4-6

Young engineers will build working models of simple machines such as a seesaw, a rolling vehicle, and hockey player using Lego® Educational kits. Children will have a great time working on activities designed around creativity, exploring, investigating and problem solving in a fun group environment! While building these fun and interactive models, they will learn about levers, pulleys, gears, wheels, and axles. Location: Main Street Recreation Center. (ks)

#/Link	Day	Date	Time	R/NR
138838	M-Th	6/15-6/18	11am-12pm	\$80/\$120

Computer Explorers: Jurassic Cinema

Ages 8-12

Bring your Tyrannosaurus Rex, Triceratops, or a Velociraptor to life as we create our very own dinosaur movie! Using their imaginations and creativity, students will work together in teams to write their own stories about their favorite dinosaurs, design their own backgrounds, and film and edit their own movies by using digital cameras and animation software. All students will get a copy of their movie for home screenings, after class is complete. Location: Main Street Recreation Center. (ks)

#/Link	Day	Date	Time	R/NR
138841	M-Th	6/15-6/18	12:30pm-2pm	\$120/\$180

Computer Explorers Animation Workshop Camp

Ages 8-12

Let's explore the world of animation. In this camp students will learn about different 2D techniques, such as stop-motion animation, creating a cartoon strip or software that will bring life to images. As animators, directors and producers, the only limitation is your imagination. Location: Main Street Recreation Center. (ks)

#/Link	Day	Date	Time	R/NR
138843	M-Th	7/20-7/23	9am-10:30am	\$120/\$180

Computer Explorers Minecraft - Basic Training for Beginners

Ages 6-8

Are your friends all into Minecraft, but you have not quite figured it out? This camp is for you. You and your partner will collaborate to learn essential crafting skills while searching for clues to unlock doors, complete scavenger hunts and more. You will get an introduction to the basics of computer networking, multidimensional objects, and video game graphics. After completing this boot camp, participants will have the basic tools to participate in more advanced Minecraft adventures. Location: Main Street Recreation Center. (ks)

#/Link	Day	Date	Time	R/NR
138844	M-Th	7/20-7/23	11am-12:15pm	\$100/\$150

Computer Explorers: Minecraft Madness

Ages 8-12

Explore the world of Minecraft, one of the most popular video games in history, offers an amazing world of endless possibilities. Let your imagination transform your Minecraft experience into a unique world that you create. Students will discover how to expand their worlds' possibilities using popular game-enhancing mods. Build traps, arrow launchers, faster rail systems, and participate in building challenges. Learn fundamentals of computer networking through this unique Minecraft experience that also allows you and your friends to work in multiplayer mode as you mine, craft, and build together to survive. Location: Main Street Recreation Center. (ks)

#/Link	Day	Date	Time	R/NR
138845	M-Th	7/20-7/23	12:45pm-2:15pm	\$120/\$180

LEGO® STEM - JEDI Engineering: Mission to Space Camp

Ages 5-10

Join us on an adventurous journey through space! Build a world where rebels and the dark side start epic battles. Using our proprietary LEGO® project kits and model plans, the students will use their engineering skills to build different moving models each day. We'll build motorized models that represent spacecraft from Star Wars and models related to the NASA space program. Our one-of-a-kind models incorporate beams, gears, axles, motors & battery packs. Are you a budding astronaut? An adventurer who loves space exploration? Then you'll love our space theme projects. We'll provide the bricks; all you need to bring for this adventure is your imagination. Our creative camps feature LEGO® mosaics, 3D LEGO® color kit Builds, motorized technic LEGO® projects, daily take home arts & crafts, creative free play and more. Location: Main Street Recreation Center. (ks)

#/Link	Day	Date	Time	R/NR
138652	M-F	6/15-6/19	9am-12pm	\$236/\$354
138653	M-F	7/27-7/31	1pm-4pm	\$236/\$354

LEGO® Superhero Science Camp

Ages 5-10

Can't fly? Don't have laser eyes? No problem...some of the coolest superheroes make amazing gadgets and use scientific principles to stop the bad guys and solve crimes. We'll be doing just that and more using LEGO® Bricks and some ingenuity. Campers will use our proprietary kits and model plans to build one-of-a-kind superhero creations, gadgets, vehicles & more. Whether you are a master crime-fighting builder (or even if you can fly!), you'll have a blast learning, building, and playing with other superheroes-in-the-making at Bricks 4 Kidz. At Bricks 4 Kidz camps, we use LEGO bricks to build amazing worlds of fun in a variety of exciting themes that engage children in STEM-enriched activities and making new LEGO®-loving friends. Our creative camps feature LEGO® mosaics, 3D LEGO® color kit Builds, motorized technic LEGO® projects, daily take home arts & crafts, creative free play and more. Location: Main Street Recreation Center. (ks)

#/Link	Day	Date	Time	R/NR
138654	M-F	6/15-6/19	1pm-4pm	\$236/\$354



EV3 Mindstorms LEGO® Robotics Coding Camp

Ages 5-13

Coding is often described as a key literacy of the 21st century. Our coding and robotics camp teaches students strategies for building confidence, logic, resourcefulness, and problem-solving skills that support long-term success. Using LEGO® Mindstorms EV3 robotics, students will work with motors, sensors, and software to code commands directly into the intelligent brick. They will test their creations by moving objects with robotic claws, designing a mouse trap, constructing an electric guitar or tank bot, and more. Campers will also build and code battle bots to compete against one another. Location: Main Street Recreation Center. (ks)

#/Link	Day	Date	Time	R/NR
138657	M-F	7/6-7/10	9am-12pm	\$286/\$429

LEGO® Minecraft Adventure Camp

Ages 5-10

Experience the exciting world of Minecraft® using LEGO® bricks this summer! This fun & exciting camp takes a whole lot of LEGO® Bricks, a background in STEM, children's natural creativity, and inspiration from the popular game to build on a week of learning fun...the Bricks 4 Kidz way. From Pigs, Mooshrooms and Chickens to Mine Carts, Zombies and Skeletons, we'll explore and build different stories each day in our LEGO® Mining and Crafting world. Kids will start by crafting their shelters, mob characters, critters and tools using LEGO® bricks. Students will face new challenges each day, building models and crafting key elements from the popular Minecraft® game. Using our proprietary kits and model plans, campers will construct one-of-a-kind Minecraft® models using LEGO® bricks. Our specialized model plans incorporate beams, gears, axles, motors, battery packs and other technic LEGO® components. Location: Main Street Recreation Center. (ks)

#/Link	Day	Date	Time	R/NR
138650	M-F	7/6-7/10	1pm-4pm	\$236/\$354
138651	M-F	8/10-8/14	9am-12pm	\$236/\$354

LEGO® City Engineering & Architects Camp

Ages 5-10

Explore the structures and landscapes of a city: Campers will work in teams to design and build the city of their dreams, using LEGO® bricks! The architects may plan a road, propose a monument, design a park or school, or imagine a skyscraper. Using our proprietary kits and model plans, campers will construct one-of-a-kind LEGO® City models using LEGO® bricks. Builders will assemble motorized models of construction tools and equipment, vehicles, carnival & playground rides. Campers will also have a city museum & zoo day where they build animals & dinosaurs. Our specialized model plans incorporate beams, gears, axles, motors, battery packs and other technic LEGO® components. Learn what it takes to become a LEGO® City planner. Location: Main Street Recreation Center. (ks)

#/Link	Day	Date	Time	R/NR
138649	M-F	7/20-7/24	9am-12pm	\$236/\$354
138658	M-F	8/10-8/14	1pm-4pm	\$286/\$429

iCode: Roblox Editor - Create & Code Your World

Ages 7-12

Campers will learn to use The Roblox Editor, a special coding environment used to create complete projects in Roblox! This exciting camp takes an activity your child already loves, and turns it into an educational adventure. Location: Main Street Recreation Center. (ks)

#/Link	Day	Date	Time	R/NR
138662	M-F	6/22-6/26	9am-11:30am	\$250/\$375



iCode: Minecraft - Modding Adventure

Ages 7-12

Campers will learn how to make Mods (modifications) for one of their favorite games: Minecraft. Learning to mod in Minecraft is a gateway to an adventure of creativity in computer skills that can be taken from video games to the real world. Location: Main Street Recreation Center. (ks)

#/Link	Day	Date	Time	R/NR
138661	M-F	6/22-6/26	12pm-2:30pm	\$250/\$375

iCode: 3D Innovators

Ages 8-13

Over the course of three exciting days, campers will dive into the world of 3D printing as designers, engineers, and inventors! This hands-on camp introduces kids to the basics of 3D modeling, the design thinking process, and how 3D printers bring ideas to life layer by layer. Campers will start with simple projects and build up to designing their own custom creation. They'll explore topics like problem-solving, creative design, and real-world uses for 3D printing in fields like architecture, medicine, and engineering. Location: Main Street Recreation Center. (ks)

#/Link	Day	Date	Time	R/NR
138660	M-F	7/27-7/31	9am-11:30am	\$250/\$375

iCode: Vex - Battle Of The Bots - Tournament

Ages 8-14

Battle of the bots is a great way to learn how technologies like programming, sensors, gears, and mechanics work, all while having fun. Campers will learn the fundamentals of mechanical engineering as they team up to build robotic systems and compete against one another in tasks such as sumo-wrestling, tug-o-war, head-to-head combat, and much more. By the end of the program, campers will put their skills to the test and see who can build the best battle bot. Location: Main Street Recreation Center. (ks)

#/Link	Day	Date	Time	R/NR
138663	M-F	7/27-7/31	12pm-2:30pm	\$250/\$375

RoboThink: Battle Tanks Camp

Ages 7-12

Get ready for a tank-tastic experience at our battle-themed camp. Join us as students dive into the exciting world of tanks, building a variety of different armored machines. Throughout the program. They will tackle numerous challenges and engage in epic robot battles that will test their engineering skills to the max. This program is designed for seasoned RoboThinkers, but newbies are always welcome, just prepare for an exhilarating challenge that will leave you hungry for more. Location: Main Street Recreation Center. (ks)

#/Link	Day	Date	Time	R/NR
138625	M-F	7/6-7/10	1pm-4pm	\$265/\$398

STEAM Camp

Ages 9-12

This new science and art camp will allow students to sample the methods that are used to monitor and manage Park District natural areas, such as pollinator inventories and water quality testing. Time will be included each day for nature-themed art projects, allowing campers to practice fine motor skills and develop their creativity. Location: Churchill Park. (lb)

#/Link	Day	Date	Time	R/NR
138646	M-F	7/27-7/31	9am-11:30am	\$140/\$168





Horse Camp for Kids!

Ages 9-13

Join in the fun at Dunham Woods Farm with our Summer Horse Camp! Campers will learn the proper ways to groom, tack and handle horses as well as learning the basics of riding at the walk and trot. Campers will learn tons of cool information about breeds, colors, markings of horses and more. We will also have fun with games and other activities. Come and meet some new friends while getting to hang out with horses. Riders should wear jeans or Jodhpur pants and hard soled riding or hiking boots with a small, low heel. No sandals or gym shoes. Campers must bring an approved riding helmet or bicycle helmet to ride, and a sack lunch. Juice boxes or bottled water will be provided. Location: Dunham Woods Farm. (aa)

2-Day Camp

#/Link	Day	Date	Time	R/NR
138944	Tu-W	6/9-6/10	11:20am-2pm	\$225/\$275
138945	Tu-W	6/16-6/17	11:20am-2pm	\$225/\$275
138946	Tu-W	7/7-7/8	11:20am-2pm	\$225/\$275
138947	Tu-W	7/14-7/15	11:20am-2pm	\$225/\$275
138948	Tu-W	7/28-7/29	11:20am-2pm	\$225/\$275
138949	Tu-W	8/4-8/5	11:20am-2pm	\$225/\$275

4-Day Camp

#/Link	Day	Date	Time	R/NR
138950	Tu-W	6/9-6/17	11:20am-2pm	\$350/\$400
138951	Tu-W	7/7-7/15	11:20am-2pm	\$350/\$400
138952	Tu-W	7/28-8/5	11:20am-2pm	\$350/\$400

Counselor in Training

Ages 13-15

Are you ready to take the first step toward becoming an amazing camp counselor? Our 2-week Camp Counselor in Training Program is the perfect opportunity for teens to gain leadership skills, build confidence, and learn what it takes to work with younger campers...all while having a blast! During the first week, participants will dive into engaging in-classroom sessions designed to teach essential skills for camp counseling. In week two, participants will put their skills into practice by spending time at various camps throughout the Park District. Under the guidance of experienced counselors, they will assist with leading activities, managing groups, and ensuring campers have a positive and safe experience. Participants will visit Sunset Pool Monday through Thursday. To celebrate their hard work, participants will enjoy a special camp adventure every Friday. By the end of the program, participants will earn a certificate of completion, setting them on the path to becoming outstanding camp counselors and leaders in their community. Must meet the age requirement by September 1, 2026. Location: Spring Avenue Recreation Center. (ks)

#/Link	Day	Date	Time	R/NR
138620	M-F	6/15-6/26	9am-2pm	\$600
138621	M-F	7/6-7/17	9am-2pm	\$600
138622	M-F	7/20-7/31	9am-2pm	\$600

Ackerman Fit Camp

Ages 10-15

The Ackerman SFC team of experienced fitness professionals is excited to bring a complete fitness program to the youth of our community. Each day will start with a total body stretch and dynamic warm-up to get the body ready for the day's workouts. From there we will go into Performance Training focusing on speed, agility, strength, mobility, and injury prevention. Next up is Cycle to help build endurance and heart health. The day will finish with Yoga to help release any tension of the body and mind. Stress relief relaxation will take place at the end of class. Location: Ackerman SFC. (ab)

#/Link	Day	Date	Time	R/NR
138786	M-F	6/8-6/12	9am-11am	\$100/\$150
138790	M-F	7/13-7/17	9am-11am	\$100/\$150

Ackerman Power Hour

Ages 10-15

Unleash your potential with Ackerman's Power Hour! This high-energy, one-hour workout packs a punch, blending strength, endurance, and flexibility into one exciting session. Start with 20 minutes of bodyweight strength training to build muscle and boost power, followed by 20 minutes of fast-paced cycling to supercharge your stamina. Finish with 20 minutes of mobility exercises to improve flexibility, recovery, and prevent injury. Led by Ackerman SFC trainers, this camp will elevate your athletic performance and leave you feeling stronger, more energized, and ready to crush your goals. Location: Ackerman SFC. (ab)

#/Link	Day	Date	Time	R/NR
138782	M-F	6/15-6/19	4pm-5pm	\$75/\$110
138785	M-F	7/13-7/17	4pm-5pm	\$75/\$110

Ackerman Speed Camp

Ages 8-12

Elevate your young athlete's performance during the off-season with our week-long Sports Performance Camp! Focused on developing key athletic skills like speed, agility, and quickness, this camp is designed to give athletes the competitive edge they need to excel in any sport. Led by trainers at Ackerman SFC, athletes will work in small groups to improve their foundational skills through dynamic, sport-specific exercises. Whether they're gearing up for the next season or looking to enhance their overall athletic ability, this camp is the perfect way to build strength, speed, and confidence. Location: Ackerman SFC. (ab)

#/Link	Day	Date	Time	R/NR
138778	M-F	6/15-6/19	10am-11am	\$65/\$95
138779	M-F	7/6-7/10	10am-11am	\$65/\$95
138780	M-F	7/20-7/24	10am-11am	\$65/\$95
138781	M-F	8/3-8/7	10am-11am	\$65/\$95



Spartan Basketball Camp

Grades 4th-8th (as of Fall 2026)

Campers are taught basic basketball fundamentals, including individual skills for shooting, passing, dribbling, footwork, rebounding, and defense. With an emphasis placed on teamwork, campers practice those skills in daily contests and scrimmages. Location: Glen Crest Middle School. (cb)

Boys

#/Link	Grade	Day	Date	Time	R/NR
138985	5th-6th	M-F	6/1-6/19	10:15am-11:45am	\$110
138986	7th-8th	M-F	6/1-6/19	8:30am-10am	\$110

Girls

#/Link	Grade	Day	Date	Time	R/NR
138983	4th-6th	M-F	6/1-6/19	2:30pm-4pm	\$110
138984	7th-8th	M-F	6/1-6/19	12:45pm-2:15pm	\$110

Coach Faulkner Girls Basketball Camp

Grades 2nd-5th

This camp is led by Kristi Faulkner, who is the Girl's Varsity Head Coach at Glenbard West. Participants will work on various skills and drills to enhance their basketball skills. Games will be played each day of camp incorporating the skills that were worked on that day. Camp will utilize all three courts and participants will be divided up based on age. All participants are required to bring their own basketball. *Camp not affiliated with Glenbard West High School or School District 87. Location: Ackerman SFC. (dt)

#/Link	Day	Date	Time	R/NR
138894	M-F	6/15-6/19	10:30am-12pm	\$155/\$205

Giunta-Mayer Basketball Skills Camp

Grades 1st-4th

Basketball Coach Christine Giunta-Mayer will teach participants the basic techniques of shooting, dribbling, passing, rebounding, and defense. This camp will not only provide a fundamental base for each player, but will also be an enjoyable experience. Location: Ackerman SFC. (dr)

#/Link	Grade	Day	Date	Time	R/NR
138813	1st/2nd	M-Th	6/15-6/18	12pm-1pm	\$100/\$150
138826	1st/2nd	M-Th	7/13-7/16	1pm-2pm	\$100/\$150
138827	1st/2nd	M-Th	7/27-7/30	12pm-1pm	\$100/\$150
138830	3rd/4th	M-Th	6/15-6/18	1pm-2pm	\$100/\$150
138829	3rd/4th	M-Th	7/13-7/16	2pm-3pm	\$100/\$150
138828	3rd/4th	M-Th	7/27-7/30	1pm-2pm	\$100/\$150

Biddy Basketball Camp

Ages 5-8

Biddy Basketball Camp offers a fun and active environment where young players build skills and confidence. Campers learn the fundamentals...dribbling, passing, shooting, and teamwork...through engaging drills and exciting games. Each session combines skill development with friendly competition, helping kids grow as players while having a great time on the court. Location: Ackerman SFC. (dt)

#/Link	Day	Date	Time	R/NR
138993	M-Th	6/29-7/2	9am-10am	\$100/\$150



Three Level Basketball Camp w/Coach Opoka

Grades 3rd-8th

Three Level Basketball offers a fun and active environment where young players build skills and confidence. Campers learn the fundamentals...dribbling, passing, shooting, and teamwork...through engaging drills and exciting games. Each session combines skill development with friendly competition, helping kids grow as players while having a great time on the court. *Camp not affiliated with Glenbard West High School or School District 87. Location: Ackerman SFC. (dt)

#/Link	Grade	Day	Date	Time	R/NR
139002	3rd-5th	M-Th	6/29-7/2	10am-11:30am	\$100/\$150
139003	6th-8th	M-Th	6/29-7/2	11:30am-1pm	\$100/\$150

Jordan Kent's Just Kids Skill Camps

Ages 6-11

Join the Just Kids Skills Camp and take part in one of the freshest and most exciting camp experiences around! Offering beginning to intermediate fundamental training in football, soccer, basketball, and additional sports throughout the week. Our "total athlete approach" also provides agility training, fun games, character enrichment, and nutrition education. Campers will learn to challenge themselves and develop their athletic potential in a positive and exciting setting that is unmatched anywhere. Location: Ackerman SFC.

Register at <https://jordankentcamps.com/>

Day	Date	Time	R/NR
M-Th	7/6-7/9	8am-12pm	See above

Big 3 Sports All Stars Skills & Scrimmage Camp

Grades 1st-6th

The Big 3 Sports All-Stars Skills & Scrimmage Camp blends high-energy skill development with competitive gameplay to help athletes elevate their overall game. Players sharpen fundamentals through structured drills before applying them in live scrimmages and small-sided games. Your player will improve their confidence on the court in a fun & competitive environment. Location: Ackerman SFC. (dt)

#/Link	Grade	Day	Date	Time	R/NR
139006	1st-3rd	M-Th	7/13-7/16	9am-11am	\$100/\$150
139009	4th-6th	M-Th	7/13-7/16	11am-1pm	\$100/\$150
139010	1st-3rd	M-Th	7/27-7/30	9am-11am	\$100/\$150
139011	4th-6th	M-Th	7/27-7/30	11am-1pm	\$100/\$150



Bulls Kid Nation Youth Hoops Summer Camp by BMO

Ages 5-13

Sign your kids up to join the Bulls for this 5-day program designed to improve participants basketball skills while providing an unforgettable experience. This program is intended for players of all skill levels. Participants will be split into groups by age and ability, allowing for fine-tuned curriculum and individualized challenges. Participants will practice fundamentals and improve their game through on-court play, while also taking part in leadership and teamwork development. Participants will receive Youth Hoops Swag Bag and opportunities to participate in the Bulls Skills Challenge for a chance to win exclusive prizes. Location: Ackerman SFC. (dr)

Register at www.nba.com/bulls/kidnation

Day	Date	Time	R/NR
M-F	7/20-7/24	9am-12pm	See above
M-F	7/20-7/24	1pm-4pm	See above

Volleyball Skills Camp

Grades 1st-8th

Glenbard West State Champion Coach Christine Giunta-Mayer will focus on fundamental training and individual skills for passing, setting, blocking, and serving. Young athletes will improve their volleyball skills and develop proper playing habits. Location: Ackerman SFC. (dr)

Boys

#/Link	Grade	Day	Date	Time	R/NR
138832	1st/2nd	Tu-F	6/9-6/12	12pm-1pm	\$100/\$150
138833	1st/2nd	M-Th	8/3-8/6	9am-10am	\$100/\$150
138858	1st-3rd	M-Th	7/27-7/30	2pm-3pm	\$100/\$150
138854	1st-4th	M-Th	7/6-7/9	12pm-1pm	\$100/\$150
138852	3rd/4th	M-Th	6/15-6/18	2pm-3pm	\$100/\$150
138836	3rd-5th	Tu-F	6/9-6/12	1pm-2pm	\$100/\$150
138839	3rd-5th	M-Th	8/3-8/6	10am-11am	\$100/\$150
138856	5th-8th	M-Th	7/6-7/9	1pm-2pm	\$100/\$150
138846	6th-8th	Tu-F	6/9-6/12	2pm-3pm	\$100/\$150
138847	6th-8th	M-Th	6/15-6/18	3pm-4pm	\$100/\$150
138848	6th-8th	M-Th	8/3-8/6	11am-12pm	\$100/\$150
138860	7th/8th	M-Th	7/27-7/30	3pm-4pm	\$100/\$150

Girls

#/Link	Grade	Day	Date	Time	R/NR
138835	1st/2nd	Tu-F	6/9-6/12	12pm-1pm	\$100/\$150
138834	1st/2nd	M-Th	8/3-8/6	9am-10am	\$100/\$150
138859	1st-3rd	M-Th	7/27-7/30	2pm-3pm	\$100/\$150
138855	1st-4th	M-Th	7/6-7/9	12pm-1pm	\$100/\$150
138853	3rd/4th	M-Th	6/15-6/18	2pm-3pm	\$100/\$150
138842	3rd-5th	Tu-F	6/9-6/12	1pm-2pm	\$100/\$150
138840	3rd-5th	M-Th	8/3-8/6	10am-11am	\$100/\$150
138857	5th-8th	M-Th	7/6-7/9	1pm-2pm	\$100/\$150
138851	6th-8th	Tu-F	6/9-6/12	2pm-3pm	\$100/\$150
138850	6th-8th	M-Th	6/15-6/18	3pm-4pm	\$100/\$150
138849	6th-8th	M-Th	8/3-8/6	11am-12pm	\$100/\$150
138861	7th/8th	M-Th	7/27-7/30	3pm-4pm	\$100/\$150





Spartan Volleyball Camp

Grades 5th-8th (as of Fall 2026)

Campers focus on the fundamentals of team offense including passing, setting and spiking, along with team defense and blocking. Location: Glen Crest Middle School. (cb)

Boys

#/Link	Grade	Day	Date	Time	R/NR
138990	5th	M-F	6/22-7/3	12pm-1pm	\$80
138991	6th	M-F	6/22-7/3	10am-11:30am	\$80
138992	7th/8th	M-F	6/22-7/3	8:30am-10am	\$80

Girls

#/Link	Grade	Day	Date	Time	R/NR
138987	5th	M-F	6/22-7/3	12pm-1pm	\$80
138988	6th/7th	M-F	6/22-7/3	10am-11:30am	\$80
138989	8th	M-F	6/22-7/3	8:30am-10am	\$80

Sand Volleyball Camp

Ages 9-12

Develop volleyball skills, strategy, and technique. Participants will receive a solid foundation on the fundamental skills of sand volleyball through fun and active drills, as well as daily scrimmages. Location: Ackerman SFC. (dr)

#/Link	Day	Date	Time	R/NR
138688	M-F	6/22-6/26	9am-10am	\$65/\$95
138689	M-F	7/13-7/17	9am-10am	\$65/\$95
138690	M-F	8/3-8/7	9am-10am	\$65/\$95

Cyclones Volleyball Camp

Grades 3rd-8th

The area's top club team...the Cyclones, will teach students the fundamentals of passing, setting, and hitting. The lesson plan directs the use of self-mastery training that helps each student reach a new level in preparation for the upcoming season. Equipment provided. Location: College of Dupage. (dt)

#/Link	Grade	Day	Date	Time	R/NR
138895	3rd-5th	M-W	6/15-6/17	12:30pm-3pm	\$115/\$175
138896	6th-8th	M-Th	7/13-7/16	12:30pm-3pm	\$150/\$220

5 Stars Soccer Camp

Ages 5-13

The 5 Star Soccer Camps are proud to offer a fresh, enthusiastic approach to teaching youth soccer. We pride ourselves in delivering a curriculum that presents the most current and advanced information on the development of the youth soccer player. The quality of our staff is among the best around, working hard to build on fundamental technique, while creating an atmosphere that unlocks the game within each child. We believe in our program, designed for success, that presents a positive, enjoyable environment for learning from energetic coaches in youth soccer. Program of instruction designed by Michael Wiggins, 2 time Illinois High School Soccer Coach of the Year and Head Coach of the 2014 Illinois HS State Champions. Location: Ackerman Park.

#/Link	Day	Date	Time	R/NR
139018	M-F	6/15-6/19	9am-12pm	\$160/\$185

Future Pros Pee Wee Soccer Camp

Ages 4-6

Introduce your little one to the game of soccer in a fun, supportive, and engaging environment. This camp blends playful activities with foundational soccer skills, helping young players learn through age-appropriate games and drills. Each participant receives their own soccer ball.

Location: Ackerman Park.

#/Link	Day	Date	Time	R/NR
139015	M-F	6/22-6/26	9am-10am	\$115/\$165
139016	M-F	7/13-7/17	9am-10am	\$115/\$165
139017	M-F	7/27-7/31	9am-10am	\$115/\$165

Future Pros Open Soccer Camp

Ages 7-14

Future Pros Open Soccer Camp is the ideal way to introduce players to the game and strengthen their skills in a fun, development-focused environment. Guided by professional Future Pros trainers, campers will take part in small-group activities built around daily themes such as dribbling, passing, attacking, and defending. Each session promotes confidence, smart decision-making, and teamwork to help players grow both on and off the field. Location: Ackerman Park.

#/Link	Day	Date	Time	R/NR
139012	M-F	6/22-6/26	9am-11am	\$160
139013	M-F	7/13-7/17	9am-11am	\$160
139014	M-F	7/27-7/31	9am-11am	\$160

CAS Mini Magic Soccer

Ages 3-4

Children will develop their motor skills, physical literacy and an introduction to the soccer ball through fun and themed games related to their current world.

Location: Ackerman Park.

#/Link	Day	Date	Time	R/NR
139020	M-F	6/29-7/3	9am-10am	\$125/\$150

CAS Little Kickers

Ages 4-6

Camp will focus on Physical literacy, developing a child's motor skills incorporating soccer movement with and without the ball. Fun, themed games will be used to guarantee an exciting experience for our youngest players.

Location: Ackerman Park.

#/Link	Day	Date	Time	R/NR
139021	M-F	6/29-7/3	10:30am-12pm	\$170/\$195

CAS Soccer Super Stars

Ages 7-14

Technical development will be a key feature of the curriculum. Introduction to small-sided games, progression from technique to skills will be a key component to the program. Introduction to defending and attacking as an individual and a team. Learning the game with the best age-appropriate activities to bring the best out of our emerging players. Location: Ackerman Park.

#/Link	Day	Date	Time	R/NR
139019	M-F	6/29-7/3	9am-12pm	\$240/\$265

Chicago Fire Little Sparks Soccer Camp (Adult/Child)

Ages 2-5

Little Sparks is the Chicago Fire's introduction to soccer program where adults and children can take their first steps in soccer together. Adults play too! Specifically designed for children aged two to five years old and using the fun of play and imaginative stories, Little Sparks facilitates a child's physical, mental, and social-emotional development through the game of soccer. Little Sparks uses three key principles (experiential play, creative learning, holistic activity) to build an environment for children to learn and explore different outcomes associated with soccer and self-development.

Location: Ackerman Park.

#/Link	Day	Date	Time	R/NR
139024	M-F	7/6-7/10	8am-9am	\$120/\$170
139025	M-F	8/10-8/14	8am-9am	\$120/\$170



Chicago Fire Soccer Camp

Ages 6-12

Chicago Fire FC Camps are the perfect way to introduce your child to the world's fastest-growing youth sport and develop their soccer skills. Through small group instruction, certified, professional coaches will guide campers through activities structured around daily themes, including dribbling, passing, attacking, and defending. Chicago Fire FC Camps incorporate nationally recognized SEL (Social and Emotional Learning) traits and values like self-awareness, responsible decision-making, and teamwork into activities. All participants receive a Chicago Fire camp t-shirt, and a ticket to a Chicago Fire match. Along with the ticket comes a special match-day experience including player autographs, an appearance by the lovable Fire mascot, Sparky, and discounted tickets for the whole family. Location: Ackerman Park.

Full Day

#/Link	Day	Date	Time	R/NR
139026	M-F	7/6-7/10	9am-4pm	\$335/\$405
139027	M-F	8/10-8/14	9am-4pm	\$335/\$405

Morning Half Day

#/Link	Day	Date	Time	R/NR
139028	M-F	7/6-7/10	9am-12pm	\$210/\$270
139029	M-F	8/10-8/14	9am-12pm	\$210/\$270

Afternoon Half Day

#/Link	Day	Date	Time	R/NR
139030	M-F	7/6-7/10	1pm-4pm	\$210/\$270
139031	M-F	8/10-8/14	1pm-4pm	\$210/\$270

Challenger Tykes TetraBrazil Soccer Camp

Ages 3-5

The TetraBrazil Camp blends traditional Brazilian technical training with the flair, passion, and creativity that define South American soccer. Developed by a team of professional soccer educators in Brazil, the TetraBrazil curriculum brings the same high-level training used by professional Brazilian clubs to teams, coaches, and players across North America. Campers will experience the vibrant culture of Brazilian soccer...warming up to samba music, learning Portuguese phrases, and gaining insight into life in a country where soccer is more than a sport...it's a way of life. Camp will include a free soccer ball, jersey, and certificate. Location: Ackerman Park.

#/Link	Day	Date	Time	R/NR
139022	M-F	8/3-8/7	8am-8:45am	\$145/\$200

Challenger TetraBrazil Soccer Camp

Ages 6-14

The TetraBrazil Camp blends traditional Brazilian technical training with the flair, passion, and creativity that define South American soccer. Developed by a team of professional soccer educators in Brazil, the TetraBrazil curriculum brings the same high-level training used by professional Brazilian clubs to teams, coaches, and players across North America. Campers will experience the vibrant culture of Brazilian soccer...warming up to samba music, learning Portuguese phrases, and gaining insight into life in a country where soccer is more than a sport...it's a way of life. Camp will include a free soccer ball, jersey, and certificate. Location: Ackerman Park.

#/Link	Day	Date	Time	R/NR
139023	M-F	8/3-8/7	9am-12pm	\$220/\$300



Coming Soon!
**Glenbard West
and South Camps**



Check gepark.org/playbook for information on Glenbard West and Glenbard South summer camps. For questions, please contact Clint Babicz at cbabicz@gepark.org.

Information will be posted on February 24, 2026.
Registration begins at 10 am on March 4, 2026.

Ackerman Adult-Tot Sports

Ages 3-5

Introduce your tot to the basic skills of organized sports like soccer, t-ball, and football through engaging exercises and skill drills. We will focus on basic motor skills like kicking, throwing, catching, balancing, and hand-eye coordination. Sports equipment and instructions are provided to help guide your child through an introduction to organized sports. Adult participation is required. Location: Ackerman SFC. (dr)

#/Link	Day	Date	Time	R/NR
138682	M-F	6/22-6/26	10am-10:45am	\$55/\$65
138683	M-F	7/13-7/17	10am-10:45am	\$55/\$65
138684	M-F	8/3-8/7	10am-10:45am	\$55/\$65

Chicago Union Ultimate Frisbee Camp

Ages 9-13

Kids learn Ultimate Frisbee with the Chicago Union, Chicago's professional team. The camp teaches throwing, catching, movement, and teamwork through engaging activities similar to soccer and football drills. Designed for all skill levels. Participants will also receive Chicago Union merchandise. Location: Ackerman Park (dt).

#/Link	Day	Date	Time	R/NR
138892	M-F	6/8-6/12	9am-11:30am	\$130/\$195
138893	M-F	7/27-7/31	1pm-3:30pm	\$130/\$195

Nerf on the Turf Camp

Ages 8-12

Bring your best Nerf skills to our Indoor Ackerman Turf and get in on thrill of blaster-filled competition. Participants will engage in tactical training, themed missions, obstacle course challenges, and help lead their team to victory during arena battles. Location: Ackerman SFC. (dr)

#/Link	Day	Date	Time	R/NR
138685	M-F	6/22-6/26	4pm-5pm	\$55/\$85
138686	M-F	7/6-7/10	4pm-5pm	\$55/\$85
138687	M-F	7/27-7/31	4pm-5pm	\$55/\$85

Gymnastics Camp

Ages 3-12

Who's ready to learn new skills? The focus will be on basic skills and shaping needed on each event (bars, beam, floor, and vault). We will also play games and have a snack break. Please send your child to camp with a nut-free snack each day. Stretching and conditioning for muscle tone will be included. Proper attire is mandatory for all gymnastics participants. Please avoid hood shirts or sweatshirts. Options for girls include gymnastics leotards, shorts, and t-shirts. Boys are welcome to wear shorts or sweatpants with a t-shirt. All participants should perform activities with bare feet. Hair must be pulled back and away from face prior to the start of class. If you have any questions, contact Nicki Tazelaar at ntazelaar@gepark.org. Location: Ackerman SFC. (bt)

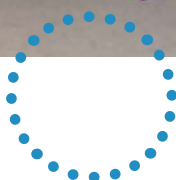
#/Link	Age	Day	Date	Time	R/NR
138978	6-12	M	6/29	9am-12pm	\$50/\$75
138979	6-12	M	6/29	2pm-5pm	\$50/\$75
138980	6-12	Tu	6/30	2pm-5pm	\$50/\$75
138981	6-12	Tu	6/30	9am-12pm	\$50/\$75
138982	3-5	W	7/1	10am-12pm	\$35/\$53

RISE Field Hockey: Pre-Season Training Camp

Ages 11-18

Join RISE Field Hockey coaches for a final skills and training session before the high school season begins. All incoming 6th-12th graders are invited. Participants must bring their own stick, shin guards, and mouth guard. Location: Newton Park. (dt)

#/Link	Day	Date	Time	R/NR
138897	M-Th	7/20-7/23	10am-11:30am	\$145



Starlight Studios: Mindful Archery Camp

Ages 9-14

We are aiming high on the range and in life. Led by a NASP-certified coach, students will master the eleven essential steps of successful archery while prioritizing range safety. Throughout the program, we integrate mindfulness, breath, and playful movement to foster calm and introduce students to useful tools for managing nerves, fears, and anxiety. Students explore growth-mindset and goal-setting strategies that can be applied to their archery practices and their daily lives. Our mission is to help each student tap into their inner strength, leaving them with a renewed sense of self and the confidence to shine brightly in the world. Location: Main Street Recreation Center. (ks)

#/Link	Day	Date	Time	R/NR
138623	M-F	7/27-7/31	9am-12pm	\$300/\$450
138624	M-F	7/27-7/31	1pm-4pm	\$300/\$450

Youth Pickleball Camp

Ages 9-15

Learn the basics of pickleball in this week-long camp. Students will have a blast participating in various drills and exercises to enhance the learning experience. All skill levels are welcome. Participants are encouraged to provide their own paddle. (bt)

Village Green Park

#/Link	Ages	Day	Date	Time	R/NR
138793	9-11	M-Th	6/15-6/19	10am-11am	\$65/\$102
138795	12-15	M-Th	6/15-6/19	11am-12pm	\$65/\$102
138803	9-11	M-Th	6/22-6/25	10am-11am	\$65/\$102
138808	12-15	M-Th	6/22-6/25	11am-12pm	\$65/\$102

Ackerman Park

#/Link	Ages	Day	Date	Time	R/NR
138796	9-11	M-Th	7/6-7/9	10am-11am	\$65/\$102
138800	12-15	M-Th	7/6-7/9	11am-12pm	\$65/\$102
138805	9-11	M-Th	7/13-7/16	10am-11am	\$65/\$102
138810	12-15	M-Th	7/13-7/16	11am-12pm	\$65/\$102
138797	9-11	M-Th	7/20-7/23	10am-11am	\$65/\$102
138801	12-15	M-Th	7/20-7/23	11am-12pm	\$65/\$102

Tennis and Swim Camp

Ages 6-12

Join us at Sunset Park where instructors will teach the basic skills and drills for tennis while incorporating those into interactive games. Participants will then head to Sunset Pool to cool off. Participants are encouraged to provide their own tennis racquet. Swimsuit and towel are required for all participants. Location: Sunset Park & Sunset Pool. (bt)

#/Link	Day	Date	Time	R/NR
138812	Tu-Th	6/9-6/11	1pm-4pm	\$165/\$230
138816	M-W	6/15-6/17	1pm-4pm	\$165/\$230
138817	M-W	6/22-6/24	1pm-4pm	\$165/\$230
138818	M-W	6/29-7/1	1pm-4pm	\$165/\$230
138819	M-W	7/6-7/8	1pm-4pm	\$165/\$230
138820	M-W	7/13-7/15	1pm-4pm	\$165/\$230
138821	M-W	7/20-7/22	1pm-4pm	\$165/\$230
138822	M-W	7/27-7/29	1pm-4pm	\$165/\$230

Summer Tennis Mini Camp

Ages 6-10

Enjoy learning or improving your skills in this end of summer tennis mini-camp. Bring your friends for a fun, social atmosphere of drills and games. All ability levels are welcome. Location: Glenbard West Courts. (bt)

#/Link	Day	Date	Time	R/NR
138823	M-W	8/3-8/5	9am-11am	\$110/\$150



Ackerman Flag Football Jr.

Ages 6-8

Learn the fundamentals of flag football in an encouraging environment. This camp prioritizes skill drills, teamwork, and relay races that will boost your child's confidence and love for the game. Every class session will end in a scrimmage where players can put their new skills to practice. All levels of experience and skill are welcome. Location: Ackerman SFC. (dr)

Boys

#/Link	Day	Date	Time	R/NR
138666	M-F	6/15-6/19	12pm-1pm	\$65/\$95
138671	M-F	6/29-7/3	12pm-1pm	\$65/\$95
138672	M-F	7/20-7/24	12pm-1pm	\$65/\$95
138673	M-F	8/3-8/7	12pm-1pm	\$65/\$95

Girls

#/Link	Day	Date	Time	R/NR
138674	M-F	6/22-6/26	12pm-1pm	\$65/\$95
138675	M-F	7/6-7/10	12pm-1pm	\$65/\$95
138676	M-F	7/27-7/31	12pm-1pm	\$65/\$95
138677	M-F	8/10-8/14	12pm-1pm	\$65/\$95

Ackerman Flag Football

Ages 9-12

Participants will be introduced to the game of flag football, focusing on fundamental skills, teamwork, and sportsmanship. Our instructors will guide participants through a variety of drills, games, contests, and scrimmages to develop their football skill set on offensive and defensive sides of the game. Location: Ackerman SFC. (dr)

Boys

#/Link	Day	Date	Time	R/NR
138678	M-F	6/15-6/19	12pm-1pm	\$65/\$95
138679	M-F	6/29-7/3	12pm-1pm	\$65/\$95
138680	M-F	7/20-7/24	12pm-1pm	\$65/\$95
138681	M-F	8/3-8/7	12pm-1pm	\$65/\$95

Girls

#/Link	Day	Date	Time	R/NR
138667	M-F	6/22-6/26	12pm-1pm	\$65/\$95
138668	M-F	7/6-7/10	12pm-1pm	\$65/\$95
138669	M-F	7/27-7/31	12pm-1pm	\$65/\$95
138670	M-F	8/10-8/14	12pm-1pm	\$65/\$95





East Ave Lacrosse Camp

Grades PreK-8th

Learn why lacrosse is the fastest growing sport in America at a fun, fast-paced summer camp run by East Ave Lacrosse, one of the premier lacrosse clubs in the Midwest. Campers will learn basic skills and play in small sided scrimmages from East Ave. This camp is great for first time and returning players and only requires a stick to participate and we will have extra sticks on hand for campers that need to use them! Please contact jerry@eastavelacrosse.com with any questions or if you need to borrow a stick for camp. Not affiliated with Glenbard West High School. Location: Newton Park. (cb)

Boys

#/Link	Grade	Day	Date	Time	R/NR
138998	PreK-2nd	M-Th	6/8-6/11	1:30pm-2:30pm	\$150
138999	3rd-8th	M-Th	6/8-6/11	1:30pm-3pm	\$185
139000	PreK-2nd	M-Th	7/20-7/23	1:30pm-2:30pm	\$150
139001	3rd-8th	M-Th	7/20-7/23	1:30pm-3pm	\$185

Girls

#/Link	Grade	Day	Date	Time	R/NR
138994	PreK-2nd	M-Th	6/8-6/11	1:30pm-2:30pm	\$150
138995	3rd-8th	M-Th	6/8-6/11	1:30pm-3pm	\$185
138996	PreK-2nd	M-Th	7/20-7/23	1:30pm-2:30pm	\$150
138997	3rd-8th	M-Th	7/20-7/23	1:30pm-3pm	\$185

True Lacrosse Boys Lacrosse Camp

Grades 1st-8th (as of Fall 2026)

Join True Lacrosse coaches for this 4-day camp. Players will work on individualized stickwork, positional play, and situational gameplay in a fun, fast-paced environment. Full pads/equipment are required. Not affiliated with Glenbard West High School. Location: Newton Park. (cb)

#/Link	Grade	Day	Date	Time	R/NR
139004	1st-4th	M-Th	6/15-6/18	8am-10am	\$200
139005	5th-8th	M-Th	6/15-6/18	10am-12pm	\$200

Bulldog Boys Summer Lacrosse: Speed Lax

Grades 2nd-8th (as of Fall 2026)

Have some fun and keep your skills sharp this summer. This program will be run in a pick-up game format. Coaches will divide the players into teams each week and act as coaching officials in the games. Lacrosse stick required; gloves are optional but recommended. Location: Newton Park. (cb)

#/Link	Grade	Day	Date	Time	R/NR
139007	2nd-4th	W	6/17-7/22	5:30pm-6:30pm	\$50
139008	5th-8th	W	6/17-7/22	6:30pm-7:30pm	\$50

Chicago White Sox: Baseball Camp

Ages 5-12

Learn from the pro's this summer at a White Sox Summer Camp presented by Wintrust with participating partner, Topps! Professional coaches from the White Sox organization have helped build programs designed for kids ages 5-12 at every ability level. All campers will work on throwing, hitting, fielding, and base-running, but more importantly, they will be taught how to love the game of baseball. Instructors will supervise campers based off of age and ability, and cater each experience to meet your child's needs. On top of the four (4) days of camp, each camper will receive tickets to a White Sox game (date TBD), a White Sox t-shirt, hat, and other various White Sox goodies. *Premium items (Sox tickets, t-shirt, hat, and goodies) subject to change. White Sox tickets date TBD. Location: Village Green Park. (cb)

Register at www.mlb.com/whitesox/fans/the-kids-can-play

Day	Date	Time	R/NR
M-Th	6/22-6/25	1pm-4pm	\$165
M-Th	8/3-8/6	8:30am-11:30am	\$165

Glen Ellyn Park District

scholarship program

Parks and Activities for Everyone

The scholarship program is available to all Glen Ellyn Park District residents that qualify. Scholarship funds can be used for non-contractual camps and classes, pool passes, trips, preschool, fitness, athletics, etc., where fees are required. Funds are not eligible for equipment purchases or rental fees. Residents who qualify are eligible to receive up to \$400 maximum per person per calendar year (January 1-December 31) based on need and availability of funds.

Applicants must be able to provide proof of residency and income as defined on the application. Copies of the application are available at gepark.org/financial-aid or by visiting the Spring Avenue (185 Spring Avenue) or Main Street (501 Hill Avenue) Recreation Centers. A completed application form along with copies of supporting documents must be returned in person or mailed to: Scholarship Program, Glen Ellyn Park District, 185 Spring Avenue, Glen Ellyn, IL 60137. Please allow up to 3 weeks for the application process. Applicants will be notified by letter or phone of the decision made concerning the scholarship. If you have questions, email scholarships@gepark.org.

Support the Scholarship Program

Your gift ensures all community members—kids, adults, seniors—can have access to Park District programs regardless of their family's financial situation. Give the gift of opportunity by donating today at geparksfoundation.org.

Su donación asegura que todos los miembros de la comunidad —niños, adultos, personas mayores— puedan tener acceso a los programas del Distrito de Parques, independientemente de la situación financiera de su familia. Done hoy en geparksfoundation.org y regale la oportunidad.

Parques y Actividades para Todos

El programa de becas está disponible para todos los residentes/habitantes del Distrito de Parques de Glen Ellyn que cumplan los requisitos necesarios. Los fondos de la beca pueden ser usados para programas con costo, como los campamentos y clases organizadas por el Distrito de Parques, pases para la alberca, paseos, escuela preescolar, el gimnasio, programas atléticos, y más. Los fondos de beca no son elegibles para la compra o renta de equipo. Los residentes/habitantes y estudiantes que cumplan los requisitos son elegibles a recibir hasta un máximo de \$400 dólares por persona por año calendario (1º de enero - 31 de diciembre). Todo esto basado en la necesidad y disponibilidad de los fondos de la beca.

Los aplicantes deberán proveer pruebas de ingresos y de que habitan/residen dentro de la cobertura del Distrito de Parques de Glen Ellyn como está definido en la aplicación. La aplicación se puede encontrar en gepark.org/financial-aid o puede pedir una copia en los centros de recreación de Spring Avenue (185 Spring Avenue) o Main Street (501 Hill Avenue). Se debe entregar la aplicación completada en su totalidad junto con las copias de los documentos pedidos en la aplicación, ya sea en persona o por correo al: Scholarship Program, Glen Ellyn Park District, 185 Spring Avenue, Glen Ellyn, IL 60137. El proceso de aplicación puede durar hasta tres semanas. Los aplicantes se notificarán por medio de una carta o una llamada telefónica con la decisión tomada sobre la beca. En caso de preguntas, favor de llamar al 630-858-2462.

The Fun Starts Here



Community-Based Recreational Programs and Inclusion Services For Park District Programs

WDSRA RECREATIONAL & SOCIAL PROGRAMS: IN-PERSON & VIRTUAL

WDSRA provides fun, engaging recreational and social programs, trips, and special events for children, teens, and adults with special needs. Programs are structured to allow everyone to participate at their own ability level. Through WDSRA each individual has the opportunity to grow personally, connect with their community and discover their potential.

- Sports
- Special Olympics
- Music and Dance
- Art and Drama
- Bowling
- Social Clubs
- Special Events
- Adaptive Sports
- Overnight Outings
- Weeklong Trips
- And much more!

INCLUSION SERVICES

Inclusion Services are designed to provide the least restrictive environment while providing the maximum opportunity to participate in regular park programs. There is no charge for WDSRA support. To register for services, simply indicate that special accommodations are needed on the park district registration form. Two-week advance notice is requested for inclusion support.



Western DuPage
Special Recreation Association



WE'RE HIRING

Join our team

BE A PART OF THE FUN!

Flexibility. Training. Choice.

We are looking for people who are optimistic and enthusiastic.

For details visit www.wdsra.com-Join Our Team.

Western DuPage Special Recreation Association
630-681-0962 • www.wdsra.com

GLEN ELLYN PARK DISTRICT • 39

¡La Diversión Comienza Aquí!



Programas Recreacionales Comunitarios y Servicios de Inclusión para Programas del Distrito de Parques

PROGRAMAS RECREACIONALES Y SOCIALES DE WDSRA EN PERSONA Y VIRTUALES:

WDSRA provee diversión, proveyendo programas recreacionales y sociales, viajes, y eventos especiales para niños, adolescentes, y adultos con necesidades especiales. Los programas están estructurados para permitir que todos participen en su propio nivel de habilidad. A través de WDSRA cada individuo tiene la oportunidad de crecer personalmente, conectar con su comunidad y descubrir su potencial.

- Deportes
- Olimpiadas Especiales
- Música y Baile
- Arte y Drama
- Bolos
- Clubes Sociales
- Eventos Especiales
- Deportes Adaptables
- Salidas con Estadía Nocturna
- Viajes de Fin de Semana
- ¡Y mucho más!

SERVICIOS DE INCLUSIÓN

Los Servicios de Inclusión están diseñados para proveer el menor entorno restrictivo a la misma vez que provee la máxima oportunidad de participar en programas regulares del parque. No hay costo por el apoyo de servicios de inclusión de WDSRA. Para registrarse para estos servicios, simplemente indique que acomodaciones especiales son necesarias en la forma de registración del distrito de parques. Se necesita un aviso con dos semanas de anticipación requiriendo el apoyo de servicios de inclusión.



ESTAMOS EMPLEANDO
Únete a nuestro equipo.

Estamos buscando por personas optimistas y entusiastas.

Flexibilidad. Entrenamiento. Elección.

Estamos buscando por personas optimistas y entusiastas.

Visita www.wdsra.com para detalles – Únete a nuestro equipo.

Western DuPage Special Recreation Association
630-681-0962 • www.wdsra.com

GLEN ELLYN PARK DISTRICT • 40

district policies

definition of residency

Anyone living within the geographic boundaries of the Glen Ellyn Park District is considered a resident. It's important to note that our boundaries may not align with the Village of Glen Ellyn. Residents contribute financially to the operation of the park system through property taxes. To compensate for the property tax disparity, the District charges nonresidents a higher fee for activities. If you reside in Glen Ellyn but do not pay property taxes to any park district, you are eligible for the Nonresident Household Membership.

The fastest way to determine your resident status is by checking your property tax bill, which will specify the park district you pay taxes to. If you need assistance, please call (630) 942-7280 or email registration@gepark.org.

waivers of liability

To participate in any Glen Ellyn Park District activity, you must sign a waiver releasing the Park District of any liability.

activity changes or cancellations

The Glen Ellyn Park District reserves the right to cancel, postpone, or combine activities, or to change instructors. If an activity is canceled due to insufficient enrollment, you will be notified at least 7 days in advance. For weather-related cancellations, please visit gepark.org/hotline. If the District cancels a class, we will first try to offer a make-up session. If a make-up session isn't possible, you will receive a credit to your account or a full refund.

accommodation for persons with disabilities

Persons with disabilities are encouraged to contact the Park District at (630) 942-7280 about special accommodations needed for the enjoyment of Park District activities.

fee assistance and scholarship program

The Glen Ellyn Park District recognizes there are community residents who may suffer economic setbacks that might preclude their participation in Glen Ellyn Park District activities. The scholarship, or financial aid, program is available to all Glen Ellyn Park District residents that qualify.

Scholarship funds can be used for non-contractual camps and activities, pool passes, trips, preschool, fitness, athletics, etc., where fees are required. Funds are not eligible for equipment purchases or rental fees. Residents who qualify are eligible to receive up to \$400 maximum per person per calendar year (January 1-December 31) based on need and availability of funds.

Applicants must be able to provide proof of residency within Glen Ellyn Park District boundaries and income as defined on the application. Copies of the application are available at gepark.org/financial-aid or by visiting the Spring Avenue (185 Spring Avenue) or Main Street (501 Hill Avenue) Recreation Centers. A completed application form along with copies of supporting documents must be returned in person or mailed to: Scholarship Program, Glen Ellyn Park District, 185 Spring Avenue, Glen Ellyn, IL 60137. Please allow up to 3 weeks for the application process. Applicants will be notified by letter or phone of the decision made concerning the scholarship. If you have questions, email scholarships@gepark.org.

glen ellyn park district and the ADA

The Americans with Disabilities Act (ADA) took effect in January 1990 and the Glen Ellyn Park District complies with the legislation's purpose which prohibits discrimination on the basis of a disability. The Glen Ellyn Park District will make reasonable accommodations in recreation activities to enable participation by an individual with a disability that meets essential eligibility requirements for that leisure activity and facility. If you have questions about the Glen Ellyn District's commitment regarding the ADA policy or you believe you have been unfairly discriminated against by the Park District, please contact Stacey Lim at slim@gepark.org or (630) 942-7275. Those who use the Telecommunications Device for the deaf may reach the Park District by calling the Illinois Relay Line at (800) 526-0844.

behavior policy

All individuals participating or volunteering in a Park District activity or activities, attending a class or event, or using District facilities or property are expected to exhibit appropriate behavior at all times and adhere to the Glen Ellyn Park District Behavior Code of Conduct. A copy of the Behavior Code of Conduct can be found at gepark.org. The failure to follow the Behavior Code of Conduct, or activity or facility rules, may result in removal of the participant or guest from the activity, event, park or facility.

- I will require that my child's coach be trained in the responsibilities of being a youth sports coach.
- I will remember that the game is for youth – not adults.
- I will do my very best to make youth sports fun for my child.
- I will ask my child to treat other players, coaches, and officials with respect regardless of race, gender, creed, or ability.
- I agree with these rules and understand that the Glen Ellyn Park District Associations have adopted a Zero-Tolerance Policy and that not abiding by these rules may restrict me from attending future games and practices.

pets at events

The Glen Ellyn Park District asks that everyone please exercise good judgment and leave pets at home when attending events that draw large crowds. Please show respect for other people, yourself and your pet by helping the Park District maintain a safe and healthy environment where all people have the opportunity to participate and enjoy themselves.

non-discrimination statement

The Glen Ellyn Park District does not discriminate on the basis of race, color, religion, gender, sexual orientation, age, national origin, marital status, veteran status, disability or any other legally protected characteristic either through its employment practices, the operation of its activities and services, or through its relationship with vendors and other business providers.

insurance

The Glen Ellyn Park District does not provide medical insurance coverage for individuals who participate in our activities or use our facilities. To do so would make activities and user fees cost prohibitive.

adult's code of ethics

- I will encourage good sportsmanship by demonstrating positive support for players, coaches, and officials at every game and practice.
- I will place the emotional and physical well-being of my child ahead of my personal desire to win.
- I will insist that my child play in a safe and healthy environment.

notice of possible changes in the playbook listings

The policies, procedures, requirements, activities, fees and facility availability contained in this brochure, represent Park District activities and policies at the time of publication. At times, changes in activities and policies are necessary or desirable after the publication of this guide, but prior to the commencement of activities or facility operations. In order to provide the best services, activities and facilities to our customers, the Glen Ellyn Park District reserves the right to add, change, modify or delete any activity information or policies after they have been published. We will attempt to make a reasonable effort to provide prompt notice of any changes in the information provided, but the extent of the notification or its timeliness can not be guaranteed. We apologize for any inconvenience; your understanding and cooperation are appreciated.

photo and video policy

Photos and video footage are periodically taken of people participating in a Park District program or activity, attending a class or event, or using District facilities or property. Please be aware that by registering for an activity or class, participating in an activity, attending an event, or using District facilities or property, you authorize the District to use these photos and video footage for promotional purposes in District publications, advertising, marketing materials, brochures, event flyers, social media (including Facebook, YouTube, Instagram, X (formerly Twitter), and other social media sites operated by the District), and the District's website without additional prior notice or permission and without any compensation to you. All photos and videos are property of the District. If you do not want a picture taken, please tell our photographer.

refund policy and service fees:

Refunds for the Glen Ellyn Park District are only provided under certain circumstances.

If the District cancels an activity:

If the District cancels a class, we'll first try to offer a make-up session. If a make-up session isn't possible, you will receive a credit to your account or a full refund.

When you withdraw from an activity:

If you withdraw from an activity before the refund request deadline, any monetary refund will incur a service fee of at least \$10, unless a specific commitment or cancellation fee already applies. If the activity costs less than \$10, you will not owe any additional amount. In this case, the service fee will match the cost of the activity. You can avoid this service fee by transferring to another activity or by having the full refund amount applied as a credit to your household account for future use.

No refunds or prorated fees will be issued for non-attendance, scheduling conflicts, or for withdrawals after the refund request deadline. It is also important to note that no refunds will be issued once a program, session, or activity has ended.

For specific refund deadlines and policies for each activity, please refer to the table on the next page.

submitting a refund request:

We are committed to providing high-quality recreation activities, events, and programs. If you're not satisfied, we welcome your feedback, suggestions, and ideas for improvement.

To request a refund, please:

- Call us at (630) 942-7280
- Email registration@gepark.org
- Complete the Refund Request Form at gepark.org/refunds

Form of refund:

All refunds will be processed using the original payment method from registration or issued as a credit to your account. Refund requests are typically processed within 10-15 business days.

refunds are not provided for the following:

The following are not eligible for refunds, credits or any form of remissible payment.

- Food, meals, or catering included as a part of a program, party, event, or rental.
- Concession sales
- Daily facility admissions and drop-in fees
- Pool passes
- Day trips or tickets to entertainment
- Registered and drop-in special events
- Program supplies and materials
- Garden plots
- Gift certificates
- Fitness memberships
- Platform tennis memberships
- Clay tennis court memberships
- Dog park memberships
- Walking track memberships
- Punch cards and 5-visit passes

medical refunds:

A prorated refund may be issued if the participant withdraws for medical reasons. Medical refunds require a signed doctor's note explaining the injury or illness and must be submitted within 10 business days of when the participant first misses the program due to the injury or illness. Medical refunds will be subject to applicable cancellation fees and cannot be processed after the program has ended.

parties and rentals:

All rental facilities have unique refund policies. All refunds for parties and facility rentals are subject to the specific refund policy outlined in the rental agreement for the respective facility. Please refer to your rental agreement for specific cancellation fees and/or refund eligibility.

refund request deadlines and policies:

ACTIVITY	DEADLINE/REFUND POLICY
General Activities, Registered Events, and Summer Camps	Refunds available up to one week prior to the activity start date.
Preschool Education Program, Kindergarten Enrichment, and Adventure Time Before and After School Care	<ul style="list-style-type: none"> The \$150 commitment fee is non-refundable. All cancellations for the school year must be made before August 1. Cancellations made after this date will forfeit the \$150 commitment fee, and any refund will be prorated based on days attended. For Preschool and Adventure Time, no refunds will be issued after January 1, unless warranted due to medical reasons or family relocation.
Chameleon Theatre Productions	No refunds after the second rehearsal.
Recital Dance	<ul style="list-style-type: none"> Refunds available up to one week prior to the activity start date. Costume fees are non-refundable.
Youth House Baseball Youth House Soccer Girls House Softball Winter Youth Basketball	Refunds available up to two weeks prior to the first game.
Rebels Travel Baseball (Full-Time and Part-Time) Phillies Travel Softball (Full-Time and Part-Time)	<ul style="list-style-type: none"> The \$350 commitment fee is non-refundable. Before January 1: Full refund minus the \$350 commitment fee. After January 1: A prorated refund, minus the \$350 fee, will be issued only for medical reasons (with a doctor's note) or family relocation; otherwise, no refund will be given.
Golden Eagles Tackle Football	<ul style="list-style-type: none"> May 1-July 31: Full refund minus a \$100 cancellation fee. After August 1: No refunds.
Golden Eagles Flag Football	<ul style="list-style-type: none"> May 1-August 31: Full refund minus a \$35 cancellation fee. After September 1: No refunds.
Golden Eagles Sideline Cheerleading Golden Eagles Competitive Cheerleading	<ul style="list-style-type: none"> No refunds after May 1. Uniform fees are non-refundable.
Bulldogs Lacrosse	<ul style="list-style-type: none"> February 1-March 31: Full refund minus a \$75 cancellation fee. After March 31: No refunds. Uniform fees are non-refundable.
Lakers FC Travel Soccer Midwest FC Travel Soccer	<ul style="list-style-type: none"> The \$300 commitment fee is non-refundable. Before August 1: Full refund minus the \$300 commitment fee. After August 1: No refunds.
Cyclones Volleyball Girls Lacrosse RISE Field Hockey	Refunds available up to one week prior to the activity start date.
Gators Swim Team and Inclusive Gators Grasshoppers Tumbling Team	Refunds available up to two weeks prior to the first meet.
Private Lessons and Personal/Sports Training	Refunds are available for unused sessions within 365 days of purchase.